

Setup for BigPond Cable with BPA Login

This guide has been provided to help BigPond cable users connect to the BigPond network and simulate the Heartbeat through your network.

Please find that we will need the following before we can continue:

- BPA Login software from SourceForge, can be found here: <http://bpalogin.sourceforge.net/>
- This Guide

Now that we have the necessities we can continue with the setup. Please connect the cable modem to the WAN port on the router and a network cable to your PC.

It should be as below:

CABLE MODEM → WAN-ROUTER-LAN → COMPUTER'S NETWORK CARD

Once connected as shown above, we will need to setup a Static IP address on your PC. Do the following to set this up:

- **Windows 98/ME:**

Start > Settings > Control Panel > Network > TCP/IP (Network Card) > Properties

From here we will need to setup your IP addressing, please enter it as below:

IP: 192.168.0.2
SUBNET MASK: 255.255.255.0
GATEWAY: 192.168.0.1
DNS: 192.168.0.1

Now apply these settings, reboot your PC and continue below:

- **Windows 2000/XP:**

Start > Control Panel > Network Connections > Local Area Connection > Properties > TCP/IP

From here we will need to setup your IP addressing, please enter it as below:

IP: 192.168.0.2
SUBNET MASK: 255.255.255.0
GATEWAY: 192.168.0.1
DNS: 192.168.0.1

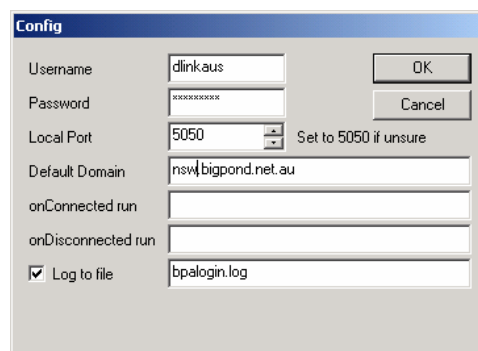
Now apply these settings and continue below:

Now that we have an IP address set on our PC we can setup a connection to Bigpond with BPA Login. Please make sure to follow the next few steps carefully.

1. Uninstall or disable your Bigpond login software because you will be using BPALogin instead.
2. Install BPA Login as a Standard Program – this is essential in order to connect to the Internet.
3. Start BPA Login.
4. Enter the configuration as shown below:

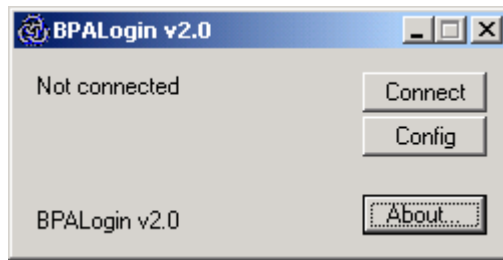
(make sure that you enter the correct state into the domain field, e.g. nsw, qld, wa, vic, etc...)

Username: Your BigPond username
Password: Your BigPond password
Local Port: 5050
Default Domain: nsw.bigpond.net.au



5. Now click OK to save your configuration.

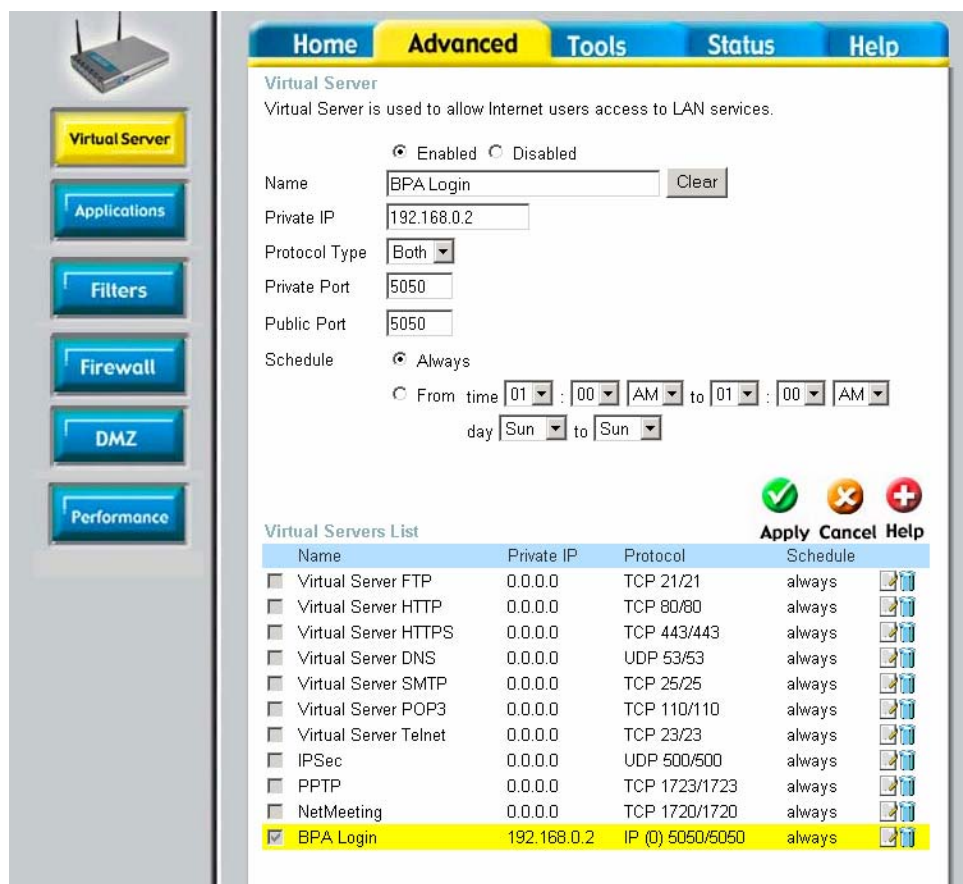
6. You will now return to this screen, just minimise this for now.



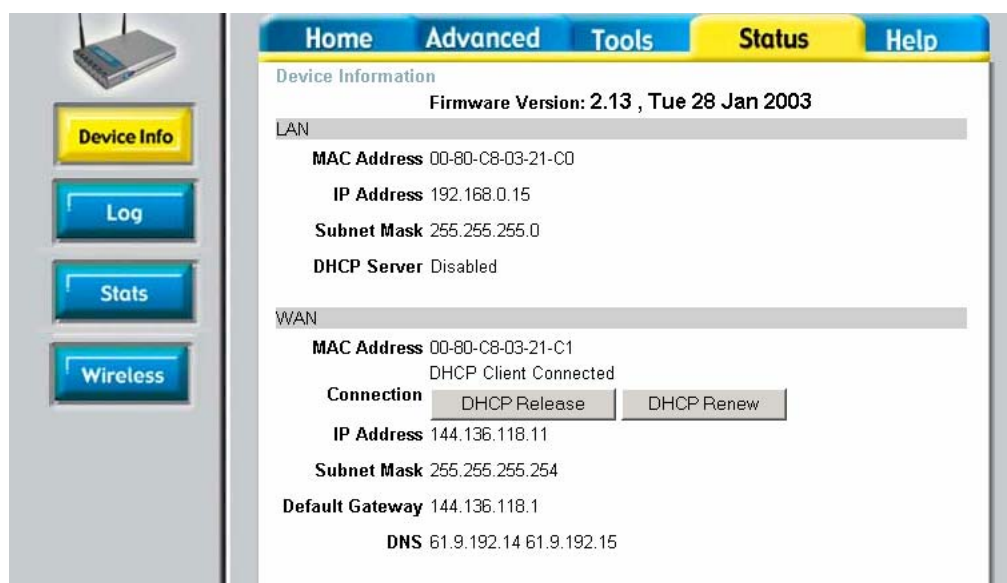
7. Now that the BPA Login software is setup we will need to setup the router to forward the Telstra Heartbeat to the PC we have just configured.
8. You will now need to login to the router using the password and username that has been specified, or the defaults if left untouched. Start your Internet browser (ensure that any proxy settings are disabled. In Internet Explorer: look under Tools > Internet Options > Connection > LAN Settings). Then type the IP address of the router (the default IP address is 192.168.0.1) into the Location (for Netscape) or Address (for IE) field and press "Enter". For example: http://192.168.0.1. After the connection is established, you will see the web interface of the router. To log in, enter the Username as "admin" and leave Password field blank (factory settings).
9. Now go to Home > WAN, in this page setup as below:

10. One thing of recent that is vital is the cloning of your PCs MAC address. This is what Telstra will assign an IP to. If you have the wrong MAC address you will be unable to connect. This MAC address must be from the PC that was originally setup and working with the cable modem.
11. The next step is to setup the port redirections for the Telstra Heartbeat, this will be going to the PC we have just setup up. Please see an example configuration below:

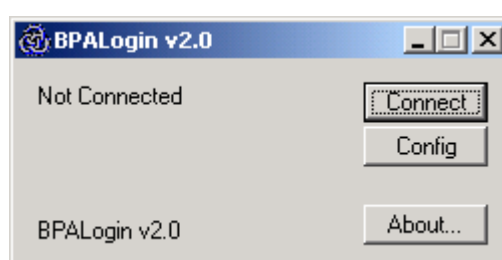
Name:	BPA Login
Private IP:	192.168.0.2
Protocol Type:	Both
Private Port:	5050
Public Port:	5050
Schedule:	Always



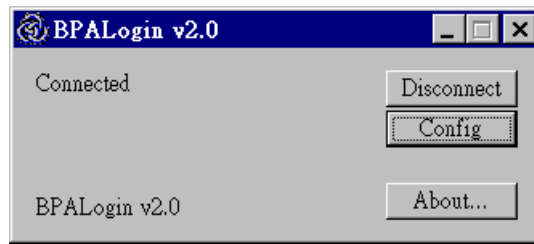
12. Now that all of the redirections are done we can now get an IP address of Telstra. This is done by going to the Status page and then clicking on DHCP Renew. You should get something similar to what is below:



13. Now that the router setup is complete we now need to connect to Telstra via BPA Login. This is done by opening up the BPA Login program that we minimised earlier and clicking on the "Connect" button.



14. This should now say "Connected" and display the blue icon in the system tray without the red exclamation mark through it. This will indicate that you are connected.



15. You should now be able to open your Internet browser and open a favourite or go to a web address.

Happy browsing.

Regards,
Technical Support
D-Link Australia