

Package Contents:

- One D-Link DCS-1000 Internet Camera
- One Installation CD-ROM
- One AC power adapter
- One Camera Stand
- One Category 5 Ethernet Cable

Note: If any of the contents are missing, please contact your reseller.

System Requirements

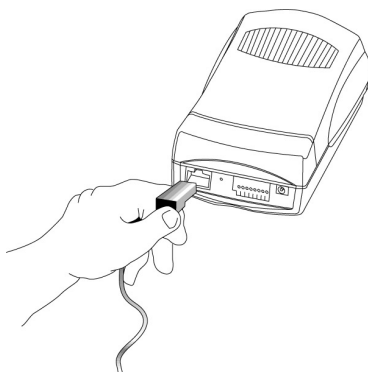
- Java Enabled and Compliant Web Browser
- CPU: Pentium II, 266 MHz or above
- Memory Size: 32 MB (64 MB recommended)
- VGA card resolution: 800x600 or above

1

Hardware Installation

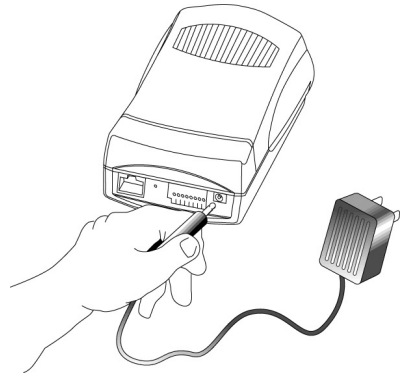
- **Connect an Ethernet Cable**
Connect an Ethernet cable to the network cable connector located on DCS-1000's rear panel and attach it to the network.

We suggest using the Ethernet port to configure the DCS-1000 and then install the camera in its correct location. Doing so will allow easy installation and proper configuration.



- **Attach the External Power Supply**
Attach the external power supply to the DC power input connector located on the DCS-1000's rear panel and is labeled DC 5V and connect it to your local power supply.

Note: Confirm power source is supplied from the LED indicators label "Power" on the DCS-1000.



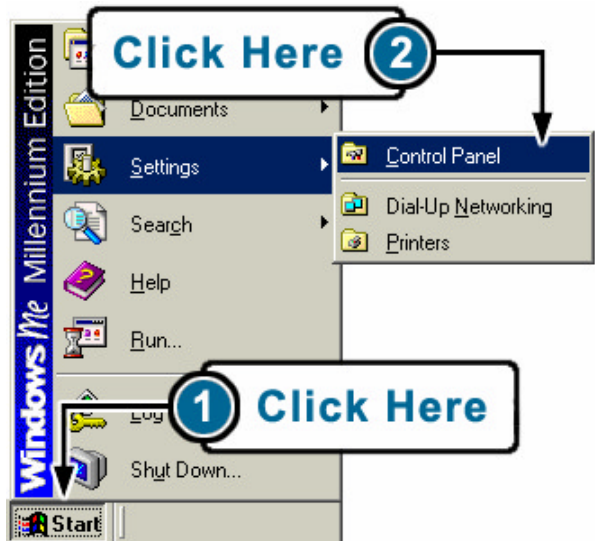
2

Configuring the IP address on your PC

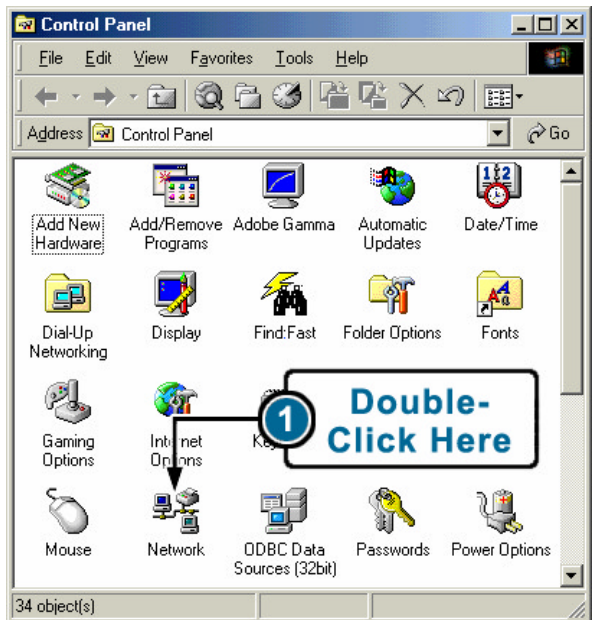
The instructions contained in this section are intended for users of Windows Me, 98 and 95. Please refer to the documentation for your specific operating instructions for details on changing the IP address of your computer so that you can access and configure the DCS-1000.

If your computer already uses an IP address of 192.168.0.x, please skip to the next section.

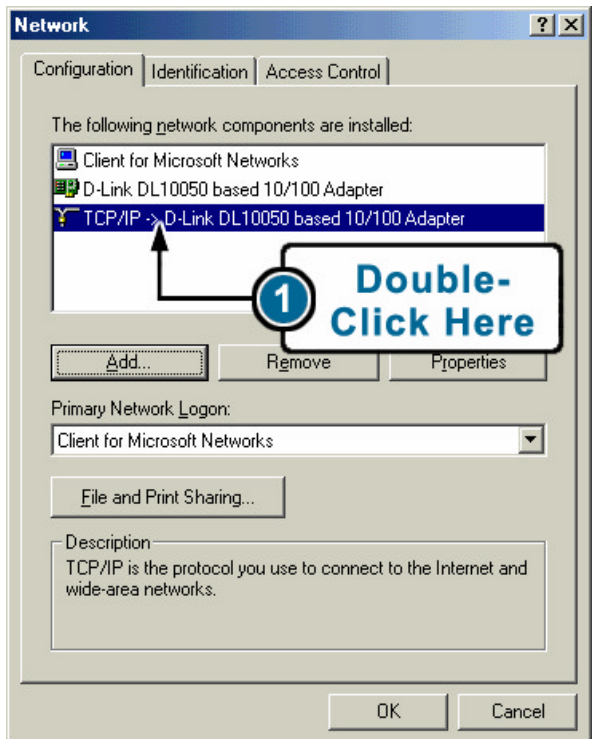
- With your computer on, **open the Control Panel** by clicking the **Start** button, select **Settings**, and click on **Control Panel**



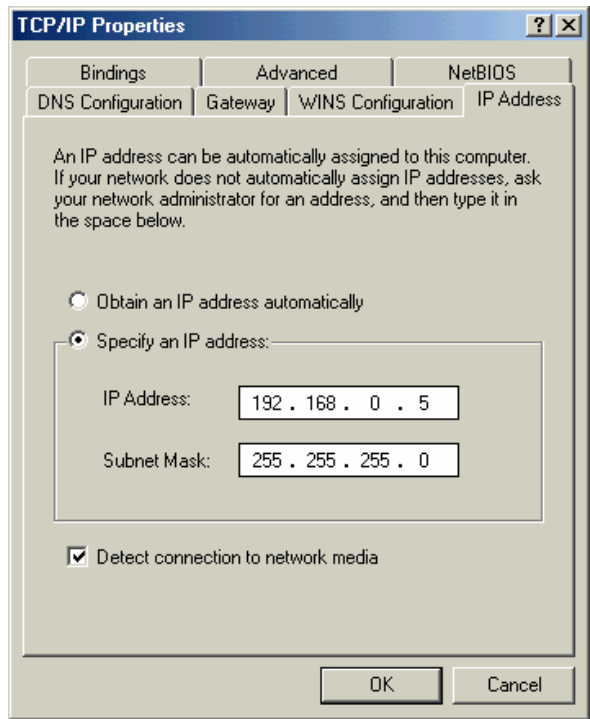
- Find and Double Click the **Network** Icon



- Under the configuration tab, find and double click **TCP/IP** for the network adapter used to configure the DCS-1000.
- Please make note of the IP Address settings so that you can change these settings back after the configuration of the DCS-1000 is complete.



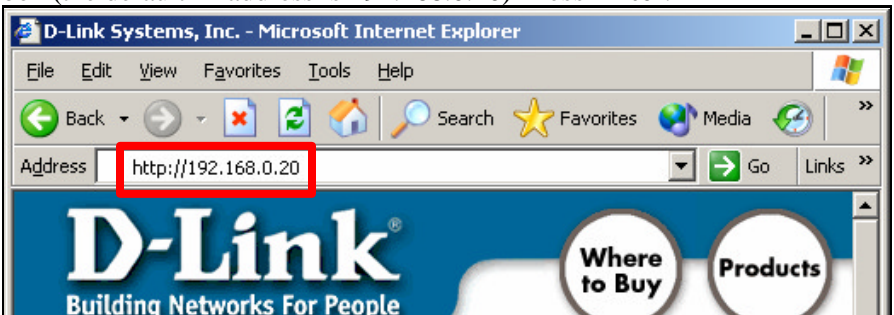
- Select **Specify an IP address** and type “192.168.0.x” (the number “x” can be replaced with any number that will not conflict with other devices on your network). If your network does not already use the 192.168.0.x IP address scheme, then using the number “5” as shown below will work.
- Click the “**OK**” button. Windows may copy files needed to complete your settings.
- When asked, restart the PC. If you are not asked, restart your PC manually.



3

Configuring the DCS-1000

- Using your favorite web browser, type “http://192.168.0.20” in the address box (the default IP address is 192.168.0.20) Press **Enter**.



- The Welcome screen of the DCS-1000 will appear. Click “**System Administration**” to access and change system settings.
- In the “**Computer Name**” field, type a name of your choosing that relates to the camera or its location.

- In the “**Location**” field, type a description of your choosing.
- In the “**Admin**” field, type a username that will be used as the Administrator account. We highly recommend that you change this setting now to enable the highest security for the camera.
- Type a unique Admin Password into the “Admin Password” and “Confirm Password” fields.
- In the Manually Assign section, input the correct settings for this camera into the “**IP Address**”, “**Subnet Mask**” and “**Default Gateway**” fields. If you are not sure what these settings should be, please contact your network administrator to determine the correct settings.
- The **Default Gateway** is the IP address of your Router. This settings allows the DCS-1000 to be seen from the public Internet.
- Next, type in the “**DNS IP Address**” of your Domain Name System servers into the cooresponding fields. These settings will be detirmined by your ISP.
- In the **LED Control Settings** section, choosing one of the following:
 - Normal: Lights operate normally.
 - OFF: Lights will stay off.
 - Dummy: Lights will operate randomly.
- Refer to the Manual for instructions on how to use the “**Loading Active X From**” setting.
- The **Open Second Port** section is required to be used when installing a DCS-1000 on a network with a public web server. Please refer to the Manual for detailed information regarding this feature.
- Press the **Save** button to save the settings.
- The camera is now configured to work on your network. If you were required to change the IP address of a computer on your network to make these changes to the camera, you may now change the settings back to their original settings.
- For instructions and details related to other settings related to System Administration settings, please refer to the Manual.

4

Accessing the Streaming Video

- Using your favorite web browser, type “http://**address**” in the address box where **address** is the IP address that you assigned to the camera from the previous section. Press **Enter**.



- The Welcome screen of the DCS-1000 will appear. Click on “**View Image – Java Mode**” from the Home screen to access the streaming video.
- Next, you will want to adjust the focus of the lens. To do this, turn the lens slowly in either clockwise or anti-clockwise direction until the desired image appears. **DO NOT** over-turn the lens in either of the directions as it will be out of focus. Unless you want to substitute the lens **DO NOT** unscrew more than 1.0mm apart from the Fixed Lens Assembly.
- To help you get the best image quality, keep in mind that while adjusting the DCS-1000's focus you can preview the image quality from your Web browser.



Tips and Technical Support

Tips

- If you are installing several cameras, it may be easier to use one computer to configure all of them before you install them into the planned location.
- Make sure that you have the latest version of Java installed on your computer to ensure proper operating when viewing the video in Java mode. Java can be downloaded for free from Sun's website (<http://www.sun.com/download/>).
- Refer to the manual located on the CD-ROM for additional information regarding all features and instructions related to the DCS-1000.
- If problems arise when installing the camera or viewing the video, please refer to the Appendix section of the Manual for troubleshooting tips. If the Manual does not answer your questions, please refer to the D-Link technical support web page described in the next section.

Technical Support

D-Link provides free technical support for customers within the United States during the warranty period. U.S. customers can contact D-Link Technical Support through our web site, e-mail or by phone.

D-Link Technical Support over Telephone:

1-800-758-5489

24 Hours a Day, 7 Days a Week

D-Link Technical Support over the Internet:

support.dlink.com

support@dlink.com

If you are a customer residing outside of the United States, please refer to the list of D-Link locations that is included in the User's Manual.

[illegible]

<http://www.dlink.com>