

- Setup Wizard
- D-ViewCam
- ffdshow
- View Documentation
- Network Magic
- Support
- Registration



Exit

DCS-3410 | Business Class Networking

InstallShield Wizard



D-Link Setup Wizard SE Setup is preparing the InstallShield® Wizard, which will guide you through the rest of the setup process. Please wait.



Cancel

InstallShield Wizard



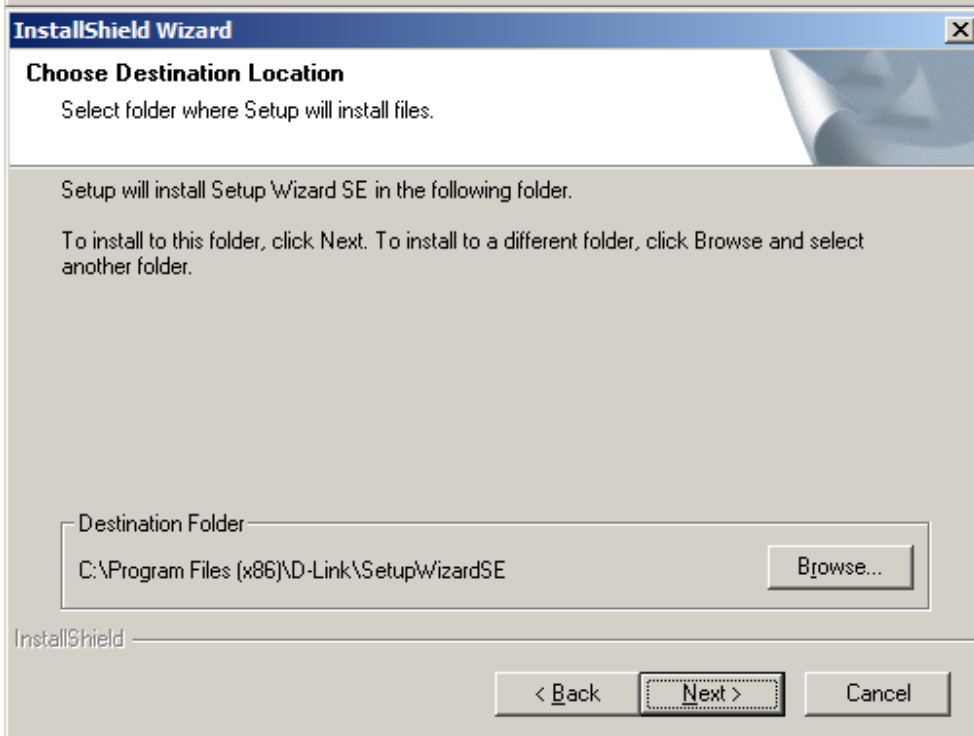
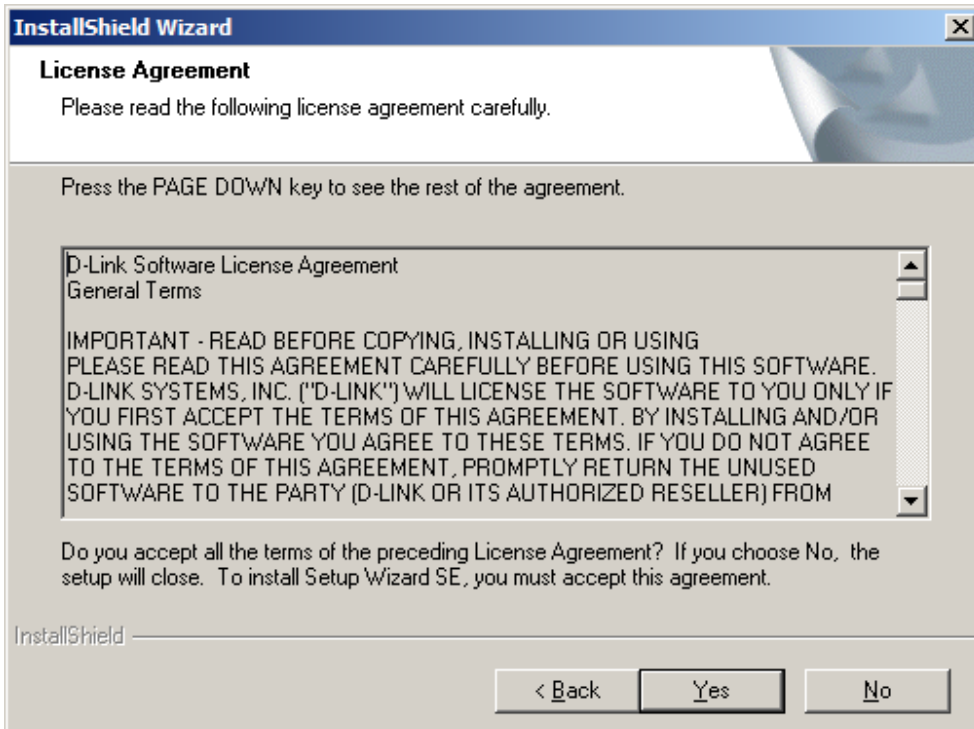
Welcome to the InstallShield Wizard for Setup Wizard SE

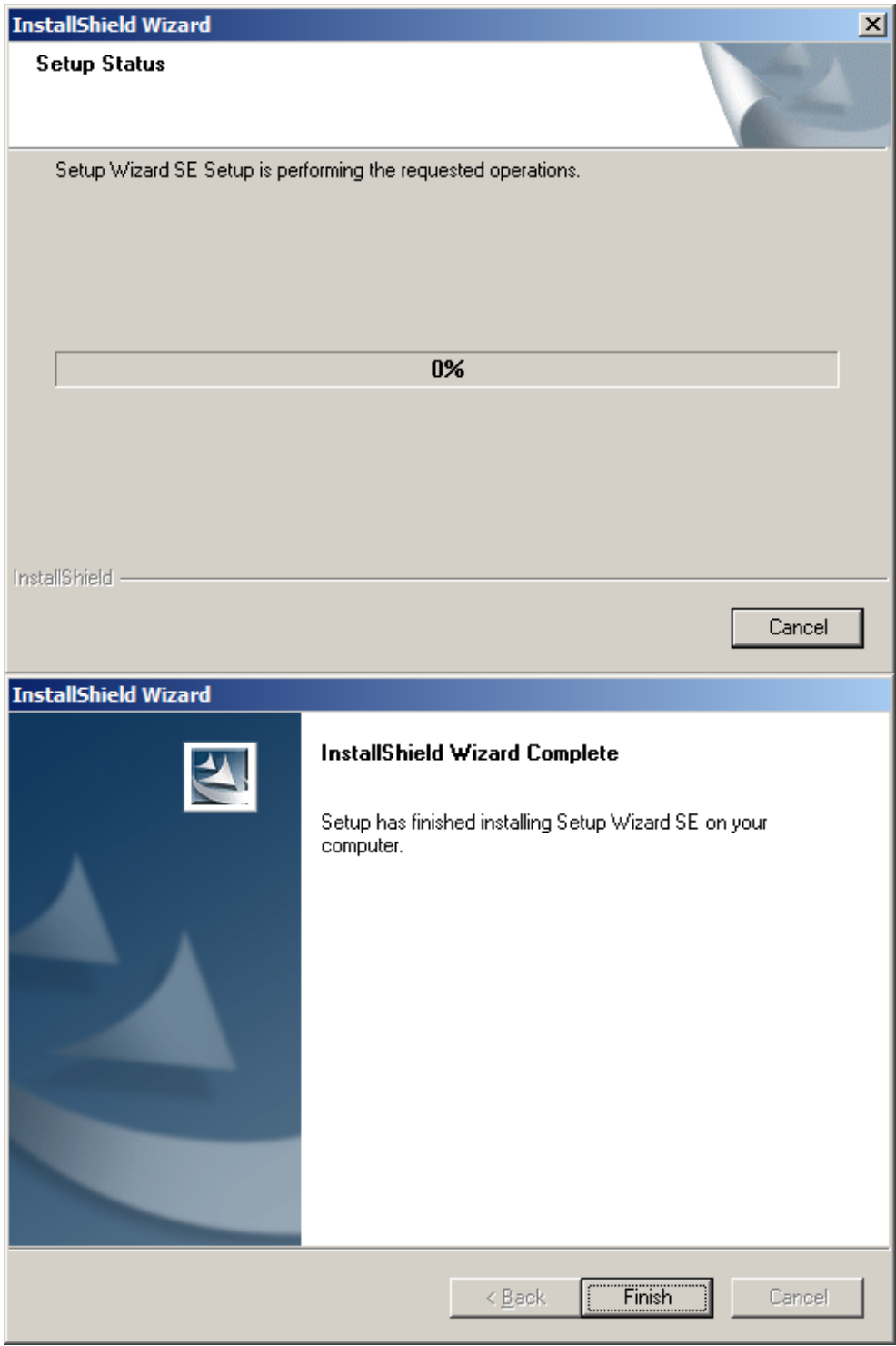
The InstallShield® Wizard will install Setup Wizard SE on your computer. To continue, click Next.

< Back

Next >

Cancel





- Setup Wizard
- D-ViewCam
- ffdshow
- View Documentation
- Network Magic
- Support
- Registration



◀ Exit

DCS-3410 | Business Class Networking

Choose Setup Language [X]

Select the language for this installation from the choices below.

English (United States) [v]

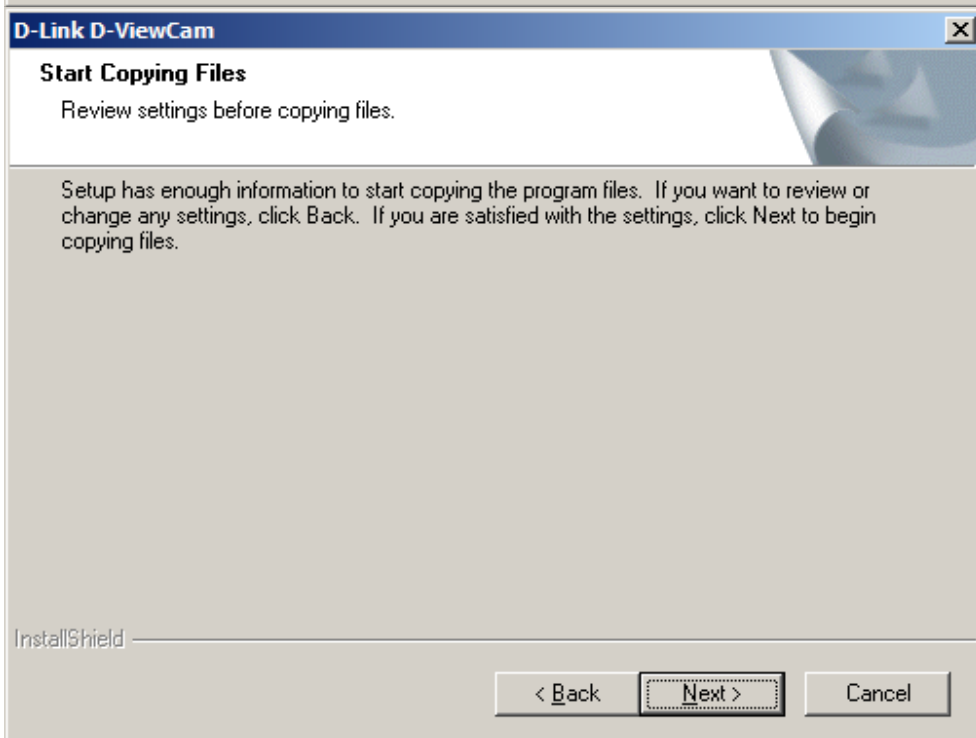
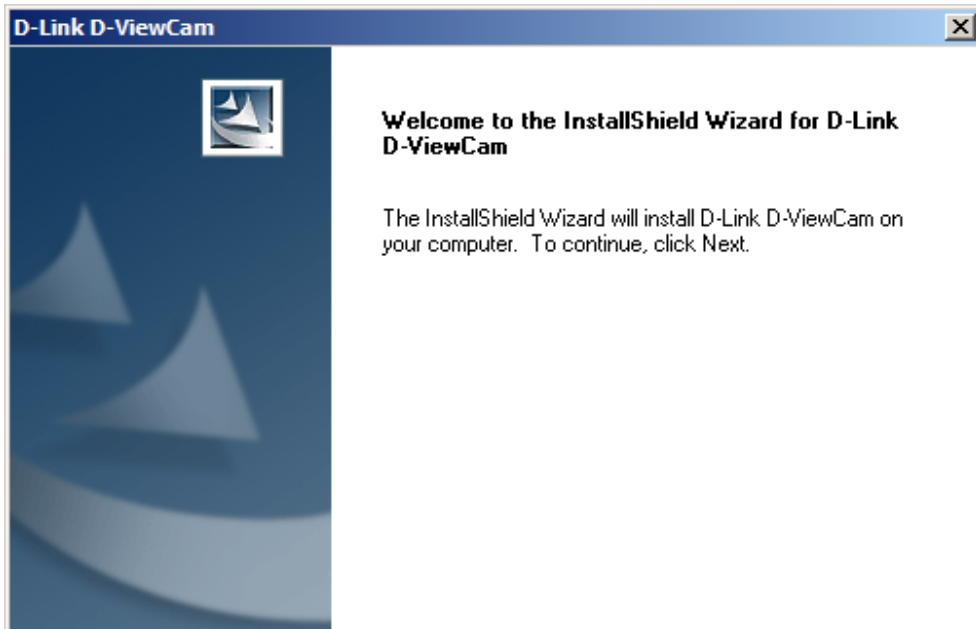
OK Cancel

InstallShield Wizard

D-Link D-ViewCam Setup is preparing the InstallShield Wizard, which will guide you through the program setup process. Please wait.

Checking Operating System Version

Cancel



Copying new files



Cancel

D-Link D-ViewCam



InstallShield Wizard Complete

Setup has finished installing D-Link D-ViewCam on your computer.

< Back

Finish

Cancel

- Wizard
- Search
- Link
- About
- Exit

MAC Address	Current IP Address	Device Name
00.1e.58.9f.31.da	192.168.0.20	DCS-3410

Set up an Admin ID and Password to secure your camera.
Click Next to continue.

Admin ID Password

Change

New ID	<input type="text"/>	New Password	<input type="text"/>
Reconfirm	<input type="text"/>	Reconfirm	<input type="text"/>

-  Back
-  Next
-  Exit

Set IP Address

DHCP

Static IP

IP Address

Subnet Mask

Default Gateway

Primary DNS

Secondary DNS



Admin ID

Password

IP Address

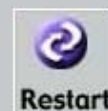
Subnet Mask

Default Gateway

Primary DNS

Secondary DNS

The Setup Wizard has completed. Click on 'Back' to modify your settings. Click 'Restart' to save your current settings and reboot the Internet Camera.



Connect to 192.168.10.234 [?] [X]



The server 192.168.10.234 at DCS-3410 requires a username and password.

Warning: This server is requesting that your username and password be sent in an insecure manner (basic authentication without a secure connection).

User name:

Password:

Remember my password

OK Cancel

D-LINK CORPORATION | INTERNET CAMERA | LIVE VIDEO - Windows Internet Explorer

http://192.168.10.234/eng/index.cgi

Product: DCS-3410 Firmware Version: 1.00

D-Link

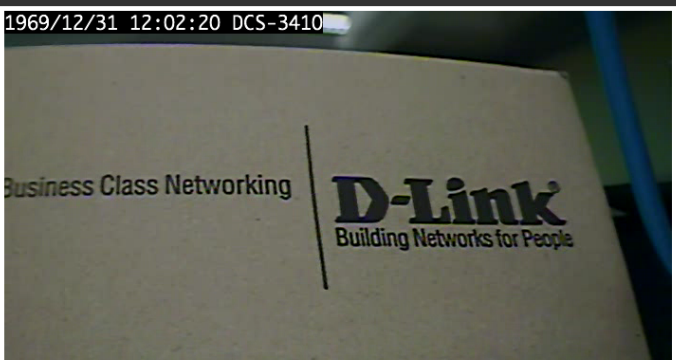
DCS-3410 // LIVE VIDEO SETUP MAINTENANCE STATUS HELP

LIVE VIDEO

This section shows your camera's live video. You can control your settings using the buttons below. Current resolution is 704 x 576.

LIVE VIDEO

1969/12/31 12:02:20 DCS-3410



Business Class Networking | **D-Link** Building Networks for People

Internet | Protected Mode: Off 100%

D-LINK CORPORATION | INTERNET CAMERA | SETUP - Windows Internet Explorer
http://192.168.10.234/eng/admin/adv_wizard.cgi

Product: DCS-3410 Firmware Version: 1.00

D-Link

DCS-3410	LIVE VIDEO	SETUP	MAINTENANCE	STATUS	HELP
-----------------	-------------------	--------------	--------------------	---------------	-------------

Setup Wizard
Network Setup
Dynamic DNS
Image Setup
Audio and Video
Motion Detection
Time and Date
Recording
Snapshot
Digital Output
RS-485
Logout

INTERNET CONNECTION SETTINGS

In this section, you can setup the IP camera's wired network interface settings. If you are configuring this device for the first time, D-Link recommends that you click the Setup Wizard button, and follow the instructions on screen. If you wish to modify or configure the IP camera settings manually, click manual setup to enable the IP Camera connection setup.

IP CAMERA MOTION DETECTION SETTINGS

In this section, you can setup the IP camera's Motion Detection settings. If you are configuring this device for the first time, D-Link recommends that you click the Setup Wizard button, and follow the instructions on screen. If you wish to modify or configure the Motion Detection setup manually, click manual setup to enable the Motion Detection setup.

Helpful Hints...
If you are an advanced user and have configured an Internet camera before, click 'Manual Internet Connection Setup' to input all settings manually.
If you consider yourself an advanced user and you want to manually set up motion detection settings, click 'Manual Motion Detection Setup' to input all the settings manually.

SECURITY

Copyright © 2007-2008 D-Link Corporation

D-LINK CORPORATION | INTERNET CAMERA | SETUP - Windows Internet Explorer
http://192.168.10.234/eng/admin/netWizard.cgi

Product: DCS-3410 Firmware Version: 1.00

D-Link

WELCOME TO D-LINK SETUP WIZARD - INTERNET CONNECTION SETUP

This wizard will guide you through a step-by-step process to configure your new D-Link Camera and connect the camera to the internet. To set-up your camera motion detection settings, please click Back button to close this wizard and re-open the motion detection setup wizard.

- Step 1: Setup LAN Settings
- Step 2: Setup Internet Settings
- Step 3: Setup DDNS Settings
- Step 4: Camera Name Settings
- Step 5: Setup Time Zone

SECURITY

Done

D-LINK CORPORATION | INTERNET CAMERA | SETUP - Windows Internet Explorer
http://192.168.10.234/eng/admin/netWizard.cgi

Product: DCS-3410 Firmware Version: 1.00

D-Link

STEP 1: SETUP LAN SETTINGS

Please select whether your camera will connect to the Internet with a DHCP connection or Static IP address. If your camera is connected to a router, or you are unsure which settings to pick, D-Link recommends that you keep the default selection of DHCP connection. Otherwise, click on Static IP address to manually assign and IP address before clicking on the Next button.

DHCP Connection
 Static IP Address

IP Address	<input type="text" value="192.168.10.234"/>
Subnet Mask	<input type="text" value="255.255.255.0"/>
Default Gateway	<input type="text" value="192.168.10.254"/>
Primary DNS	<input type="text" value="192.168.0.249"/>
Secondary DNS	<input type="text" value="192.168.0.243"/>

Done

D-LINK CORPORATION | INTERNET CAMERA | SETUP - Windows Internet Explorer
http://192.168.10.234/eng/admin/netWizard.cgi

Product: DCS-3410 Firmware Version: 1.00

D-Link

STEP 2: SETUP INTERNET SETTINGS

Please enter your ISP Username and Password in the case that your ISP is using PPPoE and then click on the Next button. Please contact your ISP if you do not know your Username and Password.

Enabled

User Name
(e.g. 123456@hinet.net)

Password

Done

D-LINK CORPORATION | INTERNET CAMERA | SETUP - Windows Internet Explorer
http://192.168.10.234/eng/admin/netWizard.cgi

Product: DCS-3410 Firmware Version: 1.00

D-Link

STEP 3: SETUP DDNS SETTINGS

If you have a Dynamic DNS account and would like the camera to update your IP address automatically, enable DDNS and enter in your host information below. Please click on the Next button to continue.

Enable

Server Address: << Select Dynamic DNS Server

Host Name:

User Name:

Password:

Verify Password:

Timeout: (Hours)

Done

D-LINK CORPORATION | INTERNET CAMERA | SETUP - Windows Internet Explorer
http://192.168.10.234/eng/admin/netWizard.cgi

Product: DCS-3410 Firmware Version: 1.00

D-Link

STEP 4: CAMERA NAME SETTINGS

D-Link recommends that you rename your camera for easy accessibility. You can then identify and connect to your camera via this name. Please assign a name of your choice before clicking on the Next button.

Camera Name:

Done

D-LINK CORPORATION | INTERNET CAMERA | SETUP - Windows Internet Explorer
http://192.168.10.234/eng/admin/netWizard.cgi

Product: DCS-3410 Firmware Version: 1.00

D-Link

STEP 5: SETUP TIME ZONE

Please configure the correct time to ensure that all events are triggered, captured and scheduled at the correct time and day and then click on the Next button.

Time Zone: [(GMT+10:00) Canberra, Melbourne, Sydney]

Enable Daylight Saving:

Back Next Cancel

Done

D-LINK CORPORATION | INTERNET CAMERA | SETUP - Windows Internet Explorer
http://192.168.10.234/eng/admin/netWizard.cgi

Product: DCS-3410 Firmware Version: 1.00

D-Link

STEP 6: SETUP COMPLETE

Below is a summary of your camera settings. Click on the Back button to review or modify settings or click on the Apply button if all settings are correct. It is recommended to note down these settings in order to access your camera on the network or via your web browser.

IP Address	192.168.10.234
IP Camera Name	DCS-3410
Time Zone	(GMT+10:00) Canberra, Melbourne, Sydney
DDNS	Enable
PPPoE	Disable

Back Apply Cancel

Done

Internet | Protected Mode: Off 100%

D-LINK CORPORATION | INTERNET CAMERA | SETUP - Windows Internet Explorer

http://192.168.10.234/eng/admin/netWizard.cgi

Product: DCS-3410 Firmware Version: 1.00

D-Link

STEP 6: SETUP COMPLETE

Below is a summary of your camera settings. Click on the Back button to review or modify settings or click on the Apply button if all settings are correct. It is recommended to note down these settings in order to access your camera on the network or via your web browser.

Changes saved.
IP Camera's network is restarting, please wait for 19 seconds ...

Done

D-LINK CORPORATION | INTERNET CAMERA | SETUP - Windows Internet Explorer

http://192.168.10.234/eng/admin/adv_lan.cgi

DCS-3410

- Setup Wizard
- Network Setup
- Dynamic DNS
- Image Setup
- Audio and Video
- Motion Detection
- Time and Date
- Recording
- Snapshot
- Digital Output
- RS-485
- Logout

NETWORK SETUP

You can configure your LAN and Internet settings here.

LAN SETTINGS

LAN

DHCP Connection
 Static IP Address

IP Address

Subnet Mask

Default Gateway

Primary DNS

Secondary DNS

Enable UPnP
 Enable UPnP port forwarding

Enable PPPoE
 User Name
 Password
 Confirm password

PORT DETAIL SETTINGS

HTTP port

RTSP port

Helpful Hints...

Select 'DHCP Connection' if you are running a DHCP server on your network and would like an IP address assigned to your camera automatically.

- Enabling UPnP settings will allow you to configure your camera as an UPnP device in the network.

Port Detail Settings allow you to specify the ports you reserve for both HTTP and RTSP Streaming.

- HTTP Port is the port you allocate in order to connect to the camera via a standard web browser.

- RTSP Port is the port you allocate in order to connect to a camera by using streaming mobile device(s), such as a mobile phone or PDA.

Done

D-LINK CORPORATION | INTERNET CAMERA | SETUP - Windows Internet Explorer
http://192.168.10.234/eng/admin/motWizard.cgi

Product: DCS-3410 Firmware Version: 1.00

D-Link

WELCOME TO D-LINK SETUP WIZARD - MOTION DETECTION

This wizard will guide you through a step-by-step process to configure your camera's motion detection functions. To setup the camera LAN or Internet settings, please click on the Back button to close this wizard and re-open the Camera Setup wizard. Otherwise click on the Next button to begin.

- Step 1: Specify Motion Detection Area Settings
- Step 2: Alerts and Notifications

Back Next Cancel

Done

D-LINK CORPORATION | INTERNET CAMERA | SETUP - Windows Internet Explorer
http://192.168.10.234/eng/admin/motWizard.cgi

Product: DCS-3410 Firmware Version: 1.00

D-Link

STEP 1: SPECIFY MOTION DETECTION AREA SETTINGS

This section will allow you to enable or disable motion detection as well as control the sensitivity of your camera's ability to detect movement.

Enable Video Motion
19/7/02/00 11:15:21 DCS-3410



Sensitivity
90 0~100%

Drawing Mode

Draw motion area
 Erase motion area

Clear

Back Next Cancel

Done

Internet | Protected Mode: Off 100%

D-LINK CORPORATION | INTERNET CAMERA | SETUP - Windows Internet Explorer

http://192.168.10.234/eng/admin/motWizard.cgi

File Edit View Favorites Tools Help

D-LINK CORPORATION | INTERNET CAMERA | SETUP

STEP 2: ALERTS AND NOTIFICATIONS

This final step allows you to specify how you receive notification of camera events. Choose between an email notification or alternatively you can setup an FTP Notification. You will need your email account settings or FTP details. If you are unsure of this information, please contact your ISP. Once you have entered this information, please click on the Next button.

Enable e-mail notification

User Name

Password

SMTP Mail Server

Sender E-mail Address

Recipient E-mail Address

Port

Enable FTP uploading

User Name

Password

Host Name

Path

Filename Prefix

Port

Passive Mode

Done

Internet | Protected Mode: Off 100%

D-LINK CORPORATION | INTERNET CAMERA | SETUP - Windows Internet Explorer

http://192.168.10.234/eng/admin/motWizard.cgi

File Edit View Favorites Tools Help

D-LINK CORPORATION | INTERNET CAMERA | SETUP

STEP 3: SETUP COMPLETE

You have completed your camera setup. Please click the Back button if you want to review or modify your settings or click on the Apply button to save and apply your settings.

Motion Detection: Enable Disable

Alerts and Notification: E-mail and FTP Notification

SECURITY

Copyright © 2007-2008 D-Link Corporation.

Done

Internet | Protected Mode: Off 100%

D-LINK CORPORATION | INTERNET CAMERA | SETUP - Windows Internet Explorer

http://192.168.10.234/eng/admin/adv_ddns.cgi

File Edit View Favorites Tools Help

D-LINK CORPORATION | INTERNET CAMERA | SETUP

D-Link

DCS-3410

- Setup Wizard
- Network Setup
- Dynamic DNS**
- Image Setup
- Audio and Video
- Motion Detection
- Time and Date
- Recording
- Snapshot
- Digital Output
- RS-485
- Logout

LIVE VIDEO
SETUP
MAINTENANCE
STATUS
HELP

DYNAMIC DNS

The Dynamic DNS feature allows you to use a domain name that you have purchased (www.yourdomain.com) to access your camera with a dynamically assigned IP address. Most broadband Internet service providers assign dynamic (changing) IP addresses. By using a DDNS service, you can enter your domain name to connect to your camera no matter what your IP address is.

[Sign up for D-Link's Free DDNS service at www.DLinkDDNS.com.](http://www.DLinkDDNS.com)

DYNAMIC DNS SETTING

Enable DDNS

Server Address << Select Dynamic DNS Server

Host Name

User Name

Password

Verify Password

Timeout (hours)

Status:OK

Helpful Hints..

Dynamic DNS is useful if you have a DSL or Cable service provider that changes your modem IP address periodically. This will allow you to assign a website domain name to your camera instead of connecting through an IP address.

SECURITY

Copyright © 2007-2008 D-Link Corporation.

D-LINK CORPORATION | INTERNET CAMERA | SETUP - Windows Internet Explorer

http://192.168.10.234/eng/admin/adv_image.cgi

File Edit View Favorites Tools Help

D-LINK CORPORATION | INTERNET CAMERA | SETUP

- Dynamic DNS
- Image Setup**
- Audio and Video
- Motion Detection
- Time and Date
- Recording
- Snapshot
- Digital Output
- RS-485
- Logout

Changes to your settings are made immediately.

LIVE VIDEO




IMAGE SETTINGS

BLC	<input type="radio"/> On	<input checked="" type="radio"/> Off	Brightness	<input type="text" value="50"/>
AWB	<input type="radio"/> On	<input checked="" type="radio"/> Off	Contrast	<input type="text" value="50"/>
AGC	<input checked="" type="radio"/> High	<input type="radio"/> Low	Saturation	<input type="text" value="50"/>
AES	<input checked="" type="radio"/> On	<input type="radio"/> Off	Hue	<input type="text" value="50"/>

Hue and Contrast can be adjusted from 0 to 100 allowing you to fine-tune your image settings.

BLC - Back Light Compensation - When an object is in front of bright lights it is difficult for IP camera to capture the image clearly. Selecting this option can allow objects to become clearer when exposed to bright lights.

AWB - Auto White Balance - Is the process of removing unrealistic color casts, so that objects which appear white in person are rendered white in your photo.

AGC - Auto Gain Control - Controls the gain of a signal. Using AGC means that weaker signals receive more gain and stronger signals receive less gain or none at all.

AES - Auto Electronic Shutter - Allows the shutter speed to be adjusted automatically. Faster shutter speed will allow fast moving objects to be seen more clearly.

Brightness - It is used to compensate for badlit scenes.

Saturation - It controls the strength of color from black and white to bold colors.

Internet | Protected Mode: Off | 100%

D-LINK CORPORATION | INTERNET CAMERA | SETUP - Windows Internet Explorer

http://192.168.10.234/eng/admin/adv_audiovideo.cgi

File Edit View Favorites Tools Help

D-LINK CORPORATION | INTERNET CAMERA | SETUP

Select the audio and video settings that best suit your network environment.

Save Settings Don't Save Settings

VIDEO PROFILE 1

Encode Type	Resolution	FPS	bps	JPEG Quality	RTSP URL
MPEG4	704x576	25	2M	Excellent	play1.sdp

VIDEO PROFILE 2

Encode Type	Resolution	FPS	bps	JPEG Quality	RTSP URL
MPEG4	352x288	25	1M	Excellent	play2.sdp

VIDEO PROFILE 3

Encode Type	Resolution	FPS	bps	JPEG Quality	RTSP URL
JPEG	704x576	8	--	Excellent	play3.sdp

VIDEO PROFILE 4 FOR MOBILE DEVICE ONLY

Encode Type	Resolution	FPS	bps	JPEG Quality	RTSP URL
MPEG4	176x144	5	20K	--	3gpp

AUDIO SETUP

Enable Speaker

Volume 100

Enable Microphone

Volume 100

Save Settings Don't Save Settings

Second - The amount of image frames rendered by the camera per second.

bps - Bits per Second - Higher value means a higher quality image but consumes more network bandwidth.

JPEG Quality - Is the image quality level of JPEG images captured.

RTSP URL - Is the URL used to connect to the camera when viewing from a mobile device or PDA. (i.e. rtsp://EXAMPLE.dlinkdns.com/3gpp).

Most cell phones only support small resolutions such as 176x120 and low bitrates.

We suggest using a resolution of 176x120 at 5 FPS and 20K BPS to watch images on your cell phone or pda.

Done

D-LINK CORPORATION | INTERNET CAMERA | SETUP - Windows Internet Explorer

http://192.168.10.234/eng/admin/mot_detect.cgi

File Edit View Favorites Tools Help

D-LINK CORPORATION | INTERNET CAMERA | SETUP

Product: DCS-3410 Firmware Version: 1.00

D-Link

DCS-3410 // LIVE VIDEO SETUP MAINTENANCE STATUS HELP

Setup Wizard
Network Setup
Dynamic DNS
Image Setup
Audio and Video
Motion Detection
Time and Date
Recording
Snapshot
Digital Output
RS-485
Logout


MOTION DETECTION

In order to use motion detection, you must first check the checkboxes, then draw the areas you want to monitor for motion.

Save Settings Don't Save Settings

LIVE VIDEO

Enable Video Motion



Sensitivity
90 0~100%

Drawing Mode

Draw motion area
 Erase motion area

Clear

Save Settings Don't Save Settings

Helpful Hints..

Sensitivity - Set the sensitivity for motion detection.

High sensitivity makes the motions easier to be detected.

Draw motion area - Drag your mouse to add motion detection range.

Erase motion area - Drag your mouse to erase motion detection range.

SECURITY

http://192.168.10.234/eng/index.cgi

D-LINK CORPORATION | INTERNET CAMERA | SETUP - Windows Internet Explorer

http://192.168.10.234/eng/admin/tools_system.cgi

File Edit View Favorites Tools Help

D-LINK CORPORATION | INTERNET CAMERA | SETUP

Dynamic DNS
Image Setup
Audio and Video
Motion Detection
Time and Date
Recording
Snapshot
Digital Output
RS-485
Logout

You can set the current time for the camera.

Save Settings Don't Save Settings

TIME CONFIGURATION

Time Zone (GMT+10:00) Canberra, Melbourne, Sydney

Enable Daylight Saving

Auto Daylight Saving

Set date and time manually

Offset +1:00

Month	Week	Day of week	Hour	Minutes
3	2	Sunday	2	00
11	1	Sunday	2	00

Start time

End time

AUTOMATIC TIME CONFIGURATION

Synchronize with NTP Server

NTP Server << Select NTP Server

SET DATE AND TIME MANUALLY

Set date and time manually

Year 1970 Month 1 Day 1

Hour 11 Minute 7 Second 7

Copy Your Computer's Time Settings

Save Settings Don't Save Settings

and time zone will allow you to have accurate logs and proper scheduling for recordings.

D-LINK CORPORATION | INTERNET CAMERA | SETUP - Windows Internet Explorer

http://192.168.10.234/eng/admin/recorder.cgi

File Edit View Favorites Tools Help

D-LINK CORPORATION | INTERNET CAMERA | SETUP

Dynamic DNS
Image Setup
Audio and Video
Motion Detection
Time and Date
Recording
Snapshot
Digital Output
RS-485
Logout

In this section, you can set up the camera's recording settings.

Save Settings Don't Save Settings

RECORDING

Enable recording

Record to samba network drive

Samba Auth Account

User name Account

Password Anonymous

admin

Password

Password confirm

Server 192.168.10.147

Shared folder test

Test

Samba status : disabled Get status

Recording Options

Resolution profile 1

Record until 4000 MB of free space is left (minimum is 32MB)

When storage is full:

Stop recording

Overwrite older recordings

Scheduling

Continuous

Event Based

Motion detection triggered recording

Digital input 1 triggered recording

Digital input 2 triggered recording

Prerecord 0 seconds (range 0 to 15 seconds)

Postrecord 0 seconds (range 0 to 15 seconds)

Scheduled

you to record to a Samba network drive based on the selected events. To enable recording, check the Enable Recording checkbox. Next, select a Scheduling method to specify when the camera should record video.

D-LINK CORPORATION | INTERNET CAMERA | SETUP - Windows Internet Explorer

http://192.168.10.234/eng/admin/recorder.cgi

Resolution **profile 1**

Record until **4000** MB of free space is left (minimum is 32MB)

When storage is full:

- Stop recording
- Overwrite older recordings

Scheduling

- Continuous
- Event Based
 - Motion detection triggered recording
 - Digital input 1 triggered recording
 - Digital input 2 triggered recording

Prerecord **0** seconds (range 0 to 15 seconds)

Postrecord **0** seconds (range 0 to 15 seconds)

- Scheduled

	Start	Hours	Minutes	End	Hours	Minutes
<input type="checkbox"/> Sun	Start	:	:	End	:	:
<input type="checkbox"/> Mon	Start	:	:	End	:	:
<input type="checkbox"/> Tue	Start	:	:	End	:	:
<input type="checkbox"/> Wed	Start	:	:	End	:	:
<input type="checkbox"/> Thu	Start	:	:	End	:	:
<input type="checkbox"/> Fri	Start	:	:	End	:	:
<input type="checkbox"/> Sat	Start	:	:	End	:	:

Save Settings Don't Save Settings

SECURITY

Copyright © 2007-2008 D-Link Corporation.

D-LINK CORPORATION | INTERNET CAMERA | SETUP - Windows Internet Explorer

http://192.168.10.234/eng/admin/adv_snapshot.cgi

Audio and Video

Motion Detection

Time and Date

Recording

Snapshot

Digital Output

RS-485

Logout

TRIGGER

- Enable Snapshot

Trigger Event

- Motion Detection
- D/I Signal 1
- D/I Signal 2

Send to:

- E-mail Address

User Name	support
Password	*****
SMTP Mail Server	andromeda
Sender E-mail Address	support@dlink.com.au
Recipient E-mail Address	support@dlink.com.au
Port	25
Test	
- FTP Server

User Name	anonymous
Password	
Host Name	192.168.10.202
Path	
Filename Prefix	DCS-3410
Port	21
Passive Mode	<input checked="" type="checkbox"/>

Save Settings Don't Save Settings

Product: DCS-3410 Firmware Version: 1.00

D-Link

DCS-3410	LIVE VIDEO	SETUP	MAINTENANCE	STATUS	HELP	
<ul style="list-style-type: none"> Setup Wizard Network Setup Dynamic DNS Image Setup Audio and Video Motion Detection Time and Date Recording Snapshot Digital Output RS-485 Logout 	<h3 style="background-color: #f4a460; padding: 2px;">DIGITAL OUTPUT</h3> <p>Here you can enable your D/O port as well as how the event will be triggered.</p> <p style="text-align: center;"> <input type="button" value="Save Settings"/> <input type="button" value="Don't Save Settings"/> </p> <hr/> <h3 style="background-color: #333; color: white; padding: 2px;">TRIGGER</h3> <p><input type="checkbox"/> Enable D/O Signal</p> <p>Trigger Event</p> <ul style="list-style-type: none"> <input type="checkbox"/> Motion Detection <input type="checkbox"/> D/I Signal 1 <input type="checkbox"/> D/I Signal 2 <p style="text-align: center;"> <input type="button" value="Save Settings"/> <input type="button" value="Don't Save Settings"/> </p>			<h3 style="background-color: #333; color: white; padding: 2px;">Helpful Hints..</h3> <p>You may choose a trigger event like Motion detection or triggers from the D/I port. When an event is triggered, the D/O will begin sending a signal.</p>		

SECURITY

Copyright © 2007-2008 D-Link Corporation.

Product: DCS-3410 Firmware Version: 1.00

D-Link

DCS-3410	LIVE VIDEO	SETUP	MAINTENANCE	STATUS	HELP	
<ul style="list-style-type: none"> Setup Wizard Network Setup Dynamic DNS Image Setup Audio and Video Motion Detection Time and Date Recording Snapshot Digital Output RS-485 Logout 	<h3 style="background-color: #f4a460; padding: 2px;">RS-485</h3> <p>This section enable you to specify the camera RS-485 settings.</p> <p style="text-align: center;"> <input type="button" value="Save Settings"/> <input type="button" value="Don't Save Settings"/> </p> <hr/> <h3 style="background-color: #333; color: white; padding: 2px;">RS-485</h3> <p><input checked="" type="checkbox"/> Support PAN-TILT</p> <p>Protocol: <input type="text" value="Pelco-D"/></p> <p>ID: <input type="text" value="1"/></p> <p>Baud Rate: <input type="text" value="2400"/></p> <p>Data Bits: <input checked="" type="radio"/> 7 <input type="radio"/> 8</p> <p>Stop Bit: <input checked="" type="radio"/> 1 <input type="radio"/> 2</p> <p>Parity Bit: <input checked="" type="radio"/> No <input type="radio"/> Even <input type="radio"/> Odd</p>			<h3 style="background-color: #333; color: white; padding: 2px;">Helpful Hints..</h3> <p>ID value is between 1 and 255. ID is used to identify RS-485 device</p> <p>Stop bit can be set to either 1 bit or 2 bits.</p> <p>When enabling Support PAN-TILT a control panel will be displayed on the Live Video page allowing control through RS-485 for an external camera enclosure.</p> <p>Protocol - Select the FTZ standard used to connect a PTZ scanner via the serial interface: RS-485.</p> <p>Baud Rate - Select the desired baud rate for the device you connected.</p> <p>Stop Bit - Select the desired stop bits for the device you connected.</p> <p>Data Bits - Select the desired data bits for the device you connected.</p> <p>Parity Bit - Select the desired parity type for the device you connected.</p>		

D-LINK CORPORATION | INTERNET CAMERA | SETUP - Windows Internet Explorer

http://192.168.10.234/eng/admin/rs-485.cgi

Product: DCS-3410 Firmware Version: 1.00

D-Link

DCS-3410 // LIVE VIDEO SETUP MAINTENANCE STATUS HELP

Setup Wizard
Network Setup
Dynamic DNS
Image Setup
Audio and Video
Motion Detection
Time and Date
Recording
Snapshot
Digital Output
RS-485
Logout

RS-485

This section enable you to specify the camera RS-485 settings.

Save Settings Don't Save Settings

RS-485

Support PAN-TILT

Protocol

ID

Baud Rate

Data Bits 7 8

Stop Bit 1 2

Parity Bit No Even Odd

Helpful Hints...

ID value is between 1 and 255. ID is used to identify RS-485 device

Stop bit can be set to either 1 bit or 2 bits.

When enabling Support PAN-TILT a control panel will be displayed on the Live Video page allowing control through RS-485 for an external camera enclosure.

Protocol - Select the PTZ standard used to connect a PTZ scanner via the serial interface: RS-485.

Baud Rate - Select the desired baud rate for the device you connected.

Stop Bit - Select the desired stop bits for the device you connected.

Data Bits - Select the desired data bits for the device you connected.

Parity Bit - Select the desired parity type for the device you connected.

D-LINK CORPORATION | INTERNET CAMERA | MAINTENANCE - Windows Internet Explorer

http://192.168.10.234/eng/admin/tools_admin.cgi

DCS-3410 // LIVE VIDEO SETUP MAINTENANCE STATUS HELP

Device Management
Backup and Restore
Firmware Upgrade
Logout

DEVICE MANAGEMENT

Here you can change the administrator's password for your camera as well as add and/or delete user account(s). You can configure the information, such as camera's name via this page. You can also enable the OSD (On-Screen Display) feature in order to display the camera name and time stamp for your video recordings.

ADMIN PASSWORD SETTING

New Password 30 characters maximum

Retype Password Save

ADD USER ACCOUNT

User Name 20 users maximum

New Password 30 characters maximum

Retype Password Add

USER LIST

User Name Delete

DEVICE SETTING

Camera Name 30 characters maximum

Helpful Hints...

Enabling OSD, the camera name and time will be displayed on the video screen for the user.

For security purposes, it is recommended that you change the password for your administrator account. Be sure to write down the new password to avoid having to reset the camera in the event that it is forgotten.

D-LINK CORPORATION | INTERNET CAMERA | MAINTENANCE - Windows Internet Explorer

http://192.168.10.234/eng/admin/tools_admin.cgi

File Edit View Favorites Tools Help

D-LINK CORPORATION | INTERNET CAMERA | MAINT...

New Password 30 characters maximum

Retype Password

ADD USER ACCOUNT

User Name 20 users maximum

New Password 30 characters maximum

Retype Password

USER LIST

User Name

DEVICE SETTING

Camera Name 30 characters maximum

Enable OSD

Label

Show time

your administrator account. Be sure to write down the new password to avoid having to reset the camera in the event that it is forgotten.

SECURITY

Copyright © 2007-2008 D-Link Corporation

D-LINK CORPORATION | INTERNET CAMERA | MAINTENANCE - Windows Internet Explorer

http://192.168.10.234/eng/admin/tools_default.cgi

File Edit View Favorites Tools Help

D-LINK CORPORATION | INTERNET CAMERA | MAINT...

Product: DCS-3410
Firmware Version: 1.00

D-Link

DCS-3410	LIVE VIDEO	SETUP	MAINTENANCE	STATUS	HELP
<ul style="list-style-type: none"> Device Management Backup and Restore Firmware Upgrade Logout 	<p style="text-align: center; background-color: #f4a460; margin: 0;">BACKUP AND RESTORE</p> <p style="background-color: #f4a460; margin: 0;">Here you may backup, restore, and reboot your camera.</p> <hr/> <p>SYSTEM</p> <p>Save To Local Hard Drive <input type="button" value="Save Configuration"/></p> <p>Load From Local Hard Drive <input type="text"/> <input type="button" value="Browse..."/></p> <p style="text-align: center;"><input type="button" value="Load Configuration"/></p> <p>Restore To Factory Defaults <input type="button" value="Restore Factory Defaults"/></p> <p>Reboot Device <input type="button" value="Reboot Device"/></p>				<p>Helpful Hints..</p> <p>After the factory's default settings have been restored, use the installation wizard software provided with your camera to search and connect to the camera.</p>

SECURITY

Done

Product: DCS-3410 Firmware Version: 1.00

D-Link

DCS-3410	LIVE VIDEO	SETUP	MAINTENANCE	STATUS	HELP
Device Management Backup and Restore Firmware Upgrade Logout	<h3>FIRMWARE UPGRADE</h3> <p>A new firmware upgrade may be available for your IP camera. It is recommended to keep your IP camera firmware up-to-date to maintain and improve the functionality and performance of your internet camera. Click here D-Link Support Page to check for the latest firmware version available.</p> <p>To upgrade the firmware on your IP camera, please download and save the latest firmware version from the D-Link Support Page to your local hard drive. Locate the file on your local hard drive by clicking the Browse button. Once you have found and opened the file using the browse button, click the "Upload" button to start the firmware upgrade.</p> <h4>FIRMWARE INFORMATION</h4> <p>Current Firmware Version: 1.00 Current Product Name: DCS-3410</p> <h4>FIRMWARE UPGRADE</h4> <p>File Path: <input type="text"/> <input type="button" value="Browse..."/> <input type="button" value="Upload"/></p>			<h4>Helpful Hints..</h4> <p>Firmware upgrade are released periodically to improve the functionality of your IP camera and also to add new features. If you run into a problem with a specific feature of the IP camera, check our support site by clicking here to check for an upgrade and see if updated firmware is available for your IP camera.</p>	
<h2>SECURITY</h2>					

Copyright © 2007-2008 D-Link Corporation

Product: DCS-3410 Firmware Version: 1.00

D-Link

DCS-3410	LIVE VIDEO	SETUP	MAINTENANCE	STATUS	HELP																					
Device Info Log Logout	<h3>DEVICE INFO</h3> <p>All of your network connection details are displayed on this page. The firmware version is also displayed here.</p> <h4>INFORMATION</h4> <table border="1"> <tr><td>Camera Name</td><td>DCS-3410</td></tr> <tr><td>Time & Date</td><td>Thu Jan 1 11:09:01 1970</td></tr> <tr><td>Firmware Version</td><td>1.00, 1820</td></tr> <tr><td>MAC Address</td><td>00:1E:58:9F:31:DA</td></tr> <tr><td>IP Address</td><td>192.168.10.234</td></tr> <tr><td>IP Subnet Mask</td><td>255.255.255.0</td></tr> <tr><td>Default Gateway</td><td>192.168.10.254</td></tr> <tr><td>Primary DNS</td><td>192.168.0.249</td></tr> <tr><td>Secondary DNS</td><td>192.168.0.243</td></tr> <tr><td>PPPoE</td><td></td></tr> <tr><td>DDNS</td><td>OK</td></tr> </table>			Camera Name	DCS-3410	Time & Date	Thu Jan 1 11:09:01 1970	Firmware Version	1.00, 1820	MAC Address	00:1E:58:9F:31:DA	IP Address	192.168.10.234	IP Subnet Mask	255.255.255.0	Default Gateway	192.168.10.254	Primary DNS	192.168.0.249	Secondary DNS	192.168.0.243	PPPoE		DDNS	OK	<h4>Helpful Hints..</h4> <p>This page displays all the information about the camera and network settings.</p>
Camera Name	DCS-3410																									
Time & Date	Thu Jan 1 11:09:01 1970																									
Firmware Version	1.00, 1820																									
MAC Address	00:1E:58:9F:31:DA																									
IP Address	192.168.10.234																									
IP Subnet Mask	255.255.255.0																									
Default Gateway	192.168.10.254																									
Primary DNS	192.168.0.249																									
Secondary DNS	192.168.0.243																									
PPPoE																										
DDNS	OK																									
<h2>SECURITY</h2>																										

Internet | Protected Mode: Off 100%

D-LINK CORPORATION | INTERNET CAMERA | STATUS - Windows Internet Explorer

http://192.168.10.234/eng/admin/web_log.cgi

Product: DCS-3410 Firmware Version: 1.00

D-Link

DCS-3410	LIVE VIDEO	SETUP	MAINTENANCE	STATUS	HELP
-----------------	-------------------	--------------	--------------------	---------------	-------------

Device Info

Log

Logout

SYSTEM LOG

The system log records camera events that have occurred.

CURRENT LOG

```
1969-12-31 12:16:13 System is booted up.
1970-01-01 05:18:56 System is booted up.
1970-01-01 05:29:49 System is rebooting.
1970-01-01 05:30:36 System is booted up.
1970-01-01 06:53:57 Motion is detected.
1970-01-01 06:54:24 Motion is inactive.
1970-01-01 06:54:38 Motion is detected.
1969-12-31 12:18:38 System is booted up.
1969-12-31 12:00:29 System is booted up.
```

Clear Download

Helpful Hints...

You can save the log to your local hard drive by clicking the Download button, and you can clear the log by clicking on the Clear button.

SECURITY

Copyright © 2007-2008 D-Link Corporation

D-LINK CORPORATION | INTERNET CAMERA | LOGOUT - Windows Internet Explorer

http://192.168.10.234/eng/admin/logout.cgi

LOGOUT

Logging out will close the browser.

Logout

Done