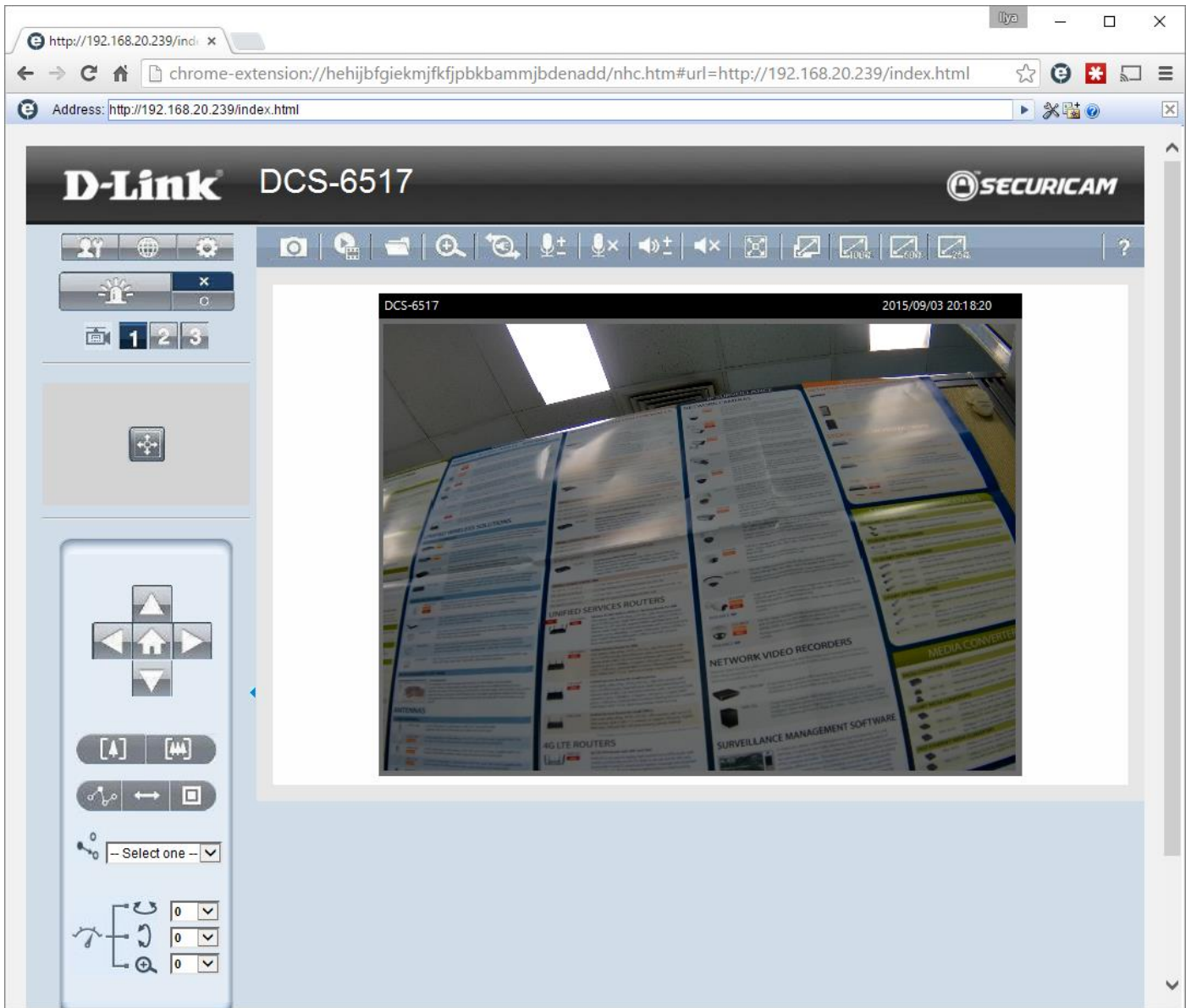


DCS-6517

Firmware 1.01



System Overview

chrome-extension://hehijbfgiekmjfkfjpbkbammjbdenadd/nhc.htm?url=http://192.168.20.239/setup/systemovr

Address: http://192.168.20.239/setup/systemoverview.html

D-Link DCS-6517 **SECURICAM**

192.168.20.239

System Overview

- System Overview
 - Audio and Video
 - Video Settings
 - Image Settings
 - Audio Settings
 - Day and Night Settings
 - Network
 - Event Management
 - Recording
 - PTZ Control
 - System

System Overview

Device Information

IP address	192.168.20.239
Link-local address	169.254.246.93
Current firmware version	v1.01.00
Current firmware date	2 Oct 2015
Hardware version	A
Model name	DCS-6517
MAC address	B0:C5:54:0D:15:AF
Connect client	0

Time and Date

Current system time	3 Sep 2015 20:18:31
System up time	0 Days, 0 Hours, 36 Minutes
Time mode	Manually

Service Status

Service	Enabled / Disabled	Protocol	Server port
HTTP	Enable	TCP	80
Secondary HTTP	Enable	TCP	8080
HTTPS	Disable	TCP	443
RTSP	Enable	TCP	554
UPnP presentation	Enable	-	-
UPnP port forwarding	Disable	-	-
802.1x	Disable	-	-
CoS	Disable	-	-

System Overview

- Audio and Video
 - Video Settings
 - Image Settings
 - Audio Settings
 - Day and Night Settings
- Network
- Event Management
- Recording
- PTZ Control
- System

Video Settings

Video Options

Viewing Window

Sensor Settings

Aspect Ratio

4:3 16:9 Save

Video Quality Settings for Stream 1

- H.264
 - 1280x960
 - 1600x1200
 - 2048x1536
 - 2560x1920
- Frame size
- Maximum frame rate 15 fps
- Intra frame period 1 S
- Video quality
 - Constant bit rate 6 Mbps
 - Fixed quality Excellent
- JPEG

Video Quality Settings for Stream 2

- H.264
 - 1280x960
- Frame size
- Maximum frame rate 15 fps
- Intra frame period 1 S
- Video quality
 - Constant bit rate 2 Mbps
 - Fixed quality Good
- JPEG

- System Overview
 - Audio and Video
 - Video Settings
 - Image Settings
 - Audio Settings
 - Day and Night Settings
 - Network
 - Event Management
 - Recording
 - PTZ Control
 - System

Video Settings

Video Options

Viewing Window

Sensor Settings

Aspect Ratio

4:3 16:9 Save

Video Quality Settings for Stream 1

H.264

Frame size: 960x540, 1280x720, 1920x1080

Maximum frame rate: 30 fps

Intra frame period: 1 S

Video quality:
 Constant bit rate: 2 Mbps
 Fixed quality: Good

JPEG

Video Quality Settings for Stream 2

H.264

Frame size: 1280x720

Maximum frame rate: 30 fps

Intra frame period: 1 S

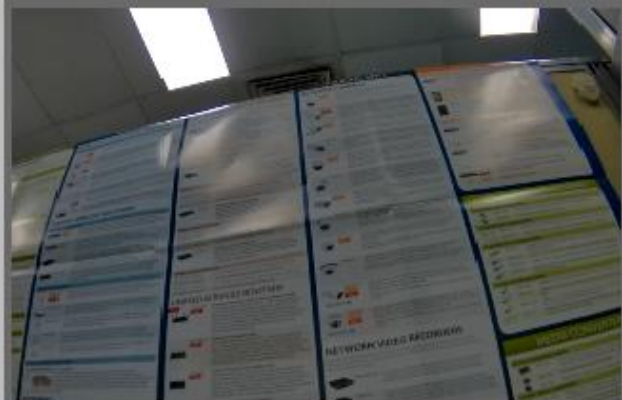
Video quality:
 Constant bit rate: 2 Mbps
 Fixed quality: Good

JPEG

Live Video

DCS-6517

2015/09/03 20:20:39



Exposure

Maximum exposure time

1/100 S ▾

Exposure level

4 ▾

Max gain

32X ▾

Status of profiles

This function is disabled

Profile 2

Preview

Restore

Save

Close

- System Overview
- Audio and Video
 - Video Settings
 - Image Settings
 - Audio Settings
 - Day and Night Settings
- Network
- Event Management
- Recording
- PTZ Control
- System

Image Settings

Live Video



Image Settings

Color Color ▾

Power line frequency 50 Hz ▾

Iris mode Outdoor ▾

Video orientation Flip

Mirror

White balance Auto ▾

Overlay title and time stamp on video

Image Settings (Profile 1)

Brightness +0 ▾

Saturation +0 ▾

Contrast +0 ▾

Sharpness +0 ▾

Status of profiles
This function is disabled

WDR Enhancement

Enable WDR

WDR Enhancement

Enable WDR

WDR Level 5 ▾

- System Overview
 - Audio and Video**
 - Video Settings
 - Image Settings
 - Audio Settings
 - Day and Night Settings
 - Network
 - Event Management
 - Recording
 - PTZ Control
 - System

Audio Settings

Audio Settings

Mute

Microphone input gain:

+9 dB

Save

- System Overview
 - Audio and Video**
 - Video Settings
 - Image Settings
 - Audio Settings
 - Day and Night Settings
 - Network
 - Event Management
 - Recording
 - PTZ Control
 - System

Day and Night Settings

ICR

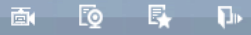
Switch to B/W in night mode

IR cut filter

Light sensor sensitivity

- Auto mode
- Day mode
- Night mode
- Synchronize with digital input
- Schedule mode

Save



System Overview

- Audio and Video
- Network**
 - IP Settings
 - Port & Access Name Settings
 - Dynamic DNS
 - HTTPS
 - Access List
 - Advanced Settings
- Event Management
- Recording
- PTZ Control
- System

IP Settings

IPv4

LAN

Get IP address automatically (DHCP)

Use fixed IP address

IP address	192.168.20.239
Subnet mask	255.255.255.0
Default router	192.168.20.254
Primary DNS	192.168.0.243
Secondary DNS	192.168.0.249

Enable UPnP presentation

Enable UPnP port forwarding

PPPoE

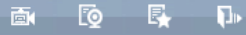
IPv6

Enable IPv6

DHCPv6

Manually setup the IP address

Save



System Overview

- Audio and Video
- Network
 - IP Settings
 - Port & Access Name Settings
 - Dynamic DNS
 - HTTPS
 - Access List
 - Advanced Settings
- Event Management
- Recording
- PTZ Control
- System

Port & Access Name Settings

HTTPS

HTTPS port 443

HTTP

Authentication Basic
HTTP port 80
Secondary HTTP port 8080
Access name for stream 1 video1.mjpg
Access name for stream 2 video2.mjpg
Access name for stream 3 video3.mjpg

RTSP Streaming

Authentication Digest
Access name for stream 1 live1.sdp
Access name for stream 2 live2.sdp
Access name for stream 3 live3.sdp

RTSP port 554
RTP port for video 5556
RTCP port for video 5557
RTP port for audio 5558
RTCP port for audio 5559

Multicast

Enable multicast for stream 1

Multicast

Enable multicast for stream 1

Multicast group address:

Multicast video port:

Multicast RTCP video port:

Multicast TTL [1~255]:

Enable multicast for stream 2

Multicast group address:

Multicast video port:

Multicast RTCP video port:

Multicast TTL [1~255]:

Enable multicast for stream 3

Multicast group address:

Multicast video port:

Multicast RTCP video port:

Multicast TTL [1~255]:

Multicast audio port:

Multicast RTCP audio port:

D-Link DCS-6517 SECURICAM

⏪ ⏩ 📷 🗨️ 📄
📄 192.168.20.239

System Overview

- 📁 Audio and Video
- 📁 Network
 - IP Settings
 - Port & Access Name Settings
 - Dynamic DNS
 - HTTPS
 - Access List
 - Advanced Settings
- 📁 Event Management
- 📁 Recording
- 📁 PTZ Control
- 📁 System

Dynamic DNS ?

DDNS Settings

Enable DDNS

Server name: <<
Input Dynamic DNS Server

Host name:

User name:

Password:

Confirm password:

Status: dis_connected

- System Overview
- Audio and Video
- Network
 - IP Settings
 - Port & Access Name Settings
 - Dynamic DNS
 - HTTPS
 - Access List
 - Advanced Settings
- Event Management
- Recording
- PTZ Control
- System

HTTPS

Enable HTTPS

Enable HTTPS secure connection

Save

Create and Install Certificate Method

Create self-signed certificate automatically

Create self-signed certificate manually

Create certificate request and install

Certificate Information

Status: Not installed

- System Overview
- Audio and Video
- Network
 - IP Settings
 - Port & Access Name Settings
 - Dynamic DNS
 - HTTPS
 - Access List
 - Advanced Settings
- Event Management
- Recording
- PTZ Control
- System

Access List

General Settings

Maximum number of concurrent streaming connection(s) limited to 10

Enable access list filtering

Save

Filter Type

Allow Deny

Save

Filter

IPv4 Access List

--

Administrator IP Address

Always allow the IP address to access this device

Save

- System Overview
- Audio and Video
- Network
 - IP Settings
 - Port & Access Name Settings
 - Dynamic DNS
 - HTTPS
 - Access List
 - Advanced Settings
- Event Management
- Recording
- PTZ Control
- System

Advanced Settings

SNMP Configuration

- Enable SNMPv1, SNMPv2c
- Enable SNMPv3

Save

IEEE 802.1x

- Enable IEEE 802.1x

CoS

- Enable CoS

QoS / DSCP

- Enable QoS / DSCP

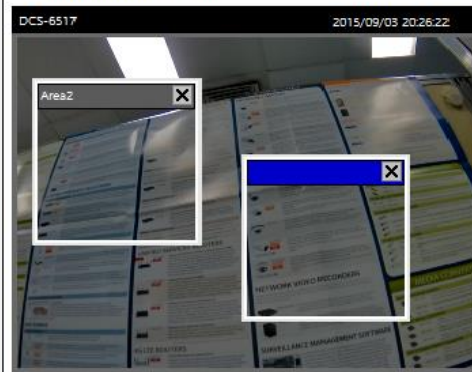
Save

- System Overview
- Audio and Video
- Network
- Event Management
 - Motion Detection
 - Tamper Detection
 - DI and DO
 - Event Settings
- Recording
- PTZ Control
- System

Motion Detection

Motion Settings

- Enable motion detection



Window name

Sensitivity

60 %

Percentage

6 %



New

Save

Profile

- System Overview
- Audio and Video
- Network
- Event Management
 - Motion Detection
 - Tamper Detection
 - DI and DO
 - Event Settings
- Recording
- PTZ Control
- System

Tamper Detection

Tamper Detection Settings

Enable camera tampering detection
Trigger duration seconds [10-600]

Save

- System Overview
- Audio and Video
- Network
- Event Management
 - Motion Detection
 - Tamper Detection
 - DI and DO
 - Event Settings
- Recording
- PTZ Control
- System

DI and DO

DI and DO

Digital input: The active state is (the current state detected is High)
Digital output: The active state is (the current state detected is Open)

Save

Server Settings

Server name

Server Type

Email

Sender email address

Recipient email address

Server address

User name

Password

Server port

This server requires a secure connection (SSL)

FTP

HTTP

Network storage

Server Settings

Server name

Server Type

Email

FTP

Server address

Server port

User name

Password

FTP folder name

Passive mode

HTTP

Network storage

Server Settings

Server name

Server Type

Email

FTP

HTTP

Network storage

Network storage location

(For example: \\my_nas\diskfolder)

Workgroup

User name

Password

Media Settings

Media name

Media Type

Snapshot

Source ▼

Send pre-event image(s) [0~7]

Send post-event image(s) [0~7]

File name prefix

Video clip

System log

Media Settings

Media name

Media Type

Snapshot

Video clip

Source ▼

Pre-event recording seconds [0~5]

Maximum duration seconds [1~20]

Maximum file size Kbytes [1024~20480]

File name prefix

System log

Event Settings

Event name

Priority

Detect next event after second(s).

Note: This can only applied to motion detection and digital input

Trigger

Video motion detection

Normal

Profile

Note: Please configure [Motion Detection](#) first

Periodically

Digital input

System boot

Recording notify

Camera Tampering Detection

Event Schedule

Sun Mon Tue Wed Thu Fri Sat

Time

Always

From to [hh:mm]

Action

Trigger digital output for seconds

	Server	Media	Extra parameter	
<input type="checkbox"/>	SD	<input type="text" value="----None----"/>	<input type="button" value="SD Test"/>	<input type="button" value="View"/>
<input type="checkbox"/>	MailServer	<input type="text" value="Video"/>		
<input type="checkbox"/>	FTPserver	<input type="text" value="----None----"/>		

- System Overview
 - Audio and Video
 - Network
 - Event Management
 - Recording
 - Recording Settings
 - Local Storage
 - PTZ Control
 - System

Recording Settings

Recording

Name	Status	Sun	Mon	Tue	Wed	Thu	Fri	Sat	Time	Source	Destination
Rec	ON	V	V	V	V	V	V	V	00:00-24:00	stream1	NAS

Add Rec Delete

Recording

Recording name

Enable this recording

Priority

Source

Trigger

Schedule

Network fail

Recording Schedule

Sun Mon Tue Wed Thu Fri Sat

Time

Always

From to [hh:mm]

Destination

Capacity

Entire free space

Reserved space Mbytes

File name prefix

Record time

Enable cyclic recording

- System Overview
- Audio and Video
- Network
- Event Management
- Recording
 - Recording Settings
 - Local Storage
- PTZ Control
- System

Local Storage

SD Card Management

- SD card status: Detached
- SD card control:

Searching and Viewing the Records

File attributes:

Trigger type: Tampering System boot Recording notify Motion Periodically

Media Type: Video clip Snapshot Text

Trigger time:

From: Date Time
to: Date Time
(yyyy-mm-dd) (hh:mm:ss)

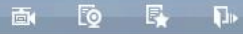
Search

Search Results

Show 10 entries Search:

Trigger time	Media Type	Trigger type
No matching records found		

Showing 0 to 0 of 0 entries



- System Overview
- Audio and Video
- Network
- Event Management
- Recording
- PTZ Control
 - Digital PTZ
- System

Digital PTZ

Digital PTZ

Select stream 1



Up

Left Home Right

Down

- Zoom +

Pan speed 0

Tilt speed 0

Zoom speed 0

Auto pan / patrol speed 1

Patrol Settings

Preset locations	Selected locations	
	Source	Dwelling time
		0
		0
		0

go Select Remove Up Down 10 Update

Preset position name Add

Preset position Delete

Save

- System Overview
 - Audio and Video
 - Network
 - Event Management
 - Recording
 - PTZ Control
 - System
 - User Settings
 - Device Settings
 - Time and Date
 - Maintenance
 - Parameter List
 - Logs

User Settings

Admin Password Setup

Password

Confirm password

Save

Add User Account

User name

Password

Confirm password

Privilege

- Administrator
- Normal user
- Guest

Add

Manage User

User name

User password

Authentication

- Administrator
- Normal user
- Guest

Modify Delete

- System Overview
 - Audio and Video
 - Network
 - Event Management
 - Recording
 - PTZ Control
 - System
 - User Settings
 - Device Settings
 - Time and Date
 - Maintenance
 - Parameter List
 - Logs

Device Settings

LED Settings

Turn off the LED indicator

Camera Name

Camera Name

Save

- System Overview
 - Audio and Video
 - Network
 - Event Management
 - Recording
 - PTZ Control
 - System
 - User Settings
 - Device Settings
 - Time and Date
 - Maintenance
 - Parameter List
 - Logs

Time and Date

Time Configuration

Current server time: 3 Sep 2015 20:38:53
Time zone: GMT+10:00 Brisbane, Canberra, Melbourne, Sydney, Guam, Vladivostok
Enable daylight saving:
Daylight saving time:
DST start: Month: Mar, Week: 1st, Day of week: Sun, Time: 12 am
DST end: Month: Nov, Week: 1st, Day of week: Sun, Time: 12 am

Automatic Time Configuration

Enable Automatic Time Configuration
NTP server: <input type="text"/> << Select NTP server
Updating interval: One day

Set the Date and Time Manually

Year: 2015, Month: 09, Day: 03
Hour: 20, Minute: 38, Second: 53
Copy Your Computer's Time Settings

Save

- System Overview
 - Audio and Video
 - Network
 - Event Management
 - Recording
 - PTZ Control
 - System
 - User Settings
 - Device Settings
 - Time and Date
 - Maintenance
 - Parameter List
 - Logs

Maintenance

Schedule Reboot

Schedule Reboot

Sun Mon Tue Wed Thu Fri Sat

00 hh 00 mm Save

Reboot

Reboot the device Reboot

Restore to Default

Restore all settings to factory default Default

Export Files

Export setting backup file Export

Upload Files

Upload setting backup file Browse... Upload

Firmware Upgrade

File path Browse... Upload

- System Overview
 - Audio and Video
 - Network
 - Event Management
 - Recording
 - PTZ Control
 - System
 - User Settings
 - Device Settings
 - Time and Date
 - Maintenance
 - Parameter List
 - Logs

Parameter List

```
CFGAD_S
DayLux=7
NightLux=3
CE_Intensity=5
AWB_Scene_Mode=0
enable_cos=0
cos_vlan_id=4095
cos_class0=0
cos_class1=0
cos_class2=0
enable_802_1x=0
eapol_version=0
identity=
privkey_password=
ca_cert_status=
client_cert_status=
private_key_status=
enable_dscp=0
dscp_class0=0
dscp_class1=0
dscp_class2=0
eptz_speed_p=0
eptz_speed_t=0
eptz_speed_z=0
eptz_speed_run=1
eptz_act1=0
eptz_act2=0
eptz_act3=0
eptz_act4=0
```


System Overview

- Audio and Video
- Network
- Event Management
- Recording
- PTZ Control
- System
 - User Settings
 - Device Settings
 - Time and Date
 - Maintenance
 - Parameter List
 - Logs

Logs

```
[ 2015/09/03 20:08:43 ] 192.168.20.244 login by admin.
[ 2015/09/03 19:46:03 ] 192.168.20.244 login by admin.
[ 2015/09/03 19:41:25 ] 192.168.20.244 login by admin.
[ 2015/09/03 19:41:16 ] System boot.
[ 2015/09/03 19:27:28 ] 192.168.20.244 login by admin.
[ 2015/09/03 19:25:55 ] System boot.
[ 2015/09/03 19:21:14 ] 192.168.20.244 login by admin.
[ 2015/09/03 19:19:34 ] System boot.
[ 2015/08/20 21:52:41 ] 192.168.20.244 login by admin.
[ 2015/08/20 21:42:18 ] 192.168.20.244 login by admin.
[ 2015/08/20 21:38:24 ] System boot.
[ 2015/08/03 10:46:01 ] 192.168.0.230 login by admin.
[ 2015/08/03 10:43:01 ] System boot.
[ 2015/08/03 10:36:54 ] 192.168.0.228 login by admin.
[ 2015/08/03 10:36:42 ] System boot.
[ 2015/08/03 10:35:59 ] Factory default.
[ 2015/08/03 10:35:39 ] System boot.
[ 2015/08/03 10:31:58 ] 192.168.0.228 login by admin.
[ 2015/08/03 10:25:35 ] 192.168.0.228 login by admin.
[ 2015/08/03 10:25:14 ] System boot.
[ 2015/08/03 09:47:58 ] 192.168.0.230 login by admin.
[ 2015/08/03 09:47:49 ] System boot.
[ 2015/08/03 09:42:45 ] 192.168.0.230 login by admin.
[ 2015/08/03 09:42:33 ] System boot.
```