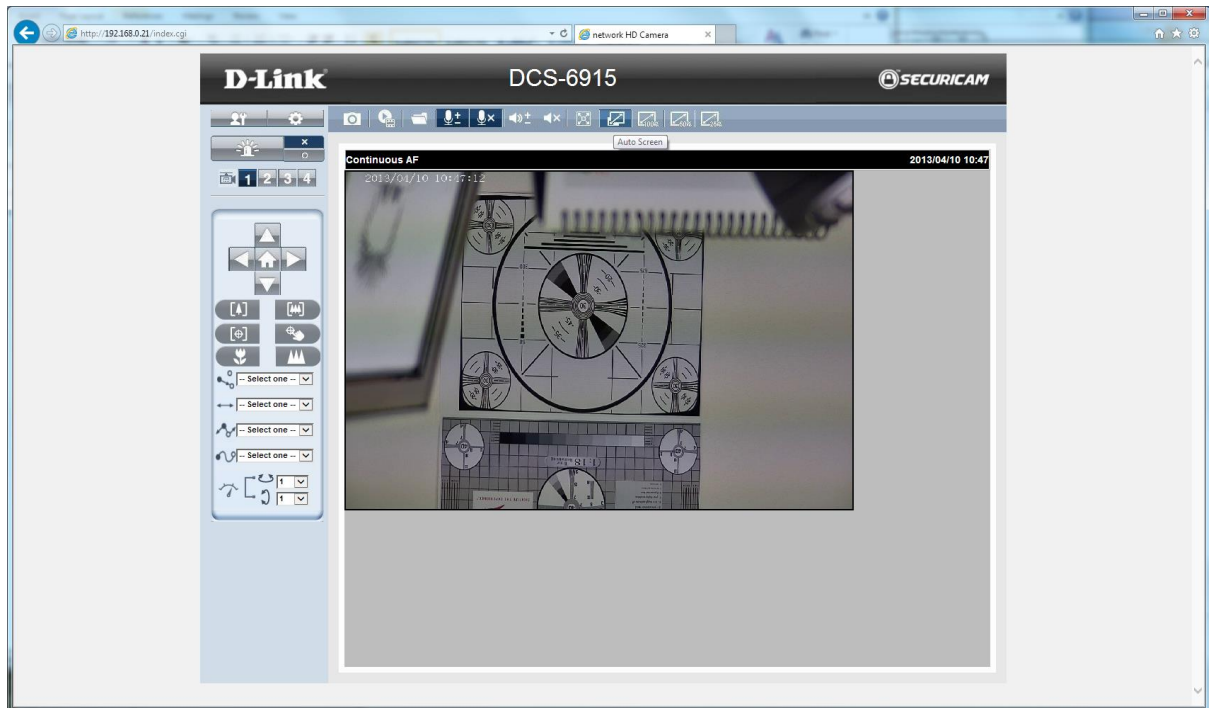


DCS-6513

Firmware 1.00.12

192.168.0.20 admin/<blank>



Browser address bar: http://192.168.0.21/D_LINK/systemoverview.html | network HD Camera | 192.168.0.21

System Overview

- Audio and Video
- Network
- Event Management
- Recording
- PTZ Control
- System

System Overview

Device Information

IP address	192.168.0.21
Current firmware version	V1.00.12
Current firmware date	Mar 6 2013
MAC address	28:10:7B:00:04:D8

Time and Date

Current system time	2013/4/10 10:51:25
System up time	1:07, Days, average: 4.43
Time mode	Sync with computer

Service Status

Service	Enable/Disable	Protocol	Service port
HTTP	Enable	TCP	80
HTTPS	Enable	TCP	443
FTP	Disable	TCP	21
RTSP	Enable	UDP	554
UPnP Presentation	Enable	-	-
UPnP port forwarding	Disable	-	-
802.1x	Disable	-	-
QoS/DSCP	Disable	-	-
SNMP v1	Disable	-	-
SNMP v2	Disable	-	-
DDNS	Disable	-	-
Access list	Disable	-	-

Stream Status

Stream number	Codec type	Resolution	Max Frame Rate	Bitrate / Quality
Stream 1	H.264	1920 x 1080	25	8192
Stream 2	H.264	352 x 288	25	1024
Stream 3	H.264	352 x 288	25	1024
Stream 4	MJPEG	352 x 288	25	60

Recent Logs

System Overview

- Audio and Video
 - Video Settings
 - Image Settings
 - Audio Settings
 - Day and Night Settings
- Network
- Event Management
- Recording
- PTZ Control
- System

Video Settings

Video Options

Video Resolution :

H.264 + H.264 + H.264 + MJPEG

H.264-1 format : 1920 x 1080 (25 fps)

H.264-2 format : 352 x 288 (25 fps)

H.264-3 format : 352 x 288 (25 fps)

MJPEG format : 352 x 288 (25 fps)

Save

GOV Settings :

H.264-1 GOV Length : 50 H.264-2 GOV Length : 50

H.264-3 GOV Length : 25 H.264-4 GOV Length : 25

Save

Video Options

Sensor Settings

Video Quality Settings for Stream 1

Frame size : 1920 x 1080

Maximum frame rate : 25fps

Intra frame period : 50

Video quality

Bit rate : 8M

Fixed quality : Excellent

Video Quality Settings for Stream 2

Frame size : 352 x 288

Maximum frame rate : 25fps

Intra frame period : 50

Video quality

Bit rate : 1M

Fixed quality : Good

Video Quality Settings for Stream 3

Frame size : 352 x 288

Maximum frame rate : 25fps

Intra frame period : 25

Video quality

Bit rate : 1M

Fixed quality : Good

Video Quality Settings for Stream 4

Frame size : 352 x 288

Maximum frame rate : 25fps

System Overview

- Audio and Video
 - Video Settings
 - Image Settings
 - Audio Settings
 - Day and Night Settings
- Network
- Event Management
- Recording
- PTZ Control
- System

Video Settings

Video Options

Video Resolution :

- H.264 + H.264 + H.264 + MJPEG
- 1920 x 1080 (13 fps)
- 1920 x 1080 (25 fps)**
- 1280 x 1024 (13 fps)
- 1280 x 1024 (25 fps)
- H.264-1 format : 1280 x 720 (13 fps)
- H.264-2 format : 1280 x 720 (25 fps)
- H.264-3 format : 1024 x 768 (25 fps)
- MJPEG format : 800 x 600 (25 fps)
- 720 x 576 (25 fps)
- 640 x 480 (25 fps)
- 352 x 288 (25 fps)

GOV Settings :

- H.264-1 GOV Length : 50
- H.264-2 GOV Length : 50
- H.264-3 GOV Length : 25
- H.264-4 GOV Length : 25

Video Options

Sensor Settings

Video Quality Settings for Stream 1

- Frame size: 1920 x 1080
- Maximum frame rate: 25fps
- Intra frame period: 50
- Video quality:
 - Bit rate: 8M
 - Fixed quality: Excellent

Video Quality Settings for Stream 2

- Frame size: 352 x 288
- Maximum frame rate: 25fps
- Intra frame period: 50
- Video quality:
 - Bit rate: 1M
 - Fixed quality: Good


Video Quality Settings for Stream 3

- Frame size: 352 x 288
- Maximum frame rate: 25fps
- Intra frame period: 25
- Video quality:
 - Bit rate: 1M
 - Fixed quality: Good

Video Quality Settings for Stream 4

- Frame size: 352 x 288
- Maximum frame rate: 25fps

http://192.168.0.21/ - network HD Camera - Microsoft Internet Explorer provided by D-Link Australia



Exposure


Enable BLC

Max Gain ▼

- Full Auto
 - Slow shutter ▼
 - Maximum exposure time 1/50 ▼
 - P-Iris
 - Slow shutter ▼
 - ▼
 - F11 ▼
 - ▼
 - Iris Priority
 - Slow shutter ▼
- Manual Mode
 - Manual
 - Maximum exposure time ▼
 - Iris ▼
 - Exposure level ▼

100%

http://192.168.0.21/ - network HD Camera - Microsoft Internet Explorer provided by D-Link Australia



Exposure

Enable BLC

Max Gain ▼

- Full Auto
 - Slow shutter ▼
 - Maximum exposure time 1/ ▼
 - P-Iris
 - Slow shutter ▼
 - ▼
 - ▼
 - Iris Priority
 - Slow shutter ▼
- Manual Mode
 - Manual
 - Maximum exposure time ▼
 - Iris ▼
 - Exposure level ▼

off
 3dB
 6dB
 9dB
 12dB
 15dB
 18dB
 21dB
 24dB
 27dB
 30dB
 33dB
 36dB
 39dB
 42dB
 45dB
 48dB
 51dB
 54dB
 57dB

100%

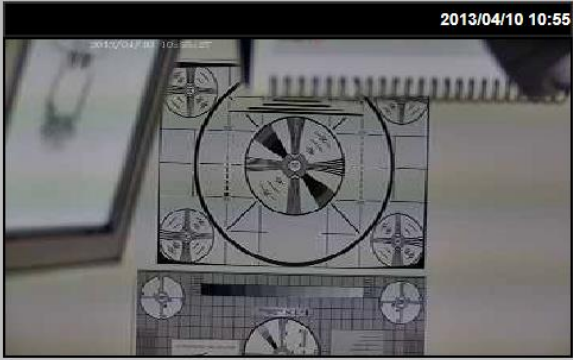
http://192.168.0.21/D_LINK/systemoverview.html network HD Camera

System Overview

- Audio and Video
 - Video Settings
 - Image Settings
 - Audio Settings
 - Day and Night Settings
- Network
- Event Management
- Recording
- PTZ Control
- System

Image Settings

Live Video



2013/04/10 10:55

Save

Image Settings 1

Color

Power line frequency

Flip

White balance

Overlay title and time stamp on video

Privacy mask

Save

Image Settings 2

Sharpness

ExpComp

WDR

2DNR

Save

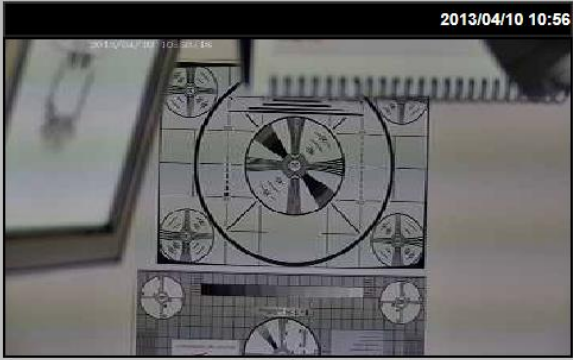
http://192.168.0.21/D_LINK/systemoverview.html network HD Camera

System Overview

- Audio and Video
 - Video Settings
 - Image Settings
 - Audio Settings
 - Day and Night Settings
- Network
- Event Management
- Recording
- PTZ Control
- System

Image Settings

Live Video



2013/04/10 10:56

Save

Image Settings 1

Color Auto
Power line frequency Indoor
Flip Outdoor
White balance ATW
Manual

Rgain: 57 [0..255]
Bgain: 54 [0..255]

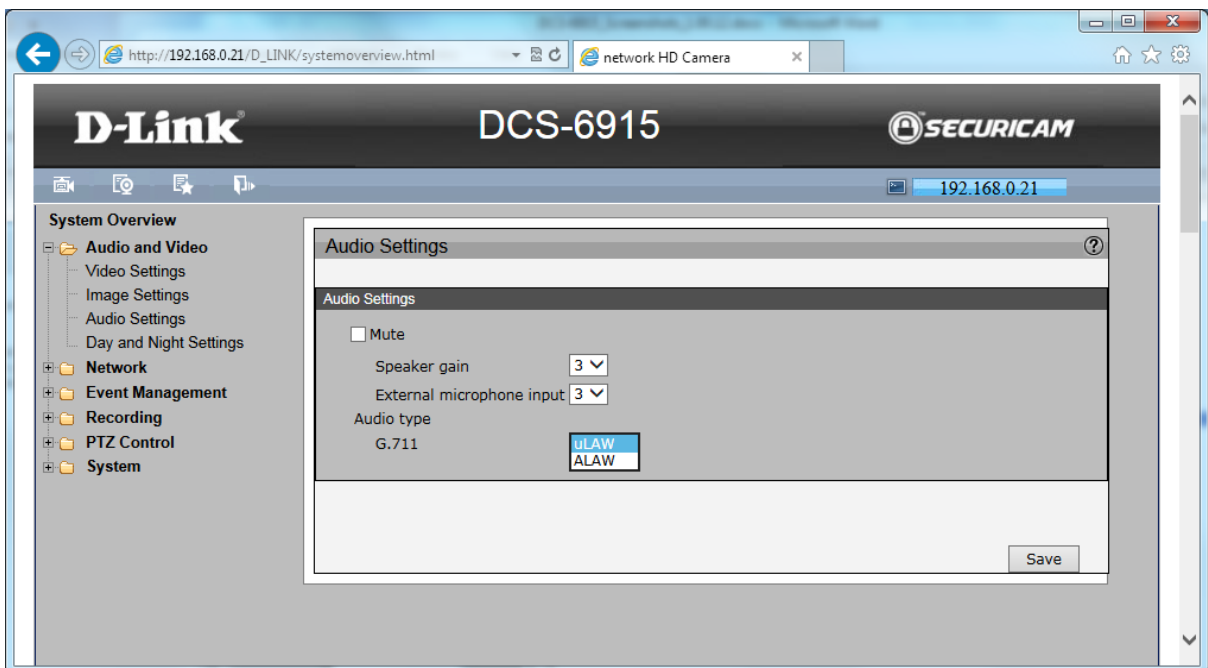
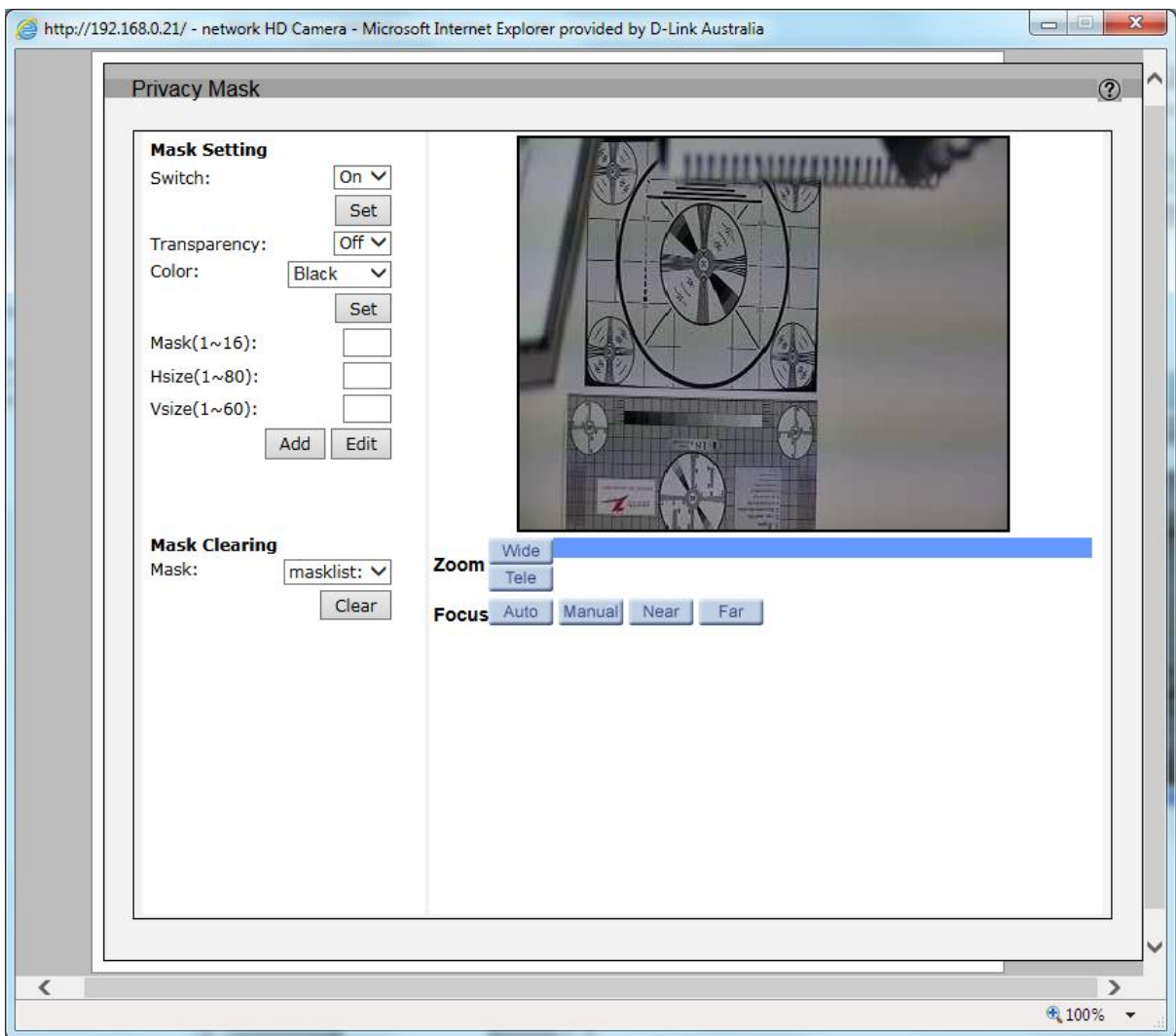
Overlay title and time stamp on video

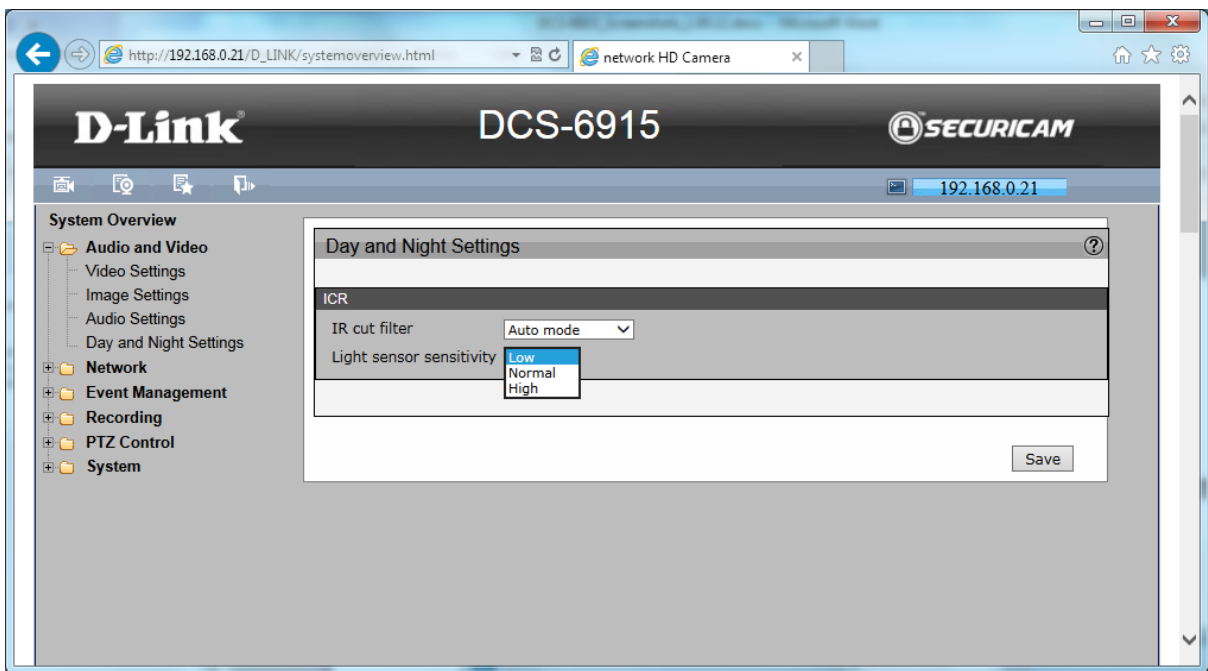
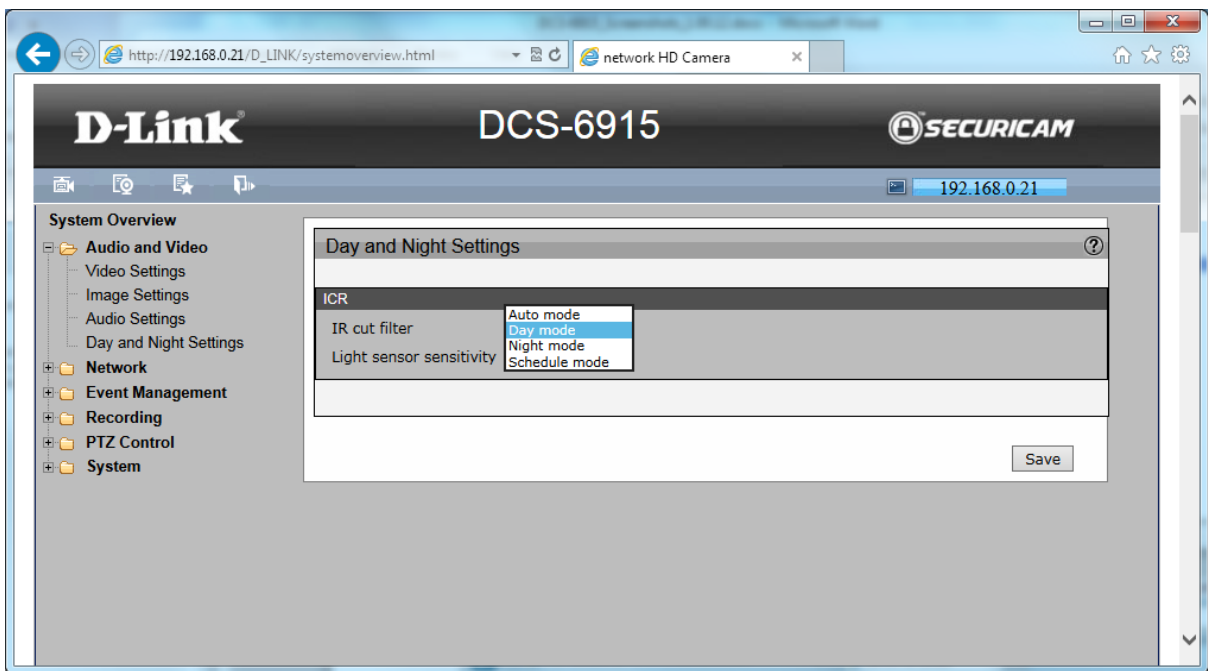
Privacy mask

Save

Image Settings 2

Sharpness 6 ▾
ExpComp 8 ▾
WDR On ▾
2DNR Off ▾





http://192.168.0.21/D_LINK/systemoverview.html network HD Camera

D-Link DCS-6915 SECURICAM

192.168.0.21

System Overview

- Audio and Video
- Network**
 - IP Settings
 - Port & Access Name Settings
 - Dynamic DNS
 - HTTPS
 - Access List
 - Advanced Settings
- Event Management
- Recording
- PTZ Control
- System

IP Settings

IPv4

LAN

Get IP address automatically(DHCP)

Use fixed IP address

IP address: 192.168.0.20

Subnet mask: 255.255.255.0

Default gateway: 192.168.0.253

Primary DNS: 4.2.2.2

Secondary DNS: 0.0.0.0

Enable UPnP presentation

Enable UPnP port forwarding

PPPoE

Save

http://192.168.0.21/D_LINK/systemoverview.html network HD Camera

D-Link DCS-6915 SECURICAM

192.168.0.21

System Overview

- Audio and Video
- Network**
 - IP Settings
 - Port & Access Name Settings
 - Dynamic DNS
 - HTTPS
 - Access List
 - Advanced Settings
- Event Management
- Recording
- PTZ Control
- System

Port & Access Name Settings

HTTPS

HTTPS port: 443

HTTP

HTTP port: 80

Access name for stream 1: ACVS-H264

Access name for stream 4: mjpg

RTSP Streaming

Authentication: Disable

Access name for stream 1: live.sdp

Access name for stream 2: live2.sdp

Access name for stream 3: live3.sdp

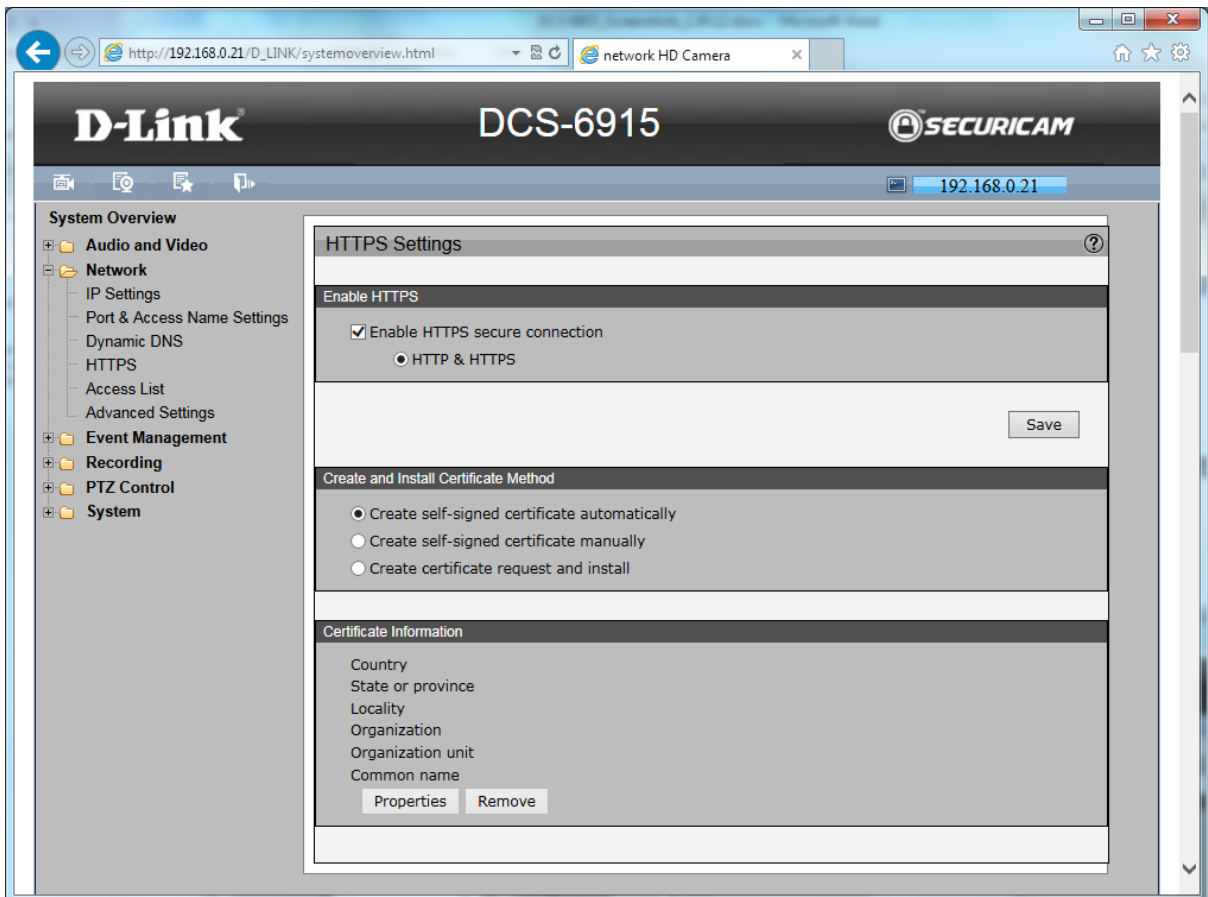
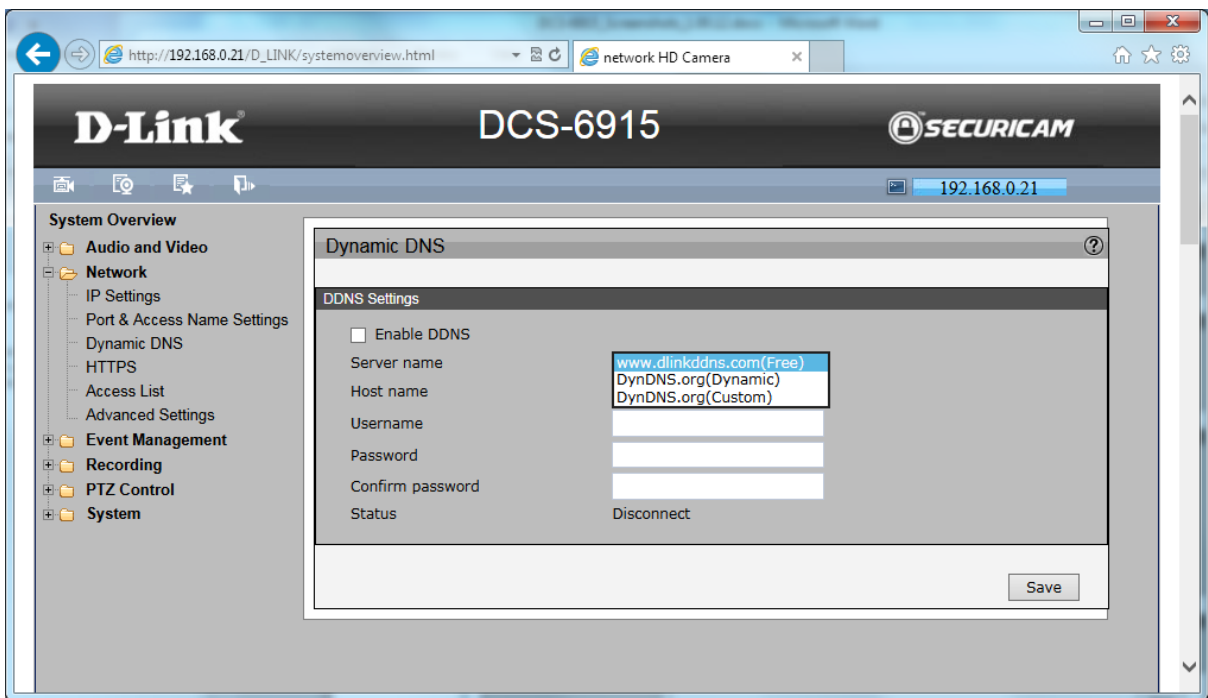
Access name for stream 4: live4.sdp

RTSP port: 554

FTP

FTP port: 21

Save



http://192.168.0.21/D_LINK/systemoverview.html network HD Camera 192.168.0.21

D-Link DCS-6915 SECURICAM

System Overview

- Audio and Video
- Network
 - IP Settings
 - Port & Access Name Settings
 - Dynamic DNS
 - HTTPS
 - Access List
 - Advanced Settings
- Event Management
- Recording
- PTZ Control
- System

Access List

General Settings

Enable access list filtering

Filter Type

Deny the following IP addresses

Save

Filter

IPv4 Access List

0.0.0.0

Delete

Add

http://192.168.0.21/D_LINK/systemoverview.html network HD Camera 192.168.0.21

D-Link DCS-6915 SECURICAM

System Overview

- Audio and Video
- Network
 - IP Settings
 - Port & Access Name Settings
 - Dynamic DNS
 - HTTPS
 - Access List
 - Advanced Settings
- Event Management
- Recording
- PTZ Control
- System

Advanced Settings

SNMP Configuration

SNMP v1/v2

Enable SNMP v1

Enable SNMP v2

Read Community: public

Write Community: private

Save

IEEE 802.1X / EAP-TLS

Enable IEEE 802.1X

QoS / DSCP

Enable QoS / DSCP

Live Video: 0

Live Audio: 0

Event / Alarm: 0

Management: 0

Save

http://192.168.0.21/D_LINK/systemoverview.html network HD Camera 192.168.0.21

D-Link DCS-6915 SECURICAM

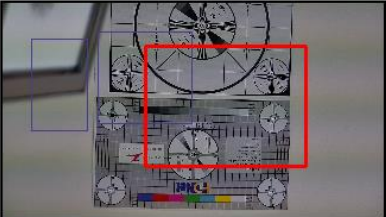
System Overview

- Audio and Video
- Network
- Event Management
 - Motion Detection
 - DI and DO
 - Event Settings
- Recording
- PTZ Control
- System

Motion Detection

Motion Settings

Enable motion detection



Motion Detection Windows

add delete

Detection level [1-100]

Sensitivity level [1-100]

save

http://192.168.0.21/D_LINK/systemoverview.html network HD Camera 192.168.0.21

D-Link DCS-6915 SECURICAM

System Overview

- Audio and Video
- Network
- Event Management
 - Motion Detection
 - DI and DO
 - Event Settings
- Recording
- PTZ Control
- System

DI and DO

DI and DO

Digital input 1: The active state is (the cuuent state detected is High)

Digital input 2: The active state is (the cuuent state detected is High)

Digital input 3: The active state is (the cuuent state detected is High)

Digital input 4: The active state is (the cuuent state detected is High)

Save

System Overview

- Audio and Video
- Network
- Event Management
 - Motion Detection
 - DI and DO
 - Event Settings
- Recording
- PTZ Control
- System

Event Settings

Server Settings

Name	Type	Address / Location
My E-Mail Server	E-mail	security@company.com.au
My FTP Server	FTP	ftp.company.com.au

Add My_E-Mail_Server Delete

Media Settings

Name	Type
------	------

Add Delete

Event Settings

Status	Status	Sun	Mon	Tue	Wed	Thu	Fri	Sat	Time	Trigger
Motion	ON	V	V	V	V	V	V	V	00:00~24:00	motion

Add Motion Delete

Server Settings

Server name

Server Type

Email

Sender email address

Recipient email address

Server address

User name

Password

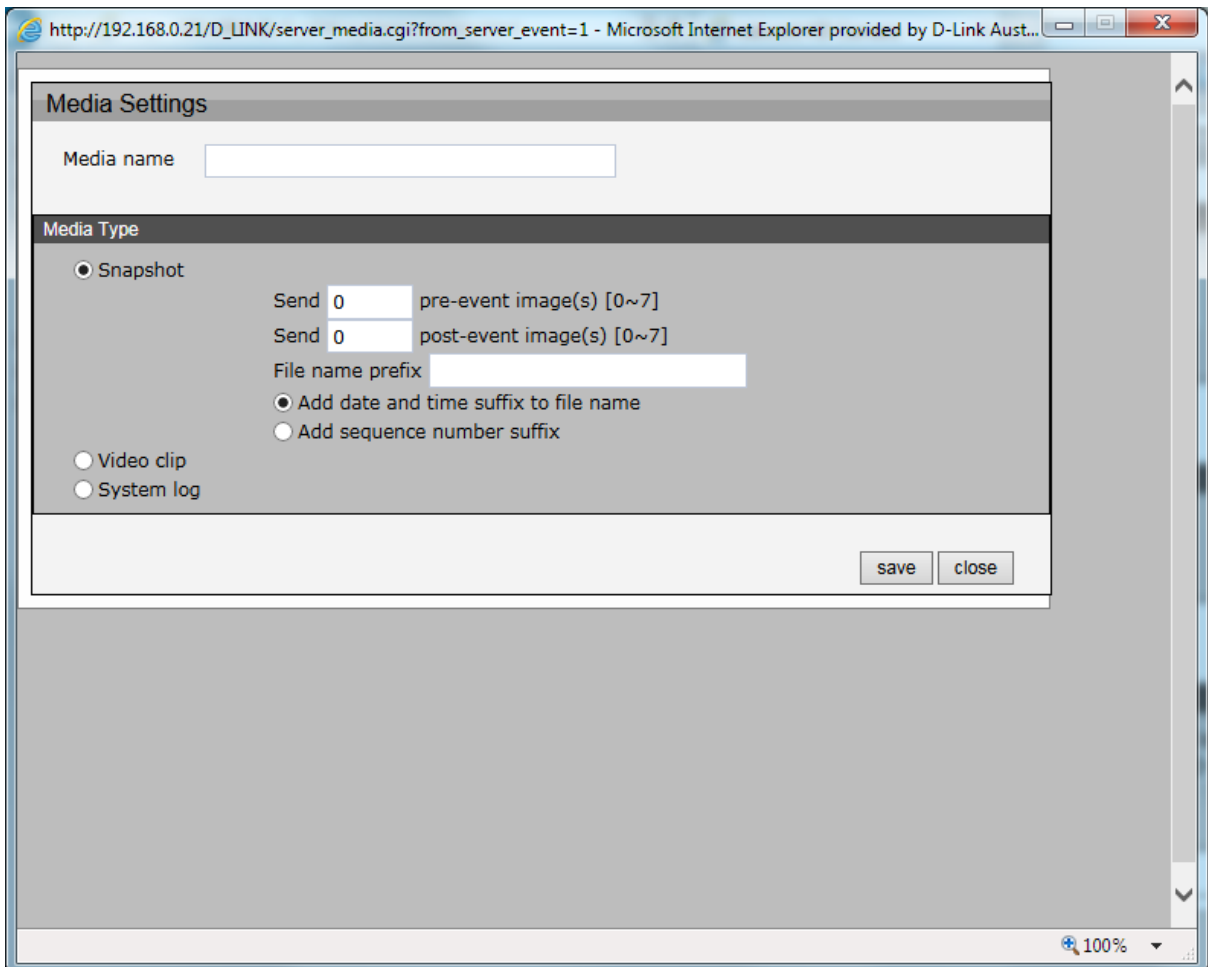
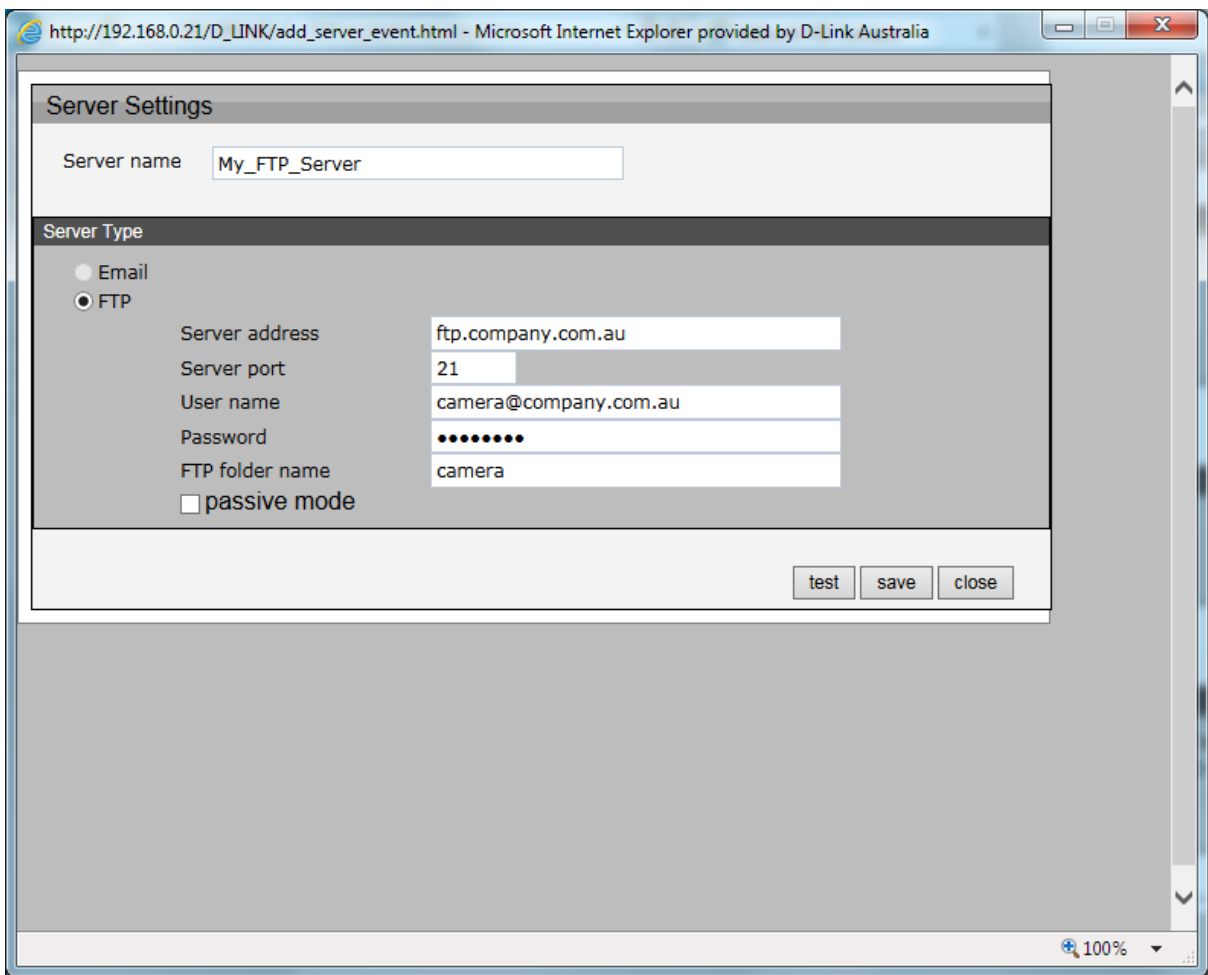
Server port

This server requires a secure connection (SSL)

FTP

test save close

100%



http://192.168.0.21/D_LINK/server_media.cgi?to_add_server_ser=1 - Microsoft Internet Explorer provided by D-Link Aust...

Event Settings

Event name

Enable this event

Trigger

Video motion detection

- Digital input 1
- Digital input 2
- Digital input 3
- Digital input 4

Event Schedule

Sun Mon Tue Wed Thu Fri Sat

Time

Always

From to [hh:mm]

Action

Trigger digital output 1 Trigger digital output 2

Server	Media	Extra parameter	
<input type="checkbox"/> SD	None ▾	<input type="button" value="SD Test"/>	<input type="button" value="View"/>
<input type="checkbox"/> Email	None ▾		
<input checked="" type="checkbox"/> FTP	None ▾		

100%

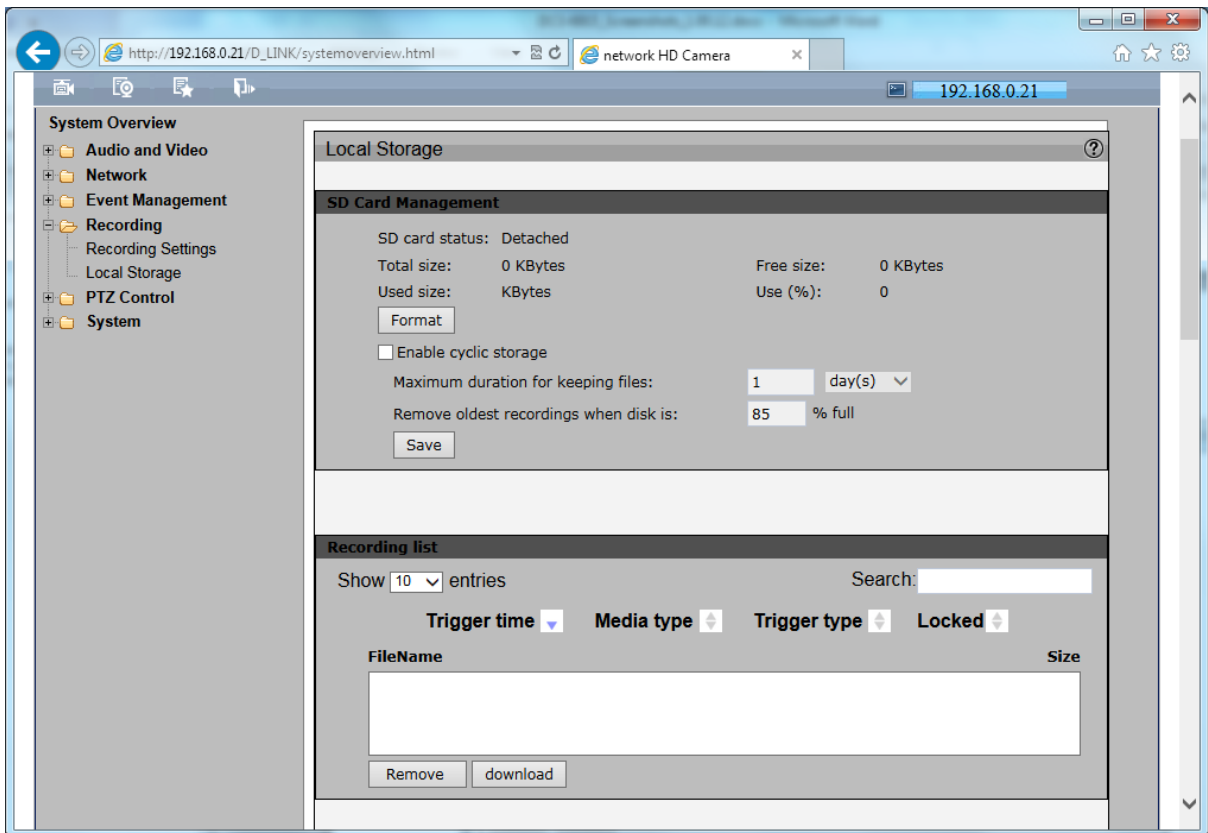
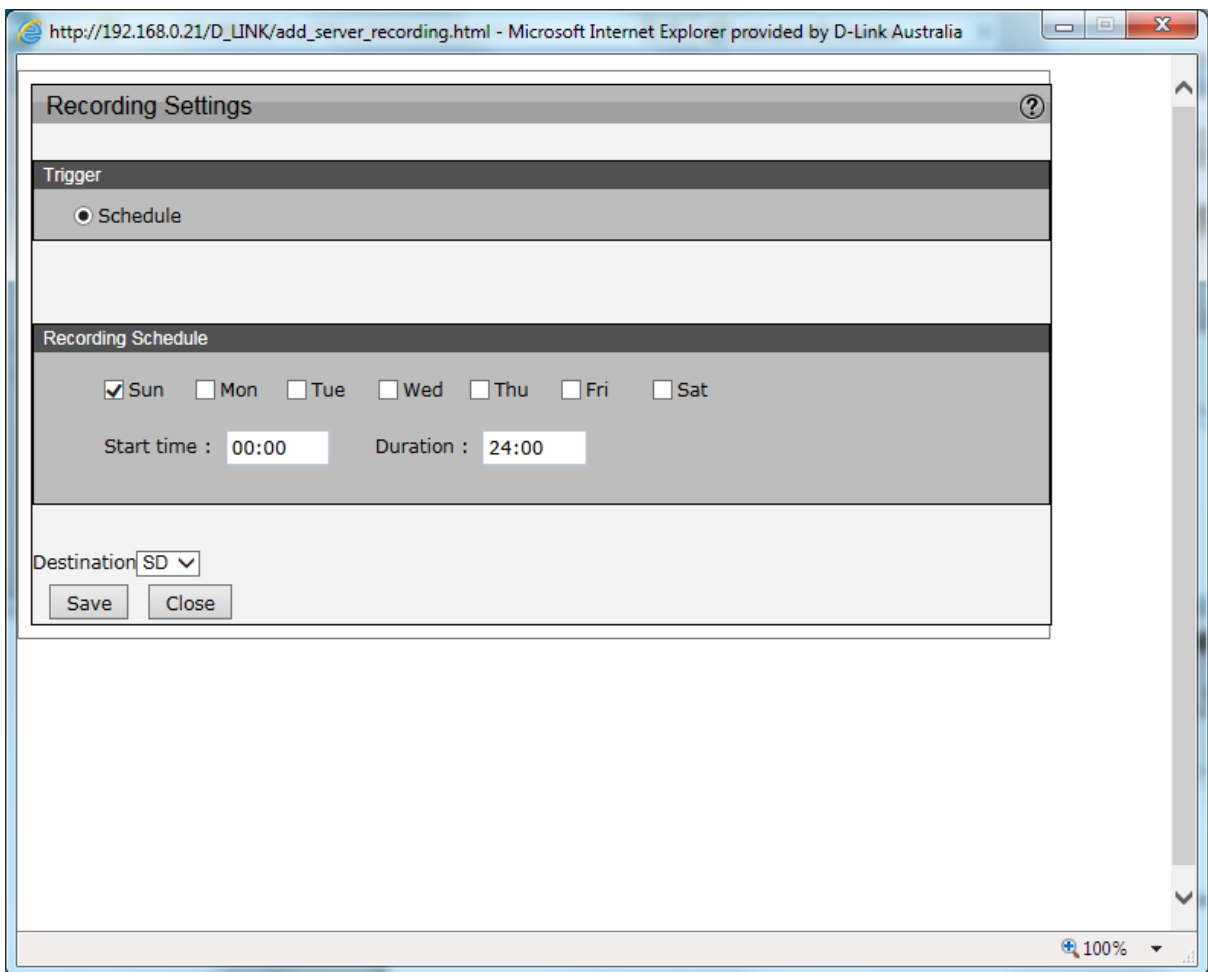
http://192.168.0.21/D_LINK/systemoverview.html network HD Camera 192.168.0.21

System Overview

- Audio and Video
- Network
- Event Management
- Recording
 - Recording Settings
 - Local Storage
- PTZ Control
- System

Recording Settings

Status	Sun	Mon	Tue	Wed	Thu	Fri	Sat	Time	Destination	
on	v							00:00-24:00	SD	<input type="button" value="Edit"/> <input type="button" value="Delete"/>



http://192.168.0.21/D_LINK/systemoverview.html network HD Camera 192.168.0.21

System Overview

- Audio and Video
- Network
- Event Management
- Recording
- PTZ Control
 - Preset
 - Cruise
 - Auto Pan
 - Sequence
 - Home
 - Tilt Range
 - Miscellaneous
- System

Preset Point

Preset setting

PrePage NextPage

Num(1~10): 2

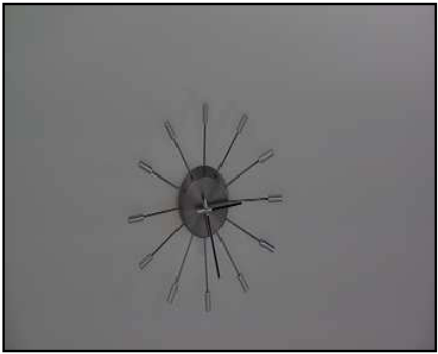
Name: Door

Set Delete

Preset go

Presetlist

- 1-Centre
- 2-Door
- 3-nonsetting
- 4-nonsetting
- 5-nonsetting
- 6-nonsetting
- 7-nonsetting
- 8-nonsetting
- 9-nonsetting
- 10-nonsetting



Zoom Wide Tele

Focus Auto Manual Near Far

http://192.168.0.21/D_LINK/systemoverview.html network HD Camera 192.168.0.21

System Overview

- Audio and Video
- Network
- Event Management
- Recording
- PTZ Control
 - Preset
 - Cruise
 - Auto Pan
 - Sequence
 - Home
 - Tilt Range
 - Miscellaneous
- System

Cruise Line

Cruise setting

Cruise path: 1


Record start: Set

Record end: Set

Cruise run

Cruise path: 1

Run



Zoom Wide Tele

Focus Auto Manual Near Far

network HD Camera

http://192.168.0.21/D_LINK/systemoverview.html

192.168.0.21

System Overview

- Audio and Video
- Network
- Event Management
- Recording
- PTZ Control
 - Preset
 - Cruise
 - Auto Pan
 - Sequence
 - Home
 - Tilt Range
 - Miscellaneous
- System

Auto Pan

Auto pan setting

Auto pan path: 1

Speed: 1

Direction: Left

Start point: Set

End point: Set

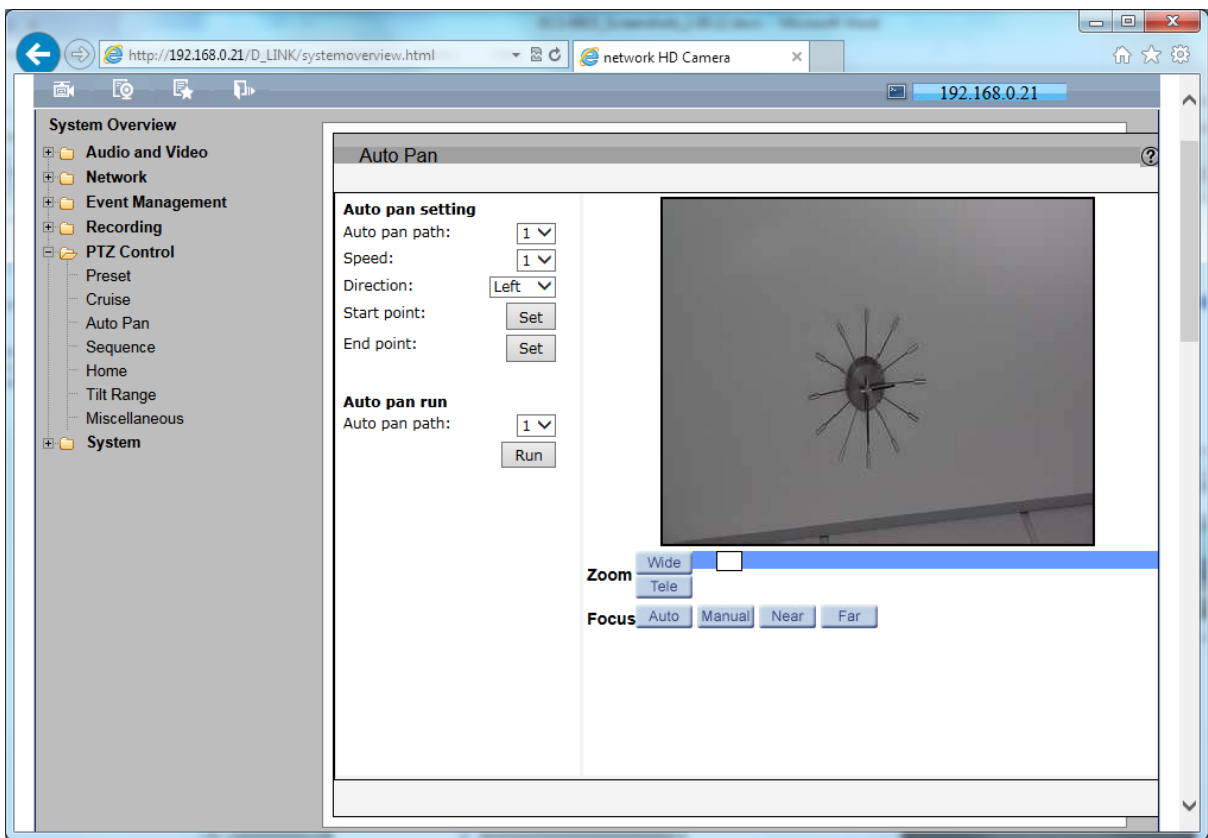
Auto pan run

Auto pan path: 1

Run

Zoom: Wide, Tele

Focus: Auto, Manual, Near, Far



network HD Camera

http://192.168.0.21/D_LINK/systemoverview.html

192.168.0.21

System Overview

- Audio and Video
- Network
- Event Management
- Recording
- PTZ Control
 - Preset
 - Cruise
 - Auto Pan
 - Sequence
 - Home
 - Tilt Range
 - Miscellaneous
- System

Sequence Line

Sequence setting

Edit

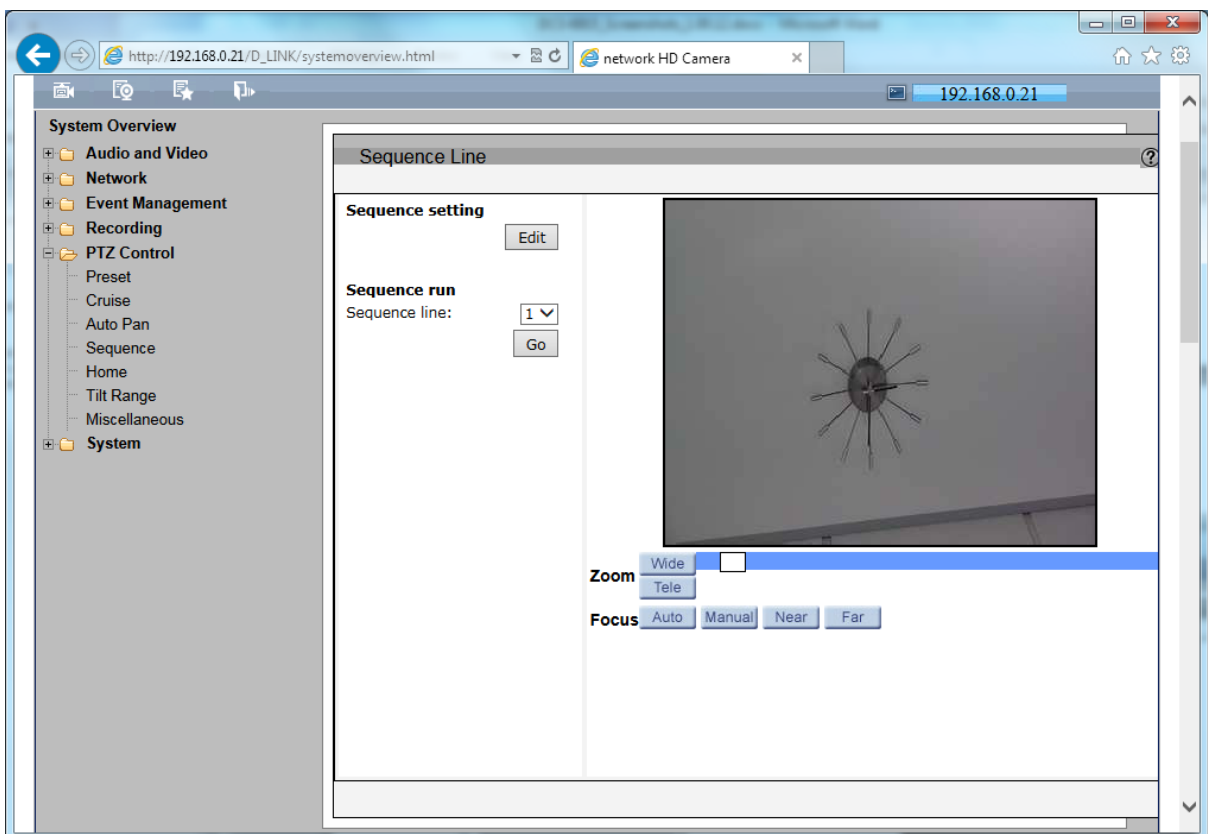
Sequence run

Sequence line: 1

Go

Zoom: Wide, Tele

Focus: Auto, Manual, Near, Far



http://192.168.0.21/D_LINK/systemoverview.html network HD Camera 192.168.0.21

System Overview

- Audio and Video
- Network
- Event Management
- Recording
- PTZ Control
 - Preset
 - Cruise
 - Auto Pan
 - Sequence
 - Home
 - Tilt Range
 - Miscellaneous
- System

Sequence Set

Sequence line: 1

Preset	Name	Dwell time [0..127]	Speed [0..14]
1.	-- no setting --	<input type="text"/>	<input type="text"/>
2.	-- no setting --	<input type="text"/>	<input type="text"/>
3.	-- no setting --	<input type="text"/>	<input type="text"/>
4.	-- no setting --	<input type="text"/>	<input type="text"/>
5.	-- no setting --	<input type="text"/>	<input type="text"/>
6.	-- no setting --	<input type="text"/>	<input type="text"/>
7.	-- no setting --	<input type="text"/>	<input type="text"/>
8.	-- no setting --	<input type="text"/>	<input type="text"/>
9.	-- no setting --	<input type="text"/>	<input type="text"/>
10.	-- no setting --	<input type="text"/>	<input type="text"/>
11.	-- no setting --	<input type="text"/>	<input type="text"/>
12.	-- no setting --	<input type="text"/>	<input type="text"/>
13.	-- no setting --	<input type="text"/>	<input type="text"/>
14.	-- no setting --	<input type="text"/>	<input type="text"/>
15.	-- no setting --	<input type="text"/>	<input type="text"/>

http://192.168.0.21/D_LINK/systemoverview.html network HD Camera 192.168.0.21

System Overview

- Audio and Video
- Network
- Event Management
- Recording
- PTZ Control
 - Preset
 - Cruise
 - Auto Pan
 - Sequence
 - Home
 - Tilt Range
 - Miscellaneous
- System

Home Function

Home setting

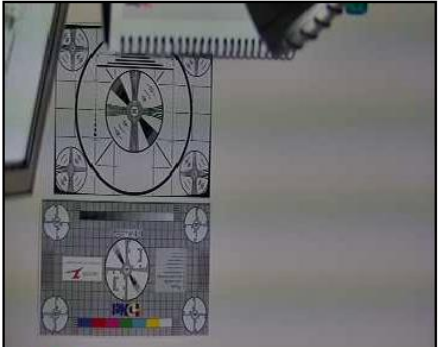
Switch:

Time: [1..128Min]

Type:

Line:

Home position setting



Zoom

Focus

http://192.168.0.21/D_LINK/systemoverview.html network HD Camera 192.168.0.21

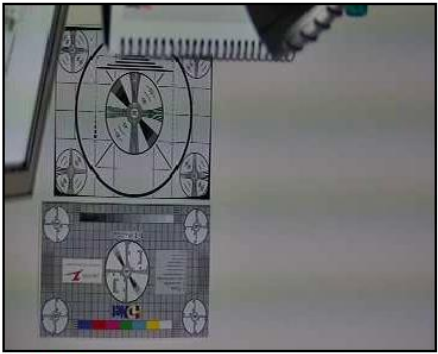
System Overview

- Audio and Video
- Network
- Event Management
- Recording
- PTZ Control
 - Preset
 - Cruise
 - Auto Pan
 - Sequence
 - Home
 - Tilt Range
 - Miscellaneous
- System

Tilt Angle

Angle Setting

Min: [-10..10]
Max: [80..100]



Zoom

Focus

http://192.168.0.21/D_LINK/systemoverview.html network HD Camera 192.168.0.21

System Overview

- Audio and Video
- Network
- Event Management
- Recording
- PTZ Control
 - Preset
 - Cruise
 - Auto Pan
 - Sequence
 - Home
 - Tilt Range
 - Miscellaneous
- System

Miscellaneous

Advanced Settings

Digital zoom	<input type="button" value="Off"/> ▾	<input type="button" value="Set"/>
Speed by zoom	<input type="button" value="Off"/> ▾	<input type="button" value="Set"/>
Auto Calibration	<input type="button" value="Off"/> ▾	<input type="button" value="Set"/>
OSD	<input type="button" value="Off"/> ▾	<input type="button" value="Set"/>
Set Pan Zero		<input type="button" value="Set"/>

http://192.168.0.21/D_LINK/systemoverview.html network HD Camera

System Overview

- Audio and Video
- Network
- Event Management
- Recording
- PTZ Control
- System
 - User Settings
 - Device Settings
 - Time and Date
 - Maintenance
 - Parameter List
 - Logs

User Settings

Admin Password Setup

Password:

Confirm password:

Add User Account

User name:

Password:

Privilege: Normal user
 Guest

Manage User

User name:

http://192.168.0.21/D_LINK/systemoverview.html network HD Camera

System Overview

- Audio and Video
- Network
- Event Management
- Recording
- PTZ Control
- System
 - User Settings
 - Device Settings
 - Time and Date
 - Maintenance
 - Parameter List
 - Logs

Device Settings

Camera Name

Camera Name:

http://192.168.0.21/D_LINK/systemoverview.html network HD Camera

System Overview

- Audio and Video
- Network
- Event Management
- Recording
- PTZ Control
- System
 - User Settings
 - Device Settings
 - Time and Date
 - Maintenance
 - Parameter List
 - Logs

Time and Date

Time Configuration

Host Name : DCS-6915

Time zone : GMT+10:00 Guam, Russia, Australia

Enable daylight saving time

time offset: 01:00:00

Start date: Jan 1st Sun Start time: 00:00:00

End date: Jan 1st Sun End time: 00:00:00

Automatic Time Configuration

Sync with NTP server

NTP server: 0.0.0.0 << select_ntp_server

Update interval: Every hour

Set the Date and Time Manually

Sync with computer time

PC date: 2013/04/10 [yyyy/mm/dd]

PC time: 11:23:06 [hh:mm:ss]

Manual

Date: 2010/04/01 [yyyy/mm/dd]

Time: 00:00:00 [hh:mm:ss]

Save

http://192.168.0.21/D_LINK/systemoverview.html network HD Camera 192.168.0.21

System Overview

- Audio and Video
- Network
- Event Management
- Recording
- PTZ Control
- System
 - User Settings
 - Device Settings
 - Time and Date
 - Maintenance
 - Parameter List
 - Logs

Maintenance

Reboot

Reboot the device Reboot

Restore to Default

Restore all settings to factory default. Default

Export Files

Export setting backup file Export

Upload Files

Upload setting backup file Browse... Upload

Firmware Upgrade

File path Browse... Upgrade

The screenshot shows the D-Link DCS-6915 web interface. The browser address bar displays `http://192.168.0.21/D_LINK/systemoverview.html`. The page title is "DCS-6915" and the "SECURICAM" logo is visible in the top right. A navigation menu on the left includes "System Overview", "Audio and Video", "Network", "Event Management", "Recording", "PTZ Control", and "System". Under "System", the "Parameter List" option is selected. The main content area shows a "Parameter list" window with the following configuration details:

```
Mega Pixel Camera Initial Configuration File
-----
[Camera setting]
-----
exposure mode = <piris>
max shutter gain = <>
manual shutter speed = <>
manual AGC gain = <>
manual iris value = <>
white balance mode = <auto>
white balance rgain = <57>
white balance bgain = <54>
backlight = <off>
sharpness value = <6>
```

The screenshot shows the same D-Link DCS-6915 web interface, but with the "Logs" page selected in the navigation menu. The "Current Log" window displays the following system logs:

```
[Thu Apr 1 00:05:00 2010] --Network interface initialized start
[Thu Apr 1 00:05:59 2010] --Network interface initialized end
[Thu Apr 1 00:05:59 2010] --Host IP = 192.168.0.21
[Thu Apr 1 00:05:59 2010] --Subnet Mask = 255.255.255.0
[Thu Apr 1 00:05:59 2010] --Gateway = 192.168.0.253
[Thu Apr 1 00:05:59 2010] --MAC address = 28:10:7B:00:04:D8
[Thu Apr 1 00:06:48 2010] --admin@::ffff:192.168.0.7 GET / HTTP/1.1
[Thu Apr 1 00:06:50 2010] --admin@::ffff:192.168.0.7 GET /cgi-bin/setlogout.c
[Thu Apr 1 00:06:52 2010] --admin@::ffff:192.168.0.7 GET /cgi-bin/ret.cgi HT
[Thu Apr 1 00:06:52 2010] --admin@::ffff:192.168.0.7 GET /cgi-bin/ret.cgi HT
[Thu Apr 1 00:06:54 2010] --admin@::ffff:192.168.0.7 GET /cgi-bin/loadcamer
[Thu Apr 1 00:07:38 2010] --admin@::ffff:192.168.0.7 GET /cgi-bin/showdate.
[Thu Apr 1 00:07:43 2010] --admin@::ffff:192.168.0.7 GET /cgi-bin/setlogout.c
[Thu Apr 1 00:07:44 2010] --admin@::ffff:192.168.0.7 GET /cgi-bin/ret.cgi HT
[Thu Apr 1 00:12:58 2010] --admin@::ffff:192.168.0.7 GET / HTTP/1.1
[Thu Apr 1 00:13:00 2010] --admin@::ffff:192.168.0.7 GET /cgi-bin/setlogout.c
[Thu Apr 1 00:13:01 2010] --admin@::ffff:192.168.0.7 GET /cgi-bin/ret.cgi HT
[Thu Apr 1 00:13:03 2010] --admin@::ffff:192.168.0.7 GET /cgi-bin/ret.cgi HT
[Thu Apr 1 00:13:09 2010] --admin@::ffff:192.168.0.7 GET /cgi-bin/setlogout.c
[Thu Apr 1 00:13:10 2010] --admin@::ffff:192.168.0.7 GET /cgi-bin/ret.cgi HT
[Thu Apr 1 00:13:33 2010] --admin@::ffff:192.168.0.7 GET / HTTP/1.1
[Thu Apr 1 00:13:35 2010] --admin@::ffff:192.168.0.7 GET /cgi-bin/setlogout.c
[Thu Apr 1 00:13:38 2010] --admin@::ffff:192.168.0.7 GET /cgi-bin/ret.cgi HT
[Thu Apr 1 00:13:38 2010] --admin@::ffff:192.168.0.7 GET /cgi-bin/ret.cgi HT
```


Mega Pixel Camera Initial Configuration File

=====

[Camera setting]

=====

exposure mode = <piris>
max shutter gain = <>
manual shutter speed = <>
manual AGC gain = <>
manual iris value = <>
white balance mode = <auto>
white balance rgain = <57>
white balance bgain = <54>
backlight = <off>
sharpness value = <6>
flip = <off>
exposure compensation = <8>
digital zoom = <off>
speed by zoom = <off>
2dnr value = <off>
auto calibration = <off>
wdr function = <on>

=====

[Mask]

=====

Mask switch = <0>
Enable Mask1 = <0>
Enable Mask2 = <0>
Enable Mask3 = <0>
Enable Mask4 = <0>
Enable Mask5 = <0>
Enable Mask6 = <0>
Enable Mask7 = <0>
Enable Mask8 = <0>
Enable Mask9 = <0>
Enable Mask10 = <0>
Enable Mask11 = <0>
Enable Mask12 = <0>
Enable Mask13 = <0>
Enable Mask14 = <0>
Enable Mask15 = <0>
Enable Mask16 = <0>
Mask color = <black>
Mask type = <solid>

Mask area0 = <(10,10)(5,8)>
Mask area1 = <(25,10)(8,5)>
Mask area2 = <(40,10)(8,5)>
Mask area3 = <(55,10)(8,5)>
Mask area4 = <(70,10)(8,5)>
Mask area5 = <(10,10)(8,5)>
Mask area6 = <(25,10)(8,5)>
Mask area7 = <(40,10)(20,30)>
Mask area8 = <(55,10)(8,5)>
Mask area9 = <(70,10)(8,5)>
Mask area10 = <(10,10)(8,5)>
Mask area11 = <(25,10)(8,5)>
Mask area12 = <(40,10)(8,5)>
Mask area13 = <(55,10)(8,5)>
Mask area14 = <(70,10)(8,5)>
Mask area15 = <(10,10)(8,5)>

=====

[ROI]

=====

enable MJPEG ROI setting = <0>
MJPEG ROI position = <0_0_0_0>
enable H.264-2 ROI setting = <0>
H.264-2 ROI position = <0_0_0_0>
enable H.264-3 ROI setting = <0>
H.264-3 ROI position = <0_0_0_0>
enable H.264-4 ROI setting = <0>
H.264-4 ROI position = <0_0_0_0>

=====

[System]

=====

system host name = <DCS-6915>
time zone = <GMT+10>
enable daylight saving = <0>
daylight saving offset = <01:00:00>
daylight saving start month = <0>
daylight saving start day type = <date>
daylight saving start day = <1>
daylight saving start time = <00:00:00>
daylight saving end month = <0>
daylight saving end day type = <date>
daylight saving end day = <1>
daylight saving end time = <00:00:00>
time display method = <Sync PC>
date format = <YYYY-MM-DD>

```
setup date = <2010/04/01>
setup time = <00:00:00>
ntp server = <0.0.0.0>
ntp update interval = <one hour>
=====
[Network]
=====
get IP method = <fix>
reconnect IP Address = <192.168.0.21>
reconnect IP Subnet Mask = <255.255.255.0>
reconnect IP Default gateway = <192.168.0.253>
reconnect IP Primary DNS = <4.2.2.2>
reconnect IP Secondary DNS = <0.0.0.0>
reconnect IP port = <80>
PPPoE username = < >
PPPoE password = <****>
RTSP Port = <554>
MJPEG over HTTP port = <8008>
HTTPS Port = <443>
UPnP enable = <1>
UPnP port forwarding = <0>
UPnP friendly name = <DCS-6915>
QoS Live Video DSCP = <0>
QoS Live Audio DSCP = <0>
QoS Event DSCP = <0>
QoS Management DSCP = <0>
IP Filter Enabled = <no>
IP Filter Input Policy = <deny>
IP Filter Input Accept Addresses = < >
IPv6 enable = <0>
802dot1x Enabled = <no>
802dot1x EAPTLS Identity = <admin>
802dot1x EAPTLS PrivateKeyPassword = <12345>
Streaming Authentication Type = < >
=====
[Video]
=====
video resolution = <cif,1080p,cif,cif,disable>
video rotate type = <normal>
video overlay date = <0>
video overlay time = <0>
video overlay text = <0>
video text content = < >
H264 GOV length = <50>
```

H264-2 GOV length = <50>

H264-3 GOV length = <25>

H264-4 GOV length = <25>

=====

[DDNS]

=====

enable DDNS = <0>

DDNS provider = <0>

DDNS host name = < >

DDNS account = < >

DDNS password = < >

=====

[Mail]

=====

Smtp server 1 = <mailserver.company.com.au>

Smtp server 1 port = <25 >

SMTP account name 1 = <camera@company.com.au>

SMTP password 1 = <****>

Recipient email address 1 = <security@company.com.au>

Smtp server 1 SSL = <no>

Smtp server 2 = < >

Smtp server 2 port = <25>

SMTP account name 2 = < >

SMTP password 2 = <****>

Recipient email address 2 = < >

Smtp server 2 SSL = <no>

Sender email address = <camera@company.com.au>

=====

[FTP]

=====

Built-in FTP port = <21>

FTP 1 address = <ftp.company.com.au>

FTP 1 port = <21>

FTP 1 username = <camera@company.com.au>

FTP 1 password = <****>

FTP 1 folder = <camera>

FTP 1 passive mode = <0>

FTP 2 address = < >

FTP 2 port = <21>

FTP 2 username = < >

FTP 2 password = <****>

FTP 2 folder = < >

FTP 2 passive mode = <0>

=====

[HTTP]

=====

HTTP 1 address = < >

HTTP 1 username = < >

HTTP 1 password = <****>

HTTP 2 address = < >

HTTP 2 username = < >

HTTP 2 password = <****>

=====

[Audio]

=====

Audio mode = <0>

Audio storage recording = <0>

Audio input gain = <3>

Audio output gain = <3>

Audio bit rate = <ulaw>

=====

[Application]

=====

Alarm 1 switch = <0>

Alarm 1 schedule = < >

Alarm 1 type = <1>

Alarm 1 function = <0>

Alarm 1 sd pre time = <1>

Alarm 1 sd continue type = <0>

Alarm 1 sd continue period = <1>

Alarm 1 ftp address = <F0>

Alarm 1 ftp pre frame = <5>

Alarm 1 ftp post frame = <5>

Alarm 1 ftp continue function = <0>

Alarm 1 ftp continue type = <0>

Alarm 1 ftp continue period = <1>

Alarm 1 ftp image frequency = <0>

Alarm 1 email address = <E0>

Alarm 1 email pre frame = <5>

Alarm 1 email post frame = <5>

Alarm 1 email continue function = <0>

Alarm 1 email continue type = <0>

Alarm 1 email continue period = <1>

Alarm 1 email image frequency = <0>

Alarm 1 dome function = < >

Alarm 1 dome functionline = < >

Alarm 1 dome functiondwelltime = < >

Alarm 1 http server = <H0>

Alarm 1 http image frequency = < >

Alarm 1 image file name = <image.jpg>

Alarm 1 image suffix type = <0>

Alarm 1 image suffix max number = <0>

Alarm 2 switch = <0>

Alarm 2 schedule = < >

Alarm 2 type = <1>

Alarm 2 function = <0>

Alarm 2 sd pre time = <1>

Alarm 2 sd continue type = <1>

Alarm 2 sd continue period = <1>

Alarm 2 ftp address = <F0>

Alarm 2 ftp pre frame = <5>

Alarm 2 ftp post frame = <5>

Alarm 2 ftp continue function = <0>

Alarm 2 ftp continue type = <1>

Alarm 2 ftp continue period = <0>

Alarm 2 ftp image frequency = <0>

Alarm 2 email address = <E0>

Alarm 2 email pre frame = <5>

Alarm 2 email post frame = <5>

Alarm 2 email continue function = <0>

Alarm 2 email continue type = <1>

Alarm 2 email continue period = <0>

Alarm 2 email image frequency = <0>

Alarm 2 dome function = < >

Alarm 2 dome functionline = < >

Alarm 2 dome functiondwelltime = < >

Alarm 2 http server = <H0>

Alarm 2 http image frequency = < >

Alarm 2 image file name = <image.jpg>

Alarm 2 image suffix type = <0>

Alarm 2 image suffix max number = <0>

Alarm 3 switch = <0>

Alarm 3 schedule = < >

Alarm 3 type = <1>

Alarm 3 function = <0>

Alarm 3 sd pre time = <1>

Alarm 3 sd continue type = <1>

Alarm 3 sd continue period = <1>

Alarm 3 ftp address = <F0>

Alarm 3 ftp pre frame = <5>

Alarm 3 ftp post frame = <5>

Alarm 3 ftp continue function = <0>

Alarm 3 ftp continue type = <1>
Alarm 3 ftp continue period = <0>
Alarm 3 ftp image frequency = <0>
Alarm 3 email address = <E0>
Alarm 3 email pre frame = <5>
Alarm 3 email post frame = <5>
Alarm 3 email continue function = <0>
Alarm 3 email continue type = <1>
Alarm 3 email continue period = <0>
Alarm 3 email image frequency = <0>
Alarm 3 dome function = < >
Alarm 3 dome functionline = < >
Alarm 3 dome functiondwelltime = < >
Alarm 3 http server = <H0>
Alarm 3 http image frequency = < >
Alarm 3 image file name = <image.jpg>
Alarm 3 image suffix type = <0>
Alarm 3 image suffix max number = <0>
Alarm 4 switch = <0>
Alarm 4 schedule = < >
Alarm 4 type = <1>
Alarm 4 function = <0>
Alarm 4 sd pre time = <1>
Alarm 4 sd continue type = <1>
Alarm 4 sd continue period = <1>
Alarm 4 ftp address = <F0>
Alarm 4 ftp pre frame = <5>
Alarm 4 ftp post frame = <5>
Alarm 4 ftp continue function = <0>
Alarm 4 ftp continue type = <1>
Alarm 4 ftp continue period = <0>
Alarm 4 ftp image frequency = <0>
Alarm 4 email address = <E0>
Alarm 4 email pre frame = <5>
Alarm 4 email post frame = <5>
Alarm 4 email continue function = <0>
Alarm 4 email continue type = <1>
Alarm 4 email continue period = <0>
Alarm 4 email image frequency = <0>
Alarm 4 dome function = < >
Alarm 4 dome functionline = < >
Alarm 4 dome functiondwelltime = < >
Alarm 4 http server = <H0>
Alarm 4 http image frequency = < >

Alarm 4 image file name = <image.jpg>

Alarm 4 image suffix type = <0>

Alarm 4 image suffix max number = <0>

=====
[Compression]

=====
MJPEG Q factor = <60>

H264-1 bit rate = <8192kbps>

H264-2 bit rate = <1024kbps>

H264-3 bit rate = <1024kbps>

H264-4 bit rate = <1024kbps>

Compression rate display = <1>

H264 CBR mode = <1>

H264-2 CBR mode = <1>

H264-3 CBR mode = <1>

H264-4 CBR mode = <1>

=====
[Video protocol]

=====
Video transmission protocol = <0>

Multicast ip address = <0.0.0.0>

Multicast H264 video port = <0>

Multicast H264-2 video port = <0>

Multicast H264-3 video port = <0>

Multicast H264-4 video port = <0>

Multicast MJPEG video port = <0>

Multicast Audio port = <0>

Multicast TTL = <1>

=====
[Video frame rate]

=====
MJPEG frame rate = <25>

H.264-1 frame rate = <25>

H.264-2 frame rate = <25>

H.264-3 frame rate = <25>

H.264-4 frame rate = <25>

=====
[Motion Detection]

=====
Active motion detection = <2>

Active motion detection schedule = <S4>

Sampling pixel interval = <1>

Detection level = <10>

Sensitivity level = <80>

Time interval = <10>
Enable window0 = <1>
Enable window1 = <0>
Enable window2 = <0>
Enable window3 = <0>
Enable window4 = <0>
Enable window5 = <0>
Enable window6 = <0>
Enable window7 = <0>
Enable window8 = <0>
Enable window9 = <0>
Motion window0 = <(5,6)(8,9)>
Motion window1 = <(10,6)(13,9)>
Motion window2 = <(15,6)(18,9)>
Motion window3 = <(20,6)(23,9)>
Motion window4 = <(25,6)(28,9)>
Motion window5 = <(5,11)(8,14)>
Motion window6 = <(10,11)(13,14)>
Motion window7 = <(15,11)(18,14)>
Motion window8 = <(20,11)(23,14)>
Motion window9 = <(25,11)(28,14)>
Motion alarm output = <0>
Motion function = <0>
Motion sd pre time = <1>
Motion sd continue type = <0>
Motion sd continue period = <1>
Motion ftp address = <F0>
Motion ftp pre frame = <5>
Motion ftp post frame = <5>
Motion ftp continue function = <0>
Motion ftp continue type = <0>
Motion ftp continue period = <1>
Motion ftp image frequency = <0>
Motion email address = <E0>
Motion email pre frame = <5>
Motion email post frame = <5>
Motion email continue function = <0>
Motion email continue type = <0>
Motion email continue period = <1>
Motion email image frequency = <0>
Motion http server = <H0>
Motion http custom parameters = < >
Motion image file name = < >
Motion image suffix type = <0>

Motion image suffix max number = <0>

=====

[Motion Detection 2]

=====

Active motion detection = <0>

Active motion detection schedule= <no>

Sampling pixel interval = <1>

Detection level = <10>

Sensitivity level = <80>

Time interval = <10>

Enable window0 = <1>

Enable window1 = <0>

Enable window2 = <0>

Enable window3 = <0>

Enable window4 = <0>

Enable window5 = <0>

Enable window6 = <0>

Enable window7 = <0>

Enable window8 = <0>

Enable window9 = <0>

Motion2 window0 = <(5,6)(8,9)>

Motion2 window1 = <(10,6)(13,9)>

Motion2 window2 = <(15,6)(18,9)>

Motion2 window3 = <(20,6)(23,9)>

Motion2 window4 = <(25,6)(28,9)>

Motion2 window5 = <(5,11)(8,14)>

Motion2 window6 = <(10,11)(13,14)>

Motion2 window7 = <(15,11)(18,14)>

Motion2 window8 = <(20,11)(23,14)>

Motion2 window9 = <(25,11)(28,14)>

Motion2 alarm output = <0>

Motion2 function = <0>

Motion2 sd pre time = <1>

Motion2 sd continue type = <0>

Motion2 sd continue period = <1>

Motion2 ftp address = <F0>

Motion2 ftp pre frame = <5>

Motion2 ftp post frame = <5>

Motion2 ftp continue function = <0>

Motion2 ftp continue type = <0>

Motion2 ftp continue period = <1>

Motion2 ftp image frequency = <0>

Motion2 email address = <E0>

Motion2 email pre frame = <5>

Motion2 email post frame = <5>
Motion2 email continue function = <0>
Motion2 email continue type = <0>
Motion2 email continue period = <1>
Motion2 email image frequency = <0>
Motion2 http server = <H0>
Motion2 http custom parameters = < >
Motion2 image file name = <image.jpg>
Motion2 image suffix type = <0>
Motion2 image suffix max number = <0>

=====

[Motion Detection 3]

=====

Active motion detection = <0>
Active motion detection schedule = < >
Sampling pixel interval = <1>
Detection level = <10>
Sensitivity level = <80>
Time interval = <10>
Enable window0 = <1>
Enable window1 = <0>
Enable window2 = <0>
Enable window3 = <0>
Enable window4 = <0>
Enable window5 = <0>
Enable window6 = <0>
Enable window7 = <0>
Enable window8 = <0>
Enable window9 = <0>
Motion3 window0 = <(5,6)(8,9)>
Motion3 window1 = <(10,6)(13,9)>
Motion3 window2 = <(15,6)(18,9)>
Motion3 window3 = <(20,6)(23,9)>
Motion3 window4 = <(25,6)(28,9)>
Motion3 window5 = <(5,11)(8,14)>
Motion3 window6 = <(10,11)(13,14)>
Motion3 window7 = <(15,11)(18,14)>
Motion3 window8 = <(20,11)(23,14)>
Motion3 window9 = <(25,11)(28,14)>
Motion3 alarm output = <0>
Motion3 function = <0>
Motion3 sd pre time = <1>
Motion3 sd continue type = <0>
Motion3 sd continue period = <1>

Motion3 ftp address = <F0>
Motion3 ftp pre frame = <5>
Motion3 ftp post frame = <5>
Motion3 ftp continue function = <0>
Motion3 ftp continue type = <0>
Motion3 ftp continue period = <1>
Motion3 ftp image frequency = <0>
Motion3 email address = <E0>
Motion3 email pre frame = <5>
Motion3 email post frame = <5>
Motion3 email continue function = <0>
Motion3 email continue type = <0>
Motion3 email continue period = <1>
Motion3 email image frequency = <0>
Motion3 http server = <H0>
Motion3 http custom parameters = < >
Motion3 image file name = <image.jpg>
Motion3 image suffix type = <0>
Motion3 image suffix max number = <0>

=====
[Motion Detection 4]

=====
Active motion detection = <0>
Active motion detection schedule = < >
Sampling pixel interval = <1>
Detection level = <10>
Sensitivity level = <80>
Time interval = <10>
Enable window0 = <1>
Enable window1 = <0>
Enable window2 = <0>
Enable window3 = <0>
Enable window4 = <0>
Enable window5 = <0>
Enable window6 = <0>
Enable window7 = <0>
Enable window8 = <0>
Enable window9 = <0>
Motion4 window0 = <(5,6)(8,9)>
Motion4 window1 = <(10,6)(13,9)>
Motion4 window2 = <(15,6)(18,9)>
Motion4 window3 = <(20,6)(23,9)>
Motion4 window4 = <(25,6)(28,9)>
Motion4 window5 = <(5,11)(8,14)>

Motion4 window6 = <(10,11)(13,14)>

Motion4 window7 = <(15,11)(18,14)>

Motion4 window8 = <(20,11)(23,14)>

Motion4 window9 = <(25,11)(28,14)>

Motion4 alarm output = <0>

Motion4 function = <0>

Motion4 sd pre time = <1>

Motion4 sd continue type = <0>

Motion4 sd continue period = <1>

Motion4 ftp address = <F0>

Motion4 ftp pre frame = <5>

Motion4 ftp post frame = <5>

Motion4 ftp continue function = <0>

Motion4 ftp continue type = <0>

Motion4 ftp continue period = <1>

Motion4 ftp image frequency = <0>

Motion4 email address = <E0>

Motion4 email pre frame = <5>

Motion4 email post frame = <5>

Motion4 email continue function = <0>

Motion4 email continue type = <0>

Motion4 email continue period = <1>

Motion4 email image frequency = <0>

Motion4 http server = <H0>

Motion4 http custom parameters = < >

Motion4 image file name = <image.jpg>

Motion4 image suffix type = <0>

Motion4 image suffix max number = <0>

=====

[Tampering]

=====

Active tampering alarm = <0>

Active tampering alarm schedule = < >

Tampering duration = <20>

Tampering alarm output = <0>

Tampering function = <0>

Tampering sd pre time = <1>

Tampering sd continue type = <0>

Tampering sd continue period = <1>

Tampering ftp address = <F0>

Tampering ftp pre frame = <5>

Tampering ftp post frame = <5>

Tampering ftp continue function = <0>

Tampering ftp continue type = <0>

Tampering ftp continue period = <1>
Tampering ftp image frequency = <0>
Tampering email address = <E0>
Tampering email pre frame = <5>
Tampering email post frame = <5>
Tampering email continue function = <0>
Tampering email continue type = <0>
Tampering email continue period = <1>
Tampering email image frequency = <0>
Tampering http server = <H0>
Tampering http custom parameters = < >
Tampering image file name = <image.jpg>
Tampering image suffix type = <0>
Tampering image suffix max number = <0>

=====

[Storage Management]

=====

Enable automatic disk cleanup = <0>
Cleanup duration = <1>
Cleanup duration unit = <0>
Cleanup percentage level = <85>

=====

[Recording]

=====

Recording type = <2>
Recording weekdays 1 = <1000000>
Recording starttime 1 = <00:00>
Recording duration 1 = <24:00>
Recording weekdays 2 = <0000000>
Recording starttime 2 = <00:00>
Recording duration 2 = <00:00>
Recording weekdays 3 = <0000000>
Recording starttime 3 = <00:00>
Recording duration 3 = <00:00>
Recording weekdays 4 = <0000000>
Recording starttime 4 = <00:00>
Recording duration 4 = <00:00>
Recording weekdays 5 = <0000000>
Recording starttime 5 = <00:00>
Recording duration 5 = <00:00>
Recording weekdays 6 = <0000000>
Recording starttime 6 = <00:00>
Recording duration 6 = <00:00>
Recording weekdays 7 = <0000000>

Recording starttime 7 = <00:00>
Recording duration 7 = <00:00>
Recording weekdays 8 = <0000000>
Recording starttime 8 = <00:00>
Recording duration 8 = <00:00>
Recording weekdays 9 = <0000000>
Recording starttime 9 = <00:00>
Recording duration 9 = <00:00>
Recording weekdays 10 = <0000000>
Recording starttime 10 = <00:00>
Recording duration 10 = <00:00>

=====

[Schedule]

=====

Schedule weekdays 1 = <0000000>
Schedule starttime 1 = <00:00>
Schedule duration 1 = <24:00>
Schedule weekdays 2 = <0000000>
Schedule starttime 2 = <00:00>
Schedule duration 2 = <24:00>
Schedule weekdays 3 = <0000000>
Schedule starttime 3 = <00:00>
Schedule duration 3 = <24:00>
Schedule weekdays 4 = <0000000>
Schedule starttime 4 = <00:00>
Schedule duration 4 = <24:00>
Schedule weekdays 5 = <1111111>
Schedule starttime 5 = <00:00>
Schedule duration 5 = <24:00>
Schedule weekdays 6 = <0000000>
Schedule starttime 6 = <00:00>
Schedule duration 6 = <24:00>
Schedule weekdays 7 = <0000000>
Schedule starttime 7 = <00:00>
Schedule duration 7 = <24:00>
Schedule weekdays 8 = <0000000>
Schedule starttime 8 = <00:00>
Schedule duration 8 = <24:00>
Schedule weekdays 9 = <0000000>
Schedule starttime 9 = <00:00>
Schedule duration 9 = <24:00>
Schedule weekdays 10 = <0000000>
Schedule starttime 10 = <00:00>
Schedule duration 10 = <24:00>

=====

[Network failure detection]

=====

Active network failure = <0>

Active network failure schedule = < >

Network failure alarm output = <0>

Network failure function = <0>

Network detection address = <0.0.0.0>

Network detection period = <1>

Network failure sd pre time = <1>

Network failure sd continue type = <1>

Network failure sd continue period = <1>

=====

[IR Setting]

=====

IR setting mode = <auto>

=====

[SNMP]

=====

SNMP v1 enable = <0>

SNMP v2c enable = <0>

SNMP Read Community = <public>

SNMP Write Community = <private>

SNMP Trap for v1/v2 enable = <0>

SNMP Trap address = < >

SNMP Trap community = <public>

SNMP Trap 1 enable = <0>