

DES-3528 A1 fw 1.01.B030

The screenshot shows the web management interface for a D-Link DES-3528 Fast Ethernet Switch. The browser address bar shows `http://10.90.90.90/www/main.html`. The interface includes a navigation menu on the left with options like 'Save Configuration ID 1', 'ACL', and 'Monitoring'. The main content area is titled 'Device Information' and contains the following data:

Device Information			
Device Type	DES-3528 Fast Ethernet Switch	MAC Address	00-1E-58-50-1C-F0
System Name		IP Address	10.90.90.90 (Static)
System Location		Mask	255.0.0.0
System Contact		Gateway	0.0.0.0
Boot PROM Version	Build 1.00.B006	Management VLAN	default
Firmware Version	Build 1.01.B030	Login Timeout (Minutes)	10
Hardware Version	A1	Dual Image	Supported
System Time	11/08/2008 23:40:23		

Device Status and Quick Configurations			
SNTP	Disabled	Jumbo Frame	Disabled
Spanning Tree	Disabled	MLD Snooping	Disabled
SNMP	Disabled	IGMP Snooping	Disabled
Safeguard Engine	Disabled	MAC Notification	Disabled
System Log	Disabled	802.1x	Disabled
SSL	Disabled	SSH	Disabled
GVRP	Disabled	Port Mirror	Disabled
Password Encryption	Disabled	Single IP Management	Disabled
Telnet	Enabled (TCP 23)	Clipping	Enabled
Web	Enabled (TCP 80)	HOL Blocking Prevention	Enabled

The screenshot shows the same web management interface, but with the 'Configuration File Backup & Restore' menu item selected. The main content area is titled 'Device Information' and contains the same data as the first screenshot:

Device Information			
Type	DES-3528 Fast Ethernet Switch	MAC Address	00-1E-58-50-1C-F0
Name		IP Address	10.90.90.90 (Static)
Location		Mask	255.0.0.0
System Contact		Gateway	0.0.0.0
Boot PROM Version	Build 1.00.B006	Management VLAN	default
Firmware Version	Build 1.01.B030	Login Timeout (Minutes)	10
Hardware Version	A1	Dual Image	Supported
System Time	11/08/2008 23:40:23		

Device Status and Quick Configurations			
SNTP	Disabled	Jumbo Frame	Disabled
Spanning Tree	Disabled	MLD Snooping	Disabled
SNMP	Disabled	IGMP Snooping	Disabled
Safeguard Engine	Disabled	MAC Notification	Disabled
System Log	Disabled	802.1x	Disabled
SSL	Disabled	SSH	Disabled
GVRP	Disabled	Port Mirror	Disabled
Password Encryption	Disabled	Single IP Management	Disabled
Telnet	Enabled (TCP 23)	Clipping	Enabled
Web	Enabled (TCP 80)	HOL Blocking Prevention	Enabled

DES-3528 - Microsoft Internet Explorer provided by D-Link Australia

http://10.90.90.90/www/main.html

DES-3528

D-Link Building Networks for People

Power xStack Console xFP Master

DES-3528 Console

2 4 6 8 10 12 14 16 18 20 22 24 25T 25F 26T 26F 27 28 29 30 31 32

Refresh Interval 10 secs Apply

System Up Time: 00 Days 00:45:21 Logged in as Administrator, Anonymous - 10.90.90.91 Logout

DES-3528

- Configuration
 - System Information
 - Serial Port Settings
 - IP Address
 - Port Configuration
 - Static ARP Settings
 - User Accounts
 - System Log Configuration
 - System Severity Settings
 - DHCP/BOOTP Relay
 - DHCP Auto Configuration Settings
 - MAC Address Aging Time
 - Web Settings
 - Telnet Settings
 - Password Encryption
 - Cipaging Settings
 - Firmware Information
 - Dual Configuration Settings
 - Ping Test
 - SNTP Settings
 - MAC Notification Settings
 - SNMP Settings
 - Time Range Settings
 - Single IP Management
- L2 Features
- QoS
- Security
- ACL
- Monitoring

System Information

MAC Address 00-1E-59-50-1C-F0

Firmware Version Build 1.01.B030

Hardware Version A1

System Name

System Location

System Contact

Apply

DES-3528 - Microsoft Internet Explorer provided by D-Link Australia

http://10.90.90.90/www/main.html

DES-3528

D-Link Building Networks for People

Power xStack Console xFP Master

DES-3528 Console

2 4 6 8 10 12 14 16 18 20 22 24 25T 25F 26T 26F 27 28 29 30 31 32

Refresh Interval 10 secs Apply

System Up Time: 00 Days 00:45:52 Logged in as Administrator, Anonymous - 10.90.90.91 Logout

DES-3528

- Configuration
 - System Information
 - Serial Port Settings
 - IP Address
 - Port Configuration
 - Static ARP Settings
 - User Accounts
 - System Log Configuration
 - System Severity Settings
 - DHCP/BOOTP Relay
 - DHCP Auto Configuration Settings
 - MAC Address Aging Time
 - Web Settings
 - Telnet Settings
 - Password Encryption
 - Cipaging Settings
 - Firmware Information
 - Dual Configuration Settings
 - Ping Test
 - SNTP Settings
 - MAC Notification Settings
 - SNMP Settings
 - Time Range Settings
 - Single IP Management
- L2 Features
- QoS
- Security
- ACL
- Monitoring

Serial Port Settings

Baud Rate 115200

Auto Logout 10 minutes

Data Bits 8

Parity Bits None

Stop Bits 1

Apply

DES-3528 - Microsoft Internet Explorer provided by D-Link Australia

http://10.90.90.90/www/main.html

DES-3528

D-Link Building Networks for People

DES-3528 Console

System Up Time: 00 Days 00:46:02 Logged in as Administrator, Anonymous - 10.90.90.91 Logout

Refresh Interval: 10 secs

IP Address

Static DHCP BOOTP

IP Address: 10 90 90 90

Subnet Mask: 255 0 0 0

Gateway: 0 0 0 0

Management VLAN Name: default

Apply

Done

DES-3528 - Microsoft Internet Explorer provided by D-Link Australia

http://10.90.90.90/www/main.html

DES-3528

D-Link Building Networks for People

DES-3528 Console

System Up Time: 00 Days 00:47:26 Logged in as Administrator, Anonymous - 10.90.90.91 Logout

Refresh Interval: 10 secs

Port Settings

From Port: 01 To Port: 01 State: Enabled Speed/Duplex: Auto Flow Control: Disabled Address Learning: Enabled Medium Type: Copper

Apply Refresh

Port	State	Speed/Duplex	Flow Control	Connection	Address Learning
01	Enabled	Auto	Disabled	Link Down	Enabled
02	Enabled	Auto	Disabled	Link Down	Enabled
03	Enabled	Auto	Disabled	Link Down	Enabled
04	Enabled	Auto	Disabled	Link Down	Enabled
05	Enabled	Auto	Disabled	Link Down	Enabled
06	Enabled	Auto	Disabled	Link Down	Enabled
07	Enabled	Auto	Disabled	Link Down	Enabled
08	Enabled	Auto	Disabled	Link Down	Enabled
09	Enabled	Auto	Disabled	Link Down	Enabled
10	Enabled	Auto	Disabled	Link Down	Enabled
11	Enabled	Auto	Disabled	Link Down	Enabled
12	Enabled	Auto	Disabled	Link Down	Enabled
13	Enabled	Auto	Disabled	Link Down	Enabled
14	Enabled	Auto	Disabled	Link Down	Enabled
15	Enabled	Auto	Disabled	Link Down	Enabled
16	Enabled	Auto	Disabled	Link Down	Enabled
17	Enabled	Auto	Disabled	Link Down	Enabled
18	Enabled	Auto	Disabled	Link Down	Enabled
19	Enabled	Auto	Disabled	Link Down	Enabled
20	Enabled	Auto	Disabled	Link Down	Enabled
21	Enabled	Auto	Disabled	Link Down	Enabled
22	Enabled	Auto	Disabled	100M/Full/None	Enabled
23	Enabled	Auto	Disabled	Link Down	Enabled
24	Enabled	Auto	Disabled	Link Down	Enabled
25 (C)	Enabled	Auto	Disabled	Link Down	Enabled
25 (F)	Enabled	Auto	Disabled	Link Down	Enabled
26 (C)	Enabled	Auto	Disabled	Link Down	Enabled
26 (F)	Enabled	Auto	Disabled	Link Down	Enabled
27	Enabled	Auto	Disabled	Link Down	Enabled
28	Enabled	Auto	Disabled	Link Down	Enabled

DES-3528 - Microsoft Internet Explorer provided by D-Link Australia

http://10.90.90.90/www/main.html

DES-3528

D-Link
Building Networks for People

DES-3528

System Up Time: 00 Days 00:41:35 | Logged in as Administrator, Anonymous - 10.90.90.91 | Logout

Configuration

- System Information
- Serial Port Settings
- IP Address
- Port Configuration
 - Port Settings
 - Port Description
 - Port Error Disabled
 - Static ARP Settings
 - User Accounts
- System Log Configuration
 - System Log Settings
 - System Log Server
 - System Severity Settings
- DHCP/BOOTP Relay
 - DHCP/BOOTP Relay Global S
 - DHCP/BOOTP Relay Interfac
 - DHCP Auto Configuration Setting
 - MAC Address Aging Time
- Web Settings
- Telnet Settings
- Password Encryption
- Cpaping Settings
- Firmware Information
- Dual Configuration Settings
- Ping Test
- SNTP Settings
- MAC Notification Settings
- SNMP Settings
 - Time Range Settings
 - Single IP Management
- L2 Features

Received(Rx)

Port: 22

Rx Packets Analysis - Port: 22

Bytes: 127
Packets: 2

Unit: (Packets/sec or Bytes/sec)

Time Interval: 1s | Record Number: 200

ShowHide: Bytes Packets

DES-3528 - Microsoft Internet Explorer provided by D-Link Australia

http://10.90.90.90/www/main.html

DES-3528

D-Link
Building Networks for People

DES-3528

System Up Time: 00 Days 00:47:46 | Logged in as Administrator, Anonymous - 10.90.90.91 | Logout

Configuration

- System Information
- Serial Port Settings
- IP Address
- Port Configuration
 - Port Settings
 - Port Description
 - Port Error Disabled
 - Static ARP Settings
 - User Accounts
- System Log Configuration
 - System Log Settings
 - System Severity Settings
- DHCP/BOOTP Relay
 - DHCP Auto Configuration Settings
 - MAC Address Aging Time
- Web Settings
- Telnet Settings
- Password Encryption
- Cpaping Settings
- Firmware Information
- Dual Configuration Settings
- Ping Test
- SNTP Settings
- MAC Notification Settings
- SNMP Settings
 - Time Range Settings
 - Single IP Management
- L2 Features
- QoS
- Security
- ACL
- Monitoring

Port Description

From Port: 01 | To Port: 01 | Medium Type: Copper

Port	Description
01	
02	
03	
04	
05	
06	
07	
08	
09	
10	
11	
12	
13	
14	
15	
16	
17	
18	
19	
20	
21	
22	
23	
24	
25	

DES-3528 - Microsoft Internet Explorer provided by D-Link Australia

http://10.90.90.90/www/main.html

DES-3528

D-Link Building Networks for People

DES-3528 Console

System Up Time: 00 Days 00:47:57 Logged in as Administrator, Anonymous - 10.90.90.91 Logout

Port Error Disabled

Port	Port State	Connection Status	Reason

Save Tools

- DES-3528
 - Configuration
 - System Information
 - Serial Port Settings
 - IP Address
 - Port Configuration
 - Port Settings
 - Port Description
 - Port Error Disabled
 - Static ARP Settings
 - User Accounts
 - System Log Configuration
 - System Severity Settings
 - DHCP/BOOTP Relay
 - DHCP Auto Configuration Settings
 - MAC Address Aging Time
 - Web Settings
 - Telnet Settings
 - Password Encryption
 - Cpiping Settings
 - Firmware Information
 - Dual Configuration Settings
 - Ping Test
 - SNTP Settings
 - MAC Notification Settings
 - SNMP Settings
 - Time Range Settings
 - Single IP Management
- L2 Features
 - QoS
 - Security
 - ACL
 - Monitoring

DES-3528 - Microsoft Internet Explorer provided by D-Link Australia

http://10.90.90.90/www/main.html

DES-3528

D-Link Building Networks for People

DES-3528 Console

System Up Time: 00 Days 00:48:18 Logged in as Administrator, Anonymous - 10.90.90.91 Logout

Static ARP Settings

Global Settings

ARP Aging Time (0-65535) min

Add Static ARP Entry

IP Address MAC Address

Total Entries: 3

Interface	IP Address	MAC Address	Type		
System	10.0.0.0	FF-FF-FF-FF-FF-FF	Local/Broadcast	<input type="button" value="Edit"/>	<input type="button" value="Delete"/>
System	10.90.90.90	00-1E-58-50-1C-F0	Local	<input type="button" value="Edit"/>	<input type="button" value="Delete"/>
System	10.255.255.255	FF-FF-FF-FF-FF-FF	Local/Broadcast	<input type="button" value="Edit"/>	<input type="button" value="Delete"/>

Save Tools

- DES-3528
 - Configuration
 - System Information
 - Serial Port Settings
 - IP Address
 - Port Configuration
 - Port Settings
 - Port Description
 - Port Error Disabled
 - Static ARP Settings
 - User Accounts
 - System Log Configuration
 - System Severity Settings
 - DHCP/BOOTP Relay
 - DHCP Auto Configuration Settings
 - MAC Address Aging Time
 - Web Settings
 - Telnet Settings
 - Password Encryption
 - Cpiping Settings
 - Firmware Information
 - Dual Configuration Settings
 - Ping Test
 - SNTP Settings
 - MAC Notification Settings
 - SNMP Settings
 - Time Range Settings
 - Single IP Management
- L2 Features
 - QoS
 - Security
 - ACL
 - Monitoring

DES-3528 - Microsoft Internet Explorer provided by D-Link Australia

http://10.90.90.90/www/main.html

DES-3528

D-Link
Building Networks for People

DES-3528 Console

System Up Time: 00 Days 00:48:38 Logged in as Administrator, Anonymous - 10.90.90.91 Logout

User Accounts

Add User Accounts

User Name: Password:

Access Right: Admin Confirm Password:

Apply

Note: Password/User Name should be less than 15 characters.

Total Entries : 0

User Name	Access Right	Old Password	New Password	Confirm Password	Encryption
-----------	--------------	--------------	--------------	------------------	------------

DES-3528 - Microsoft Internet Explorer provided by D-Link Australia

http://10.90.90.90/www/main.html

DES-3528

D-Link
Building Networks for People

DES-3528 Console

System Up Time: 00 Days 00:48:48 Logged in as Administrator, Anonymous - 10.90.90.91 Logout

System Log Settings

System Log: Disabled Enabled

Apply

System Log Save Mode Settings

Save Mode: On Demand minutes (1-65535)

On Demand
Time Interval
Log Trigger

Apply

DES-3528 - Microsoft Internet Explorer provided by D-Link Australia

http://10.90.90.90/www/main.html

DES-3528

D-Link Building Networks for People

DES-3528 Console

System Up Time: 00 Days 00:49:30 Logged in as Administrator, Anonymous - 10.90.90.91 Logout

System Log Server

Add System Log Server

Server ID: 1 Severity: Warning

Server IP Address: Facility: Local 0

UDP Port (514 or 6000-65535): 514 Status: Disabled

Apply

System Log Server List

Server ID	Server IP Address	Severity	Facility	UDP Port	Status

DES-3528 - Microsoft Internet Explorer provided by D-Link Australia

http://10.90.90.90/www/main.html

DES-3528

D-Link Building Networks for People

DES-3528 Console

System Up Time: 00 Days 00:49:41 Logged in as Administrator, Anonymous - 10.90.90.91 Logout

System Severity Settings

System Severity: Trap

Severity Level: Critical

Apply

System Severity Table

System Severity	Severity Level
Trap	Information
Log	Information

DES-3528 - Microsoft Internet Explorer provided by D-Link Australia

http://10.90.90.90/www/main.html

DES-3528

D-Link Building Networks for People

DES-3528 Console

System Up Time: 00 Days 00:50:02 Logged in as Administrator, Anonymous - 10.90.90.91 Logout

DHCP/BOOTP Relay Global Settings

DHCP/BOOTP Relay State: Disabled

DHCP/BOOTP Relay Hops Count Limit (1-16): 4

DHCP/BOOTP Relay Time Threshold (0-65535): 0 sec

DHCP Relay Agent Information Option 82 State: Disabled

DHCP Relay Agent Information Option 82 Check: Disabled

DHCP Relay Agent Information Option 82 Policy: Replace

Apply

DES-3528 - Microsoft Internet Explorer provided by D-Link Australia

http://10.90.90.90/www/main.html

DES-3528

D-Link Building Networks for People

DES-3528 Console

System Up Time: 00 Days 00:50:12 Logged in as Administrator, Anonymous - 10.90.90.91 Logout

DHCP/BOOTP Relay Interface Settings

Interface: System

Server IP: [Empty]

Apply

DHCP/BOOTP Relay Interface Table

Interface	Server1	Server2	Server3	Server4

DES-3528 - Microsoft Internet Explorer provided by D-Link Australia

http://10.90.90.90/www/main.html

DES-3528

D-Link Building Networks for People

DES-3528 Console

Power xStack Console IPFG Master 2 4 6 8 10 12 14 16 18 20 22 24 25T 25F 26T 26F 27 28 29 30 31 32 33 34 35 36 37 38 39 40 41 42 43 44 45 46 47 48 49 50 51 52 53 54 55 56 57 58 59 60 61 62 63 64 65 66 67 68 69 70 71 72 73 74 75 76 77 78 79 80 81 82 83 84 85 86 87 88 89 90 91 92 93 94 95 96 97 98 99 100 101 102 103 104 105 106 107 108 109 110 111 112 113 114 115 116 117 118 119 120 121 122 123 124 125 126 127 128 129 130 131 132 133 134 135 136 137 138 139 140 141 142 143 144 145 146 147 148 149 150 151 152 153 154 155 156 157 158 159 160 161 162 163 164 165 166 167 168 169 170 171 172 173 174 175 176 177 178 179 180 181 182 183 184 185 186 187 188 189 190 191 192 193 194 195 196 197 198 199 200 201 202 203 204 205 206 207 208 209 210 211 212 213 214 215 216 217 218 219 220 221 222 223 224 225 226 227 228 229 230 231 232 233 234 235 236 237 238 239 240 241 242 243 244 245 246 247 248 249 250 251 252 253 254 255 256 257 258 259 260 261 262 263 264 265 266 267 268 269 270 271 272 273 274 275 276 277 278 279 280 281 282 283 284 285 286 287 288 289 290 291 292 293 294 295 296 297 298 299 300 301 302 303 304 305 306 307 308 309 310 311 312 313 314 315 316 317 318 319 320 321 322 323 324 325 326 327 328 329 330 331 332 333 334 335 336 337 338 339 340 341 342 343 344 345 346 347 348 349 350 351 352 353 354 355 356 357 358 359 360 361 362 363 364 365 366 367 368 369 370 371 372 373 374 375 376 377 378 379 380 381 382 383 384 385 386 387 388 389 390 391 392 393 394 395 396 397 398 399 400 401 402 403 404 405 406 407 408 409 410 411 412 413 414 415 416 417 418 419 420 421 422 423 424 425 426 427 428 429 430 431 432 433 434 435 436 437 438 439 440 441 442 443 444 445 446 447 448 449 450 451 452 453 454 455 456 457 458 459 460 461 462 463 464 465 466 467 468 469 470 471 472 473 474 475 476 477 478 479 480 481 482 483 484 485 486 487 488 489 490 491 492 493 494 495 496 497 498 499 500 501 502 503 504 505 506 507 508 509 510 511 512 513 514 515 516 517 518 519 520 521 522 523 524 525 526 527 528 529 530 531 532 533 534 535 536 537 538 539 540 541 542 543 544 545 546 547 548 549 550 551 552 553 554 555 556 557 558 559 560 561 562 563 564 565 566 567 568 569 570 571 572 573 574 575 576 577 578 579 580 581 582 583 584 585 586 587 588 589 590 591 592 593 594 595 596 597 598 599 600 601 602 603 604 605 606 607 608 609 610 611 612 613 614 615 616 617 618 619 620 621 622 623 624 625 626 627 628 629 630 631 632 633 634 635 636 637 638 639 640 641 642 643 644 645 646 647 648 649 650 651 652 653 654 655 656 657 658 659 660 661 662 663 664 665 666 667 668 669 670 671 672 673 674 675 676 677 678 679 680 681 682 683 684 685 686 687 688 689 690 691 692 693 694 695 696 697 698 699 700 701 702 703 704 705 706 707 708 709 710 711 712 713 714 715 716 717 718 719 720 721 722 723 724 725 726 727 728 729 730 731 732 733 734 735 736 737 738 739 740 741 742 743 744 745 746 747 748 749 750 751 752 753 754 755 756 757 758 759 760 761 762 763 764 765 766 767 768 769 770 771 772 773 774 775 776 777 778 779 780 781 782 783 784 785 786 787 788 789 790 791 792 793 794 795 796 797 798 799 800 801 802 803 804 805 806 807 808 809 810 811 812 813 814 815 816 817 818 819 820 821 822 823 824 825 826 827 828 829 830 831 832 833 834 835 836 837 838 839 840 841 842 843 844 845 846 847 848 849 850 851 852 853 854 855 856 857 858 859 860 861 862 863 864 865 866 867 868 869 870 871 872 873 874 875 876 877 878 879 880 881 882 883 884 885 886 887 888 889 890 891 892 893 894 895 896 897 898 899 900 901 902 903 904 905 906 907 908 909 910 911 912 913 914 915 916 917 918 919 920 921 922 923 924 925 926 927 928 929 930 931 932 933 934 935 936 937 938 939 940 941 942 943 944 945 946 947 948 949 950 951 952 953 954 955 956 957 958 959 960 961 962 963 964 965 966 967 968 969 970 971 972 973 974 975 976 977 978 979 980 981 982 983 984 985 986 987 988 989 990 991 992 993 994 995 996 997 998 999 1000

System Up Time: 00 Days 00:50:22 Logged in as Administrator, Anonymous - 10.90.90.91 Logout

DHCP Auto Configuration Settings

Auto Configuration State Disabled Enabled

Apply

- Configuration
 - System Information
 - Serial Port Settings
 - IP Address
 - Port Configuration
 - Port Settings
 - Port Description
 - Port Error Disabled
 - Static ARP Settings
 - User Accounts
 - System Log Configuration
 - System Log Settings
 - System Log Server
 - System Severity Settings
 - DHCP/BOOTP Relay
 - DHCP/BOOTP Relay Global S
 - DHCP/BOOTP Relay Interface
 - DHCP Auto Configuration Setting
 - MAC Address Aging Time
 - Web Settings
 - Telnet Settings
 - Password Encryption
 - Clipping Settings
 - Firmware Information
 - Dual Configuration Settings
 - Ping Test
 - SNTP Settings
 - MAC Notification Settings
 - SNMP Settings
 - Time Range Settings
 - Single IP Management
 - L2 Features

DES-3528 - Microsoft Internet Explorer provided by D-Link Australia

http://10.90.90.90/www/main.html

DES-3528

D-Link Building Networks for People

DES-3528 Console

Power xStack Console IPFG Master 2 4 6 8 10 12 14 16 18 20 22 24 25T 25F 26T 26F 27 28 29 30 31 32 33 34 35 36 37 38 39 40 41 42 43 44 45 46 47 48 49 50 51 52 53 54 55 56 57 58 59 60 61 62 63 64 65 66 67 68 69 70 71 72 73 74 75 76 77 78 79 80 81 82 83 84 85 86 87 88 89 90 91 92 93 94 95 96 97 98 99 100 101 102 103 104 105 106 107 108 109 110 111 112 113 114 115 116 117 118 119 120 121 122 123 124 125 126 127 128 129 130 131 132 133 134 135 136 137 138 139 140 141 142 143 144 145 146 147 148 149 150 151 152 153 154 155 156 157 158 159 160 161 162 163 164 165 166 167 168 169 170 171 172 173 174 175 176 177 178 179 180 181 182 183 184 185 186 187 188 189 190 191 192 193 194 195 196 197 198 199 200 201 202 203 204 205 206 207 208 209 210 211 212 213 214 215 216 217 218 219 220 221 222 223 224 225 226 227 228 229 230 231 232 233 234 235 236 237 238 239 240 241 242 243 244 245 246 247 248 249 250 251 252 253 254 255 256 257 258 259 260 261 262 263 264 265 266 267 268 269 270 271 272 273 274 275 276 277 278 279 280 281 282 283 284 285 286 287 288 289 290 291 292 293 294 295 296 297 298 299 300 301 302 303 304 305 306 307 308 309 310 311 312 313 314 315 316 317 318 319 320 321 322 323 324 325 326 327 328 329 330 331 332 333 334 335 336 337 338 339 340 341 342 343 344 345 346 347 348 349 350 351 352 353 354 355 356 357 358 359 360 361 362 363 364 365 366 367 368 369 370 371 372 373 374 375 376 377 378 379 380 381 382 383 384 385 386 387 388 389 390 391 392 393 394 395 396 397 398 399 400 401 402 403 404 405 406 407 408 409 410 411 412 413 414 415 416 417 418 419 420 421 422 423 424 425 426 427 428 429 430 431 432 433 434 435 436 437 438 439 440 441 442 443 444 445 446 447 448 449 450 451 452 453 454 455 456 457 458 459 460 461 462 463 464 465 466 467 468 469 470 471 472 473 474 475 476 477 478 479 480 481 482 483 484 485 486 487 488 489 490 491 492 493 494 495 496 497 498 499 500 501 502 503 504 505 506 507 508 509 510 511 512 513 514 515 516 517 518 519 520 521 522 523 524 525 526 527 528 529 530 531 532 533 534 535 536 537 538 539 540 541 542 543 544 545 546 547 548 549 550 551 552 553 554 555 556 557 558 559 560 561 562 563 564 565 566 567 568 569 570 571 572 573 574 575 576 577 578 579 580 581 582 583 584 585 586 587 588 589 590 591 592 593 594 595 596 597 598 599 600 601 602 603 604 605 606 607 608 609 610 611 612 613 614 615 616 617 618 619 620 621 622 623 624 625 626 627 628 629 630 631 632 633 634 635 636 637 638 639 640 641 642 643 644 645 646 647 648 649 650 651 652 653 654 655 656 657 658 659 660 661 662 663 664 665 666 667 668 669 670 671 672 673 674 675 676 677 678 679 680 681 682 683 684 685 686 687 688 689 690 691 692 693 694 695 696 697 698 699 700 701 702 703 704 705 706 707 708 709 710 711 712 713 714 715 716 717 718 719 720 721 722 723 724 725 726 727 728 729 730 731 732 733 734 735 736 737 738 739 740 741 742 743 744 745 746 747 748 749 750 751 752 753 754 755 756 757 758 759 760 761 762 763 764 765 766 767 768 769 770 771 772 773 774 775 776 777 778 779 780 781 782 783 784 785 786 787 788 789 790 791 792 793 794 795 796 797 798 799 800 801 802 803 804 805 806 807 808 809 810 811 812 813 814 815 816 817 818 819 820 821 822 823 824 825 826 827 828 829 830 831 832 833 834 835 836 837 838 839 840 841 842 843 844 845 846 847 848 849 850 851 852 853 854 855 856 857 858 859 860 861 862 863 864 865 866 867 868 869 870 871 872 873 874 875 876 877 878 879 880 881 882 883 884 885 886 887 888 889 890 891 892 893 894 895 896 897 898 899 900 901 902 903 904 905 906 907 908 909 910 911 912 913 914 915 916 917 918 919 920 921 922 923 924 925 926 927 928 929 930 931 932 933 934 935 936 937 938 939 940 941 942 943 944 945 946 947 948 949 950 951 952 953 954 955 956 957 958 959 960 961 962 963 964 965 966 967 968 969 970 971 972 973 974 975 976 977 978 979 980 981 982 983 984 985 986 987 988 989 990 991 992 993 994 995 996 997 998 999 1000

System Up Time: 00 Days 00:50:33 Logged in as Administrator, Anonymous - 10.90.90.91 Logout

MAC Address Aging Time

MAC Address Aging Time (10-1000000) sec

Apply

- Configuration
 - System Information
 - Serial Port Settings
 - IP Address
 - Port Configuration
 - Port Settings
 - Port Description
 - Port Error Disabled
 - Static ARP Settings
 - User Accounts
 - System Log Configuration
 - System Log Settings
 - System Log Server
 - System Severity Settings
 - DHCP/BOOTP Relay
 - DHCP/BOOTP Relay Global S
 - DHCP/BOOTP Relay Interface
 - DHCP Auto Configuration Setting
 - MAC Address Aging Time
 - Web Settings
 - Telnet Settings
 - Password Encryption
 - Clipping Settings
 - Firmware Information
 - Dual Configuration Settings
 - Ping Test
 - SNTP Settings
 - MAC Notification Settings
 - SNMP Settings
 - Time Range Settings
 - Single IP Management
 - L2 Features

DES-3528 - Microsoft Internet Explorer provided by D-Link Australia

http://10.90.90.90/www/main.html

DES-3528

D-Link
Building Networks for People

DES-3528

Refresh Interval: 10 secs

System Up Time: 00 Days 00:40:43 | Logged in as Administrator, Anonymous - 10.90.90.91 | Logout

Web Settings

WEB State: Disabled Enabled

Port:

Apply

- Configuration
 - System Information
 - Serial Port Settings
 - IP Address
 - Port Configuration
 - Port Settings
 - Port Description
 - Port Error Disabled
 - Static ARP Settings
 - User Accounts
 - System Log Configuration
 - System Log Settings
 - System Log Server
 - System Severity Settings
 - DHCPBOOTP Relay
 - DHCPBOOTP Relay Global S
 - DHCPBOOTP Relay Interface
 - DHCP Auto Configuration Setting
 - MAC Address Aging Time
 - Web Settings
 - Telnet Settings
 - Password Encryption
 - Clipping Settings
 - Firmware Information
 - Dual Configuration Settings
 - Ping Test
 - SNTP Settings
 - MAC Notification Settings
 - SNMP Settings
 - Time Range Settings
 - Single IP Management
- L2 Features

DES-3528 - Microsoft Internet Explorer provided by D-Link Australia

http://10.90.90.90/www/main.html

DES-3528

D-Link
Building Networks for People

DES-3528

Refresh Interval: 10 secs

System Up Time: 00 Days 00:53:08 | Logged in as Administrator, Anonymous - 10.90.90.91 | Logout

Telnet Settings

Telnet State: Disabled Enabled

Port:

Apply

- Configuration
 - System Information
 - Serial Port Settings
 - IP Address
 - Port Configuration
 - Port Settings
 - Port Description
 - Port Error Disabled
 - Static ARP Settings
 - User Accounts
 - System Log Configuration
 - System Log Settings
 - System Log Server
 - System Severity Settings
 - DHCPBOOTP Relay
 - DHCPBOOTP Relay Global S
 - DHCPBOOTP Relay Interface
 - DHCP Auto Configuration Setting
 - MAC Address Aging Time
 - Web Settings
 - Telnet Settings
 - Password Encryption
 - Clipping Settings
 - Firmware Information
 - Dual Configuration Settings
 - Ping Test
 - SNTP Settings
 - MAC Notification Settings
 - SNMP Settings
 - Time Range Settings
 - Single IP Management
- L2 Features

DES-3528 - Microsoft Internet Explorer provided by D-Link Australia

http://10.90.90.90/www/main.html

DES-3528

D-Link Building Networks for People

DES-3528 Console

Power xStack Console IPFG Master 2 4 6 8 10 12 14 16 18 20 22 24 25T 25F 26T 26F

Refresh Interval 10 secs Apply

System Up Time: 00 Days 00:43:19 Logged in as Administrator, Anonymous - 10.90.90.91 Logout

DES-3528

- Configuration
 - System Information
 - Serial Port Settings
 - IP Address
 - Port Configuration
 - Port Settings
 - Port Description
 - Port Error Disabled
 - Static ARP Settings
 - User Accounts
 - System Log Configuration
 - System Log Settings
 - System Log Server
 - System Severity Settings
 - DHCP/BOOTP Relay
 - DHCP/BOOTP Relay Global S
 - DHCP/BOOTP Relay Interface
 - DHCP Auto Configuration Setting
 - MAC Address Aging Time
 - Web Settings
 - Telnet Settings
 - Password Encryption**
 - Clipping Settings
 - Firmware Information
 - Dual Configuration Settings
 - Ping Test
 - SNTP Settings
 - MAC Notification Settings
 - SNMP Settings
 - Time Range Settings
 - Single IP Management
 - L2 Features

Password Encryption

Password Encryption State Disabled Enabled

Apply

DES-3528 - Microsoft Internet Explorer provided by D-Link Australia

http://10.90.90.90/www/main.html

DES-3528

D-Link Building Networks for People

DES-3528 Console

Refresh Interval 10 secs Apply

System Up Time: 00 Days 00:53:30 Logged in as Administrator, Anonymous - 10.90.90.91 Logout

DES-3528

- Configuration
 - System Information
 - Serial Port Settings
 - IP Address
 - Port Configuration
 - Port Settings
 - Port Description
 - Port Error Disabled
 - Static ARP Settings
 - User Accounts
 - System Log Configuration
 - System Log Settings
 - System Log Server
 - System Severity Settings
 - DHCP/BOOTP Relay
 - DHCP/BOOTP Relay Global S
 - DHCP/BOOTP Relay Interface
 - DHCP Auto Configuration Setting
 - MAC Address Aging Time
 - Web Settings
 - Telnet Settings
 - Password Encryption
 - Clipping Settings**
 - Firmware Information
 - Dual Configuration Settings
 - Ping Test
 - SNTP Settings
 - MAC Notification Settings
 - SNMP Settings
 - Time Range Settings
 - Single IP Management
 - L2 Features

Clipping Settings

Clipping State Disabled Enabled

Apply

DES-3528 - Microsoft Internet Explorer provided by D-Link Australia

http://10.90.90.90/www/main.html

DES-3528

D-Link Building Networks for People

DES-3528 Console

System Up Time: 00 Days 00:43:40 Logged in as Administrator, Anonymous - 10.90.90.91 Logout

Firmware Information

ID	Version	Size (bytes)	Update Time	From	User	
*1	1.01B030	2331383	2008/05/08 02:09:17	10.90.90.11(R)	Anonymous	Set Boot Delete
2	(Empty)					Set Boot Delete

"" means boot up firmware

(R) means firmware update through Serial Port (RS232)

(T) means firmware update through TELNET

(S) means firmware update through SNMP

(W) means firmware update through WEB

(SSH) means firmware update through SSH

(SIM) means firmware update through Single IP Management

DES-3528 - Microsoft Internet Explorer provided by D-Link Australia

http://10.90.90.90/www/main.html

DES-3528

D-Link Building Networks for People

DES-3528 Console

System Up Time: 00 Days 00:54:01 Logged in as Administrator, Anonymous - 10.90.90.91 Logout

Dual Configuration Settings

ID	Version	Size (bytes)	Update Time	From	User	Boot	
*1	1.01B030	16275	2008/06/25 12:16:32	Local save(R)	factory	*	Set Boot Active Delete
2	(Empty)						Set Boot Active Delete

"" means the current active configuration

(R) means configuration update through Serial Port(RS232)

(T) means configuration update through TELNET

(S) means configuration update through SNMP

(W) means configuration update through WEB

(SSH) means configuration update through SSH

(SIM) means configuration update through Single IP Management

DES-3528 - Microsoft Internet Explorer provided by D-Link Australia

http://10.90.90.90/www/main.html

DES-3528

D-Link Building Networks for People

DES-3528 Console

System Up Time: 00 Days 00:44:11 Logged in as Administrator, Anonymous - 10.90.90.91 Logout

Ping Test

Enter the IP address of the device or station you want to ping, then click **Start**.

Target IP Address :

Repeat Pinging for: Infinite times (1-255 times)

Timeout : (1-99 sec)

DES-3528 - Microsoft Internet Explorer provided by D-Link Australia

http://10.90.90.90/www/main.html

DES-3528

D-Link Building Networks for People

DES-3528 Console

System Up Time: 00 Days 00:54:32 Logged in as Administrator, Anonymous - 10.90.90.91 Logout

Time Settings

Status

SNTP State Disabled Enabled

Current Time 11/08/2008 23:50:41

Time Source System Clock

SNTP Settings

SNTP First Server

SNTP Second Server

SNTP Poll Interval In Seconds (30-99999)

Set Current Time

Date (DD/MM/YYYY)

Time (HH:MM:SS)

DES-3528 - Microsoft Internet Explorer provided by D-Link Australia
http://10.90.90.90/www/main.html

D-Link
Building Networks for People

DES-3528 Console

System Up Time: 00 Days 00:54:53 Logged in as Administrator, Anonymous - 10:90:90:91 Logout

TimeZone Settings

Daylight Saving Time State: Disabled
Daylight Saving Time Offset In Minutes: 60
Time Zone Offset from GMT In +/HH.MM: 00 00

DST Repeating Settings

From: Which Week Of The Month: First
From: Day Of Week: Sun
From: Month: Apr
From: Time In HH MM: 00 00
To: Which Week Of The Month: Last
To: Day Of Week: Sun
To: Month: Oct
To: Time In HH MM: 00 00

DST Annual Settings

From: Month: Apr
From: Day: 29
From: Time In HH MM: 00 00
To: Month: Oct
To: Day: 12
To: Time In HH MM: 00 00

DES-3528 - Microsoft Internet Explorer provided by D-Link Australia
http://10.90.90.90/www/main.html

D-Link
Building Networks for People

DES-3528 Console

System Up Time: 00 Days 00:55:24 Logged in as Administrator, Anonymous - 10:90:90:91 Logout

MAC Notification Global Settings

State: Disabled
Interval (1-2147483647): 1 sec
History Size (1-500): 1

Apply

DES-3528 - Microsoft Internet Explorer provided by D-Link Australia
 http://10.90.90.90/www/main.html

MAC Notification Port Settings

From Port: 01 To Port: 01 State: Disabled

Port	MAC Address Notification State
01	Disabled
02	Disabled
03	Disabled
04	Disabled
05	Disabled
06	Disabled
07	Disabled
08	Disabled
09	Disabled
10	Disabled
11	Disabled
12	Disabled
13	Disabled
14	Disabled
15	Disabled
16	Disabled
17	Disabled
18	Disabled
19	Disabled
20	Disabled
21	Disabled
22	Disabled
23	Disabled
24	Disabled
25	Disabled
26	Disabled

DES-3528 - Microsoft Internet Explorer provided by D-Link Australia
 http://10.90.90.90/www/main.html

SNMP Global State Settings

SNMP Global State: Disabled Enabled

DES-3528 - Microsoft Internet Explorer provided by D-Link Australia
 http://10.90.90.90/www/main.html

D-Link
 Building Networks for People

DES-3528 Console

System Up Time: 00 Days 00:56:06 Logged in as Administrator, Anonymous - 10.90.90.91 Logout

SNMP View Table

View Name:
 Subtree OID:
 View Type:

Total Entries: 8

View Name	Subtree	View Type	
restricted	1.3.6.1.2.1.1	Included	<input type="button" value="Delete"/>
restricted	1.3.6.1.2.1.11	Included	<input type="button" value="Delete"/>
restricted	1.3.6.1.6.3.10.2.1	Included	<input type="button" value="Delete"/>
restricted	1.3.6.1.6.3.11.2.1	Included	<input type="button" value="Delete"/>
restricted	1.3.6.1.6.3.15.1.1	Included	<input type="button" value="Delete"/>
CommunityView	1	Included	<input type="button" value="Delete"/>
CommunityView	1.3.6.1.6.3	Excluded	<input type="button" value="Delete"/>
CommunityView	1.3.6.1.6.3.1	Included	<input type="button" value="Delete"/>

DES-3528 - Microsoft Internet Explorer provided by D-Link Australia
 http://10.90.90.90/www/main.html

D-Link
 Building Networks for People

DES-3528 Console

System Up Time: 00 Days 00:56:16 Logged in as Administrator, Anonymous - 10.90.90.91 Logout

SNMP Group Table

Add Group

Group Name:
 Read View Name:
 Write View Name:
 Notify View Name:
 User-based Security Model:
 Security Level:

Total Entries: 9

Group Name	Read View Name	Write View Name	Notify View Name	User-based Security Model	Security Level	
public	CommunityV...		CommunityV...	SNMPv1	NoAuthNoPriv	<input type="button" value="Delete"/>
public	CommunityV...		CommunityV...	SNMPv2	NoAuthNoPriv	<input type="button" value="Delete"/>
initial	restricted		restricted	SNMPv3	NoAuthNoPriv	<input type="button" value="Delete"/>
private	CommunityV...	CommunityV...	CommunityV...	SNMPv1	NoAuthNoPriv	<input type="button" value="Delete"/>
private	CommunityV...	CommunityV...	CommunityV...	SNMPv2	NoAuthNoPriv	<input type="button" value="Delete"/>
ReadGroup	CommunityV...		CommunityV...	SNMPv1	NoAuthNoPriv	<input type="button" value="Delete"/>
ReadGroup	CommunityV...		CommunityV...	SNMPv2	NoAuthNoPriv	<input type="button" value="Delete"/>
WriteGroup	CommunityV...	CommunityV...	CommunityV...	SNMPv1	NoAuthNoPriv	<input type="button" value="Delete"/>
WriteGroup	CommunityV...	CommunityV...	CommunityV...	SNMPv2	NoAuthNoPriv	<input type="button" value="Delete"/>

DES-3528 - Microsoft Internet Explorer provided by D-Link Australia
 http://10.90.90.90/www/main.html

D-Link Building Networks for People

DES-3528 Console

System Up Time: 00 Days 00:56:27 Logged in as Administrator, Anonymous - 10.90.90.91 Logout

SNMP User Table

Add User

User Name:

Group Name:

SNMP Version: V3

SNMP V3 Encryption: None

Auth-Protocol by Password: MD5 Password:

Priv-Protocol by Password: None Password:

Auth-Protocol by Key: MD5 Key:

Priv-Protocol by Key: None Key:

Apply

Total Entries: 1

User Name	Group Name	SNMP Version	Auth-Protocol	Priv-Protocol	
initial	initial	V3	None	None	Delete

DES-3528 - Microsoft Internet Explorer provided by D-Link Australia
 http://10.90.90.90/www/main.html

D-Link Building Networks for People

DES-3528 Console

System Up Time: 00 Days 00:56:37 Logged in as Administrator, Anonymous - 10.90.90.91 Logout

SNMP Community Table

Add Community

Community Name:

View Name:

Access Right: Read Only

Apply

Total Entries: 2

Community Name	View Name	Access Right	
private	CommunityView	read_write	Delete
public	CommunityView	read_only	Delete

DES-3528 - Microsoft Internet Explorer provided by D-Link Australia

http://10.90.90.90/www/main.html

DES-3528

D-Link Building Networks for People

DES-3528 Console

System Up Time: 00 Days 00:56:47 Logged in as Administrator, Anonymous - 10.90.90.91 Logout

SNMP Host Table

Add Host Table

Host IP Address:

User-based Security Model:

Security Level:

Community String / SNMPv3 User Name:

Apply

Total Entries: 0

Host IP Address	User-based Security Model	Security Level	Community Name/SNMPv3 User Name

DES-3528 - Microsoft Internet Explorer provided by D-Link Australia

http://10.90.90.90/www/main.html

DES-3528

D-Link Building Networks for People

DES-3528 Console

System Up Time: 00 Days 00:56:58 Logged in as Administrator, Anonymous - 10.90.90.91 Logout

SNMP Engine ID

Engine ID:

Apply

Note: Engine ID length is 10-64, the accepted character is from 0 to F.

DES-3528 - Microsoft Internet Explorer provided by D-Link Australia

http://10.90.90.90/www/main.html

DES-3528

D-Link
Building Networks for People

DES-3528 Console

Power xStack Console IPX Master

2 4 6 8 10 12 14 16 18 20 22 24 25T 25F 26T 26F

Refresh Interval: 10 secs

System Up Time: 00 Days 00:57:09 Logged in as Administrator, Anonymous - 10.90.90.91 Logout

SNMP Trap Configuration

SNMP Traps: Enabled

SNMP Authentication Traps: Enabled

Apply

Configuration

- System Information
- Serial Port Settings
- IP Address
- Port Configuration
- Static ARP Settings
- User Accounts
- System Log Configuration
- System Severity Settings
- DHCP/BOOTP Relay
- DHCP Auto Configuration Settings
- MAC Address Aging Time
- Web Settings
- Telnet Settings
- Password Encryption
- Clipping Settings
- Firmware Information
- Dual Configuration Settings
- Ping Test
- SNMP Settings
- MAC Notification Settings
- SNMP Settings
 - SNMP Global State
 - SNMP View Table
 - SNMP Group Table
 - SNMP User Table
 - SNMP Community Table
 - SNMP Host Table
 - SNMP Engine ID
 - SNMP Trap Configuration**
- Time Range Settings
- Single IP Management
- L2 Features
- QoS
- Security
- ACL
- Monitoring

DES-3528 - Microsoft Internet Explorer provided by D-Link Australia

http://10.90.90.90/www/main.html

DES-3528

D-Link
Building Networks for People

DES-3528 Console

Power xStack Console IPX Master

2 4 6 8 10 12 14 16 18 20 22 24 25T 25F 26T 26F

Refresh Interval: 10 secs

System Up Time: 00 Days 00:57:19 Logged in as Administrator, Anonymous - 10.90.90.91 Logout

Time Range Settings

Range Name: (Max Support 32 Characters)

Hours (HH MM SS): Start Time 00:00:00 End Time 00:00:00

Weekdays: Mon Tue Wed Thu Fri Sat Sun Select All Days

Apply

Total Entries: 0

Range Name	Days	Start Time	End Time
Total Entries: 0			

Configuration

- System Information
- Serial Port Settings
- IP Address
- Port Configuration
- Static ARP Settings
- User Accounts
- System Log Configuration
- System Severity Settings
- DHCP/BOOTP Relay
- DHCP Auto Configuration Settings
- MAC Address Aging Time
- Web Settings
- Telnet Settings
- Password Encryption
- Clipping Settings
- Firmware Information
- Dual Configuration Settings
- Ping Test
- SNMP Settings
- MAC Notification Settings
- SNMP Settings
 - SNMP Global State
 - SNMP View Table
 - SNMP Group Table
 - SNMP User Table
 - SNMP Community Table
 - SNMP Host Table
 - SNMP Engine ID
 - SNMP Trap Configuration
- Time Range Settings**
- Single IP Management
- L2 Features
- QoS
- Security
- ACL
- Monitoring

DES-3528 - Microsoft Internet Explorer provided by D-Link Australia

http://10.90.90.90/www/main.html

DES-3528

D-Link Building Networks for People

DES-3528 Console

Refresh Interval: 10 secs

System Up Time: 00 Days 00:57:50

Logged in as Administrator, Anonymous - 10.90.90.91

Single IP Settings

SIM State: Disabled

Role State: Candidate

Group Name:

Discovery Interval (30 - 90): 30 sec

Hold Time Count (100-255): 100 sec

Apply

- Configuration
 - System Information
 - Serial Port Settings
 - IP Address
 - Port Configuration
 - Static ARP Settings
 - User Accounts
 - System Log Configuration
 - System Severity Settings
 - DHCP/BOOTP Relay
 - DHCP Auto Configuration Settings
 - MAC Address Aging Time
 - Web Settings
 - Telnet Settings
 - Password Encryption
 - Cpaping Settings
 - Firmware Information
 - Dual Configuration Settings
 - Ping Test
 - SNTP Settings
 - MAC Notification Settings
 - SNMP Settings
 - Time Range Settings
 - Single IP Management
 - Single IP Settings
 - L2 Features
 - QoS
 - Security
 - ACL
 - Monitoring

DES-3528 - Microsoft Internet Explorer provided by D-Link Australia

http://10.90.90.90/www/main.html

DES-3528

D-Link Building Networks for People

DES-3528 Console

Refresh Interval: 10 secs

System Up Time: 00 Days 00:58:42

Logged in as Administrator, Anonymous - 10.90.90.91

File Group Device View Help

(default:50-1C-F0)

(default:50-1C-F)

Device name	Local port	Speed	Remote port	Mac Address	Model name
(default:50-1C-F0)	-	-	-	00-1E-58-50-1C-F0	DES-3528 L2 Switch

Update data OK

- Configuration
 - System Information
 - Serial Port Settings
 - IP Address
 - Port Configuration
 - Static ARP Settings
 - User Accounts
 - System Log Configuration
 - System Severity Settings
 - DHCP/BOOTP Relay
 - DHCP Auto Configuration Settings
 - MAC Address Aging Time
 - Web Settings
 - Telnet Settings
 - Password Encryption
 - Cpaping Settings
 - Firmware Information
 - Dual Configuration Settings
 - Ping Test
 - SNTP Settings
 - MAC Notification Settings
 - SNMP Settings
 - Time Range Settings
 - Single IP Management
 - Single IP Settings
 - Topology
 - Firmware Upgrade
 - Configuration File Backup/Resto
 - Upload Log File
 - L2 Features
 - QoS
 - Security
 - ACL
 - Monitoring

DES-3528 - Microsoft Internet Explorer provided by D-Link Australia

http://10.90.90.90/www/main.html

DES-3528

D-Link Building Networks for People

DES-3528 Console

Power xStack Console IP Master Link Act

2 4 6 8 10 12 14 16 18 20 22 24 25T 25F 26T 26F

Refresh Interval 10 secs Apply

System Up Time: 00 Days 00:58:53 Logged in as Administrator, Anonymous - 10.90.90.91 Logout

DES-3528

- Configuration
 - System Information
 - Serial Port Settings
 - IP Address
 - Port Configuration
 - Static ARP Settings
 - User Accounts
 - System Log Configuration
 - System Severity Settings
 - DHCP/BOOTP Relay
 - DHCP Auto Configuration Settings
 - MAC Address Aging Time
 - Web Settings
 - Telnet Settings
 - Password Encryption
 - Clepageing Settings
 - Firmware Information
 - Dual Configuration Settings
 - Ping Test
 - SNTP Settings
 - MAC Notification Settings
 - SNMP Settings
 - Time Range Settings
 - Single IP Management
 - Single IP Settings
 - Topology
 - Firmware Upgrade**
 - Configuration File Backup/Restore
 - Upload Log File
- L2 Features
- QoS
- Security
- ACL
- Monitoring

Firmware Upgrade

Server IP Address Path \ Filename Download

Total Entries: 0

Select All	ID	Port	MAC Address	Model Name	Firmware Version

DES-3528 - Microsoft Internet Explorer provided by D-Link Australia

http://10.90.90.90/www/main.html

DES-3528

D-Link Building Networks for People

DES-3528 Console

Power xStack Console IP Master Link Act

2 4 6 8 10 12 14 16 18 20 22 24 25T 25F 26T 26F

Refresh Interval 10 secs Apply

System Up Time: 00 Days 00:59:03 Logged in as Administrator, Anonymous - 10.90.90.91 Logout

DES-3528

- Configuration
 - System Information
 - Serial Port Settings
 - IP Address
 - Port Configuration
 - Static ARP Settings
 - User Accounts
 - System Log Configuration
 - System Severity Settings
 - DHCP/BOOTP Relay
 - DHCP Auto Configuration Settings
 - MAC Address Aging Time
 - Web Settings
 - Telnet Settings
 - Password Encryption
 - Clepageing Settings
 - Firmware Information
 - Dual Configuration Settings
 - Ping Test
 - SNTP Settings
 - MAC Notification Settings
 - SNMP Settings
 - Time Range Settings
 - Single IP Management
 - Single IP Settings
 - Topology
 - Firmware Upgrade
 - Configuration File Backup/Restore**
 - Upload Log File
- L2 Features
- QoS
- Security
- ACL
- Monitoring

Configuration File Backup/Restore

Server IP Address Path \ Filename Restore Backup

Total Entries: 0

Select All	ID	Port	MAC Address	Model Name	Firmware Version

DES-3528 - Microsoft Internet Explorer provided by D-Link Australia

http://10.90.90.90/www/main.html

DES-3528

D-Link
Building Networks for People

DES-3528 Console

Power xStack Console xStack Link Act

Refresh Interval: 10 secs

System Up Time: 00 Days 00:59:13 | Logged in as Administrator, Anonymous - 10.90.90.91 | Logout

Upload Log File

Server IP Address: Path \Filename:

Upload

Total Entries: 0

Select All	ID	Port	MAC Address	Model Name	Firmware Version
------------	----	------	-------------	------------	------------------

Configuration

- System Information
- Serial Port Settings
- IP Address
- Port Configuration
- Static ARP Settings
- User Accounts
- System Log Configuration
- System Severity Settings
- DHCP/BOOTP Relay
- DHCP Auto Configuration Settings
- MAC Address Aging Time
- Web Settings
- Telnet Settings
- Password Encryption
- Cipaging Settings
- Firmware Information
- Dual Configuration Settings
- Ping Test
- SNTP Settings
- MAC Notification Settings
- SNMP Settings
- Time Range Settings
- Single IP Management
- Single IP Settings
- Topology
- Firmware Upgrade
- Configuration File Backup/Restore
- Upload Log File

L2 Features

- QoS
- Security
- ACL
- Monitoring

DES-3528 - Microsoft Internet Explorer provided by D-Link Australia

http://10.90.90.90/www/main.html

DES-3528

D-Link
Building Networks for People

DES-3528 Console

Power xStack Console xStack Link Act

Refresh Interval: 10 secs

System Up Time: 00 Days 00:59:45 | Logged in as Administrator, Anonymous - 10.90.90.91 | Logout

Jumbo Frame

Jumbo Frame Disabled Enabled

Current Status: The maximum size of frame is 1536 bytes.

Apply

Configuration

- L2 Features
- 802.1Q VLAN
- QinQ
- 802.1v Protocol VLAN
- GVRP Settings
- GVRP Timer Settings
- Asymmetric VLAN Settings
- MAC-based VLAN Settings
- PVID Auto Assign Settings
- Port Trunking
- LACP Port Settings
- Traffic Segmentation
- IGMP Snooping
- MLD Snooping Settings
- Port Mirror
- Loopback Detection Settings
- Spanning Tree
- Forwarding & Filtering
- LLDP

QoS

- Security
- ACL
- Monitoring

DES-3528 - Microsoft Internet Explorer provided by D-Link Australia

http://10.90.90.90/www/main.html

DES-3528

D-Link Building Networks for People

DES-3528 Console

Power xStack Console RPO Master

2 4 6 8 10 12 14 16 18 20 22 24 25T 25F 26T 26F

Refresh Interval 10 secs

Apply

System Up Time: 00 Days 00:59:55 Logged in as Administrator, Anonymous - 10.90.90.91 Logout

DES-3528

- Configuration
 - L2 Features
 - Jumbo Frame**
 - 802.1Q VLAN
 - GenQ
 - 802.1v Protocol VLAN
 - GVRP Settings
 - GVRP Timer Settings
 - Asymmetric VLAN Settings
 - MAC-based VLAN Settings
 - PVID Auto Assign Settings
 - Port Trunking
 - LACP Port Settings
 - Traffic Segmentation
 - IGMP Snooping
 - MLD Snooping Settings
 - Port Mirror
 - Loopback Detection Settings
 - Spanning Tree
 - Forwarding & Filtering
 - LLDP
 - QoS
 - Security
 - ACL
 - Monitoring

Jumbo Frame

Jumbo Frame Disabled Enabled

Current Status: The maximum size of Jumbo frame is 9216 bytes.

Apply

DES-3528 - Microsoft Internet Explorer provided by D-Link Australia

http://10.90.90.90/www/main.html

DES-3528

D-Link Building Networks for People

DES-3528 Console

Power xStack Console RPO Master

2 4 6 8 10 12 14 16 18 20 22 24 25T 25F 26T 26F

Refresh Interval 10 secs

Apply

System Up Time: 00 Days 01:00:05 Logged in as Administrator, Anonymous - 10.90.90.91 Logout

DES-3528

- Configuration
 - L2 Features
 - Jumbo Frame
 - 802.1Q VLAN**
 - GenQ
 - 802.1v Protocol VLAN
 - GVRP Settings
 - GVRP Timer Settings
 - Asymmetric VLAN Settings
 - MAC-based VLAN Settings
 - PVID Auto Assign Settings
 - Port Trunking
 - LACP Port Settings
 - Traffic Segmentation
 - IGMP Snooping
 - MLD Snooping Settings
 - Port Mirror
 - Loopback Detection Settings
 - Spanning Tree
 - Forwarding & Filtering
 - LLDP
 - QoS
 - Security
 - ACL
 - Monitoring

802.1Q VLAN

VLAN List Add/Edit VLAN Find VLAN VLAN Batch Settings Total Entries: 1

VID	VLAN Name	Advertisement	Tagged Ports	Untagged Ports	Forbidden Ports
1	default	Enabled		1,2,3,4 5,6,7,8 9,10,11,12...	<input type="button" value="Edit"/> <input type="button" value="Delete"/>

<<Back Next>>

DES-3528 - Microsoft Internet Explorer provided by D-Link Australia
 http://10.90.90.90/www/main.html

D-Link
 Building Networks for People

DES-3528 Console

System Up Time: 00 Days 01:00:26 | Logged in as Administrator, Anonymous - 10.90.90.91 | Logout

802.1Q VLAN

VLAN List | Add/Edit VLAN | Find VLAN | VLAN Batch Settings | Total Entries: 1

VID: 1 | VLAN Name: default (Name should be less than 32 characters) | Apply

Advertisement: Enabled

Port	Select All	1	2	3	4	5	6	7	8	9	10	11	12	13	14	15	16	17	18	19	20	21	22	23	24	25	26	27	28
Tagged	All	<input checked="" type="radio"/>	<input checked="" type="radio"/>	<input checked="" type="radio"/>	<input checked="" type="radio"/>	<input checked="" type="radio"/>	<input checked="" type="radio"/>	<input checked="" type="radio"/>	<input checked="" type="radio"/>	<input checked="" type="radio"/>	<input checked="" type="radio"/>	<input checked="" type="radio"/>	<input checked="" type="radio"/>	<input checked="" type="radio"/>	<input checked="" type="radio"/>	<input checked="" type="radio"/>	<input checked="" type="radio"/>	<input checked="" type="radio"/>	<input checked="" type="radio"/>	<input checked="" type="radio"/>	<input checked="" type="radio"/>	<input checked="" type="radio"/>	<input checked="" type="radio"/>	<input checked="" type="radio"/>	<input checked="" type="radio"/>	<input checked="" type="radio"/>	<input checked="" type="radio"/>	<input checked="" type="radio"/>	
Untagged	All	<input type="radio"/>	<input type="radio"/>	<input type="radio"/>	<input type="radio"/>	<input type="radio"/>	<input type="radio"/>	<input type="radio"/>	<input type="radio"/>	<input type="radio"/>	<input type="radio"/>	<input type="radio"/>	<input type="radio"/>	<input type="radio"/>	<input type="radio"/>	<input type="radio"/>	<input type="radio"/>	<input type="radio"/>	<input type="radio"/>	<input type="radio"/>	<input type="radio"/>	<input type="radio"/>	<input type="radio"/>	<input type="radio"/>	<input type="radio"/>	<input type="radio"/>	<input type="radio"/>	<input type="radio"/>	
Forbidden	All	<input type="radio"/>	<input type="radio"/>	<input type="radio"/>	<input type="radio"/>	<input type="radio"/>	<input type="radio"/>	<input type="radio"/>	<input type="radio"/>	<input type="radio"/>	<input type="radio"/>	<input type="radio"/>	<input type="radio"/>	<input type="radio"/>	<input type="radio"/>	<input type="radio"/>	<input type="radio"/>	<input type="radio"/>	<input type="radio"/>	<input type="radio"/>	<input type="radio"/>	<input type="radio"/>	<input type="radio"/>	<input type="radio"/>	<input type="radio"/>	<input type="radio"/>	<input type="radio"/>	<input type="radio"/>	
Not Member	All	<input type="radio"/>	<input type="radio"/>	<input type="radio"/>	<input type="radio"/>	<input type="radio"/>	<input type="radio"/>	<input type="radio"/>	<input type="radio"/>	<input type="radio"/>	<input type="radio"/>	<input type="radio"/>	<input type="radio"/>	<input type="radio"/>	<input type="radio"/>	<input type="radio"/>	<input type="radio"/>	<input type="radio"/>	<input type="radio"/>	<input type="radio"/>	<input type="radio"/>	<input type="radio"/>	<input type="radio"/>	<input type="radio"/>	<input type="radio"/>	<input type="radio"/>	<input type="radio"/>	<input type="radio"/>	

Ports: 27, 28

Tagged:
 Untagged:
 Forbidden:
 Not Member:

Tagged Ports:
 Untagged Ports: 1,2,3,4,5,6,7,8,9,10,11,12,13,14,15,16,17,18,19,20,21,22,23,24,25,26,27,28
 Forbidden Ports:

DES-3528 - Microsoft Internet Explorer provided by D-Link Australia
 http://10.90.90.90/www/main.html

D-Link
 Building Networks for People

DES-3528 Console

System Up Time: 00 Days 01:00:37 | Logged in as Administrator, Anonymous - 10.90.90.91 | Logout

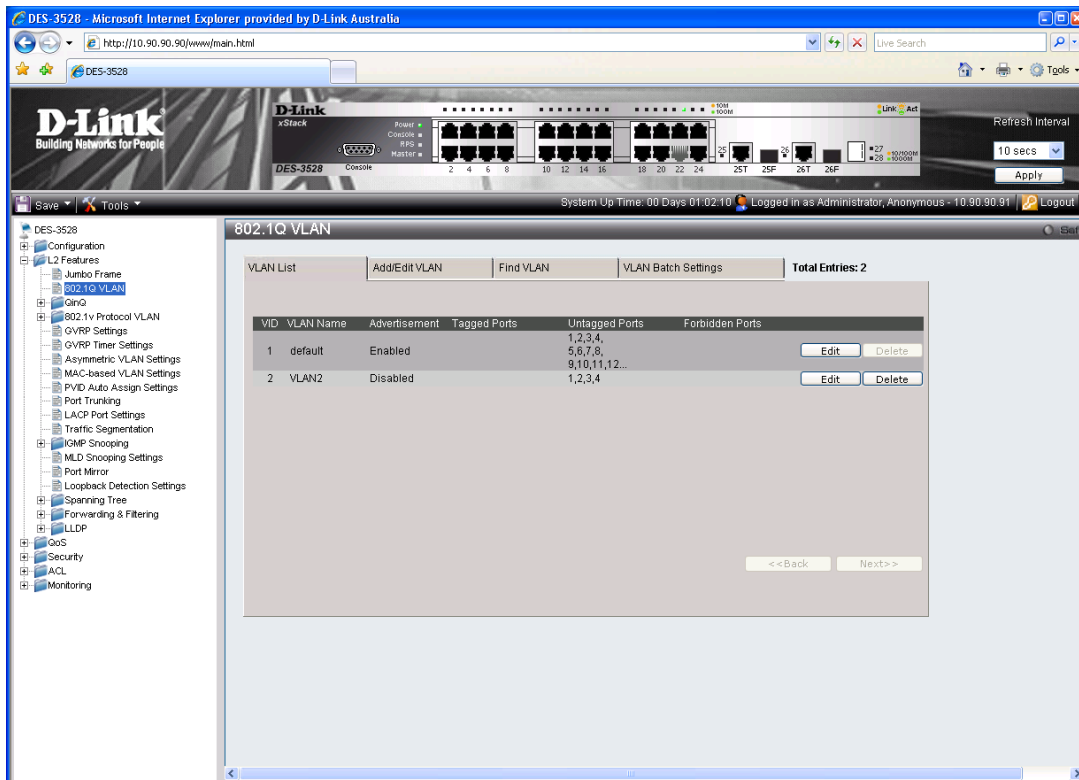
802.1Q VLAN

VLAN List | Add/Edit VLAN | Find VLAN | VLAN Batch Settings | Total Entries: 1

VID: 1 | Find



Asymmetric VLANs supported:



DES-3528 - Microsoft Internet Explorer provided by D-Link Australia
 http://10.90.90.90/www/main.html

D-Link
 Building Networks for People

DES-3528 Console

System Up Time: 00 Days 01:02:52 Logged in as Administrator, Anonymous - 10.90.90.91 Logout

QinQ Settings

QinQ Global Settings Disabled Enabled Apply

From Port: 01 To Port: 01 Role: NNI Missdrop: Disabled Outer TPID: 0x8100 Use Inner Priority: Disabled Apply

Port	Role	Missdrop	Outer TPID	Use Inner Priority
1	Normal	Disabled	0x8100	Disabled
2	Normal	Disabled	0x8100	Disabled
3	Normal	Disabled	0x8100	Disabled
4	Normal	Disabled	0x8100	Disabled
5	Normal	Disabled	0x8100	Disabled
6	Normal	Disabled	0x8100	Disabled
7	Normal	Disabled	0x8100	Disabled
8	Normal	Disabled	0x8100	Disabled
9	Normal	Disabled	0x8100	Disabled
10	Normal	Disabled	0x8100	Disabled
11	Normal	Disabled	0x8100	Disabled
12	Normal	Disabled	0x8100	Disabled
13	Normal	Disabled	0x8100	Disabled
14	Normal	Disabled	0x8100	Disabled
15	Normal	Disabled	0x8100	Disabled
16	Normal	Disabled	0x8100	Disabled
17	Normal	Disabled	0x8100	Disabled
18	Normal	Disabled	0x8100	Disabled
19	Normal	Disabled	0x8100	Disabled
20	Normal	Disabled	0x8100	Disabled
21	Normal	Disabled	0x8100	Disabled

DES-3528 - Microsoft Internet Explorer provided by D-Link Australia
 http://10.90.90.90/www/main.html

D-Link
 Building Networks for People

DES-3528 Console

System Up Time: 00 Days 01:03:03 Logged in as Administrator, Anonymous - 10.90.90.91 Logout

VLAN Translation Settings

From Port: 01 To Port: 01 CVID (1-4094): SPVID (1-4094): Priority (0-7): None Action: Add Apply

Total Entries: 0 Delete All

Port	CVID	SPVID	Action	Priority
------	------	-------	--------	----------

DES-3528 - Microsoft Internet Explorer provided by D-Link Australia
 http://10.90.90.90/www/main.html

D-Link
 Building Networks for People

DES-3528 Console

System Up Time: 00 Days 01:03:13 Logged in as Administrator, Anonymous - 10:90:90.91 Logout

802.1v Protocol Group Settings

Add PVLAN Group
 Group ID (1-16) Group Name

Note: Name should be less than 32 characters.

Add Protocol for PVLAN Group
 Group ID Group Name Protocol Protocol Value (0-FFFF)

Protocol: Ethernet II

Total Entries: 0

Group ID	Group Name	Frame Type	Protocol Value

DES-3528 - Microsoft Internet Explorer provided by D-Link Australia
 http://10.90.90.90/www/main.html

D-Link
 Building Networks for People

DES-3528 Console

System Up Time: 00 Days 01:03:24 Logged in as Administrator, Anonymous - 10:90:90.91 Logout

802.1v Protocol VLAN Settings

Add New Protocol VLAN
 Group ID Group Name VID (1-4094) VLAN Name 802.1p Priority

Port List (e.g.: 1-6) All Ports

Protocol VLAN Table
 Search Port List

Total Entries: 0

Port	VID	VLAN Name	Group ID	802.1p Priority

DES-3528 - Microsoft Internet Explorer provided by D-Link Australia

http://10.90.90.90/www/main.html

DES-3528

D-Link Building Networks for People

DES-3528 Console

System Up Time: 00 Days 01:03:45 Logged in as Administrator, Anonymous - 10.90.90.91 Logout

GVRP Settings

GVRP Global Settings Disabled Enabled Apply

From Port: 01 To Port: 01 PVID (1-4094): GVRP: Disabled Ingress Checking: Enabled Acceptable Frame Type: All Apply

Port	PVID	GVRP	Ingress Checking	Acceptable Frame Type
1	1	Disabled	Enabled	All
2	1	Disabled	Enabled	All
3	1	Disabled	Enabled	All
4	1	Disabled	Enabled	All
5	1	Disabled	Enabled	All
6	1	Disabled	Enabled	All
7	1	Disabled	Enabled	All
8	1	Disabled	Enabled	All
9	1	Disabled	Enabled	All
10	1	Disabled	Enabled	All
11	1	Disabled	Enabled	All
12	1	Disabled	Enabled	All
13	1	Disabled	Enabled	All
14	1	Disabled	Enabled	All
15	1	Disabled	Enabled	All
16	1	Disabled	Enabled	All
17	1	Disabled	Enabled	All
18	1	Disabled	Enabled	All
19	1	Disabled	Enabled	All
20	1	Disabled	Enabled	All
21	1	Disabled	Enabled	All
22	1	Disabled	Enabled	All
23	1	Disabled	Enabled	All
24	1	Disabled	Enabled	All
25	1	Disabled	Enabled	All

DES-3528 - Microsoft Internet Explorer provided by D-Link Australia

http://10.90.90.90/www/main.html

DES-3528

D-Link Building Networks for People

DES-3528 Console

System Up Time: 00 Days 01:03:56 Logged in as Administrator, Anonymous - 10.90.90.91 Logout

GVRP Timer Settings

GVRP Timer Settings

Join Time (100-1000000): ms

Leave Time (100-1000000): ms

Leave All Time (100-1000000): ms

Apply

Note:
 Leave Time should be greater than 2*Join Time.
 Leave All Time should be greater than Leave Time.

DES-3528 - Microsoft Internet Explorer provided by D-Link Australia

http://10.90.90.90/www/main.html

DES-3528

D-Link Building Networks for People

DES-3528 Console

Power xStack Console RPO Master

2 4 6 8 10 12 14 16 18 20 22 24 25T 25F 26T 26F

Refresh Interval 10 secs

Apply

System Up Time: 00 Days 01:04:06 Logged in as Administrator, Anonymous - 10.90.90.91 Logout

DES-3528

- Configuration
- L2 Features
 - Jumbo Frame
 - 802.1Q VLAN
 - GinQ
 - 802.1v Protocol VLAN
 - 802.1v Protocol Group Settings
 - 802.1v Protocol VLAN Settings
 - GVRP Settings
 - GVRP Timer Settings
 - Asymmetric VLAN Settings
 - MAC-based VLAN Settings
 - PVID Auto Assign Settings
 - Port Trunking
 - LACP Port Settings
 - Traffic Segmentation
 - IGMP Snooping
 - MLD Snooping Settings
 - Port Mirror
 - Loopback Detection Settings
- Spanning Tree
- Forwarding & Filtering
- LLDP
- QoS
- Security
- ACL
- Monitoring

Asymmetric VLAN Settings

Asymmetric VLAN State Disabled Enabled

Apply

DES-3528 - Microsoft Internet Explorer provided by D-Link Australia

http://10.90.90.90/www/main.html

DES-3528

D-Link Building Networks for People

DES-3528 Console

Power xStack Console RPO Master

2 4 6 8 10 12 14 16 18 20 22 24 25T 25F 26T 26F

Refresh Interval 10 secs

Apply

System Up Time: 00 Days 01:04:17 Logged in as Administrator, Anonymous - 10.90.90.91 Logout

DES-3528

- Configuration
- L2 Features
 - Jumbo Frame
 - 802.1Q VLAN
 - GinQ
 - 802.1v Protocol VLAN
 - 802.1v Protocol Group Settings
 - 802.1v Protocol VLAN Settings
 - GVRP Settings
 - GVRP Timer Settings
 - Asymmetric VLAN Settings
 - MAC-based VLAN Settings
 - PVID Auto Assign Settings
 - Port Trunking
 - LACP Port Settings
 - Traffic Segmentation
 - IGMP Snooping
 - MLD Snooping Settings
 - Port Mirror
 - Loopback Detection Settings
- Spanning Tree
- Forwarding & Filtering
- LLDP
- QoS
- Security
- ACL
- Monitoring

MAC-based VLAN Settings

MAC Address VLAN Name Find Add

Delete All

Total Entries: 0

MAC Address	VLAN ID	Status	Type
Total Entries: 0			

DES-3528 - Microsoft Internet Explorer provided by D-Link Australia

http://10.90.90.90/www/main.html

DES-3528

D-Link Building Networks for People

DES-3528 Console

Refresh Interval: 10 secs

System Up Time: 00 Days 01:04:38 Logged in as Administrator, Anonymous - 10.90.90.91 Logout

PVID Auto Assign Settings

PVID Auto Assign State: Disabled Enabled

Apply

Configuration

- L2 Features
 - Jumbo Frame
 - 802.1Q VLAN
 - GinQ
 - 802.1v Protocol VLAN
 - 802.1v Protocol Group Settings
 - 802.1v Protocol VLAN Settings
 - GVRP Settings
 - GVRP Timer Settings
 - Asymmetric VLAN Settings
 - MAC-based VLAN Settings
 - PVID Auto Assign Settings**
 - Port Trunking
 - LACP Port Settings
 - Traffic Segmentation
 - IGMP Snooping
 - MLD Snooping Settings
 - Port Mirror
 - Loopback Detection Settings
- Spanning Tree
- Forwarding & Filtering
- LLDP
- OoS
- Security
- ACL
- Monitoring

DES-3528 - Microsoft Internet Explorer provided by D-Link Australia

http://10.90.90.90/www/main.html

DES-3528

D-Link Building Networks for People

DES-3528 Console

Refresh Interval: 10 secs

System Up Time: 00 Days 01:05:08 Logged in as Administrator, Anonymous - 10.90.90.91 Logout

Port Trunking

Algorithm: Apply

Total Entries: 0

Group ID Type Member Ports Active Ports Status Flooding Ports

Edit Trunking Information Note: Maximum 8 ports in a static or LACP group

Group ID (1-8)	Type	Static	Master Port	State	Disabled	Clear All	Add
1		<input type="checkbox"/>	01		<input type="checkbox"/>		
2		<input type="checkbox"/>			<input type="checkbox"/>		
3		<input type="checkbox"/>			<input type="checkbox"/>		
4		<input type="checkbox"/>			<input type="checkbox"/>		
5		<input type="checkbox"/>			<input type="checkbox"/>		
6		<input type="checkbox"/>			<input type="checkbox"/>		
7		<input type="checkbox"/>			<input type="checkbox"/>		
8		<input type="checkbox"/>			<input type="checkbox"/>		
9		<input type="checkbox"/>			<input type="checkbox"/>		
10		<input type="checkbox"/>			<input type="checkbox"/>		
11		<input type="checkbox"/>			<input type="checkbox"/>		
12		<input type="checkbox"/>			<input type="checkbox"/>		
13		<input type="checkbox"/>			<input type="checkbox"/>		
14		<input type="checkbox"/>			<input type="checkbox"/>		
15		<input type="checkbox"/>			<input type="checkbox"/>		
16		<input type="checkbox"/>			<input type="checkbox"/>		
17		<input type="checkbox"/>			<input type="checkbox"/>		
18		<input type="checkbox"/>			<input type="checkbox"/>		
19		<input type="checkbox"/>			<input type="checkbox"/>		
20		<input type="checkbox"/>			<input type="checkbox"/>		
21		<input type="checkbox"/>			<input type="checkbox"/>		
22		<input type="checkbox"/>			<input type="checkbox"/>		
23		<input type="checkbox"/>			<input type="checkbox"/>		
24		<input type="checkbox"/>			<input type="checkbox"/>		
25		<input type="checkbox"/>			<input type="checkbox"/>		
26		<input type="checkbox"/>			<input type="checkbox"/>		
27		<input type="checkbox"/>			<input type="checkbox"/>		
28		<input type="checkbox"/>			<input type="checkbox"/>		

Ports

DES-3528 - Microsoft Internet Explorer provided by D-Link Australia
 http://10.90.90.90/www/main.html

D-Link
 Building Networks for People

DES-3528 Console

System Up Time: 00 Days 01:05:09 Logged in as Administrator, Anonymous - 10.90.90.91 Logout

Port Trunking

Algorithm: MAC Source

Total Entries: 0

Group ID	Type	Master Port	Member Ports	Active Ports	Status	Flooding Ports
Edit Trunking Information						
Group ID (1-8)	Type	Master Port	State			
1	Static	01	Disabled			
2	LACP					
3	Static					
4	Static					
5	Static					
6	Static					
7	Static					
8	Static					
9	Static					
10	Static					
11	Static					
12	Static					
13	Static					
14	Static					
15	Static					
16	Static					
17	Static					
18	Static					
19	Static					
20	Static					
21	Static					
22	Static					
23	Static					
24	Static					
25	Static					
26	Static					
27	Static					
28	Static					

Ports

DES-3528 - Microsoft Internet Explorer provided by D-Link Australia
 http://10.90.90.90/www/main.html

D-Link
 Building Networks for People

DES-3528 Console

System Up Time: 00 Days 01:05:20 Logged in as Administrator, Anonymous - 10.90.90.91 Logout

LACP Port Settings

From Port: 01 To Port: 01 Activity: Passive

Port	Activity
1	Passive
2	Passive
3	Passive
4	Passive
5	Passive
6	Passive
7	Passive
8	Passive
9	Passive
10	Passive
11	Passive
12	Passive
13	Passive
14	Passive
15	Passive
16	Passive
17	Passive
18	Passive
19	Passive
20	Passive
21	Passive
22	Passive
23	Passive
24	Passive
25	Passive
26	Passive

DES-3528 - Microsoft Internet Explorer provided by D-Link Australia

http://10.90.90.90/www/main.html

DES-3528

D-Link Building Networks for People

DES-3528 Console

System Up Time: 00 Days 01:05:41 Logged in as Administrator, Anonymous - 10.90.90.91 Logout

Traffic Segmentation

Traffic Segmentation Settings

From Port To Port

Forward PortList

Clear All Select All

1	<input checked="" type="checkbox"/>	2	<input checked="" type="checkbox"/>	3	<input checked="" type="checkbox"/>	4	<input checked="" type="checkbox"/>	5	<input checked="" type="checkbox"/>	6	<input checked="" type="checkbox"/>	7	<input checked="" type="checkbox"/>	8	<input checked="" type="checkbox"/>	9	<input checked="" type="checkbox"/>	10	<input checked="" type="checkbox"/>	11	<input checked="" type="checkbox"/>	12	<input checked="" type="checkbox"/>	13	<input checked="" type="checkbox"/>	14	<input checked="" type="checkbox"/>
15	<input checked="" type="checkbox"/>	16	<input checked="" type="checkbox"/>	17	<input checked="" type="checkbox"/>	18	<input checked="" type="checkbox"/>	19	<input checked="" type="checkbox"/>	20	<input checked="" type="checkbox"/>	21	<input checked="" type="checkbox"/>	22	<input checked="" type="checkbox"/>	23	<input checked="" type="checkbox"/>	24	<input checked="" type="checkbox"/>	25	<input checked="" type="checkbox"/>	26	<input checked="" type="checkbox"/>	27	<input checked="" type="checkbox"/>	28	<input checked="" type="checkbox"/>

Ports 1, 2, 3, 4, 5, 6, 7, 8, 9, 10, 11, 12, 13, 14, 15, 16, 17, 18, 19, 20, 21, 22, 23, 24, 25, 26, 27, 28

Apply

Port	Forward PortList
1	1, 2, 3, 4, 5, 6, 7, 8, 9, 10, 11, 12, 13, 14, 15, 16, 17, 18, 19, 20, 21, 22, 23, 24, 25, 26, 27, 28
2	1, 2, 3, 4, 5, 6, 7, 8, 9, 10, 11, 12, 13, 14, 15, 16, 17, 18, 19, 20, 21, 22, 23, 24, 25, 26, 27, 28
3	1, 2, 3, 4, 5, 6, 7, 8, 9, 10, 11, 12, 13, 14, 15, 16, 17, 18, 19, 20, 21, 22, 23, 24, 25, 26, 27, 28
4	1, 2, 3, 4, 5, 6, 7, 8, 9, 10, 11, 12, 13, 14, 15, 16, 17, 18, 19, 20, 21, 22, 23, 24, 25, 26, 27, 28
5	1, 2, 3, 4, 5, 6, 7, 8, 9, 10, 11, 12, 13, 14, 15, 16, 17, 18, 19, 20, 21, 22, 23, 24, 25, 26, 27, 28
6	1, 2, 3, 4, 5, 6, 7, 8, 9, 10, 11, 12, 13, 14, 15, 16, 17, 18, 19, 20, 21, 22, 23, 24, 25, 26, 27, 28
7	1, 2, 3, 4, 5, 6, 7, 8, 9, 10, 11, 12, 13, 14, 15, 16, 17, 18, 19, 20, 21, 22, 23, 24, 25, 26, 27, 28
8	1, 2, 3, 4, 5, 6, 7, 8, 9, 10, 11, 12, 13, 14, 15, 16, 17, 18, 19, 20, 21, 22, 23, 24, 25, 26, 27, 28
9	1, 2, 3, 4, 5, 6, 7, 8, 9, 10, 11, 12, 13, 14, 15, 16, 17, 18, 19, 20, 21, 22, 23, 24, 25, 26, 27, 28
10	1, 2, 3, 4, 5, 6, 7, 8, 9, 10, 11, 12, 13, 14, 15, 16, 17, 18, 19, 20, 21, 22, 23, 24, 25, 26, 27, 28
11	1, 2, 3, 4, 5, 6, 7, 8, 9, 10, 11, 12, 13, 14, 15, 16, 17, 18, 19, 20, 21, 22, 23, 24, 25, 26, 27, 28
12	1, 2, 3, 4, 5, 6, 7, 8, 9, 10, 11, 12, 13, 14, 15, 16, 17, 18, 19, 20, 21, 22, 23, 24, 25, 26, 27, 28
13	1, 2, 3, 4, 5, 6, 7, 8, 9, 10, 11, 12, 13, 14, 15, 16, 17, 18, 19, 20, 21, 22, 23, 24, 25, 26, 27, 28
14	1, 2, 3, 4, 5, 6, 7, 8, 9, 10, 11, 12, 13, 14, 15, 16, 17, 18, 19, 20, 21, 22, 23, 24, 25, 26, 27, 28
15	1, 2, 3, 4, 5, 6, 7, 8, 9, 10, 11, 12, 13, 14, 15, 16, 17, 18, 19, 20, 21, 22, 23, 24, 25, 26, 27, 28
16	1, 2, 3, 4, 5, 6, 7, 8, 9, 10, 11, 12, 13, 14, 15, 16, 17, 18, 19, 20, 21, 22, 23, 24, 25, 26, 27, 28
17	1, 2, 3, 4, 5, 6, 7, 8, 9, 10, 11, 12, 13, 14, 15, 16, 17, 18, 19, 20, 21, 22, 23, 24, 25, 26, 27, 28
18	1, 2, 3, 4, 5, 6, 7, 8, 9, 10, 11, 12, 13, 14, 15, 16, 17, 18, 19, 20, 21, 22, 23, 24, 25, 26, 27, 28
19	1, 2, 3, 4, 5, 6, 7, 8, 9, 10, 11, 12, 13, 14, 15, 16, 17, 18, 19, 20, 21, 22, 23, 24, 25, 26, 27, 28
20	1, 2, 3, 4, 5, 6, 7, 8, 9, 10, 11, 12, 13, 14, 15, 16, 17, 18, 19, 20, 21, 22, 23, 24, 25, 26, 27, 28

DES-3528 - Microsoft Internet Explorer provided by D-Link Australia

http://10.90.90.90/www/main.html

DES-3528

D-Link Building Networks for People

DES-3528 Console

System Up Time: 00 Days 01:05:51 Logged in as Administrator, Anonymous - 10.90.90.91 Logout

IGMP Snooping Settings

IGMP Snooping Global Settings

IGMP Snooping State Disabled Enabled

Apply

Total Entries: 1

VID	VLAN Name	Leave Timer (sec)	Host Timeout (sec)	Router Timeout (sec)	State
1	default	2	260	260	Disabled

<< Back Next >>

DES-3528 - Microsoft Internet Explorer provided by D-Link Australia
 http://10.90.90.90/www/main.html

D-Link
 Building Networks for People

DES-3528 Console

System Up Time: 00 Days 01:06:02 Logged in as Administrator, Anonymous - 10.90.90.91 Logout

IGMP Snooping Multicast VLAN Settings

ISM VLAN Global State: Disabled Enabled Apply

VLAN Name: VID (2-4094):

State: Replace Source IP:

Member Port (e.g.: 1-4,6): Source Port (e.g.: 1-4,6):

Tagged Member Port: Clear All Add

Total Entries: 0

VID	VLAN Name	Replace Source IP	State	Member Port	Tagged Port	Source Port

DES-3528 - Microsoft Internet Explorer provided by D-Link Australia
 http://10.90.90.90/www/main.html

D-Link
 Building Networks for People

DES-3528 Console

System Up Time: 00 Days 01:06:33 Logged in as Administrator, Anonymous - 10.90.90.91 Logout

IP Multicast Profile Settings

Profile ID: Profile Name: Add

Delete All

Total Entries: 0

Profile ID	Profile Name
1	

DES-3528 - Microsoft Internet Explorer provided by D-Link Australia
 http://10.90.90.90/www/main.html

D-Link
 Building Networks for People

DES-3528 Console

System Up Time: 00 Days 01:06:44 Logged in as Administrator, Anonymous - 10.90.90.91 Logout

Limited Multicast Range Settings

From Port: 01 To Port: 01 Access: Permit [Apply]

From Port: 01 To Port: 01 Profile ID: 1 Access: Permit [Add] [Delete]

Port	Profile ID	Access State
1		Permit
2		Permit
3		Permit
4		Permit
5		Permit
6		Permit
7		Permit
8		Permit
9		Permit
10		Permit
11		Permit
12		Permit
13		Permit
14		Permit
15		Permit
16		Permit
17		Permit
18		Permit
19		Permit
20		Permit
21		Permit
22		Permit
23		Permit
24		Permit

DES-3528 - Microsoft Internet Explorer provided by D-Link Australia
 http://10.90.90.90/www/main.html

D-Link
 Building Networks for People

DES-3528 Console

System Up Time: 00 Days 01:06:54 Logged in as Administrator, Anonymous - 10.90.90.91 Logout

Multicast Filtering Mode

VLAN Name: [] Multicast Filter Mode: Forward All Groups [Apply]

VID List: [] [Search] [View All]

Total Entries: 1

VLAN Name	Multicast Filter Mode
default	Forward Unregistered Groups

<< Back Next >>

DES-3528 - Microsoft Internet Explorer provided by D-Link Australia
 http://10.90.90.90/www/main.html

D-Link
 Building Networks for People

DES-3528 Console

System Up Time: 00 Days 01:07:05 | Logged in as Administrator, Anonymous - 10.90.90.91 | Logout

Max Multicast Group Settings

From Port: 01 | To Port: 01 | Max Group (1-256): 1 Infinite

Port	Max Multicast Group
1	Infinite
2	Infinite
3	Infinite
4	Infinite
5	Infinite
6	Infinite
7	Infinite
8	Infinite
9	Infinite
10	Infinite
11	Infinite
12	Infinite
13	Infinite
14	Infinite
15	Infinite
16	Infinite
17	Infinite
18	Infinite
19	Infinite
20	Infinite
21	Infinite
22	Infinite
23	Infinite
24	Infinite
25	Infinite
26	Infinite
27	Infinite

DES-3528 - Microsoft Internet Explorer provided by D-Link Australia
 http://10.90.90.90/www/main.html

D-Link
 Building Networks for People

DES-3528 Console

System Up Time: 00 Days 01:07:16 | Logged in as Administrator, Anonymous - 10.90.90.91 | Logout

MLD Snooping Settings

MLD Snooping Global Settings
 MLD Snooping State: Disabled Enabled

VLAN Total Entries: 1

VID	VLAN Name	Done Timer (sec)	Node Timeout (sec)	Router Timeout (sec)	State
1	default	2	260	260	Disabled

<< Back | Next >>

DES-3528 - Microsoft Internet Explorer provided by D-Link Australia
 http://10.90.90.90/www/main.html

D-Link
 Building Networks for People

DES-3528 Console

System Up Time: 00 Days 01:07:26 Logged in as Administrator, Anonymous - 10.90.90.91 Logout

Port Mirror

Target Port Settings
 State: Disabled Enabled
 Target Port: 1
 Source Port: Ports

Source Port Settings

Sniffer Mode	1	2	3	4	5	6	7	8	9	10	11	12	13	14	15	16	17	18	19	20	21	22	23	24	25	26
Tx	<input type="radio"/>	<input type="radio"/>	<input type="radio"/>	<input type="radio"/>	<input type="radio"/>	<input type="radio"/>	<input type="radio"/>	<input type="radio"/>	<input type="radio"/>	<input type="radio"/>	<input type="radio"/>	<input type="radio"/>	<input type="radio"/>	<input type="radio"/>	<input type="radio"/>	<input type="radio"/>	<input type="radio"/>	<input type="radio"/>	<input type="radio"/>	<input type="radio"/>	<input type="radio"/>	<input type="radio"/>	<input type="radio"/>	<input type="radio"/>	<input type="radio"/>	<input type="radio"/>
Rx	<input type="radio"/>	<input type="radio"/>	<input type="radio"/>	<input type="radio"/>	<input type="radio"/>	<input type="radio"/>	<input type="radio"/>	<input type="radio"/>	<input type="radio"/>	<input type="radio"/>	<input type="radio"/>	<input type="radio"/>	<input type="radio"/>	<input type="radio"/>	<input type="radio"/>	<input type="radio"/>	<input type="radio"/>	<input type="radio"/>	<input type="radio"/>	<input type="radio"/>	<input type="radio"/>	<input type="radio"/>	<input type="radio"/>	<input type="radio"/>	<input type="radio"/>	<input type="radio"/>
Both	<input type="radio"/>	<input type="radio"/>	<input type="radio"/>	<input type="radio"/>	<input type="radio"/>	<input type="radio"/>	<input type="radio"/>	<input type="radio"/>	<input type="radio"/>	<input type="radio"/>	<input type="radio"/>	<input type="radio"/>	<input type="radio"/>	<input type="radio"/>	<input type="radio"/>	<input type="radio"/>	<input type="radio"/>	<input type="radio"/>	<input type="radio"/>	<input type="radio"/>	<input type="radio"/>	<input type="radio"/>	<input type="radio"/>	<input type="radio"/>	<input type="radio"/>	<input type="radio"/>
None	<input type="radio"/>	<input type="radio"/>	<input type="radio"/>	<input type="radio"/>	<input type="radio"/>	<input type="radio"/>	<input type="radio"/>	<input type="radio"/>	<input type="radio"/>	<input type="radio"/>	<input type="radio"/>	<input type="radio"/>	<input type="radio"/>	<input type="radio"/>	<input type="radio"/>	<input type="radio"/>	<input type="radio"/>	<input type="radio"/>	<input type="radio"/>	<input type="radio"/>	<input type="radio"/>	<input type="radio"/>	<input type="radio"/>	<input type="radio"/>	<input type="radio"/>	<input type="radio"/>

Apply

DES-3528 - Microsoft Internet Explorer provided by D-Link Australia
 http://10.90.90.90/www/main.html

D-Link
 Building Networks for People

DES-3528 Console

System Up Time: 00 Days 01:07:36 Logged in as Administrator, Anonymous - 10.90.90.91 Logout

Loopback Detection Settings

Loopback Detection Global Settings
 State: Disabled Enabled Interval (1-32767) 10 sec
 Mode: Port Based Recover Time (0 or 60-1000000) 60 sec

From Port: 01 To Port: 01 State: Disabled

Port	Loopdetect Detection State	Loop Status
1	Disabled	Normal
2	Disabled	Normal
3	Disabled	Normal
4	Disabled	Normal
5	Disabled	Normal
6	Disabled	Normal
7	Disabled	Normal
8	Disabled	Normal
9	Disabled	Normal
10	Disabled	Normal
11	Disabled	Normal
12	Disabled	Normal
13	Disabled	Normal
14	Disabled	Normal
15	Disabled	Normal
16	Disabled	Normal
17	Disabled	Normal
18	Disabled	Normal
19	Disabled	Normal
20	Disabled	Normal

Apply

DES-3528 - Microsoft Internet Explorer provided by D-Link Australia

http://10.90.90.90/www/main.html

DES-3528

D-Link Building Networks for People

DES-3528 Console

System Up Time: 00 Days 01:08:50 Logged in as Administrator, Anonymous - 10.90.90.91 Logout

Save Tools

DES-3528

- Configuration
 - L2 Features
 - Jumbo Frame
 - 802.1Q VLAN
 - QinQ
 - 802.1v Protocol VLAN
 - GVRP Settings
 - GVRP Timer Settings
 - Asymmetric VLAN Settings
 - MAC-based VLAN Settings
 - PVID Auto Assign Settings
 - Port Trunking
 - LACP Port Settings
 - Traffic Segmentation
 - IGMP Snooping
 - MLD Snooping Settings
 - Port Mirror
 - Loopback Detection Settings
 - Spanning Tree
 - STP Bridge Global Settings
 - STP Port Settings
 - MST Configuration Identification
 - STP Instance Settings
 - MSTP Port Information
 - Forwarding & Filtering
 - LLDP
 - QoS
 - Security
 - ACL
 - Monitoring

STP Bridge Global Settings

STP State Disabled Enabled Apply

STP Version: RSTP

Forwarding BPDU: STP

Bridge Max Age (6-40): MSTP sec

Bridge Hello Time (1-2): 2 sec

Bridge Forward Delay (4-30): 15 sec

Tx Hold Count (1-10): 6 times

Max Hops (1-20): 20 times Apply

DES-3528 - Microsoft Internet Explorer provided by D-Link Australia

http://10.90.90.90/www/main.html

DES-3528

D-Link Building Networks for People

DES-3528 Console

System Up Time: 00 Days 01:09:00 Logged in as Administrator, Anonymous - 10.90.90.91 Logout

Save Tools

DES-3528

- Configuration
 - L2 Features
 - Jumbo Frame
 - 802.1Q VLAN
 - QinQ
 - 802.1v Protocol VLAN
 - GVRP Settings
 - GVRP Timer Settings
 - Asymmetric VLAN Settings
 - MAC-based VLAN Settings
 - PVID Auto Assign Settings
 - Port Trunking
 - LACP Port Settings
 - Traffic Segmentation
 - IGMP Snooping
 - MLD Snooping Settings
 - Port Mirror
 - Loopback Detection Settings
 - Spanning Tree
 - STP Bridge Global Settings
 - STP Port Settings
 - MST Configuration Identification
 - STP Instance Settings
 - MSTP Port Information
 - Forwarding & Filtering
 - LLDP
 - QoS
 - Security
 - ACL
 - Monitoring

STP Port Settings

From Port: 01 To Port: 01

External Cost (0=Auto): 0 Migrate: Yes Edge: Auto

P2P: Auto Port STP: Enabled Restricted Role: False


Restricted TCN: False Forward BPDU: Enabled Apply

Port	External Cost	Edge	P2P	Port STP	Restricted Role	Restricted TCN	Forward BPDU	Hello Time
1	Auto/200000	False/False	Auto/True	Enabled	False	False	Disabled	2/2
2	Auto/200000	False/False	Auto/True	Enabled	False	False	Disabled	2/2
3	Auto/200000	False/False	Auto/True	Enabled	False	False	Disabled	2/2
4	Auto/200000	False/False	Auto/True	Enabled	False	False	Disabled	2/2
5	Auto/200000	False/False	Auto/True	Enabled	False	False	Disabled	2/2
6	Auto/200000	False/False	Auto/True	Enabled	False	False	Disabled	2/2
7	Auto/200000	False/False	Auto/True	Enabled	False	False	Disabled	2/2
8	Auto/200000	False/False	Auto/True	Enabled	False	False	Disabled	2/2
9	Auto/200000	False/False	Auto/True	Enabled	False	False	Disabled	2/2
10	Auto/200000	False/False	Auto/True	Enabled	False	False	Disabled	2/2
11	Auto/200000	False/False	Auto/True	Enabled	False	False	Disabled	2/2
12	Auto/200000	False/False	Auto/True	Enabled	False	False	Disabled	2/2
13	Auto/200000	False/False	Auto/True	Enabled	False	False	Disabled	2/2

Port field: N=Trunk Master; T=Trunk Member

External Cost, Edge, P2P and Hello Time fields:
Value1/Value2 (Value1=Configured value, Value2=Actual value)

DES-3528 - Microsoft Internet Explorer provided by D-Link Australia
 http://10.90.90.90/www/main.html



System Up Time: 00 Days 01:09:11 | Logged in as Administrator, Anonymous - 10.90.90.91 | Logout

MST Configuration Identification

MST Configuration Identification Settings

Configuration Name:

Revision Level (0-65535):

Instance ID Settings

MSTI ID (1-15):


Type:

VID List (1-4094):

Total Entries: 1

MSTI ID	VID List
CIST	1-4094

DES-3528 - Microsoft Internet Explorer provided by D-Link Australia
 http://10.90.90.90/www/main.html



System Up Time: 00 Days 01:09:11 | Logged in as Administrator, Anonymous - 10.90.90.91 | Logout

STP Instance Settings

STP Priority Settings

MSTI ID: Priority:

Total Entries: 1

Instance Type	Instance Status	Instance Priority
CIST	Disabled	32768(Bridge Priority : 32768, SYS ID Ext : 0)

STP Instance Operational Status

MSTP ID	--	Designated Root Bridge
External Root Cost	--	Regional Root Bridge
Internal Root Cost	--	Designated Bridge
Root Port	--	Max Age
Forward Delay	--	Remaining Hops
Last Topology Change	--	Topology Changes Count

DES-3528 - Microsoft Internet Explorer provided by D-Link Australia
 http://10.90.90.90/www/main.html

D-Link
 Building Networks for People

DES-3528 Console

System Up Time: 00 Days 01:09:21 Logged in as Administrator, Anonymous - 10.90.90.91 Logout

MSTP Port Information

Port: 01 Find

MSTP Port Setting

Instance ID: Internal Path Cost (1-200000000): Priority: 0 Apply

Port 1 Settings

MSTI	Designated Bridge	Internal Path Cost	Priority	Status	Role	Edit
0	N/A	200000	128	Disabled	Disabled	Edit

DES-3528 - Microsoft Internet Explorer provided by D-Link Australia
 http://10.90.90.90/www/main.html

D-Link
 Building Networks for People

DES-3528 Console

System Up Time: 00 Days 01:09:32 Logged in as Administrator, Anonymous - 10.90.90.91 Logout

Unicast Forwarding

Unicast Forwarding Settings

VLAN ID (1-4094): MAC Address: 00-00-00-00-00-00 Port: 01 Apply

Total Entries: 0

VLAN ID	VLAN Name	MAC Address	Port
---------	-----------	-------------	------

DES-3528 - Microsoft Internet Explorer provided by D-Link Australia
 http://10.90.90.90/www/main.html

D-Link Building Networks for People

DES-3528 Console

System Up Time: 00 Days 01:09:42 Logged in as Administrator, Anonymous - 10.90.90.91 Logout

Multicast Forwarding

Multicast Forwarding Settings

VID:

Multicast MAC Address:

Port	Select All	1	2	3	4	5	6	7	8	9	10	11	12	13	14	15	16	17	18	19	20	21	22	23	24	25	26	27	28
None	All	<input type="radio"/>	<input type="radio"/>	<input type="radio"/>	<input type="radio"/>	<input type="radio"/>	<input type="radio"/>	<input type="radio"/>	<input type="radio"/>	<input type="radio"/>	<input type="radio"/>	<input type="radio"/>	<input type="radio"/>	<input type="radio"/>	<input type="radio"/>	<input type="radio"/>	<input type="radio"/>	<input type="radio"/>	<input type="radio"/>	<input type="radio"/>	<input type="radio"/>	<input type="radio"/>	<input type="radio"/>	<input type="radio"/>	<input type="radio"/>	<input type="radio"/>	<input type="radio"/>	<input type="radio"/>	
Egress	All	<input type="radio"/>	<input type="radio"/>	<input type="radio"/>	<input type="radio"/>	<input type="radio"/>	<input type="radio"/>	<input type="radio"/>	<input type="radio"/>	<input type="radio"/>	<input type="radio"/>	<input type="radio"/>	<input type="radio"/>	<input type="radio"/>	<input type="radio"/>	<input type="radio"/>	<input type="radio"/>	<input type="radio"/>	<input type="radio"/>	<input type="radio"/>	<input type="radio"/>	<input type="radio"/>	<input type="radio"/>	<input type="radio"/>	<input type="radio"/>	<input type="radio"/>	<input type="radio"/>	<input type="radio"/>	

Egress Ports

Total Entries: 0

VID	MAC Address	Mode	Egress Ports

DES-3528 - Microsoft Internet Explorer provided by D-Link Australia
 http://10.90.90.90/www/main.html

D-Link Building Networks for People

DES-3528 Console

System Up Time: 00 Days 01:09:53 Logged in as Administrator, Anonymous - 10.90.90.91 Logout

LLDP Global Settings

LLDP State: Disabled Enabled

LLDP Forward Message: Disabled Enabled

Message Tx Interval (5-32768): sec

Message Tx Hold Multiplier (2-10):

LLDP Reinit Delay (1-10): sec

LLDP Tx Delay (1-8192): sec

LLDP Notification Interval (5-3600): sec

LLDP System Information

Chassis ID Subtype	MAC Address
Chassis ID	00-1E-58-50-1C-F0
System Name	
System Description	Fast Ethernet Switch
System Capabilities	Repeater, Bridge,

DES-3528 - Microsoft Internet Explorer provided by D-Link Australia
 http://10.90.90.90/www/main.html

D-Link
 Building Networks for People

DES-3528 Console

System Up Time: 00 Days 01:10:03 Logged in as Administrator, Anonymous - 10.90.90.91 Logout

LLDP Port Settings

From Port: 01 To Port: 01 Notification: Disabled Admin Status: Tx and Rx
 IPv4 Address: Action: Disabled

Note: The IPv4 Address should be the Switch's Address.

Port ID	Notification	Admin Status	Subtype	Address
1	Disabled	Tx and Rx	IPv4	
2	Disabled	Tx and Rx	IPv4	
3	Disabled	Tx and Rx	IPv4	
4	Disabled	Tx and Rx	IPv4	
5	Disabled	Tx and Rx	IPv4	
6	Disabled	Tx and Rx	IPv4	
7	Disabled	Tx and Rx	IPv4	
8	Disabled	Tx and Rx	IPv4	
9	Disabled	Tx and Rx	IPv4	
10	Disabled	Tx and Rx	IPv4	
11	Disabled	Tx and Rx	IPv4	
12	Disabled	Tx and Rx	IPv4	
13	Disabled	Tx and Rx	IPv4	
14	Disabled	Tx and Rx	IPv4	
15	Disabled	Tx and Rx	IPv4	
16	Disabled	Tx and Rx	IPv4	
17	Disabled	Tx and Rx	IPv4	
18	Disabled	Tx and Rx	IPv4	
19	Disabled	Tx and Rx	IPv4	
20	Disabled	Tx and Rx	IPv4	
21	Disabled	Tx and Rx	IPv4	
22	Disabled	Tx and Rx	IPv4	

DES-3528 - Microsoft Internet Explorer provided by D-Link Australia
 http://10.90.90.90/www/main.html

D-Link
 Building Networks for People

DES-3528 Console

System Up Time: 00 Days 01:10:14 Logged in as Administrator, Anonymous - 10.90.90.91 Logout

LLDP Management Address List

IPv4 Address: Find

Subtype	IPv4 Address	IF Type	OID	Advertising Ports
---------	--------------	---------	-----	-------------------

DES-3528 - Microsoft Internet Explorer provided by D-Link Australia
 http://10.90.90.90/www/main.html

D-Link Building Networks for People

DES-3528 Console

System Up Time: 00 Days 01:10:45 | Logged in as Administrator, Anonymous - 10.90.90.91 | Logout

LLDP Do3 TLVs Settings

From Port: 01 To Port: 01

MAC/PHY Configuration Status: Disabled | Link Aggregation: Disabled

Maximum Frame Size: Disabled

Apply

Port	MAC/PHY Configuration Status	Link Aggregation	Maximum Frame Size
1	Disabled	Disabled	Disabled
2	Disabled	Disabled	Disabled
3	Disabled	Disabled	Disabled
4	Disabled	Disabled	Disabled
5	Disabled	Disabled	Disabled
6	Disabled	Disabled	Disabled
7	Disabled	Disabled	Disabled
8	Disabled	Disabled	Disabled
9	Disabled	Disabled	Disabled
10	Disabled	Disabled	Disabled
11	Disabled	Disabled	Disabled
12	Disabled	Disabled	Disabled
13	Disabled	Disabled	Disabled
14	Disabled	Disabled	Disabled
15	Disabled	Disabled	Disabled
16	Disabled	Disabled	Disabled
17	Disabled	Disabled	Disabled
18	Disabled	Disabled	Disabled
19	Disabled	Disabled	Disabled
20	Disabled	Disabled	Disabled
21	Disabled	Disabled	Disabled
22	Disabled	Disabled	Disabled
23	Disabled	Disabled	Disabled

DES-3528 - Microsoft Internet Explorer provided by D-Link Australia
 http://10.90.90.90/www/main.html

D-Link Building Networks for People

DES-3528 Console

System Up Time: 00 Days 01:10:56 | Logged in as Administrator, Anonymous - 10.90.90.91 | Logout

LLDP Statistics System

LLDP Statistics

Last Change Time	925
Number of Table Insert	0
Number of Table Delete	0
Number of Table Drop	0
Number of Table Ageout	0

Port: 01 Find

LLDP Statistics Ports

Total Tx Frames	0
Total Discarded Rx Frames	0
Rx Errors Frames	0
Total Rx Frames	0
Total Discarded Rx TLVs	0
Total Unrecognized Rx TLVs	0
Total Aged out Neighbor Information	0

DES-3528 - Microsoft Internet Explorer provided by D-Link Australia

http://10.90.90.90/www/main.html

DES-3528

D-Link Building Networks for People

DES-3528 Console

Power xStack Console Prio Master

2 4 6 8 10 12 14 16 18 20 22 24 25T 25F 26T 26F

Refresh Interval: 10 secs

Apply

System Up Time: 00 Days 01:11:06 Logged in as Administrator, Anonymous - 10.90.90.91 Logout

DES-3528

- Configuration
- L2 Features
 - Jumbo Frame
 - 802.1Q VLAN
 - QinQ
 - 802.1v Protocol VLAN
 - GVRP Settings
 - GVRP Timer Settings
 - Asymmetric VLAN Settings
 - MAC-based VLAN Settings
 - PVID Auto Assign Settings
 - Port Trunking
 - LACP Port Settings
 - Traffic Segmentation
 - IGMP Snooping
 - MLD Snooping Settings
 - Port Mirror
 - Loopback Detection Settings
 - Spanning Tree
 - Forwarding & Filtering
 - LLD
 - LLD Global Settings
 - LLD Port Settings
 - LLD Management Address List
 - LLD Basic TLVs Settings
 - LLD Dot1 TLVs Settings
 - LLD Dot3 TLVs Settings
 - LLD Statistics System
 - LLD Local Port Information
 - LLD Remote Port Information
- QoS
- Security
- ACL
- Monitoring

LLDP Local Port Information

LLDP Local Port Brief Table

Show Normal

Port	Port ID Subtype	Port ID	Port Description
1	Local	1/1	RMON Port 1 on Unit 1
2	Local	1/2	RMON Port 2 on Unit 1
3	Local	1/3	RMON Port 3 on Unit 1
4	Local	1/4	RMON Port 4 on Unit 1
5	Local	1/5	RMON Port 5 on Unit 1
6	Local	1/6	RMON Port 6 on Unit 1
7	Local	1/7	RMON Port 7 on Unit 1
8	Local	1/8	RMON Port 8 on Unit 1
9	Local	1/9	RMON Port 9 on Unit 1
10	Local	1/10	RMON Port 10 on Unit 1
11	Local	1/11	RMON Port 11 on Unit 1
12	Local	1/12	RMON Port 12 on Unit 1
13	Local	1/13	RMON Port 13 on Unit 1
14	Local	1/14	RMON Port 14 on Unit 1
15	Local	1/15	RMON Port 15 on Unit 1
16	Local	1/16	RMON Port 16 on Unit 1
17	Local	1/17	RMON Port 17 on Unit 1
18	Local	1/18	RMON Port 18 on Unit 1
19	Local	1/19	RMON Port 19 on Unit 1
20	Local	1/20	RMON Port 20 on Unit 1
21	Local	1/21	RMON Port 21 on Unit 1
22	Local	1/22	RMON Port 22 on Unit 1
23	Local	1/23	RMON Port 23 on Unit 1
24	Local	1/24	RMON Port 24 on Unit 1
25	Local	1/25	RMON Port 25 on Unit 1
26	Local	1/26	RMON Port 26 on Unit 1
27	Local	1/27	RMON Port 27 on Unit 1

DES-3528 - Microsoft Internet Explorer provided by D-Link Australia

http://10.90.90.90/www/main.html

DES-3528

D-Link Building Networks for People

DES-3528 Console

Power xStack Console Prio Master

2 4 6 8 10 12 14 16 18 20 22 24 25T 25F 26T 26F

Refresh Interval: 10 secs

Apply

System Up Time: 00 Days 01:11:17 Logged in as Administrator, Anonymous - 10.90.90.91 Logout

DES-3528

- Configuration
- L2 Features
 - Jumbo Frame
 - 802.1Q VLAN
 - QinQ
 - 802.1v Protocol VLAN
 - GVRP Settings
 - GVRP Timer Settings
 - Asymmetric VLAN Settings
 - MAC-based VLAN Settings
 - PVID Auto Assign Settings
 - Port Trunking
 - LACP Port Settings
 - Traffic Segmentation
 - IGMP Snooping
 - MLD Snooping Settings
 - Port Mirror
 - Loopback Detection Settings
 - Spanning Tree
 - Forwarding & Filtering
 - LLD
 - LLD Global Settings
 - LLD Port Settings
 - LLD Management Address List
 - LLD Basic TLVs Settings
 - LLD Dot1 TLVs Settings
 - LLD Dot3 TLVs Settings
 - LLD Statistics System
 - LLD Local Port Information
 - LLD Remote Port Information
- QoS
- Security
- ACL
- Monitoring

LLDP Remote Port Information

LLDP Remote Port Brief Table

Port: 01 Find Show Normal

Remote Entries Count : 0

Entity	Chassis ID Subtype	Chassis ID	Port ID Subtype	Port ID	Port Description
--------	--------------------	------------	-----------------	---------	------------------

DES-3528 - Microsoft Internet Explorer provided by D-Link Australia

http://10.90.90.90/www/main.html

DES-3528

D-Link Building Networks for People

DES-3528 Console

Refresh Interval: 10 secs

System Up Time: 00 Days 01:11:27 Logged in as Administrator, Anonymous - 10.90.90.91 Logout

HOL Blocking Prevention

HOL Blocking Prevention State: Disabled Enabled

Apply

DES-3528 Configuration

- L2 Features
 - Jumbo Frame
 - 802.1Q VLAN
 - QinQ
 - 802.1v Protocol VLAN
 - GVRP Settings
 - GVRP Timer Settings
 - Asymmetric VLAN Settings
 - MAC-based VLAN Settings
 - PVID Auto Assign Settings
 - Port Trunking
 - LACP Port Settings
 - Traffic Segmentation
 - IGMP Snooping
 - MLD Snooping Settings
 - Port Mirror
 - Loopback Detection Settings
 - Spanning Tree
 - Forwarding & Filtering
 - LLDP
- QoS
 - HOL Blocking Prevention**
 - Bandwidth Control
 - Traffic Control
 - 802.1p Default Priority
 - 802.1p User Priority
 - QoS Scheduling Mechanism
- Security
- ACL
- Monitoring

DES-3528 - Microsoft Internet Explorer provided by D-Link Australia

http://10.90.90.90/www/main.html

DES-3528

D-Link Building Networks for People

DES-3528 Console

Refresh Interval: 10 secs

System Up Time: 00 Days 01:11:59 Logged in as Administrator, Anonymous - 10.90.90.91 Logout

Bandwidth Control

From Port: 01 To Port: 01 Type: Rx No Limit Rate: (64-1024000) kbit/sec

Apply

Port	Rx Rate (kbit/sec)	Tx Rate (kbit/sec)	Effective RX (kbit/sec)	Effective TX (kbit/sec)
1	No Limit	No Limit	No Limit	No Limit
2	No Limit	No Limit	No Limit	No Limit
3	No Limit	No Limit	No Limit	No Limit
4	No Limit	No Limit	No Limit	No Limit
5	No Limit	No Limit	No Limit	No Limit
6	No Limit	No Limit	No Limit	No Limit
7	No Limit	No Limit	No Limit	No Limit
8	No Limit	No Limit	No Limit	No Limit
9	No Limit	No Limit	No Limit	No Limit
10	No Limit	No Limit	No Limit	No Limit
11	No Limit	No Limit	No Limit	No Limit
12	No Limit	No Limit	No Limit	No Limit
13	No Limit	No Limit	No Limit	No Limit
14	No Limit	No Limit	No Limit	No Limit
15	No Limit	No Limit	No Limit	No Limit
16	No Limit	No Limit	No Limit	No Limit
17	No Limit	No Limit	No Limit	No Limit
18	No Limit	No Limit	No Limit	No Limit
19	No Limit	No Limit	No Limit	No Limit
20	No Limit	No Limit	No Limit	No Limit
21	No Limit	No Limit	No Limit	No Limit
22	No Limit	No Limit	No Limit	No Limit

The Effective Tx/Rx Rate means the actual bandwidth of the switch port, if it's not the same as the configured rate, which means the bandwidth may be assigned by higher priority resource such as RADIUS server.

DES-3528 Configuration

- L2 Features
 - Jumbo Frame
 - 802.1Q VLAN
 - QinQ
 - 802.1v Protocol VLAN
 - GVRP Settings
 - GVRP Timer Settings
 - Asymmetric VLAN Settings
 - MAC-based VLAN Settings
 - PVID Auto Assign Settings
 - Port Trunking
 - LACP Port Settings
 - Traffic Segmentation
 - IGMP Snooping
 - MLD Snooping Settings
 - Port Mirror
 - Loopback Detection Settings
 - Spanning Tree
 - Forwarding & Filtering
 - LLDP
- QoS
 - HOL Blocking Prevention
 - Bandwidth Control**
 - Traffic Control
 - 802.1p Default Priority
 - 802.1p User Priority
 - QoS Scheduling Mechanism
- Security
- ACL
- Monitoring

DES-3528 - Microsoft Internet Explorer provided by D-Link Australia
 http://10.90.90.90/www/main.html

D-Link
 Building Networks for People

DES-3528 Console

System Up Time: 00 Days 01:12:51 | Logged in as Administrator, Anonymous - 10.90.90.91 | Logout

Traffic Control

Traffic Control Settings

From Port: 01 | To Port: 01

Action: Drop | Count Down (0 or 5-30): 0 min

Time Interval (5-30): 5 sec | Threshold (0-255000): 131072 pkts

Storm Control Type: None

Traffic Trap Settings: None

Port	Storm Control Type	Action	Threshold	Count Down	Interval	Shutdown Forever
1	None	Drop	131072	0	5	
2	None	Drop	131072	0	5	
3	None	Drop	131072	0	5	
4	None	Drop	131072	0	5	
5	None	Drop	131072	0	5	
6	None	Drop	131072	0	5	
7	None	Drop	131072	0	5	
8	None	Drop	131072	0	5	
9	None	Drop	131072	0	5	
10	None	Drop	131072	0	5	
11	None	Drop	131072	0	5	
12	None	Drop	131072	0	5	
13	None	Drop	131072	0	5	
14	None	Drop	131072	0	5	
15	None	Drop	131072	0	5	
16	None	Drop	131072	0	5	
17	None	Drop	131072	0	5	
18	None	Drop	131072	0	5	
19	None	Drop	131072	0	5	

DES-3528 - Microsoft Internet Explorer provided by D-Link Australia
 http://10.90.90.90/www/main.html

D-Link
 Building Networks for People

DES-3528 Console

System Up Time: 00 Days 01:12:41 | Logged in as Administrator, Anonymous - 10.90.90.91 | Logout

Traffic Control

Traffic Control Settings

From Port: 01 | To Port: 01

Action: Drop | Count Down (0 or 5-30): 0 min

Time Interval (5-30): 5 sec | Threshold (0-255000): 131072 pkts

Storm Control Type: None

Traffic Trap Settings

- None
- Broadcast
- Multicast
- Unknown Unicast
- Broadcast + Multicast
- Broadcast + Unknown Unicast
- Multicast + Unknown Unicast
- Broadcast + Multicast + Unknown Unicast

Port	Storm Control Type	Action	Threshold	Count Down	Interval	Shutdown Forever
1	None	Drop	131072	0	5	
2	None	Drop	131072	0	5	
3	None	Drop	131072	0	5	
4	None	Drop	131072	0	5	
5	None	Drop	131072	0	5	
6	None	Drop	131072	0	5	
7	None	Drop	131072	0	5	
8	None	Drop	131072	0	5	
9	None	Drop	131072	0	5	
10	None	Drop	131072	0	5	
11	None	Drop	131072	0	5	
12	None	Drop	131072	0	5	
13	None	Drop	131072	0	5	
14	None	Drop	131072	0	5	
15	None	Drop	131072	0	5	
16	None	Drop	131072	0	5	
17	None	Drop	131072	0	5	
18	None	Drop	131072	0	5	
19	None	Drop	131072	0	5	

DES-3528 - Microsoft Internet Explorer provided by D-Link Australia
 http://10.90.90.90/www/main.html

D-Link
 Building Networks for People

DES-3528 Console

System Up Time: 00 Days 01:13:01 Logged in as Administrator, Anonymous - 10.90.90.91 Logout

802.1p Default Priority

From Port: 01 To Port: 01 Priority: 0

Settings

Port	Priority	Effective Priority
1	0	0
2	0	0
3	0	0
4	0	0
5	0	0
6	0	0
7	0	0
8	0	0
9	0	0
10	0	0
11	0	0
12	0	0
13	0	0
14	0	0
15	0	0
16	0	0
17	0	0
18	0	0
19	0	0
20	0	0
21	0	0
22	0	0
23	0	0
24	0	0
25	0	0
---	---	---

DES-3528 - Microsoft Internet Explorer provided by D-Link Australia
 http://10.90.90.90/www/main.html

D-Link
 Building Networks for People

DES-3528 Console

System Up Time: 00 Days 01:13:22 Logged in as Administrator, Anonymous - 10.90.90.91 Logout

802.1p User Priority

Priority	Class ID
0	Class-2
1	Class-0
2	Class-1
3	Class-3
4	Class-4
5	Class-5
6	Class-6
7	Class-6

DES-3528 - Microsoft Internet Explorer provided by D-Link Australia

http://10.90.90.90/www/main.html

DES-3528

D-Link Building Networks for People

DES-3528 Console

Power xStack Console RPS Master

2 4 6 8 10 12 14 16 18 20 22 24 25T 25F 26T 26F

Refresh Interval 10 secs

Apply

System Up Time: 00 Days 01:13:33 Logged in as Administrator, Anonymous - 10.90.90.91 Logout

DES-3528 Configuration

- L2 Features
 - Jumbo Frame
 - 802.1Q VLAN
 - QinQ
 - 802.1v Protocol VLAN
 - GVRP Settings
 - GVRP Timer Settings
 - Asymmetric VLAN Settings
 - MAC-based VLAN Settings
 - PVID Auto Assign Settings
 - Port Trunking
 - LACP Port Settings
 - Traffic Segmentation
 - IGMP Snooping
 - MLD Snooping Settings
 - Port Mirror
 - Loopback Detection Settings
 - Spanning Tree
 - Forwarding & Filtering
 - LLDP
- QoS
 - HOL Blocking Prevention
 - Bandwidth Control
 - Traffic Control
 - 802.1p Default Priority
 - 802.1p User Priority
 - QoS Scheduling Mechanism**
- Security
 - SRED
 - ACL
 - Monitoring

QoS Scheduling Mechanism

Scheduling Mechanism:

Class ID	Mechanism	Max. Packets (0-15)
Class-0	Strict	1
Class-1	Strict	2
Class-2	Strict	3
Class-3	Strict	4
Class-4	Strict	5
Class-5	Strict	6
Class-6	Strict	7

DES-3528 - Microsoft Internet Explorer provided by D-Link Australia

http://10.90.90.90/www/main.html

DES-3528

D-Link Building Networks for People

DES-3528 Console

Power xStack Console RPS Master

2 4 6 8 10 12 14 16 18 20 22 24 25T 25F 26T 26F

Refresh Interval 10 secs

Apply

System Up Time: 00 Days 01:13:43 Logged in as Administrator, Anonymous - 10.90.90.91 Logout

DES-3528 Configuration

- L2 Features
 - Jumbo Frame
 - 802.1Q VLAN
 - QinQ
 - 802.1v Protocol VLAN
 - GVRP Settings
 - GVRP Timer Settings
 - Asymmetric VLAN Settings
 - MAC-based VLAN Settings
 - PVID Auto Assign Settings
 - Port Trunking
 - LACP Port Settings
 - Traffic Segmentation
 - IGMP Snooping
 - MLD Snooping Settings
 - Port Mirror
 - Loopback Detection Settings
 - Spanning Tree
 - Forwarding & Filtering
 - LLDP
- QoS
 - HOL Blocking Prevention
 - Bandwidth Control
 - Traffic Control
 - 802.1p Default Priority
 - 802.1p User Priority
 - QoS Scheduling Mechanism
 - SRED**
 - SRED Settings**
 - SRED Drop Counter
 - DSCP Trust Settings
 - DSCP Map Settings
 - 802.1p Map Settings
- Security
 - ACL
 - Monitoring

SRED Settings

SRED Global Settings: Disabled Enabled

From Port: 01 To Port: 01 Class ID: 0 All Drop Green: Disabled Threshold Low: Threshold High: Drop Rate Low: 1 Drop Rate High: 1

Port	Class	Drop Green	Threshold Low	Threshold High	Drop Rate Low	Drop Rate High
1	0	Disabled	60	80	1	1
1	1	Disabled	60	80	1	1
1	2	Disabled	60	80	1	1
1	3	Disabled	60	80	1	1
1	4	Disabled	60	80	1	1
1	5	Disabled	60	80	1	1
1	6	Disabled	60	80	1	1
1	7	Disabled	60	80	1	1
2	0	Disabled	60	80	1	1
2	1	Disabled	60	80	1	1
2	2	Disabled	60	80	1	1
2	3	Disabled	60	80	1	1
2	4	Disabled	60	80	1	1
2	5	Disabled	60	80	1	1
2	6	Disabled	60	80	1	1
2	7	Disabled	60	80	1	1
3	0	Disabled	60	80	1	1
3	1	Disabled	60	80	1	1
3	2	Disabled	60	80	1	1
3	3	Disabled	60	80	1	1
3	4	Disabled	60	80	1	1
3	5	Disabled	60	80	1	1

DES-3528 - Microsoft Internet Explorer provided by D-Link Australia
 http://10.90.90.90/www/main.html

D-Link Building Networks for People

DES-3528 Console

System Up Time: 00 Days 01:13:54 Logged in as Administrator, Anonymous - 10.90.90.91 Logout

SRED Drop Counter

Port	Yellow	Red
1	0	0
2	0	0
3	0	0
4	0	0
5	0	0
6	0	0
7	0	0
8	0	0
9	0	0
10	0	0
11	0	0
12	0	0
13	0	0
14	0	0
15	0	0
16	0	0
17	0	0
18	0	0
19	0	0
20	0	0
21	0	0
22	0	0
23	0	0
24	0	0
25	0	0
26	0	0
27	0	0
28	0	0

DES-3528 - Microsoft Internet Explorer provided by D-Link Australia
 http://10.90.90.90/www/main.html

D-Link Building Networks for People

DES-3528 Console

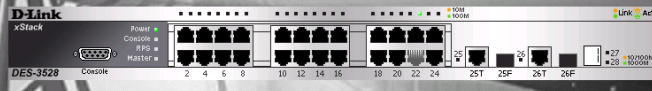
System Up Time: 00 Days 01:14:04 Logged in as Administrator, Anonymous - 10.90.90.91 Logout

DSCP Trust Settings

From Port: 01 To Port: 01 State: Disabled

Port	DSCP Trust
1	Disabled
2	Disabled
3	Disabled
4	Disabled
5	Disabled
6	Disabled
7	Disabled
8	Disabled
9	Disabled
10	Disabled
11	Disabled
12	Disabled
13	Disabled
14	Disabled
15	Disabled
16	Disabled
17	Disabled
18	Disabled
19	Disabled
20	Disabled
21	Disabled
22	Disabled
23	Disabled
24	Disabled
25	Disabled
26	Disabled

DES-3528 - Microsoft Internet Explorer provided by D-Link Australia
 http://10.90.90.90/www/main.html



Refresh Interval: 10 secs

System Up Time: 00 Days 01:15:18 | Logged in as Administrator, Anonymous - 10.90.90.91 | Logout

Safeguard Engine

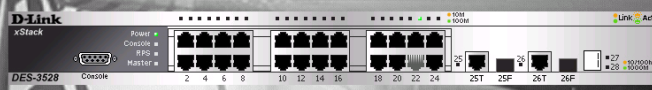
Safeguard Engine State: Disabled Enabled
 Safeguard Engine Current Status: Normal

CPU Utilization Settings

Rising Threshold (20% ~ 100%): % Trap / Log:
 Falling Threshold (20% ~ 100%): % Mode: (Options: Fuzzy, Strict)

Note: D-Link Safeguard Engine is a robust and innovative technology developed by D-Link, which will automatically throttle the impact of packet flooding into the switch's CPU. It keeps D-Link Switches better protected from being too frequently interrupted by malicious viruses or worm attacks.

DES-3528 - Microsoft Internet Explorer provided by D-Link Australia
 http://10.90.90.90/www/main.html



Refresh Interval: 10 secs

System Up Time: 00 Days 01:15:39 | Logged in as Administrator, Anonymous - 10.90.90.91 | Logout

Trusted Host

Permitted Access IP: Net Mask: Add

Delete All

Trusted Host Table

Group	Permitted Access	Net Mask
Note: Create a list of IP addresses that can access the switch. Your local host IP address must be one of the IP addresses to avoid disconnection.		

DES-3528 - Microsoft Internet Explorer provided by D-Link Australia

http://10.90.90.90/www/main.html

DES-3528

D-Link Building Networks for People

DES-3528 Console

Power xStack Console RJ45 Master

2 4 6 8 10 12 14 16 18 20 22 24 25T 25F 26T 26F

Refresh Interval 10 secs

System Up Time: 00 Days 01:15:50 Logged in as Administrator, Anonymous - 10.90.90.91 Logout

DES-3528

- Configuration
- L2 Features
- QoS
- Security
 - Safeguard Engine
 - Trusted Host
 - IP-MAC-Port Binding
 - IMP Global Settings
 - IMP Port Settings
 - IMP Entry Settings
 - DHCP Snooping Entries
 - MAC Block List
 - Port Security
 - DHCP Server Screening
 - 802.1X
 - SSL Settings
 - SSH
 - Access Authentication Control
 - MAC-based Access Control
 - Web Authentication
 - JWAC
 - NetBIOS Filtering Settings
- ACL
- Monitoring

IMP Global Settings

ACL Mode: Disabled

Trap / Log: Disabled

DHCP Snoop State: Disabled

Apply

DES-3528 - Microsoft Internet Explorer provided by D-Link Australia

http://10.90.90.90/www/main.html

DES-3528

D-Link Building Networks for People

DES-3528 Console

Power xStack Console RJ45 Master

2 4 6 8 10 12 14 16 18 20 22 24 25T 25F 26T 26F

Refresh Interval 10 secs

System Up Time: 00 Days 01:23:09 Logged in as Administrator, Anonymous - 10.90.90.91 Logout

DES-3528

- Configuration
- L2 Features
- QoS
- Security
 - Safeguard Engine
 - Trusted Host
 - IP-MAC-Port Binding
 - IMP Global Settings
 - IMP Port Settings
 - IMP Entry Settings
 - DHCP Snooping Entries
 - MAC Block List
 - Port Security
 - DHCP Server Screening
 - 802.1X
 - SSL Settings
 - SSH
 - Access Authentication Control
 - MAC-based Access Control
 - Web Authentication
 - JWAC
 - NetBIOS Filtering Settings
- ACL
- Monitoring

IMP Port Settings

From Port: 01 To Port: 01 State: Disabled Allow Zero IP: Disabled Forward DHCP Packet: Enabled Max Entry (1-50): 5

Apply

Port	State	Allow Zero IP	Forward DHCP Packet	Max Entry
1	Disabled	Disabled	Enabled	5
2	Disabled	Disabled	Enabled	5
3	Disabled	Disabled	Enabled	5
4	Disabled	Disabled	Enabled	5
5	Disabled	Disabled	Enabled	5
6	Disabled	Disabled	Enabled	5
7	Disabled	Disabled	Enabled	5
8	Disabled	Disabled	Enabled	5
9	Disabled	Disabled	Enabled	5
10	Disabled	Disabled	Enabled	5
11	Disabled	Disabled	Enabled	5
12	Disabled	Disabled	Enabled	5
13	Disabled	Disabled	Enabled	5
14	Disabled	Disabled	Enabled	5
15	Disabled	Disabled	Enabled	5
16	Disabled	Disabled	Enabled	5
17	Disabled	Disabled	Enabled	5
18	Disabled	Disabled	Enabled	5
19	Disabled	Disabled	Enabled	5
20	Disabled	Disabled	Enabled	5
21	Disabled	Disabled	Enabled	5
22	Disabled	Disabled	Enabled	5
23	Disabled	Disabled	Enabled	5
24	Disabled	Disabled	Enabled	5
25	Disabled	Disabled	Enabled	5
26	Disabled	Disabled	Enabled	5
27	Disabled	Disabled	Enabled	5

DES-3528 - Microsoft Internet Explorer provided by D-Link Australia

http://10.90.90.90/www/main.html

DES-3528

D-Link
Building Networks for People

DES-3528 Console

Power xStack Console RPO Master

2 4 6 8 10 12 14 16 18 20 22 24 25T 25F 26T 26F

Refresh Interval: 10 secs

Apply

System Up Time: 00 Days 01:23:20 Logged in as Administrator, Anonymous - 10.90.90.91 Logout

DES-3528

- Configuration
- L2 Features
- QoS
- Security
 - Safeguard Engine
 - Trusted Host
 - IP-MAC-Port Binding
 - IMP Global Settings
 - IMP Port Settings
 - IMP Entry Settings**
 - DHCP Snooping Entries
 - MAC Block List
 - Port Security
 - DHCP Server Screening
 - 802.1X
 - SSL Settings
 - SSH
 - Access Authentication Control
 - MAC-based Access Control
 - Web Authentication
 - JWAC
 - NetBIOS Filtering Settings
- ACL
- Monitoring

IMP Entry Settings

IP Address: MAC Address: Ports: All Ports Mode:

Apply Find

View All Delete All

Total Entries: 0

IP Address	MAC Address	Ports	Mode
------------	-------------	-------	------

DES-3528 - Microsoft Internet Explorer provided by D-Link Australia

http://10.90.90.90/www/main.html

DES-3528

D-Link
Building Networks for People

DES-3528 Console

Power xStack Console RPO Master

2 4 6 8 10 12 14 16 18 20 22 24 25T 25F 26T 26F

Refresh Interval: 10 secs

Apply

System Up Time: 00 Days 01:23:30 Logged in as Administrator, Anonymous - 10.90.90.91 Logout

DES-3528

- Configuration
- L2 Features
- QoS
- Security
 - Safeguard Engine
 - Trusted Host
 - IP-MAC-Port Binding
 - IMP Global Settings
 - IMP Port Settings
 - IMP Entry Settings
 - DHCP Snooping Entries**
 - MAC Block List
 - Port Security
 - DHCP Server Screening
 - 802.1X
 - SSL Settings
 - SSH
 - Access Authentication Control
 - MAC-based Access Control
 - Web Authentication
 - JWAC
 - NetBIOS Filtering Settings
- ACL
- Monitoring

DHCP Snooping Entries

Port: Find

Ports (e.g.: 1,7-12) All Clear

View All

Total Entries: 0

IP Address	MAC Address	Lease Time(sec)	Port	Status
------------	-------------	-----------------	------	--------

DES-3528 - Microsoft Internet Explorer provided by D-Link Australia

http://10.90.90.90/www/main.html

DES-3528

D-Link Building Networks for People

DES-3528 Console

Refresh Interval: 10 secs

System Up Time: 00 Days 01:23:40 Logged in as Administrator, Anonymous - 10.90.90.91 Logout

MAC Block List

VID: MAC Address: Find

View All Delete All

Total Entries: 0

VID	VLAN Name	MAC Address	Port
-----	-----------	-------------	------

DES-3528 - Microsoft Internet Explorer provided by D-Link Australia

http://10.90.90.90/www/main.html

DES-3528

D-Link Building Networks for People

DES-3528 Console

Refresh Interval: 10 secs

System Up Time: 00 Days 01:24:01 Logged in as Administrator, Anonymous - 10.90.90.91 Logout

Port Security Settings

Port Security TrapLog Settings

Disabled Enabled Apply

From Port: To Port: Admin State: Max Learning Address (0-64): Lock Address Mode: Apply

Port	Admin State	Max Learning Address	Lock Address Mode
1	Disabled	1	Delete on Reset
2	Disabled	1	Delete on Reset
3	Disabled	1	Delete on Reset
4	Disabled	1	Delete on Reset
5	Disabled	1	Delete on Reset
6	Disabled	1	Delete on Reset
7	Disabled	1	Delete on Reset
8	Disabled	1	Delete on Reset
9	Disabled	1	Delete on Reset
10	Disabled	1	Delete on Reset
11	Disabled	1	Delete on Reset
12	Disabled	1	Delete on Reset
13	Disabled	1	Delete on Reset
14	Disabled	1	Delete on Reset
15	Disabled	1	Delete on Reset
16	Disabled	1	Delete on Reset
17	Disabled	1	Delete on Reset
18	Disabled	1	Delete on Reset
19	Disabled	1	Delete on Reset
20	Disabled	1	Delete on Reset
21	Disabled	1	Delete on Reset
??	Reserved	1	Delete on Reset

DES-3528 - Microsoft Internet Explorer provided by D-Link Australia

http://10.90.90.90/www/main.html

DES-3528

D-Link Building Networks for People

DES-3528 Console

Refresh Interval: 10 secs

System Up Time: 00 Days 01:33:18 | Logged in as Administrator, Anonymous - 10.90.90.91 | Logout

DES-3528

- Configuration
- L2 Features
- QoS
- Security
 - Safeguard Engine
 - Trusted Host
 - P-MAC-Port Binding
 - Port Security
 - Port Security Settings
 - Port Security FDB Entries**
 - DHCP Server Screening
 - 802.1X
 - SSL Settings
 - SSH
 - Access Authentication Control
 - MAC-based Access Control
 - Web Authentication
 - JWAC
 - NetBIOS Filtering Settings
- ACL
- Monitoring

Port Security FDB Entries

Clear Locked Entries

From Port: 01 To Port: 01

Clear

Total Entries: 0

VID	VLAN Name	MAC Address	Port	Type

DES-3528 - Microsoft Internet Explorer provided by D-Link Australia

http://10.90.90.90/www/main.html

DES-3528

D-Link Building Networks for People

DES-3528 Console

Refresh Interval: 10 secs

System Up Time: 00 Days 01:33:39 | Logged in as Administrator, Anonymous - 10.90.90.91 | Logout

DES-3528

- Configuration
- L2 Features
- QoS
- Security
 - Safeguard Engine
 - Trusted Host
 - P-MAC-Port Binding
 - Port Security
 - DHCP Server Screening
 - DHCP Screening Port Settings**
 - DHCP Offer Filtering
 - 802.1X
 - SSL Settings
 - SSH
 - Access Authentication Control
 - MAC-based Access Control
 - Web Authentication
 - JWAC
 - NetBIOS Filtering Settings
- ACL
- Monitoring

DHCP Screening Port Settings

From Port: 01 To Port: 01 State: Disabled

Apply

Port	State
1	Disabled
2	Disabled
3	Disabled
4	Disabled
5	Disabled
6	Disabled
7	Disabled
8	Disabled
9	Disabled
10	Disabled
11	Disabled
12	Disabled
13	Disabled
14	Disabled
15	Disabled
16	Disabled
17	Disabled
18	Disabled
19	Disabled
20	Disabled
21	Disabled
22	Disabled
23	Disabled
24	Disabled
25	Disabled
26	Disabled
27	Disabled

DES-3528 - Microsoft Internet Explorer provided by D-Link Australia

http://10.90.90.90/www/main.html

DES-3528

D-Link Building Networks for People

DES-3528 Console

Power xStack Console RFP Master

2 4 6 8 10 12 14 16 18 20 22 24 25T 25F 26T 26F

Refresh Interval 10 secs Apply

System Up Time: 00 Days 01:33:39 Logged in as Administrator, Anonymous - 10.90.90.91 Logout

DES-3528

- Configuration
- L2 Features
- QoS
- Security
 - Safeguard Engine
 - Trusted Host
 - IP-MAC-Port Binding
 - Port Security
 - DHCP Server Screening
 - DHCP Screening Port Settings
 - DHCP Offer Filtering**
 - 802.1X
 - SSL Settings
 - SSH
 - Access Authentication Control
 - MAC-based Access Control
 - Web Authentication
 - JWAC
 - NetBIOS Filtering Settings
- ACL
- Monitoring

DHCP Offer Filtering

Server IP Address Client's MAC Address Ports All Ports

Total Entries: 0

Server IP Address	Client's MAC Address	Port
Total Entries: 0		

DES-3528 - Microsoft Internet Explorer provided by D-Link Australia

http://10.90.90.90/www/main.html

DES-3528

D-Link Building Networks for People

DES-3528 Console

Power xStack Console RFP Master

2 4 6 8 10 12 14 16 18 20 22 24 25T 25F 26T 26F

Refresh Interval 10 secs Apply

System Up Time: 00 Days 01:33:59 Logged in as Administrator, Anonymous - 10.90.90.91 Logout

DES-3528

- Configuration
- L2 Features
- QoS
- Security
 - Safeguard Engine
 - Trusted Host
 - IP-MAC-Port Binding
 - Port Security
 - DHCP Server Screening
 - 802.1X
 - 802.1X Force Disconnect**
 - 802.1X Settings
 - 802.1X User
 - Authentication RADIUS Server
 - Guest VLAN
 - SSL Settings
 - SSH
 - Access Authentication Control
 - MAC-based Access Control
 - Web Authentication
 - JWAC
 - NetBIOS Filtering Settings
- ACL
- Monitoring

802.1X Force Disconnect

Port

Port
MAC Address

DES-3528 - Microsoft Internet Explorer provided by D-Link Australia

http://10.90.90.90/www/main.html

DES-3528

D-Link Building Networks for People

DES-3528 Console

System Up Time: 00 Days 01:34:20 Logged in as Administrator, Anonymous - 10.90.90.91 Logout

802.1X Settings

Auth Mode: Disabled Auth Protocol: RADIUS EAP
 Forward EAPOL PDU: Disabled

Apply

802.1X Port Access Control

From Port: 01 To Port: 01
 QuietPeriod (0-65535): 60 sec SuppTimeout (1-65535): 30 sec
 ServerTimeout (1-65535): 30 sec MaxReq (1-10): 2 times
 TxPeriod (1-65535): 30 sec ReAuthPeriod (1-65535): 3600 sec
 ReAuthentication: Disabled Port Control: Auto
 Capability: None Direction: Both
 Forward EAPOL PDU On Port: Disabled

Refresh Apply

Port	AdmDir	OpenCtrlDir	Port Control	TxPeriod	Quiet Period	Supp-Timeout	Server-Timeout	MaxReq	ReAuth Period	ReAuthentication	Capability	Forward EAPOL PDU On Port
1	Both	Both	Auto	30	60	30	30	2	3600	Disabled	None	Disabled
2	Both	Both	Auto	30	60	30	30	2	3600	Disabled	None	Disabled
3	Both	Both	Auto	30	60	30	30	2	3600	Disabled	None	Disabled
4	Both	Both	Auto	30	60	30	30	2	3600	Disabled	None	Disabled
5	Both	Both	Auto	30	60	30	30	2	3600	Disabled	None	Disabled
6	Both	Both	Auto	30	60	30	30	2	3600	Disabled	None	Disabled
7	Both	Both	Auto	30	60	30	30	2	3600	Disabled	None	Disabled
8	Both	Both	Auto	30	60	30	30	2	3600	Disabled	None	Disabled
9	Both	Both	Auto	30	60	30	30	2	3600	Disabled	None	Disabled
10	Both	Both	Auto	30	60	30	30	2	3600	Disabled	None	Disabled
11	Both	Both	Auto	30	60	30	30	2	3600	Disabled	None	Disabled
12	Both	Both	Auto	30	60	30	30	2	3600	Disabled	None	Disabled

DES-3528 - Microsoft Internet Explorer provided by D-Link Australia

http://10.90.90.90/www/main.html

DES-3528

D-Link Building Networks for People

DES-3528 Console

System Up Time: 00 Days 01:34:41 Logged in as Administrator, Anonymous - 10.90.90.91 Logout

802.1X User

802.1X User Password Confirm Password

Apply

Note: Password/User Name should be less than 15 characters.

802.1X User Table Total Entries: 0

User Name	Password
-----------	----------

DES-3528 - Microsoft Internet Explorer provided by D-Link Australia

http://10.90.90.90/www/main.html

DES-3528

D-Link
Building Networks for People

DES-3528 Console

Refresh Interval: 10 secs

System Up Time: 00 Days 01:34:52 | Logged in as Administrator, Anonymous - 10.90.90.91 | Logout

Authentication RADIUS Server

Index: 1

IP Address: 0.0.0.0

Authentic Port (1-65535): 1812

Accounting Port (1-65535): 1813

Timeout (1-255): 5 secs

Retransmit (1-255): 2 times

Key (Max:32 characters):

Confirm Key:

Apply

RADIUS Server List

Index	IP Address	Auth-Port	Acct-Port	Timeout	Retransmit	Key
1						
2						
3						

DES-3528 - Microsoft Internet Explorer provided by D-Link Australia

http://10.90.90.90/www/main.html

DES-3528

D-Link
Building Networks for People

DES-3528 Console

Refresh Interval: 10 secs

System Up Time: 00 Days 01:35:02 | Logged in as Administrator, Anonymous - 10.90.90.91 | Logout

Guest VLAN

Add Guest VLAN

VLAN Name:

Apply Delete

Port	01	02	03	04	05	06	07	08	09	10	11	12	13	14	15	16	17	18	19	20	21	22	23	24	25	26
All	<input type="checkbox"/>	<input type="checkbox"/>	<input type="checkbox"/>	<input type="checkbox"/>	<input type="checkbox"/>	<input type="checkbox"/>	<input type="checkbox"/>	<input type="checkbox"/>	<input type="checkbox"/>	<input type="checkbox"/>	<input type="checkbox"/>	<input type="checkbox"/>	<input type="checkbox"/>	<input type="checkbox"/>	<input type="checkbox"/>	<input type="checkbox"/>	<input type="checkbox"/>	<input type="checkbox"/>	<input type="checkbox"/>	<input type="checkbox"/>	<input type="checkbox"/>	<input type="checkbox"/>	<input type="checkbox"/>	<input type="checkbox"/>	<input type="checkbox"/>	<input type="checkbox"/>
27	<input type="checkbox"/>	<input type="checkbox"/>	<input type="checkbox"/>	<input type="checkbox"/>	<input type="checkbox"/>	<input type="checkbox"/>	<input type="checkbox"/>	<input type="checkbox"/>	<input type="checkbox"/>	<input type="checkbox"/>	<input type="checkbox"/>	<input type="checkbox"/>	<input type="checkbox"/>	<input type="checkbox"/>	<input type="checkbox"/>	<input type="checkbox"/>	<input type="checkbox"/>	<input type="checkbox"/>	<input type="checkbox"/>	<input type="checkbox"/>	<input type="checkbox"/>	<input type="checkbox"/>	<input type="checkbox"/>	<input type="checkbox"/>	<input type="checkbox"/>	<input type="checkbox"/>
28	<input type="checkbox"/>	<input type="checkbox"/>	<input type="checkbox"/>	<input type="checkbox"/>	<input type="checkbox"/>	<input type="checkbox"/>	<input type="checkbox"/>	<input type="checkbox"/>	<input type="checkbox"/>	<input type="checkbox"/>	<input type="checkbox"/>	<input type="checkbox"/>	<input type="checkbox"/>	<input type="checkbox"/>	<input type="checkbox"/>	<input type="checkbox"/>	<input type="checkbox"/>	<input type="checkbox"/>	<input type="checkbox"/>	<input type="checkbox"/>	<input type="checkbox"/>	<input type="checkbox"/>	<input type="checkbox"/>	<input type="checkbox"/>	<input type="checkbox"/>	<input type="checkbox"/>

Ports:

Current Guest VLAN Ports:

DES-3528 - Microsoft Internet Explorer provided by D-Link Australia
 http://10.90.90.90/www/main.html

D-Link
 Building Networks for People

DES-3528 Console

System Up Time: 00 Days 01:35:12 Logged in as Administrator, Anonymous - 10.90.90.91 Logout

SSL Settings

SSL State Disabled Enabled
 Cache Timeout (60 - 86400) sec
 Note: Web will be disabled if SSL is enabled. Apply

SSL Ciphersuite Settings

RSA with RC4_128_MD5 Disabled Enabled
 RSA with 3DES EDE CBC SHA Disabled Enabled
 DHE DSS with 3DES EDE CBC SHA Disabled Enabled
 RSA EXPORT with RC4 40 MD5 Disabled Enabled Apply

SSL Certificate Download

Server IP Address
 Certificate File Name
 Key File Name Download

Current Certificate **Loaded with RSA Certificate!**

DES-3528 - Microsoft Internet Explorer provided by D-Link Australia
 http://10.90.90.90/www/main.html

D-Link
 Building Networks for People

DES-3528 Console

System Up Time: 00 Days 01:35:44 Logged in as Administrator, Anonymous - 10.90.90.91 Logout

SSH Settings

SSH Server State Disabled Enabled Apply

SSH Global Settings

Max. Session (1-8)
 Connection Timeout (120-600) sec
 Authfail Attempts (2-20) times
 Rekey Timeout Apply

DES-3528 - Microsoft Internet Explorer provided by D-Link Australia
 http://10.90.90.90/www/main.html

DES-3528

D-Link Building Networks for People

DES-3528 Console

System Up Time: 00 Days 01:35:54 Logged in as Administrator, Anonymous - 10.90.90.91 Logout

SSH Authmode and Algorithm Settings

SSH Authentication Mode Settings

Password Public Key Host Based Apply

Encryption Algorithm

3DES-CBC AES128-CBC AES192-CBC AES256-CBC Cast128-CBC

ARC4 Blow-fish-CBC Twofish128 Twofish192 Twofish256 Apply

Data Integrity Algorithm

HMAC-MD5 HMAC-SHA1 Apply

Public Key Algorithm

HMAC-RSA HMAC-DSA Apply

DES-3528 - Microsoft Internet Explorer provided by D-Link Australia
 http://10.90.90.90/www/main.html

DES-3528

D-Link Building Networks for People

DES-3528 Console

System Up Time: 00 Days 01:36:05 Logged in as Administrator, Anonymous - 10.90.90.91 Logout

SSH User Authentication Lists

Total Entries: 0

User Name	Auth. Mode	Host Name	Host IP
Note: Maximum 8 entries and Host Name should be less than 32 characters.			

DES-3528 - Microsoft Internet Explorer provided by D-Link Australia

http://10.90.90.90/www/main.html

DES-3528

D-Link Building Networks for People

DES-3528 Console

Power xStack Console IPoE Master

2 4 6 8 10 12 14 16 18 20 22 24 25T 25F 26T 26F

Refresh Interval 10 secs

Apply

System Up Time: 00 Days 01:36:15 Logged in as Administrator, Anonymous - 10.90.90.91 Logout

DES-3528

- Configuration
- L2 Features
- QoS
- Security
 - Safeguard Engine
 - Trusted Host
 - IP-MAC-Port Binding
 - Port Security
 - DHCP Server Screening
 - 802.1X
 - SSL Settings
 - SSH
 - SSH Settings
 - SSH Authmode and Algorithm S
 - SSH User Authentication Lists
 - Access Authentication Control
 - Authentication Policy Settings**
 - Application Authentication Settings
 - Authentication Server Group
 - Authentication Server
 - Login Method Lists
 - Enable Method Lists
 - Local Enable Password Settings
 - RADIUS Accounting Settings
 - MAC-based Access Control
 - Web Authentication
 - JWAC
 - NetBIOS Filtering Settings
- ACL
- Monitoring

Authentication Policy Settings

Authentication Policy: Disabled

Response Timeout (0-255): 30 sec

User Attempts (1-255): 3 times

Apply

Enable Admin

Authentication policy is disabled!

DES-3528 - Microsoft Internet Explorer provided by D-Link Australia

http://10.90.90.90/www/main.html

DES-3528

D-Link Building Networks for People

DES-3528 Console

Power xStack Console IPoE Master

2 4 6 8 10 12 14 16 18 20 22 24 25T 25F 26T 26F

Refresh Interval 10 secs

Apply

System Up Time: 00 Days 01:36:25 Logged in as Administrator, Anonymous - 10.90.90.91 Logout

DES-3528

- Configuration
- L2 Features
- QoS
- Security
 - Safeguard Engine
 - Trusted Host
 - IP-MAC-Port Binding
 - Port Security
 - DHCP Server Screening
 - 802.1X
 - SSL Settings
 - SSH
 - SSH Settings
 - SSH Authmode and Algorithm S
 - SSH User Authentication Lists
 - Access Authentication Control
 - Authentication Policy Settings
 - Application Authentication Settings**
 - Authentication Server Group
 - Authentication Server
 - Login Method Lists
 - Enable Method Lists
 - Local Enable Password Settings
 - RADIUS Accounting Settings
 - MAC-based Access Control
 - Web Authentication
 - JWAC
 - NetBIOS Filtering Settings
- ACL
- Monitoring

Application Authentication Settings

Application	Login Method List	Enable Method List
Console	default	default
Telnet	default	default
SSH	default	default
HTTP	default	default

Apply

DES-3528 - Microsoft Internet Explorer provided by D-Link Australia

http://10.90.90.90/www/main.html

DES-3528

D-Link Building Networks for People

DES-3528 Console

System Up Time: 00 Days 01:36:36 Logged in as Administrator, Anonymous - 10.90.90.91 Logout

Authentication Server Group

Sever Group List Edit Sever Group

Group Name (Max: 15 characters) Add

Total Entries: 4

Group Name	Edit	Delete
radius	<input type="button" value="Edit"/>	<input type="button" value="Delete"/>
tacacs	<input type="button" value="Edit"/>	<input type="button" value="Delete"/>
tacacs+	<input type="button" value="Edit"/>	<input type="button" value="Delete"/>
xtacacs	<input type="button" value="Edit"/>	<input type="button" value="Delete"/>

DES-3528 - Microsoft Internet Explorer provided by D-Link Australia

http://10.90.90.90/www/main.html

DES-3528

D-Link Building Networks for People

DES-3528 Console

System Up Time: 00 Days 01:36:46 Logged in as Administrator, Anonymous - 10.90.90.91 Logout

Authentication Server

IP Address Port (1-65535)

Protocol Timeout (1-255) sec

Key (Max: 254 characters) Retransmit (1-255) times

Total Entries: 0

IP Address	Protocol	Port	Timeout	Key	Retransmit
------------	----------	------	---------	-----	------------

DES-3528 - Microsoft Internet Explorer provided by D-Link Australia

http://10.90.90.90/www/main.html

DES-3528

D-Link
Building Networks for People

DES-3528 Console

Refresh Interval: 10 secs

System Up Time: 00 Days 01:36:57 | Logged in as Administrator, Anonymous - 10.90.90.91 | Logout

Login Method Lists

Method List Name (Max: 15 characters):

Priority 1: Priority 2:

Priority 3: Priority 4:

Apply

Total Entries: 1

Method List Name	Priority 1	Priority 2	Priority 3	Priority 4	
default	local	----	----	----	Edit Delete

DES-3528 - Microsoft Internet Explorer provided by D-Link Australia

http://10.90.90.90/www/main.html

DES-3528

D-Link
Building Networks for People

DES-3528 Console

Refresh Interval: 10 secs

System Up Time: 00 Days 01:37:17 | Logged in as Administrator, Anonymous - 10.90.90.91 | Logout

Enable Method Lists

Method List Name (Max: 15 characters):

Priority 1: Priority 2:

Priority 3: Priority 4:

Apply

Total Entries: 1

Method List Name	Priority 1	Priority 2	Priority 3	Priority 4	
default	local	----	----	----	Edit Delete

DES-3528 - Microsoft Internet Explorer provided by D-Link Australia

http://10.90.90.90/www/main.html

DES-3528

D-Link Building Networks for People

DES-3528 Console

Power xStack Console IPoE Master

2 4 6 8 10 12 14 16 18 20 22 24 25T 25F 26T 26F

Refresh Interval 10 secs

Apply

System Up Time: 00 Days 01:37:17 Logged in as Administrator, Anonymous - 10.90.90.91 Logout

DES-3528

- Configuration
- L2 Features
- QoS
- Security
 - Safeguard Engine
 - Trusted Host
 - IP-MAC-Port Binding
 - Port Security
 - DHCP Server Screening
 - 802.1X
 - SSL Settings
 - SSH
 - SSH Settings
 - SSH Authmode and Algorithm S
 - SSH User Authentication Lists
 - Access Authentication Control
 - Authentication Policy Settings
 - Application Authentication Settr
 - Authentication Server Group
 - Authentication Server
 - Login Method Lists
 - Enable Method Lists
 - Local Enable Password Settings
 - RADIUS Accounting Settings
 - MAC-based Access Control
 - Web Authentication
 - JWAC
 - NetBIOS Filtering Settings
- ACL
- Monitoring

Local Enable Password Settings

Old Local Enable Password (Max: 15 characters)

New Local Enable Password

Confirm Local Enable Password

Apply

DES-3528 - Microsoft Internet Explorer provided by D-Link Australia

http://10.90.90.90/www/main.html

DES-3528

D-Link Building Networks for People

DES-3528 Console

Power xStack Console IPoE Master

2 4 6 8 10 12 14 16 18 20 22 24 25T 25F 26T 26F

Refresh Interval 10 secs

Apply

System Up Time: 00 Days 01:37:28 Logged in as Administrator, Anonymous - 10.90.90.91 Logout

DES-3528

- Configuration
- L2 Features
- QoS
- Security
 - Safeguard Engine
 - Trusted Host
 - IP-MAC-Port Binding
 - Port Security
 - DHCP Server Screening
 - 802.1X
 - SSL Settings
 - SSH
 - SSH Settings
 - SSH Authmode and Algorithm S
 - SSH User Authentication Lists
 - Access Authentication Control
 - Authentication Policy Settings
 - Application Authentication Settr
 - Authentication Server Group
 - Authentication Server
 - Login Method Lists
 - Enable Method Lists
 - Local Enable Password Settings
 - RADIUS Accounting Settings
 - MAC-based Access Control
 - Web Authentication
 - JWAC
 - NetBIOS Filtering Settings
- ACL
- Monitoring

RADIUS Accounting Settings

Network

Shell

System

Apply

Network: When enabled, the Switch will send informational packets to a remote RADIUS server when 802.1x port access control events occur on the Switch.

Shell: When enabled, the Switch will send informational packets to a remote RADIUS server when a user either logs in, logs out or times out on the Switch, using the console, Telnet, or SSH.

System: When enabled, the Switch will send informational packets to a remote RADIUS server when system events occur on the Switch, such as a system reset or system boot.

DES-3528 - Microsoft Internet Explorer provided by D-Link Australia
 http://10.90.90.90/www/main.html

DES-3528 Console

System Up Time: 00 Days 01:38:31 Logged in as Administrator, Anonymous - 10.90.90.91 Logout

Web-based Access Control Settings

State:

Method: Logout Timer(1-1440): min Infinite

Authentication VLAN: Redirection Page:

Port Settings

From Port: To Port: State:

Force Disconnection

Port (e.g.: 1,5-10):

Port	State	User Name	Auth State	Assigned Vlan
1	Disabled	N/A	N/A	N/A
2	Disabled	N/A	N/A	N/A
3	Disabled	N/A	N/A	N/A
4	Disabled	N/A	N/A	N/A
5	Disabled	N/A	N/A	N/A
6	Disabled	N/A	N/A	N/A
7	Disabled	N/A	N/A	N/A
8	Disabled	N/A	N/A	N/A
9	Disabled	N/A	N/A	N/A
10	Disabled	N/A	N/A	N/A
11	Disabled	N/A	N/A	N/A
12	Disabled	N/A	N/A	N/A
13	Disabled	N/A	N/A	N/A
14	Disabled	N/A	N/A	N/A
15	Disabled	N/A	N/A	N/A
16	Disabled	N/A	N/A	N/A
17	Disabled	N/A	N/A	N/A
18	Disabled	N/A	N/A	N/A
19	Disabled	N/A	N/A	N/A

DES-3528 - Microsoft Internet Explorer provided by D-Link Australia
 http://10.90.90.90/www/main.html

DES-3528 Console

System Up Time: 00 Days 01:38:41 Logged in as Administrator, Anonymous - 10.90.90.91 Logout

Web-based Access Control User Settings

Create User

User Name: Password: Confirmation:

User - VLAN Mapping

User Name: VLAN Name:

Total Entries: 0

User Name	VLAN Name

DES-3528 - Microsoft Internet Explorer provided by D-Link Australia

http://10.90.90.90/www/main.html

DES-3528

D-Link Building Networks for People

DES-3528 Console

System Up Time: 00 Days 01:39:54 Logged in as Administrator, Anonymous - 10.90.90.91 Logout

JWAC Global Settings

JWAC State: Disabled [Apply]

JWAC Configuration

Virtual IP: 0.0.0.0 Port Number(1-65535): 80 [HTTP] [HTTPS]

UDP Filtering: Enabled [Apply]

Authentication Protocol: PAP Forcible Logout: Enabled [Apply]

Redirect Destination: Quarantine Server Redirect State: Enabled [Apply]

Redirect Delay Time (0-10): 1 sec [Apply]

Quarantine Server Configuration

Error Timeout (5-300): 30 sec Monitor: Disabled [Apply]

URL: [Apply]

Update Server Configuration

Update Server IP: [Apply]

Mask: [Apply]

Total Entries: 0

No.	Update Server	Mask
No.		

DES-3528 - Microsoft Internet Explorer provided by D-Link Australia

http://10.90.90.90/www/main.html

DES-3528

D-Link Building Networks for People

DES-3528 Console

System Up Time: 00 Days 01:40:14 Logged in as Administrator, Anonymous - 10.90.90.91 Logout

JWAC Port Settings

From Port: 01 To Port: 01

State: Disabled [Apply]

Session Timeout(1-1440): 1440 min [Infinite]

Idle Timeout(1-1440): [Infinite]

Max Authenticating Host(1-50): 50

Block Time(0-300): 0 sec [Apply]

Port	State	Max Authenticating Host	Session Timeout	Idle Timeout	Block Time
1	Disabled	50	1440	Infinite	0
2	Disabled	50	1440	Infinite	0
3	Disabled	50	1440	Infinite	0
4	Disabled	50	1440	Infinite	0
5	Disabled	50	1440	Infinite	0
6	Disabled	50	1440	Infinite	0
7	Disabled	50	1440	Infinite	0
8	Disabled	50	1440	Infinite	0
9	Disabled	50	1440	Infinite	0
10	Disabled	50	1440	Infinite	0
11	Disabled	50	1440	Infinite	0
12	Disabled	50	1440	Infinite	0
13	Disabled	50	1440	Infinite	0
14	Disabled	50	1440	Infinite	0
15	Disabled	50	1440	Infinite	0
16	Disabled	50	1440	Infinite	0
17	Disabled	50	1440	Infinite	0
18	Disabled	50	1440	Infinite	0
19	Disabled	50	1440	Infinite	0
20	Disabled	50	1440	Infinite	0
21	Disabled	50	1440	Infinite	0
22	Disabled	50	1440	Infinite	0
23	Disabled	50	1440	Infinite	0

DES-3528 - Microsoft Internet Explorer provided by D-Link Australia
http://10.90.90.90/jwww/main.html

D-Link
Building Networks for People

DES-3528 Console

Power xStack Console IP-Stack Master Link-Ad

Refresh Interval: 10 secs

Apply

System Up Time: 00 Days 01:40:25 | Logged in as Administrator, Anonymous - 10/90/90/91 | Logout

- DES-3528
 - Configuration
 - L2 Features
 - QoS
 - Security
 - Safeguard Engine
 - Trusted Host
 - IP-MAC-Port Binding
 - Port Security
 - DHCP Server Screening
 - 802.1X
 - SSL Settings
 - SSH
 - Access Authentication Control
 - MAC-based Access Control
 - Web Authentication
 - JWAC
 - JWAC Global Settings
 - JWAC Port Settings
 - JWAC User Settings**
 - NETBIOS Filtering Settings
 - ACL
 - Monitoring

JWAC User Settings

User Name: Password: Confirm Password:

VID(1-4094)

Note: Password/User Name should be no more than 15 characters.

Add

Delete All

Total Entries: 0

User Name	Target VID	Password	Confirm Password
-----------	------------	----------	------------------

DES-3528 - Microsoft Internet Explorer provided by D-Link Australia
 http://10.90.90.90/www/main.html

D-Link
 Building Networks for People

DES-3528 Console

System Up Time: 00 Days 01:43:53 Logged in as Administrator, Anonymous - 10.90.90.91 Logout

NetBIOS Filtering Settings

NetBIOS Filtering (Filter NetBIOS Over TCP/IP)

Select All Clear All

Ports:

01	02	03	04	05	06	07	08	09	10	11	12	13	14	15	16	17	18	19	20	21	22	23	24	25	26	27	28
<input type="checkbox"/>	<input type="checkbox"/>	<input type="checkbox"/>	<input type="checkbox"/>	<input type="checkbox"/>	<input type="checkbox"/>	<input type="checkbox"/>	<input type="checkbox"/>	<input type="checkbox"/>	<input type="checkbox"/>	<input type="checkbox"/>	<input type="checkbox"/>	<input type="checkbox"/>	<input type="checkbox"/>	<input type="checkbox"/>	<input type="checkbox"/>	<input type="checkbox"/>	<input type="checkbox"/>	<input type="checkbox"/>	<input type="checkbox"/>	<input type="checkbox"/>	<input type="checkbox"/>	<input type="checkbox"/>	<input type="checkbox"/>	<input type="checkbox"/>	<input type="checkbox"/>	<input type="checkbox"/>	<input type="checkbox"/>

Apply

Extensive NetBIOS Filtering (Filter NetBIOS Over 802.2)

Select All Clear All

Ports:

01	02	03	04	05	06	07	08	09	10	11	12	13	14	15	16	17	18	19	20	21	22	23	24	25	26	27	28
<input type="checkbox"/>	<input type="checkbox"/>	<input type="checkbox"/>	<input type="checkbox"/>	<input type="checkbox"/>	<input type="checkbox"/>	<input type="checkbox"/>	<input type="checkbox"/>	<input type="checkbox"/>	<input type="checkbox"/>	<input type="checkbox"/>	<input type="checkbox"/>	<input type="checkbox"/>	<input type="checkbox"/>	<input type="checkbox"/>	<input type="checkbox"/>	<input type="checkbox"/>	<input type="checkbox"/>	<input type="checkbox"/>	<input type="checkbox"/>	<input type="checkbox"/>	<input type="checkbox"/>	<input type="checkbox"/>	<input type="checkbox"/>	<input type="checkbox"/>	<input type="checkbox"/>	<input type="checkbox"/>	<input type="checkbox"/>

Apply

DES-3528 - Microsoft Internet Explorer provided by D-Link Australia
 http://10.90.90.90/www/main.html

D-Link
 Building Networks for People

DES-3528 Console

System Up Time: 00 Days 01:45:16 Logged in as Administrator, Anonymous - 10.90.90.91 Logout

ACL Configuration Wizard

General ACL Rules

Type: Normal Profile Name:

Profile ID (1-6): Access ID (1-128): Auto Assign

From: Any

To: Any

Action: Permit

Option: Rate Limiting (e.g.: 1-15624)

Ports: (e.g.: 1,4-6,9)

Apply

Note: ACL Wizard will create the access profile and rule automatically.
 For advanced access profile/rule setting, you can manually configure it in Access Profile List.

DES-3528 - Microsoft Internet Explorer provided by D-Link Australia

http://10.90.90.90/www/main.html

DES-3528

D-Link Building Networks for People

DES-3528 Console

Power xStack Console IPD Master

2 4 6 8 10 12 14 16 18 20 22 24 25T 25F 26T 26F

Refresh Interval 10 secs

Apply

System Up Time: 00 Days 01:45:37 Logged in as Administrator, Anonymous - 10.90.90.91 Logout

DES-3528

- Configuration
- L2 Features
- QoS
- Security
- ACL
 - ACL Configuration Wizard
 - Access Profile List
 - CPU Access Profile List
 - ACL Finder
 - ACL Flow Meter
- Monitoring

Access Profile List

Add ACL Profile Delete All

Total Used Rule Entries / Total Unused Rule Entries: 0 / 768

Profile ID	Profile Name	Profile Type	Owner Type

DES-3528 - Microsoft Internet Explorer provided by D-Link Australia

http://10.90.90.90/www/main.html

DES-3528

D-Link Building Networks for People

DES-3528 Console

Power xStack Console IPD Master

2 4 6 8 10 12 14 16 18 20 22 24 25T 25F 26T 26F

Refresh Interval 10 secs

Apply

System Up Time: 00 Days 01:45:37 Logged in as Administrator, Anonymous - 10.90.90.91 Logout

DES-3528

- Configuration
- L2 Features
- QoS
- Security
- ACL
 - ACL Configuration Wizard
 - Access Profile List
 - CPU Access Profile List
 - ACL Finder
 - ACL Flow Meter
- Monitoring

CPU Access Profile List

CPU Interface Filtering State Disabled Enabled

Apply

Add CPU ACL Profile Delete All

Total Used Rule Entries / Total Unused Rule Entries: 0 / 500

Profile ID	Profile Type	Owner Type

DES-3528 - Microsoft Internet Explorer provided by D-Link Australia

http://10.90.90.90/www/main.html

DES-3528

D-Link
Building Networks for People

DES-3528 Console

Power xStack Console RPO Master

2 4 6 8 10 12 14 16 18 20 22 24 25T 25F 26T 26F

Refresh Interval: 10 secs

Apply

System Up Time: 00 Days 01:45:57 Logged in as Administrator, Anonymous - 10.90.90.91 Logout

DES-3528

- Configuration
- L2 Features
- QoS
- Security
 - ACL
 - ACL Configuration Wizard
 - Access Profile List
 - CPU Access Profile List
 - ACL Finder
 - ACL Flow Meter
 - Monitoring

ACL Finder

ACL rule finder helps you identify any rule has been assigned to a specific port

Profile ID: Any Port: State: Normal Find

Profile ID	Access ID	Profile Type	Action

DES-3528 - Microsoft Internet Explorer provided by D-Link Australia

http://10.90.90.90/www/main.html

DES-3528

D-Link
Building Networks for People

DES-3528 Console

Power xStack Console RPO Master

2 4 6 8 10 12 14 16 18 20 22 24 25T 25F 26T 26F

Refresh Interval: 10 secs

Apply

System Up Time: 00 Days 01:46:08 Logged in as Administrator, Anonymous - 10.90.90.91 Logout

DES-3528

- Configuration
- L2 Features
- QoS
- Security
 - ACL
 - ACL Configuration Wizard
 - Access Profile List
 - CPU Access Profile List
 - ACL Finder
 - ACL Flow Meter
 - Monitoring

ACL Flow Meter

Profile ID: Access ID: Find

Add View All Delete All

Total Entries: 0

Profile ID	Access ID	Mode	Modify	Display	Delete

DES-3528 - Microsoft Internet Explorer provided by D-Link Australia

http://10.90.90.90/www/main.html

DES-3528

D-Link Building Networks for People

DES-3528 Console

Power xStack Console RPO Master

2 4 6 8 10 12 14 16 18 20 22 24 25T 25F 26T 26F

Refresh Interval 10 secs

Apply

System Up Time: 00 Days 01:46:18 Logged in as Administrator, Anonymous - 10.90.90.91 Logout

DES-3528

- Configuration
- L2 Features
- QoS
- Security
- ACL
- Monitoring
 - Device Status
 - CPU Utilization
 - Port Utilization
 - Packet Size
 - Packets
 - Errors
 - Port Access Control
 - Browse ARP Table
 - Browse VLAN
 - Show VLAN Ports
 - Browse Router Port
 - Browse MLD Router Port
 - Browse Session Table
 - IGMP Snooping Group
 - MLD Snooping Group
 - JWAC Host Table
 - MAC Address Table
 - System Log

Device Status

Internal Power: Active External Power: Fail

DES-3528 - Microsoft Internet Explorer provided by D-Link Australia

http://10.90.90.90/www/main.html

DES-3528

D-Link Building Networks for People

DES-3528 Console

Power xStack Console RPO Master

2 4 6 8 10 12 14 16 18 20 22 24 25T 25F 26T 26F

Refresh Interval 10 secs

Apply

System Up Time: 00 Days 01:46:28 Logged in as Administrator, Anonymous - 10.90.90.91 Logout

DES-3528

- Configuration
- L2 Features
- QoS
- Security
- ACL
- Monitoring
 - Device Status
 - CPU Utilization
 - Port Utilization
 - Packet Size
 - Packets
 - Errors
 - Port Access Control
 - Browse ARP Table
 - Browse VLAN
 - Show VLAN Ports
 - Browse Router Port
 - Browse MLD Router Port
 - Browse Session Table
 - IGMP Snooping Group
 - MLD Snooping Group
 - JWAC Host Table
 - MAC Address Table
 - System Log

CPU Utilization

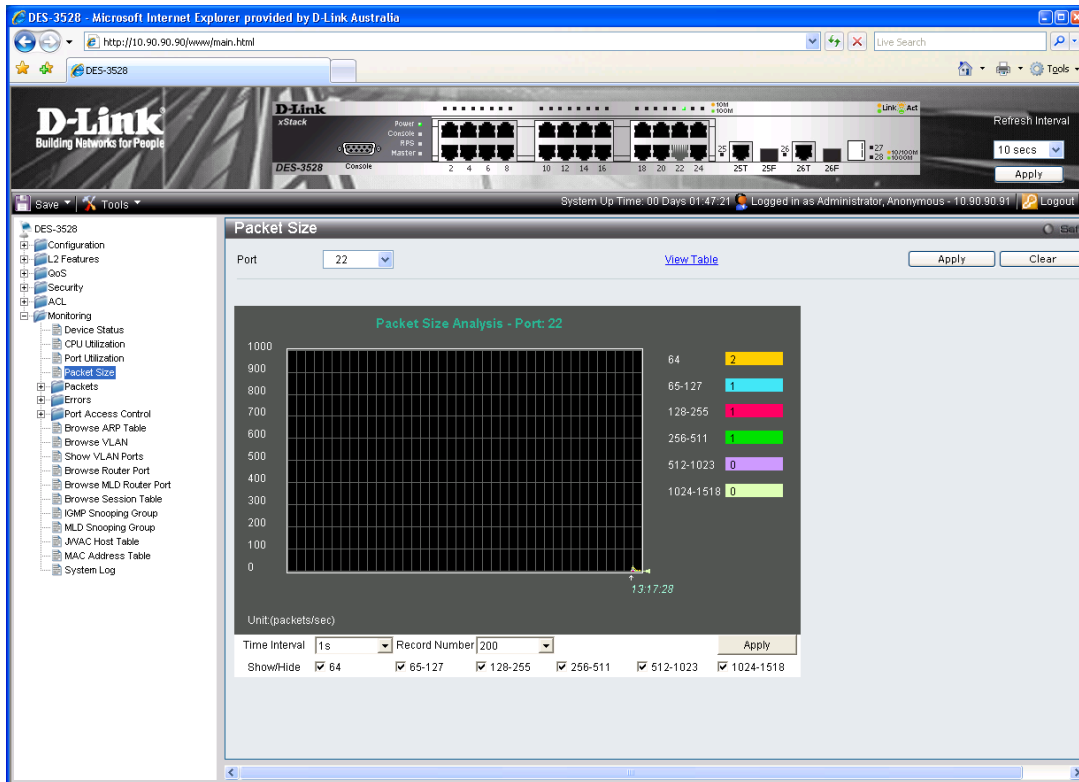
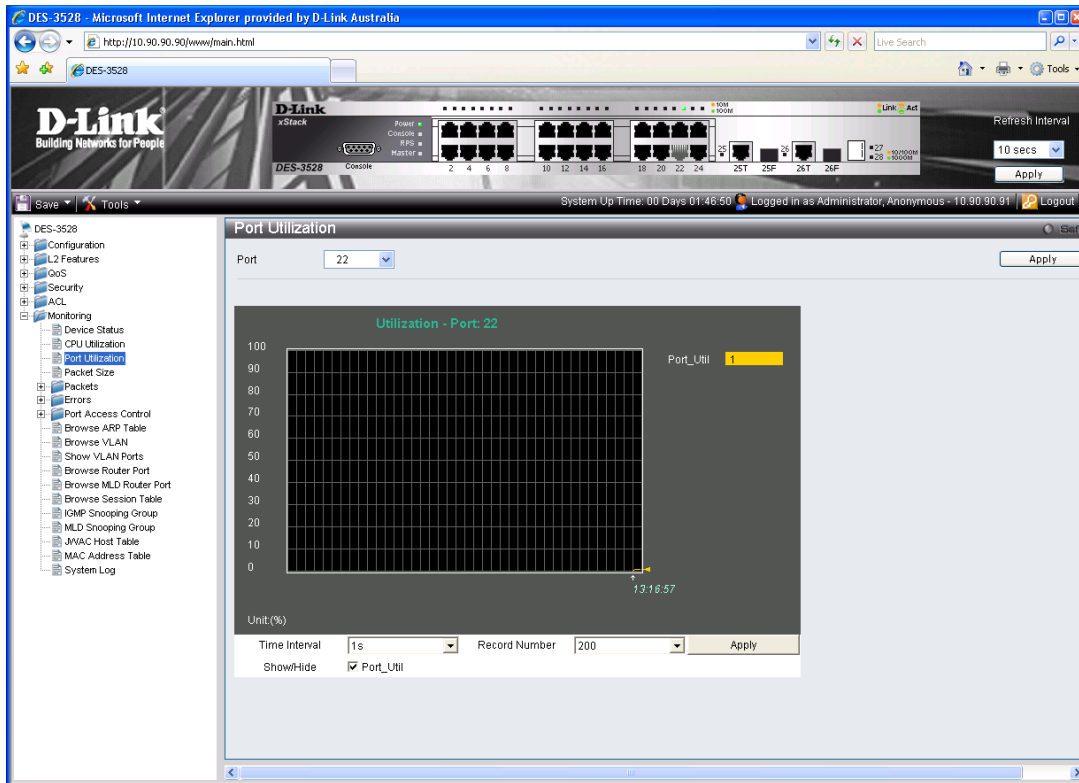
Utilization - CPU

Unit: (%)

Time Interval: 1s Record Number: 200

Show/Hide: Five Secs One Min Five Mins

Apply



DES-3528 - Microsoft Internet Explorer provided by D-Link Australia

http://10.90.90.90/www/main.html

DES-3528

D-Link Building Networks for People

DES-3528 Console

System Up Time: 00 Days 01:47:53 Logged in as Administrator, Anonymous - 10.90.90.91 Logout

Packet Size Table

Port: 22

View Graphic

Apply Clear

Monitoring

- Device Status
- CPU Utilization
- Port Utilization
- Packet Size
- Packets
 - Received(Rx)
 - UMB_Cast(Rx)
 - Transmitted(Tx)
- Errors
 - Received(Rx)
 - Transmitted(Tx)
- Port Access Control
 - Browse ARP Table
 - Browse VLAN
 - Show VLAN Ports
 - Browse Router Port
 - Browse MLD Router Port
 - Browse Session Table
 - IGMP Snooping Group
 - MLD Snooping Group
 - JWAC Host Table
 - MAC Address Table
 - System Log

Windows Internet Explorer

Please update JRE version to 1.6.0 or later.

OK

DES-3528 - Microsoft Internet Explorer provided by D-Link Australia

http://10.90.90.90/www/main.html

DES-3528

D-Link Building Networks for People

DES-3528 Console

System Up Time: 00 Days 01:51:48 Logged in as Administrator, Anonymous - 10.90.90.93 Logout

Packet Size Table

Port: 22

View Graphic

Apply

Port: 22 1s OK

Frame Size	Frame Counts	Frames/sec
64	19573	7
65-127	9562	1
128-255	3029	1
256-511	5991	1
512-1023	2982	0
1024-1518	13980	0

Monitoring

- Device Status
- CPU Utilization
- Port Utilization
- Packet Size
- Packets
 - Received(Rx)
 - UMB_Cast(Rx)
 - Transmitted(Tx)
- Errors
 - Received(Rx)
 - Transmitted(Tx)
- Port Access Control
 - Browse ARP Table
 - Browse VLAN
 - Show VLAN Ports
 - Browse Router Port
 - Browse MLD Router Port
 - Browse Session Table
 - IGMP Snooping Group
 - MLD Snooping Group
 - JWAC Host Table
 - MAC Address Table
 - System Log

Done

Internet | Protected Mode: Off

100%

DES-3528 - Microsoft Internet Explorer provided by D-Link Australia

http://10.90.90.90/www/main.html

DES-3528

D-Link
Building Networks for People

xStack

Power, Console, RPS, Master

DES-3528

System Up Time: 00 Days 01:52:59 | Logged in as Administrator, Anonymous - 10.90.90.93 | Logout

Received(Rx)

Port: 22

View Table

Apply

Rx Error Analysis - Port: 22

CRCErr 0

UnderSize 0

OverSize 0

Fragment 0

Jabber 0

Drop 14225

SymbolErr 0

Time Interval: 1s | Record Number: 200

ShowHide: CRCErr, UnderSize, OverSize, Fragment, Jabber, Drop, SymbolErr

Done

Internet | Protected Mode: Off | 100%

DES-3528 - Microsoft Internet Explorer provided by D-Link Australia

http://10.90.90.90/www/main.html

DES-3528

D-Link
Building Networks for People

xStack

Power, Console, RPS, Master

DES-3528

System Up Time: 00 Days 01:53:51 | Logged in as Administrator, Anonymous - 10.90.90.93 | Logout

RADIUS Authentication

Clear

RADIUS

ServerIndex	InvalidServerAddr	Identifier	AuthServerAddr	ServerPortNumber	RoundTripTime	AccessRequests	AccessRe
1	0		0.0.0.0	0	0	0	0
2	0		0.0.0.0	0	0	0	0
3	0		0.0.0.0	0	0	0	0

Refresh Interval: 10 secs

Apply

Done

Internet | Protected Mode: Off | 100%

DES-3528 - Microsoft Internet Explorer provided by D-Link Australia
 http://10.90.90.90/www/main.html

D-Link Building Networks for People

Power +
 Console +
 xStack
 DES-3528 Console

Refresh Interval
 10 secs
 Apply

System Up Time: 00 Days 01:54:12 Logged in as Administrator, Anonymous - 10.90.90.93 Logout

DES-3528
 Configuration
 L2 Features
 QoS
 Security
 ACL
 Monitoring
 Device Status
 CPU Utilization
 Port Utilization
 Packet Size
 Packets
 Received(Rx)
 UMB_Cast(Rx)
 Transmitted(Tx)
 Errors
 Received(Rx)
 Transmitted(Tx)
 Port Access Control
RADIUS Authentication
 RADIUS Account Client
 Browse ARP Table
 Browse VLAN
 Show VLAN Ports
 Browse Router Port
 Browse MLD Router Port
 Browse Session Table
 IGMP Snooping Group
 MLD Snooping Group
 JWAC Host Table
 MAC Address Table
 System Log

RADIUS Authentication

Clear

RADIUS Authentication Time Interval: 1s OK

AccessRetrans	AccessAccepts	AccessRejects	AccessChallenges	AccessResponses	BadAuthenticators	PendingRequests	Timeout
0	0	0	0	0	0	0	0
0	0	0	0	0	0	0	0
0	0	0	0	0	0	0	0

Done Internet | Protected Mode: Off 100%

DES-3528 - Microsoft Internet Explorer provided by D-Link Australia
 http://10.90.90.90/www/main.html

D-Link Building Networks for People

Power +
 Console +
 xStack
 DES-3528 Console

Refresh Interval
 10 secs
 Apply

System Up Time: 00 Days 01:54:22 Logged in as Administrator, Anonymous - 10.90.90.93 Logout

DES-3528
 Configuration
 L2 Features
 QoS
 Security
 ACL
 Monitoring
 Device Status
 CPU Utilization
 Port Utilization
 Packet Size
 Packets
 Received(Rx)
 UMB_Cast(Rx)
 Transmitted(Tx)
 Errors
 Received(Rx)
 Transmitted(Tx)
 Port Access Control
RADIUS Authentication
 RADIUS Account Client
 Browse ARP Table
 Browse VLAN
 Show VLAN Ports
 Browse Router Port
 Browse MLD Router Port
 Browse Session Table
 IGMP Snooping Group
 MLD Snooping Group
 JWAC Host Table
 MAC Address Table
 System Log

RADIUS Authentication

Clear

OK

AccessRetrans	AccessChallenges	AccessResponses	BadAuthenticators	PendingRequests	Timeouts	UnknownTypes	PacketsDropped
0	0	0	0	0	0	0	0
0	0	0	0	0	0	0	0
0	0	0	0	0	0	0	0

Done Internet | Protected Mode: Off 100%

DES-3528 - Microsoft Internet Explorer provided by D-Link Australia

http://10.90.90.90/www/main.html

DES-3528

D-Link Building Networks for People

DES-3528 Console

System Up Time: 00 Days 01:55:14 Logged in as Administrator, Anonymous - 10.90.90.91 Logout

Browse ARP Table

Interface Name IP Address Find

Show Static Clear All

Total Entries: 5

Interface Name	IP Address	MAC Address	Type
System	10.0.0.0	FF-FE-FF-FF-FF-FF	Local/Broadcast
System	10.90.90.90	00-1E-58-50-1C-F0	Local
System	10.90.90.91	00-0F-EA-ED-82-91	Dynamic
System	10.90.90.93	00-1A-4B-69-DE-FF	Dynamic
System	10.255.255.255	FF-FE-FF-FF-FF-FF	Local/Broadcast

<< Back Next >>

DES-3528 - Microsoft Internet Explorer provided by D-Link Australia

http://10.90.90.90/www/main.html

DES-3528

D-Link Building Networks for People

DES-3528 Console

System Up Time: 00 Days 01:55:14 Logged in as Administrator, Anonymous - 10.90.90.91 Logout

Browse VLAN

VID Find

VLAN ID: 1
 VLAN Name: default
 VLAN Type: Static
 Advertisement: Enabled

Total Entries: 1

Port																											
01	02	03	04	05	06	07	08	09	10	11	12	13	14	15	16	17	18	19	20	21	22	23	24	25	26	27	28
U	U	U	U	U	U	U	U	U	U	U	U	U	U	U	U	U	U	U	U	U	U	U	U	U	U	U	U

Note: T: Tagged Port, U: Untagged Port, F: Forbidden Port

<< Back Next >>

DES-3528 - Microsoft Internet Explorer provided by D-Link Australia

http://10.90.90.90/www/main.html

DES-3528

D-Link Building Networks for People

DES-3528 Console

Power xStack Console RPO Master

2 4 6 8 10 12 14 16 18 20 22 24 25T 25F 26T 26F

Refresh Interval 10 secs Apply

System Up Time: 00 Days 01:55:24 Logged in as Administrator, Anonymous - 10.90.90.91 Logout

DES-3528

- Configuration
- L2 Features
- QoS
- Security
- ACL
- Monitoring
 - Device Status
 - CPU Utilization
 - Port Utilization
 - Packet Size
 - Packets
 - Errors
 - Port Access Control
 - Browse ARP Table
 - Browse VLAN
 - Show VLAN Ports
 - Browse Router Port
 - Browse MLD Router Port
 - Browse Session Table
 - IGMP Snooping Group
 - MLD Snooping Group
 - JVAC Host Table
 - MAC Address Table
 - System Log

Show VLAN Ports

Port 01 Find

Port	VID	Untagged	Tagged	Dynamic	Forbidden
1	1	X			

DES-3528 - Microsoft Internet Explorer provided by D-Link Australia

http://10.90.90.90/www/main.html

DES-3528

D-Link Building Networks for People

DES-3528 Console

Power xStack Console RPO Master

2 4 6 8 10 12 14 16 18 20 22 24 25T 25F 26T 26F

Refresh Interval 10 secs Apply

System Up Time: 00 Days 01:55:36 Logged in as Administrator, Anonymous - 10.90.90.91 Logout

DES-3528

- Configuration
- L2 Features
- QoS
- Security
- ACL
- Monitoring
 - Device Status
 - CPU Utilization
 - Port Utilization
 - Packet Size
 - Packets
 - Errors
 - Port Access Control
 - Browse ARP Table
 - Browse VLAN
 - Show VLAN Ports
 - Browse Router Port
 - Browse MLD Router Port
 - Browse Session Table
 - IGMP Snooping Group
 - MLD Snooping Group
 - JVAC Host Table
 - MAC Address Table
 - System Log

Browse Router Port

VID Find

VLAN ID: 1
VLAN Name: default

Total Entries: 1

Port																											
01	02	03	04	05	06	07	08	09	10	11	12	13	14	15	16	17	18	19	20	21	22	23	24	25	26	27	28

<<Back Next>>

Note: S:Static Router Port, D:Dynamic Router Port, F:Forbidden Router Port

DES-3528 - Microsoft Internet Explorer provided by D-Link Australia

http://10.90.90.90/www/main.html

DES-3528

D-Link Building Networks for People

Refresh Interval: 10 secs

System Up Time: 00 Days 01:55:45 | Logged in as Administrator, Anonymous - 10.90.90.91 | Logout

Browse MLD Router Port

VID: Find

VLAN ID: 1
VLAN Name: default

Total Entries: 1

Port	
ID	Port
01	02
03	04
05	06
07	08
09	10
11	12
13	14
15	16
17	18
19	20
21	22
23	24
25	26
27	28

<<Back Next>>

Note: S:Slatic Router Port, D:Dynamic Router Port, F:Forbidden Router Port

DES-3528 - Microsoft Internet Explorer provided by D-Link Australia

http://10.90.90.90/www/main.html

DES-3528

D-Link Building Networks for People

Refresh Interval: 10 secs

System Up Time: 00 Days 01:55:56 | Logged in as Administrator, Anonymous - 10.90.90.91 | Logout

Browse Session Table

Refresh

ID	Live Time	From	Level	Name
8	00:05:42:70	Serial Port	1	Anonymous

DES-3528 - Microsoft Internet Explorer provided by D-Link Australia
 http://10.90.90.90/www/main.html

D-Link
 Building Networks for People

DES-3528 Console

System Up Time: 00 Days 01:56:06 Logged in as Administrator, Anonymous - 10.90.90.91 Logout

IGMP Snooping Group

VLAN Name Find

IGMP Snooping Group Table

VID	-
VLAN Name	-
Multicast Group	-
MAC Address	-
Reports	-

Total Entries: 0

Member Port																												
01	02	03	04	05	06	07	08	09	10	11	12	13	14	15	16	17	18	19	20	21	22	23	24	25	26	27	28	

<<Back Next>>

DES-3528 - Microsoft Internet Explorer provided by D-Link Australia
 http://10.90.90.90/www/main.html

D-Link
 Building Networks for People

DES-3528 Console

System Up Time: 00 Days 01:56:17 Logged in as Administrator, Anonymous - 10.90.90.91 Logout

MLD Snooping Group

VLAN Name Find

MLD Snooping Group Table

VID	-
VLAN Name	-
Multicast Group	-
MAC Address	-
Reports	-

Total Entries: 0

Listening Port																												
01	02	03	04	05	06	07	08	09	10	11	12	13	14	15	16	17	18	19	20	21	22	23	24	25	26	27	28	

<<Back Next>>

DES-3528 - Microsoft Internet Explorer provided by D-Link Australia

http://10.90.90.90/www/main.html

DES-3528

D-Link Building Networks for People

Refresh Interval: 10 secs

System Up Time: 00 Days 01:56:27 Logged in as Administrator, Anonymous - 10.90.90.91 Logout

JWAC Host Table

Port List (e.g.:1,5-10) Authenticated Authenticating Blocked

Total Authenticating Hosts: 0
 Total Authenticated Hosts: 0
 Total Blocked Hosts: 0

Hosts	Port	Vid	Remaining AgeTime / IdleTime or BlockingTime	Authentication State
<input type="button" value="Back"/> <input type="button" value="Next"/>				

DES-3528 - Microsoft Internet Explorer provided by D-Link Australia

http://10.90.90.90/www/main.html

DES-3528

D-Link Building Networks for People

Refresh Interval: 10 secs

System Up Time: 00 Days 01:56:38 Logged in as Administrator, Anonymous - 10.90.90.91 Logout

MAC Address Table

Port:

VLAN Name:

MAC Address:

Total Entries: 15

VID	VLAN Name	MAC Address	Port	Type
1	default	00-00-AA-88-93-2D	22	Dynamic
1	default	00-0C-29-73-03-48	22	Dynamic
1	default	00-0F-EA-ED-92-91	22	Dynamic
1	default	00-13-46-37-EF-6A	22	Dynamic
1	default	00-15-C5-FA-13-81	22	Dynamic
1	default	00-15-E9-6C-C7-7E	22	Dynamic
1	default	00-15-E9-92-EF-00	22	Dynamic
1	default	00-19-5B-CA-25-61	22	Dynamic
1	default	00-1A-4B-68-DE-FF	22	Dynamic
1	default	00-1E-58-50-1C-F0	CPU	Self

DES-3528 - Microsoft Internet Explorer provided by D-Link Australia

http://10.90.90.90/www/main.html

DES-3528

D-Link Building Networks for People

DES-3528 Console

Refresh Interval: 10 secs

System Up Time: 00 Days 01:58:48

Logged in as Administrator, Anonymous - 10.90.90.91

Save Tools

- DES-3528
 - Configuration
 - L2 Features
 - QoS
 - Security
 - ACL
 - Monitoring
 - Device Status
 - CPU Utilization
 - Port Utilization
 - Packet Size
 - Packets
 - Errors
 - Port Access Control
 - Browse ARP Table
 - Browse VLAN
 - Show VLAN Ports
 - Browse Router Port
 - Browse MLD Router Port
 - Browse Session Table
 - IGMP Snooping Group
 - MLD Snooping Group
 - JVAC Host Table
 - MAC Address Table
 - System Log

System Log

Log Type: Regular Log

Total Entries: 6

Index	Date-Time	Log Text
6	2008-08-12, 00:48:28	Successful login through Web (Username: Anonymous)
5	2008-08-11, 23:40:12	Successful login through Web (Username: Anonymous)
4	2008-08-11, 23:38:42	Web session timed out (Username: Anonymous)
3	2008-08-11, 23:28:35	Successful login through Web (Username: Anonymous)
2	2008-08-11, 23:27:45	Port 22 link up, 100Mbps FULL duplex
1	2008-08-11, 22:57:07	System started up

<< Back Next >>