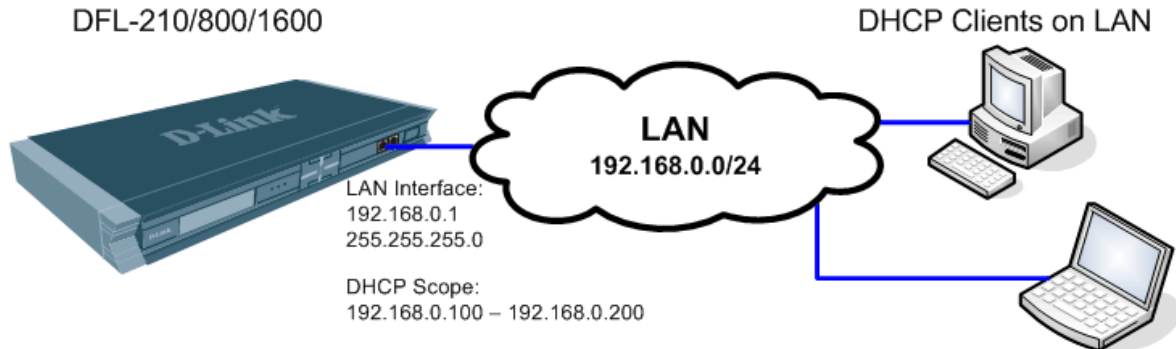


## DFL-210, DFL-800, DFL-1600 How To Setup DHCP On LAN Interface

This setup example uses the following network settings:



### DHCP Server configuration steps:

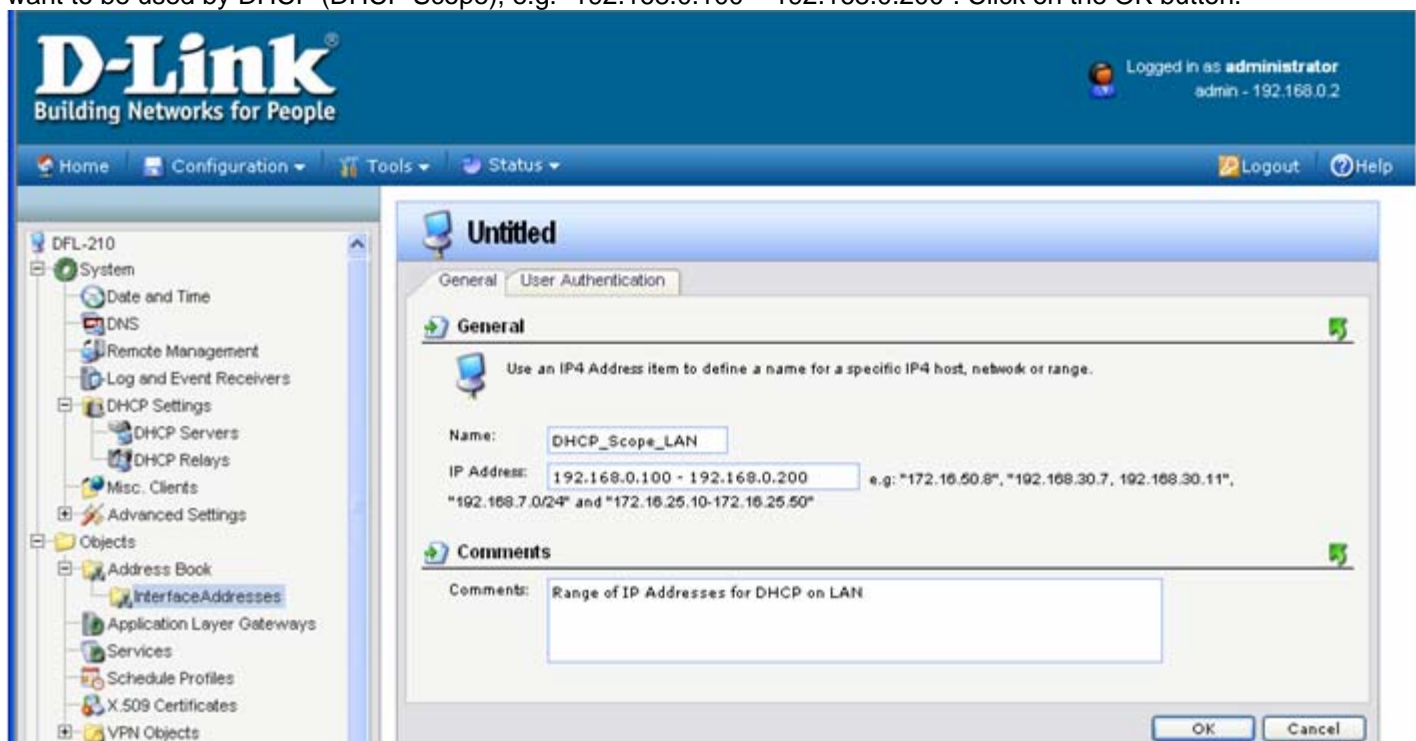
**Step 1.** Log into the Firewall by opening Internet Explorer and typing the LAN address of the Firewall. In our example we are using 192.168.0.1. Enter Username and Password which you specified during the initial setup of the Firewall.

**Step 2.** Go to Objects > Address Book > Interface Addresses. Click on Add and select "IP4 Host/Network".

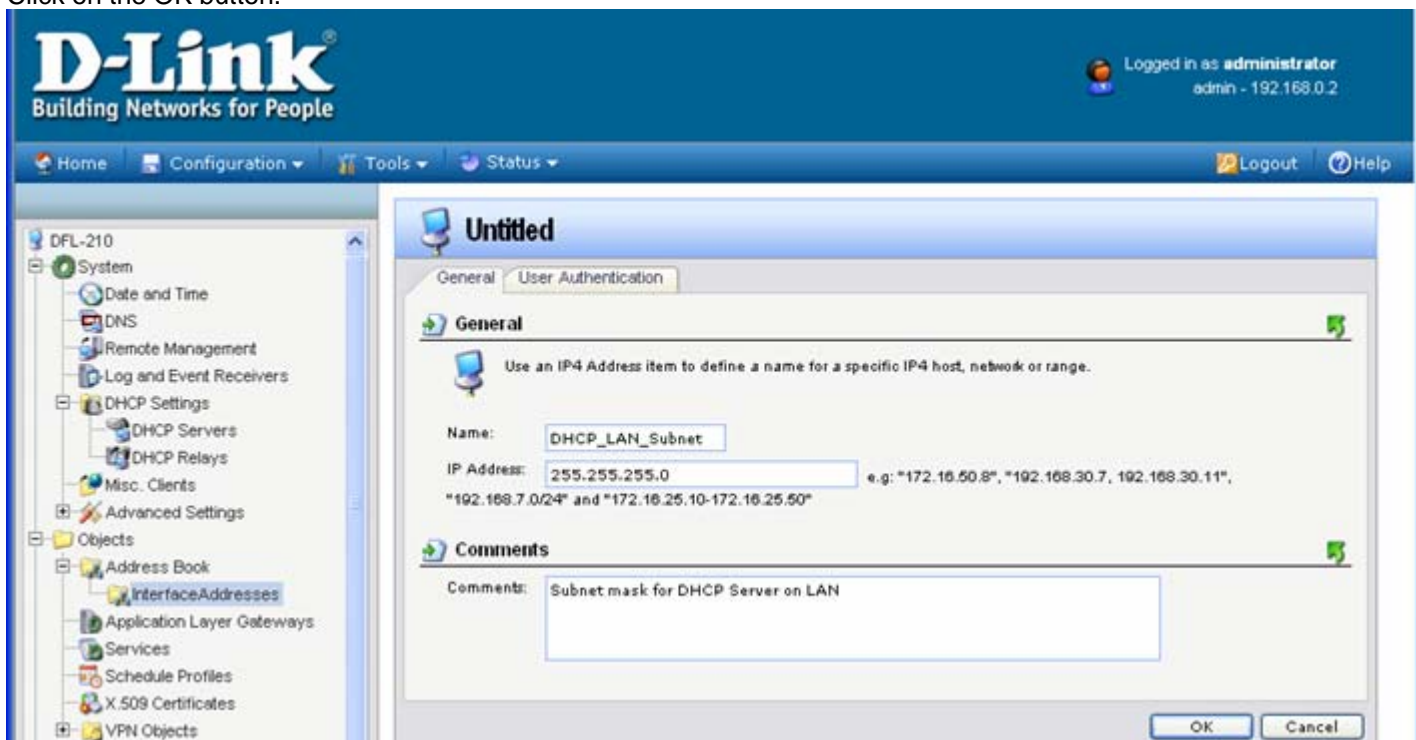
The screenshot shows the D-Link Firewall configuration web interface. The top navigation bar includes 'Home', 'Configuration', 'Tools', and 'Status'. The user is logged in as 'administrator' with IP 192.168.0.2. The left sidebar shows a tree view with 'Objects' > 'Address Book' > 'InterfaceAddresses' selected. The main content area is titled 'InterfaceAddresses' and contains a table of address objects. A red arrow points to the 'Add' dropdown menu, which is open and shows 'IP4 Host/Network' selected.

	Address	UserAuthGroups	Comments
IP4 Address Group	192.168.0.1		IPAddress of interface lan
Ethernet Address Group	192.168.0.0/24		The network on interface lan
Address Folder	172.17.100.254		IPAddress of interface dmz
dmznet	172.17.100.0/24		The network on interface dmz
wan_ip	202.129.109.93		IPAddress of interface wan
wannet	202.129.109.60/30		The network on interface wan
wan_defaultgw_ip	202.129.109.65		
dnsserver1_ip	4.2.2.3		
WEB_Server	172.17.100.253		WEB Server on DMZ
Virtual_IP_2	202.129.109.92		
WEB_Server_LAN	192.168.0.2		WEB Server on LAN

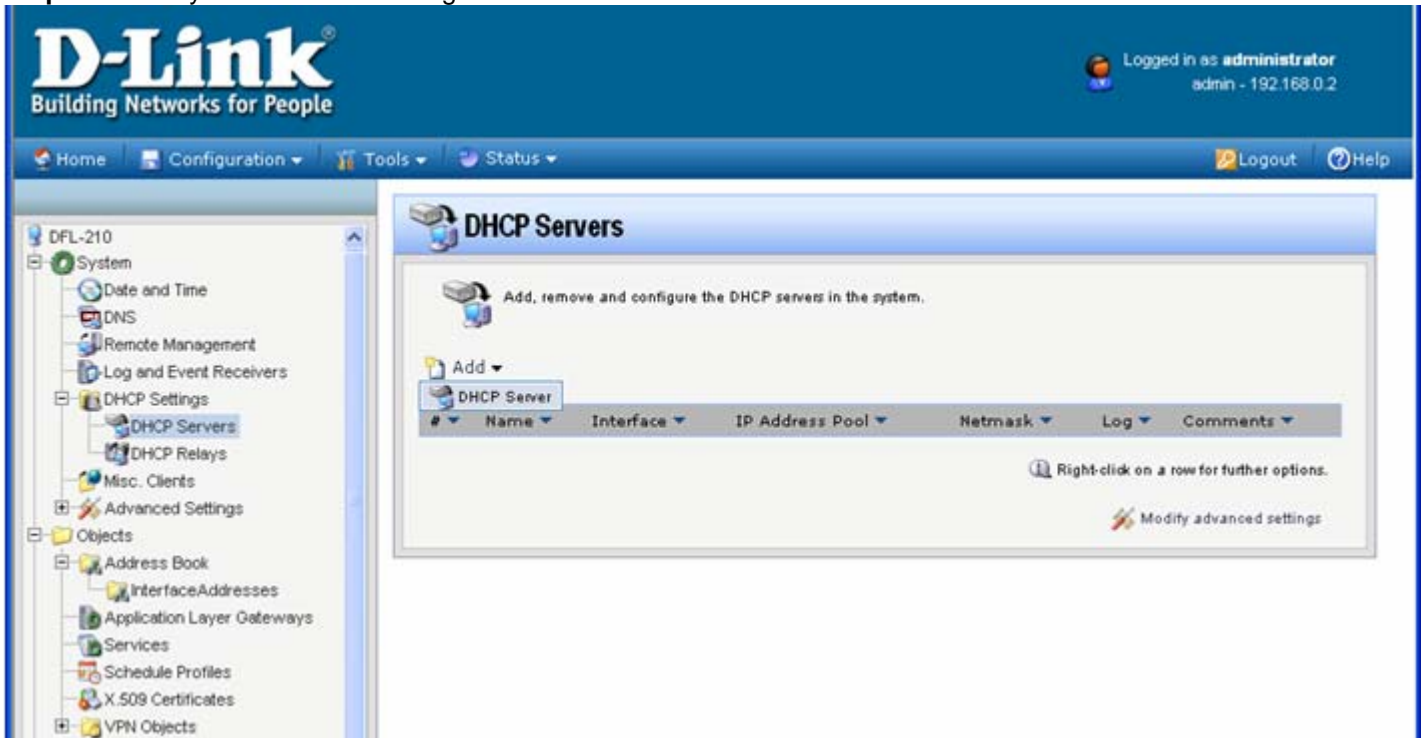
**Step 3.** Give the new address entry a name, e.g. DHCP\_Scope\_LAN. Specify the range of IP addresses which you want to be used by DHCP (DHCP Scope), e.g. "192.168.0.100 – 192.168.0.200". Click on the OK button.



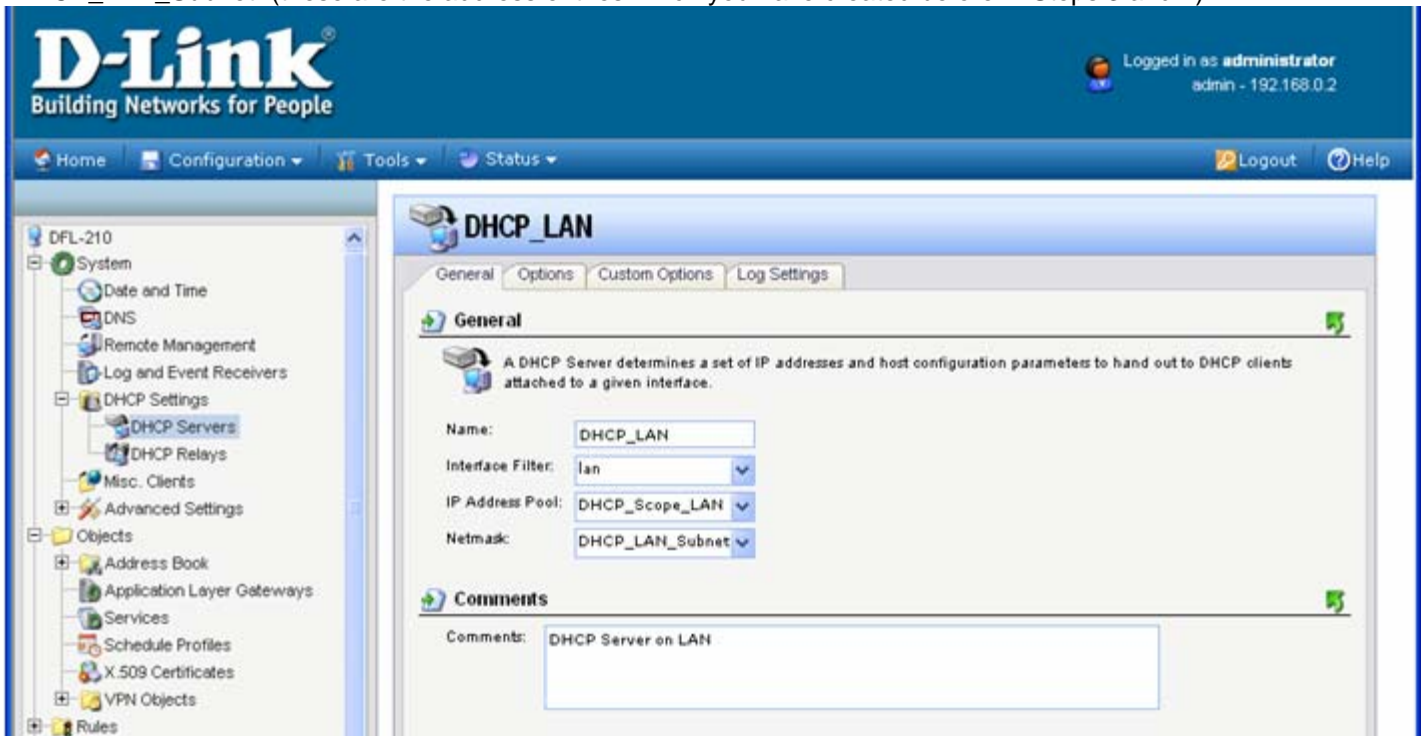
**Step 4.** Under Interface Addresses add another "IP4 Host/Network" for the DHCP Subnet Mask. Give the new address entry a name, e.g. DHCP\_Subnet\_LAN. Specify the subnet mask which is used on your LAN, e.g. "255.255.255.0". Click on the OK button.



**Step 5.** Go to System > DHCP Settings > DHCP Servers. Click on Add and select “DHCP Server”.



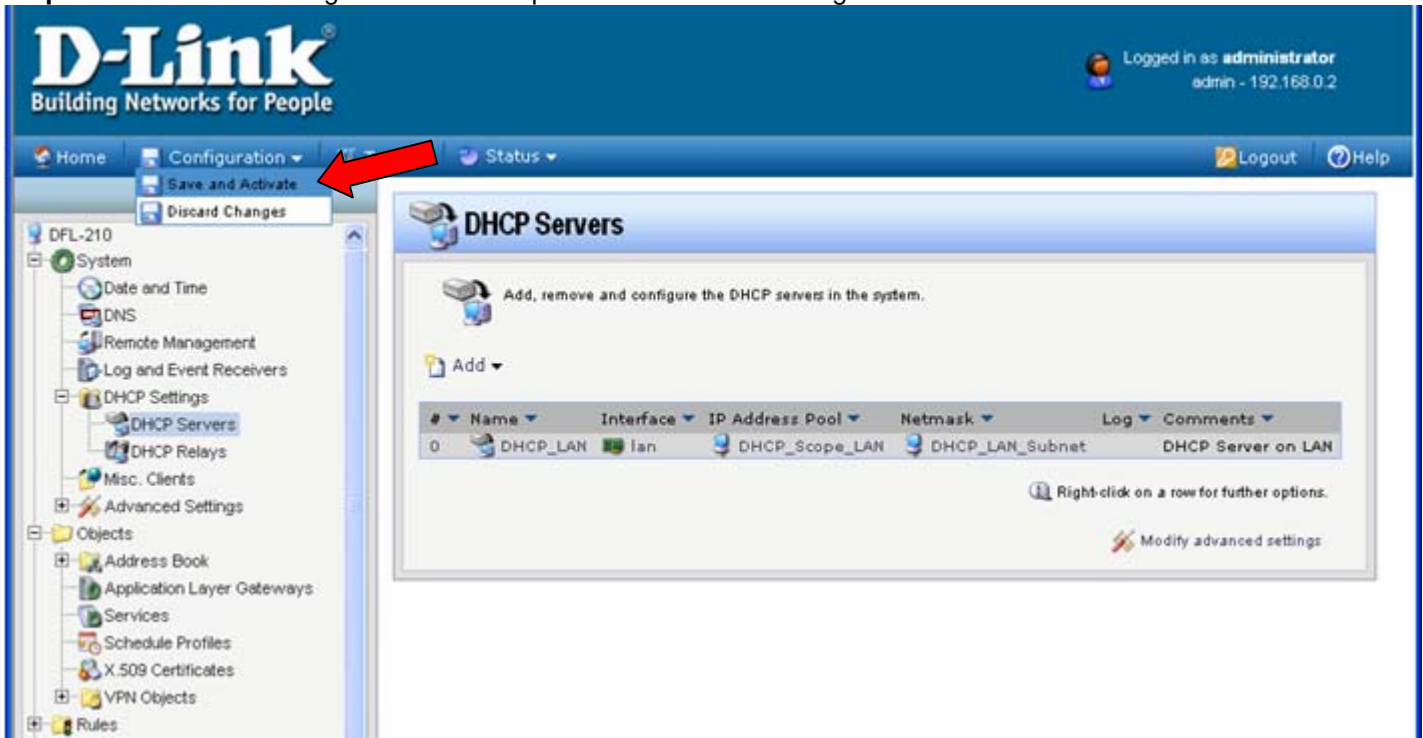
**Step 6.** Specify a name for your DHCP server, e.g. DHCP\_LAN. Select Interface Filter as “LAN” (the LAN interface of your Firewall). Under IP Address Pool select the “DHCP\_Scope\_LAN” and under Netmask the select “DHCP\_LAN\_Subnet” (these are the address entries which you have created before in Steps 3 and 4).



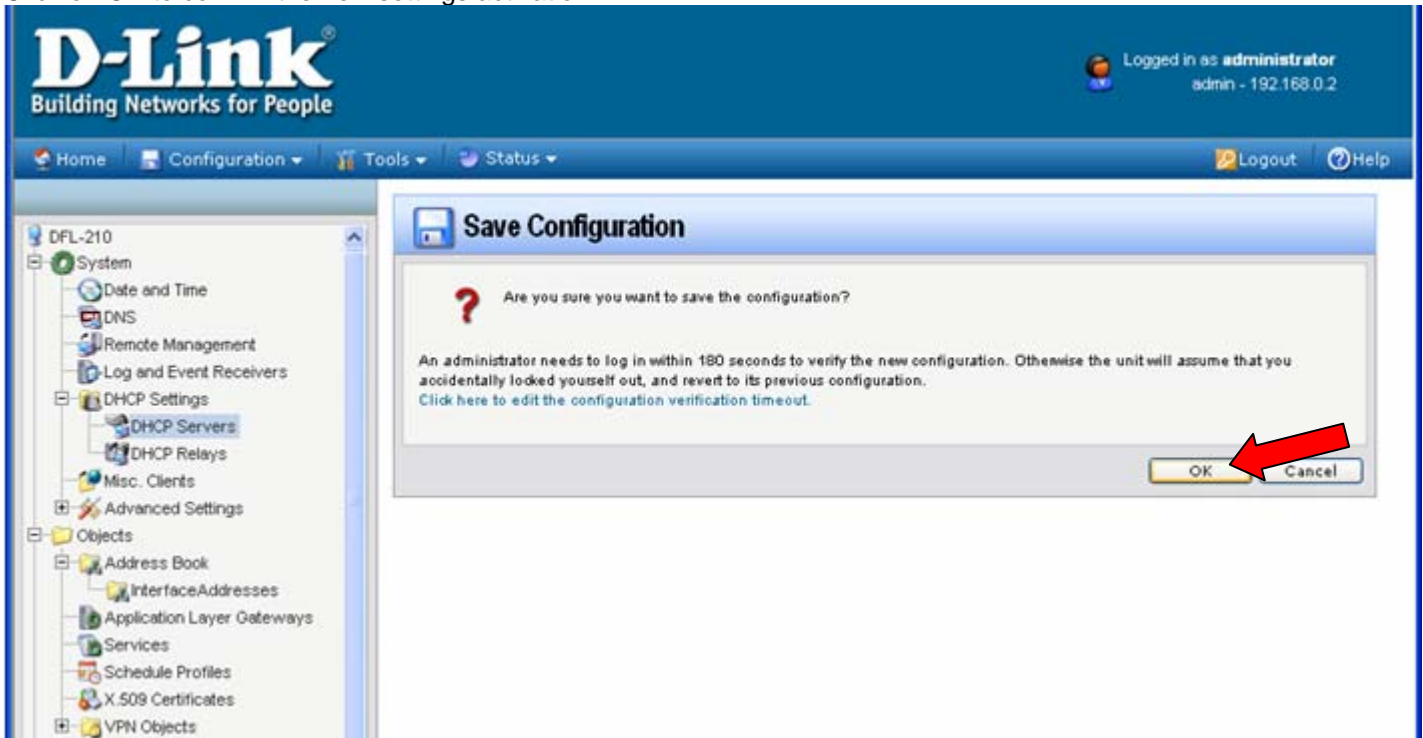
**Step 7.** Click on Options tab and under Default GW select “LAN\_IP” (the IP of the LAN interface of your Firewall). Specifying the Domain name is optional. Under Primary and Secondary DNS select the DNS Server addresses which you should have entered in the Address Book before. The DNS addresses should be provided by your ISP. Click on the OK button.



**Step 8.** Save the new configuration. In the top menu bar click on Configuration and select "Save and Activate".



Click on OK to confirm the new settings activation:



Wait 15 seconds for the Firewall to apply the new settings. Your DHCP Server configuration is now completed.

~ End of Document ~