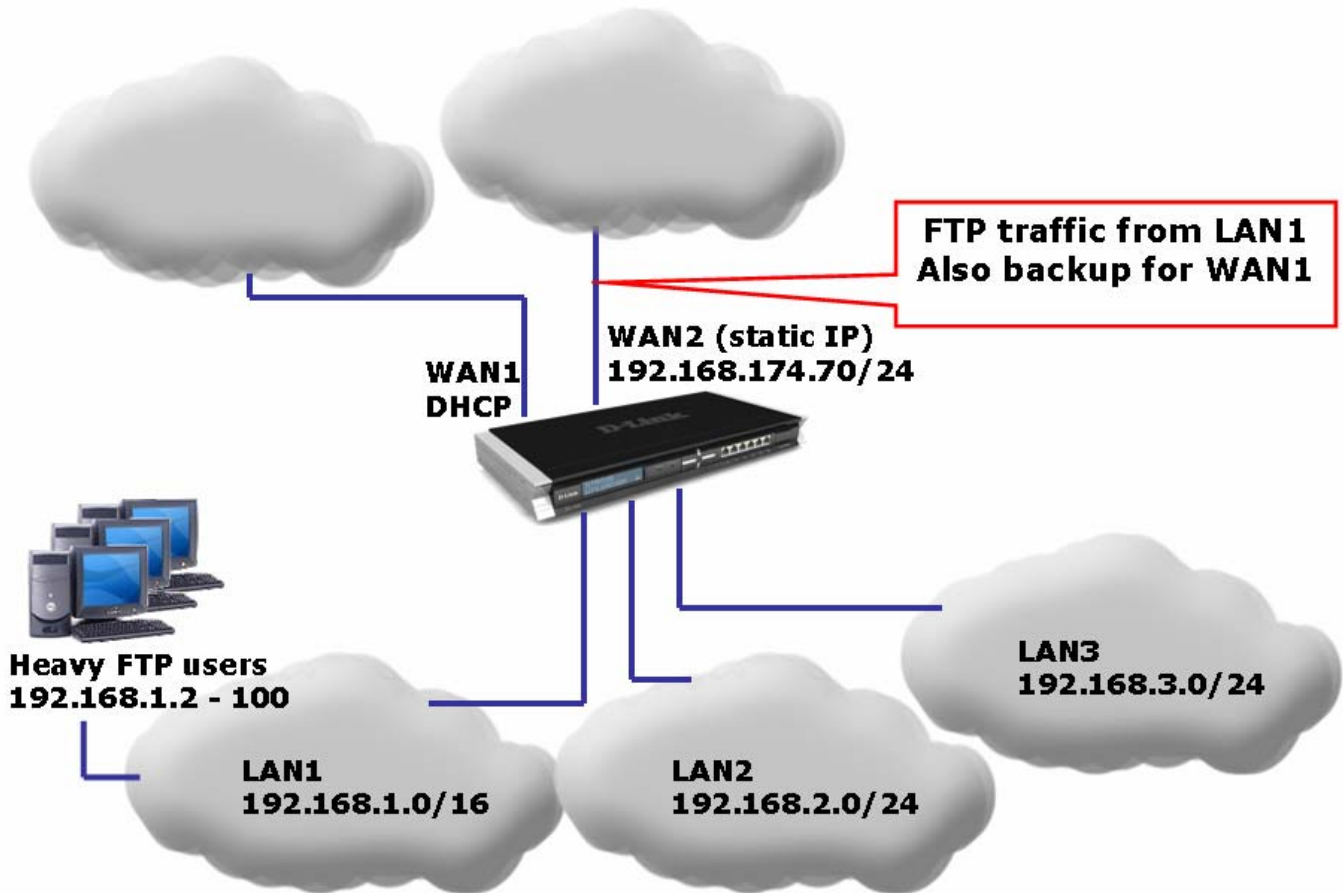


DFL-800/1600/2500 How to setup Load Sharing between WAN ports

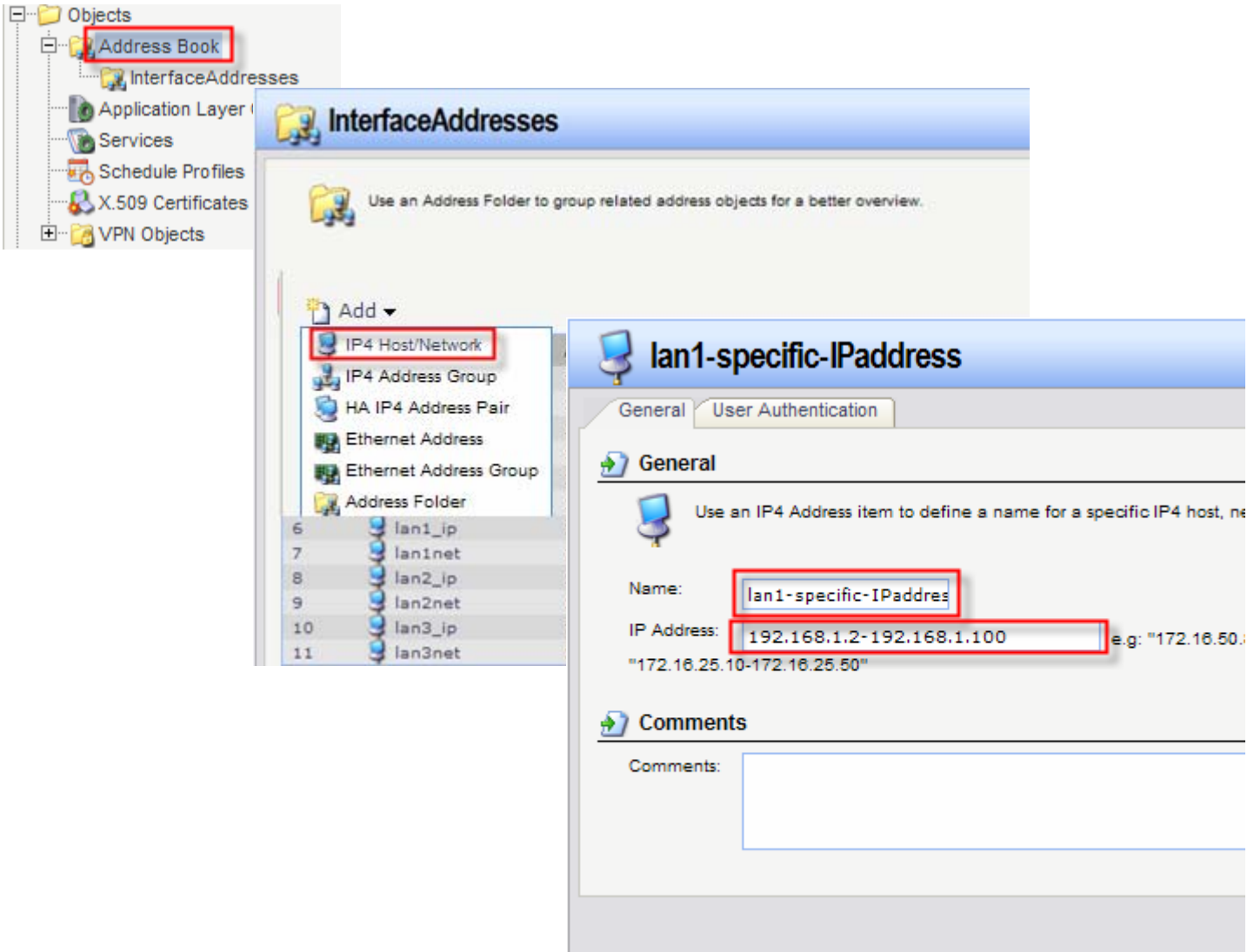
This setup is only applicable to firewalls with multiple WAN ports. Certain traffic (certain applications or/and from certain group or IP addresses) can be redirected through to the additional WAN port(s) (WAN2, WAN3). These ports can also be used as backup connections for the primary Internet link on WAN1.

The below steps describe the configuration where certain traffic (FTP) from certain group of IP's is being redirected through WAN2. WAN2 is also set up as failover link for WAN1.

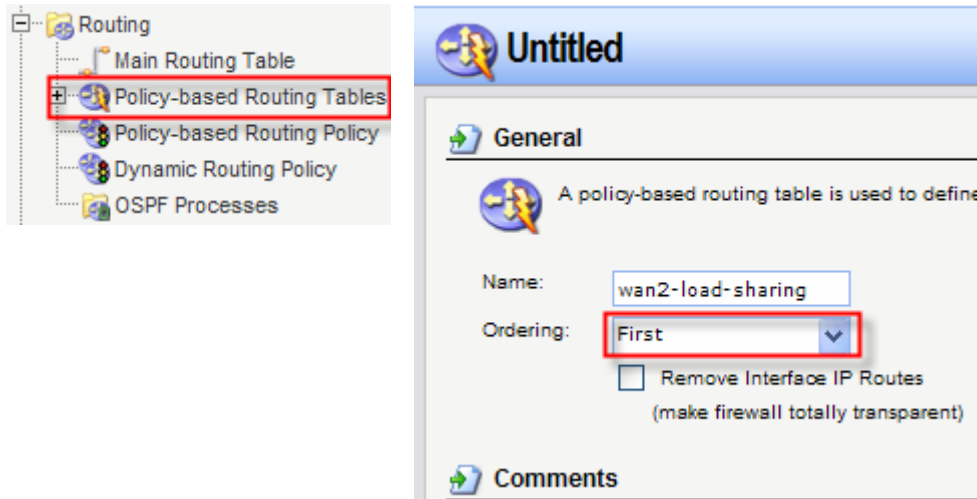


Step 1. Log into the firewall. Configure both WAN ports in accordance with the Internet connection requirements.

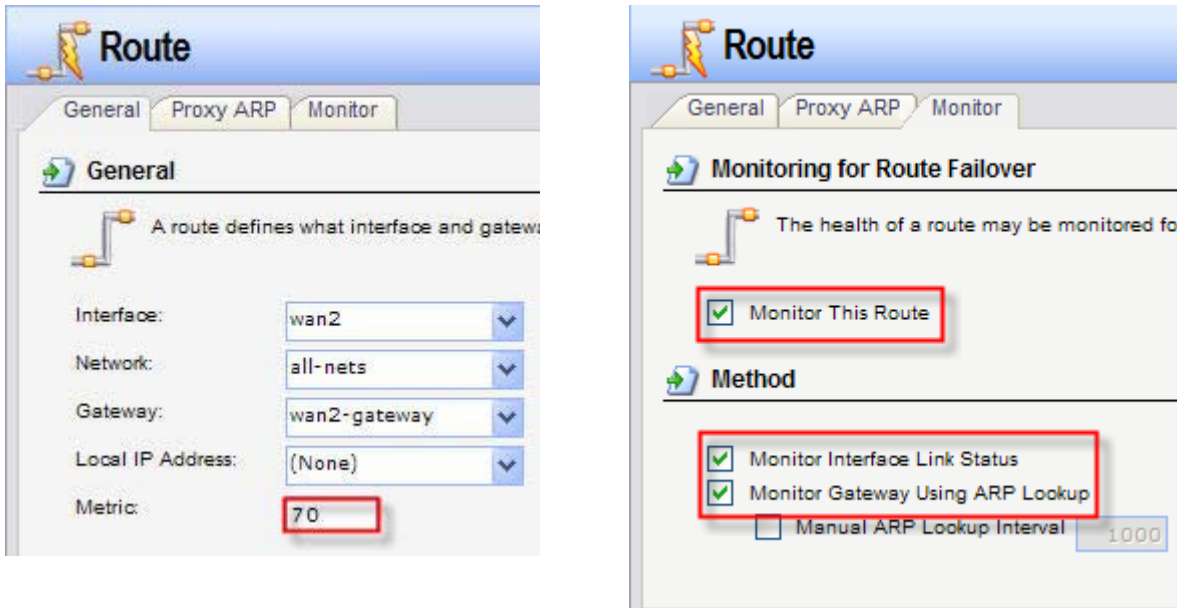
Step 2. Go to Objects > Address Book > Interface Addresses. Create a new object describing the specific IP addresses on LAN1 which will use WAN2 for FTP traffic (LAN1-Specific-IPs).



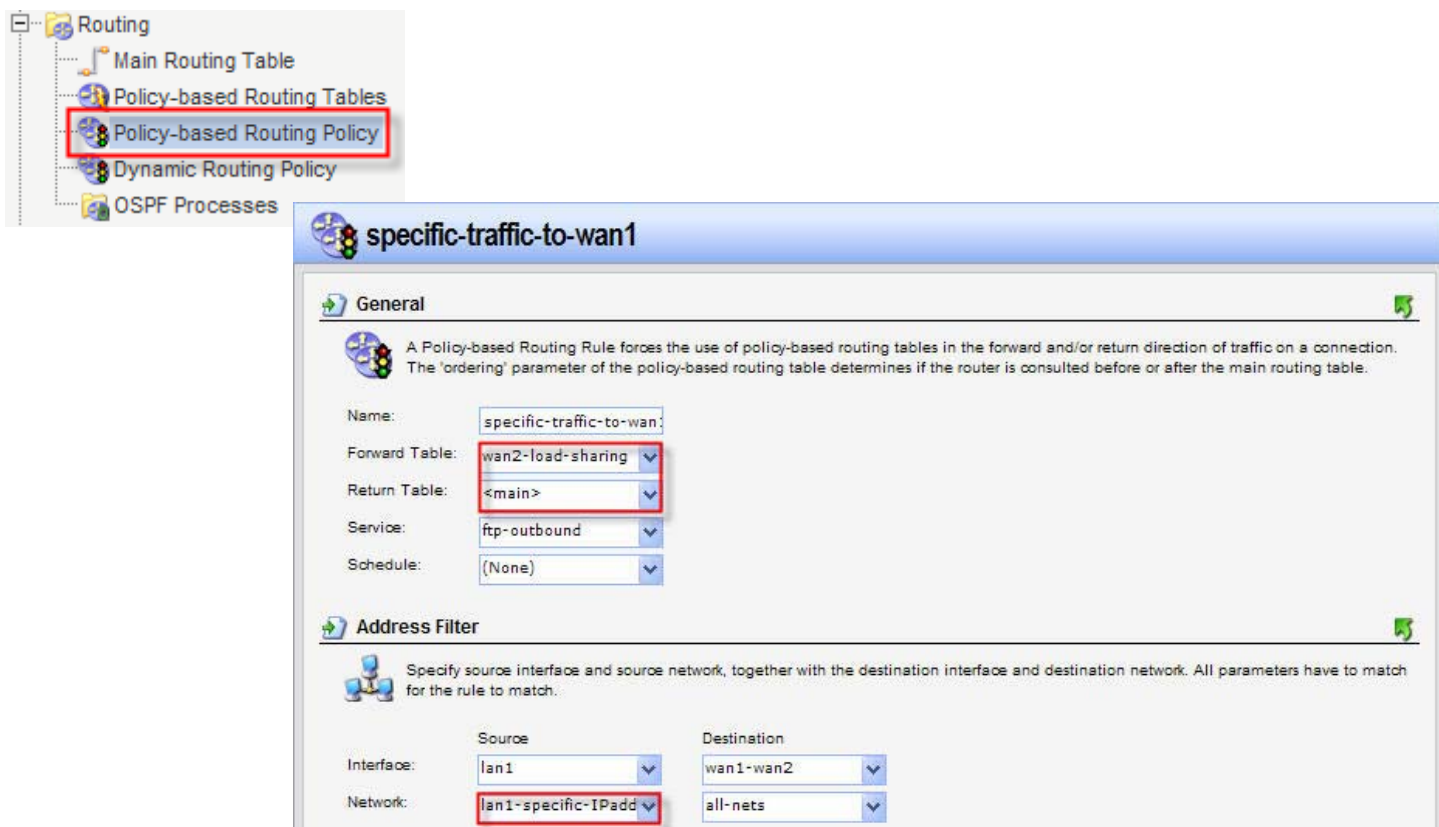
Step 3. Go to Routing > Policy-based Routing Tables. Add a new Table “WAN2-Load-Sharing”. Set its Ordering as “First”.



Step 4. In the new table add a new route for WAN2. Set its Metric to 70. Under “Monitor” tab select the “Monitor This Route” option. Under “Method” select both “Monitor Interface Link Status” and “Monitor Gateway Using ARP Lookup”.



Step 5. Go to Routing > Policy-based Routing Policy. Add a new Rule which will send FTP traffic from LAN1 to WAN2. Select “WAN2-Load-Sharing” as a Forward Table. Return Table - Main. Service - FTP-Outbound. Source Interface set as LAN1, Source Network – “LAN1-Specific-IPs”. Destination Interface set as “WAN1-WAN2 group”.



Step 6. In the top menu bar select Configuration > Save and Activate > OK.

