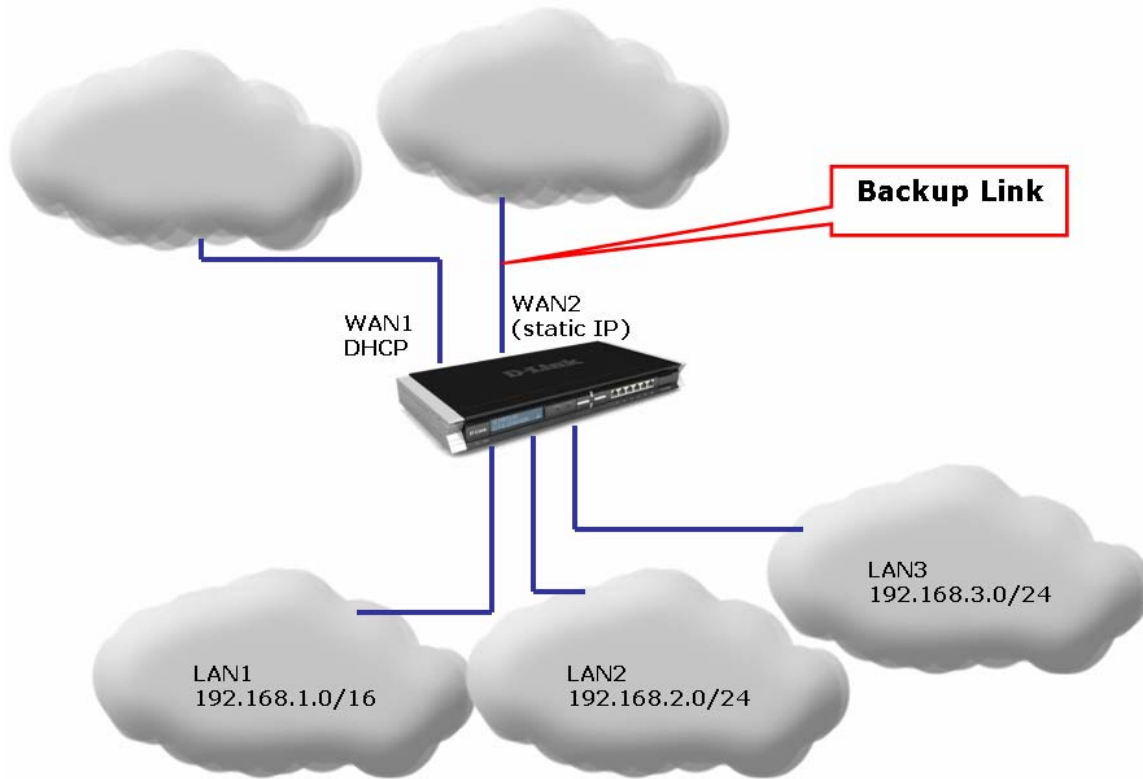


## DFL-800/1600/2500 How to setup WAN connection failover

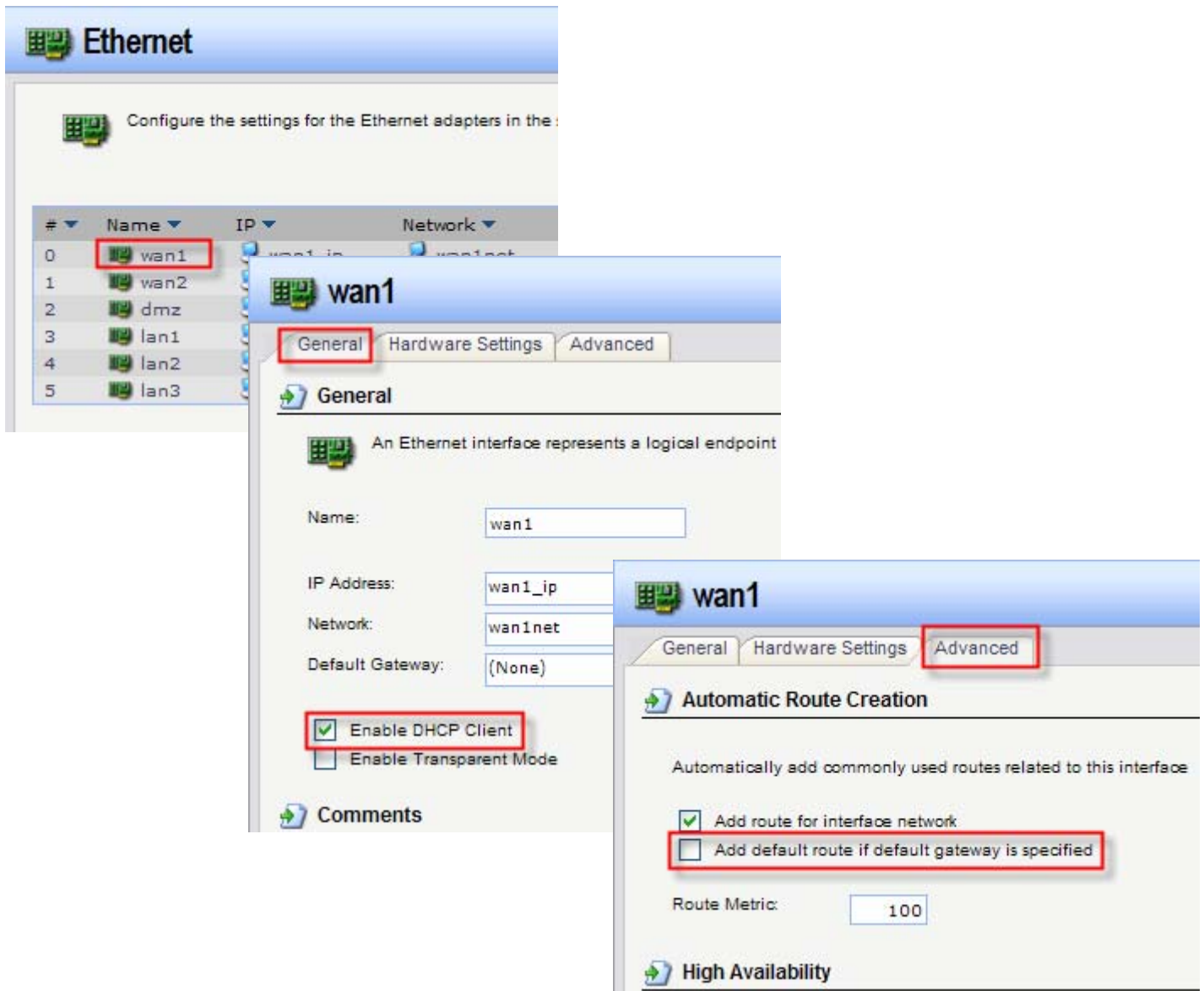
This setup is only applicable to firewalls with multiple WAN ports.  
Additional WAN port(s) (WAN2, WAN3) can be used as backup connections for a primary Internet link on WAN1.

The below steps describe the configuration where WAN2 link is used as a backup for WAN1 link. Whenever the link on WAN1 goes down (physical connectivity or network connectivity), the traffic is automatically redirected through WAN2. As soon as WAN1 comes back up, the traffic is automatically redirected back through WAN1.

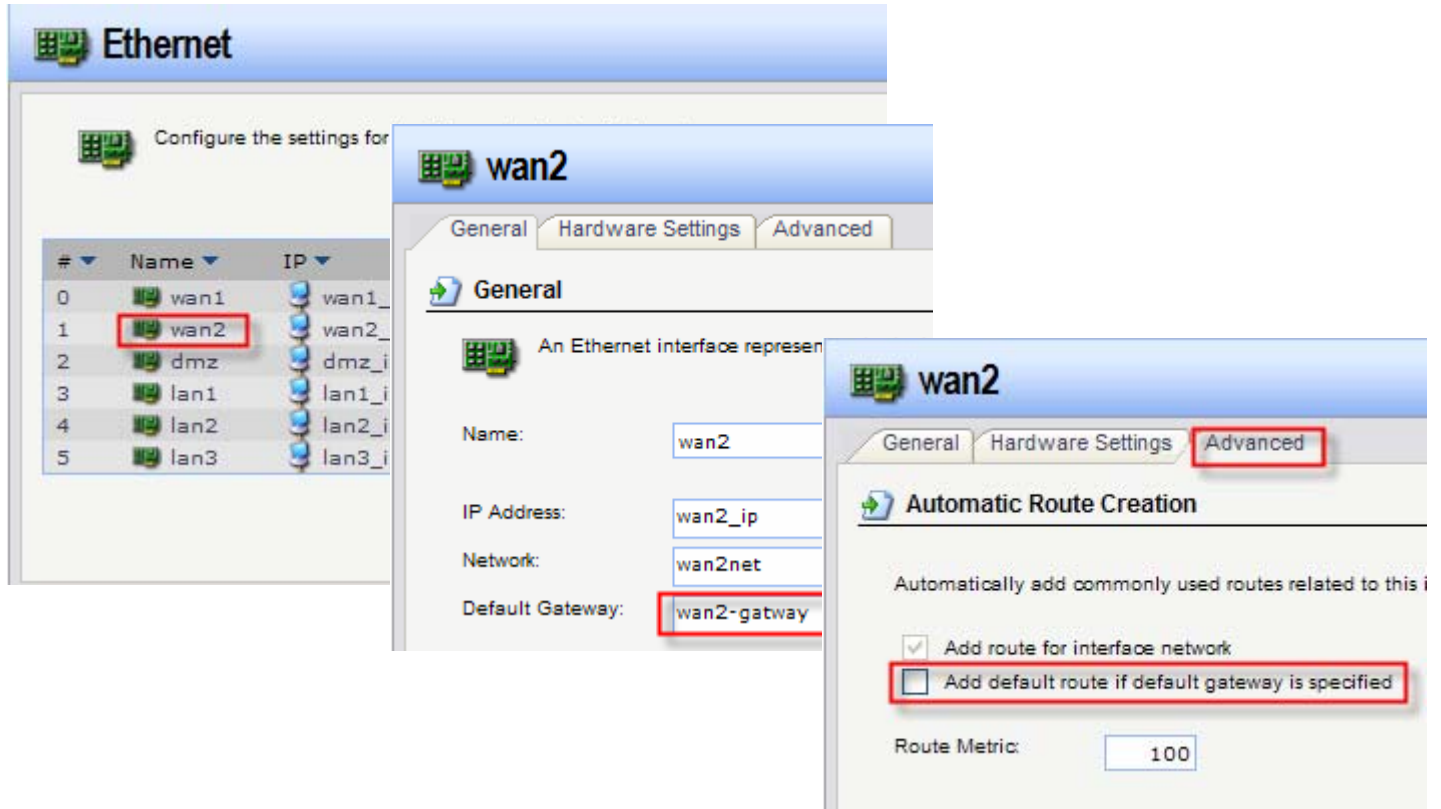


**Step 1.** Log into your firewall. Configure both WAN ports in accordance with the Internet connection requirements. WAN1 and WAN2 can be connected to different Internet Service Providers.

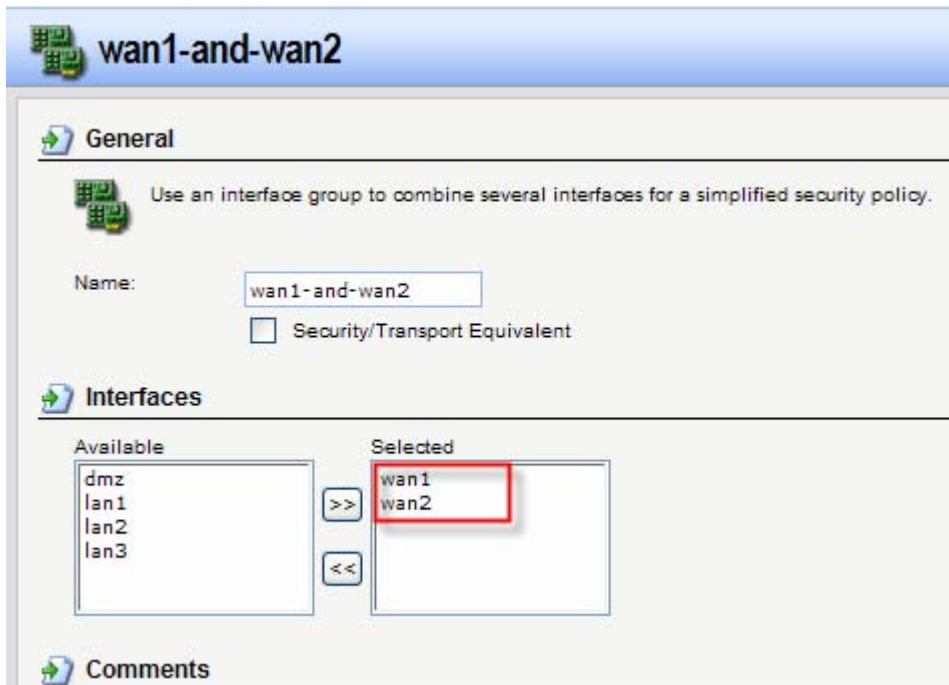
**Step 2.** Go to Interfaces > Ethernet > WAN1. In our example WAN1 is set up as DHCP Client. Go to Advanced tab. Disable the “Add default route if default gateway is specified” option.



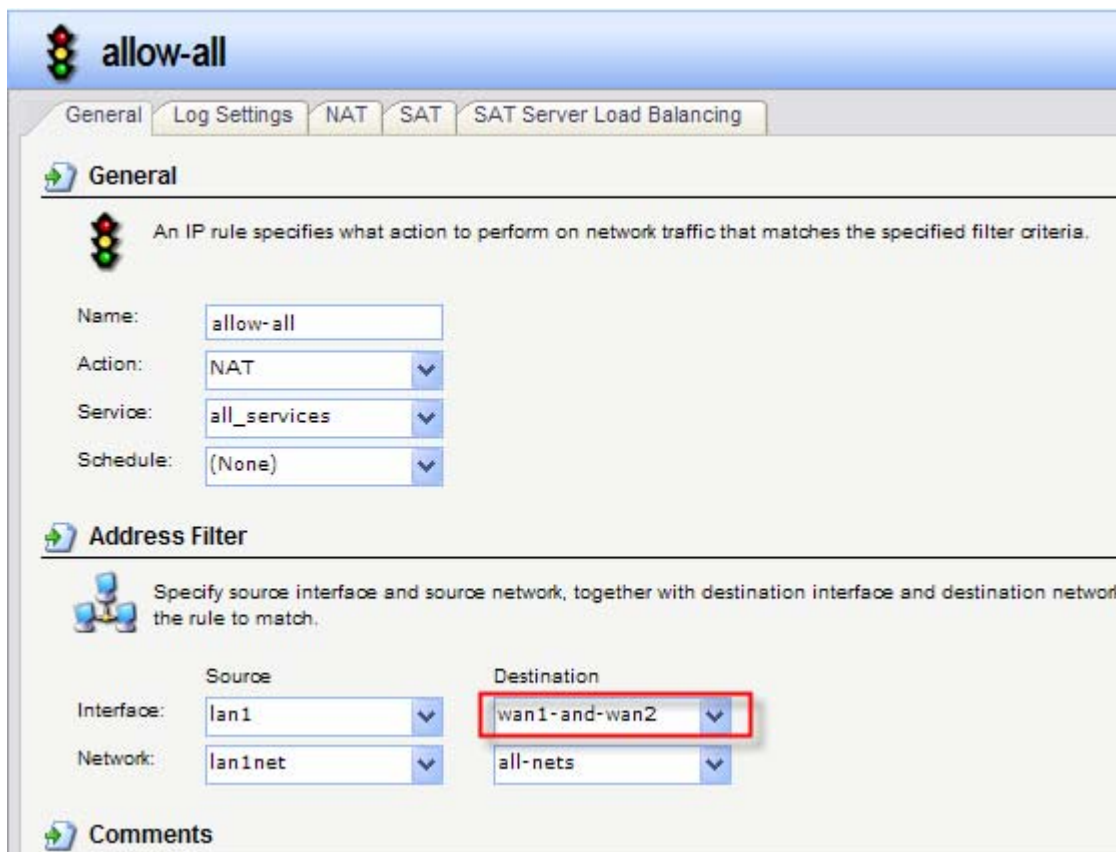
**Step 3.** Select WAN2. In our example it is configured with static IP address. Go to Advanced tab. Disable the “Add default route if default gateway is specified” option.



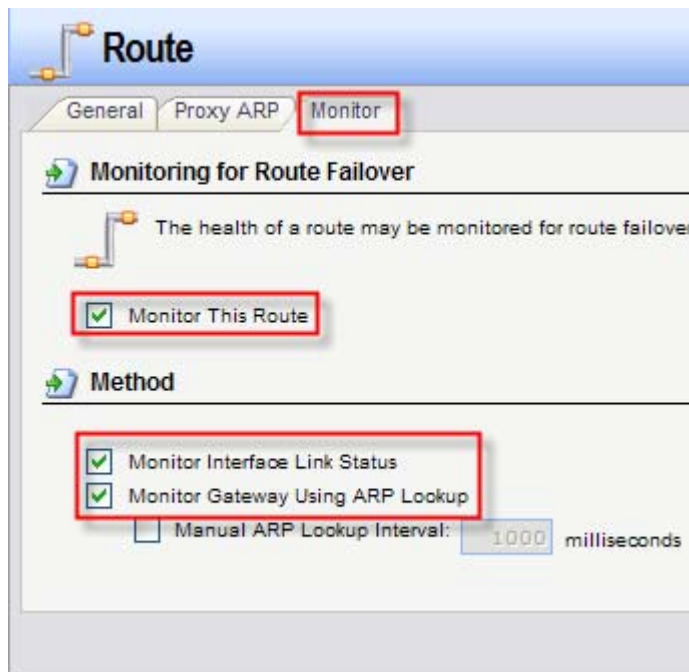
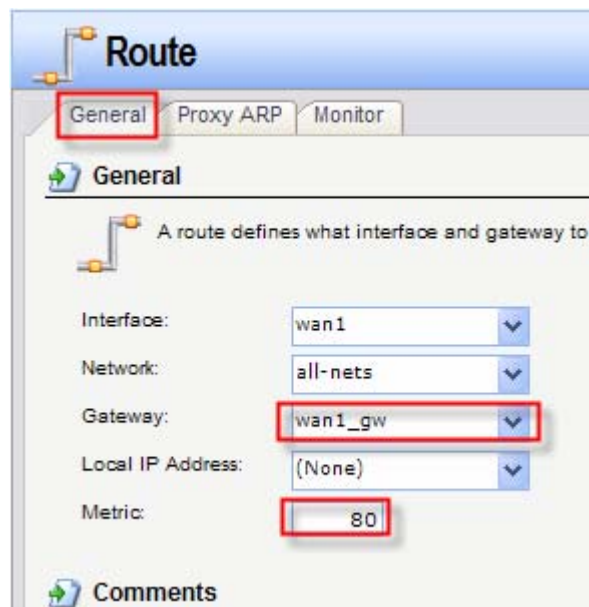
**Step 4.** Go to Interfaces > Interface Groups. Combine WAN1 and WAN2 into a group.



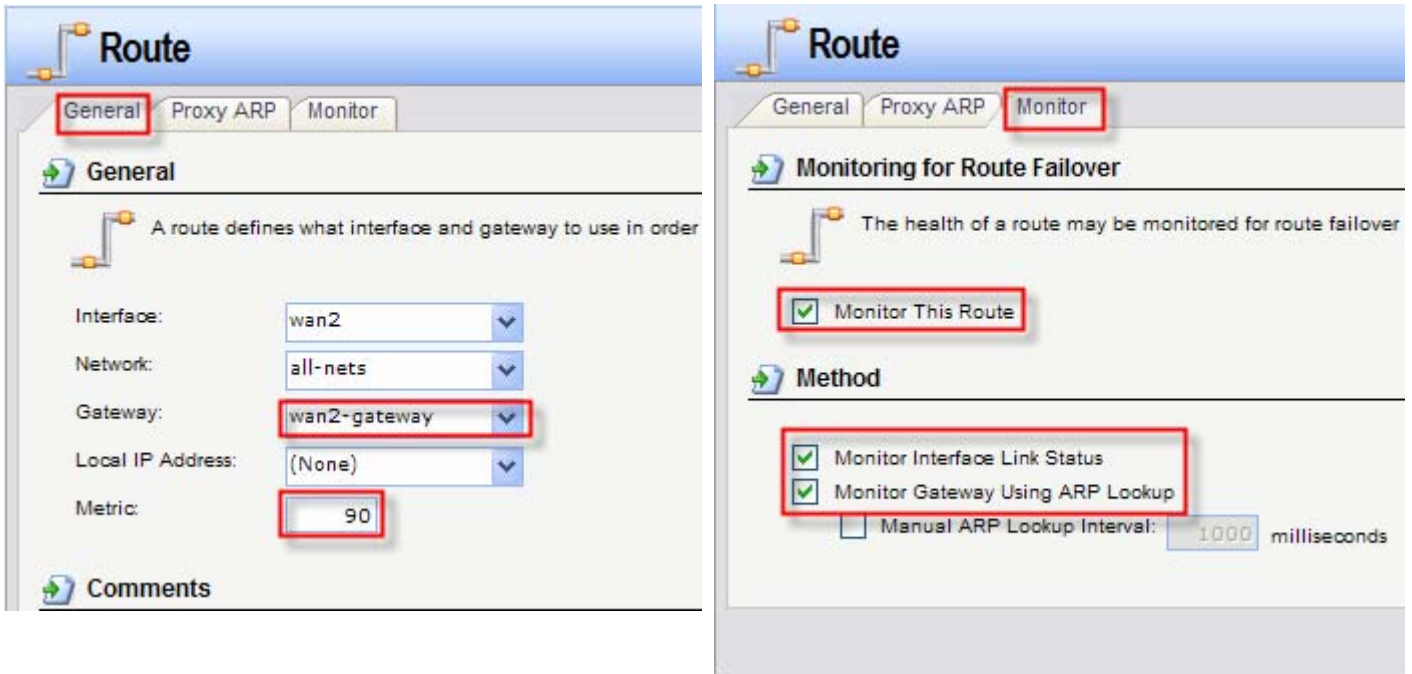
**Step 5.** Go to Rules > IP Rules. Add a new rule “Allow-All” which does NAT for all services (Action – NAT). Set LAN1 as Source and the “WAN1-and-WAN2 group” as Destination.



**Step 6.** Go to Routing > Main Routing Table. Create a new routing rule for WAN1. Interface - WAN1; Network - All-nets; Gateway - WAN1 Default Gateway; Local IP - none. Set it with lower Metric (e.g. 80). Go to Monitor tab and enable the “Monitor This Route” option. Tick “Interface Link Status” – to monitor physical connection status. Tick “Gateway using ARP Lookup” – to monitor network connectivity status.



**Step 7.** Create a routing rule for WAN2. Set Metric higher than WAN1 (e.g. 90). Go to Monitor tab and enable the “Monitor This Route” option.



**Step 8.** In the top menu bar select Configuration > Save and Activate > OK.

