

D-Link DFM-562IS HSFi PCI MODEM

Conexant HSFi

User's Guide

FCC Requirements

This equipment complies with Part 68 of the FCC Rules. On the bottom of this equipment is a label that contains, among other information, the FCC Registration Number and Ringer Equivalence Number (REN) for this equipment. IF REQUESTED, THIS INFORMATION MUST BE GIVEN TO THE TELEPHONE COMPANY.

The REN is useful to determine the quantity of devices you may connect to your telephone line and still have these entire devices ring when your telephone number is called. In most areas, the sum of the REN's of all devices connected to one line should not exceed five (5.0). To be certain of the number of devices you may connect to your line, as determined by the REN, you should contact your local telephone company to determine the maximum REN of the area you are calling from. If your telephone equipment causes harm to the telephone network, the Telephone Company may discontinue your service temporarily. If possible, they will notify you in advance. But if the advanced notice is failed, you will be notified as soon as possible. You will be informed of your right to file a complaint with the FCC.

Your telephone company may change in its facilities, equipment, operations or procedures that could affect the proper functions of your equipment. If this occurs, you will be notified in advance to give you an opportunity to maintain uninterrupted telephone service.

If you experience trouble with this telephone equipment, please contact the following address and phone number for information on obtaining service or repairs. The Telephone Company may ask you to disconnect this equipment from the network until the problem is solved or until that the equipment is not detected malfunctioning. This equipment may not be used on coin service provided by the Telephone Company. Connection to party lines is subject to state Tariffs.

Federal Communications Commission

Radio Frequency Interference Statement.

Note: This equipment has been tested and found to comply with the limitation for a class B digital device pursuant to Part 15 of the FCC Rules. These restrictions are designed to provide reasonable protection against harmful interference when the equipment is operated in a residential installation. This equipment generates, uses, and can radiate radio frequency energy and if not installed and used in accordance with the instruction manual may cause harmful interference to radio communications. However, there is no guarantee that interference will not occur in a particular installation. If the equipment does cause harmful interference to radio or television reception, which can be determined by tuning the equipment off and on, the user is suggested to try to correct the interference by one or more of the following measures:

- Reorient or relocate the receiving antenna.
- Increase the distance between the equipment and receiver.
- Connect the equipment into an outlet on a circuit different from that to which the receiver is connected. Consult the dealer or an experienced radio TV technician for help.

Notices:

- (1) The changes or modifications not expressly approved by the party responsible for compliance could void the user's authority to operate the equipment.
- (2) Shielded interface cables and AC power cord if any must be used in order to comply with the emission limits.

Notices to Australian users:

The modem card must only be used in a data terminal equipment (DTE) e.g. computer, that has a screw down cover (lid). As unsafe voltages (TNV) exist on the modem card, disconnect the modem card from the telephone line while the cover (lid) of the DTE (computer) is removed.

Installation of the modem card in a DTE (computer) which does not require a tool to open the cover (lid) will render the permit void.

Disconnect the telephone line before opening the cover (lid) of the DTE (computer). Do not connect the customer equipment to the telephone line while the cover (lid) of the DTE (computer) is open.

WARNING
ONLY CONNECT EQUIPMENT WITH A TELECOMMUNICATIONS COMPLIANCE LABEL

WARNING
FOR SAFETY REASONS, ONLY CONNECT EQUIPMENT WITH A TELECOMMUNICATIONS COMPLIANCE LABEL. THIS INCLUDES CUSTOMER EQUIPMENT PREVIOUSLY LABELLED PERMITTED OR CERTIFIED.

Modems connected to the Australian telecommunications network must be marked in accordance with the Labeling Notice. This modem has been specifically configured to ensure compliance with the ACA Standards. Do not adjust your modem or software outside the values indicated as below. To do so would result in your modem being operated in a non-compliant manner.

Modem Commands:

<u>Command</u>	<u>Default</u>	<u>Permissible Range</u>
ATA	-	Do not use
ATB	B0	Do not set to B1
AT&G	&G0	&G2
AT&P	&P0	&P1
ATSn	see table below	
<u>S register</u>	<u>Default</u>	<u>Permissible Range</u>
s6	2	2 to 6

Call Attempts/Retries:

Applications software shall be configured so that no more than 3 attempts are made to establish a connection to a given number (Note: if the modem can detect service tones, up to 10 attempts can be made). If the call sequence is unsuccessful, there shall be a delay of at least 30 minutes before attempting to call the number again.

Failure to set the modem and any application software used with the modem, to the values shown as above will result in the modem being operated in a non-compliant manner. Consequently, this would be in violation of the Labeling Notice for this equipment, and the Telecommunications ACT 1997 prescribes penalties for the connection of non-compliant equipment.

CONTENTS

Chapter 1 Introduction.....	5
1.1 Introduction.....	5
1.2 Packing.....	5
1.3 Features.....	5
Chapter 2 Specifications.....	6
Chapter 3 Hardware Installation	7
Chapter 4 Software Installation	8
4.1 Windows 95.....	8
4.2 Windows 98.....	11
4.3 Windows ME.....	19
4.4 Windows NT 4.0	23
4.5 Windows 2000.....	38
4.6 Windows XP	42
Chapter 5 Select Modem Country.....	44
5.1 Windows 95.....	44
5.2 Windows 98/ME	46
5.3 Windows 2000.....	49
5.4 Windows NT4.0	50
5.5 Windows XP	53
Chapter 6 Diagnostics.....	56
6.1 Windows 95/98/ME	56
6.2 Windows 2000.....	58
6.3 Windows XP	61
Chapter 7 Uninstalling Procedures	64
7.1 Windows 95.....	64
7.2 Windows 98/ME	66
7.3 Windows NT4.0	68
7.4 Windows 2000.....	70
7.5 Windows XP	72

Chapter 1 Introduction

1.1 Introduction

Thank you for selecting the *D-Link DFM-562IS HSF-i PCI Modem* . It provides the modem function under Windows GUI interface supplied by Windows. All of the above advances come from the special design of Windows control function, which move the dominating of control signal of modem from modem body to the Windows system. Therefore and it makes the D-Link DFM-562IS HSF-i PCI Modem work more smoothly than traditional RS-232 Modem. If you are just working under Windows system, D-Link DFM-562IS HSF-i PCI Modem is the best product you need to work with.

1.2 Packing

The D-Link DFM-562IS HSF-i PCI Modem series include the following accessories:

- Internal modem card
- User's manual
- Driver and Application Software (CD-ROM)
- Phone Cord

1.3 Features

- Modem (controlless)
- ITU 56K V.92, V.90 Standard
- PCI V2.1 compliant
- Windows 95/98/ME/NT4.0/2000/XP compatible
- Software upgradeable

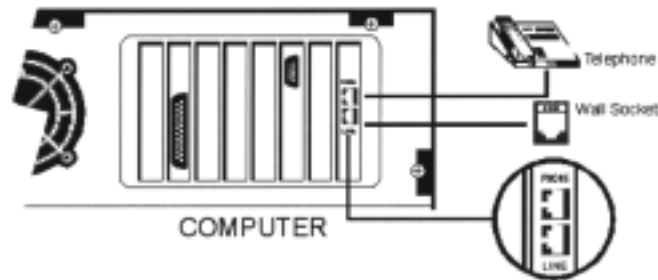
Chapter 2 Specifications

Specifications:

Line data rate	56000,54000,52000,50000,48000,46000,44000,42000, 40000,38000,36000,34000,33600,31200,28800,26400, 24000,19200,16800,14400,12000,9600,7200,4800,2400 ,1200,600,300
Modem protocol	ITU-T V.92,V.90/K56flex/ITU-T V.34bis/V.34/V.32bis/V.32/V.22bis/V.22/V.21/V.23 Bell 212A/103,V.80,V8/V.8bis
Chip Set	Conexant HSFi-CX11251-11
Interface	PCI BUS
Fax Compatibility	14.4k bps Send/Receiver G3 compatible
Error Correction	MNP2-4,V.42
Data Compression	V.44 , MNP 5, V.42bis
Max. DTE data rate	115200bps
PnP	Build in
Modem operation	Dial up
Line interface	RJ-11 Line/Phone
Software Compatibility	AT command set Compatible
System Requirement	Pentium CPU 233+, 64M RAM+, L2 cache 256K
System compatibility	OS Windows 95/98/ME/NT4.0/2000/XP

Chapter 3 Hardware Installation

1. Remove the computer's case.
2. Insert the modem card into a spare PCI expansion slot.
3. Close the case.
4. Unplug the telephone from the wall socket, then plug the telephone into the socket on the back of the modem marked PHONE.
5. Plug the phone cord supplied into the socket on the back of the modem marked LINE.
6. Plug the other end of the cord into the wall socket.
7. Proceed to Software installation.

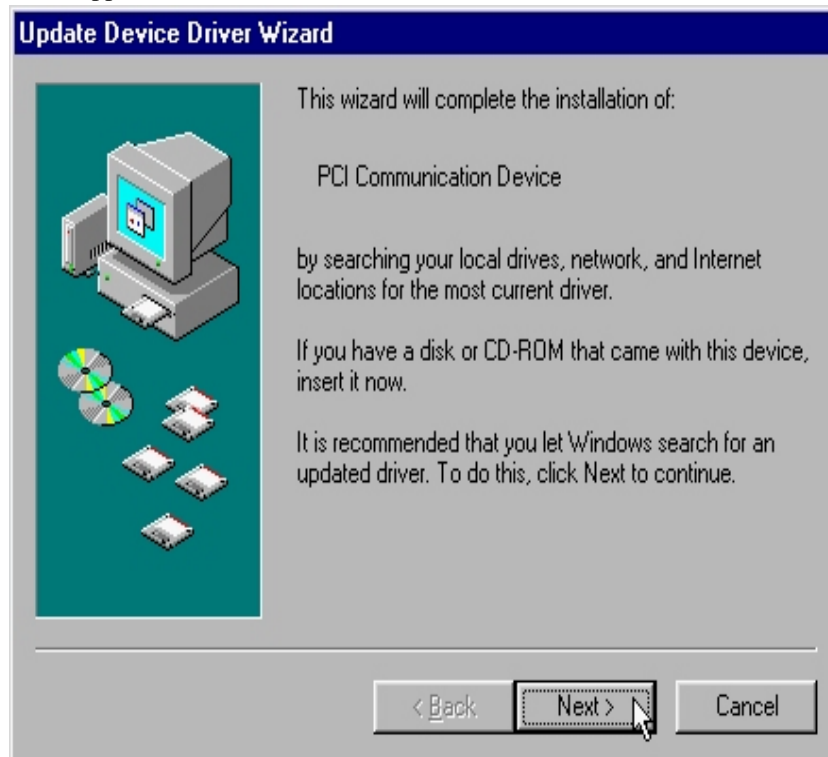


Chapter 4 Software Installation

Power on your computer then start Windows 95/98/ME/NT4.0/2000/XP. Windows 95/98/ME/NT4.0/2000/XP will detect the modem automatically.

4.1 Windows 95 B (OSR2)

1. When you see the message of *PCI Communication Device* shown on the screen. However, it may vary with the type of the Mother board. Please insert the driver CD supplied and click *Next*.



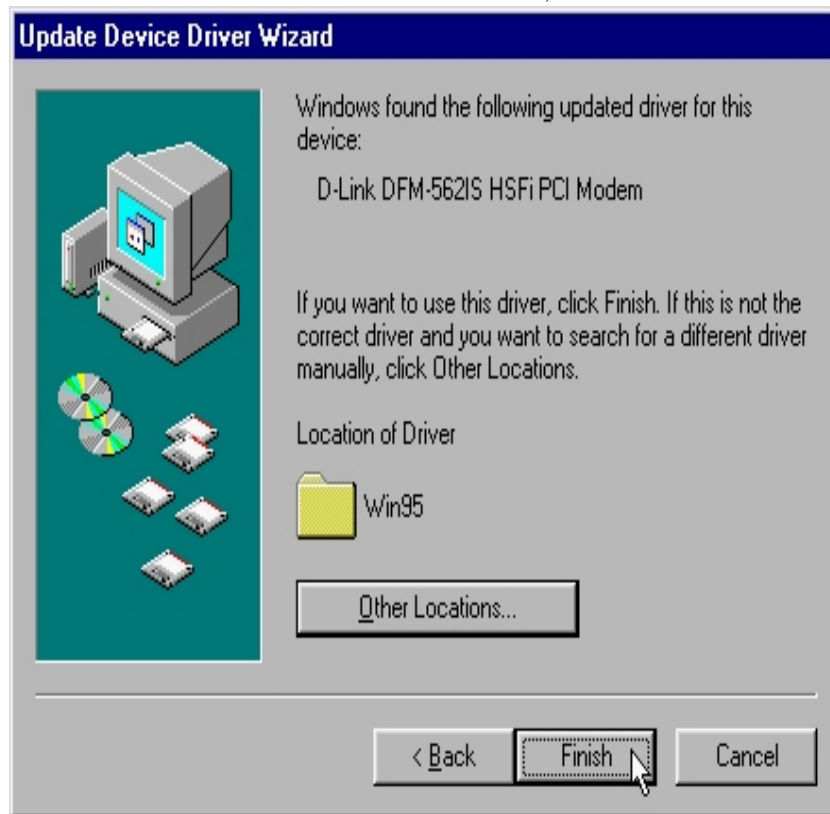
2. Click **Other Locations...** to search for the correct driver and location.



3. Select the location of **F:\Win95** (F is the letter of your CD-ROM drive) and click **OK**.



- Windows 95 will find the driver shown as below, then click **Finish**.



- Click **OK**.



- Type **F:** \WIN95 or use the **Browse** to find the location of the modem driver, then click **OK**.



4.2 Windows 98

1. The message of *PCI Communication Device* will appear. However it may vary with the type of your mother board. Please insert the driver CD supplied and click *Next*.



2. Select *Search for the best driver for your device [Recommended]* and click *Next*.



3. Select *Specify a location* and type *F:\Win98* (F is the letter of CD-ROM drive) and click *Next* to continue.



4. Windows will find the driver for *D-Link DFM-562IS HSFi PCI Modem* and click *Next*.



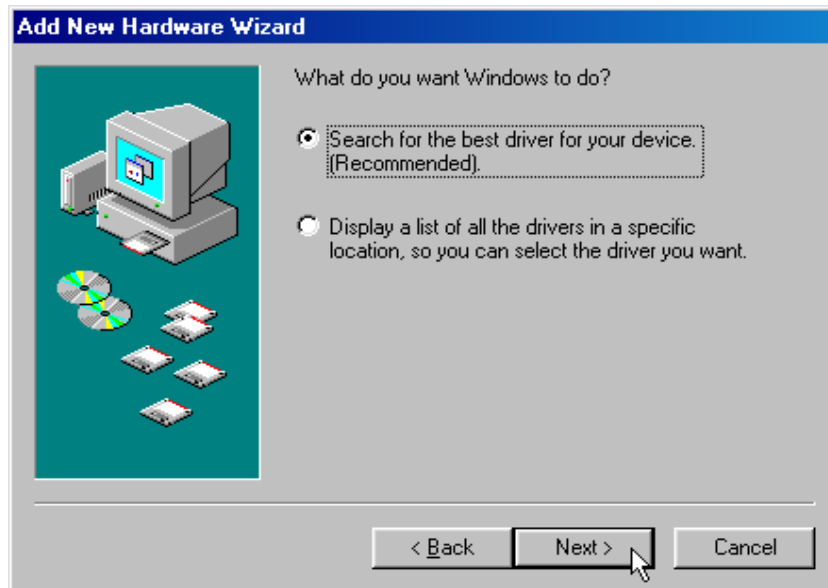
5. Click **Finish** to end this installation procedure.



6. The message of **D-Link DFM-562IS HSFi PCI Modem** will appear. However it may vary with the type of your mother board. Please insert the driver CD supplied and click **Next**.



7. Select *Search for the best driver for your device [Recommended]* and click *Next*.



8. Select *Specify a location* and type *F:\Win98* (F is the letter of CD-ROM drive) and click *Next* to continue.



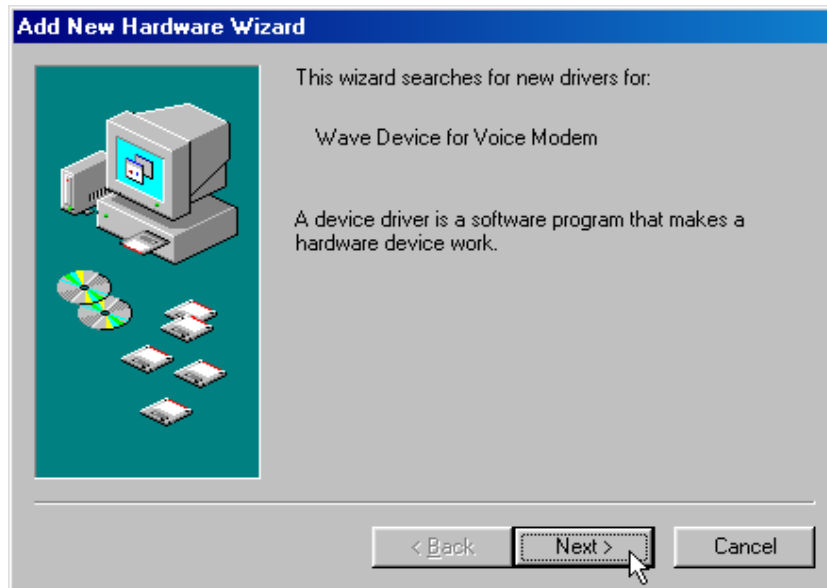
- Windows will find the driver for *D-Link DFM-562IS HSFi PCI Modem* and click *Next*.



- Click *Finish* to end this installation procedure.



11. The message of *Wave Device for Voice Modem* will appear. However it may vary with the type of your mother board. Please insert the driver CD supplied and click *Next*.



12. Select *Search for the best driver for your device [Recommended]* and click *Next*.



13. Select *Specify a location* and type *F:\Win98* (F is the letter of CD-ROM drive) and click *Next* to continue.



14. Windows will find the driver for *Voice Modem Serial Wave Device* and click *Next*.



15. Click **Finish** to end this installation procedure.



4.3 Windows ME

1. The message of *PCI Communication Device* will appear. Select *Specify the location of the driver [Advanced]* and click *Next*.



2. Select *Search for the best driver for your device. [Recommended]*, then Select *Specify a location* and type *I:\WinME* (I is the letter of CD-ROM drive) and click *Next* to continue.



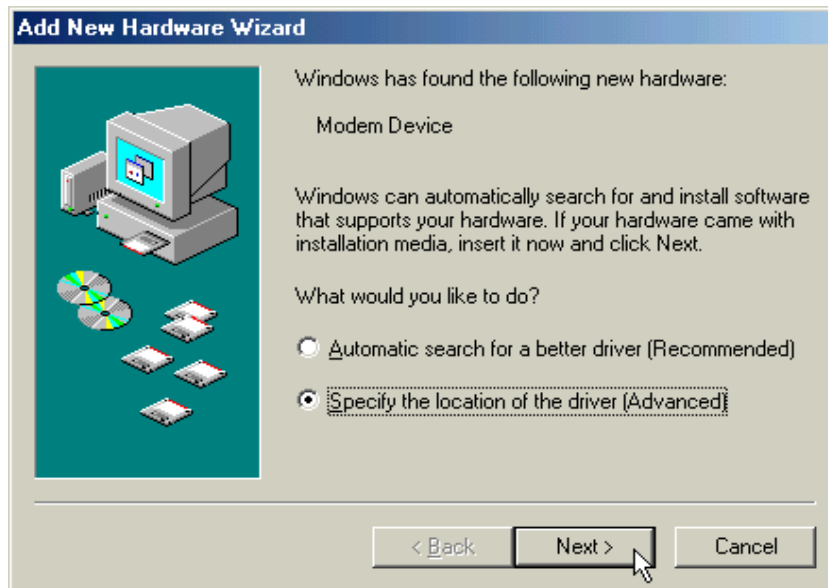
- Windows will find the driver for **D-Link DFM-562IS HSFi PCI Modem** and click **Next**.



- Click **Finish** to end this installation procedure.



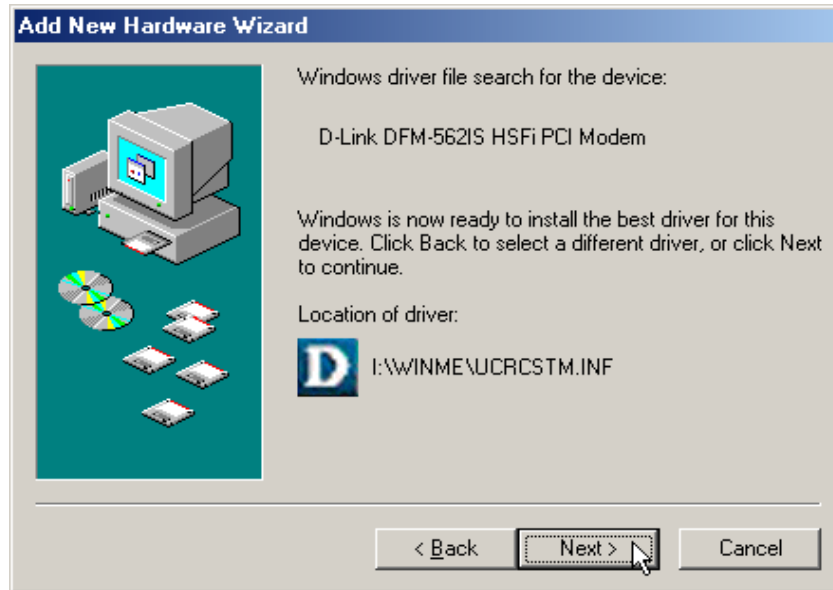
- The message of **Modem Device** will appear. Select **Specify the location of the driver [Advanced]** and click **Next**.



- Select **Search for the best driver for your device. [Recommended]**, then Select **Specify a location** and type **I:\WinME** (I is the letter of CD-ROM drive) and click **Next** to continue.



7. Windows will find the driver for *D-Link DFM-562IS HSFi PCI Modem* and click *Next*.



8. Click *Finish* to end this installation procedure.

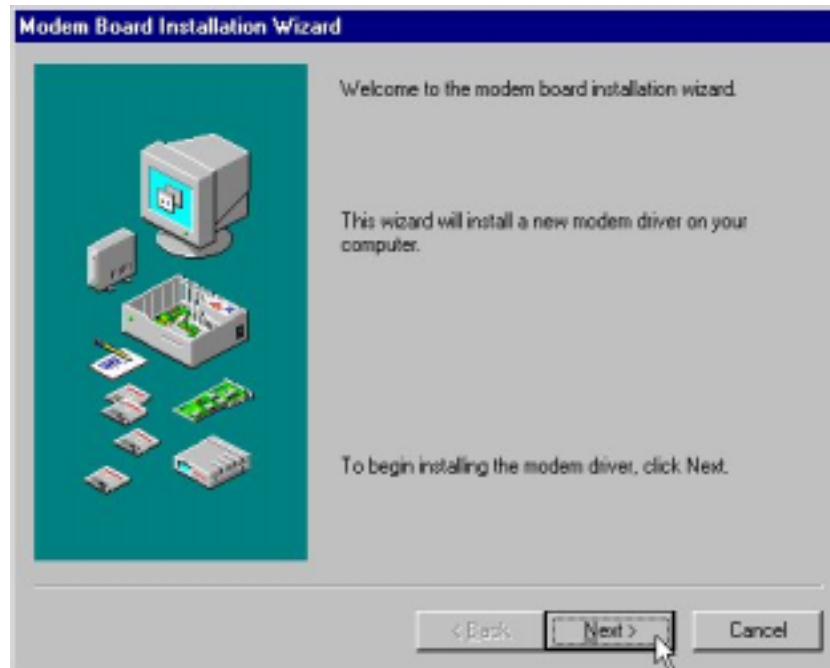


4.4 Windows NT 4.0

1. Please insert the driver CD supplied. Then click **Start | Run** on the desktop and use **Browse** to open the file of **F:\WinNT4\Setup.exe** (F is the letter of CD-ROM drive), then click **OK**.



2. Click **Next**.

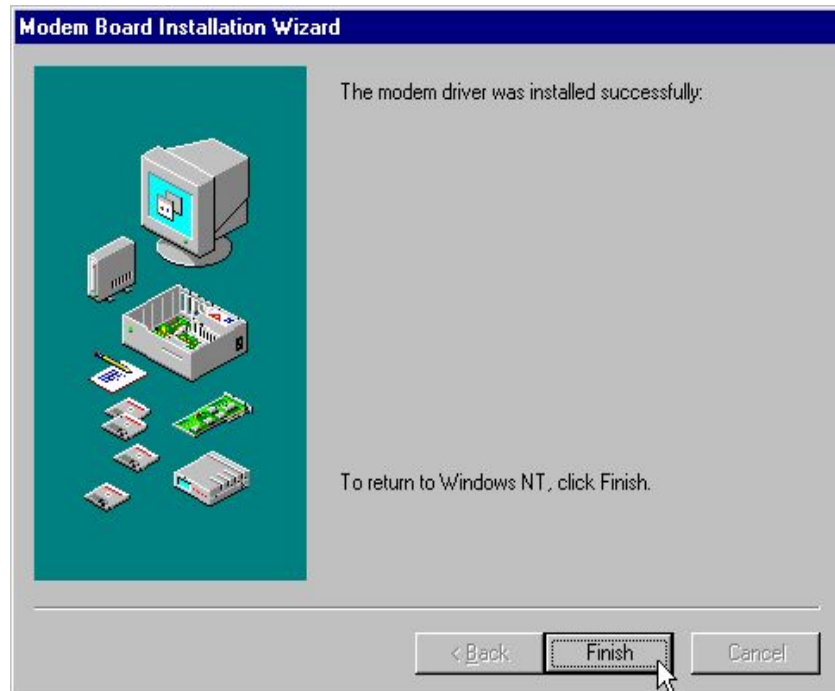


3. Click *Next*.



4. The message of *The modem driver was installed successfully* and clicks *Finish*.

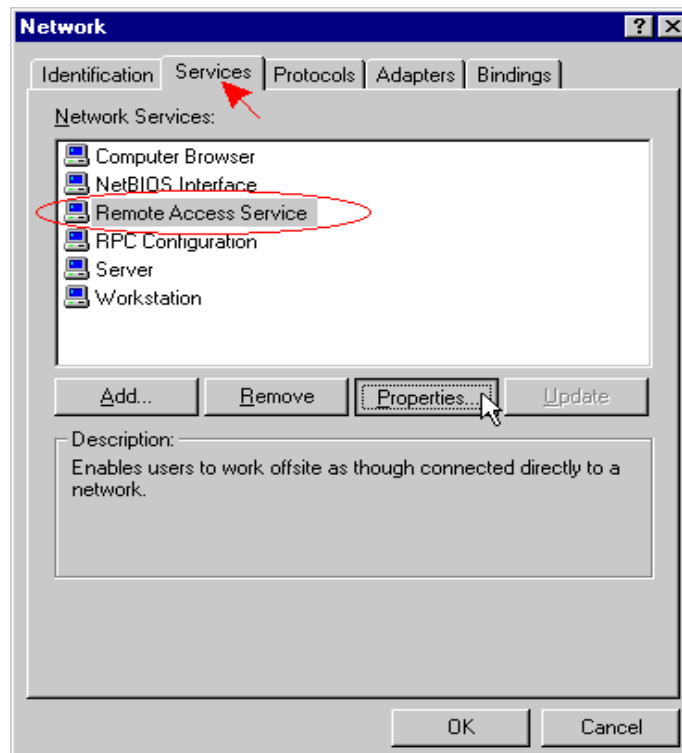
Note: You must restart your computer to enable the modem driver.



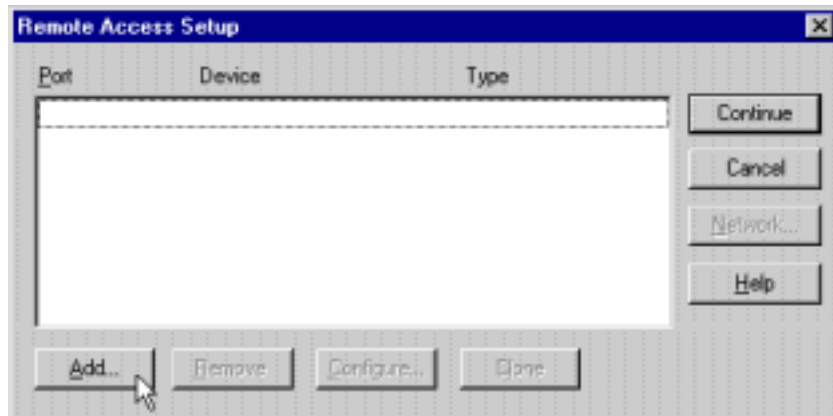
5. If you want to use *Dial-Up Networking*, please do as following. After restarting your computer, click *Start | Settings | Control Panel* on the desktop and double-click on the *Network* icon.



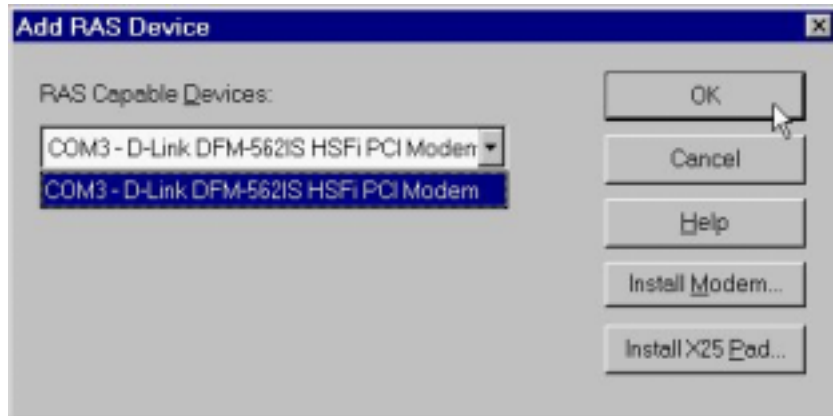
6. Click on the *Services* tab and select *Remote Access Service*, then click *Properties*. If you can't see *Remote Access Service* on the screen click *Add* to install *Remote Access Service*.



7. Click on the **Add** button to add the *D-Link DFM-562IS HSFi PCI Modem*. If there is any other modem in the list, please click **Remove** first.



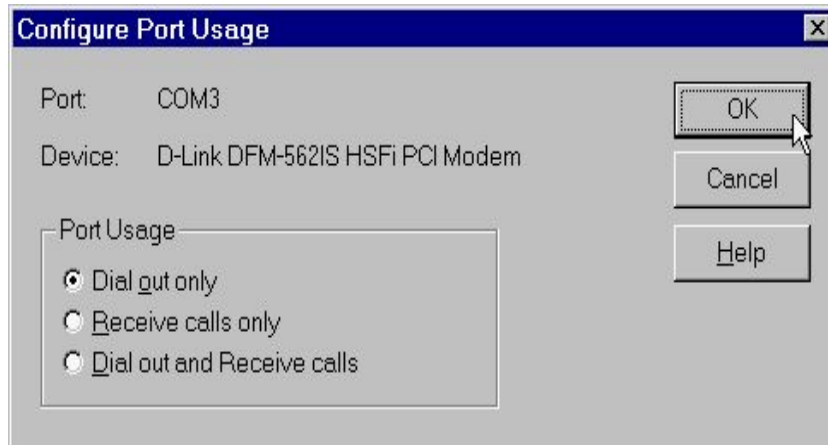
8. Select *COM3-D-Link DFM-562IS HSFi PCI Modem*, then click **OK**.



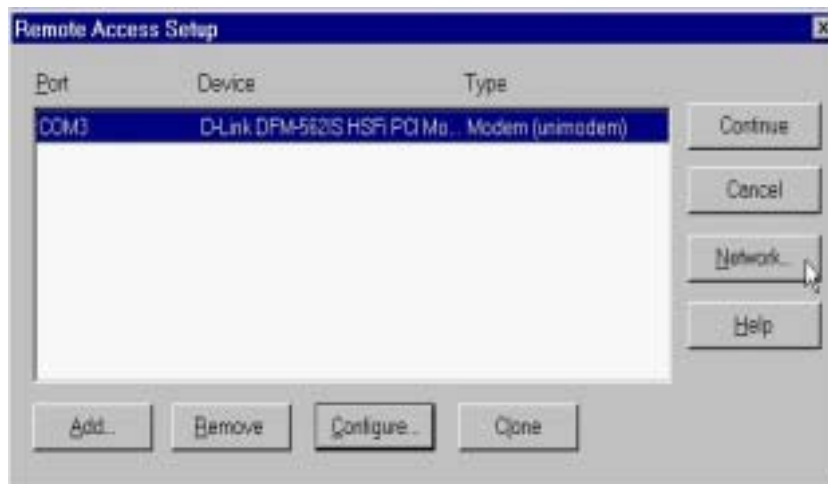
9. Click **Configure** to configure port usage.



10. Select **Dial out only** for Port Usage and click **OK** to confirm the settings.



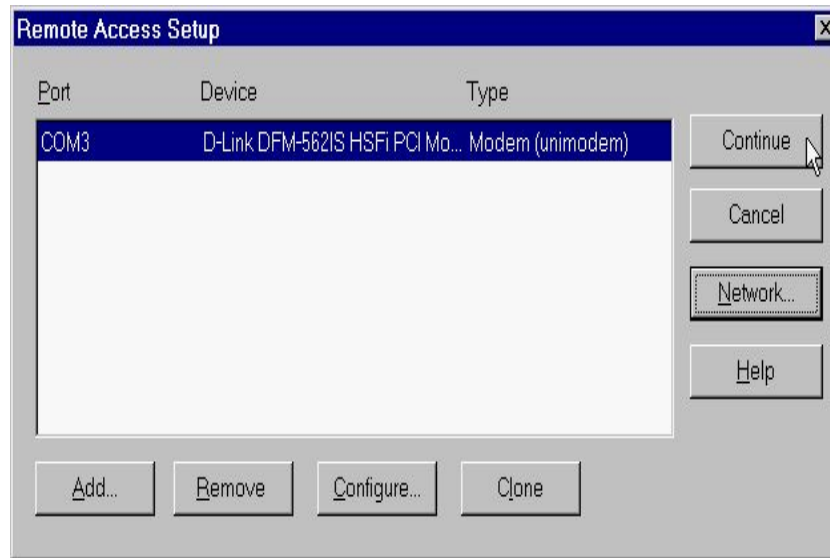
11. Click **Network** to configure the network.



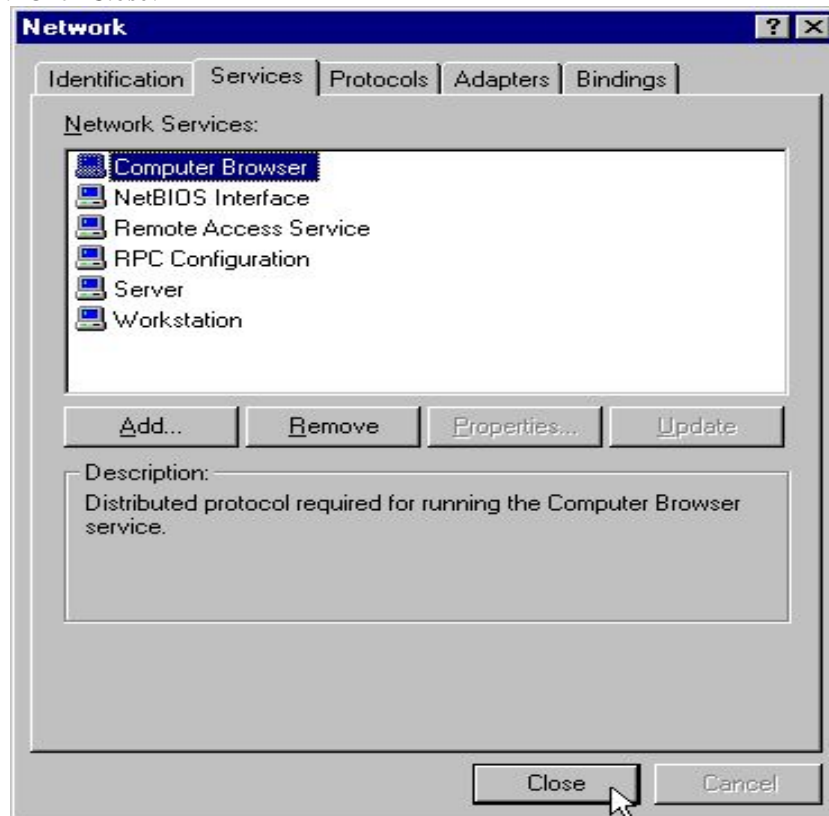
12. Select **TCP/IP** for Dial out Protocols and click **OK** to confirm the settings.



- Click *Continue* to complete the setup.



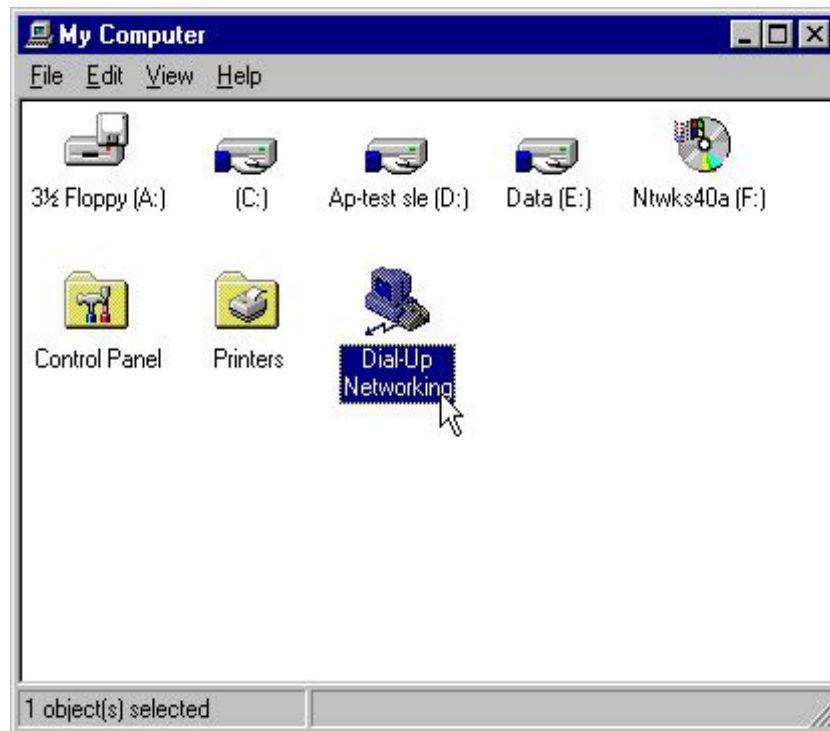
- Click *Close*.



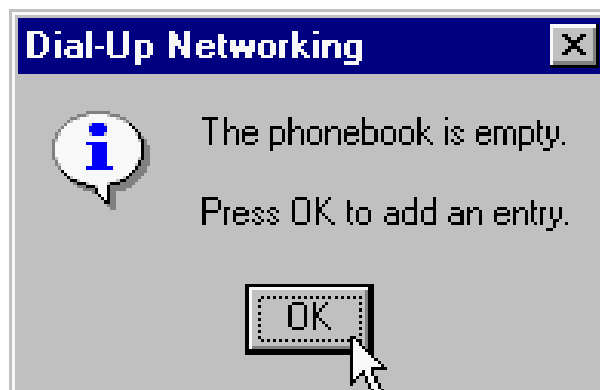
15. Click **Yes** to restart your computer.



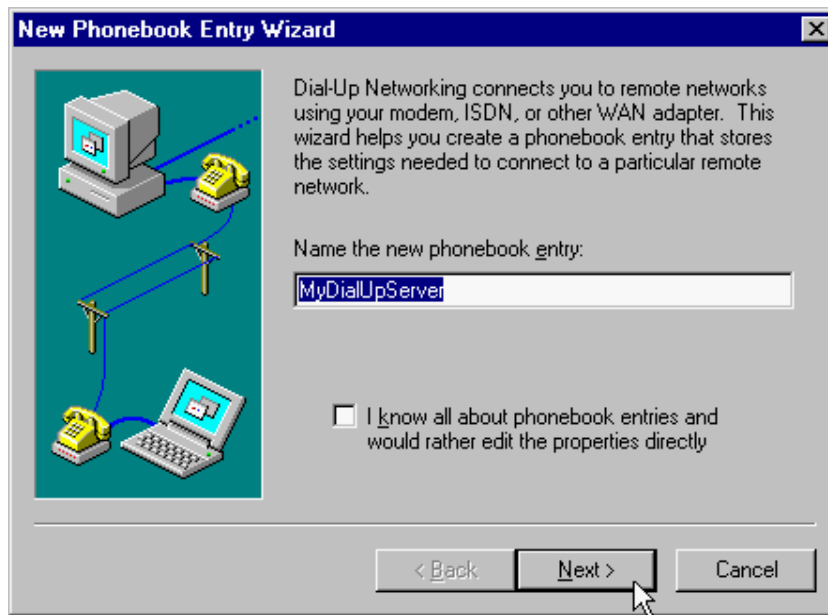
16. After restarting your computer, please double-click on the **My Computer** icon on the desktop and double-click on the **Dial-Up Networking** icon.



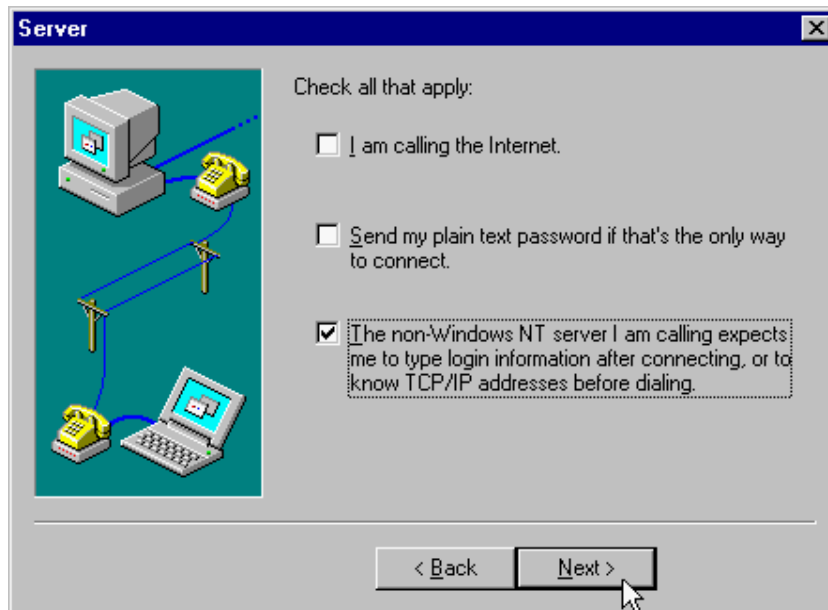
17. If your phonebook is empty, please click **OK** to add an entry.



18. You may use the name provided or enter a different one, then click *Next*.



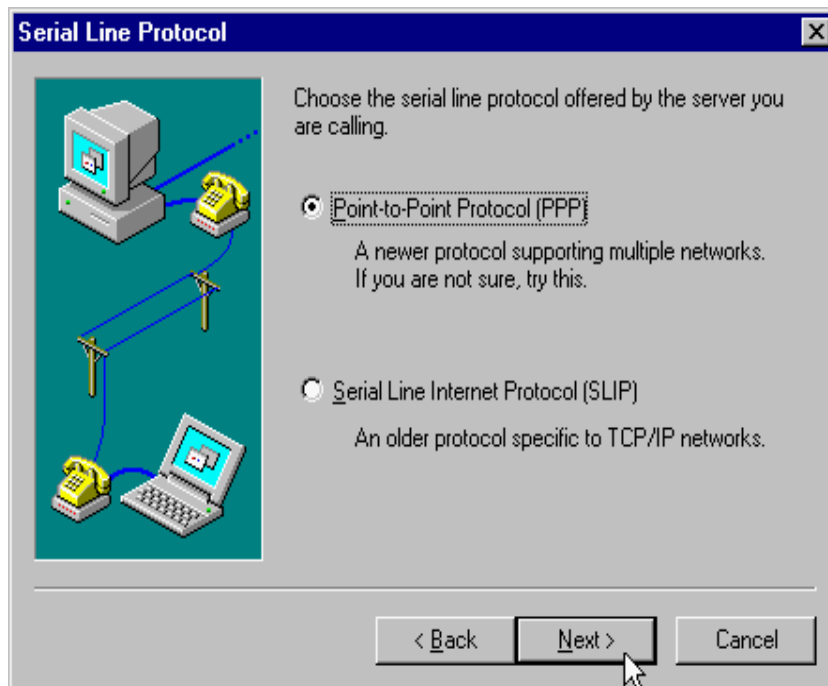
19. Select *The non-Windows NT server I am calling...* then click *Next*.



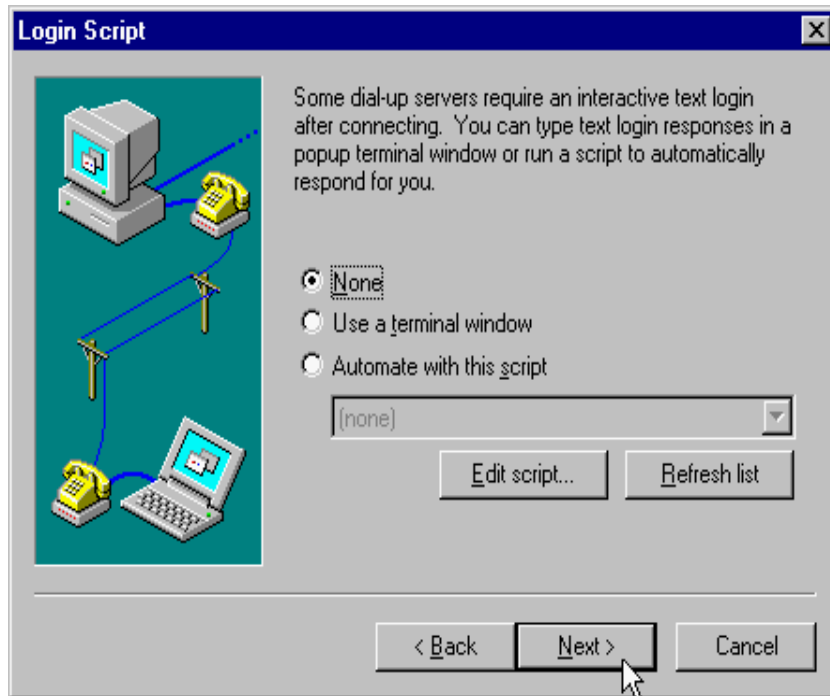
20. Enter the *Phone number* of your local ISP and click *Next*.



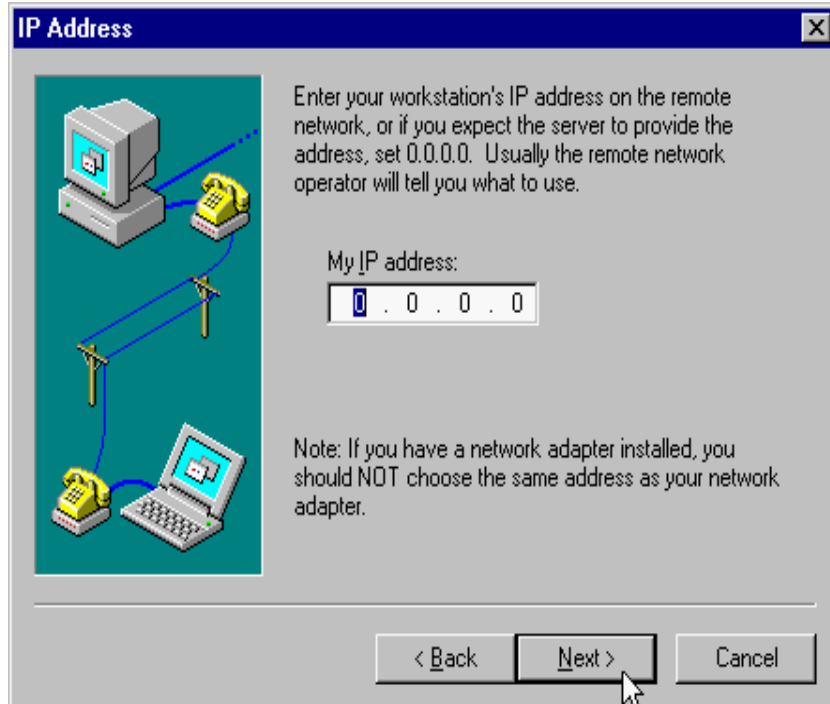
21. Select *Point-to-Point Protocol (PPP)* and click *Next*.



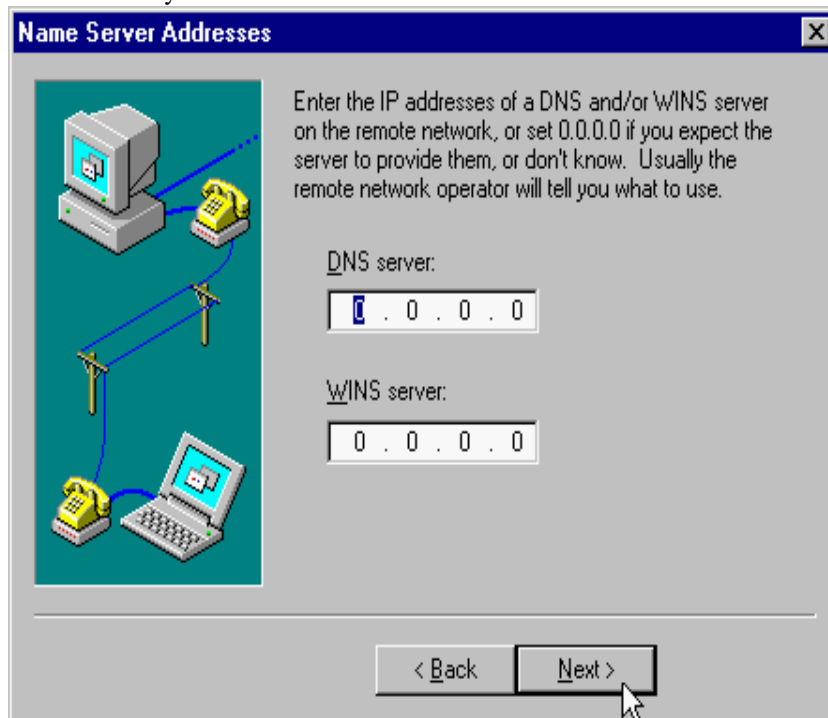
22. Select **None** under normal condition, or consult with your local ISP for other choice and click **Next** to continue.



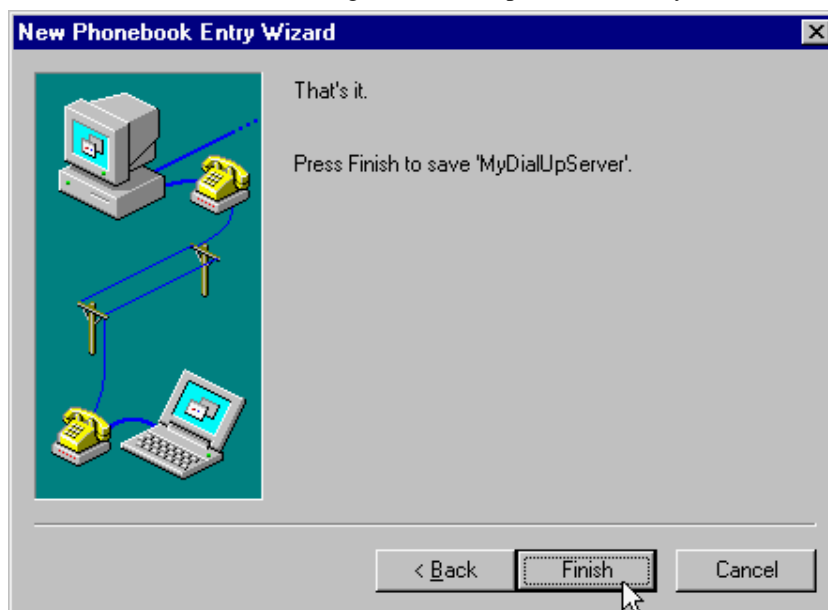
23. Enter your IP address if you have a fixed one or leave the value: **0.0.0.0**, then click **Next**.



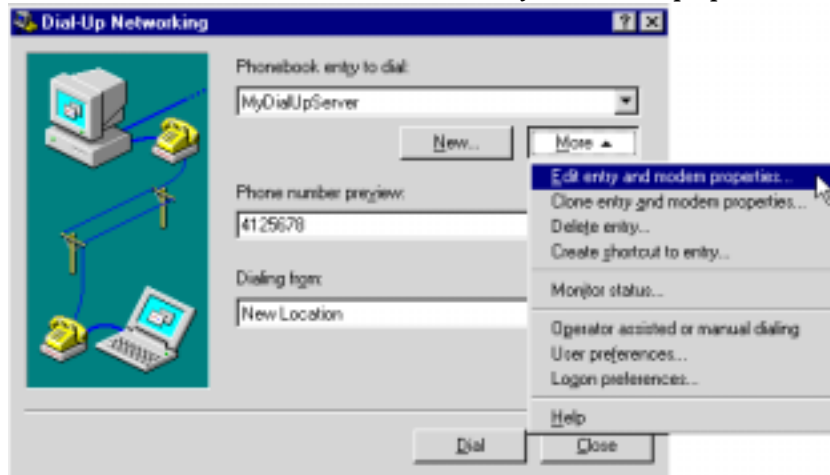
24. Enter the IP addresses of a **DNS** and/or **WINS** server for your local ISP or set **0.0.0.0** if you are not sure. Then click **Next** to continue.



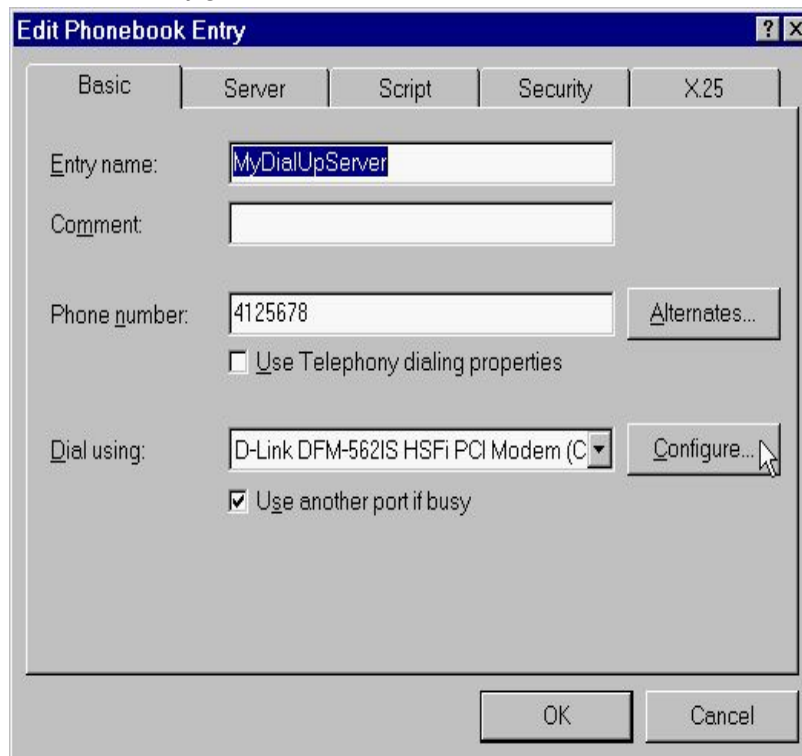
25. Click **Finish** to save the settings for the new phonebook entry.



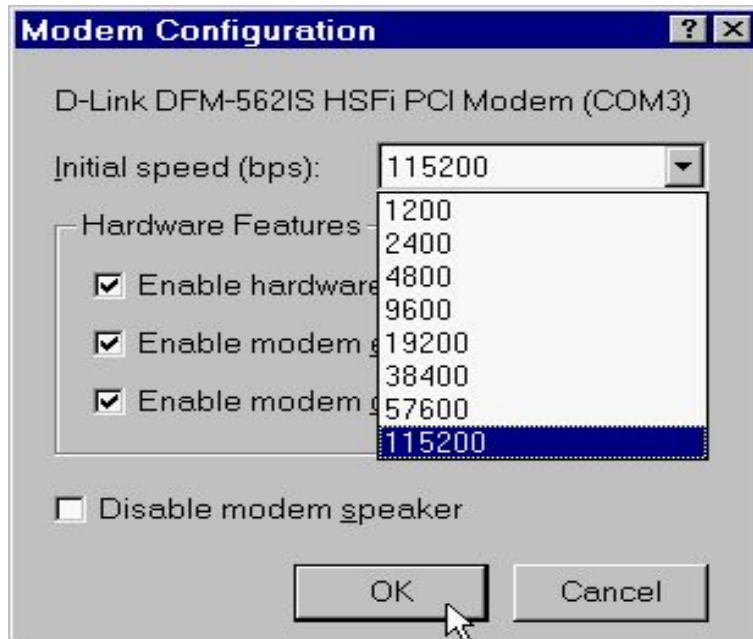
26. Click on the **More** buttons and select **Edit entry and modem properties....**



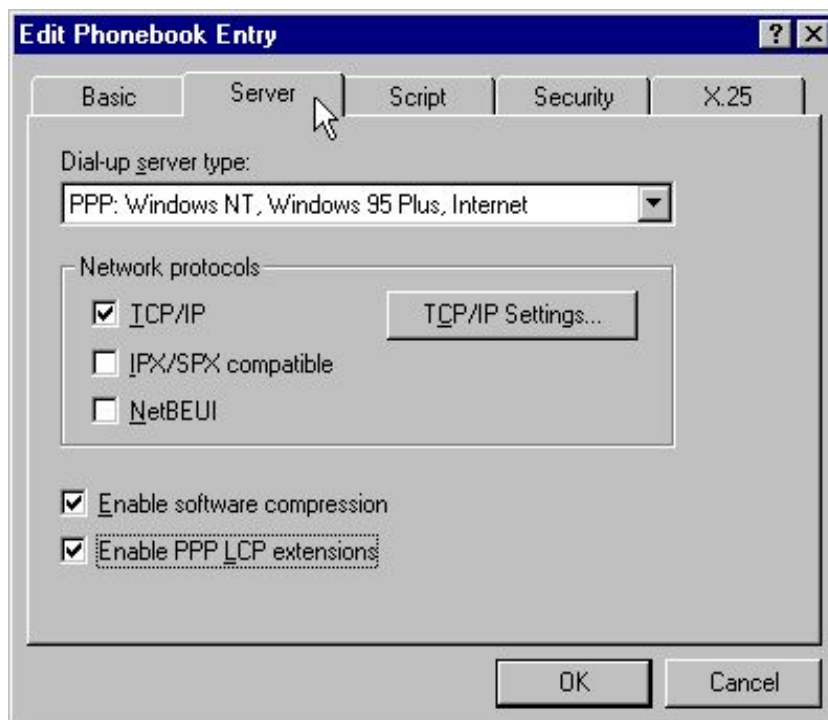
27. Select **D-Link DFM-562IS HSFi PCI Modem (COM3)** from Dial using list and click on the **Configure** button.



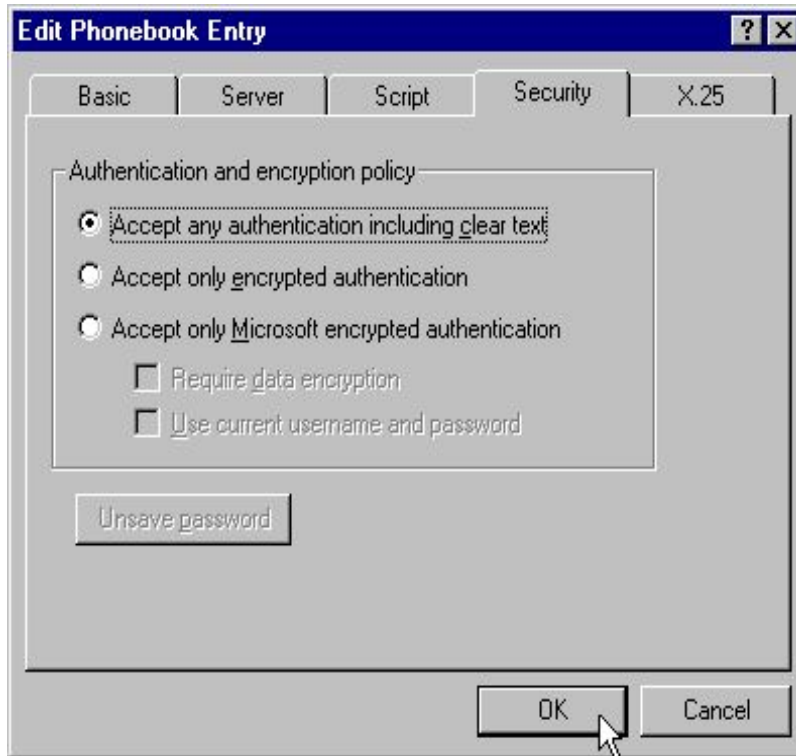
28. Enable all the *Hardware Features* and select *115200* from *Initial speed* list, then click *OK*.



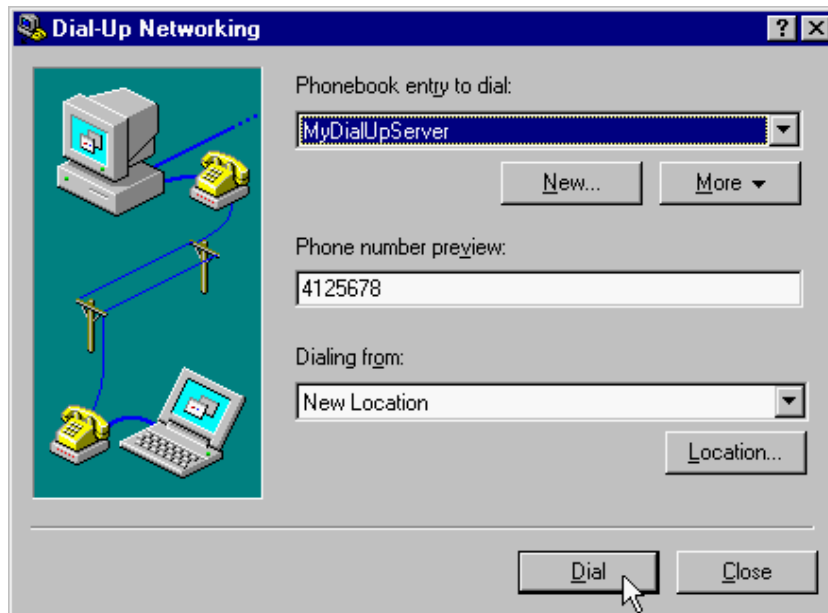
29. Click on the *Server* tab and enable three options of *TCP/IP*, *Enable software compression* and *Enable PPP LCP extensions*.



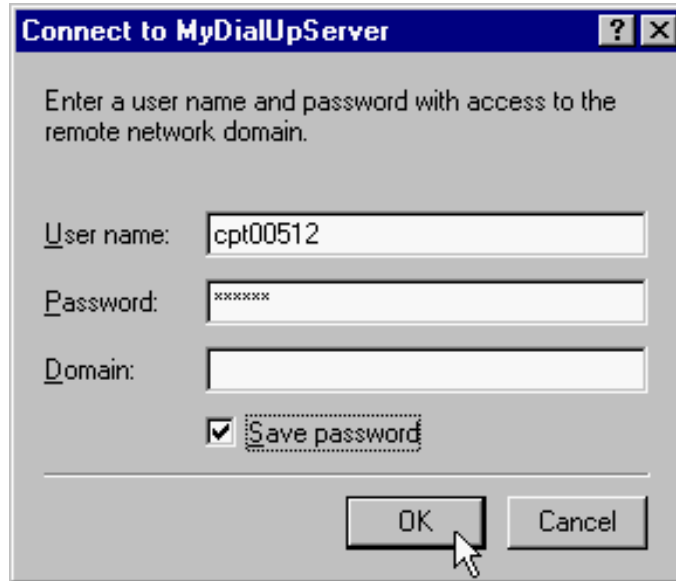
30. Click on the *Security* tab and enable the option: *Accept any authentication including clear text*, then click *OK*.



31. The phonebook entry has been edited, click *Dial* to connect to.

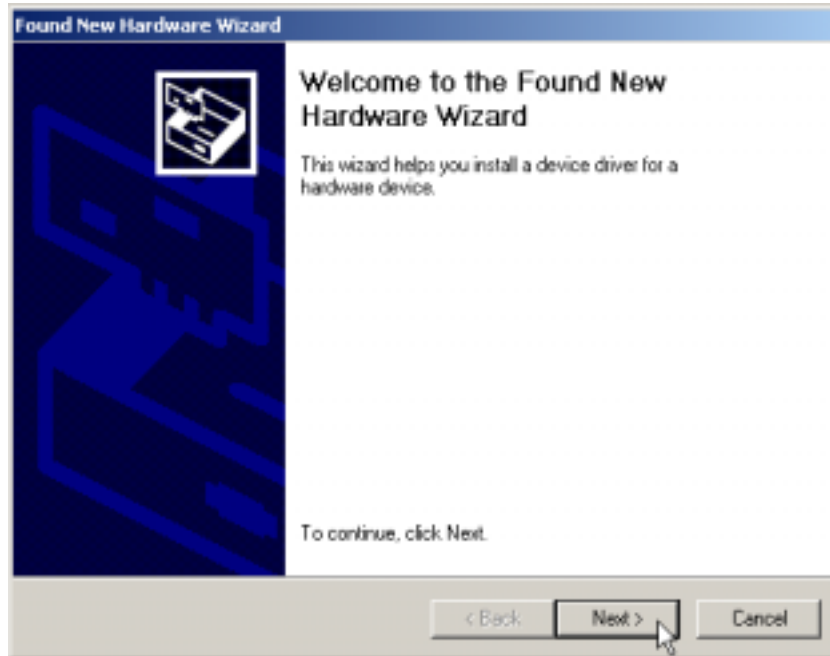


32. Enter *User name* and *Password* and click *OK*, and the modem will dial out to your ISP and get a connection.



4.5 Windows 2000

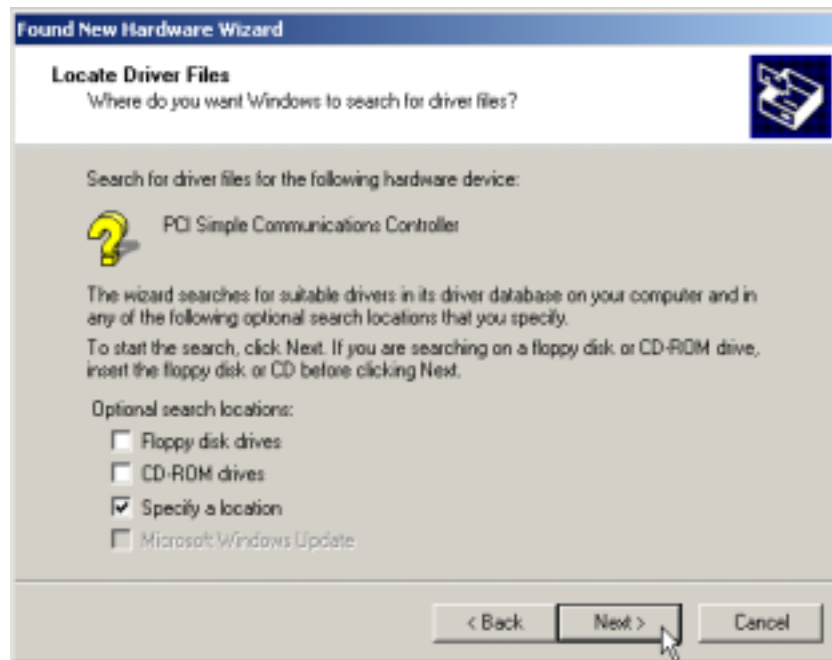
1. Windows will detect the modem automatic; please insert the driver CD supplied and clicks *Next* to continue.



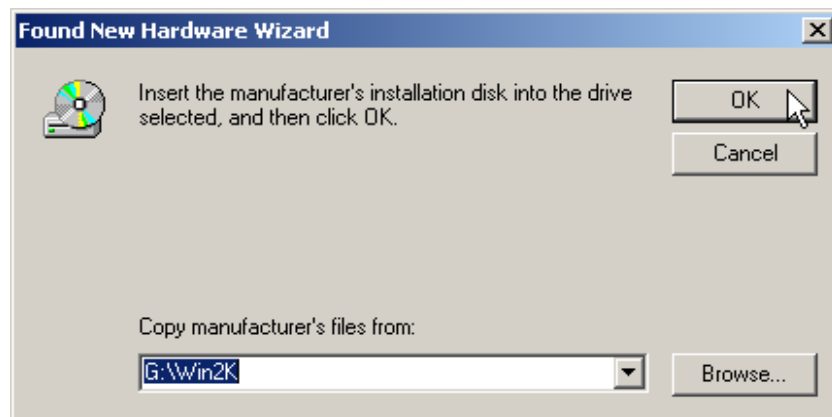
2. Select *Search for a suitable driver for my device [recommended]*, and click *Next*.



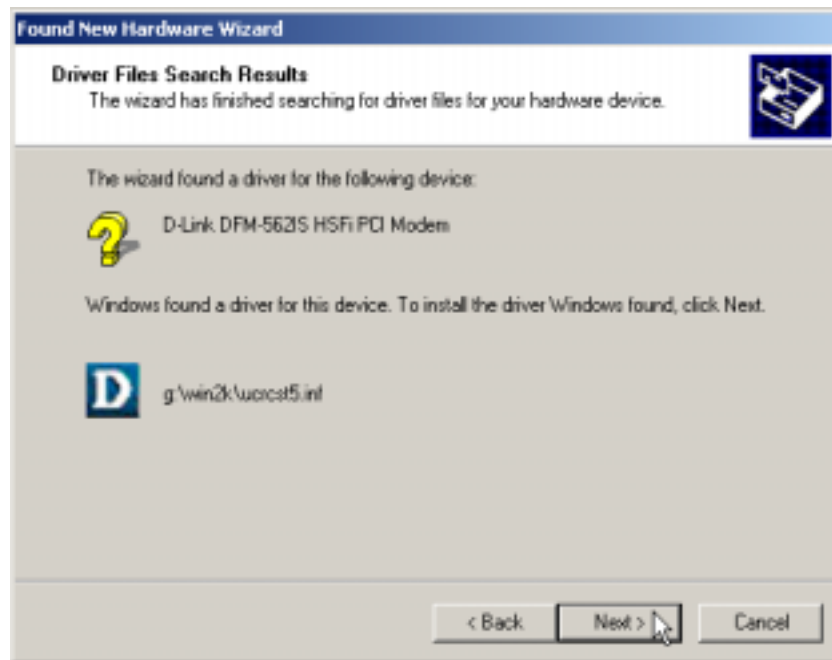
3. Select *Specify a location*, then click *Next* to continue.



4. Please type *G:\Win2K* (G is the letter of your CD-ROM driver), then click *OK* to continue.



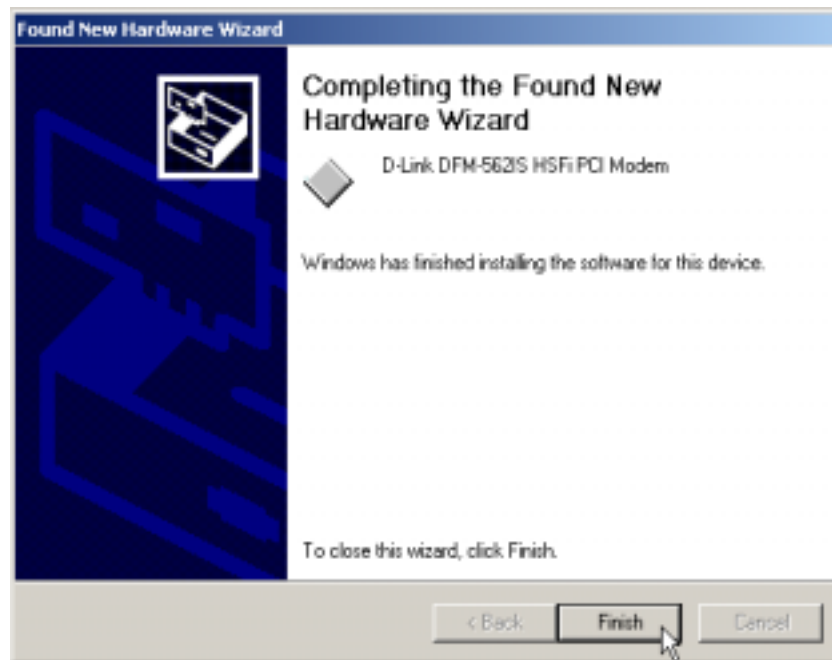
5. Click *Next* to continue.



6. Click *Yes*.



7. Click **Finish** to end procedure.

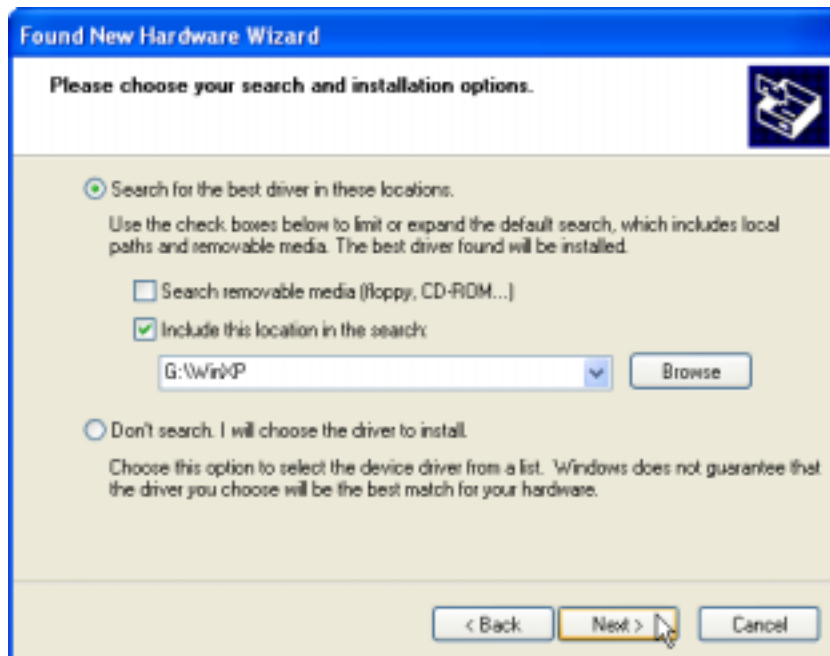


4.6 Windows XP

1. . Select *Install from a list specific location [Advanced]*, then click *Next*.



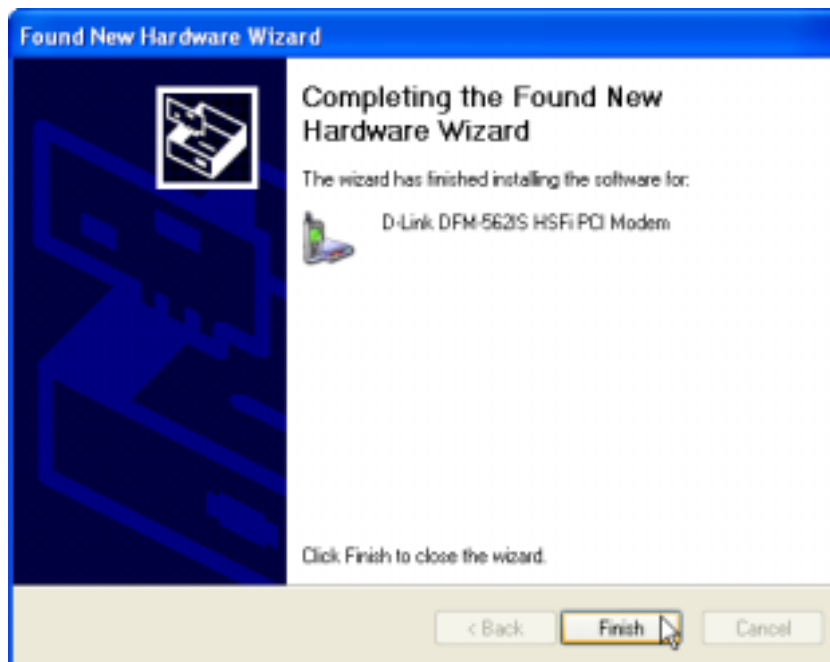
2. Select *Include this location in this search*, then click *Next*.



3. Click **Continue Anyway**.



4. This installation has been done; click **Finish** to end this procedure.



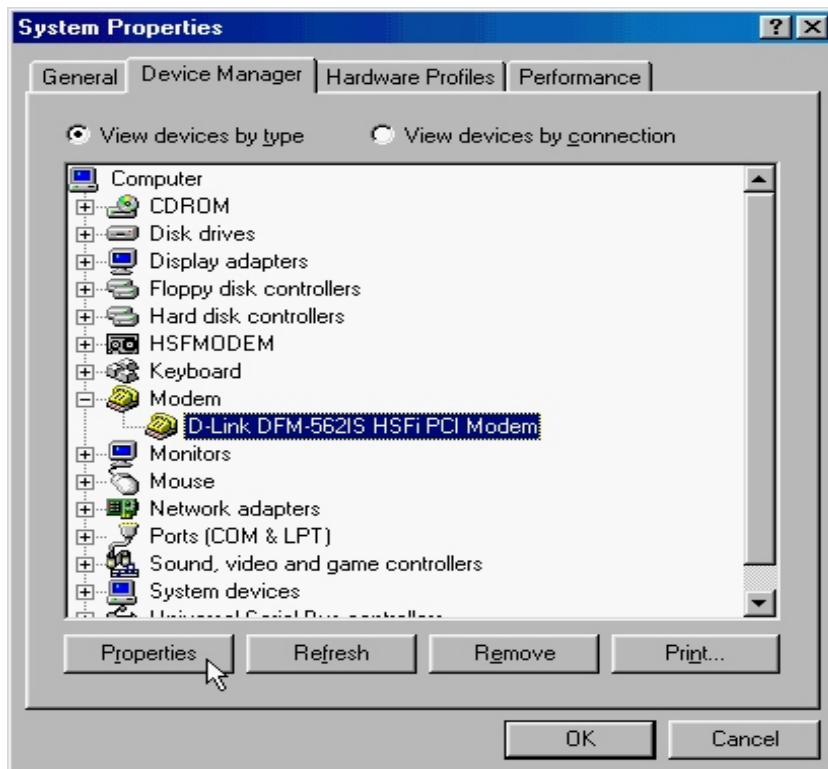
Chapter 5 Select Modem Country

5.1 Windows 95

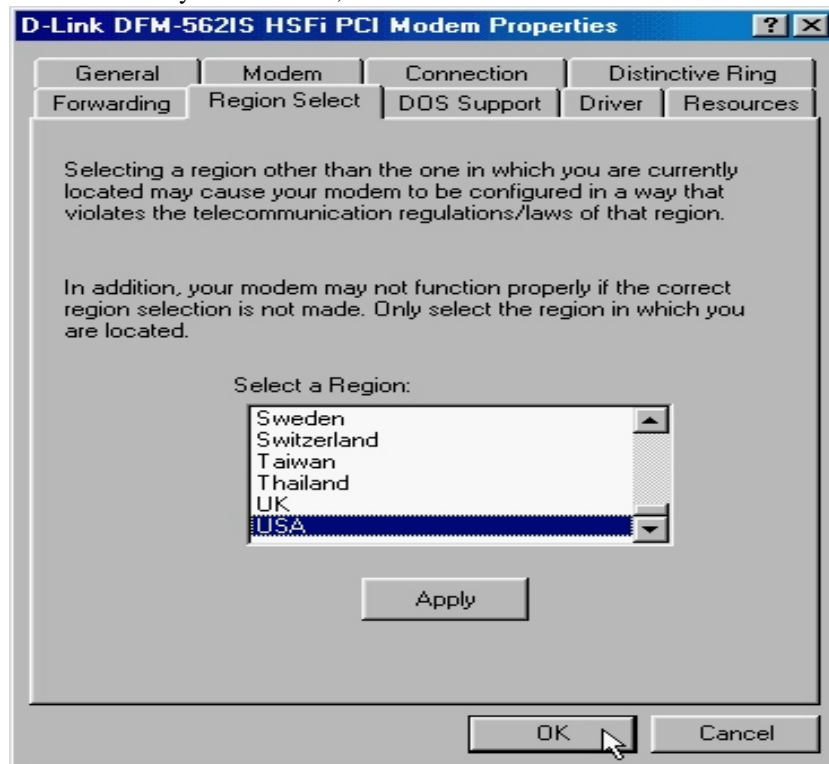
1. Move your cursor as following sequence *Start\Settings\Control Panel* and click *Control Panel*. Then double-click on the *System* icon.



2. Click *Device Manager* tab and select *D-Link DFM-562IS HSFi PCI Modem*, then click *Properties*.

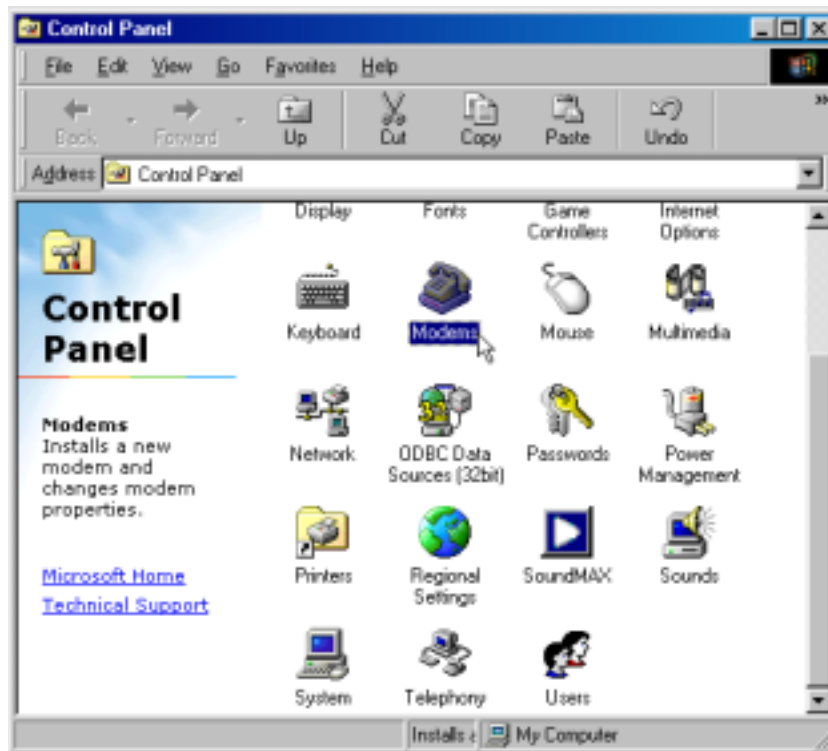


3. Select country form the list , then click **OK**.

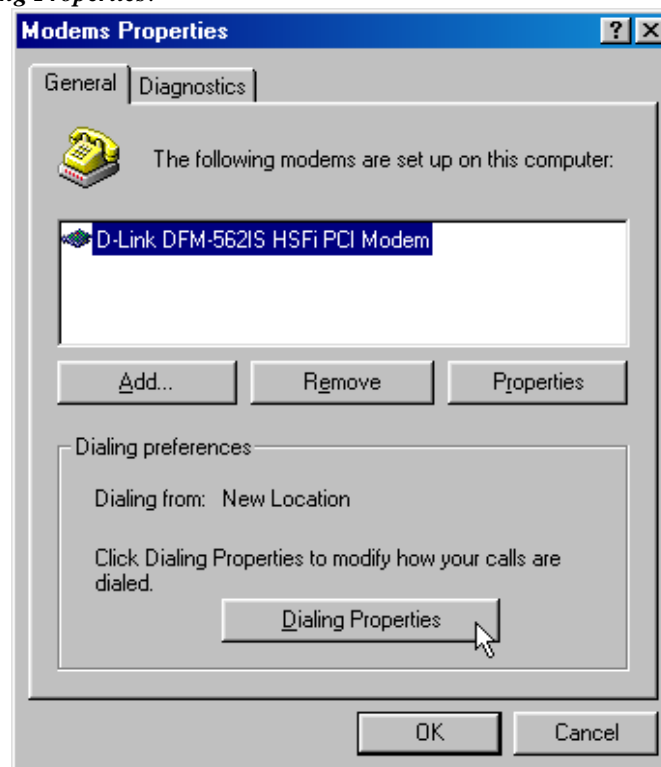


5.2 Windows 98/ME

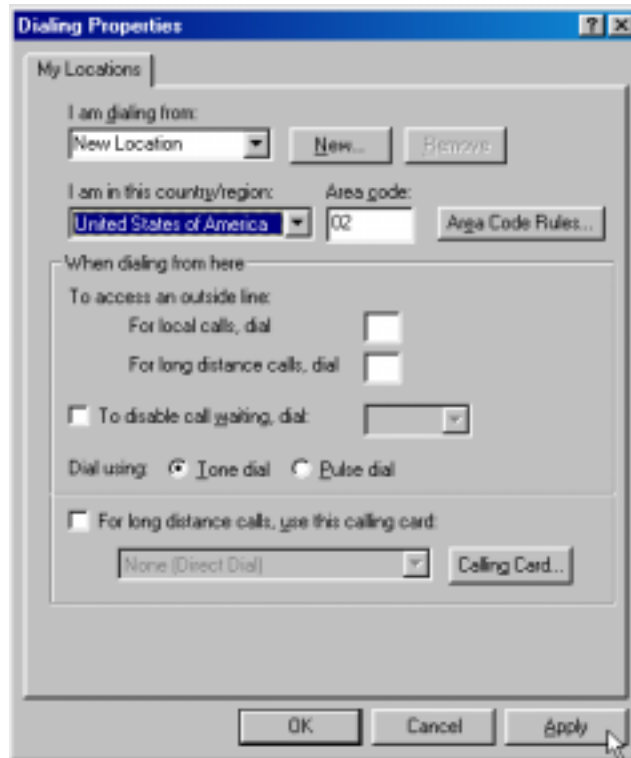
1. Move your cursor as following sequence *Start* | *Settings* | *Control Panel* and click *Control Panel*. Then double-click on the *Modems* icon.



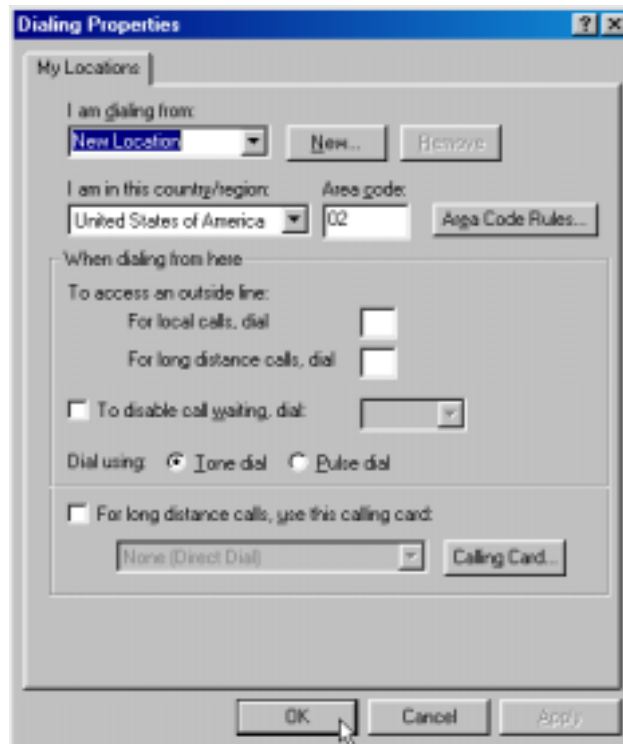
2. Select *General* and click *D-Link DFM562IS HSF-i PCI Modem*, then click *Dialing Properties*.



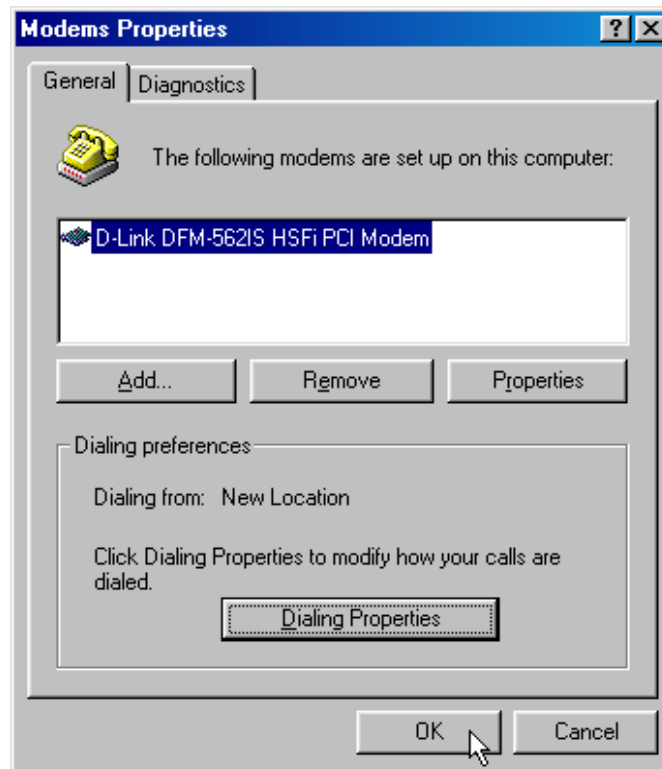
3. In the *I am in this country/region*, to select *United States of America* and click *Apply*.



4. Click *OK*.

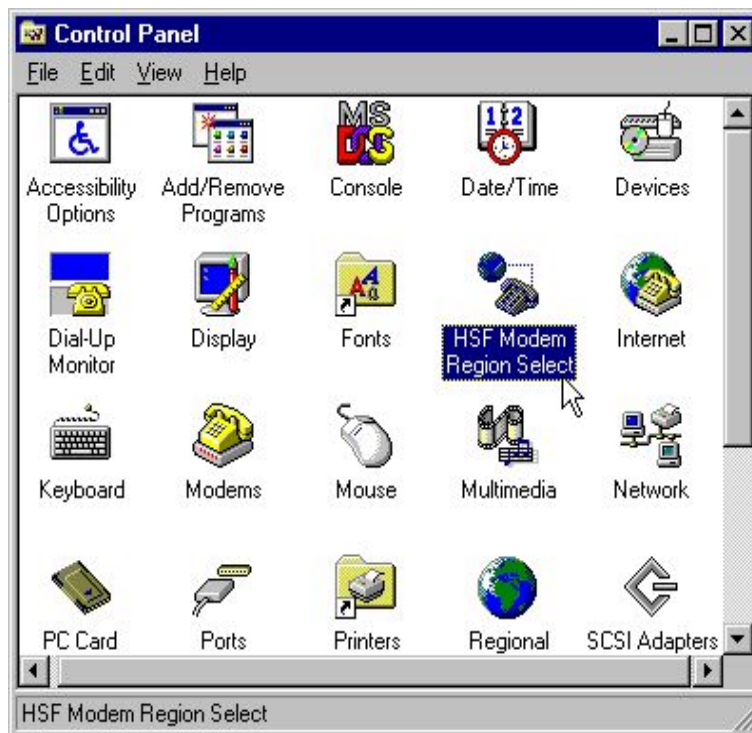


5. Click **OK** to end this procedure.



5.3 Windows NT4.0

1. Move your cursor as following sequence *Start | Settings | Control Panel* and click *Control Panel* and double-click on the *HSF Modem Region Select* icon.



2. Select your country from a list and click *OK*.

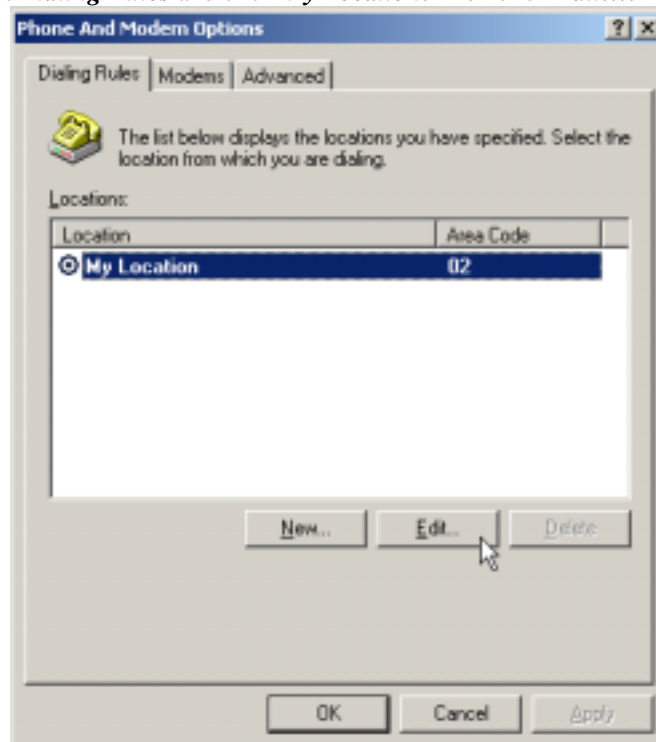


5.4 Windows 2000

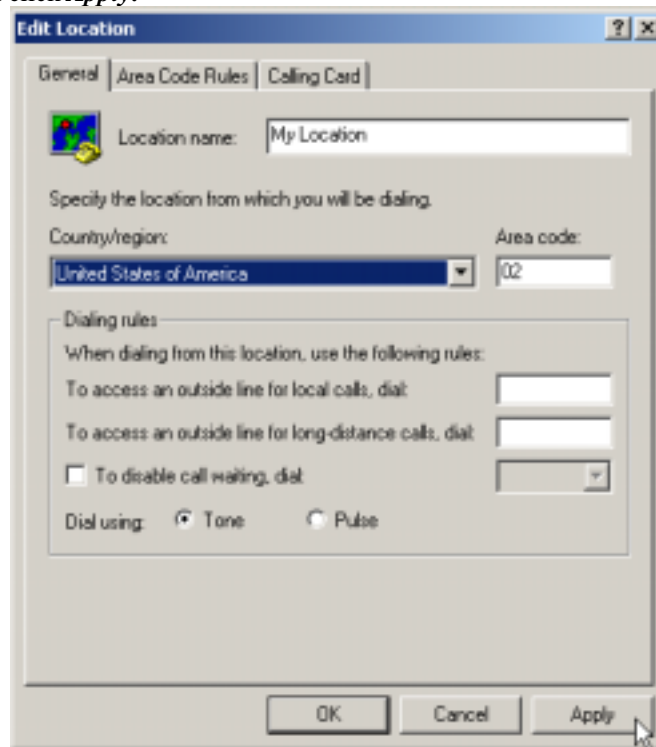
1. Move your cursor as following sequence *Start* | *Settings* | *Control Panel* and click *Control Panel*. Then double-click on the *Phone and Modem Options* icon.



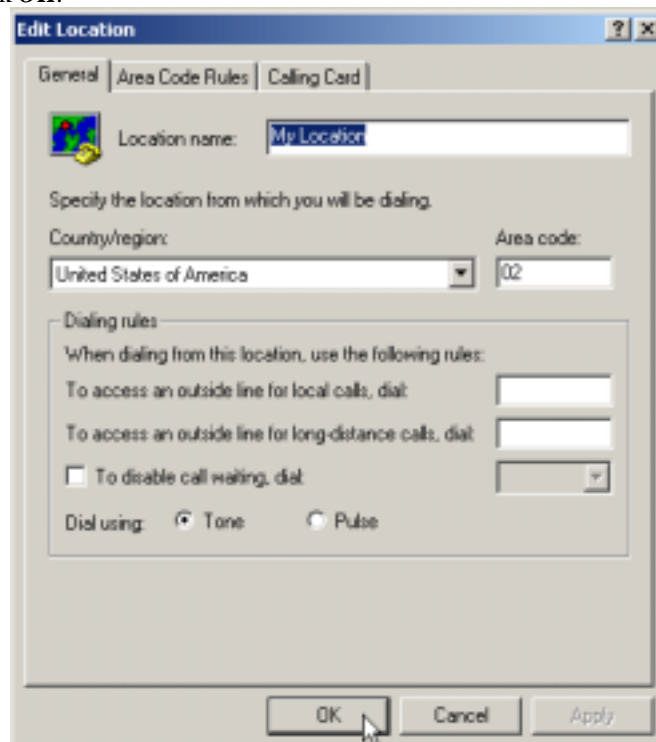
2. Select *Dialing Rules* and click *My Location*. Then click *Edit....*



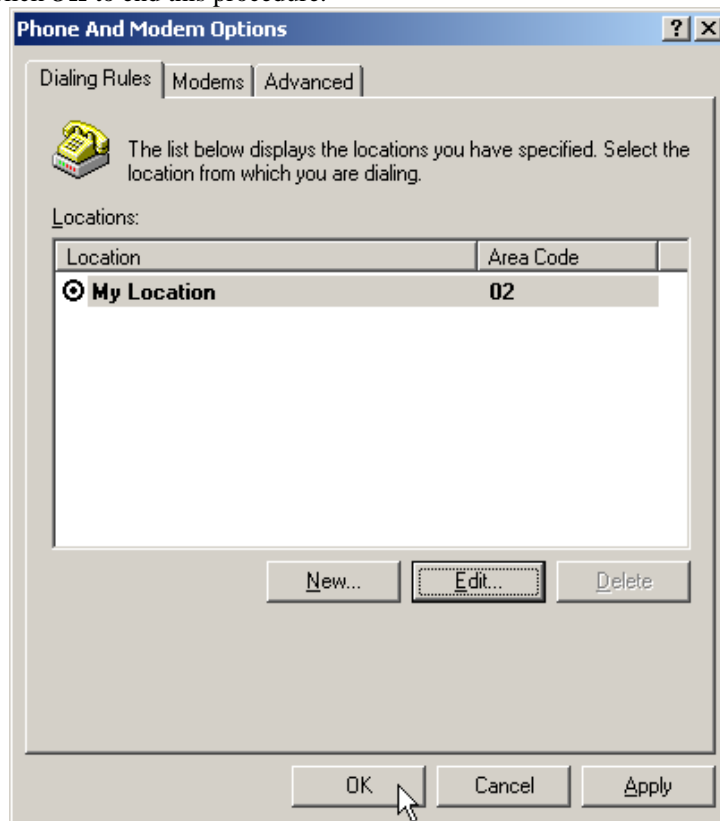
3. Click **General** and in the **Country/region** to select **United States of America**. Then click **Apply**.



4. Click **OK**.



5. Click **OK** to end this procedure.

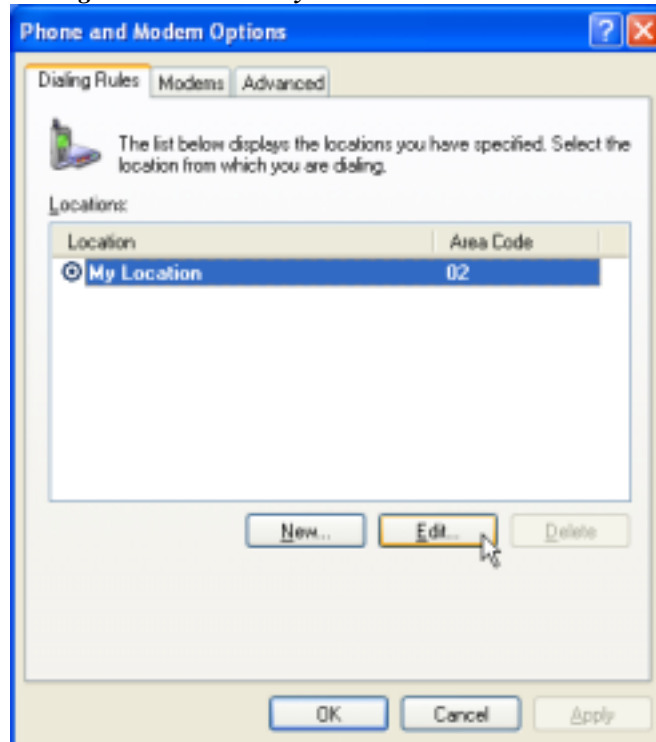


5.5 Windows XP

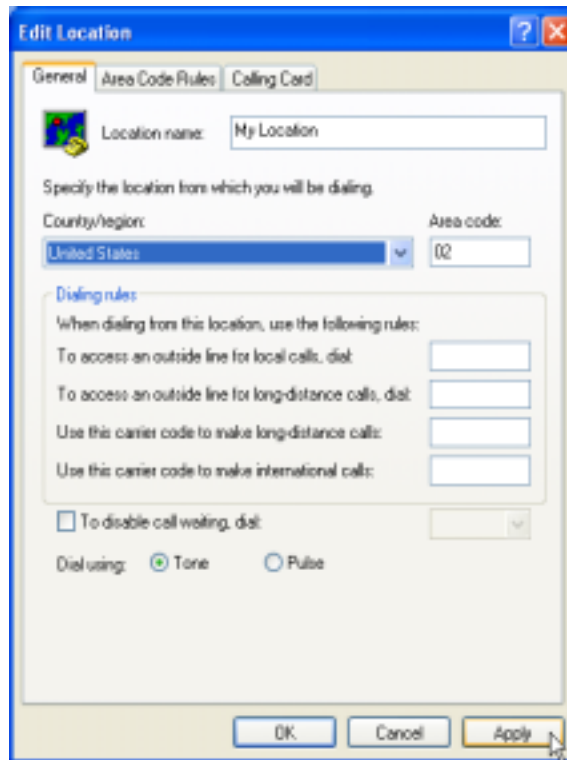
1. Move your cursor as following sequence *Start* | *Settings* | *Control Panel* and click *Control Panel*. Then double-click on the *Phone and Modem Options* icon.



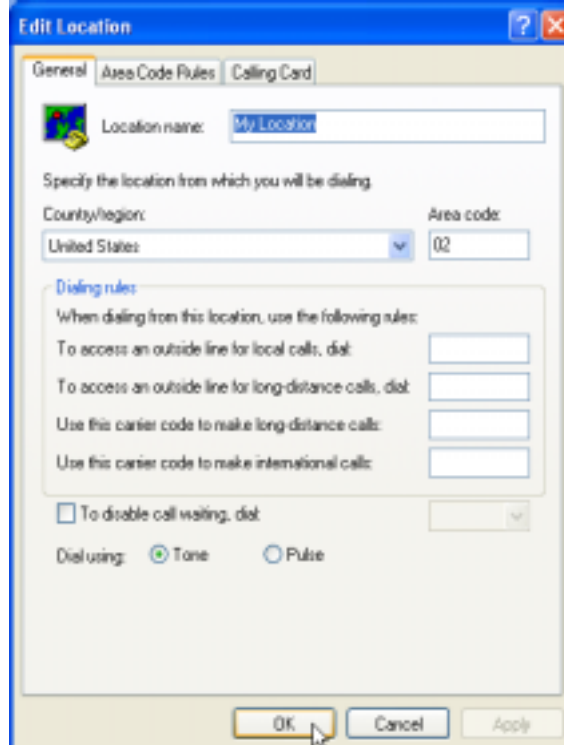
2. Select *Dialing Rules* and click *My Location*. Then click *Edit....*



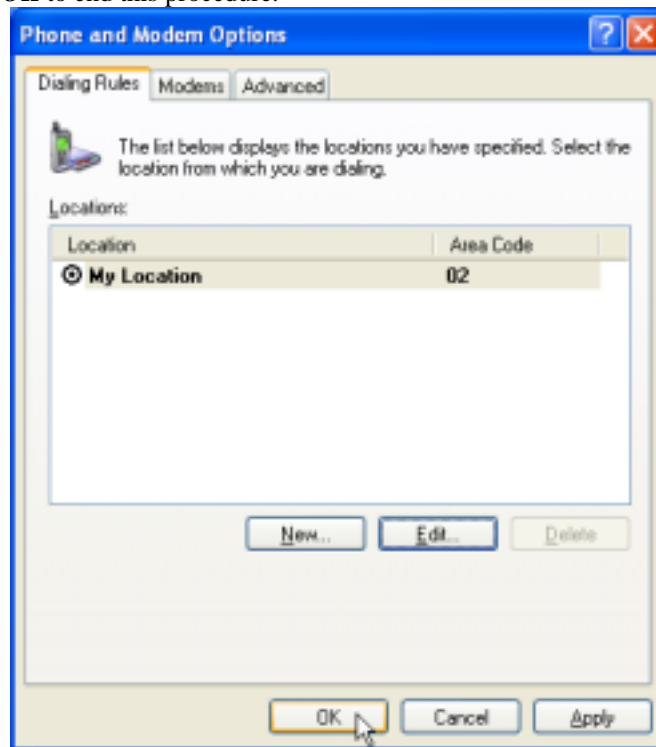
3. Click **General** and in the **Country/region** to select **United States of America**. Then click **Apply**.



4. Click **OK**.



5. Click **OK** to end this procedure.



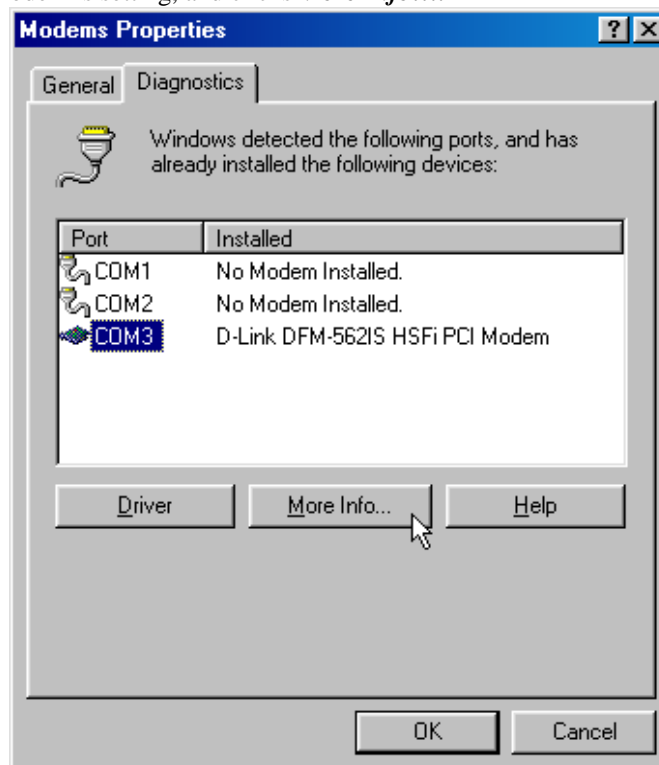
Chapter 6 Diagnostics

6.1 Windows 95/98/ME

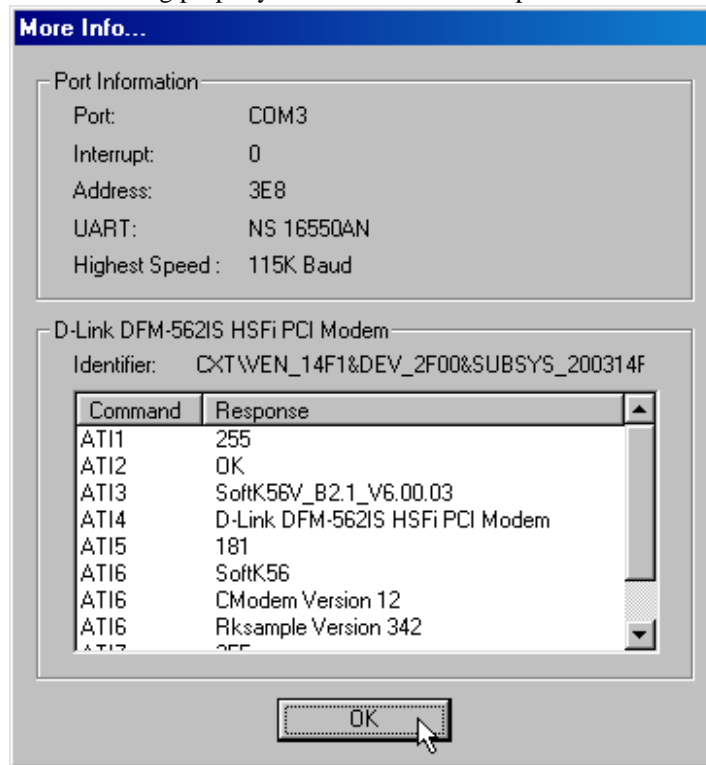
1. Move your cursor as following sequence *Start* | *Settings* | *Control Panel* and click *Control Panel*. Then double-click on the *Modems* icon.



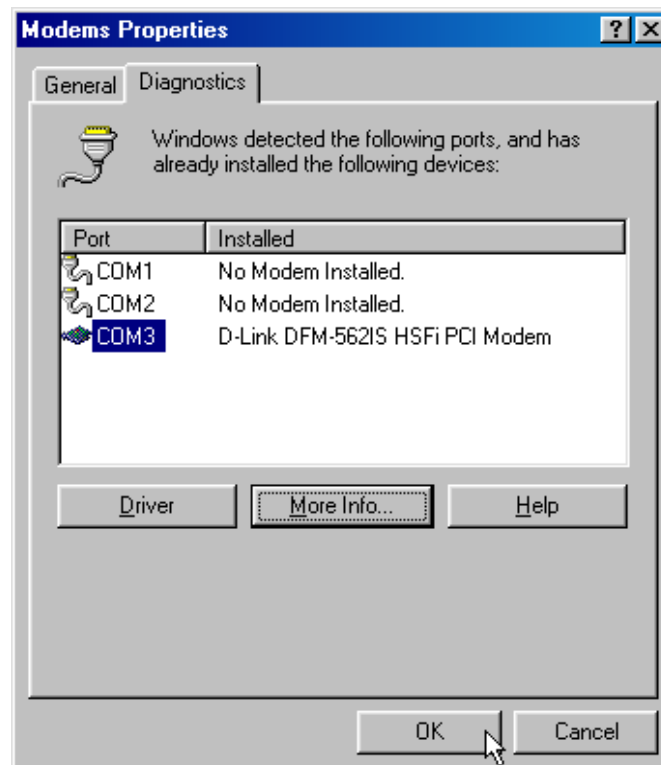
2. To test the modem by clicking on the *Diagnostics* tab. Select the *COM port* that the modem is setting, and clicks *More Info....*



3. Responding to AT commands and functioning correctly, it means that your modem is working properly. Click **OK** to end this procedure.



4. Click **OK**.

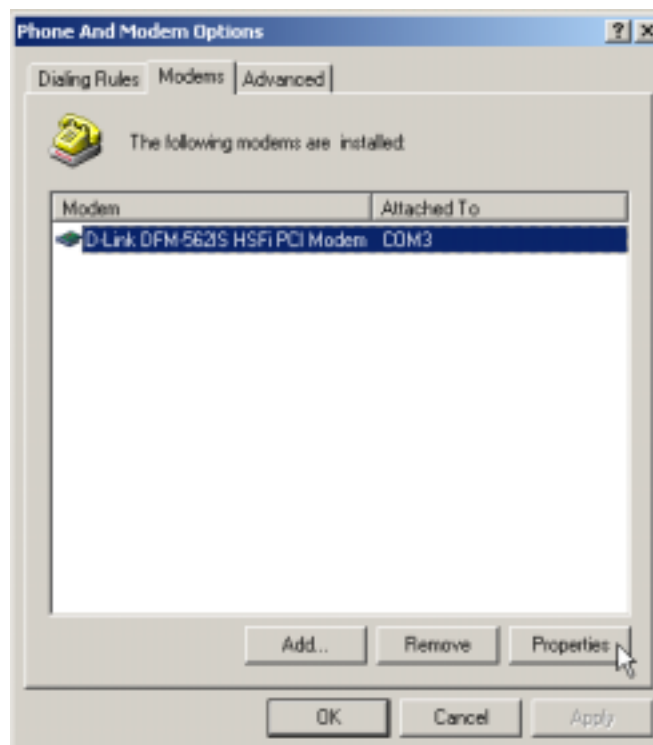


6.2 Windows 2000

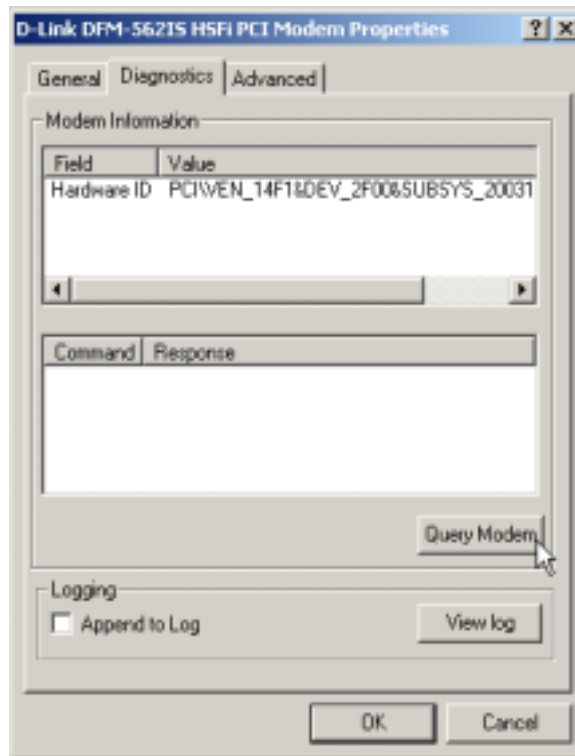
1. Move your cursor as following sequence *Start | Settings | Control Panel* and click *Control Panel*. Then double-click on the *Phone and Modem Options* icon.



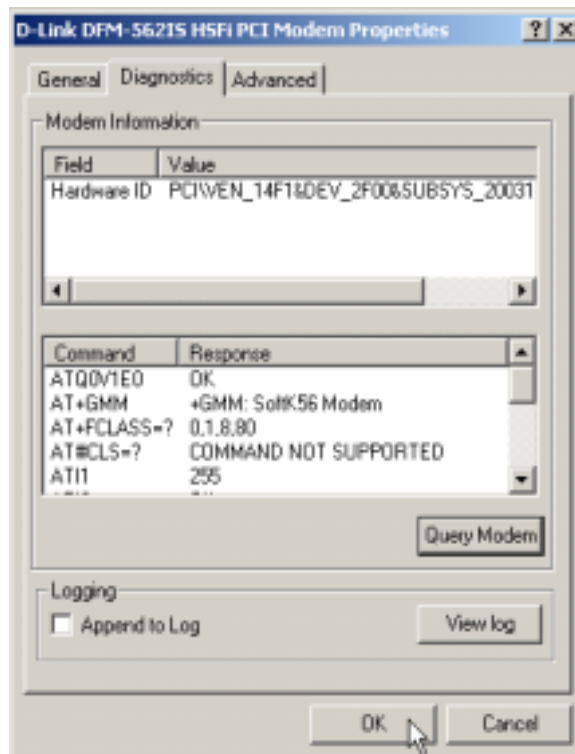
2. Click on the *Modems*, then select *D-Link DFM-562IS HSFi PCI Modem* and click *Properties*.



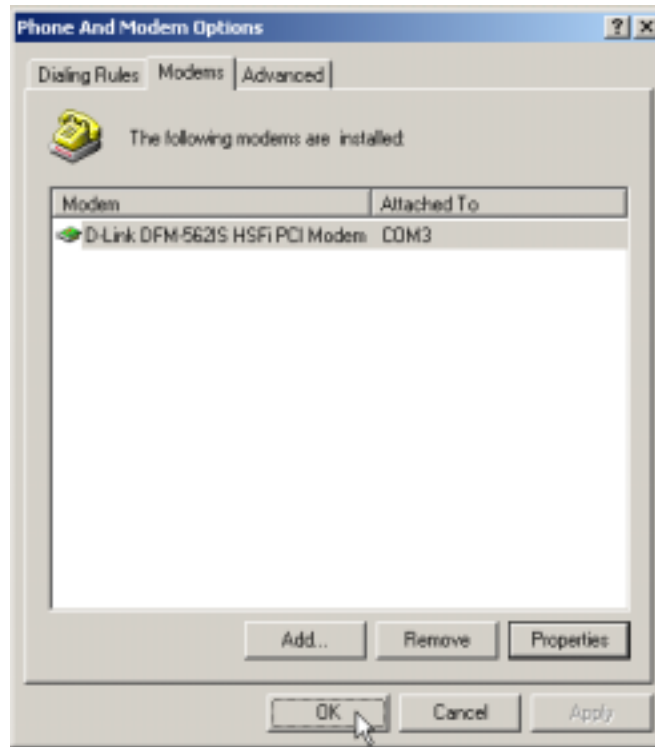
3. Click **Diagnostics**. To test the modem by clicking **Query Modem**.



4. If your modem is responding to AT commands and functioning correctly, it means that your modem is working properly. Click **OK** to end this procedure.

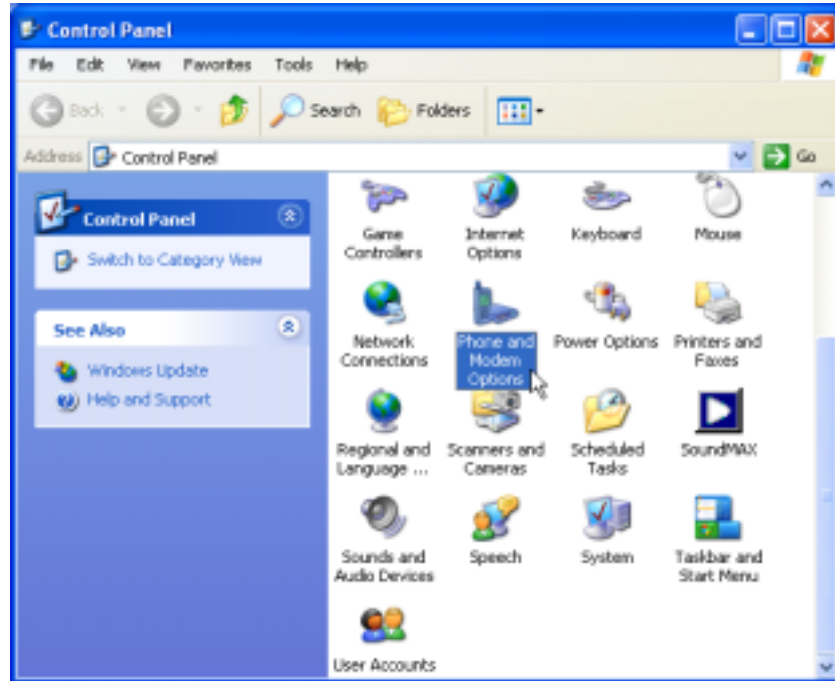


5. Click **OK** to end this procedure.

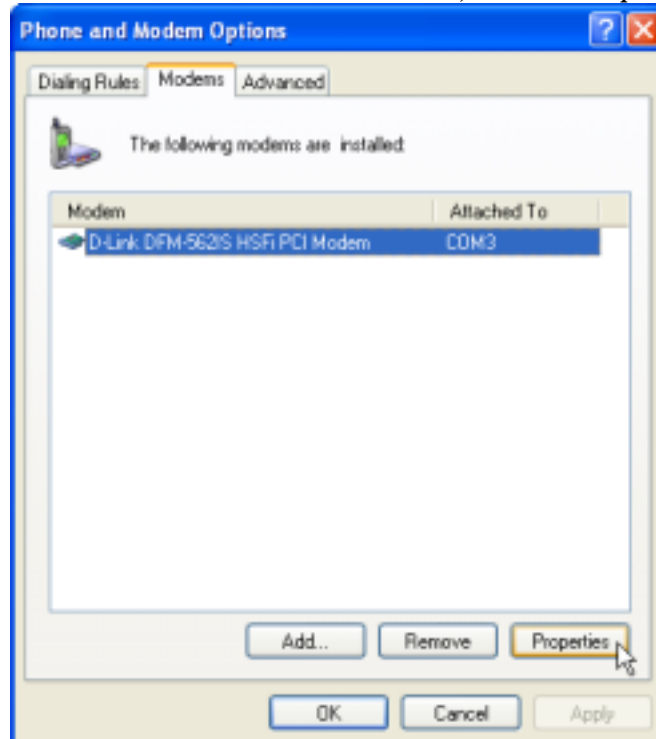


6.3 Windows XP

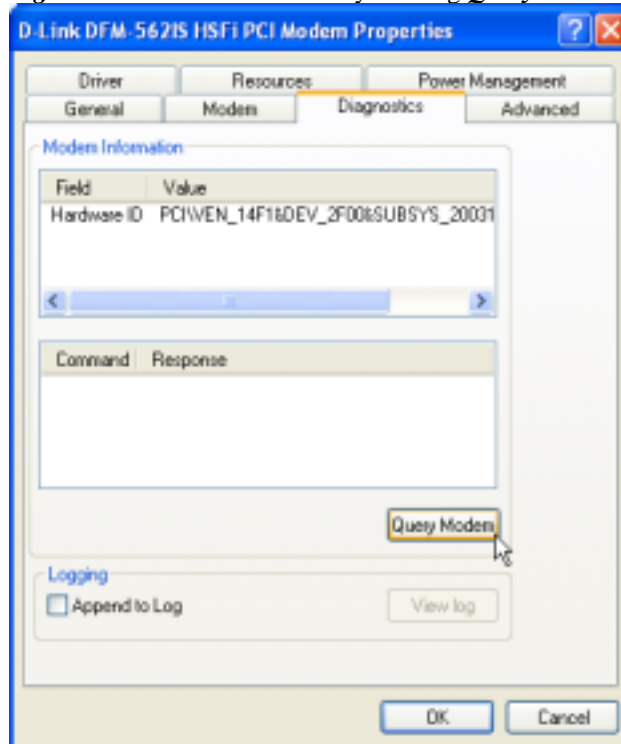
1. Move your cursor as following sequence *Start | Settings | Control Panel* and click *Control Panel*. Then double-click on the *Phone and Modem Options* icon.



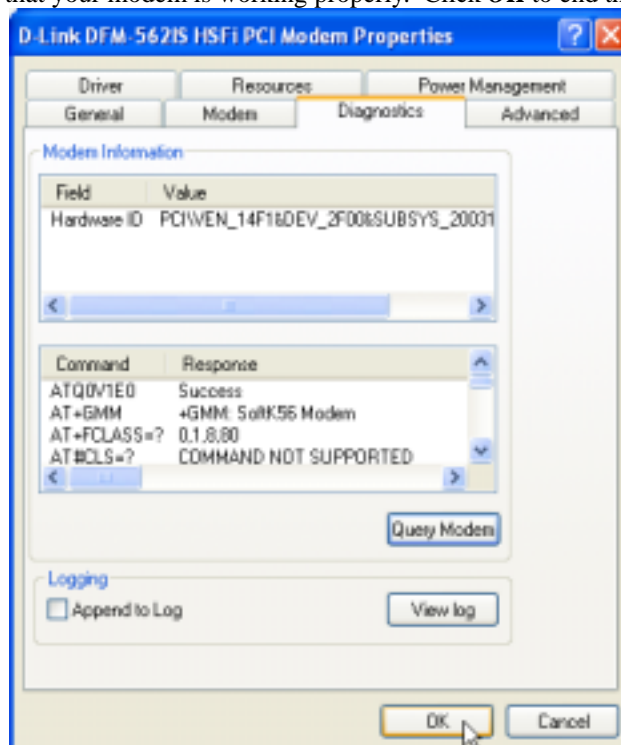
2. Select *Modems* and click *FM-56PCI-HSFi-AB*, then click *Properties*.



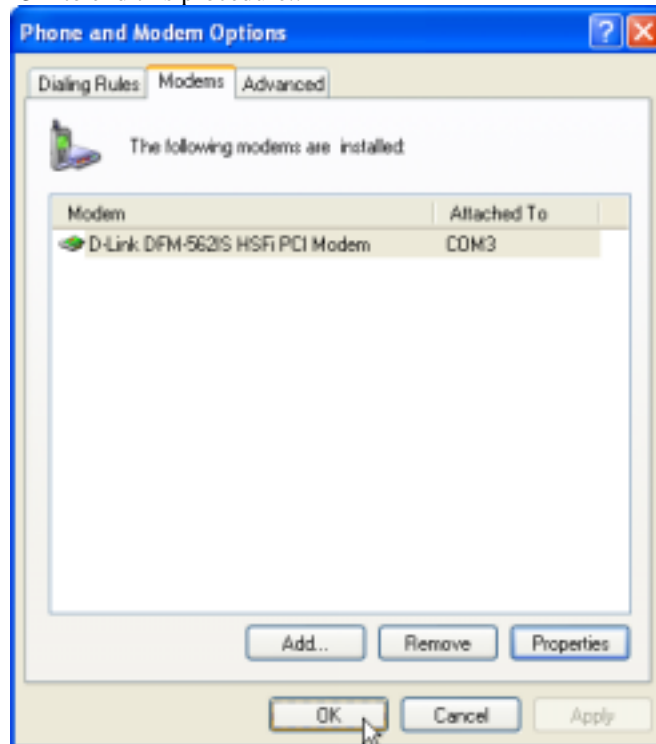
- Click **Diagnostics**. To test the modem by clicking **Query Modem**.



- If your modem is responding to AT commands and functioning correctly, it means that your modem is working properly. Click **OK** to end this procedure.



5. Click **OK** to end this procedure..



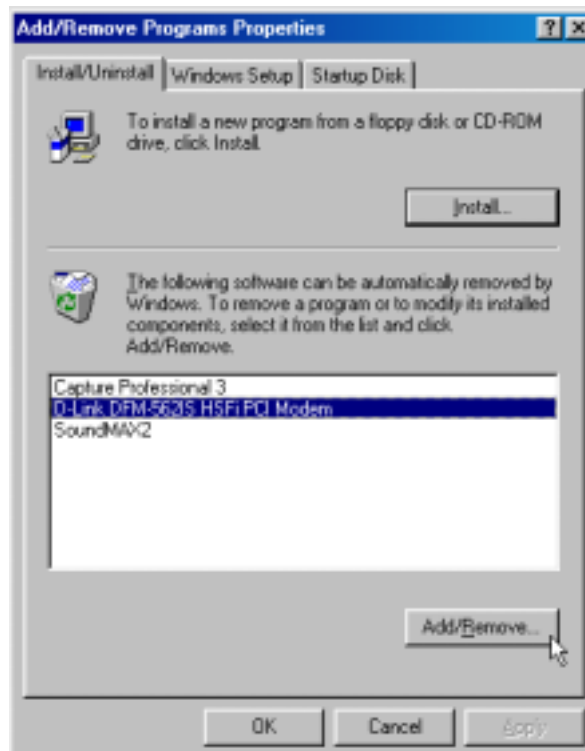
Chapter 7 Uninstalling Procedures

7.1 Windows 95

1. Move your cursor as following sequence *Start* | *Settings* | *Control Panel* and click *Control Panel*. Then double-click on the *Add/Remove Programs* icon.



2. Select *D-Link DFM-562IS HSFi PCI Modem* from the list and then click the *Add/Remove* button.



3. Click **Yes** to remove the modem then click **OK**.

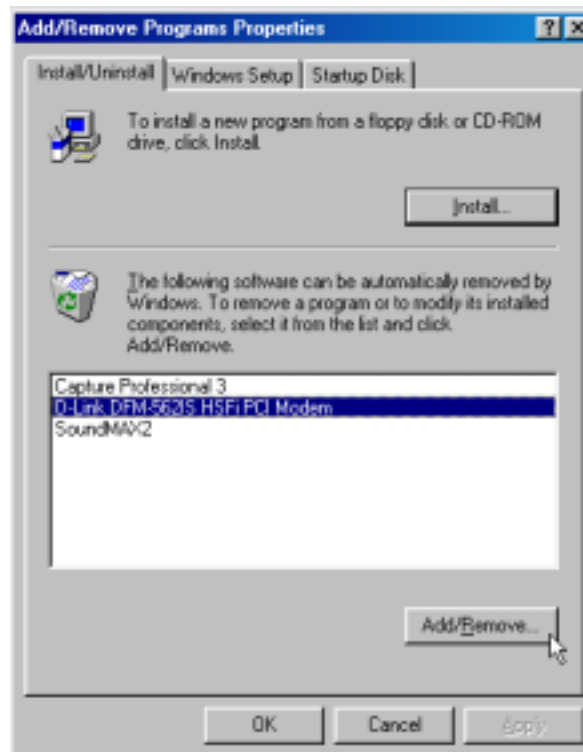


7.2 Windows 98/ME

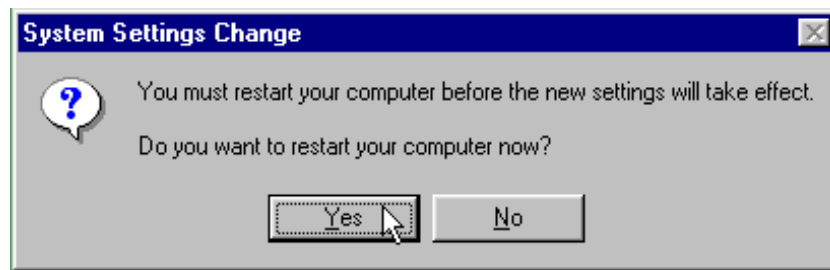
1. Move your cursor as following sequence *Start* | *Settings* | *Control Panel* and click *Control Panel*. Then double-click on the *Add/Remove Programs* icon.



2. Select *D-Link DFM-562IS HSFi PCI Modem* from the list and then click the *Add/Remove* button.

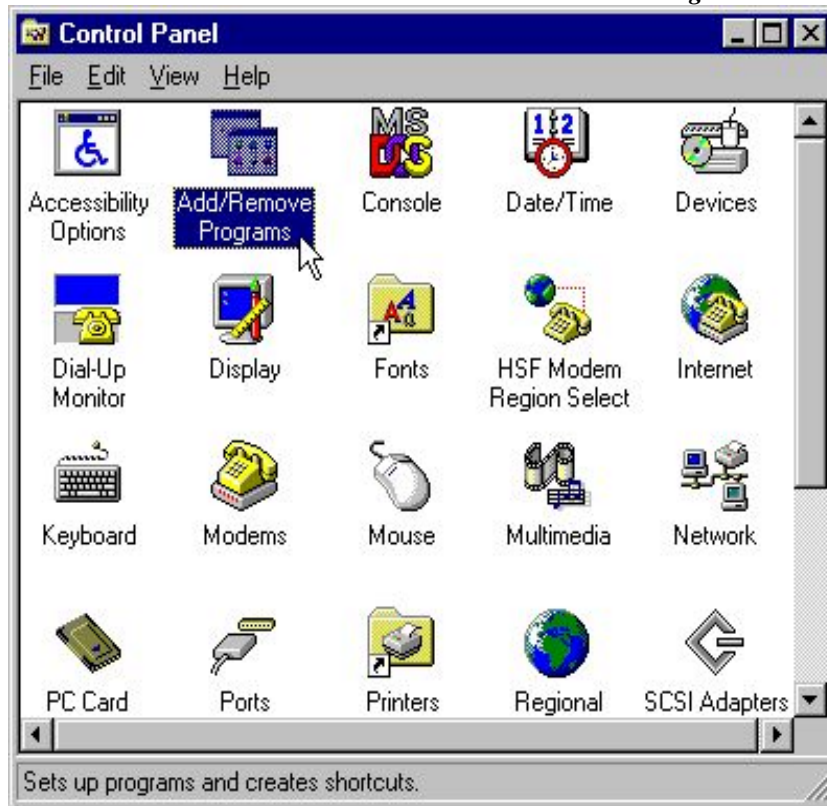


3. Click *Yes* to end this procedure and restart your computer.

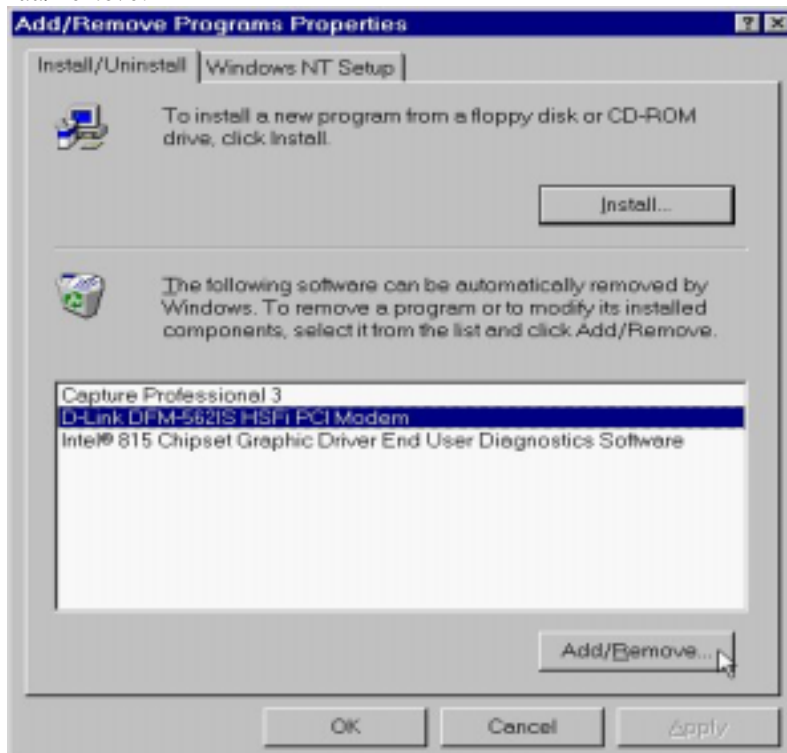


7.3 Windows NT 4.0

1. Move your cursor as following sequence *Start | Settings | Control Panel* and click *Control Panel*. Then double-click on the *Add/Remove Programs* icon.



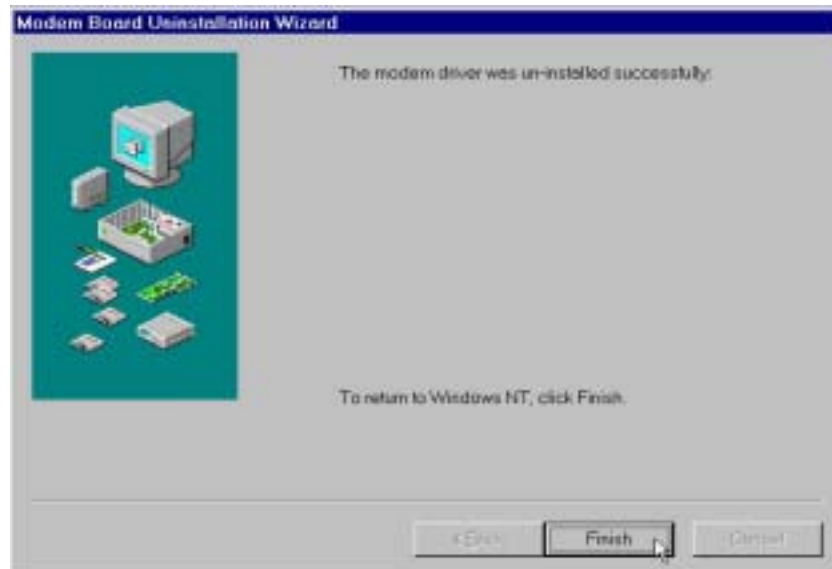
2. Select *D-Link DFM-562IS HSF PCI Modem* from the list and then click *Add/Remove*.



3. Click *Next*.



4. The message of *The modem driver was un-installed successfully* will appear, and click *Finish*.

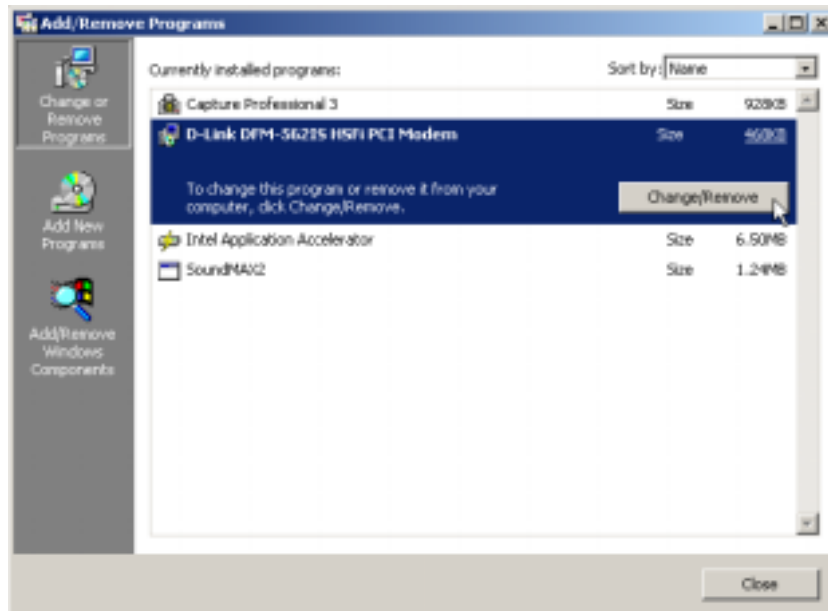


7.4 Windows 2000

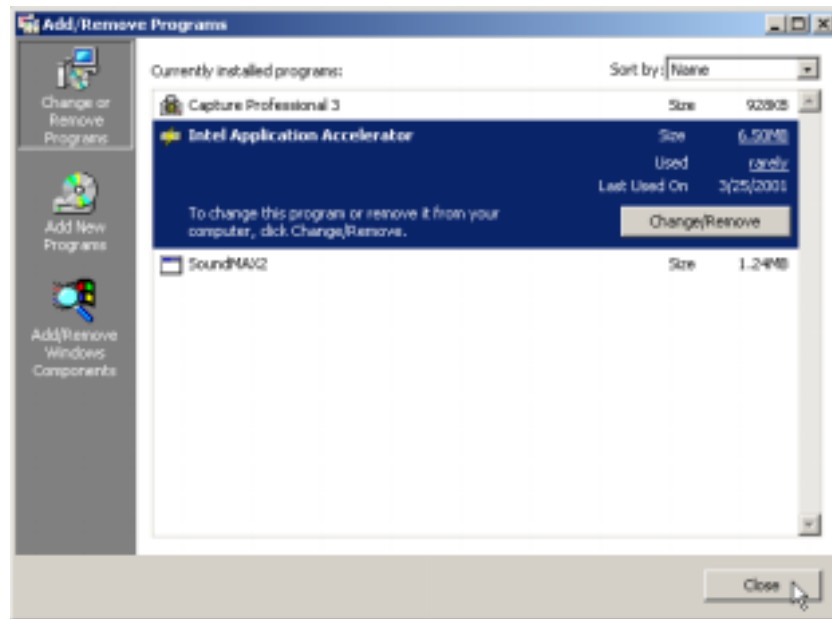
1. Move your cursor as following sequence *Start* | *Settings* | *Control Panel* and click *Control Panel*. Then double-click on the *Add/Remove Programs* icon.



2. Click *D-Link DFM-562IS HSFi PCI Modem*. Then click *Change/Remove*.



3. Click *Close*.

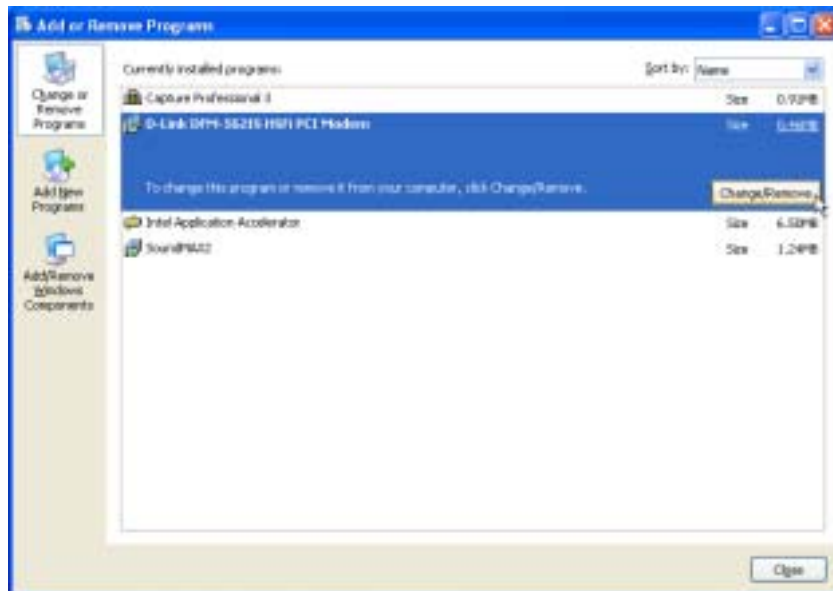


7.5 Windows XP

1. Move your cursor as following sequence *Start \ Settings \ Control Panel* and click *Control Panel*. Then double-click on the *Add or Remove Programs* icon.



2. Click *D-Link DFM-562IS HSFi PCI Modem*. Then click *Change/Remove*.



3. Click **Close**.

