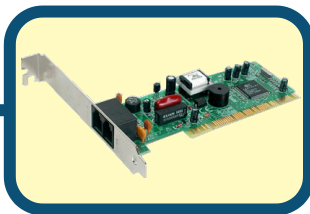


D-Link Quick Installation Guide

D-Link DFM-562IS
Software Modem Card

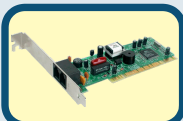


Before Your Begin

If you purchased this Modem to make your Internet connection with PC, you must have an established Internet account from an Internet Service Provider (ISP).

Check Your Package Contents

These are the items included with your D-Link 562IS purchase:



- **D-Link DFM-562IS Software Modem Card**



- **CD-ROM (containing Manual and Q.I.G.)**



- **Phone Cable**



- **D-Link DFM-562IS User's Guide**



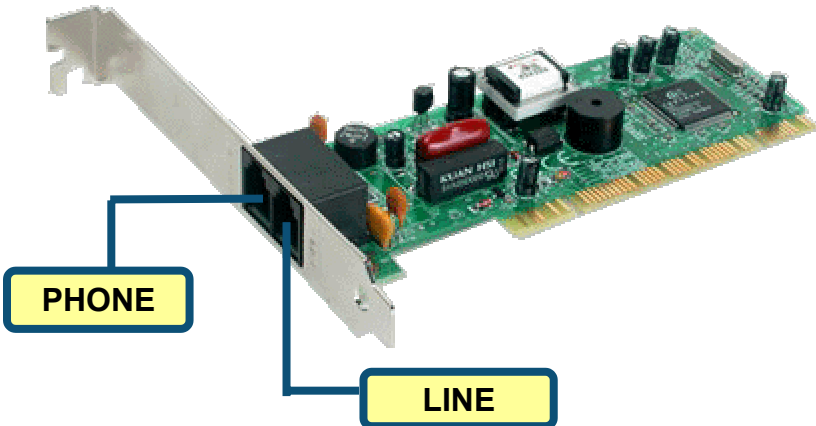
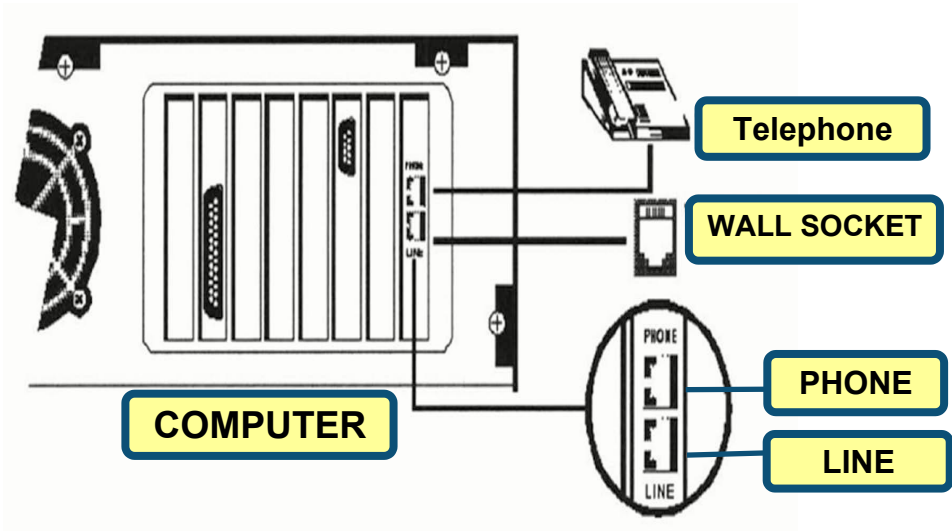
Using a power supply with a different voltage rating will damage and void the warranty for this product.

If any of the above items are missing, please contact your reseller.

1

Hardware Installation

Please unplug the telephone Line and plug the telephone line into the socket on the back of the modem marked LINE.



2

Install Drivers

2.1 Windows 98/ME

When the system was complete, windows will detect the modem automatic, please click **Cancel**. Then insert the driver CD supplied.

Click **Install Drivers**



After system will auto Install Modem.

Please click **Close** to end the window

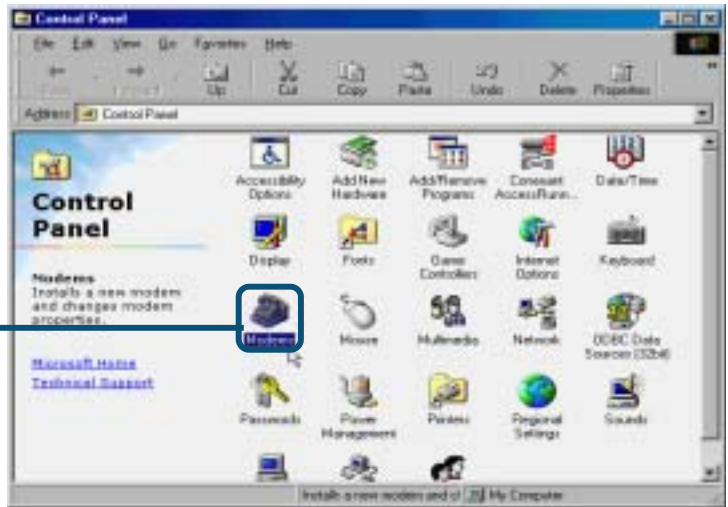
Click **CLOSE**



2.1 Windows 98/ME (continue)

Please select **Start / Settings / Control Panel** and double-click on the **Modems** icon.

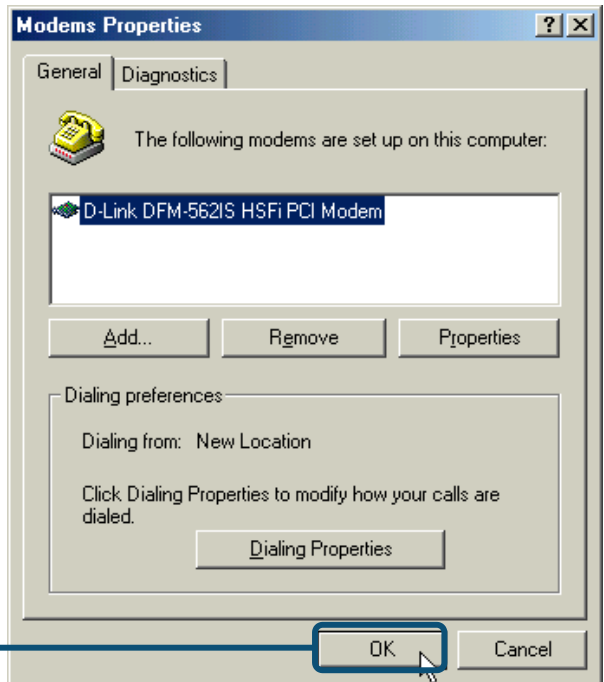
Click **Modems**



Check Modem Model No For **D-Link DFM-562IS HSF PCI Modem**.

If correct the installation is complete then click **OK** to exit.

Click **OK**



2.2 Windows 2K

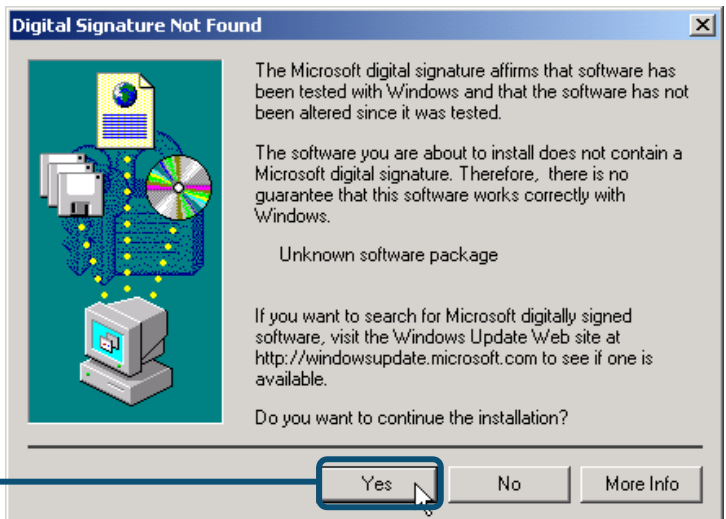
When the system was complete, windows will detect the modem automatic, please click **Cancel**. Then insert the driver CD supplied.

Click **Install Drivers**

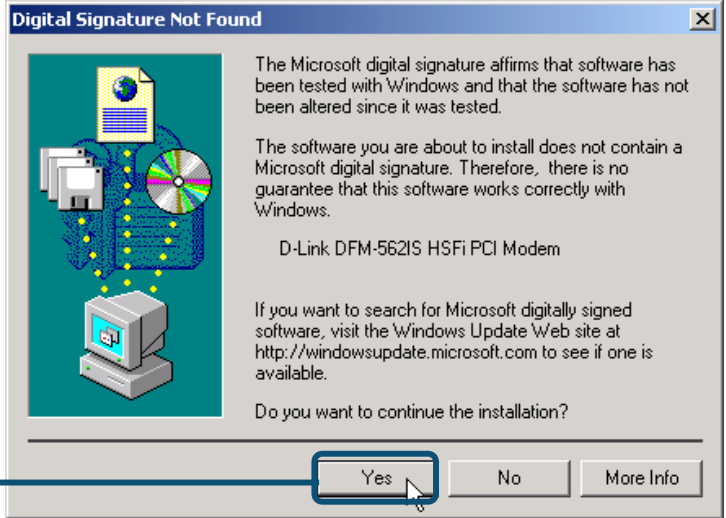


Click **Yes** ignore the message.

Click **Yes**



Click **Yes** ignore the message.



After system will auto Install Modem.

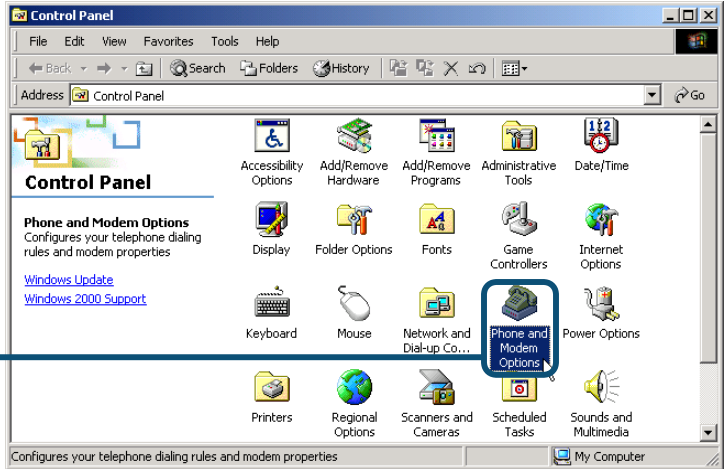
Please click **Close** to end the window



2.2 Windows 2K(continue)

Please select **Start / Settings/Control Panel** and double-click on the **Phone and Modem Options** icon.

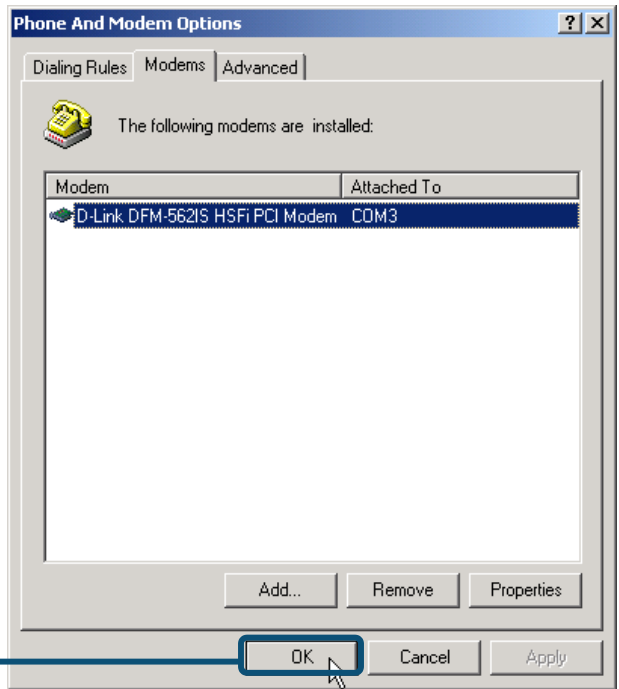
Click **Phone and Modem Options**



Check Modem Model No.
For **D-Link DFM-562IS HSF1 Modem**

If installation is complete
then click **OK** to exit.

Click **OK**



2.3 Windows XP



Click **Install Drivers**

Software Installation



The software you are installing has not passed Windows Logo testing to verify its compatibility with Windows XP. ([Tell me why this testing is important.](#))

Continuing your installation of this software may impair or destabilize the correct operation of your system either immediately or in the future. Microsoft strongly recommends that you stop this installation now and contact the software vendor for software that has passed Windows Logo testing.

Click **Continue Anyway**

Continue Anyway

STOP Installation

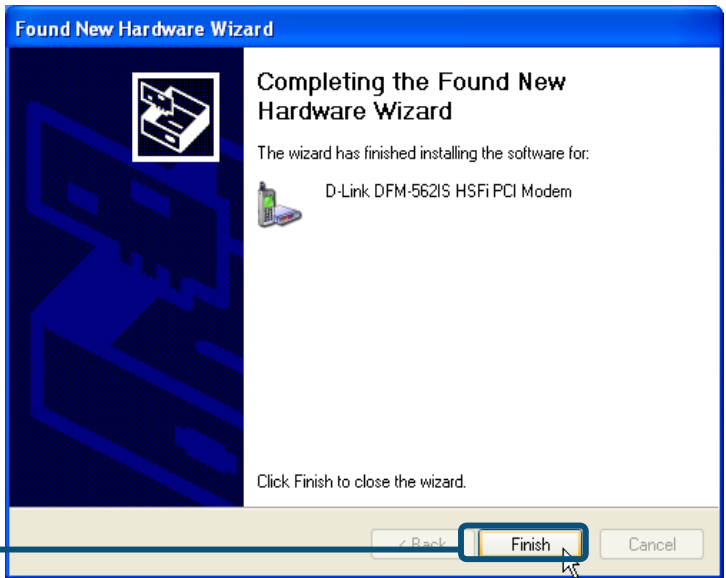
Select the **Install the software automatically [Recommended]** then click **Next** to search for the driver.



Click **Continue Anyway** to skip the warning message.



Install complete

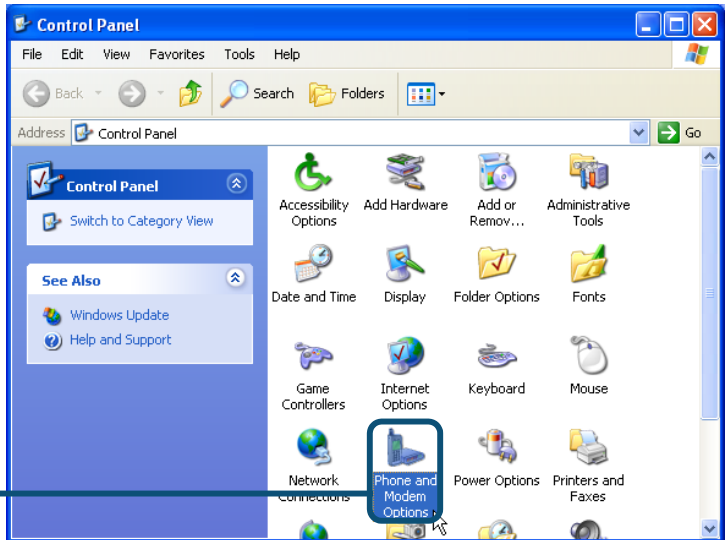


Please click **Close** to end the window



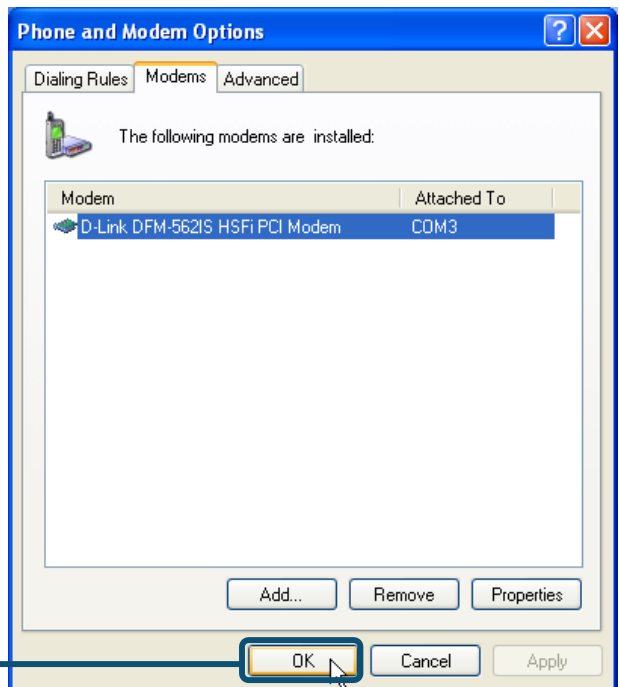
2.3 Windows XP(continue)

Please select **Start / Settings/Control Panel** and double-click on the **Phone and Modem Options** icon.



Check Modem Model No. For **D-Link DFM-562IS HSFi PCI Modem**.

If installation is complete then click **OK** to exit.



Technical Support

You can find software updates and user documentation on the D-Link website.

D-Link provides free technical support for customers within the United States and within Canada for the duration of the warranty period on this product.

U.S. and Canadian customers can contact D-Link technical support through our website, or by phone.

Tech Support for customers within the United States:

D-Link Technical Support over the Telephone:

(877) 453-5465

24 hours a day, seven days a week.

D-Link Technical Support over the Internet:

<http://support.dlink.com>

email:support@dlink.com

Tech Support for customers within Canada:

D-Link Technical Support over the Telephone:

(800) 361-5265

Monday to Friday 8:30am to 9:00pm EST

D-Link Technical Support over the Internet:

<http://support.dlink.ca>

email:support@dlink.ca

D-Link®
Building Networks for People

D-Link Quick Installation Guide

D-Link DFM-562IS
Software Modem Card

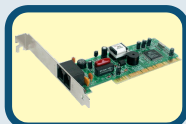


Voraussetzungen

Um mit diesem Modem einen Internetanschluss für Ihren PC einzurichten, benötigen Sie ein bereits bestehendes Konto bei einem Internet Service Provider (ISP).

Prüfen Sie den Paketinhalt

Mit dem Kauf Ihres D-Link 562IS erhalten Sie folgendes Zubehör:



• D-Link DFM-562IS Software Modem Card



• CD-ROM (enthält Handbuch und Garantie)



• Telefonkabel



• D-Link DFM-562IS-
Benutzerhandbuch



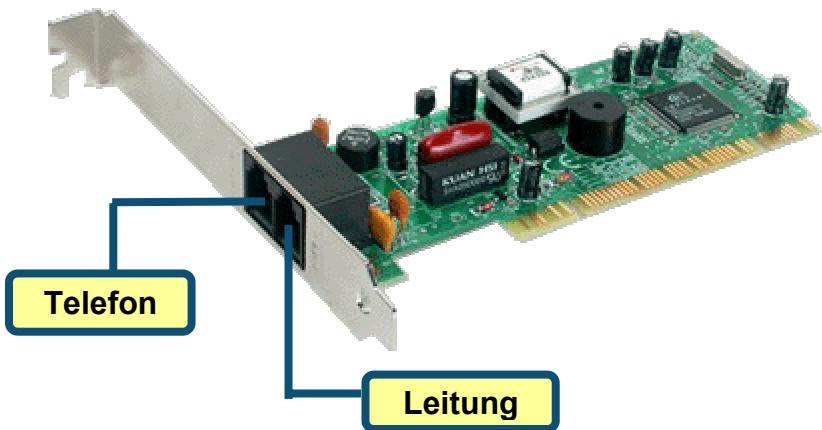
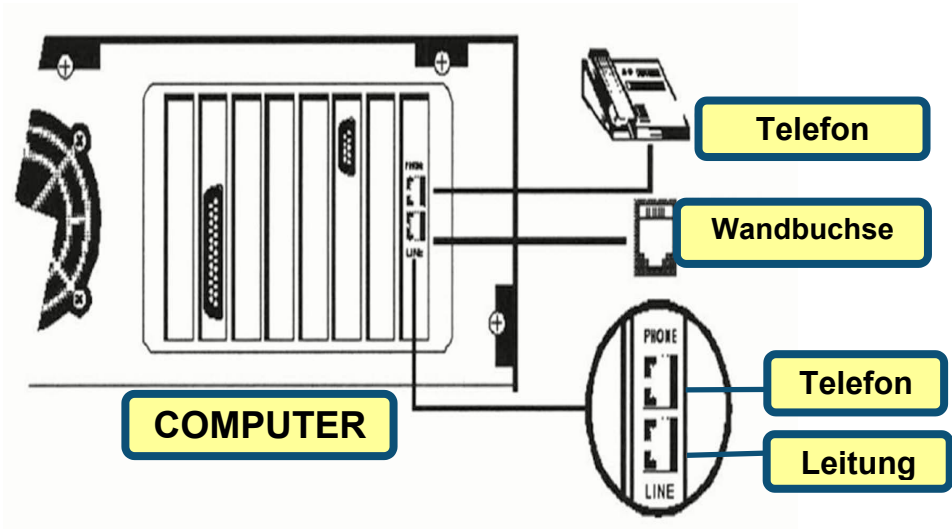
Hinweis: Die Verwendung eines Netzadapters mit abweichender Nennspannung kann zur Beschädigung des Geräts führen sowie zum Verlust aller Garantieansprüche.

Bei Fehlen einiger der oben aufgeführten Positionen kontaktieren Sie bitte Ihren Händler.

1

Hardware-Installation

Stecken Sie Ihr Telefonkabel aus und in die vorgesehene Buchse LINE auf der Rückseite des Modems wieder ein.



2

Treiber-Installation

2.1 Windows 98/ME

Wenn das System vollständig eingerichtet ist, wird das Modem von Windows automatisch erkannt. Klicken Sie auf **Abbrechen** und legen Sie die mitgelieferte CD ein.

Klicken Sie auf **Install Drivers**



Danach installiert das System das Modem automatisch.

Schließen Sie das Fenster mit **Close**.

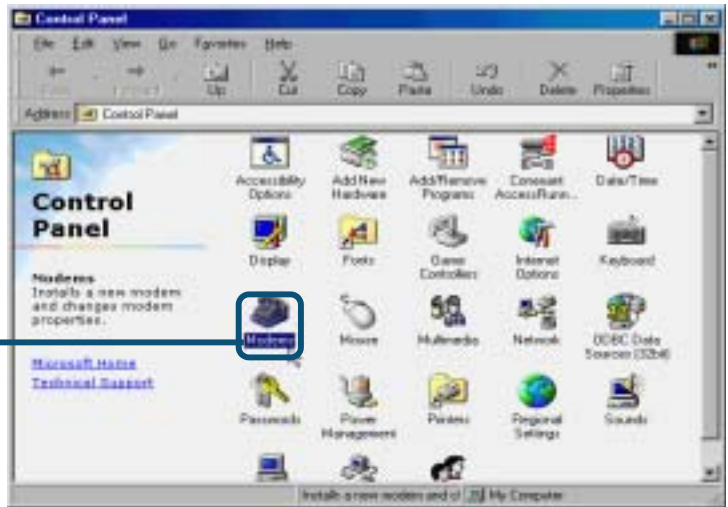
Klicken Sie auf **CLOSE**



2.1 Windows 98/ME (Forts.)

Klicken Sie auf **Start / Einstellungen / Systemsteuerung** und doppelklicken Sie dann auf das Symbol **Modem**.

Klicken Sie auf **Modem**

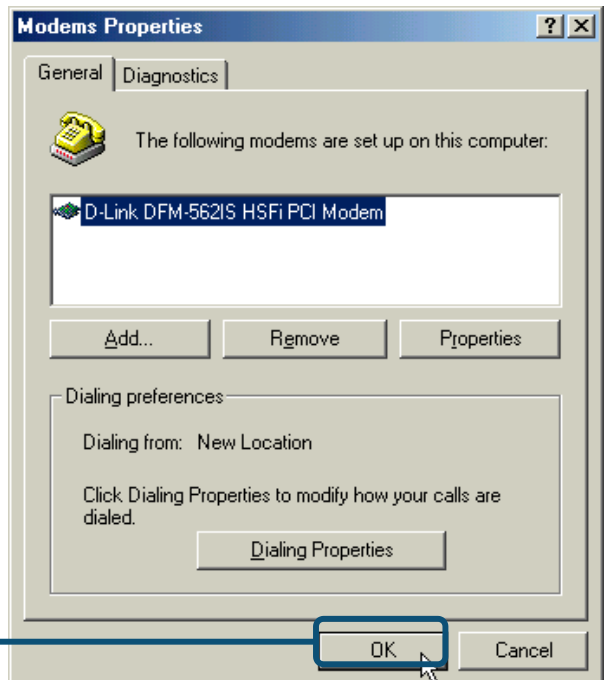


Überprüfen Sie die Modellnummer des Modems:

D-Link DFM-562IS HSFi PCI Modem.

Stimmt diese mit der angezeigten Nummer überein, ist die Installation bereits erfolgt. Klicken Sie zum Beenden auf **OK**.

Klicken Sie auf **OK**.



2.2 Windows 2000

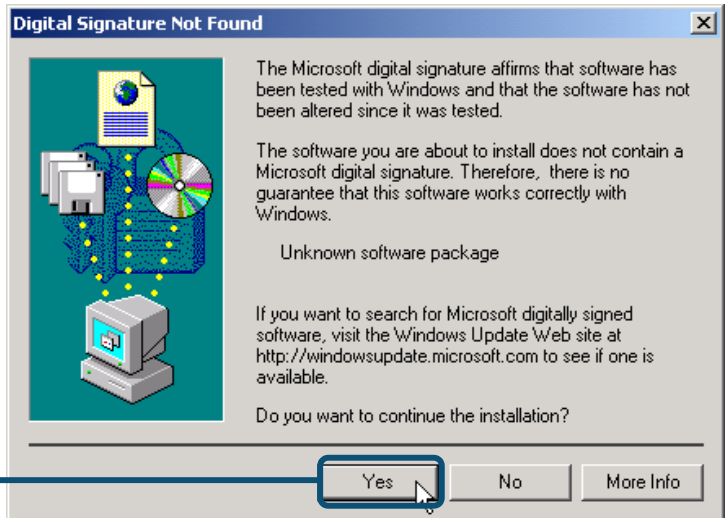
Nach vollständiger Einrichtung des Systems erkennt Windows das Modem automatisch. Klicken Sie auf **Abbrechen**. Legen Sie dann die mitgelieferte Treiber-CD ein.

Klicken Sie auf **Install Drivers**



Klicken Sie auf **Ja**, um die Meldung zu überspringen.

Klicken Sie auf **Ja**



Klicken Sie auf **Ja**, um die Meldung zu überspringen.



Klicken Sie auf **Ja**

Danach installiert das System das Modem automatisch.

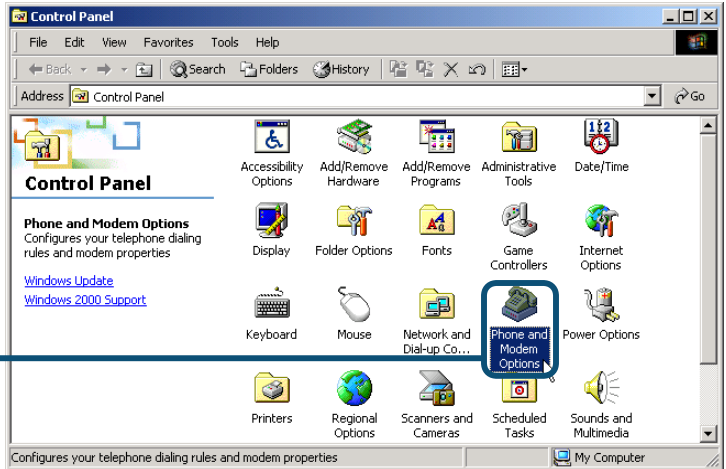
Schließen Sie das Fenster mit **Close**.



Klicken Sie auf **CLOSE**

2.2 Windows 2000 (Forts.)

Klicken Sie auf **Start / Einstellungen / Systemsteuerung** und doppelklicken Sie auf das Symbol **Telefon- und Modemoptionen**.

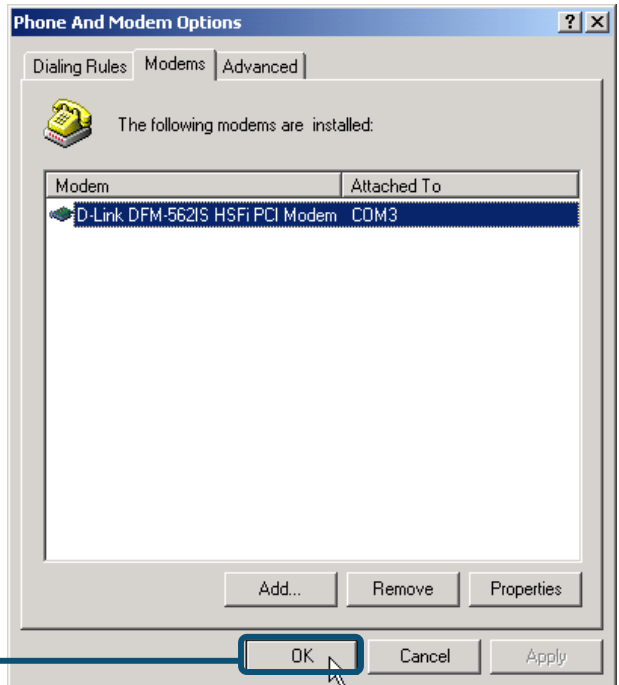


Klicken Sie auf **Telefon- und Modemoptionen**

Überprüfen Sie die Modellnummer des Modems, d.h.:

D-Link DFM-562IS HSF1 Modem.

Nach vollständiger Installation klicken Sie auf **OK**.



Klicken Sie auf **OK**

2.3 Windows XP



Wählen Sie die Option **Software automatisch installieren (Empfohlen)** aus und klicken Sie auf **Weiter**, um nach dem Treiber zu suchen.



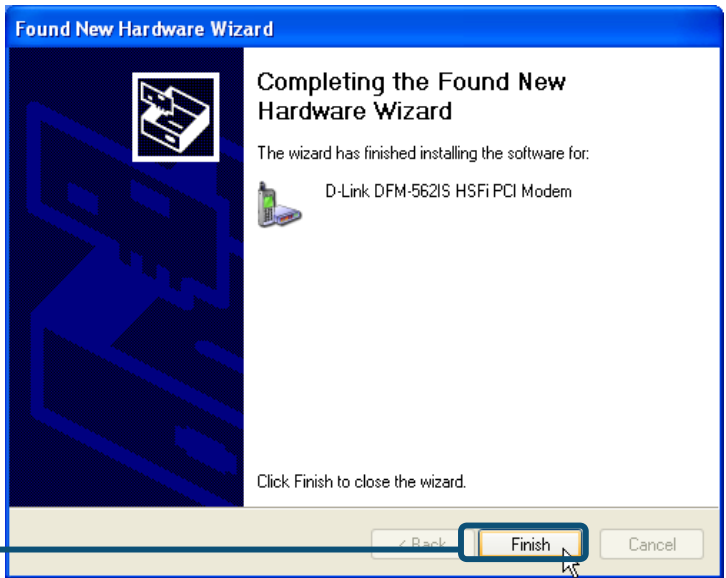
Klicken Sie auf **Weiter**

Klicken Sie auf **Installation fortsetzen**, um die Warnung zu überspringen.



Klicken Sie auf **Installation fortsetzen**

Die Installation ist beendet.



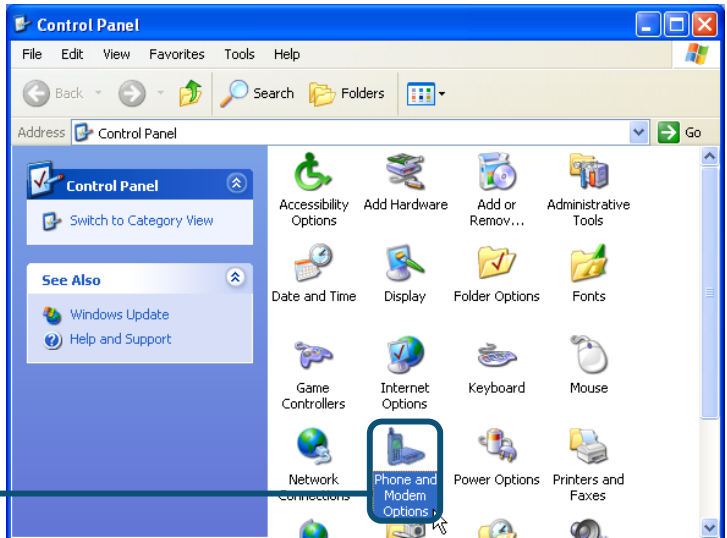
Schließen Sie das Fenster mit **Close**.



2.3 Windows XP (Forts.)

Klicken Sie auf **Start / Einstellungen / Systemsteuerung** und doppelklicken Sie auf das Symbol **Telefon- und Modemoptionen**.

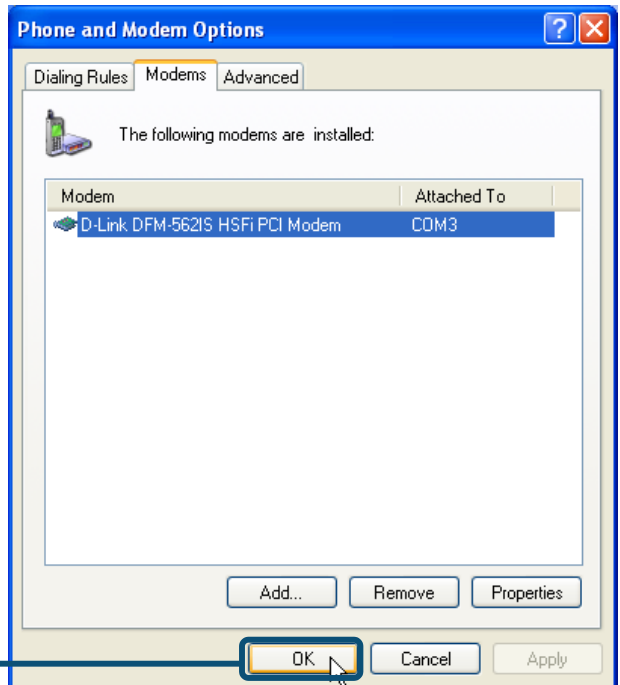
Klicken Sie auf **Telefon- und Modemoptionen**



Überprüfen Sie die Modellnummer des Modems, d.h.: **D-Link DFM-562IS HSFi PCI Modem**.

Nach vollständiger Installation klicken Sie auf **OK**.

Klicken Sie auf **OK**



Technische Unterstützung

Aktualisierte Versionen von Software und Benutzerhandbuch finden Sie auf der Website von **D-Link** unter www.dlink.de

D-Link bietet kostenfreie technische Unterstützung für Kunden in Deutschland, Österreich, der Schweiz und in Osteuropa.

Unsere Kunden können technische Unterstützung über unsere Website oder telefonisch anfordern.

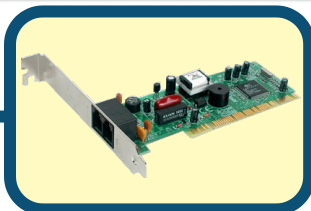
Technische Unterstützung von D-Link per Telefon:
00800 7250 4000

Telefonische technische Unterstützung erhalten Sie montags bis donnerstags von 08.00 bis 19.00 Uhr, freitags von 08.00 bis 17.00 Uhr.

Technische Unterstützung von D-Link im Internet:
www.dlink.de

D-Link[®]
Building Networks for People

D-Link Quick Installation Guide



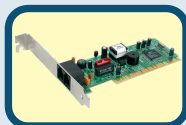
Carte modem logiciel
DFM-562IS D-Link

Avant de commencer

Si vous avez acheté ce modem pour pouvoir vous connecter à l'internet à partir de votre PC, il vous faut un compte internet auprès d'un fournisseur de services internet (ISP).

Vérifiez le contenu de l'emballage

Voici les éléments que doit contenir l'emballage D-Link 562IS :



- Carte modem logiciel DFM-562IS D-Link



- CD-ROM (contenant le manuel et le guide d'installation rapide)



- Câble téléphonique



- Guide d'utilisation du DFM-562IS D-Link



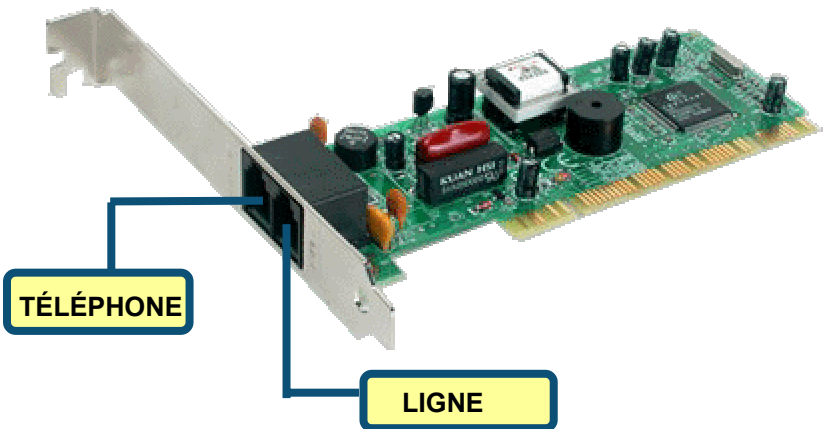
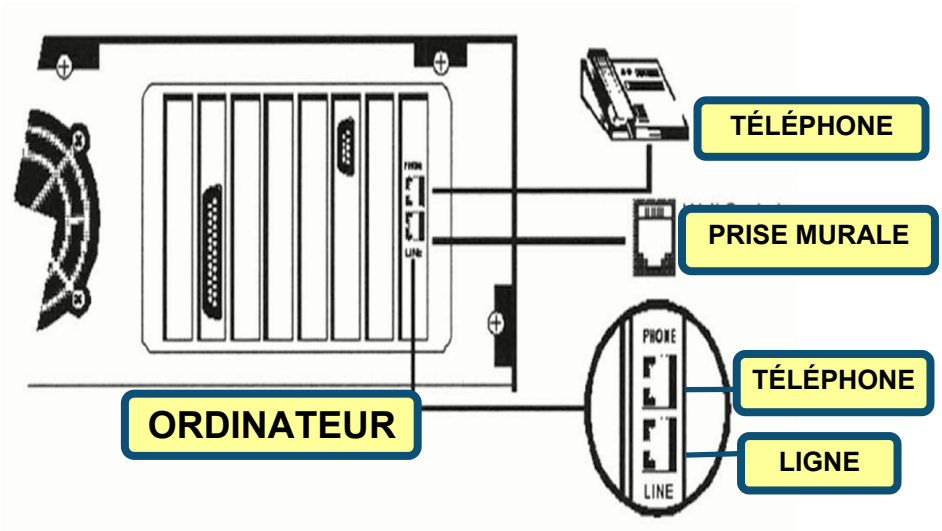
L'alimentation du modem sous une tension différente de la tension nominale endommagera ce produit et annulera la garantie

Si l'un des éléments ci-dessus manque, contactez votre revendeur.

1

Installation du matériel

Débranchez la ligne téléphonique et branchez-la sur la prise marquée LINE qui se trouve à l'arrière du modem.



2

Installation des pilotes

2.1 Windows 98/ME

Une fois le matériel installé, Windows détecte automatiquement le modem. Cliquez sur **Annuler**. Puis mettez le CD fourni dans le lecteur de CD-ROM.

Cliquez sur **Install Drivers**



Le système installe automatiquement le modem.

Cliquez sur **CLOSE** pour fermer la fenêtre.

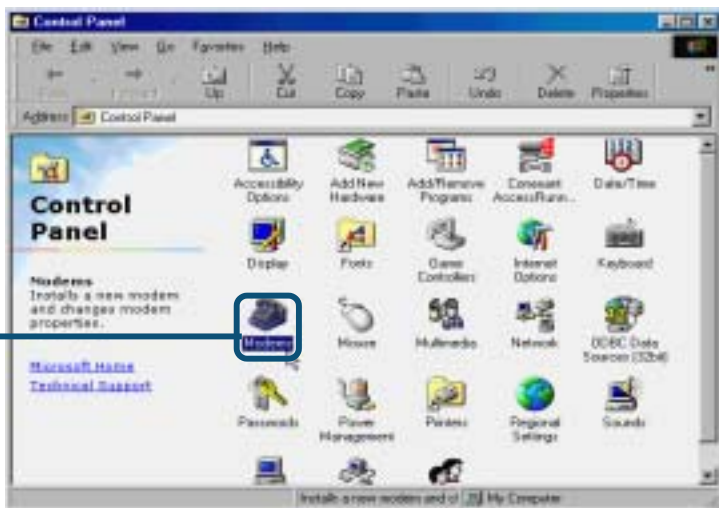
Cliquez sur **CLOSE**



2.1 Windows 98/ME (suite)

Sélectionnez **Démarrer** / **Paramètres** / **Panneau de configuration** et double-cliquez sur l'icône **Modems**

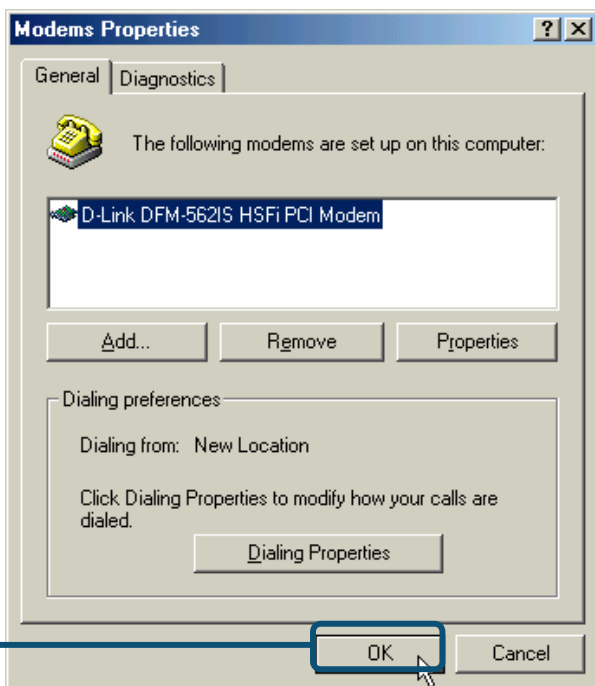
Cliquez sur **Modems**



Vérifiez le numéro de modèle du **modem PCI HSF1 DFM-562IS D-Link**.

S'il est correct, c'est que l'installation est terminée. Cliquez sur **OK** pour quitter.

Cliquez sur **OK**



2.2 Windows 2K

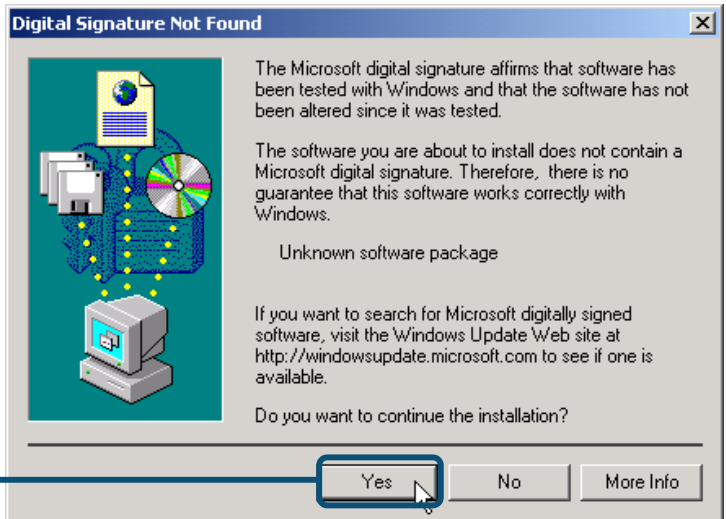
Une fois le matériel installé, Windows détecte automatiquement le modem. Cliquez sur **Annuler**. Puis mettez le CD fourni dans le lecteur de CD-ROM.

Cliquez sur **Install Drivers**

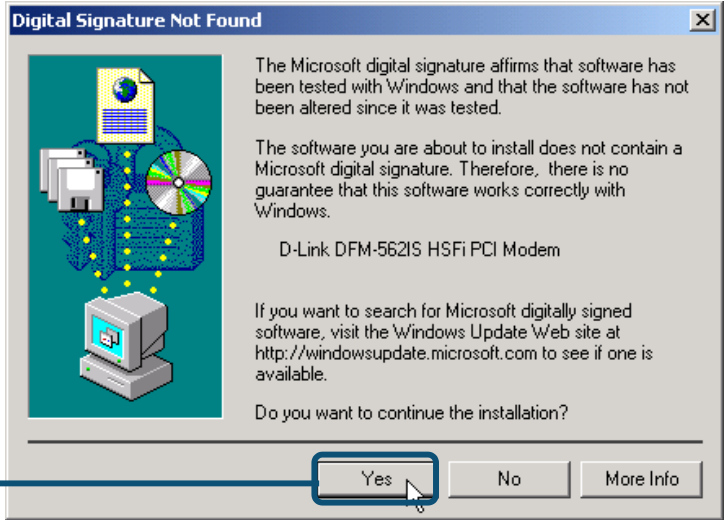


Cliquez sur **Oui** pour ignorer le message.

Cliquez sur **Yes**



Cliquez sur **Oui** pour ignorer le message.



Cliquez sur **Yes**

Le système installe automatiquement le modem.

Cliquez sur **CLOSE** pour fermer la fenêtre.

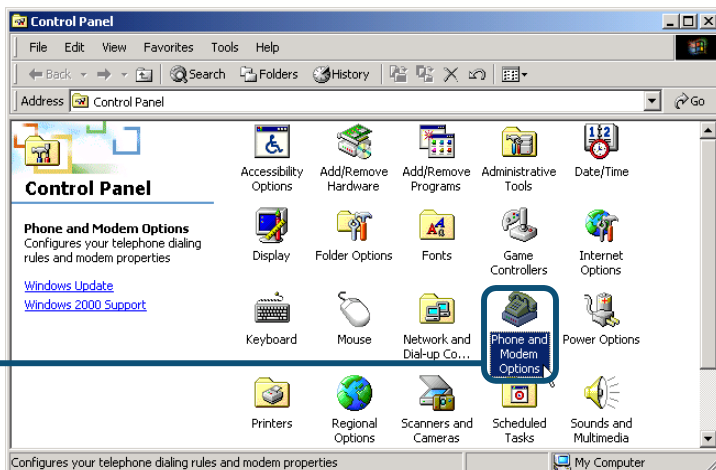


Cliquez sur **CLOSE**

2.2 Windows 2K (suite)

Sélectionnez **Démarrer / Paramètres / Panneau de configuration** et double-cliquez sur l'icône **Options de modems et téléphonie**.

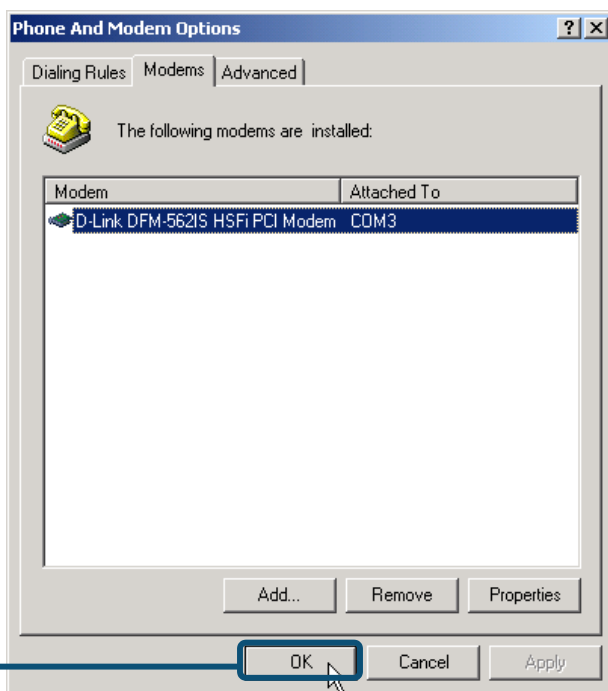
Cliquez sur **Options de modems et téléphonie**



Vérifiez le numéro de modèle du modem **DFM-5621S HSF1 D-Link**.

S'il est correct, c'est que l'installation est terminée. Cliquez sur **OK** pour quitter.

Cliquez sur **OK**



2.3 Windows XP



Cliquez sur
Install Drivers

Software Installation



The software you are installing has not passed Windows Logo testing to verify its compatibility with Windows XP. ([Tell me why this testing is important.](#))

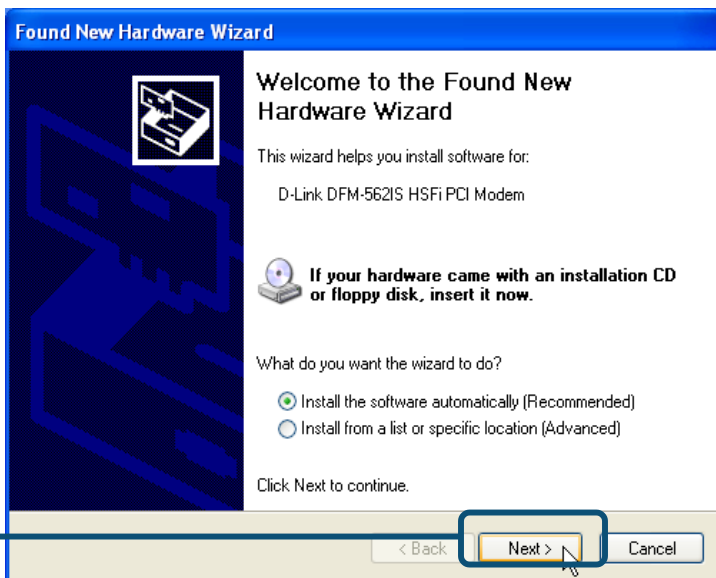
Continuing your installation of this software may impair or destabilize the correct operation of your system either immediately or in the future. Microsoft strongly recommends that you stop this installation now and contact the software vendor for software that has passed Windows Logo testing.

Cliquez sur
Continuer

Continue Anyway

STOP Installation

Sélectionnez l'option **Installer le logiciel automatiquement [recommandé]**, puis cliquez sur **Suivant** pour rechercher le pilote.



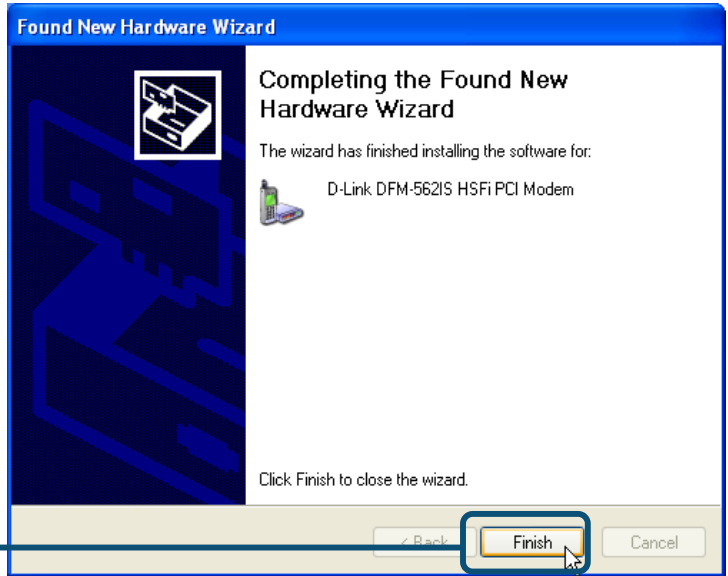
Cliquez sur **Suivant**

Cliquez sur **Continuer** pour sauter le message d'avertissement.



Cliquez sur **Continuer**

L'installation est terminée.



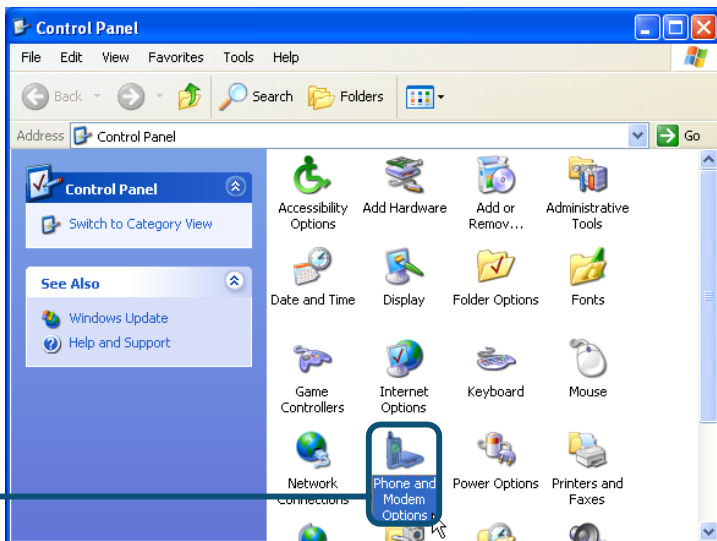
Cliquez sur **CLOSE** pour fermer la fenêtre.



2.3 Windows XP (suite)

Sélectionnez **Démarrer / Paramètres / Panneau de configuration** et double-cliquez sur l'icône **Options de modems et téléphonie**.

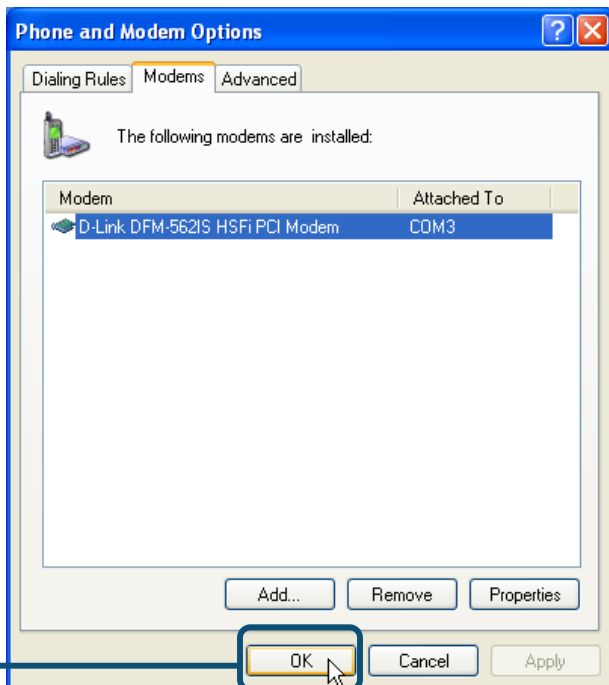
Cliquez sur **Options de modems et téléphonie**



Vérifiez le numéro de modèle du modem **DFM-562IS HSFi PCI D-Link**.

S'il est correct, c'est que l'installation est terminée. Cliquez sur **OK** pour quitter.

Cliquez sur **OK**



Assistance technique

Vous trouverez la documentation et les logiciels les plus récents sur le site web **D-Link**.

Le service technique de **D-Link** est gratuit pour les clients aux Etats-Unis durant la période de garantie.

Ceux-ci peuvent contacter le service technique de **D-Link** par notre site internet ou par téléphone.

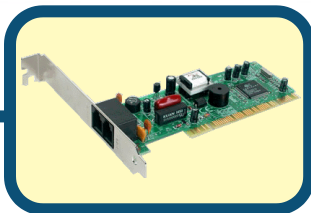
Assistance technique D-Link par téléphone :
0 820 0803 03

Assistance technique D-Link sur internet :
Web : <http://www.dlink.fr>
E-mail : support@dlink.fr

D-Link[®]
Building Networks for People

D-Link Quick Installation Guide

D-Link DFM-562IS
Software Modem Card

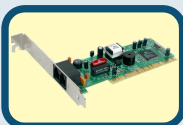


Antes de empezar

Si se ha adquirido este módem para establecer una conexión Internet con un PC, se ha de disponer de una cuenta Internet con un proveedor de servicios Internet (ISP).

Comprobar el contenido del paquete

Éstos son los artículo incluidos en el D-Link 562IS:



• D-Link DFM-562IS Software Modem Card



• CD-ROM (contiene manual y guía de instalación rápida)



• Cable telefónico



• Guía del usuario del D-Link DFM-562IS



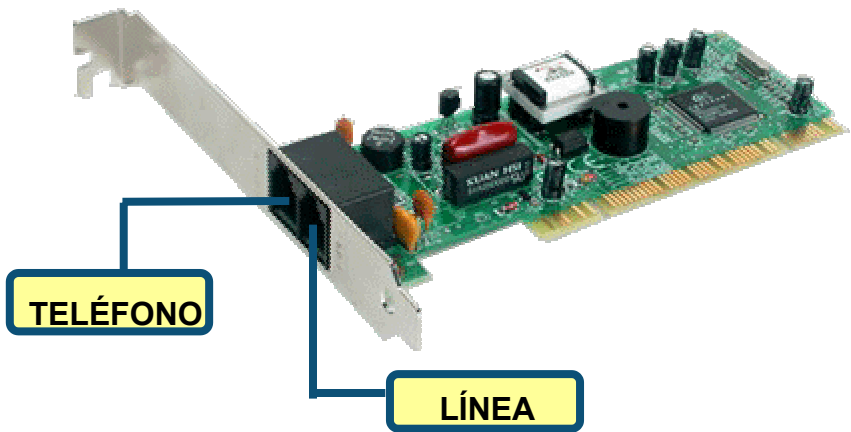
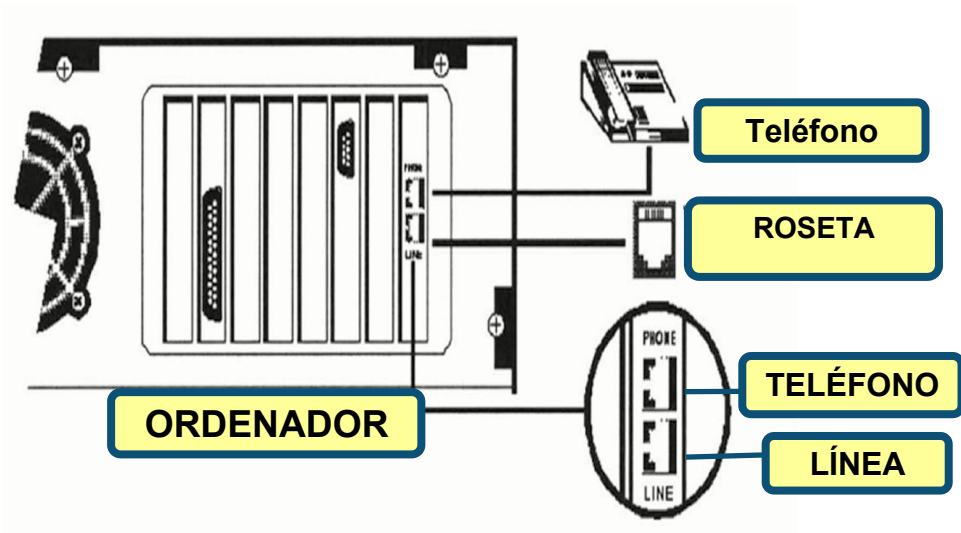
El uso de una fuente de alimentación con distinto voltaje puede ser perjudicial y anular la garantía de este producto.

Si falta alguno de estos componentes, por favor contacte con su proveedor.

1

Instalar el hardware

Desconectar la línea telefónica y conectarla en la toma del panel trasero del módem, marcada como LINE.



2

Instalar controladores

2.1 Windows 98/ME

Cuando el sistema esté completo, Windows detectará automáticamente el módem; hacer click en **Cancel**. Después introducir el CD suministrado.

Hacer click en **Install Drivers**



El sistema instalará automáticamente el módem.

Hacer click en **Close** para cerrar la ventana.

Hacer click en **CLOSE**



2.1 Windows 98/ME (continuación)

Seleccionar **Start / Settings / Control Panel** y hacer doble click en el icono **Modems**.

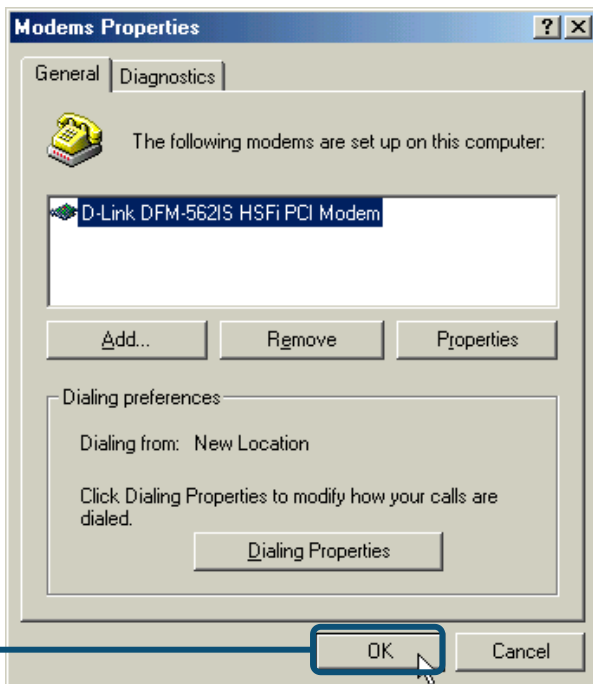
Hacer click en **Modems**



Comprobar el nº de modelo del módem **D-Link DFM-562IS HSFi PCI Modem**.

Si es correcto, la instalación ha finalizado; hacer click en **OK** para salir.

Hacer click en **OK**



2.2 Windows 2K

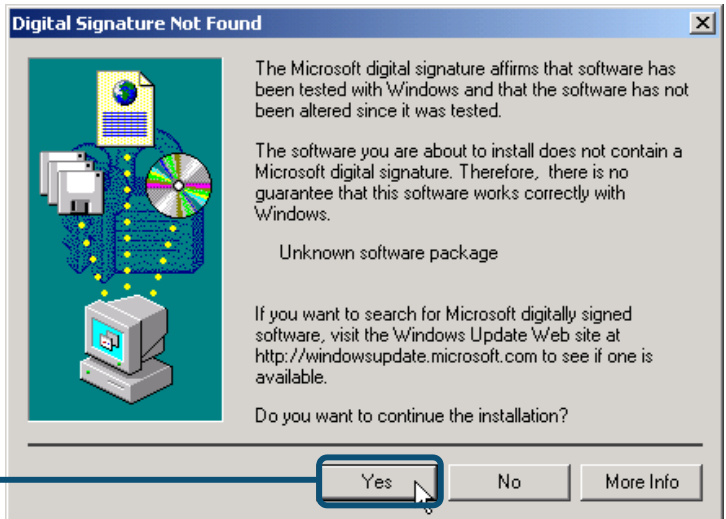
Cuando el sistema esté completo, Windows detectará automáticamente el módem; hacer click en **Cancel**. Después introducir el CD suministrado.

Hacer click en **Install Drivers**

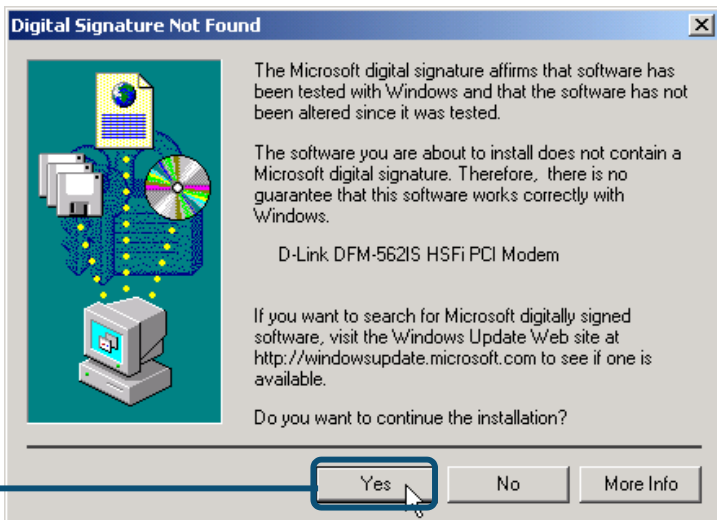


Hacer click en **Yes** para ignorar el

Hacer click en **Yes**



Hacer click en **Yes**
para ignorar el



Hacer click
en **Yes**

El sistema instalará
automáticamente el
módem.

Hacer click en **Close**
para cerrar la ventana.

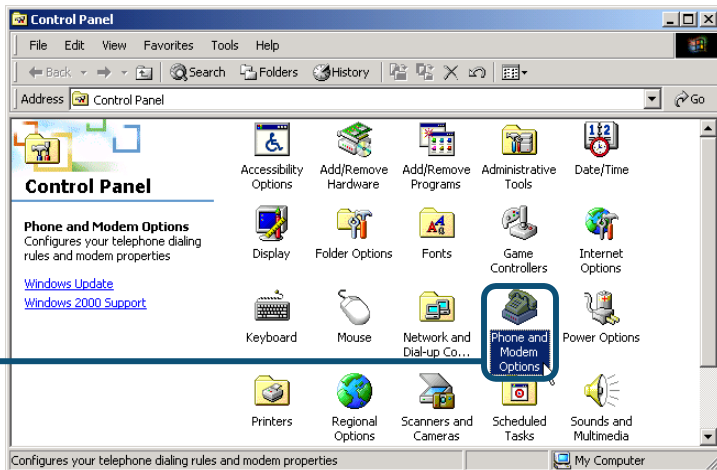


Hacer click
en **CLOSE**

2.2 Windows 2K(continuación)

Seleccionar **Start / Settings / Control Panel** y hacer doble click en el icono **Phone and Modem Options**.

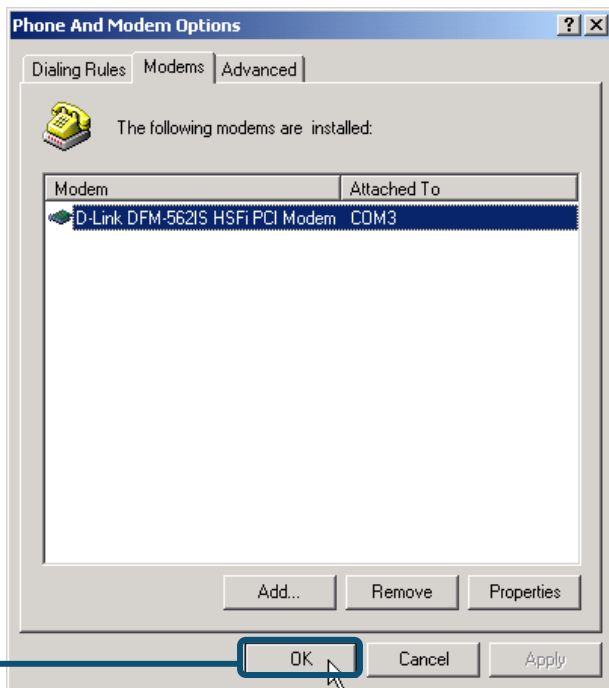
Hacer click en **Phone and Modem Options**



Comprobar el n° de modelo del módem **D-Link DFM-562IS HSF i Modem**.

Si la instalación ha finalizado, hacer click en **OK** para salir.

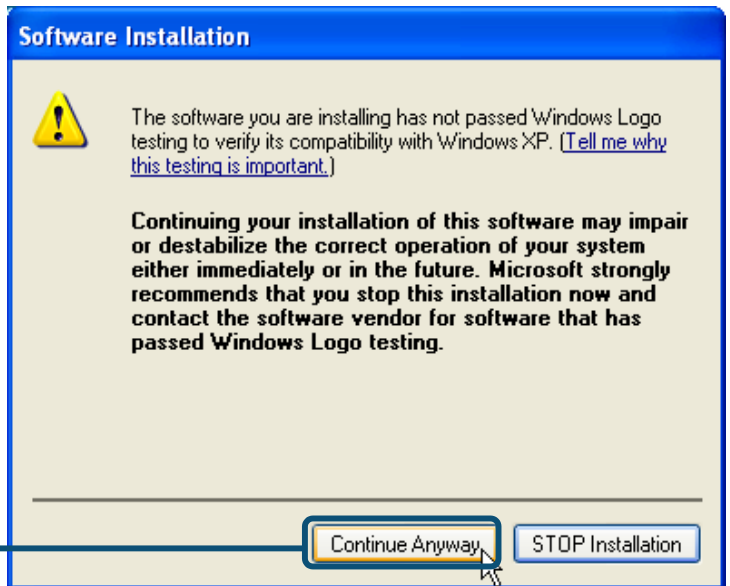
Hacer click en **OK**



2.3 Windows XP



Hacer click en
Install Drivers



Hacer click en
Continue

Seleccionar **Install the software automatically [Recommended]**; después hacer click en **Next** para buscar el controlador.



Hacer click en **Continue Anyway** para obviar el mensaje de advertencia.



Completar la instalación



Hacer click en **Finish**

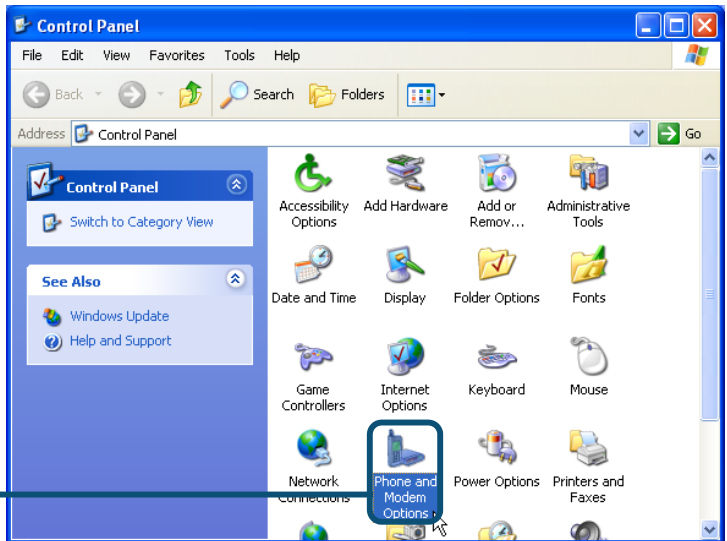
Hacer click en **Close** para cerrar la ventana



Hacer click en **CLOSE**

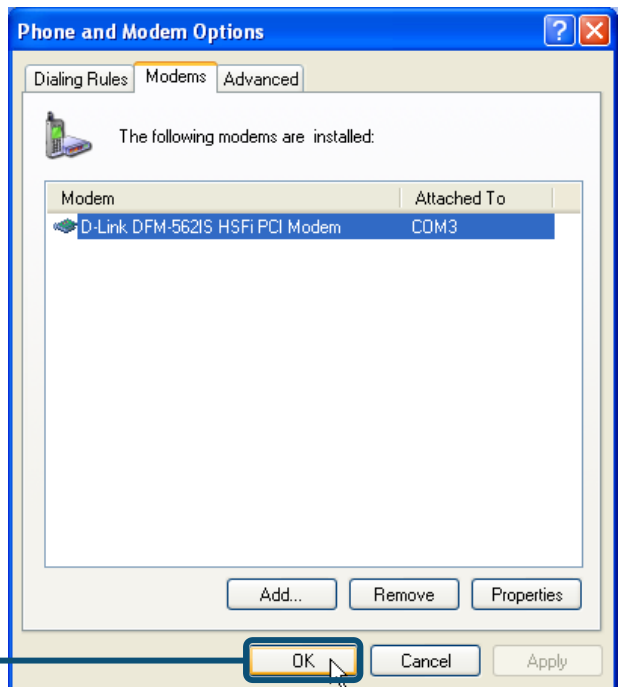
2.3 Windows XP(continuación)

Seleccionar **Start / Settings / Control Panel** y hacer doble click en el icono **Phone and Modem Options**.



Comprobar el nº de modelo del módem **D-Link DFM-562IS HSF PCI Modem**.

Si la instalación ha finalizado, hacer click en **OK** para salir.



Asistencia Técnica

Puede encontrar el software más reciente y documentación para el usuario en el sitio web de **D-Link** .

D-Link ofrece asistencia técnica gratuita para clientes dentro de España durante el periodo de garantía del producto.

Los clientes españoles pueden ponerse en contacto con la asistencia técnica de **D-Link** a través de nuestro sitio web o por teléfono.

Asistencia Técnica de D-Link por teléfono:

93-4090775

de lunes a viernes desde las 9:00 hasta las 14:00 y de las 15:30 hasta las 18:30

Asistencia Técnica de D-Link a través de Internet:

<http://www.dlink.es/supporto/main/view.html>

email: soporte@dlink.es

D-Link®
Building Networks for People

D-Link Quick Installation Guide



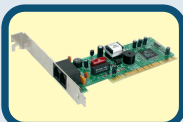
Scheda modem
D-Link DFM-562IS

Prima di cominciare

Se si desidera utilizzare il Modem per connettersi a Internet da un PC, è necessario richiedere un account Internet a un Internet Service Provider (ISP).

Contenuto del pacchetto

Il pacchetto del modem D-Link 562IS include i seguenti componenti:



• Scheda Modem D-Link DFM-562IS



• CD-ROM (con manuale utente e manuale rapido d'installazione.)



• Cavo telefonico



• D-Link DFM-562IS
User's Guide



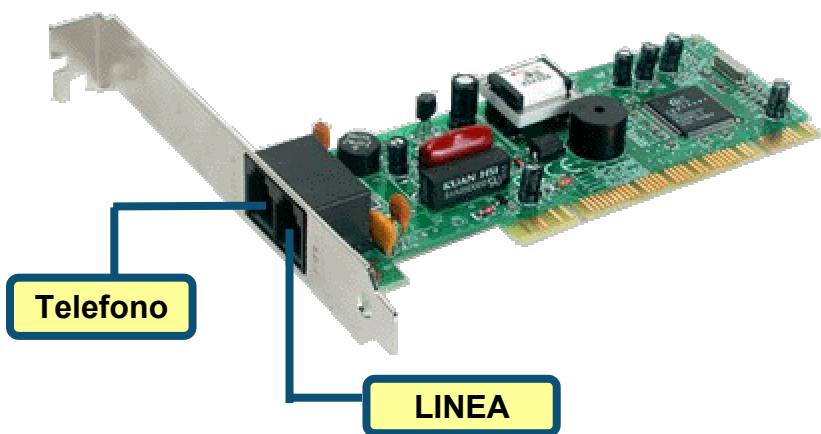
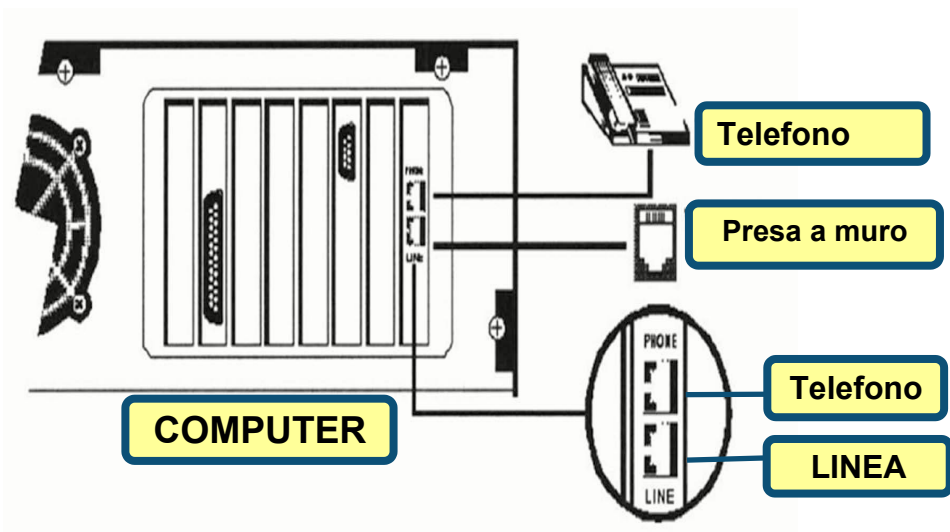
L'utilizzo di un trasformatore differente può danneggiare il dispositivo e compromettere la garanzia.

Se uno dei componenti dovesse risultare mancante, contattare il rivenditore .

1

Installazione hardware

Disconnettere la linea telefonica e connetterla al connettore LINE posto sul pannello posteriore del modem..



2

Installazione dei driver

2.1 Windows 98/ME

Quando il sistema è completo, Windows individua automaticamente il modem. Cliccare su **Cancel** e inserire il CD dei driver.

Cliccare su **Install Drivers**



Il sistema installa automaticamente il Modem.

Cliccare su **Close** per chiudere la finestra

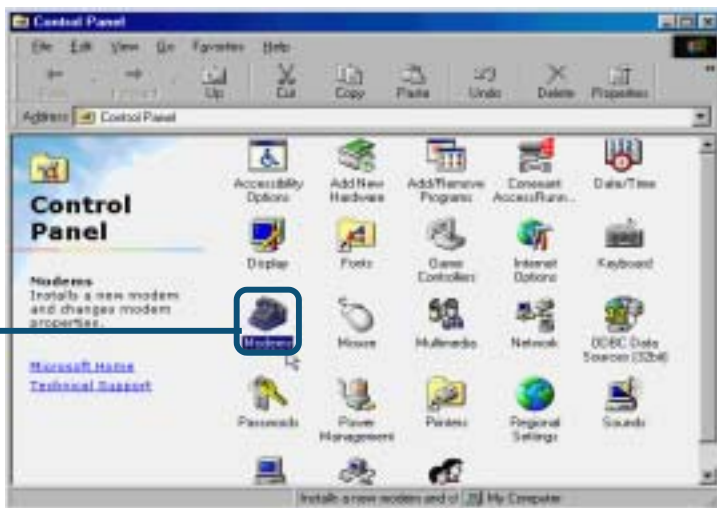
Cliccare su **CLOSE**



2.1 Windows 98/ME (continua)

Selezionare **Start / Impostazioni / Pannello di Controllo**.
Fare doppio clic sull'icona **Modem**.

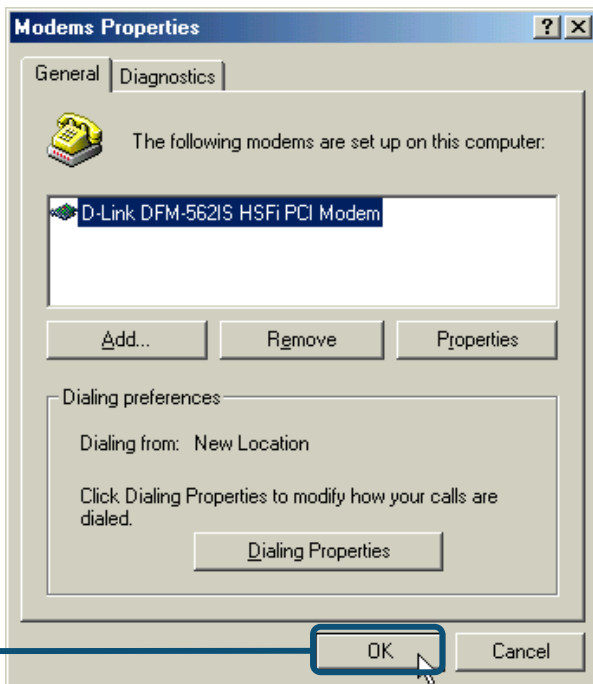
Cliccare su **Modem**



Verificare il numero di modello per il modem PCI **D-Link DFM-562IS HSF1**.

Se è corretto, l'installazione è completa. Cliccare su **OK** per uscire.

Cliccare su **OK**



2.2 Windows 2K

Quando il sistema è completo, Windows individua automaticamente il modem. Cliccare su **Cancel** e inserire il CD dei driver.

Cliccare su **Install Drivers**

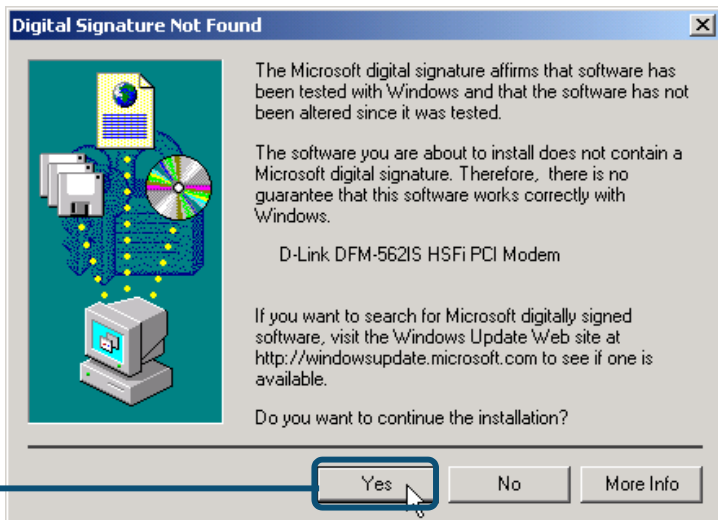


Cliccare su **Si** per ignorare il

Cliccare su **Si**



Cliccare su **Si** per ignorare il messaggio.



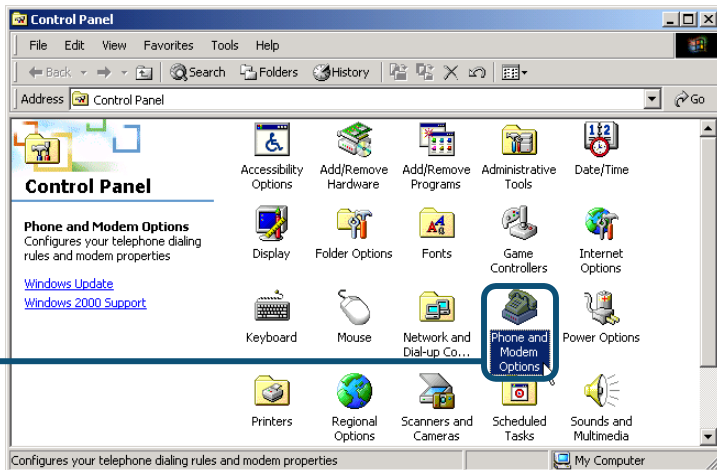
Il sistema installa automaticamente il modem.

Cliccare su **Close** per chiudere la finestra



2.2 Windows 2K(continua)

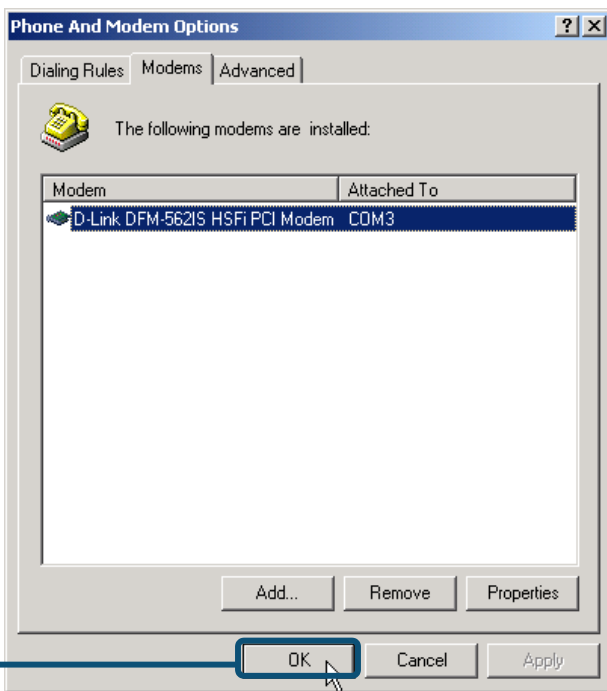
Selezionare **Start / Impostazioni/Pannello di Controllo**. Fare doppio clic sull'icona **Opzioni Telefono e Modem**



Cliccare su
**Opzioni Telefono
e modem**

Verificare il numero di modello per il modem **D-Link DFM-562IS HSF1**

Se l'installazione è completa ,
cliccare su **OK** per uscire.



Cliccare su **OK**

2.3 Windows XP



Cliccare su
Install Drivers

Software Installation



The software you are installing has not passed Windows Logo testing to verify its compatibility with Windows XP. ([Tell me why this testing is important.](#))

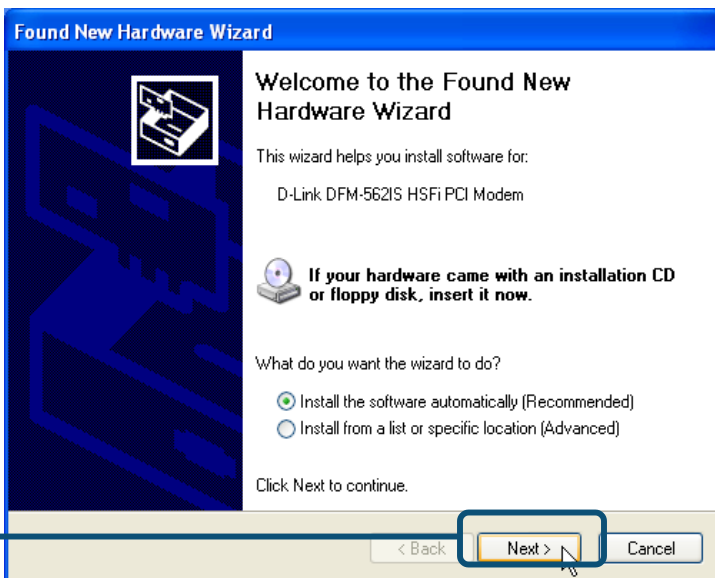
Continuing your installation of this software may impair or destabilize the correct operation of your system either immediately or in the future. Microsoft strongly recommends that you stop this installation now and contact the software vendor for software that has passed Windows Logo testing.

Cliccare su
Continua

Continue Anyway

STOP Installation

Selezionare **Installa automaticamente il software [Raccomandato]** e cliccare su **Avanti** per avviare la ricerca.



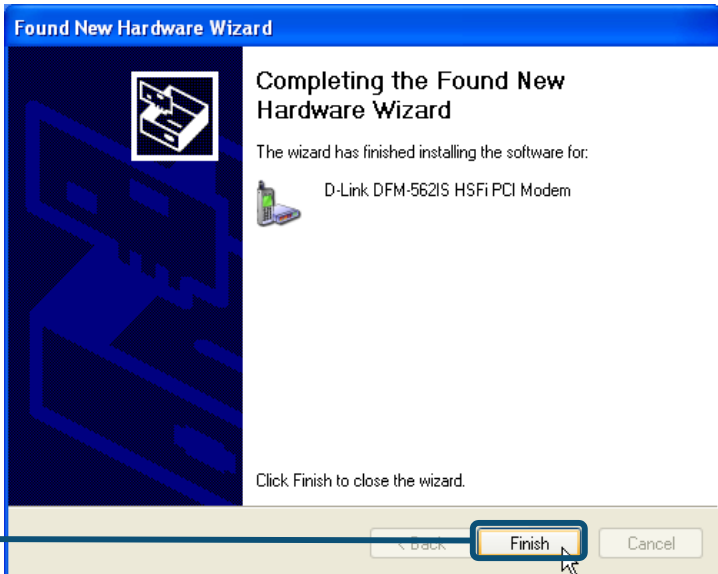
Cliccare su **Avanti**

Cliccare su **Continua** per ignorare il messaggio.



Cliccare su **Continua**

L'installazione è terminata

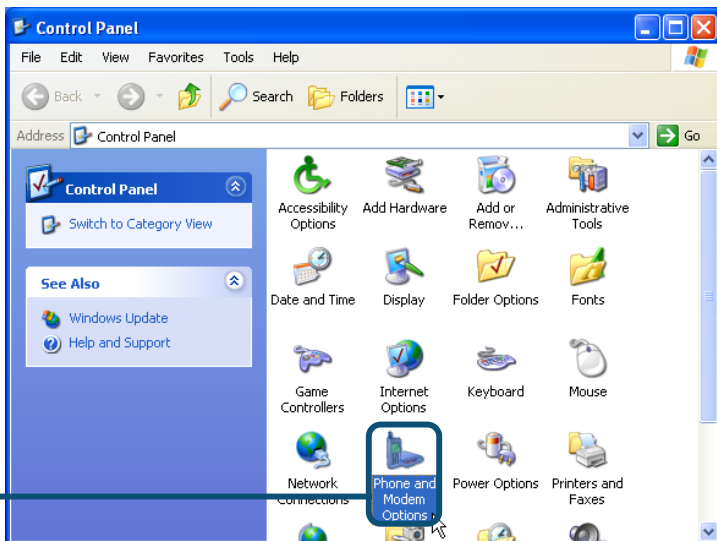


Cliccare su **Close** per chiudere la finestra



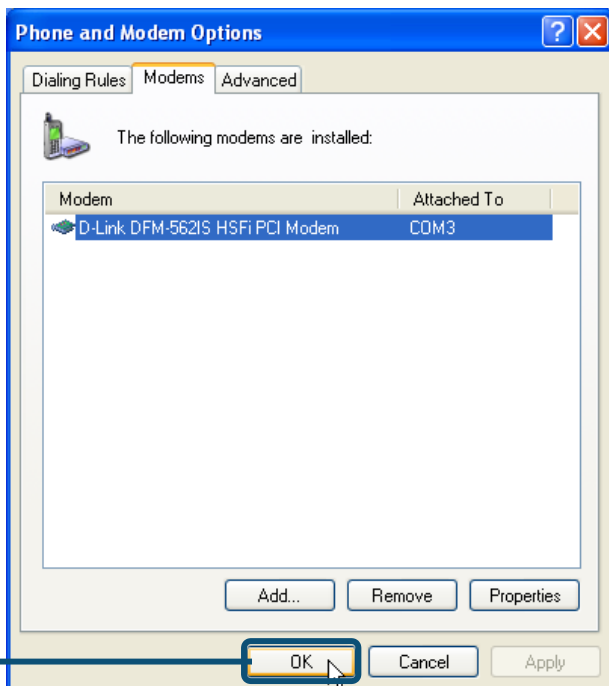
2.3 Windows XP(continua)

Selezionare **Start / Impostazioni/Pannello di Controllo** e fare doppio clic sull'icona **Opzioni Telefono e Modem** .



Cliccare su **Opzioni Telefono e Modem**

Verificare il numero di modello per il modem PCI **D-Link DFM-562IS HSF**i. Se l'installazione è terminata, cliccare su **OK** per uscire.



Cliccare su **OK**

Supporto tecnico

Le ultime versioni del software e la documentazione aggiornata sono disponibili al sito **D-Link**.

D-Link fornisce un supporto tecnico gratuito ai clienti residenti in Italia per tutto il periodo di validità della garanzia del prodotto.

I clienti residenti in Italia possono contattare il supporto tecnico **D-Link** telefonicamente o attraverso il Web.

Supporto tecnico D-Link telefonico:

02-39607160

dal Lunedì al Venerdì dalle ore 9.00 alle ore 19.00 con orario continuato

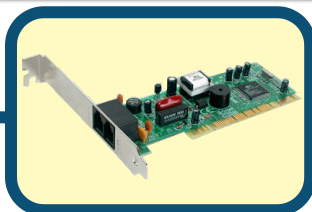
Supporto tecnico D-Link via Internet:

<http://www.dlink.it/supporto/main/view.html>

email: tech@dlink.it

D-Link[®]
Building Networks for People

D-Link Quick Installation Guide



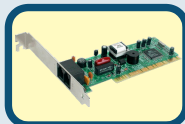
D-Link DFM-562IS
внутренний программ
ный модем

Прежде чем начать

Если вы планируете использовать данный модем для соединения компьютера с Интернет, то вы должны иметь учетную запись у вашего провайдера Интернет.

Проверьте содержимое комплекта

Следующие компоненты включены в поставку D-Link 562IS:



• Внутренний программный модем D-Link DFM-562IS



• CD-ROM (содержит руководство пользователя и руководство по быстрой установке)



• Телефонный кабель



• Руководство пользователя D-Link DFM-562IS



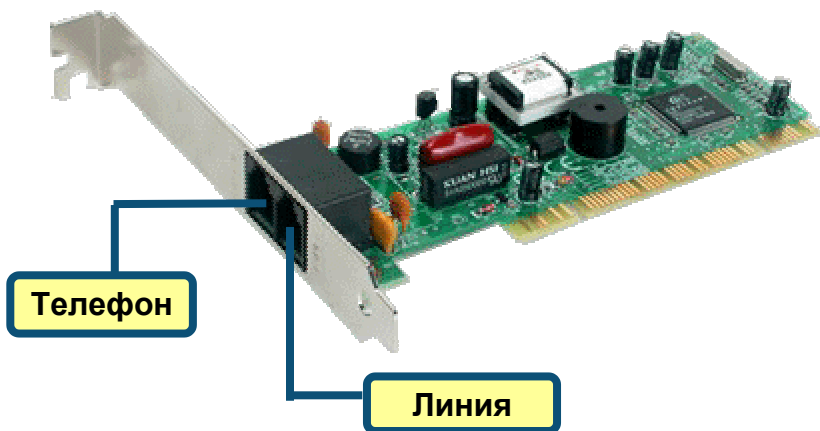
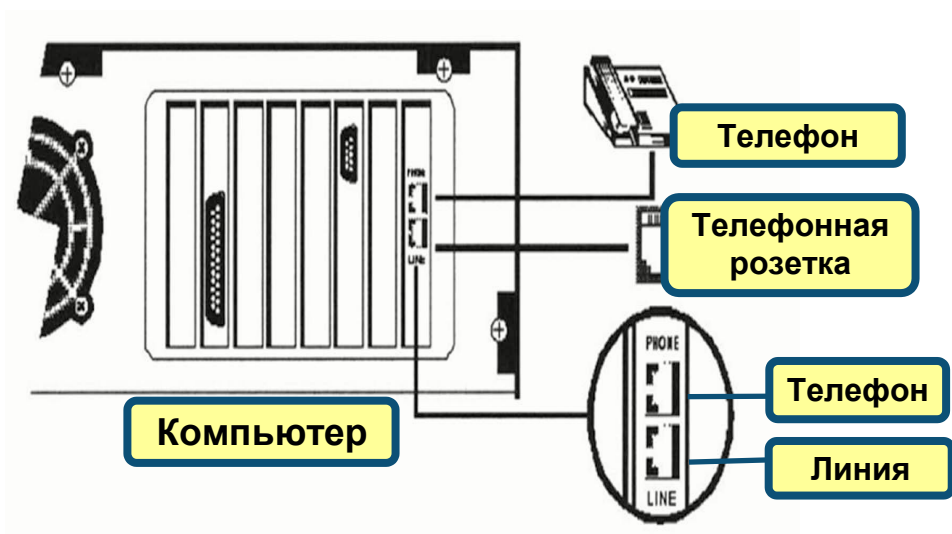
Использование источника питания с другими характеристиками и напряжением может повлечь выход из строя устройства и потерю гарантии

Если что-либо из перечисленного отсутствует, обратитесь к вашему поставщику.

1

Установка оборудования

Отключите телефонную линию и вставьте телефонный шнур в разъем, помеченный как LINE на задней панели устройства.



2

Установка драйверов

2.1 Windows 98/ME

После загрузки Windows обнаружит модем автоматически, нажмите **Отмена**. Затем вставьте компакт-диск с драйверами



Затем система автоматически установит драйвера.

Нажмите **Close** для выхода



2.1 Windows 98/ME (продолжение)

Выберите **Пуск**
Настройки \ **Панель**
Управления. Затем
дважды кликните на
значке **Модемы**.

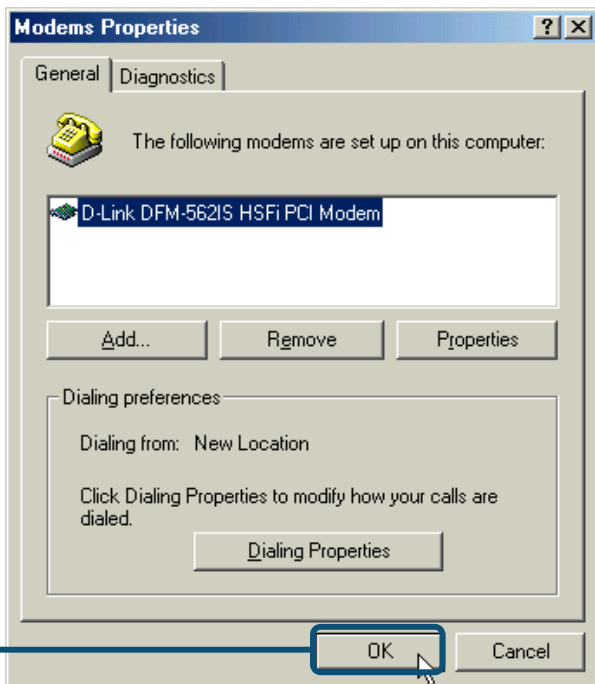
Нажмите
Modems



Проверьте модель
установленного модема
D-Link DFM-562IS HSF i PCI
Modem.

Если установка завершена
корректно, нажмите **OK** для
выхода.

Нажмите **OK**



2.2 Windows 2K

После загрузки Windows обнаружит модем автоматически, нажмите **Отмена**. Затем вставьте компакт-диск с драйверами

Нажмите **Install Drivers**

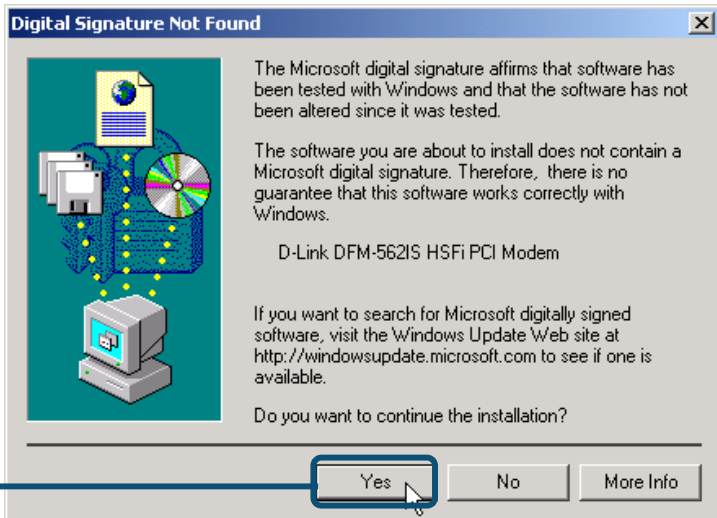


Нажмите **Yes** и игнорируйте сообщение

Нажмите **Yes**



Нажмите **Yes** и игнорируйте сообщение



Нажмите **Yes**

Затем система автоматически установит модем.

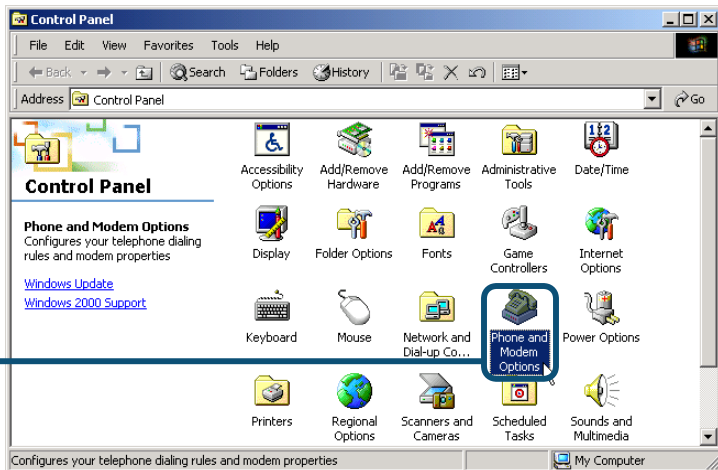
Нажмите **Close** для выхода



Нажмите **CLOSE**

2.2 Windows 2K(продолжение)

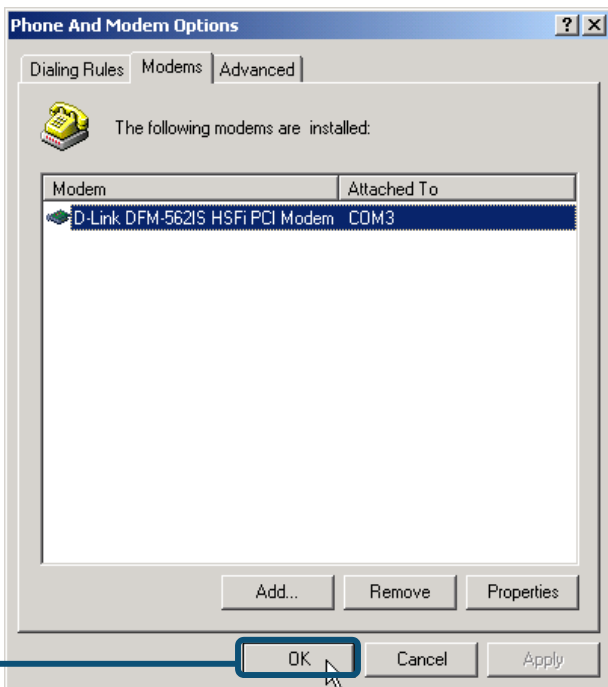
Выберите **Пуск\Настройки\ Панель Управления**. Затем дважды кликните на значке **Телефон и Модем**.



Нажмите **Phone and Modem Options**

Проверьте модель установленного модема **D-Link DFM-562E External Modem**.

Если установка завершена корректно, нажмите **OK** для выхода



Нажмите **OK**

2.3 Windows XP



Нажмите
Install Drivers

Software Installation



The software you are installing has not passed Windows Logo testing to verify its compatibility with Windows XP. ([Tell me why this testing is important.](#))

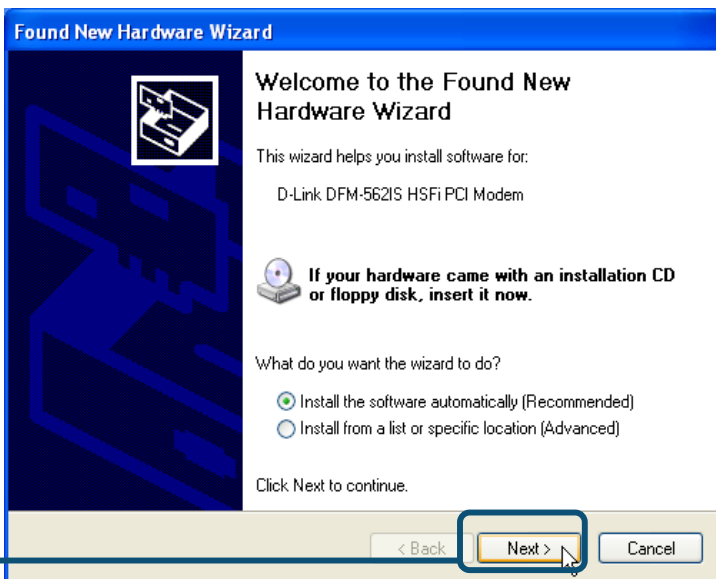
Continuing your installation of this software may impair or destabilize the correct operation of your system either immediately or in the future. Microsoft strongly recommends that you stop this installation now and contact the software vendor for software that has passed Windows Logo testing.

Нажмите
Continue

Continue Anyway

STOP Installation

Выберите **Установить драйвера автоматически [Рекомендуется]** затем нажмите **Далее** для поиска драйверов.



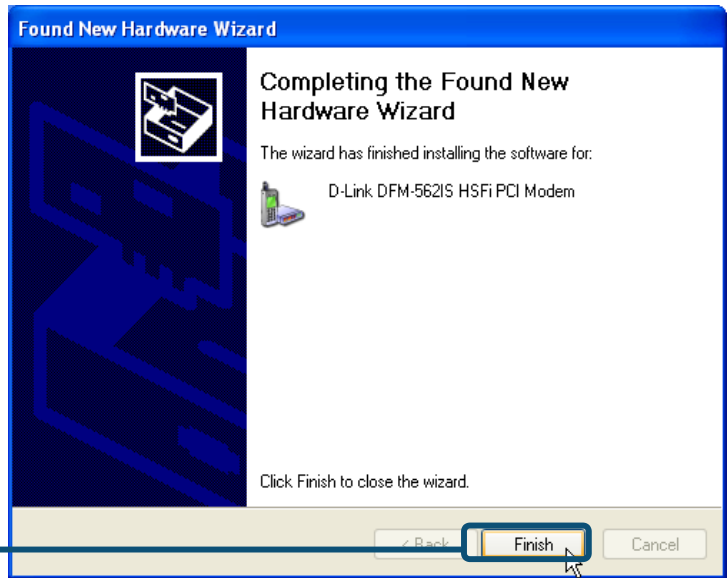
Нажмите **Next**

Нажмите **Continue Anyway** для пропуска предупреждающего сообщения.



Нажмите **Continue Anyway**

Установка
завершена



Нажмите **Finish**

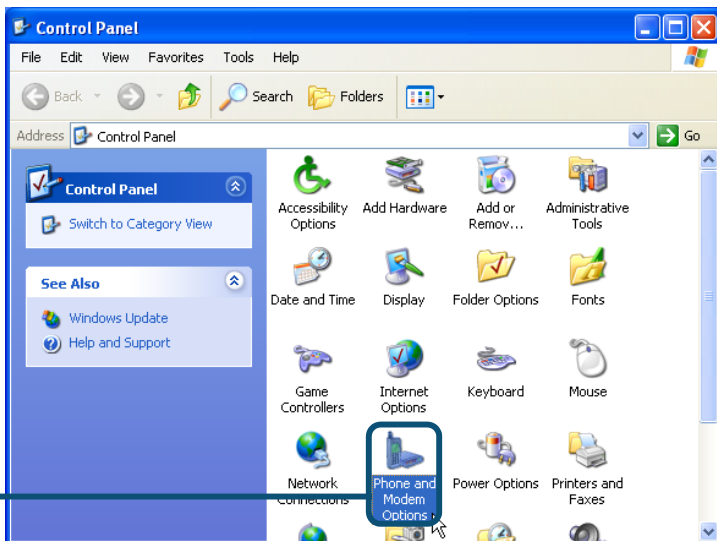
Нажмите **Close** для
выхода



Нажмите **CLOSE**

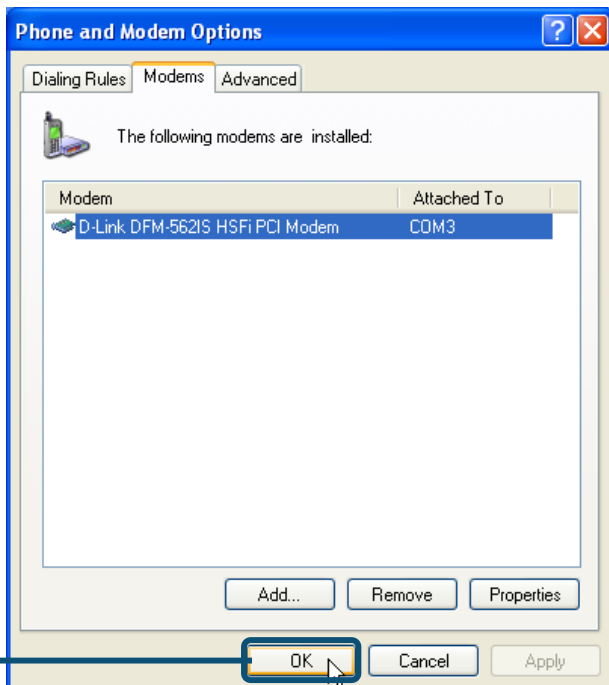
2.3 Windows XP(продолжение)

Выберите **Пуск**
Настройки | **Панель**
Управления. Затем
дважды кликните на
значке **Телефон и**
Модем.



Проверьте модель
установленного модема
D-Link DFM-562IS
HSFi PCI Modem.

Если установка
завершена корректно,
нажмите **OK** для
выхода.



Техническая поддержка

Вы можете найти последнюю версию программного обеспечения и документацию по продуктам на сайте **D-Link**

D-Link обеспечивает бесплатную техническую поддержку клиентов в течение гарантийного срока изделия.

Клиенты могут связаться со службой технической поддержки **D-Link** через наш web-сайт, или по телефону.

Телефоны службы технической поддержки D-Link:
+7 (095) 744 00 99

Техническая Поддержка D-Link через Internet:
support@dlink.ru

D-Link®
Building Networks for People