

10.90.90.90 (admin/admin)

DGS-3120-24TC - Microsoft Internet Explorer provided by D-Link Australia

http://10.90.90.90/www/main.html

D-Link Building Networks for People

System Configuration

- System Information Settings
- Port Configuration
- PoE
- Serial Port Settings
- Warning Temperature Settings
- System Log Configuration
- Time Range Settings
- Time Settings
- User Accounts Settings
- Command Logging Settings
- Stacking
- Management
- L2 Features
- L3 Features
- QoS
- ACL
- Security
- Network Application
- OAM
- Monitoring

Device Information

Device Type	DGS-3120-24TC Gigabit Ethernet Switch	MAC Address	1C-AF-F7-30-C5-9A
System Name		IP Address	10.90.90.90 (Static)
System Location		Mask	255.0.0.0
System Contact		Gateway	0.0.0.0
Boot PROM Version	Build 1.00.007	Management VLAN	default
Firmware Version	Build 1.00.026	Login Timeout (min)	10
Hardware Version	A1	System Time	13/09/2010 14:21:36 (System Clock)
Serial Number	P4V51A8000...		

Device Status and Quick Configurations

SNTP	Disabled	Jumbo Frame	Disabled
Spanning Tree	Disabled	MLD Snooping	Disabled
SNMP	Disabled	IGMP Snooping	Disabled
Safeguard Engine	Disabled	MAC Notification	Disabled
System Log	Disabled	802.1X	Disabled
SSL	Disabled	SSH	Disabled
GVRP	Disabled	Port Mirror	Disabled
Password Encryption	Disabled	Single IP Management	Disabled
Telnet	Enabled (TCP 23)	CLI Paging	Enabled
Web	Enabled (TCP 80)	HOL Blocking Prevention	Enabled
VLAN Trunk	Disabled		

Stacking Status

Done

Trusted sites | Protected Mode: Off

100%

DGS-3120-24TC - Microsoft Internet Explorer provided by D-Link Australia

http://10.90.90.90/www/main.html

D-Link Building Networks for People

Refresh Interval: 10 secs

System Up Time: 00 Days 00:07:21 Logged in as Administrator, Anonymous - 10.90.90.8 Logout

Save Configuration / Log

- System Configuration
  - System Information Settings
  - Port Configuration
  - PoE
  - Serial Port Settings
  - Warning Temperature Settings
  - System Log Configuration
  - Time Range Settings
  - Time Settings
  - User Accounts Settings
  - Command Logging Settings
  - Stacking
- Management
  - L2 Features
  - L3 Features
  - QoS
  - ACL
  - Security
  - Network Application
  - OAM
  - Monitoring

Stack ID: 1

### Device Information

Device Type	DGS-3120-24TC Gigabit Ethernet Switch	MAC Address	1C-AF-F7-30-C5-9A
System Name		IP Address	10.90.90.90 (Static)
System Location		Mask	255.0.0.0
System Contact		Gateway	0.0.0.0
Boot PROM Version	Build 1.00.007	Management VLAN	default
Firmware Version	Build 1.00.026	Login Timeout (min)	10
Hardware Version	A1	System Time	13/09/2010 14:21:36 (System Clock)
Serial Number	P4V51A8000...		

### Device Status and Quick Configurations

SNTP	Disabled	Jumbo Frame	Disabled
Spanning Tree	Disabled	MLD Snooping	Disabled
SNMP	Disabled	IGMP Snooping	Disabled
Safeguard Engine	Disabled	MAC Notification	Disabled
System Log	Disabled	802.1X	Disabled
SSL	Disabled	SSH	Disabled
GVRP	Disabled	Port Mirror	Disabled
Password Encryption	Disabled	Single IP Management	Disabled
Telnet	Enabled (TCP 23)	CLI Paging	Enabled
Web	Enabled (TCP 80)	HOL Blocking Prevention	Enabled
VLAN Trunk	Disabled		

Stacking Status: [Empty]

Save

Trusted sites | Protected Mode: Off

DGS-3120-24TC - Microsoft Internet Explorer provided by D-Link Australia

http://10.90.90.90/www/main.html

D-Link Building Networks for People

Refresh Interval: 10 secs

System Up Time: 00 Days 00:07:31 Logged in as Administrator, Anonymous - 10.90.90.8 Logout

Save

- DGS-3120
  - Stacking Information
  - System
    - Download Firmware
    - Upload Firmware
    - Download Configuration
    - Upload Configuration
    - Upload Log File
    - Reset
    - Reboot System
  - User Accounts Settings
  - Command Logging Settings
  - Stacking
- Management
  - L2 Features
  - L3 Features
  - QoS
  - ACL
  - Security
  - Network Application
  - OAM
  - Monitoring

Stack ID: 1

### Device Information

Device Type	DGS-3120-24TC Gigabit Ethernet Switch	MAC Address	1C-AF-F7-30-C5-9A
System Name		IP Address	10.90.90.90 (Static)
System Location		Mask	255.0.0.0
System Contact		Gateway	0.0.0.0
Boot PROM Version	Build 1.00.007	Management VLAN	default
Firmware Version	Build 1.00.026	Login Timeout (min)	10
Hardware Version	A1	System Time	13/09/2010 14:21:36 (System Clock)
Serial Number	P4V51A8000...		

### Device Status and Quick Configurations

SNTP	Disabled	Jumbo Frame	Disabled
Spanning Tree	Disabled	MLD Snooping	Disabled
SNMP	Disabled	IGMP Snooping	Disabled
Safeguard Engine	Disabled	MAC Notification	Disabled
System Log	Disabled	802.1X	Disabled
SSL	Disabled	SSH	Disabled
GVRP	Disabled	Port Mirror	Disabled
Password Encryption	Disabled	Single IP Management	Disabled
Telnet	Enabled (TCP 23)	CLI Paging	Enabled
Web	Enabled (TCP 80)	HOL Blocking Prevention	Enabled
VLAN Trunk	Disabled		

Stacking Status: [Empty]

Tools

Trusted sites | Protected Mode: Off

DGS-3120-24TC - Microsoft Internet Explorer provided by D-Link Australia

http://10.90.90.90/www/main.html

D-Link Building Networks for People

System Information Settings

Unit ID: 1  
 MAC Address: 1C-AF-F7-30-C5-9A  
 Firmware Version: Build 1.00.026  
 Hardware Version: A1

System Name:   
 System Location:   
 System Contact:

Apply

System Up Time: 00 Days 00:07:52 | Logged in as Administrator, Anonymous - 10.90.90.8 | Logout

Stacking Status: Done

Trusted sites | Protected Mode: Off | 100%

DGS-3120-24TC - Microsoft Internet Explorer provided by D-Link Australia

http://10.90.90.90/www/main.html

D-Link Building Networks for People

Port Settings

Unit	From Port	To Port	State	Speed/Duplex	Flow Control	Address Learning	MDIX	Medium Type
1	01	01	Enabled	Auto	Disabled	Enabled	Auto	Copper

Unit 1 Settings

Port	State	Speed/Duplex	Connection	MDIX	Address Learning
01	Enabled	Auto	Link Down	Auto	Enabled
02	Enabled	Auto	Link Down	Auto	Enabled
03	Enabled	Auto	1000M/Full/None	Auto	Enabled
04	Enabled	Auto	Link Down	Auto	Enabled
05	Enabled	Auto	Link Down	Auto	Enabled
06	Enabled	Auto	Link Down	Auto	Enabled
07	Enabled	Auto	Link Down	Auto	Enabled
08	Enabled	Auto	Link Down	Auto	Enabled
09	Enabled	Auto	Link Down	Auto	Enabled
10	Enabled	Auto	Link Down	Auto	Enabled
11	Enabled	Auto	Link Down	Auto	Enabled
12	Enabled	Auto	Link Down	Auto	Enabled

Apply | Refresh

System Up Time: 00 Days 00:08:12 | Logged in as Administrator, Anonymous - 10.90.90.8 | Logout

Stacking Status: Done

Trusted sites | Protected Mode: Off | 100%

DGS-3120-24TC - Microsoft Internet Explorer provided by D-Link Australia  
http://10.90.90.90/www/main.html

**D-Link**  
Building Networks for People

Refresh Interval: 10 secs  
Apply

System Up Time: 00 Days 00:08:24 | Logged in as Administrator, Anonymous - 10.90.90.8 | Logout

### Port Description Settings

Unit	From Port	To Port	Medium Type	Description
1	01	01	Copper	

Unit 1 Description

Port	Description
01	
02	
03	
04	
05	
06	
07	
08	
09	
10	
11	
12	

Done | Trusted sites | Protected Mode: Off | 100%

DGS-3120-24TC - Microsoft Internet Explorer provided by D-Link Australia  
http://10.90.90.90/www/main.html

Refresh Interval: 10 secs  
Apply

System Up Time: 00 Days 00:08:55 | Logged in as Administrator, Anonymous - 10.90.90.8 | Logout

### Port Error Disabled

Port	Port State	Connection Status	Reason
------	------------	-------------------	--------

Done | Trusted sites | Protected Mode: Off | 100%

DGS-3120-24TC - Microsoft Internet Explorer provided by D-Link Australia  
http://10.90.90.90/www/main.html

Refresh Interval: 10 secs  
Apply

System Up Time: 00 Days 00:09:05 | Logged in as Administrator, Anonymous - 10.90.90.8 | Logout

### Jumbo Frame Settings

Jumbo Frame  Enabled  Disabled

Current Status: The maximum size of frame is 1536 bytes.

Apply

Done | Trusted sites | Protected Mode: Off | 100%

DGS-3120-24TC - Microsoft Internet Explorer provided by D-Link Australia

http://10.90.90.90/www/main.html

D-Link Building Networks for People

Refresh Interval: 10 secs

System Up Time: 00 Days 00:09:46 Logged in as Administrator, Anonymous - 10.90.90.8 Logout

### PoE System Settings

Units (1, 3-5)  All Power Limit (1-370) Watts Power Disconnect Method Legacy PD

Deny Next Port  
Deny Low Priority Port

#### PoE System Information

Unit	Power Limit (Watts)	Power Consumption (Watts)	Power Remained (Watts)	Power Disconnection Method	Legacy PD
Note: If Power Disconnection Method is set to deny next port, then the system can not utilize out of its maximum power capacity. The maximum unused watt is 19W.					

Done Trusted sites | Protected Mode: Off

DGS-3120-24TC - Microsoft Internet Explorer provided by D-Link Australia

http://10.90.90.90/www/main.html

D-Link Building Networks for People

Refresh Interval: 10 secs

System Up Time: 00 Days 00:10:17 Logged in as Administrator, Anonymous - 10.90.90.8 Logout

### PoE Port Settings

Unit	From Port	To Port	State	Time Range	Priority	Power Limit
1	01	01	Enabled		Critical	Class 0

Class 0  
Class 1  
Class 2  
Class 3  
User Define

#### Unit 1 PoE Port Information

Port	State	Time Range	Priority	Power Limit (mW)	Class	Power (mW)	Voltage (Decivolt)	Current (mA)	Status

Done Trusted sites | Protected Mode: Off

DGS-3120-24TC - Microsoft Internet Explorer provided by D-Link Australia

http://10.90.90.90/www/main.html

D-Link Building Networks for People

Refresh Interval: 10 secs

System Up Time: 00 Days 00:10:28 Logged in as Administrator, Anonymous - 10.90.90.8 Logout

### Serial Port Settings

Baud Rate: 115200  
Auto Logout: 10 minutes  
Data Bits: 8  
Parity Bits: None  
Stop Bits: 1

Done Trusted sites | Protected Mode: Off

DGS-3120-24TC - Microsoft Internet Explorer provided by D-Link Australia

http://10.90.90.90/www/main.html

D-Link Building Networks for People

Refresh Interval: 10 secs

System Up Time: 00 Days 00:10:38 Logged in as Administrator, Anonymous - 10.90.90.8

### Warning Temperature Settings

Set Warning Temperature

Traps State: Disabled

Log State: Disabled

High Threshold (-500~500):  celsius

Low Threshold (-500~500):  celsius

Apply

DGS-3120-24TC - Microsoft Internet Explorer provided by D-Link Australia

http://10.90.90.90/www/main.html

D-Link Building Networks for People

Refresh Interval: 10 secs

System Up Time: 00 Days 00:10:58 Logged in as Administrator, Anonymous - 10.90.90.8

### System Log Settings

System Log:  Enabled  Disabled

Apply

System Log Save Mode Settings

Save Mode: On Demand

min (1-65535)

Apply

DGS-3120-24TC - Microsoft Internet Explorer provided by D-Link Australia

http://10.90.90.90/www/main.html

D-Link Building Networks for People

Refresh Interval: 10 secs

System Up Time: 00 Days 00:11:09 Logged in as Administrator, Anonymous - 10.90.90.8

### System Log Server Settings

Add System Log Server

Server ID: 1 Severity: Emergency (0)

Server IPv4 Address:  Facility: Local 0

UDP Port (514 or 6000-65535): 514 Status: Disabled

Apply Delete All

System Log Server List

Server ID	Server IP Address	Severity	Facility	UDP Port	Status
1		Emergency (0)	Local 0	514	Disabled

DGS-3120-24TC - Microsoft Internet Explorer provided by D-Link Australia

http://10.90.90.90/www/main.html

D-Link Building Networks for People

Refresh Interval: 10 secs

System Up Time: 00 Days 00:11:30 Logged in as Administrator, Anonymous - 10.90.90.8

### System Log

Log Type: Severity Emergency Alert Critical Error Warning Notice Informational Debug All

Module List: (Log Software Module: MSTP, ERROR\_LOG)

Find Clear Log Clear Attack Log

Total Entries: 6

Index	Time	Level	Log Text
6	2010-09-13 14:21:26	INFO(6)	Successful login through Web (Username: Anonymous, IP: 10.90.90.8)
5	2010-09-13 14:19:53	INFO(6)	Port 1:3 link up, 1000Mbps FULL duplex
4	2010-09-13 14:19:50	INFO(6)	Port 1:1 link down
3	2010-09-13 14:19:46	INFO(6)	Port 1:1 link up, 1000Mbps FULL duplex
2	2010-09-13 14:16:42	INFO(6)	Stacking topology is Chain. Master (Unit 1, MAC: 1C-AF-F7-30-C5-9A).

1/2 1 2 >> Go

DGS-3120-24TC - Microsoft Internet Explorer provided by D-Link Australia

http://10.90.90.90/www/main.html

D-Link Building Networks for People

Refresh Interval: 10 secs

System Up Time: 00 Days 00:11:40 Logged in as Administrator, Anonymous - 10.90.90.8

### System Log & Trap Settings

System Log Source IP Interface Settings

Interface Name:

IPv4 Address:

Apply Clear

Trap Source IP Interface Settings

Interface Name:

IPv4 Address:

Apply Clear

DGS-3120-24TC - Microsoft Internet Explorer provided by D-Link Australia

http://10.90.90.90/www/main.html

D-Link Building Networks for People

Refresh Interval: 10 secs

System Up Time: 00 Days 00:11:52 Logged in as Administrator, Anonymous - 10.90.90.8

### System Severity Settings

System Severity: Trap

Severity Level: Emergency (0)

Apply

System Severity Table

System Severity	Trap	Log
Emergency (0)		
Alert (1)		
Critical (2)		
Error (3)		
Warning (4)	(6)	(6)
Notice (5)	(6)	(6)
Informational (6)	(6)	(6)
Debug (7)		

DGS-3120-24TC - Microsoft Internet Explorer provided by D-Link Australia

http://10.90.90.90/www/main.html

D-Link Building Networks for People

Refresh Interval: 10 secs

System Up Time: 00 Days 00:12:24 Logged in as Administrator, Anonymous - 10.90.90.8

Stack ID: 1

### Time Range Settings

Range Name:  (Max: 32 Characters)

Hours (HH MM SS): Start Time 00 00 00 End Time 00 00 00

Weekdays: Mon  Tue  Wed  Thu  Fri  Sat  Sun

Total Entries: 0

Range Name	Days	Start Time	End Time
Total Entries: 0			

Done

Trusted sites | Protected Mode: Off

DGS-3120-24TC - Microsoft Internet Explorer provided by D-Link Australia

http://10.90.90.90/www/main.html

D-Link Building Networks for People

Refresh Interval: 10 secs

System Up Time: 00 Days 00:12:35 Logged in as Administrator, Anonymous - 10.90.90.8

Stack ID: 1

### Time Settings

Set Current Time

Date (DD / MM / YYYY):

Time (HH: MM: SS):

Done

Trusted sites | Protected Mode: Off

DGS-3120-24TC - Microsoft Internet Explorer provided by D-Link Australia

http://10.90.90.90/www/main.html

D-Link Building Networks for People

Refresh Interval: 10 secs

System Up Time: 00 Days 00:12:55 Logged in as Administrator, Anonymous - 10.90.90.8

Stack ID: 1

### User Accounts Settings

Add User Accounts

User Name:  Password:

Access Right:  Confirm Password:

Note: Password / User Name must be more than 16 characters.

Total Entries: 0

User Name	Access Right	Old Password	New Password	Confirm Password	Encryption
Total Entries: 0					

Done

Trusted sites | Protected Mode: Off



DGS-3120-24TC - Microsoft Internet Explorer provided by D-Link Australia

http://10.90.90.90/www/main.html

D-Link Building Networks for People

Refresh Interval: 10 secs

System Up Time: 00 Days 00:13:06 Logged in as Administrator, Anonymous - 10.90.90.8 Logout

### Command Logging Settings

Command Logging State:  Enabled  Disabled

Apply

Done

Trusted sites | Protected Mode: Off

DGS-3120-24TC - Microsoft Internet Explorer provided by D-Link Australia

http://10.90.90.90/www/main.html

D-Link Building Networks for People

Refresh Interval: 10 secs

System Up Time: 00 Days 00:13:16 Logged in as Administrator, Anonymous - 10.90.90.8 Logout

### Stacking Device Table

Box ID	Box Type	HW Version	Serial Number
1	DGS-3120-24TC	A1	P4V5148000001

Done

Trusted sites | Protected Mode: Off

DGS-3120-24TC - Microsoft Internet Explorer provided by D-Link Australia

http://10.90.90.90/www/main.html

D-Link Building Networks for People

Refresh Interval: 10 secs

System Up Time: 00 Days 00:13:27 Logged in as Administrator, Anonymous - 10.90.90.8 Logout

### Stacking Mode Settings

Stacking Mode:  Enabled  Disabled

Force Master Role:  Enabled  Disabled

Box ID Settings

Current Box ID: 1 New Box ID: Auto Priority (1-63):

Apply

Done

Trusted sites | Protected Mode: Off

DGS-3120-24TC - Microsoft Internet Explorer provided by D-Link Australia

http://10.90.90.90/www/main.html

D-Link Building Networks for People

Refresh Interval: 10 secs

System Up Time: 00 Days 00:13:58 | Logged in as Administrator, Anonymous - 10.90.90.8 | Logout

### Static ARP Settings

Global Settings

ARP Aging Time (0-65535):  min Apply

Add Static ARP Entry

IP Address:  MAC Address:  Apply

Delete All

Total Entries: 3

Interface Name	IP Address	MAC Address	Type	Edit	Delete
System	10.0.0.0	FF-FF-FF-FF-FF-FF	Local/Broadcast	<a href="#">Edit</a>	<a href="#">Delete</a>
System	10.90.90.90	1C-AF-F7-30-C5-9A	Local	<a href="#">Edit</a>	<a href="#">Delete</a>
System	10.255.255.255	FF-FF-FF-FF-FF-FF	Local/Broadcast	<a href="#">Edit</a>	<a href="#">Delete</a>

Done Trusted sites | Protected Mode: Off 100%

DGS-3120-24TC - Microsoft Internet Explorer provided by D-Link Australia

http://10.90.90.90/www/main.html

D-Link Building Networks for People

Refresh Interval: 10 secs

System Up Time: 00 Days 00:14:08 | Logged in as Administrator, Anonymous - 10.90.90.8 | Logout

### ARP Table

Interface Name:  IP Address:  MAC Address:  Find

Show Static Clear All

Total Entries: 4

Interface Name	IP Address	MAC Address	Type
System	10.0.0.0	FF-FF-FF-FF-FF-FF	Local/Broadcast
System	10.90.90.8	00-1A-4B-69-DE-FF	Dynamic
System	10.90.90.90	1C-AF-F7-30-C5-9A	Local
System	10.255.255.255	FF-FF-FF-FF-FF-FF	Local/Broadcast

1/1 1 Go

Done Trusted sites | Protected Mode: Off 100%

DGS-3120-24TC - Microsoft Internet Explorer provided by D-Link Australia

http://10.90.90.90/www/main.html

D-Link Building Networks for People

Refresh Interval: 10 secs

System Up Time: 00 Days 00:14:18 | Logged in as Administrator, Anonymous - 10.90.90.8 | Logout

### Gratuitous ARP Global Settings

Send On IP Interface Status Up:  Enabled  Disabled

Send On Duplicate IP Detected:  Enabled  Disabled

Gratuitous ARP Learning:  Enabled  Disabled

Apply

Done Trusted sites | Protected Mode: Off 100%

DGS-3120-24TC - Microsoft Internet Explorer provided by D-Link Australia

http://10.90.90.90/www/main.html

D-Link Building Networks for People

Refresh Interval: 10 secs

System Up Time: 00 Days 00:14:29 Logged in as Administrator, Anonymous - 10.90.90.8 Logout

**Gratuitous ARP Settings**

Gratuitous ARP Trap/Log

Trap: Disabled Log: Disabled Interface Name:   All

Gratuitous ARP Periodical Send Interval

Interface Name:  Interval Time (0-65535):

Total Entries: 1

Interface Name	Gratuitous ARP Trap	Gratuitous ARP Log	Gratuitous ARP Periodical Send Interval
System	Disabled	Enabled	0

Done Trusted sites | Protected Mode: Off 100%

DGS-3120-24TC - Microsoft Internet Explorer provided by D-Link Australia

http://10.90.90.90/www/main.html

D-Link Building Networks for People

Refresh Interval: 10 secs

System Up Time: 00 Days 00:14:40 Logged in as Administrator, Anonymous - 10.90.90.8 Logout

**System IP Address Settings**

Static  DHCP  BOOTP

Interface Name:

Management VLAN Name:

Interface Admin State:

IP Address:

Subnet Mask:

Gateway:

Done Trusted sites | Protected Mode: Off 100%

DGS-3120-24TC - Microsoft Internet Explorer provided by D-Link Australia

http://10.90.90.90/www/main.html

D-Link Building Networks for People

Refresh Interval: 10 secs

System Up Time: 00 Days 00:14:50 | Logged in as Administrator, Anonymous - 10.90.90.8 | Logout

### Interface Settings

Interface Name:

Total Entries: 1

Interface Name	VLAN Name	Admin.State	Secondary	Link State
System	default	Enabled	No	Link Up

IPv4 Edit | IPv6 Edit | Delete

Stacking Status: Done

Trusted sites | Protected Mode: Off

DGS-3120-24TC - Microsoft Internet Explorer provided by D-Link Australia

http://10.90.90.90/www/main.html

D-Link Building Networks for People

Refresh Interval: 10 secs

System Up Time: 00 Days 00:15:11 | Logged in as Administrator, Anonymous - 10.90.90.8 | Logout

### Management Settings

CLI Paging Settings

CLI Paging State:  Enabled  Disabled

DHCP Auto Configuration Settings

DHCP Auto Configuration State:  Enabled  Disabled

Power Saving Settings

Power Saving State:  Enabled  Disabled

Length Detection State:  Enabled  Disabled

Password Encryption Settings

Password Encryption State:  Enabled  Disabled

Apply

Stacking Status: Done

Trusted sites | Protected Mode: Off

DGS-3120-24TC - Microsoft Internet Explorer provided by D-Link Australia

http://10.90.90.90/www/main.html

D-Link Building Networks for People

Refresh Interval: 10 secs

System Up Time: 00 Days 00:15:22 | Logged in as Administrator, Anonymous - 10.90.90.8 | Logout

### Session Table

Refresh

ID	Live Time	From	Level	Name
8	00:04:41.960	Serial Port	1	Anonymous

Stacking Status: Done

Trusted sites | Protected Mode: Off

DGS-3120-24TC - Microsoft Internet Explorer provided by D-Link Australia

http://10.90.90.90/www/main.html

D-Link Building Networks for People

Refresh Interval: 10 secs

System Up Time: 00 Days 00:10:25 | Logged in as Administrator, Anonymous - 10.90.90.8 | Logout

### Single IP Settings

SIM State:

Role State:

Group Name:

Discovery Interval (30 - 90):  sec

Hold Time Count (100-255):  sec

Apply

Stack ID: 1

Done

Trusted sites | Protected Mode: Off

DGS-3120-24TC - Microsoft Internet Explorer provided by D-Link Australia

http://10.90.90.90/www/main.html

D-Link Building Networks for People

Refresh Interval: 10 secs

System Up Time: 00 Days 00:10:46 | Logged in as Administrator, Anonymous - 10.90.90.8 | Logout

### SNMP Global Settings

SNMP Global Settings

SNMP State:  Enabled  Disabled

Apply

Stack ID: 1

Done

Trusted sites | Protected Mode: Off

DGS-3120-24TC - Microsoft Internet Explorer provided by D-Link Australia

http://10.90.90.90/www/main.html

D-Link Building Networks for People

Refresh Interval: 10 secs

System Up Time: 00 Days 00:10:57 | Logged in as Administrator, Anonymous - 10.90.90.8 | Logout

### SNMP Traps Settings

SNMP Traps:  Enabled  Disabled

SNMP Authentication Trap:  Enabled  Disabled

Linkchange Traps:  Enabled  Disabled

Coldstart Traps:  Enabled  Disabled

Warmstart Traps:  Enabled  Disabled

Apply

Stack ID: 1

Done

Trusted sites | Protected Mode: Off

DGS-3120-24TC - Microsoft Internet Explorer provided by D-Link Australia

http://10.90.90.90/www/main.html

D-Link Building Networks for People

Refresh Interval: 10 secs

System Up Time: 00 Days 00:11:18 | Logged in as Administrator, Anonymous - 10.90.90.8 | Logout

### SNMP Linkchange Traps Settings

Unit: 1 | From Port: 01 | To Port: 01 | State: Disabled

Linkchange Traps: Enabled

#### Unit 1 Settings

Port	State
1	Enabled
2	Enabled
3	Enabled
4	Enabled
5	Enabled
6	Enabled
7	Enabled
8	Enabled
9	Enabled
10	Enabled
11	Enabled
12	Enabled

Done | Trusted sites | Protected Mode: Off | 100%

DGS-3120-24TC - Microsoft Internet Explorer provided by D-Link Australia

http://10.90.90.90/www/main.html

D-Link Building Networks for People

Refresh Interval: 10 secs

System Up Time: 00 Days 00:11:18 | Logged in as Administrator, Anonymous - 10.90.90.8 | Logout

### SNMP View Table Settings

View Name:

Subtree OID:

View Type: Included

Total Entries: 8

View Name	Subtree	View Type	
restricted	1.3.6.1.2.1.1	Included	Delete
restricted	1.3.6.1.2.1.11	Included	Delete
restricted	1.3.6.1.6.3.10.2.1	Included	Delete
restricted	1.3.6.1.6.3.11.2.1	Included	Delete
restricted	1.3.6.1.6.3.15.1.1	Included	Delete
CommunityView	1	Included	Delete
CommunityView	1.3.6.1.6.3	Excluded	Delete
CommunityView	1.3.6.1.6.3.1	Included	Delete

Done | Trusted sites | Protected Mode: Off | 100%

DGS-3120-24TC - Microsoft Internet Explorer provided by D-Link Australia

http://10.90.90.90/www/main.html

D-Link Building Networks for People

Refresh Interval: 10 secs

System Up Time: 00 Days 00:11:28 | Logged in as Administrator, Anonymous - 10.90.90.8 | Logout

### SNMP Community Table Settings

**Add Community**

Community Name:

View Name:

Access Right:

Apply

**Total Entries: 2**

Community Name	View Name	Access Right	
private	CommunityView	read_write	Delete
public	CommunityView	read_only	Delete

Done

DGS-3120-24TC - Microsoft Internet Explorer provided by D-Link Australia

http://10.90.90.90/www/main.html

D-Link Building Networks for People

Refresh Interval: 10 secs

System Up Time: 00 Days 00:11:59 | Logged in as Administrator, Anonymous - 10.90.90.8 | Logout

### SNMP Group Table Settings

**Add Group**

Group Name:

Read View Name:

Write View Name:

Notify View Name:

User-based Security Model:

Security Level:

Apply

**Total Entries: 9**

Group Name	Read View Name	Write View Name	Notify View Name	User-based Security Model	Security Level	
public	CommunityV...		CommunityV...	SNMPv1	NoAuthNoPriv	Delete
public	CommunityV...		CommunityV...	SNMPv2	NoAuthNoPriv	Delete
initial	restricted		restricted	SNMPv3	NoAuthNoPriv	Delete
private	CommunityV...	CommunityV...	CommunityV...	SNMPv1	NoAuthNoPriv	Delete
private	CommunityV...	CommunityV...	CommunityV...	SNMPv2	NoAuthNoPriv	Delete
ReadGroup	CommunityV...		CommunityV...	SNMPv1	NoAuthNoPriv	Delete

Done

DGS-3120-24TC - Microsoft Internet Explorer provided by D-Link Australia

http://10.90.90.90/www/main.html

D-Link Building Networks for People

Refresh Interval: 10 secs

System Up Time: 00 Days 00:12:09 | Logged in as Administrator, Anonymous - 10.90.90.8 | Logout

### SNMP Engine ID Settings

Engine ID:

Note: Engine ID length is 10-64. The accepted characters are from 0 to F.

Apply

Stacking Status: STACKING STATUS

Waiting for http://10.90.90.90/html/infobar.html... | Trusted sites | Protected Mode: Off | 100%

DGS-3120-24TC - Microsoft Internet Explorer provided by D-Link Australia

http://10.90.90.90/www/main.html

D-Link Building Networks for People

Refresh Interval: 10 secs

System Up Time: 00 Days 00:12:19 | Logged in as Administrator, Anonymous - 10.90.90.8 | Logout

### SNMP User Table Settings

Add User

User Name:  Group Name:

SNMP Version: V3 SNMP V3 Encryption: None

Auth-Protocol by Password: MD5 Password: None

Priv-Protocol by Password: None Password: Password

Auth-Protocol by Key: MD5 Key: Key

Priv-Protocol by Key: None Key: Key

Apply

Total Entries: 1

User Name	Group Name	SNMP Version	Auth-Protocol	Priv-Protocol
initial	initial	V3	None	None

Delete

Done | Trusted sites | Protected Mode: Off | 100%



DGS-3120-24TC - Microsoft Internet Explorer provided by D-Link Australia

http://10.90.90.90/www/main.html

D-Link Building Networks for People

Refresh Interval: 10 secs

System Up Time: 00 Days 00:12:41 | Logged in as Administrator, Anonymous - 10.90.90.8 | Logout

### SNMP Host Table Settings

Add Host Table

Host IP Address:

User-based Security Model: SNMPV3

Security Level: NoAuthNoPriv

Community String / SNMPV3 User Name: NoAuthNoPriv

Apply

Total Entries: 0

Host IP Address	User-based Security Model	Security Level	Community Name/SNMPV3 User Name

Stacking Status: Done

Trusted sites | Protected Mode: Off

DGS-3120-24TC - Microsoft Internet Explorer provided by D-Link Australia

http://10.90.90.90/www/main.html

D-Link Building Networks for People

Refresh Interval: 10 secs

System Up Time: 00 Days 00:12:51 | Logged in as Administrator, Anonymous - 10.90.90.8 | Logout

### RMON Settings

RMON Rising Alarm Trap:  Enabled  Disabled

RMON Falling Alarm Trap:  Enabled  Disabled

Apply

Stacking Status: Done

Trusted sites | Protected Mode: Off

DGS-3120-24TC - Microsoft Internet Explorer provided by D-Link Australia

http://10.90.90.90/www/main.html

D-Link Building Networks for People

Refresh Interval: 10 secs

System Up Time: 00 Days 00:13:02 Logged in as Administrator, Anonymous - 10.90.90.8

### Telnet Settings

Telnet State:  Enabled  Disabled

Port (1-65535):

Apply

Stacking Status: Done

Trusted sites | Protected Mode: Off

DGS-3120-24TC - Microsoft Internet Explorer provided by D-Link Australia

http://10.90.90.90/www/main.html

D-Link Building Networks for People

Refresh Interval: 10 secs

System Up Time: 00 Days 00:13:02 Logged in as Administrator, Anonymous - 10.90.90.8

### Web Settings

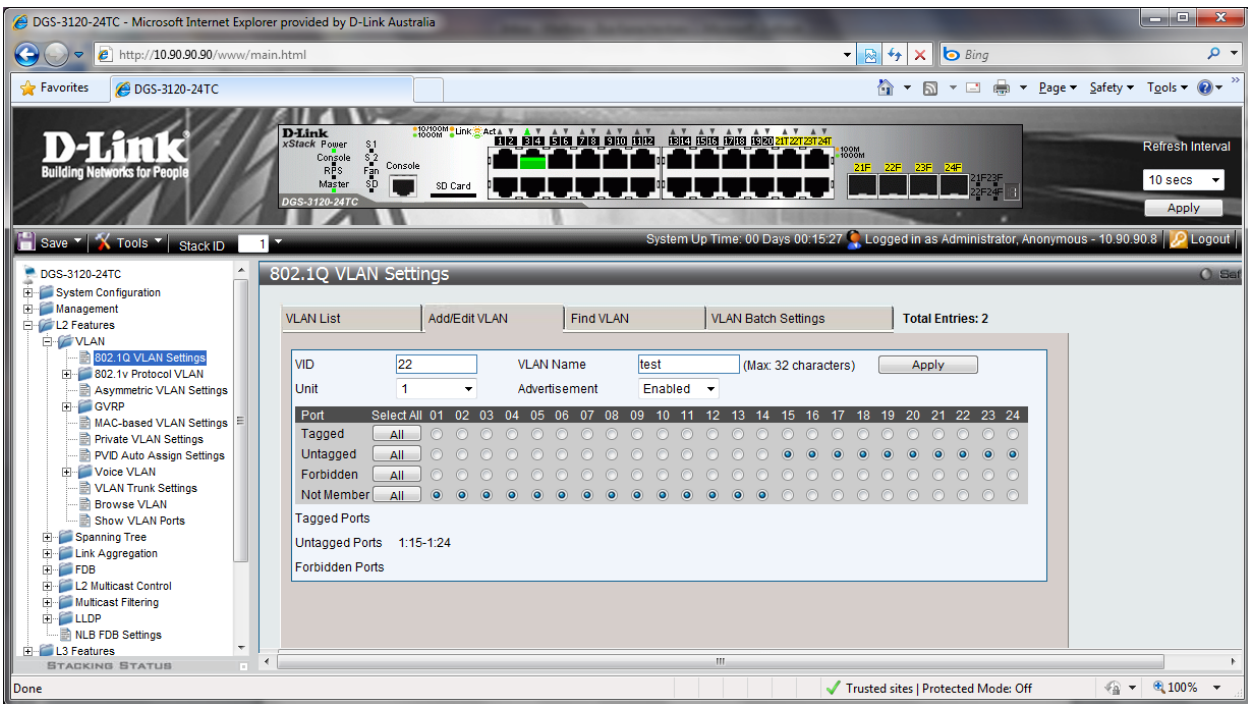
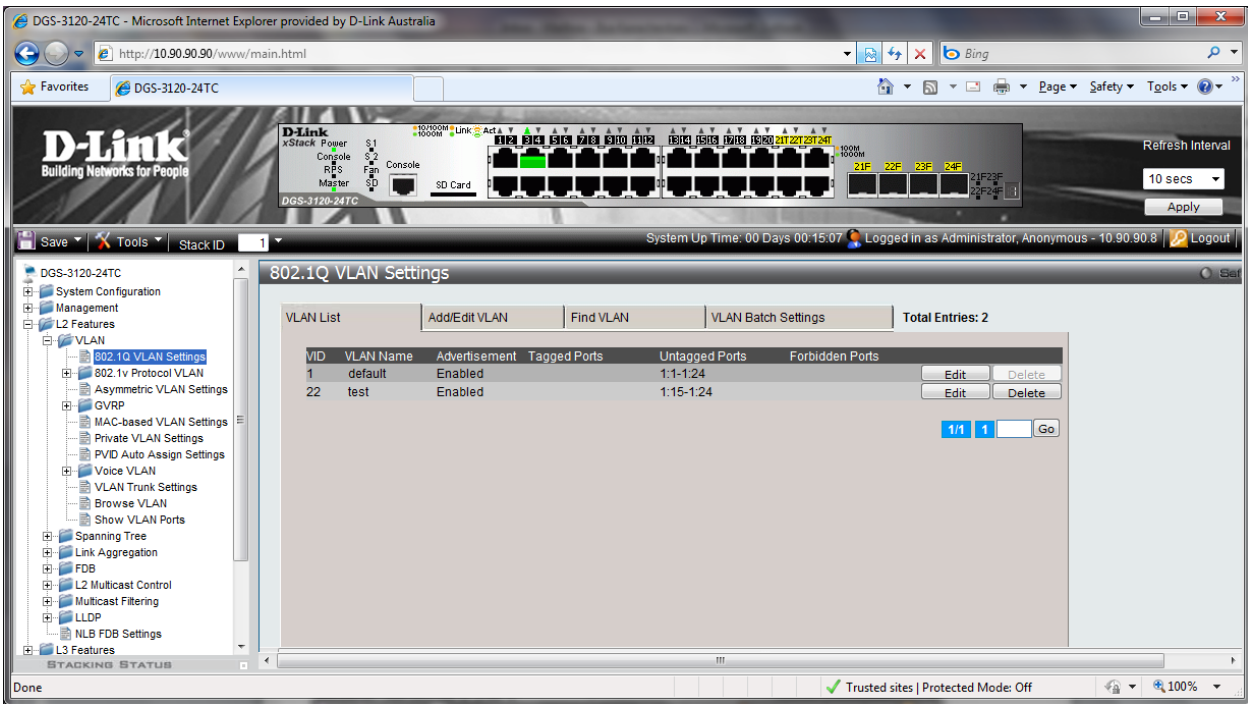
Web State:  Enabled  Disabled

Port (1-65535):

Apply

Stacking Status: Done

Trusted sites | Protected Mode: Off



With Asymmetric VLAN disabled still allows to overlap untagged ports.

DGS-3120-24TC - Microsoft Internet Explorer provided by D-Link Australia

http://10.90.90.90/www/main.html

D-Link Building Networks for People

Refresh Interval: 10 secs

System Up Time: 00 Days 00:15:48 | Logged in as Administrator, Anonymous - 10.90.90.8 | Logout

### 802.1Q VLAN Settings

VLAN List | Add/Edit VLAN | Find VLAN | VLAN Batch Settings | Total Entries: 1

VID  Find

Done

Trusted sites | Protected Mode: Off

100%

DGS-3120-24TC - Microsoft Internet Explorer provided by D-Link Australia

http://10.90.90.90/www/main.html

D-Link Building Networks for People

Refresh Interval: 10 secs

System Up Time: 00 Days 00:15:58 | Logged in as Administrator, Anonymous - 10.90.90.8 | Logout

### 802.1Q VLAN Settings

VLAN List | Add/Edit VLAN | Find VLAN | VLAN Batch Settings | Total Entries: 1

VID List (e.g.: 2-5)   Add  Delete  Configure

Advertisement Disabled

Port List (e.g.: 1:1-1:5)  Add Tagged

Apply

Done

Trusted sites | Protected Mode: Off

100%

DGS-3120-24TC - Microsoft Internet Explorer provided by D-Link Australia

http://10.90.90.90/www/main.html

D-Link Building Networks for People

Refresh Interval: 10 secs

System Up Time: 00 Days 00:16:40 | Logged in as Administrator, Anonymous - 10.90.90.8 | Logout

### 802.1v Protocol Group Settings

Add Protocol VLAN Group

Group ID (1-16):  Group Name:

Note: Name should be less than 33 characters.

Add Protocol for Protocol VLAN Group

Group ID  Group Name Protocol:  Protocol Value (0-FFFF):

Ethernet II  
Ethernet II  
IEEE802.3 SNAP  
IEEE802.3 LLC

Total Entries: 0

Group ID	Group Name	Frame Type	Protocol Value
Total Entries: 0			

Done Trusted sites | Protected Mode: Off 100%

DGS-3120-24TC - Microsoft Internet Explorer provided by D-Link Australia

http://10.90.90.90/www/main.html

D-Link Building Networks for People

Refresh Interval: 10 secs

System Up Time: 00 Days 00:17:00 | Logged in as Administrator, Anonymous - 10.90.90.8 | Logout

### 802.1v Protocol VLAN Settings

Add New Protocol VLAN

Group ID  Group Name  VID (1-4094)  802.1p Priority:  None

Port List (e.g.: 1:1-1:6, all)   All Ports

Protocol VLAN Table

Search Port List (e.g.: 1:1-1:6, all)

Total Entries: 0

Port	VID	VLAN Name	Group ID	802.1p Priority
Total Entries: 0				

Done Trusted sites | Protected Mode: Off 100%

DGS-3120-24TC - Microsoft Internet Explorer provided by D-Link Australia

http://10.90.90.90/www/main.html

D-Link Building Networks for People

Refresh Interval: 10 secs

System Up Time: 00 Days 00:17:11 | Logged in as Administrator, Anonymous - 10.90.90.8 | Logout

### Asymmetric VLAN Settings

Asymmetric VLAN State:  Enabled  Disabled

Apply

Done

Trusted sites | Protected Mode: Off

DGS-3120-24TC - Microsoft Internet Explorer provided by D-Link Australia

http://10.90.90.90/www/main.html

D-Link Building Networks for People

Refresh Interval: 10 secs

System Up Time: 00 Days 00:17:21 | Logged in as Administrator, Anonymous - 10.90.90.8 | Logout

### GVRP Global Settings

GVRP Global Settings

GVRP State:  Enabled  Disabled

Apply

GVRP Timer Settings

Join Time (100-100000)	<input type="text" value="200"/>	ms
Leave Time (100-100000)	<input type="text" value="600"/>	ms
Leave All Time (100-100000)	<input type="text" value="10000"/>	ms

Apply

**Note:**  
 Leave Time should be greater than 2\*Join Time.  
 Leave All Time should be greater than Leave Time.

Done

Trusted sites | Protected Mode: Off

DGS-3120-24TC - Microsoft Internet Explorer provided by D-Link Australia

http://10.90.90.90/www/main.html

D-Link Building Networks for People

Refresh Interval: 10 secs

System Up Time: 00 Days 00:17:41 | Logged in as Administrator, Anonymous - 10.90.90.8 | Logout

### GVRP Port Settings

Unit: 1 | From Port: 01 | To Port: 01 | PVID (1-4094): | GVRP: Disabled | Ingress Checking: Enabled | Acceptable Frame Type: All

Apply

#### Unit 1 Settings

Port	PVID	GVRP	Ingress Checking	Acceptable Frame Type
8	1	Disabled	Enabled	All
9	1	Disabled	Enabled	All
10	1	Disabled	Enabled	All
11	1	Disabled	Enabled	All
12	1	Disabled	Enabled	All
13	1	Disabled	Enabled	All
14	1	Disabled	Enabled	All
15	22	Disabled	Enabled	All
16	22	Disabled	Enabled	All
17	22	Disabled	Enabled	All
18	22	Disabled	Enabled	All
19	22	Disabled	Enabled	All
20	22	Disabled	Enabled	All
21	22	Disabled	Enabled	All

Done

Trusted sites | Protected Mode: Off

DGS-3120-24TC - Microsoft Internet Explorer provided by D-Link Australia

http://10.90.90.90/www/main.html

D-Link Building Networks for People

Refresh Interval: 10 secs

System Up Time: 00 Days 00:18:43 | Logged in as Administrator, Anonymous - 10.90.90.8 | Logout

### MAC-based VLAN Settings

MAC Address: |  VID (1-4094) |  VLAN Name: | Find | Add

View All | Delete All

Total Entries: 0

MAC Address	VID	Status	Type
-------------	-----	--------	------

Waiting for http://10.90.90.90/html/infoabar.html...

Trusted sites | Protected Mode: Off

DGS-3120-24TC - Microsoft Internet Explorer provided by D-Link Australia

http://10.90.90.90/www/main.html

D-Link Building Networks for People

Refresh Interval: 10 secs

System Up Time: 00 Days 00:19:04 | Logged in as Administrator, Anonymous - 10.90.90.8 | Logout

### Private VLAN Settings

**Add Private VLAN**

VLAN Name  (Max: 32 characters) VID (2-4094)

VLAN List  (e.g.: 2, 4-6)

**Find Private VLAN**

VLAN Name  (Max: 32 characters)

VID (2-4094)

Total Entries: 0

VID	VLAN Name	Promiscuous Ports	Trunk Ports
Total Entries: 0			

Done

Trusted sites | Protected Mode: Off

DGS-3120-24TC - Microsoft Internet Explorer provided by D-Link Australia

http://10.90.90.90/www/main.html

D-Link Building Networks for People

Refresh Interval: 10 secs

System Up Time: 00 Days 00:19:04 | Logged in as Administrator, Anonymous - 10.90.90.8 | Logout

### PVID Auto Assign Settings

PVID Auto Assign State:  Enabled  Disabled

Done

Trusted sites | Protected Mode: Off



DGS-3120-24TC - Microsoft Internet Explorer provided by D-Link Australia

http://10.90.90.90/www/main.html

D-Link Building Networks for People

Refresh Interval: 10 secs

System Up Time: 00 Days 00:19:24 | Logged in as Administrator, Anonymous - 10.90.90.8 | Logout

### Voice VLAN Global Settings

Enabled  
 Disabled

Voice VLAN Name:

Voice VID (1-4094):

Priority: 5

Aging Time (1-65535): 720 min

Log State: Enabled

Apply

Stacking Status: Done

Trusted sites | Protected Mode: Off

DGS-3120-24TC - Microsoft Internet Explorer provided by D-Link Australia

http://10.90.90.90/www/main.html

D-Link Building Networks for People

Refresh Interval: 10 secs

System Up Time: 00 Days 00:19:35 | Logged in as Administrator, Anonymous - 10.90.90.8 | Logout

### Voice VLAN Port Settings

Unit	From Port	To Port	State	Mode
1	01	01	Disabled	Auto

Unit 1 Settings

Port	State	Mode
1	Disabled	Auto
2	Disabled	Auto
3	Disabled	Auto
4	Disabled	Auto
5	Disabled	Auto
6	Disabled	Auto
7	Disabled	Auto
8	Disabled	Auto
9	Disabled	Auto
10	Disabled	Auto
11	Disabled	Auto
12	Disabled	Auto
13	Disabled	Auto

Stacking Status: Done

Trusted sites | Protected Mode: Off

DGS-3120-24TC - Microsoft Internet Explorer provided by D-Link Australia

http://10.90.90.90/www/main.html

D-Link Building Networks for People

Refresh Interval: 10 secs

System Up Time: 00 Days 00:20:26 | Logged in as Administrator, Anonymous - 10.90.90.8 | Logout

### Voice VLAN OUI Settings

OUI Address      Mask      Description

Apply      Delete All

**Total Entries: 8**

OUI Address	Mask	Description	Edit	Delete
00-01-E3-00-00-00	FF-FF-FF-00-00-00	Siemens	Edit	Delete
00-03-6B-00-00-00	FF-FF-FF-00-00-00	Cisco	Edit	Delete
00-09-6E-00-00-00	FF-FF-FF-00-00-00	Avaya	Edit	Delete
00-0F-E2-00-00-00	FF-FF-FF-00-00-00	Huawei&3COM	Edit	Delete
00-60-B9-00-00-00	FF-FF-FF-00-00-00	NEC&Philips	Edit	Delete
00-D0-1E-00-00-00	FF-FF-FF-00-00-00	Pingtel	Edit	Delete
00-E0-75-00-00-00	FF-FF-FF-00-00-00	Veritel	Edit	Delete
00-E0-BB-00-00-00	FF-FF-FF-00-00-00	3COM	Edit	Delete

Stacking Status: Done

Trusted sites | Protected Mode: Off

DGS-3120-24TC - Microsoft Internet Explorer provided by D-Link Australia

http://10.90.90.90/www/main.html

D-Link Building Networks for People

Refresh Interval: 10 secs

System Up Time: 00 Days 00:20:47 | Logged in as Administrator, Anonymous - 10.90.90.8 | Logout

### Voice VLAN Device

Unit: 1

**Total Entries: 0**

Port	Voice Device	Start Time	Last Active Time
------	--------------	------------	------------------

Stacking Status: Done

Trusted sites | Protected Mode: Off

DGS-3120-24TC - Microsoft Internet Explorer provided by D-Link Australia

http://10.90.90.90/www/main.html

D-Link Building Networks for People

Refresh Interval: 10 secs

System Up Time: 00 Days 00:20:57 | Logged in as Administrator, Anonymous - 10.90.90.8 | Logout

### VLAN Trunk Settings

VLAN Trunk Global Settings

VLAN Trunk State:  Enabled  Disabled Apply

VLAN Trunk Settings

Select All Clear All Apply

Unit: 1

Port	01	02	03	04	05	06	07	08	09	10	11	12	13	14	15	16	17	18	19	20	21	22	23	24
Ports:																								

Done

DGS-3120-24TC - Microsoft Internet Explorer provided by D-Link Australia

http://10.90.90.90/www/main.html

D-Link Building Networks for People

Refresh Interval: 10 secs

System Up Time: 00 Days 00:21:49 | Logged in as Administrator, Anonymous - 10.90.90.8 | Logout

### Browse VLAN

VID:  Find

VID: 1  
 VLAN Name: default  
 VLAN Type: Static  
 Advertisement: Enabled

Total Entries: 2

Unit	Port																							
	1	2	3	4	5	6	7	8	9	10	11	12	13	14	15	16	17	18	19	20	21	22	23	24
1	U	U	U	U	U	U	U	U	U	U	U	U	U	U	U	U	U	U	U	U	U	U	U	U

1/2 1 2 > >>  Go

Note: T: Tagged Port, U: Untagged Port, F: Forbidden Port

Done

DGS-3120-24TC - Microsoft Internet Explorer provided by D-Link Australia

http://10.90.90.90/www/main.html

D-Link Building Networks for People

Refresh Interval: 10 secs

System Up Time: 00 Days 00:22:20 | Logged in as Administrator, Anonymous - 10.90.90.8 | Logout

Stack ID: 1

### Show VLAN Ports

Port List (e.g.: 1:1, 1:5-1:10)

Total Entries: 34

Ports	VID	Untagged	Tagged	Dynamic	Forbidden
1:11	1	X	-	-	-
1:12	1	X	-	-	-
1:13	1	X	-	-	-
1:14	1	X	-	-	-
1:15	1	X	-	-	-
1:15	22	X	-	-	-
1:16	1	X	-	-	-
1:16	22	X	-	-	-
1:17	1	X	-	-	-
1:17	22	X	-	-	-

Done

DGS-3120-24TC - Microsoft Internet Explorer provided by D-Link Australia

http://10.90.90.90/www/main.html

D-Link Building Networks for People

Refresh Interval: 10 secs

System Up Time: 00 Days 00:22:30 | Logged in as Administrator, Anonymous - 10.90.90.8 | Logout

Stack ID: 1

### STP Bridge Global Settings

STP Global Settings

STP State:  Enabled  Disabled

STP Version: RSTP

Forwarding BPDU: Disabled

Bridge Max Age (6-40): 20 sec

Bridge Hello Time (1-2): 2 sec

Bridge Forward Delay (4-30): 15 sec

TX Hold Count (1-10): 6 times

Max Hops (6-40): 20 times

Done

DGS-3120-24TC - Microsoft Internet Explorer provided by D-Link Australia

http://10.90.90.90/www/main.html

D-Link Building Networks for People

Refresh Interval: 10 secs

System Up Time: 00 Days 00:22:51 | Logged in as Administrator, Anonymous - 10.90.90.8 | Logout

### STP Port Settings

Unit: 1 | From Port: 01 | To Port: 01

External Cost (0 = Auto): 0 | Migrate: Yes | Edge: Auto

P2P: Auto | Port STP: Enabled | Restricted Role: False

Restricted TCN: False | Forward BPDU: Enabled

Apply

Port	External Cost	Edge	P2P	Port STP	Restricted Role	Restricted TCN	Forward BPDU	Hello Time
1	Auto/200000	False/No	Auto/Yes	Enabled	False	False	Disabled	2/2
2	Auto/200000	False/No	Auto/Yes	Enabled	False	False	Disabled	2/2
3	Auto/200000	False/No	Auto/Yes	Enabled	False	False	Disabled	2/2
4	Auto/200000	False/No	Auto/Yes	Enabled	False	False	Disabled	2/2

Port field:  
M = Trunk Member, T = Trunk Member  
External Cost, Edge, P2P and Hello Time fields:  
Value1/Value2 (Value1 = Configured value; Value2 = Actual value)

Stacking Status: Done

Trusted sites | Protected Mode: Off

DGS-3120-24TC - Microsoft Internet Explorer provided by D-Link Australia

http://10.90.90.90/www/main.html

D-Link Building Networks for People

Refresh Interval: 10 secs

System Up Time: 00 Days 00:23:01 | Logged in as Administrator, Anonymous - 10.90.90.8 | Logout

### MST Configuration Identification

MST Configuration Identification Settings

Configuration Name: 1C-AF-F7:30-C5-9A

Revision Level (0-65535): 0

Apply

Instance ID Settings

MSTI ID (1-15):

Type: Add VID

VID List (1-4094):

Apply

Total Entries: 1

MSTI ID	VID List
CIST	1-4094

Edit | Delete

Stacking Status: Done

Trusted sites | Protected Mode: Off

DGS-3120-24TC - Microsoft Internet Explorer provided by D-Link Australia

http://10.90.90.90/www/main.html

D-Link Building Networks for People

Refresh Interval: 10 secs

System Up Time: 00 Days 00:23:12 | Logged in as Administrator, Anonymous - 10.90.90.8 | Logout

Stack ID: 1

**STP Instance Settings**

STP Priority Settings

MSTI ID:  Priority: 0

Apply

Total Entries: 1

Instance Type	Instance Status	Instance Priority
CIST	Disabled	32768 (Bridge Priority: 32768, SYS ID Ext: 0)

STP Instance Operational Status

MSTP ID	--	Designated Root Bridge	--
External Root Cost	--	Regional Root Bridge	--
Internal Root Cost	--	Designated Bridge	--
Root Port	--	Max Age	--
Forward Delay	--	Remaining Hops	--
Last Topology Change	--	Topology Changes Count	--

Done

Trusted sites | Protected Mode: Off

DGS-3120-24TC - Microsoft Internet Explorer provided by D-Link Australia

http://10.90.90.90/www/main.html

D-Link Building Networks for People

Refresh Interval: 10 secs

System Up Time: 00 Days 00:23:22 | Logged in as Administrator, Anonymous - 10.90.90.8 | Logout

Stack ID: 1

**MSTP Port Information**

Unit: 1 Port: 01 Find

MSTP Port Setting

Instance ID:  Internal Path Cost (1-200000000):  Priority: 0

Apply

Port 1 Settings

MSTI	Designated Bridge	Internal Path Cost	Priority	Status	Role
0	N/A	200000	128	Disabled	Disabled

Done

Trusted sites | Protected Mode: Off

DGS-3120-24TC - Microsoft Internet Explorer provided by D-Link Australia

http://10.90.90.90/www/main.html

D-Link Building Networks for People

Refresh Interval: 10 secs

System Up Time: 00 Days 00:23:34 | Logged in as Administrator, Anonymous - 10.90.90.8 | Logout

Stack ID: 1

Port Trunking Settings

Algorithm: MAC Source

Total Entries: 0

Group ID	Type	Member Ports	Active Ports	Status	Flooding Port
1	Static	Master Port	1	01	State Disabled

Edit Trunking Info

Unit	Type	Master Port	State	
1	Static	1	01	Disabled

Ports: 01 02 03 04 05 06 07 08 09 10 11 12 13 14 15 16 17 18 19 20 21 22 23 24

Note: Maximum 8 ports in a static trunk or LACP group.

Stacking Status: Done

Trusted sites | Protected Mode: Off

DGS-3120-24TC - Microsoft Internet Explorer provided by D-Link Australia

http://10.90.90.90/www/main.html

D-Link Building Networks for People

Refresh Interval: 10 secs

System Up Time: 00 Days 00:23:55 | Logged in as Administrator, Anonymous - 10.90.90.8 | Logout

Stack ID: 1

LACP Port Settings

Unit	From Port	To Port	Activity
1	01	01	Passive

Unit 1 Settings

Port	Activity
1	Passive
2	Passive
3	Passive
4	Passive
5	Passive
6	Passive
7	Passive
8	Passive
9	Passive
10	Passive
11	Passive
12	Passive
13	Passive

Stacking Status: Done

Trusted sites | Protected Mode: Off

DGS-3120-24TC - Microsoft Internet Explorer provided by D-Link Australia

http://10.90.90.90/www/main.html

D-Link Building Networks for People

Refresh Interval: 10 secs

System Up Time: 00 Days 00:24:05 | Logged in as Administrator, Anonymous - 10.90.90.8 | Logout

Stack ID: 1

Static FDB Settings

Unicast Static FDB Settings

Unicast Forwarding Settings

VLAN Name  MAC Address: 00-00-00-00-00-00

VLAN List  Port:

Apply

Total Entries: 0

VID	VLAN Name	MAC Address	Port
Total Entries: 0			

Done

Trusted sites | Protected Mode: Off

100%

DGS-3120-24TC - Microsoft Internet Explorer provided by D-Link Australia

http://10.90.90.90/www/main.html

D-Link Building Networks for People

Refresh Interval: 10 secs

System Up Time: 00 Days 00:24:15 | Logged in as Administrator, Anonymous - 10.90.90.8 | Logout

Stack ID: 1

Static FDB Settings

Multicast Static FDB Settings

Multicast Forwarding Settings

VID:

Multicast MAC Address:

Unit: 1

Clear All Apply

Port	Select All	01	02	03	04	05	06	07	08	09	10	11	12	13	14	15	16	17	18	19	20	21	22	23	24
None	All	<input checked="" type="checkbox"/>	<input checked="" type="checkbox"/>	<input checked="" type="checkbox"/>	<input checked="" type="checkbox"/>	<input checked="" type="checkbox"/>	<input checked="" type="checkbox"/>	<input checked="" type="checkbox"/>	<input checked="" type="checkbox"/>	<input checked="" type="checkbox"/>	<input checked="" type="checkbox"/>	<input checked="" type="checkbox"/>	<input checked="" type="checkbox"/>	<input checked="" type="checkbox"/>	<input checked="" type="checkbox"/>	<input checked="" type="checkbox"/>	<input checked="" type="checkbox"/>	<input checked="" type="checkbox"/>	<input checked="" type="checkbox"/>	<input checked="" type="checkbox"/>	<input checked="" type="checkbox"/>	<input checked="" type="checkbox"/>	<input checked="" type="checkbox"/>	<input checked="" type="checkbox"/>	
Egress	All	<input type="checkbox"/>	<input type="checkbox"/>	<input type="checkbox"/>	<input type="checkbox"/>	<input type="checkbox"/>	<input type="checkbox"/>	<input type="checkbox"/>	<input type="checkbox"/>	<input type="checkbox"/>	<input type="checkbox"/>	<input type="checkbox"/>	<input type="checkbox"/>	<input type="checkbox"/>	<input type="checkbox"/>	<input type="checkbox"/>	<input type="checkbox"/>	<input type="checkbox"/>	<input type="checkbox"/>	<input type="checkbox"/>	<input type="checkbox"/>	<input type="checkbox"/>	<input type="checkbox"/>	<input type="checkbox"/>	

Egress Ports

Total Entries: 0

VID	MAC Address	Mode	Egress Ports
Total Entries: 0			

Done

Trusted sites | Protected Mode: Off

100%



DGS-3120-24TC - Microsoft Internet Explorer provided by D-Link Australia

http://10.90.90.90/www/main.html

D-Link Building Networks for People

Refresh Interval: 10 secs

System Up Time: 00 Days 00:24:25 | Logged in as Administrator, Anonymous - 10.90.90.8 | Logout

Stack ID: 1

MAC Notification Settings

MAC Notification Global Settings

State:  Enabled  Disabled

Interval (1-2147483647): 1 sec

History Size (1-500): 1

Apply

MAC Notification Port Settings

Unit	From Port	To Port	State
1	01	01	Disabled

Apply

Unit 1 Settings

Port	MAC Address Notification State
01	Disabled
02	Disabled
03	Disabled
04	Disabled
05	Disabled
06	Disabled

Done

Trusted sites | Protected Mode: Off

DGS-3120-24TC - Microsoft Internet Explorer provided by D-Link Australia

http://10.90.90.90/www/main.html

D-Link Building Networks for People

Refresh Interval: 10 secs

System Up Time: 00 Days 00:24:25 | Logged in as Administrator, Anonymous - 10.90.90.8 | Logout

Stack ID: 1

MAC Address Aging Time Settings

MAC Address Aging Time (10-1000000): 300 sec

Apply

Done

Trusted sites | Protected Mode: Off

DGS-3120-24TC - Microsoft Internet Explorer provided by D-Link Australia

http://10.90.90.90/www/main.html

D-Link Building Networks for People

Refresh Interval: 10 secs

System Up Time: 00 Days 00:24:46 | Logged in as Administrator, Anonymous - 10.90.90.8 | Logout

Stack ID: 1

### MAC Address Table

Unit: 1 | Port: 01

VLAN Name:

VID List:

MAC Address: 00-00-00-00-00-00

Security:

View All Entries | Clear All Entries

Total Entries: 19

VID	VLAN Name	MAC Address	Port	Type	Status	
1	default	00-0C-29-80-1C-99	1:3	Dynamic	Forward	Add to Static MAC table
1	default	00-0C-29-8B-46-58	1:3	Dynamic	Forward	Add to Static MAC table
1	default	00-0F-B0-E2-23-CD	1:3	Dynamic	Forward	Add to Static MAC table
1	default	00-13-46-3E-06-3A	1:3	Dynamic	Forward	Add to Static MAC table

Done

DGS-3120-24TC - Microsoft Internet Explorer provided by D-Link Australia

http://10.90.90.90/www/main.html

D-Link Building Networks for People

Refresh Interval: 10 secs

System Up Time: 00 Days 00:25:07 | Logged in as Administrator, Anonymous - 10.90.90.8 | Logout

Stack ID: 1

### ARP & FDB Table

Unit: 1 | Port: 01

MAC Address: 00-00-00-00-00-00

IP Address:

Find by Port | Find by MAC | Find by IP Address

View All Entries

Total Entries: 1

Interface	IP Address	MAC Address	VLAN Name	Port
System	10.90.90.8	00-1A-4B-69-DE-FF	default	1:3

Done

DGS-3120-24TC - Microsoft Internet Explorer provided by D-Link Australia

http://10.90.90.90/www/main.html

D-Link Building Networks for People

Refresh Interval: 10 secs

System Up Time: 00 Days 00:25:27 | Logged in as Administrator, Anonymous - 10.90.90.8 | Logout

Stack ID: 1

### IGMP Snooping Settings

IGMP Snooping Global Settings

IGMP Snooping State:  Enabled  Disabled Apply

IGMP Data Driven Learning Settings

Max Learned Entry Value (1-1024):  Apply

Total Entries: 2

VID	VLAN Name	State	
1	default	Disabled	<a href="#">Modify Router Port</a> <span>Edit</span>
22	test	Disabled	<a href="#">Modify Router Port</a> <span>Edit</span>

1/1 1 Go

Done Trusted sites | Protected Mode: Off 100%

DGS-3120-24TC - Microsoft Internet Explorer provided by D-Link Australia

http://10.90.90.90/www/main.html

D-Link Building Networks for People

Refresh Interval: 10 secs

System Up Time: 00 Days 00:25:37 | Logged in as Administrator, Anonymous - 10.90.90.8 | Logout

Stack ID: 1

### IGMP Snooping Rate Limit Settings

Port List  (e.g.: 1,1, 2,3-2,4)  VID List  (e.g.: 1, 3-4) Apply  
 Rate Limit (1-1000):   No Limit

Port List   VID List  Find

Total Entries: 2

VID	Rate Limit	
1	No Limit	<span>Edit</span>
22	No Limit	<span>Edit</span>

1/1 1 Go

Done Trusted sites | Protected Mode: Off 100%

DGS-3120-24TC - Microsoft Internet Explorer provided by D-Link Australia

http://10.90.90.90/www/main.html

D-Link Building Networks for People

Refresh Interval: 10 secs

System Up Time: 00 Days 00:25:48 | Logged in as Administrator, Anonymous - 10.90.90.8 | Logout

### IGMP Snooping Static Group Settings

VLAN Name (Max: 32 characters)  
 VID List (e.g.: 1-3, 5)  
 IPv4 Address (e.g.: 224.1.1.1)

Find Create Delete

View All

Total Entries: 0

VID	VLAN Name	IP Address	Static Member Port

Stacking Status: Done

DGS-3120-24TC - Microsoft Internet Explorer provided by D-Link Australia

http://10.90.90.90/www/main.html

D-Link Building Networks for People

Refresh Interval: 10 secs

System Up Time: 00 Days 00:25:58 | Logged in as Administrator, Anonymous - 10.90.90.8 | Logout

### IGMP Router Port

VID:

Find

VID: 1  
VLAN Name: default

Total Entries: 2

Unit	Port
1	01 02 03 04 05 06 07 08 09 10 11 12 13 14 15 16 17 18 19 20 21 22 23 24

1/2 1 2 > >> Go

Note: S:Static Router Port, D:Dynamic Router Port, F:Forbidden Router Port

Stacking Status: Done

DGS-3120-24TC - Microsoft Internet Explorer provided by D-Link Australia

http://10.90.90.90/www/main.html

D-Link Building Networks for People

Refresh Interval: 10 secs

System Up Time: 00 Days 00:26:08 | Logged in as Administrator, Anonymous - 10.90.90.8 | Logout

Stack ID: 1

IGMP Snooping Group

VLAN Name   
 VID List (e.g.: 1, 4-6)   
 Port List (e.g.: 1-1, 1:3-1:5)   
 Group IPv4 Address  Data Driven

Find Clear Data Driven View All Clear All Data Driven

Total Entries: 0

VID	VLAN Name	Source	Group	Member Port	Router Port	Group Type	Up Time	Expiry Time	Filter Mode
Total Entries: 0									

Done Trusted sites | Protected Mode: Off

DGS-3120-24TC - Microsoft Internet Explorer provided by D-Link Australia

http://10.90.90.90/www/main.html

D-Link Building Networks for People

Refresh Interval: 10 secs

System Up Time: 00 Days 00:26:19 | Logged in as Administrator, Anonymous - 10.90.90.8 | Logout

Stack ID: 1

IGMP Snooping Forwarding Table

VLAN Name   VID List (e.g.: 1, 4-6)

Find View All

Total Entries: 0

VLAN Name	Source IP	Multicast Group	Port Member
Total Entries: 0			

Done Trusted sites | Protected Mode: Off

DGS-3120-24TC - Microsoft Internet Explorer provided by D-Link Australia

http://10.90.90.90/www/main.html

D-Link Building Networks for People

Refresh Interval: 10 secs

System Up Time: 00 Days 00:26:29 | Logged in as Administrator, Anonymous - 10.90.90.8 | Logout

Stack ID: 1

### IGMP Snooping Counter

VLAN Name  
 VID List (e.g.: 1, 4-6)  
 Port List (e.g.: 1-1, 1-3-1-5)

Find View All

Total Entries: 0

VLAN Name

Done Trusted sites | Protected Mode: Off 100%

DGS-3120-24TC - Microsoft Internet Explorer provided by D-Link Australia

http://10.90.90.90/www/main.html

D-Link Building Networks for People

Refresh Interval: 10 secs

System Up Time: 00 Days 00:26:50 | Logged in as Administrator, Anonymous - 10.90.90.8 | Logout

Stack ID: 1

### MLD Snooping Settings

MLD Snooping Global Settings

MLD Snooping State:  Enabled  Disabled

Apply

MLD Data Driven Learning Settings

Max Learned Entry Value (1-1024): 128

Apply

Total Entries: 2

VID	VLAN Name	State	
1	default	Disabled	<a href="#">Modify Router Port</a> <input type="button" value="Edit"/>
22	test	Disabled	<a href="#">Modify Router Port</a> <input type="button" value="Edit"/>

1/1 1 Go

Done Trusted sites | Protected Mode: Off 100%

DGS-3120-24TC - Microsoft Internet Explorer provided by D-Link Australia

http://10.90.90.90/www/main.html

D-Link Building Networks for People

Refresh Interval: 10 secs

System Up Time: 00 Days 00:27:00 | Logged in as Administrator, Anonymous - 10.90.90.8 | Logout

### MLD Snooping Rate Limit Settings

Port List  (e.g.: 1,1, 2,3-2,4)  VID List  (e.g.: 1, 3-4)

Rate Limit (1-1000)   No Limit

Port List   VID List

Total Entries: 2

VID	Rate Limit	
1	No Limit	<input type="button" value="Edit"/>
22	No Limit	<input type="button" value="Edit"/>

1/1 1

Done Trusted sites | Protected Mode: Off 100%

DGS-3120-24TC - Microsoft Internet Explorer provided by D-Link Australia

http://10.90.90.90/www/main.html

D-Link Building Networks for People

Refresh Interval: 10 secs

System Up Time: 00 Days 00:27:10 | Logged in as Administrator, Anonymous - 10.90.90.8 | Logout

### MLD Snooping Static Group Settings

VLAN Name  (Max: 32 characters)

VID List  (e.g.: 1-3, 5)

IPv6 Address  (e.g.: FF56::123)

Total Entries: 0

VID	VLAN Name	IP Address	Static Member Port
-----	-----------	------------	--------------------

Done Trusted sites | Protected Mode: Off 100%

DGS-3120-24TC - Microsoft Internet Explorer provided by D-Link Australia

http://10.90.90.90/www/main.html

D-Link Building Networks for People

Refresh Interval: 10 secs

System Up Time: 00 Days 00:27:31 | Logged in as Administrator, Anonymous - 10.90.90.8 | Logout

Stack ID: 1

### MLD Router Port

VID:

VID: 1

VLAN Name: default

Total Entries: 2

Unit	Port
01	02

Note: S:Static Router Port, D:Dynamic Router Port, F:Forbidden Router Port

DGS-3120-24TC - Microsoft Internet Explorer provided by D-Link Australia

http://10.90.90.90/www/main.html

D-Link Building Networks for People

Refresh Interval: 10 secs

System Up Time: 00 Days 00:27:41 | Logged in as Administrator, Anonymous - 10.90.90.8 | Logout

Stack ID: 1

### MLD Snooping Group

VLAN Name

VID List (e.g.: 1, 4-6)

Port List (e.g.: 1:1, 1:3-1:5)

Group IPv6 Address:  Data Driven:

Find:  Clear Data Driven:

View All:  Clear All Data Driven:

Total Entries: 0

VID	VLAN Name	Source	Group	Member Port	Router Port	Group Type	Up Time	Expiry Time	Filter Mode
-----	-----------	--------	-------	-------------	-------------	------------	---------	-------------	-------------



DGS-3120-24TC - Microsoft Internet Explorer provided by D-Link Australia

http://10.90.90.90/www/main.html

D-Link Building Networks for People

Refresh Interval: 10 secs

System Up Time: 00 Days 00:27:41 | Logged in as Administrator, Anonymous - 10.90.90.8 | Logout

Stack ID: 1

### MLD Snooping Forwarding Table

VLAN Name 
 VID List (e.g.: 1, 4-6)

Total Entries: 0

VLAN Name	Source IP	Multicast Group	Port Member

Done

Trusted sites | Protected Mode: Off

DGS-3120-24TC - Microsoft Internet Explorer provided by D-Link Australia

http://10.90.90.90/www/main.html

D-Link Building Networks for People

Refresh Interval: 10 secs

System Up Time: 00 Days 00:27:51 | Logged in as Administrator, Anonymous - 10.90.90.8 | Logout

Stack ID: 1

### MLD Snooping Counter

VLAN Name 
 VID List (e.g.: 1, 4-6) 
 Port List (e.g.: 1:1, 1:3-1:5)

Total Entries: 0

VLAN Name

Done

Trusted sites | Protected Mode: Off

DGS-3120-24TC - Microsoft Internet Explorer provided by D-Link Australia

http://10.90.90.90/www/main.html

D-Link Building Networks for People

Refresh Interval: 10 secs

System Up Time: 00 Days 00:28:12 | Logged in as Administrator, Anonymous - 10.90.90.8 | Logout

### IGMP Multicast Group Profile Settings

Profile Name:  (Max: 32 characters)

Add Find

Delete All View All

Total Entries: 0

Profile Name

Stacking Status: Done

Trusted sites | Protected Mode: Off

DGS-3120-24TC - Microsoft Internet Explorer provided by D-Link Australia

http://10.90.90.90/www/main.html

D-Link Building Networks for People

Refresh Interval: 10 secs

System Up Time: 00 Days 00:28:22 | Logged in as Administrator, Anonymous - 10.90.90.8 | Logout

### IGMP Snooping Multicast VLAN Settings

IGMP Multicast VLAN State:  Enabled  Disabled Apply

IGMP Multicast VLAN Forward Unmatched:  Enabled  Disabled Apply

VLAN Name:  VID (2-4094):  Remap Priority:  None  Replace Priority Add

Total Entries: 0

VID	VLAN Name	Remap Priority
Total Entries: 0		

Stacking Status: Done

Trusted sites | Protected Mode: Off

DGS-3120-24TC - Microsoft Internet Explorer provided by D-Link Australia

http://10.90.90.90/www/main.html

D-Link Building Networks for People

Refresh Interval: 10 secs

System Up Time: 00 Days 00:28:22 | Logged in as Administrator, Anonymous - 10.90.90.8 | Logout

### MLD Multicast Group Profile Settings

Profile Name:  (Max: 32 characters)

Add Find

Delete All View All

Total Entries: 0

Profile Name

Stack ID: 1

Done

Trusted sites | Protected Mode: Off

100%

DGS-3120-24TC - Microsoft Internet Explorer provided by D-Link Australia

http://10.90.90.90/www/main.html

D-Link Building Networks for People

Refresh Interval: 10 secs

System Up Time: 00 Days 00:28:33 | Logged in as Administrator, Anonymous - 10.90.90.8 | Logout

### MLD Snooping Multicast VLAN Settings

MLD Multicast VLAN State:  Enabled  Disabled Apply

MLD Multicast VLAN Forward Unmatched:  Enabled  Disabled Apply

VLAN Name:  VID (2-4094):  Remap Priority:  None  Replace Priority Add

Total Entries: 0

VID	VLAN Name	Remap Priority
Total Entries: 0		

Stack ID: 1

Done

Trusted sites | Protected Mode: Off

100%

DGS-3120-24TC - Microsoft Internet Explorer provided by D-Link Australia

http://10.90.90.90/www/main.html

D-Link Building Networks for People

Refresh Interval: 10 secs

System Up Time: 00 Days 00:28:53 | Logged in as Administrator, Anonymous - 10.90.90.8 | Logout

### IPv4 Multicast Profile Settings

Profile ID (1-24):  Profile Name:  (Max: 32 characters)

Add Find

Delete All

Total Entries: 0

Profile ID	Profile Name
------------	--------------

Stacking Status: Done

Trusted sites | Protected Mode: Off

DGS-3120-24TC - Microsoft Internet Explorer provided by D-Link Australia

http://10.90.90.90/www/main.html

D-Link Building Networks for People

Refresh Interval: 10 secs

System Up Time: 00 Days 00:29:03 | Logged in as Administrator, Anonymous - 10.90.90.8 | Logout

### IPv4 Limited Multicast Range Settings

Ports:  (e.g.: 1:1, 1:4-1:5) Access: Permit Apply

Ports:  (e.g.: 1:1, 1:4-1:5) Profile ID:  Access: Permit Add Delete

Ports:  (e.g.: 1:1, 1:4-1:5) Find

Total Entries: 2

VID	Access State	Profile ID
1	Deny	
22	Deny	

1/1 1 Go

Stacking Status: Done

Trusted sites | Protected Mode: Off

DGS-3120-24TC - Microsoft Internet Explorer provided by D-Link Australia

http://10.90.90.90/www/main.html

D-Link Building Networks for People

Refresh Interval: 10 secs

System Up Time: 00 Days 00:29:03 | Logged in as Administrator, Anonymous - 10.90.90.8 | Logout

### IPv4 Max Multicast Group Settings

Ports:  (e.g.: 1:1, 1:4-1:5) Max Group (1-1024):   Infinite Action: Drop

Ports:  (e.g.: 1:1, 1:4-1:5)

Total Entries: 2

VID	Max Multicast Group Number	Action
1	Infinite	Drop
22	Infinite	Drop

1/1 1 Go

Done Trusted sites | Protected Mode: Off

DGS-3120-24TC - Microsoft Internet Explorer provided by D-Link Australia

http://10.90.90.90/www/main.html

D-Link Building Networks for People

Refresh Interval: 10 secs

System Up Time: 00 Days 00:29:25 | Logged in as Administrator, Anonymous - 10.90.90.8 | Logout

### IPv6 Multicast Profile Settings

Profile ID (1-24):  Profile Name:  (Max: 32 characters)

Total Entries: 0

Profile ID	Profile Name
------------	--------------

Done Trusted sites | Protected Mode: Off

DGS-3120-24TC - Microsoft Internet Explorer provided by D-Link Australia

http://10.90.90.90/www/main.html

D-Link Building Networks for People

System Up Time: 00 Days 00:30:17 | Logged in as Administrator, Anonymous - 10.90.90.8 | Logout

### IPv6 Limited Multicast Range Settings

Ports:  (e.g.: 1:1, 1:4-1:5) Access: **Permit**

Ports:  (e.g.: 1:1, 1:4-1:5) Profile ID:  Access: **Permit**

Ports:  (e.g.: 1:1, 1:4-1:5)

Total Entries: 2

VID	Access State	Profile ID
1	Deny	
22	Deny	

1/1 1 Go

DGS-3120-24TC - Microsoft Internet Explorer provided by D-Link Australia

http://10.90.90.90/www/main.html

D-Link Building Networks for People

System Up Time: 00 Days 00:30:17 | Logged in as Administrator, Anonymous - 10.90.90.8 | Logout

### IPv6 Max Multicast Group Settings

Ports:  (e.g.: 1:1, 1:4-1:5) Max Group (1-1024):   Infinite Action: **Drop**

Ports:  (e.g.: 1:1, 1:4-1:5)

Total Entries: 2

VID	Max Multicast Group Number	Action
1	Infinite	Drop
22	Infinite	Drop

1/1 1 Go

DGS-3120-24TC - Microsoft Internet Explorer provided by D-Link Australia

http://10.90.90.90/www/main.html

D-Link Building Networks for People

Refresh Interval: 10 secs

System Up Time: 00 Days 00:30:28 | Logged in as Administrator, Anonymous - 10.90.90.8 | Logout

### Multicast Filtering Mode

VLAN Name  VID List

Multicast Filter Mode: **Forward All Groups**

All

VLAN Name  VID List

Find

Total Entries: 2

VLAN ID	VLAN Name	Multicast Filter Mode
1	default	Forward Unregistered Groups
22	test	Forward Unregistered Groups

1/1 1 Go

Stack ID: 1

Done

Trusted sites | Protected Mode: Off

DGS-3120-24TC - Microsoft Internet Explorer provided by D-Link Australia

http://10.90.90.90/www/main.html

D-Link Building Networks for People

Refresh Interval: 10 secs

System Up Time: 00 Days 00:30:48 | Logged in as Administrator, Anonymous - 10.90.90.8 | Logout

### LLDP Global Settings

LLDP State:  Enabled  Disabled

LLDP Forward Message:  Enabled  Disabled

Message TX Interval (5-32768):  sec

Message TX Hold Multiplier (2-10):

LLDP Reinit Delay (1-10):  sec

LLDP TX Delay (1-8192):  sec

LLDP Notification Interval (5-3600):  sec

Apply

#### LLDP System Information

Chassis ID Subtype	MAC Address
Chassis ID	1C-AF-F7-30-C5-9A
System Name	
System Description	Gigabit Ethernet Switch
System Capabilities	Repeater, Bridge

Stack ID: 1

Done

Trusted sites | Protected Mode: Off

DGS-3120-24TC - Microsoft Internet Explorer provided by D-Link Australia

http://10.90.90.90/www/main.html

D-Link Building Networks for People

Refresh Interval: 10 secs

System Up Time: 00 Days 00:30:48 | Logged in as Administrator, Anonymous - 10.90.90.8 | Logout

### LLDP Port Settings

Unit: 1 | From Port: 01 | To Port: 01 | Notification: Disabled | Admin Status: TX and RX

Subtype: IPv4 | Action: Disabled | Address:

Note: The IPv4 address should be the switch's address.

Apply

#### Unit 1 Settings

Port ID	Notification	Admin Status	IPv4(IPv6) Address
1	Disabled	TX and RX	
2	Disabled	TX and RX	
3	Disabled	TX and RX	
4	Disabled	TX and RX	
5	Disabled	TX and RX	
6	Disabled	TX and RX	
7	Disabled	TX and RX	
8	Disabled	TX and RX	
9	Disabled	TX and RX	

Stacking Status: Done

Trusted sites | Protected Mode: Off

DGS-3120-24TC - Microsoft Internet Explorer provided by D-Link Australia

http://10.90.90.90/www/main.html

D-Link Building Networks for People

Refresh Interval: 10 secs

System Up Time: 00 Days 00:30:59 | Logged in as Administrator, Anonymous - 10.90.90.8 | Logout

### LLDP Management Address List

IPv4 | Address:  | Find

Subtype	Address	IF Type	OID	Advertising Ports
IPv4	10.90.90.90	ifindex	1.3.6.1.4.1.171.10.1...	

Stacking Status: Done

Trusted sites | Protected Mode: Off





DGS-3120-24TC - Microsoft Internet Explorer provided by D-Link Australia

http://10.90.90.90/www/main.html

D-Link Building Networks for People

Refresh Interval: 10 secs

System Up Time: 00 Days 00:31:31 Logged in as Administrator, Anonymous - 10.90.90.8

### LLDP Dot3 TLVs Settings

Unit: 1 From Port: 01 To Port: 01

MAC / PHY Configuration Status: Disabled Link Aggregation: Disabled

Maximum Frame Size: Disabled Power Via MDI: Disabled

Apply

#### Unit 1 Settings

Port	MAC / PHY Configuration Status	Link Aggregation	Maximum Frame Size	Power Via MDI
1	Disabled	Disabled	Disabled	Disabled
2	Disabled	Disabled	Disabled	Disabled
3	Disabled	Disabled	Disabled	Disabled
4	Disabled	Disabled	Disabled	Disabled
5	Disabled	Disabled	Disabled	Disabled
6	Disabled	Disabled	Disabled	Disabled
7	Disabled	Disabled	Disabled	Disabled
8	Disabled	Disabled	Disabled	Disabled
9	Disabled	Disabled	Disabled	Disabled
10	Disabled	Disabled	Disabled	Disabled

DGS-3120-24TC - Microsoft Internet Explorer provided by D-Link Australia

http://10.90.90.90/www/main.html

D-Link Building Networks for People

Refresh Interval: 10 secs

System Up Time: 00 Days 00:31:41 Logged in as Administrator, Anonymous - 10.90.90.8

### LLDP Statistics System

LLDP Statistics

Last Change Time	4128
Number of Table Insert	0
Number of Table Delete	0
Number of Table Drop	0
Number of Table Ageout	0

Unit: 1 Port: 01 Find

#### LLDP Statistics Ports

Total TX Frames	0
Total Discarded RX Frames	0
RX Errors Frames	0
Total RX Frames	0
Total Discarded RX TLVs	0
Total Unrecognized RX TLVs	0
Total Aged out Neighbor Information	0

DGS-3120-24TC - Microsoft Internet Explorer provided by D-Link Australia

http://10.90.90.90/www/main.html

D-Link Building Networks for People

System Up Time: 00 Days 00:32:02 Logged in as Administrator, Anonymous - 10.90.90.8 Logout

### LLDP Local Port Information

LLDP Local Port Brief Table

Unit  Show Normal

Port	Port ID Subtype	Port ID	Port Description
1:1	Local	1/1	D-Link DGS-3120...
1:2	Local	1/2	D-Link DGS-3120...
1:3	Local	1/3	D-Link DGS-3120...
1:4	Local	1/4	D-Link DGS-3120...
1:5	Local	1/5	D-Link DGS-3120...
1:6	Local	1/6	D-Link DGS-3120...
1:7	Local	1/7	D-Link DGS-3120...
1:8	Local	1/8	D-Link DGS-3120...
1:9	Local	1/9	D-Link DGS-3120...
1:10	Local	1/10	D-Link DGS-3120...
1:11	Local	1/11	D-Link DGS-3120...
1:12	Local	1/12	D-Link DGS-3120...
1:13	Local	1/13	D-Link DGS-3120...
1:14	Local	1/14	D-Link DGS-3120...
1:15	Local	1/15	D-Link DGS-3120...

DGS-3120-24TC - Microsoft Internet Explorer provided by D-Link Australia

http://10.90.90.90/www/main.html

D-Link Building Networks for People

System Up Time: 00 Days 00:32:13 Logged in as Administrator, Anonymous - 10.90.90.8 Logout

### LLDP Remote Port Information

LLDP Remote Port Brief Table

Unit  Port  Find Show Normal

Total Entries: 0

Entity	Chassis ID Subtype	Chassis ID	Port ID Subtype	Port ID	Port Description
--------	--------------------	------------	-----------------	---------	------------------

DGS-3120-24TC - Microsoft Internet Explorer provided by D-Link Australia

http://10.90.90.90/www/main.html

D-Link Building Networks for People

D-Link xStack Power S1 S2 Console RPS Fan SD Master Console SD Card

Refresh Interval: 10 secs

System Up Time: 00 Days 00:32:23 | Logged in as Administrator, Anonymous - 10.90.90.8 | Logout

Stack ID: 1

### NLB FDB Settings

NLB FDB Settings

VLAN Name

VID

MAC Address

Unit: 1

Port	Select All	01	02	03	04	05	06	07	08	09	10	11	12	13	14	15	16	17	18	19	20	21	22	23	24
None	All	<input checked="" type="checkbox"/>	<input checked="" type="checkbox"/>	<input checked="" type="checkbox"/>	<input checked="" type="checkbox"/>	<input checked="" type="checkbox"/>	<input checked="" type="checkbox"/>	<input checked="" type="checkbox"/>	<input checked="" type="checkbox"/>	<input checked="" type="checkbox"/>	<input checked="" type="checkbox"/>	<input checked="" type="checkbox"/>	<input checked="" type="checkbox"/>	<input checked="" type="checkbox"/>	<input checked="" type="checkbox"/>	<input checked="" type="checkbox"/>	<input checked="" type="checkbox"/>	<input checked="" type="checkbox"/>	<input checked="" type="checkbox"/>	<input checked="" type="checkbox"/>	<input checked="" type="checkbox"/>	<input checked="" type="checkbox"/>	<input checked="" type="checkbox"/>	<input checked="" type="checkbox"/>	
Egress	All	<input type="checkbox"/>	<input type="checkbox"/>	<input type="checkbox"/>	<input type="checkbox"/>	<input type="checkbox"/>	<input type="checkbox"/>	<input type="checkbox"/>	<input type="checkbox"/>	<input type="checkbox"/>	<input type="checkbox"/>	<input type="checkbox"/>	<input type="checkbox"/>	<input type="checkbox"/>	<input type="checkbox"/>	<input type="checkbox"/>	<input type="checkbox"/>	<input type="checkbox"/>	<input type="checkbox"/>	<input type="checkbox"/>	<input type="checkbox"/>	<input type="checkbox"/>	<input type="checkbox"/>	<input type="checkbox"/>	

Egress Ports

Total Entries: 0

MAC Address	VID	Egress Ports

Stacking Status: Done

Trusted sites | Protected Mode: Off

DGS-3120-24TC - Microsoft Internet Explorer provided by D-Link Australia

http://10.90.90.90/www/main.html

D-Link Building Networks for People

D-Link xStack Power S1 S2 Console RPS Fan SD Master Console SD Card

Refresh Interval: 10 secs

System Up Time: 00 Days 00:32:44 | Logged in as Administrator, Anonymous - 10.90.90.8 | Logout

Stack ID: 1

### IPv4 Default Route Settings

IPv4 Default Route Settings

Gateway:  (e.g.: 172.18.211.10)      Metric (1-65535):

Total Entries: 0

IP Address	Netmask	Gateway	Interface Name	Cost	Protocol

Stacking Status: Done

Trusted sites | Protected Mode: Off

DGS-3120-24TC - Microsoft Internet Explorer provided by D-Link Australia

http://10.90.90.90/www/main.html

D-Link Building Networks for People

Refresh Interval: 10 secs

System Up Time: 00 Days 00:32:54 | Logged in as Administrator, Anonymous - 10.90.90.8 | Logout

Stack ID: 1

### IPv4 Route Table

Total Entries: 1

IP Address	Netmask	Gateway	Interface Name	Cost	Protocol
10.0.0.0	255.0.0.0	0.0.0.0	System	1	Local

Stacking Status: Done

DGS-3120-24TC - Microsoft Internet Explorer provided by D-Link Australia

http://10.90.90.90/www/main.html

D-Link Building Networks for People

Refresh Interval: 10 secs

System Up Time: 00 Days 00:33:04 | Logged in as Administrator, Anonymous - 10.90.90.8 | Logout

Stack ID: 1

### IP Forwarding Table

IP Address  
 Interface Name  
 Port (e.g.: 4:1)

Find

Total Entries: 1

Interface Name	IP Address	Port	Learned
System	10.90.90.8	1:3	Dynamic

1/1 1 Go

Stacking Status: Done

DGS-3120-24TC - Microsoft Internet Explorer provided by D-Link Australia

http://10.90.90.90/www/main.html

D-Link Building Networks for People

System Up Time: 00 Days 00:33:15 | Logged in as Administrator, Anonymous - 10.90.90.8 | Logout

### 802.1p Default Priority Settings

Unit: 1 | From Port: 01 | To Port: 01 | Priority: 0

802.1p Default Priority Table Unit 1 Settings

Port	Prior	Effective Priority
1	5	0
2	6	0
3	0	0
4	0	0
5	0	0
6	0	0
7	0	0
8	0	0
9	0	0

DGS-3120-24TC - Microsoft Internet Explorer provided by D-Link Australia

http://10.90.90.90/www/main.html

D-Link Building Networks for People

System Up Time: 00 Days 00:33:26 | Logged in as Administrator, Anonymous - 10.90.90.8 | Logout

### 802.1p User Priority Settings

Priority: 0 | Class ID: Class-0

802.1p User Priority Table

Priority	Class ID
0	Class-0
1	Class-1
2	Class-2
3	Class-3
4	Class-4
5	Class-5
6	Class-6
7	Class-7

DGS-3120-24TC - Microsoft Internet Explorer provided by D-Link Australia

http://10.90.90.90/www/main.html

D-Link Building Networks for People

System Up Time: 00 Days 00:33:46 | Logged in as Administrator, Anonymous - 10.90.90.8 | Logout

### Bandwidth Control Settings

Unit: 1 | From Port: 01 | To Port: 01 | Type: RX | No Limit: Disabled | Rate: 64-1024000 Kbit/sec

Bandwidth Control Table

Port	RX Rate (Kbit/sec)	TX Rate (Kbit/sec)	Effective RX (Kbit/sec)	Effective TX (Kbit/sec)
1	No Limit	No Limit	No Limit	No Limit
2	No Limit	No Limit	No Limit	No Limit
3	No Limit	No Limit	No Limit	No Limit
4	No Limit	No Limit	No Limit	No Limit
5	No Limit	No Limit	No Limit	No Limit
6	No Limit	No Limit	No Limit	No Limit
7	No Limit	No Limit	No Limit	No Limit
8	No Limit	No Limit	No Limit	No Limit
9	No Limit	No Limit	No Limit	No Limit
10	No Limit	No Limit	No Limit	No Limit
11	No Limit	No Limit	No Limit	No Limit

DGS-3120-24TC - Microsoft Internet Explorer provided by D-Link Australia

http://10.90.90.90/www/main.html

D-Link Building Networks for People

Refresh Interval: 10 secs

System Up Time: 00 Days 00:33:56 Logged in as Administrator, Anonymous - 10.90.90.8

### Queue Bandwidth Control Settings

Unit	From Port	To Port	From Queue	To Queue	Min Rate (64-1024000)	Max Rate (64-1024000)
1	01	01	0	0	<input type="checkbox"/> No Limit	<input type="checkbox"/> No Limit

#### Queue Bandwidth Control Table On Port 1

Queue	Min Rate (Kbit/sec)	Max Rate (Kbit/sec)
0	No Limit	No Limit
1	No Limit	No Limit
2	No Limit	No Limit
3	No Limit	No Limit
4	No Limit	No Limit
5	No Limit	No Limit
6	No Limit	No Limit
7	No Limit	No Limit

#### Queue Bandwidth Control Table On Port 2

Queue	Min Rate (Kbit/sec)	Max Rate (Kbit/sec)
0	No Limit	No Limit

DGS-3120-24TC - Microsoft Internet Explorer provided by D-Link Australia

http://10.90.90.90/www/main.html

D-Link Building Networks for People

Refresh Interval: 10 secs

System Up Time: 00 Days 00:34:28 Logged in as Administrator, Anonymous - 10.90.90.8

### Traffic Control Settings

Traffic Control Settings

Unit: 1

From Port: 01 To Port: 01

Action: Drop

Time Interval (5-600): 0 sec

Countdown (0 or 3-30): 0 min

Threshold (0-255000): 131072 pkt/s

Traffic Control Type: None

Traffic Trap Settings: None

Traffic Log Settings: Enabled

Traffic Auto Recover Time (0-65535): 0 min

DGS-3120-24TC - Microsoft Internet Explorer provided by D-Link Australia

http://10.90.90.90/www/main.html

D-Link Building Networks for People

Refresh Interval: 10 secs

System Up Time: 00 Days 00:34:28 Logged in as Administrator, Anonymous - 10.90.90.8

### Traffic Control Settings

Traffic Control Settings

Unit: 1

From Port: 01 To Port: 01

Action: Drop

Time Interval (5-600): 5 sec

Countdown (0 or 3-30): 0 min

Threshold (0-255000): 131072 pkt/s

Traffic Control Type: **None**

Traffic Trap Settings: **None**

Traffic Log Settings: **None**

Traffic Auto Recover Time (0-65535): 0 min

DGS-3120-24TC - Microsoft Internet Explorer provided by D-Link Australia

http://10.90.90.90/www/main.html

D-Link Building Networks for People

Refresh Interval: 10 secs

System Up Time: 00 Days 00:34:38 Logged in as Administrator, Anonymous - 10.90.90.8

### Traffic Control Settings

Unit: 1

From Port: 01 To Port: 01

Action: Drop

Time Interval (5-600): 5 sec

Countdown (0 or 3-30): 0 min

Threshold (0-255000): 131072 pkt/s

Traffic Control Type: None

Traffic Trap Settings: None

Traffic Log Settings: None

Traffic Auto Recover Time (0-65535): 0 min

Stacking Status: Done

DGS-3120-24TC - Microsoft Internet Explorer provided by D-Link Australia

http://10.90.90.90/www/main.html

D-Link Building Networks for People

Refresh Interval: 10 secs

System Up Time: 00 Days 00:34:59 Logged in as Administrator, Anonymous - 10.90.90.8

### DSCP Trust Settings

Unit: 1

From Port: 01 To Port: 01

State: Disabled

Port	DSCP Trust
1	Disabled
2	Disabled
3	Disabled
4	Disabled
5	Disabled
6	Disabled
7	Disabled
8	Disabled
9	Disabled
10	Disabled
11	Disabled

Stacking Status: Done

DGS-3120-24TC - Microsoft Internet Explorer provided by D-Link Australia

http://10.90.90.90/www/main.html

D-Link Building Networks for People

Refresh Interval: 10 secs

System Up Time: 00 Days 00:34:59 Logged in as Administrator, Anonymous - 10.90.90.8

### DSCP Map Settings

Unit: 1

From Port: 01 To Port: 01

DSCP Map: DSCP Priority

DSCP List (0-63):

Priority: 0

Port	0	1	2	3	4	5	6	7
1	0-7	8-15	16-23	24-31	32-39	40-47	48-55	56-63
2	0-7	8-15	16-23	24-31	32-39	40-47	48-55	56-63
3	0-7	8-15	16-23	24-31	32-39	40-47	48-55	56-63
4	0-7	8-15	16-23	24-31	32-39	40-47	48-55	56-63
5	0-7	8-15	16-23	24-31	32-39	40-47	48-55	56-63
6	0-7	8-15	16-23	24-31	32-39	40-47	48-55	56-63
7	0-7	8-15	16-23	24-31	32-39	40-47	48-55	56-63
8	0-7	8-15	16-23	24-31	32-39	40-47	48-55	56-63
9	0-7	8-15	16-23	24-31	32-39	40-47	48-55	56-63
10	0-7	8-15	16-23	24-31	32-39	40-47	48-55	56-63
11	0-7	8-15	16-23	24-31	32-39	40-47	48-55	56-63

Stacking Status: Done



DGS-3120-24TC - Microsoft Internet Explorer provided by D-Link Australia

http://10.90.90.90/www/main.html

D-Link Building Networks for People

Refresh Interval: 10 secs

System Up Time: 00 Days 00:35:09 Logged in as Administrator, Anonymous - 10.90.90.8 Logout

### HOL Blocking Prevention

HOL Blocking Prevention Global Settings

HOL Blocking Prevention State:  Enabled  Disabled

Apply

Stacking Status: Done

Trusted sites | Protected Mode: Off

DGS-3120-24TC - Microsoft Internet Explorer provided by D-Link Australia

http://10.90.90.90/www/main.html

D-Link Building Networks for People

Refresh Interval: 10 secs

System Up Time: 00 Days 00:35:29 Logged in as Administrator, Anonymous - 10.90.90.8 Logout

### QoS Scheduling

QoS Scheduling Settings

Unit: 1 From Port: 01 To Port: 01 Class ID: Class-0 Scheduling Mechanism: Strict

Apply

QoS Scheduling Table

Port	Class ID	Weight
1	Class-0	1
1	Class-1	2
1	Class-2	3
1	Class-3	4
1	Class-4	5
1	Class-5	6
1	Class-6	7
1	Class-7	8
2	Class-0	1
2	Class-1	2

Stacking Status: Done

Trusted sites | Protected Mode: Off

DGS-3120-24TC - Microsoft Internet Explorer provided by D-Link Australia

http://10.90.90.90/www/main.html

D-Link Building Networks for People

Refresh Interval: 10 secs

System Up Time: 00 Days 00:35:40 Logged in as Administrator, Anonymous - 10.90.90.8 Logout

### QoS Scheduling Mechanism

QoS Scheduling Mechanism Settings

Unit: 1 From Port: 01 To Port: 01 Scheduling Mechanism: Strict

Apply

QoS Scheduling Mechanism Table

Port	Mode
1	Strict
2	Strict
3	Strict
4	Strict
5	Strict
6	Strict
7	Strict
8	Strict
9	Strict
10	Strict

Stacking Status: Done

Trusted sites | Protected Mode: Off

DGS-3120-24TC - Microsoft Internet Explorer provided by D-Link Australia

http://10.90.90.90/www/main.html

D-Link Building Networks for People

Refresh Interval: 10 secs

System Up Time: 00 Days 00:36:00 | Logged in as Administrator, Anonymous - 10.90.90.8 | Logout

### ACL Configuration Wizard

**General ACL Rules**

Type: Normal | Profile Name:

Profile ID (1-768):  | Access ID (1-1536):   Auto Assign

From: Any | To: Any

Action: Permit

Option: Change 1p Priority:  (0-7)

Apply To: Ports:  (e.g. 1:1, 1:4-1:6)

**Note:** The ACL wizard will create the access profile and rule automatically. The access profiles and rules can be manually configured in the Access Profile List.

Apply

DGS-3120-24TC - Microsoft Internet Explorer provided by D-Link Australia

http://10.90.90.90/www/main.html

D-Link Building Networks for People

Refresh Interval: 10 secs

System Up Time: 00 Days 00:36:11 | Logged in as Administrator, Anonymous - 10.90.90.8 | Logout

### Access Profile List

Add ACL Profile | Delete All

Total User Set Rule Entries / Total Used HW Entries / Total Available HW Entries: 0 / 0 / 1536

Profile ID	Profile Name	Profile Type

DGS-3120-24TC - Microsoft Internet Explorer provided by D-Link Australia

http://10.90.90.90/www/main.html

D-Link Building Networks for People

Refresh Interval: 10 secs

System Up Time: 00 Days 00:36:22 | Logged in as Administrator, Anonymous - 10.90.90.8 | Logout

### CPU Access Profile List

CPU Interface Filtering State:  Enabled  Disabled

Add CPU ACL Profile | Delete All

Total Used Rule Entries / Total Unused Rule Entries: 0 / 500

Profile ID	Profile Type

DGS-3120-24TC - Microsoft Internet Explorer provided by D-Link Australia

http://10.90.90.90/www/main.html

D-Link Building Networks for People

System Up Time: 00 Days 00:36:43 Logged in as Administrator, Anonymous - 10.90.90.8

### ACL Finder

The ACL rule finder helps you to identify any rules that have been assigned to a specific port.

Profile ID: Any Unit: All Port: State: Normal

Profile ID	Access ID	Profile Type	Summary	Action
(Empty table)				

DGS-3120-24TC - Microsoft Internet Explorer provided by D-Link Australia

http://10.90.90.90/www/main.html

D-Link Building Networks for People

System Up Time: 00 Days 00:36:53 Logged in as Administrator, Anonymous - 10.90.90.8

### ACL Flow Meter

Profile ID: Access ID (1-1536)

Add View All Delete All

Profile ID	Access ID	Mode
(Empty table)		

DGS-3120-24TC - Microsoft Internet Explorer provided by D-Link Australia

http://10.90.90.90/www/main.html

D-Link Building Networks for People

System Up Time: 00 Days 19:19:21 Logged in as Administrator, Anonymous - 10.90.90.8

### 802.1X Global Settings

Authentication Mode: Disabled Authentication Protocol: RADIUS EAP

Forward EAPOL PDU: Disabled Max User (1-448): Local

RADIUS Authorization: Disabled  No Limit

Apply

DGS-3120-24TC - Microsoft Internet Explorer provided by D-Link Australia

http://10.90.90.90/www/main.html

D-Link Building Networks for People

Refresh Interval: 10 secs

System Up Time: 00 Days 19:19:32 Logged in as Administrator, Anonymous - 10.90.90.8 Logout

### 802.1X Port Settings

802.1X Port Access Control

Unit: 1

From Port: 01 To Port: 01

QuietPeriod (0-65535): 60 sec SuppTimeout (1-65535): 30 sec

ServerTimeout (1-65535): 30 sec MaxReq (1-10): 2 times

TX Period (1-65535): 30 sec ReAuthPeriod (1-65535): 3600 sec

ReAuthentication: Disabled Port Control: Auto

Capability: None Direction: Both

Forward EAPOL PDU: Disabled Max User (1-448): 16  No Limit

Port	AdmDir	OpenCriDir	Port Control	TX Period	Quiet Period	Supp-Timeout	Server-Timeout	MaxReq	ReAuth Period	ReAuth	Capability	Forward EAPOL PDU	Max User
1	Both	Both	Auto	30	60	30	30	2	3600	Disabled	None	Disabled	16
2	Both	Both	Auto	30	60	30	30	2	3600	Disabled	None	Disabled	16
3	Both	Both	Auto	30	60	30	30	2	3600	Disabled	None	Disabled	16
4	Both	Both	Auto	30	60	30	30	2	3600	Disabled	None	Disabled	16
5	Both	Both	Auto	30	60	30	30	2	3600	Disabled	None	Disabled	16
6	Both	Both	Auto	30	60	30	30	2	3600	Disabled	None	Disabled	16
7	Both	Both	Auto	30	60	30	30	2	3600	Disabled	None	Disabled	16
8	Both	Both	Auto	30	60	30	30	2	3600	Disabled	None	Disabled	16
9	Both	Both	Auto	30	60	30	30	2	3600	Disabled	None	Disabled	16

DGS-3120-24TC - Microsoft Internet Explorer provided by D-Link Australia

http://10.90.90.90/www/main.html

D-Link Building Networks for People

Refresh Interval: 10 secs

System Up Time: 00 Days 19:19:52 Logged in as Administrator, Anonymous - 10.90.90.8 Logout

### 802.1X User Settings

802.1X User: Password: Confirm Password:

Note: 802.1X User and Password should be less than 16 characters.

802.1X User Table Total Entries: 0

User Name	Password
-----------	----------

DGS-3120-24TC - Microsoft Internet Explorer provided by D-Link Australia

http://10.90.90.90/www/main.html

D-Link Building Networks for People

System Up Time: 00 Days 19:20:13 | Logged in as Administrator, Anonymous - 10.90.90.8 | Logout

### Guest VLAN Settings

Add Guest VLAN

VLAN Name:

Unit:

Apply Delete

Port	01	02	03	04	05	06	07	08	09	10	11	12	13	14	15	16	17	18	19	20	21	22	23	24
All	<input type="checkbox"/>	<input type="checkbox"/>	<input type="checkbox"/>	<input type="checkbox"/>	<input type="checkbox"/>	<input type="checkbox"/>	<input type="checkbox"/>	<input type="checkbox"/>	<input type="checkbox"/>	<input type="checkbox"/>	<input type="checkbox"/>	<input type="checkbox"/>	<input type="checkbox"/>	<input type="checkbox"/>	<input type="checkbox"/>	<input type="checkbox"/>	<input type="checkbox"/>	<input type="checkbox"/>	<input type="checkbox"/>	<input type="checkbox"/>	<input type="checkbox"/>	<input type="checkbox"/>	<input type="checkbox"/>	<input type="checkbox"/>

Ports:

Current Guest VLAN Ports:

DGS-3120-24TC - Microsoft Internet Explorer provided by D-Link Australia

http://10.90.90.90/www/main.html

D-Link Building Networks for People

System Up Time: 00 Days 19:20:33 | Logged in as Administrator, Anonymous - 10.90.90.8 | Logout

### Authentication RADIUS Server Settings

Index:

Server IP:  (e.g.: 10.90.90.90)

Authentication Port (1-65535):   Default

Accounting Port (1-65535):   Default

Timeout (1-255):  sec  Default

Retransmit (1-20):  times  Default

Key (Max: 32 characters):

Confirm Key:

Apply

Index	IP Address	Auth-Port	Acct-Port	Timeout	Retransmit	Key
1						
2						
3						

DGS-3120-24TC - Microsoft Internet Explorer provided by D-Link Australia

http://10.90.90.90/www/main.html

D-Link Building Networks for People

Refresh Interval: 10 secs

System Up Time: 00 Days 19:20:54 | Logged in as Administrator, Anonymous - 10.90.90.8 | Logout

### RADIUS Accounting Settings

Network  Enabled  Disabled

Shell  Enabled  Disabled

System  Enabled  Disabled

Apply

**Network:** When enabled, the switch will send informational packets to a remote RADIUS server when 802.1X, WAC and JWAC port access control events occur on the switch.

**Shell:** When enabled, the switch will send informational packets to a remote RADIUS server when a user either logs in, logs out or times out on the switch, using the console, Telnet, or SSH.

**System:** When enabled, the switch will send informational packets to a remote RADIUS server when system events occur on the switch, such as a system reset or system boot.

DGS-3120-24TC - Microsoft Internet Explorer provided by D-Link Australia

http://10.90.90.90/www/main.html

D-Link Building Networks for People

Refresh Interval: 10 secs

System Up Time: 00 Days 19:21:30 | Logged in as Administrator, Anonymous - 10.90.90.8 | Logout

### RADIUS Authentication

Clear

ServerIndex	InvalidServerAddr	Identifier	AuthServerAddr	ServerPortNumber	RoundTripTime	AccessRequests	AccessRe
1	0			0	0	0	0
2	0			0	0	0	0
3	0			0	0	0	0



DGS-3120-24TC - Microsoft Internet Explorer provided by D-Link Australia

http://10.90.90.90/www/main.html

D-Link Building Networks for People

Refresh Interval: 10 secs

System Up Time: 00 Days 19:22:12 | Logged in as Administrator, Anonymous - 10.90.90.8 | Logout

**RADIUS Account Client**

Clear

ServerIndex	InvalidServerAddr	Identifier	ServerAddr	ServerPort
1	0			
2	0			
3	0			

Done

DGS-3120-24TC - Microsoft Internet Explorer provided by D-Link Australia

http://10.90.90.90/www/main.html

D-Link Building Networks for People

Refresh Interval: 10 secs

System Up Time: 00 Days 19:22:22 | Logged in as Administrator, Anonymous - 10.90.90.8 | Logout

**RADIUS Account Client**

Clear

RADIUS Account Client Time Interval: 1s OK

ServerPortNumber	RoundTripTime	Requests	Retransmissions	Res
0	0	0	0	
0	0	0	0	
0	0	0	0	

Done



DGS-3120-24TC - Microsoft Internet Explorer provided by D-Link Australia

http://10.90.90.90/www/main.html

D-Link Building Networks for People

Refresh Interval: 10 secs

System Up Time: 00 Days 19:22:32 Logged in as Administrator, Anonymous - 10.90.90.8

RADIUS Account Client

Clear

Client Time Interval: 1s OK

Retransmissions	Responses	MalformedResponses	BadAuthenticators	Pending
0	0	0	0	
0	0	0	0	
0	0	0	0	

Done

Trusted sites | Protected Mode: Off

DGS-3120-24TC - Microsoft Internet Explorer provided by D-Link Australia

http://10.90.90.90/www/main.html

D-Link Building Networks for People

Refresh Interval: 10 secs

System Up Time: 00 Days 19:22:43 Logged in as Administrator, Anonymous - 10.90.90.8

RADIUS Account Client

Clear

PendingRequests	Timeouts	UnknownTypes	PacketsDropped
0	0	0	0
0	0	0	0
0	0	0	0

Done

Trusted sites | Protected Mode: Off

DGS-3120-24TC - Microsoft Internet Explorer provided by D-Link Australia

http://10.90.90.90/www/main.html

D-Link Building Networks for People

Refresh Interval: 10 secs

System Up Time: 00 Days 19:23:04 Logged in as Administrator, Anonymous - 10.90.90.8

### MAC-based Access Control Settings

#### MAC-based Access Control Global Settings

MAC-based Access Control State:  Enabled  Disabled Apply

Method: Local Password: default

RADIUS Authorization: Enabled Local Authorization: Enabled

Trap State: Enabled Log State: Enabled

Max User (1-1000):   No Limit Apply

#### Guest VLAN Settings

VLAN Name:  VID (1-4094):

Member Ports (e.g.: 1-1-1-5, 1-9):  Add Delete

#### Port Settings

Unit	From Port	To Port	State	Mode	Aging Time (1-1440)	Block Time (0-300)	Max User (1-1000)
1	01	01	Disabled	Host-based	1440 min <input type="checkbox"/> Infinite	300 sec	128 <input type="checkbox"/> No Limit

Port	State	Mode	Aging Time (min)	Block Time (sec)	Max User
1	Disabled	Host-based	1440	300	128
2	Disabled	Host-based	1440	300	128

DGS-3120-24TC - Microsoft Internet Explorer provided by D-Link Australia

http://10.90.90.90/www/main.html

D-Link Building Networks for People

Refresh Interval: 10 secs

System Up Time: 00 Days 19:23:14 Logged in as Administrator, Anonymous - 10.90.90.8

### MAC-based Access Control Local Settings

MAC Address:  VLAN Name:  VID (1-4094):

Add Delete by MAC Delete by VLAN Find by MAC Find by VLAN View All

Total Entries: 0

MAC Address	VLAN Name	VID
-------------	-----------	-----

DGS-3120-24TC - Microsoft Internet Explorer provided by D-Link Australia

http://10.90.90.90/www/main.html

D-Link Building Networks for People

Refresh Interval: 10 secs

System Up Time: 00 Days 19:23:25 | Logged in as Administrator, Anonymous - 10.90.90.8 | Logout

### MAC-based Access Control Authentication State

Port List (e.g.: 1:1, 1:5-1:10)

Find  Clear by Port

Total Authenticating Hosts: 0  
 Total Authenticated Hosts: 0  
 Total Blocked Hosts: 0

Port	MAC Address	State	VID	Priority	Aging Time / Block Time

View All Hosts  Clear All Hosts

Done

DGS-3120-24TC - Microsoft Internet Explorer provided by D-Link Australia

http://10.90.90.90/www/main.html

D-Link Building Networks for People

Refresh Interval: 10 secs

System Up Time: 00 Days 19:23:45 | Logged in as Administrator, Anonymous - 10.90.90.8 | Logout

### WAC Global Settings

WAC Global Settings

WAC Global State:  Enabled  Disabled

WAC Settings

Virtual IP:  Method:

Redirection Path:  Clear Redirection Path:  Yes  No

RADIUS Authorization:  Local Authorization:

HTTP(S) Port (1-65535):   HTTP  HTTPS

Done

DGS-3120-24TC - Microsoft Internet Explorer provided by D-Link Australia

http://10.90.90.90/www/main.html

D-Link Building Networks for People

Refresh Interval: 10 secs

System Up Time: 00 Days 19:23:45 | Logged in as Administrator, Anonymous - 10.90.90.8 | Logout

### WAC User Settings

Stack ID: 1

Create User

User Name:  | VLAN Name:  | VID (1-4094):  | Password:  | Confirm Password:

Note: WAC User and Password should be less than 16 characters.

Total Entries: 0

User Name	VLAN Name	VID	Old Password	New Password	Confirm Password
Total Entries: 0					

Stacking Status: Done

DGS-3120-24TC - Microsoft Internet Explorer provided by D-Link Australia

http://10.90.90.90/www/main.html

D-Link Building Networks for People

Refresh Interval: 10 secs

System Up Time: 00 Days 19:23:56 | Logged in as Administrator, Anonymous - 10.90.90.8 | Logout

### WAC Port Settings

Stack ID: 1

Unit: 1

From Port: 01 | To Port: 01

Aging Time (1-1440): 1440 min  Infinite | State: Disabled

Idle Time (1-1440):  min  Infinite | Block Time (0-300): 60 sec

Port	State	Aging Time	Idle Time	Block Time
1	Disabled	1440	Infinite	60
2	Disabled	1440	Infinite	60
3	Disabled	1440	Infinite	60
4	Disabled	1440	Infinite	60
5	Disabled	1440	Infinite	60
6	Disabled	1440	Infinite	60
7	Disabled	1440	Infinite	60
8	Disabled	1440	Infinite	60
9	Disabled	1440	Infinite	60
10	Disabled	1440	Infinite	60
11	Disabled	1440	Infinite	60
12	Disabled	1440	Infinite	60
13	Disabled	1440	Infinite	60
14	Disabled	1440	Infinite	60

Stacking Status: Done



DGS-3120-24TC - Microsoft Internet Explorer provided by D-Link Australia

http://10.90.90.90/www/main.html

D-Link Building Networks for People

Refresh Interval: 10 secs

System Up Time: 00 Days 19:24:48 Logged in as Administrator, Anonymous - 10.90.90.8 Logout

### Port Security Settings

Port Security Trap/Log Settings:  Enabled  Disabled Apply

Port Security System Settings

System Maximum Address (1-3072):   No Limit Apply

Unit	From Port	To Port	Admin State	Lock Address Mode	Max Learning Address (0-3072)
1	01	01	Disabled	Delete on Reset	32

Apply

#### Port Security Port Table

Port	Admin State	Lock Address Mode	Max Learning Address	Edit	View Details
1	Disabled	DeleteOnReset	32	Edit	View Details
2	Disabled	DeleteOnReset	32	Edit	View Details
3	Disabled	DeleteOnReset	32	Edit	View Details
4	Disabled	DeleteOnReset	32	Edit	View Details
5	Disabled	DeleteOnReset	32	Edit	View Details
6	Disabled	DeleteOnReset	32	Edit	View Details
7	Disabled	DeleteOnReset	32	Edit	View Details
8	Disabled	DeleteOnReset	32	Edit	View Details
9	Disabled	DeleteOnReset	32	Edit	View Details
10	Disabled	DeleteOnReset	32	Edit	View Details

Done Trusted sites | Protected Mode: Off 100%

DGS-3120-24TC - Microsoft Internet Explorer provided by D-Link Australia

http://10.90.90.90/www/main.html

D-Link Building Networks for People

Refresh Interval: 10 secs

System Up Time: 00 Days 19:24:58 Logged in as Administrator, Anonymous - 10.90.90.8 Logout

### Port Security VLAN Settings

VLAN Name

VID List (e.g.: 1, 4-6)

Max Learning Address (0-3072):   No Limit Apply

#### Port Security VLAN Table (Only VLANs with limitation are displayed)

VID	VLAN Name	Max Learning Address
-----	-----------	----------------------

Done Trusted sites | Protected Mode: Off 100%

DGS-3120-24TC - Microsoft Internet Explorer provided by D-Link Australia

http://10.90.90.90/www/main.html

D-Link Building Networks for People

Refresh Interval: 10 secs

System Up Time: 00 Days 19:25:08 | Logged in as Administrator, Anonymous - 10.90.90.8 | Logout

Stack ID: 1

### Port Security Entries

Clear Port Security Entries By Port

VLAN Name   VID List (e.g.: 1, 4-6)

Port List (e.g.: 1:1, 1:4-1:6)   All

Find Clear

Show All Clear All

Total Entries: 0

VID	MAC Address	Port	Lock Mode
Total Entries: 0			

Done

DGS-3120-24TC - Microsoft Internet Explorer provided by D-Link Australia

http://10.90.90.90/www/main.html

D-Link Building Networks for People

Refresh Interval: 10 secs

System Up Time: 00 Days 19:25:29 | Logged in as Administrator, Anonymous - 10.90.90.8 | Logout

Stack ID: 1

### ARP Spoofing Prevention Settings

Gateway IP Address  Gateway MAC Address  Ports   All Ports

Apply

Delete All

Total Entries: 0

Gateway IP Address	Gateway MAC Address	Ports
Total Entries: 0		

Done

DGS-3120-24TC - Microsoft Internet Explorer provided by D-Link Australia

http://10.90.90.90/www/main.html

D-Link Building Networks for People

Refresh Interval: 10 secs

System Up Time: 00 Days 19:25:40 Logged in as Administrator, Anonymous - 10.90.90.8

### BPDU Attack Protection

**BPDU Attack Protection Global Settings**

BPDU Attack Protection State:  Enabled  Disabled Apply

Trap State:  Log State:  Apply

Recover Time (60-1000000):  sec  Infinite Apply

Unit:  From Port:  To Port:  State:  Mode:  Apply

Port	State	Mode	Status
1	Disabled	Shutdown	Normal
2	Disabled	Shutdown	Normal
3	Disabled	Shutdown	Normal
4	Disabled	Shutdown	Normal
5	Disabled	Shutdown	Normal
6	Disabled	Shutdown	Normal
7	Disabled	Shutdown	Normal
8	Disabled	Shutdown	Normal
9	Disabled	Shutdown	Normal
10	Disabled	Shutdown	Normal
11	Disabled	Shutdown	Normal
12	Disabled	Shutdown	Normal

DGS-3120-24TC - Microsoft Internet Explorer provided by D-Link Australia

http://10.90.90.90/www/main.html

D-Link Building Networks for People

Refresh Interval: 10 secs

System Up Time: 00 Days 19:26:21 Logged in as Administrator, Anonymous - 10.90.90.8

### Loopback Detection Settings

**Loopback Detection Global Settings**

Loopback Detection State:  Enabled  Disabled Apply

**Loopback Detection Global Settings**

Mode:  Interval (1-32767):  sec

Trap State:  Recover Time (0 or 60-1000000):  sec Apply

Unit:  To Port:  State:  Apply

Port	Loopback Detection State	Loop Status
1	Disabled	Normal
2	Disabled	Normal
3	Disabled	Normal
4	Disabled	Normal
5	Disabled	Normal
6	Disabled	Normal
7	Disabled	Normal
8	Disabled	Normal



DGS-3120-24TC - Microsoft Internet Explorer provided by D-Link Australia

http://10.90.90.90/www/main.html

D-Link Building Networks for People

System Up Time: 00 Days 19:26:42 Logged in as Administrator, Anonymous - 10.90.90.8 Logout

### Traffic Segmentation Settings

Traffic Segmentation Settings

Unit 1 From Port 01 To Port 01

Forward Port List

Ports

Port	Forward Port List
1	1:1-1:24
2	1:1-1:24
3	1:1-1:24
4	1:1-1:24
5	1:1-1:24
6	1:1-1:24
7	1:1-1:24
8	1:1-1:24
9	1:1-1:24
10	1:1-1:24
11	1:1-1:24
12	1:1-1:24
13	1:1-1:24
14	1:1-1:24
15	1:1-1:24
16	1:1-1:24
17	1:1-1:24
18	1:1-1:24
19	1:1-1:24
20	1:1-1:24
21	1:1-1:24
22	1:1-1:24
23	1:1-1:24
24	1:1-1:24

DGS-3120-24TC - Microsoft Internet Explorer provided by D-Link Australia

http://10.90.90.90/www/main.html

D-Link Building Networks for People

System Up Time: 00 Days 19:27:03 Logged in as Administrator, Anonymous - 10.90.90.8 Logout

### NetBIOS Filtering Settings

NetBIOS Filtering (Filter NetBIOS over TCP/IP)

Unit 1

Ports

Extensive NetBIOS Filtering (Filter NetBIOS over 802.2)

Unit 1

Ports

DGS-3120-24TC - Microsoft Internet Explorer provided by D-Link Australia

http://10.90.90.90/www/main.html

D-Link Building Networks for People

Refresh Interval: 10 secs

System Up Time: 00 Days 19:27:13 | Logged in as Administrator, Anonymous - 10.90.90.8 | Logout

### DHCP Server Screening Port Settings

DHCP Server Screening Trap Log State:  Enabled  Disabled

Illegitimate Server Log Suppress Duration:  1 min  5 mins  30 mins

Unit: 1 | From Port: 01 | To Port: 01 | State: Disabled

Port	State
1	Disabled
2	Disabled
3	Disabled
4	Disabled
5	Disabled
6	Disabled
7	Disabled
8	Disabled
9	Disabled
10	Disabled
11	Disabled
12	Disabled
13	Disabled
14	Disabled

DGS-3120-24TC - Microsoft Internet Explorer provided by D-Link Australia

http://10.90.90.90/www/main.html

D-Link Building Networks for People

Refresh Interval: 10 secs

System Up Time: 00 Days 19:27:23 | Logged in as Administrator, Anonymous - 10.90.90.8 | Logout

### DHCP Offer Permit Entry Settings

Server IP Address:

Client's MAC Address:

Ports (e.g.: 1:1-1:3, 1:5):   All Ports

Total Entries: 0

Server IP Address	Client's MAC Address	Port
-------------------	----------------------	------

DGS-3120-24TC - Microsoft Internet Explorer provided by D-Link Australia

http://10.90.90.90/www/main.html

D-Link Building Networks for People

System Up Time: 00 Days 19:27:44 Logged in as Administrator, Anonymous - 10.90.90.8

### Enable Admin

Authentication policy is disabled!

Stacking Status: STACKING STATUS

Trusted sites | Protected Mode: Off

DGS-3120-24TC - Microsoft Internet Explorer provided by D-Link Australia

http://10.90.90.90/www/main.html

D-Link Building Networks for People

System Up Time: 00 Days 19:28:05 Logged in as Administrator, Anonymous - 10.90.90.8

### Enable Admin

This web management is already in admin level.

Stacking Status: STACKING STATUS

Done

Trusted sites | Protected Mode: Off

DGS-3120-24TC - Microsoft Internet Explorer provided by D-Link Australia

http://10.90.90.90/www/main.html

D-Link Building Networks for People

Refresh Interval: 10 secs

System Up Time: 00 Days 19:28:26 | Logged in as Administrator, Anonymous - 10.90.90.8 | Logout

### Authentication Policy Settings

Authentication Policy: Disabled

Response Timeout (0-255): 30 sec

User Attempts (1-255): 3 times

Apply

Stack ID: 1

Done

Trusted sites | Protected Mode: Off

DGS-3120-24TC - Microsoft Internet Explorer provided by D-Link Australia

http://10.90.90.90/www/main.html

D-Link Building Networks for People

Refresh Interval: 10 secs

System Up Time: 00 Days 19:28:36 | Logged in as Administrator, Anonymous - 10.90.90.8 | Logout

### Application Authentication Settings

Application	Login Method List	Enable Method List
Console	default	default
Telnet	default	default
SSH	default	default
HTTP	default	default

Apply

Stack ID: 1

Done

Trusted sites | Protected Mode: Off

DGS-3120-24TC - Microsoft Internet Explorer provided by D-Link Australia

http://10.90.90.90/www/main.html

D-Link Building Networks for People

Refresh Interval: 10 secs

System Up Time: 00 Days 19:28:57 | Logged in as Administrator, Anonymous - 10.90.90.8 | Logout

### Authentication Server Group Settings

Server Group List    Edit Server Group

Group Name (Max: 15 characters)

Total Entries: 4

Group Name	Edit	Delete
radius	<input type="button" value="Edit"/>	<input type="button" value="Delete"/>
tacacs	<input type="button" value="Edit"/>	<input type="button" value="Delete"/>
tacacs+	<input type="button" value="Edit"/>	<input type="button" value="Delete"/>
xtacacs	<input type="button" value="Edit"/>	<input type="button" value="Delete"/>

Stacking Status: Done

DGS-3120-24TC - Microsoft Internet Explorer provided by D-Link Australia

http://10.90.90.90/www/main.html

D-Link Building Networks for People

Refresh Interval: 10 secs

System Up Time: 00 Days 19:29:07 | Logged in as Administrator, Anonymous - 10.90.90.8 | Logout

### Authentication Server Settings

IP Address:     Port (1-65535):

Protocol:     Timeout (1-255):  sec

Key (Max: 254 characters):     Retransmit (1-20):  times   

Total Entries: 0

IP Address	Protocol	Port	Timeout	Key	Retransmit
------------	----------	------	---------	-----	------------

Stacking Status: Done

DGS-3120-24TC - Microsoft Internet Explorer provided by D-Link Australia

http://10.90.90.90/www/main.html

D-Link Building Networks for People

Refresh Interval: 10 secs

System Up Time: 00 Days 19:29:17 | Logged in as Administrator, Anonymous - 10.90.90.8 | Logout

### Login Method Lists Settings

Method List Name (Max: 15 characters)

Priority 1:  Priority 2:

Priority 3:  Priority 4:

Apply

Total Entries: 1

Method List Name	Priority 1	Priority 2	Priority 3	Priority 4		
default	local	----	----	----	Edit	Delete

Done

DGS-3120-24TC - Microsoft Internet Explorer provided by D-Link Australia

http://10.90.90.90/www/main.html

D-Link Building Networks for People

Refresh Interval: 10 secs

System Up Time: 00 Days 19:29:28 | Logged in as Administrator, Anonymous - 10.90.90.8 | Logout

### Enable Method Lists Settings

Method List Name (Max: 15 characters)

Priority 1:  Priority 2:

Priority 3:  Priority 4:

Apply

Total Entries: 1

Method List Name	Priority 1	Priority 2	Priority 3	Priority 4		
default	local_enable	----	----	----	Edit	Delete

Done

DGS-3120-24TC - Microsoft Internet Explorer provided by D-Link Australia

http://10.90.90.90/www/main.html

D-Link Building Networks for People

Refresh Interval: 10 secs

System Up Time: 00 Days 19:29:38 | Logged in as Administrator, Anonymous - 10.90.90.8 | Logout

### Local Enable Password Settings

Old Local Enable Password (Max: 15 characters)

New Local Enable Password

Confirm Local Enable Password

Apply

Stacking Status: Done

Trusted sites | Protected Mode: Off

DGS-3120-24TC - Microsoft Internet Explorer provided by D-Link Australia

http://10.90.90.90/www/main.html

D-Link Building Networks for People

Refresh Interval: 10 secs

System Up Time: 00 Days 19:29:48 | Logged in as Administrator, Anonymous - 10.90.90.8 | Logout

### SSL Settings

**SSL Global Settings**

SSL State:  Enabled  Disabled

Cache Timeout (60-86400):  sec

Note: Web will be disabled if SSL is enabled.

Apply

**SSL Ciphersuite Settings**

RSA with RC4\_128\_MD5:  Enabled  Disabled

RSA with 3DES EDE CBC SHA:  Enabled  Disabled

DHE DSS with 3DES EDE CBC SHA:  Enabled  Disabled

RSA EXPORT with RC4 40 MD5:  Enabled  Disabled

Apply

**SSL Certificate Download**

Server IP Address:

Certificate File Name:

Key File Name:

Download

**Current Certificate**: Loaded with RSA Certificate!

Stacking Status: Done

Trusted sites | Protected Mode: Off

DGS-3120-24TC - Microsoft Internet Explorer provided by D-Link Australia

http://10.90.90.90/www/main.html

D-Link Building Networks for People

Refresh Interval: 10 secs

System Up Time: 00 Days 19:30:09 | Logged in as Administrator, Anonymous - 10.90.90.8 | Logout

### SSH Settings

SSH Server State:  Enabled  Disabled Apply

**SSH Global Settings**

Max Session (1-8):

Connection Timeout (120-600):  sec

Authfail Attempts (2-20):  times

Rekey Timeout:

TCP Port Number (1-65535):  Apply

Stacking Status: STACKING STATUS

Done

DGS-3120-24TC - Microsoft Internet Explorer provided by D-Link Australia

http://10.90.90.90/www/main.html

D-Link Building Networks for People

Refresh Interval: 10 secs

System Up Time: 00 Days 19:30:20 | Logged in as Administrator, Anonymous - 10.90.90.8 | Logout

### SSH Authentication Method and Algorithm Settings

**SSH Authentication Method Settings**

Password  Public Key  Host-based Apply

**Encryption Algorithm**

3DES-CBC  AES128-CBC  AES192-CBC  AES256-CBC  Cast128-CBC

ARC4  Blow-fish-CBC  Twofish128  Twofish192  Twofish256 Apply

**Data Integrity Algorithm**

HMAC-MD5  HMAC-SHA1 Apply

**Public Key Algorithm**

HMAC-RSA  HMAC-DSA Apply

Stacking Status: STACKING STATUS

Done



DGS-3120-24TC - Microsoft Internet Explorer provided by D-Link Australia

http://10.90.90.90/www/main.html

D-Link Building Networks for People

Refresh Interval: 10 secs

System Up Time: 00 Days 19:30:30 Logged in as Administrator, Anonymous - 10.90.90.8 Logout

### SSH User Authentication List

Total Entries: 0

User Name	Authentication Method	Host Name	Host IP
Note: Maximum 8 entries and Host Name should be less than 33 characters.			

Done

DGS-3120-24TC - Microsoft Internet Explorer provided by D-Link Australia

http://10.90.90.90/www/main.html

D-Link Building Networks for People

Refresh Interval: 10 secs

System Up Time: 00 Days 19:30:51 Logged in as Administrator, Anonymous - 10.90.90.8 Logout

### Trusted Host Settings

IPv4 Address  Net Mask  (e.g.: 255.255.255.254 or 1-32)

Access Interface  SNMP  Telnet  SSH  HTTP  HTTPS  Ping  All

Add Delete All

Total Entries: 0

IP Address	Access Interface
Note: Create a list of IPv4 / IPv6 addresses that can access the switch. Your local host IPv4 / IPv6 address must be one of the IPv4 / IPv6 addresses to avoid disconnection.	

Done

DGS-3120-24TC - Microsoft Internet Explorer provided by D-Link Australia

http://10.90.90.90/www/main.html

D-Link Building Networks for People

Refresh Interval: 10 secs

System Up Time: 00 Days 19:31:01 Logged in as Administrator, Anonymous - 10.90.90.8 Logout

### Safeguard Engine Settings

Safeguard Engine State:  Enabled  Disabled

Safeguard Engine Current Status: Normal

#### CPU Utilization Settings

Rising Threshold (20% ~ 100%)	<input type="text" value="30"/> %	Trap / Log	<input type="text" value="Disabled"/>
Falling Threshold (20% ~ 100%)	<input type="text" value="20"/> %	Mode	<input type="text" value="Fuzzy"/>

**Note:** D-Link Safeguard Engine is a robust and innovative technology developed by D-Link that will automatically throttle the impact of packet flooding into the switch's CPU. This feature will keep D-Link Switches better protected from being too frequently interrupted by malicious viruses or worm attacks.

Stacking Status: Done

Trusted sites | Protected Mode: Off

DGS-3120-24TC - Microsoft Internet Explorer provided by D-Link Australia

http://10.90.90.90/www/main.html

D-Link Building Networks for People

Refresh Interval: 10 secs

System Up Time: 00 Days 19:31:33 Logged in as Administrator, Anonymous - 10.90.90.8 Logout

### DHCP Relay Global Settings

DHCP Relay State:

DHCP Relay Hops Count Limit (1-16):

DHCP Relay Time Threshold (0-65535):  sec

DHCP Relay Option 82 State:

DHCP Relay Agent Information Option 82 Check:

DHCP Relay Agent Information Option 82 Policy:

DHCP Relay Agent Information Option 82 Remote ID:   Default

DHCP Relay Option 60 State:

DHCP Relay Option 61 State:

Stacking Status: Done

Trusted sites | Protected Mode: Off

DGS-3120-24TC - Microsoft Internet Explorer provided by D-Link Australia

http://10.90.90.90/www/main.html

D-Link Building Networks for People

Refresh Interval: 10 secs

System Up Time: 00 Days 19:31:43 Logged in as Administrator, Anonymous - 10.90.90.8

Stack ID: 1

DHCP Relay Interface Settings

Interface Name:  (Max: 12 characters)

Server IP:  (e.g.: 10.90.90.90)

Total Entries: 0

Interface Name	Server1	Server2	Server3	Server4

Done

DGS-3120-24TC - Microsoft Internet Explorer provided by D-Link Australia

http://10.90.90.90/www/main.html

D-Link Building Networks for People

Refresh Interval: 10 secs

System Up Time: 00 Days 19:31:53 Logged in as Administrator, Anonymous - 10.90.90.8

Stack ID: 1

DHCP Relay Option 60 Server Settings

Relay IP Address:  (e.g.: 10.90.90.90)

Mode:

Server1	Server2	Server3	Server4

Done

DGS-3120-24TC - Microsoft Internet Explorer provided by D-Link Australia

http://10.90.90.90/www/main.html

D-Link Building Networks for People

Refresh Interval: 10 secs

System Up Time: 00 Days 19:32:04 Logged in as Administrator, Anonymous - 10.90.90.8

Stack ID: 1

DHCP Relay Option 60 Settings

String:  (Max: 255 characters)

Server IP:  (e.g.: 10.90.90.90)

Match Type:

IP Address:

Total Entries: 0

String	Match Type	IP Address

Done

DGS-3120-24TC - Microsoft Internet Explorer provided by D-Link Australia

http://10.90.90.90/www/main.html

D-Link Building Networks for People

System Up Time: 00 Days 19:32:14 Logged in as Administrator, Anonymous - 10.90.90.8

### DHCP Relay Option 61 Settings

DHCP Relay Option 61 Default Settings

DHCP Relay Option 61 Default:  (e.g. 10.90.90.90)

Client ID:  (e.g. 01-11-22-33-44-55)

Relay Rule:  (e.g. 10.90.90.90)

Client ID:

Total Entries: 0

ClientID	Type	Relay Rule
Total Entries: 0		

DGS-3120-24TC - Microsoft Internet Explorer provided by D-Link Australia

http://10.90.90.90/www/main.html

D-Link Building Networks for People

System Up Time: 00 Days 19:32:24 Logged in as Administrator, Anonymous - 10.90.90.8

### DHCP Local Relay Settings

DHCP Local Relay State:  Enabled  Disabled

Configure DHCP Local Relay For VLAN

VLAN Name:  State:

DHCP/BOOTP Local Relay VID List:

DGS-3120-24TC - Microsoft Internet Explorer provided by D-Link Australia

http://10.90.90.90/www/main.html

D-Link Building Networks for People

System Up Time: 00 Days 19:32:45 Logged in as Administrator, Anonymous - 10.90.90.8

### SNTP Settings

Status

SNTP State:  Enabled  Disabled

Current Time: 14/09/2010 10:07:08

Time Source: System Clock

SNTP Settings

SNTP First Server:

SNTP Second Server:

SNTP Poll Interval In Seconds (30-99999):

DGS-3120-24TC - Microsoft Internet Explorer provided by D-Link Australia

http://10.90.90.90/www/main.html

D-Link Building Networks for People

Refresh Interval: 10 secs

System Up Time: 00 Days 19:33:06 | Logged in as Administrator, Anonymous - 10.90.90.8 | Logout

Stack ID: 1

### Time Zone Settings

Daylight Saving Time State: Disabled

Daylight Saving Time Offset in Minutes: 60

Time Zone Offset: From GMT in +/-HH:MM: + 00 : 00

#### DST Repeating Settings

From: Which Week of the Month: First

From: Day of the Week: Sun

From: Month: Apr

From: Time in HH MM: 00 : 00

To: Which Week of the Month: Last

To: Day of the Week: Sun

To: Month: Oct

To: Time in HH MM: 00 : 00

#### DST Annual Settings

From: Month: Apr

From: Day: 29

From: Time in HH MM: 00 : 00

To: Month: Oct

To: Day: 12

To: Time in HH MM: 00 : 00

Stacking Status: Done

Trusted sites | Protected Mode: Off

DGS-3120-24TC - Microsoft Internet Explorer provided by D-Link Australia

http://10.90.90.90/www/main.html

D-Link Building Networks for People

Refresh Interval: 10 secs

System Up Time: 00 Days 19:33:26 | Logged in as Administrator, Anonymous - 10.90.90.8 | Logout

Stack ID: 1

### Flash File System Settings

Current Unit: 1

Current Path:

Root	Media Type	Size (MB)	Label	File System Type
C:	Flash	28		FFS

Stacking Status: Done

Trusted sites | Protected Mode: Off

DGS-3120-24TC - Microsoft Internet Explorer provided by D-Link Australia

http://10.90.90.90/www/main.html

D-Link Building Networks for People

Refresh Interval: 10 secs

System Up Time: 00 Days 19:33:36 | Logged in as Administrator, Anonymous - 10.90.90.8 | Logout

Stack ID: 1

### Cable Diagnostics

Unit: 1 | Port: 01 | Test

Port	Type	Link Status	Test Result	Cable Length (M)
1	GE	Link Down	No Cable	-

The cable diagnostics feature is designed primarily for administrators or customer service representatives to verify and test copper cables; it can rapidly determine the quality of the cables and the types of error.

**Note:**

1. If cable length is displayed as "NA" it means the cable length is "Not Available". This is due to the port being unable to obtain cable length/either because its link partner is powered-off, or the cables used are broken and/or bad in quality.
2. The maximum cable length is limited to 120 meters.
3. The accuracy is +/-5 meters, therefore "No Cable" may be displayed under "Test Result", when the length of cable is less than 5 meters.
4. It also measures cable fault and identifies the fault in length according to the distance from this switch.

Stacking Status: Done

DGS-3120-24TC - Microsoft Internet Explorer provided by D-Link Australia

http://10.90.90.90/www/main.html

D-Link Building Networks for People

Refresh Interval: 10 secs

System Up Time: 00 Days 19:34:59 | Logged in as Administrator, Anonymous - 10.90.90.8 | Logout

Stack ID: 1

### CPU Utilization

Utilization - CPU

Five Secs: 10%  
One Min: 9%  
Five Mins: 10%

Unit: (%)

Time Interval: 1s | Record Number: 200 | Apply

Show/Hide:  Five Secs  One Min  Five Mins

Stacking Status: Done

DGS-3120-24TC - Microsoft Internet Explorer provided by D-Link Australia

http://10.90.90.90/www/main.html

D-Link Building Networks for People

Refresh Interval: 10 secs

System Up Time: 00 Days 19:35:19 | Logged in as Administrator, Anonymous - 10.90.90.8 | Logout

Stack ID: 1

### DRAM & Flash Utilization

DRAM	
Total DRAM	131072 KB
Used DRAM	129672 KB
Utilization	98%

Flash	
Total Flash	29618 KB
Used Flash	4860 KB
Utilization	16%

Stacking Status: Done

DGS-3120-24TC - Microsoft Internet Explorer provided by D-Link Australia

http://10.90.90.90/www/main.html

D-Link Building Networks for People

Refresh Interval: 10 secs

System Up Time: 00 Days 19:35:50 Logged in as Administrator, Anonymous - 10.90.90.8 Logout

Stack ID: 1

Port Utilization

Unit: 1 Port: 03

Utilization - Port: 03

Utilization 1%

Time Interval: 1s Record Number: 200

Show/Hide:  Utilization

Stacking Status: Done

DGS-3120-24TC - Microsoft Internet Explorer provided by D-Link Australia

http://10.90.90.90/www/main.html

D-Link Building Networks for People

Refresh Interval: 10 secs

System Up Time: 00 Days 19:36:32 Logged in as Administrator, Anonymous - 10.90.90.8 Logout

Stack ID: 1

Received(RX)

Unit: 1 Port: 03

RX Packets Analysis - Port: 3

Bytes: 10578  
Packets: 11

K: 1000(Packets/sec or Bytes/sec)

Time Interval: 1s Record Number: 200

Show/Hide:  Bytes  Packets

Stacking Status: Done

DGS-3120-24TC - Microsoft Internet Explorer provided by D-Link Australia

http://10.90.90.90/www/main.html

D-Link Building Networks for People

System Up Time: 00 Days 19:36:52 Logged in as Administrator, Anonymous - 10.90.90.8 Logout

Stack ID 1

UMB\_Cast(RX)

Unit: 1 Port: 03 View Table Apply Clear

RX Packets Analysis - Port: 3

Unicast	8
Multicast	0
Broadcast	0

Unit (Packets/sec)

Time Interval: 1s Record Number: 200 Apply

Show/Hide:  Unicast  Multicast  Broadcast

Stacking Status

Trusted sites | Protected Mode: Off

DGS-3120-24TC - Microsoft Internet Explorer provided by D-Link Australia

http://10.90.90.90/www/main.html

D-Link Building Networks for People

System Up Time: 00 Days 19:37:13 Logged in as Administrator, Anonymous - 10.90.90.8 Logout

Stack ID 1

Transmitted(TX)

Unit: 1 Port: 03 View Table Apply Clear

TX Packets Analysis - Port: 3

Bytes	10381
Packets	8

K: 1000(Packets/sec or Bytes/sec)

Time Interval: 1s Record Number: 200 Apply

Show/Hide:  Bytes  Packets

Done

Trusted sites | Protected Mode: Off



DGS-3120-24TC - Microsoft Internet Explorer provided by D-Link Australia

http://10.90.90.90/www/main.html

D-Link Building Networks for People

Refresh Interval: 10 secs

System Up Time: 00 Days 19:37:33 | Logged in as Administrator, Anonymous - 10.90.90.8 | Logout

Stack ID: 1

Transmitted(TX) Table

Unit: 1 | Port: 03 | View Graphic | Apply | Clear

Port: 3 | 1s | OK

RX Packets	Total	Total/sec
Bytes	12622587	10574
Packets	65661	14

RX Packets	Total	Total/sec
Unicast	32781	14
Multicast	3491	0
Broadcast	29389	0

TX Packets	Total	Total/sec
Bytes	40978757	13131
Packets	42870	9

Stacking Status: Done

Trusted sites | Protected Mode: Off

DGS-3120-24TC - Microsoft Internet Explorer provided by D-Link Australia

http://10.90.90.90/www/main.html

D-Link Building Networks for People

Refresh Interval: 10 secs

System Up Time: 00 Days 19:38:15 | Logged in as Administrator, Anonymous - 10.90.90.8 | Logout

Stack ID: 1

Received(RX)

Unit: 1 | Port: 03 | View Table | Apply | Clear

RX Error Analysis - Port: 3

CRCErr	0
UnderSize	0
OverSize	0
Fragment	0
Jabber	0
Drop	26385
SymbolErr	0

Time Interval: 1s | Record Number: 200 | Apply

Show/Hide:  CRCErr  UnderSize  OverSize  Fragment  
 Jabber  Drop  SymbolErr

Stacking Status: Done

Trusted sites | Protected Mode: Off

DGS-3120-24TC - Microsoft Internet Explorer provided by D-Link Australia

http://10.90.90.90/www/main.html

D-Link Building Networks for People

Refresh Interval: 10 secs

System Up Time: 00 Days 19:38:45 | Logged in as Administrator, Anonymous - 10.90.90.8 | Logout

Stack ID: 1

Transmitted (TX)

Unit: 1 Port: 03 View Table Apply Clear

TX Error Analysis - Port: 3

Unit (Packets)

Time Interval: 1s Record Number: 200 Apply

Show/Hide:  ExDefer  CRCError  LateColl  ExColl  SingColl  Collision

Stacking Status: Done

Trusted sites | Protected Mode: Off

DGS-3120-24TC - Microsoft Internet Explorer provided by D-Link Australia

http://10.90.90.90/www/main.html

D-Link Building Networks for People

Refresh Interval: 10 secs

System Up Time: 00 Days 19:39:16 | Logged in as Administrator, Anonymous - 10.90.90.8 | Logout

Stack ID: 1

Packet Size

Unit: 1 Port: 03 View Table Apply Clear

Packet Size Analysis - Port: 3

Unit (packets/sec)

Time Interval: 1s Record Number: 200 Apply

Show/Hide:  64  65-127  128-255  256-511  512-1023  1024-1518

Stacking Status: Done

Trusted sites | Protected Mode: Off

DGS-3120-24TC - Microsoft Internet Explorer provided by D-Link Australia

http://10.90.90.90/www/main.html

D-Link Building Networks for People

Refresh Interval: 10 secs

System Up Time: 00 Days 19:39:37 Logged in as Administrator, Anonymous - 10.90.90.8

### Port Mirror Settings

Target Port Settings

State:  Enabled  Disabled

Target Port: 1

Source Port: Sniffer Mode Ports

Source Port Settings

Unit: 1

Sniffer Mode	01	02	03	04	05	06	07	08	09	10	11	12	13	14	15	16	17	18	19	20	21	22	23	24
TX	<input type="checkbox"/>	<input type="checkbox"/>	<input type="checkbox"/>	<input type="checkbox"/>	<input type="checkbox"/>	<input type="checkbox"/>	<input type="checkbox"/>	<input type="checkbox"/>	<input type="checkbox"/>	<input type="checkbox"/>	<input type="checkbox"/>	<input type="checkbox"/>	<input type="checkbox"/>	<input type="checkbox"/>	<input type="checkbox"/>	<input type="checkbox"/>	<input type="checkbox"/>	<input type="checkbox"/>	<input type="checkbox"/>	<input type="checkbox"/>	<input type="checkbox"/>	<input type="checkbox"/>	<input type="checkbox"/>	<input type="checkbox"/>
RX	<input type="checkbox"/>	<input type="checkbox"/>	<input type="checkbox"/>	<input type="checkbox"/>	<input type="checkbox"/>	<input type="checkbox"/>	<input type="checkbox"/>	<input type="checkbox"/>	<input type="checkbox"/>	<input type="checkbox"/>	<input type="checkbox"/>	<input type="checkbox"/>	<input type="checkbox"/>	<input type="checkbox"/>	<input type="checkbox"/>	<input type="checkbox"/>	<input type="checkbox"/>	<input type="checkbox"/>	<input type="checkbox"/>	<input type="checkbox"/>	<input type="checkbox"/>	<input type="checkbox"/>	<input type="checkbox"/>	<input type="checkbox"/>
Both	<input type="checkbox"/>	<input type="checkbox"/>	<input type="checkbox"/>	<input type="checkbox"/>	<input type="checkbox"/>	<input type="checkbox"/>	<input type="checkbox"/>	<input type="checkbox"/>	<input type="checkbox"/>	<input type="checkbox"/>	<input type="checkbox"/>	<input type="checkbox"/>	<input type="checkbox"/>	<input type="checkbox"/>	<input type="checkbox"/>	<input type="checkbox"/>	<input type="checkbox"/>	<input type="checkbox"/>	<input type="checkbox"/>	<input type="checkbox"/>	<input type="checkbox"/>	<input type="checkbox"/>	<input type="checkbox"/>	<input type="checkbox"/>
None	<input checked="" type="checkbox"/>	<input checked="" type="checkbox"/>	<input checked="" type="checkbox"/>	<input checked="" type="checkbox"/>	<input checked="" type="checkbox"/>	<input checked="" type="checkbox"/>	<input checked="" type="checkbox"/>	<input checked="" type="checkbox"/>	<input checked="" type="checkbox"/>	<input checked="" type="checkbox"/>	<input checked="" type="checkbox"/>	<input checked="" type="checkbox"/>	<input checked="" type="checkbox"/>	<input checked="" type="checkbox"/>	<input checked="" type="checkbox"/>	<input checked="" type="checkbox"/>	<input checked="" type="checkbox"/>	<input checked="" type="checkbox"/>	<input checked="" type="checkbox"/>	<input checked="" type="checkbox"/>	<input checked="" type="checkbox"/>	<input checked="" type="checkbox"/>	<input checked="" type="checkbox"/>	<input checked="" type="checkbox"/>
TX	<input type="checkbox"/>	<input type="checkbox"/>	<input type="checkbox"/>	<input type="checkbox"/>	<input type="checkbox"/>	<input type="checkbox"/>	<input type="checkbox"/>	<input type="checkbox"/>	<input type="checkbox"/>	<input type="checkbox"/>	<input type="checkbox"/>	<input type="checkbox"/>	<input type="checkbox"/>	<input type="checkbox"/>	<input type="checkbox"/>	<input type="checkbox"/>	<input type="checkbox"/>	<input type="checkbox"/>	<input type="checkbox"/>	<input type="checkbox"/>	<input type="checkbox"/>	<input type="checkbox"/>	<input type="checkbox"/>	<input type="checkbox"/>
RX	<input type="checkbox"/>	<input type="checkbox"/>	<input type="checkbox"/>	<input type="checkbox"/>	<input type="checkbox"/>	<input type="checkbox"/>	<input type="checkbox"/>	<input type="checkbox"/>	<input type="checkbox"/>	<input type="checkbox"/>	<input type="checkbox"/>	<input type="checkbox"/>	<input type="checkbox"/>	<input type="checkbox"/>	<input type="checkbox"/>	<input type="checkbox"/>	<input type="checkbox"/>	<input type="checkbox"/>	<input type="checkbox"/>	<input type="checkbox"/>	<input type="checkbox"/>	<input type="checkbox"/>	<input type="checkbox"/>	<input type="checkbox"/>

Apply

DGS-3120-24TC - Microsoft Internet Explorer provided by D-Link Australia

http://10.90.90.90/www/main.html

D-Link Building Networks for People

Refresh Interval: 10 secs

System Up Time: 00 Days 19:39:47 Logged in as Administrator, Anonymous - 10.90.90.8

### RSPAN Settings

RSPAN Global Settings

RSPAN State:  Enabled  Disabled

VLAN Name: (Max: 32 characters)

VID (1-4094):

Total Entries: 0

VID	RX Source Ports	TX Source Ports	Redirect Ports

DGS-3120-24TC - Microsoft Internet Explorer provided by D-Link Australia

http://10.90.90.90/www/main.html

D-Link Building Networks for People

Refresh Interval: 10 secs

System Up Time: 00 Days 19:40:08 | Logged in as Administrator, Anonymous - 10.90.90.8 | Logout

Stack ID: 1

**Ping Test**

IPv4 Ping Test:

Enter the IP address of the device or station you want to ping, then click Start.

Target IP Address:

Repeat Pinging for:

Infinite times  
  (1-255 times)

Timeout:  (1-99 sec)

Stacking Status: Done

Trusted sites | Protected Mode: Off

DGS-3120-24TC - Microsoft Internet Explorer provided by D-Link Australia

http://10.90.90.90/www/main.html

D-Link Building Networks for People

Refresh Interval: 10 secs

System Up Time: 00 Days 19:40:39 | Logged in as Administrator, Anonymous - 10.90.90.8 | Logout

Stack ID: 1

**Ping Test Result**

**Results**

```
Reply from 10.90.90.8: time<10ms
Reply from 10.90.90.8: time<10ms
Reply from 10.90.90.8: time<10ms
Reply from 10.90.90.8: time<10ms
Reply from 10.90.90.8: time<10ms
Reply from 10.90.90.8: time<10ms
Ping Statistics for 10.90.90.8
Packets: Sent = 5, Received = 5, Lost = 0
```

[Return to Ping Test screen](#)

Stacking Status: Done

Trusted sites | Protected Mode: Off

DGS-3120-24TC - Microsoft Internet Explorer provided by D-Link Australia

http://10.90.90.90/www/main.html

D-Link Building Networks for People

Refresh Interval: 10 secs

System Up Time: 00 Days 19:40:50 | Logged in as Administrator, Anonymous - 10.90.90.8 | Logout

Stack ID: 1

Trace Route

IPv4 Trace Route:  
Enter the IP Address of the device or station that you want to trace the route to and click Start.

IPv4 Address:

TTL (1-60):

Port (30000-64900):

Timeout (1-65535):  sec

Probe (1-9):

Stacking Status: Done

Trusted sites | Protected Mode: Off

DGS-3120-24TC - Microsoft Internet Explorer provided by D-Link Australia

http://10.90.90.90/www/main.html

D-Link Building Networks for People

Refresh Interval: 10 secs

System Up Time: 00 Days 19:41:01 | Logged in as Administrator, Anonymous - 10.90.90.8 | Logout

Stack ID: 1

Device Environment

Items	Data
High Warning Temperature Threshold (celsius)	79
Low Warning Temperature Threshold (celsius)	11
Unit	1
Internal Power	Active
External Power	Fail
Right Fan 1	Speed Low (3000 RPM)
Right Fan 2	Speed Low (3000 RPM)
Current Temperature(celsius)	27
Fan High Temperature Threshold (celsius)	40
Fan Low Temperature Threshold (celsius)	35

Stacking Status: Done

Trusted sites | Protected Mode: Off