

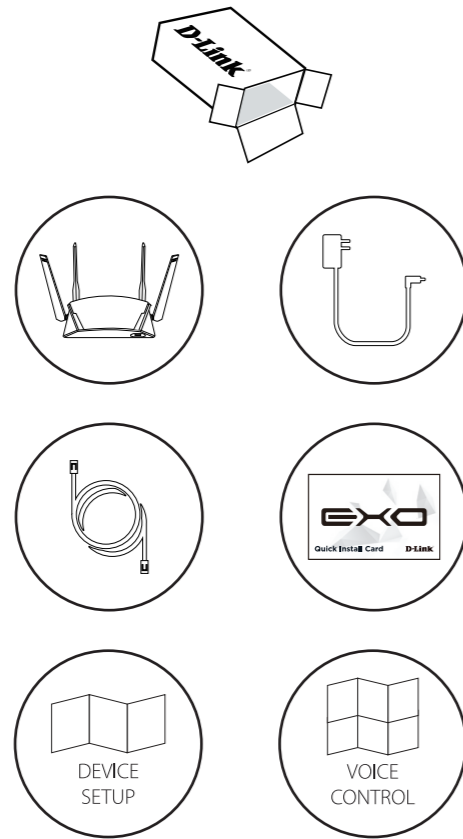


AC1900 Smart Mesh  
Wi-Fi Router



Simple **Setup** Guide

DIR-1960

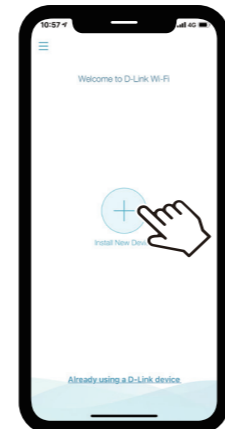


1



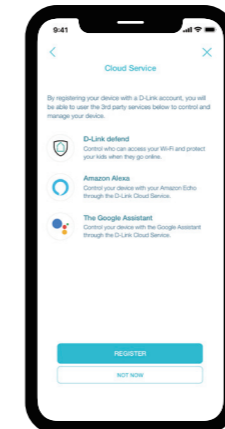
Scan the QR code above to download the D-Link Wi-Fi app for your compatible device.

2



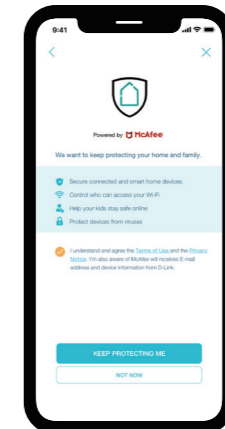
Tap **Install New Device**. Scan the QR code in the Quick Install Card. Follow the on-screen instructions to proceed with setup.

3



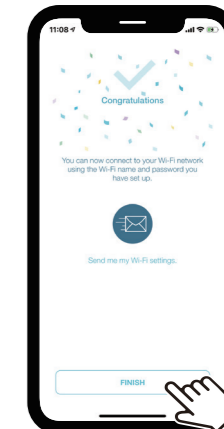
Tap **Register** to sign up for a D-Link Cloud Services account in order to utilize available third party services, or tap **Not Now** and proceed to step 5.

4



Agree to the Terms of Service and Privacy Notice and tap **Keep Protecting Me** to use D-Link defend, or tap **Not Now** to continue.

5



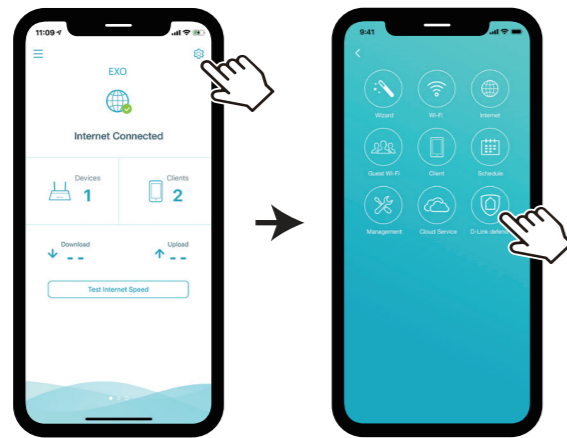
You can now connect to your Wi-Fi network using the Wi-Fi name and password created during the setup. Tap **Finish** to end setup.




# D-Link defend Setup Guide



1



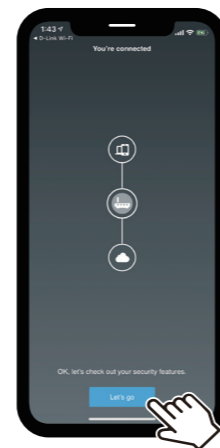
On the home screen tap  then tap on the D-Link defend icon.

2



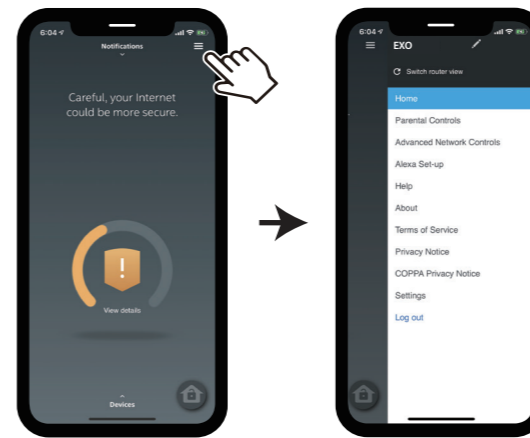
Tap **Download App**. After D-Link defend is installed, return to the D-Link Wi-Fi app. Repeat step 1 to launch D-Link defend.

3



Tap **Let's Go** and follow the on-screen tips to make your Internet more secure.

4



Tap  on the home screen for more features such as Parental Controls and Alexa setup instructions.

## GPL Code Statement

This D-Link product includes software code developed by third parties, including software code subject to the GNU General Public License ("GPL") or GNU Lesser General Public License ("LGPL"). As applicable, the terms of the GPL and LGPL, and information on obtaining access to the GPL code and LGPL code used in this product, are available to view the full GPL Code Statement at:

<https://tsd.dlink.com.tw/GPL>

The GPL code and LGPL code used in this product is distributed WITHOUT ANY WARRANTY and is subject to the copyrights of one or more authors. For details, see the GPL code and the LGPL code for this product and the terms of the GPL and LGPL.

### Written Offer for GPL and LGPL Source Code

Where such specific license terms entitle you to the source code of such software, D-Link will provide upon written request via email and/or traditional paper mail the applicable GPL and LGPL source code files via CD-ROM for a nominal cost to cover shipping and media charges as allowed under the GPL and LGPL.

Please direct all inquiries to:

**Email:**  
GPLCODE@dlink.com

**Snail Mail:**  
Attn: GPLSOURCE REQUEST  
D-Link Systems, Inc.  
17595 Mt. Herrmann Street  
Fountain Valley, CA 92708

## Technical Support

Australia:  
Tel: 1300-700-100  
24/7 Technical Support  
Web: <http://www.dlink.com.au>  
E-mail: [support@dlink.com.au](mailto:support@dlink.com.au)

New Zealand:  
Tel: 0800-900-900  
24/7 Technical Support  
Web: <http://www.dlink.co.nz>  
E-mail: [support@dlink.co.nz](mailto:support@dlink.co.nz)

India:  
Tel: +91-832-2856000 or  
1860-233-3999  
Web: [www.dlink.co.in](http://www.dlink.co.in)  
E-Mail: [helpdesk@in.dlink.com](mailto:helpdesk@in.dlink.com)

Singapore, Thailand, Indonesia,  
Malaysia, Philippines, Vietnam:  
Singapore - [www.dlink.com.sg](http://www.dlink.com.sg)  
Thailand - [www.dlink.co.th](http://www.dlink.co.th)  
Indonesia - [www.dlink.co.id](http://www.dlink.co.id)  
Malaysia - [www.dlink.com.my](http://www.dlink.com.my)  
Philippines - [www.dlink.com.ph](http://www.dlink.com.ph)  
Vietnam - [www.dlink.com.vn](http://www.dlink.com.vn)

D-Link Middle East - Dubai, U.A.E.  
Plot No. 531102,  
Jebel Ali Free Zone South,  
P.O.Box 18224, Dubai, U.A.E.  
Tel: +971-4-8809022  
Fax: +971-4-8809066 / 8809069  
Technical Support:  
+971-4-8809033  
General Inquiries:  
[info.me@me.dlink.com](mailto:info.me@me.dlink.com)  
Tech Support:  
[support.me@me.dlink.com](mailto:support.me@me.dlink.com)