

SharePort™ NETWORK USB UTILITY

USER MANUAL

DIR-825

RELEASE 1.00



D-Link®

WIRELESS

Table of Contents

D-Link® SharePort	3
Introduction.....	3
System Requirements	3
Installation	4
Install the D-Link Network USB Utility	4
Set up the D-Link Router	4
Enable Network USB on the D-Link Router.....	5
Connect USB Devices to the D-Link Router.....	5
Open the D-Link Network USB Utility	6
Virtually Connect and Disconnect a USB Device	7
When the USB Device is a Multifunction Printer	8
When You want to Scan	10

D-Link® SharePort

Introduction

The D-Link SharePort technology will allow you to connect a multi-function printer (MFP), scanner, or USB storage device to your router and share the device with multiple computers*. Only these devices will be supported.

Install the software on the computer(s) you would like to use the USB device with. Remember that the computer(s) will also need the device drivers installed.


** The device can only be used by one computer at a time.*

System Requirements



- Windows® 2000/2003/XP/Vista® 32-bit
- Pentium 3 800GHz or better
- 256MB RAM or higher
- CD-ROM drive

Installation

Install the D-Link Network USB Utility



1. Insert the CD-ROM into your computer.
2. Follow the on-screen instructions.
3. The  icon should appear in the System Tray at the lower-right corner on the desktop.

Set up the D-Link Router

1. Connect the D-Link Router to the network.
2. Power on the D-Link Router.
3. Double-click on the  icon to open the D-Link Network USB Utility
4. Right-click on  in the System Tray at the lower-right corner on your Windows Desktop. A window pops up to display the D-Link Router.



Enable Network USB on the D-Link Router

1. Click on the D-Link Router.
2. Click on **Enable**.
3. The  icon in the Windows System Tray should become the  icon.




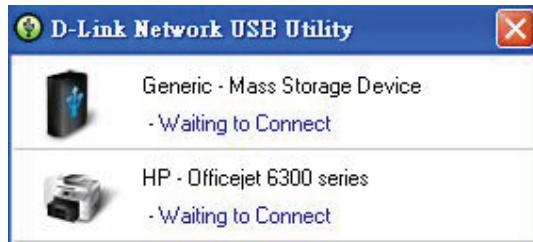
Connect USB Devices to the D-Link Router

The D-Link USB Utility automatically detects for each connected USB device. A window will pop up for each detected USB device.

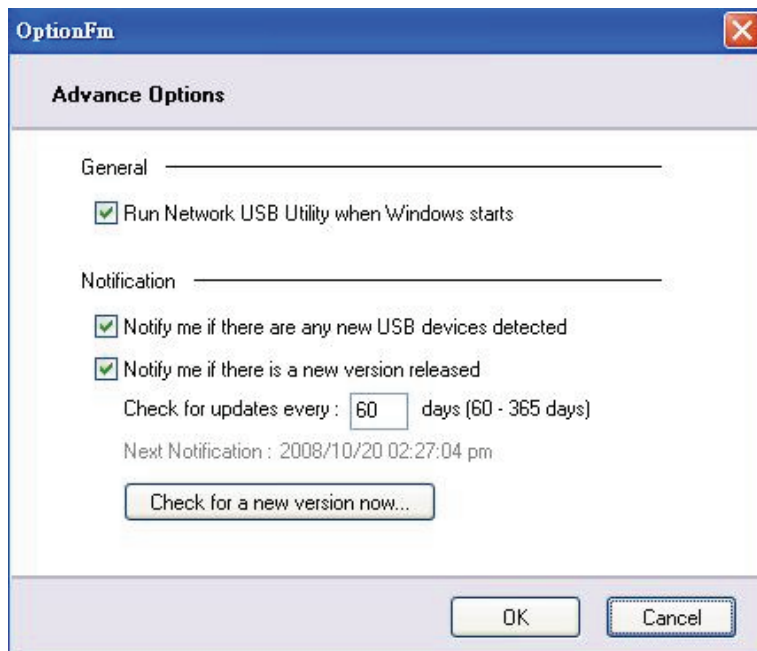


Open the D-Link Network USB Utility

1. Right-click on the  icon.
2. Click on **Open Network USB Utility**.
3. The D-Link Network USB Utility displays the connected USB devices on the network.



Advanced Options can be set by clicking on Advanced Options.



Virtually Connect and Disconnect a USB Device

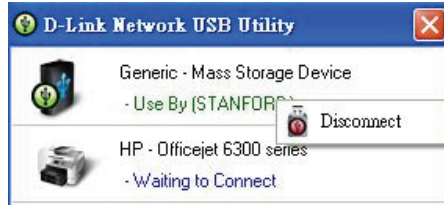
Move the cursor to **Waiting to Connect** and click on **Connect** to virtually connect a USB device.



The D-Link Network USB Utility displays which user is virtually connecting this USB device.

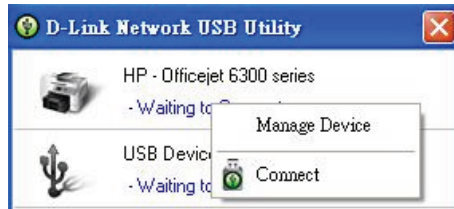


Move the cursor to **Use By (Owner)** and click on **Disconnect** to virtually disconnect the USB device.

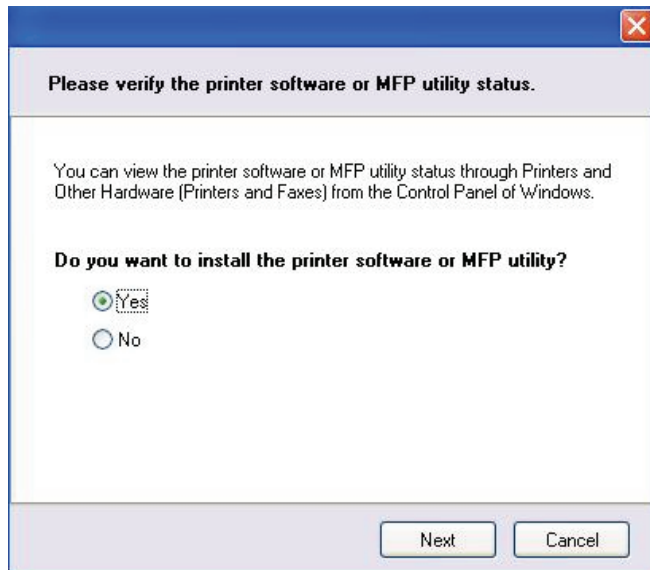


When the USB Device is a Multifunction Printer

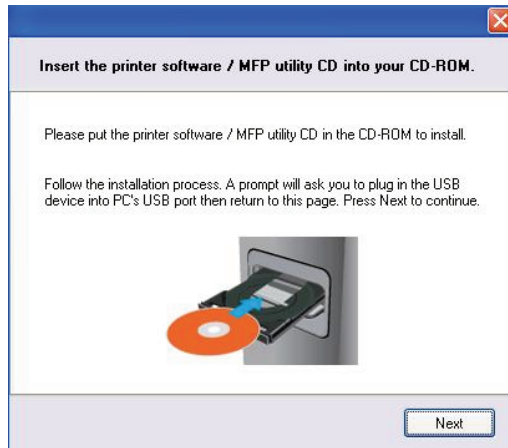
1. Move the cursor to **Waiting to Connect** and click on **Manage Device**.



2. Click **Yes** on the question “Do you want to install the printer software or MFP utility?”



3. Insert the CD-ROM of the multifunction printer and follow the instructions to install the multifunction printer's driver. When the installation process prompts you to connect the multifunction printer to your PC, click **Next**.



4. The D-Link Network USB Utility virtually connects to this multifunction printer. Click **Next**.



5. Choose the printer driver that you want D-Link Network USB Utility to auto-connect when you print.



When You want to Scan

Move the cursor to **Available for Use** and click on **Scan Now**.

