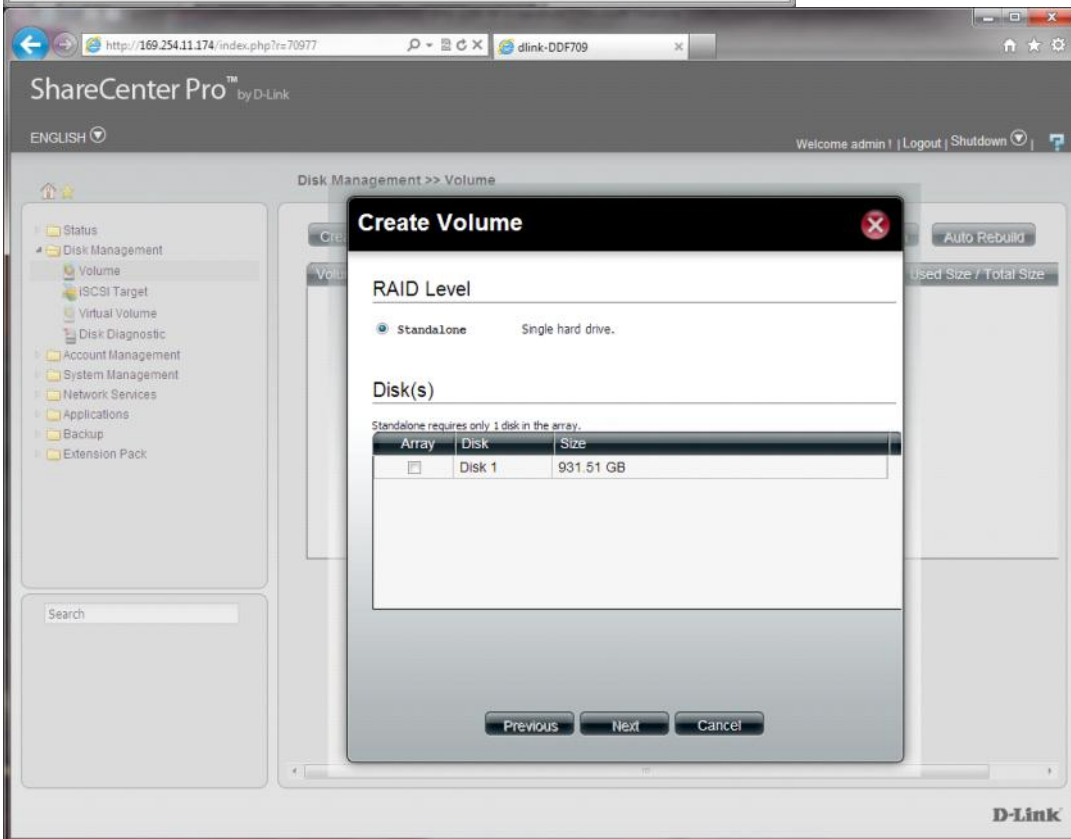
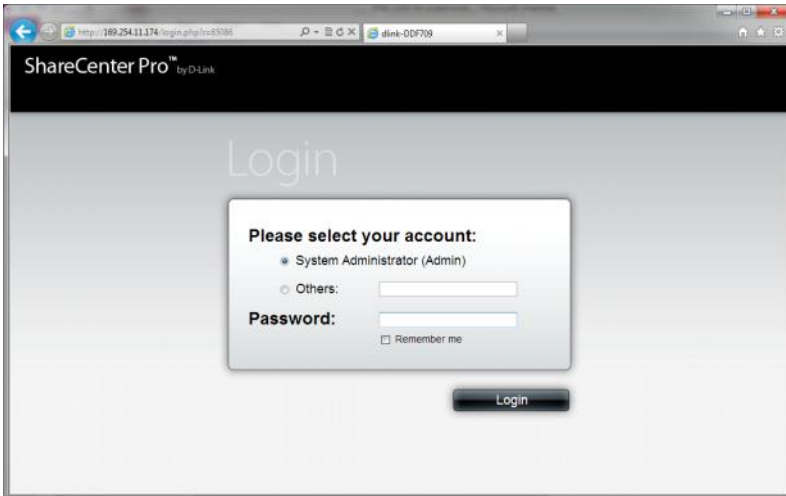
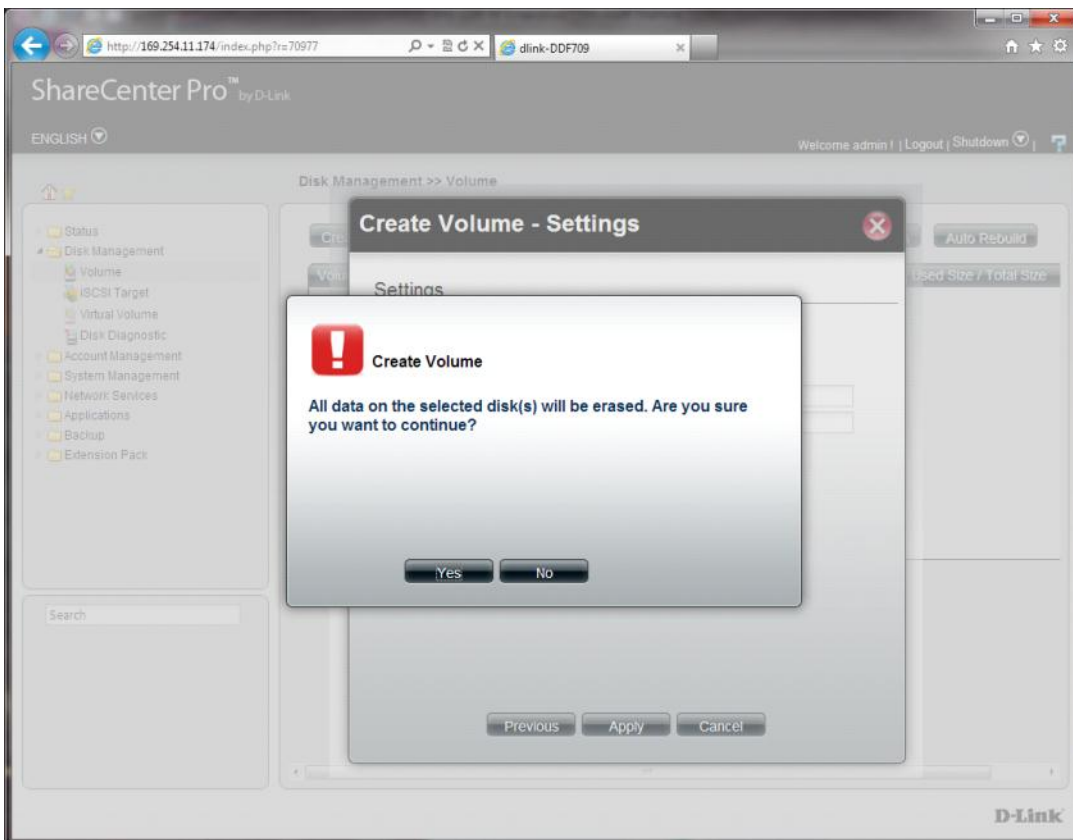
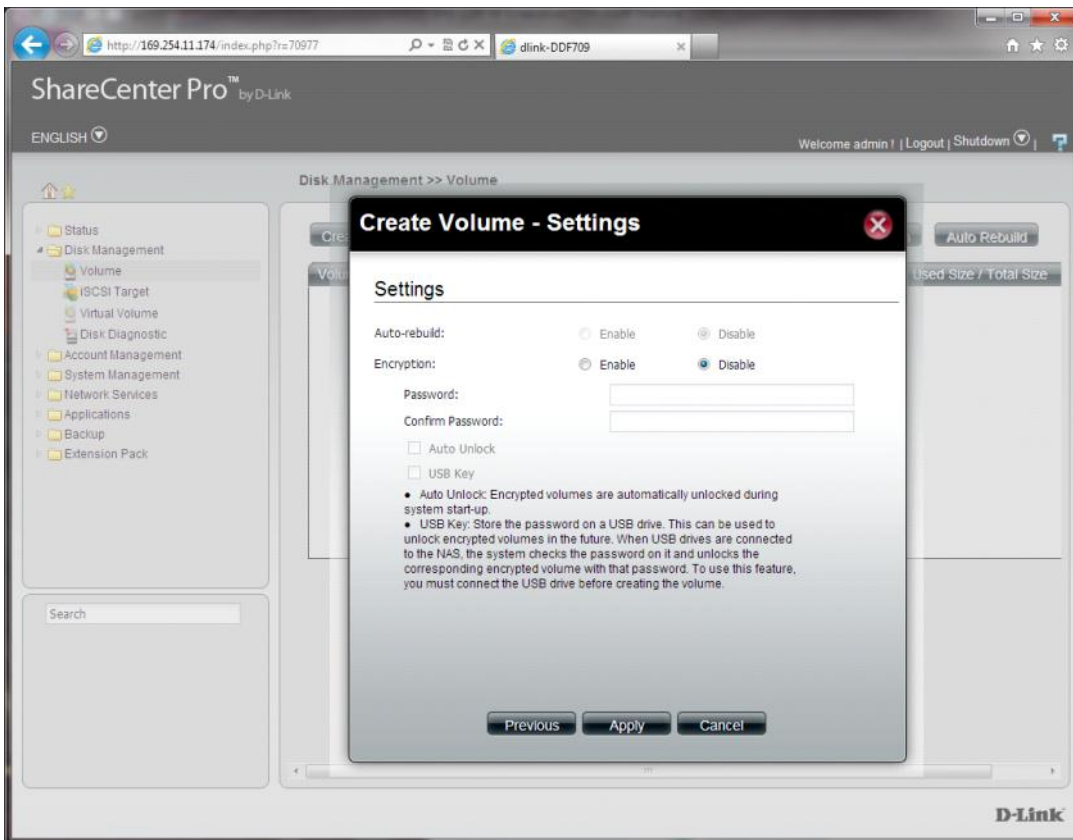


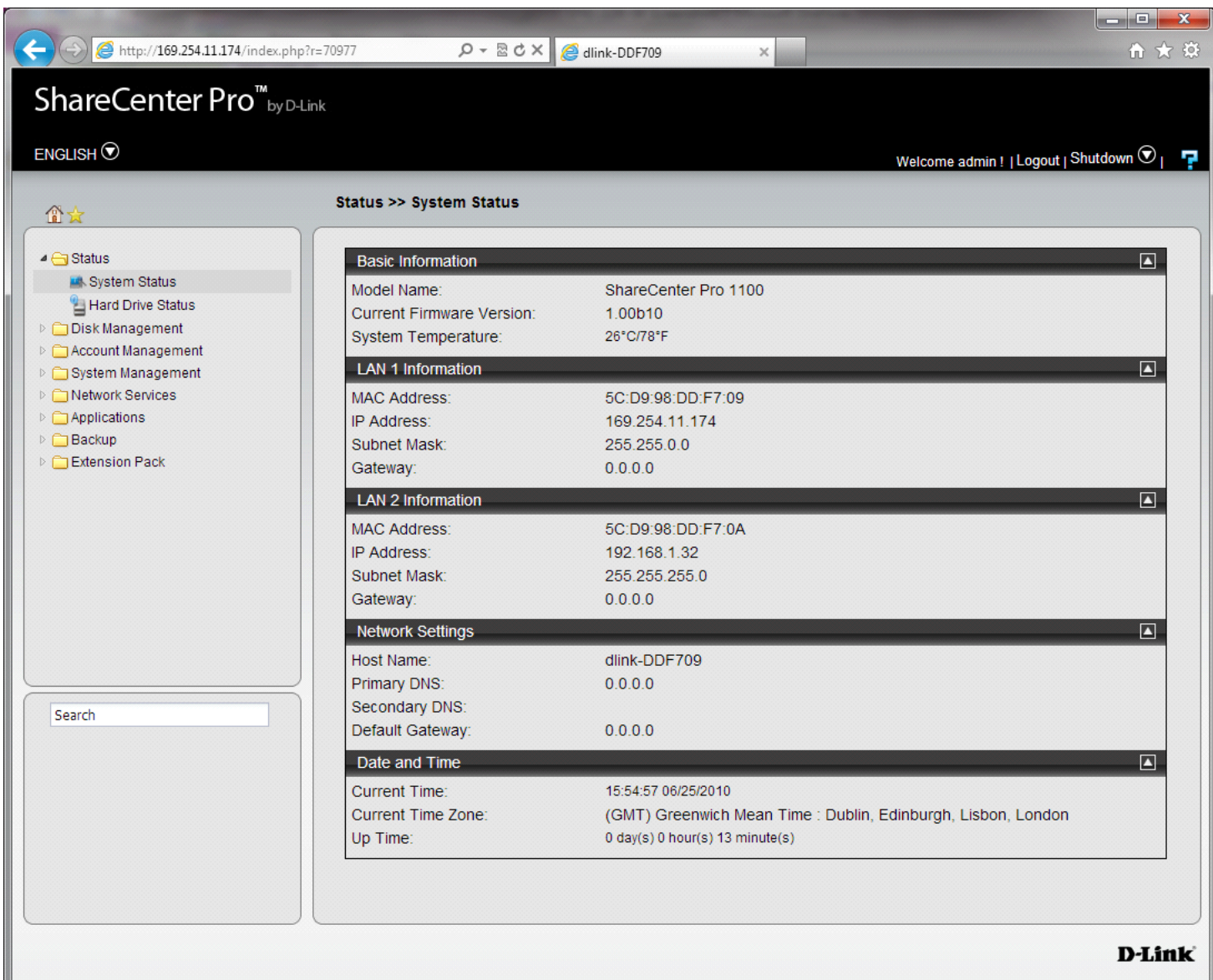
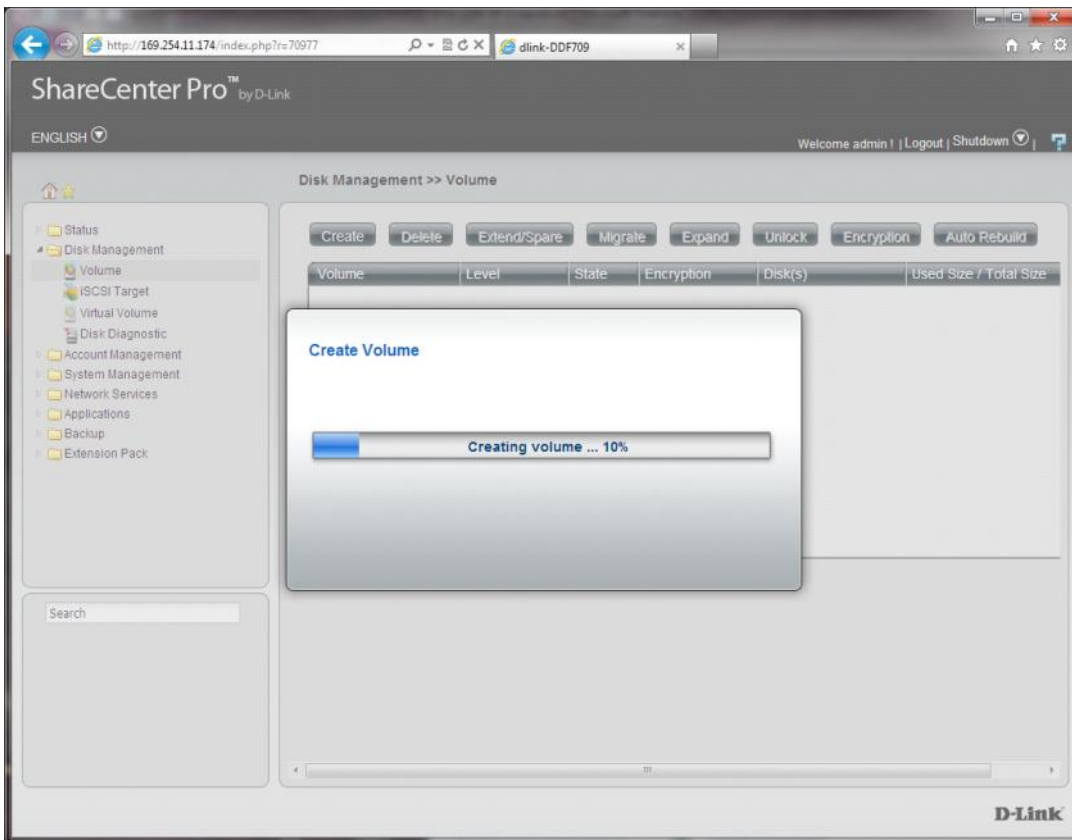
# DNS-1100-04 Screenshots

Wednesday, 9 November 2011  
2:08 PM

FW 1.0  
IP: DHCP  
Admin/<blank>







ShareCenter Pro™ by D-Link

ENGLISH | Welcome admin! | Logout | Shutdown

Status >> Hard Drive Status

Details

| Slot | Vendor  | Model           | Temperature (°C/°F) | Size      |
|------|---------|-----------------|---------------------|-----------|
| 1    | SAMSUNG | SAMSUNG HD103UJ | 24/75               | 931.51 GB |
| 2    | -       | -               | -                   | -         |
| 3    | -       | -               | -                   | -         |
| 4    | -       | -               | -                   | -         |

**S.M.A.R.T. Information**

| Name                    | Now | Worst | Thresh | Value  |
|-------------------------|-----|-------|--------|--------|
| Raw Read Error Rate     | 100 | 100   | 41     | 6      |
| Spin Up Time            | 54  | 54    | 9      | 10920  |
| Start Stop Count        | 100 | 100   | 0      | 348    |
| Reallocated Sector Ct   | 100 | 100   | 8      | 3      |
| Seek Error Rate         | 253 | 253   | 41     | 0      |
| Seek Time Performance   | 100 | 100   | 13     | 0      |
| Power On Hours          | 99  | 99    | 0      | 3473   |
| Spin Retry Count        | 100 | 100   | 41     | 0      |
| Calibration Retry Count | 100 | 100   | 0      | 19     |
| Power Cycle Count       | 100 | 100   | 0      | 117    |
| Read Soft Error Rate    | 100 | 100   | 0      | 6      |
| Runtime Bad Block       | 100 | 100   | 0      | 0      |
| End-to-End Error        | 100 | 100   | 99     | 0      |
| Reported Uncorrect      | 100 | 100   | 0      | 6      |
| Command Timeout         | 100 | 100   | 0      | 0      |
| Airflow Temperature Cel | 83  | 45    | 0      | 17     |
| Temperature Celsius     | 62  | 45    | 0      | 24     |
| Hardware ECC Recovered  | 100 | 100   | 0      | 750263 |

Close

D-Link

ShareCenter Pro™ by D-Link

ENGLISH

Welcome admin! | Logout | Shutdown

### Disk Management >> Volume

[Create](#)
[Delete](#)
[Extend/Spare](#)
[Migrate](#)
[Expand](#)
[Unlock](#)
[Encryption](#)
[Auto Rebuild](#)

| Volume   | Level      | State  | Encryption | Disk(s) | Used Size / Total Size |
|----------|------------|--------|------------|---------|------------------------|
| Volume_1 | Standalone | Normal | Disabled   | 1       | 199.79 MB / 915.91 GB  |

Search

D-Link

ShareCenter Pro™ by D-Link

ENGLISH

Welcome admin! | Logout | Shutdown

### Disk Management >> iSCSI Target

[iSCSI Manager](#)
[iSCSI Targets](#)

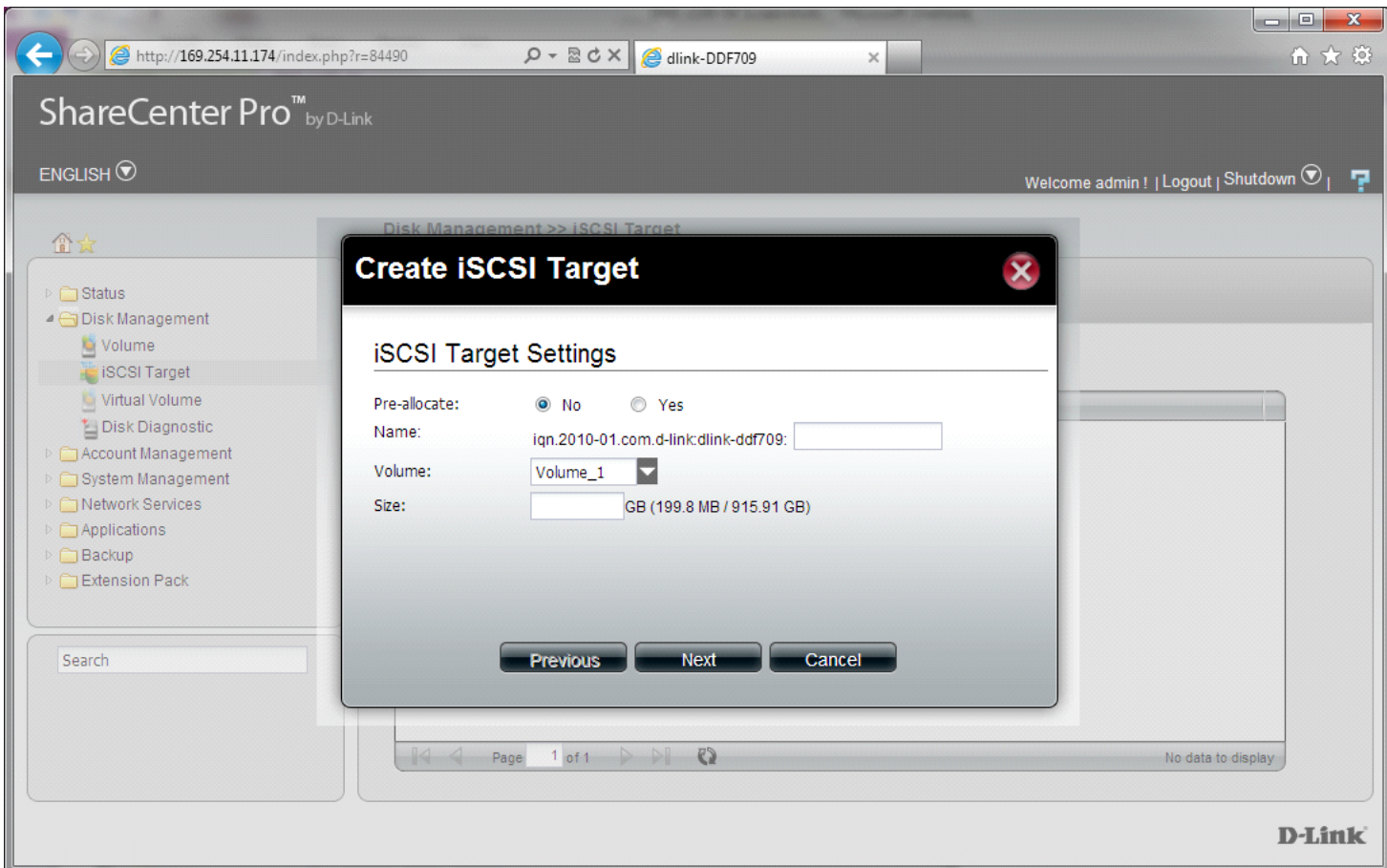
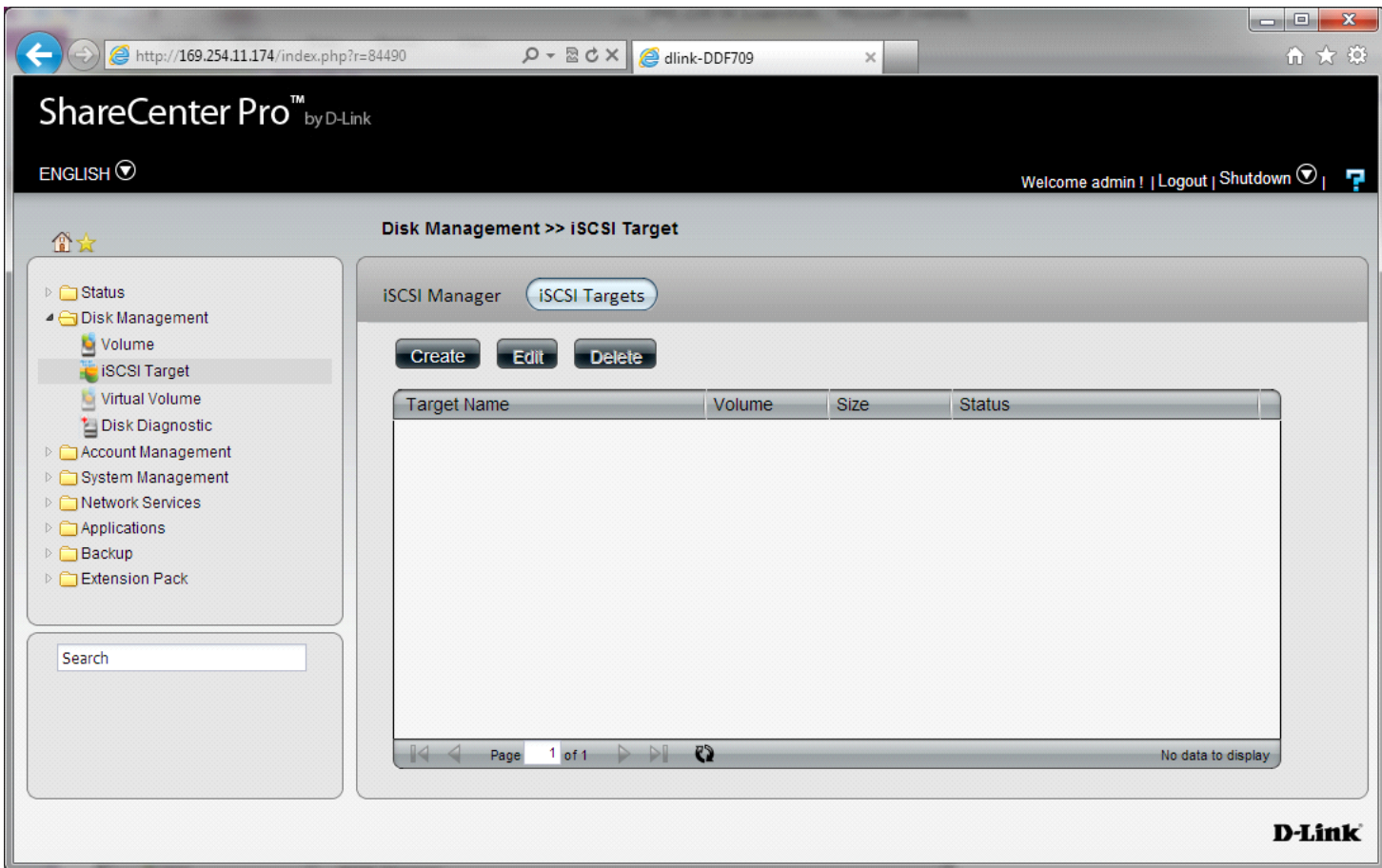
#### iSCSI Manager

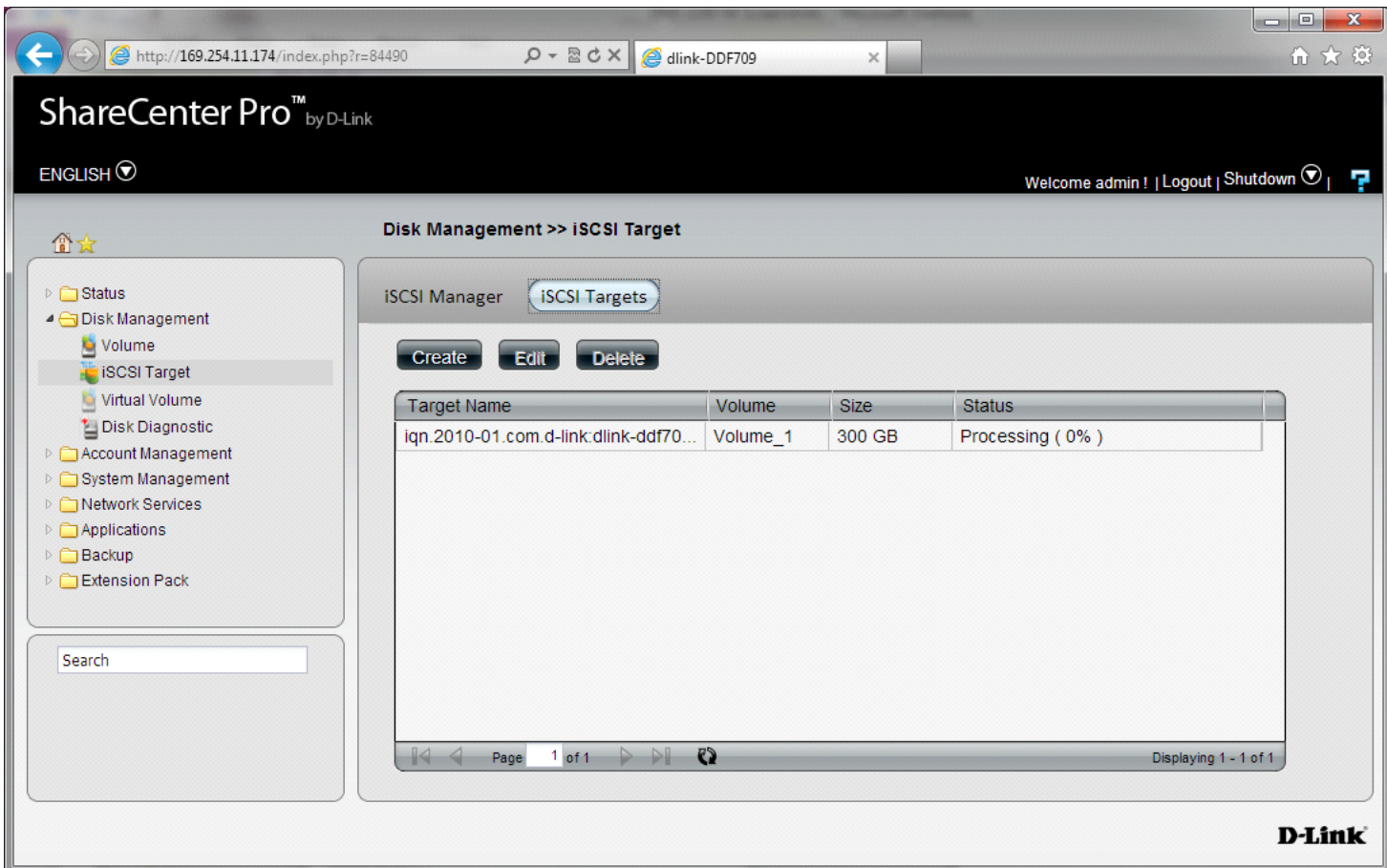
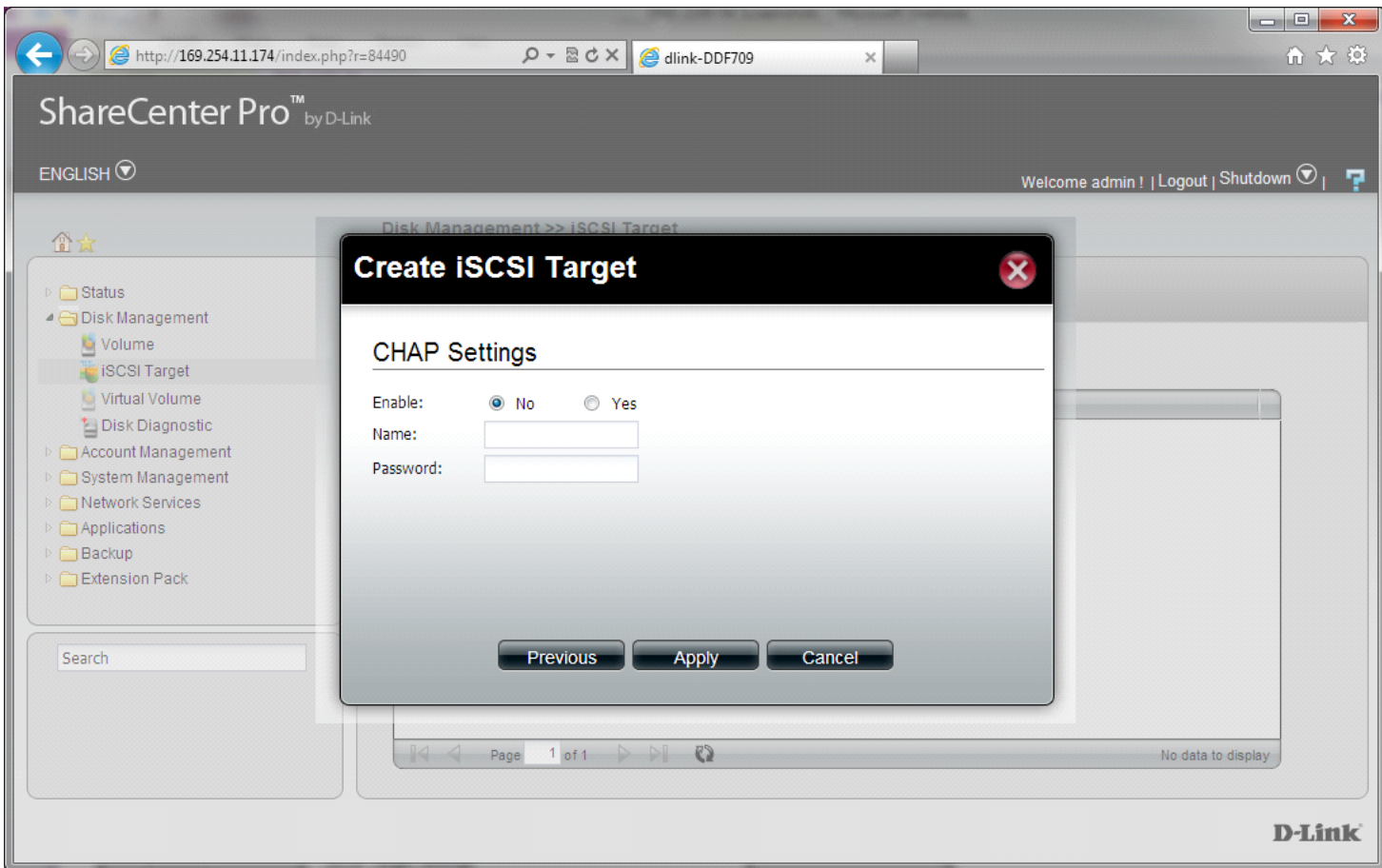
Enable iSCSI Target  
 Enable iSNS  
 iSNS Server IP:

[Apply](#)
[Cancel](#)

D-Link







ShareCenter Pro™ by D-Link

ENGLISH | Welcome admin! | Logout | Shutdown

### Disk Management >> iSCSI Target

ISCSI Manager | iSCSI Targets

Create Edit Delete

| Target Name                           | Volume   | Size   | Status            |
|---------------------------------------|----------|--------|-------------------|
| iqn.2010-01.com.d-link:dlink-ddf70... | Volume_1 | 300 GB | Processing ( 2% ) |
| iqn.2010-01.com.d-link:dlink-ddf70... | Volume_1 | 200 GB | Processing ( 0% ) |
| iqn.2010-01.com.d-link:dlink-ddf70... | Volume_1 | 20 GB  | Processing ( 6% ) |
| iqn.2010-01.com.d-link:dlink-ddf70... | Volume_1 | 20 GB  | Processing ( 4% ) |
| iqn.2010-01.com.d-link:dlink-ddf70... | Volume_1 | 30 GB  | Processing ( 2% ) |
| iqn.2010-01.com.d-link:dlink-ddf70... | Volume_1 | 20 GB  | Ready             |
| iqn.2010-01.com.d-link:dlink-ddf70... | Volume_1 | 20 GB  | Processing ( 1% ) |
| iqn.2010-01.com.d-link:dlink-ddf70... | Volume_1 | 20 GB  | Processing ( 0% ) |
| iqn.2010-01.com.d-link:dlink-ddf70... | Volume_1 | 20 GB  | Processing ( 0% ) |
| iqn.2010-01.com.d-link:dlink-ddf70... | Volume_1 | 10 GB  | Processing ( 0% ) |

Page 1 of 2 | Displaying 1 - 10 of 11

D-Link

ShareCenter Pro™ by D-Link

ENGLISH | Welcome admin! | Logout | Shutdown

### Disk Management >> Virtual Volume

Create Edit Delete Format Connect

| Target Name | Share Folder | Status | Used Size / Total ... |
|-------------|--------------|--------|-----------------------|
|             |              |        |                       |

D-Link



ShareCenter Pro™ by D-Link

ENGLISH

admin! | Logout | Shutdown

### Create Virtual Volume

Device IP:  Port:

Targets:

Share Folder:

Authentication:  No  Yes

User Name:

Password:

D-Link

ShareCenter Pro™ by D-Link

ENGLISH

Welcome admin! | Logout | Shutdown

### Disk Management >> Disk Diagnostic

| Slot | Manufacturer | Model           | Schedule | Progress | Result |
|------|--------------|-----------------|----------|----------|--------|
| 1    | SAMSUNG      | SAMSUNG HD103UJ | None     | -        |        |
| 2    | -            | -               | -        | -        |        |
| 3    | -            | -               | -        | -        |        |
| 4    | -            | -               | -        | -        |        |

D-Link

ShareCenter Pro™ by D-Link

ENGLISH | Welcome admin! | Logout | Shutdown

Account Management >> Admin Password

### Administrator's Password Settings

User Name:

Password:

New Password:

Confirm Password:

Apply Cancel

D-Link

ShareCenter Pro™ by D-Link

ENGLISH | Welcome admin! | Logout | Shutdown

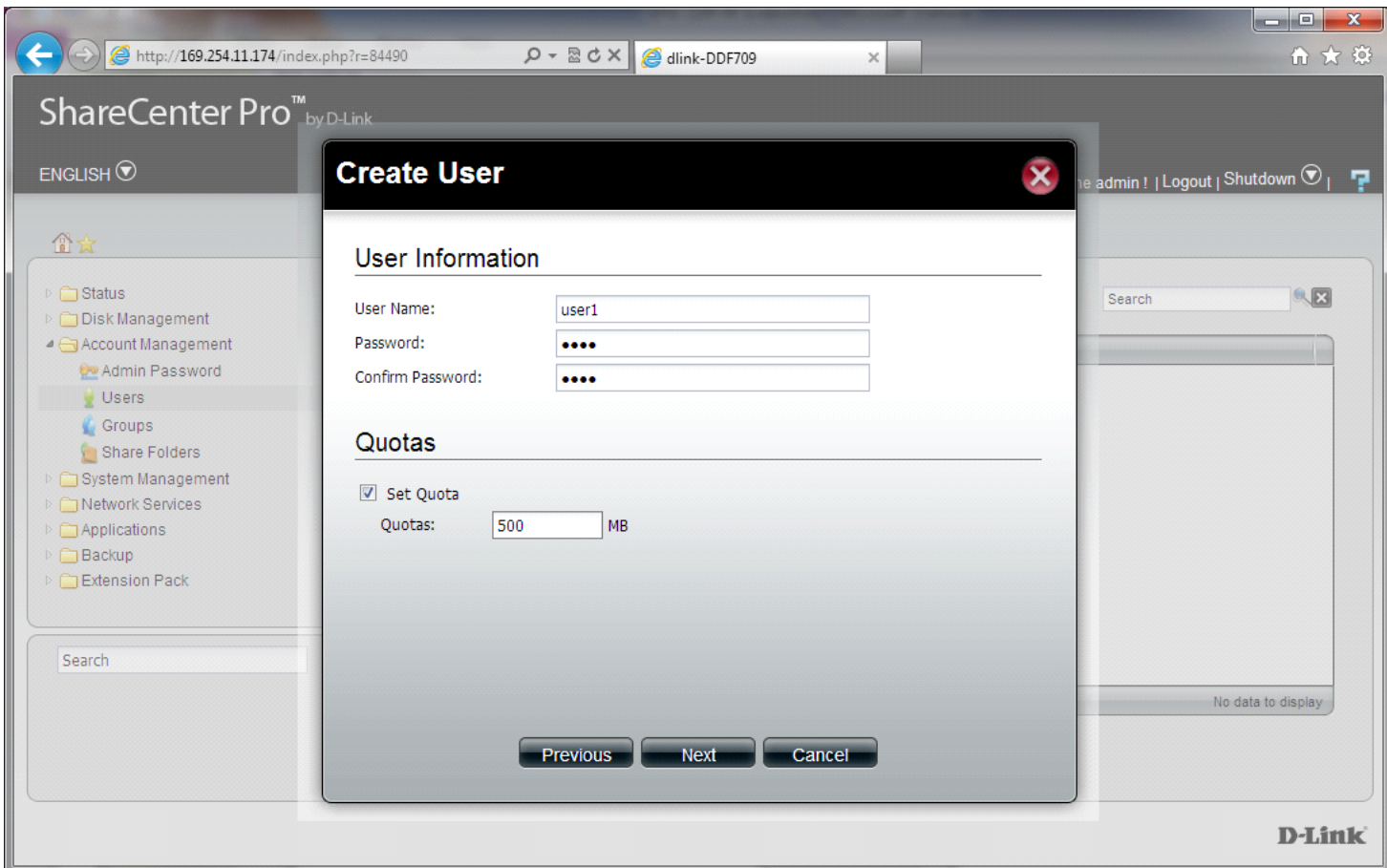
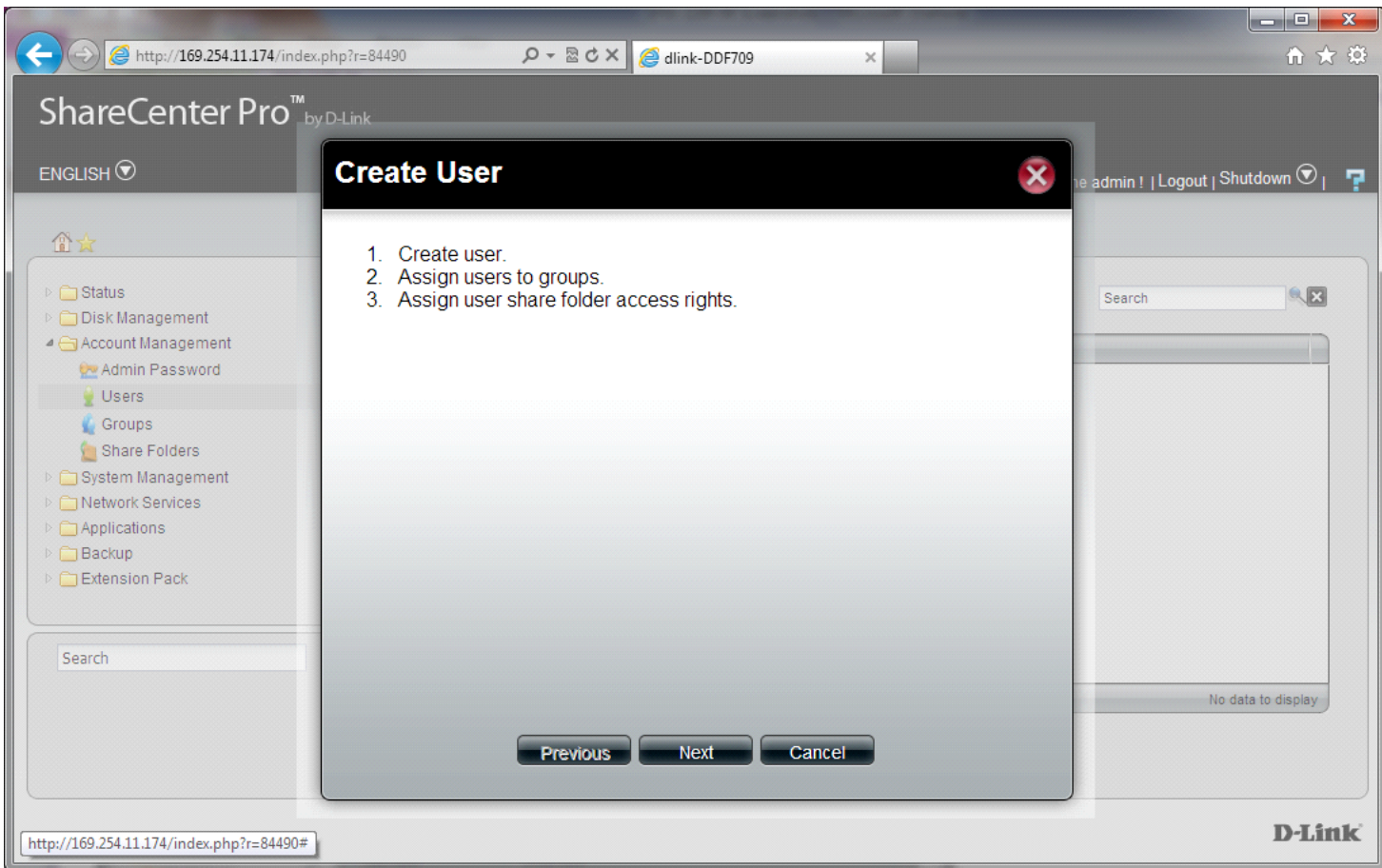
Account Management >> Users

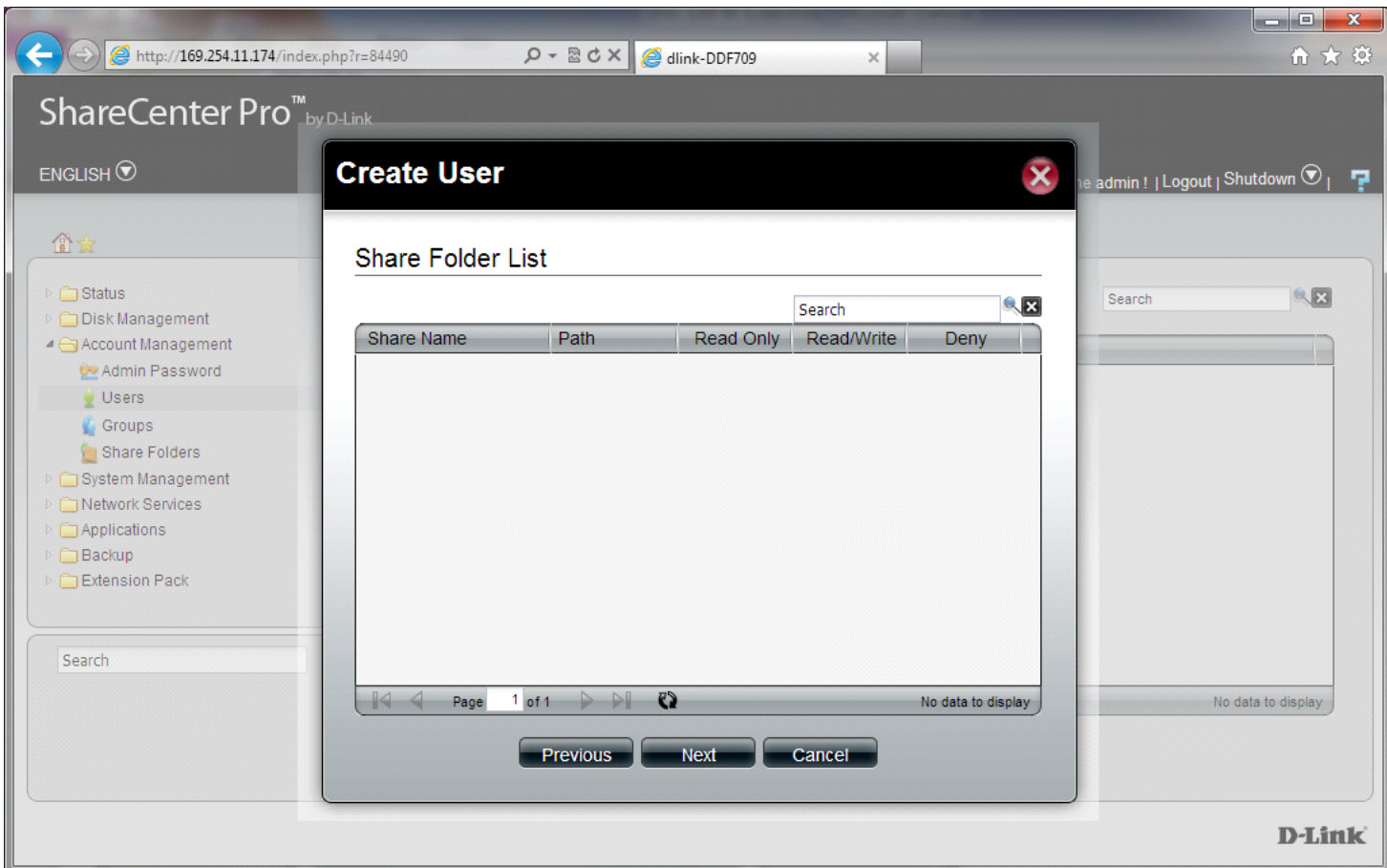
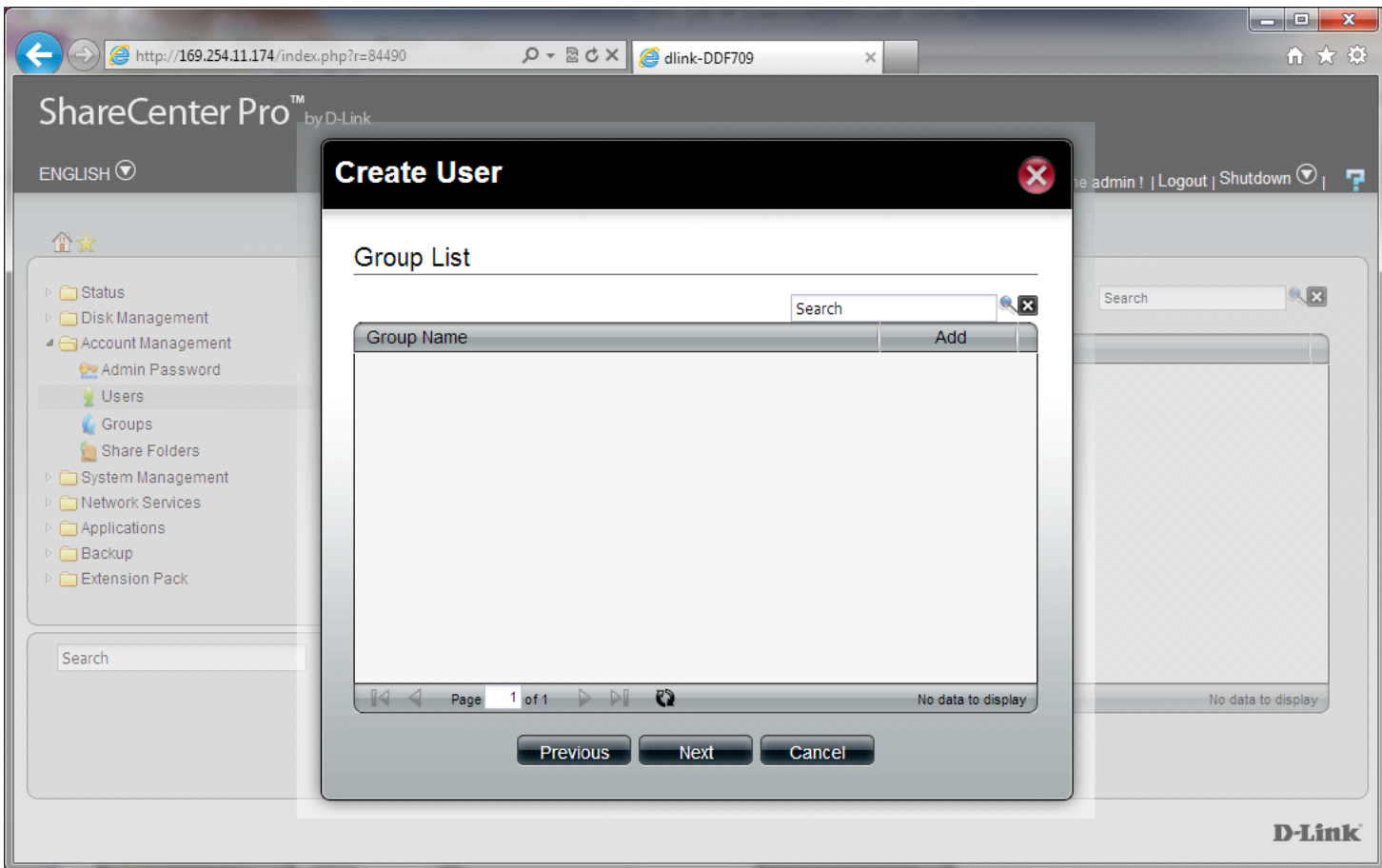
Create Edit Delete Import Users Create Batch

| <input checked="" type="checkbox"/> | User Name | Group Name |
|-------------------------------------|-----------|------------|
| No data to display                  |           |            |

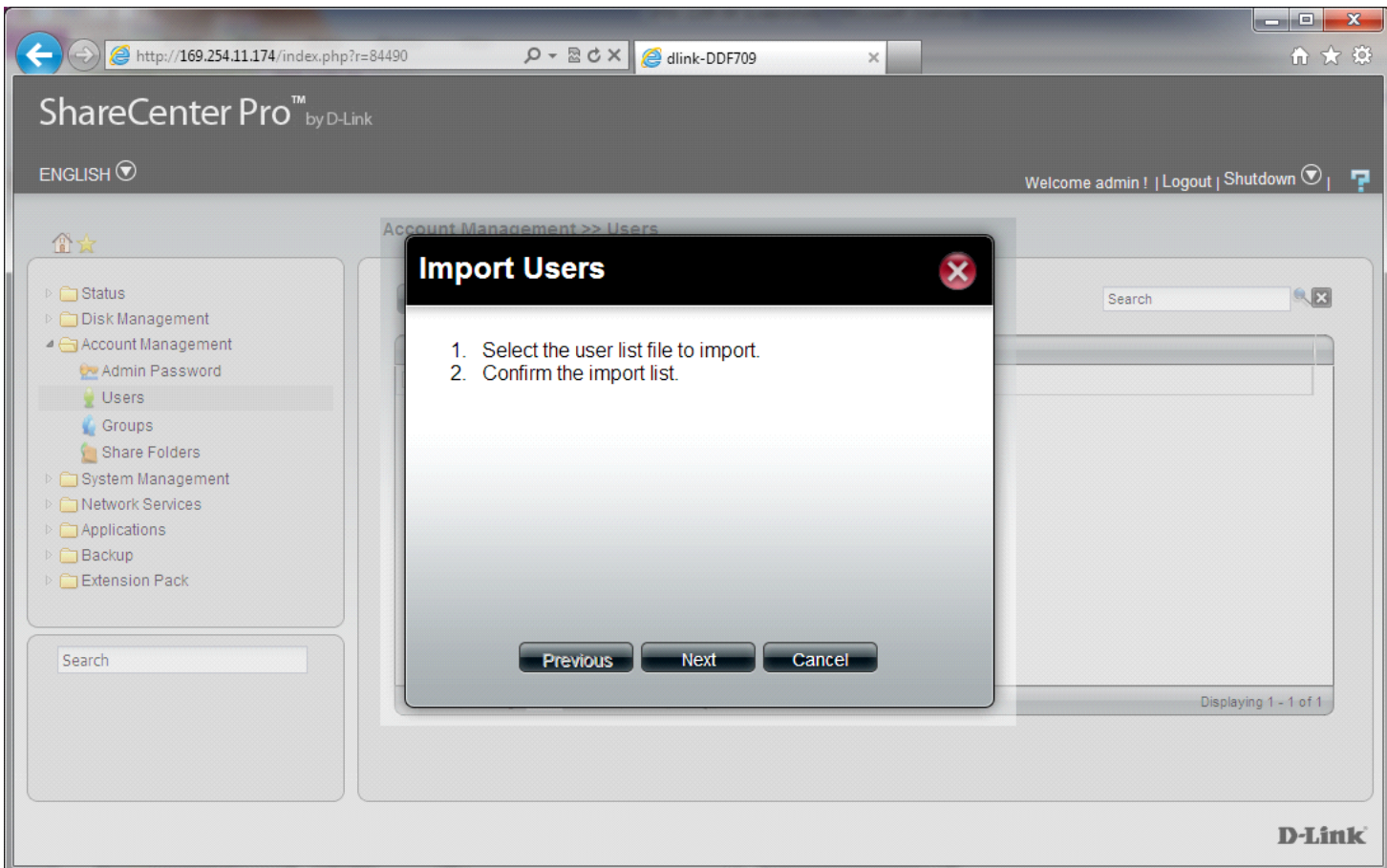
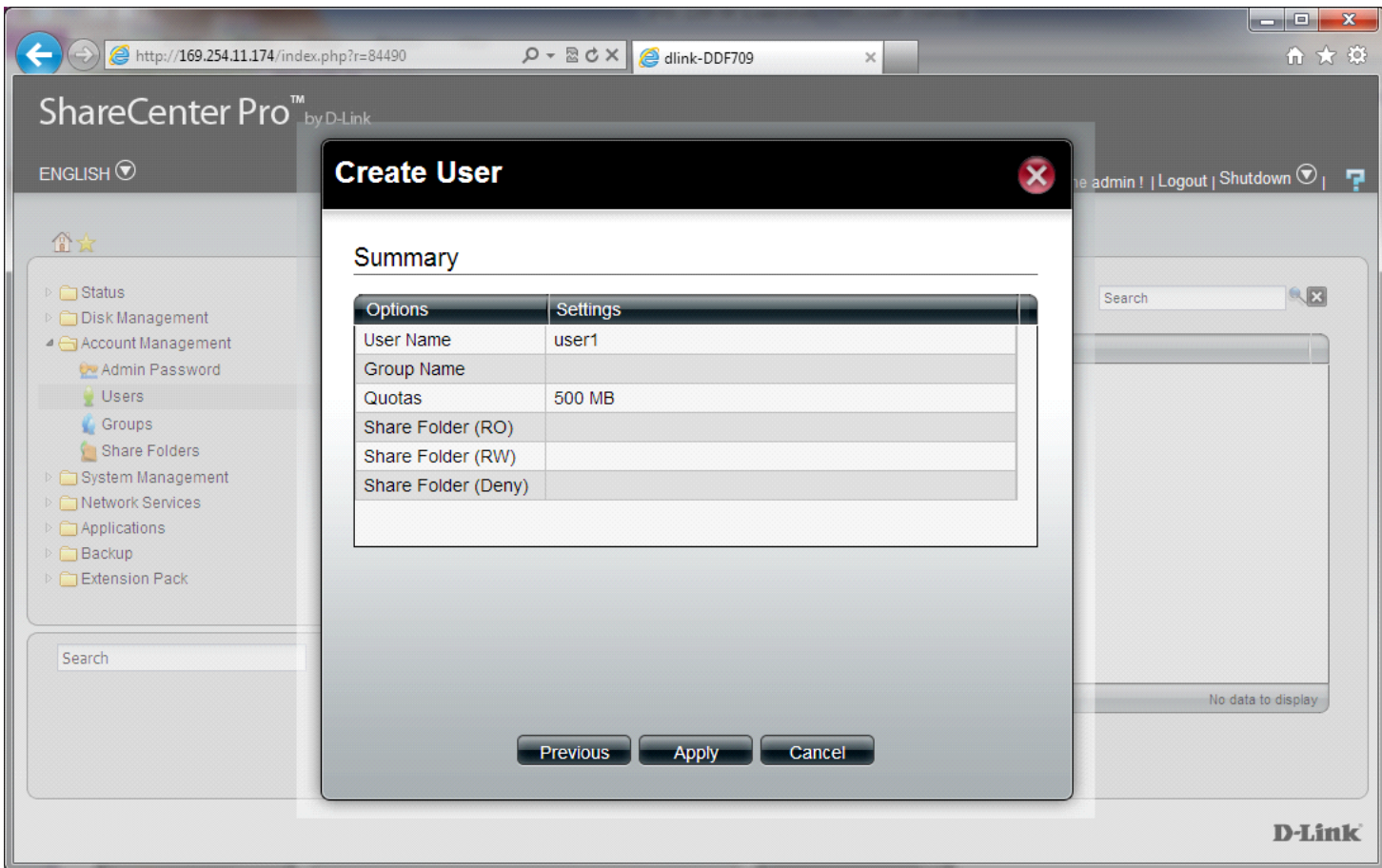
Page 1 of 1

D-Link

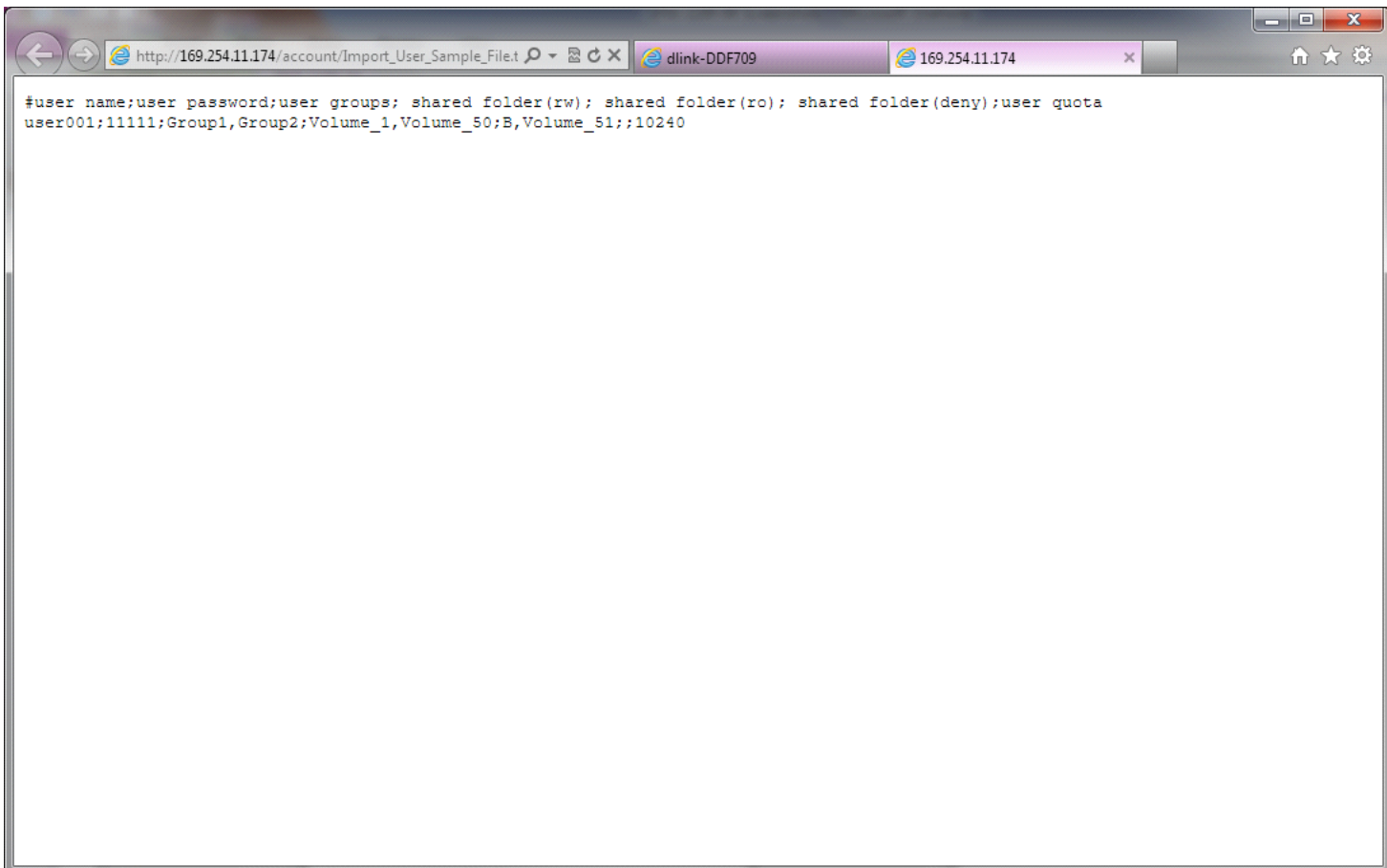
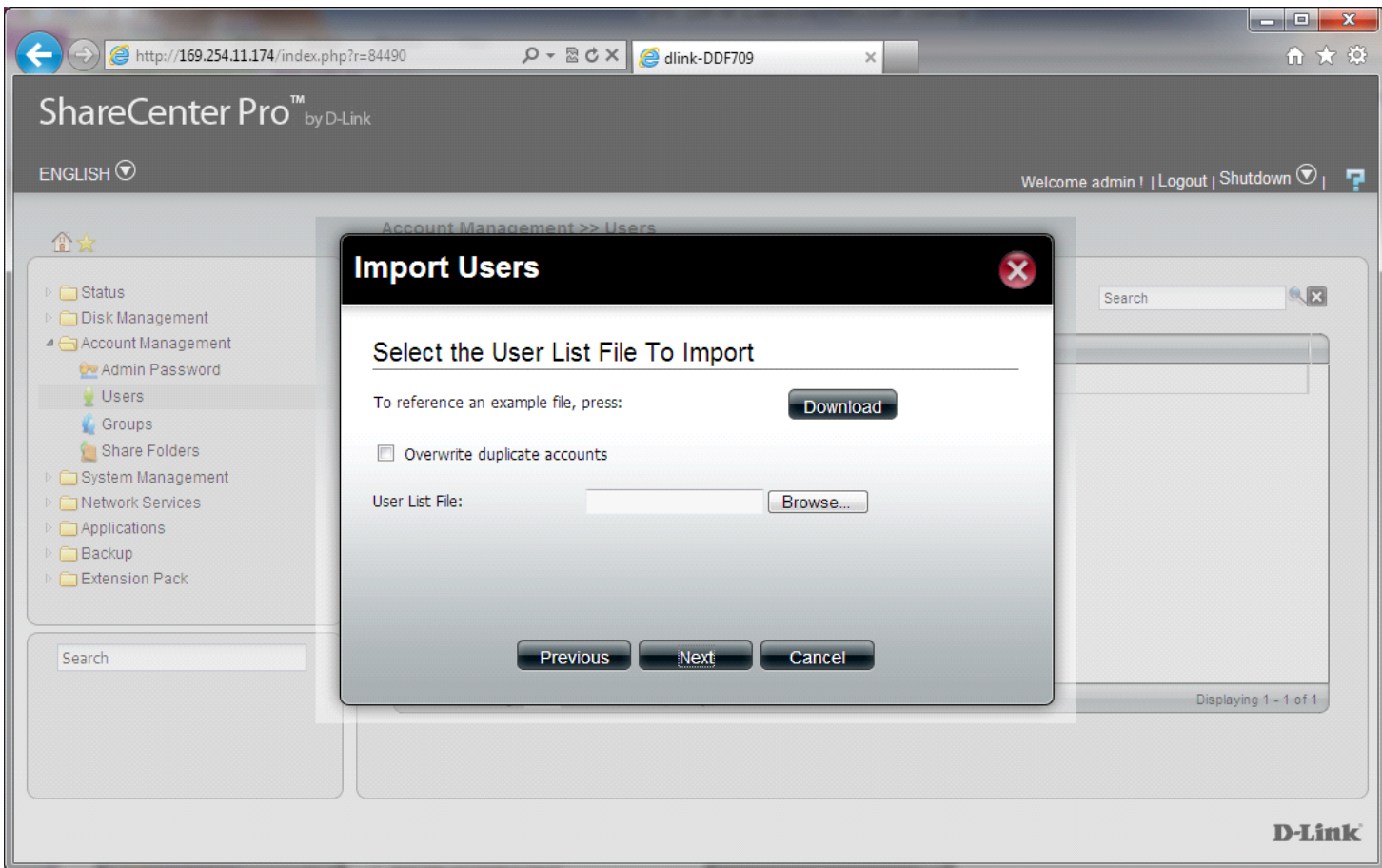


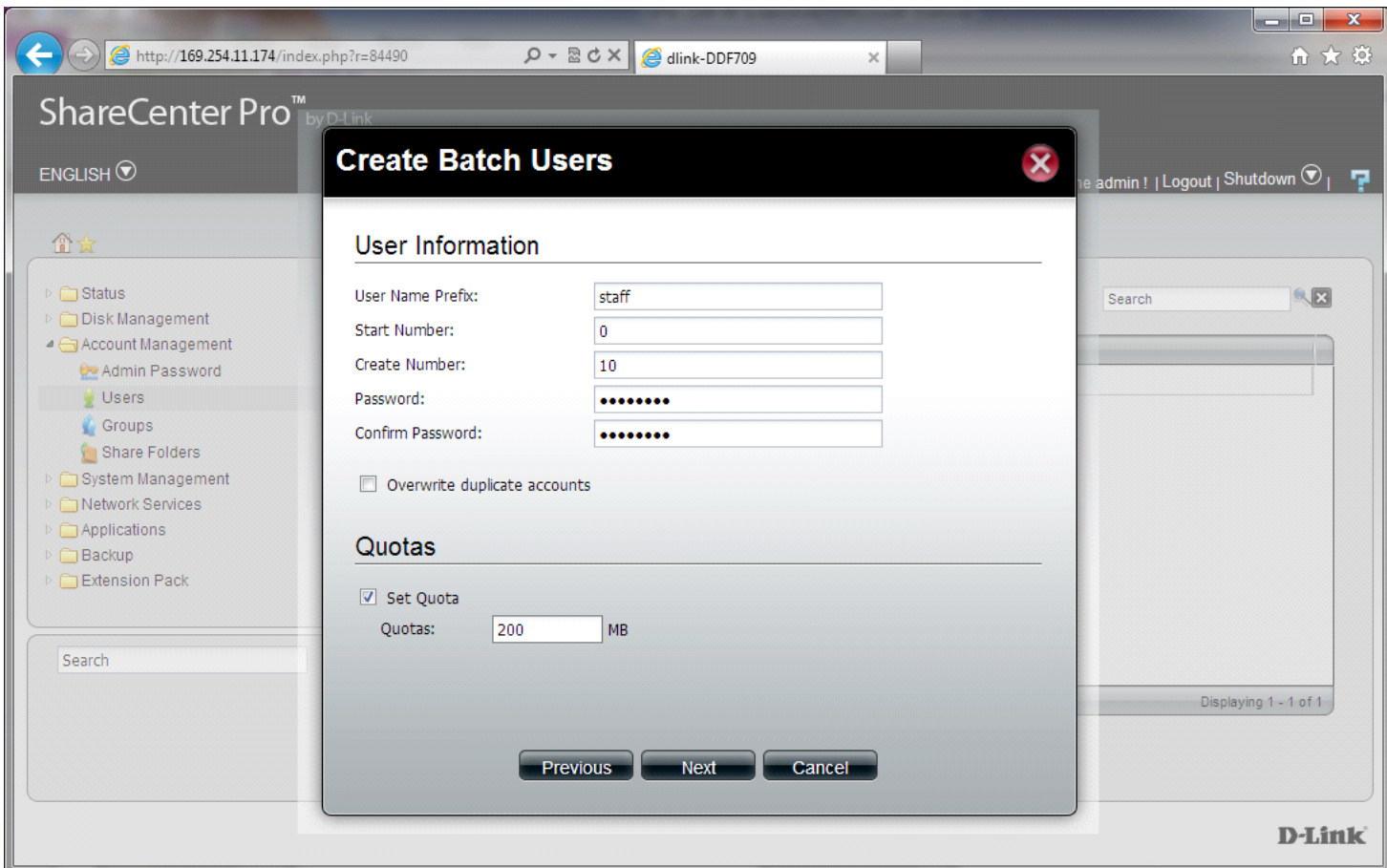
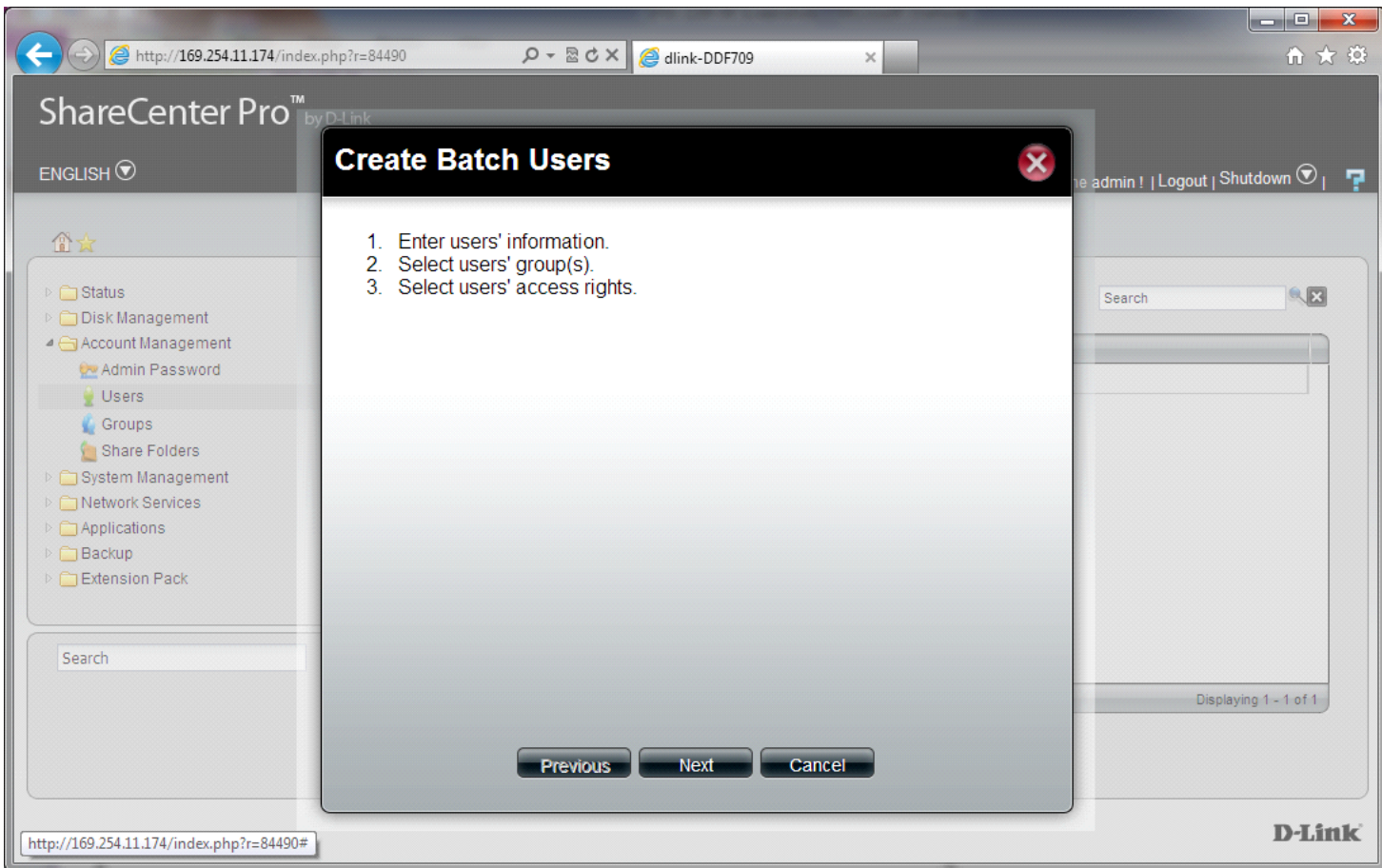












ShareCenter Pro™ by D-Link

ENGLISH ▾

Home ☆

- ▶ Status
- ▶ Disk Management
- ▶ Account Management
  - Admin Password
  - Users
  - Groups
  - Share Folders
- ▶ System Management
- ▶ Network Services
- ▶ Applications
- ▶ Backup
- ▶ Extension Pack

Search

http://169.254.11.174/index.php?r=84490 dlink-DDF709

### Create Batch Users

Group List

Search

| Group Name         | Add |
|--------------------|-----|
| No data to display |     |

Page 1 of 1

Previous Next Cancel

Displaying 1 - 1 of 1

D-Link

ShareCenter Pro™ by D-Link

ENGLISH ▾

Home ☆

- ▶ Status
- ▶ Disk Management
- ▶ Account Management
  - Admin Password
  - Users
  - Groups
  - Share Folders
- ▶ System Management
- ▶ Network Services
- ▶ Applications
- ▶ Backup
- ▶ Extension Pack

Search

http://169.254.11.174/index.php?r=84490 dlink-DDF709

### Create Batch Users

Share Folder List

Search

| Share Name         | Path | Read Only | Read/Write | Deny |
|--------------------|------|-----------|------------|------|
| No data to display |      |           |            |      |

Page 1 of 1

Previous Next Cancel

Displaying 1 - 1 of 1

D-Link

ShareCenter Pro™ by D-Link

ENGLISH ▾

Home ☆

- Status
- Disk Management
- Account Management
  - Admin Password
  - Users
  - Groups
  - Share Folders
- System Management
- Network Services
- Applications
- Backup
- Extension Pack

Search

http://169.254.11.174/index.php?r=84490 dlink-DDF709

### Create Batch Users

User Information

| User Name | State |
|-----------|-------|
| staff0    |       |
| staff1    |       |
| staff2    |       |
| staff3    |       |

Batch User's Options

| Options             | Settings |
|---------------------|----------|
| Password            | password |
| Group Name          |          |
| Quotas              | 200 MB   |
| Share Folder (RO)   |          |
| Share Folder (RW)   |          |
| Share Folder (Deny) |          |

Previous Apply Cancel

Displaying 1 - 1 of 1

D-Link

ShareCenter Pro™ by D-Link

ENGLISH ▾

Home ☆


- Status
- Disk Management
- Account Management
  - Admin Password
  - Users
  - Groups
  - Share Folders
- System Management
- Network Services
- Applications
- Backup
- Extension Pack

Search

http://169.254.11.174/index.php?r=84490 dlink-DDF709

### Create Batch Users

User Information



**Create Batch Users**

The system may need up to a couple of hours to create users (depending on the amount of user). Are you sure you want to continue?

Yes No

Share Folder (Deny)

Previous Apply Cancel

Displaying 1 - 1 of 1

D-Link



ShareCenter Pro™ by D-Link

ENGLISH

Welcome admin! | Logout | Shutdown

### Account Management >> Groups

Create Edit Delete

Search

| <input checked="" type="checkbox"/> | Group Name | Group Member(s) |
|-------------------------------------|------------|-----------------|
| No data to display                  |            |                 |

Page 1 of 1

D-Link

ShareCenter Pro™ by D-Link

ENGLISH

Welcome admin! | Logout | Shutdown

### Create Group

Group Info

Group Name:

Previous Next Cancel

D-Link



ShareCenter Pro™ by D-Link

ENGLISH

Welcome admin! | Logout | Shutdown

Account Management >> Groups

### Create Group

User List

Search

| User Name | Add                      |
|-----------|--------------------------|
| user1     | <input type="checkbox"/> |

Page 1 of 1 | Displaying 1 - 1 of 1

Previous Apply Cancel

No data to display

D-Link

ShareCenter Pro™ by D-Link

ENGLISH

Welcome admin! | Logout | Shutdown

Account Management >> Share Folders

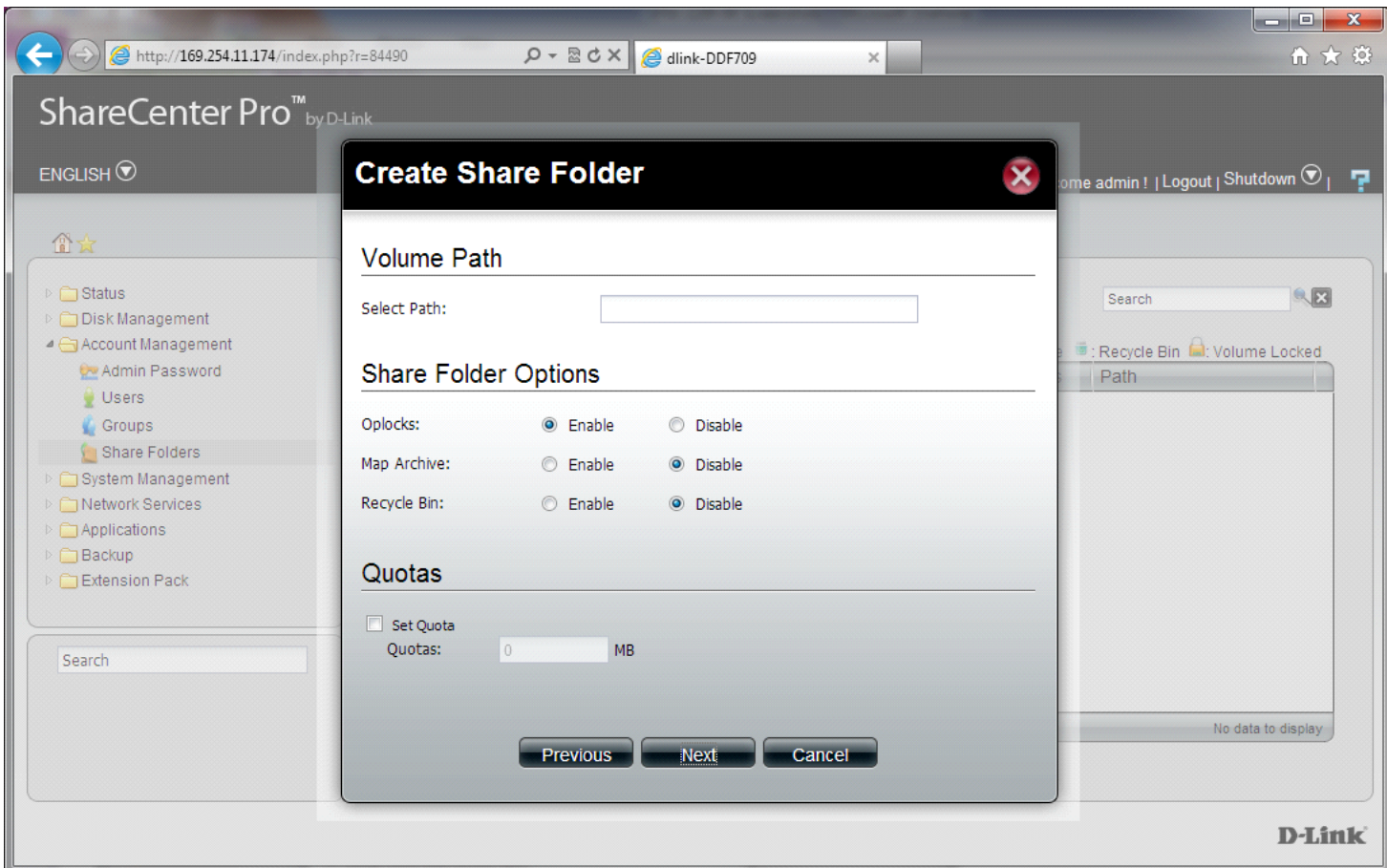
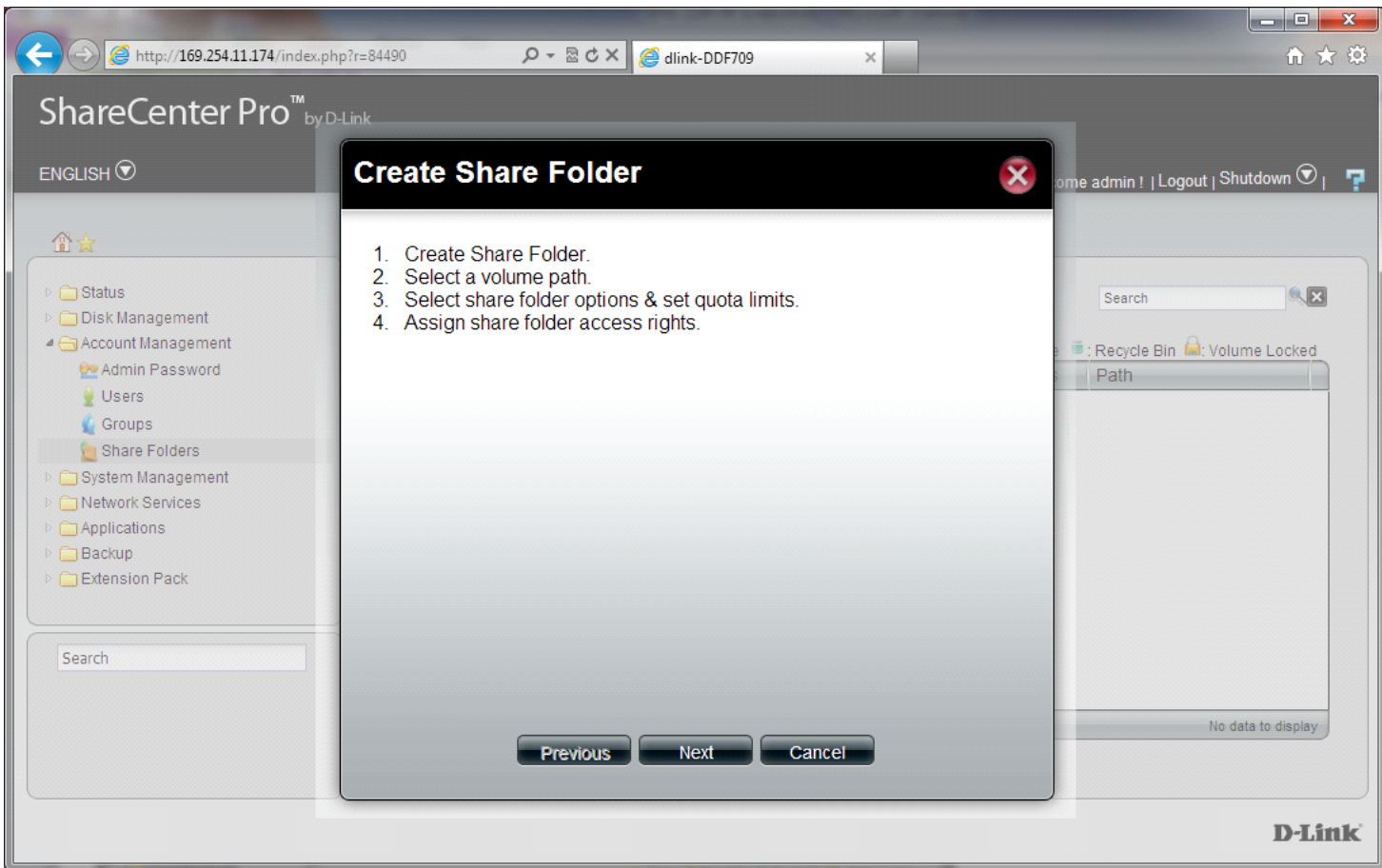
Create Edit Delete

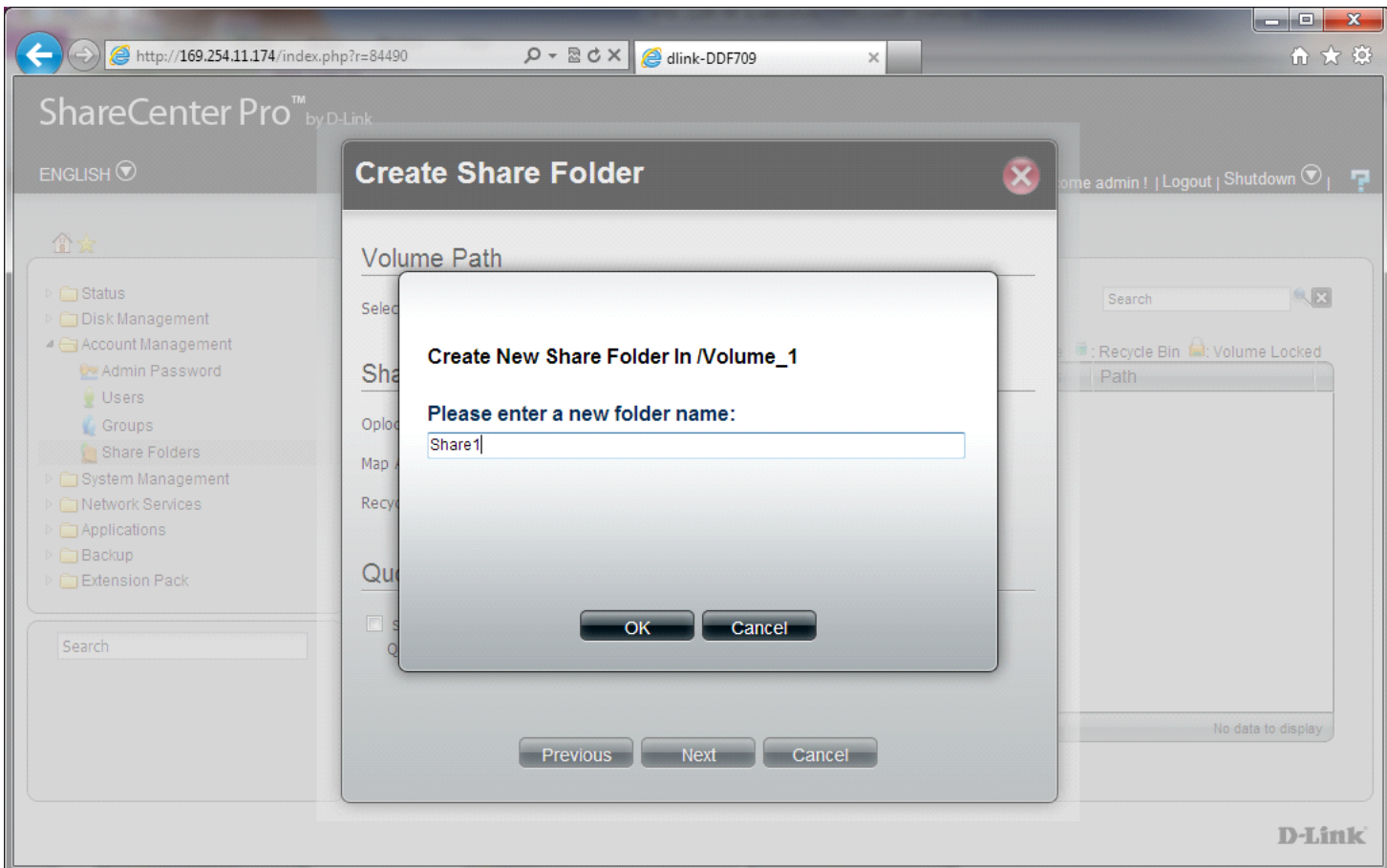
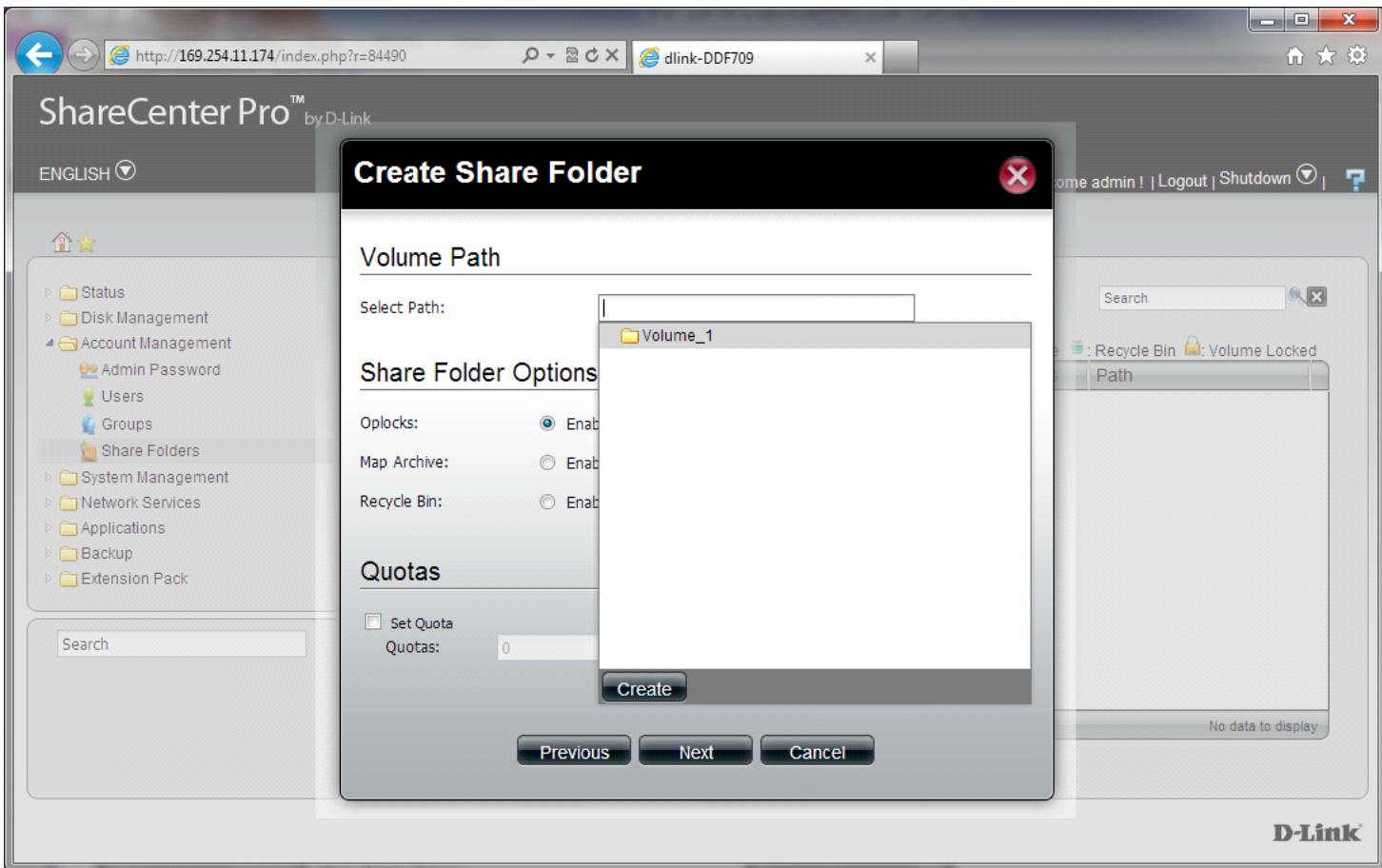
Search

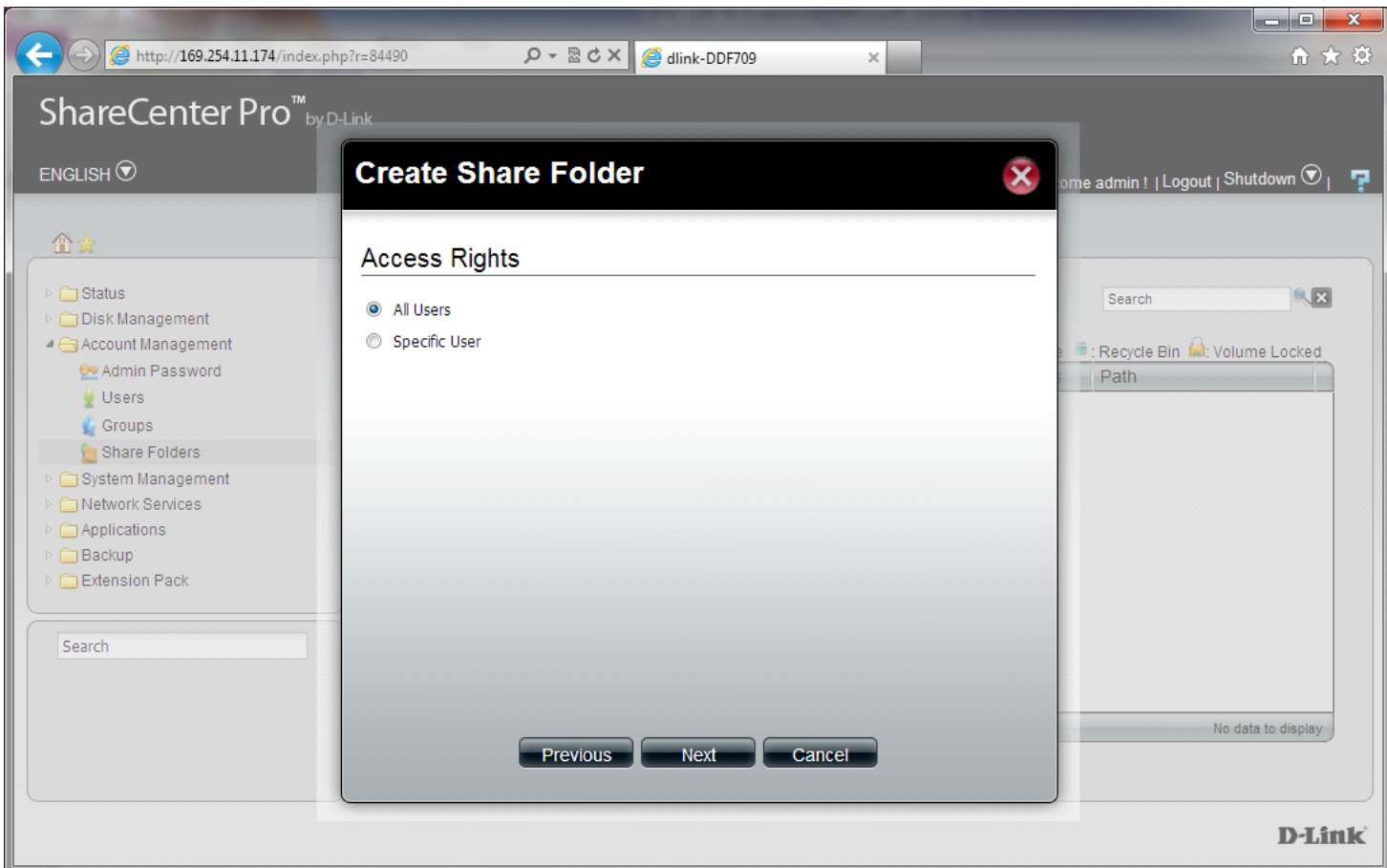
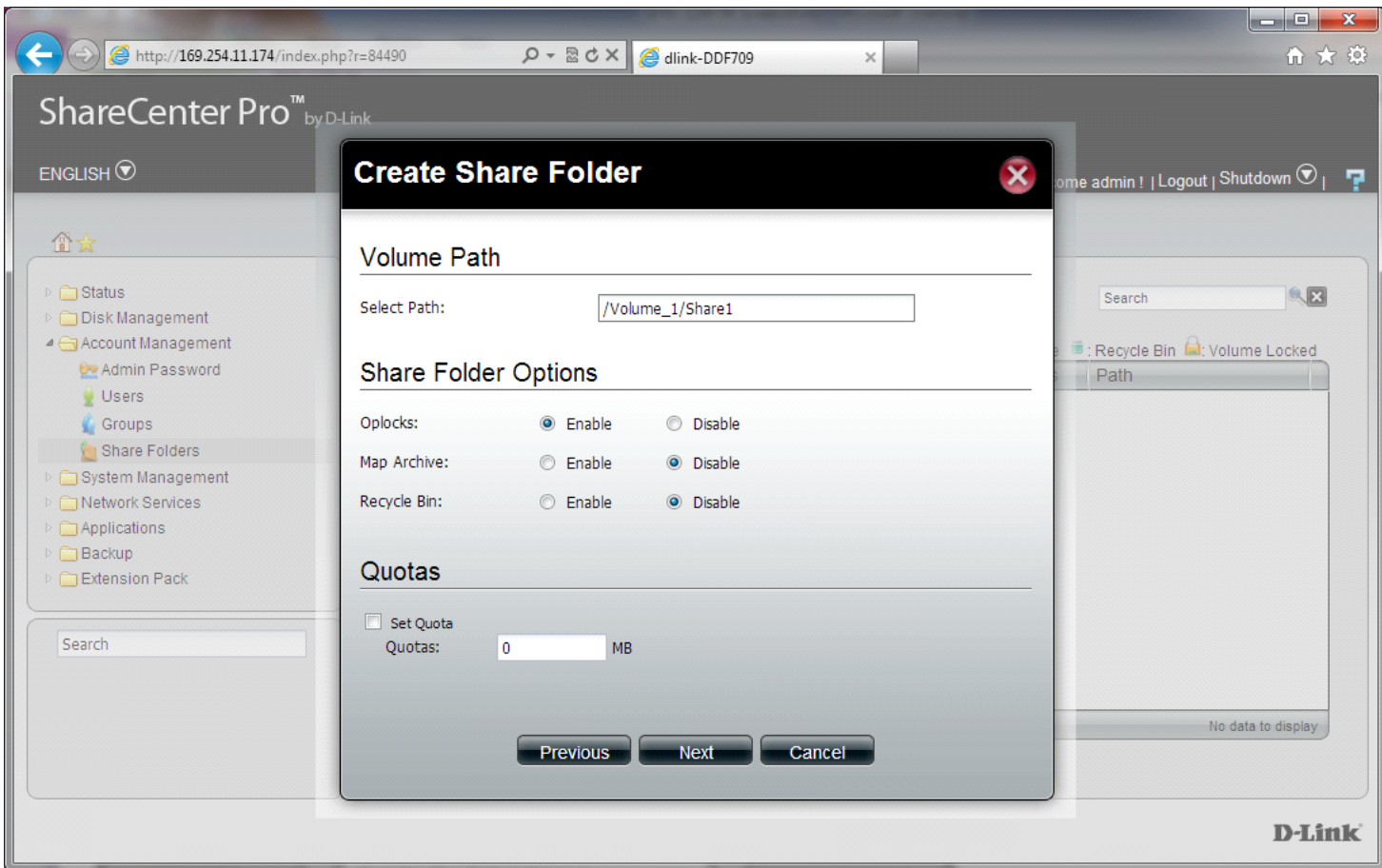
| <input checked="" type="checkbox"/> | Share Name | Usage Size | Options | Status | Path |
|-------------------------------------|------------|------------|---------|--------|------|
| No data to display                  |            |            |         |        |      |

Page 1 of 1

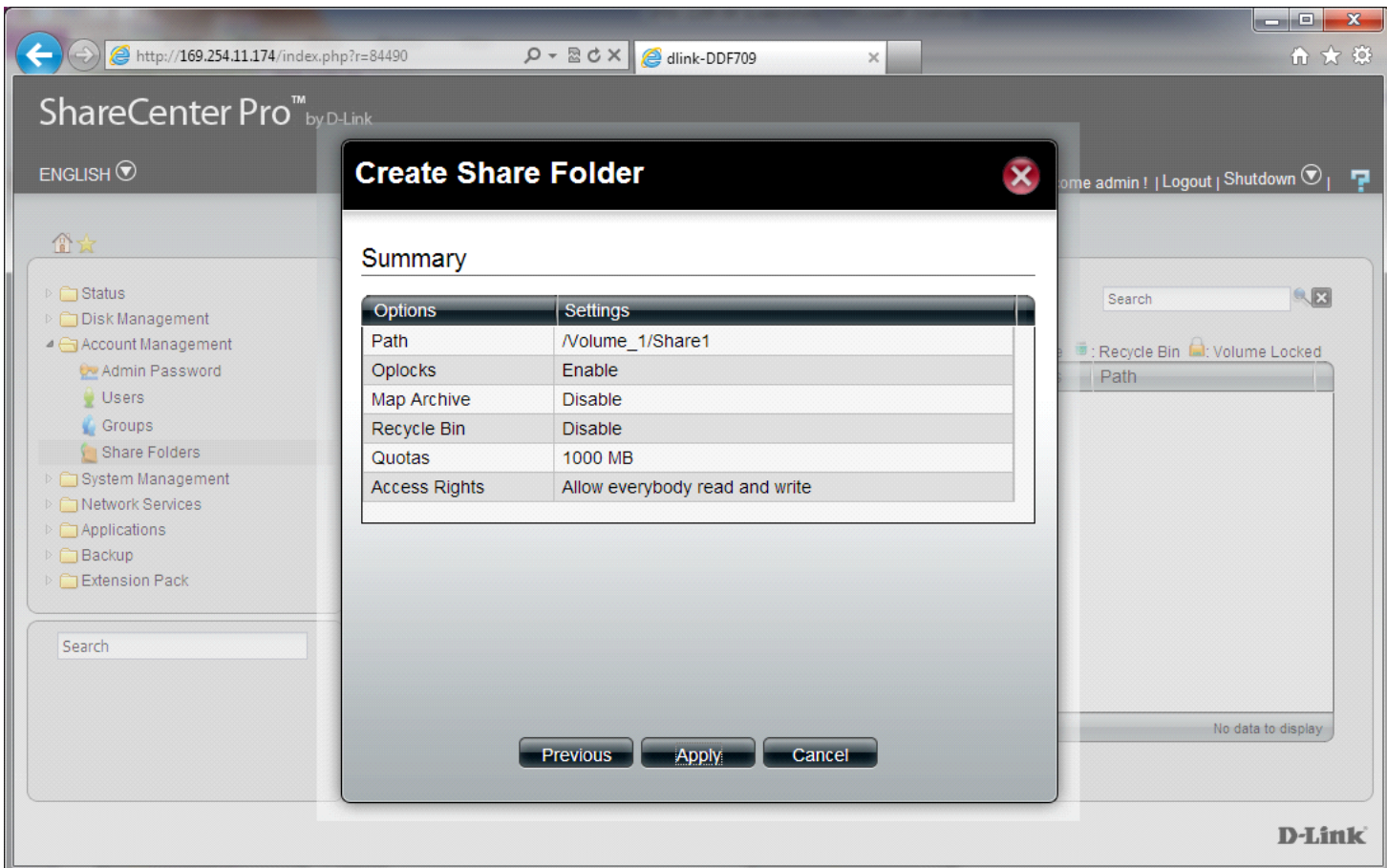
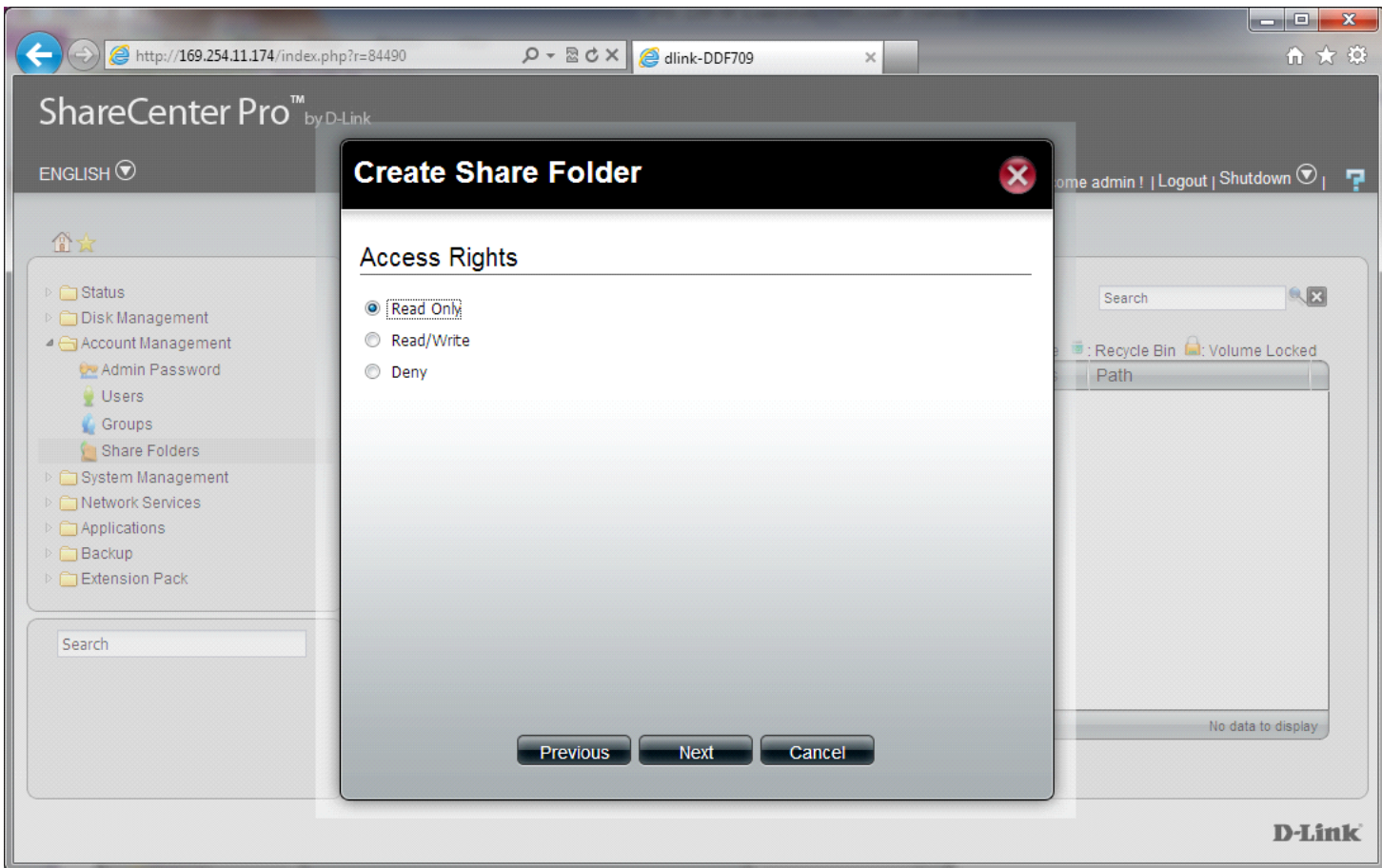
D-Link













ShareCenter Pro™ by D-Link

ENGLISH

Welcome admin! | Logout | Shutdown

### System Management >> Network

LAN 1 | LAN 2 | Global Settings | Route

#### LAN 1

DHCP Client  
 Static IP

IP Address: 169.254.11.174  
Subnet Mask: 255.255.0.0  
Jumbo Frame: Disabled  
Gateway: Disabled

#### VLAN

VLAN:  
VLAN ID:

3000  
4000  
5000  
6000  
7000  
8000  
9000

#### Port Bonding

Port Bonding:  Enable  Disable  
Option: Round Robin

Apply Cancel

D-Link

ShareCenter Pro™ by D-Link

ENGLISH | Welcome admin! | Logout | Shutdown

### System Management >> Network

LAN 1 | LAN 2 | Global Settings | Route

#### LAN 1

DHCP Client  
 Static IP

IP Address: 169.254.11.174  
Subnet Mask: 255.255.0.0  
Jumbo Frame: Disabled  
Gateway: 0.0.0.0

#### VLAN

VLAN:  Enable  Disable  
VLAN ID: 0

#### Port Bonding

Port Bonding:  Enable  Disable  
Option: Round Robin

- Round Robin
- Active Backup
- XOR
- Broadcast
- 802.3ad
- Adaptive Transmit Load Balancing
- Adaptive Load Balancing

D-Link

ShareCenter Pro™ by D-Link

ENGLISH

Welcome admin! | Logout | Shutdown

### System Management >> Network

LAN 1 LAN 2 **Global Settings** Route

#### Host Name

Host Name:

#### DNS Server

Primary DNS:   
Invalid IP address. Please check IP address and try again.

Secondary DNS:

#### Default Gateway

Gateway:

**D-Link**

- Status
- Disk Management
- Account Management
- System Management
  - Network**
  - Time and Date
  - System Settings
  - Power Management
  - Email Alerts
  - Firmware Upgrade
  - Logs
- Network Services
- Applications
- Backup
- Extension Pack

Search

ShareCenter Pro™ by D-Link

ENGLISH

Welcome admin! | Logout | Shutdown

### System Management >> Network


LAN 1   LAN 2   Global Settings   **Route**

Create   Edit   Delete

| IP Address  | Subnet Mask | Gateway | Metric | Interface |
|-------------|-------------|---------|--------|-----------|
| 169.254.0.0 | 255.255.0.0 | 0.0.0.0 | 0      | LAN 1     |
| 224.0.0.0   | 255.0.0.0   | 0.0.0.0 | 0      | LAN 1     |

Page 1 of 1   Displaying 1 - 2 of 2

Search





ShareCenter Pro™ by D-Link

ENGLISH | Welcome admin! | Logout | Shutdown

System Management >> Network

LAN 1 | LAN 2 | Global Settings | **Route**

Create | Edit | Delete

| IP Address  | Metric | Interface |
|-------------|--------|-----------|
| 169.254.0.0 | 0      | LAN 1     |
| 224.0.0.0   | 0      | LAN 1     |

Displaying 1 - 2 of 2

### Create Route

Network Address:

Subnet Mask:

Metric:

Interface:

Gateway:

Apply | Cancel

D-Link

ShareCenter Pro™ by D-Link

ENGLISH

Welcome admin! | Logout | Shutdown

System Management >> Time and Date

**Date and Time**

Current Time: 16:58:06 , 06/25/2010

**Time Zone Settings**

Time Zone: (GMT+10:00) Canberra, Melbourne, Sydney

**Synchronize Time Settings**

Set from Computer

Set Manually

2011-11-09 0:00:00

Set from NTP Server

Select NTP Server

Apply Cancel

D-Link

ShareCenter Pro™ by D-Link

ENGLISH

Welcome admin! | Logout | Shutdown

System Management >> System Settings

Configuration Settings

Save Configuration:

Load Configuration:

Default Configuration:

Idle Time Settings

Web Timeout:  (Minutes)

System Overheat Settings

System Overheat Temperature:   °C

D-Link

ShareCenter Pro™ by D-Link

ENGLISH

Welcome admin! | Logout | Shutdown

System Management >> Power Management

Power Saving Settings | Schedule Power On/Off Settings

Hard Drive Hibernation Settings

Hard Drive Hibernation:  Enable  Disable

Turn Off Hard Drive:

OLED Display Settings

OLED Display:

Auto Power Recovery Settings

Auto Power Recovery:  Enable  Disable

Fan Control

Type: 

- Auto (Low/High)
- Auto (Off/Low/High)
- Auto (Low/High)
- Manual (Always on High)

D-Link

ShareCenter Pro™ by D-Link

ENGLISH

Welcome admin! | Logout | Shutdown

System Management >> Power Management

Power Saving Settings **Schedule Power On/Off Settings**

### Schedule Power On/Off

Schedule Power On/Off:  Enable  Disable

### Schedule On / Schedule Off

|      | Schedule On              |      | Schedule Off             |      |
|------|--------------------------|------|--------------------------|------|
| SUN: | <input type="checkbox"/> | 0:00 | <input type="checkbox"/> | 0:00 |
| MON: | <input type="checkbox"/> | 0:00 | <input type="checkbox"/> | 0:00 |
| TUE: | <input type="checkbox"/> | 0:00 | <input type="checkbox"/> | 0:00 |
| WED: | <input type="checkbox"/> | 0:00 | <input type="checkbox"/> | 0:00 |
| THU: | <input type="checkbox"/> | 0:00 | <input type="checkbox"/> | 0:00 |
| FRI: | <input type="checkbox"/> | 0:00 | <input type="checkbox"/> | 0:00 |
| SAT: | <input type="checkbox"/> | 0:00 | <input type="checkbox"/> | 0:00 |

Apply Cancel

D-Link



ShareCenter Pro™ by D-Link

ENGLISH | Welcome admin! | Logout | Shutdown

### System Management >> Email Alerts

- Status
- Disk Management
- Account Management
- System Management
  - Network
  - Time and Date
  - System Settings
  - Power Management
  - Email Alerts**
  - Firmware Upgrade
  - Logs
- Network Services
- Applications
- Backup
- Extension Pack

#### E-Mail Settings

Email Alert:  Enable  Disable

Login Method:

User Name:

Password:

Encryption:  SSL/TLS  Disable

SMTP Server:

Port Number:

Sender E-mail:

Receiver E-mail:

Test E-Mail:

#### Event Alert Settings

- Administrator's Password Has Been Changed
- Firmware Has Been Upgraded
- Network Settings Have Been Changed
- System Temperature Has Been Exceeded
- S.M.A.R.T Test Has Finished
- System Has Rebooted From A Power Failure
- Volume/Disk Status Has Been Changed
- Space Status Interval:  (Hours)  (Minutes)
- One of The Volumes Is Full
- Send Log File:  Time:  -

D-Link

ShareCenter Pro™ by D-Link

ENGLISH

Welcome admin! | Logout | Shutdown

System Management >> Firmware Upgrade

**Firmware Settings**

Current Firmware Version: 1.00b10

Firmware Date: 2011.04.22.1410

File Path:

D-Link

ShareCenter Pro™ by D-Link

ENGLISH

Welcome admin! | Logout | Shutdown

System Management >> Logs

**Log Settings**

System Log:  Enable  Disable

NFS:  Enable  Disable

CIFS:  Enable  Disable

FTP:  Enable  Disable

Event:  Enable  Disable

D-Link

ShareCenter Pro™ by D-Link

ENGLISH | Welcome admin! | Logout | Shutdown

### System Management >> Logs

Log Settings | **Log Message List**

Refresh Log | Clear Log | Save Log

|    | Severity | Date Time            | Log message                         |
|----|----------|----------------------|-------------------------------------|
| 1  | 5        | 2010 Jun 25 16:03:09 | Start service : FTP                 |
| 2  | 5        | 2010 Jun 25 16:03:08 | Start service : CIFS                |
| 3  | 5        | 2010 Jun 25 16:03:01 | Volume : Volume_1 has been created. |
| 4  | 5        | 2010 Jun 25 16:02:57 | Stop service : FTP                  |
| 5  | 5        | 2010 Jun 25 16:02:57 | Stop service : CIFS                 |
| 6  | 5        | 2010 Jun 25 16:02:08 | Start service : FTP                 |
| 7  | 5        | 2010 Jun 25 16:02:07 | Volume : Volume_1 has been removed. |
| 8  | 5        | 2010 Jun 25 16:02:06 | Start service : CIFS                |
| 9  | 5        | 2010 Jun 25 16:01:55 | Stop service : FTP                  |
| 10 | 5        | 2010 Jun 25 16:01:55 | Stop service : CIFS                 |

Page 1 of 4 | Displaying 1 - 10 of 40

**D-Link**

ShareCenter Pro™ by D-Link

ENGLISH | Welcome admin! | Logout | Shutdown

### Network Services

**Network Services**

File Sharing | Dynamic DNS | Network Discovery Services

**D-Link**

ShareCenter Pro™ by D-Link

ENGLISH

Welcome admin! | Logout | Shutdown

### Network Services >> File Sharing

File Sharing FTP NFS CIFS DFS

#### File Sharing

|        |                                         |                                          |
|--------|-----------------------------------------|------------------------------------------|
| CIFS:  | <input checked="" type="radio"/> Enable | <input type="radio"/> Disable            |
| FTP:   | <input checked="" type="radio"/> Enable | <input type="radio"/> Disable            |
| NFS:   | <input type="radio"/> Enable            | <input checked="" type="radio"/> Disable |
| DFS:   | <input checked="" type="radio"/> Enable | <input type="radio"/> Disable            |
| Quota: | <input checked="" type="radio"/> Enable | <input type="radio"/> Disable            |

(Notice: Applying any share to NFS service will disable oplocks.)

Apply Cancel

D-Link



ShareCenter Pro™ by D-Link

ENGLISH | Welcome admin! | Logout | Shutdown

### Network Services >> File Sharing

File Sharing **FTP** NFS CIFS DFS

#### Connection Settings

Control Port:

Port range of Passive FTP:

Use the default port range (55536~55663)

Use the following port range:  ~

Respond with external IP address for Passive mode:  Enable  Disable

External IP address:

Client Language:

#### Connection Restrictions

Max Connections:

Max Connections per IP:

Connection Idle Time:  Minutes

Bandwidth restriction:  Enable  Disable

Max upload rate per connection:  KB/s (0 KB/s means unlimited.)

Max download rate per connection:  KB/s (0 KB/s means unlimited.)

#### Security Settings

Anonymous Support:  Enable  Disable

SSL/TLS Connection Only:  Enable  Disable

**D-Link**

ShareCenter Pro™ by D-Link

ENGLISH

Welcome admin! | Logout | Shutdown

### Network Services >> File Sharing

File Sharing FTP NFS CIFS DFS

Create Edit Delete

Search

Volume Locked

| Mount Path | Host | Permission | Root Squash | Status |
|------------|------|------------|-------------|--------|
|------------|------|------------|-------------|--------|

Page 1 of 1

No data to display

D-Link

ShareCenter Pro™ by D-Link

ENGLISH

Welcome admin! | Logout | Shutdown

Network Services >> File Sharing

File Sharing FTP NFS CIFS DFS

### Description

Description: ShareCenter Pro 1100

### Workgroup Type

Workgroup  
Workgroup: WORKGROUP

Active Directory  
User Name:   
Password:   
DNS: 0.0.0.0  
Workgroup:   
Realm Name:   
AD Server Name:

Apply Cancel

D-Link

ShareCenter Pro™ by D-Link

ENGLISH

Welcome admin! | Logout | Shutdown

Network Services >> File Sharing

File Sharing FTP NFS CIFS DFS

Create Edit Delete

Search

| Local share name   | Host | Remote share folder |
|--------------------|------|---------------------|
| No data to display |      |                     |

Page 1 of 1

D-Link

ShareCenter Pro™ by D-Link

ENGLISH

Welcome admin! | Logout | Shutdown

Network Services >> Dynamic DNS

Dynamic DNS Settings

Dynamic DNS:  Enable  Disable

Server Address:  <<

Host Name:  (e.g. )

Username or Key:

Password or Key:

Verify Password or Key:

Timeout:  (Hours)

Status: Disconnected

Apply Cancel

D-Link



ShareCenter Pro™ by D-Link

ENGLISH

Welcome admin! | Logout | Shutdown

Network Services >> SNMP

SNMP Settings

SNMP:  Enable  Disable

SNMP Community:

Notification:  Enable  Disable

Notification IP:

Apply Cancel

D-Link

ShareCenter Pro™ by D-Link

ENGLISH

Welcome admin! | Logout | Shutdown

Network Services >> Network Discovery Services

Network Discovery Services

UPnP Discovery:  Enable  Disable

LLTD:  Enable  Disable

Apply Cancel

D-Link

ShareCenter Pro™ by D-Link

ENGLISH

Welcome admin! | Logout | Shutdown

Applications >> Web File Manager

Web File Manager

Server:  Enable  Disable

HTTP Port:

SSL Connection:  Enable  Disable

SSL Port:

Apply Cancel

D-Link

ShareCenter Pro™ by D-Link

ENGLISH

Welcome admin! | Logout | Shutdown

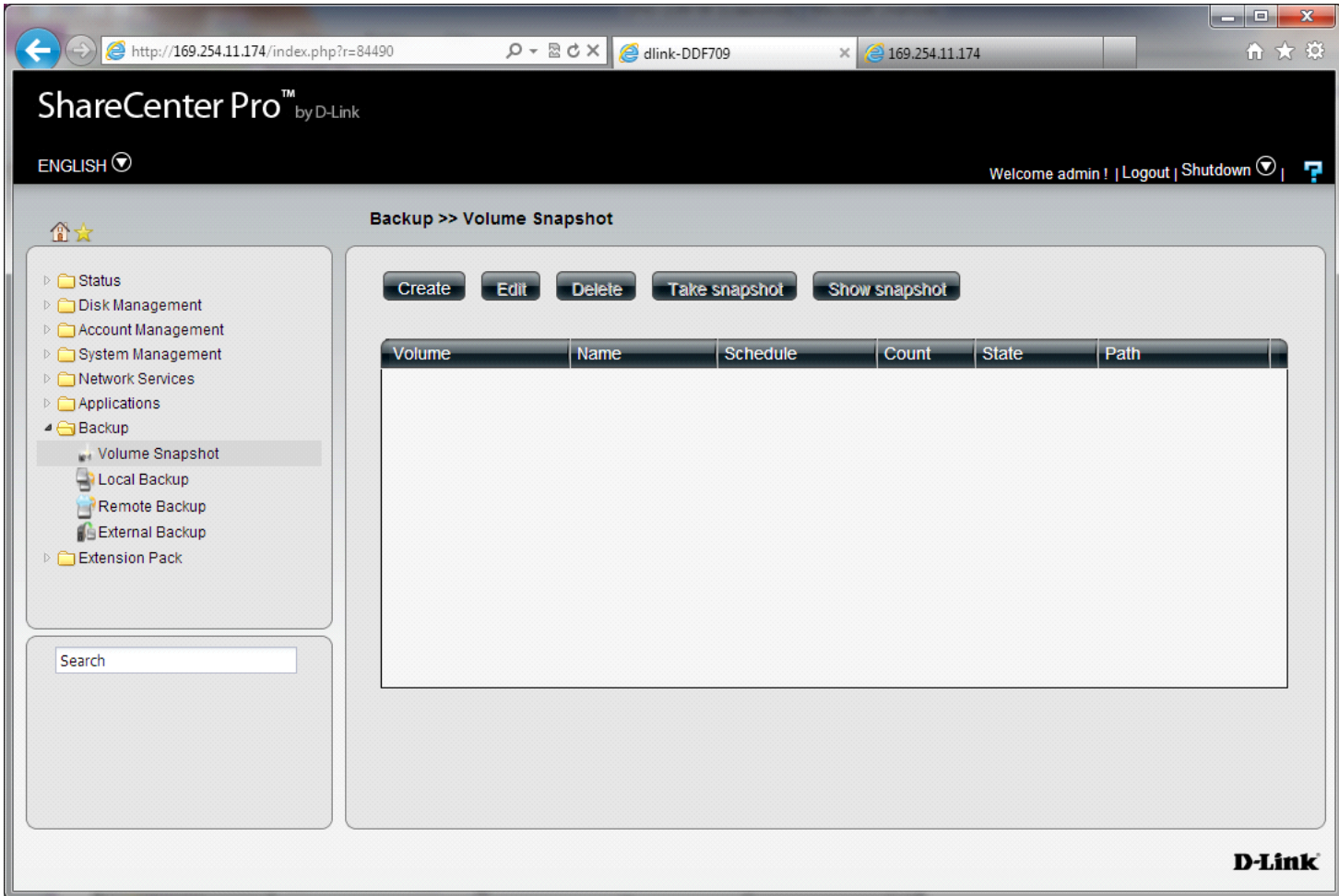
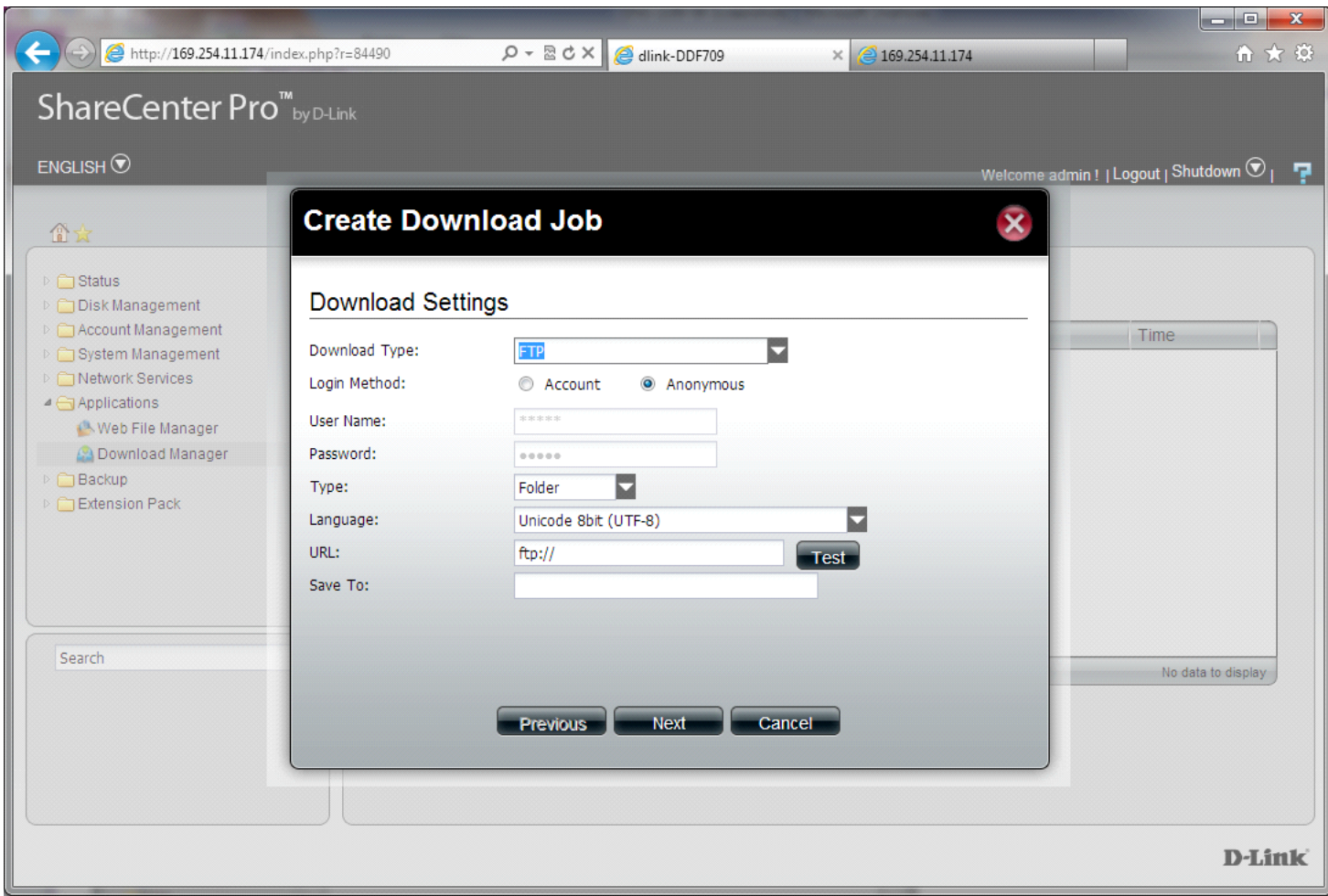
Applications >> Download Manager

Create Edit Delete

| Status             | % | Sp... | Download Path | Save To | Time |
|--------------------|---|-------|---------------|---------|------|
| No data to display |   |       |               |         |      |

Page 1 of 1

D-Link



ShareCenter Pro™ by D-Link

ENGLISH

Welcome admin! | Logout | Shutdown

### Backup >> Local Backup

Create Edit Delete

| Status             | % | Sp... | Download Path | Save To | Time |
|--------------------|---|-------|---------------|---------|------|
| No data to display |   |       |               |         |      |

Page 1 of 1

D-Link

ShareCenter Pro™ by D-Link

ENGLISH

Welcome admin! | Logout | Shutdown

### Create Local Backup Job

#### Local Backup Settings

Login Method:  Account  Anonymous

User Name:

Password:

Type:  (Dropdown menu with options: File, Folder)

Path:

Save To:

Incremental Backup

D-Link



ShareCenter Pro™ by D-Link

ENGLISH | Welcome admin! | Logout | Shutdown

Backup >> Remote Backup

Remote Backup Server | Remote Backup Job

### Remote Backup Server

Enable Remote Backup

Password:

Apply Cancel

D-Link

ShareCenter Pro™ by D-Link

ENGLISH | Welcome admin! | Logout | Shutdown

Backup >> Remote Backup

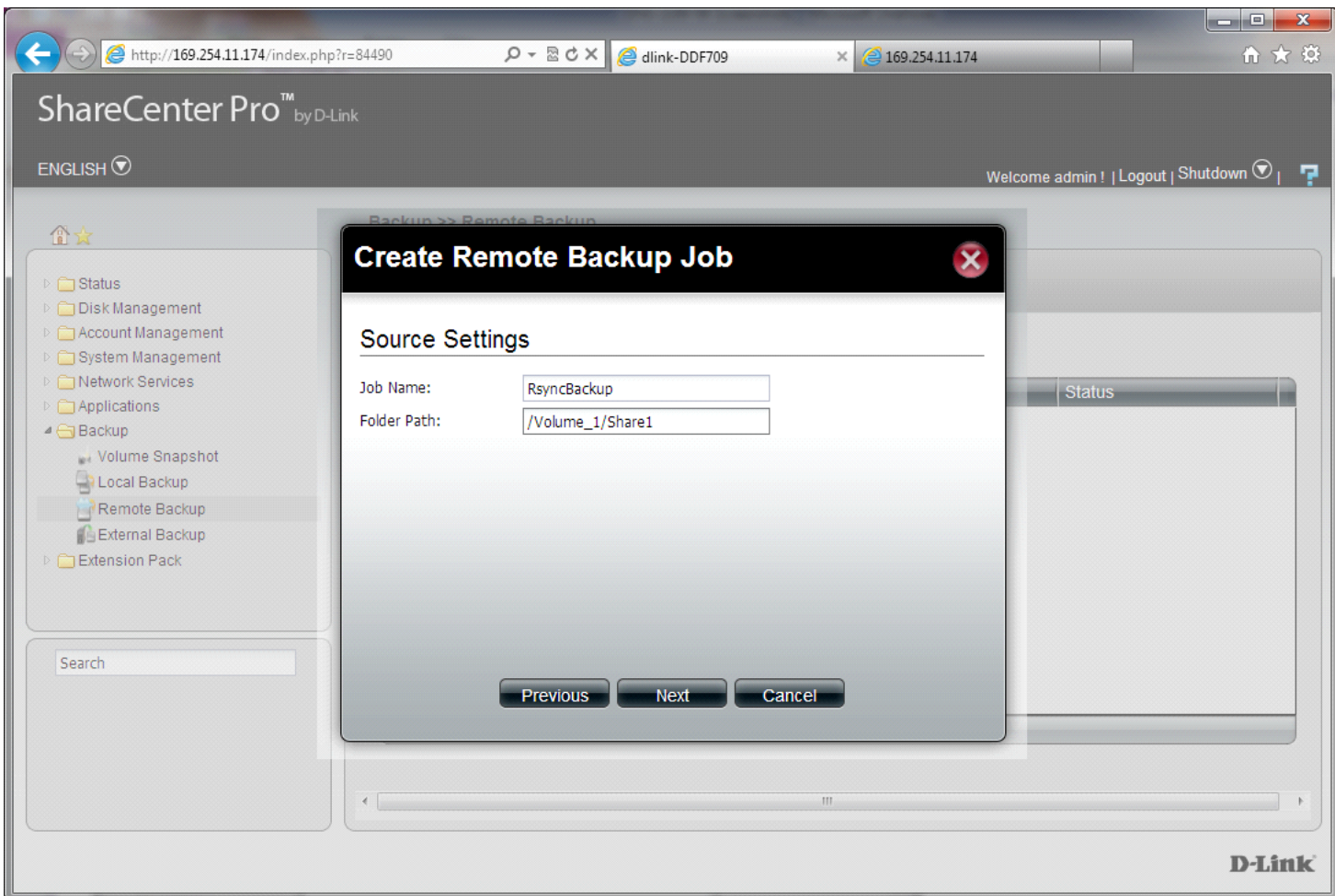
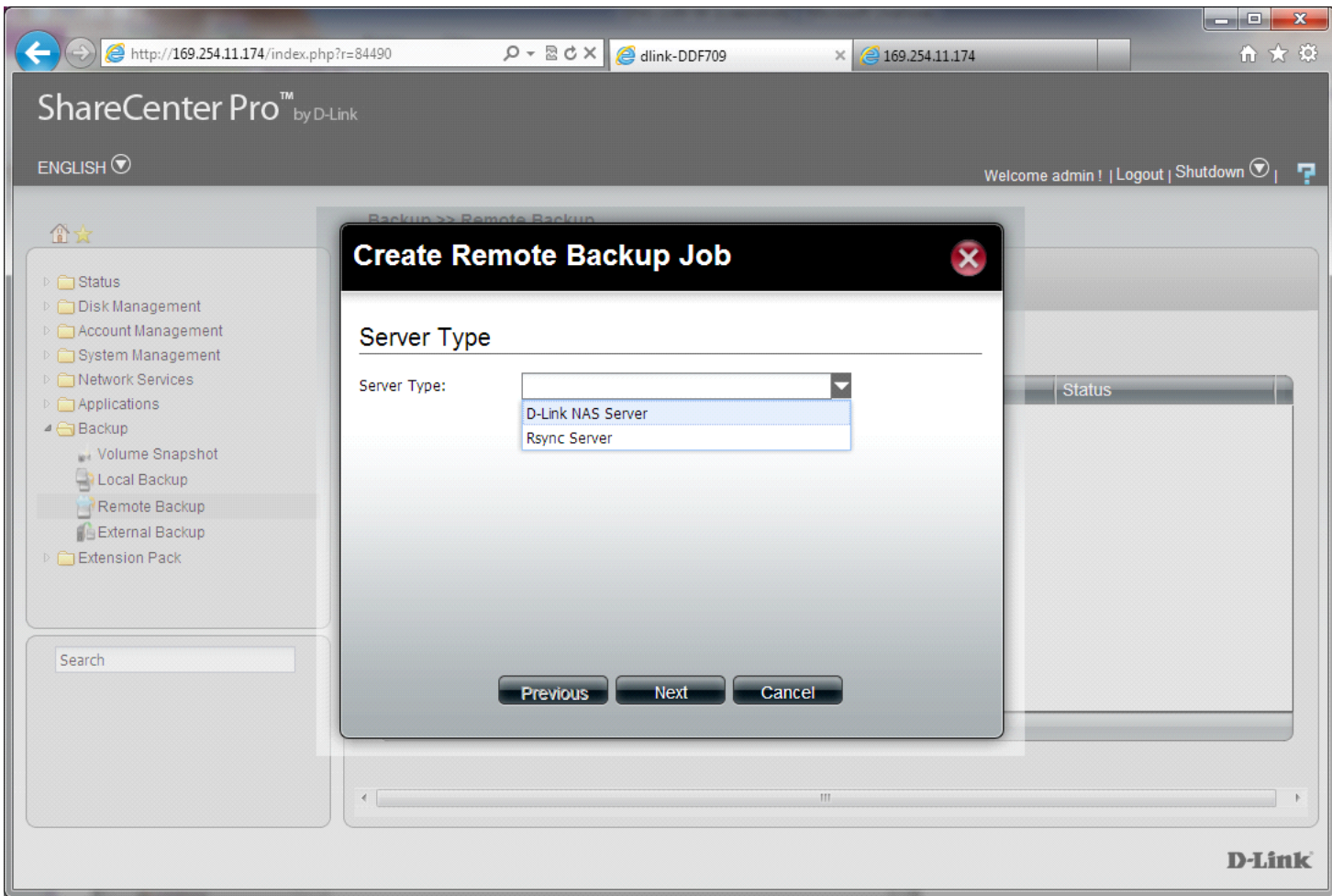
Remote Backup Server | Remote Backup Job

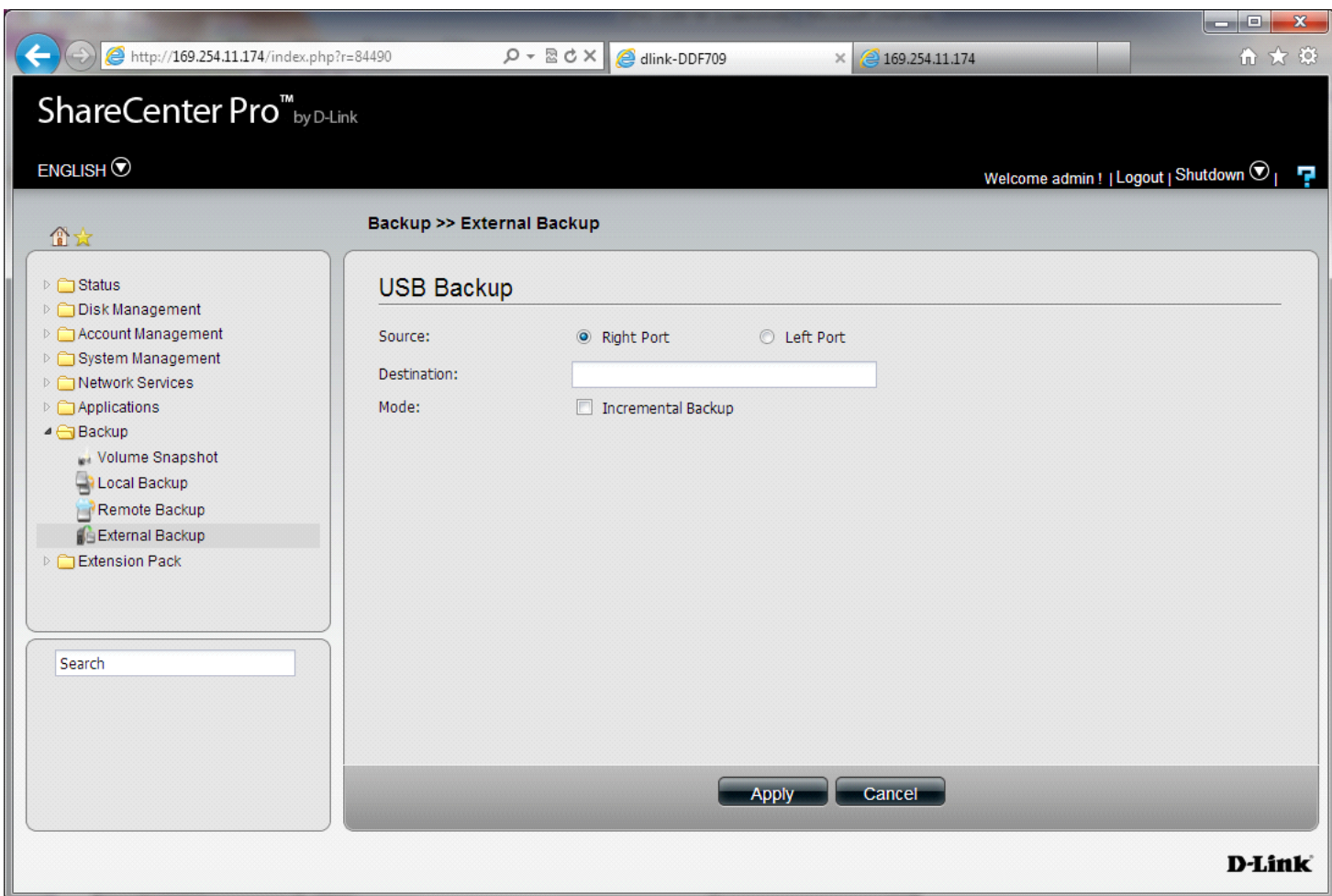
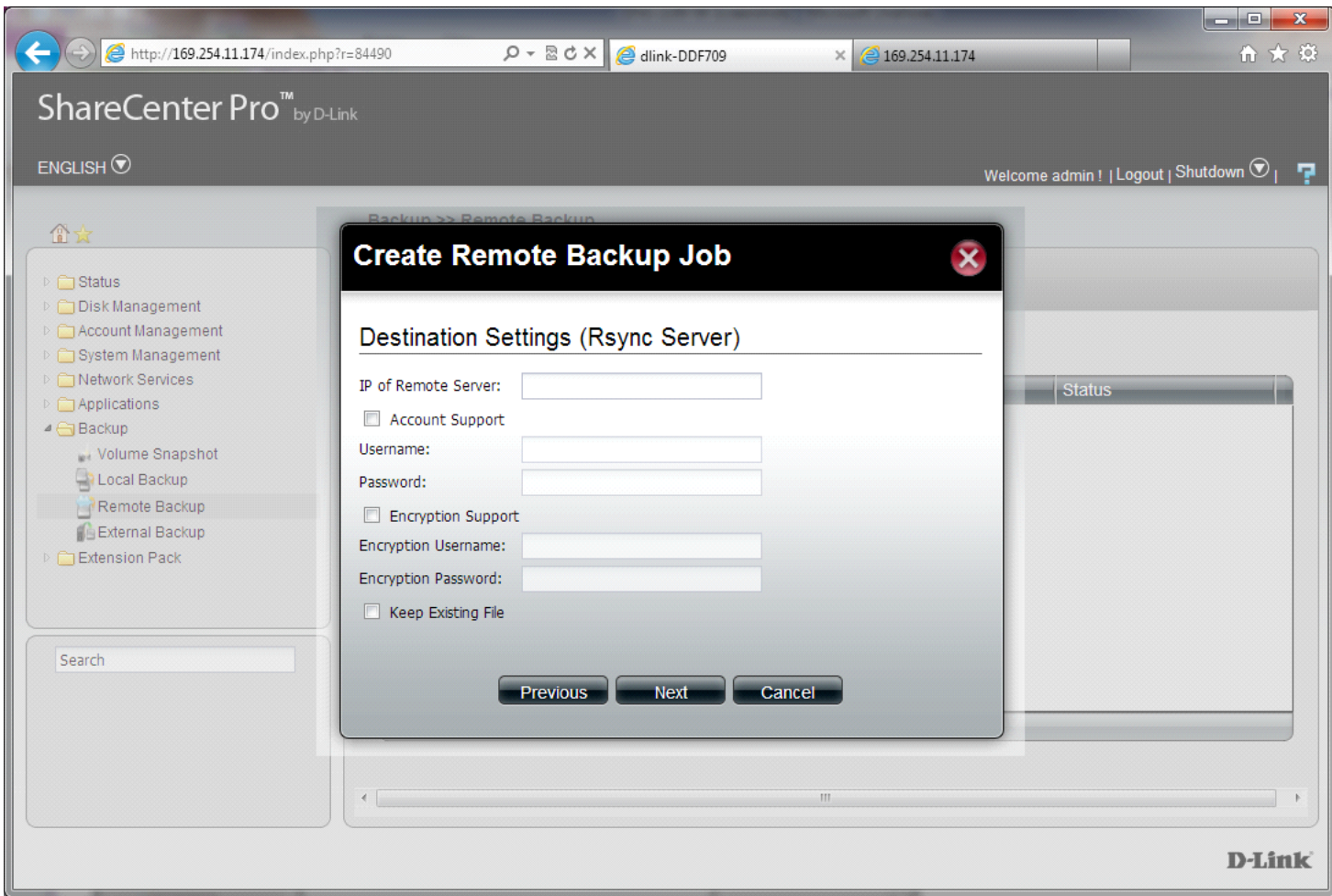
Create Edit Delete Backup Enable / Disable Schedule

| Job Name | Schedule | Status |
|----------|----------|--------|
|          |          |        |

Page 1 of 1

D-Link





ShareCenter Pro™ by D-Link

ENGLISH ▾

Welcome admin! | Logout | Shutdown ▾

Extension Pack >> Extension Pack

- ▶ Status
- ▶ Disk Management
- ▶ Account Management
- ▶ System Management
- ▶ Network Services
- ▶ Applications
- ▶ Backup
- ▶ Extension Pack
  - Extension Pack

Search

### Add-Ons Settings

File Path:

### Add-Ons List

Enabled
  Disabled

| Number | Module Name | Version | Status | Start / ... | Delete |
|--------|-------------|---------|--------|-------------|--------|
|        |             |         |        |             |        |

**D-Link**