

# D-Link® Quick Installation Guide

This product can be set up using any current web browser, i.e., Internet Explorer 5x, and Netscape Navigator 4x or above.



## DNS-300 Network Attached Storage

### Before You Begin

1. If you purchased this storage to share your file or media with other computers, you must use an Ethernet cable with a properly configured Internet environment.
2. For optimal security and convenience, we recommend designating a single computer to handle all DNS-300 configuration settings.
3. To help connect to the DNS-300 the first time, please see the D-Link Storage Configuration Utility section in the Appendix at the end of this Quick Installation Guide.

### Check Your Package Contents

These are the items included with your DNS-300 purchase:



**DNS-300 Network Attached Storage**



**CD-ROM (Containing Manual and Warranty)**



**Ethernet (CAT5 UTP/Straight Through) cable**



**12V DC Power Adapter**



Using a power supply with a different voltage rating will damage and void the warranty for this product.

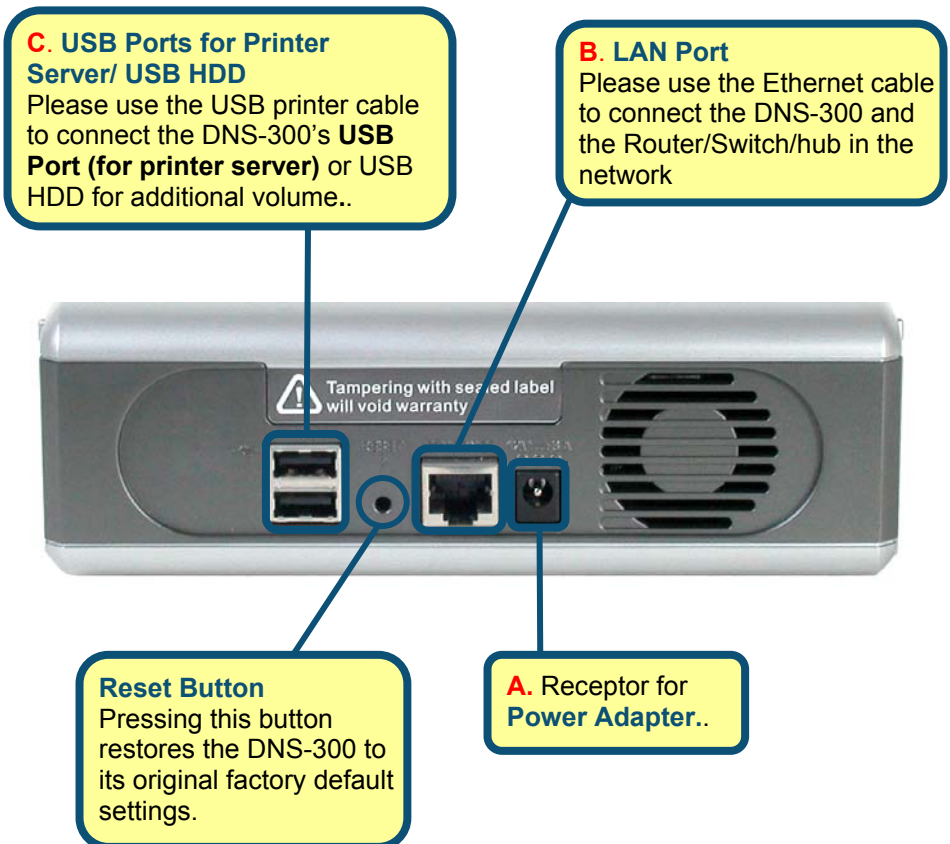
If any of the above items are missing, please contact your reseller.

©2005 D-Link Systems, Inc. All rights reserved. Trademarks or registered trademarks are the property of their respective holders. Software and specifications subject to change without notice.

# 1

## Connect the DNS-300 NAS To Your Network

- A** 、 First, connect the power adapter to the **receptor** at the back panel of the DNS-300 and then plug the other end of the power adapter to a wall outlet or power strip. The Power LED will turn ON to indicate proper operation.
- B** 、 Insert an Ethernet cable to LAN port on the back of the DNS-300 and an available Ethernet port on the network adapter in the router/switch/hub you will use to connect to the DNS-300. The LED light for LAN Port will illuminate to indicate proper connection. (Please use a straight-through cable to the LAN port) Please make sure that your Local Area Network is already working properly.
- C** 、 USB ports can connect to one USB printer and one USB hard disk. By connecting to USB printer, DNS-300 will become a printer server and by connecting to USB hard disk, users can expand one more volume of hard disk.



## 2

## The Descriptions of LEDs

### Local Network LED

Solid Light: While connected to LAN port  
Blinking: While transferring data  
Light off: Disconnected

### HDD-FULL

Solid Light: HD is completely full (100%)  
Blinking: HD is getting full ( 95% )  
Light off: In normal condition



### Power LED

Solid Light: Power on  
Light off : Power off

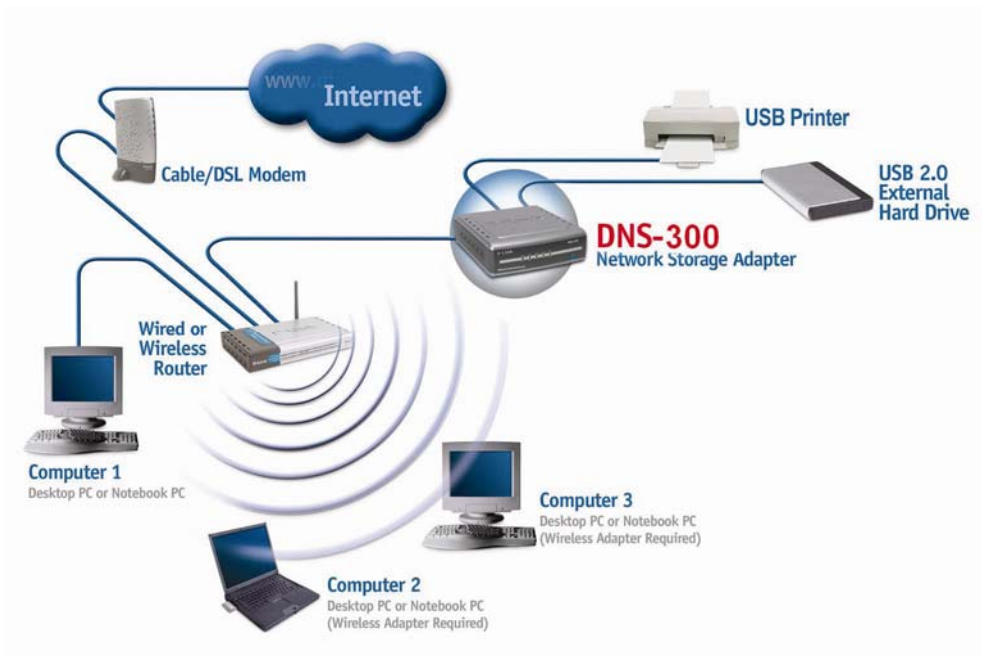
### HDD

Blinking: HD read/write  
Light off: HD no read/write

### USB

Solid Light: USB Flash/HDD connected  
Blinking: Receiving data  
Light off: No USB Flash/HDD connected

When you have completed the steps in this *Quick Installation Guide*, your connected network should look similar to this:



# 3

## Setting Up the Hard Disk Drive

**Step 1:** Loosen the screws on the back of the DNS-300.



**Step 2:** Remove the cover.



**Step 3:** Plug the IDE/ATA cable into the HDD.



**Step 4:** Connect the power connector to the HDD.



**Step 5:** Tighten the HDD to the metal bracket with the screws provided.



The DNS-300 packing materials include four screws, which are used in Step 5.



**Step 6:** Replace the cover and tighten the screws.



The DNS-300 is now ready to be plugged in and powered on.

# 4

## Formatting the Hard Disk Drive

If you are setting up the Hard Disk Drive for the first time, you need to format it by using the D-Link Storage Configuration Utility. See the second item in the Appendix at the back of this Quick Installation Guide for more detailed information about this program.

Follow these steps:

1. If you have not done so already, install the D-Link Storage Configuration Utility on your computer by inserting the DNS-300 CD-ROM in your CD drive and selecting the first item on the list.
2. Click the **D-Link Storage Configuration Utility** icon that was installed on your desktop.
3. Select “DNS-300” under the Device Name column in the **System Configuration** window (click **Refresh** if it doesn’t appear automatically).
4. Click **Manage**. This will cause your default Web browser to open the following window:

Create System HD

Click **Apply**

Click **OK**

The following window will be displayed:

# 5

## Using The Setup Wizard

### Enter the default IP

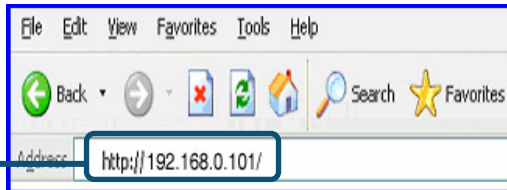
After DNS-300 installation, for each PC, the following items may need to be configured:

### Enter the default IP

After connecting the device running D-Link DNS-300 to the network and powering it on, you can start the initialization configuration by doing the following steps:

1. Open the browser.
2. Enter the system default IP “192.168.0.101” in the address bar.
3. Click “Go” to continue.

**Open your Web browser** and Type “192.168.0.101” into the URL address box. Then press the **Enter** or **Return** key.



### Enter the default user name and password

In the authentication dialogue please enter the default user “admin,” leave the password field blank, and click “OK.”

**Type “admin”** for the username and leave the password field blank.



**Click OK**

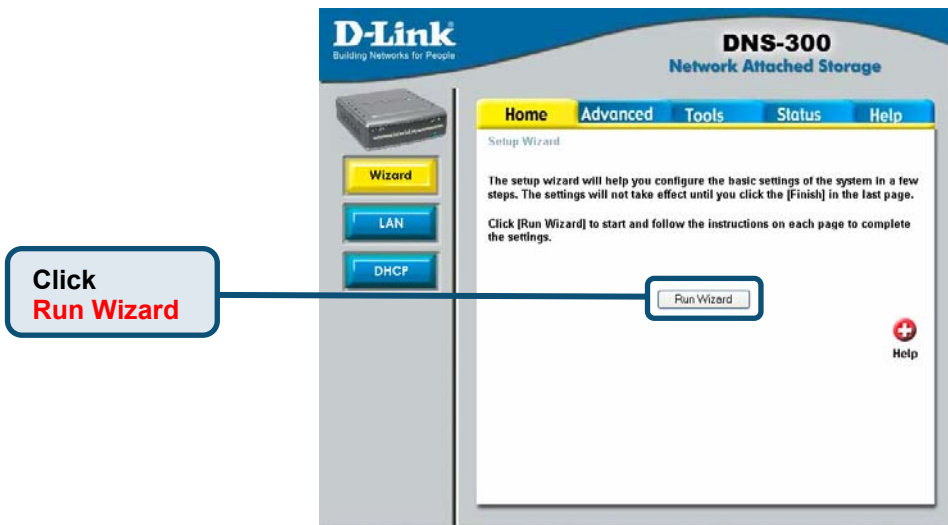


# 5

## The Setup Wizard (continued)

The setup wizard will help you configure the basic settings of the system in a few steps. The settings will not take effect until you click the [Finish] button in the last page.

Click the “Run Wizard” button to start.



### Enter system information

1. Enter the server name in the “Server name:” field so you can quickly access the storage of this system either from a Windows or a Mac OS by searching the server name.
2. Enter the new password. If you don’t enter a password, it will remain blank as the default value.
3. Click “Next.”



# 5

## The Setup Wizard (continued)

### Enter networking information

Since this is the first time you configure the system, the following networking settings will be adopted by default:

IP: 192.168.0.101

Subnet mask: 255.255.255.0

Default gateway: 192.168.0.1

DNS server: empty

You can modify the settings to fit your need.



If a DHCP server is available in the same network environment and you prefer to obtain the networking settings for the system from the DHCP server, change the “Get IP From” drop-down menu from *Manual* to *DHCP* and then click **Next**.

### Setup time settings

1. Select your time zone from the “Time zone” drop-down menu.
2. Choose to enable network time synchronization protocol (NTP) or manually set the system time.
3. Click “Next.”

# 5

## The Setup Wizard (continued)

**D-Link**  
Building Networks for People

**DNS-300**  
Network Attached Storage

Home Advanced Tools Status Help

Setup Wizard  
Steps System > LAN > Time > Network File Protocols

Time Zone  
GMT+08:00 Beijing, Chongqing, Hong Kong, Taipei

Enable network time synchronization  
Set device date and time manually

Period  
Daily

Network time server

Set device date and time  
Year: 2004 Month: Dec Day: 9  
Hour: 1 Minute: 33 Second: 37

Back Next Exit Help

Click **Next**

### Setup network file protocol

1. Determine the Workgroup and WINS server IP here. The Workgroup should be 0 to 14 English bytes.
2. Choose the Mac OS zone. A zone is a logical grouping of devices in an AppleTalk network. Select the zone from the dropping down menu.
3. Choose the appropriate encoding from the “code page” drop-down menu so the clients that don’t have Unicode support installed can correctly access the system.
4. Click “Finish” for the settings to take effect.

**D-Link**  
Building Networks for People

**DNS-300**  
Network Attached Storage

Home Advanced Tools Status Help

Setup Wizard  
Steps System > LAN > Time > Network File Protocols

Windows Workgroup Setting  
Workgroup: WORKGROUP

MAC OS zone settings  
AppleTalk Zone: No zones available

Encoding Codepage: Traditional Chinese

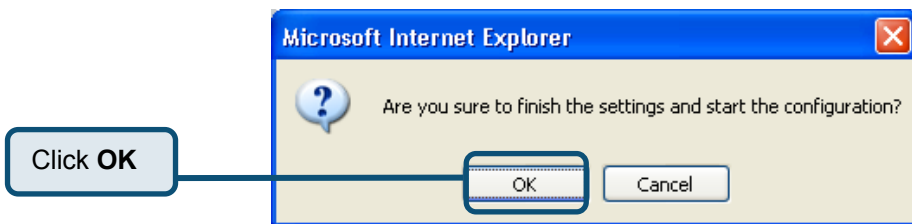
Back Finish Exit Help

Click **Finish**

# 6

## Your Setup is Complete!

Finish the settings

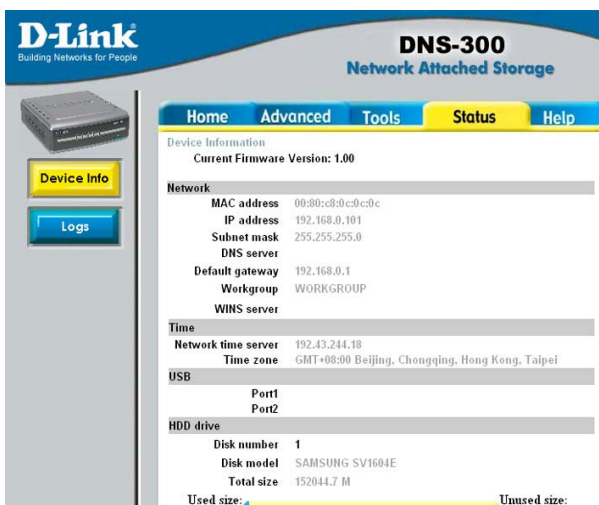


Click the “OK” button in the pop-up dialogue.

The following window will be displayed to indicate the DNS-300 is preparing your new settings:



The page will then be directed to the summary page so you can review the settings that have been set.



# Appendix

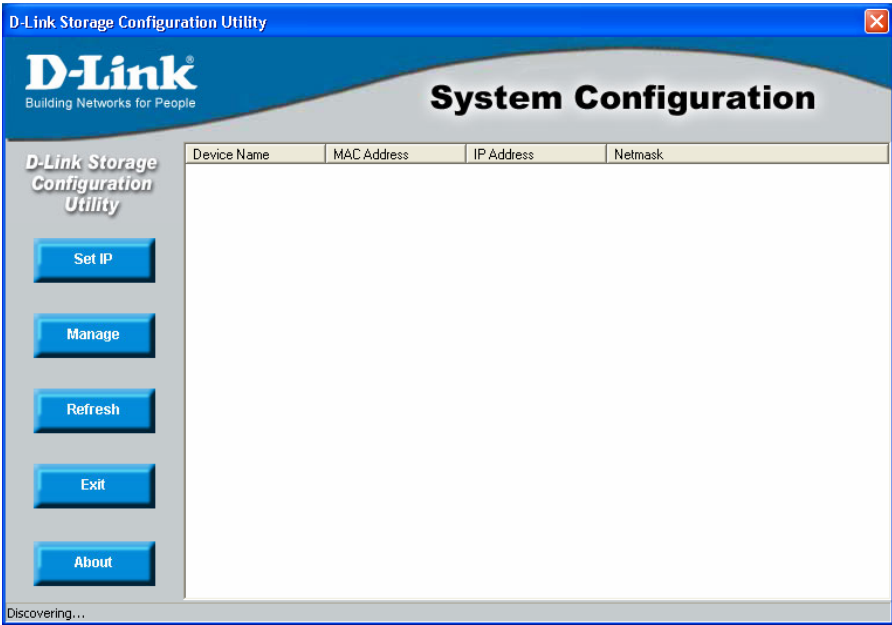
## How to Use the D-Link Storage Utility to Connect to the DNS-300

The D-Link Storage Utility is a tool that helps you to initially connect to and then manage the DNS-300 Network Attached Storage device. This Utility is also used to format the Hard Disk Drive (please see section four of this Quick Installation Guide).

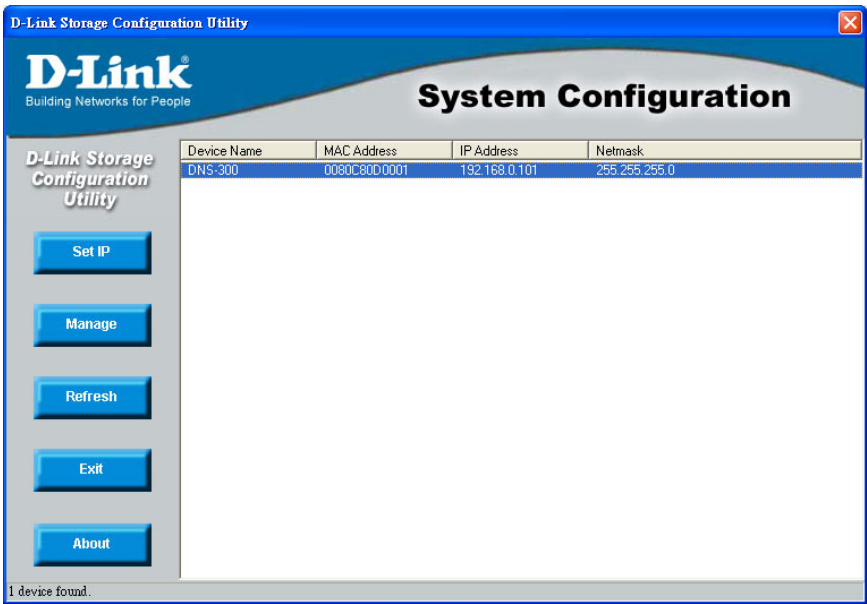
To copy the D-Link Storage Utility from the CD-ROM to your PC, simply place the auto-run CD-ROM that came with your DNS-300 in the CD drive of your computer and then select the first item in the list, "Storage Configuration Utility." This executable file will be placed on your desktop. The following icon will appear:



Click the **D-Link Storage Utility** icon on your desktop to open the following **System Configuration** window:



If your DNS-300 does not appear, click **Refresh**. All DNS-300 devices currently on your network should appear in the following window:



**Note:** The default IP address of the DNS-300 is 192.168.0.101.

You now are able to connect to the DNS-300 by highlighting it from the list in the **System Configuration** window above.

To change the IP address, click the **Set IP** button on the **System Configuration** window. Enter the appropriate information in the following pop-up dialog displayed below and then click **OK**. Please note that there is no default access password.

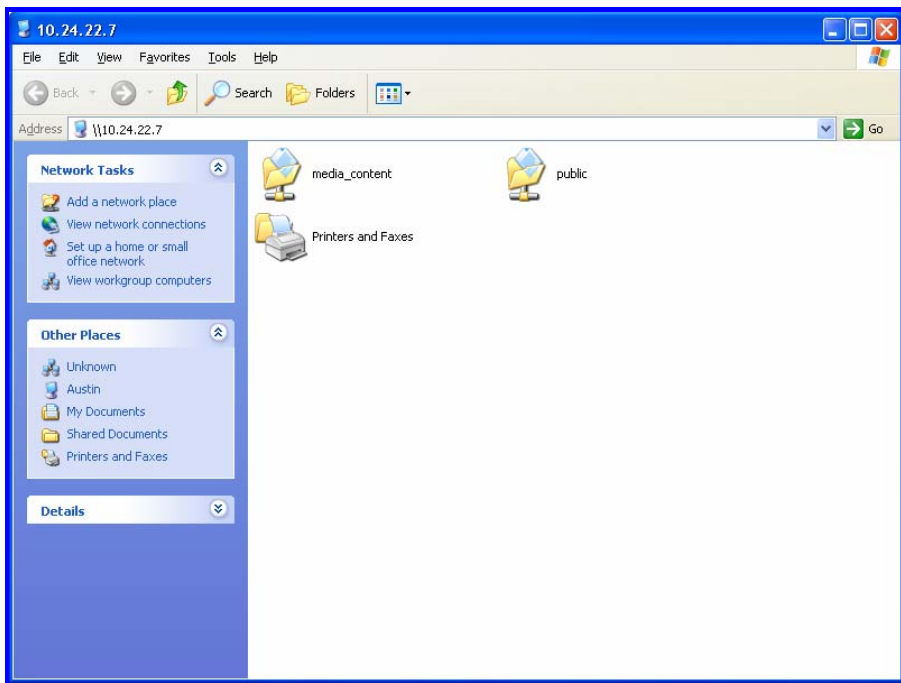
The 'Set IP and Netmask' dialog box has a title bar with a close button. It contains three input sections: 'IP Address' with four numeric fields containing 10, 24, 22, and 7; 'Netmask' with four numeric fields containing 255, 0, 0, and 0; and 'Access password' with a text input field. At the bottom are 'OK' and 'Cancel' buttons.

IP Address:	10	24	22	7
Netmask:	255	0	0	0
Access password:	<input type="text"/>			

To open the default file folders provided for the user account, double-click it from the list in the **System Configuration** window. A network dialog will open:



Enter “guest” for the user name and leave the password blank. Click **OK**. The following window will open:



Please note that in order for media files to be displayed, they must be placed in the “media\_content” folder rather than the “public” folder.

Clicking the **Manage** button on the **System Configuration** window will cause your browser to open.

**Note:** For more detailed information about how to configure the DNS-300, please see the *Manual* that was included on the CD-ROM that accompanied your device.

# Technical Support

You can find software updates and user documentation on the D-Link websites.

D-Link provides free technical support for customers within Canada, the United Kingdom, and Ireland.

Customers can contact D-Link technical support through our websites, or by phone.

## For Customers within The United Kingdom & Ireland:

### ***D-Link UK & Ireland Technical Support over the Telephone:***

(08456 12 0003 (United Kingdom)

+44 8456 12 0003 (Ireland)

Monday to Friday 8:00 am to 10:00 pm GMT

Sat & Sun 10.00 am to 7.00 pm GMT

### ***D-Link UK & Ireland Technical Support over the Internet:***

<http://www.dlink.co.uk>

<ftp://ftp.dlink.co.uk>

## For Customers within Canada:

### ***D-Link Canada Technical Support over the Telephone:***

1-800-361-5265 (Canada)

Monday to Friday 7:30 am to 12:00 am EST

### ***D-Link Canada Technical Support over the Internet:***

<http://support.dlink.ca>

email: [support@dlink.ca](mailto:support@dlink.ca)