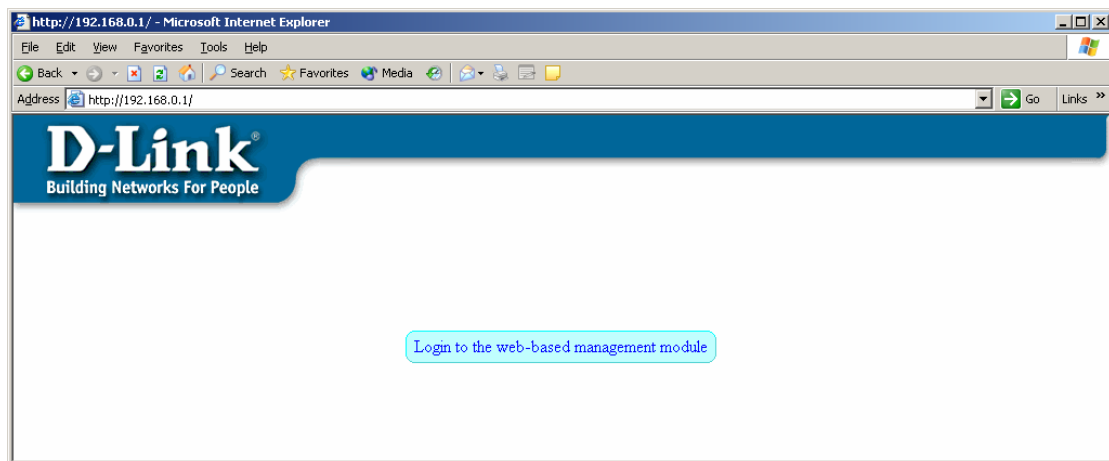
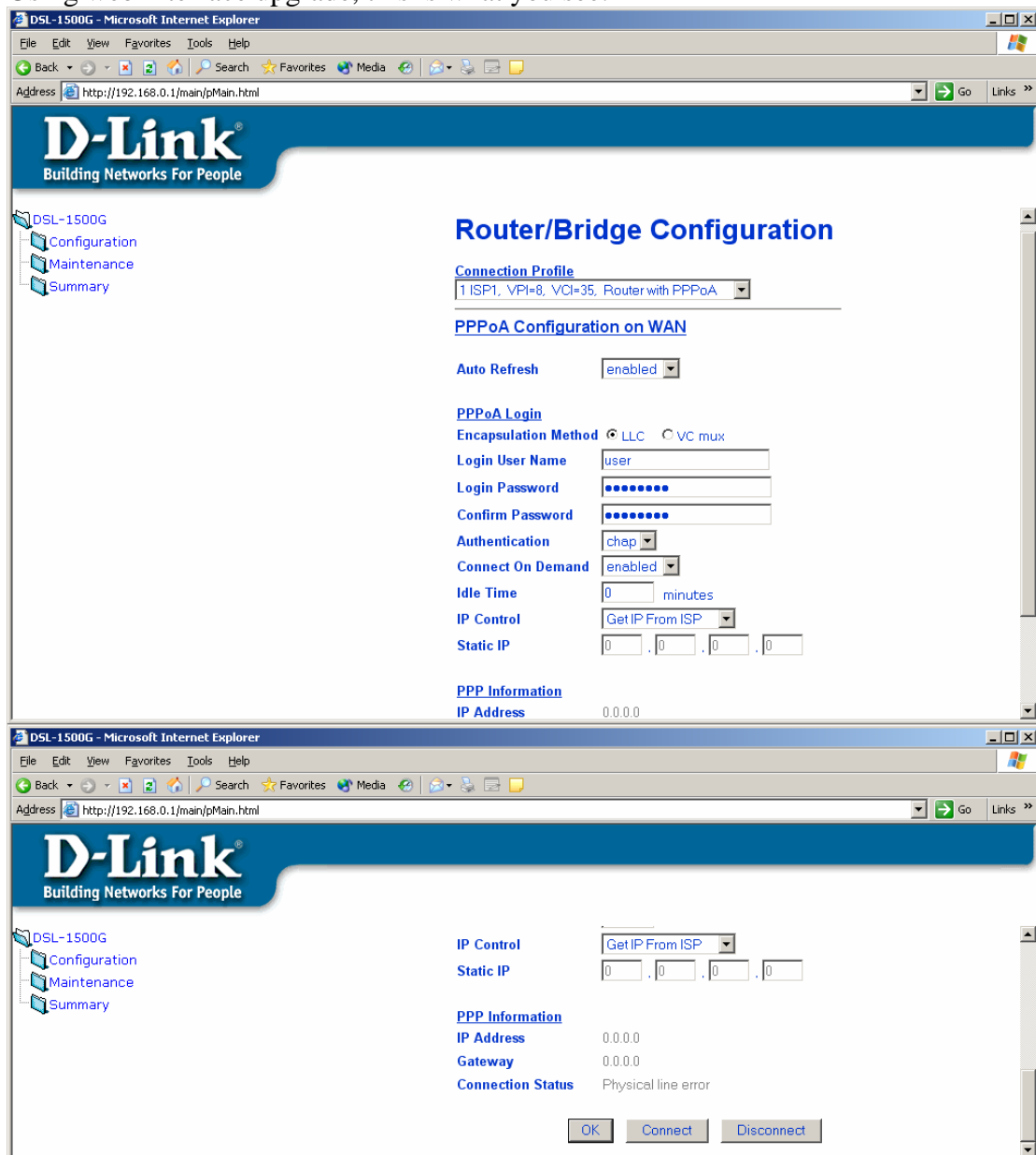


DSL1500GupgR22115B2t28au captures



Using web interface upgrade, this is what you see:



Using Utility, this is what you see.

DSL-1500G - Microsoft Internet Explorer

File Edit View Favorites Tools Help

Back Forward Stop Home Search Favorites Media

Address http://192.168.0.1/main/pMain.html Go Links >>

D-Link
Building Networks For People

DSL-1500G
Configuration
Maintenance
Summary

Router/Bridge Configuration

Connection Profile
1 AU_PPPoE, VPI=8, VCI=35, Router with PPPoE

PPPoE Configuration on WAN

Auto Refresh

PPPoE Login
Encapsulation Method LLC

Login User Name

Login Password

Confirm Password

Authentication

Connect On Demand

Idle Time minutes

IP Control

Static IP . . .

PPP Information

IP Address 0.0.0.0

Gateway 0.0.0.0

Connection Status Physical line error

OK Connect Disconnect

DSL-1500G - Microsoft Internet Explorer

File Edit View Favorites Tools Help

Back Forward Stop Home Search Favorites Media

Address http://192.168.0.1/main/pMain.html Go Links >>

D-Link
Building Networks For People

DSL-1500G
Configuration
Maintenance
Summary

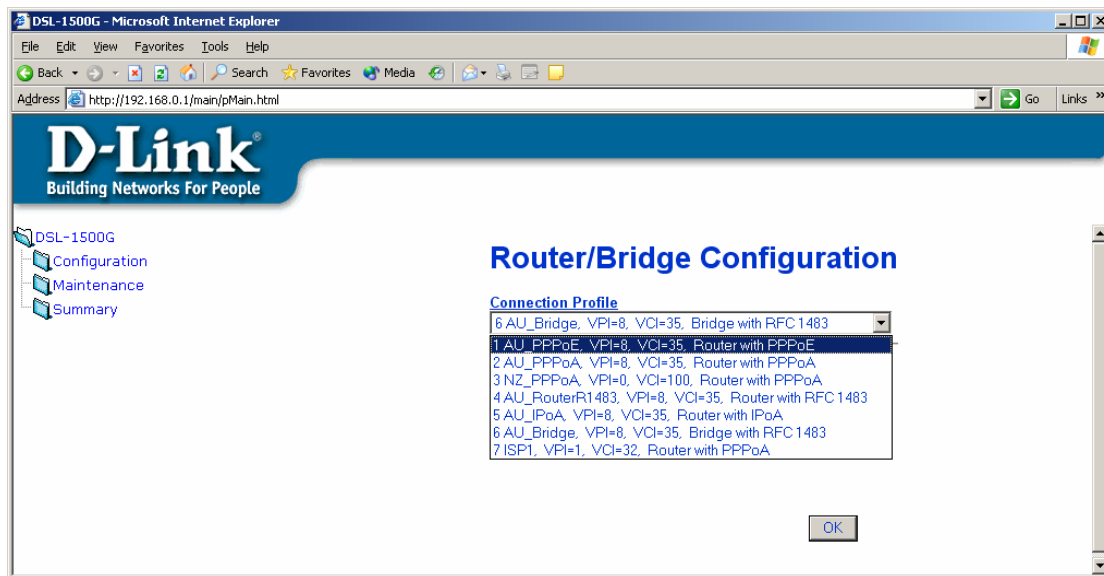
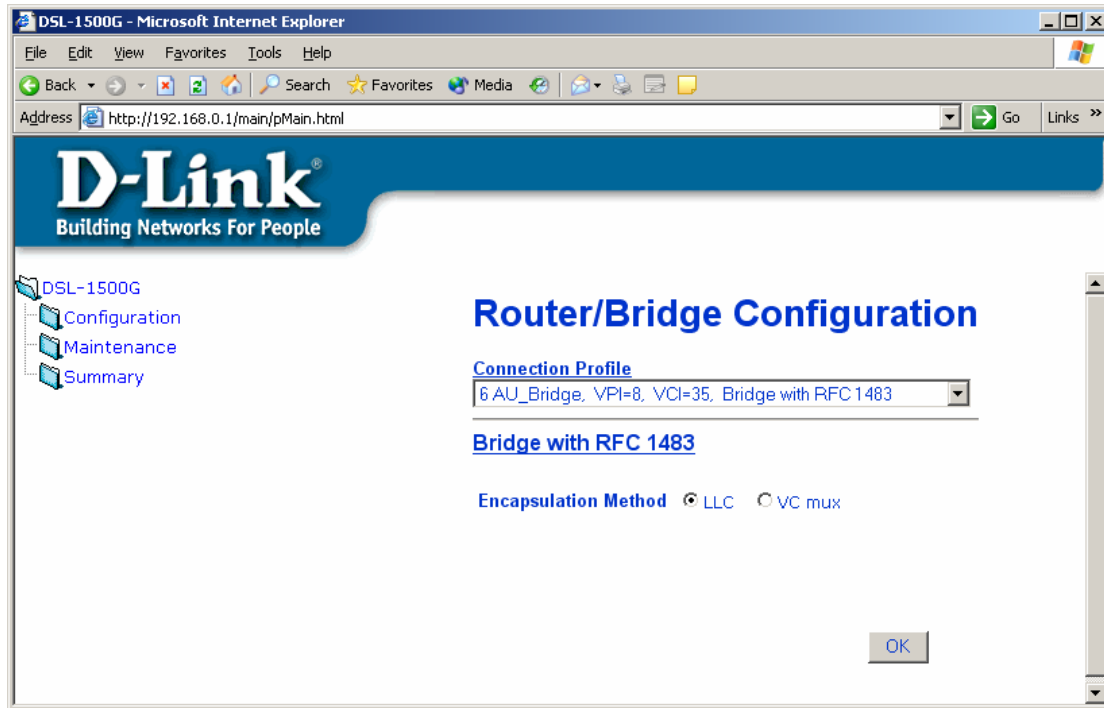
Router/Bridge Configuration

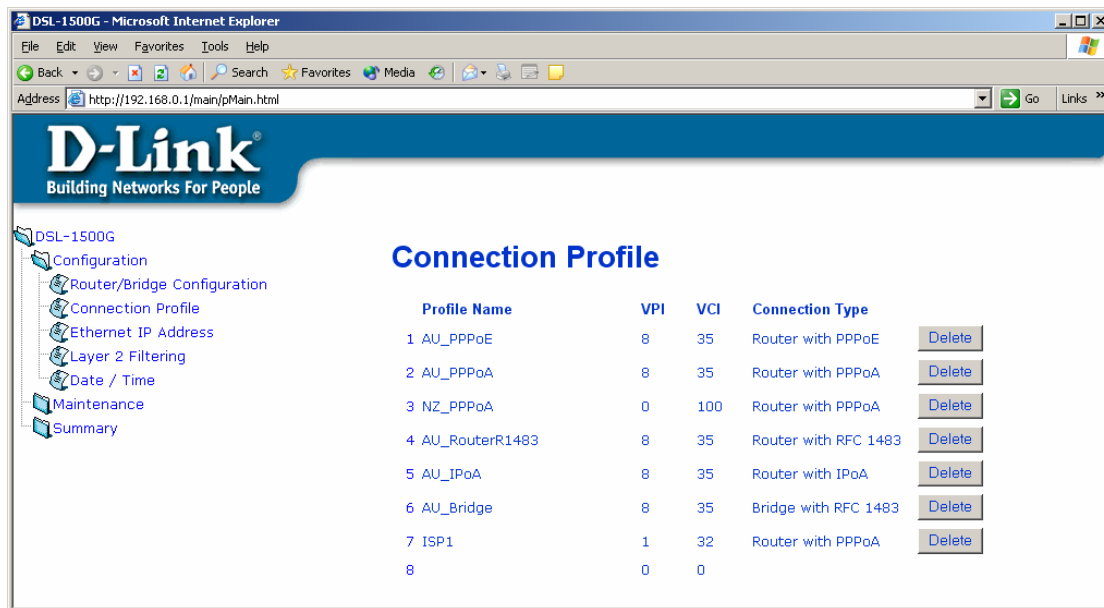
Connection Profile
6 AU_Bridge, VPI=8, VCI=35, Bridge with RFC 1483

Bridge with RFC 1483

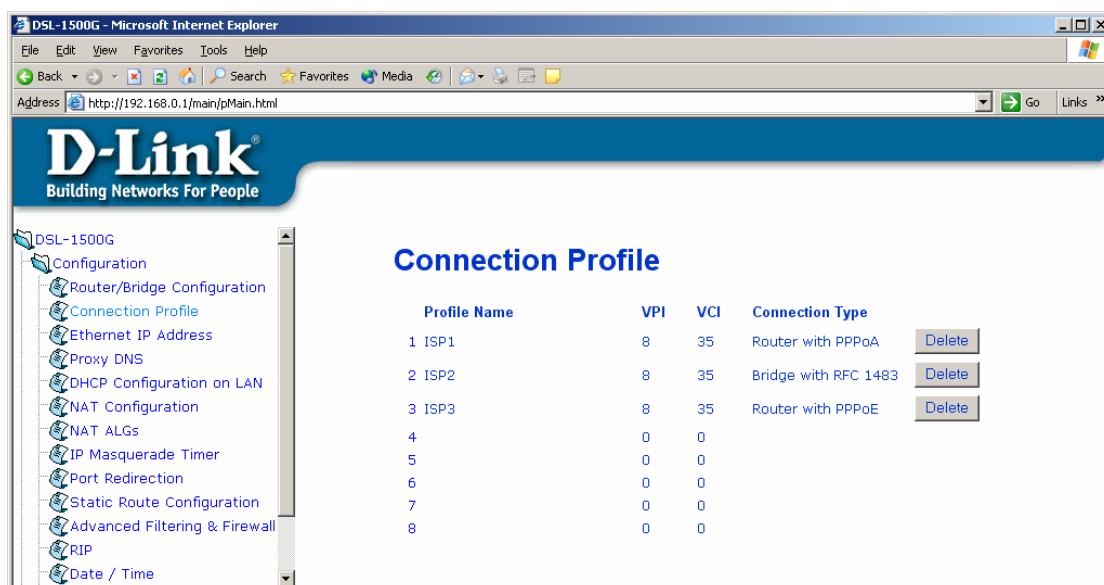
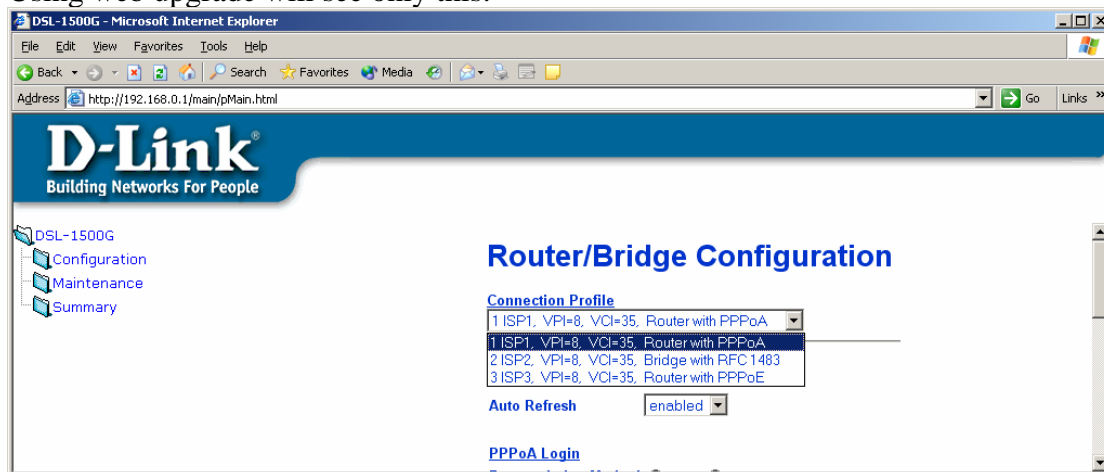
Encapsulation Method ☒ LLC ☐ VC mux

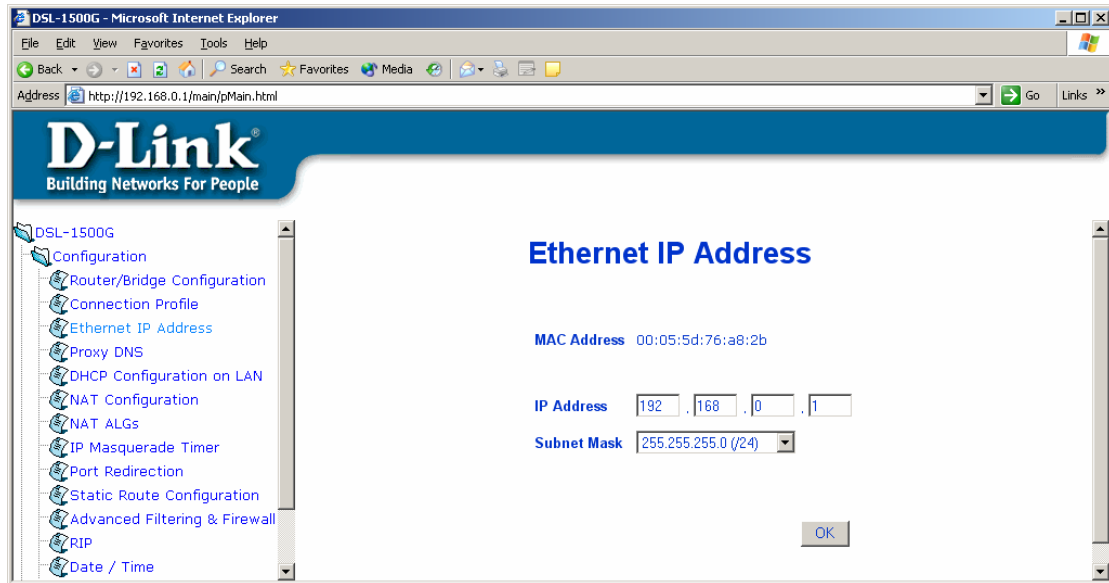
OK



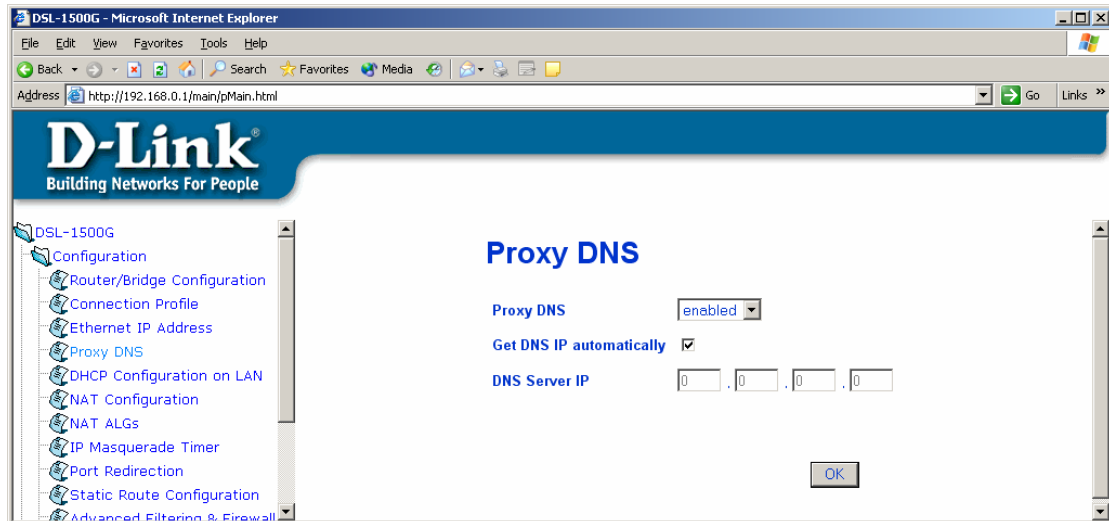


Using web upgrade will see only this:





255.0.0.0 to 255.255.255.252



DSL-1500G - Microsoft Internet Explorer

File Edit View Favorites Tools Help

Back Forward Stop Search Favorites Media

Address http://192.168.0.1/main/pMain.html Go Links >>

D-Link®

Building Networks For People

DSL-1500G

- Configuration
 - Router/Bridge Configuration
 - Connection Profile
 - Ethernet IP Address
 - Proxy DNS
 - DHCP Configuration on LAN
 - NAT Configuration
 - NAT ALGs
 - IP Masquerade Timer
 - Port Redirection
 - Static Route Configuration
 - Advanced Filtering & Firewall
 - RIP
 - Date / Time
 - UPnP Configuration
 - Maintenance
 - Summary

DHCP Configuration on LAN

Start IP Address 192 . 168 . 0 . 2

End IP Address 192 . 168 . 0 . 33

Netmask 255.255.255.0 (/24)

Default Gateway 192 . 168 . 0 . 1

Leased Time 72 hour

Primary DNS 192 . 168 . 0 . 1

Secondary DNS 0 . 0 . 0 . 0

Primary WINS 0 . 0 . 0 . 0

Secondary WINS 0 . 0 . 0 . 0

Domain Name

State enabled

OK

DSL-1500G - Microsoft Internet Explorer

File Edit View Favorites Tools Help

Back Forward Stop Search Favorites Media

Address http://192.168.0.1/main/pMain.html Go Links >>

D-Link®

Building Networks For People

DSL-1500G

- Configuration
 - Router/Bridge Configuration
 - Connection Profile
 - Ethernet IP Address
 - Proxy DNS
 - DHCP Configuration on LAN
 - NAT Configuration
 - NAT ALGs
 - IP Masquerade Timer
 - Port Redirection

NAT Configuration

NAT Function enabled

DMZ State disabled

DMZ IP Address 0 . 0 . 0 . 0

OK

DSL-1500G - Microsoft Internet Explorer

File Edit View Favorites Tools Help

Back Forward Stop Search Favorites Media

Address http://192.168.0.1/main/pMain.html Go Links >>

D-Link®

Building Networks For People

DSL-1500G

- Configuration
 - Router/Bridge Configuration
 - Connection Profile
 - Ethernet IP Address
 - Proxy DNS
 - DHCP Configuration on LAN
 - NAT Configuration
 - NAT ALGs
 - IP Masquerade Timer
 - Port Redirection
 - Static Route Configuration
 - Advanced Filtering & Firewall
 - RIP

NAT ALGs

☒ H.323

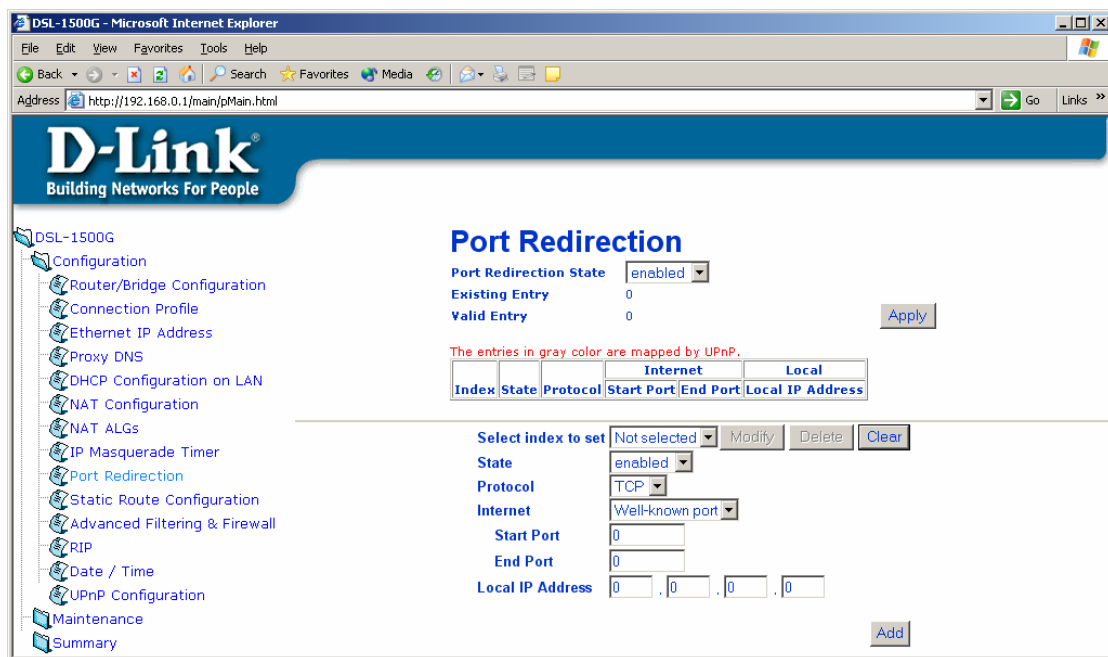
☒ IPsec

☒ PPTP

☒ ICQ (audio)

☐ SIP (video/audio/white board/remote control)

OK



DSL-1500G - Microsoft Internet Explorer

File Edit View Favorites Tools Help

Back Forward Stop Search Favorites Media

Address http://192.168.0.1/main/pMain.html Go Links >>

D-Link®

Building Networks For People

DSL-1500G

- Configuration
 - Router/Bridge Configuration
 - Connection Profile
 - Ethernet IP Address
 - Proxy DNS
 - DHCP Configuration on LAN
 - NAT Configuration
 - NAT ALGs
 - IP Masquerade Timer
 - Port Redirection
 - Static Route Configuration
 - Advanced Filtering & Firewall
 - RIP
 - Date / Time
 - UPnP Configuration
- Maintenance
- Summary

Static Route Configuration

Existing Entry 0
Valid Entry 0 [Apply](#)

Index	State	Item Name	IP Address/Subnet Mask	Gateway	Interface	Metric
-------	-------	-----------	------------------------	---------	-----------	--------

Select index to set: [Modify](#) [Delete](#) [Clear](#)

Interface:

Item Name:

State:

IP Address:

Subnet Mask:

Gateway:

Metric: [Add](#)

DSL-1500G - Microsoft Internet Explorer

File Edit View Favorites Tools Help

Back Forward Stop Search Favorites Media

Address http://192.168.0.1/main/pMain.html Go Links >>

D-Link®

Building Networks For People

DSL-1500G

- Configuration
 - Router/Bridge Configuration
 - Connection Profile
 - Ethernet IP Address
 - Proxy DNS
 - DHCP Configuration on LAN
 - NAT Configuration
 - NAT ALGs
 - IP Masquerade Timer
 - Port Redirection
 - Static Route Configuration
 - Advanced Filtering & Firewall
 - RIP
 - Date / Time
 - UPnP Configuration
- Maintenance
- Summary

Advanced Filtering & Firewall

Existing Entry 0 IP Filter State
Valid Entry 0 If not matched [Apply](#)

Index	State	Item Name	Pass or Block	Direction	Protocol	Source			Destination		
						IP Address/Subnet Mask	Start Port	End Port	IP Address/Subnet Mask	Start Port	End Port

Select index to set: [Modify](#) [Delete](#) [Clear](#)

Item Name:

State:

Pass or Block:

Direction:

Protocol:

Source

IP Address:

Subnet Mask:

Start Port:

End Port:

Destination

IP Address:

Subnet Mask:

DSL-1500G - Microsoft Internet Explorer

File Edit View Favorites Tools Help

Back Forward Stop Search Favorites Media

Address http://192.168.0.1/main/pMain.html Go Links >>

D-Link®

Building Networks For People

DSL-1500G

- Configuration
 - Router/Bridge Configuration
 - Connection Profile
 - Ethernet IP Address
 - Proxy DNS
 - DHCP Configuration on LAN
 - NAT Configuration
 - NAT ALGs
 - IP Masquerade Timer
 - Port Redirection
 - Static Route Configuration
 - Advanced Filtering & Firewall
 - RIP
 - Date / Time
 - UPnP Configuration
 - Maintenance
 - Summary

Advanced Filtering & Firewall

Existing Entry 0 IP Filter State disabled

Valid Entry 0 If not matched Pass Apply

Index	State	Item Name	Pass or Block	Direction	Protocol	Source			Destination		
						IP Address/Subnet Mask	Start Port	End Port	IP Address/Subnet Mask	Start Port	End Port
<div>Start Port 0</div> <div>End Port 0</div> <div>Destination IP Address 0.0.0.0</div> <div>Subnet Mask 0.0.0.0 (/0)</div> <div>=</div> <div>Start Port 0</div> <div>End Port 0</div> <div>Select index to add/move New Add Move</div> <div>(Insert the entry before the selected index)</div>											

DSL-1500G - Microsoft Internet Explorer

File Edit View Favorites Tools Help

Back Forward Stop Search Favorites Media

Address http://192.168.0.1/main/pMain.html Go Links >>

D-Link®

Building Networks For People

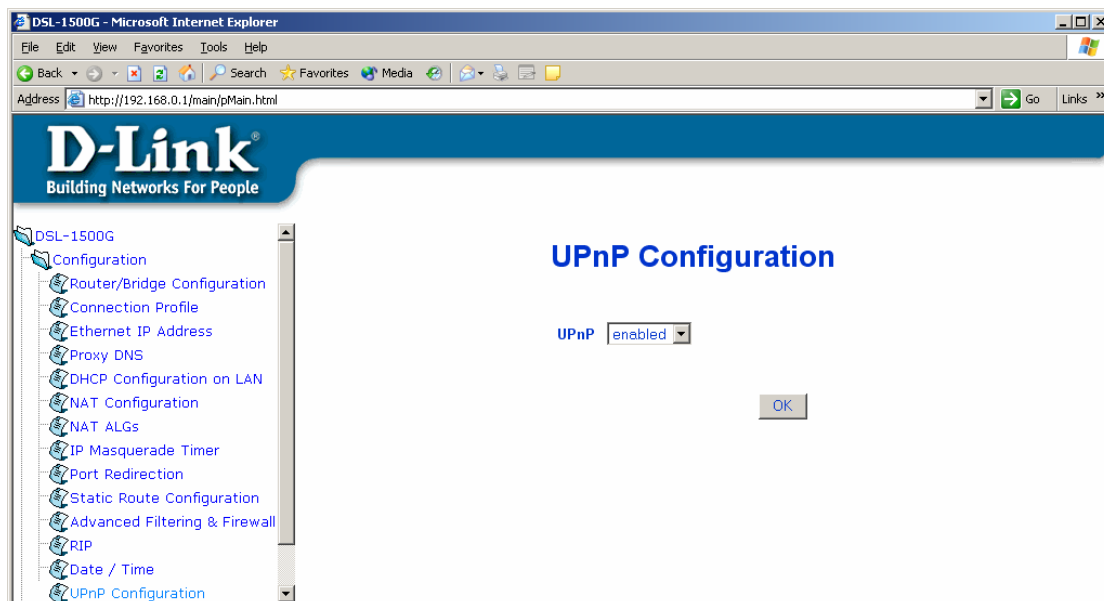
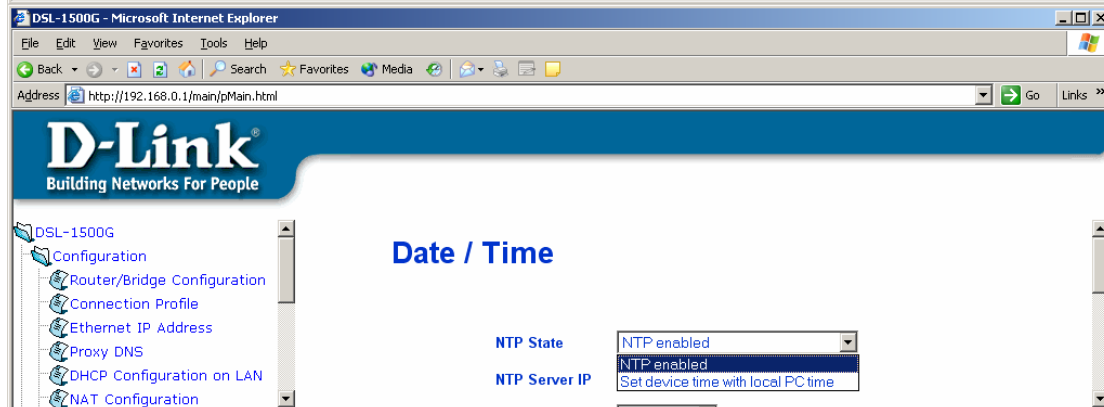
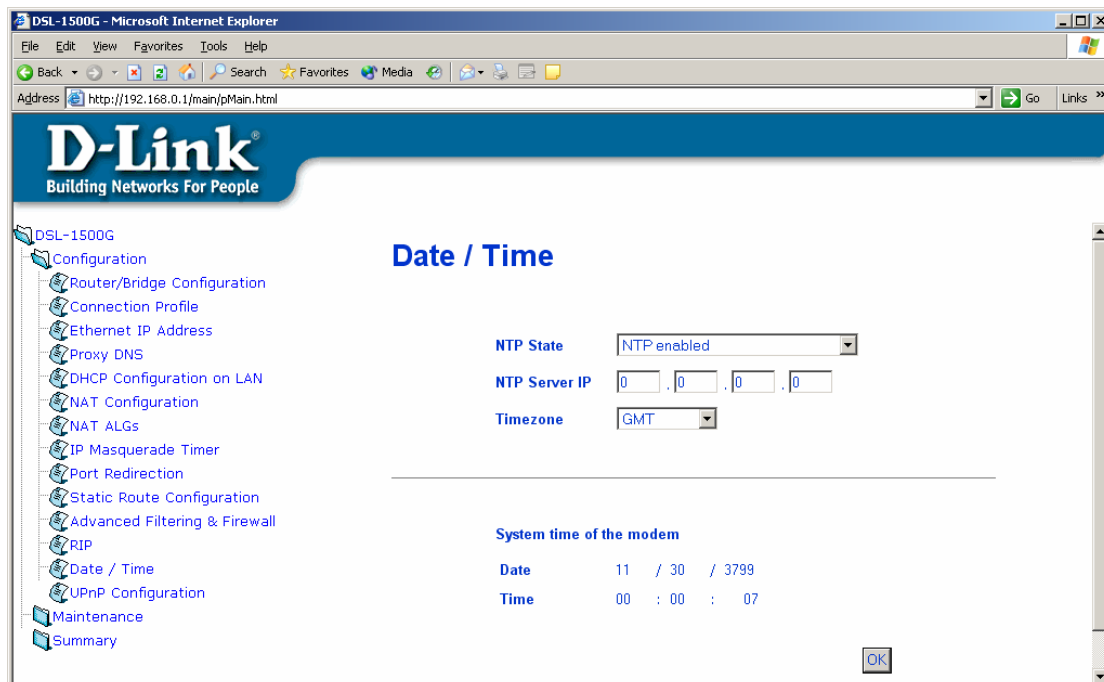
DSL-1500G

- Configuration
 - Router/Bridge Configuration
 - Connection Profile
 - Ethernet IP Address
 - Proxy DNS
 - DHCP Configuration on LAN
 - NAT Configuration
 - NAT ALGs
 - IP Masquerade Timer
 - Port Redirection
 - Static Route Configuration
 - Advanced Filtering & Firewall
 - RIP
 - Date / Time
 - UPnP Configuration

RIP

	Version	RIP
LAN	<input type="radio"/> RIPv1 <input type="radio"/> RIPv2	<input type="radio"/> On <input checked="" type="radio"/> Off
WAN	<input type="radio"/> RIPv1 <input type="radio"/> RIPv2	<input type="radio"/> On <input checked="" type="radio"/> Off

OK



DSL-1500G - Microsoft Internet Explorer

File Edit View Favorites Tools Help

Back Forward Stop Search Favorites Media

Address http://192.168.0.1/main/pMain.html Go Links >>

D-Link
Building Networks For People

DSL-1500G
Configuration
Maintenance
ATM Loopback Test
System Username and Passwon
Save Changes
Factory Reset
Update Firmware
Configuration Maintenance
Remote Administration Access
SHDSL Line Setting
Event Log
Ping
Diagnose
Summary

ATM Loopback Test

VPI

VCI

F4/F5

etoe/segment

Status

Loop Test

DSL-1500G - Microsoft Internet Explorer

File Edit View Favorites Tools Help

Back Forward Stop Search Favorites Media

Address http://192.168.0.1/main/pMain.html Go Links >>

D-Link
Building Networks For People

DSL-1500G
Configuration
Maintenance
ATM Loopback Test
System Username and Passw
Save Changes
Factory Reset
Update Firmware
Configuration Maintenance
Remote Administration Acces
SHDSL Line Setting
Event Log

System Username and Password

User Name

Old Password

New Password

Confirm New Password

OK

DSL-1500G - Microsoft Internet Explorer

File Edit View Favorites Tools Help

Back Forward Stop Search Favorites Media

Address http://192.168.0.1/main/pMain.html Go Links >>

D-Link
Building Networks For People

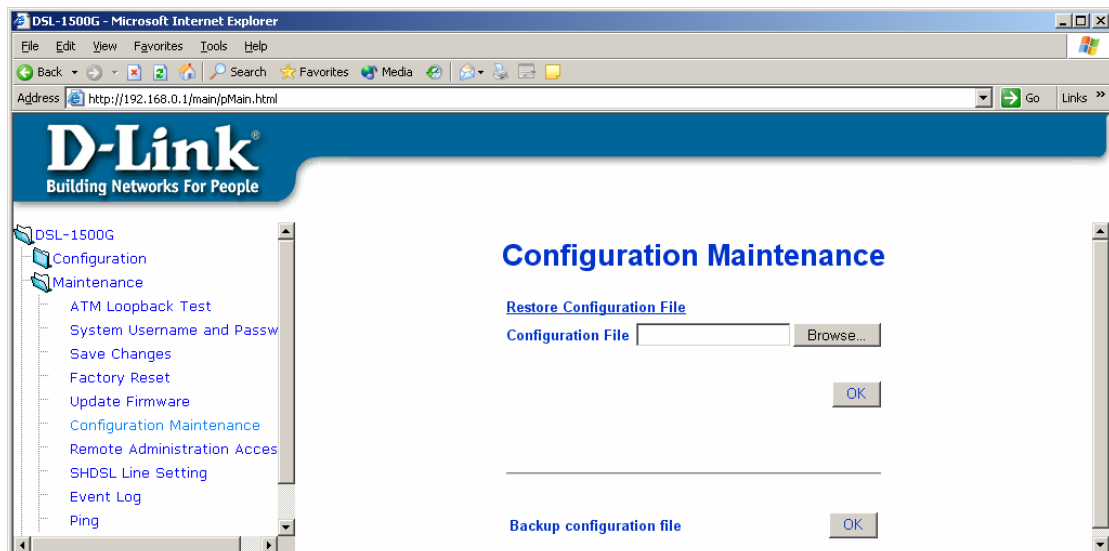
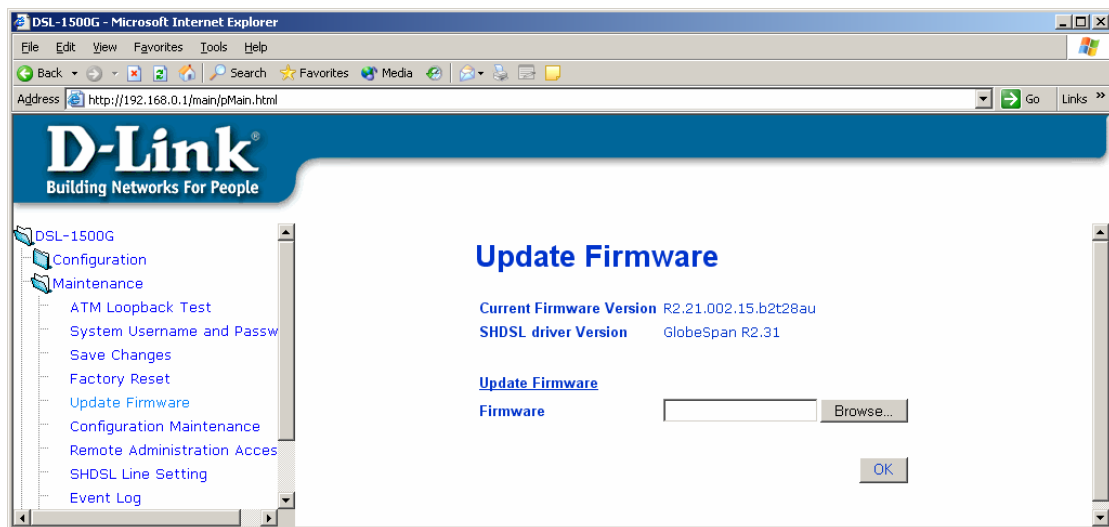
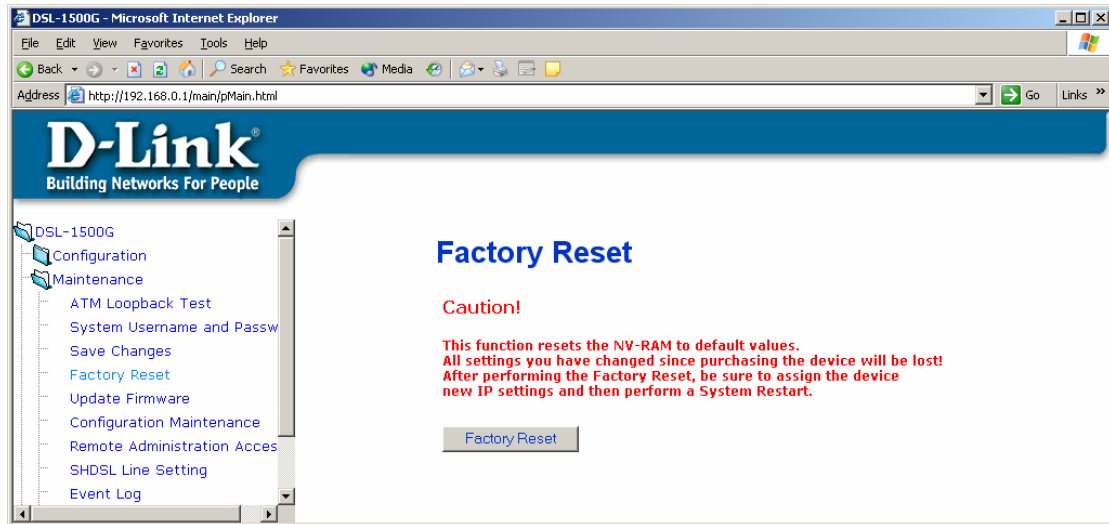
DSL-1500G
Configuration
Maintenance
ATM Loopback Test
System Username and Passw
Save Changes
Factory Reset
Update Firmware
Configuration Maintenance
Remote Administration Acces
SHDSL Line Setting

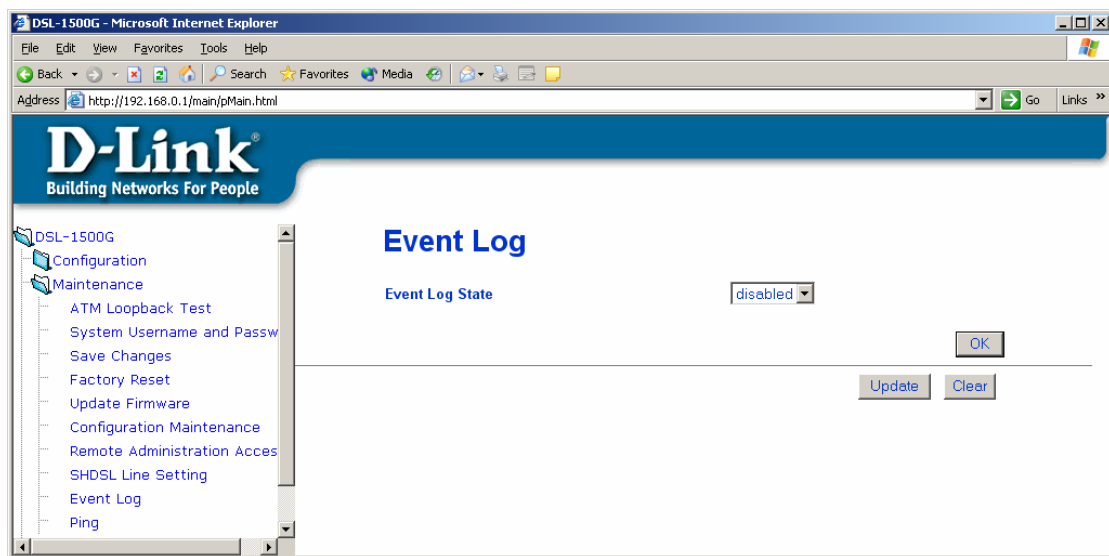
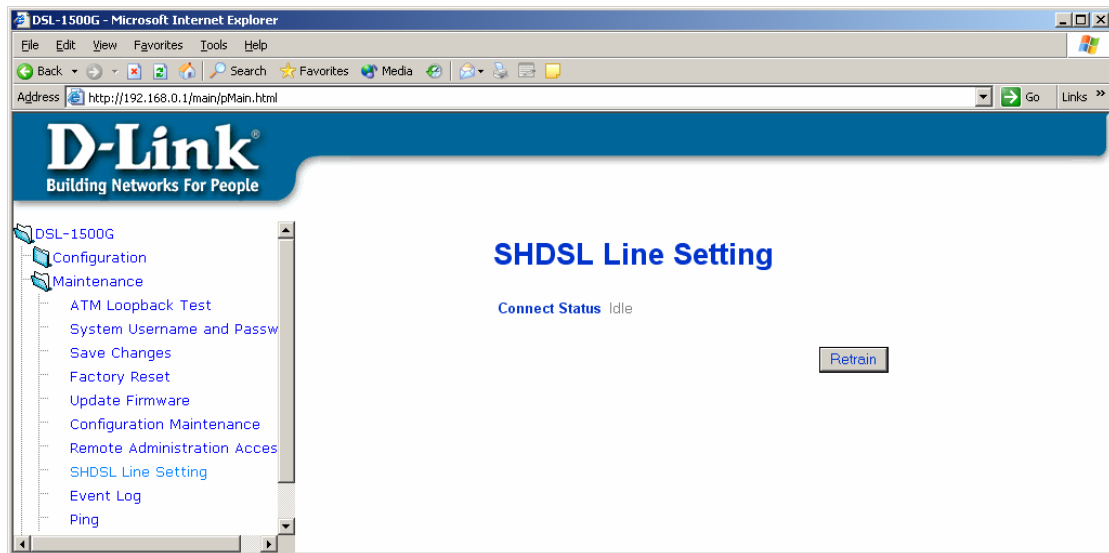
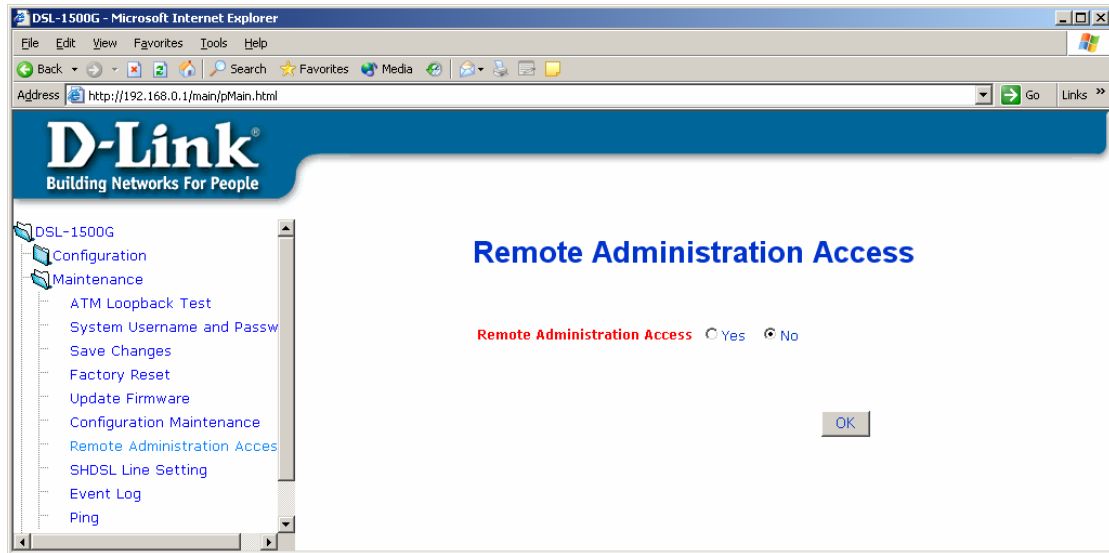
Save Changes

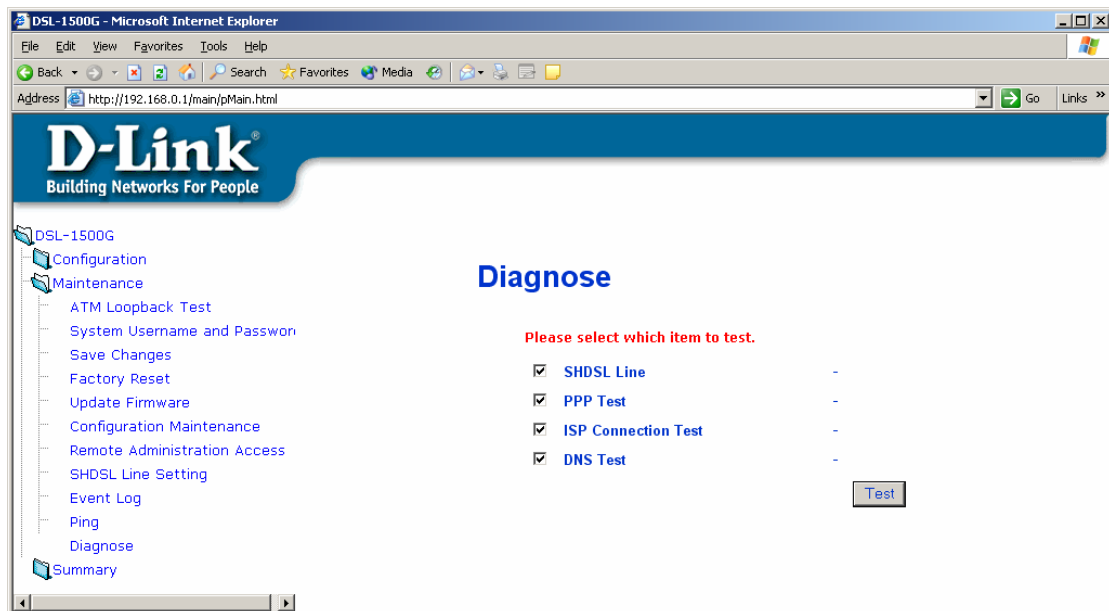
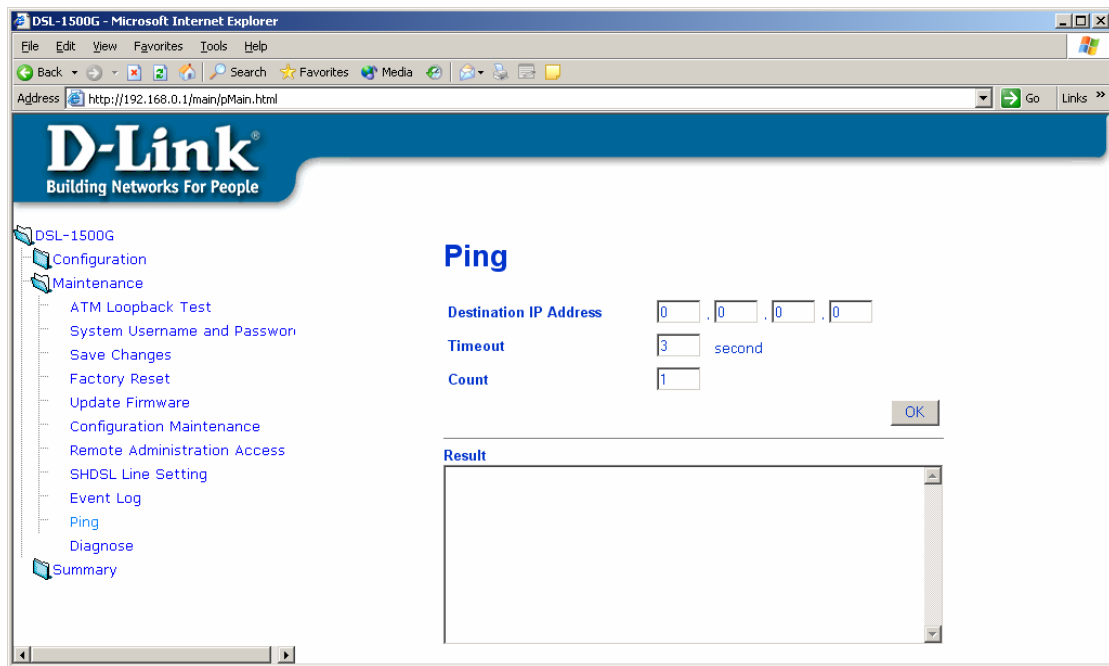
Warning!!

It takes about a minute to save configuration to memory.
Therefore, please DON'T turn off the device's power
until you see the Restart System window.

Save Configuration







DSL-1500G - Microsoft Internet Explorer

File Edit View Favorites Tools Help

Back Forward Stop Search Favorites Media

Address http://192.168.0.1/main/pMain.html Go Links >>

D-Link
Building Networks For People

DSL-1500G
Configuration
Maintenance
Summary
Summary
DHCP Allocation Table
Port Redirection Summary
Runtime Routing Table
Advanced Filtering & Firewall S
Line Condition
Carrier Chart

Summary

IP Address Configuration	IP Address	192.168.0.1
	Subnet Mask	255.255.255.0
	MAC Address	00:05:5d:76:a8:2b
PPPoA Login	Login User Name	user
	Authentication	chap
PPP Information	IP Address	0.0.0.0
	Connection Status	Physical line error
PVC	VPI	8
	VCI	35
Connection Type	Mode	Router with PPPoA
	Encapsulation Method	LLC
Proxy DNS		enabled
	Get DNS IP automatically	enabled
	DNS Server IP	0.0.0.0
DHCP Configuration		enabled
UPnP State		enabled
NAT Configuration		enabled
DMZ State		disabled
IP Filter State		disabled
Date / Time		
Remote Administration Access		disabled

DSL-1500G - Microsoft Internet Explorer

File Edit View Favorites Tools Help

Back Forward Stop Search Favorites Media

Address http://192.168.0.1/main/pMain.html Go Links >>

D-Link
Building Networks For People

DSL-1500G
Configuration
Maintenance
Summary
Summary
DHCP Allocation Table
Port Redirection Summary
Runtime Routing Table
Advanced Filtering & Firewall S
Line Condition
Carrier Chart

DHCP Allocation Table

Index	MAC Address	IP Address	Computer Name	Leased Time
1	00:00:e2:92:ea:2b	192.168.0.4	stevenacer	71

DSL-1500G - Microsoft Internet Explorer

File Edit View Favorites Tools Help

Back Forward Stop Home Search Favorites Media

Address <http://192.168.0.1/main/pMain.html> Go Links

D-Link®

Building Networks For People

- DSL-1500G
 - Configuration
 - Maintenance
 - Summary
 - Summary
 - DHCP Allocation Table
 - Port Redirection Summary
 - Runtime Routing Table
 - Advanced Filtering & Firewall S
 - Line Condition
 - Carrier Chart

Port Redirection Summary

The entries in gray color are mapped by UPnP.

Index	Protocol	Internet		Local
		Start Port	End Port	Local IP Address

DSL-1500G - Microsoft Internet Explorer

File Edit View Favorites Tools Help

Back Forward Stop Reload Search Favorites Media Print Mail

Address <http://192.168.0.1/main/pMain.html> Go Links

D-Link®

Building Networks For People

- DSL-1500G
 - Configuration
 - Maintenance
 - Summary
 - Summary
 - DHCP Allocation Table
 - Port Redirection Summary
 - Runtime Routing Table
 - Advanced Filtering & Firewall Su
 - Line Condition
 - Carrier Chart

Runtime Routing Table

Index	Item Name	Subnet	Gateway	Interface	Metric
1	ethernet	192.168.0.0/24	0.0.0.0	LAN	1
2	ppp_device	200.7.7.0/24	0.0.0.0	WAN	1
3	ppp_route	0.0.0.0/0	0.0.0.0	WAN	1

[illegible]

