

**WIRELESS**

**N**

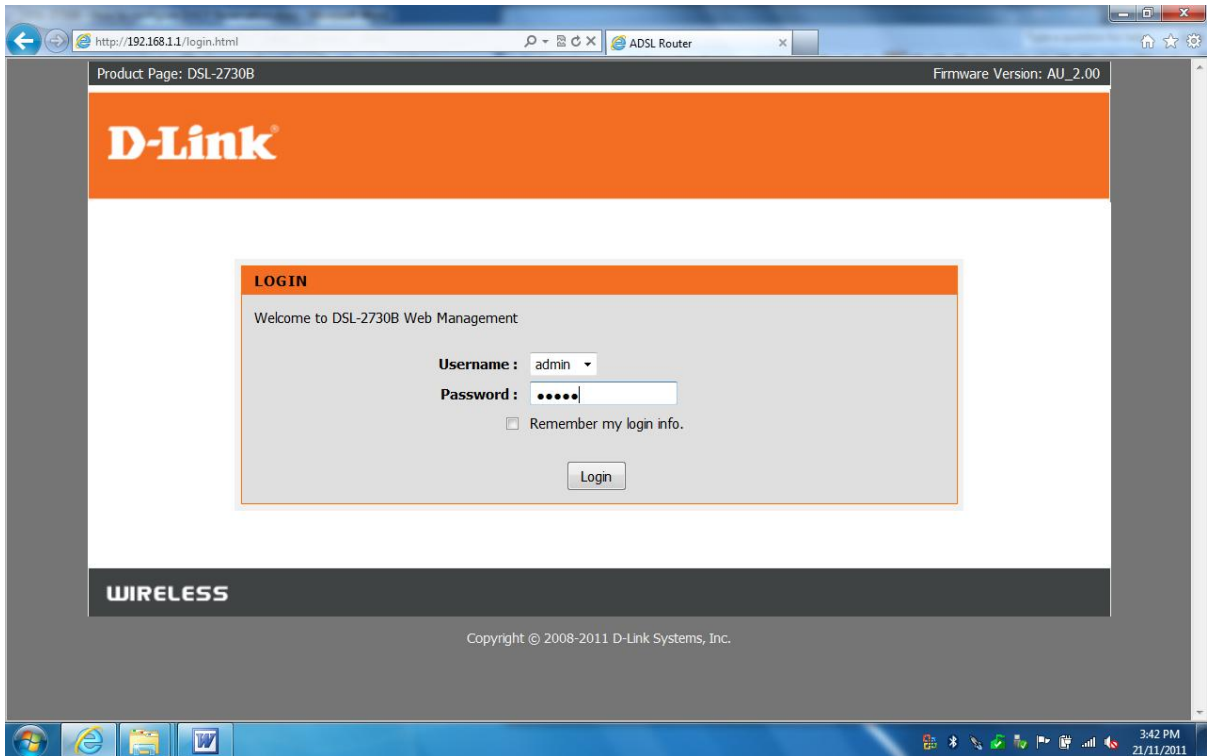
## MAC Filtering



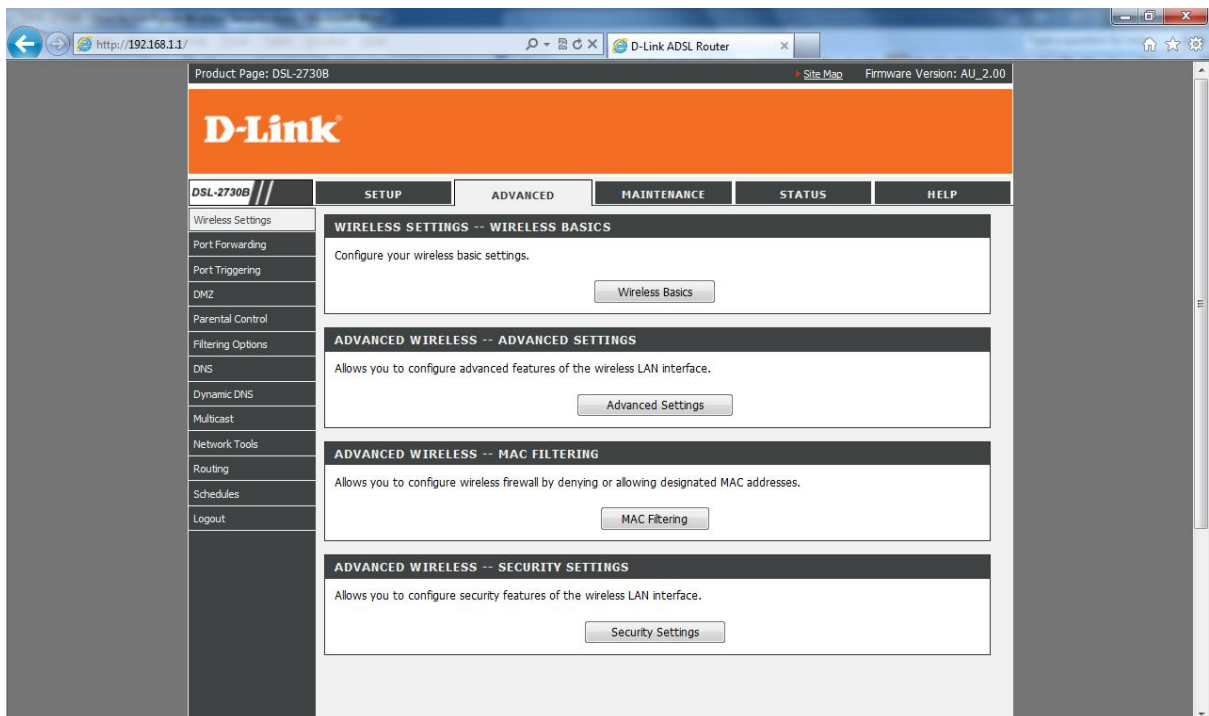
This document will detail how to configure MAC Filtering on the following models  
DSL-2730B Revision T1 Firmware AU\_2.00  
DSL-2740B Revision F1 Firmware AU\_2.00  
DSL-2750B Revision B1 Firmware AU\_2.00

---

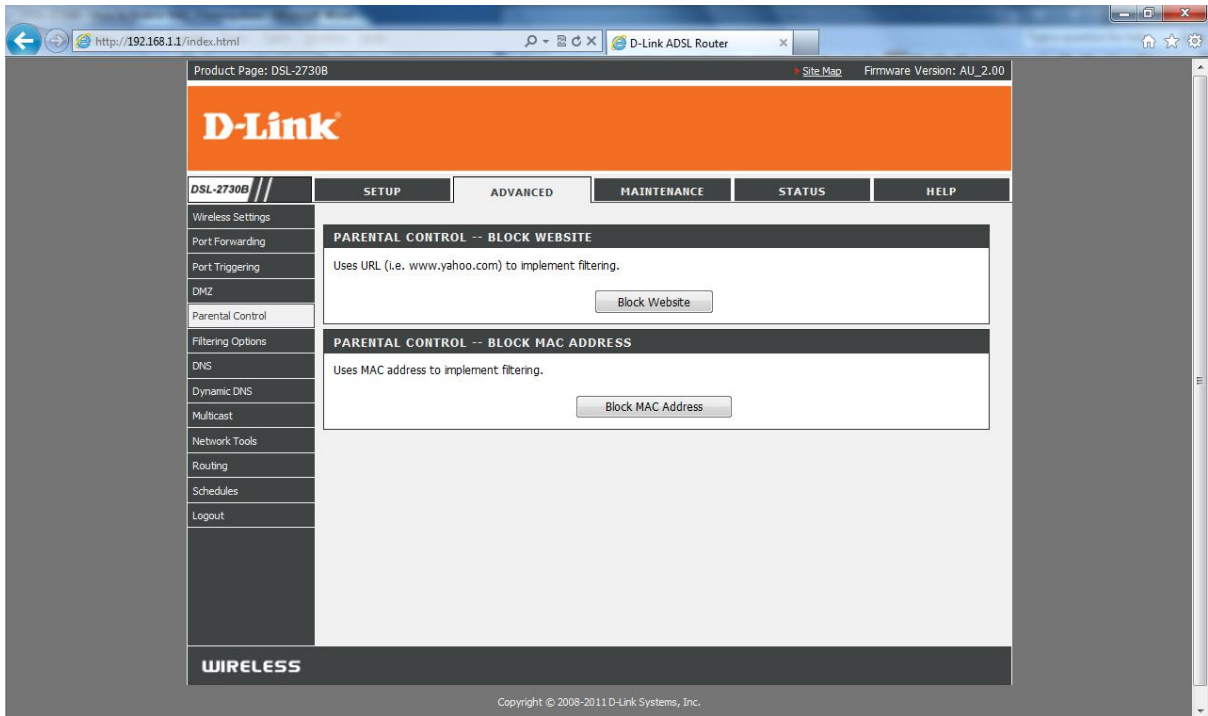
1. Log in to the modem with the computer connected to the modem via Ethernet.
  - URL: <http://192.168.1.1> (default)
  - Username: admin
  - Password: admin (default)



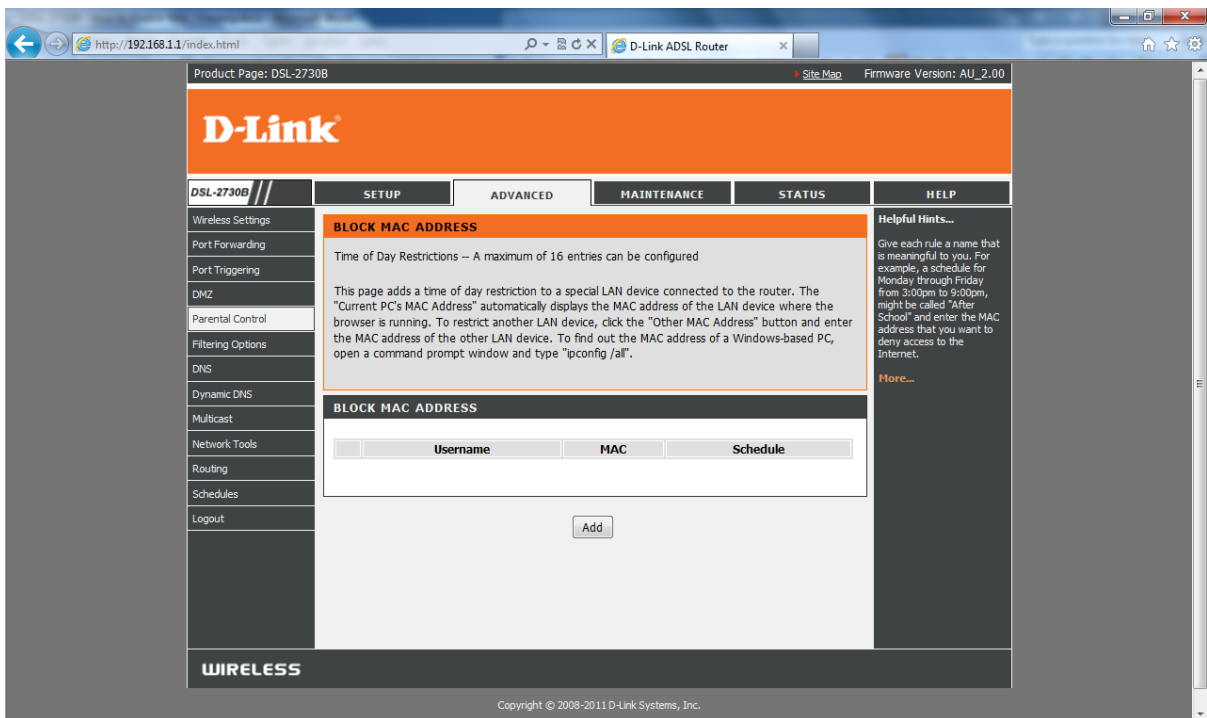
2. Select the **ADVANCED** button in the top menu.



3. Select **PARENTAL CONTROL** in the left menu, followed by the **Block Mac Address** button.



4. Click **ADD** to create a new rule.



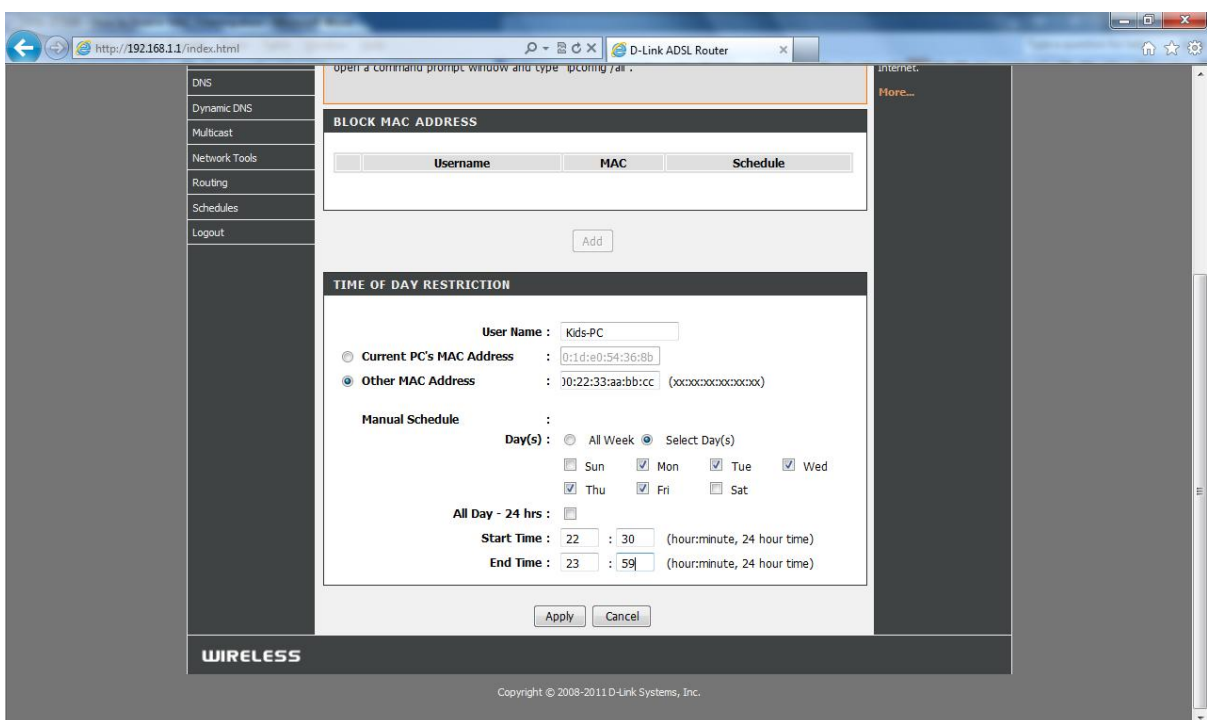
5. Enter a name (User Name) for the rule e.g. Kids-PC

-Select **Current PC's MAC Address** if you wish to create the rule for the PC you are currently working from.

-Select **Other MAC Address** to create the rule for another computer on the network such as e.g. the Kids PC.

-Enter the MAC Address in the correct format for the Kids PC (xx:xx:xx:xx:xx)

-Select **Manual Schedule** to create a new schedule to block the computer from accessing the internet at specific times or select the pre-configured **Schedule Rule (Always)** if you wish to block the PC constantly.



6. Once all information is set, click on **APPLY** to save the changes.