

**D-Link®**

WIRELESS N300  
ADSL2+ MODEM ROUTER  
DSL-2740M

**QUICK  
INSTALLATION  
GUIDE**

A large, light gray watermark of the D-Link logo is positioned diagonally across the page, behind the text. The logo consists of a stylized 'D' with a white triangle inside it.

# CONTENTS OF PACKAGING

## CONTENTS



**WIRELESS N300 ADSL2+ MODEM ROUTER**  
DSL-2740M



**POWER ADAPTER**  
ADAPTER



**ETHERNET CABLE (CAT5 UTP)**  
CONNECT THE ROUTER TO YOUR PC DURING SET-UP



**RJ-11 PHONE CABLE**



**ADSL SPLITTER**



If any of these items are missing from your packaging contact your reseller

# PRODUCT SETUP

## BEFORE YOU START

Internet Provider Account Details - If you are using an Australian or New Zealand ADSL connection, you will need your user name and password. If you do not have this information, contact your Internet Service Provider.

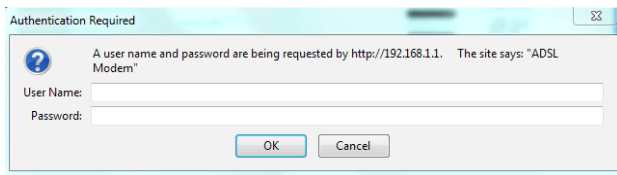
Do not proceed until you have this information.

## CONNECT YOUR MODEM ROUTER

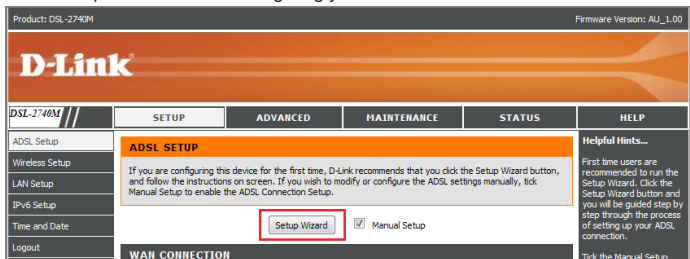
1. Connect the supplied Splitter/Filter to your telephone outlet.
2. Take the supplied RJ-11 phone cable and plug it into the DSL port of the Splitter/Filter. Plug the other end into the DSL port of the Router.
3. Plug the supplied Ethernet cable into one of the Ethernet ports on the back of your Router and connect the other end into the Ethernet port on your computer.
4. Connect the supplied power adapter to the back of your Router and power the device on.

## SETUP YOUR MODEM ROUTER

1. Open a web browser (e.g., Internet Explorer, Chrome, Firefox, or Safari) and enter '192.168.1.1' into the address bar (http://192.168.1.1).
2. When prompted, enter 'admin' into both the username and password fields and click 'Login'.



3. Click on 'Setup Wizard' to start configuring your Router.



- You have the option to change your routers administration password. You can also skip this step.
- From the drop down lists, select your country and ISP. The required connection details will autofill for an ADSL connection. If your ISP isn't listed, select 'Others' and enter the required details manually.

**STEP 2: SELECT INTERNET CONNECTION TYPE**

Please select your Country and ISP (Internet Service Provider) from the list below. If your Country or ISP is not in the list, please select "Other".

Country : Others ▾

ISP Provider : Others ▾

VPI : 8

VCI : 35

Connection Type : PPPoE LLC ▾

Back Next Cancel

- Enter your ADSL Username and Password, as supplied by your ISP.

**STEP 2: SELECT INTERNET CONNECTION TYPE**

Please enter your Username and Password as provided by your ISP (Internet Service Provider). Please enter the information exactly as shown taking note of upper and lower cases. Click Next to continue.

Username :

Password :

Confirm Password :

Back Next Cancel

- Click 'Finish' to complete the Setup Wizard. Once settings are saved, you should be online and able to access the Internet after a short period.

**STEP 3: FINISH**

Setup complete. Click Back to review or modify settings. Click Finish to apply current settings. If your Internet connection does not work after apply the settings, you can try the Setup Wizard again with alternative settings or use Manual Setup instead if you have your Internet connection details as provided by your ISP.

Back Finish Cancel

- Other advanced settings can be configured by clicking on other tabs within the user interface. For more information, please consult the user guide.

# TROUBLESHOOTING

## SET-UP AND CONFIGURATION PROBLEMS

### **1. HOW DO I CONFIGURE MY DSL-2740M ROUTER WITHOUT THE CD, OR CHECK MY WIRELESS NETWORK NAME (SSID) AND WIRELESS ENCRYPTION KEY?**

- Connect your PC to the router using an Ethernet cable.
- Open a web browser and enter the address <http://192.168.1.1>
- The default username is 'admin'. The default password is 'admin'.
- If you have changed the password and can not remember it, you will need to reset the router to set the password back to 'admin'.

### **2. HOW DO I RESET MY DSL-2740M ROUTER TO FACTORY DEFAULT SETTINGS?**

- Ensure the router is powered on.
  - Press and hold the reset button on the rear of the device for 10 seconds.
- Note: Resetting the router to factory default will erase the current configuration settings. To re-configure your settings, log into the router as outlined in question 1, then follow the steps in the 'SETUP YOUR MODEM ROUTER SECTION' of this QIG

### **3. HOW DO I ADD A NEW WIRELESS CLIENT OR PC IF I HAVE FORGOTTEN MY WIRELESS NETWORK NAME (SSID) OR WIRELESS ENCRYPTION KEY?**

- Every PC that needs to connect to the router wirelessly, you will need to ensure you use the correct Wireless Network Name (SSID) and encryption key.
- Use the web based user interface (as described in question 1 above) to check or choose your wireless settings.
- Make sure you write down these settings so that you can enter them into each wirelessly connected PC. You will find a dedicated area on the back of this document to record this important information for future use.

### **4. WHY CAN I NOT GET AN INTERNET CONNECTION?**

- Please contact your ISP to make sure the service has been enabled/connected by your ISP and that your ISP username and password is correct.

## NOTES

## NOTES

# WIRELESS NETWORK REMINDER

Wireless Network Name (SSID)

Wireless Network Password