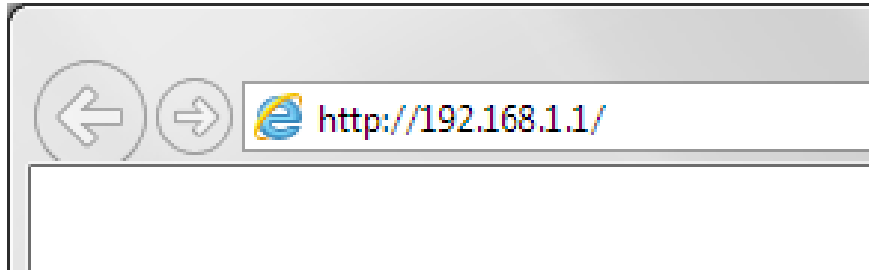


How to access the shared USB drive on my modem

This document details how to access files on a USB drive connected to your modem router.

Please note: Accessing your modem's configuration pages does not require Internet connection as these pages are stored inside your modem. Your computer just needs to be connected to the modem.

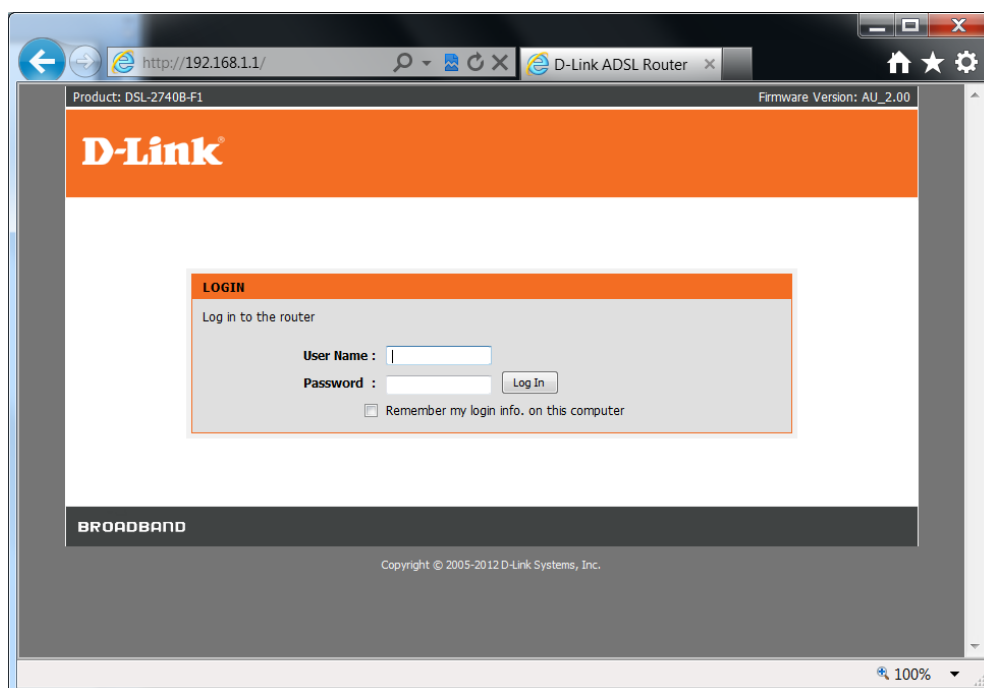
1. Open your Internet browser e.g. Internet Explorer, Firefox, Chrome, Safari, etc. and enter the IP address of your D-Link modem in the **address bar**: <http://192.168.1.1>



2. When prompted type in the Username and Password then click on the "Log In" button.
If you have not changed the password for the modem administration, the factory settings are:

Username: admin


Password: admin



If you cannot recall the password you assigned to your modem you will need to reset the modem to factory defaults by pressing the reset button for 10 seconds. Please note that this will revert all the settings in the modem to factory settings and you will have to reconfigure it with your Internet settings and Wireless security. Make sure you have your Internet account details (given by your Internet Provider) handy.

- Make sure your USB drive is connected to the modem's USB port. Go to Advanced > Storage Service > Storage Device Info. You should see your storage device info displayed. If it is not shown please make sure your drive is formatted in NTFS, FAT32 or VFAT file systems.

Product Page: DSL-2750B [Site Map](#) Firmware Version: AU_3.05



DSL-2750B // SETUP ADVANCED MAINTENANCE STATUS HELP

Wireless Settings
Port Forwarding
Port Triggering
DMZ
Parental Control
Filtering Options
DNS
Dynamic DNS
IP Tunnel
Storage Service
Multicast
Network Tools
Routing
Schedules
Logout

STORAGE SERVICE -- STORAGE DEVICE INFO

Show Storage Device Info.

[Storage Device Info](#)

NETWORK TOOLS -- STORAGE USER ACCOUNT CONFIGURATION


Config storage user account.

[Storage User Account](#)

WIRELESS

Copyright © 2008-2011 D-Link Systems, Inc.

Product Page: DSL-2750B [Site Map](#) Firmware Version: AU_3.05



DSL-2750B // SETUP ADVANCED MAINTENANCE STATUS HELP

Wireless Settings
Port Forwarding
Port Triggering
DMZ
Parental Control
Filtering Options
DNS
Dynamic DNS
IP Tunnel
Storage Service
Multicast
Network Tools
Routing
Schedules
Logout

STORAGE DEVICE INFORMATION

The Storage service allows you to use Storage devices with modem to be more easily accessed.

STORAGE DEVICE INFORMATION

Volumename	FileSystem	Total Space	Used Space
usb1_1	ntfs	7727	129

Helpful Hints...

The Storage service allows you to use Storage devices with modem to be more easily accessed.

Note : volume name used for samba user account setting.

[More...](#)

WIRELESS

Copyright © 2008-2011 D-Link Systems, Inc.

- By default the router has "admin" user with password "admin" created for storage access. If you want to change the password or the username please tick the Remove option and click on the Remove button. Then click on Add button to add a username and password.

Product Page: DSL-2750B [Site Map](#) Firmware Version: AU_3.05

D-Link

DSL-2750B // SETUP ADVANCED MAINTENANCE STATUS HELP

STORAGE USERACCOUNT CONFIGURATION

Choose Add, or Remove to configure User Accounts.

STORAGE USERACCOUNT

UserName	Remove
admin	<input checked="" type="checkbox"/>

Wireless Settings

Port Forwarding

Port Triggering

DMZ

Parental Control

Filtering Options

DNS

Dynamic DNS

IP Tunnel

Storage Service

Multicast

Network Tools

Routing

Schedules

Logout

Helpful Hints...

Mass Storage is an application for store large amounts of dataon storage media, such as USB flash disk. [More...](#)

WIRELESS

Product Page: DSL-2750B [Site Map](#) Firmware Version: AU_3.05

D-Link

DSL-2750B // SETUP ADVANCED MAINTENANCE STATUS HELP

STORAGE USERACCOUNT CONFIGURATION

Choose Add, or Remove to configure User Accounts.

STORAGE USERACCOUNT

UserName	Remove

ADD STORAGE USERACCOUNT

Username:

Password:

Confirm Password:

Wireless Settings

Port Forwarding

Port Triggering

DMZ

Parental Control

Filtering Options

DNS

Dynamic DNS

IP Tunnel

Storage Service

Multicast

Network Tools

Routing

Schedules

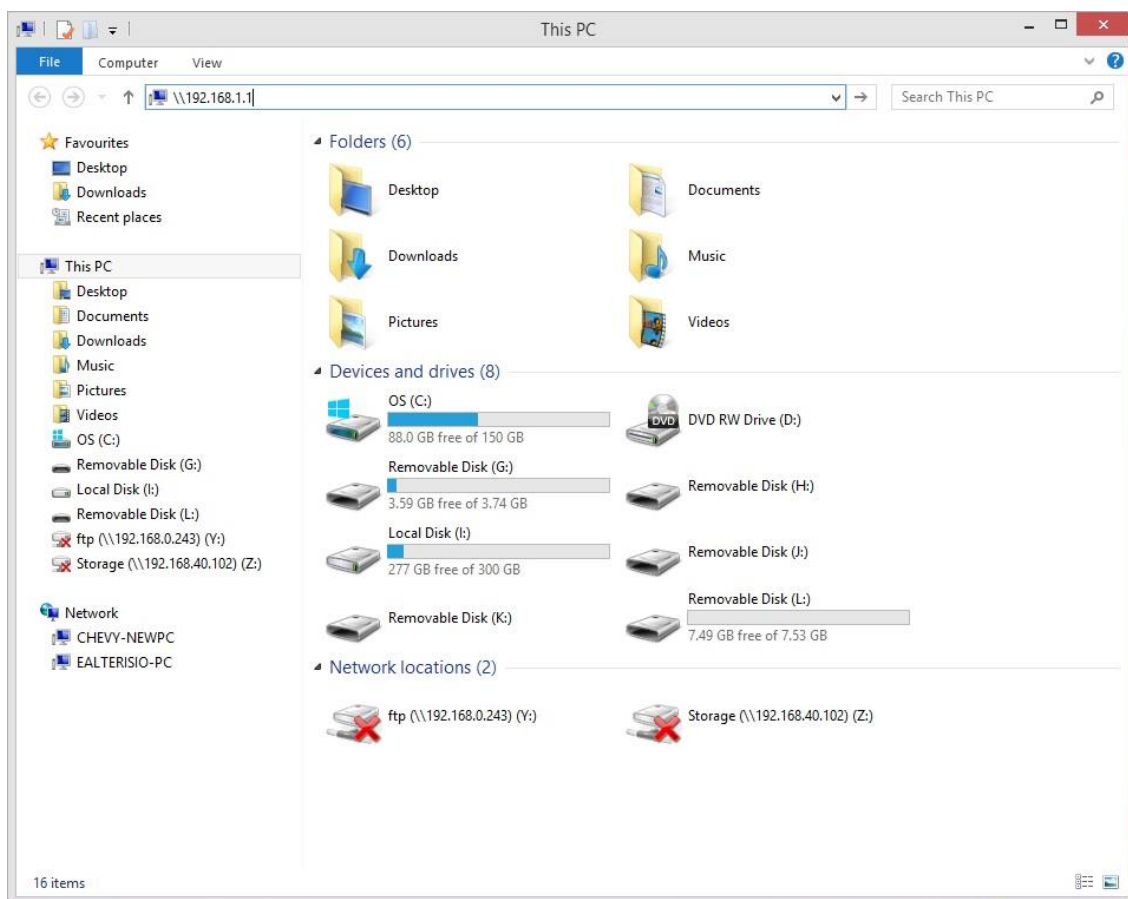
Logout

Helpful Hints...

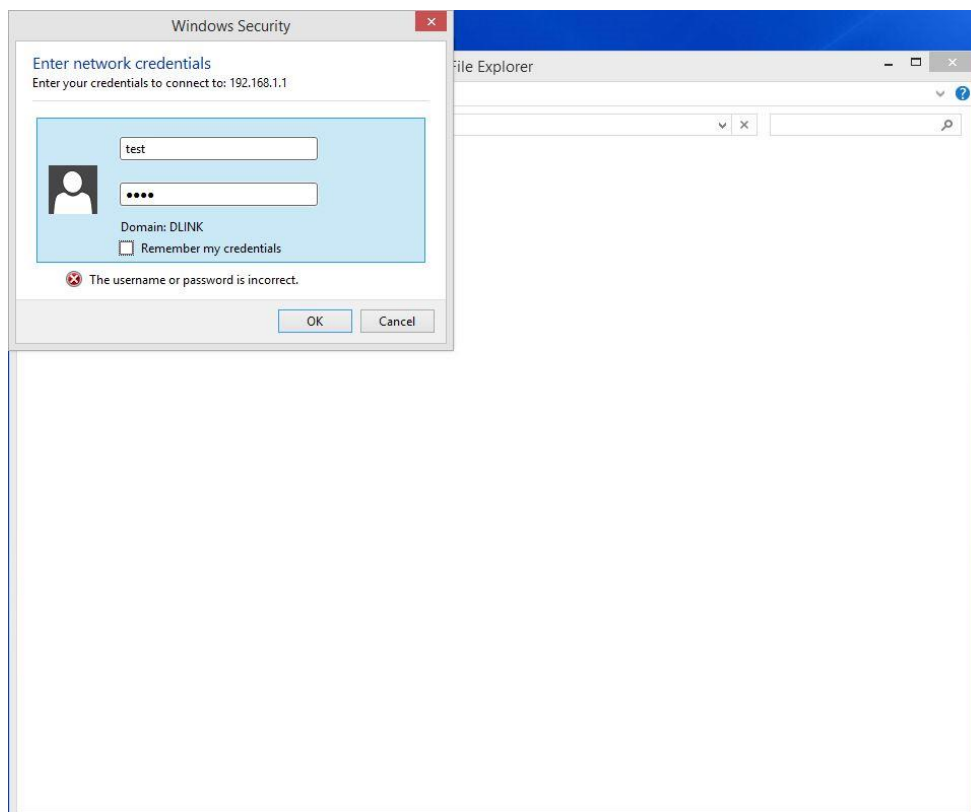
Mass Storage is an application for store large amounts of dataon storage media, such as USB flash disk. [More...](#)

WIRELESS

- To access the files on your USB drive please open Windows Explorer (File explorer) and type the router's address after two backslashes: \\192.168.1.1\



You will be prompted to enter username and password: type in the username and password that you created at previous step (or admin / admin if you left the storage service username as default)



After entering the correct username and password you will be able to access the files and folders on your USB drive:

