


# DSL-302G for Optus


DSL-302G Configuration Manager GUI - Microsoft Internet Explorer

File Edit View Favorites Tools Help

Address <http://10.1.1.2/hag/pages/home.ssi> Go Links >>



## Test My Modem



Building Networks for People

- Connection Status
- Advanced Diagnostics
- Change Password
- Advanced Network Setup
- Help Index

### Connection Status

	Service	Status
?	Connection to DSLAM	Connecting
?	Connection to Internet	Disconnected
?	Connection time	00:00:00
?	IP Address	0.0.0.0

?

Internet Connection

Connect

?


Automatically connect to the Internet at startup

☒


DSL-302G Configuration Manager GUI - Microsoft Internet Explorer

File Edit View Favorites Tools Help

Address <http://10.1.1.2/hag/pages/home.ssi> Go Links >>



## Test My Modem



Building Networks for People

- Connection Status
- Advanced Diagnostics
- Change Password
- Advanced Network Setup
- Help Index

### Advanced Diagnostics

?

Modem Model

DSL-302G

?

S/W Version

R2.01M.B33t4.OP(021206a/T93.3.38)

?

	Downstream	Upstream
SNR	0.0dB	0.0dB
Attenuation	0.0dB	0.0dB
Connection rate	0 Kbps	0 Kbps

?

	1-4	5-8	9-12	13-16	17-20	21-24
ES data	0	0	0	0	0	0
SES data	0	0	0	0	0	0
Unavailable seconds	0	0	0	0	0	0

?

Perform ATM Tests

OK

ATM OAM segment loopback test

UNKNOWN

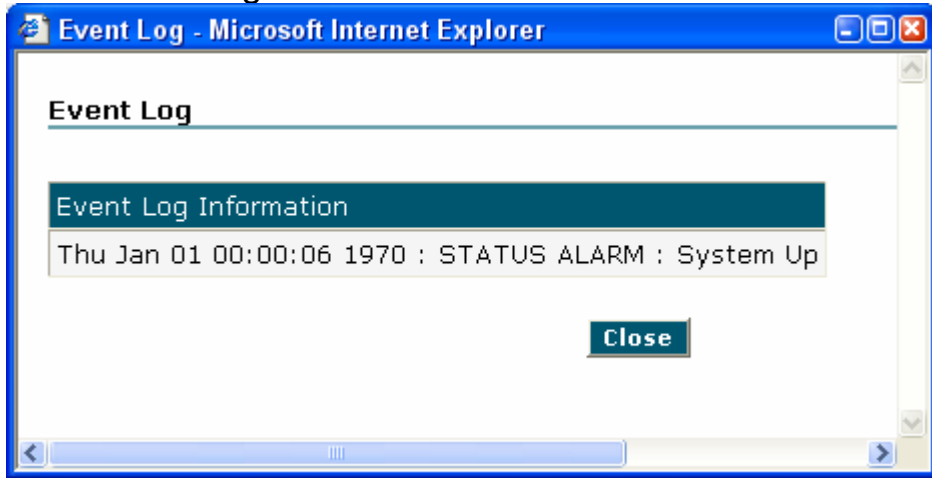
ATM OAM end loopback test

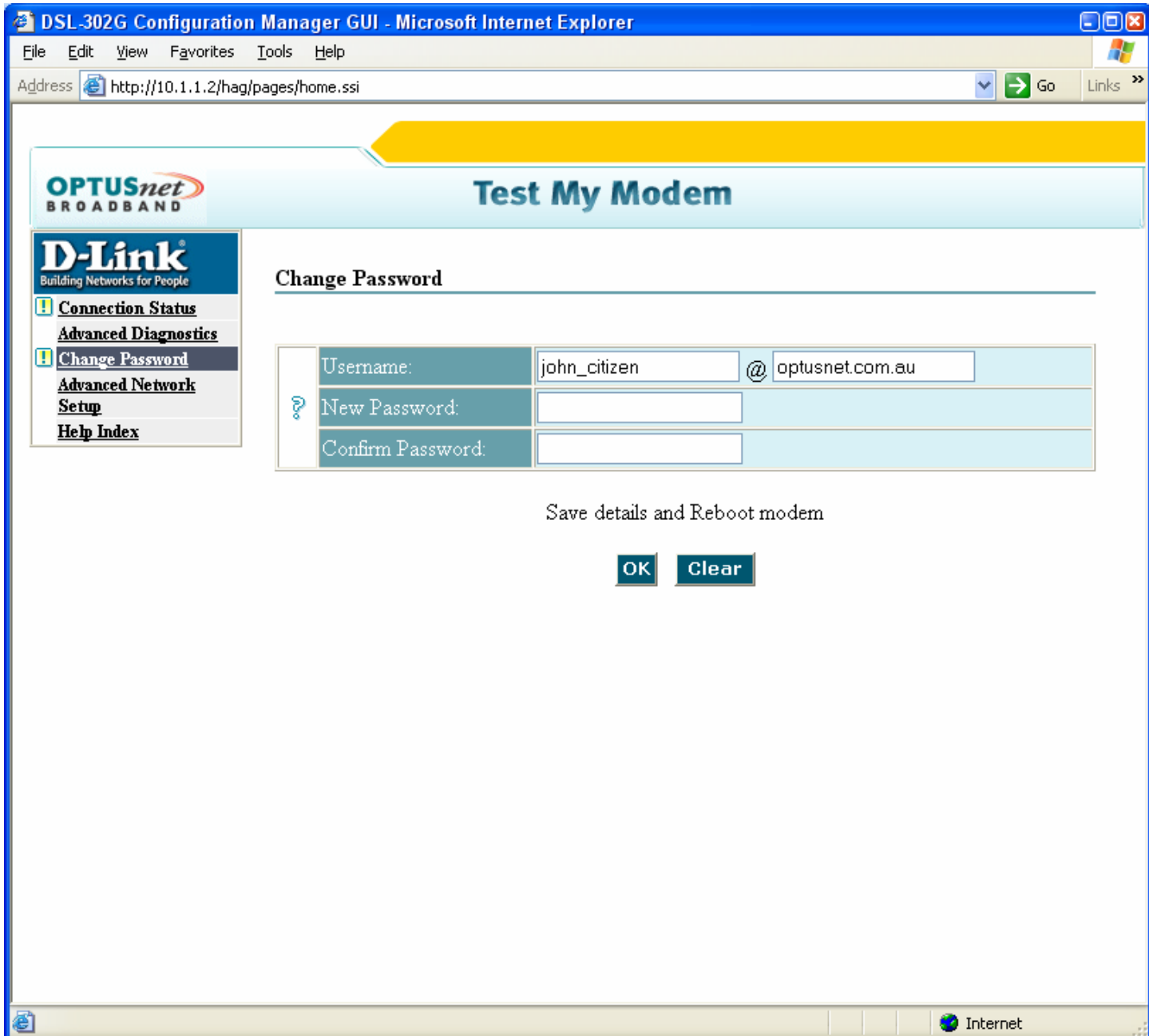
UNKNOWN

?

Show Event Log

Show event log:







DSL-302G Configuration Manager GUI - Microsoft Internet Explorer

File Edit View Favorites Tools Help

Address <http://10.1.1.2/hag/pages/home.ssi> Go Links »

**Test My Modem**

  
Building Networks for People

- Connection Status
- Advanced Diagnostics
- Change Password
- Advanced Network Setup**
- Help Index

### Advanced Network Setup

☒ Disable NAT (Default)

☐ Enable NAT (not Optus supported) ?

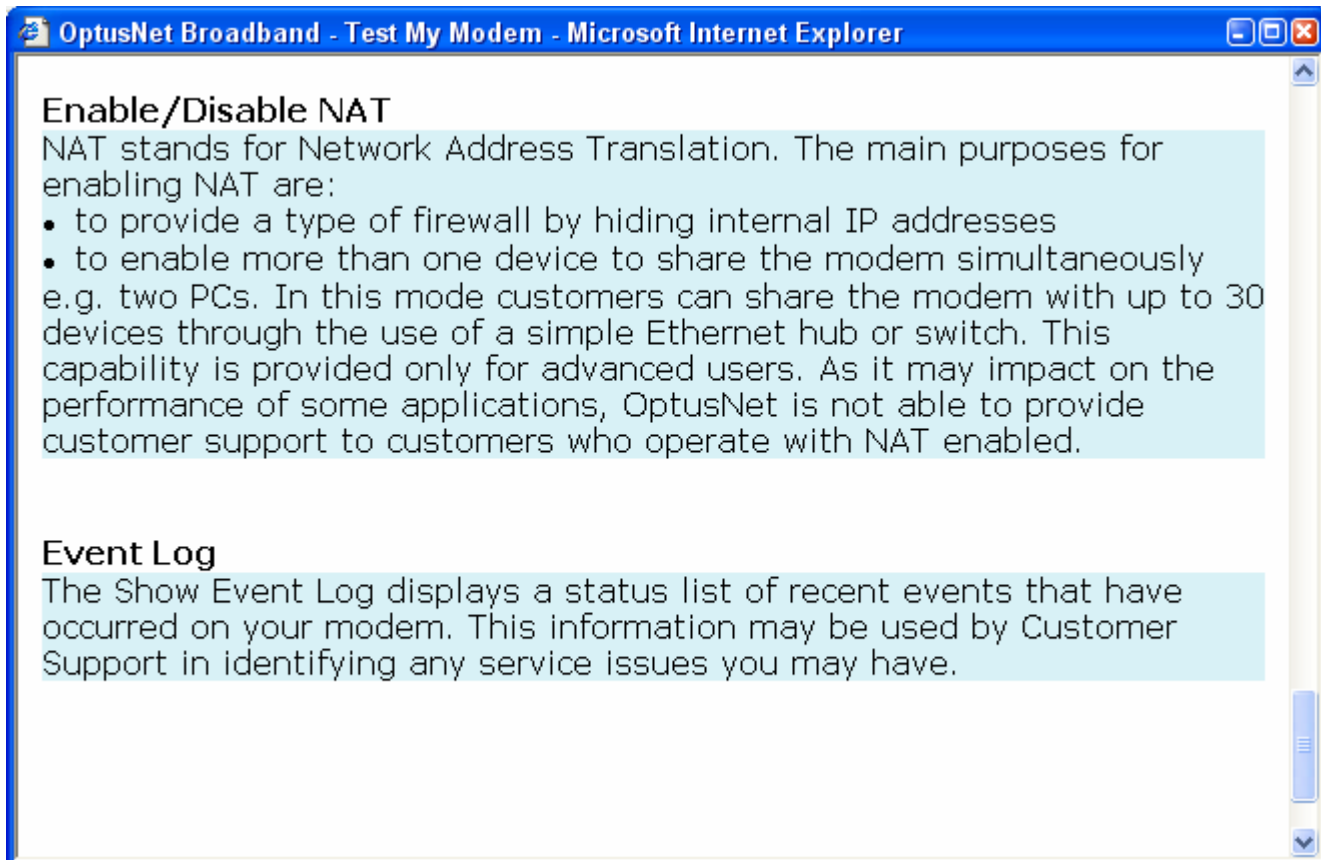
NAT Rule Information	
Local Address from	10.1.1.3
Local Address to	10.1.1.32

Accept and Reboot modem

**OK**

Internet

Enable NAT -?



Back to regular pages:

Change address from

<http://10.1.1.2/hag/pages/home.ssi>

to

<http://10.1.1.2/hag/pages1/home.ssi>

DSL-302G Configuration Manager GUI - Microsoft Internet Explorer

File Edit View Favorites Tools Help

Address http://10.1.1.2/hag/pages1/home.ssi Go Links

D-Link

Building Networks For People

D-Link

[Quick Configuration](#)

[System View](#)

[LAN](#)

[WAN](#)

[Bridging](#)

[Admin](#)

Quick Configuration

Use this page to quickly configure the system.

Refresh Rate: No Refresh

Connection Type:	PPPoE LLC
VPI:	8
VCI:	35
PPP	
Security Protocol:	<input checked="" type="radio"/> PAP <input type="radio"/> CHAP
Username:	john_citizen@optus
Password:	.....

Save & Reboot

Delete

Cancel

Help

PPP Information			
IP Address	Mask	Gateway	Connection Status
0.0.0.0	0.0.0.0	0.0.0.0	No ADSL Connection <div>Connect</div>

Done

Internet

# Firmware for Optus: R2.01MB33T4OP

DSL-302G Configuration Manager GUI - Microsoft Internet Explorer

File Edit View Favorites Tools Help

Address <http://10.1.1.2/hag/pages1/home.ssi> Go Links >>

**D-Link**  
Building Networks For People

**Image Upgrade**

This page is used to upload a new image to the system.

<b>Current Firmware Version:</b>	R2.01M.B33t4.OP(021206a/T93.3.38)
<b>Upgrade File:</b>	<input type="text"/> <input data-bbox="1339 548 1421 569" type="button" value="Browse..."/>

**Left Navigation:**

- D-Link
  - [Quick Configuration](#)
  - [System View](#)
  - [LAN](#)
  - [WAN](#)
  - [Bridging](#)
  - [Admin](#)
    - [User Config](#)
    - [Save & Reboot](#)
    - [Image Upgrade](#)
    - [Alarm](#)
    - [Diagnostics](#)
    - [Remote Access](#)

Done Internet