

## DSL-526B - Port Forwarding Guide



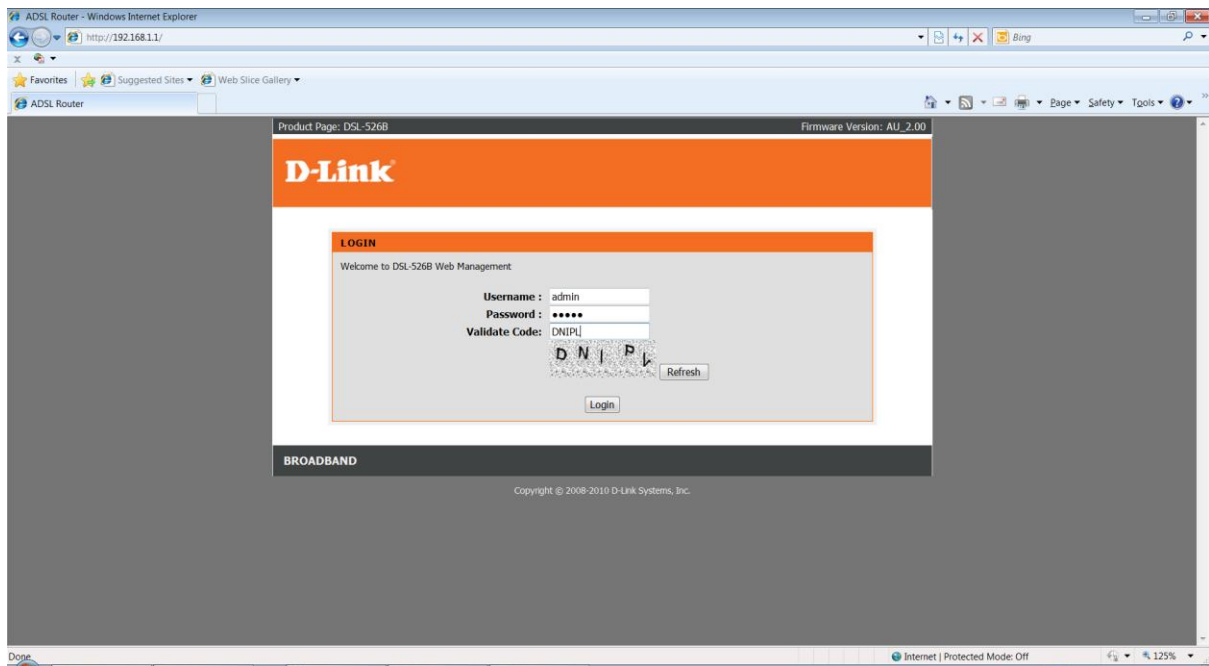
This document will detail how to configure Port Forwarding on the DSL-526B.

---

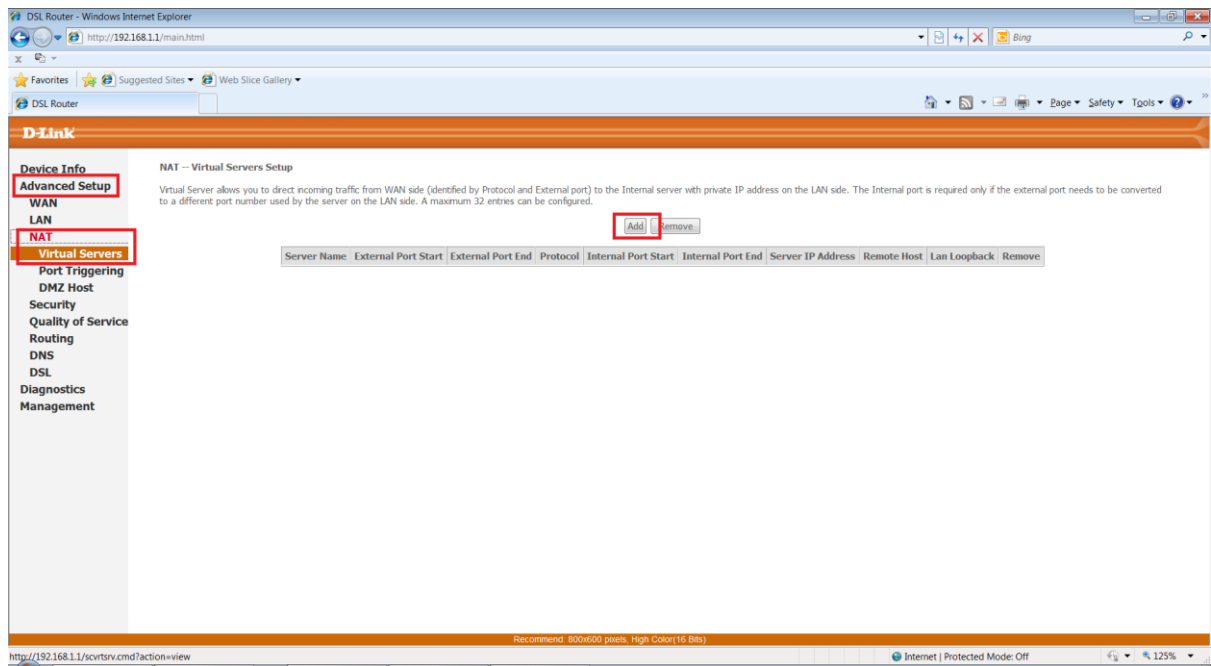
## NOTE:

*It is recommended that your PC is configured with a Static IP when using Port Forwarding. See **page 5** - how to configure Windows 7 with a static IP.*

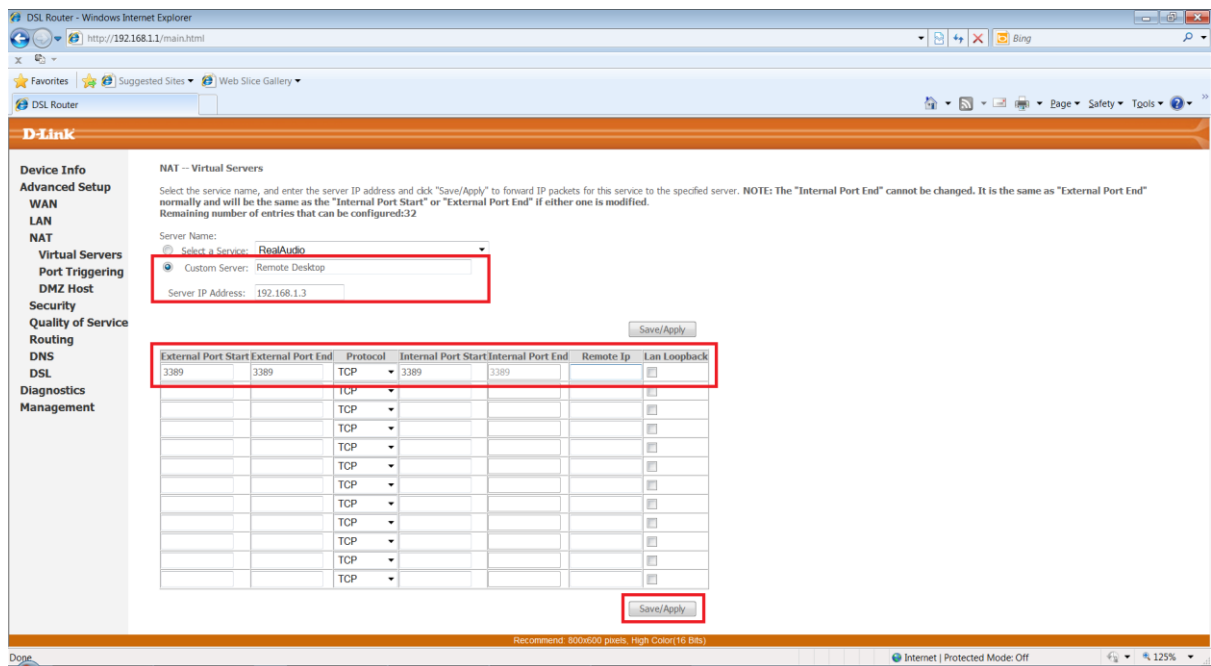
1. Log in to the modem with the computer connected to the modem via Ethernet.
  - URL: <http://192.168.1.1> (default)
  - Username: admin
  - Password: admin (default)
  - Validate Code: (randomly generated)



2. Select the **ADVANCED SETUP** button from the left menu.
3. Select **NAT** from the sub-menu followed by select **VIRTUAL SERVERS** from the list.
4. Select **ADD** to create a new rule.

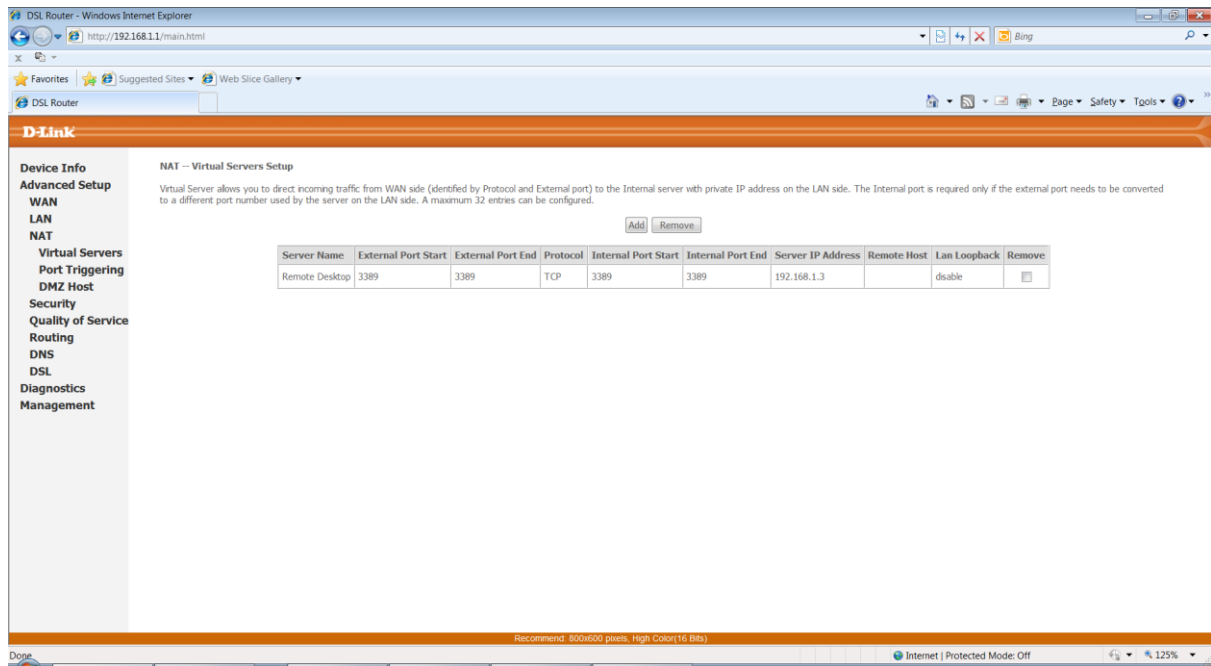


5. Select **CUSTOM SERVER**



6. Name the rule with the name of the service your creating the rule for, such as **Remote Desktop** in this example.
7. Enter the Remote Desktop port number (3389) in the **External Port Start** and **External Port End**. (The Internal Ports will auto fill).

8. Select **SAVE/APPLY** to save the changes.



9. The page will return to the Virtual Servers entries table with your new rule.

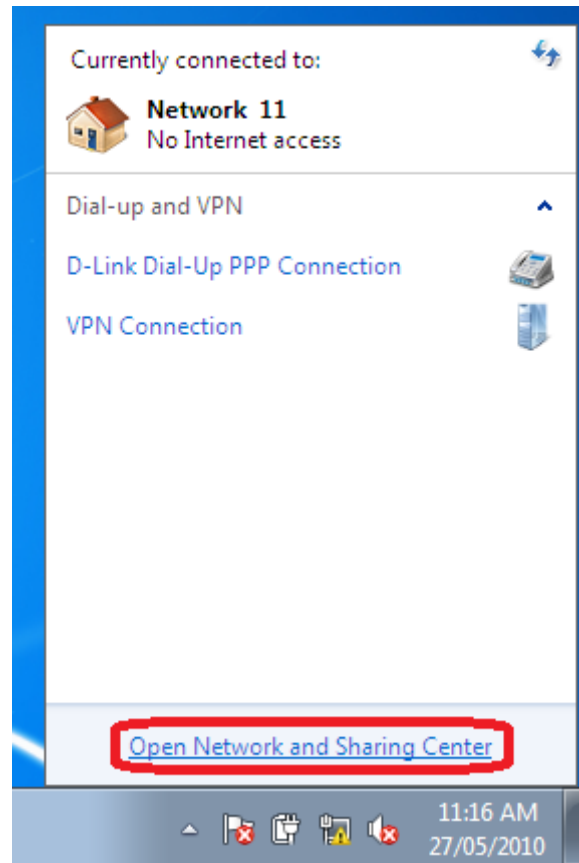
**NOTE:**

*If you have multiple PC's you wish to enable a service such as Remote Desktop on, you will need to create a different External Port Start and End for each PC e.g.*

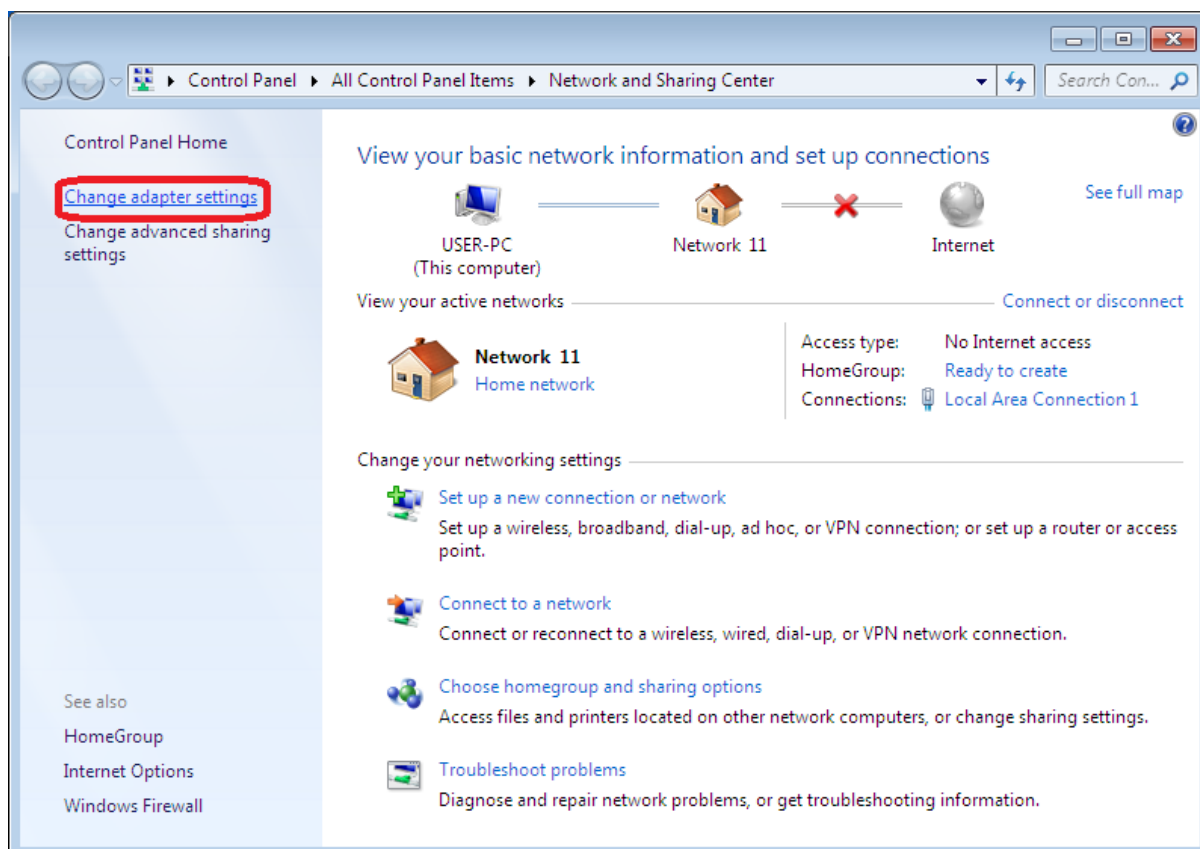
- PC 1: 3389 (External) / 3389 (internal)
- PC2: 3390 (External) / 3389 (Internal)
- PC3: 3391 (External) / 3389 (Internal)
- To check whether the port is successfully forwarded, go to [www.canyouseeme.org](http://www.canyouseeme.org) and enter the 'external port' used in your port forwarding rule and click Submit. It will return with a *Success* or *Error* message.

# How to configure Windows 7 with a static IP Address.

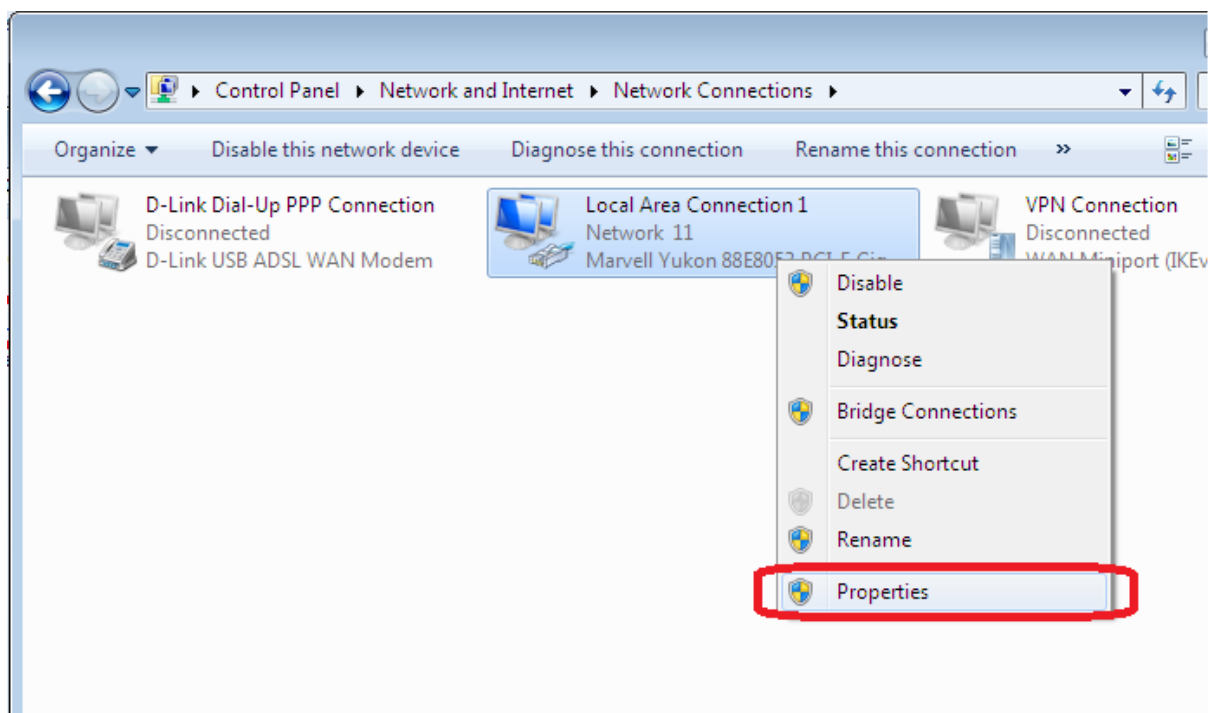
1. Click the 'Network' icon in the windows task tray.
2. Select **Open Network and Sharing Center**



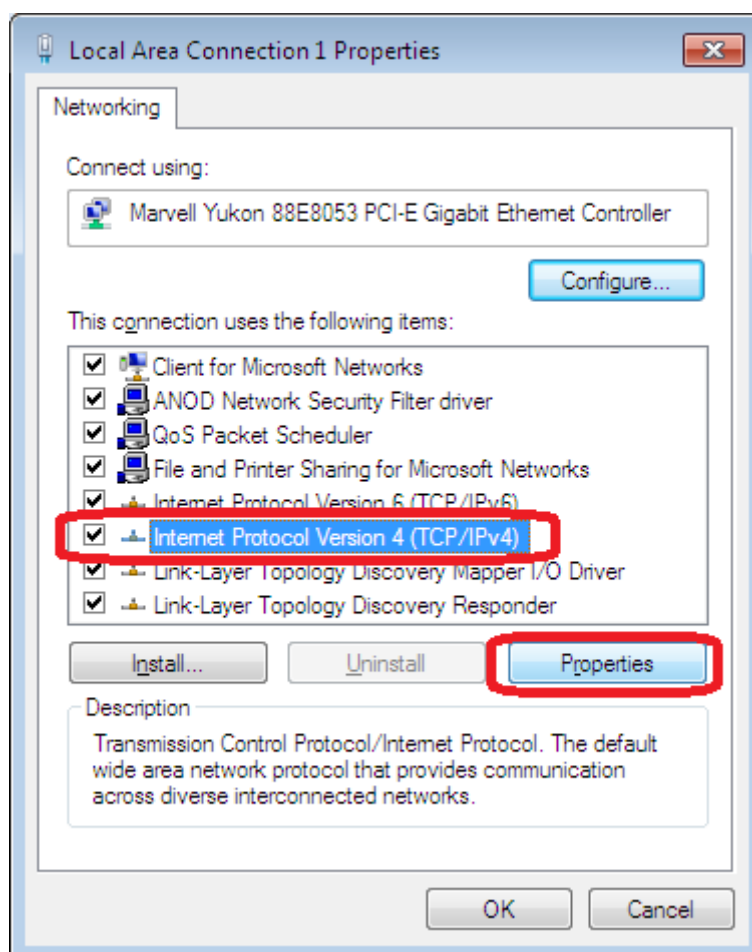
3. Select **Change Adapter Settings** from the left menu panel.



- Right Click the icon of the adapter which you are using to access the Internet e.g. **Local Area Connection** (Wired) or **Wireless Network Connection** (Wireless) and select **Properties**.

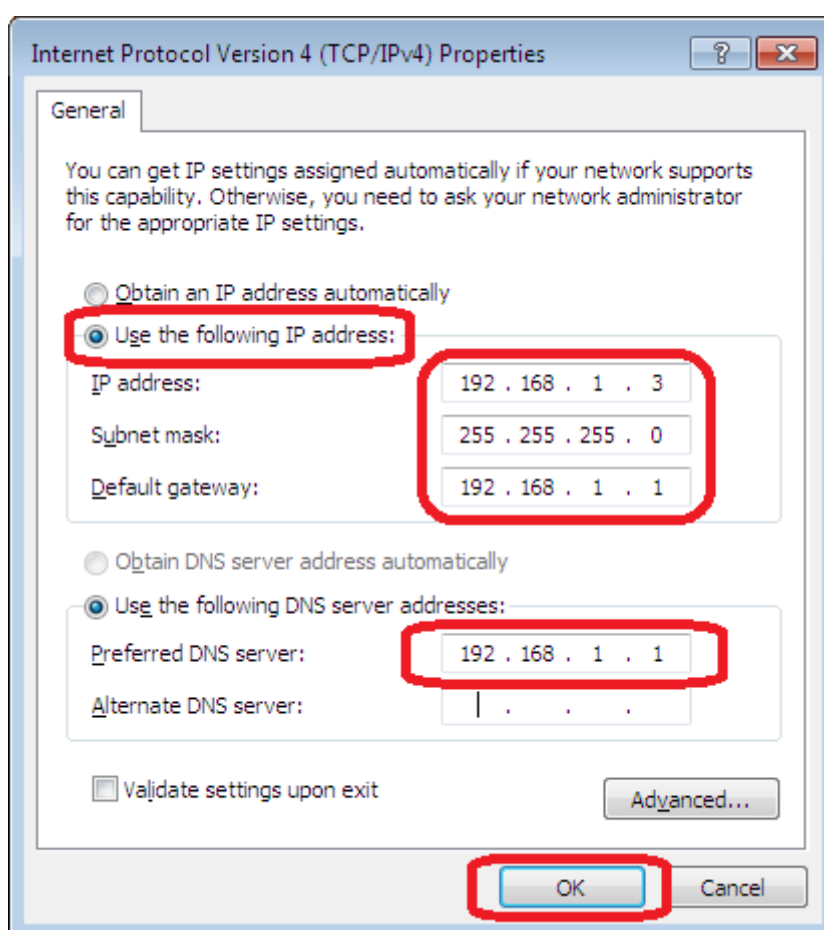


- Select **Internet Protocol Version 4 (TCP/IPv4)** and click the **Properties** button.



6. Select the radio button beside **Use the following IP address:**

- Enter the static IP you wish to assign your PC. It will need to be in range of your router LAN subnet e.g. **192.168.1.x**
- In this example, the modem LAN IP is 192.168.1.1 and therefore 192.168.1.**3** is used for this particular PC's IP Address
- Subnet mask: automatically filled for the user
- Default Gateway: **192.168.1.1** (modem IP address)
- DNS Servers: in this example the modem is used as the Primary DNS server (192.168.1.1). However this can be assigned with your ISP's DNS or alternative DNS servers.



7. Click OK to save and activate the changes, followed by OK or CLOSE on the window following.