

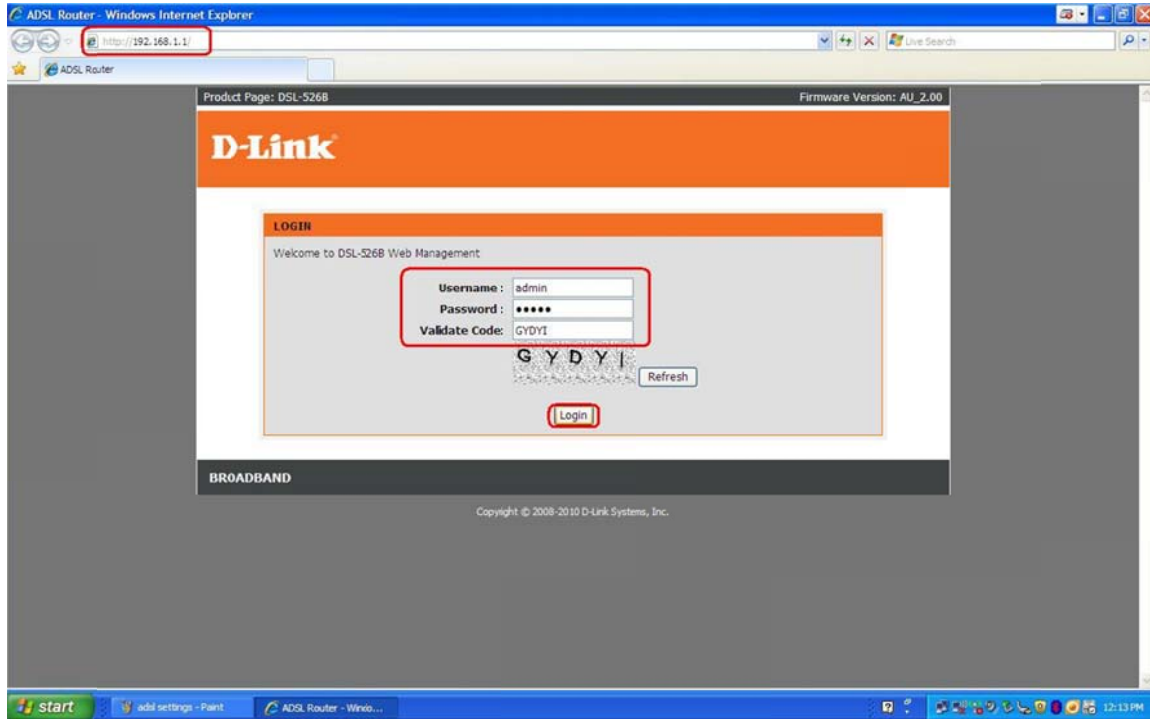
DSL-526B – How to connect via ADSL 1



This document shows how to disable ADSL 2 / 2+ and connect via ADSL 1

1. Log in to the router setup page with the computer connected to the Ethernet port.

- URL: <http://192.168.1.1> (default)
- Username: admin
- Password: admin (default)
- Validate Code: (randomly generated)

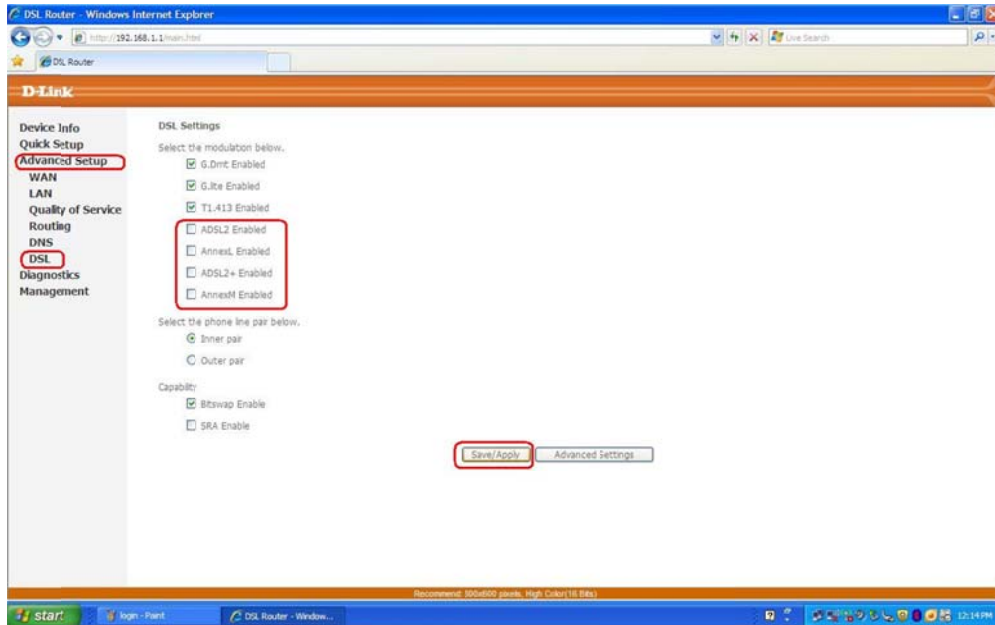


2. Click **Advanced Setup** on the left hand side menu.

2a. Then click **DSL** at the sub-menu

2b. Uncheck the boxes for the following options:

- **ADSL2 Enabled**
- **AnnexL Enabled**
- **ADSL2+ Enabled**
- **AnnexM Enabled**



3. Click **Save/Apply**