

# DSL-604+ Screenies

Firmware: R2.21.002.11.b3t13au

Default Modulation type is G.DMT, Antennas cannot be detached.

DSL-604+ - Microsoft Internet Explorer

File Edit View Favorites Tools Help

Back Forward Stop Home Search Favorites Media

Address <http://192.168.0.1/main/pMain.html> Go

**D-Link®**  
Building Networks for People

DSL-604+

- Configuration
  - Router/Bridge Configuration
  - Connection Profile
  - Ethernet IP Address
  - Proxy DNS
  - DHCP Configuration on LAN
  - NAT Configuration
  - IP Masquerade Pass Through
  - IP Masquerade Timer
  - NAT ALGs
  - Port Redirection
  - Static Route Configuration
  - Advanced Filtering & Firewall
  - RIP
  - Date / Time
  - UPnP Configuration
  - Wireless Configuration
- Maintenance
- Summary

## Router/Bridge Configuration

### Connection Profile

1 AU\_PPPoE, VPI=8, VCI=35, Router with PPPoE

### PPPoE Configuration on WAN

Auto Refresh

**PPPoE Login**

Encapsulation Method LLC

Login User Name

Login Password

Confirm Password

Authentication

Connect On Demand

Idle Time  minutes

IP Control

Static IP  .

**PPP Information**

IP Address 0.0.0.0

Gateway 0.0.0.0

Connection Status Physical line error

OK Connect Disconnect

Done Internet

Connection Profiles the same as the previous DSL-50x range, New IP Control option.

DSL-604+ - Microsoft Internet Explorer

File Edit View Favorites Tools Help

Back Forward Stop Reload Home Search Favorites Media Print Mail People

Address <http://192.168.0.1/main/pMain.html> Go

# D-Link®

Building Networks for People

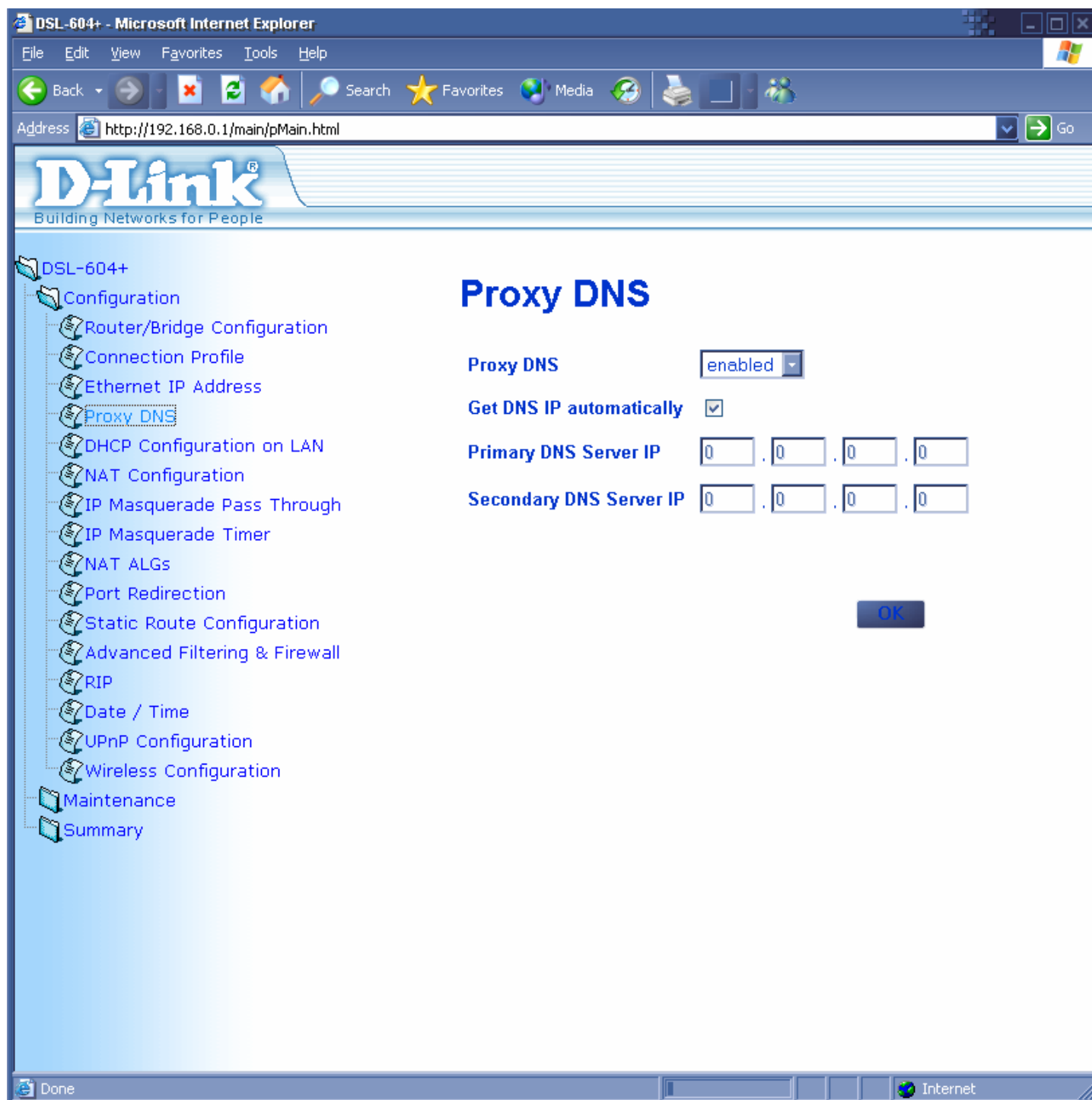
## DSL-604+

- Configuration
  - Router/Bridge Configuration
  - Connection Profile**
  - Ethernet IP Address
  - Proxy DNS
  - DHCP Configuration on LAN
  - NAT Configuration
  - IP Masquerade Pass Through
  - IP Masquerade Timer
  - NAT ALGs
  - Port Redirection
  - Static Route Configuration
  - Advanced Filtering & Firewall
  - RIP
  - Date / Time
  - UPnP Configuration
  - Wireless Configuration
- Maintenance
- Summary

## Connection Profile

Profile Name	VPI	VCI	Connection Type
1 AU_PPPoE	8	35	Router with PPPoE
2 AU_PPPoA	8	35	Router with PPPoA
3 NZ_PPPoA	0	100	Router with PPPoA
4 AU_RouterR1483	8	35	Router with R1483 Bridged Encap
5 AU_IPoA	8	35	Router with IPoA
6 AU_Bridge	8	35	Bridge with RFC 1483
7 ISP1	1	32	Router with IPoA
8	0	0	





Implemented Primary and Secondary DNS IP Addresses.

DSL-604+ - Microsoft Internet Explorer

File Edit View Favorites Tools Help

Back Forward Stop Reload Home Search Favorites Media Print Mail People

Address <http://192.168.0.1/main/pMain.html> Go

# D-Link®

Building Networks for People

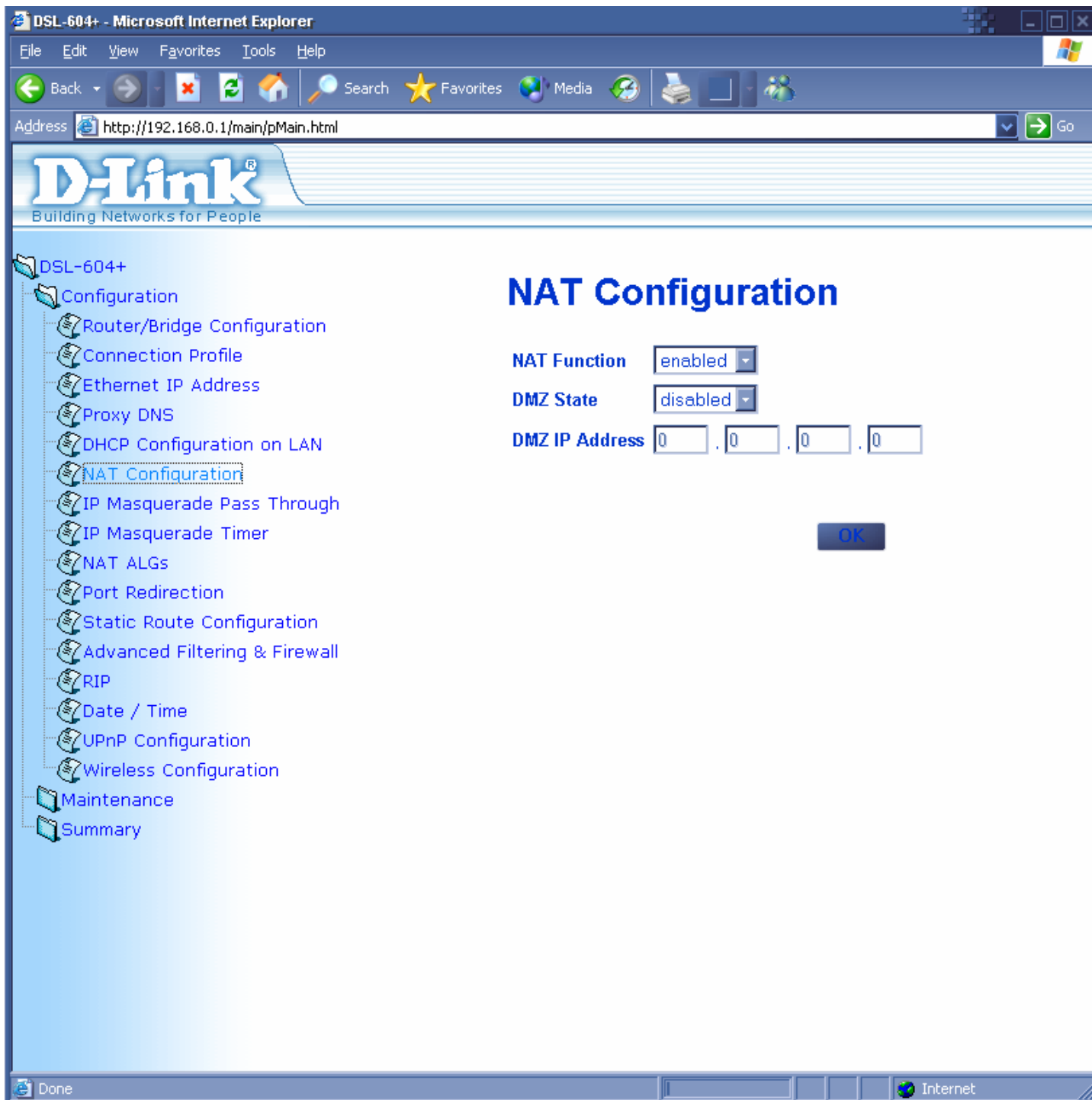
- DSL-604+
- Configuration
  - Router/Bridge Configuration
  - Connection Profile
  - Ethernet IP Address
  - Proxy DNS
  - DHCP Configuration on LAN**
  - NAT Configuration
  - IP Masquerade Pass Through
  - IP Masquerade Timer
  - NAT ALGs
  - Port Redirection
  - Static Route Configuration
  - Advanced Filtering & Firewall
  - RIP
  - Date / Time
  - UPnP Configuration
  - Wireless Configuration
- Maintenance
- Summary

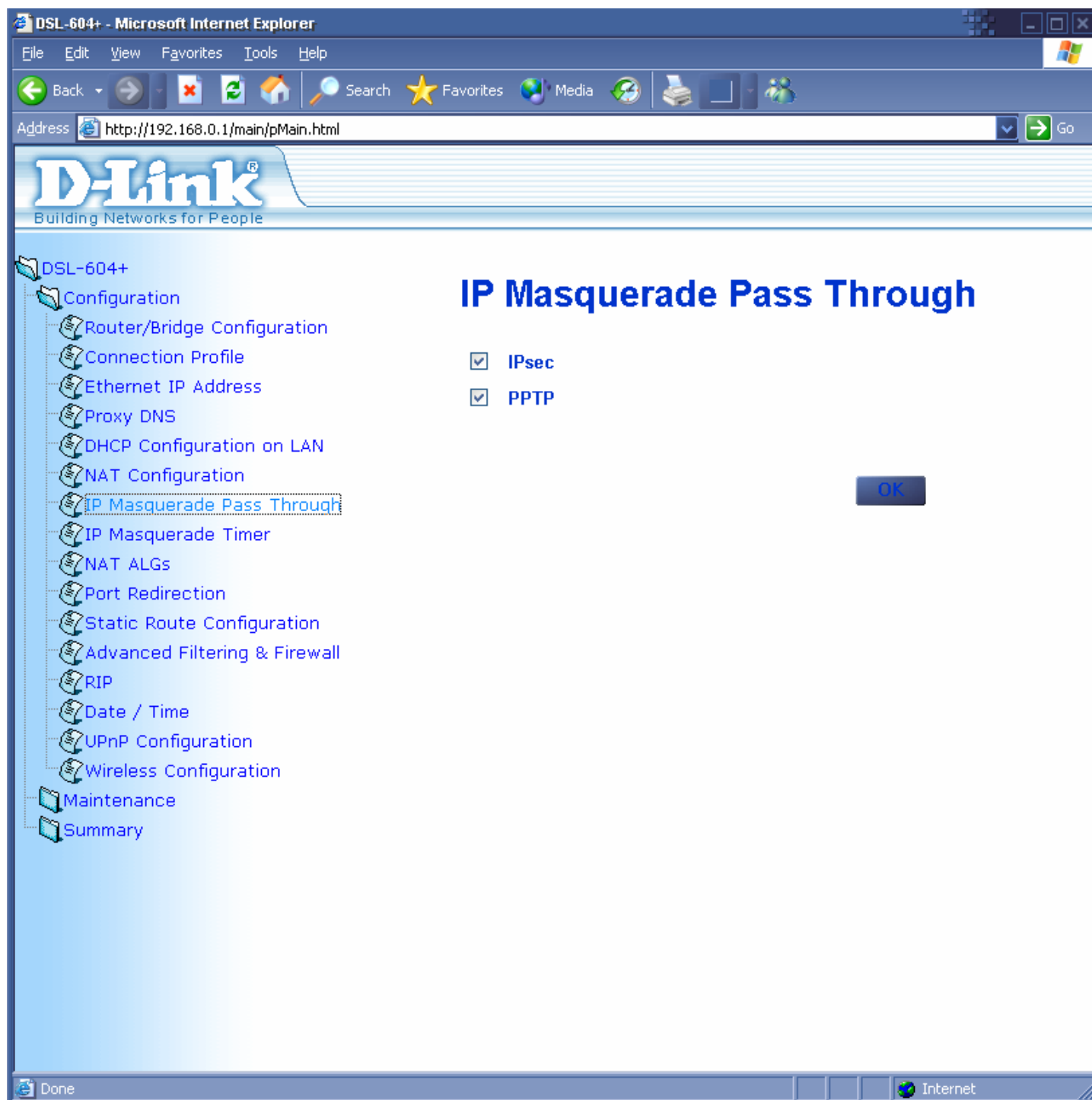
## DHCP Configuration on LAN

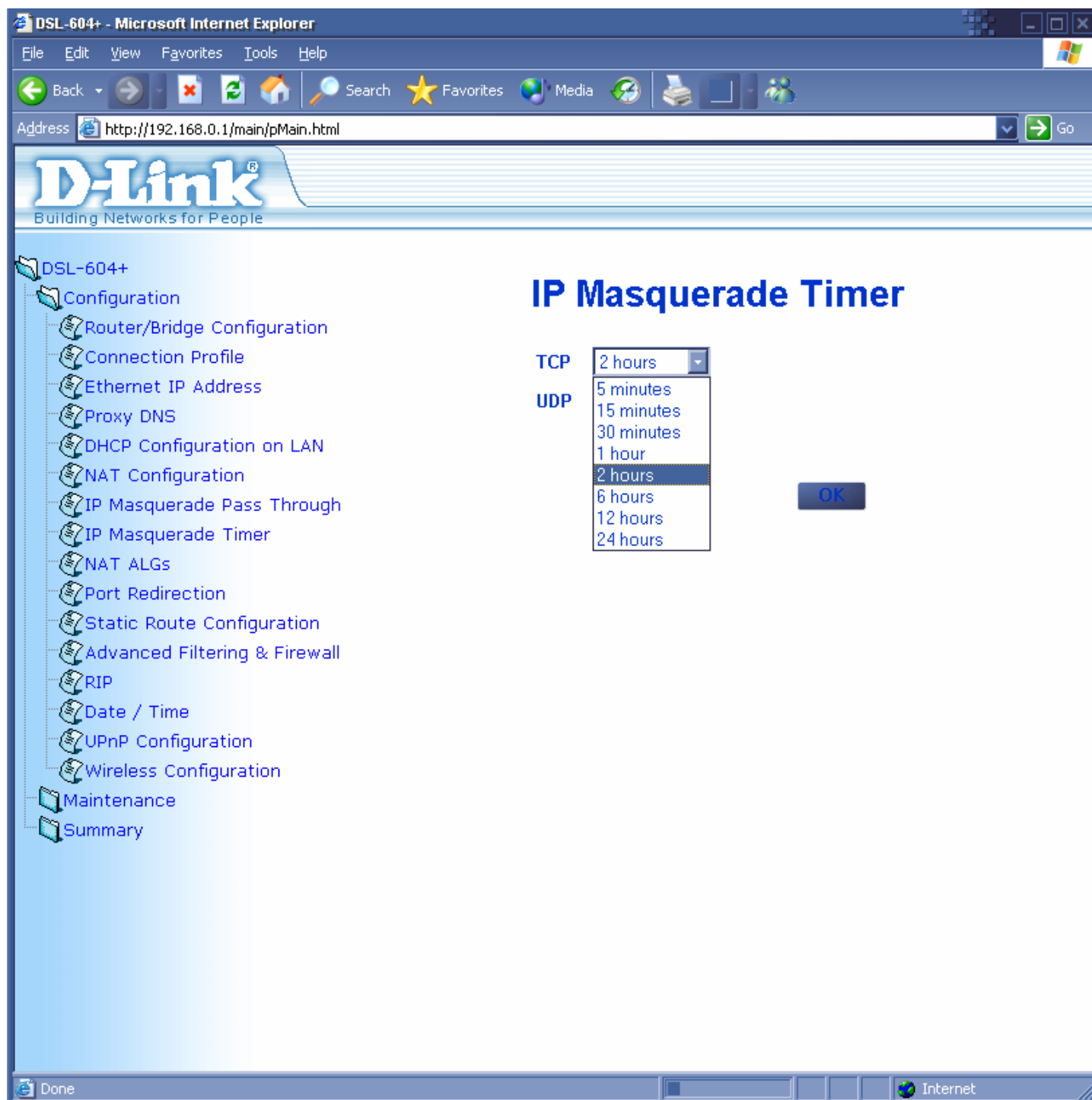
Start IP Address	192	.	168	.	0	.	2
End IP Address	192	.	168	.	0	.	33
Netmask	255.255.255.0 (/24)						
Default Gateway	192	.	168	.	0	.	1
Leased Time	72	hour					
Primary DNS	192	.	168	.	0	.	1
Secondary DNS	0	.	0	.	0	.	0
Primary WINS	0	.	0	.	0	.	0
Secondary WINS	0	.	0	.	0	.	0
Domain Name	<input type="text"/>						
State	enabled						

OK

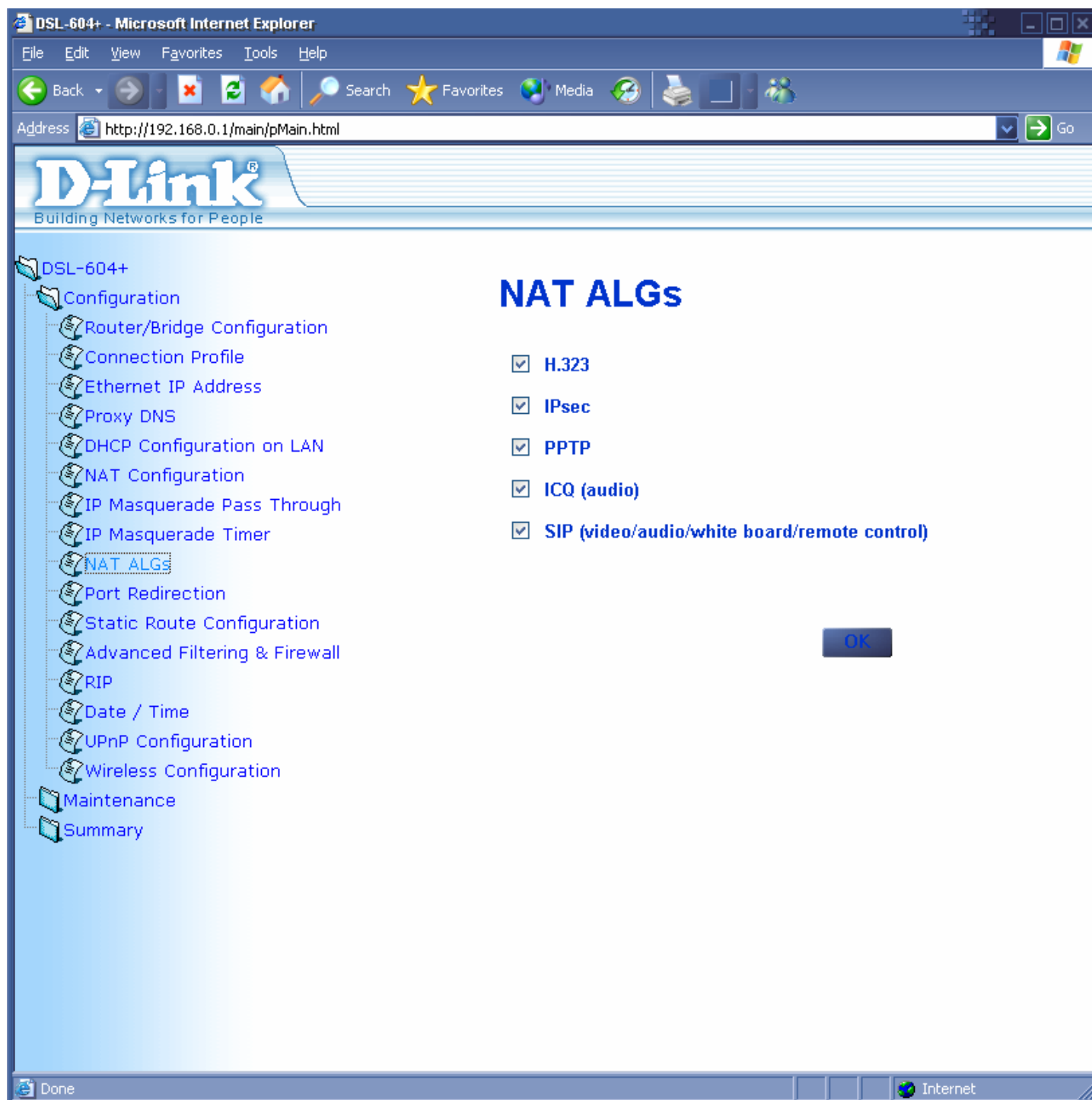
Done Internet











DSL-604+ - Microsoft Internet Explorer

File Edit View Favorites Tools Help

Back Forward Stop Reload Home Search Favorites Media Print Mail Address http://192.168.0.1/main/pMain.html Go

# D-Link®

Building Networks for People

DSL-604+

- Configuration
  - Router/Bridge Configuration
  - Connection Profile
  - Ethernet IP Address
  - Proxy DNS
  - DHCP Configuration on LAN
  - NAT Configuration
  - IP Masquerade Pass Through
  - IP Masquerade Timer
  - NAT ALGs
  - Port Redirection
  - Static Route Configuration
  - Advanced Filtering & Firewall
  - RIP
  - Date / Time
  - UPnP Configuration
  - Wireless Configuration
- Maintenance
- Summary

## Port Redirection

Port Redirection State **enabled**

Existing Entry 0

Valid Entry 0 **Apply**

The entries in gray color are mapped by UPnP.

Index	State	Protocol	Internet		Local
			Start Port	End Port	Local IP Address

Select index to set **Not selected** **Modify** **Delete** **Clear**

State **enabled**

Protocol **TCP**

Internet **Well-known port**

Start Port 0

End Port 0

Local IP Address 0 . 0 . 0 . 0 **Add**

Done Internet

DSL-604+ - Microsoft Internet Explorer

File Edit View Favorites Tools Help

Back Forward Stop Reload Home Search Favorites Media Print Mail People

Address http://192.168.0.1/main/pMain.html Go

# D-Link®

Building Networks for People

DSL-604+

- Configuration
  - Router/Bridge Configuration
  - Connection Profile
  - Ethernet IP Address
  - Proxy DNS
  - DHCP Configuration on LAN
  - NAT Configuration
  - IP Masquerade Pass Through
  - IP Masquerade Timer
  - NAT ALGs
  - Port Redirection
  - Static Route Configuration**
  - Advanced Filtering & Firewall
  - RIP
  - Date / Time
  - UPnP Configuration
  - Wireless Configuration
- Maintenance
- Summary

## Static Route Configuration

Existing Entry 0  
Valid Entry 0 [Apply](#)

Index	State	Item Name	IP Address/Subnet Mask	Gateway	Interface	Metric
-------	-------	-----------	------------------------	---------	-----------	--------

---

Select index to set Not selected [Modify](#) [Delete](#) [Clear](#)

Item Name

State enabled

IP Address  .  .  .

Subnet Mask 255.255.255.255 (/32)

Gateway  .  .  .

Interface LAN

Metric

[Add](#)

Done Internet

DSL-604+ - Microsoft Internet Explorer

File Edit View Favorites Tools Help

Back Forward Stop Home Search Favorites Media

Address <http://192.168.0.1/main/pMain.html> Go

# D-Link®

Building Networks for People

DSL-604+

- Configuration
  - Router/Bridge Configuration
  - Connection Profile
  - Ethernet IP Address
  - Proxy DNS
  - DHCP Configuration on LAN
  - NAT Configuration
  - IP Masquerade Pass Through
  - IP Masquerade Timer
  - NAT ALGs
  - Port Redirection
  - Static Route Configuration
  - Advanced Filtering & Firewall**
  - RIP
  - Date / Time
  - UPnP Configuration
  - Wireless Configuration
- Maintenance
- Summary

## Advanced Filtering & Firewall

Existing Entry 0 IP Filter State disabled

Valid Entry 0 If not matched Pass [Apply](#)

Index	State	Item Name	Pass or Block	Direction	Protocol	Source			Destination		
						IP Address/Subnet Mask	Start Port	End Port	IP Address/Subnet Mask	Start Port	End Port

Select index to set Not selected [Modify](#) [Delete](#) [Clear](#)

Item Name

State enabled

Pass or Block Pass

Direction In

Protocol ICMP

Source

IP Address 0 . 0 . 0 . 0

Subnet Mask 0.0.0.0 (/0)

=

Start Port 0

End Port 0

Destination

IP Address 0 . 0 . 0 . 0

Subnet Mask 0.0.0.0 (/0)

=

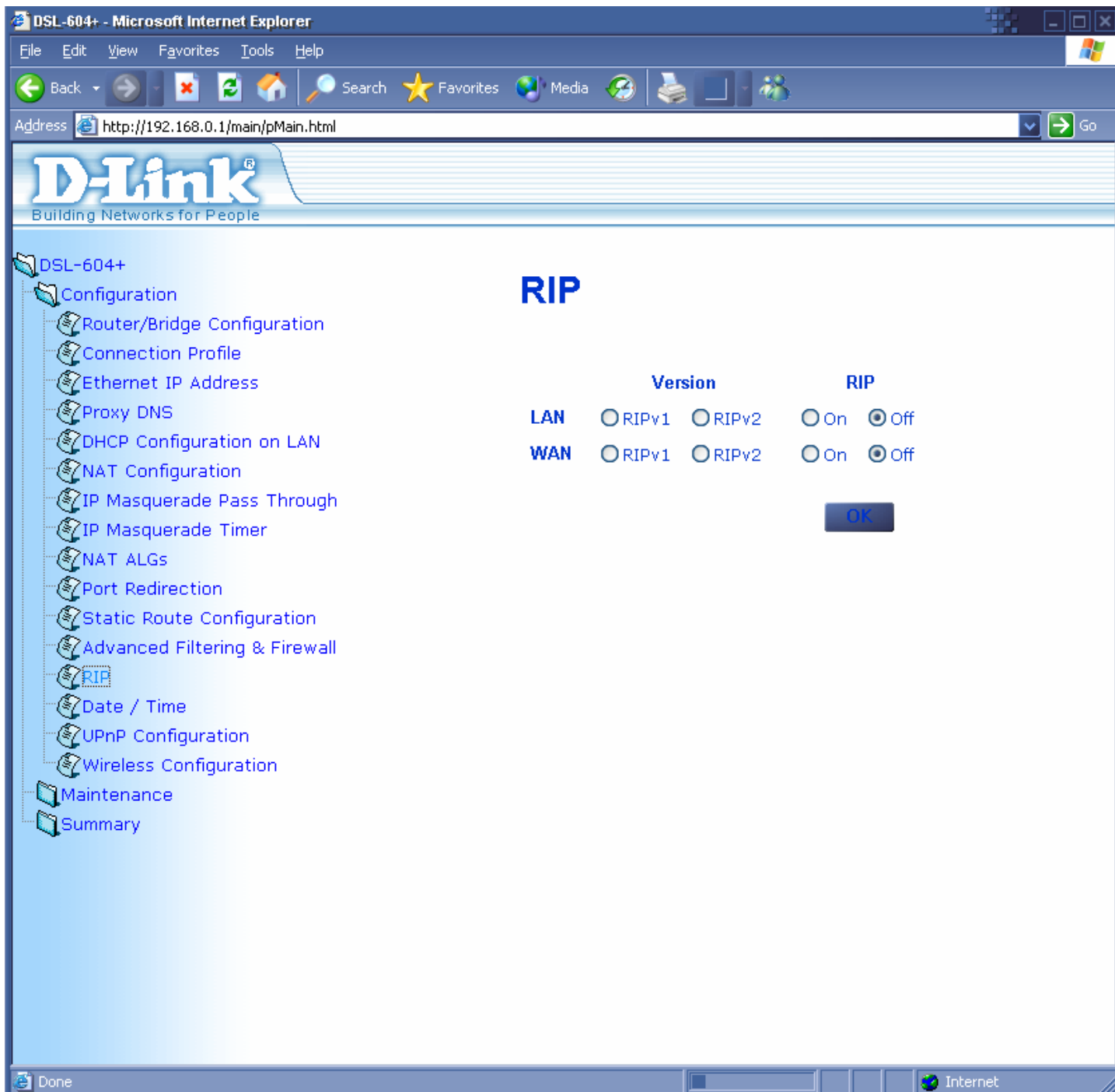
Start Port 0

End Port 0

Select index to add/move New [Add](#) [Move](#)

(Insert the entry before the selected index)

Internet



DSL-604+ - Microsoft Internet Explorer

File Edit View Favorites Tools Help

Back Forward Stop Reload Home Search Favorites Media Print Mail

Address <http://192.168.0.1/main/pMain.html> Go

# D-Link®

Building Networks for People

- DSL-604+
- Configuration
  - Router/Bridge Configuration
  - Connection Profile
  - Ethernet IP Address
  - Proxy DNS
  - DHCP Configuration on LAN
  - NAT Configuration
  - IP Masquerade Pass Through
  - IP Masquerade Timer
  - NAT ALGs
  - Port Redirection
  - Static Route Configuration
  - Advanced Filtering & Firewall
  - RIP
  - Date / Time
  - UPnP Configuration
  - Wireless Configuration
- Maintenance
- Summary

## Date / Time

**NTP State** Set device time with local PC time

**NTP Server IP** NTP enabled  
Set device time with local PC time

**Timezone** GMT+08:00

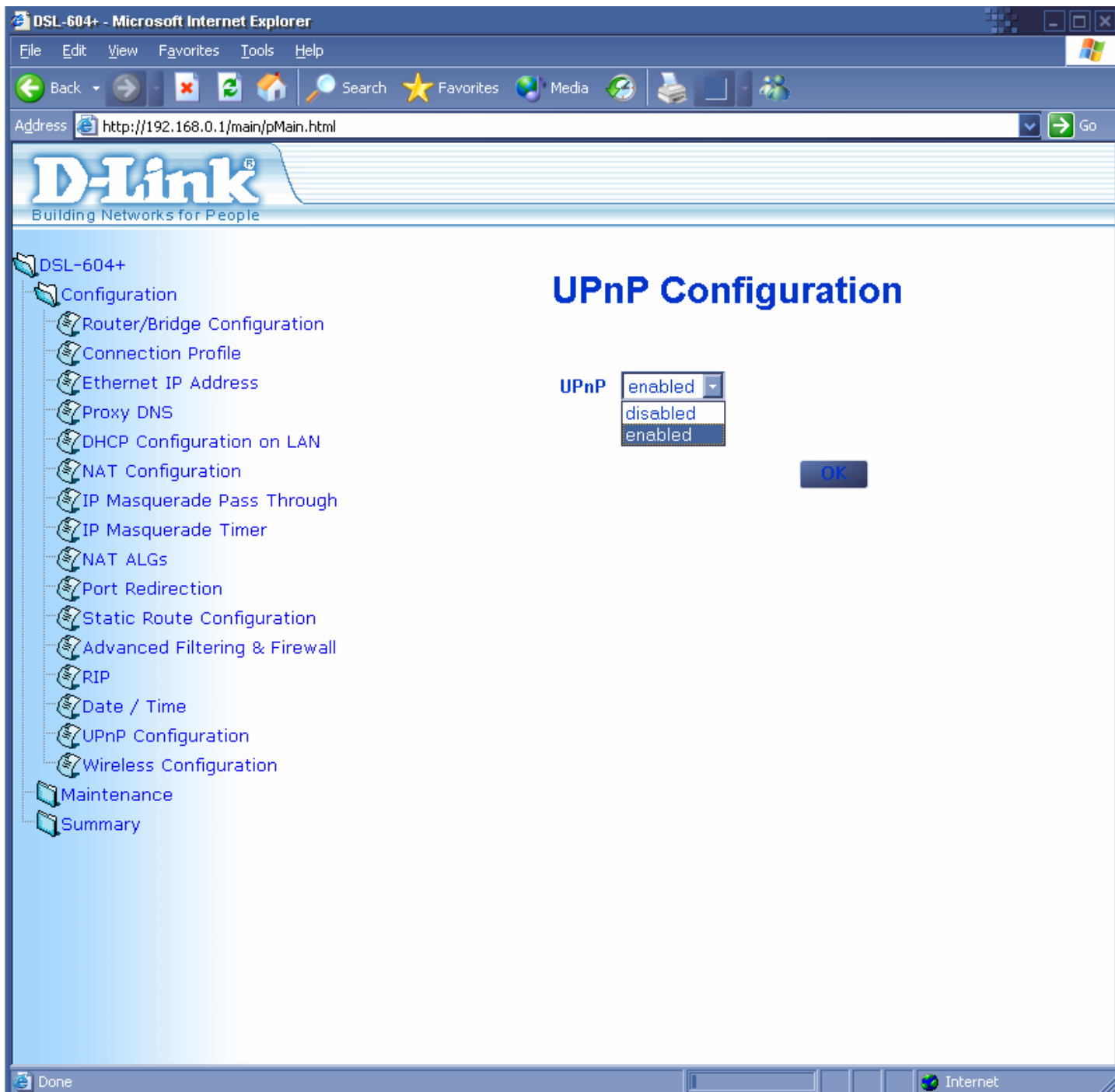
---

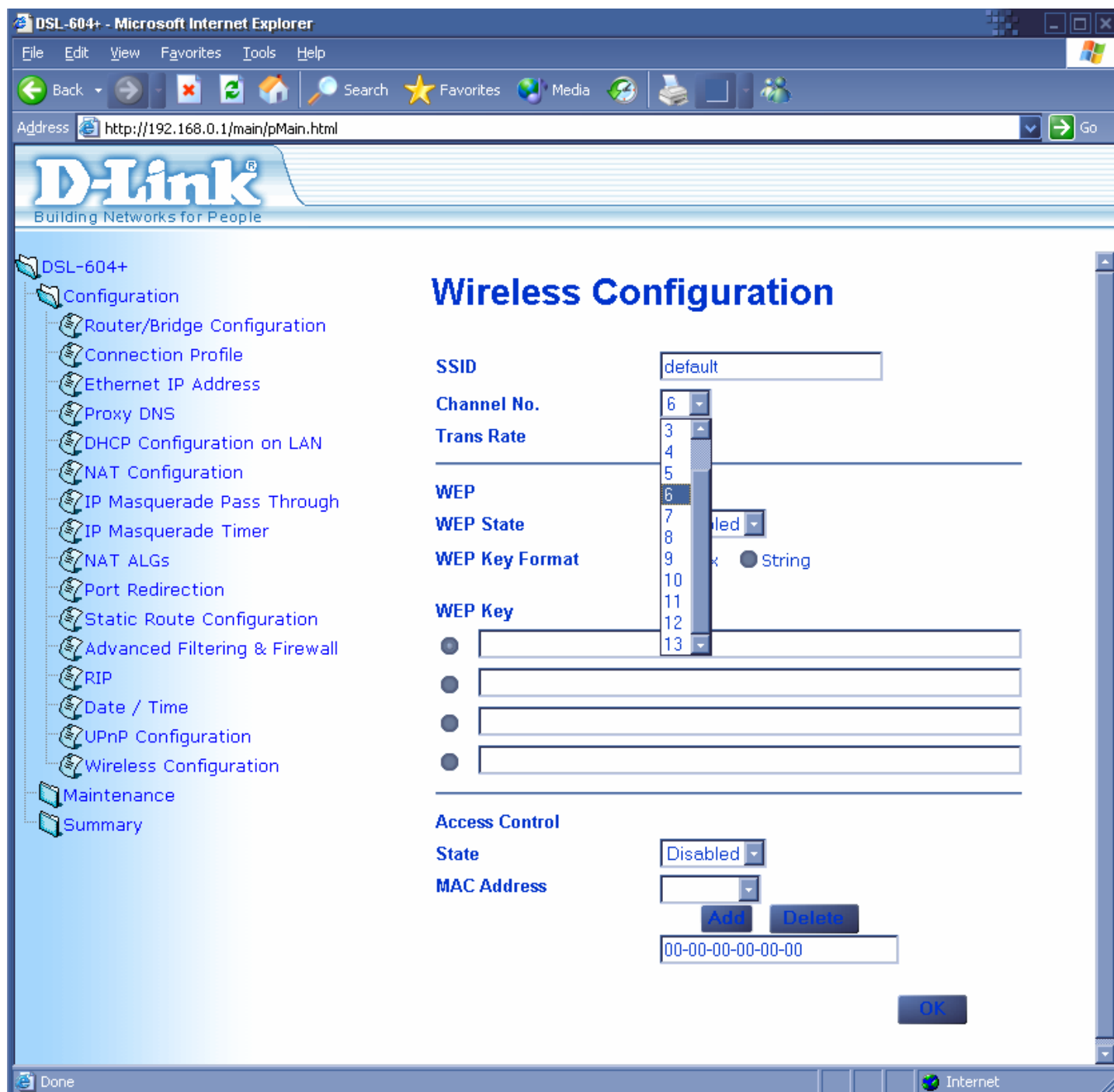
**System time of the modem**

Date	01	/	01	/	1970
Time	00	:	10	:	59

OK

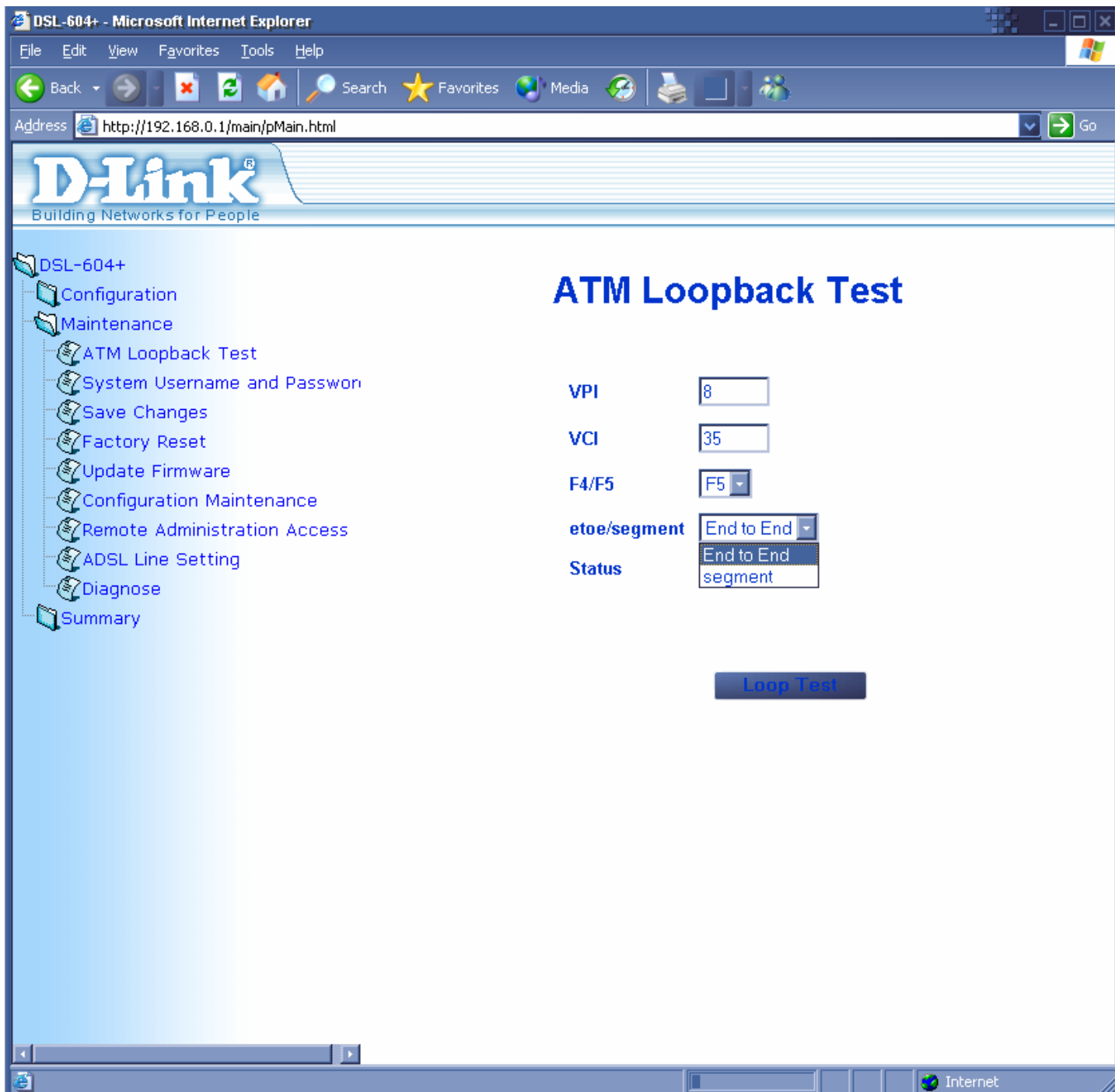
Done Internet

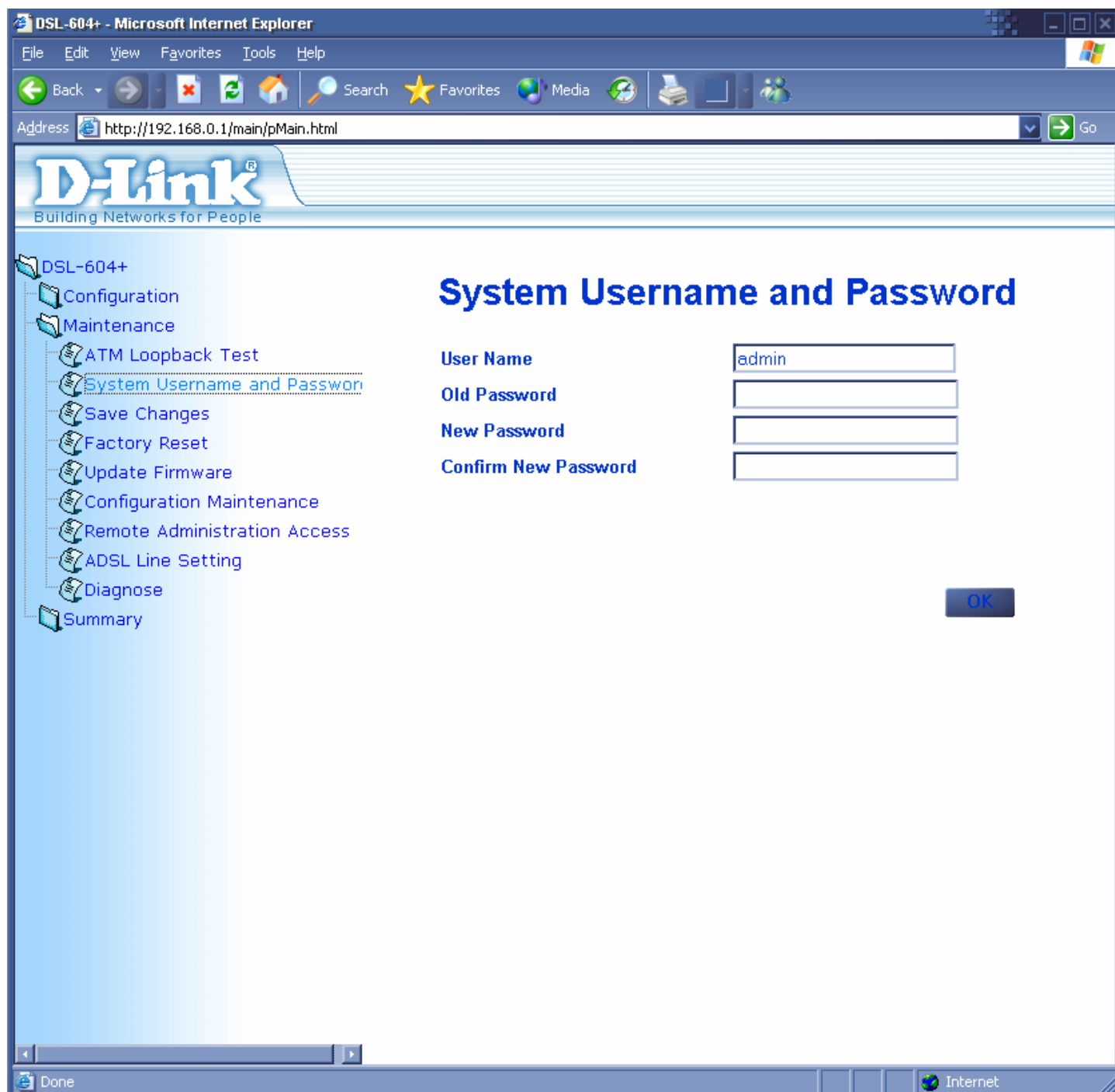


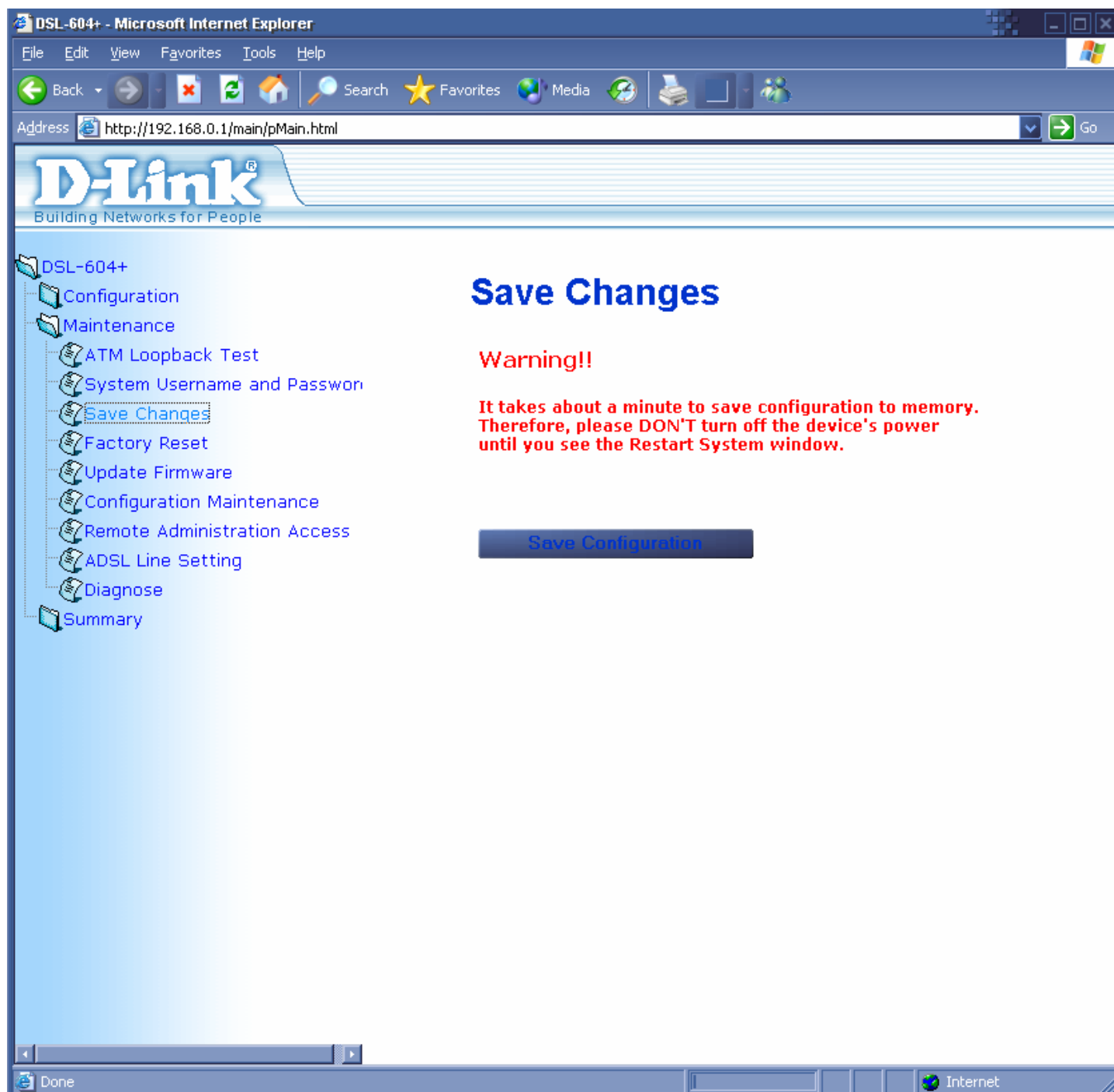


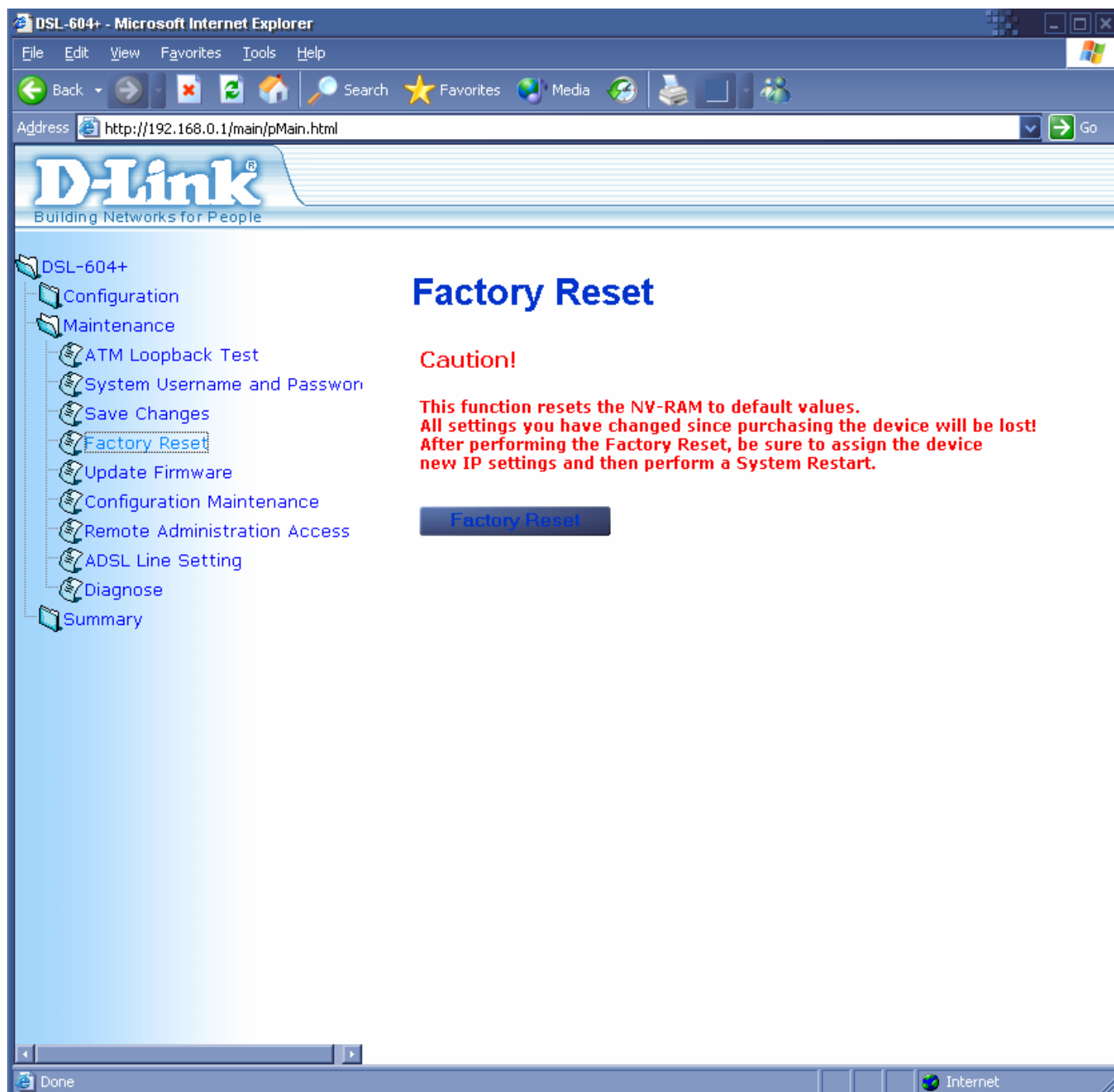
Supports up to 256bit Encryption.

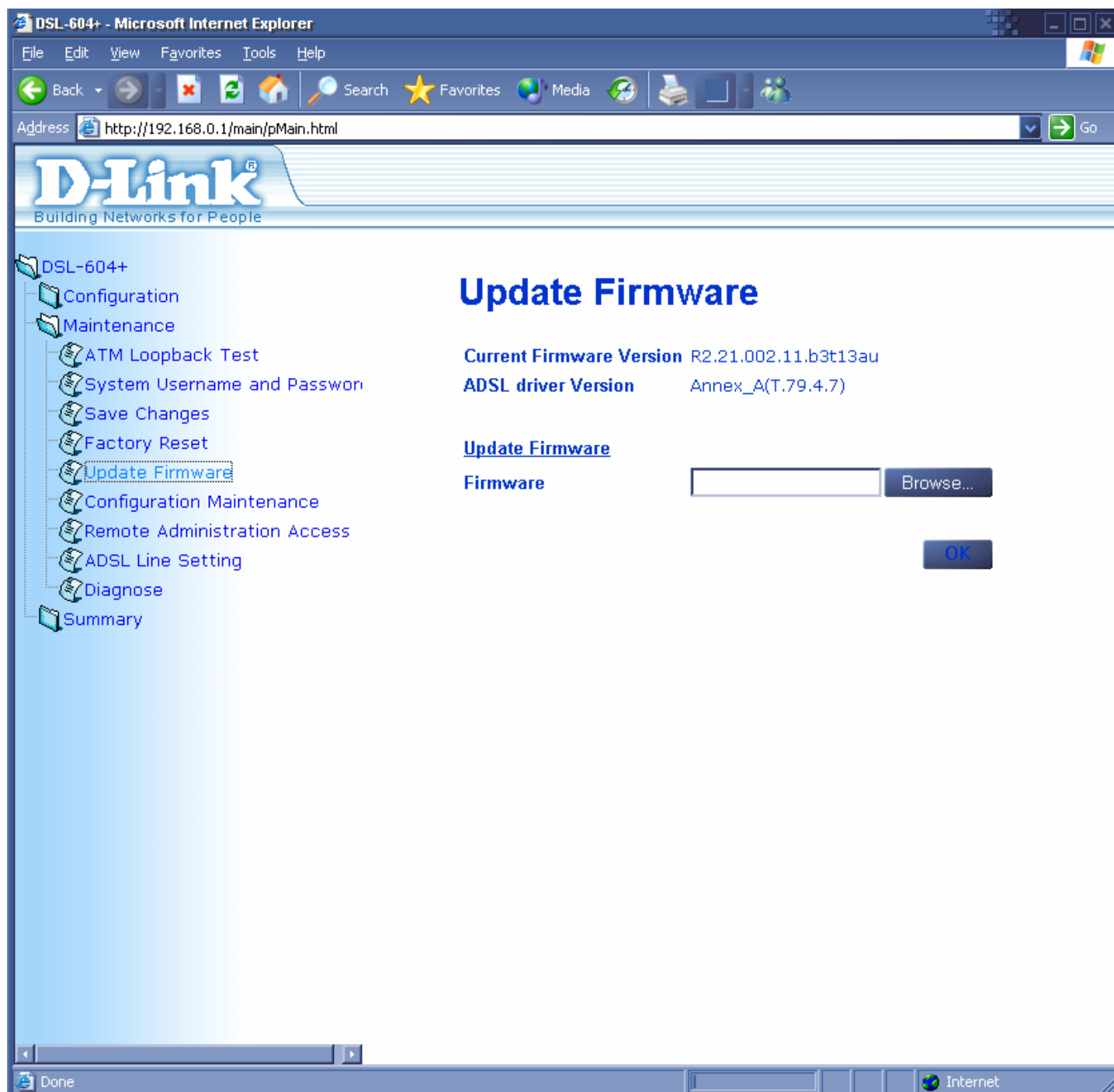


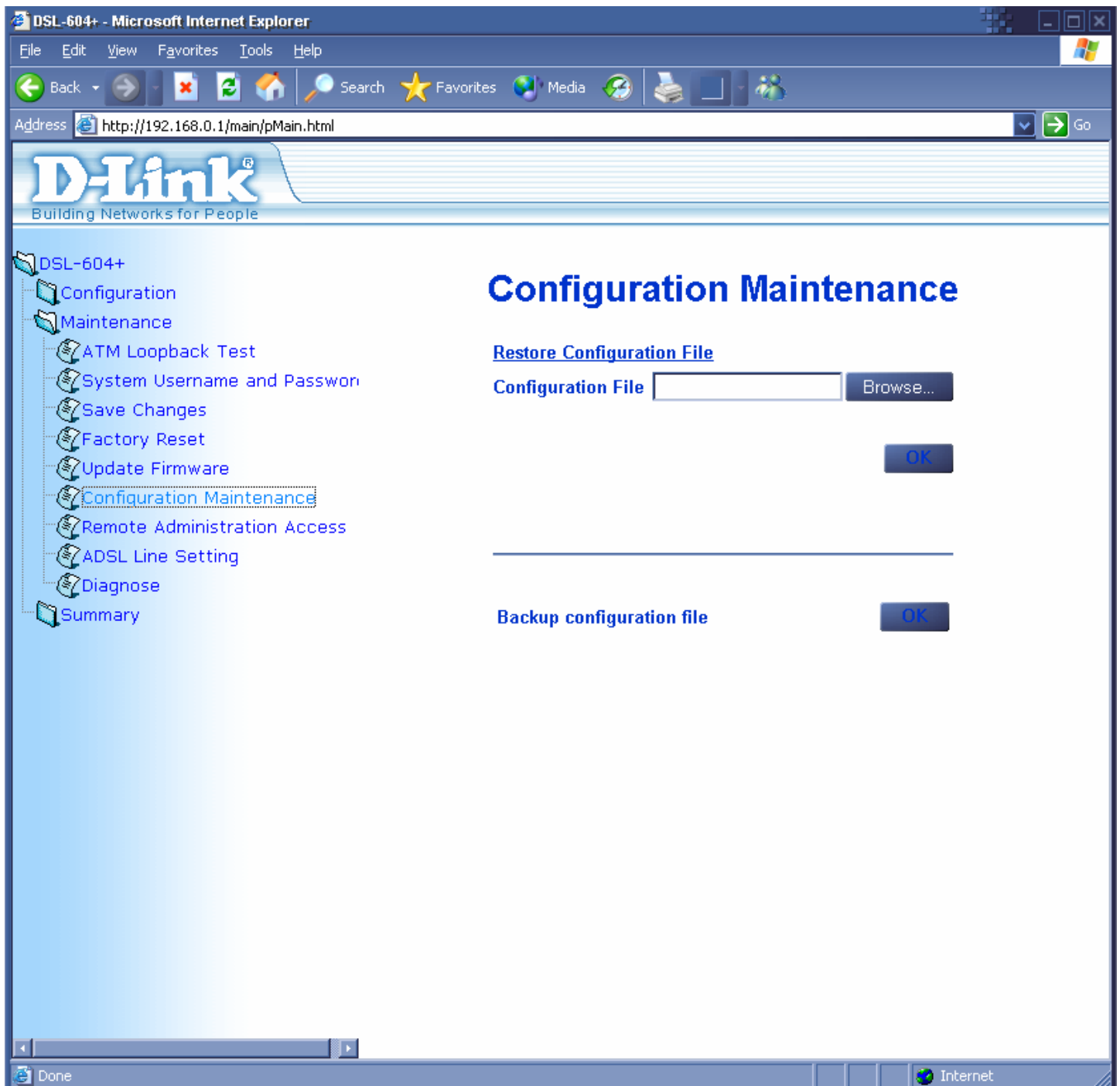


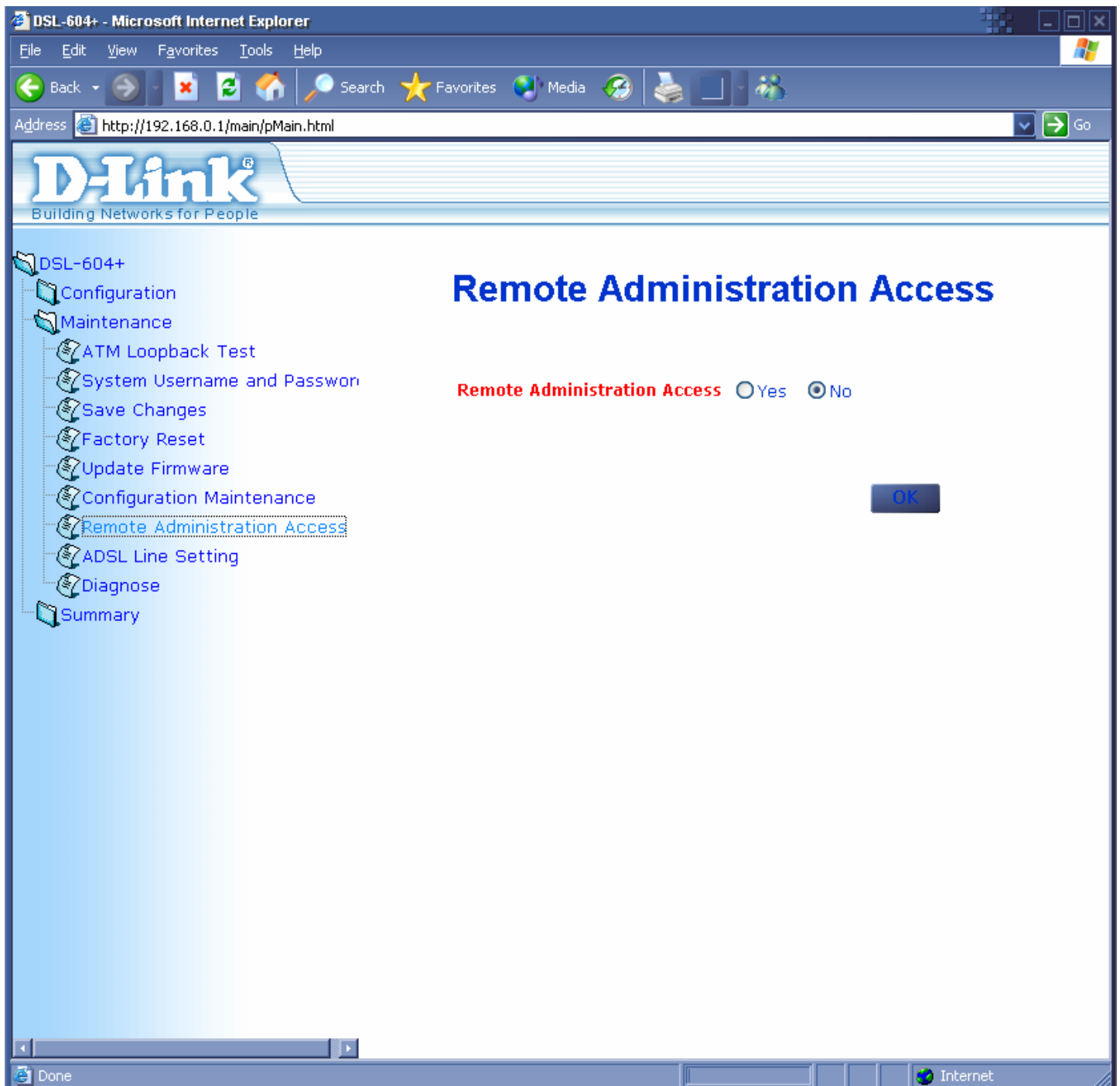


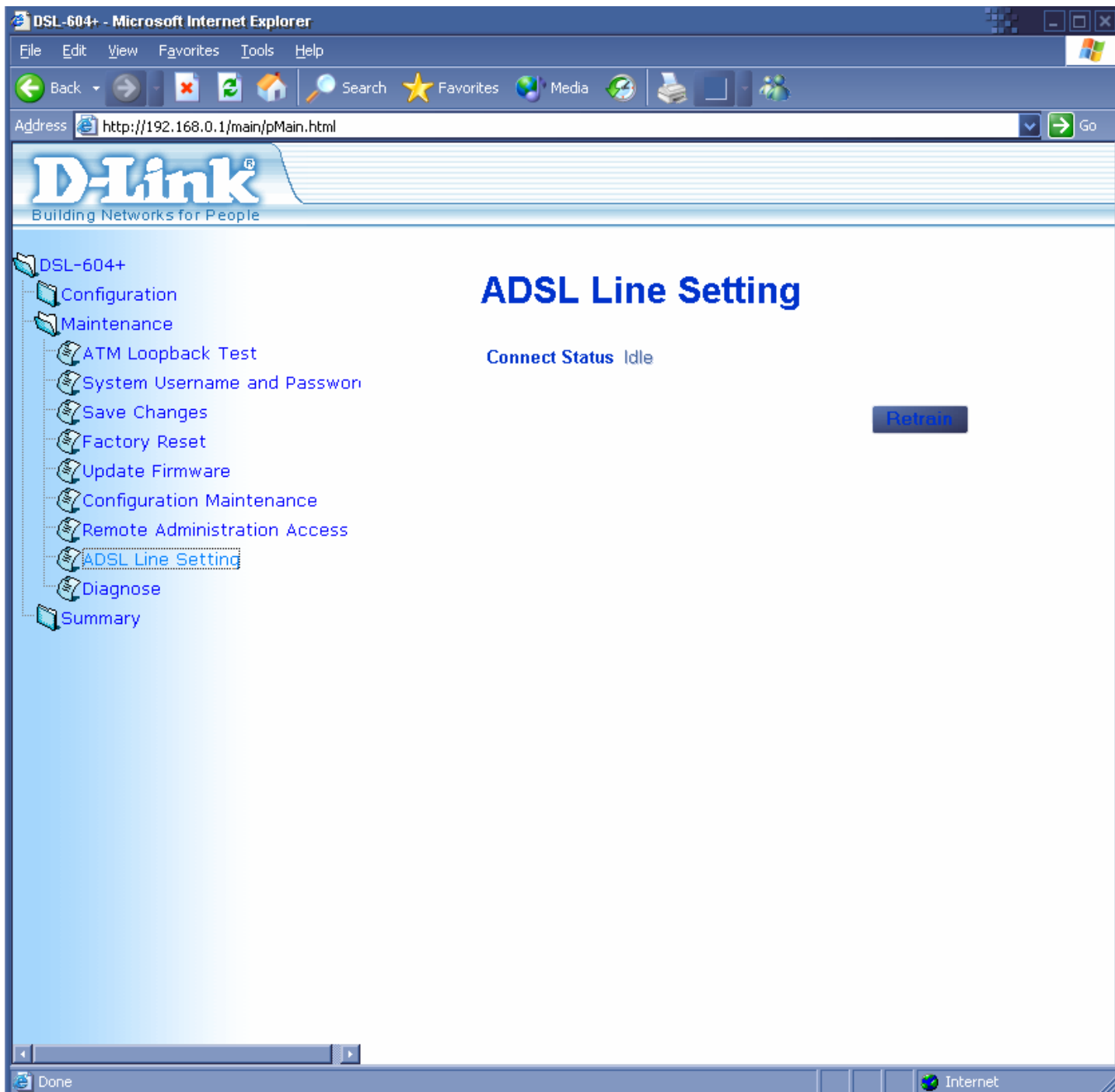




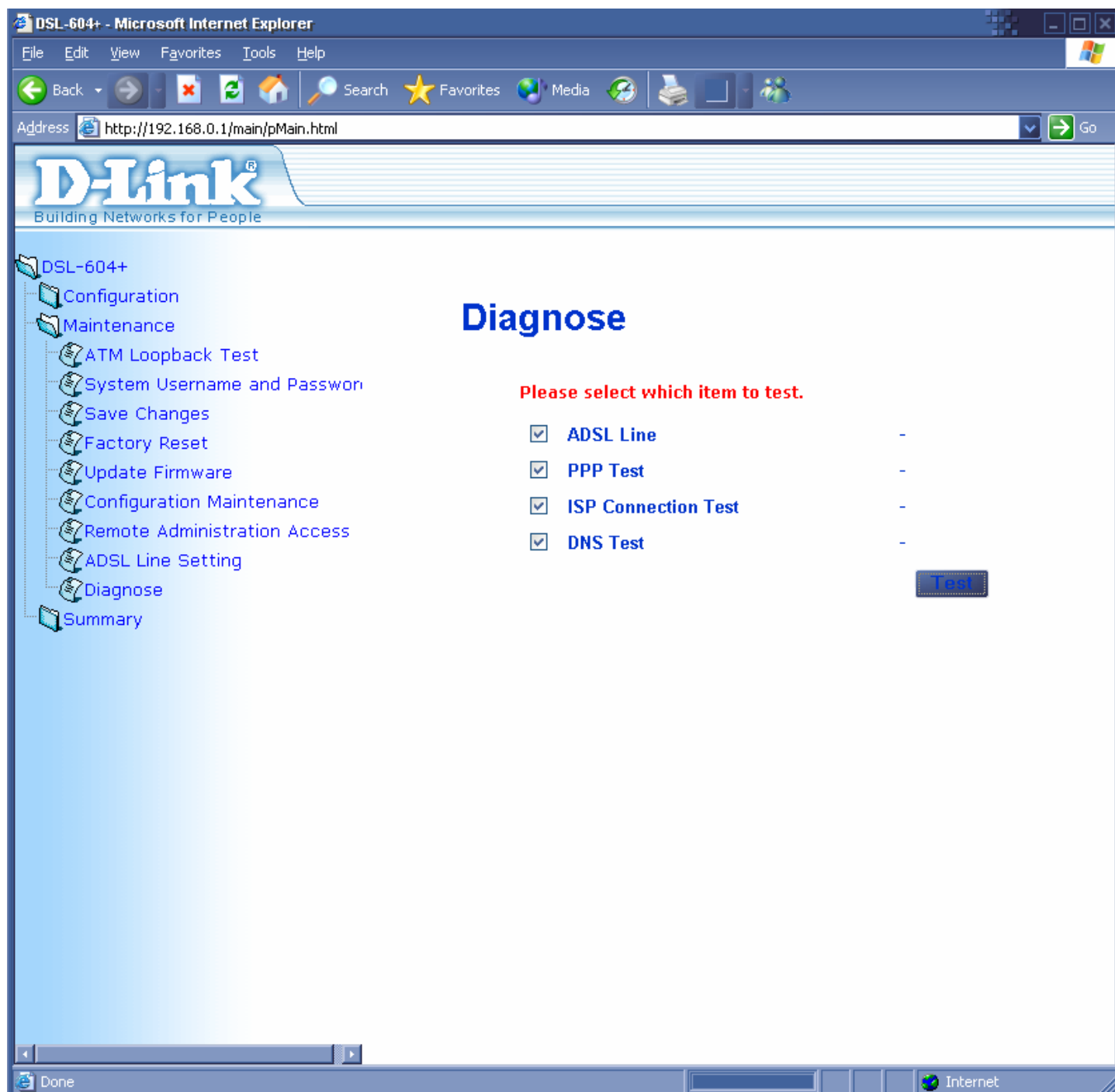












DSL-604+ - Microsoft Internet Explorer

File Edit View Favorites Tools Help

Back Forward Stop Reload Home Search Favorites Media

Address <http://192.168.0.1/main/pMain.html> Go

# D-Link®

Building Networks for People

- DSL-604+
- Configuration
- Maintenance
- Summary
  - Summary**
  - DHCP Allocation Table
  - Port Redirection Summary
  - Runtime Routing Table
  - Advanced Filtering & Firewall Su
  - Line Condition
  - Carrier Chart

## Summary

IP Address Configuration	IP Address	192.168.0.1
	Subnet Mask	255.255.255.0
	MAC Address	00:05:5d:7f:52:4b
PPPoE Login	Login User Name	user
	Authentication	chap
PPP Information	IP Address	0.0.0.0
	Connection Status	Physical line error
PVC	VPI	8
	VCI	35
Connection Type	Mode	Router with PPPoE
	Encapsulation Method	LLC
Proxy DNS		enabled
	Get DNS IP automatically	enabled
	DNS Server IP	0.0.0.0
DHCP Configuration		enabled
UPnP State		enabled
NAT Configuration		enabled
DMZ State		disabled
IP Filter State		disabled
Date / Time		disabled
Remote Administration Access		disabled

Done Internet

DSL-604+ - Microsoft Internet Explorer

File Edit View Favorites Tools Help

Back Forward Stop Reload Home Search Favorites Media Print

Address <http://192.168.0.1/main/pMain.html> Go

**D-Link**  
Building Networks for People

DSL-604+

- Configuration
- Maintenance
- Summary
  - Summary
  - DHCP Allocation Table**
  - Port Redirection Summary
  - Runtime Routing Table
  - Advanced Filtering & Firewall Su
  - Line Condition
  - Carrier Chart

## DHCP Allocation Table

Index	MAC Address	IP Address	Computer Name	Leased Time
-------	-------------	------------	---------------	-------------

Internet

Address  http://192.168.0.1/main/pMain.html



The entries in gray color are mapped by UPnP.

Index	Protocol	Internet		Local
		Start Port	End Port	Local IP Address
1	TCP	1024	65535	10.10.10.1
2	UDP	1024	65535	10.10.10.1
3	TCP	1024	65535	10.10.10.1
4	UDP	1024	65535	10.10.10.1
5	TCP	1024	65535	10.10.10.1
6	UDP	1024	65535	10.10.10.1
7	TCP	1024	65535	10.10.10.1
8	UDP	1024	65535	10.10.10.1
9	TCP	1024	65535	10.10.10.1
10	UDP	1024	65535	10.10.10.1
11	TCP	1024	65535	10.10.10.1
12	UDP	1024	65535	10.10.10.1
13	TCP	1024	65535	10.10.10.1
14	UDP	1024	65535	10.10.10.1
15	TCP	1024	65535	10.10.10.1
16	UDP	1024	65535	10.10.10.1
17	TCP	1024	65535	10.10.10.1
18	UDP	1024	65535	10.10.10.1
19	TCP	1024	65535	10.10.10.1
20	UDP	1024	65535	10.10.10.1
21	TCP	1024	65535	10.10.10.1
22	UDP	1024	65535	10.10.10.1
23	TCP	1024	65535	10.10.10.1
24	UDP	1024	65535	10.10.10.1
25	TCP	1024	65535	10.10.10.1
26	UDP	1024	65535	10.10.10.1
27	TCP	1024	65535	10.10.10.1
28	UDP	1024	65535	10.10.10.1
29	TCP	1024	65535	10.10.10.1
30	UDP	1024	65535	10.10.10.1
31	TCP	1024	65535	10.10.10.1
32	UDP	1024	65535	10.10.10.1
33	TCP	1024	65535	10.10.10.1
34	UDP	1024	65535	10.10.10.1
35	TCP	1024	65535	10.10.10.1
36	UDP	1024	65535	10.10.10.1
37	TCP	1024	65535	10.10.10.1
38	UDP	1024	65535	10.10.10.1
39	TCP	1024	65535	10.10.10.1
40	UDP	1024	65535	10.10.10.1
41	TCP	1024	65535	10.10.10.1
42	UDP	1024	65535	10.10.10.1
43	TCP	1024	65535	10.10.10.1
44	UDP	1024	65535	10.10.10.1
45	TCP	1024	65535	10.10.10.1
46	UDP	1024	65535	10.10.10.1
47	TCP	1024	65535	10.10.10.1
48	UDP	1024	65535	10.10.10.1
49	TCP	1024	65535	10.10.10.1
50	UDP	1024	65535	10.10.10.1
51	TCP	1024	65535	10.10.10.1
52	UDP	1024	65535	10.10.10.1
53	TCP	1024	65535	10.10.10.1
54	UDP	1024	65535	10.10.10.1
55	TCP	1024	65535	10.10.10.1
56	UDP	1024	65535	10.10.10.1
57	TCP	1024	65535	10.10.10.1
58	UDP	1024	65535	10.10.10.1
59	TCP	1024	65535	10.10.10.1
60	UDP	1024	65535	10.10.10.1
61	TCP	1024	65535	10.10.10.1
62	UDP	1024	65535	10.10.10.1
63	TCP	1024	65535	10.10.10.1
64	UDP	1024	65535	10.10.10.1
65	TCP	1024	65535	10.10.10.1
66	UDP	1024	65535	10.10.10.1
67	TCP	1024	65535	10.10.10.1
68	UDP	1024	65535	10.10.10.1

DSL-604+ - Microsoft Internet Explorer

File Edit View Favorites Tools Help

Back Forward Stop Reload Home Search Favorites Media Print

Address <http://192.168.0.1/main/pMain.html> Go

# D-Link®

Building Networks for People

- DSL-604+
- Configuration
- Maintenance
- Summary
  - Summary
  - DHCP Allocation Table
  - Port Redirection Summary
  - Runtime Routing Table**
  - Advanced Filtering & Firewall Su
  - Line Condition
  - Carrier Chart

## Runtime Routing Table

Index	Item Name	Subnet	Gateway	Interface	Metric
1	ethernet	192.168.0.0/24	0.0.0.0	LAN	1
2	ppp_route	0.0.0.0/0	0.0.0.0	WAN	1

Done Internet

DSL-604+ - Microsoft Internet Explorer

File Edit View Favorites Tools Help

Back Forward Stop Reload Home Search Favorites Media Print Mail

Address http://192.168.0.1/main/pMain.html Go

**D-Link**  
Building Networks for People

DSL-604+

- Configuration
- Maintenance
- Summary
  - Summary
  - DHCP Allocation Table
  - Port Redirection Summary
  - Runtime Routing Table
  - Advanced Filtering & Firewall Summary
  - Line Condition
  - Carrier Chart

## Advanced Filtering & Firewall Summary

Index	Item Name	Pass or Block	Direction	Protocol	Source			Destination		
					IP Address/ Subnet Mask	Start Port	End Port	IP Address/ Subnet Mask	Start Port	End Port

Done Internet

DSL-604+ - Microsoft Internet Explorer

File Edit View Favorites Tools Help

Back Forward Stop Reload Home Search Favorites Media Print Mail

Address <http://192.168.0.1/main/pMain.html> Go

# D-Link®

Building Networks for People

- DSL-604+
- Configuration
- Maintenance
- Summary
  - Summary
  - DHCP Allocation Table
  - Port Redirection Summary
  - Runtime Routing Table
  - Advanced Filtering & Firewall Su
  - Line Condition
  - Carrier Chart

## Line Condition

☐ Auto Refresh

Protocol	ADSL State	Idle	
	Data Path	Interleave	
	Operation Mode	G.DMT	

		Downstream	Upstream
Line Status	ADSL Link Speed	0 kbps	0 kbps
	SNR	0.0 dB	0.0 dB
	ATEN	0 dB	0 dB
Line Error	ADSL layer	FEC	0
		CRC	0
	ATM layer	HEC	0
Frame Counter		0	0

Loop Distance: About 0

Clear

Done Internet

