



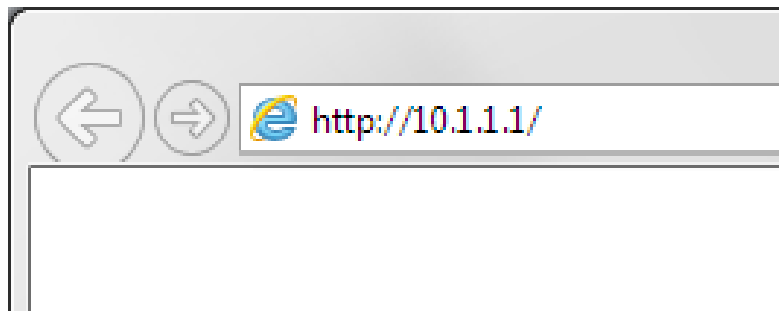
How to Configure Your Modem Router Using Setup Wizard

This document will detail how to configure your modem router for Internet and Wireless connection using the Setup Wizard accessible via a Web Browser.

Please note: running the Setup Wizard will reconfigure all your modem router settings. If your modem router has been configured before, the old configuration will be replaced with the new one upon completion of the Setup Wizard.

Step 1. Open your Internet browser e.g. Internet Explorer, Firefox, Chrome, Safari, etc. and enter the IP address of your D-Link modem in the **address bar**: http://10.1.1.1

Note: Accessing your modem's configuration pages does not require Internet connection as these pages are stored inside your modem. Your computer just needs to be connected to the modem.



Step 2. When prompted type in the Username and Password, then click on the "OK" button. If you have not changed the password for the modem administration, the factory settings are:

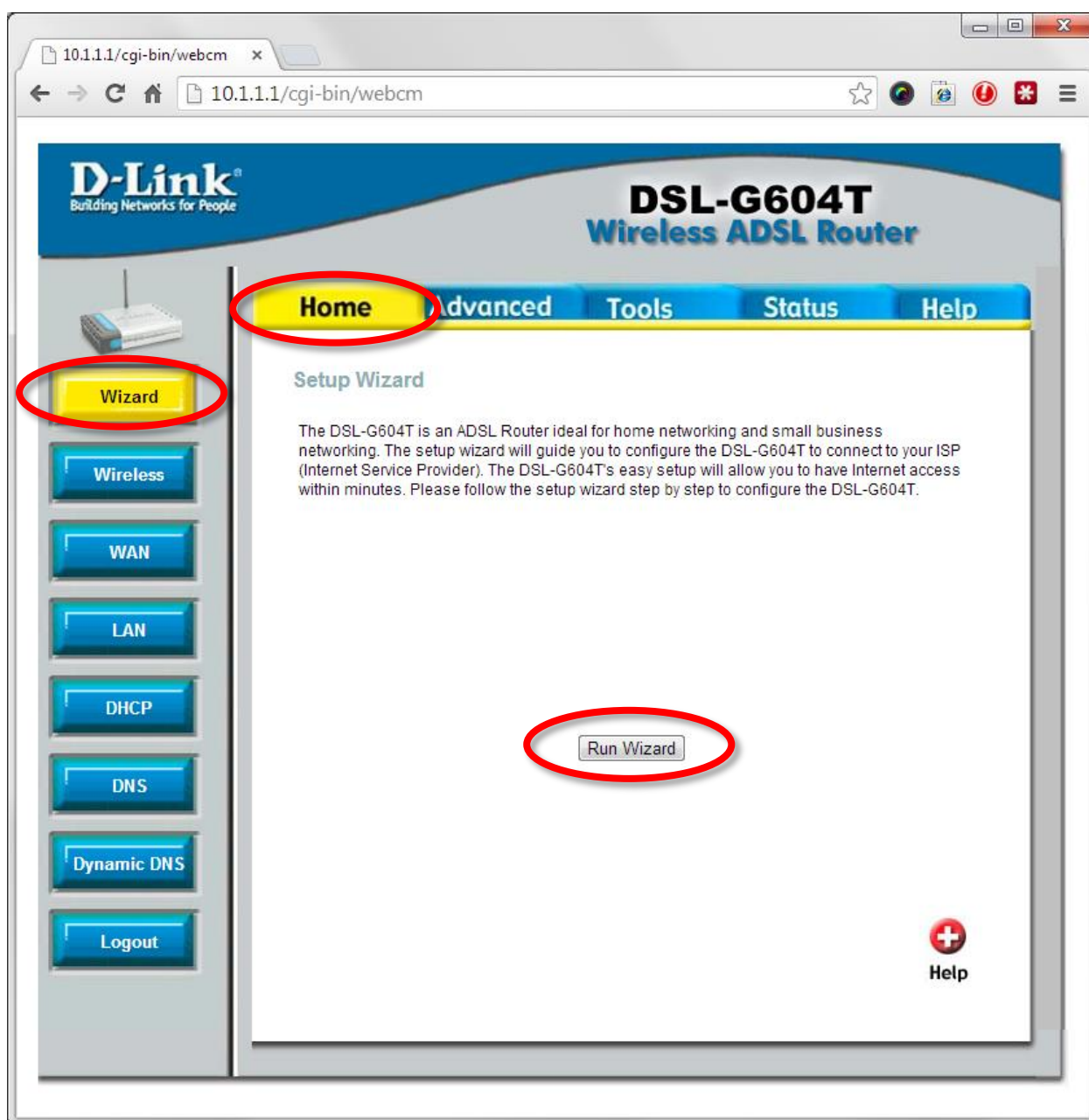
Username: admin

Password: admin



If you cannot recall the password you assigned to your modem you will need to reset the modem to factory defaults by pressing the reset button for 10 seconds. Please note that this will revert all the settings in the modem to factory settings and you will have to reconfigure it with your Internet settings and Wireless security. Make sure you have your Internet account details (given by your Internet Provider) handy.

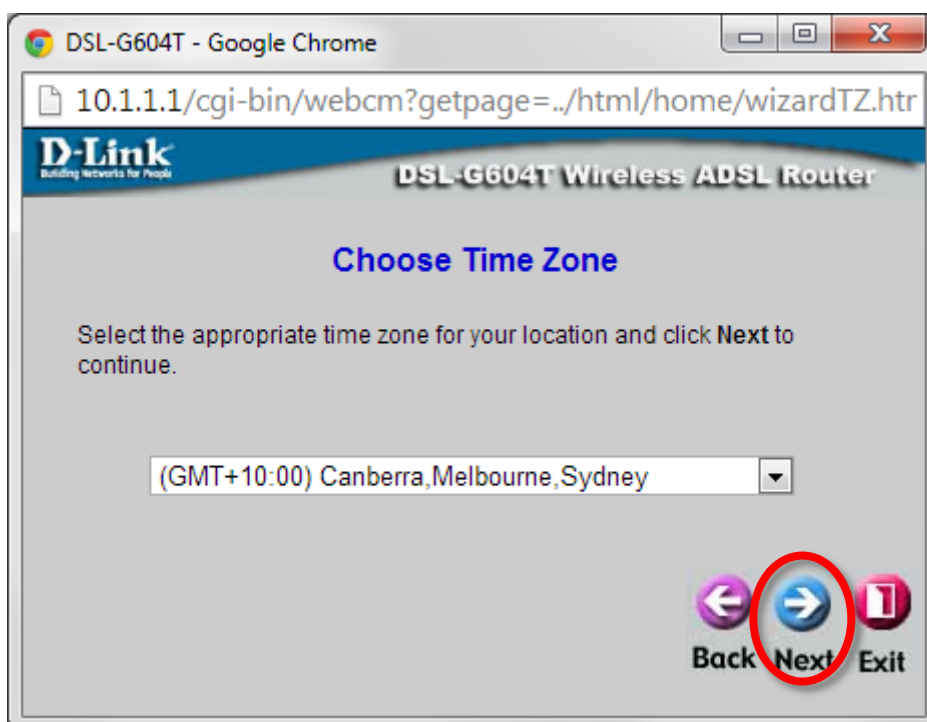
Step 3. After logging in you will be presented with the modem's configuration pages. Please click on **Home** tab and then select **Wizard**. Click on the [Run Wizard] button.



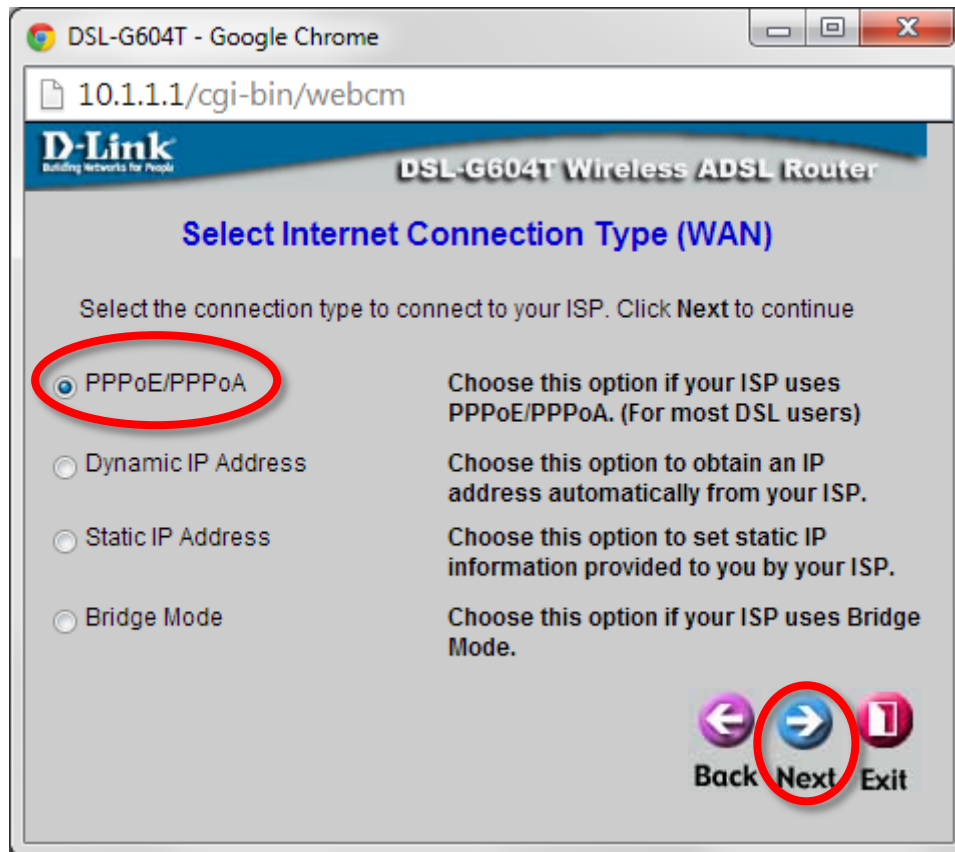
Step 4. The Setup Wizard will display the steps required to configure your modem router. Click the Next button:



Step 5. Choose your Time Zone. Click the Next button.



Step 6. Select the type of connection your Internet Provider is using. Most providers use PPPoE/PPPoA. Click on Next.



Step 7. In the Username and Password field please type in your Internet account details as given by your Internet Service Provider.

Providers in Australia typically use these settings:

VPI: 8

VCI: 35

Connection type: PPPoE LLC

Providers in New Zealand typically use these settings:

VPI: 0

VCI: 100

Connection type: PPPoA VC-Mux

DSL-G604T - Google Chrome

10.1.1.1/cgi-bin/webcm

D-Link
Building Networks for People

DSL-G604T Wireless ADSL Router

Set PPPoE / PPPoA

Enter the PPPoE/PPPoA information provided to you by your ISP. Click **Next** to continue.

User Name	<input type="text" value="username"/>
Password	<input type="password" value="...."/>
VPI	<input type="text" value="8"/>
VCI	<input type="text" value="35"/>
Connection Type	<input type="text" value="PPPoE LLC"/>

Back Next Exit

Step 8. Set the name for your wireless network in the SSID field.

For the best level of security on your wireless network select “WPA” and “WPA2”.

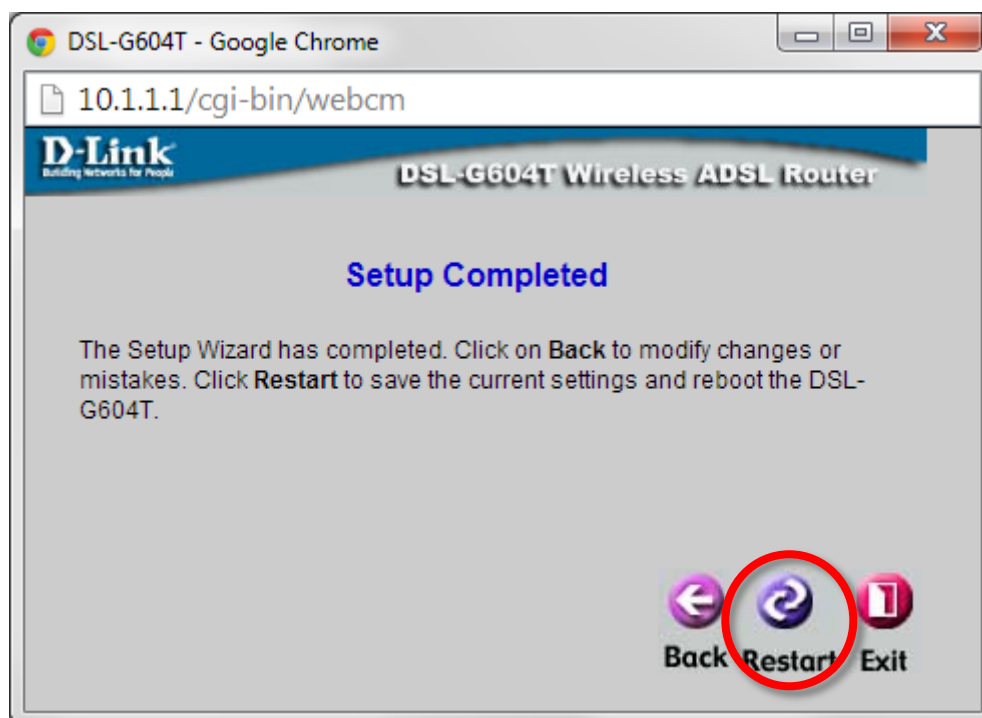
Type the password you want to use for your Wi-Fi in the “PSK String” field.

Take a note of this password as you will need to enter it into all your devices trying to connect to your Wi-Fi network for the first time.

The screenshot shows the web interface for a D-Link DSL-G604T Wireless ADSL Router. The page title is "Set Wireless LAN Connection". The interface includes the following fields and options:

- Enable AP:**
- SSID:**
- Channel:**
- Security:** None WEP WPA
- WPA WPA2 AnyWPA
- Enable WPA2 Pre-authentication
- Group Key Interval:** Seconds
- PSK String:**
- Navigation Buttons:** Back (left arrow), Next (right arrow), Exit (stop sign). The "Next" button is highlighted with a red circle.

Step 9. Click on “Restart” to complete the setup and save your new settings in the modem’s memory.



Wait 1-2 minutes for the modem to restart and apply new settings. Your modem router’s Internet and Wireless configuration is now complete.