

How to configure D-Link ADSL Router to enable TPG IPTV

This is the TPG IPTV configuration guide for the following ADSL routers:

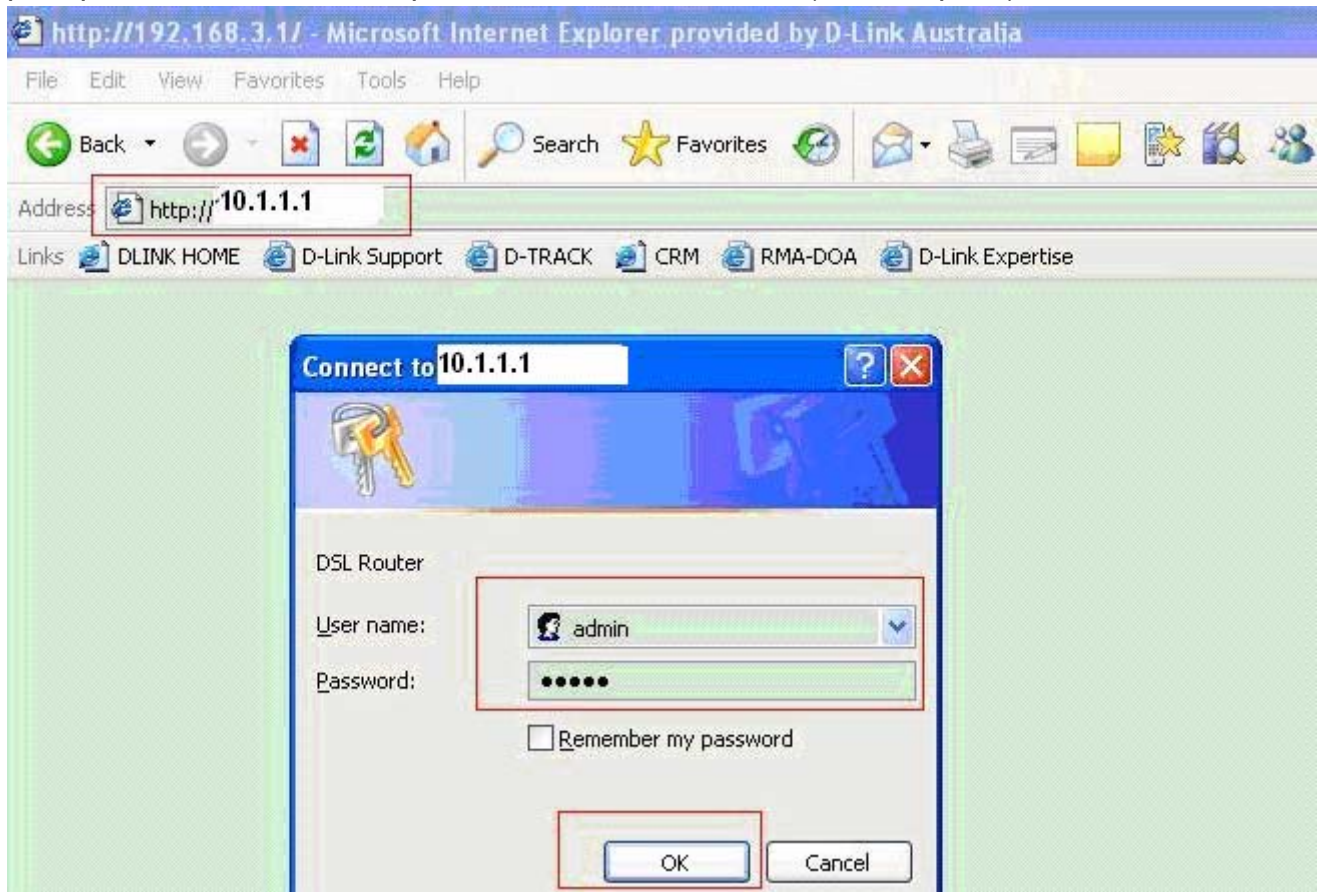
DSL-502T Gen II, DSL-504T Gen II, DSL-G604T Gen II

Before you start to configure the router, please kindly note the **limitation** of TPG IPTV.

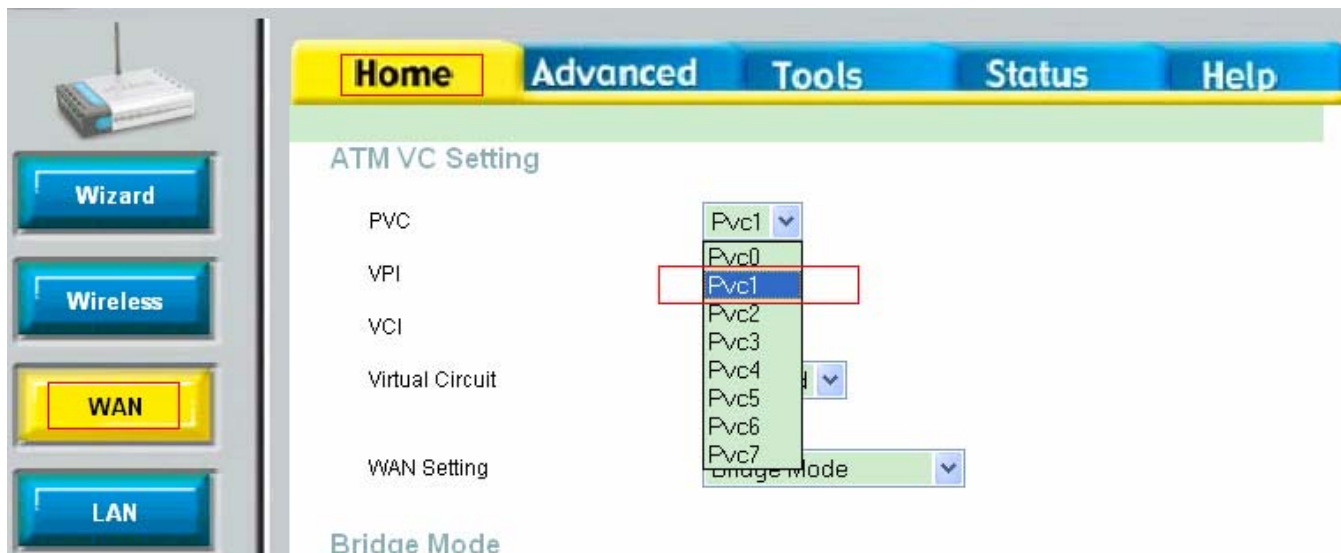
1. TPG IPTV is only available to customers who are connected to a TPG IPTV enabled exchange. To find out more, please visit the TPG IPTV website at <http://www.tpg.com.au/iptv>
2. Connection speed decreases the further you are located from the exchange. If the connection speed decreases to less than 3.5Mbps, then the IPTV picture will no longer be viewable.
3. The TPG IPTV service can not be transmitted via a wireless connection - if you have a modem/router with wireless capabilities you must connect directly via the Ethernet port rather than a wireless connection.

Configuration Instructions for DSL-502T GII, DSL-504T GII and DSL-G604T GII

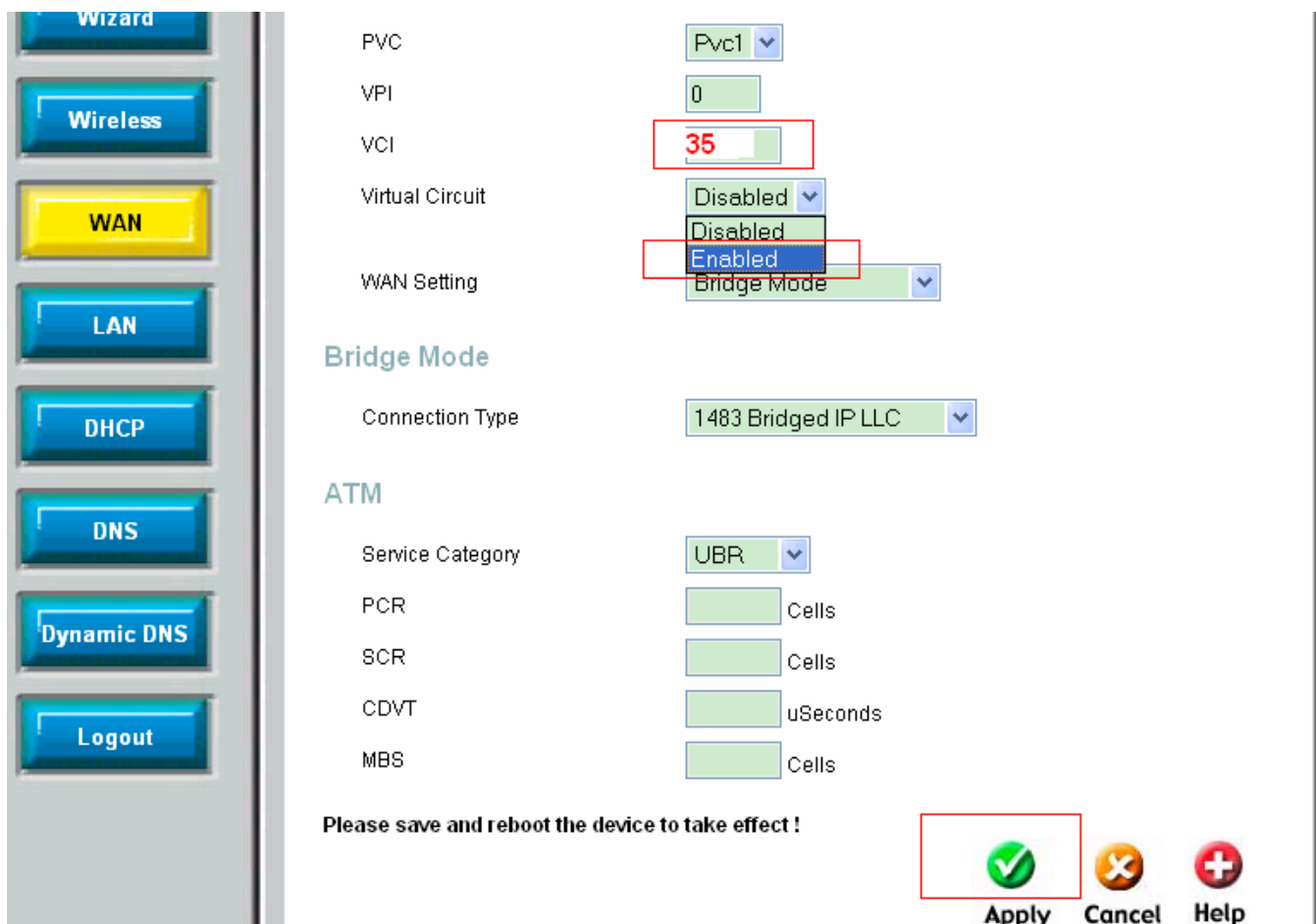
1. Type **http://10.1.1.1** in the address line of your internet browser and hit enter. You will be prompted for username and password. Both are 'admin' (without quote)



2. Go to 'HOME'>'WAN' page and select 'Pvc1'



3. Under 'Virtual Circuit' field, please select 'Enabled'. Change the VCI to 35 and click 'Apply' button.



4. Go to 'Tools'-'System' page and click 'Save and Reboot' button.



Note: When the router reboots and connects to the internet (authenticates), it will take a further 1 minute for the IPTV settings in your router to register and work