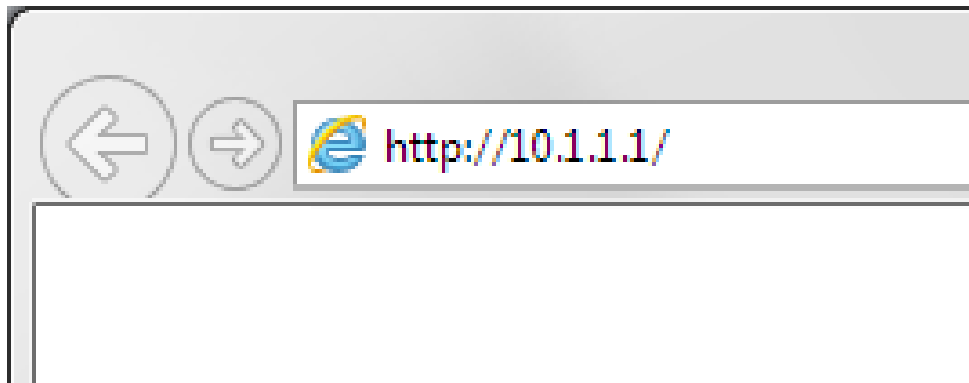


I Forgot My Wireless Security Password

This document details how to locate your Wireless Security Password

Step 1. You will need to use a computer which is connected to your modem router via a network cable. Or a device that is already connected to your router's Wi-Fi network with pre-saved password.

Open your Internet browser e.g. Internet Explorer, Firefox, Chrome, Safari, etc. and enter the IP address of your D-Link modem in the **address bar**: `http://10.1.1.1`



Step 2. When prompted type in the Username and Password, then click on the "OK" button.
If you have not changed the password for the modem administration, the factory settings are:

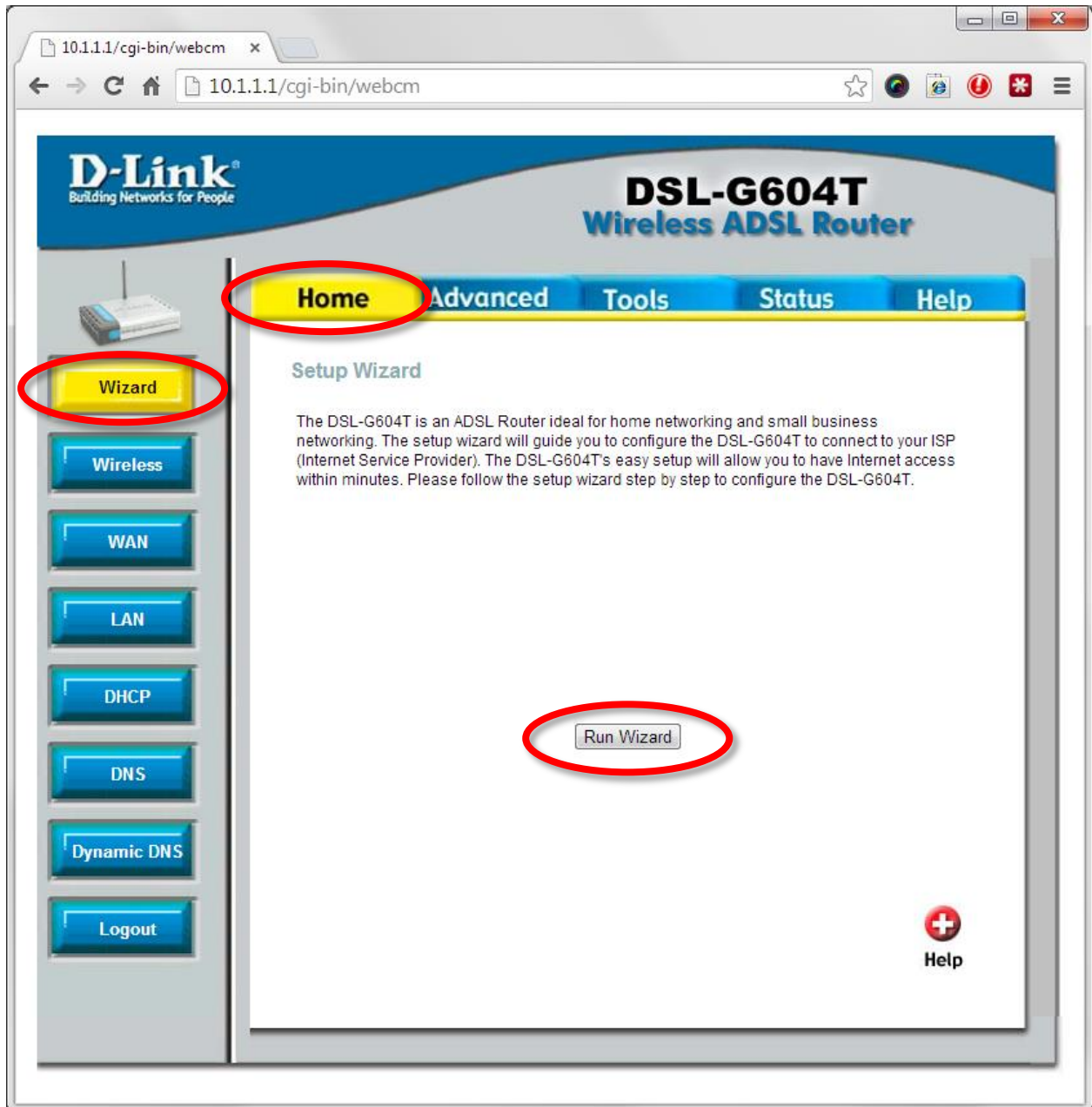
Username: admin

Password: admin

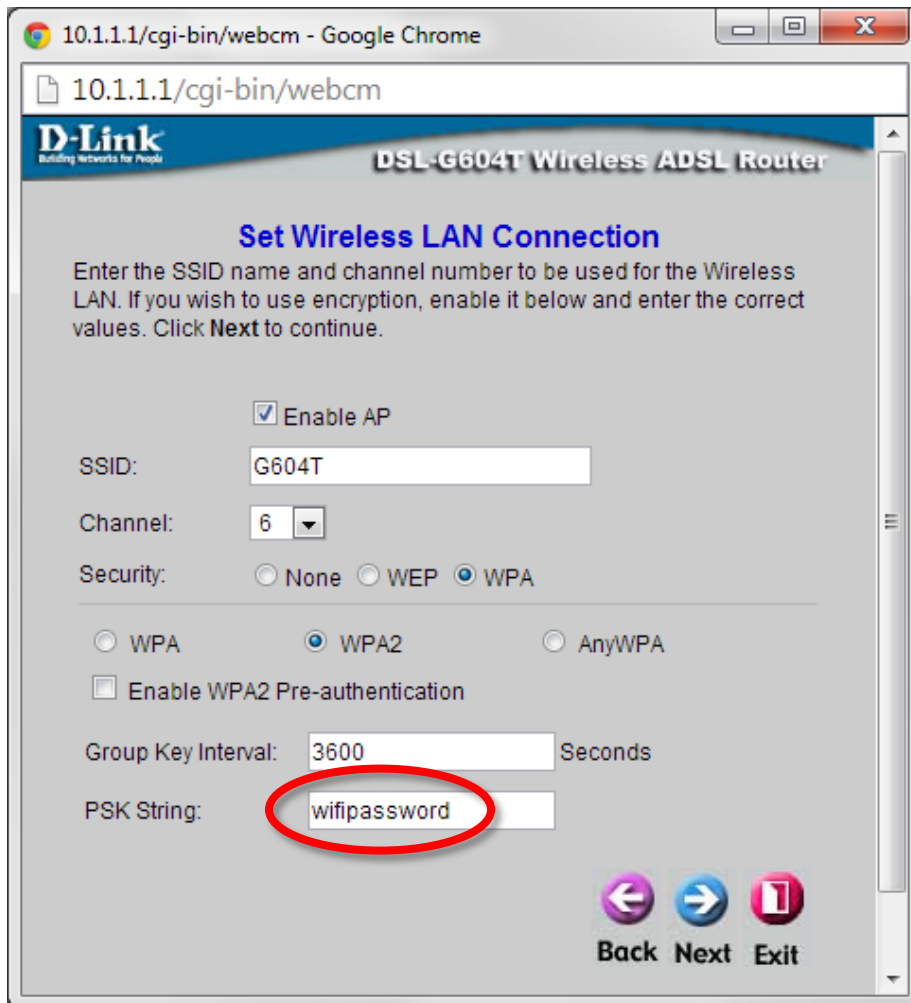
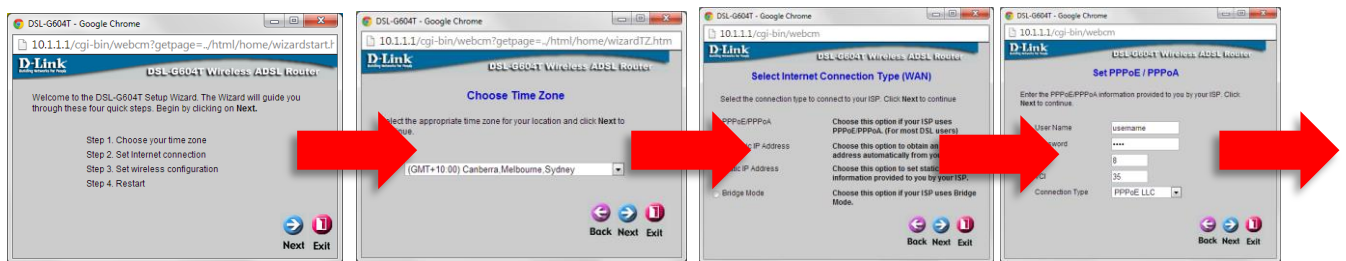


If you cannot recall the password you assigned to your modem you will need to reset the modem to factory defaults by pressing the reset button for 10 seconds. Please note that this will revert all the settings in the modem to factory settings and you will have to reconfigure it with your Internet settings and Wireless security. Make sure you have your Internet account details (given by your Internet Provider) handy.

Step 3. After logging in you will be presented with the modem's configuration pages. Please click on **Home** tab and then select **Wizard**. Click on the [Run Wizard] button.



Step 4. You do not have to change any parameters in the Wizard, you just need to get to the page where your current Wi-Fi password is displayed. Continue clicking on “Next” until you get to the “Set Wireless LAN Connection” window.



Your current Wi-Fi password will be displayed in the “PSK String” field.

Use this password to connect devices to your router’s wireless network. Please take note of the name of your wireless network in the “SSID” field. Make sure you are trying to connect to the right Wi-Fi network.

Step 5. Click on “Exit” to close the Wizard window without changing any settings in the modem router. Select OK to confirm.

