



D-Link[®]

7-PORT HI-SPEED USB HUB
DUB-H7

QUICK INSTALLATION GUIDE

РУКОВОДСТВО ПО БЫСТРОЙ УСТАНОВКЕ

GUÍA DE INSTALACIÓN RÁPIDA

GUIA DE INSTALAÇÃO RÁPIDA

快速安裝指南

PETUNJUK PEMASANGAN CEPAT

CONTENTS OF PACKAGING

CONTENTS



**7-PORT HI-SPEED USB HUB
DUB-H7**



POWER ADAPTER



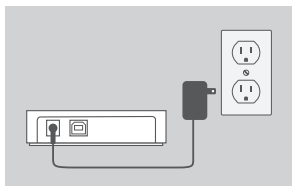
USB 2.0 CABLE



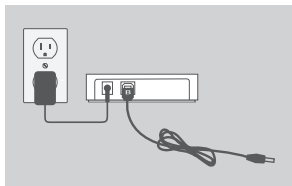
If any of these items are missing from your packaging, contact your reseller.

PRODUCT SETUP

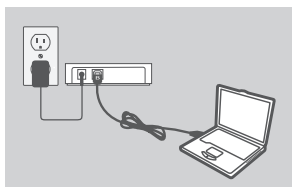
QUICK INSTALLATION



1. Plug the power adapter into the receptor located on the back panel of the DUB-H7. Plug the other end into a power strip or wall outlet.



2. Plug the USB type B connector (the square end of the supplied USB cable) into the back of the DUB-H7.



3. Plug the USB type A connector (the flat end of the supplied USB cable) into an available USB port on your computer.

4. Your computer will automatically detect and install the drivers for the DUB-H7. You may now connect USB 2.0 or USB 1.1 devices to an available USB port on the front of the DUB-H7. The two black USB ports provide additional power for fast-charging an iPad® or similar product when the LED is green (Fast-Charge Mode).

FAST-CHARGE MODE

CHANGING FROM STANDARD MODE TO FAST-CHARGE MODE

The DUB-H7 has two black Fast-Charge USB ports. Connect the power adapter to the hub to enable Fast-Charge Mode for these ports. Fast-Charge Mode will be indicated by a green LED. Standard HUB mode will be indicated by a blue LED.

For Apple iPad®:

- If the USB cable is connected to the hub, install the iPad_Charge.exe program onto your computer to allow charging for up to two iPads® via the Fast-Charge ports. If a single iPad® is connected, it will receive max. 2.1A charging current. If two iPads® are connected, each will receive max. 1.2A charging current.
- If no USB cable is connected or the computer connected to the USB port on the hub is in sleep/hibernate mode, you will not need to install the software to allow Fast-Charge.

For Android and other devices:

- If the USB cable is connected to the hub, all ports will receive max. 500mA charging current.
- If no USB cable is connected or the computer connected to the USB port on the hub is in sleep/hibernate mode, the Fast-Charge ports will provide a total of max. 3A charging current.

Notes:

1. We suggest the total combined power draw of 7 ports does not exceed 12W or 2.4A.
2. The actual charge capacity provided is dependent on attached device needs.
3. The iPad_Charge.exe program is only available for Windows OS.

iPad® SYNC

CHARGING AND SYNCING YOUR iPad® AT THE SAME TIME

- If you want to charge and sync your iPad® simultaneously when it is connected via the DUB-H7 to a Windows computer, go to the Product Support page for the DUB-H7 on www.dlink.com and download the iPad_Charge.exe program onto your computer. Once you've installed this program, you'll be able to sync and charge your iPad® simultaneously.

Note: iPad® is a registered trademark of Apple Inc.

TROUBLESHOOTING

SETUP AND CONFIGURATION PROBLEMS

1. WHAT DO I DO IF MY COMPUTER DOES NOT DETECT MY DUB-H7?

Check and ensure that all cables and the power adapter are connected securely. Check that the connecting USB port on your computer is functioning correctly. If not, try connecting via an alternative USB port on your computer.

2. WHAT DO I DO IF I GET A "USB HUB CURRENT LIMIT EXCEEDED" MESSAGE IN MICROSOFT WINDOWS?

If a port becomes overloaded, this message will appear on the computer monitor. Reset the DUB-H7 by pulling out the hub-to-computer USB cable and the power adapter for 5 seconds before powering it back on.

3. HOW CAN I USE FAST-CHARGE MODE WHEN MY PC IS IN HIBERNATE MODE?

Some PCs don't support fast-charging in hibernate mode, because they don't switch off their USB ports when they go into hibernate mode. To check if your PC does support it, connect the DUB-H7 to the PC before putting the PC in hibernate mode. If the DUB-H7's LED doesn't turn green when the PC goes into hibernate mode, your PC doesn't support Fast-Charge Mode while hibernating. If this is the case, simply disconnect the DUB-H7 from the PC to activate Fast-Charge Mode.

4. WHAT DO I DO IF MY DUB-H7 DOESN'T AUTOMATICALLY GO INTO FAST-CHARGE MODE WHEN MY PC SHUTS DOWN?

Go into the PC's BIOS setup and disable the "Keyboard/Mouse Boot" option. Please note that some PCs do not support automatic mode change when they shut down. If that is the case with your PC, simply disconnect the DUB-H7 from your computer to let your DUB-H7 go into Fast-Charge Mode.

5. WHAT DO I DO IF MY IPAD®, OR SIMILAR DEVICE, DOES NOT CHARGE?

Make sure the DUB-H7 is in Fast-Charge Mode (green LED), and make sure the device is plugged into one of the black ports.

TECHNICAL SUPPORT

You can find software updates and user documentation on the D-Link website.

Tech Support for customers in

Australia:

Tel: 1300-766-868
24/7 Technical Support
Web: <http://www.dlink.com.au>
E-mail: support@dlink.com.au

India:

Tel: +91-22-27626600
Toll Free 1800-22-8998
Web: www.dlink.co.in
E-Mail: helpdesk@dlink.co.in

Singapore, Thailand, Indonesia, Malaysia, Philippines, Vietnam:

Singapore - www.dlink.com.sg
Thailand - www.dlink.co.th
Indonesia - www.dlink.co.id
Malaysia - www.dlink.com.my
Philippines - www.dlink.com.ph
Vietnam - www.dlink.com.vn

Korea:

Tel : +82-2-2028-1810
Monday to Friday 9:00am to 6:00pm
Web : <http://d-link.co.kr>
E-mail : g2b@d-link.co.kr

New Zealand:

Tel: 0800-900-900
24/7 Technical Support
Web: <http://www.dlink.co.nz>
E-mail: support@dlink.co.nz

South Africa and Sub Sahara Region:

Tel: +27 12 661 2025
08600 DLINK (for South Africa only)
Monday to Friday 8:30am to 9:00pm South Africa Time
Web: <http://www.d-link.co.za>
E-mail: support@d-link.co.za

Saudi Arabia (KSA):

Tel: +966 01 217 0008
Fax: +966 01 217 0009
Saturday to Wednesday 9.30AM to 6.30PM
Thursdays 9.30AM to 2.00 PM
E-mail: Support.sa@dlink-me.com

D-Link Middle East - Dubai, U.A.E.

Plot No. S31102,
Jebel Ali Free Zone South,
P.O.Box 18224, Dubai, U.A.E.
Tel: +971-4-8809022
Fax: +971-4-8809066 / 8809069
Technical Support: +971-4-8809033
General Inquiries: info.me@dlink-me.com
Tech Support: support.me@dlink-me.com

Egypt

1, Makram Ebeid Street - City Lights Building
Nasr City - Cairo, Egypt
Floor 6, office C2
Tel.: +2 02 26718375 - +2 02 26717280
Technical Support: +2 02 26738470
General Inquiries: info.eg@dlink-me.com
Tech Support: support.eg@dlink-me.com

Kingdom of Saudi Arabia

Office # 84 ,
Al Khaleej Building (Mujamathu Al-Khaleej)
Opp. King Fahd Road, Olaya
Riyadh - Saudi Arabia
Tel: +966 1 217 0008
Technical Support:
+966 1 2170009 / +966 2 6522951
General Inquiries: info.sa@dlink-me.com
Tech Support: support.sa@dlink-me.com

Pakistan

Islamabad Office:
61-A, Jinnah Avenue, Blue Area,
Suite # 11, EBC, Saudi Pak Tower,
Islamabad - Pakistan
Tel.: +92-51-2800397, 2800398
Fax: +92-51-2800399

Karachi Office:

D-147/1, KDA Scheme # 1,
Opposite Mudassir Park, Karsaz Road,
Karachi – Pakistan
Phone: +92-21-34548158, 34326649
Fax: +92-21-4375727
Technical Support: +92-21-34548310, 34305069
General Inquiries: info.pk@dlink-me.com
Tech Support: support.pk@dlink-me.com

TECHNICAL SUPPORT

Iran

Unit 5, 5th Floor, No. 20, 17th Alley , Bokharest
St. , Argentine Sq. ,
Tehran IRAN
Postal Code : 1513833817
Tel: +98-21-88880918,19
+98-21-88706653,54
General Inquiries: info.ir@dlink-me.com
Tech Support: support.ir@dlink-me.com

Morocco

M.I.T.C
Route de Nouaceur angle RS et CT 1029
Bureau N° 312 ET 337
Casablanca , Maroc
Phone : +212 663 72 73 24
Email: support.na@dlink-me.com

Lebanon RMA center

Dbayeh/Lebanon
PO Box:901589
Tel: +961 4 54 49 71 Ext:14
Fax: +961 4 54 49 71 Ext:12
Email: taoun@dlink-me.com

Bahrain

Technical Support: +973 1 3332904

Kuwait:

Technical Support: + 965 22453939 / +965
22453949

Türkiye Merkez İrtibat Ofisi

Ayazağa Maslak yolu
Erdebil Cevahir İş Merkezi No: 5/A Ayazağa /
Maslak İstanbul
Tel: +90 212 2895659
Ücretsiz Müşteri Destek Hattı: 0 800 211 00 65
Web:www.dlink.com.tr
Teknik Destek: support.tr@dlink.com.tr

ISRAEL

מטלון סנטר
רח' המגשימים 20
קרית מטלון, פ"ת 49348
ת.ד. 7060
טלפון: 073-796-2797
אי-מאייל כללי: info@dlink.co.il
אי-מאייל תמיכה: support@dlink.co.il

