



**Software Version:** 6.00.03B07  
(SP3 B07)  
**Supported Products:** DV-600P  
DV-600S  
**Published:** June 29, 2012

These release notes include important information about D-Link D-View 6.0 Service Pack 3. Please verify that these release notes are correct for your product:

- If you plan to upgrade or install this new software release, please read [System Requirements](#) first to ensure the system fulfill the requirements and refer to the [Installation and Upgrade Instructions](#) for the correct upgrade procedures
- For detailed service pack version and support information, please refer to [Revision History](#)

Related Documentation and information:

- For more detailed information regarding this product, please refer to [Related Documentation](#)
- For latest version of any documentation, please visit D-View Web site at <http://dview.dlink.com.tw> and click on **Support > Download Document**
- You can also download the latest software version and associated D-View Modules on D-View Web site (<http://dview.dlink.com.tw>).

### Content:

Revision History .....	2
System Requirements .....	2
Installation and Upgrade Instructions .....	4
Feature Improvement .....	6
Problem Fixed .....	6
Known Issues.....	8
Related Documentation .....	8

## Revision History

Version	Description	Supported Edition	Release Date
6.00.03B07	D-View 6.0 Service Pack 3	D-View 6 Standard Edition (DV-600S) D-View 6 Professional Edition (DV-600P)	2012/06/29
6.00.02B35	D-View 6.0 Service Pack 2	D-View 6 Standard Edition (DV-600S) D-View 6 Professional Edition (DV-600P)	2011/07/30
6.00.02B16		D-View 6 Standard Edition (DV-600S) D-View 6 Professional Edition (DV-600P)	2011/03/31
6.0.01B03	D-View 6.0 Service Pack 1	D-View 6 Standard Edition (DV-600S) D-View 6 Professional Edition (DV-600P)	2009/09/09
096.090.117	D-View 6.0	D-View 6 Professional Edition (DV-600P)	2008/04/11
096.091.098		D-View 6 Standard Edition (DV-600S)	2008/04/11

## System Requirements

### For Upgrade Patches

Version	Prerequisite Software
6.00.03B07	<ul style="list-style-type: none"> <li>● D-View 6 SP2 (6.0.02B35 or above)</li> <li>● Microsoft .NET Framework 3.5</li> <li>● Microsoft Report Viewer 2008 Redistributable Package</li> <li>● Windows SNMP Service</li> </ul>
6.00.02B35	<ul style="list-style-type: none"> <li>● D-View 6 SP1 (6.0.01B03 or above)</li> <li>● Microsoft .NET Framework 3.5</li> </ul>
6.00.02B16	<ul style="list-style-type: none"> <li>● Microsoft Report Viewer 2008 Redistributable Package</li> <li>● Windows SNMP Service</li> </ul>
6.0.01B03	<ul style="list-style-type: none"> <li>● D-View 6 (0.96.091.098 for standard edition / 096.090.117 for professional or above)</li> <li>● Microsoft XML Parser and SDK</li> </ul>

**For Full Installation Package**

	Standard Edition	Professional Edition
<b>CPU</b>	2GHz or above	
<b>Memory</b>	1GB or above	
<b>Disk Space</b>	tr1GB or above	
<b>Supported Operating System</b>	<ul style="list-style-type: none"> <li>● Microsoft Windows 2008 R2 with SP1</li> <li>● Microsoft Windows 2003 with SP2</li> <li>● Microsoft Windows 2000 Server with SP4</li> <li>● Microsoft Windows 2000 Advanced Server with SP4</li> <li>● Microsoft Windows 7 Enterprise (32 bits)</li> <li>● Microsoft Windows Vista (32 bits)</li> <li>● Microsoft Windows XP (32bits) Home/Professional with SP2</li> </ul>	<ul style="list-style-type: none"> <li>● Microsoft Windows 2008 R2 with SP1</li> <li>● Microsoft Windows 2003 with SP2</li> <li>● Microsoft Windows 2000 Server with SP4</li> <li>● Microsoft Windows 2000 Advanced Server with SP4</li> </ul>
<b>Supported Databases</b>	<ul style="list-style-type: none"> <li>● Microsoft SQL Server 2000 with SP2</li> <li>● Microsoft SQL Server 2005</li> </ul>	<ul style="list-style-type: none"> <li>● None</li> </ul>
<b>Prerequisite Software</b>	<ul style="list-style-type: none"> <li>● D-Link D-View 6 with SP2 (6.0.02B35)</li> <li>● Microsoft .NET Framework 3.5</li> <li>● Microsoft Report Viewer 2008 Redistributable Package</li> <li>● Windows SNMP Service</li> </ul>	

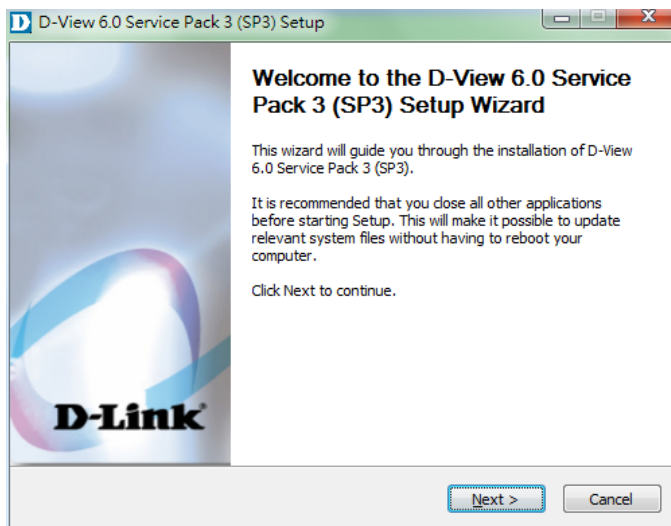
## Installation and Upgrade Instructions

### For Full installation Package

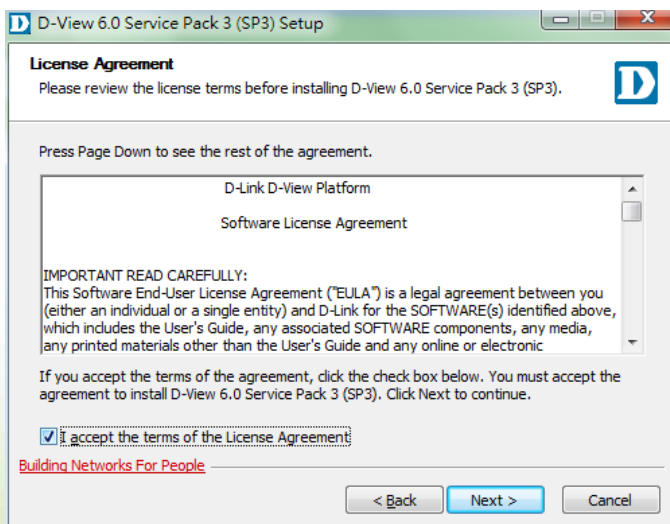
1. Please refer the user manual for detailed information

### For Upgrade Package

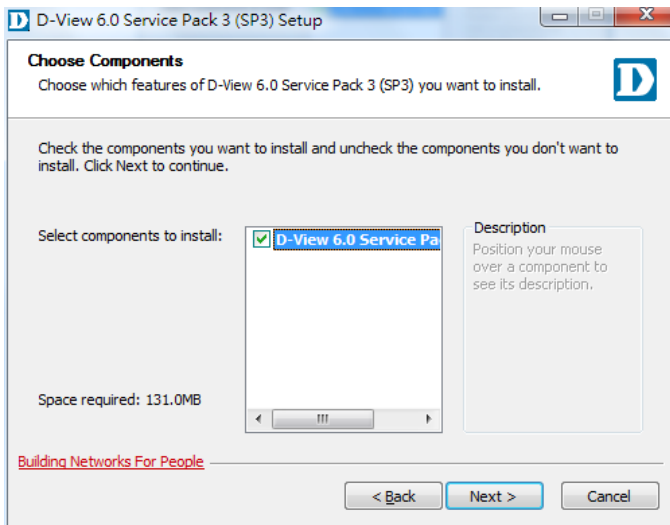
1. Check the version of D-View by click **Help > About**
2. Make sure D-View 6 SP2 (6.00.02B35 or above) have been installed in your system
3. Make sure Microsoft .NET Framework 3.5 have been installed in your system
4. Make sure Microsoft Report Viewer 2008 Redistributable Package have been installed in your system (Note: D-View 6 SP3 do not support Microsoft Report Viewer 2008)
5. Make sure Windows SNMP service have been installed in your system
6. Double click D-View SP3 upgrade patch and click **Next** to continue



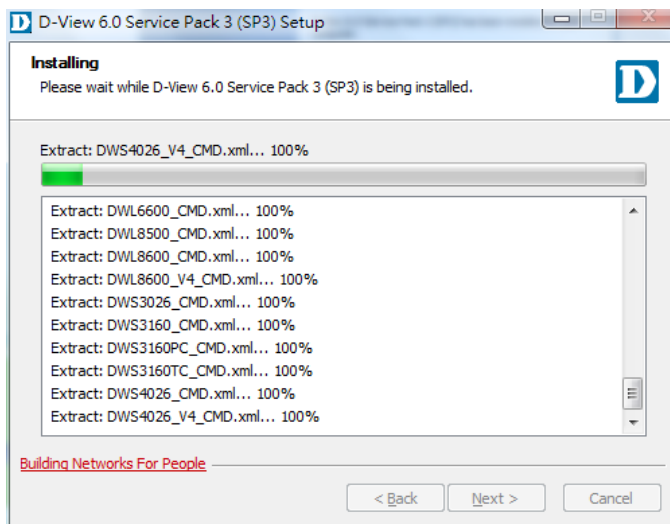
7. Check "I accept the terms of the License Agreement" and click **Next** to continue



8. Click **Next** to continue



9. Wait until the installation process complete



10. Click **Finish** to finish the upgrade process



## Feature Improvement

Version	New Features
6.00.03B07	<ol style="list-style-type: none"> <li>Added WCM (Wireless Control Module) into this service pack it do not need to install WCM separately</li> <li>Added refresh time setting in &lt;Topology Generator&gt;</li> <li>Added timeout interval settings of SSH protocol in &lt;Net Tools / Net Toolbox / Device Configure&gt; <b>(DLA20120229000007)</b></li> <li>Add the trap messages parsing for macChangeNotification of DES-7210 <b>(DLA20111019000001)</b></li> <li>Supported single net map export in &lt;Topology Generator&gt;</li> <li>Supported DWS-4026, DHS-3628F in &lt;Run Batch&gt; module</li> </ol>
6.00.02B35	<ol style="list-style-type: none"> <li>Added &lt;Reset Polling Status&gt; to recheck the status of all devices</li> <li>Supported multiple network interfaces. When more than one network interfaces exist in the system, user can select the network interface they want to use</li> <li>Supported management access point display on topology</li> <li>Supported &lt;Device Name&gt; display on topology</li> <li>Supported auto-run and auto-login to D-View after system reboot</li> </ol>
6.00.02B16	<ol style="list-style-type: none"> <li>Added network device collector to collect CPU/memory/port data</li> <li>Added Reporting Tool which can generate report</li> <li>Added Script Tool which can deploy the configuration file to multiple devices</li> <li>Added Batch Configuration and Scheduled Batch Configuration</li> <li>Added L3 Topology Discovery</li> <li>Added Advanced Device Discovery to support periodical device discovery in background</li> <li>Added Inventory Management</li> <li>Made link color in Topology changeable</li> <li>Made Trap Notification configurable by port</li> <li>Supported Windows XP, Windows Vista, and Windows 7</li> <li>Supported multiple mail addresses to receive the alerts and notifications</li> <li>Supported mesh, circle type in Topology Map</li> <li>Supported multiple community names for SNMP communication</li> <li>Supported more detailed control for D-View logon user privileges</li> <li>Supported Stacking port's input format (1:1) to make it easily understood</li> <li>Supported Chinese characters in domain tree</li> <li>Supported more D-Link devices</li> </ol>
6.00.01B03	First release, please refer to user manual for detail supported features

## Problem Fixed

Version	Problems Fixed
6.00.03B07	<ol style="list-style-type: none"> <li>&lt;Report / Device Inventory&gt; incorrectly displays duplicate devices if these devices exist both in L2 and L3 netmap <b>(DLA20111026000002)</b></li> <li>The collectors list in &lt;Report&gt; do not refresh when the collector has been deleted <b>(DLA20111020000003)</b></li> <li>D-View displays wrong DVisionDBCom error pop-up message when D-View received special strings in syslog <b>(DI20111110000008)</b></li> <li>&lt;Run Batch / Firmware Update&gt; feature always failed for DWS-4026 <b>(DEUR20111112000002)</b></li> <li>The devices image will disappear when print the topology map to xps or pdf. <b>(DEUR20111112000002)</b></li> <li>The firmware upgrade function cannot work if the remote TFTP server IP</li> </ol>

	<p>address is not belonged to D-View <b>(DLA20111026000002)</b></p> <ol style="list-style-type: none"> <li>7. &lt;Run Batch&gt; cannot save config through correctly for DGS-3627 and DGS-3650 <b>(DLA20111201000001)</b></li> <li>8. It cannot delete the key in &lt;Device Event Config&gt; <b>(DI20111212000002)</b></li> <li>9. It cannot select Alarm or Warning as the severity in &lt;Device Event Config&gt; <b>(DI20111212000002)</b></li> <li>10. It will incorrectly show some switches twice in &lt;Report-Device Inventory&gt; <b>(DI20120207000002)</b></li> <li>11. When change the user privileges in a group under &lt;System / Administrator Manager&gt;, it will affect the privileges of other users of the same group <b>(DI20120207000002)</b></li> <li>12. D-View will crash when editing the information of Cisco 6506E device <b>(DI20120217000004)</b></li> <li>13. It will show incorrect values in CPU utilization of DGS-3100 in &lt;Report&gt; <b>(DI20120207000002)</b></li> <li>14. The &lt;Device Discovery&gt; feature will cause D-View crashed occasionally <b>(DLA20120229000007)</b></li> <li>15. The TFTP Server cannot be launched when use schedule function under &lt;Run Batch&gt; <b>(DLA20120229000007)</b></li> <li>16. It cannot get serial number of DGS-3100 <b>(DLA20120229000007)</b></li> <li>17. The firmware backup operation will be failed when target devices are DES-3526/50 series and DES-3028/52 series <b>(DLA20120229000007)</b></li> <li>18. D-View displays incorrect "Timeout" message when &lt;Run Batch / Reboot&gt; DGS-3600, DGS-3528, and DGS-3552, even the reboot is correctly executed. <b>(DLA20120229000007)</b></li> <li>19. The save configuration feature for DGS-3600 series cannot work normally because the OID is incorrect. <b>(DLA20120229000007)</b></li> <li>20. The &lt;Run Batch&gt; module cannot work correctly in reboot and firmware upgrade operations for DGS-3600. <b>(DLA20120229000007)</b></li> <li>21. &lt;Run Batch / Spanning Tree&gt; will show incorrect timeout message for DHS-3628F <b>(DLA20120229000007)</b></li> <li>22. The &lt;Run Batch / Check Configuration&gt; will timeout when execute this feature to some legacy devices like DGS-3612G <b>(DLA20120229000007)</b></li> <li>23. It cannot display devices image when print the topology map to file.xps or file.pdf <b>(DLA20120308000003)</b></li> <li>24. When there are multiple accounts in the windows system, different account will see different devices and topology map. <b>(DLA20120308000003)</b></li> <li>25. When user have set the account and password for &lt;System / System Config / auto-run D-View after logon windows&gt; and disabled it, user can still use "DViewNMS /autorun" command to launch the D-View without inputting account and password <b>(DI20120419000004)</b></li> </ol>
6.00.02B35	<ol style="list-style-type: none"> <li>1. E2ES module cannot be installed to 6.00.02B16</li> <li>2. Firmware upgrade may fail while firmware is too big</li> <li>3. D-View cannot discovery the devices in &lt;Topology Generator&gt; when the SNMP community is not "public" <b>(DRU20110411000002)</b></li> <li>4. D-View still displays &lt;E2ES Activation Wizard&gt; when install free E2ES Lite <b>(DI20110406000006)</b></li> <li>5. The performance monitor shows 332 ports for DGS-3100 series devices <b>(DI20110427000005)</b></li> </ol>
6.00.02B16	<ol style="list-style-type: none"> <li>1. No warning message when installing D-View on an OS not supported.</li> <li>2. The application may crash while closing User Locator dialog box</li> <li>3. System shows the wrong error messages "can't connect database" while opening file dialog</li> <li>4. Chinese characters are displayed as scrambled code</li> <li>5. The topology tree displays "1" instead of "root" when logon by another Windows account that is not the one who installed D-View</li> </ol>

6.00.01B03 First release

\* D-Link tracking number is enclosed in ()

### Known Issues

Version	Issues	Work Around
6.00.03B07	1. DWS-4206 can be fully supported in D-View/Run Batch function except for "RMON" and "Safeguard", because there aren't their OID	1. It need to use GUI or CLI to manipulate these features
6.00.02B35	None	None
6.00.02B16	1. E2ES management module cannot be installed under this version	1. E2ES management module needs to be installed before upgrading to D-View 6 SP2
	2. Report feature is malfunction	2. Upgrade to 6.00.02B35
6.00.00B03	First release	

### Related Documentation

- D-View 6.0 User Manual v2.0