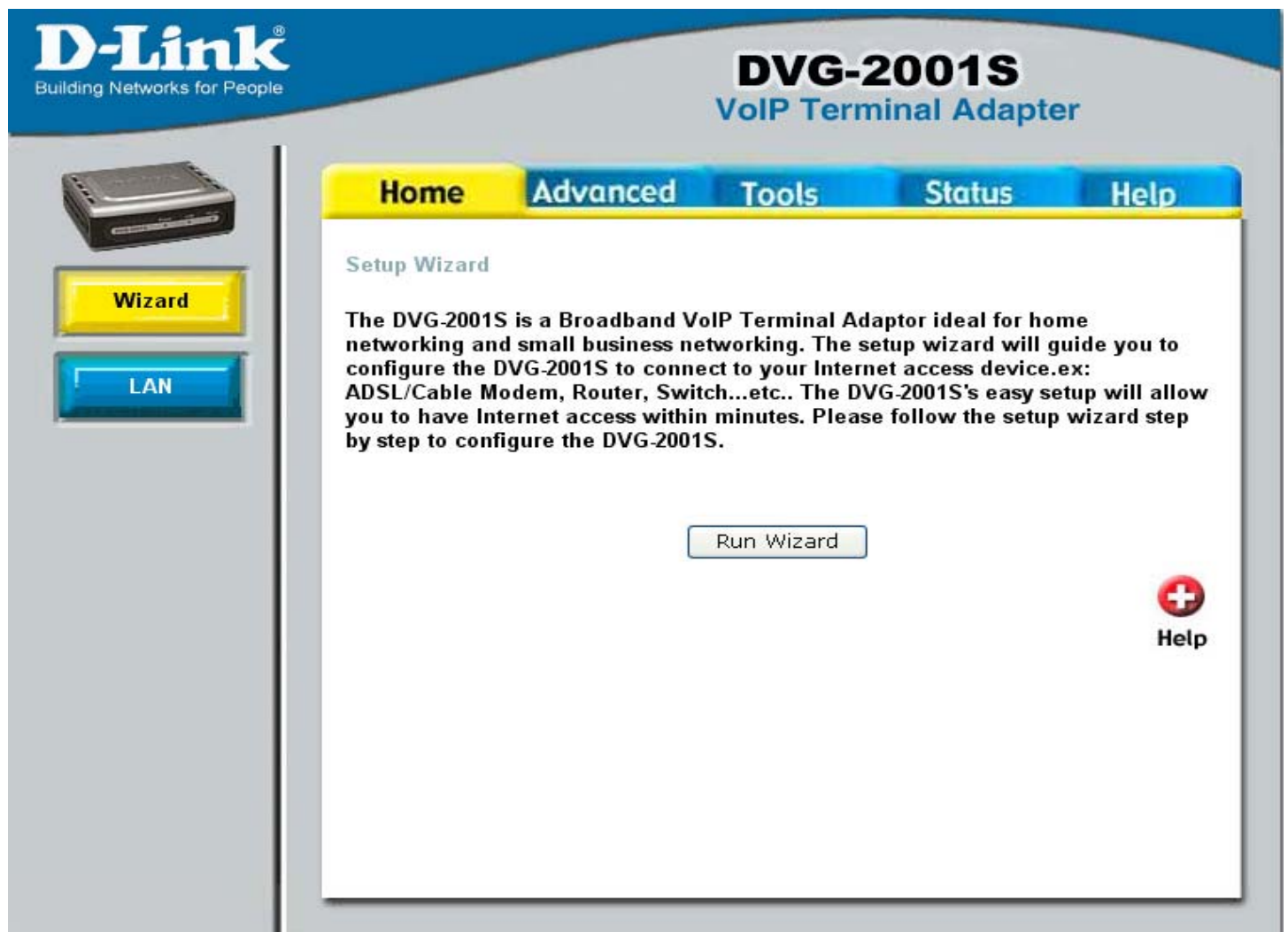


The default IP address of the DVG-2001S is 10.1.1.1



http://10.1.1.1/html/Wizard\_Password.html?4369,0,0,0,0,0,0,0...

**D-Link**  
Building Networks for People

## DVG-2001S Setup Wizard

### Set Password

You may change the **admin** account password by entering in a new password. Click **Next** to continue.

Password

Verify Password

Back Next Exit

javascript:onClickNext() Internet

http://10.1.1.1/html/Wizard\_Static.html?4370,0,0,0,0,0,0,0 - ...

**D-Link**  
Building Networks for People

## DVG-2001S Setup Wizard

### Select Internet Connection Type (LAN)

Select the connection type to connect to your internet access device. Click **Next** to continue.

☐ Dynamic IP Address  
Choose this option to obtain an IP address automatically from your Internet access device.(For most Cable modem users)

☒ Static IP Address  
Choose this option to set static IP information provided to you by your Internet access device.

☐ PPPoE  
Choose this option if your Internet access device uses PPPoE.(For most DSL users)

Back Next Exit

Done Internet

http://10.1.1.1/html/Wizard\_IpAddr.html?4361,0,0,0,0,0,0,0,0 ...

**D-Link**  
Building Networks for People


## DVG-2001S Setup Wizard

### Set Static IP Address

Enter in the static IP information provided to you by your internet access device. Click **Next** to continue.

LAN IP Address	10	1	1	1
LAN Subnet Mask	255	0	0	0
LAN Gateway Address	10	1	1	254
Primary DNS Address	0	0	0	0
Secondary DNS Address	0	0	0	0

(optional)

**Back Next Exit**

javascript:onClickNext() Internet




http://10.1.1.1/html/Wizard\_Finish\_Static.html?5121,0,0,0,0,0,...

**D-Link**  
Building Networks for People

## DVG-2001S Setup Wizard

### Setup Completed

The Setup Wizard has completed. Click on **Back** to modify changes or mistakes. Click **Restart** to save the current settings and reboot the DVG-2001S

**Back Restart Exit**

Done Internet



Wizard

LAN

Home

Advanced

Tools

Status

Help

### LAN Settings

Please select the appropriate option to connect to your Internet access device.

☒ Dynamic IP Address

**Choose this option to obtain an IP address automatically from your Internet access device. (For most Cable modem users)**

☐ Static IP Address

**Choose this option to set static IP information provided to you by your Internet access device.**

☐ PPPoE

**Choose this option if your Internet access device uses PPPoE. (For most DSL users)**

### Dynamic IP

Host Name  (optional)

MAC Address  00 -  11 -  95 -  eb -  83 -  fd (optional)

Primary DNS Address  0  0  0  0

Secondary DNS Address  0  0  0  0 (optional)



Apply



Cancel



Help



Wizard

LAN

Home

Advanced

Tools

Status

Help

### LAN Settings

Please select the appropriate option to connect to your Internet access device.

☐ Dynamic IP Address

**Choose this option to obtain an IP address automatically from your Internet access device.(For most Cable modem users)**

☒ Static IP Address

**Choose this option to set static IP information provided to you by your Internet access device.**

☐ PPPoE

**Choose this option if your Internet access device uses PPPoE.(For most DSL users)**

### Static IP

IP Address

10 . 1 . 1 . 1

(assigned by your Internet access device)

Subnet Mask

255 . 0 . 0 . 0

Default Gateway

10 . 1 . 1 . 254

Primary DNS Address

0 . 0 . 0 . 0

Secondary DNS Address

0 . 0 . 0 . 0

(optional)



Apply



Cancel



Help



Wizard

LAN

Home

Advanced

Tools

Status

Help

### LAN Settings

Please select the appropriate option to connect to your Internet access device.

☐ Dynamic IP Address

**Choose this option to obtain an IP address automatically from your Internet access device.(For most Cable modem users)**

☐ Static IP Address

**Choose this option to set static IP information provided to you by your Internet access device.**

☒ PPPoE

**Choose this option if your Internet access device uses PPPoE.(For most DSL users)**

### PPPoE

User Name

Password

Retype Password

IP Address

10.1.1.1

Primary DNS Address

 .  .  . 

Secondary DNS Address

 .  .  . 

(optional)

Auto-reconnect

Disconnect

PPPoE Status

Disconnect

Connect

Disconnect



Apply Cancel Help





VoIP

Misc.

Home

Advanced

Tools

Status

Help

SIP Configuration:

☒ Server Configuration ☐ Provisioning ☐ STUN Configuration ☐ User Agent ☐ Peer to Peer ☐ Telephony

SIP Configuration-Server

Server FQDN

IP Address

Domain Name

Port

Outbound Proxy State

Outbound Proxy Server FQDN

Outbound Proxy IP Address

Outbound Proxy Domain Name

Outbound Proxy Port

Service Domain

URL Format

User Parameter Phone

Caller ID Delivery

Display CID

Timer T2  sec

Initial Unregister

Register Expiration  sec

Session Expires  sec

Min-SE  sec

Session Expires Refresher

Codec Priority & Packet Interval

G.711a-law   ms

G.711u-law   ms

G.729a   ms



VoIP

Misc.



VoIP

Misc.

Home

Advanced

Tools

Status

Help

SIP Configuration:

☐ Server Configuration ☒ Provisioning ☐ STUN Configuration ☐ User Agent ☐ Peer to Peer ☐ Telephony

XML Provisioning

Provisioning Function

SSL

Server URL

Proxy Address

Proxy Port Number

Authentication Key



Apply Cancel

Home

Advanced

Tools

Status

Help

SIP Configuration:

☐ Server Configuration ☐ Provisioning ☒ STUN Configuration ☐ User Agent ☐ Peer to Peer ☐ Telephony

STUN Configuration

STUN State

STUN Server IP Address

STUN Server Port

STUN ReqInterval

STUN NAT Type



Apply Cancel

Index	SIP Message socket mapped ip/port	SIP RTP socket mapped ip/port
1	0.0.0.0 : 0	0.0.0.0 : 0





VoIP

Misc.

Home

Advanced

Tools

Status

Help

SIP Configuration:

☐ Server Configuration ☐ Provisioning ☐ STUN Configuration ☒ User Agent ☐  
Peer to Peer ☐ Telephony

SIP Configuration - User Agent

Phone Number

Display Name

User Agent Port

Authentication Username

Password

Retype Password



Apply Cancel

Query Registration State

Query

Register

Unregister



VoIP

Misc.

Home

Advanced

Tools

Status

Help

SIP Configuration:

☐ Server Configuration ☐ Provisioning ☐ STUN Configuration ☐ User Agent ☒ Peer to Peer ☐ Telephony

Peer to Peer

Index 1

Phone Number

User IP Address

 @  0  0  0  0

Port

5060



Apply Cancel

SIP - Peer to Peer

Index	Phone Number	User IP Address	Port	Edit	Delete
1		@ 0.0.0.0	5060		
2		@ 0.0.0.0	5060		
3		@ 0.0.0.0	5060		
4		@ 0.0.0.0	5060		
5		@ 0.0.0.0	5060		
6		@ 0.0.0.0	5060		
7		@ 0.0.0.0	5060		
8		@ 0.0.0.0	5060		
9		@ 0.0.0.0	5060		
10		@ 0.0.0.0	5060		



VoIP

Misc.



VoIP

Misc.

Home

Advanced

Tools

Status

Help

SIP Configuration:

☐ Server Configuration ☐ Provisioning ☐ STUN Configuration ☐ User Agent ☐  
Peer to Peer ☒ Telephony

SIP Telephony

DTMF Method

Inbound

Payload Type

101

VAD

enabled



Apply Cancel

Home

Advanced

Tools

Status

Help

ToS

DSCP

000000

RTP DSCP

000000

Gain Control

Receive Gain

0 (0.5db)

Transmission Gain

0 (0.5db)



Apply Cancel



Admin

System

Firmware

Time

Reboot



Admin

System

Firmware

Time

Reboot

Home

Advanced

Tools

Status

Help

### Administrator Settings

#### Web Management

Web Port Number

80



Apply Cancel

#### Administrator (The Login Name is "admin")

Old Password

New Password

Confirm Password



Apply Cancel

Home

Advanced

Tools

Status

Help

### Backup and Restore Configuration file

Backup configuration file

Backup

Restore Configuration File

Browse...

Upload

### System Settings

Restore To Factory Default Settings

Reset to Factory Default



Help



Admin

System

Firmware

Time

Reboot



Admin

System

Firmware

Time

Reboot

Home

Advanced

Tools

Status

Help

### Firmware Update

TFTP Server Address

TFTP Server Address

Update Firmware

Firmware Update

File Name

Last Update Status



Apply



Cancel

Home

Advanced

Tools

Status

Help

### NTP Configuration

NTP Server

Time Zone

GMT Greenwich Mean Time

NTP Time(h:m:s,m/d/y) Time Not Ready



Apply



Cancel

[Home](#)[Advanced](#)[Tools](#)[Status](#)[Help](#)

#### Restart Device

Reboot the **DVG-2001S**

[Reboot](#)[Reboot](#)[Device Info](#)[Stats](#)[Diagnostics](#)[Home](#)[Advanced](#)[Tools](#)[Status](#)[Help](#)

#### Device Information

Device Type	VoIP TA
MAC Address	00:11:95:eb:83:fd
Boot PROM Version	D1.1B03
Firmware Version	1.00.003AUS
DSP Version	1.36.16

#### LAN

IP Address	10.1.1.1
Subnet Mask	255.0.0.0
Default Gateway	10.1.1.254

[Help](#)





Stats



Device Info

Stats

Diagnostics

Home

Advanced

Tools

Status

Help

### Traffic Statistics

Traffic Statistics display Receive and Transmit packets passing through the DVG-2001S.

Refresh

Reset

LAN	Receive	Transmit
packets	2876	packets 3390
bytes	420520	bytes 1789571
NonUcastPackets	0	NonUcastPackets 233
DiscardPackets	0	DiscardPackets 0
FrameTooLong	0	HeartbeatErrors 0
NonAlignedErrors	0	LateCollision 0
CollisionErrors	0	RetransmissionLimit 0
ShortFrames	0	UnderrunPackets 0
CRCErrors	0	CarrierSenseLost 0
OverrunPackets	0	

### Phone Port Statistics

Phone Port	1	1
Channel	1	3
RxVoicePackets	0	0
RxMinJitter	0	0
RxMaxJitter	0	0
RxRTPAvgJitter	0	0
RxDTMFPackets	0	0
TxVoicePackets	0	0
TxGrantReSyncCount	0	0
TxDTMFPackets	0	0
MicroOverflowCount	0	0
PktsLostByNetwork	0	0
TxHoldDropCount	0	0
RxHoldDropCount	0	0

Home

Advanced

Tools

Status

Help

### Diagnostics

This page provides for ping diagnostics to help with IP connectivity problems.

Ping Target

Test

Ping Result



Help

Home

Advanced

Tools

Status

Help

## Home

- Wizard
- LAN

## Advanced

- VoIP
- Misc.

## Tools

- Admin
- System
- Firmware
- Time
- Reboot

## Status

- Device Info
- Stats
- Diagnostics