

D-Link Quick Installation Guide

This product works with the following operating system software: **Windows XP, Windows 2000, Windows Me, Windows 98SE**



DWL-G520+

Xtreme G+ 2.4GHz
Wireless PCI Adapter

Before You Begin

You must have at least the following:

- A desktop computer with an available 32-bit PCI slot
- At least a 300 MHz processor and 32MB of memory
- An 802.11g or 802.11b Access Point (for Infrastructure Mode) or another 802.11g or 802.11b wireless adapter (for Ad-Hoc; Peer-to-Peer networking mode.)

Check Your Package Contents

These are the items included with your DWL-G520+ purchase:



DWL-G520+ Xtreme G+ 2.4GHz Wireless PCI Adapter



CD-ROM (containing Drivers, Manual and Warranty)

If any of the above items are missing, please contact your reseller.

1

Insert the D-Link CD-ROM Into Your Computer

Turn on the computer and **Insert** the **D-Link Xtreme G+ DWL-G520+ Driver CD** in the CD-ROM drive.

The step-by-step instructions that follow are shown in **Windows XP**. The steps and screens are similar for the other Windows operating systems



Do **NOT** install the DWL-G520+ Wireless PCI Adapter into your computer before installing the driver software from the D-Link CD!

1

Continued...

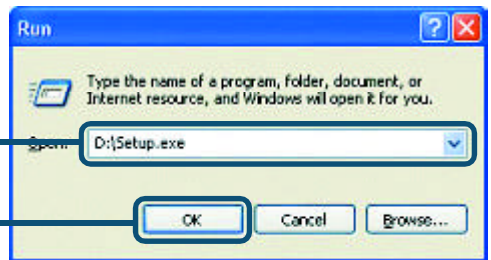
The Install Screen will appear.

Click **Install Drivers**



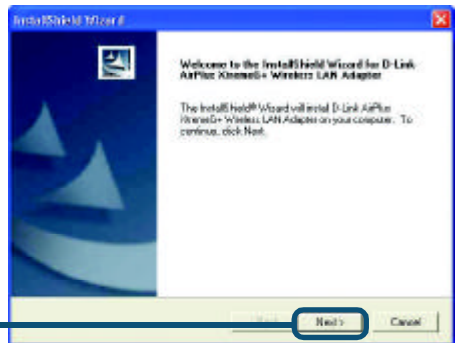
If the CD Autorun function does not automatically start on your computer, type "D:\Setup.exe." If it does start, proceed to the next screen.

Type **"D:\Setup.exe."**

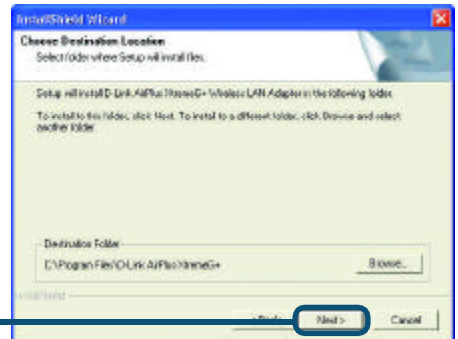


! The letter **"D"** represents the letter of the CD-ROM drive. Your CD-ROM drive may be a different drive letter.

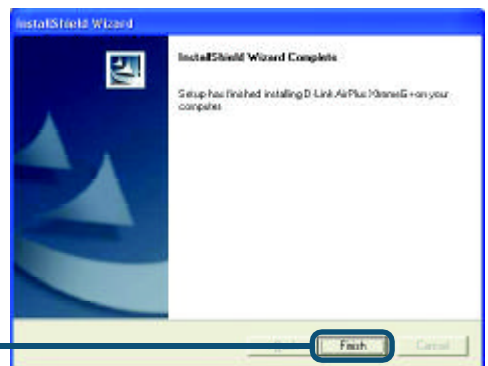
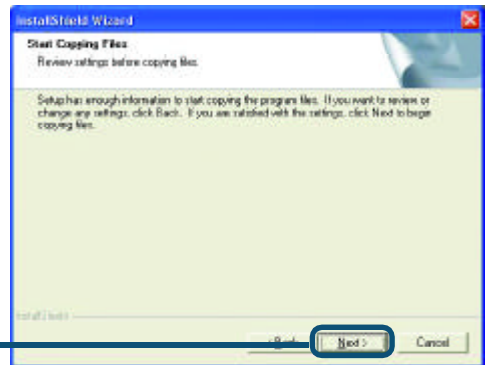
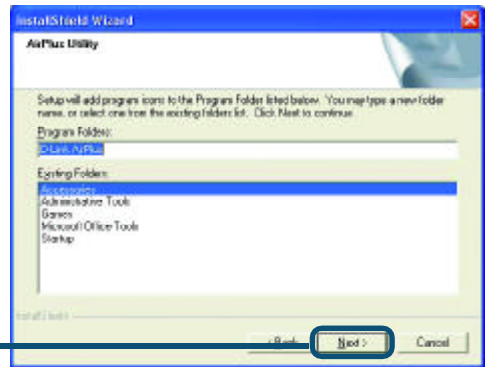
Click **OK**



Click **Next**



Click **Next**

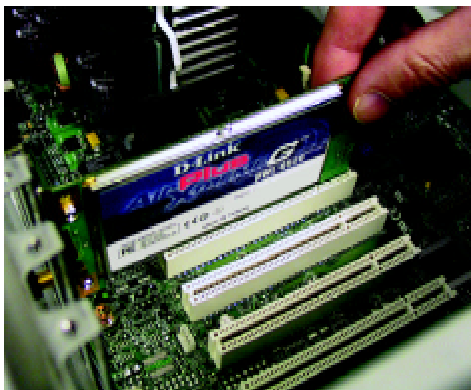


Shut down your computer

2

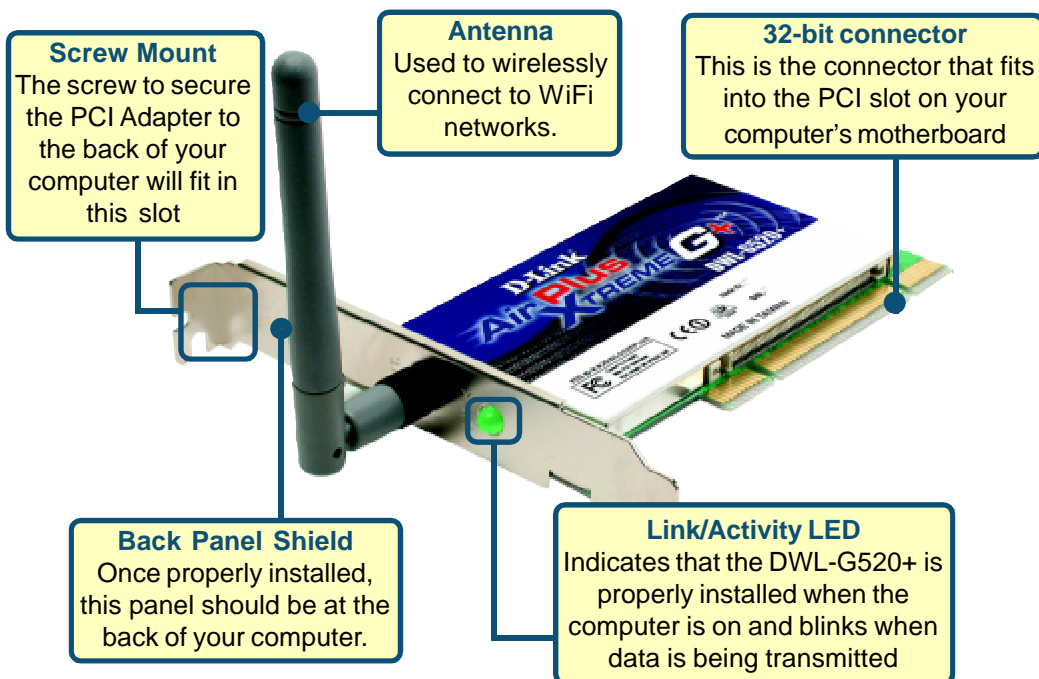
Installing the DWL-G520+ Wireless PCI Adapter in Your Computer

- A.** Make sure to turn off your computer and unplug the power cord.
Remove the back cover of the computer.
- B.** Install the DWL-G520+ carefully and firmly seat it into an available PCI slot (which is usually “white” or “cream” colored).



⚠ To avoid damage caused by static electricity, make sure to properly ground yourself by first touching a metal part of your computer to discharge any static electricity before working with the DWL-G520+ Wireless PCI Adapter.

- C.** Secure the DWL-G520+ back panel shield with a screw.
- D.** Replace the computer's cover.
- E.** Place the computer back in its normal position.
- F.** Attach the DWL-G520+'s antenna to the socket on the back panel shield.



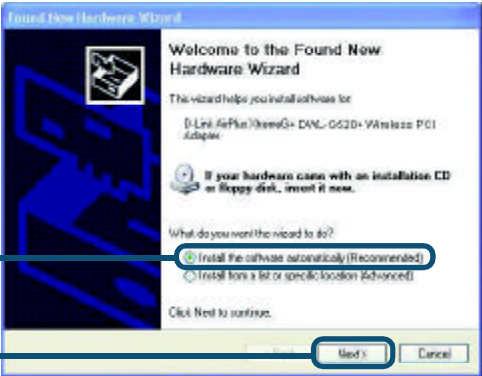
3

Restart Your Computer

When you restart your computer this **Found New Hardware Wizard (Windows XP)** screen will appear:

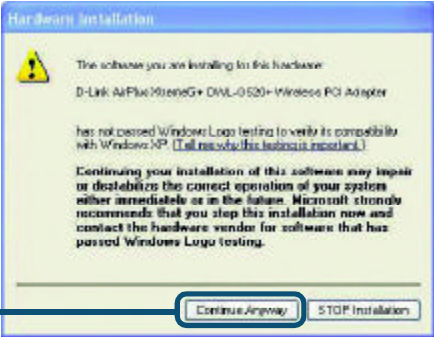
Select **Install the software automatically (Recommended)**

Click **Next**




⚠ For Windows XP: This **Hardware Installation** alert screen may appear after the desktop computer restarts.

Click **Continue Anyway** to finalize the installation

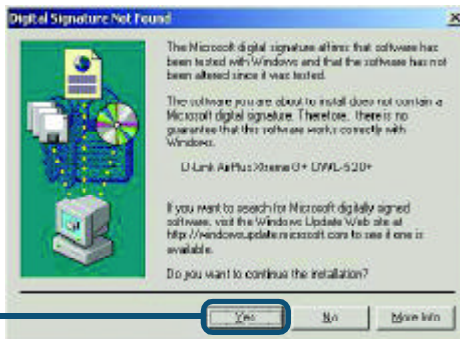



Click **Finish** to finalize the installation.

3 Continued...

 For Windows 2000, this **Digital Signature Not Found** screen may appear after your computer restarts.

Click Yes to finalize the installation.



 The D-Link driver software for this device is undergoing Windows Logo testing. Microsoft certification is pending.

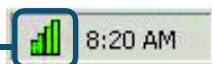
4 Your Installation is Complete!

After you've continued in Windows 2000, ME, or 98SE, the D-Link AirPlus Xtreme G+ DWL-G520+ **Configuration Utility** will automatically start and the utility icon will appear in the bottom right hand corner of the desktop screen (systray). **If this icon appears GREEN, then you have successfully installed the DWL-G520+, are connected to a wireless network and are ready to communicate!**

If the utility icon does not appear, double-click the **shortcut icon** that has appeared on your desktop.



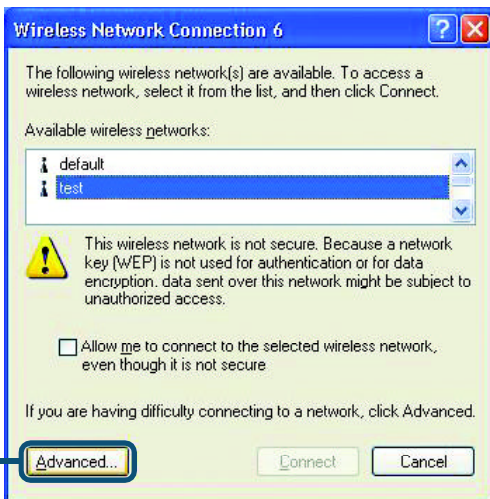
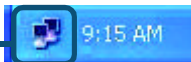
Double-click the **utility icon** to use the configuration utility.



Appendix

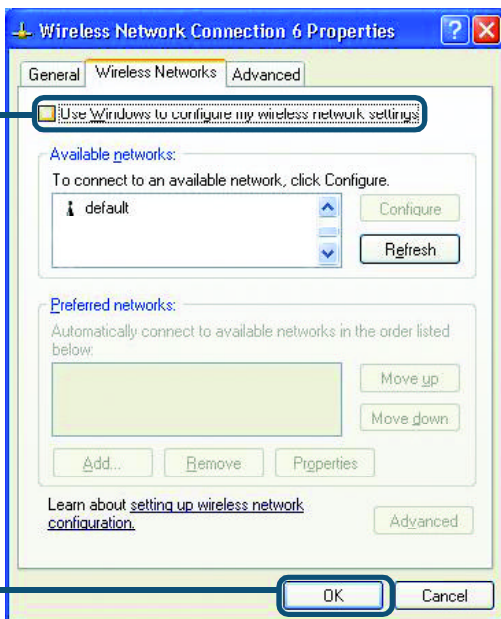
For Windows XP, if you wish to use the Xtreme G+ utility, please do the following steps.

Click the **XP Networking icon** to use the Zero Configuration Wireless Settings.



Click **Advanced**

Uncheck "Use Windows to configure my wireless network settings."



Click **OK**

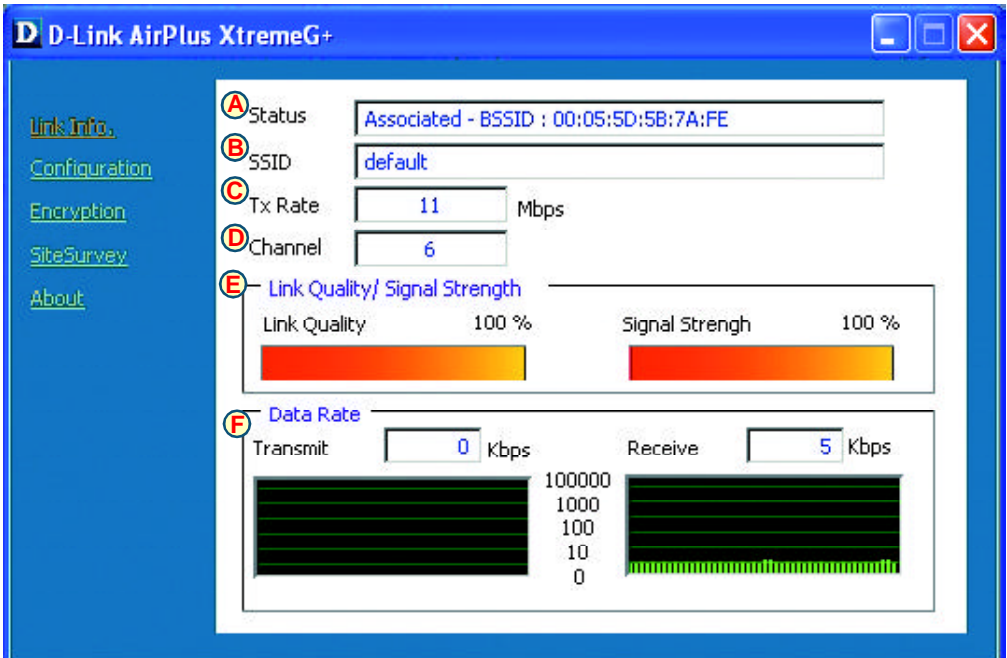
Appendix (Continued)

Using the Configuration Utility

A. Status: Displays the MAC Address of the Access Point that is associated with the DWL-G520+.

B. SSID: The Service Set Identifier is the name assigned to the wireless network. The factory SSID setting is set to **default**.

C. TxRate: The default setting is **Auto**; meaning, TxRate settings are automatically determined by the DWL-G520+ depending on the distance from the access point.



D. Channel: Displays the channel information. By default, the channel is set to 6. Please note that the DWL-G520+ will automatically adjust channel depending on the Access Point.

E. Link Quality / Signal Strength: Displays the Link Quality for the DWL-G520+ wireless connection to the access point. The Signal Strength represents the wireless signal between the access point and the DWL-G520+. The percentage coincides with the graphical bar.

F. Data Rate: Graphically displays the statistics of data transmitted and received.

G. SSID: The Service Set Identifier is the name assigned to the wireless network. The factory SSID setting is set to **default**. Make changes here to match the SSID on existing Wireless Router or Access Point.

H. Wireless Mode: The factory setting is set to **Infrastructure**. Ad-Hoc mode is used for peer-to-peer networking.

I. Channel: By default, the channel is set to **6**. Channel selection is automatically adjusted by the DWL-G520+ depending on the channel setting of the access point selected for association. To change the channel settings, the **Wireless Mode** must be set to **Ad-hoc**.

The screenshot shows the 'Configuration' tab of the D-Link AirPlus XtremeG+ web interface. The left sidebar contains links for 'Link Info', 'Configuration >>>', 'Encryption', 'Site Survey', and 'About'. The main configuration area has several settings, each with a lettered icon in a circle: 'G' for SSID (set to 'default'), 'H' for Wireless Mode (set to 'Infrastructure'), 'I' for Channel (set to '6'), 'J' for Tx Rate (set to 'Auto'), 'K' for Preamble (set to 'Long Preamble'), and 'L' for Power Mode (set to 'Continuous Access Mode'). To the right of these settings is a '8x Config' section with two radio buttons: '8x Disable' and '8x Enable', with '8x Enable' being selected. At the bottom of the configuration area are 'Apply' and 'Cancel' buttons.

J. TxRate: You can adjust the transmission rate to get the best signal possible depending on your usage and your environment.

K. Power Mode: By default, Power Mode is set to Continuous Access Mode. **Continuous Access Mode** — this default setting consumes the most power. **Maximum Power Save** — this setting consumes the least power. **Power Save** — this setting consumes a moderate amount of power.

IP Address Configuration

To connect to a network, **make sure the proper network settings are configured for DWL-G520+.**

For Microsoft Windows XP:

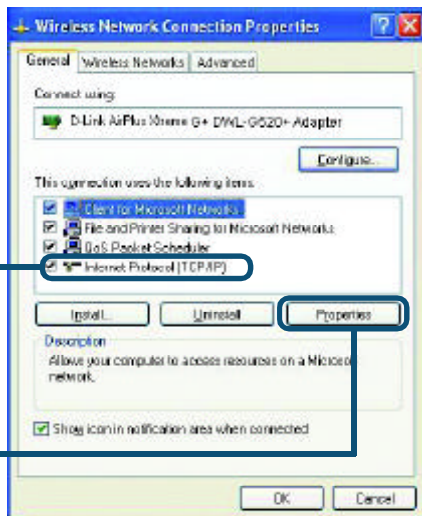
Go to **Start > right click on**

My Network Places >

select **Properties > Double-click on the Network Connection** associated with the DWL-G520+.

Click **Internet Protocol (TCP/IP)**

Click **Properties**



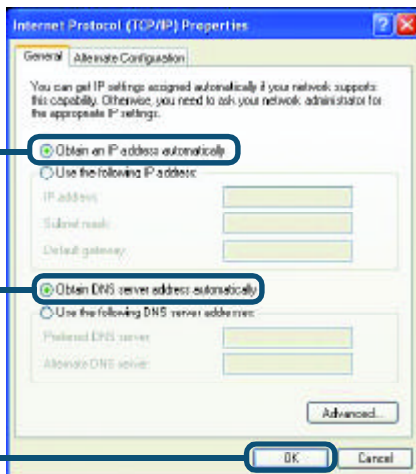
Dynamic IP Address setup

Used when a **DHCP server** is available on the local network. (i.e. Router)

Select **Obtain an IP address automatically** (if the Wireless Router or Access Point has DHCP server enabled)

Select **Obtain DNS server address automatically**

Click **OK**



Static IP Address setup

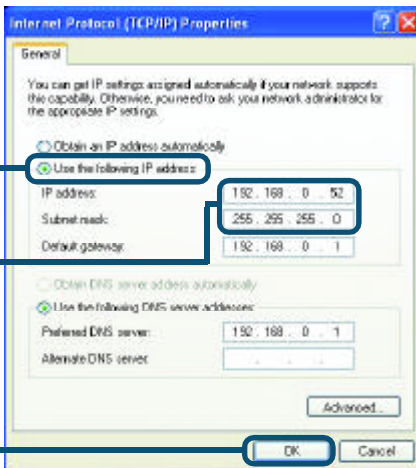
Used when a **DHCP server** is not available on the local network.

Select **Use the following IP address**

IP address: **192.168.0.52**
Subnet mask: **255.255.255.0**

Input a static IP address in the same range as the Wireless Router or Access Point.

Click **OK**

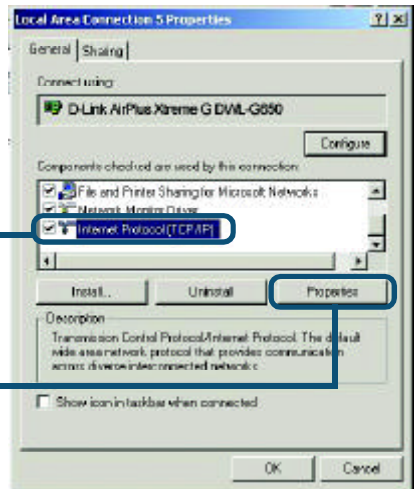


For Windows 2000 users:

Go to **Start > Settings > Network and Dial-up Connections** > Double-click on the **Local Area Connection** associated with the DWL-G520+ > select **Properties**

Click **Internet Protocol (TCP/IP)**

Click **Properties**



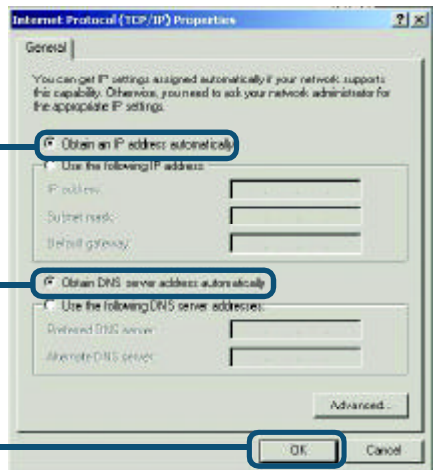
Dynamic IP Address setup

Used when a **DHCP server** is available on the local network. (i.e. Router)

Select **Obtain an IP address automatically** (if the Wireless Router or Access Point has DHCP server enabled)

Select **Obtain DNS server address automatically**

Click **OK**



Static IP Address setup

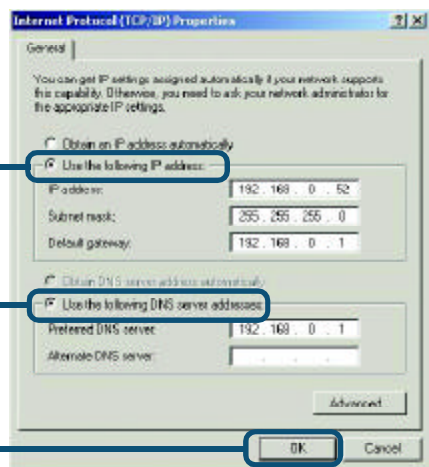
Used when a **DHCP server** is not available on the local network.

Select **Use the following IP address**

IP address: 192.168.0.52
Subnet mask: 255.255.255.0

Input a static IP address in the same range as the Wireless Router or Access Point.

Click **OK**



Technical Support

You can find software updates and user documentation on the D-Link website.

D-Link provides free technical support for customers within the United States and within Canada for the duration of the warranty period on this product.

U.S. and Canadian customers can contact D-Link technical support through our website, or by phone.

Tech Support for customers within the United States:

D-Link Technical Support over the Telephone:

(877) 453-5465

24 hours a day, seven days a week.

D-Link Technical Support over the Internet:

<http://support.dlink.com>

email: support@dlink.com

Tech Support for customers within Canada:

D-Link Technical Support over the Telephone:

(800) 361-5265

Monday to Friday 8:30am to 9:00pm EST

D-Link Technical Support over the Internet:

<http://support.dlink.ca>

email: support@dlink.ca

