

D-Link[®]

Quick Installation Guide

This product can be set up using any current web browser, i.e., Internet Explorer 6 or Netscape Navigator 7



DWL-G810
D-Link AirPlus XtremeG
Ethernet-to-Wireless Bridge

Before You Begin

You must have at least the following:

An Ethernet-enabled device, such as a game console, laptop or desktop computer, network printer or set-top box that will connect to the DWL-G810.

Check Your Package Contents



DWL-G810 Ethernet-to-Wireless Bridge



CD-ROM (Manual and Warranty)



Ethernet (CAT5 UTP) Cable



5V DC 2.5A Power Adapter



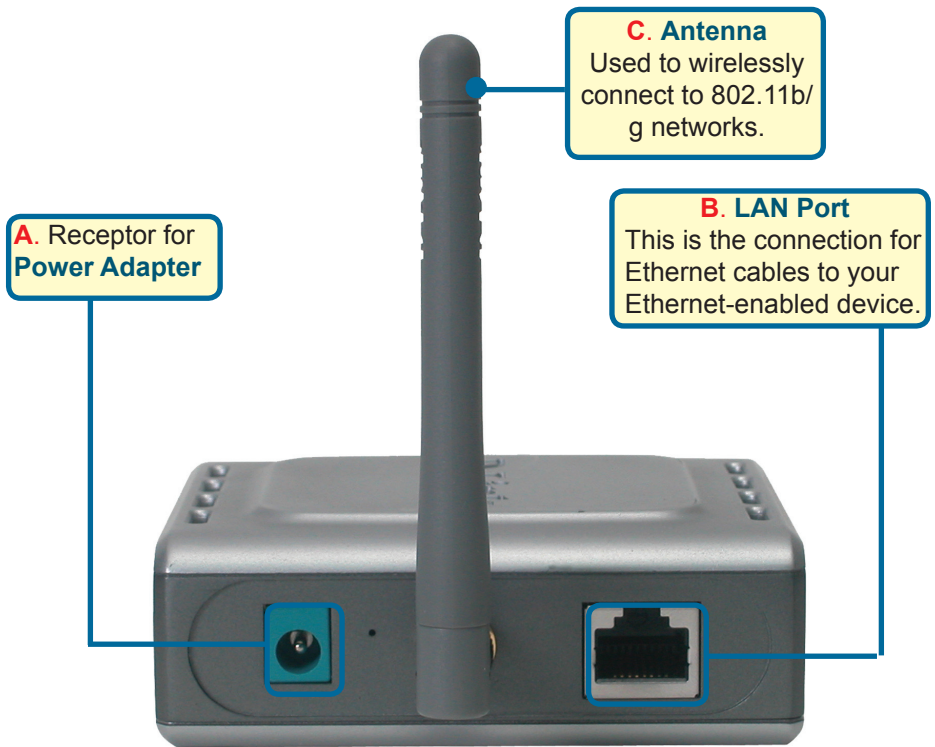
Using a power supply with a different voltage rating will damage this product and void its warranty.

If any of the above items are missing, please contact your reseller.

1

Connecting the DWL-G810 to your Ethernet-enabled device

- A.** First, connect the power adapter to the **receptor** at the back panel of the DWL-G810 and then plug the other end of the power adapter to a wall outlet or power strip. The Power LED will turn **ON** to indicate proper operation.
- B.** Insert one end of an Ethernet cable (included) to the Ethernet port on the back panel of the DWL-G810 and connect the other end to the Ethernet port located on the device (e.g., a Set Top Box, Gaming Console, laptop or desktop computer, or network printer.) The LED light will blink when there is data transfer through the wireless connection. (Note: The Ethernet port on the DWL-G810 is Auto-MDI/MDIX. Meaning you can use a straight-through or crossover-cable to the Ethernet Port.)
- C.** The antenna is used by the DWL-G810 to connect to other 802.11b/g wireless devices.



2

Connecting the DWL-G810 in Infrastructure Mode

Setup #1

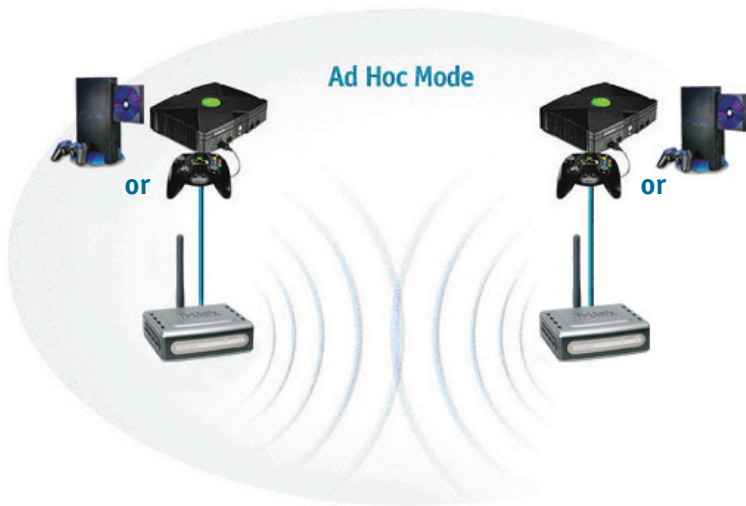


Connect an Ethernet cable from the DWL-G810 to your Ethernet enabled: Desktop PC, Laptop PC, Set-Top-Box, or Gaming Console.

3

Connecting the DWL-G810 in Ad-Hoc Mode

Setup #2



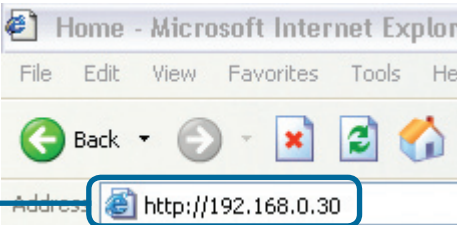
4

Web-based Configuration

Before You Begin the Configuration

It's best to use a computer (with an Ethernet adapter) that is connected to a switch for configuring the DWL-G810. (**Note:** You also have the option of connecting the DWL-G810 directly to the computer that will be used for configuration). The default IP address for the DWL-G810 is **192.168.0.30** with a Subnet Mask of **255.255.255.0**. You will need to assign your computer a Static IP address within the same range as the DWL-G810 IP address for the purpose of configuring the DWL-G810. **See the Manual on the CD-ROM if you need assistance in assigning a Static IP address for your network adapter.**

Open your Web browser and type "**http://192.168.0.30**" into the URL address box. Then press the **Enter** or **Return** key.

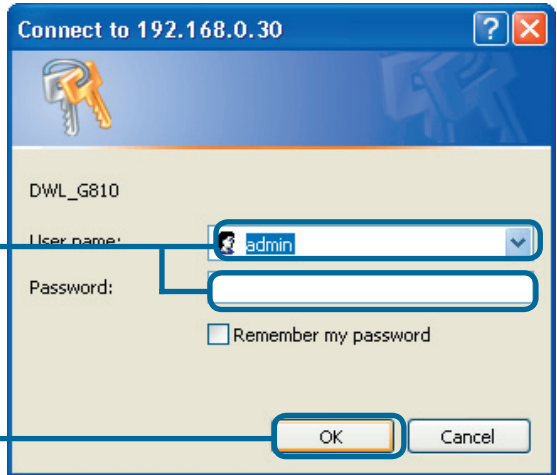


4 Continued...

The logon pop-up screen will appear.

Type **admin** for the username and leave the password field blank.

Click **OK**



Connect to 192.168.0.30

DWL-G810

User name:

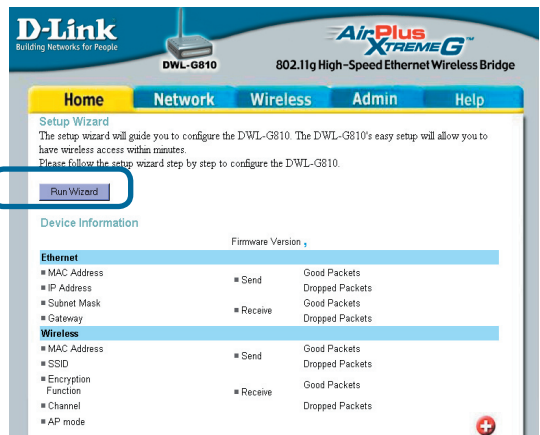
Password:

☐ Remember my password

OK Cancel

Once you have logged in, the **Home** screen will appear.

Click **Run Wizard**



D-Link Building Networks for People

DWL-G810

AirPlus Xtreme G 802.11g High-Speed Ethernet Wireless Bridge

Home Network Wireless Admin Help

Setup Wizard
The setup wizard will guide you to configure the DWL-G810. The DWL-G810's easy setup will allow you to have wireless access within minutes.
Please follow the setup wizard step by step to configure the DWL-G810.

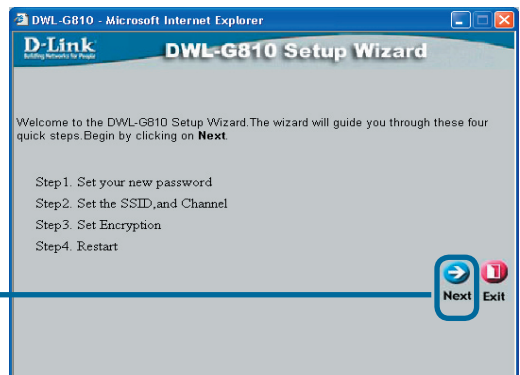
Run Wizard

Device Information

Ethernet		Firmware Version	
MAC Address	Send	Good Packets	Dropped Packets
IP Address	Receive	Good Packets	Dropped Packets
Subnet Mask		Good Packets	Dropped Packets
Gateway		Good Packets	Dropped Packets
Wireless			
MAC Address	Send	Good Packets	Dropped Packets
SSID	Receive	Good Packets	Dropped Packets
Encryption Function		Good Packets	Dropped Packets
Channel		Good Packets	Dropped Packets
AP mode		Good Packets	Dropped Packets

You will see the following screens.

Click **Next**



D-Link Building Networks for People

DWL-G810 Setup Wizard

Welcome to the DWL-G810 Setup Wizard. The wizard will guide you through these four quick steps. Begin by clicking on **Next**.

Step 1. Set your new password
Step 2. Set the SSID, and Channel
Step 3. Set Encryption
Step 4. Restart

Next Exit

4

Continued...

Step 1 - Set up your new password. You have the option to establish a password.

Click **Next**

D-Link DWL-G810 Setup Wizard

Set Password


You may change the **Admin** account password by entering a new password. Click **Next** to continue.

Next Password:

Confirm Password:

Back Next Exit

Step 2 - Wireless Setup
 The default wireless settings are:
 SSID = **default**
 Channel = **6**
 Operating Mode = **Infrastructure**

 For Set Up #2 select Ad-hoc as the operating mode.

Click **Next**

D-Link DWL-G810 Setup Wizard

Set Wireless LAN Connection

Select the Operating Mode, and enter in the SSID name and channel number to be used for the Wireless Bridge. Click **Next** to continue.

Operating Mode: ☐ Ad-hoc ☒ Infrastructure

SSID:

Channel:

Back Next Exit

Step 3 - Encryption
 The DWL-G810 is capable of two levels of wireless encryption - 64-bit, and 128-bit.

Click **Next**

D-Link DWL-G810 Setup Wizard

Setup Encryption

If you wish to use encryption, enable it here and enter the encryption Key values. Click **Next** to continue.

WEP: ☐ Enabled ☒ Disabled

Encryption:

WEP Mode:

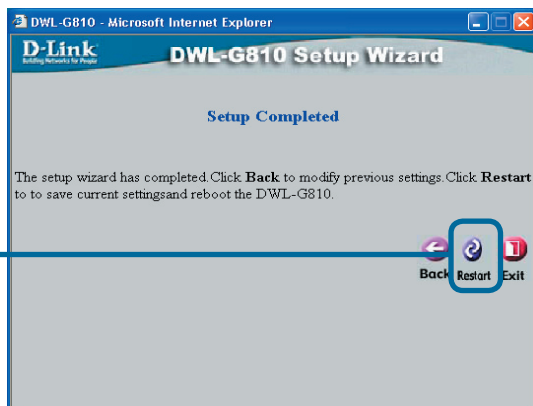
Key1:

Key2:

Key3:

Back Next Exit

Click **Restart**



You have completed the Configuration of the DWL-G810!

Appendix

Xbox Setup

Step 1 - Please refer to Step 4 for configuring and modifying the wireless settings of the DWL-G810

The screenshot shows the D-Link DWL-G810 web interface. The top navigation bar includes 'Home', 'Network', 'Wireless' (selected), 'Admin', and 'Help'. The 'Wireless Settings' page is displayed with the following options:

- Operating Mode: ☐ Ad-hoc ☐ Infrastructure
- AP Name:
- SSID:
- Remote AP MAC: [Site Survey](#)
- Channel: (for ad-hoc mode only)
- WEP: ☐ Enabled ☐ Disabled
- WEP Encryption:
- WEP Mode:
- Key1:
- Key2:
- Key3:
- Key4:
- TX Rates: (Mbps)
- 11g Only Mode: ☐ Enabled ☐ Disabled
- Authentication: ☐ Open System ☐ Shared Key

At the bottom right, there are three status icons: a green checkmark, an orange X, and a red plus sign.

Step 2 - Connect an Ethernet cable from the DWL-G810 to the Ethernet port on the back of your Xbox.



In order to connect to the XBox Live service, you will need to have the proper XBox Live equipment and account.



Appendix

PlayStation 2 Setup

Step 1 - Please refer to Step 4 for configuring and modifying the wireless settings of the DWL-G810

The screenshot shows the D-Link DWL-G810 web interface. At the top, the D-Link logo and 'AirPlus Xtreme G' branding are visible. The page title is '802.11g High-Speed Ethernet Wireless Bridge'. The navigation tabs are 'Home', 'Network', 'Wireless', 'Admin', and 'Help'. The 'Wireless' tab is selected, and the 'Wireless Settings' section is active. The settings include: Operating Mode (radio buttons for Ad-hoc and Infrastructure), AP Name (text field), SSID (text field), Remote AP MAC (text field with a 'Site Survey' button), Channel (dropdown menu), WEP (radio buttons for Enabled and Disabled), WEP Encryption (dropdown menu showing '64Bit'), WEP Mode (dropdown menu showing 'HEX'), Key1 through Key4 (text fields), TX Rates (dropdown menu showing '1'), 11g Only Mode (radio buttons for Enabled and Disabled), and Authentication (radio buttons for Open System and Shared Key). At the bottom right, there are three status icons: a green checkmark, a red X, and a red plus sign.

Step 2 - Connect an Ethernet cable from the DWL-G810 to the Ethernet port on the back of your PlayStation 2.



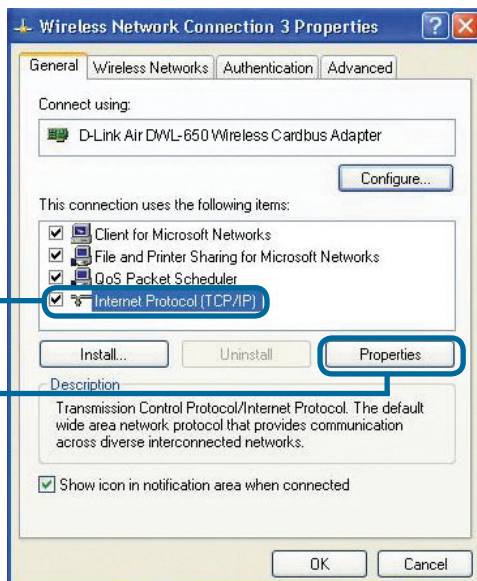
Appendix

Assigning a Static IP Address in Windows

To assign a Static IP Address to the laptop or computer that you are using to configure the DWL-G810, please do the following:

Note: The following screens are taken using Windows XP. Your screens may look similar.

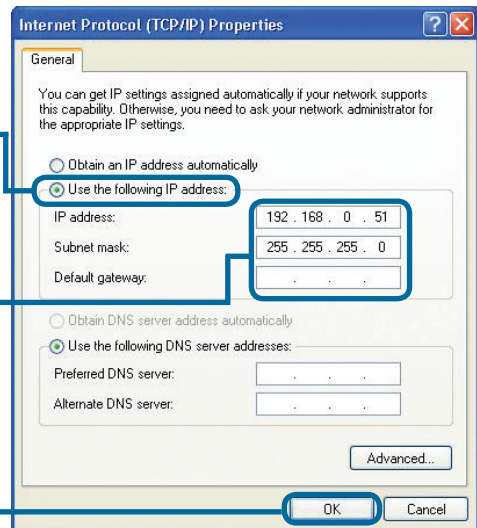
Go to **Start** > Double-click on **Control Panel** > Double-click on **Network Connections** > Right-click on **Local Area Connections** > Click **Properties**



Highlight **Internet Protocol (TCP/IP)**

Click **Properties**

Select **Use the following IP address** in the Internet Protocol (TCP/IP) Properties window



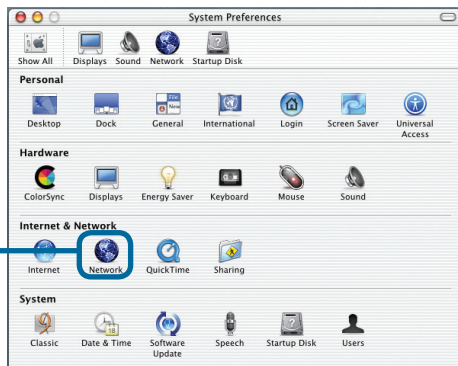
Input your IP address and subnet mask. (The IP Address must be within the same range as the DWL-G810. The IP Address of the DWL-G810 is **192.168.0.30**. You can assign 192.168.0.51 for your computer. **No two computers can have the same IP Address.** Assign a subnet mask of **255.255.255.0**.)

Click **OK**

For Apple Macintosh OS X:

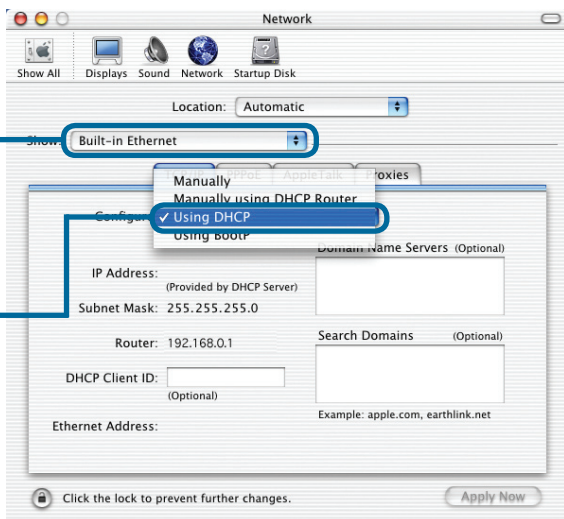
Go to the Apple Menu Click on **Network** and Select **System Preferences**

Click on **Network**



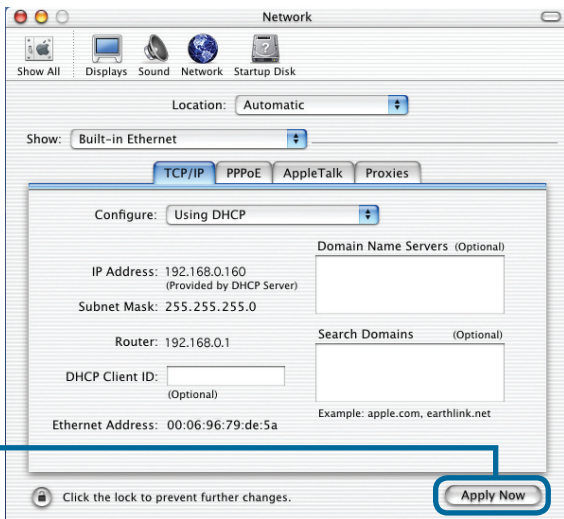
Select **Built in Ethernet** in the Show pull-down menu

Select **Using DHCP** in the Configuration pull-down menu



The IP address information, the Subnet Mask, the Router's IP address and the Ethernet adapter address will appear

Click on **Apply Now**



Technical Support

You can find software updates and user documentation on the D-Link website.

D-Link provides free technical support for customers within the United States and within Canada for the duration of the warranty period on this product.

U.S. and Canadian customers can contact D-Link technical support through our website, or by phone.

Tech Support for customers within the United States:

D-Link Technical Support over the Telephone:

(877) 453-5465

24 hours a day, seven days a week

D-Link Technical Support over the Internet:

<http://support.dlink.com>

email: support@dlink.com

Tech Support for customers within Canada:

D-Link Technical Support over the Telephone:

(800) 361-5265

Monday to Friday 8:30am to 9:00pm EST

D-Link Technical Support over the Internet:

<http://support.dlink.ca>

email: support@dlink.ca

Tech Support for customers within the United Kingdom & Ireland:

D-Link UK & Ireland Technical Support over the Telephone:

+44 (0)20 7365 8440 (United Kingdom)

+353 (0)12 421 061 (Ireland)

Monday to Friday 8:00 am to 10:00 pm

D-Link Technical Support over the Internet:

<http://www.dlink.co.uk>

D-Link®

Building Networks for People