

## DXS-3600-32S

### Firmware 2.00.023

#### Firmware upgrade via console/TFTP:

TFTP server(192.168.0.100) <-> (MGMT) DXS3600 (192.168.0.1)

Firmware file name: R1.10B25

DXS-3600-16S>enable

DXS-3600-16S#copy tftp: flash

Address of remote host []? 192.168.0.100

Source filename []? R110B25.had

Destination filename []? R110B25.had

Accessing tftp://192.168.0.100/R110B25.had...

Transmission start...

Transmission finished, file length 8437308 bytes.

Please wait, programming flash..... Done.

DXS-3600-16S#

5 2012-11-28 10:28:13 INFO(6) Firmware upgraded by console was successfully (Username: Anonymous)

DXS-3600-16S#dir

Directory of flash:

1 -rw- 8437308 2012/11/28 10:27:54 R110B25.had

2 -rw- 8137216 2012/07/19 16:50:17 23.had

3 -rw- 118294 2012/08/29 11:05:06 test.cfg

4 -rw- 156 2012/10/16 15:31:51 config.cfg

5 d--- 0 2012/11/28 10:13:43 system

1048064 KB total (1030692 KB free)

DXS-3600-16S#config t

DXS-3600-16S(config)#boot system flash R110B25.had

DXS-3600-16S(config)#ex

DXS-3600-16S#show bootup

Bootup Firmware : /c:/R110B25.had

Bootup Configuration : /c:/config.cfg

DXS-3600-16S#reboot

Are you sure you want to proceed with the system reboot?(y/n) y

Please wait, the switch is rebooting...

Create user for Web access:

DXS-3600-16S>

DXS-3600-16S>enable

DXS-3600-16S#configure terminal

DXS-3600-16S(config)#username admin password admin

DXS-3600-16S(config)#username admin privilege 15

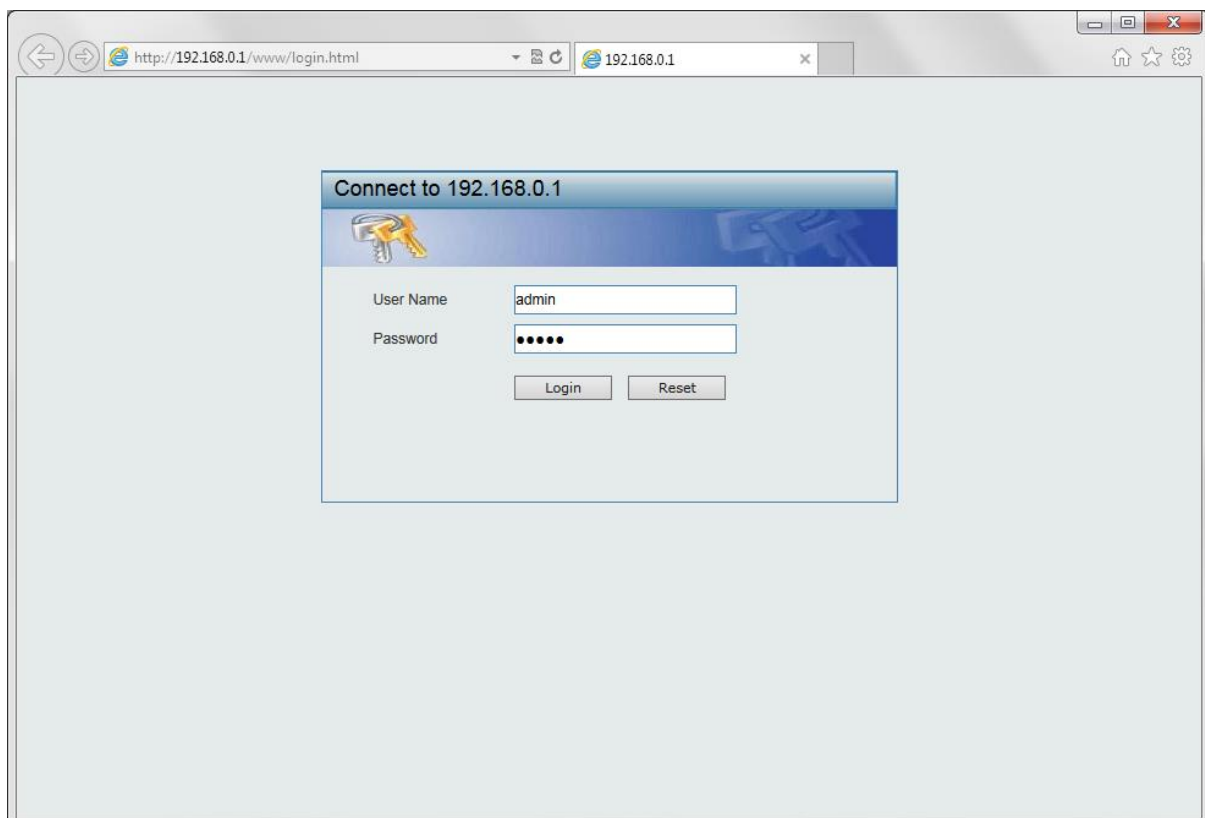
DXS-3600-16S(config)#exit

DXS-3600-16S#copy running-config bootup-config

Destination filename bootup-config? [y/n]: y

Saving all configurations to NV-RAM..... Done.

DXS-3600-16S#



Browser: http://192.168.0.1/www/main.html?RpWebID=c1TN2BwFDJScEvIAKNBo DXS-3600-325

**D-Link** Building Networks for People

Refresh Interval: 10 secs

Logged in as: Administrator, admin-192.168.0.149 Logout

Fuzzy Search

- DXS-3600-325
- System
- Management
- L2 Features
- L3 Features
- QoS
- ACL
- Security
- Monitoring

**Device Information:**

IP: 10.90.90.90  
 Subnet Mask: 255.0.0.0  
 Gateway: 0.0.0.0  
 MAC: 28-10-7B-7D-C7-60  
 Firmware: Build 2.00.023  
 Boot code: Build 1.10.007  
 Hardware Version: B1  
 Serial Number: R3F51C5000001  
 System up time: 14/03/2000 12:21:59

Time	LogText
4	2000-03-14 12:20:08 Successful login through We
3	2000-03-14 12:18:35 Successful login through Co
2	2000-03-14 12:18:25 System started up
1	2000-03-14 12:18:25 System warm start

More

**Temperature**

21°C

**CPU**

Average 12 %  
20 %

**Fan**

Fan1 Fan2 Fan3 Active: Fan1

9039

**Used**

Flash: 1048064KB (2 %)  
 SD Card: (0 %)  
 Memory: 1352871KB (35 %)  
 744281KB

Browser: http://192.168.0.1/www/main.html?RpWebID=c1TN2BwFDJScEvIAKNBo DXS-3600-325

**D-Link** Building Networks for People

Refresh Interval: 10 secs

Logged in as: Administrator, admin-192.168.0.149 Logout

Search: vlan

After search:  
 1. Press ENTER to open the first result.  
 2. Press ←/→ to select the other.

- DXS-3600-325
- System
- Management
- L2 Features
  - VLAN
    - 802.1Q VLAN
    - 802.1v Protocol VLAN
      - Protocol VLAN Profile
      - Protocol VLAN Profile Interface
    - GVRP
      - GVRP Global
      - GVRP Port
      - GVRP Advertise VLAN
      - GVRP Forbidden VLAN
      - GVRP Statistics Table
    - MAC VLAN
    - VLAN Interface
    - Subnet VLAN
    - Private VLAN
  - Spanning Tree
  - Link Aggregation
  - L2 Protocol Tunnel
  - L2 Multicast Control
  - L3 Features
  - QoS
  - ACL
    - ACL Access List
    - ACL Interface Access Group
    - ACL VLAN Access Map
    - ACL VLAN Filter
  - Security
  - Monitoring

**Device Information:**

IP: 10.90.90.90  
 Subnet Mask: 255.0.0.0  
 Gateway: 0.0.0.0  
 MAC: 28-10-7B-7D-C7-60  
 Firmware: Build 2.00.023  
 Boot code: Build 1.10.007  
 Hardware Version: B1  
 Serial Number: R3F51C5000001  
 System up time: 14/03/2000 12:22:36

Time	LogText
4	2000-03-14 12:20:08 Successful login through We
3	2000-03-14 12:18:35 Successful login through Co
2	2000-03-14 12:18:25 System started up
1	2000-03-14 12:18:25 System warm start

More

**Temperature**

21°C

**CPU**

Average 12 %  
21 %

**Fan**

Fan1 Fan2 Fan3 Active: Fan1

9039

**Used**

Flash: 1048064KB (2 %)  
 SD Card: (0 %)  
 Memory: 1352871KB (35 %)  
 744281KB

Browser: http://192.168.0.1/www/main.html?RpWebID=c1TN2BwFDJScEvJAKNBo DXS-3600-32S

**D-Link** Building Networks for People

Refresh Interval: 10 secs

Save Configuration

System Management

Device Information:

- IP: 10.90.90.90
- Subnet Mask: 255.0.0.0
- Gateway: 0.0.0.0
- MAC: 28-10-7B-7D-C7-60
- Firmware: Build 2.00.023
- Boot code: Build 1.10.007
- Hardware Version: B1
- Serial Number: R3F51C5000001
- System up time: 14/03/2000 12:22:53

Temperature: 21°C

CPU: Average 12% (7% peak)

Time	LogText
4	2000-03-14 12:20:08 Successful login through We
3	2000-03-14 12:18:35 Successful login through Co
2	2000-03-14 12:18:25 System started up
1	2000-03-14 12:18:25 System warm start

Fan: 9039 rpm

Used:

- Flash: 1048064KB (2%)
- SD Card: 1352871KB (0%)
- Memory: 1352871KB (35%)

Browser: http://192.168.0.1/www/main.html?RpWebID=ZFPWiRnhN6BJgy10ur5X DXS-3600-32S

**D-Link** Building Networks for People

Refresh Interval: 10 secs

Save Configuration

Tools

Logged in as: Administrator, admin-192.168.0.149 Logout

Fuzzy Search

- DXS-3600-32S
  - System Management
    - Firmware Upgrade & Backup
      - Firmware Upgrade from HTTP
      - Configuration Restore & Backup
        - Firmware Upgrade from TFTP
      - Log Backup
        - Firmware Backup to HTTP
      - Reset
        - Firmware Backup to TFTP
      - Reboot System

including IP address and stacking information, and then will save, reboot.

except IP address, and then will save, reboot.

switch will be reset to its factory defaults including IP address.

Apply

Browser: http://192.168.0.1/www/main.html?RpWebID=e1TN2BwFDJScEvJAKNBo DXS-3600-32S

D-Link Building Networks for People

DXS-3600-32S  
Power1-FAN1  
Power2-FAN2  
MicroT-MGMT  
Console-SD  
Stack

Refresh Interval: 10 secs

Save Tools | Logged in as: Administrator, admin-192.168.0.149 Logout

### Port Settings

Port Settings

From Port: eth1/0/1 | To Port: eth1/0/1 | Medium Type: SFP | State: Enabled | MDIX: Auto | Flow Control: Off

Duplex: Auto | Capability Advertised: 10M 100M 1000M 10G | Description: 64 chars

Port	To Port	State	MDIX	Flow Control		Duplex	Speed	Description
				Send	Receive			
eth1/0/1	eth1/0/1	Enabled	Auto-mdix	Off	Off	Auto-duplex	Auto-speed	
eth1/0/2	eth1/0/2	Enabled	Auto-mdix	Off	Off	Auto-duplex	Auto-speed	
eth1/0/3	eth1/0/3	Enabled	Auto-mdix	Off	Off	Auto-duplex	Auto-speed	
eth1/0/4	eth1/0/4	Enabled	Auto-mdix	Off	Off	Auto-duplex	Auto-speed	
eth1/0/5	eth1/0/5	Enabled	Auto-mdix	Off	Off	Auto-duplex	Auto-speed	
eth1/0/6	eth1/0/6	Enabled	Auto-mdix	Off	Off	Auto-duplex	Auto-speed	
eth1/0/7	eth1/0/7	Enabled	Auto-mdix	Off	Off	Auto-duplex	Auto-speed	
eth1/0/8	eth1/0/8	Enabled	Auto-mdix	Off	Off	Auto-duplex	Auto-speed	
eth1/0/9	eth1/0/9	Enabled	Auto-mdix	Off	Off	Auto-duplex	Auto-speed	
eth1/0/10	eth1/0/10	Enabled	Auto-mdix	Off	Off	Auto-duplex	Auto-speed	
eth1/0/11	eth1/0/11	Enabled	Auto-mdix	Off	Off	Auto-duplex	Auto-speed	
eth1/0/12	eth1/0/12	Down	Auto-mdix	Off	Off	Auto-duplex	Auto-speed	
eth1/0/13	eth1/0/13	Down	Auto-mdix	Off	Off	Auto-duplex	Auto-speed	
eth1/0/14	eth1/0/14	Down	Auto-mdix	Off	Off	Auto-duplex	Auto-speed	
eth1/0/15	eth1/0/15	Down	Auto-mdix	Off	Off	Auto-duplex	Auto-speed	
eth1/0/16	eth1/0/16	Down	Auto-mdix	Off	Off	Auto-duplex	Auto-speed	
eth1/0/17	eth1/0/17	Down	Auto-mdix	Off	Off	Auto-duplex	Auto-speed	
eth1/0/18	eth1/0/18	Down	Auto-mdix	Off	Off	Auto-duplex	Auto-speed	
eth1/0/19	eth1/0/19	Down	Auto-mdix	Off	Off	Auto-duplex	Auto-speed	
eth1/0/20	eth1/0/20	Down	Auto-mdix	Off	Off	Auto-duplex	Auto-speed	
eth1/0/21	eth1/0/21	Down	Auto-mdix	Off	Off	Auto-duplex	Auto-speed	
eth1/0/22	eth1/0/22	Down	Auto-mdix	Off	Off	Auto-duplex	Auto-speed	
eth1/0/23	eth1/0/23	Down	Auto-mdix	Off	Off	Auto-duplex	Auto-speed	
eth1/0/24	eth1/0/24	Down	Auto-mdix	Off	Off	Auto-duplex	Auto-speed	

Browser: http://192.168.0.1/www/main.html?RpWebID=e1TN2BwFDJScEvJAKNBo DXS-3600-32S

D-Link Building Networks for People

DXS-3600-32S  
Power1-FAN1  
Power2-FAN2  
MicroT-MGMT  
Console-SD  
Stack

Refresh Interval: 10 secs

Save Tools | Logged in as: Administrator, admin-192.168.0.149 Logout

### Port Settings

Port Settings

From Port: eth1/0/1 | To Port: eth1/0/1 | Medium Type: RJ45 | State: Enabled | MDIX: Auto | Flow Control: Off

Duplex: Auto | Speed: Auto | Capability Advertised: 10M 100M 1000M 10G | Description: 64 chars

Port	Link Status	State	MDIX	Flow Control		Duplex	Speed	Description
				Send	Receive			
eth1/0/1	Down	Enabled	Auto-mdix	Off	Off	Auto-duplex	Auto-speed	
eth1/0/2	Down	Enabled	Auto-mdix	Off	Off	Auto-duplex	Auto-speed	
eth1/0/3	Down	Enabled	Auto-mdix	Off	Off	Auto-duplex	Auto-speed	
eth1/0/4	Down	Enabled	Auto-mdix	Off	Off	Auto-duplex	Auto-speed	
eth1/0/5	Down	Enabled	Auto-mdix	Off	Off	Auto-duplex	Auto-speed	
eth1/0/6	Down	Enabled	Auto-mdix	Off	Off	Auto-duplex	Auto-speed	
eth1/0/7	Down	Enabled	Auto-mdix	Off	Off	Auto-duplex	Auto-speed	
eth1/0/8	Down	Enabled	Auto-mdix	Off	Off	Auto-duplex	Auto-speed	
eth1/0/9	Down	Enabled	Auto-mdix	Off	Off	Auto-duplex	Auto-speed	
eth1/0/10	Down	Enabled	Auto-mdix	Off	Off	Auto-duplex	Auto-speed	
eth1/0/11	Down	Enabled	Auto-mdix	Off	Off	Auto-duplex	Auto-speed	
eth1/0/12	Down	Enabled	Auto-mdix	Off	Off	Auto-duplex	Auto-speed	
eth1/0/13	Down	Enabled	Auto-mdix	Off	Off	Auto-duplex	Auto-speed	
eth1/0/14	Down	Enabled	Auto-mdix	Off	Off	Auto-duplex	Auto-speed	
eth1/0/15	Down	Enabled	Auto-mdix	Off	Off	Auto-duplex	Auto-speed	
eth1/0/16	Down	Enabled	Auto-mdix	Off	Off	Auto-duplex	Auto-speed	
eth1/0/17	Down	Enabled	Auto-mdix	Off	Off	Auto-duplex	Auto-speed	
eth1/0/18	Down	Enabled	Auto-mdix	Off	Off	Auto-duplex	Auto-speed	
eth1/0/19	Down	Enabled	Auto-mdix	Off	Off	Auto-duplex	Auto-speed	
eth1/0/20	Down	Enabled	Auto-mdix	Off	Off	Auto-duplex	Auto-speed	
eth1/0/21	Down	Enabled	Auto-mdix	Off	Off	Auto-duplex	Auto-speed	

Browser: http://192.168.0.1/www/main.html?RpWebID=c1TN2BwFDJScEvJAKNBo DXS-3600-32S

D-Link Building Networks for People

Refresh Interval: 10 secs

Logged in as: Administrator, admin-192.168.0.149 Logout

Save Tools

System Log

System Configuration

Port Configuration

Port Settings

Port Status

Port Auto Negotiation

Jumbo Frame

System Log

Time Profile

Management

L2 Features

L3 Features

QoS

ACL

Security

Monitoring

### Port Settings

Port Settings

From Port: eth1/0/1 To Port: eth1/0/1 Medium Type: SFP State: Enabled MDIX: Auto Flow Control: Off

Duplex: Auto Speed: Auto

Capability Advertised:  10M  100M  1000M  10G

Description: 64 chars Apply

Port	To Port	State	MDIX	Flow Control		Duplex	Speed	Description
				Send	Receive			
eth1/0/1	10G	Enabled	Auto-mdix	Off	Off	Auto-duplex	Auto-speed	
eth1/0/2	10G Master	Enabled	Auto-mdix	Off	Off	Auto-duplex	Auto-speed	
eth1/0/3	10G Slave	Enabled	Auto-mdix	Off	Off	Auto-duplex	Auto-speed	
eth1/0/4	40G	Enabled	Auto-mdix	Off	Off	Auto-duplex	Auto-speed	
eth1/0/5	Down	Enabled	Auto-mdix	Off	Off	Auto-duplex	Auto-speed	
eth1/0/6	Down	Enabled	Auto-mdix	Off	Off	Auto-duplex	Auto-speed	
eth1/0/7	Down	Enabled	Auto-mdix	Off	Off	Auto-duplex	Auto-speed	
eth1/0/8	Down	Enabled	Auto-mdix	Off	Off	Auto-duplex	Auto-speed	
eth1/0/9	Down	Enabled	Auto-mdix	Off	Off	Auto-duplex	Auto-speed	
eth1/0/10	Down	Enabled	Auto-mdix	Off	Off	Auto-duplex	Auto-speed	
eth1/0/11	Down	Enabled	Auto-mdix	Off	Off	Auto-duplex	Auto-speed	
eth1/0/12	Down	Enabled	Auto-mdix	Off	Off	Auto-duplex	Auto-speed	
eth1/0/13	Down	Enabled	Auto-mdix	Off	Off	Auto-duplex	Auto-speed	
eth1/0/14	Down	Enabled	Auto-mdix	Off	Off	Auto-duplex	Auto-speed	
eth1/0/15	Down	Enabled	Auto-mdix	Off	Off	Auto-duplex	Auto-speed	
eth1/0/16	Down	Enabled	Auto-mdix	Off	Off	Auto-duplex	Auto-speed	
eth1/0/17	Down	Enabled	Auto-mdix	Off	Off	Auto-duplex	Auto-speed	
eth1/0/18	Down	Enabled	Auto-mdix	Off	Off	Auto-duplex	Auto-speed	
eth1/0/19	Down	Enabled	Auto-mdix	Off	Off	Auto-duplex	Auto-speed	
eth1/0/20	Down	Enabled	Auto-mdix	Off	Off	Auto-duplex	Auto-speed	
eth1/0/21	Down	Enabled	Auto-mdix	Off	Off	Auto-duplex	Auto-speed	

Browser: http://192.168.0.1/www/main.html?RpWebID=ZFPWiRnhN6Bjgy10ur5X DXS-3600-32S

D-Link Building Networks for People

Refresh Interval: 10 secs

Logged in as: Administrator, admin-192.168.0.149 Logout

Save Tools

Fuzzy Search

System Log

System Configuration

Port Configuration

Port Settings

Port Status

Port Auto Negotiation

Jumbo Frame

System Log

Time Profile

Management

L2 Features

L3 Features

QoS

ACL

Security

Monitoring

### Port Status

Port Status

Port	Status	MAC Address	VLAN	Flow Control Operator		Duplex	Speed	Type
				Send	Receive			
eth1/0/1	not-connected	28-10-7B-7D-C8-60	1	Off	Off	Auto	Auto	10GBASE-R
eth1/0/2	not-connected	28-10-7B-7D-C8-61	1	Off	Off	Auto	Auto	10GBASE-R
eth1/0/3	not-connected	28-10-7B-7D-C8-62	1	Off	Off	Auto	Auto	10GBASE-R
eth1/0/4	not-connected	28-10-7B-7D-C8-63	1	Off	Off	Auto	Auto	10GBASE-R
eth1/0/5	not-connected	28-10-7B-7D-C8-64	1	Off	Off	Auto	Auto	10GBASE-R
eth1/0/6	not-connected	28-10-7B-7D-C8-65	1	Off	Off	Auto	Auto	10GBASE-R
eth1/0/7	not-connected	28-10-7B-7D-C8-66	1	Off	Off	Auto	Auto	10GBASE-R
eth1/0/8	not-connected	28-10-7B-7D-C8-67	1	Off	Off	Auto	Auto	10GBASE-R
eth1/0/9	not-connected	28-10-7B-7D-C8-68	1	Off	Off	Auto	Auto	10GBASE-R
eth1/0/10	not-connected	28-10-7B-7D-C8-69	1	Off	Off	Auto	Auto	10GBASE-R
eth1/0/11	not-connected	28-10-7B-7D-C8-6A	1	Off	Off	Auto	Auto	10GBASE-R
eth1/0/12	not-connected	28-10-7B-7D-C8-6B	1	Off	Off	Auto	Auto	10GBASE-R
eth1/0/13	not-connected	28-10-7B-7D-C8-6C	1	Off	Off	Auto	Auto	10GBASE-R

DXS-3600-32S

Refresh Interval: 10 secs

Logged in as: Administrator, admin-192.168.0.149

**Port Auto Negotiation**

Note: AN: Auto Negotiation; RS: Remote Signaling; CS: Config Status; CB: Capability Bits; CAB: Capability Advertised Bits; CRB: Capability Received Bits; RFA: Remote Fault Advertised; RFR: Remote Fault Received

Port	AN	RS	CS	CB	CAB	CRB	RFA	RFR
eth1/0/1	Enabled	Not detected		-	-	-	Disabled	NoError
eth1/0/2	Enabled	Not detected		-	-	-	Disabled	NoError
eth1/0/3	Enabled	Not detected		-	-	-	Disabled	NoError
eth1/0/4	Enabled	Not detected		-	-	-	Disabled	NoError
eth1/0/5	Enabled	Not detected		-	-	-	Disabled	NoError
eth1/0/6	Enabled	Not detected		-	-	-	Disabled	NoError
eth1/0/7	Enabled	Not detected		-	-	-	Disabled	NoError
eth1/0/8	Enabled	Not detected		-	-	-	Disabled	NoError
eth1/0/9	Enabled	Not detected		-	-	-	Disabled	NoError
eth1/0/10	Enabled	Not detected		-	-	-	Disabled	NoError
eth1/0/11	Enabled	Not detected		-	-	-	Disabled	NoError
eth1/0/12	Enabled	Not detected		-	-	-	Disabled	NoError

DXS-3600-32S

Refresh Interval: 10 secs

Logged in as: Administrator, admin-192.168.0.149

**Jumbo Frame**

From Port: eth1/0/1 To Port: eth1/0/1 Maximum Receive Frame Size (64-12288): 1536 bytes

Apply

Port	Maximum Receive Frame Size (bytes)
eth1/0/1	1536
eth1/0/2	1536
eth1/0/3	1536
eth1/0/4	1536
eth1/0/5	1536
eth1/0/6	1536
eth1/0/7	1536
eth1/0/8	1536
eth1/0/9	1536
eth1/0/10	1536
eth1/0/11	1536
eth1/0/12	1536
eth1/0/13	1536
eth1/0/14	1536
eth1/0/15	1536
eth1/0/16	1536

DXS-3600-32S

Refresh Interval: 10 secs

Logged in as: Administrator, admin-192.168.0.149

### System Log Settings

**Global State**

Source Interface State: **Enabled**

Type: **VLAN** Interface ID (1-4094): **1** Apply

**Buffer Log Settings**

Buffer Log State: **Enabled**

Severity: **7(Debugging)**

Discriminator Name: **15 chars**

Write Delay (0-65535): **0** sec  Infinite Apply

**Console Log Settings**

Console Log State: **Enabled**

Severity: **7(Debugging)**

Discriminator Name: **15 chars** Apply

**SMTP Log Settings**

SMTP Log State: **Disabled**

Severity: **4(Warnings)**

Discriminator Name: **15 chars** Apply

DXS-3600-32S

Refresh Interval: 10 secs

Logged in as: Administrator, admin-192.168.0.149

### Discriminator Log Settings

**Discriminator Log Settings**

Discriminator: **15 chars**

Facility: **Drops**

**Includes**

STACKING  PORT  VPLS

STP  LAC  FDB  LLDP

ACL  QOS  PORTSEC  WAC

DHCP  DHCPV6  STORM\_CT...  SSH

CLI  WEB  SNMP  OSPF

BGP  VRRP  CFM  ERPS

DDM  AAA  DoS  DEVICE

DAI  MPLS  LDP  L2VPN

RADIUS  DOT1X  LBD  BPDU\_PRO...

MAC  SAFEGUAR...  DULD  RIPNG

CFG  FIRMWARE  MGMTPORT

Severity: **Drops**

0(Emergencies)  1(Alerts)  2(Critical)  3(Errors)

4(Warnings)  5(Notifications)  6(Informational)  7(Debugging) Apply

Name	Facility	Facility List	Severity	Severity List
------	----------	---------------	----------	---------------



DXS-3600-32S  
Building Networks for People

DXS-3600-32S  
Power1 FAN1  
Power2 FAN2  
MGMT FAN3  
Console SD  
Stack

Refresh Interval: 10 secs

Save Tools

Logged in as: Administrator, admin-192.168.0.149 Logout

### System Log Server Settings

Log Server

Host IPv4 Address  
 Host IPv6 Address: 2013::1

UDP Port (1024-65535): 514  
 Severity: 4(Warnings)

Facility: 0  
 Discriminator Name: 15 chars

VRF Name: 12 chars

Apply

Total Entries: 0

Server IP Address	VRF Name	Severity	Facility	Discriminator Name	UDP Port
-------------------	----------	----------	----------	--------------------	----------

DXS-3600-32S  
Building Networks for People

DXS-3600-32S  
Power1 FAN1  
Power2 FAN2  
MGMT FAN3  
Console SD  
Stack

Refresh Interval: 10 secs

Save Tools

Logged in as: Administrator, admin-192.168.0.149 Logout

### System Log

System Log

Clear Log

Total Entries: 7

Index	Time	Level	Log Description
7	2000-03-14 12:39:14	INFO(6)	Successful login thr...
6	2000-03-14 12:34:01	INFO(6)	Web session timed ou...
5	2000-03-14 12:23:09	INFO(6)	Console session time...
4	2000-03-14 12:20:08	INFO(6)	Successful login thr...
3	2000-03-14 12:18:35	INFO(6)	Successful login thr...
2	2000-03-14 12:18:25	CRIT(2)	System started up
1	2000-03-14 12:18:25	CRIT(2)	System warm start

1/1 |< << 1 >> >| Go

Browser: http://192.168.0.1/www/main.html?RpWebID=ZFPWiRnhN6Bjgy10ur5X DXS-3600-32S

D-Link Building Networks for People

DXS-3600-32S: Power1, FAN1, MGMT, FAN2, Console, FAN3, Stack, SD Card Console

Refresh Interval: 10 secs

Logged in as: Administrator, admin-192.168.0.149 Logout

Fuzzy Search

- DXS-3600-32S
  - System
    - Port Configuration
    - System Log
      - System Log Settings
      - System Log Discriminator Setting
      - System Log Server Settings
      - System Log
      - System Attack Log**
    - Time Profile
  - Management
  - L2 Features
  - L3 Features
  - QoS
  - ACL
  - Security
  - Monitoring

### System Attack Log

System Attack Log

Clear Attack Log

Total Entries: 0

Index	Time	Level	Log Description
Total Entries: 0			

Browser: http://192.168.0.1/www/main.html?RpWebID=ZFPWiRnhN6Bjgy10ur5X DXS-3600-32S

D-Link Building Networks for People

DXS-3600-32S: Power1, FAN1, MGMT, FAN2, Console, FAN3, Stack, SD Card Console

Refresh Interval: 10 secs

Logged in as: Administrator, admin-192.168.0.149 Logout

Fuzzy Search

- DXS-3600-32S
  - System
    - Port Configuration
    - System Log
      - System Log Settings
      - System Log Discriminator Setting
      - System Log Server Settings
      - System Log
      - System Attack Log
      - Time Profile**
    - Time Profile
  - Management
  - L2 Features
  - L3 Features
  - QoS
  - ACL
  - Security
  - Monitoring

### Time Profile

Time Profile

Range Name: 32 chars  Daily

From: Week: Sun  To: Week: Sun  End Week Day

From: Time (HH:MM): 00:00 To: Time (HH:MM): 00:00

Range Name: 32 chars

Total Entries: 0

Range Name	Start Weekday	Start Time	End Weekday	End Time
Total Entries: 0				

<http://192.168.0.1/www/main.html?RpWebID=ZFPWiRnhN6Bjgy10ur5X>
DXS-3600-32S

**D-Link**  
 Building Networks for People

DXS-3600-32S  
 Power1 FAN1  
 Power2 FAN2  
 MGMT FAN3  
 Console SD  
 Stack

MGMT 1 2 3 4 5 6 7 8 9 10 11 12 13 14 15 16 17 18 19 20 21 22 23 24

Refresh Interval: 10 secs

Save Tools Logged in as: Administrator, admin-192.168.0.149 Logout

Fuzzy Search

- DXS-3600-32S
  - System
  - Management
    - User Accounts Settings
  - L2 Features
  - L3 Features
  - QoS
  - ACL
  - Security
  - Monitoring

**User Accounts Settings**

User Management Settings | Session Table

User Name: 32 chars Privilege (1-15):  
 Password Type: None Password:

Apply

Total Entries: 1

User Name	Privilege	Password	
admin	15	*****	Delete

1/1 | 1 | Go

<http://192.168.0.1/www/main.html?RpWebID=ZFPWiRnhN6Bjgy10ur5X>
DXS-3600-32S

**D-Link**  
 Building Networks for People

DXS-3600-32S  
 Power1 FAN1  
 Power2 FAN2  
 MGMT FAN3  
 Console SD  
 Stack

MGMT 1 2 3 4 5 6 7 8 9 10 11 12 13 14 15 16 17 18 19 20 21 22 23 24

Refresh Interval: 10 secs

Save Tools Logged in as: Administrator, admin-192.168.0.149 Logout

Fuzzy Search

- DXS-3600-32S
  - System
  - Management
    - User Accounts Settings
  - L2 Features
  - L3 Features
  - QoS
  - ACL
  - Security
  - Monitoring

**User Accounts Settings**

User Management Settings | Session Table

Total Entries: 1

Type	User Name	Privilege	Login Time	IP Address
console	anonymous	1	19M55S	

<http://192.168.0.1/www/main.html?RpWebID=ZFPWiRnhN6BJgy10ur5X>
DXS-3600-32S

Refresh Interval: 10 secs

Save Tools Logged in as: Administrator, admin-192.168.0.149 Logout

Fuzzy Search

- DXS-3600-32S
- System
- Management
- L2 Features
  - FDB
    - Static FDB
      - Unicast Static FDB**
      - Multicast Static FDB
    - MAC Address Table Settings
    - MAC Address Table
    - MAC Notification
  - VLAN
  - Spanning Tree
  - Link Aggregation
  - L2 Protocol Tunnel
  - L2 Multicast Control
- L3 Features
- QoS
- ACL
- Security
- Monitoring

### Unicast Static FDB

Unicast Static FDB

Port: 
 VLAN ID: 
 MAC Address: 
Apply

Total Entries: 0 Delete All

VLAN ID	MAC Address	Port

<http://192.168.0.1/www/main.html?RpWebID=ZFPWiRnhN6BJgy10ur5X>
DXS-3600-32S

Refresh Interval: 10 secs

Save Tools Logged in as: Administrator, admin-192.168.0.149 Logout

Fuzzy Search

- DXS-3600-32S
- System
- Management
- L2 Features
  - FDB
    - Static FDB
      - Unicast Static FDB
      - Multicast Static FDB**
    - MAC Address Table Settings
    - MAC Address Table
    - MAC Notification
  - VLAN
  - Spanning Tree
  - Link Aggregation
  - L2 Protocol Tunnel
  - L2 Multicast Control
- L3 Features
- QoS
- ACL
- Security
- Monitoring

### Multicast Static FDB

Multicast Static FDB

From Port: 
 To Port: 
 VLAN ID: 
 MAC Address: 
Apply

Total Entries: 0 Delete All

VLAN ID	MAC Address	Egress Ports

<http://192.168.0.1/www/main.html?RpWebID=ZFPWiRnhN6Bjgy10ur5X>
DXS-3600-32S

Refresh Interval: 10 secs

Save Tools Logged in as: Administrator, admin-192.168.0.149 Logout

Fuzzy Search

- DXS-3600-32S
- System
- Management
- L2 Features
  - FDB
    - Static FDB
      - Unicast Static FDB
      - Multicast Static FDB
      - MAC Address Table Settings**
      - MAC Address Table
      - MAC Notification
- VLAN
- Spanning Tree
- Link Aggregation
- L2 Protocol Tunnel
- L2 Multicast Control
- L3 Features
- QoS
- ACL
- Security
- Monitoring

### MAC Address Table Settings

**Global Settings**

Aging Time (0, 10-1000000)  sec

Aging Destination Hit  Enabled  Disabled Apply

**MAC Address Learning**

<http://192.168.0.1/www/main.html?RpWebID=ZFPWiRnhN6Bjgy10ur5X>
DXS-3600-32S

Refresh Interval: 10 secs

Save Tools Logged in as: Administrator, admin-192.168.0.149 Logout

Fuzzy Search

- DXS-3600-32S
- System
- Management
- L2 Features
  - FDB
    - Static FDB
      - Unicast Static FDB
      - Multicast Static FDB
      - MAC Address Table Settings
      - MAC Address Table**
      - MAC Notification
  - VLAN
  - Spanning Tree
  - Link Aggregation
  - L2 Protocol Tunnel
  - L2 Multicast Control
  - L3 Features
  - QoS
  - ACL
  - Security
  - Monitoring

### MAC Address Table

Port:  Clear Dynamic by Port Find

VLAN ID (1-4094):  Clear Dynamic by VLAN Find

MAC Address:  Clear Dynamic by MAC Find

Total Entries: 1 Clear All View All

VLAN ID	MAC Address	Type	Port
1	28-10-7B-7D-C7-60	Static	CPU

DXS-3600-32S

Refresh Interval: 10 secs

Logged in as: Administrator, admin-192.168.0.149

**MAC Notification**

**MAC Notification Settings** | **MAC Notification History**

**MAC Notification Global Settings**

MAC Address Notification:  Enabled  Disabled

Interval (1-2147483647):  sec

History Size (0-500):

MAC Notification Trap State:  Enabled  Disabled

Apply

From Port:  To Port:  Added Trap:  Removed Trap:

Apply

Port	Added Trap	Removed Trap
eth1/0/1	Disabled	Disabled
eth1/0/2	Disabled	Disabled
eth1/0/3	Disabled	Disabled
eth1/0/4	Disabled	Disabled
eth1/0/5	Disabled	Disabled
eth1/0/6	Disabled	Disabled

DXS-3600-32S

Refresh Interval: 10 secs

Logged in as: Administrator, admin-192.168.0.149

**802.1Q VLAN**

**802.1Q VLAN**

VLAN ID List:  Apply Delete

Find VLAN


VLAN ID (1-4094):  Find View All

Total Entries: 1

VLAN ID	VLAN Name	Tagged Member Ports	Untagged Member Ports	VLAN Type
1	default		1/0/1-1/0/24	default

1/1 < < 1 > > Go

<http://192.168.0.1/www/main.html?RpWebID=ZFPWiRnhN6BJgy10ur5X>
DXS-3600-32S


Refresh Interval: 10 secs

Save Tools Logged in as: Administrator, admin-192.168.0.149 Logout

Fuzzy Search

- DXS-3600-32S
- System
- Management
- L2 Features
  - FDB
  - VLAN
    - 802.1Q VLAN
    - 802.1v Protocol VLAN
      - Protocol VLAN Profile**
      - Protocol VLAN Profile Inte
  - GVRP
  - MAC VLAN
  - VLAN Interface
  - Subnet VLAN
  - Private VLAN
- Spanning Tree
  - Link Aggregation
  - L2 Protocol Tunnel
  - L2 Multicast Control
- L3 Features
  - QoS
  - ACL
  - Security
  - Monitoring

### Protocol VLAN Profile


Add Protocol VLAN Profile

Profile ID (1-16) 
 Frame Type Ethernet2
 Ether Type (0x0-0xFFFF) 0x 
Apply

Total Entries: 0

Profile ID	Frame Type	Ether Type

<http://192.168.0.1/www/main.html?RpWebID=ZFPWiRnhN6BJgy10ur5X>
DXS-3600-32S


Refresh Interval: 10 secs

Save Tools Logged in as: Administrator, admin-192.168.0.149 Logout

Fuzzy Search

- DXS-3600-32S
- System
- Management
- L2 Features
  - FDB
  - VLAN
    - 802.1Q VLAN
    - 802.1v Protocol VLAN
      - Protocol VLAN Profile
      - Protocol VLAN Profile Inte**
  - GVRP
  - MAC VLAN
  - VLAN Interface
  - Subnet VLAN
  - Private VLAN
- Spanning Tree
  - Link Aggregation
  - L2 Protocol Tunnel
  - L2 Multicast Control
- L3 Features
  - QoS
  - ACL
  - Security
  - Monitoring

### Protocol VLAN Profile Interface

Add New Protocol VLAN Interface

Port eth 1/0/1
 Profile ID 
 VLAN ID (1-4094) 
 Priority 0
Apply

Port	Profile ID	VLAN ID	Priority

http://192.168.0.1/www/main.html?RpWebID=ZFPWiRnhN6BJgy10ur5X DXS-3600-32S

**D-Link**  
Building Networks for People

DXS-3600-32S  
Power1 FAN1  
Power2 FAN2  
MGMT MGMT  
Console FAN3  
SD

Refresh Interval: 10 secs

Save Tools Logged in as: Administrator, admin-192.168.0.149 Logout

Fuzzy Search

- DXS-3600-32S
  - System
  - Management
  - L2 Features
    - FDB
    - VLAN
      - 802.1Q VLAN
      - 802.1v Protocol VLAN
        - GVRP Global**
        - GVRP Port
        - GVRP Advertise VLAN
        - GVRP Forbidden VLAN
        - GVRP Statistics Table
      - MAC VLAN
      - VLAN Interface
      - Subnet VLAN
      - Private VLAN
    - Spanning Tree
    - Link Aggregation
    - L2 Protocol Tunnel
    - L2 Multicast Control
  - L3 Features
  - QoS

### GVRP Global

GVRP Global

Global GVRP State  Enabled  Disabled

Dynamic VLAN Creation  Enabled  Disabled

NNI BPDU Address

Apply

http://192.168.0.1/www/main.html?RpWebID=ZFPWiRnhN6BJgy10ur5X DXS-3600-32S

**D-Link**  
Building Networks for People

DXS-3600-32S  
Power1 FAN1  
Power2 FAN2  
MGMT MGMT  
Console FAN3  
SD

Refresh Interval: 10 secs

Save Tools Logged in as: Administrator, admin-192.168.0.149 Logout

Fuzzy Search

- DXS-3600-32S
  - System
  - Management
  - L2 Features
    - FDB
    - VLAN
      - 802.1Q VLAN
      - 802.1v Protocol VLAN
        - GVRP Global
        - GVRP Port**
        - GVRP Advertise VLAN
        - GVRP Forbidden VLAN
        - GVRP Statistics Table
      - MAC VLAN
      - VLAN Interface
      - Subnet VLAN
      - Private VLAN
    - Spanning Tree
    - Link Aggregation
    - L2 Protocol Tunnel
    - L2 Multicast Control
  - L3 Features
  - QoS

### GVRP Port

GVRP Port

From Port: eth1/0/1 To Port: eth1/0/1 GVRP Status: Disabled Join Time (10-10000): 20 centiseconds Leave Time (10-10000): 60 centiseconds Leave All Time (10-10000): 1000 centiseconds

**Note:**  
The Leave Time should be no less than 3 \* Join Time.  
Leave All Time should be greater than Leave Time.

Port	GVRP Status	Join Time	Leave Time	Leave All Time
eth1/0/1	Disabled	20	60	1000
eth1/0/2	Disabled	20	60	1000
eth1/0/3	Disabled	20	60	1000
eth1/0/4	Disabled	20	60	1000
eth1/0/5	Disabled	20	60	1000
eth1/0/6	Disabled	20	60	1000
eth1/0/7	Disabled	20	60	1000
eth1/0/8	Disabled	20	60	1000
eth1/0/9	Disabled	20	60	1000
eth1/0/10	Disabled	20	60	1000
eth1/0/11	Disabled	20	60	1000

Apply



<http://192.168.0.1/www/main.html?RpWebID=ZFPWiRnhN6BJgy10ur5X>
DXS-3600-32S

Refresh Interval: 10 secs

Save Tools Logged in as: Administrator, admin-192.168.0.149 Logout

Fuzzy Search

- DXS-3600-32S
- System
- Management
- L2 Features
  - FDB
  - VLAN
    - 802.1Q VLAN
    - 802.1v Protocol VLAN
    - GVRP
      - GVRP Global
      - GVRP Port
      - GVRP Advertise VLAN**
      - GVRP Forbidden VLAN
      - GVRP Statistics Table
    - MAC VLAN
    - VLAN Interface
    - Subnet VLAN
    - Private VLAN
  - Spanning Tree
  - Link Aggregation
  - L2 Protocol Tunnel
  - L2 Multicast Control
- L3 Features
- QoS

### GVRP Advertise VLAN

GVRP Advertise VLAN

From Port:  To Port:

Advertise VID List:

Port	Advertise VLAN
eth1/0/1	
eth1/0/2	
eth1/0/3	
eth1/0/4	
eth1/0/5	
eth1/0/6	
eth1/0/7	
eth1/0/8	
eth1/0/9	
eth1/0/10	
eth1/0/11	
eth1/0/12	
eth1/0/13	

<http://192.168.0.1/www/main.html?RpWebID=ZFPWiRnhN6BJgy10ur5X>
DXS-3600-32S

Refresh Interval: 10 secs

Save Tools Logged in as: Administrator, admin-192.168.0.149 Logout

Fuzzy Search

- DXS-3600-32S
- System
- Management
- L2 Features
  - FDB
  - VLAN
    - 802.1Q VLAN
    - 802.1v Protocol VLAN
    - GVRP
      - GVRP Global
      - GVRP Port
      - GVRP Advertise VLAN
      - GVRP Forbidden VLAN**
      - GVRP Statistics Table
    - MAC VLAN
    - VLAN Interface
    - Subnet VLAN
    - Private VLAN
  - Spanning Tree
  - Link Aggregation
  - L2 Protocol Tunnel
  - L2 Multicast Control
- L3 Features
- QoS

### GVRP Forbidden VLAN

GVRP Forbidden VLAN

Unit:  From Port:  To Port:

Forbidden VID List:

Port	Forbidden VLAN
eth1/0/1	
eth1/0/2	
eth1/0/3	
eth1/0/4	
eth1/0/5	
eth1/0/6	
eth1/0/7	
eth1/0/8	
eth1/0/9	
eth1/0/10	
eth1/0/11	
eth1/0/12	
eth1/0/13	

<http://192.168.0.1/www/main.html?RpWebID=ZFPWiRnhN6BJgy10ur5X>
DXS-3600-32S

DXS-3600-32S  
Power1 FAN1  
Power2 FAN2  
MGMT FAN3  
Console SD
Refresh Interval  
10 secs

Save Tools Logged in as: Administrator, admin-192.168.0.149 Logout

Fuzzy Search

- DXS-3600-32S
- System
- Management
- L2 Features
  - FDB
  - VLAN
    - 802.1Q VLAN
    - 802.1v Protocol VLAN
    - GVRP
      - GVRP Global
      - GVRP Port
      - GVRP Advertise VLAN
      - GVRP Forbidden VLAN
      - GVRP Statistics Table**
    - MAC VLAN
    - VLAN Interface
    - Subnet VLAN
    - Private VLAN
  - Spanning Tree
  - Link Aggregation
  - L2 Protocol Tunnel
  - L2 Multicast Control
- L3 Features
- QoS

### GVRP Statistics Table

GVRP Statistics Table

Port:

Port		JoinEmpty	JoinIn	LeaveEmpty	LeaveIn	LeaveAll	Empty
eth1/0/1	RX	0	0	0	0	0	0
	TX	0	0	0	0	0	0
eth1/0/2	RX	0	0	0	0	0	0
	TX	0	0	0	0	0	0
eth1/0/3	RX	0	0	0	0	0	0
	TX	0	0	0	0	0	0
eth1/0/4	RX	0	0	0	0	0	0
	TX	0	0	0	0	0	0
eth1/0/5	RX	0	0	0	0	0	0
	TX	0	0	0	0	0	0
eth1/0/6	RX	0	0	0	0	0	0
	TX	0	0	0	0	0	0
eth1/0/7	RX	0	0	0	0	0	0
	TX	0	0	0	0	0	0

<http://192.168.0.1/www/main.html?RpWebID=ZFPWiRnhN6BJgy10ur5X>
DXS-3600-32S

DXS-3600-32S  
Power1 FAN1  
Power2 FAN2  
MGMT FAN3  
Console SD
Refresh Interval  
10 secs

Save Tools Logged in as: Administrator, admin-192.168.0.149 Logout

Fuzzy Search

- DXS-3600-32S
- System
- Management
- L2 Features
  - FDB
  - VLAN
    - 802.1Q VLAN
    - 802.1v Protocol VLAN
    - GVRP
    - MAC VLAN**
    - VLAN Interface
    - Subnet VLAN
    - Private VLAN
  - Spanning Tree
  - Link Aggregation
  - L2 Protocol Tunnel
  - L2 Multicast Control
- L3 Features
- QoS
- ACL
- Security
- Monitoring

### MAC VLAN

MAC VLAN

MAC Address: 
 VLAN ID (1-4094): 
 Priority:

Total Entries: 0

MAC Address	VLAN ID	Priority	Status

http://192.168.0.1/www/main.html?RpWebID=ZFPWiRnhN6BJgy10ur5X DXS-3600-32S

**D-Link**  
Building Networks for People

DXS-3600-32S  
Power1 FAN1 MGMT 1 2 3 4 5 6 7 8 9 10 11 12 13 14 15 16 17 18 19 20 21 22 23 24  
Power2 FAN2 FAN3  
Console SD

Refresh Interval: 10 secs

Save Tools Logged in as: Administrator, admin-192.168.0.149 Logout

Fuzzy Search

- DXS-3600-32S
  - System
  - Management
  - L2 Features
    - FDB
    - VLAN
      - 802.1Q VLAN
      - 802.1v Protocol VLAN
      - GVRP
      - MAC VLAN
      - VLAN Interface**
      - Subnet VLAN
      - Private VLAN
    - Spanning Tree
    - Link Aggregation
    - L2 Protocol Tunnel
    - L2 Multicast Control
  - L3 Features
  - QoS
  - ACL
  - Security
  - Monitoring

### VLAN Interface

VLAN Interface

Port	VLAN Mode	Ingress Checking	Acceptable Frame Type		
eth1/0/1	Hybrid	Enabled	Admit-All	VLAN Detail	Edit
eth1/0/2	Hybrid	Enabled	Admit-All	VLAN Detail	Edit
eth1/0/3	Hybrid	Enabled	Admit-All	VLAN Detail	Edit
eth1/0/4	Hybrid	Enabled	Admit-All	VLAN Detail	Edit
eth1/0/5	Hybrid	Enabled	Admit-All	VLAN Detail	Edit
eth1/0/6	Hybrid	Enabled	Admit-All	VLAN Detail	Edit
eth1/0/7	Hybrid	Enabled	Admit-All	VLAN Detail	Edit
eth1/0/8	Hybrid	Enabled	Admit-All	VLAN Detail	Edit
eth1/0/9	Hybrid	Enabled	Admit-All	VLAN Detail	Edit
eth1/0/10	Hybrid	Enabled	Admit-All	VLAN Detail	Edit
eth1/0/11	Hybrid	Enabled	Admit-All	VLAN Detail	Edit
eth1/0/12	Hybrid	Enabled	Admit-All	VLAN Detail	Edit
eth1/0/13	Hybrid	Enabled	Admit-All	VLAN Detail	Edit
eth1/0/14	Hybrid	Enabled	Admit-All	VLAN Detail	Edit
eth1/0/15	Hybrid	Enabled	Admit-All	VLAN Detail	Edit
eth1/0/16	Hybrid	Enabled	Admit-All	VLAN Detail	Edit

http://192.168.0.1/www/main.html?RpWebID=ZFPWiRnhN6BJgy10ur5X DXS-3600-32S

**D-Link**  
Building Networks for People

DXS-3600-32S  
Power1 FAN1 MGMT 1 2 3 4 5 6 7 8 9 10 11 12 13 14 15 16 17 18 19 20 21 22 23 24  
Power2 FAN2 FAN3  
Console SD

Refresh Interval: 10 secs

Save Tools Logged in as: Administrator, admin-192.168.0.149 Logout

Fuzzy Search

- DXS-3600-32S
  - System
  - Management
  - L2 Features
    - FDB
    - VLAN
      - 802.1Q VLAN
      - 802.1v Protocol VLAN
      - GVRP
      - MAC VLAN
      - VLAN Interface**
      - Subnet VLAN
      - Private VLAN
    - Spanning Tree
    - Link Aggregation
    - L2 Protocol Tunnel
    - L2 Multicast Control
  - L3 Features
  - QoS
  - ACL
  - Security
  - Monitoring

### VLAN Interface Information

VLAN Interface Information

Port	eth1/0/1
VLAN Mode	Hybrid
Native VLAN	1
Hybrid Untagged VLAN	1
Hybrid Tagged VLAN	
Dynamic Tagged VLAN	
VLAN Precedence	MAC-VLAN
Ingress Checking	Enabled
Acceptable Frame Type	Admit-All

<< Back

<http://192.168.0.1/www/main.html?RpWebID=ZFPWiRnhN6BJgy10ur5X>
DXS-3600-32S

Refresh Interval: 10 secs

Save Tools
Logged in as: Administrator, admin-192.168.0.149
Logout

Fuzzy Search

- DXS-3600-32S
- System
- Management
- L2 Features
  - FDB
  - VLAN
    - 802.1Q VLAN
    - 802.1v Protocol VLAN
    - GVRP
    - MAC VLAN
    - VLAN Interface**
    - Subnet VLAN
    - Private VLAN
  - Spanning Tree
  - Link Aggregation
  - L2 Protocol Tunnel
  - L2 Multicast Control
- L3 Features
- QoS
- ACL
- Security
- Monitoring

### Configure VLAN Interface

Configure VLAN Interface

Port:

VLAN Mode:

Acceptable Frame:

Ingress Checking:

VLAN Precedence:

Native VLAN:  Native VLAN

VLAN ID (1-4094):

Action:

Add Mode:  Untagged  Tagged

Allowed VLAN Range:

<http://192.168.0.1/www/main.html?RpWebID=ZFPWiRnhN6BJgy10ur5X>
DXS-3600-32S

Refresh Interval: 10 secs

Save Tools
Logged in as: Administrator, admin-192.168.0.149
Logout

Fuzzy Search

- DXS-3600-32S
- System
- Management
- L2 Features
  - FDB
  - VLAN
    - 802.1Q VLAN
    - 802.1v Protocol VLAN
    - GVRP
    - MAC VLAN
    - VLAN Interface**
    - Subnet VLAN
    - Private VLAN
  - Spanning Tree
  - Link Aggregation
  - L2 Protocol Tunnel
  - L2 Multicast Control
- L3 Features
- QoS
- ACL
- Security
- Monitoring

### Configure VLAN Interface

Configure VLAN Interface

Port:

VLAN Mode:

Acceptable Frame:

Ingress Checking:  Enabled  Disabled

VLAN Precedence:

Native VLAN:  Native VLAN

VLAN ID (1-4094):

Action:

Add Mode:  Untagged  Tagged

Allowed VLAN Range:

<http://192.168.0.1/www/main.html?RpWebID=ZFPWiRnhN6BJgy10ur5X>
DXS-3600-32S

Refresh Interval: 10 secs

Save Tools
Logged in as: Administrator, admin-192.168.0.149 [Logout](#)

Fuzzy Search

- DXS-3600-32S
- System
- Management
- L2 Features
  - FDB
  - VLAN
    - 802.1Q VLAN
    - 802.1v Protocol VLAN
    - GVRP
    - MAC VLAN
    - VLAN Interface**
    - Subnet VLAN
    - Private VLAN
  - Spanning Tree
  - Link Aggregation
  - L2 Protocol Tunnel
  - L2 Multicast Control
- L3 Features
- QoS
- ACL
- Security
- Monitoring

### Configure VLAN Interface

Configure VLAN Interface

Port: eth1/0/1

VLAN Mode: Hybrid

Acceptable Frame: Admit All

Ingress Checking:  Enabled  Disabled

VLAN Precedence: **Mac-based VLAN**  
Subnet-based VLAN

Native VLAN:

VLAN ID (1-4094):

Action: **Add**

Add Mode:  Untagged  Tagged

Allowed VLAN Range:

[<<Back](#) [Apply](#)

<http://192.168.0.1/www/main.html?RpWebID=ZFPWiRnhN6BJgy10ur5X>
DXS-3600-32S

Refresh Interval: 10 secs

Save Tools
Logged in as: Administrator, admin-192.168.0.149 [Logout](#)

Fuzzy Search

- DXS-3600-32S
- System
- Management
- L2 Features
  - FDB
  - VLAN
    - 802.1Q VLAN
    - 802.1v Protocol VLAN
    - GVRP
    - MAC VLAN
    - VLAN Interface**
    - Subnet VLAN
    - Private VLAN
  - Spanning Tree
  - Link Aggregation
  - L2 Protocol Tunnel
  - L2 Multicast Control
- L3 Features
- QoS
- ACL
- Security
- Monitoring

### Configure VLAN Interface

Configure VLAN Interface

Port: eth1/0/1

VLAN Mode: Hybrid

Acceptable Frame: Admit All

Ingress Checking:  Enabled  Disabled

VLAN Precedence: **Mac-based VLAN**

Native VLAN:  Native VLAN

VLAN ID (1-4094):

Action: **Add**  
Remove  
Tagged  
Untagged

Add Mode:

Allowed VLAN Range:

[<<Back](#) [Apply](#)

DXS-3600-32S  
Building Networks for People

Refresh Interval: 10 secs

Save Tools | Logged in as: Administrator, admin-192.168.0.149 | Logout

Fuzzy Search

- DXS-3600-32S
  - System
  - Management
  - L2 Features
    - FDB
    - VLAN
      - 802.1Q VLAN
      - 802.1v Protocol VLAN
      - GVRP
      - MAC VLAN
      - VLAN Interface
        - Subnet VLAN**
        - Private VLAN
      - Spanning Tree
      - Link Aggregation
      - L2 Protocol Tunnel
      - L2 Multicast Control
    - L3 Features
    - QoS
    - ACL
    - Security
    - Monitoring

### Subnet VLAN

Subnet VLAN

IPv4 Network Prefix/Prefix Length: 20.0.1.0/8
  IPv6 Network Prefix/Prefix Length: 8FFE::/64

VLAN ID (1-4094):  Priority:

Total Entries: 0

Subnet	VLAN ID	Priority
--------	---------	----------

DXS-3600-32S  
Building Networks for People

Refresh Interval: 10 secs

Save Tools | Logged in as: Administrator, admin-192.168.0.149 | Logout

Fuzzy Search

- DXS-3600-32S
  - System
  - Management
  - L2 Features
    - FDB
    - VLAN
      - 802.1Q VLAN
      - 802.1v Protocol VLAN
      - GVRP
      - MAC VLAN
      - VLAN Interface
        - Subnet VLAN
        - Private VLAN**
      - Spanning Tree
      - Link Aggregation
      - L2 Protocol Tunnel
      - L2 Multicast Control
    - L3 Features
    - QoS
    - ACL
    - Security
    - Monitoring

### Private VLAN

Private VLAN

VLAN ID List:  State:  Type:

Private VLAN Association

VLAN ID List:  Action:  Secondary VLAN ID List:

Private VLAN Host Association

From Port:  To Port:  Primary VLAN ID:  Secondary VLAN ID:   Remove Association

Private VLAN Mapping

From Port:  To Port:  Primary VLAN ID:  Action:  Secondary VLAN ID List:   Remove Mapping

Total Entries: 0

Primary VLAN	Secondary VLAN	Type	Interface
--------------	----------------	------	-----------

DXS-3600-32S

Refresh Interval: 10 secs

Logged in as: Administrator, admin-192.168.0.149

**Spanning Tree Global Settings**

**Spanning Tree State**  
 Spanning Tree State:  Disabled  Enabled Apply

**STP Traps**  
 STP New Root Trap:  Disabled  Enabled  
 STP Topology Change Trap:  Disabled  Enabled Apply

**Spanning Tree Mode**  
 Spanning Tree Mode: **MSTP** Apply

**Spanning Tree Priority**  
 Priority (0-61440): 32768 Apply

**Spanning Tree Configuration**  
 Bridge Max Age (6-40): 20 sec Bridge Hello Time (1-2): 2 sec  
 Bridge Forward Time (4-30): 15 sec TX Hold Count (1-10): 6 times  
 Max Hops (1-40): 20 times NNI BPDU Address: Dot1d Apply

DXS-3600-32S

Refresh Interval: 10 secs

Logged in as: Administrator, admin-192.168.0.149

**Spanning Tree Global Settings**

**Spanning Tree State**  
 Spanning Tree State:  Disabled  Enabled Apply

**STP Traps**  
 STP New Root Trap:  Disabled  Enabled  
 STP Topology Change Trap:  Disabled  Enabled Apply

**Spanning Tree Mode**  
 Spanning Tree Mode: **0** Apply

**Spanning Tree Priority**  
 Priority (0-61440): **32768** Apply

**Spanning Tree Configuration**  
 Bridge Max Age (6-40): 20 sec Bridge Hello Time (1-2): 2 sec  
 Bridge Forward Time (4-30): 15 sec TX Hold Count (1-10): 6 times  
 Max Hops (1-40): 20 times NNI BPDU Address: Dot1d Apply

DXS-3600-32S

Refresh Interval: 10 secs

Logged in as: Administrator, admin-192.168.0.149

### Spanning Tree Global Settings

**Spanning Tree State**  
 Spanning Tree State:  Disabled  Enabled Apply

**STP Traps**  
 STP New Root Trap:  Disabled  Enabled  
 STP Topology Change Trap:  Disabled  Enabled Apply

**Spanning Tree Mode**  
 Spanning Tree Mode: RSTP Apply

**Spanning Tree Priority**  
 Priority (0-61440): 32768 Apply

**Spanning Tree Configuration**

Bridge Max Age (6-40):	<input type="text" value="20"/> sec	Bridge Hello Time (1-2):	<input type="text" value="2"/> sec
Bridge Forward Time (4-30):	<input type="text" value="15"/> sec	TX Hold Count (1-10):	<input type="text" value="6"/> times
Max Hops (1-40):	<input type="text" value="20"/> times	NNI BPDU Address:	<input type="text" value="Dot1d"/> <input type="text" value="Dot1ad"/>

Apply

DXS-3600-32S

Refresh Interval: 10 secs

Logged in as: Administrator, admin-192.168.0.149

### STP Port Settings

**STP Port Settings**

From Port: eth1/0/1 To Port: eth1/0/1

Cost (1-200000000, 0=Auto):  State: Enabled Guard Root: Disabled

Link Type: Auto Port Fast: Network TCN Filter: Disabled

BPDU Forward: Disabled Priority: 128 Hello Time (1-2):  sec Apply

Port	State	Cost	Guard Root	Link Type	Port Fast	TCN Filter	BPDU Forward	Priority
eth1/0/1	Enabled	0/200000	Disabled	auto/p2p	auto/non-edge	Disabled	Disabled	128 /
eth1/0/2	Enabled	0/200000	Disabled	auto/p2p	auto/non-edge	Disabled	Disabled	128 /
eth1/0/3	Enabled	0/200000	Disabled	auto/p2p	auto/non-edge	Disabled	Disabled	128 /
eth1/0/4	Enabled	0/200000	Disabled	auto/p2p	auto/non-edge	Disabled	Disabled	128 /
eth1/0/5	Enabled	0/200000	Disabled	auto/p2p	auto/non-edge	Disabled	Disabled	128 /
eth1/0/6	Enabled	0/200000	Disabled	auto/p2p	auto/non-edge	Disabled	Disabled	128 /
eth1/0/7	Enabled	0/200000	Disabled	auto/p2p	auto/non-edge	Disabled	Disabled	128 /
eth1/0/8	Enabled	0/200000	Disabled	auto/p2p	auto/non-edge	Disabled	Disabled	128 /
eth1/0/9	Enabled	0/200000	Disabled	auto/p2p	auto/non-edge	Disabled	Disabled	128 /
eth1/0/10	Enabled	0/200000	Disabled	auto/p2p	auto/non-edge	Disabled	Disabled	128 /
eth1/0/11	Enabled	0/200000	Disabled	auto/p2p	auto/non-edge	Disabled	Disabled	128 /
eth1/0/12	Enabled	0/200000	Disabled	auto/p2p	auto/non-edge	Disabled	Disabled	128 /



DXS-3600-32S

Refresh Interval: 10 secs

Logged in as: Administrator, admin-192.168.0.149

**MST Configuration Settings**

MST Configuration Settings

Configuration Name: 28:10:7B:7D:C7:60

Revision Level (0-65535): 0

Digest: AC36177F50283CD4B83821D8AB26DE62

Apply

Private VLAN Synchronize

Private VLAN Synchronize

Apply

Instance ID Settings

Instance ID (1-64):

Action: Add VID, Remove VID

VID List

Apply

Total Entries: 1

Instance ID	VID List	Edit	Delete
CIST	1-4094		

1/1

DXS-3600-32S

Refresh Interval: 10 secs

Logged in as: Administrator, admin-192.168.0.149

**STP Instance**

Total Entries: 1

Instance	Instance State	Instance Priority	Edit
CIST	Disabled	32768(32768 sysid 0)	

1/1

Instance CIST

CIST Global Info[Mode RSTP]	
Bridge Address	28-10-7B-7D-C7-60
Designated Root Address / Priority	00-00-00-00-00-00 / 0
Regional Root Bridge Address / Priority	00-00-00-00-00-00 / 0
Designated Bridge Address / Priority	00-00-00-00-00-00 / 0

DXS-3600-32S  
Power1 FAN1 MGMT 1 2 3 4 5 6 7 8 9 10 11 12 13 14 15 16 17 18 19 20 21 22 23 24  
Power2 FAN2 Console SD

Refresh Interval: 10 secs

Logged in as: Administrator, admin-192.168.0.149 Logout

**MSTP Port Information**

MSTP Port Settings

Port: eth1/0/1

eth1/0/1 Settings

Instance ID	Cost	Priority	Status	Role

DXS-3600-32S  
Power1 FAN1 MGMT 1 2 3 4 5 6 7 8 9 10 11 12 13 14 15 16 17 18 19 20 21 22 23 24  
Power2 FAN2 Console SD

Refresh Interval: 10 secs

Logged in as: Administrator, admin-192.168.0.149 Logout

**Link Aggregation**

System Priority (1-65535): 32768  
Load Balance Algorithm: Source Destination MAC  
System ID: 32768,28-10-7B-7D-C7-60

Trunking Information

From Port: eth1/0/1 To Port: eth1/0/1 Channel Group (1-16):  Mode: On

Note: Each Channel Group supports up to 12 member ports.

Total Entries: 0

Channel Group	Protocol	Max Ports	Member Number	Member Ports

Browser: http://192.168.0.1/www/main.html?RpWebID=ZFPWiRnhN6Bjgy10ur5X DXS-3600-32S

Refresh Interval: 10 secs

Logged in as: Administrator, admin-192.168.0.149 Logout

### Link Aggregation

System Priority (1-65535):  **Source MAC**  
 Load Balance Algorithm:  **Destination MAC**  
 System ID:  **Source IP**  
 **Destination IP**  
 **Source L4 Port**  
 **Destination L4 Port**

Trunking Information

From Port:  To Port:  Mode:

Note: Each Channel Group supports up to 12 member ports.

Total Entries: 0

Channel Group	Protocol	Max Ports	Member Number	Member Ports
Total Entries: 0				

Browser: http://192.168.0.1/www/main.html?RpWebID=ZFPWiRnhN6Bjgy10ur5X DXS-3600-32S

Refresh Interval: 10 secs

Logged in as: Administrator, admin-192.168.0.149 Logout

### L2 Protocol Tunnel

**L2 Protocol Tunnel Global Setting**

CoS for Encapsulated Packets:   Default  
 Drop Threshold (100-20000):   Default

**L2 Protocol Tunnel Port Setting**

Protocol	Drop Counter
GVRP	0
STP	0
01-00-0C-CC-CC-CC	0
01-00-0C-CC-CC-CD	0

Browser address bar: http://192.168.0.1/www/main.html?RpWebID=ZFPWiRnhN6Bjgy10ur5X

Page Title: DXS-3600-32S

Refresh Interval: 10 secs

Logged in as: Administrator, admin-192.168.0.149

**L2 Protocol Tunnel**

**L2 Protocol Tunnel Port Setting**

From Port: eth1/0/1 | To Port: eth1/0/1 | Action: Add | Type: None  
 Tunneled Protocol: GVRP | Protocol MAC: 01-00-0C-CC-CC-CC | Threshold: [ ]

Apply | Clear All

Port	Protocol	Shutdown Threshold	Drop Threshold	Encapsulation Counter	Decapsulation Counter	Drop Counter

Browser address bar: http://192.168.0.1/www/main.html?RpWebID=ZFPWiRnhN6Bjgy10ur5X

Page Title: DXS-3600-32S

Refresh Interval: 10 secs

Logged in as: Administrator, admin-192.168.0.149

**L2 Protocol Tunnel**

**L2 Protocol Tunnel Port Setting**

From Port: eth1/0/1 | To Port: eth1/0/1 | Action: Add | Type: None  
 Tunneled Protocol: GVRP | Protocol MAC: 01-00-0C-CC-CC-CC | Threshold: [ ]

Apply | Clear All

Port	Protocol	Shutdown Threshold	Drop Threshold	Encapsulation Counter	Decapsulation Counter	Drop Counter

<http://192.168.0.1/www/main.html?RpWebID=ZFPWiRnhN6Bjgy10ur5X>
DXS-3600-32S

DXS-3600-32S  
Power1 FAN1  
Power2 FAN2  
MGMT FAN3  
Console SD
Refresh Interval  
10 secs

Save Tools Logged in as: Administrator, admin-192.168.0.149 Logout

Fuzzy Search

- DXS-3600-32S
- System
- Management
- L2 Features
  - FDB
  - VLAN
  - Spanning Tree
  - Link Aggregation
  - L2 Protocol Tunnel
  - L2 Multicast Control
    - Multicast Filtering**
- L3 Features
- QoS
- ACL
- Security
- Monitoring

### Multicast Filtering

Multicast Filtering

VLAN ID List:  Multicast Filter Mode: Forward Unregistered  
Forward All  
Filter Unregistered Apply

Total Entries: 1

VLAN	Multicast Filter Mode
default	Forward Unregistered Groups

1/1 < > 1 > > Go

<http://192.168.0.1/www/main.html?RpWebID=ZFPWiRnhN6Bjgy10ur5X>
DXS-3600-32S

DXS-3600-32S  
Power1 FAN1  
Power2 FAN2  
MGMT FAN3  
Console SD
Refresh Interval  
10 secs

Save Tools Logged in as: Administrator, admin-192.168.0.149 Logout

Fuzzy Search

- DXS-3600-32S
- System
- Management
- L2 Features
- L3 Features
  - ARP**
    - ARP Aging Time**
    - Static ARP
    - Proxy ARP
    - ARP Table
    - Gratuitous ARP
  - IPv4 Interface
  - IPv4 Static/Default Route
  - IPv4 Route Table
  - IPv6 Interface
  - IPv6 Static/Default Route
  - IPv6 Route Table
- QoS
- ACL
- Security
- Monitoring

### ARP Aging Time

ARP Aging Time

Total Entries: 1

Interface Name	Timeout (min)	
vian1	20	Edit

1/1 < > 1 > > Go

<http://192.168.0.1/www/main.html?RpWebID=ZFPWiRnhN6Bjgy10ur5X>
DXS-3600-32S

Refresh Interval: 10 secs

Save Tools Logged in as: Administrator, admin-192.168.0.149 Logout

Fuzzy Search

- DXS-3600-32S
- System
- Management
- L2 Features
- L3 Features
  - ARP
    - ARP Aging Time
    - Static ARP**
    - Proxy ARP
    - ARP Table
  - Gratuitous ARP
  - IP4 Interface
    - IP4 Static/Default Route
    - IP4 Route Table
  - IP6 Interface
    - IP6 Static/Default Route
    - IP6 Route Table
- QoS
- ACL
- Security
- Monitoring

### Static ARP

Static ARP

VRF Name:  IP Address:  Hardware Address:  Apply

VRF Name:  Find

Total Entries: 1

VRF Name	Interface Name	IP Address	Hardware Address	Age	Type	
	mgmt_ipif	192.168.0.1	28-10-7B-7D-C7-60	forever		<input type="button" value="Edit"/> <input type="button" value="Delete"/>

1/1

<http://192.168.0.1/www/main.html?RpWebID=ZFPWiRnhN6Bjgy10ur5X>
DXS-3600-32S

Refresh Interval: 10 secs

Save Tools Logged in as: Administrator, admin-192.168.0.149 Logout

Fuzzy Search

- DXS-3600-32S
- System
- Management
- L2 Features
- L3 Features
  - ARP
    - ARP Aging Time
    - Static ARP
    - Proxy ARP**
    - ARP Table
  - Gratuitous ARP
  - IP4 Interface
    - IP4 Static/Default Route
    - IP4 Route Table
  - IP6 Interface
    - IP6 Static/Default Route
    - IP6 Route Table
- QoS
- ACL
- Security
- Monitoring

### Proxy ARP

Proxy ARP

Total Entries: 1

Interface Name	Proxy ARP State	Local Proxy ARP State	
vian1	Disabled	Disabled	<input type="button" value="Edit"/>

1/1

<http://192.168.0.1/www/main.html?RpWebID=ZFPWiRnhN6Bjgy10ur5X>
DXS-3600-32S

Refresh Interval: 10 secs

Save Tools Logged in as: Administrator, admin-192.168.0.149 Logout

Fuzzy Search

- DXS-3600-32S
- System
- Management
- L2 Features
- L3 Features
  - ARP
    - ARP Aging Time
    - Static ARP
    - Proxy ARP
    - ARP Table**
    - Gratuitous ARP
    - IPv4 Interface
    - IPv4 Static/Default Route
    - IPv4 Route Table
    - IPv6 Interface
    - IPv6 Static/Default Route
    - IPv6 Route Table
  - QoS
  - ACL
  - Security
  - Monitoring

### ARP Table

ARP Search

VRF Name:

Interface VLAN (1-4094) 
 IP Address  MASK Address

Hardware Address 
 Type 
 Mgmt

Total Entries: 24

Interface Name	IP Address	MAC Address	Age (min)	Type	
mgmt_ipif	192.168.0.1	28-10-7B-7D-C7-60	forever		<input type="button" value="Delete"/>
mgmt_ipif	192.168.0.110	00-50-56-8C-00-05	240		<input type="button" value="Delete"/>
mgmt_ipif	192.168.0.119	9C-8E-99-85-B4-64	240		<input type="button" value="Delete"/>
mgmt_ipif	192.168.0.120	00-21-99-9C-B7-95	240		<input type="button" value="Delete"/>
mgmt_ipif	192.168.0.149	64-31-50-83-AE-94	240		<input type="button" value="Delete"/>
mgmt_ipif	192.168.0.151	18-03-73-AF-06-4B	240		<input type="button" value="Delete"/>
mgmt_ipif	192.168.0.165	00-50-56-8C-00-09	240		<input type="button" value="Delete"/>
mgmt_ipif	192.168.0.166	00-15-E9-1F-06-1A	240		<input type="button" value="Delete"/>
mgmt_ipif	192.168.0.167	00-12-15-00-06-29	240		<input type="button" value="Delete"/>
mgmt_ipif	192.168.0.178	00-50-56-8C-00-1E	240		<input type="button" value="Delete"/>

1/3

<http://192.168.0.1/www/main.html?RpWebID=ZFPWiRnhN6Bjgy10ur5X>
DXS-3600-32S

Refresh Interval: 10 secs

Save Tools Logged in as: Administrator, admin-192.168.0.149 Logout

Fuzzy Search

- DXS-3600-32S
- System
- Management
- L2 Features
- L3 Features
  - ARP
    - ARP Aging Time
    - Static ARP
    - Proxy ARP
    - ARP Table
    - Gratuitous ARP**
    - IPv4 Interface
    - IPv4 Static/Default Route
    - IPv4 Route Table
    - IPv6 Interface
    - IPv6 Static/Default Route
    - IPv6 Route Table
  - QoS
  - ACL
  - Security
  - Monitoring

### Gratuitous ARP

Gratuitous ARP Global Settings

IP Gratuitous ARP State:  Enabled  Disabled  
 IP Gratuitous ARP Dad-Reply State:  Enabled  Disabled  
 Gratuitous ARP Learning State:  Enabled  Disabled

Gratuitous ARP Send Interval

Total Entries: 1

Interface Name	Interval Time (sec)	
vian1	0	<input type="button" value="Edit"/>

1/1

<http://192.168.0.1/www/main.html?RpWebID=ZFPWiRnhN6Bjgy10ur5X>
DXS-3600-32S

Refresh Interval: 10 secs

Save Tools Logged in as: Administrator, admin-192.168.0.149 Logout

Fuzzy Search

- DXS-3600-32S
- System
- Management
- L2 Features
- L3 Features
  - ARP
    - Gratuitous ARP
    - IPv4 Interface**
    - IPv4 Static/Default Route
    - IPv4 Route Table
    - IPv6 Interface
    - IPv6 Static/Default Route
    - IPv6 Route Table
  - QoS
  - ACL
  - Security
  - Monitoring

### IPv4 Interface

Interface VLAN (1-4094)

Total Entries: 1

Interface	State	IP Address	Mask	Secondary	Link Status	
vlan1	Enabled	10.90.90.90	255.0.0.0	No	Down	<input type="button" value="Edit"/> <input type="button" value="Delete"/>

1/1

<http://192.168.0.1/www/main.html?RpWebID=ZFPWiRnhN6Bjgy10ur5X>
DXS-3600-32S

Refresh Interval: 10 secs

Save Tools Logged in as: Administrator, admin-192.168.0.149 Logout

Fuzzy Search

- DXS-3600-32S
- System
- Management
- L2 Features
- L3 Features
  - ARP
    - Gratuitous ARP
    - IPv4 Interface
      - IPv4 Static/Default Route**
      - IPv4 Route Table
      - IPv6 Interface
      - IPv6 Static/Default Route
      - IPv6 Route Table
    - QoS
    - ACL
    - Security
    - Monitoring

### IPv4 Static/Default Route

IPv4 Static/Default Route

VRF Name:

IP Address:

Netmask:

Gateway:

Backup State:

Total Entries: 0

IP Address	Gateway	Interface Name	VRF Name
------------	---------	----------------	----------



<http://192.168.0.1/www/main.html?RpWebID=ZFPWiRnhN6Bjgy10ur5X>
DXS-3600-32S

DXS-3600-32S  
Power1 FAN1  
Power2 FAN2  
MGMT FAN3  
Console SD
Refresh Interval  
10 secs

Save Tools Logged in as: Administrator, admin-192.168.0.149 Logout

Fuzzy Search

- DXS-3600-32S
- System
- Management
- L2 Features
- L3 Features
  - ARP
    - Gratuitous ARP
    - IPv4 Interface
    - IPv4 Static/Default Route
    - IPv4 Route Table**
    - IPv6 Interface
    - IPv6 Static/Default Route
    - IPv6 Route Table
  - QoS
  - ACL
  - Security
  - Monitoring

### IPv4 Route Table

IPv4 Route Table

Network Address          
 IP Address      
 RIP     OSPF     BGP     Connected     Hardware

**Total Entries: 1**

IP Address	Mask	Gateway	Interface Name	Cost	Protocol
192.168.0.0	255.255.255.0	directly connected	mgmt_lpf1	1	C

**Note:** C - connected, S - static, R - RIP, B - BGP, O - OSPF, IA - OSPF inter area N1 - OSPF NSSA external type 1, N2 - OSPF NSSA external type 2, E1 - OSPF external type 1, E2 - OSPF external type 2, \* - candidate default

<http://192.168.0.1/www/main.html?RpWebID=ZFPWiRnhN6Bjgy10ur5X>
DXS-3600-32S

DXS-3600-32S  
Power1 FAN1  
Power2 FAN2  
MGMT FAN3  
Console SD
Refresh Interval  
10 secs

Save Tools Logged in as: Administrator, admin-192.168.0.149 Logout

Fuzzy Search

- DXS-3600-32S
- System
- Management
- L2 Features
- L3 Features
  - ARP
    - Gratuitous ARP
    - IPv4 Interface
    - IPv4 Static/Default Route
    - IPv4 Route Table
    - IPv6 Interface**
    - IPv6 Static/Default Route
    - IPv6 Route Table
  - QoS
  - ACL
  - Security
  - Monitoring

### IPv6 Interface

IPv6 Interface

Interface VLAN (1-4094)

**Total Entries: 1**

Interface	IPv6 State	Link Status
vian1	Disabled	Down

<http://192.168.0.1/www/main.html?RpWebID=ZFPWiRnhN6Bjgy10ur5X>
DXS-3600-32S

Refresh Interval: 10 secs

Save Tools Logged in as: Administrator, admin-192.168.0.149 Logout

Fuzzy Search

- DXS-3600-32S
- System
- Management
- L2 Features
- L3 Features
  - ARP
    - Gratuitous ARP
    - IPv4 Interface
    - IPv4 Static/Default Route
    - IPv4 Route Table
    - IPv6 Interface
    - IPv6 Static/Default Route**
    - IPv6 Route Table
- QoS
- ACL
- Security
- Monitoring

### IPv6 Static/Default Route

IPv6 Static/Default Route

Network Prefix/Prefix Length:   Default Route

Interface VLAN (1-4094):

Next Hop IPv6 Address:

Backup State:

Total Entries: 0

Network Prefix/Prefix Length	Next Hop	Interface Name	Distance	Protocol
Total Entries: 0				

<http://192.168.0.1/www/main.html?RpWebID=ZFPWiRnhN6Bjgy10ur5X>
DXS-3600-32S

Refresh Interval: 10 secs

Save Tools Logged in as: Administrator, admin-192.168.0.149 Logout

Fuzzy Search

- DXS-3600-32S
- System
- Management
- L2 Features
- L3 Features
  - ARP
    - Gratuitous ARP
    - IPv4 Interface
    - IPv4 Static/Default Route
    - IPv4 Route Table
    - IPv6 Interface
    - IPv6 Static/Default Route
    - IPv6 Route Table**
- QoS
- ACL
- Security
- Monitoring

### IPv6 Route Table

IPv6 Route Table

IPv6 Address/Prefix Length:   Longer Prefixes  
 IPv6 Address:   
 Interface VLAN (1-4094):   
 RIPng  OSPFv3  Database  Conneted  Hardware

Total Entries: 0

Network Prtfix	Next Hop	Interface Name	Cost	Protocol
Total Entries: 0				

**Note:** C - connected, S - static, R - RIP, B - BGP, O - OSPF, IA - OSPF inter area E1 - OSPF external type 1, E2 - OSPF external type 2  
 > - selected route, \* - valid route SLAAC - Stateless address autoconfiguration

<http://192.168.0.1/www/main.html?RpWebID=ZFPWiRnhN6Bjgy10ur5X>
DXS-3600-32S

DXS-3600-32S  
Power1 FAN1  
Power2 FAN2  
MGMT Console SD
Refresh Interval  
10 secs

Save Tools Logged in as: Administrator, admin-192.168.0.149 Logout

Fuzzy Search

- DXS-3600-32S
- System
- Management
- L2 Features
- L3 Features
- QoS
  - Basic Settings
    - Port Default CoS**
    - Port Scheduler Method
    - Queue Settings
    - CoS to Queue Mapping
    - Port Rate Limiting
    - Queue Rate Limiting
  - Advanced Settings
- ACL
- Security
- Monitoring

### Port Default CoS

From Port:  To Port:  Default CoS:   Override  None

Port	Default CoS	Override
eth1/0/1	0	No
eth1/0/2	0	No
eth1/0/3	0	No
eth1/0/4	0	No
eth1/0/5	0	No
eth1/0/6	0	No
eth1/0/7	0	No
eth1/0/8	0	No
eth1/0/9	0	No
eth1/0/10	0	No
eth1/0/11	0	No
eth1/0/12	0	No
eth1/0/13	0	No
eth1/0/14	0	No
eth1/0/15	0	No

<http://192.168.0.1/www/main.html?RpWebID=ZFPWiRnhN6Bjgy10ur5X>
DXS-3600-32S

DXS-3600-32S  
Power1 FAN1  
Power2 FAN2  
MGMT Console SD
Refresh Interval  
10 secs

Save Tools Logged in as: Administrator, admin-192.168.0.149 Logout

Fuzzy Search

- DXS-3600-32S
- System
- Management
- L2 Features
- L3 Features
- QoS
  - Basic Settings
    - Port Default CoS
    - Port Scheduler Method**
    - Queue Settings
    - CoS to Queue Mapping
    - Port Rate Limiting
    - Queue Rate Limiting
  - Advanced Settings
- ACL
- Security
- Monitoring

### Port Scheduler Method

From Port:  To Port:  Method:

Port	Scheduler Method
eth1/0/1	WRR
eth1/0/2	WRR
eth1/0/3	WRR
eth1/0/4	WRR
eth1/0/5	WRR
eth1/0/6	WRR
eth1/0/7	WRR
eth1/0/8	WRR
eth1/0/9	WRR
eth1/0/10	WRR
eth1/0/11	WRR
eth1/0/12	WRR
eth1/0/13	WRR
eth1/0/14	WRR
eth1/0/15	WRR

<http://192.168.0.1/www/main.html?RpWebID=ZFPWiRnhN6Bjgy10ur5X>
DXS-3600-32S

**D-Link** Building Networks for People

Refresh Interval: 10 secs

Logged in as: Administrator, admin-192.168.0.149

**Queue Settings**

From Port: eth1/0/1    To Port: eth1/0/1    Queue ID: 0    WRR Weight (0-127):    WDRR Quantum (0-127):   

Port	ID	WRR Weight	WDRR Quantum
eth1/0/1	0	1	1
	1	1	1
	2	1	1
	3	1	1
	4	1	1
	5	1	1
	6	1	1
eth1/0/2	0	1	1
	1	1	1
	2	1	1
	3	1	1
	4	1	1
	5	1	1
	6	1	1

<http://192.168.0.1/www/main.html?RpWebID=ZFPWiRnhN6Bjgy10ur5X>
DXS-3600-32S

**D-Link** Building Networks for People

Refresh Interval: 10 secs

Logged in as: Administrator, admin-192.168.0.149

**CoS to Queue Mapping**

CoS	Queue ID
0	2
1	0
2	1
3	3
4	4
5	5
6	6
7	7





<http://192.168.0.1/www/main.html?RpWebID=ZFPWiRnhN6Bjgy10ur5X>
DXS-3600-32S

Refresh Interval: 10 secs

Save Tools Logged in as: Administrator, admin-192.168.0.149 Logout

Fuzzy Search

- DXS-3600-32S
- System
- Management
- L2 Features
- L3 Features
- QoS
  - Basic Settings
  - Advanced Settings
    - DSCP Mutation Map
    - Port Trust Set and Mutation Binc
    - DSCP CoS Mapping**
    - CoS Color Mapping
    - DSCP Color Mapping
    - Class Map
    - Aggregate Policier
    - Policy Map
    - Policy Binding
- ACL
- Security
- Monitoring

### DSCP CoS Mapping

DSCP CoS Mapping

From Port:  To Port:  CoS:  DSCP List (0-63):

Port	CoS	DSCP List
eth1/0/1	0	16-23
	1	0-7
	2	8-15
	3	24-31
	4	32-39
	5	40-47
	6	48-55
	7	56-63
eth1/0/2	0	16-23
	1	0-7
	2	8-15
	3	24-31
	4	32-39
	5	40-47
6	48-55	

<http://192.168.0.1/www/main.html?RpWebID=ZFPWiRnhN6Bjgy10ur5X>
DXS-3600-32S

Refresh Interval: 10 secs

Save Tools Logged in as: Administrator, admin-192.168.0.149 Logout

Fuzzy Search

- DXS-3600-32S
- System
- Management
- L2 Features
- L3 Features
- QoS
  - Basic Settings
  - Advanced Settings
    - DSCP Mutation Map
    - Port Trust Set and Mutation Binc
    - DSCP CoS Mapping
    - CoS Color Mapping**
    - DSCP Color Mapping
    - Class Map
    - Aggregate Policier
    - Policy Map
    - Policy Binding
- ACL
- Security
- Monitoring

### CoS Color Mapping

CoS Color Mapping

From Port:  To Port:  CoS List (0-7):  Color:

Port	Color	CoS List
eth1/0/1	Green	0-7
	Yellow	
	Red	
eth1/0/2	Green	0-7
	Yellow	
	Red	
eth1/0/3	Green	0-7
	Yellow	
	Red	
eth1/0/4	Green	0-7
	Yellow	
	Red	
eth1/0/5	Green	0-7
	Yellow	
	Red	

DXS-3600-32S

Refresh Interval: 10 secs

Logged in as: Administrator, admin-192.168.0.149

**DSCP Color Mapping**

From Port: eth1/0/1 To Port: eth1/0/1 DSCP List (0-63) Color: Green, Yellow, Red

Port	Color	DSCP List
eth1/0/1	Green	0-63
	Yellow	
	Red	
eth1/0/2	Green	0-63
	Yellow	
	Red	
eth1/0/3	Green	0-63
	Yellow	
	Red	
eth1/0/4	Green	0-63
	Yellow	
	Red	
eth1/0/5	Green	0-63
	Yellow	
	Red	

DXS-3600-32S

Refresh Interval: 10 secs

Logged in as: Administrator, admin-192.168.0.149

**Class Map**

Class Map Name: 32 chars Multiple Match Criteria: Match All, Match Any

Total Entries: 1

Class Map Name	Multiple Match Criteria	Match	Delete
class-default	Match Any		

1/1 |< < 1 > > | Go



<http://192.168.0.1/www/main.html?RpWebID=ZFPWiRnhN6Bjgy10ur5X>
DXS-3600-32S

DXS-3600-32S  
Power1 FAN1  
Power2 FAN2  
MGMT FAN3  
Console SD
Refresh Interval  
10 secs

Save Tools Logged in as: Administrator, admin-192.168.0.149 Logout

Fuzzy Search

- DXS-3600-32S
- System
- Management
- L2 Features
- L3 Features
- QoS
  - Basic Settings
  - Advanced Settings
    - DSCP Mutation Map
    - Port Trust Sate and Mutation Binc
    - DSCP CoS Mapping
    - CoS Color Mapping
    - DSCP Color Mapping
    - Class Map
    - Aggregate Policier**
    - Policy Map
    - Policy Binding
- ACL
- Security
- Monitoring

### Aggregate Policier

**Single Rate Settings**

Aggregate Policier Name \*

Normal Burst Size (0-16384)  Kbyte

Confirm Action:

Violate Action:

\* Mandatory Field

**Two Rate Settings**

Average Rate (0-10000000)  Kbps

Maximum Burst Size (0-16384)  Kbyte

Exceed Action:

Color Aware:

Name	Average Rate	Normal Burst Size	Max. Burst Size	Conform Action	Exceed Action	Violate Action	Color Aware

<http://192.168.0.1/www/main.html?RpWebID=ZFPWiRnhN6Bjgy10ur5X>
DXS-3600-32S

DXS-3600-32S  
Power1 FAN1  
Power2 FAN2  
MGMT FAN3  
Console SD
Refresh Interval  
10 secs

Save Tools Logged in as: Administrator, admin-192.168.0.149 Logout

Fuzzy Search

- DXS-3600-32S
- System
- Management
- L2 Features
- L3 Features
- QoS
  - Basic Settings
  - Advanced Settings
    - DSCP Mutation Map
    - Port Trust Sate and Mutation Binc
    - DSCP CoS Mapping
    - CoS Color Mapping
    - DSCP Color Mapping
    - Class Map
    - Aggregate Policier
    - Policy Map**
    - Policy Binding
- ACL
- Security
- Monitoring

### Policy Map

Create/Delete Policy Map

Policy Map Name

Traffic Policy

Policy Map Name  Class Map Name

**Total Entries: 0**

Policy Map Name

**Class Rules**

Class Map Name

<http://192.168.0.1/www/main.html?RpWebID=ZFPWiRnhN6Bjgy10ur5X>
DXS-3600-32S

Refresh Interval: 10 secs

Save Tools Logged in as: Administrator, admin-192.168.0.149 Logout

Fuzzy Search

- DXS-3600-32S
- System
- Management
- L2 Features
- L3 Features
- QoS
  - Basic Settings
  - Advanced Settings
    - DSCP Mutation Map
    - Port Trust State and Mutation Binc
    - DSCP CoS Mapping
    - CoS Color Mapping
    - DSCP Color Mapping
    - Class Map
    - Aggregate Policier
    - Policy Map
    - Policy Binding**
- ACL
- Security
- Monitoring

### Policy Binding

Policy Binding Setting

From Port: eth1/0/1    To Port: eth1/0/1    Direction: Input    Policy Map Name: 32 chars     None    Apply

Port	Direction	Policy Map Name
eth1/0/1		
eth1/0/2		
eth1/0/3		
eth1/0/4		
eth1/0/5		
eth1/0/6		
eth1/0/7		
eth1/0/8		
eth1/0/9		
eth1/0/10		
eth1/0/11		
eth1/0/12		
eth1/0/13		
eth1/0/14		
eth1/0/15		

<http://192.168.0.1/www/main.html?RpWebID=ZFPWiRnhN6Bjgy10ur5X>
DXS-3600-32S

Refresh Interval: 10 secs

Save Tools Logged in as: Administrator, admin-192.168.0.149 Logout

Fuzzy Search

- DXS-3600-32S
- System
- Management
- L2 Features
- L3 Features
- QoS
- ACL
  - ACL Access List**
  - ACL Interface Access Group
  - ACL VLAN Access Map
  - ACL VLAN Filter
- Security
- Monitoring

### ACL Access List

ACL Access List

ACL Type: IP ACL    ACL Name: 32 chars    Find

Total Entries: 0    Add ACL

ACL Name	ACL Type	Start Sequence No.	Step	Counter State	Remark
	IP ACL				
	IPV6 ACL				
	MAC ACL				
	Expert ACL				

Clear All Counter    Clear Counter    Add Rule

Rule ID	Action	Rule	Time Range Name	Counter

DXS-3600-32S  
Power1 FAN1 MGMT 1 2 3 4 5 6 7 8 9 10 11 12 13 14 15 16 17 18 19 20 21 22 23 24  
Power2 FAN2 Console SD

Refresh Interval: 10 secs

Logged in as: Administrator, admin-192.168.0.149 Logout

**ACL Interface Access Group**

From Port: eth1/0/1 To Port: eth1/0/1 Action: Add Type: IP ACL ACL Name: 32 chars Direction: In

Port	In				Out			
	IP ACL	IPv6 ACL	MAC ACL	Expert ACL	IP ACL	IPv6 ACL	MAC ACL	Expert ACL
eth1/0/1								
eth1/0/2								
eth1/0/3								
eth1/0/4								
eth1/0/5								
eth1/0/6								
eth1/0/7								
eth1/0/8								
eth1/0/9								
eth1/0/10								
eth1/0/11								
eth1/0/12								
eth1/0/13								
eth1/0/14								

DXS-3600-32S  
Power1 FAN1 MGMT 1 2 3 4 5 6 7 8 9 10 11 12 13 14 15 16 17 18 19 20 21 22 23 24  
Power2 FAN2 Console SD

Refresh Interval: 10 secs

Logged in as: Administrator, admin-192.168.0.149 Logout

**ACL VLAN Access Map**

Access Map Name: 32 chars

Sub Map Number (1-65535):

Action: Forward Drop Redirect

Counter State: Disabled

Access Map Name: 32 chars

Clear All Counter Clear Counter Find

Total Entries: 0

Access Map Name	Sub Map Number	Action	Match Access-List	Counter State

Browser: http://192.168.0.1/www/main.html?RpWebID=ZFPWiRnhN6Bjgy10ur5X DXS-3600-32S

D-Link Building Networks for People

Refresh Interval: 10 secs

Logged in as: Administrator, admin-192.168.0.149 Logout

Save Tools

Fuzzy Search

- DXS-3600-32S
  - System
  - Management
  - L2 Features
  - L3 Features
  - QoS
  - ACL
    - ACL Access List
    - ACL Interface Access Group
    - ACL VLAN Access Map
    - ACL VLAN Filter
  - Security
  - Monitoring

### ACL VLAN Filter

ACL VLAN Filter

Access Map Name: 32 chars

Action: Add, Delete

VID List:  All VLANs

Apply

Total Entries: 0

Access Map Name	VID List
Total Entries: 0	

Browser: http://192.168.0.1/www/main.html?RpWebID=ZFPWiRnhN6Bjgy10ur5X DXS-3600-32S

D-Link Building Networks for People

Refresh Interval: 10 secs

Logged in as: Administrator, admin-192.168.0.149 Logout

Save Tools

Fuzzy Search

- DXS-3600-32S
  - System
  - Management
  - L2 Features
  - L3 Features
  - QoS
  - ACL
  - Security
    - Trusted Host
  - Monitoring

### Trusted Host

Trusted Host

Access Class: 32 chars Type: Telnet, SSH, Ping, HTTP, HTTPS

Note: The first character of acl name must be a letter.

Apply

Total Entries: 0

Type	Access Class
Total Entries: 0	

DXS-3600-32S  
Building Networks for People

Refresh Interval: 10 secs

Logged in as: Administrator, admin-192.168.0.149

**Mirror Settings**

RSPAN VLAN Settings  
VLAN ID List (1-4094): 3 or 2-5

Mirror Settings  
Session Number: 1  
Destination: Port eth1/0/1  
Source: eth1/0/1  
From Port: eth1/0/1  
To Port: eth1/0/1  
Frame Type: Both

Mirror Session Table  
All Session: 1

Session Number	Session Type	Source			Destination	
		Both	RX	TX	Port	Remote VLAN
No data to display.						

DXS-3600-32S  
Building Networks for People

Refresh Interval: 10 secs

Logged in as: Administrator, admin-192.168.0.149

**Traffic**

Packet filter  
Port: 01  
View By: Direction  
RX

Direction	Type	Size	Error	Unit: packet/sec
				5000
				4500
				4000
				3500
				3000
				2500
				2000
				1500
				1000
				500
				0
				500
				1000
				1500
				2000
				2500
				3000
				3500
				4000
				4500
				5000