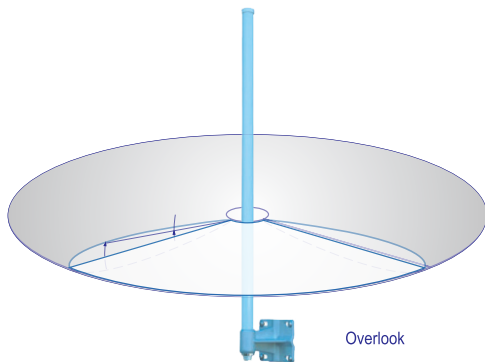


## Dual-Band Omni-Directional Antenna

### Electrical Specification

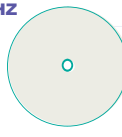
Frequency range	2400-2500 MHz	5100-5900 MHz
Peak gain	7.5~8 dBi	7~10 dBi
Average gain	6.5~7 dBi	5 ~7.5 dBi
VSWR	2.0 : 1 (max.)	
Polarization	Linear, Vertical	
Horizontal HPBW	360°	
Vertical HPBW	13°	7~10°
Input impedance	50 Ohm	
Connector	N Jack	



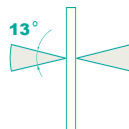
### Environmental & Mechanical Characteristics

Survival wind speed	216 km/hr
Temperature	-40°C to +80°C
Humidity	95% @ 55°C
Radome color	White
Radome material	Fiber Glass, UV Resistant
Weight	0.394kgs
Dimensions	80x78x1175 mm
Dustproof/Waterproof	IP67

**2.4GHZ**

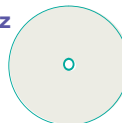


Horizontal coverage

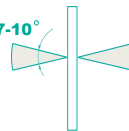


Vertical coverage

**5GHZ**

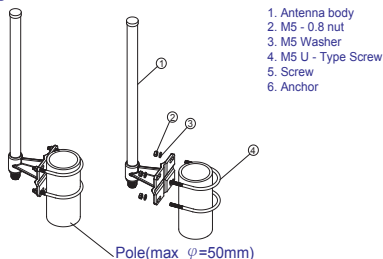


Horizontal coverage

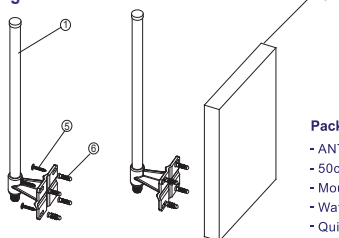


Vertical coverage

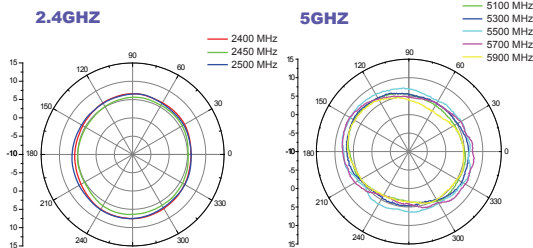
### Pole-Mounting



### Wall-Mounting



### H-plane Co-polarization Pattern



### V-plane Co-polarization Pattern

