

D-Link®

N300 WI-FI RANGE EXTENDER
DAP-1330

**QUICK
INSTALLATION
GUIDE**

A large, light gray watermark of the D-Link logo is positioned diagonally across the page, behind the main text. The logo consists of a stylized 'D' with a white triangle inside it.

CONTENTS OF PACKAGING



N300 WI-FI RANGE EXTENDER
DAP-1330



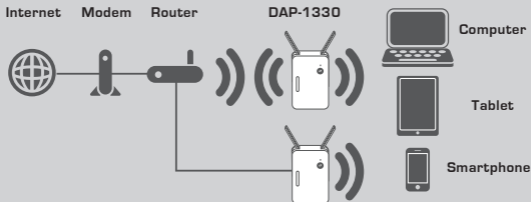
WI-FI CONFIGURATION CARD



If any of these items are missing from your packaging, contact your reseller.

INTRODUCTION

The DAP-1330 extends the wireless coverage of an existing AP (access point) or wireless router, via wireless or Ethernet port, allowing you to reach more parts of your home with wireless.



Extend the wireless coverage of another AP or wireless router.

PRODUCT SETUP

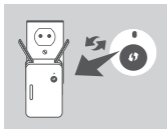
SETUP

SELECT YOUR METHOD

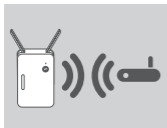
There are three methods available for setting up the DAP-1330 - using Wi-Fi Protected Setup (WPS) (recommended), the QRS Mobile App, or a web browser.

SETTING UP THE DAP-1330 USING WI-FI PROTECTED SETUP (WPS)

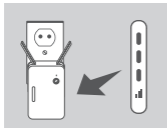
NOTE: To connect to a wireless router or AP and extend the Wi-Fi network in your home, please make sure the source router or AP features a WPS Button.



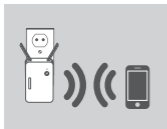
Plug the DAP-1330 into a wall outlet and wait until the Status/WPS LED is blinking amber. Push the WPS button on the source wireless router or AP, and then push the WPS button on the DAP-1330. The Status/WPS LED will start to flash green.



Please allow up to two minutes for the process to finish. The Status/WPS LED will turn solid green when the DAP-1330 has connected successfully to the source wireless router or AP.



If the Signal Indicator LED has a single amber bar after the connection process has finished, the DAP-1330 has established a poor quality connection. To improve the connection quality, the DAP-1330 should be relocated to a wall outlet closer to the source wireless router or AP. The more lit bars on the Signal Indicator LED, the better the wireless signal.



The DAP-1330 is now ready to share the extended Wi-Fi network with your PCs and mobile devices. Connect to the extension network created by the DAP-1330 using the following network name (SSID):

- 2.4 GHz: **(Your router's SSID)-EXT**
Please use your router's usual password.

PRODUCT SETUP

SETUP

SET UP DAP-1330 WITH QRS MOBILE APP

The DAP-1330 can be configured using your smartphone. Search for "D-Link QRS Mobile" on the Apple App Store or Google Play, and download the app. Next, connect your smartphone to the DAP-1330 and follow the helpful in-app prompts, or refer to the product manual for more information.

SET UP DAP-1330 WITH A WEB BROWSER

The DAP-1330 can also be configured using a web browser. Once you have plugged the DAP-1330 into a wall outlet within wireless range of your router, open the wireless utility on your computer, select the name (SSID) of the DAP-1330 network, and enter the password (both of these are found on your Wi-Fi Configuration Card). Next, open a web browser (e.g. Internet Explorer, Firefox, Safari, or Chrome) and enter `http://dlinkap.local./` or if you have multiple DAP-1330's, enter `http://dlinkapwxyz.local./` and replace wxyz with the last 4 digits of the MAC address of the DAP-1330 you wish to configure.

TROUBLESHOOTING

SETUP AND CONFIGURATION PROBLEMS

1. HOW DO I RESET MY DAP-1330 AC1200 WI-FI RANGE EXTENDER TO FACTORY DEFAULT SETTINGS?

- Ensure the product is powered on.
- Using a paperclip, press and hold the reset button on the bottom of the device for 5 seconds.

Note: Resetting the product to the factory default will erase the current configuration settings. The default Wi-Fi network name (SSID) and password are printed on the DAP-1330's Wi-Fi Configuration Card.

2. HOW DO I CONNECT A PC OR OTHER DEVICE TO THE DAP-1330 IF I HAVE FORGOTTEN MY WI-FI NETWORK NAME (SSID) OR WI-FI PASSWORD?

- If you haven't changed the extended Wi-Fi network's settings, you can use the network name (SSID) and Wi-Fi password on the Wi-Fi Configuration Card.
- If you did change the network name (SSID) or Wi-Fi password and you did not record this information on the Wi-Fi Configuration Card or somewhere else, you must reset the device as described in Question 1 above.
- It is recommended that you make a record of this information so that you can easily connect additional wireless devices in the future. You can use the included Wi-Fi Configuration Card to record this important information for future use.

TECHNICAL SUPPORT

support.dlink.com.au

NOTES