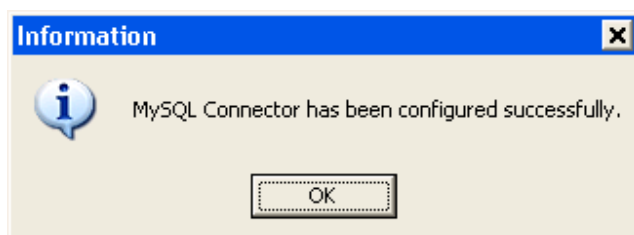
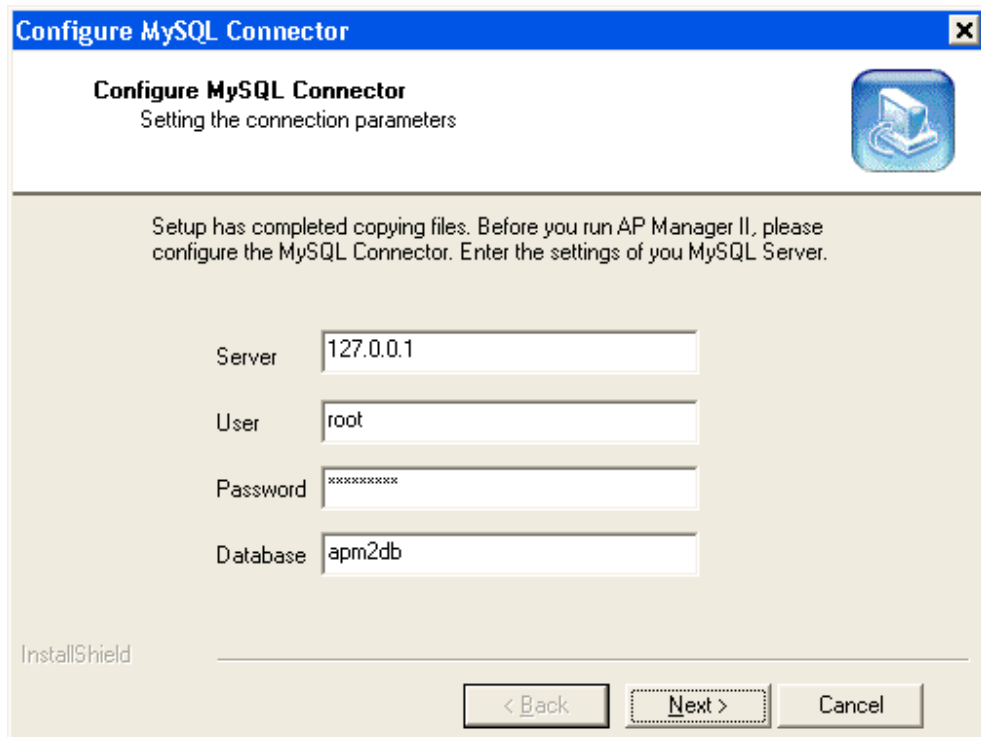
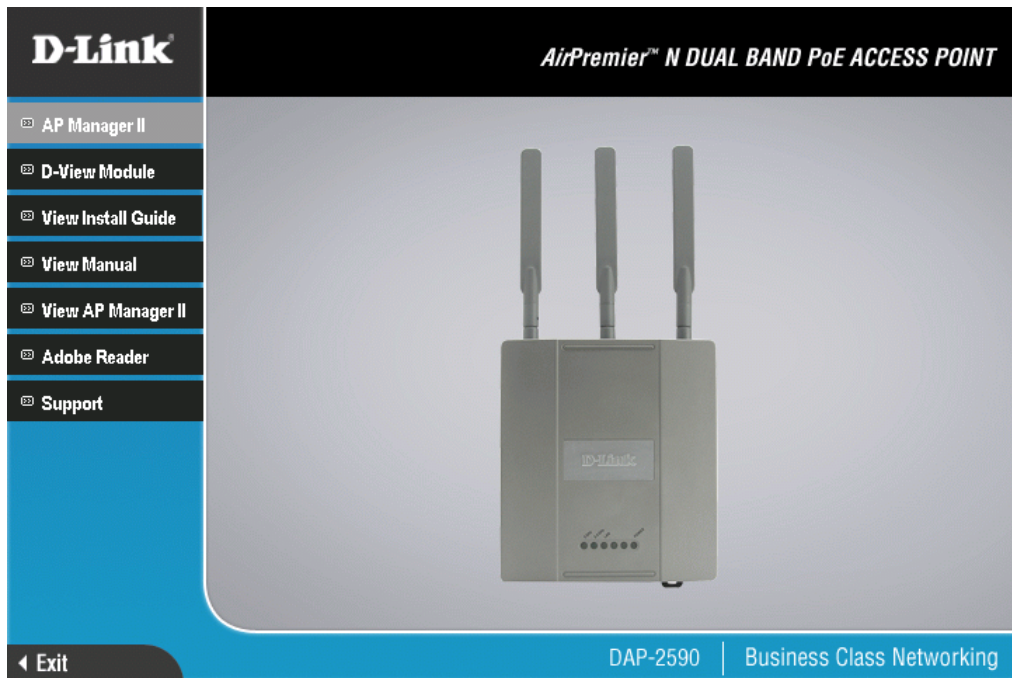
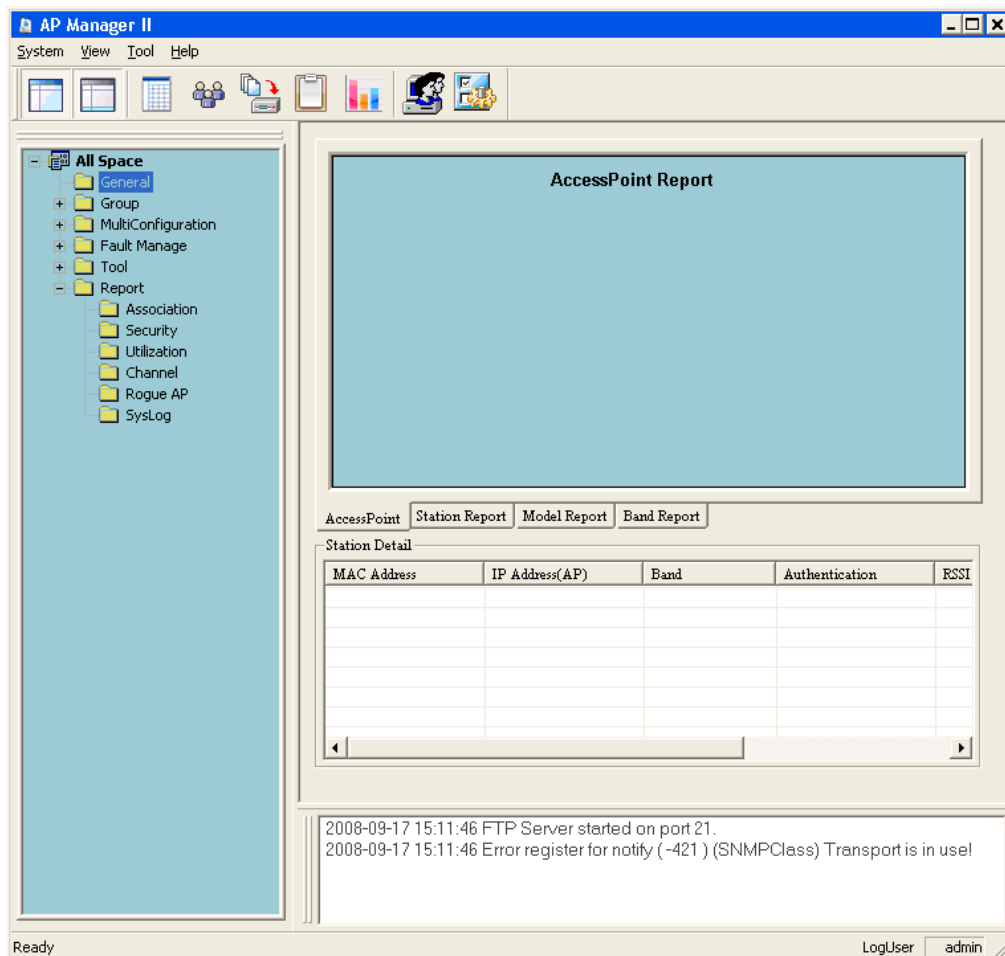
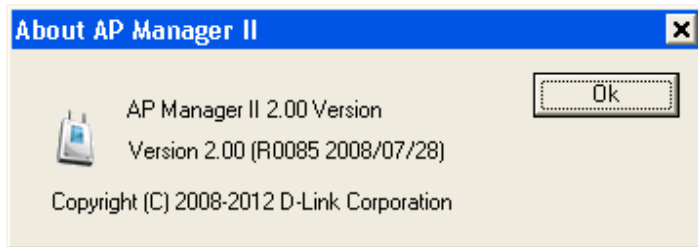
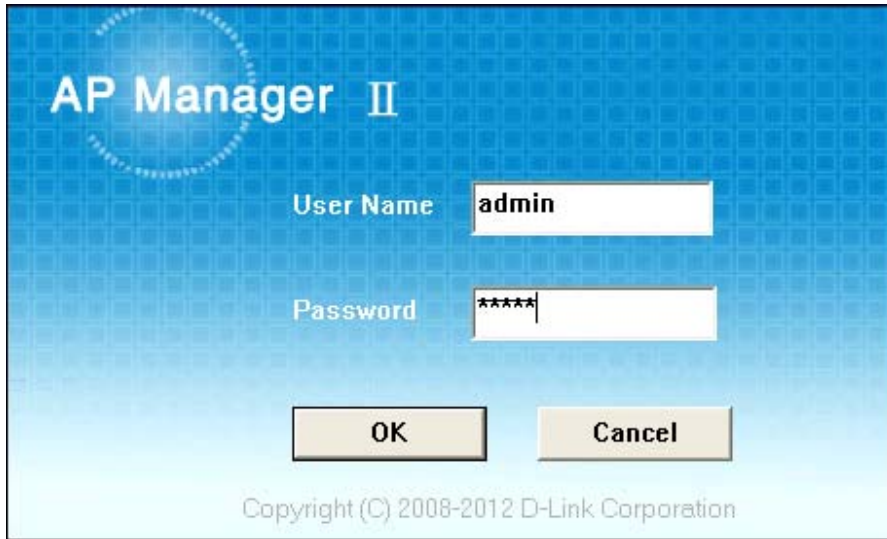


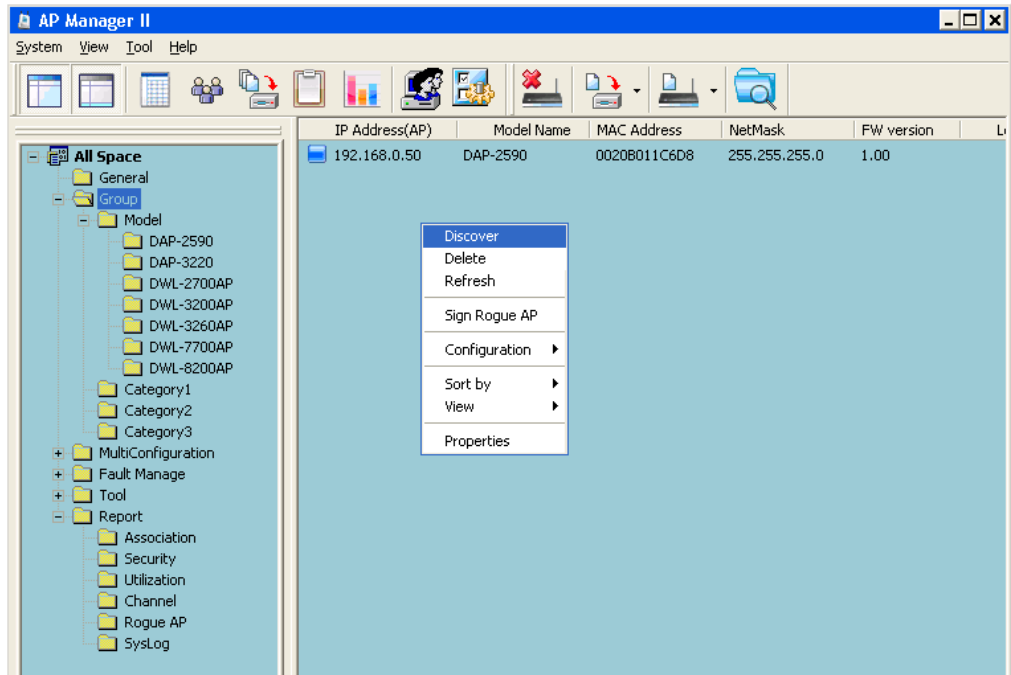
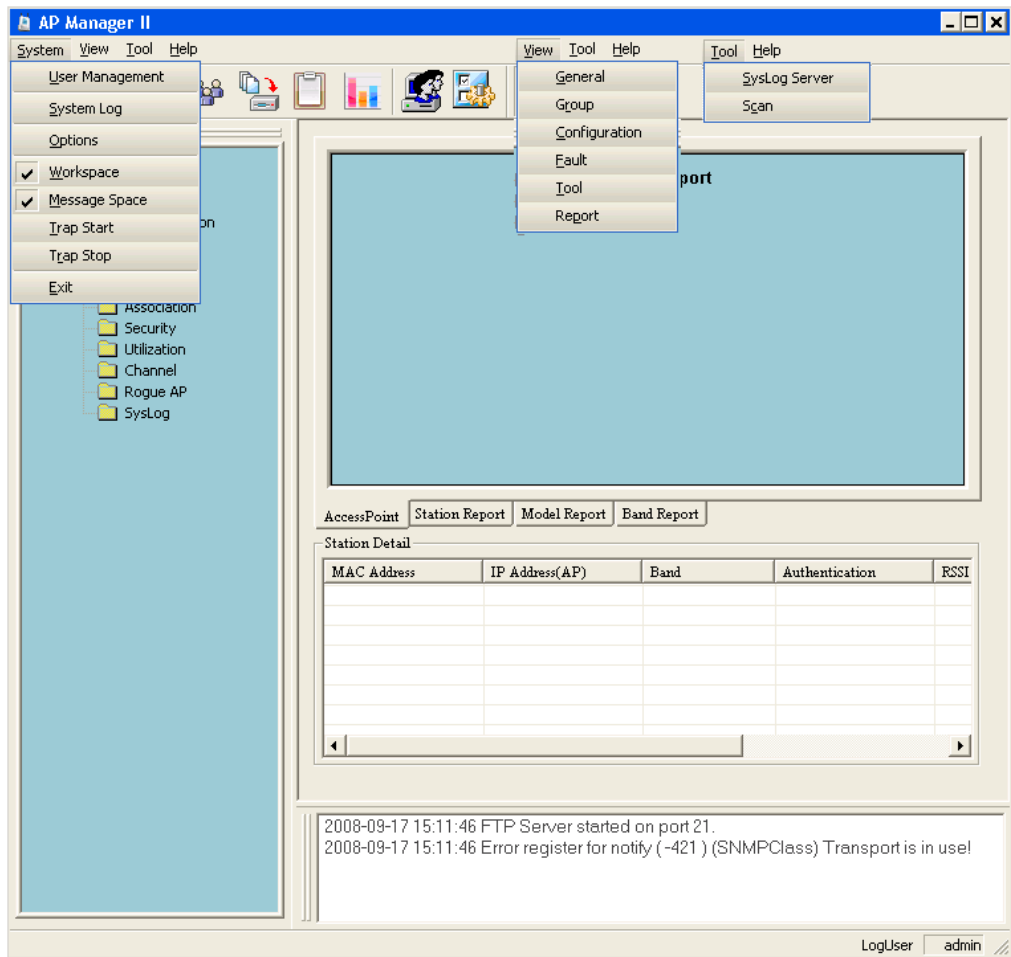
DAP-2590

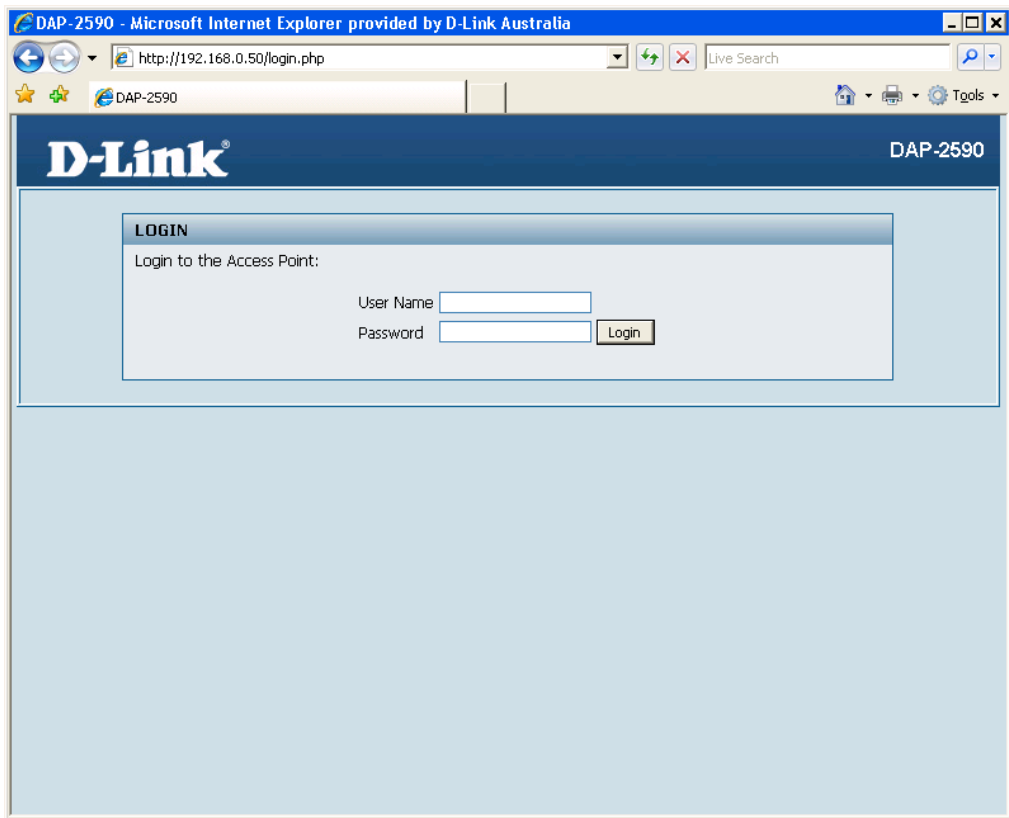
H/w A1, F/w 1.0



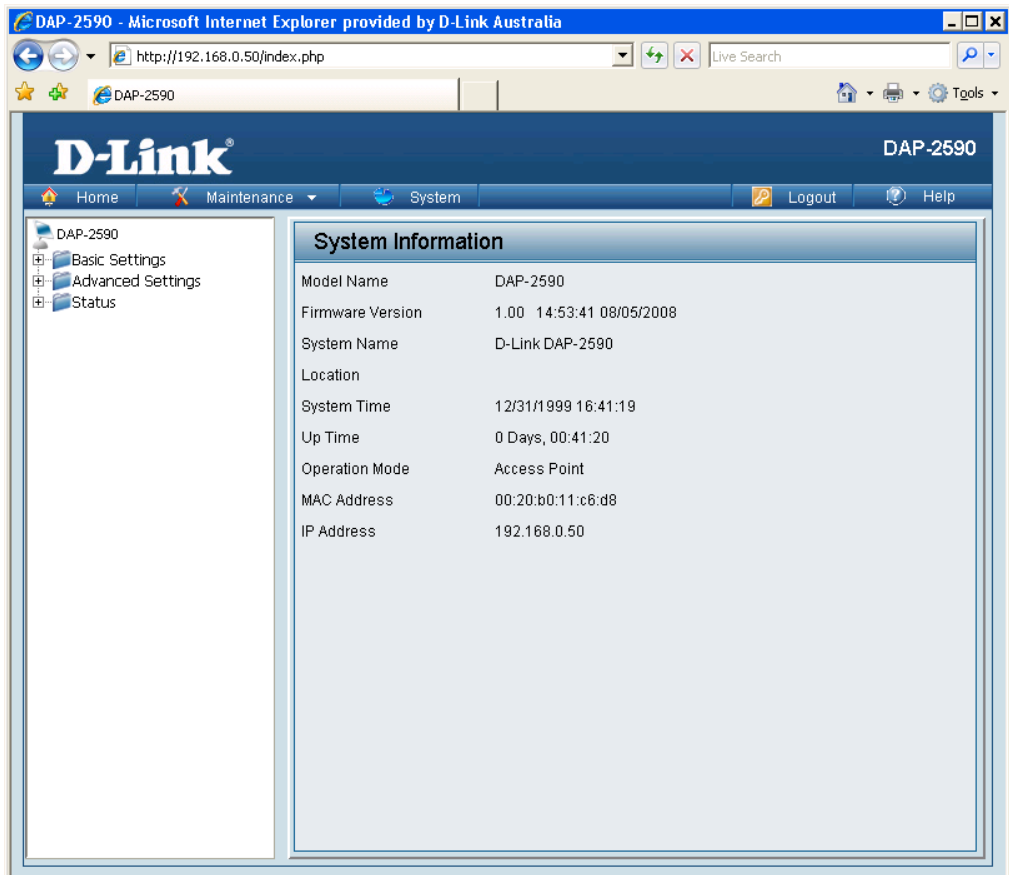
Admin/admin







Admin/blank



DAP-2590 - Microsoft Internet Explorer provided by D-Link Australia

http://192.168.0.50/index.php

Live Search

DAP-2590

D-Link DAP-2590

Home Maintenance System Logout Help

DAP-2590 Administration Settings
 Firmware and SSL Certification Upload
 Configuration File
 Time and Date

Information

| | |
|------------------|--------------------------|
| DAP-2590 | |
| Firmware version | 1.00 14:53:41 08/05/2008 |
| System Name | D-Link DAP-2590 |
| Location | |
| System Time | 12/31/1999 16:41:19 |
| Up Time | 0 Days, 00:41:20 |
| Operation Mode | Access Point |
| MAC Address | 00:20:b0:11:c6:d8 |
| IP Address | 192.168.0.50 |

DAP-2590 - Microsoft Internet Explorer provided by D-Link Australia

http://192.168.0.50/index.php

Live Search

DAP-2590

D-Link DAP-2590

Home Maintenance System Logout Help

DAP-2590 Basic Settings Advanced Settings Status

System Settings

Restart the Device

Restore to Factory Default Settings

DAP-2590 - Microsoft Internet Explorer provided by D-Link Australia

http://192.168.0.50/index.php

DAP-2590

D-Link DAP-2590

Home Maintenance System Logout Help

DAP-2590

- Basic Settings
 - Wireless
 - LAN
- Advanced Settings
- Status

Wireless Settings

Wireless Band: 2.4GHz

Mode: Access Point

Network Name (SSID): Access Point

SSID Visibility: WDS with AP

Auto Channel Selection: Enable

Channel: 11

Channel Width: 20 MHz

Authentication: WPA-Personal

PassPhrase Settings

WPA Mode: AUTO (WPA or WPA2)

Cipher Type: Auto Group Key Update Interval: 1800 (Seconds)

PassPhrase:

Confirm PassPhrase:

Apply

DAP-2590 - Microsoft Internet Explorer provided by D-Link Australia

http://192.168.0.50/index.php

DAP-2590

D-Link DAP-2590

Home Maintenance System Logout Help

DAP-2590

- Basic Settings
 - Wireless
 - LAN
- Advanced Settings
- Status

Wireless Settings

Wireless Band: 2.4GHz

Mode: Access Point

Network Name (SSID): dlink

SSID Visibility: Enable

Auto Channel Selection: Enable

Channel: 13

Channel Width: 20 MHz

Authentication: 20 MHz

PassPhrase Settings

WPA Mode: AUTO (WPA or WPA2)

Cipher Type: Auto Group Key Update Interval: 1800 (Seconds)

PassPhrase:

Confirm PassPhrase:

Apply

DAP-2590 - Microsoft Internet Explorer provided by D-Link Australia

http://192.168.0.50/index.php

DAP-2590

D-Link DAP-2590

Home Maintenance System Logout Help

DAP-2590

- Basic Settings
 - Wireless
 - LAN
- Advanced Settings
- Status

Wireless Settings

Wireless Band: 2.4GHz

Mode: Access Point

Network Name (SSID): dlink

SSID Visibility: Enable

Auto Channel Selection: Enable

Channel: 13

Channel Width: 20 MHz

Authentication: WPA-Personal

PassPhrase Settings:

- Open System
- Shared Key
- WPA-Personal
- WPA-Enterprise

Cipher Type: Auto Group Key Update Interval: 1800 (Seconds)

PassPhrase:

Confirm PassPhrase:

Apply

DAP-2590 - Microsoft Internet Explorer provided by D-Link Australia

http://192.168.0.50/index.php

DAP-2590

D-Link DAP-2590

Home Maintenance System Logout Help

DAP-2590

- Basic Settings
 - Wireless
 - LAN
- Advanced Settings
- Status

Wireless Settings

Wireless Band: 2.4GHz

Mode: Access Point

Network Name (SSID): dlink

SSID Visibility: Enable

Auto Channel Selection: Enable

Channel: 13

Channel Width: 20 MHz

Authentication: WPA-Personal

PassPhrase Settings:

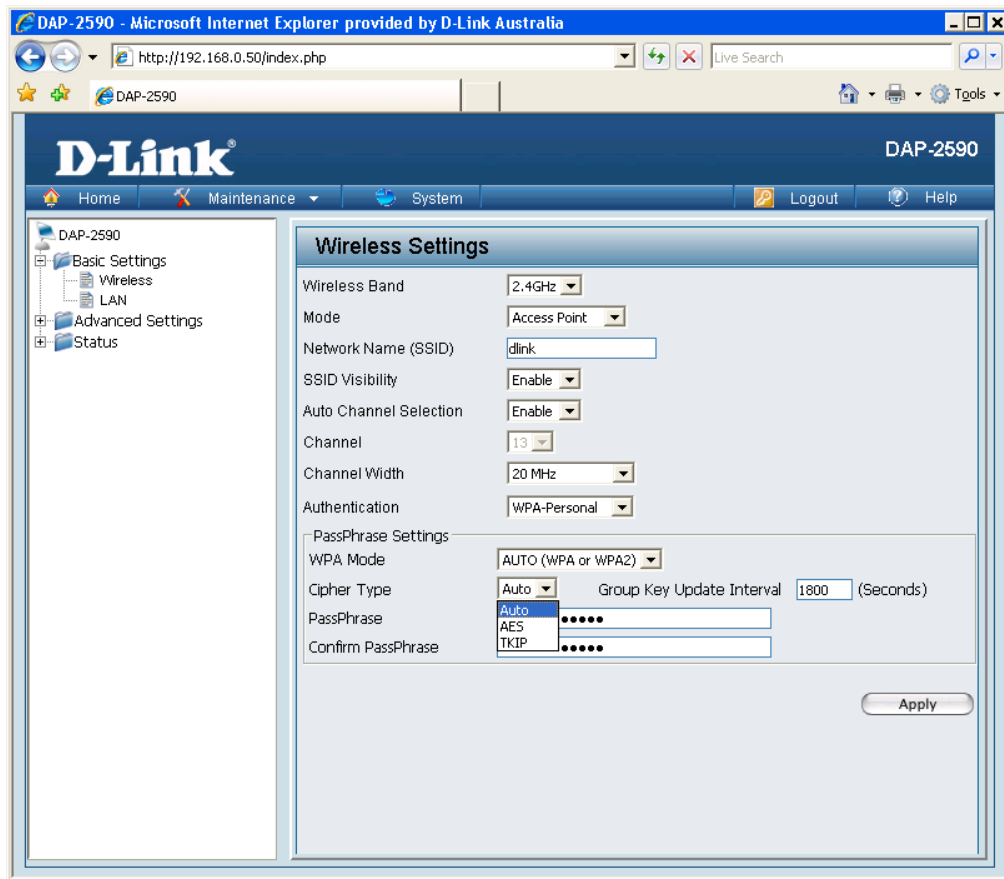
- AUTO (WPA or WPA2)
- AUTO (WPA or WPA2)
- WPA2 Only
- WPA Only

Cipher Type: WPA2 Only Group Key Update Interval: 1800 (Seconds)

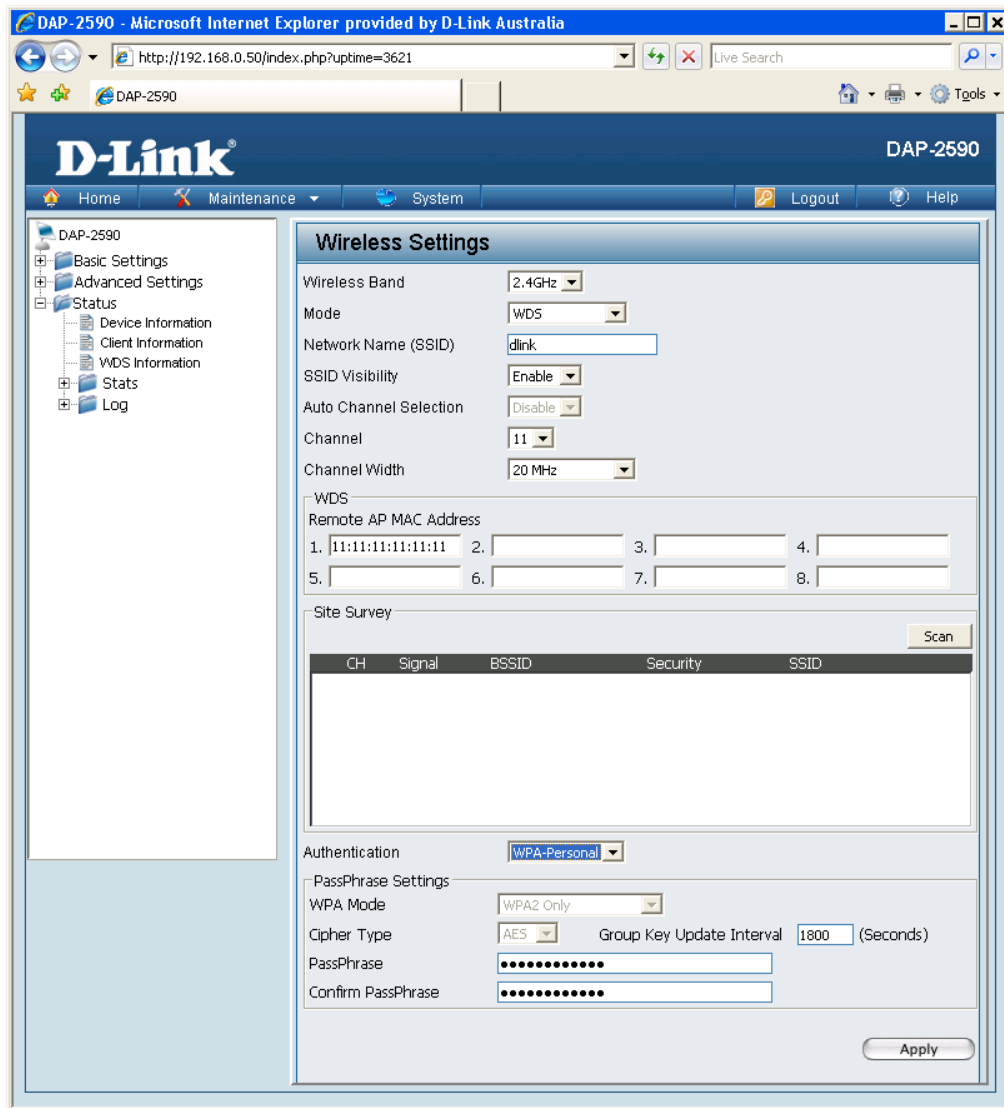
PassPhrase:

Confirm PassPhrase:

Apply



WDS Mode:



WDS+AP mode:

DAP-2590 - Microsoft Internet Explorer provided by D-Link Australia
http://192.168.0.50/index.php?uptime=3796

D-Link DAP-2590

Home Maintenance System Logout Help

DAP-2590
Basic Settings
Advanced Settings
Status

Wireless Settings

Wireless Band: 2.4GHz
Mode: WDS with AP
Network Name (SSID): dlink
SSID Visibility: Enable
Auto Channel Selection: Disable
Channel: 11
Channel Width: 20 MHz

WDS
Remote AP MAC Address
1. 11:11:11:11:11:11 2. 3. 4.
5. 6. 7. 8.

Site Survey

| CH | Signal | BSSID | Security | SSID |
|----|--------|-------|----------|------|
|----|--------|-------|----------|------|

Authentication: WPA-Personal

PassPhrase Settings
WPA Mode: AUTO (WPA or WPA2)
Cipher Type: WPA2 Only Update Interval: 1800 (Seconds)
PassPhrase:
Confirm PassPhrase:

DAP-2590 - Microsoft Internet Explorer provided by D-Link Australia

http://192.168.0.50/index.php?uptime=3796

DAP-2590

D-Link

DAP-2590

Home Maintenance System Logout Help

- DAP-2590
 - Basic Settings
 - Advanced Settings
 - Status

Wireless Settings

Wireless Band: 2.4GHz

Mode: WDS with AP

Network Name (SSID): dlink

SSID Visibility: Enable

Auto Channel Selection: Disable

Channel: 11

Channel Width: 20 MHz

WDS

Remote AP MAC Address

1. 11:11:11:11:11:11 2. 3. 4. 5. 6. 7. 8.

Site Survey

Scan

| CH | Signal | BSSID | Security | SSID |
|----|--------|-------|----------|------|
|----|--------|-------|----------|------|

Authentication: WPA-Personal

PassPhrase Settings

WPA Mode: AUTO (WPA or WPA2)

Cipher Type: AES Group Key Update Interval: 1800 (Seconds)

PassPhrase: Auto AES

Confirm PassPhrase:

Apply

DAP-2590 - Microsoft Internet Explorer provided by D-Link Australia

http://192.168.0.50/index.php

DAP-2590

D-Link DAP-2590

Home Maintenance System Logout Help

DAP-2590

- Basic Settings
 - Wireless
 - LAN
- Advanced Settings
- Status

LAN Settings

Get IP From: Static IP (Manual)

IP Address: Static IP (Manual)

Subnet Mask: 255.255.255.0

Default Gateway:

Apply

DAP-2590 - Microsoft Internet Explorer provided by D-Link Australia

http://192.168.0.50/index.php

DAP-2590

D-Link DAP-2590

Home Maintenance System Logout Help

DAP-2590

- Basic Settings
- Advanced Settings
 - Performance
 - Multi-SSID
 - VLAN
 - Intrusion
 - Schedule
 - QoS
 - DHCP Server
 - Filters
- Status

Performance Settings

Wireless: On

Wireless Mode: Mixed 802.11n, 802.11g and 802.11b

Data Rate: Mixed 802.11n, 802.11g and 802.11b

Beacon Interval (25-500): 100

DTIM Interval (1-15): 1

Transmit Power: 100%

WMM (Wi-Fi Multimedia): Enable

Ack Time Out (2.4GHz, 48~200): 48 (μs)

Short GI: Enable

IGMP Snooping: Disable

Link Integrity: Disable

Connection Limit: Disable

User Limit (0 - 64): 20

Network Utilization: 100%

Apply

DAP-2590 - Microsoft Internet Explorer provided by D-Link Australia

http://192.168.0.50/index.php

DAP-2590

D-Link DAP-2590

Home Maintenance System Logout Help

DAP-2590

- Basic Settings
- Advanced Settings
 - Performance
 - Multi-SSID
 - VLAN
 - Intrusion
 - Schedule
 - QoS
 - DHCP Server
 - Filters
- Status

Performance Settings

Wireless: On

Wireless Mode: Mixed 802.11g and 802.11b

Data Rate: Best(Up to 54) (Mbps)

Beacon Interval (25-500): 54

DTIM Interval (1-15): 48

Transmit Power: 36

WMM (Wi-Fi Multimedia): 24

Ack Time Out (2.4GHz, 48~200): 18

Short GI: 12

IGMP Snooping: 9

Link Integrity: Disable

Connection Limit: Disable

User Limit (0 - 64): 20

Network Utilization: 100%

Apply

DAP-2590 - Microsoft Internet Explorer provided by D-Link Australia

http://192.168.0.50/index.php

DAP-2590

D-Link DAP-2590

Home Maintenance System Logout Help

DAP-2590

- Basic Settings
- Advanced Settings
 - Performance
 - Multi-SSID
 - VLAN
 - Intrusion
 - Schedule
 - QoS
 - DHCP Server
 - Filters
- Status

Performance Settings

Wireless: On

Wireless Mode: Mixed 802.11n, 802.11g and 802.11b

Data Rate: Best(Up to 300) (Mbps)

Beacon Interval (25-500): 100

DTIM Interval (1-15): 1

Transmit Power: 100%

WMM (Wi-Fi Multimedia): 100%

Ack Time Out (2.4GHz, 48~200): 50% (μs)

Short GI: Enable

IGMP Snooping: Disable

Link Integrity: Disable

Connection Limit: Disable

User Limit (0 - 64): 20

Network Utilization: 100%

Apply

DAP-2590 - Microsoft Internet Explorer provided by D-Link Australia

http://192.168.0.50/index.php

DAP-2590

D-Link DAP-2590

Home Maintenance System Logout Help

DAP-2590

- Basic Settings
- Advanced Settings
 - Performance
 - Multi-SSID
 - VLAN
 - Intrusion
 - Schedule
 - QoS
 - DHCP Server
 - Filters
- Status

Performance Settings

Wireless: On

Wireless Mode: Mixed 802.11n, 802.11g and 802.11b

Data Rate: Best (Up to 300) (Mbps)

Beacon Interval (25-500): 100

DTIM Interval (1-15): 1

Transmit Power: 100%

WMM (Wi-Fi Multimedia): Enable

Ack Time Out (2.4GHz, 48~200): 48 (μs)

Short GI: Enable

IGMP Snooping: Disable

Link Integrity: Disable

Connection Limit: Enable

User Limit (0 - 64): 20

Network Utilization: 100%

Apply

DAP-2590 - Microsoft Internet Explorer provided by D-Link Australia

http://192.168.0.50/index.php

DAP-2590

D-Link DAP-2590

Home Maintenance System Logout Help

DAP-2590

- Basic Settings
- Advanced Settings
 - Performance
 - Multi-SSID
 - VLAN
 - Intrusion
 - Schedule
 - QoS
 - DHCP Server
 - Filters
- Status

Multi-SSID Settings

Enable Multi-SSID

Wireless Settings

Band: 2.4 GHz

Index: Primary SSID

SSID: dlink

SSID Visibility: Enable

Security: WPA-Personal

WMM (Wi-Fi Multimedia): Enable

Add

| Index | SSID | Band | Encryption | Delete |
|--------------|-------|---------|-------------------|--------|
| Primary SSID | dlink | 2.4 GHz | WPA-Auto-Personal | |

Apply

DAP-2590 - Microsoft Internet Explorer provided by D-Link Australia

http://192.168.0.50/index.php

DAP-2590

D-Link DAP-2590

Home Maintenance System Logout Help

DAP-2590

- Basic Settings
- Advanced Settings
 - Performance
 - Multi-SSID
 - VLAN
 - Intrusion
 - Schedule
 - GoS
- DHCP Server
- Filters
- Status

Multi-SSID Settings

Enable Multi-SSID

Wireless Settings

Band: 2.4 GHz

Index: Primary SSID

SSID: Primary SSID

SSID Visibility: SSID 1

Security: SSID 2

WMM (Wi-Fi Multimedia): SSID 3

PassPhrase Settings

WPA Mode: AUTO (WPA or WPA2)

Cipher Type: Auto Group Key Update Interval: 1800 Seconds

PassPhrase:

Confirm PassPhrase:

Add

| Index | SSID | Band | Encryption | Delete |
|--------------|-------|---------|-------------------|--------|
| Primary SSID | dlink | 2.4 GHz | WPA-Auto-Personal | |

DAP-2590 - Microsoft Internet Explorer provided by D-Link Australia

http://192.168.0.50/index.php?uptime=2889

DAP-2590

D-Link DAP-2590

Home Maintenance System Logout Help

DAP-2590

- Basic Settings
- Advanced Settings
 - Performance
 - Multi-SSID
 - VLAN
 - Intrusion
 - Schedule
 - GoS
- DHCP Server
- Filters
- Status

VLAN Settings

VLAN Status : Disable Enable

VLAN Mode : Static

| VLAN List | | Port List | Add/Edit VLAN | PVID Setting | | |
|-----------|-----------|---|----------------|--------------|--------|--|
| VID | VLAN Name | Untag VLAN Ports | Tag VLAN Ports | Edit | Delete | |
| 1 | default | Mgmt, LAN, Primary, S-1, S-2, S-3, S-4, S-5, S-6, S-7, W-1, W-2, W-3, W-4, W-5, W-6, W-7, W-8 | | | | |

DAP-2590 - Microsoft Internet Explorer provided by D-Link Australia

http://192.168.0.50/index.php?uptime=2889

DAP-2590

D-Link DAP-2590

Home Maintenance System Logout Help

DAP-2590

- Basic Settings
- Advanced Settings
 - Performance
 - Multi-SSID
 - VLAN
 - Intrusion
 - Schedule
 - QoS
- DHCP Server
- Filters
- Status

VLAN Settings

VLAN Status : Disable Enable

VLAN Mode : Static

VLAN List Port List Add/Edit VLAN PVID Setting

| Port Name | Tag VID | Untag VID | PVID |
|-----------|---------|-----------|------|
| Mgmt | 1 | 1 | 1 |
| LAN | 1 | 1 | 1 |
| dlink | 1 | 1 | 1 |
| dlink1 | 1 | 1 | 1 |
| dlink2 | 1 | 1 | 1 |
| dlink3 | 1 | 1 | 1 |
| dlink4 | 1 | 1 | 1 |
| dlink5 | 1 | 1 | 1 |
| dlink6 | 1 | 1 | 1 |
| dlink7 | 1 | 1 | 1 |
| W-1 | 1 | 1 | 1 |
| W-2 | 1 | 1 | 1 |
| W-3 | 1 | 1 | 1 |
| W-4 | 1 | 1 | 1 |
| W-5 | 1 | 1 | 1 |
| W-6 | 1 | 1 | 1 |
| W-7 | 1 | 1 | 1 |
| W-8 | 1 | 1 | 1 |

DAP-2590 - Microsoft Internet Explorer provided by D-Link Australia

http://192.168.0.50/index.php?uptime=2889

DAP-2590

D-Link DAP-2590

Home Maintenance System Logout Help

DAP-2590

- Basic Settings
- Advanced Settings
 - Performance
 - Multi-SSID
 - VLAN
 - Intrusion
 - Schedule
 - QoS
- DHCP Server
- Filters
- Status

VLAN Settings

VLAN Status : Disable Enable

VLAN Mode : Static

VLAN List Port List **Add/Edit VLAN** PVID Setting

VLAN ID (VID) VLAN Name

| Port | Select All | Mgmt | LAN |
|------------|------------|----------------------------------|----------------------------------|
| Untag | All | <input checked="" type="radio"/> | <input checked="" type="radio"/> |
| Tag | All | <input type="radio"/> | <input type="radio"/> |
| Not Member | All | <input type="radio"/> | <input type="radio"/> |

| MSSID Port | Select All | Primary | S-1 | S-2 | S-3 | S-4 | S-5 | S-6 | S-7 |
|------------|------------|----------------------------------|----------------------------------|----------------------------------|----------------------------------|----------------------------------|----------------------------------|----------------------------------|----------------------------------|
| Untag | All | <input checked="" type="radio"/> | <input checked="" type="radio"/> | <input checked="" type="radio"/> | <input checked="" type="radio"/> | <input checked="" type="radio"/> | <input checked="" type="radio"/> | <input checked="" type="radio"/> | <input checked="" type="radio"/> |
| Tag | All | <input type="radio"/> | <input type="radio"/> | <input type="radio"/> | <input type="radio"/> | <input type="radio"/> | <input type="radio"/> | <input type="radio"/> | <input type="radio"/> |
| Not Member | All | <input type="radio"/> | <input type="radio"/> | <input type="radio"/> | <input type="radio"/> | <input type="radio"/> | <input type="radio"/> | <input type="radio"/> | <input type="radio"/> |

| WDS Port | Select All | W-1 | W-2 | W-3 | W-4 | W-5 | W-6 | W-7 | W-8 |
|------------|------------|----------------------------------|----------------------------------|----------------------------------|----------------------------------|----------------------------------|----------------------------------|----------------------------------|----------------------------------|
| Untag | All | <input checked="" type="radio"/> | <input checked="" type="radio"/> | <input checked="" type="radio"/> | <input checked="" type="radio"/> | <input checked="" type="radio"/> | <input checked="" type="radio"/> | <input checked="" type="radio"/> | <input checked="" type="radio"/> |
| Tag | All | <input type="radio"/> | <input type="radio"/> | <input type="radio"/> | <input type="radio"/> | <input type="radio"/> | <input type="radio"/> | <input type="radio"/> | <input type="radio"/> |
| Not Member | All | <input type="radio"/> | <input type="radio"/> | <input type="radio"/> | <input type="radio"/> | <input type="radio"/> | <input type="radio"/> | <input type="radio"/> | <input type="radio"/> |

DAP-2590 - Microsoft Internet Explorer provided by D-Link Australia

http://192.168.0.50/index.php?uptime=2889

DAP-2590

D-Link DAP-2590

Home Maintenance System Logout Help

- DAP-2590
 - Basic Settings
 - Advanced Settings
 - Performance
 - Multi-SSID
 - VLAN
 - Intrusion
 - Schedule
 - GoS
 - DHCP Server
 - Filters
 - Status

VLAN Settings

VLAN Status : Disable Enable
 VLAN Mode : Static

VLAN List Port List Add/Edit VLAN **PVID Setting**

PVID Auto Assign Status Disable Enable

| Port | Mgmt | LAN |
|------|--------------------------------|--------------------------------|
| PVID | <input type="text" value="1"/> | <input type="text" value="1"/> |

| MSSID Port | Primary | S-1 | S-2 | S-3 | S-4 | S-5 | S-6 | S-7 |
|------------|--------------------------------|--------------------------------|--------------------------------|--------------------------------|--------------------------------|--------------------------------|--------------------------------|--------------------------------|
| PVID | <input type="text" value="1"/> | <input type="text" value="1"/> | <input type="text" value="1"/> | <input type="text" value="1"/> | <input type="text" value="1"/> | <input type="text" value="1"/> | <input type="text" value="1"/> | <input type="text" value="1"/> |

| WDS Port | W-1 | W-2 | W-3 | W-4 | W-5 | W-6 | W-7 | W-8 |
|----------|--------------------------------|--------------------------------|--------------------------------|--------------------------------|--------------------------------|--------------------------------|--------------------------------|--------------------------------|
| PVID | <input type="text" value="1"/> | <input type="text" value="1"/> | <input type="text" value="1"/> | <input type="text" value="1"/> | <input type="text" value="1"/> | <input type="text" value="1"/> | <input type="text" value="1"/> | <input type="text" value="1"/> |

Apply

DAP-2590 - Microsoft Internet Explorer provided by D-Link Australia

http://192.168.0.50/index.php?uptime=2889

DAP-2590

D-Link DAP-2590

Home Maintenance System Logout Help

- DAP-2590
 - Basic Settings
 - Advanced Settings
 - Performance
 - Multi-SSID
 - VLAN
 - Intrusion
 - Schedule
 - GoS
 - DHCP Server
 - Filters
 - Status

Wireless Intrusion Protection

Detect

AP List

All

| Band | CH | SSID | BSSID | Last Seen | Status |
|------|----|------|-------|-----------|--------|
| | | | | | |

Mark All New Access Points as Valid Access Points
 Mark All New Access Points as Rogue Access Points

Apply

DAP-2590 - Microsoft Internet Explorer provided by D-Link Australia
 http://192.168.0.50/index.php?uptime=3211

D-Link DAP-2590

Home Maintenance System Logout Help

DAP-2590
 Basic Settings
 Advanced Settings
 Status

Wireless Intrusion Protection

Detect

AP List
 All

| Type | Band | CH | SSID | BSSID | Last Seen | Status |
|------|------|----|---------------------|-------------------|------------------|--------|
| New | G | 6 | GUESTNET | 00:1E:13:C7:0E:81 | 0 Days, 00:53:27 | Up |
| New | G | 6 | OfficeNet | 00:1E:13:C7:0E:82 | 0 Days, 00:53:27 | Up |
| New | N | 8 | dlink | 00:1B:11:EB:D3:03 | 0 Days, 00:53:27 | Up |
| New | G | 10 | print server 05AF36 | 00:0E:35:EB:DB:55 | 0 Days, 00:53:27 | Up |
| New | G | 11 | adq | 00:19:7E:4A:39:89 | 0 Days, 00:53:27 | Up |

Set as Valid Set as Neighborhood Set as Rogue Set as New

Mark All New Access Points as Valid Access Points
 Mark All New Access Points as Rogue Access Points

Apply

DAP-2590 - Microsoft Internet Explorer provided by D-Link Australia
 http://192.168.0.50/index.php?uptime=3299

D-Link DAP-2590

Home Maintenance System Logout Help

DAP-2590
 Basic Settings
 Advanced Settings
 Performance
 Multi-SSID
 VLAN
 Intrusion
 Schedule
 QoS
 DHCP Server
 Filters
 Status

Wireless Schedule Settings

Wireless Schedule **Enable**

Add Schedule Rule

Name

Day(s) All Week Select Day(s)
 Sun Mon Tue Wed Thu Fri Sat

All Day(s)

Start Time : (hour:minute, 24 hour time)

End Time : (hour:minute, 24 hour time)

Wireless **Off**

Add Clear

Schedule Rule List

| Name | Day(s) | Time Frame | Wireless | Edit | Delete |
|------|--------|------------|----------|------|--------|
| | | | | | |

Apply

DAP-2590 - Microsoft Internet Explorer provided by D-Link Australia
 http://192.168.0.50/index.php?uptime=3299

D-Link DAP-2590

Home Maintenance System Logout Help

DAP-2590

- Basic Settings
- Advanced Settings
 - Performance
 - Multi-SSID
 - VLAN
 - Intrusion
 - Schedule
 - QoS
- DHCP Server
- Filters
- Status

QoS Settings

QoS(Quality of Service) Enable

Priority Classifiers

HTTP

Automatic (default if not matched by anything else)

Add QoS Rule

Name

Priority

- Background(BK)
- Best Effort(BE)
- Video(VI)
- Voice(VO)

Protocol

Host 1 IP Range

Host 1 Port Range -

Host 2 IP Range -

Host 2 Port Range -

QoS Rules List

| Name | Priority | Host 1 IP Range | Host 2 IP Range | Protocol / Ports | Edit | Del |
|------|----------|-----------------|-----------------|------------------|------|-----|
| | | | | | | |

DAP-2590 - Microsoft Internet Explorer provided by D-Link Australia
 http://192.168.0.50/index.php?uptime=3299

D-Link DAP-2590

Home Maintenance System Logout Help

DAP-2590

- Basic Settings
- Advanced Settings
 - Performance
 - Multi-SSID
 - VLAN
 - Intrusion
 - Schedule
 - QoS
- DHCP Server
 - Dynamic Pool Setting
 - Static Pool Setting
 - Current IP Mapping List
- Filters
- Status

Dynamic Pool Settings

DHCP Server Control

Function Enable/Disable Enable

Dynamic Pool Settings

IP Assigned From

The Range of Pool (1-254)

Subnet Mask

Gateway

WINS

DNS

Domain Name

Lease Time (60 - 31536000 sec)

DAP-2590 - Microsoft Internet Explorer provided by D-Link Australia
 http://192.168.0.50/index.php?uptime=3299

D-Link DAP-2590

Home Maintenance System Logout Help

DAP-2590

- Basic Settings
- Advanced Settings
 - Performance
 - Multi-SSID
 - VLAN
 - Intrusion
 - Schedule
 - QoS
- DHCP Server
 - Dynamic Pool Setting
 - Static Pool Setting
 - Current IP Mapping List
- Filters
- Status

Static Pool Settings

DHCP Server Control
 Function Enable/Disable:

Static pool setting

Assigned IP:

Assigned MAC Address: : : : : :

Subnet Mask:

Gateway:

Wins:

DNS:

Domain Name:

| MAC Address | IP Address | Edit | Delete |
|-------------|------------|------|--------|
| | | | |

DAP-2590 - Microsoft Internet Explorer provided by D-Link Australia
 http://192.168.0.50/index.php?uptime=3299

D-Link DAP-2590

Home Maintenance System Logout Help

DAP-2590

- Basic Settings
- Advanced Settings
 - Performance
 - Multi-SSID
 - VLAN
 - Intrusion
 - Schedule
 - QoS
- DHCP Server
 - Dynamic Pool Setting
 - Static Pool Setting
 - Current IP Mapping List
- Filters
- Status

Current IP List

Current DHCP Dynamic Pools

| Binding MAC Address | Assigned IP Address | Lease time |
|---------------------|---------------------|------------|
| | | |

Current DHCP Static Pools

| Binding MAC Address | Assigned IP Address |
|---------------------|---------------------|
| | |

DAP-2590 - Microsoft Internet Explorer provided by D-Link Australia

http://192.168.0.50/index.php?uptime=3299

DAP-2590

D-Link DAP-2590

Home Maintenance System Logout Help

- DAP-2590
 - Basic Settings
 - Advanced Settings
 - Performance
 - Multi-SSID
 - VLAN
 - Intrusion
 - Schedule
 - QoS
 - DHCP Server
 - Dynamic Pool Setting
 - Static Pool Setting
 - Current IP Mapping List
 - Filters
 - Wireless MAC ACL
 - WLAN Partition
 - Status

Wireless MAC ACL Settings

Wireless Band: 2.4GHz

Access Control List: Disable

MAC Address: [Disable] [Accept] [Reject] [Add]

| ID | MAC Address | Delete |
|----|-------------|--------|
| | | |

Current Client Information

| MAC Address | SSID | Band | Authentication | Signal | Add |
|-------------|------|------|----------------|--------|-----|
| | | | | | |

Apply

DAP-2590 - Microsoft Internet Explorer provided by D-Link Australia

http://192.168.0.50/index.php?uptime=3299

DAP-2590

D-Link DAP-2590

Home Maintenance System Logout Help

- DAP-2590
 - Basic Settings
 - Advanced Settings
 - Performance
 - Multi-SSID
 - VLAN
 - Intrusion
 - Schedule
 - QoS
 - DHCP Server
 - Dynamic Pool Setting
 - Static Pool Setting
 - Current IP Mapping List
 - Filters
 - Wireless MAC ACL
 - WLAN Partition
 - Status

Wireless Partition

Wireless Band: 2.4GHz

Internal Station Connection: Enable

Ethernet to WLAN Access: Enable

Apply

DAP-2590 - Microsoft Internet Explorer provided by D-Link Australia

http://192.168.0.50/index.php?uptime=3299

DAP-2590

D-Link DAP-2590

Home Maintenance System Logout Help

- DAP-2590
 - Basic Settings
 - Advanced Settings
 - Performance
 - Multi-SSID
 - VLAN
 - Intrusion
 - Schedule
 - QoS
 - DHCP Server
 - Dynamic Pool Setting
 - Static Pool Setting
 - Current IP Mapping List
 - Filters
 - Wireless MAC ACL
 - WLAN Partition
 - Status
 - Device Information
 - Client Information
 - WDS Information
 - Stats
 - Log

Device Information

Firmware Version:1.00

Ethernet MAC Address: 00:20:b0:11:c6:d8
 Wireless MAC Address: Primary: 00:20:b0:11:c6:d8
 SSID 1~7: 00:20:b0:11:c6:d9 ~ 00:20:b0:11:c6:df

Ethernet

IP Address: 192.168.0.50
 Subnet Mask: 255.255.255.0
 Gateway: N/A

Wireless (2.4GHz)

Network Name (SSID): dlink
 Channel: 11
 Data Rate: Auto
 Security: WPA2-Auto-Personal / Auto

Device Status

CPU Utilization: 4%
 Memory Utilization: 36%

DAP-2590 - Microsoft Internet Explorer provided by D-Link Australia

http://192.168.0.50/index.php?uptime=3299

DAP-2590

D-Link DAP-2590

Home Maintenance System Logout Help

- DAP-2590
 - Basic Settings
 - Advanced Settings
 - Performance
 - Multi-SSID
 - VLAN
 - Intrusion
 - Schedule
 - QoS
 - DHCP Server
 - Dynamic Pool Setting
 - Static Pool Setting
 - Current IP Mapping List
 - Filters
 - Wireless MAC ACL
 - WLAN Partition
 - Status
 - Device Information
 - Client Information
 - WDS Information
 - Stats
 - Log

Client Information

Client Information Station association (2.4GHz) : 0

| SSID | MAC | Band | Authentication | Signal | Power Saving Mode |
|------|-----|------|----------------|--------|-------------------|
| | | | | | |

DAP-2590 - Microsoft Internet Explorer provided by D-Link Australia

http://192.168.0.50/index.php?uptime=3299

DAP-2590

D-Link DAP-2590

Home Maintenance System Logout Help

- DAP-2590
 - Basic Settings
 - Advanced Settings
 - Performance
 - Multi-SSID
 - VLAN
 - Intrusion
 - Schedule
 - QoS
 - DHCP Server
 - Dynamic Pool Setting
 - Static Pool Setting
 - Current IP Mapping List
 - Filters
 - Wireless MAC ACL
 - WLAN Partition
 - Status
 - Device Information
 - Client Information
 - WDS Information
 - Stats
 - Log

WDS Information

WDS Information Channel : 11 (2.462 GHz)

| Name | MAC | Authentication | Signal | Status |
|------|-----|----------------|--------|--------|
| | | | | |

DAP-2590 - Microsoft Internet Explorer provided by D-Link Australia

http://192.168.0.50/index.php?uptime=3299

DAP-2590

D-Link DAP-2590

Home Maintenance System Logout Help

- DAP-2590
 - Basic Settings
 - Advanced Settings
 - Performance
 - Multi-SSID
 - VLAN
 - Intrusion
 - Schedule
 - QoS
 - DHCP Server
 - Dynamic Pool Setting
 - Static Pool Setting
 - Current IP Mapping List
 - Filters
 - Wireless MAC ACL
 - WLAN Partition
 - Status
 - Device Information
 - Client Information
 - WDS Information
 - Stats
 - Ethernet
 - WLAN
 - Log

Ethernet Traffic Statistics

Clear Refresh

Transmitted Count

| | |
|--------------------------|---------|
| Transmitted Packet Count | 10761 |
| Transmitted Bytes Count | 3037666 |
| Dropped Packet Count | 0 |

Received Count

| | |
|---------------------------------|---------|
| Received Packet Count | 10740 |
| Received Bytes Count | 1427566 |
| Dropped Packet Count | 0 |
| Received Multicast Packet Count | 309 |
| Received Broadcast Packet Count | 1294 |
| Length 64 Packet Count | 4896 |
| Length 65~127 Packet Count | 5021 |
| Length 128~255 Packet Count | 93 |
| Length 256~511 Packet Count | 285 |
| Length 512~1023 Packet Count | 158 |
| Length 1024~1518 Packet Count | 287 |
| Length 1519~MAX Packet Count | 0 |

DAP-2590 - Microsoft Internet Explorer provided by D-Link Australia

http://192.168.0.50/index.php?uptime=3299

DAP-2590

D-Link DAP-2590

Home Maintenance System Logout Help

- DAP-2590
 - Basic Settings
 - Advanced Settings
 - Performance
 - Multi-SSID
 - VLAN
 - Intrusion
 - Schedule
 - GoS
 - DHCP Server
 - Dynamic Pool Setting
 - Static Pool Setting
 - Current IP Mapping List
 - Filters
 - Wireless MAC ACL
 - WLAN Partition
 - Status
 - Device Information
 - Client Information
 - WDS Information
 - Stats
 - Ethernet
 - WLAN
 - Log

WLAN Traffic Statistics

Clear Refresh

| Transmitted Count | |
|---------------------------------|---------|
| Transmitted Packet Count | 20234 |
| Transmitted Bytes Count | 196758 |
| Dropped Packet Count | 0 |
| Transmitted Retry Count | 0 |
| Received Count | |
| Received Packet Count | 20251 |
| Received Bytes Count | 2384440 |
| Dropped Packet Count | 0 |
| Received CRC Count | 4498 |
| Received Decryption Error Count | 0 |
| Received MIC Error Count | 0 |
| Received PHY Error Count | 0 |

DAP-2590 - Microsoft Internet Explorer provided by D-Link Australia

http://192.168.0.50/index.php?uptime=3299

DAP-2590

D-Link DAP-2590

Home Maintenance System Logout Help

- DAP-2590
 - Basic Settings
 - Advanced Settings
 - Performance
 - Multi-SSID
 - VLAN
 - Intrusion
 - Schedule
 - GoS
 - DHCP Server
 - Dynamic Pool Setting
 - Static Pool Setting
 - Current IP Mapping List
 - Filters
 - Wireless MAC ACL
 - WLAN Partition
 - Status
 - Device Information
 - Client Information
 - WDS Information
 - Stats
 - Ethernet
 - WLAN
 - Log
 - View Log
 - Log Settings

View Log

First Page Last Page Previous Next Clear

Page 1 of 1

| Time | Priority | Message |
|-----------------------|------------|--|
| Uptime 0 day 00:52:43 | [Wireless] | Initiate Wireless success |
| Uptime 0 day 00:47:44 | [Wireless] | Initiate Wireless success |
| Uptime 0 day 00:41:20 | [SYSACT] | Web login success from 192.168.0.149 |
| Uptime 0 day 00:40:50 | [SYSACT] | Web logout from 192.168.0.149 |
| Uptime 0 day 00:36:34 | [Wireless] | Initiate Wireless success |
| Uptime 0 day 00:35:52 | [SYSACT] | Web login success from 192.168.0.149 |
| Uptime 0 day 00:35:47 | [SYSACT] | Web login failure from 192.168.0.149 |
| Uptime 0 day 00:28:51 | [Wireless] | Received disassociate:STA 00:20:B0:11:C6:D8 (reason 1) |
| Uptime 0 day 00:28:51 | [Wireless] | Received disassociate:STA 00:0E:35:EB:96:B3 (reason 1) |
| Uptime 0 day 00:28:32 | [Wireless] | Association Success:STA 00:0E:35:EB:96:B3 |
| Uptime 0 day 00:19:13 | [Wireless] | Deauth:STA 00:19:D2:8F:CE:B6(reason 2) |
| Uptime 0 day 00:09:34 | [Wireless] | Association Success:STA 00:19:D2:8F:CE:B6 |
| Uptime 0 day 00:00:14 | [Wireless] | Initiate Wireless success |
| Uptime 0 day 00:00:06 | [Notice] | Ethernet ETH0 LINK UP |

DAP-2590 - Microsoft Internet Explorer provided by D-Link Australia

http://192.168.0.50/index.php?uptime=3299

DAP-2590

D-Link DAP-2590

Home Maintenance System Logout Help

- DAP-2590
 - Basic Settings
 - Advanced Settings
 - Performance
 - Multi-SSID
 - VLAN
 - Intrusion
 - Schedule
 - GoS
 - DHCP Server
 - Dynamic Pool Setting
 - Static Pool Setting
 - Current IP Mapping List
 - Filters
 - Wireless MAC ACL
 - WLAN Partition
 - Status
 - Device Information
 - Client Information
 - WDS Information
 - Stats
 - Ethernet
 - WLAN
 - Log
 - View Log
 - Log Settings

Log Settings

Log Settings

Log Server / IP Address

Log Type System Activity
 Wireless Activity
 Notice

Email Notification

Email Notification Enable

From Email Address

To Email Address

Email Server Address

SMTP Port

User Name

Password

Confirm Password

Email Log Schedule

Schedule hours or when Log is full

Apply