



**MAXIMUM PC Award** July 2003



DCF-660W CompactFlash Type I card (left) and DCF-660W/K kit with PCMCIA converter that plugs this CompactFlash card to a network PC (right)

## CompactFlash Card Type I for PDAs Connecting Pocket PCs to Wireless Network

*The DCF-660W D-LinkAir CompactFlash card is a wireless LAN card that brings true mobility to your pocket and handheld PCs. With interoperability, reliable speed and affordable price, this wireless LAN CompactFlash card offers all the benefits of a traditional wired Ethernet network, plus the advantage of being wireless. This card lets you stay connected while you're moving around with your PDA to work, send/view e-mail and access server data, all without the need to hook up to any network wires.*

### Network Industry Standard Compliance

Complying with IEEE 802.11b industry standard, the DCF-660W operates at the 2.4GHz frequency range and interoperates with all IEEE 802.11b equipment. Ethernet-based network access from your PDA is also possible through IEEE 802.11b Access Points.

### Compatible With Wide Range of Pocket PCs

Designed as a Type I CompactFlash, the DCF-660W plugs into any pocket or handheld PC equipped with a Type I slim expansion slot, or a Type II expansion slot. The DCF-660W has been tested to operate with a long list of PDAs, including Compaq IPAQ series, Casio pocket PCs, HP Jornada, Sharp Telios and Intel Pentium/X86 pocket PCs.

### Network Security

Security is an issue when data is transmitted without the wires. In the air, transmitted data can be easily intercepted if not well protected by a security scheme. The DCF-660W provides the necessary security, using the industry-standard 64/128-bit WEP (Wired Equivalent Privacy) encryption protocol. Data privacy mechanism is based on a shared key algorithm, as described in the wireless LAN standards.

### PCMCIA Converter to Work With Notebook PCs

A kit that includes a PCMCIA converter is available to allow you to plug the DCF-660W to a notebook PC to connect it to a wireless LAN. With this, your CompactFlash card works not only with your pocket PC but also with your notebook and laptop computer. Drivers for Windows XP, ME, 2000 and 98 are provided.

### Features

- Wireless LAN connection for Windows-based pocket PCs
- CompactFlash interface to host
- Up to 11Mbps transmission
- IEEE 802.11b (DSSS) 2.4GHz standard
- Solid design with integrated antenna
- Seamless roaming from cell to cell and across Access Points
- Ad-hoc and infrastructure communication
- Supports communication with wired Ethernet network via Access Points
- 128-bit data encryption security
- Up to 400 m operation range
- Runs Windows CE/Pocket PC 2002
- Optional PCMCIA converter (works with Windows 98, 2000, ME, XP)

# DCF-660W

## Technical Specifications

## 2.4GHz Wireless LAN CompactFlash

### Standard

IEEE 802.11b wireless LAN

### CompactFlash Interface

Type I CF+/CompactFlash 1.4

### Data Rate & Modulation

- 11Mbps: CCK
- 5.5Mbps: CCK
- 2Mbps: DQPSK
- 1Mbps: DBPSK
- Auto fall-back

### Network Architecture Types

- Supports Ad-Hoc and Infrastructure Modes
- Cell to cell roaming (IEEE 802.11b compliant)

### Operating Channels

- North America (FCC): 11
- Europe: 13 (ETSI)

### Sensitivity @ PER<0.08

- 11Mbps < -83dBm
- 5.5Mbps < -86dBm
- 2 Mbps < -89dBm
- 1 Mbps < -91dBm

### Frequency Range

2.412 - 2.472 GHz Direct Sequence Spread Spectrum (DSSS)

### Antenna

PIFA (Patched Inverse "F" Antenna) Type Antenna

### Range Coverage (Open Environment)

- 460 feet (140 m) @ 11Mbps
- 656 feet (200 m) @ 5.5Mbps
- 885 feet (270 m) @ 2Mbps
- 1311 feet (400 m) @ 1Mbps

### Data Security

64/128-bit WEP (Wired Equivalent Privacy) encryption

### Physical & Environmental

#### Diagnostic LED

Link/Power

#### Output Power

12 dBm

#### Voltage

3.3 VDC  $\pm$  5%

#### Power Consumption

- Transmission: < 350mA
- Reception: < 250mA
- Sleep mode: 80mA

#### Operating Temperature

0° - 55° C (32° - 131°F)

#### Storage Temperature

-20° - 80° C (-4° - 176°F)

#### Humidity

5% - 90% non-condensing

#### Dimensions

113 (L) x 54 (W) x 5.3 (H) mm  
(4.45 x 2.13 x 0.21 inches)

#### Weight

20 grams (0.04 lb.)

#### EMI Certification

- FCC Class B
- CE Class B

### Compatibility

#### Compatible PCs

- Pocket PCs:

Compaq IPAQ 36xx/37xx/38xx series (CPU: Strong ARM)  
Casio E125, E200, BE300, BE500 (MIPS R4000)  
HP Jornada 535, 540, 548 (CPU: SH3), 565 (Strong ARM SA1110)

- Handheld PCs:

Sharp Telios (MIPS R3000)  
HP Jornada 720 (Strong ARM)  
Intel Pentium/X86 CPU

### Compatible Certification

Wi-Fi™

### Supported OS

#### For PDAs

Windows CE version 3.0, Pocket PC 2002

#### For Notebook PCs

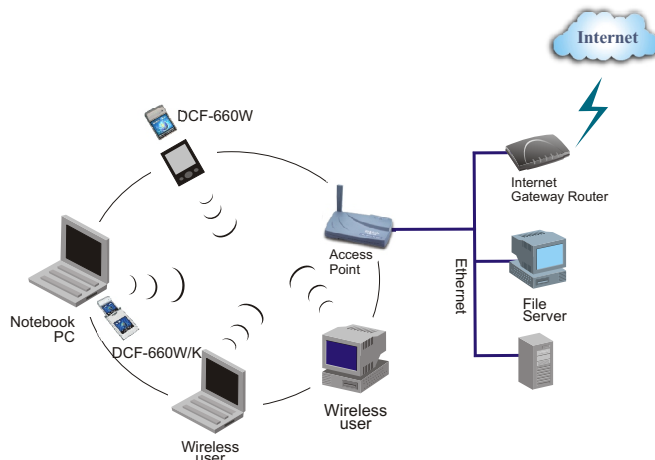
Windows 98, 2000, ME, XP (available with DCF-660W/K PCMCIA kit)



### Ordering Information

**DCF-660W** Wireless LAN CompactFlash Type I Card

**DCF-660W/K** Wireless LAN CompactFlash Type I Card with PCMCIA Converter Kit



# D-Link®

Specifications subject to change without prior notice.  
D-Link is a registered trademark of D-Link Corporation/D-Link System Inc. All other trademarks belong to their proprietors.

<b>U.S.A</b>	TEL: 1-949-788-0805	FAX: 1-949-753-7033
<b>Canada</b>	TEL: 1-905-8295033	FAX: 1-905-8295095
<b>Europe</b>	TEL: 44-20-8731-5555	FAX: 44-20-8731-5511
<b>Germany</b>	TEL: 49-6196-77990	FAX: 49-6196-7799300
<b>France</b>	TEL: 33-1-30238688	FAX: 33-1-30238689
<b>Benelux</b>	TEL: 31-10-2045740	FAX: 31-10-2045880
<b>Italy</b>	TEL: 39-2-2900-0676	FAX: 39-2-2900-1723
<b>Iberia</b>	TEL: 34-93-4090770	FAX: 34-93-4910795
<b>Sweden</b>	TEL: 46-(0)8564-61900	FAX: 46-(0)8564-61901
<b>Norway</b>	TEL: 47-22-309075	FAX: 47-22-309085
<b>Denmark</b>	TEL: 45-43-969040	FAX: 45-43-424347
<b>Finland</b>	TEL: 358-9-2707-5080	FAX: 358-9-2707-5081
<b>Singapore</b>	TEL: 65-6774-6233	FAX: 65-6774-6322
<b>Australia</b>	TEL: 61-2-8899-1800	FAX: 61-2-8899-1868
<b>Japan</b>	TEL: 81-3-5434-9678	FAX: 81-3-5434-9868
<b>China</b>	TEL: 86-10-8518-2533	FAX: 86-10-8518-2250
<b>India</b>	TEL: 91-22-652-6696	FAX: 91-22-652-8914
<b>Middle East</b>	TEL: 9714-8834234	FAX: 9714-8834394
<b>Turkey</b>	TEL: 90-212-335-2553	FAX: 90-212-335-2500
<b>Chile</b>	TEL: 56-2-232-3185	FAX: 56-2-232-0923
<b>Brasil</b>	TEL: 55-11-3094-2910	FAX: 55-11-3094-2921
<b>South Africa</b>	TEL: 27(0)1266-52165	FAX: 27(0)1266-52186
<b>Russia</b>	TEL: 7-095-737-3389	FAX: 7-095-737-3390
<b>Taiwan</b>	TEL: 886-2-2910-2626	FAX: 886-2-2910-1515
<b>D-Link Corp.</b>	TEL: 886-2-2916-1600	FAX: 886-2-2914-6299



RECYCLABLE  
Rev. 02 (Aug. 2003)