

D-ViewCam

Standard/Professional/Enterprise

Quick Install Guide

Business Class Networking

System Requirements

To ensure your D-ViewCam Standard/Professional/Enterprise system can maintain high video monitoring and recording performance, certain minimum system configurations are required.

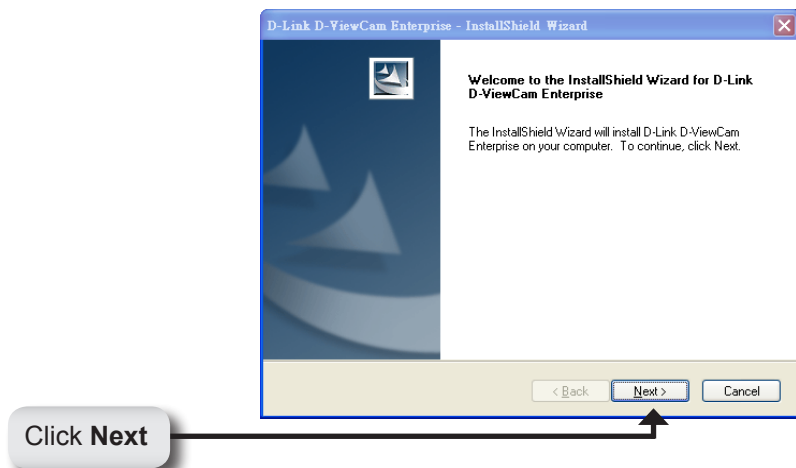
Total FPS at CIF	D	C	B	A
S of All Cam.	2200~1400	1400~1050	1050~550	550~0
CPU	Intel Core I7	Intel Core I5	Intel Core 2 Quad Q9400	Intel Core 2 Duo E5300
RAM	2 GB	2 GB	2 GB	1 GB
Motherboard	Intel P55 or H57 chip or above, MB vendor Asus, Gigabyte or Intel with Intel Chipset recommended		Intel P35 or P33 chip or above, MB vendor Asus, Gigabyte or Intel with Intel Chipset recommended	
Display card	ATI Radeon 4650 , nVIDIA GeForce GF-9600 or above (ATI recommended)			
Ethernet	100 baseT or above, Gigabit LAN recommended			
Hard Disk	250 GB or above			
OS	Microsoft Windows® XP Professional SP3 / 2003 / Vista® / Server 2008 R2 (64bits) /Win 7 (32bit/64bits)			

*Recording video over a long period of time will consume large amounts of disk space. Make sure that you have enough disk space available if you want to use the recording function. You can still complete the installation even if you have less than the suggested free disk space.

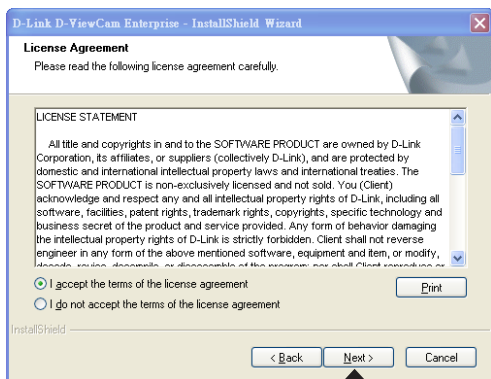
D-ViewCam Standard/Professional/Enterprise Installation

Insert the D-ViewCam Standard/Professional/Enterprise CD into your computer's CD-ROM drive to begin the installation. If the Autorun function on your computer is disabled, or if the D-Link Launcher fails to start automatically, click **Start > Run**. Type **D:\autorun.exe**, where D: represents the drive letter of your CD-ROM drive.

In the **InstallShield Wizard** screen, click **Install D-ViewCam Standard/Professional/Enterprise Software** and then select **Language** to continue.

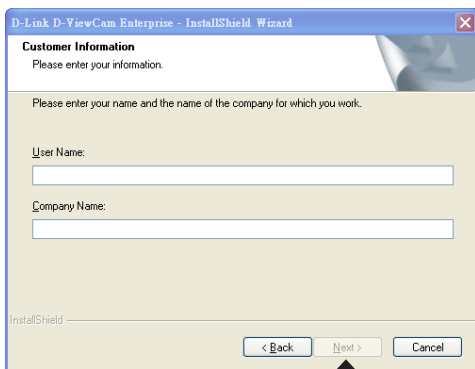


Select **I accept the terms of the license agreement**. Click **Next** to continue.



Click Next

Enter the **User Name** and your **Company Name**. Click **Next** to continue.



Click Next

Select **Complete** or **Custom Setup Type** to install the System.

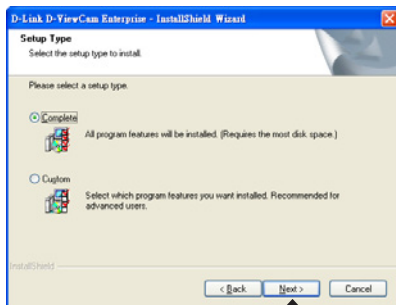


Click **Next**

COMPLETE SETUP TYPE

Select **Complete** to install all the program features into the default directory (requires the most disk space).

Click **Next** to continue.

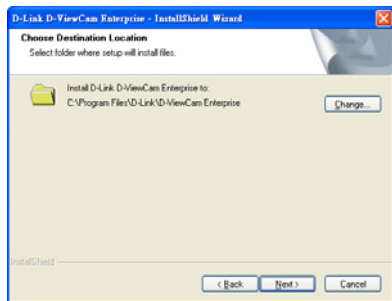


Click **Next**

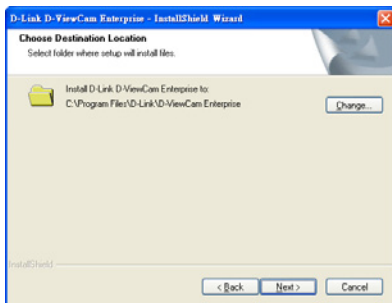
CUSTOM SETUP TYPE

Select **Custom** to install the system to a preferred directory. This option allows you to select the program feature(s) for installation. This is recommended for advanced users.

Select **Custom**, and then click **Next**. The **Choose Destination Location** screen displays.

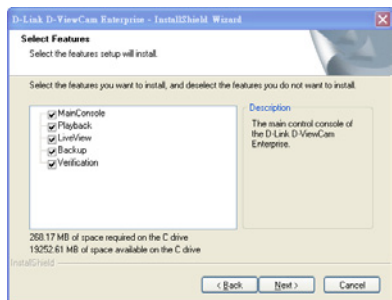


To install to this folder click **Next**.
To install to a different folder,
click **Change** and select another
folder.

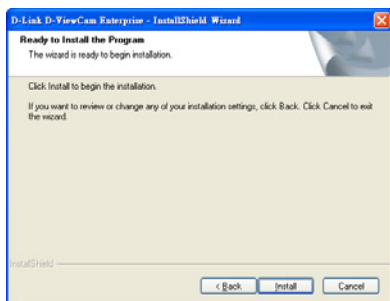


Select the features you want to install and click **Next** to continue.
The five main features in the
server setup process are:

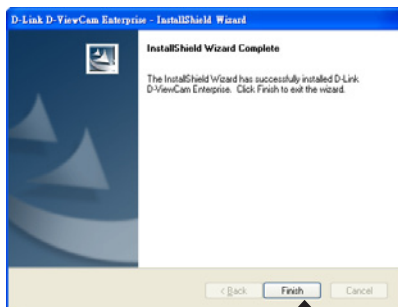
- MainConsole
- Playback
- LiveView
- Backup
- Verification



Click **Install** to start the installation.



Click **Finish** to complete the installation.



Click **Finish**

D-Link[®]



Ver. 1.10(WW)
2011/04/28