

Product Highlights

Intuitive and Easy to Use

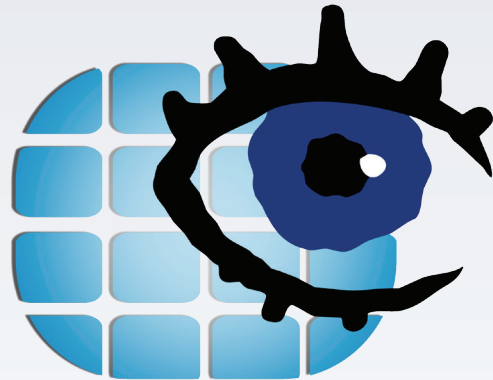
Manage up to 64 network cameras¹ on one screen with a user interface that is simple and easy to use

Multiple -Channel Playback

View and replay high quality real-time video from multiple channels

Pan/Tilt/Zoom Controls

Enable high resolution monitoring while expanding your survey area with motorized pan/tilt



D-ViewCam



DCS-210/220/230

D-ViewCam Standard/Professional/Enterprise

Features

Video and Camera Support

- Supports 8, 32, or 64 cameras¹
- Supports all D-Link cameras
- Connect to D-Link NVR devices to view videos through Remote Live Viewer
- MJPEG/MPEG-4/H.264 compression format
- Megapixel network camera support
- 30 FPS maximum recording per camera
- Intelligent search tool for quick and accurate searching of video footage

Pan/Tilt/Zoom Control

- Auto pan for more convenient usage
- Manual control for personalized control
- Preset positions and patrolling for effective camera monitoring

Ease of Use

- Multilingual support
- Live monitoring
- Automatic discovery of network cameras
- Alarm status for easy and instant response whenever an event occurs
- Remote playback/web playback support
- Video playback control

The DCS-210/220/230 D-ViewCam Standard/Professional/Enterprise is a comprehensive network camera surveillance software designed for enterprise users. It centrally manages 8, 32, or 64 network cameras¹ and is compatible with current D-Link network cameras and video servers. This software offers digital monitoring and recording of video, audio, and events for use in various security applications. Furthermore, this easy-to-use surveillance software provides users with a wide array of features, including video recording, playback, and live view.

Live Monitoring & Centralized Management

The DCS-210/220/230 is a comprehensive surveillance system designed to centrally manage up to 8, 32, or 64 network cameras, while displaying real-time status information. Map Mode allows you to create maps based on camera location and orientation, and the Device Tree lists all the cameras connected to the interface for easy viewing. Additional features such as patrol, rotate, zoom, and focus provide users with optimal control over their video surveillance.

Video Recording & Playback

The D-ViewCam Standard/Professional/Enterprise offers scheduled, motion, and manual recording options to meet specific user demands. Recorded files can be searched according to video type or selected within the user interface for playback, editing, or AVI/ASF file conversion.

Event Action Configuration

Event Action provides enhanced surveillance and security by detecting events from smoke detectors, magnetic door sensors, emergency buttons, cameras, card readers, or other I/O devices. Connect any of these devices to the I/O connector of a compatible D-Link network camera so that, when an event triggers a device, a notification is immediately sent to the D-ViewCam Standard/Professional/Enterprise software. The D-ViewCam Standard/Professional/Enterprise then notifies you either by e-mail or an audio alert.

D-ViewCam Standard/Professional/Enterprise

Video & System Database Backup

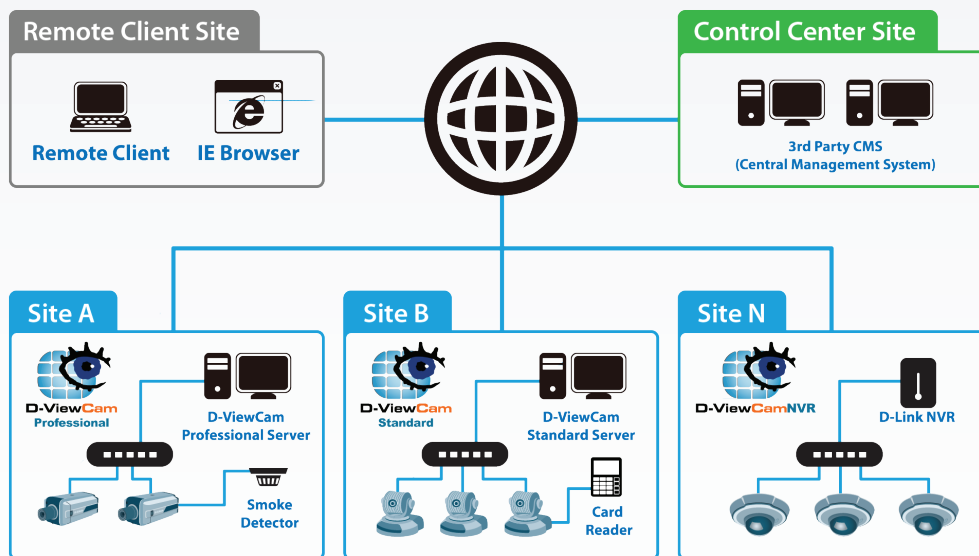
The D-ViewCam Standard/Professional/Enterprise Playback function allows users to load and play a recorded file on a Windows PC. It allows users to monitor a live feed on one computer while watching a recorded file on another. D-ViewCam Standard/Professional/Enterprise also provides a utility (DBTool) to reconstruct, repair, or relocate the databases in a local drive or external drive. It also supports the import/export of configuration files – enabling users to synchronize surveillance settings across devices.

Compatible with 3rd Party CMS

A Central Management System (CMS) can manage an unlimited number of network cameras worldwide, allowing simultaneous operation by unlimited workstations. A CMS is considered to be the omni-solution for large-scale projects, such as defense installations, justice facilities, security companies, city surveillance, and national and international enterprises. To meet these needs, D-ViewCam Standard/Professional/Enterprise can be integrated with an existing 3rd party CMS to provide a flexible surveillance solution.

Your Network Setup

D-ViewCam Standard/Professional/Enterprise



Technical Specifications

General

Camera Support	<ul style="list-style-type: none"> • Supports up to 8, 32, or 64 cameras¹ 	<ul style="list-style-type: none"> • Megapixel network camera support
Video Comprehension	<ul style="list-style-type: none"> • MJPEG/MPEG-4/H.264 Compression format 	
Software Features	<ul style="list-style-type: none"> • Dual monitor support • Widescreen support • OSD (On-screen Display) setting • Live Monitoring • 30 FPS maximum recording per camera (subject to camera and video server capacity) • Automatic discovery of network cameras 	<ul style="list-style-type: none"> • Multilingual support • On-the-fly configuration changes • Auto reboot function support • System DDNS support • SMS alert • Lock system to avoid unauthorized changes
System User Management	<ul style="list-style-type: none"> • User Validation • User Password Restriction 	<ul style="list-style-type: none"> • User Profiling • Access Privilege Control

Performance

Recording	<ul style="list-style-type: none"> • Supports multiple storage locations • Record by schedule • Record by event • Digital watermark protection • Supports Flexible Recycle 	<ul style="list-style-type: none"> • Pre-record/Post-record support • Manual recording support • One-way audio recording of multiple channels • Record and live display at different frame rates and resolution
-----------	---	---

D-ViewCam Standard/Professional/Enterprise

Data Search and Playback	<ul style="list-style-type: none"> • Video playback control • Smart Search support • Histogram quick search method for videos • Video stamp 	<ul style="list-style-type: none"> • Extract snapshots from video • Extract video to AVI/ASF • Supports remote playback/web playback
Video Mode	<ul style="list-style-type: none"> • Screen division layout support • Monitor display allows for drag and drop of videos • Supports full screen video • Information window support • Multiple channel playback support 	<ul style="list-style-type: none"> • Enable Move function to control a P/T/Z camera • Digital zoom in/out support • Duplicate Camera • Supports remote live viewing to display video • Supports camera multi-stream (model-dependent)
Map Mode	<ul style="list-style-type: none"> • Multiple map support • Alarm notification • Customized map background support 	<ul style="list-style-type: none"> • Camera preview • Camera and I/O indicator
P/T/Z Control	<ul style="list-style-type: none"> • Auto pan • Manual control • Preset positions (device dependent) 	<ul style="list-style-type: none"> • Preset patrolling • Multiple patrol group support
I/O Feature	<ul style="list-style-type: none"> • Output port control • Input port trigger on event • Output port relay when an event is detected • Digital Input Trigger Preset Go 	<ul style="list-style-type: none"> • Digital Input Trigger SMS • Digital Input Trigger CMS • E-mail notifications
Backup	<ul style="list-style-type: none"> • Backup database for logs and videos • Import/Export configuration 	<ul style="list-style-type: none"> • Burn backup files to DVDs on Windows XP • Auto backup
Compatibility	<ul style="list-style-type: none"> • ONVIF support • Device Pack support • Compatible with D-Link NVR • Compatible with 3rd Party CMS 	<ul style="list-style-type: none"> • D-Link DWM-152-A3/156-A3/156-A6 3.5G/3.75G adapter support • All D-Link network cameras (visit www.dlink.com for more information)
Tools	<ul style="list-style-type: none"> • Remote Live Viewer • Playback System • Backup System 	<ul style="list-style-type: none"> • DB Tool • Verification Tool • Remote Desktop Viewer
Minimum System Requirements²		
CPU	• Intel Core 2 Duo E5300	
RAM	• 2 GB	
Motherboard	• Intel P55, H55, X58, P45, P43 chip, MB vendor ASUS Gigabyte or MSI with Intel Chipset recommended	
Display Card	• ATI Radeon 4650 or above (ATI Driver V11-2 recommended)	
Ethernet	• 100Base-T or above, Gigabit LAN recommended	
Hard Disk ³	• 250 GB or above	
OS	<ul style="list-style-type: none"> • 32 bits: MS Windows XP pro SP3/ Vista SP1/ Win 7 SP1/ Win 8 	<ul style="list-style-type: none"> • 64 bits: Win 7 SP1/ Win Server 2008 R2/Win 8/Win 10/ Win Server 2012
Order Information		
<i>Part Number</i>	<i>Description</i>	
DCS-210	D-ViewCam Standard	
DCS-220	D-ViewCam Professional	
DCS-230	D-ViewCam Enterprise	

¹ The DCS-230 supports up to 64 cameras. The DCS-220 supports up to 32 cameras while the DCS-210 supports up to 8 cameras.

² To determine the minimum hardware requirements for your planned surveillance system if it is not listed in the above table, please consult the SI (system integrator), the reseller, or D-Link Technical Support.

³ Recording video over a long period of time will consume large amounts of disk space. Make sure that you have enough disk space if you want to use the recording function.

Updated 04/27/16