

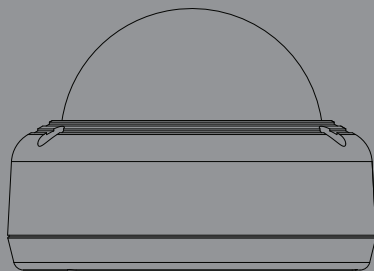


Quick Installation Guide

Vigilance Full HD Outdoor Vandal-Proof PoE Dome Camera

This document will guide you through the basic installation process for your new D-Link Network Camera.

DCS-4602EV



Quick Installation Guide
Installationsanleitung
Guide d'installation
Guía de instalación
Guida di Installazione
Краткое руководство по установке
Guia de Instalação Rápida
快速安裝指南
Petunjuk Pemasangan Cepat

Documentation also available on
CD and via the D-Link Website

Quick Installation Guide

This installation guide provides basic instructions for installing the Network Camera on your network. For additional information about how to use the camera, please see the User Manual which is available on the CD included in this package or from the D-Link support website.

Package Contents

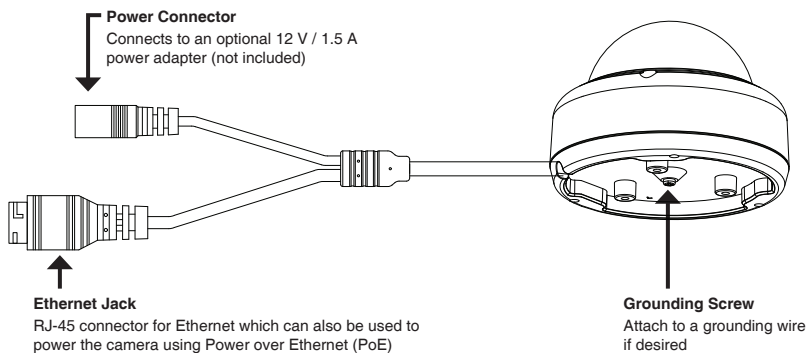
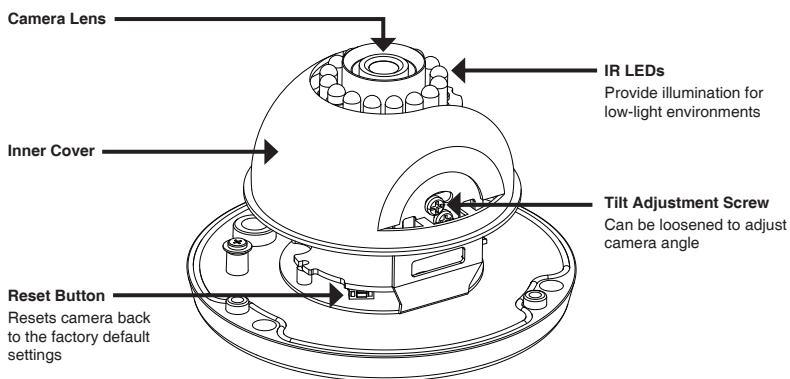
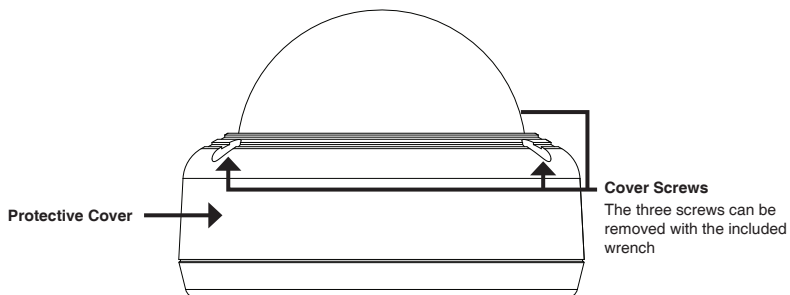
- DCS-4602EV Vigilance Full HD Outdoor Vandal-Proof PoE Dome Camera
- Cable Waterproofing Connector
- Rubber Power Connector Plug
- Mounting Kit
- Manual and Software on CD-ROM
- Quick Installation Guide

If any of the above items are missing, please contact your reseller.

Safety Notice:

Installation and servicing should be done by certified technicians so as to conform to all local codes and prevent voiding your warranty.

Hardware Overview



Configuring the Camera

Insert the DCS-4602EV CD into your computer's CD-ROM drive to begin the installation. If the Autorun function on your computer is disabled, or if the D-Link Launcher fails to start automatically, click the Start button and type **D:\autorun.exe** (where D: represents the drive letter of your CD-ROM drive) and press Enter.

Click **Setup Wizard** and follow the instructions to install the Setup Wizard.



Click on the **D-Link Setup Wizard SE** icon that was created in your Windows Start menu (**Start > D-Link > Setup Wizard SE**).

The Setup Wizard will appear and display the MAC address and IP address of your camera(s). If you have a DHCP server on your network, a valid IP Address will be displayed. If your network does not use a DHCP server, the network camera's default static IP **192.168.0.20** will be displayed.



Select your camera, then click the **Wizard** button to continue.

Enter the Admin ID and password. When logging in for the first time, the default Admin ID is **admin** with the password left blank.



Click the checkboxes if you wish to change the admin ID and password for the camera, and enter the new ID and password you wish to use.

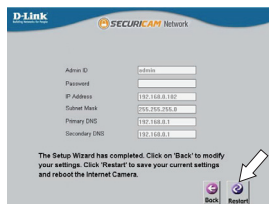
Click **Next** to continue.

Select **DHCP** if your camera obtains an IP address automatically from a DHCP server such as a router. Select **Static IP** if you want to manually enter the IP settings for the camera.



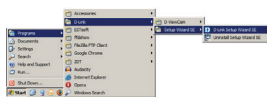
Click **Next** to continue.

Take a moment to confirm your settings and click **Restart**.



Viewing Your Camera via Web Browser

Click on the **D-Link Setup Wizard SE** icon that was created in your Windows Start menu (**Start > D-Link > Setup Wizard SE**).

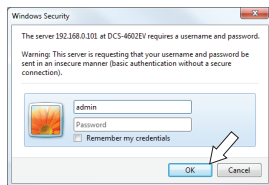


Select the camera and click **Link** to access the web configuration.

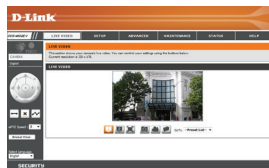


The Setup Wizard will automatically open your web browser to the IP address of the camera.

Enter **admin** as the default username and leave the password blank. Click **OK** to continue.



This section displays your camera's live video. You can select your video profile and view or operate the camera. For additional information about web configuration, please refer to the user manual included on the CD-ROM or the D-Link website.

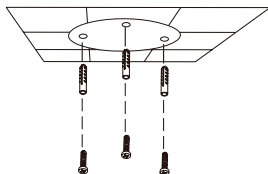


Mounting Instructions

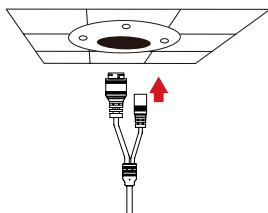
It is highly recommended that you configure and test your camera before mounting it.

Place the mounting sticker where you want to position the camera.

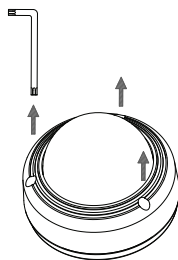
Use a 6 mm drill bit to make the required holes approximately 25 mm deep, then insert the wall anchors into the holes.



If you are running the camera cables through the wall, drill a hole in the center and pull the cables through the hole.

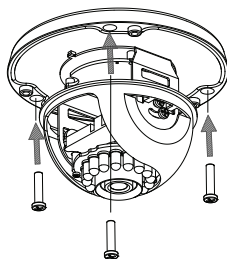


Use the included wrench to loosen the 3 screws on the top of the camera, then lift the camera cover off.

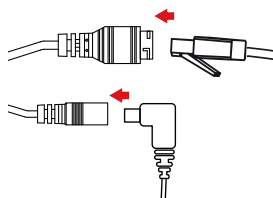


Use the screws provided to mount the camera to the wall.

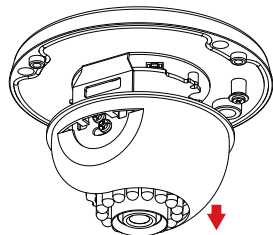
If you are running the camera cables out the side of the camera, guide the camera cables through the cable channel on the base.



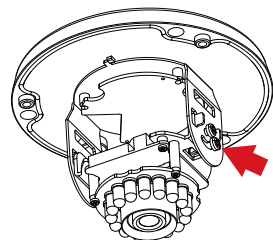
Connect the power and Ethernet cables, or just the Ethernet cable if you are using a PoE connection.



To adjust the camera's angle, pull the black inner cover and remove it from the camera.



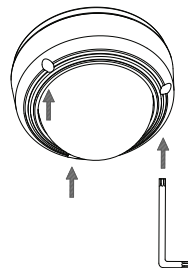
Loosen the adjustment screw on the side of the camera, then retighten it after moving the camera to the desired angle. You can also rotate the camera by grasping the camera and turning it left or right.



When you are done adjusting the camera's angle, put the inner cover back into place.

Note: The camera has a limited range of motion; if it stops when you are adjusting it, do not attempt to rotate or tilt the camera any further in that direction.

Reattach the camera cover.



If you need to waterproof your installation, please continue to the next page.

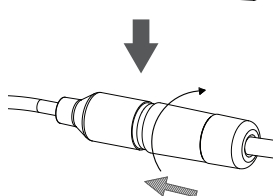
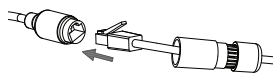
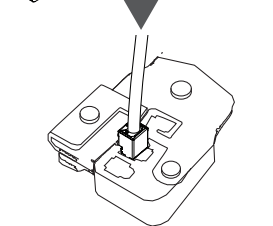
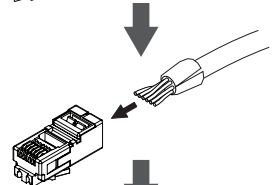
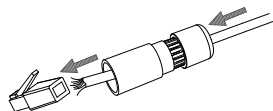
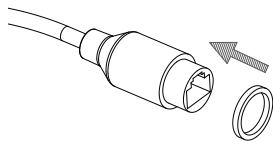
Waterproofing Your Installation

To waterproof your camera installation, follow the instructions below. Round Ethernet cable, a crimping tool, and RJ-45 plugs are required for this procedure.

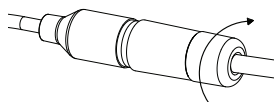
Place the washer around the base of the Ethernet connector as shown.

Thread bare Ethernet cable through the waterproof connector as shown, then crimp an RJ-45 plug onto the cable.

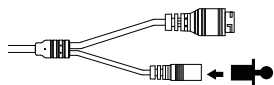
Connect the RJ-45 plug into the Ethernet connector, then screw the waterproof connector to the Ethernet connector by turning it about a half-turn clockwise.



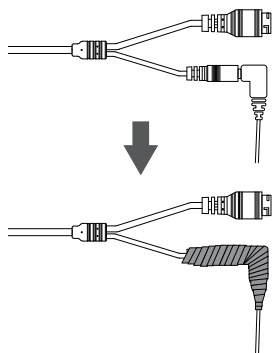
Screw the back part of the waterproof connector clockwise until there is a tight seal around the Ethernet cable.



If you are using PoE to power your camera, use the included rubber power connector plug to the power connector.



If you are using a power adapter(not included) to power your camera, wind waterproof tape around the connection in an overlapping manner to cover it.



Additional Information

Additional help and product information is available online at <http://www.dlink.com>.

Warranty Information

Please visit <http://warranty.dlink.com/> for warranty information for your region.

Installationsanleitung

Diese Installationsanleitung bietet Ihnen grundlegende Anleitungen zur Installation der Netzwerkkamera in Ihrem Netzwerk. Zusätzliche Informationen zur Verwendung der Kamera finden Sie im Benutzerhandbuch, das Ihnen auf der CD, die diesem Paket beiliegt, oder über die D-Link Support-Website zur Verfügung steht.

Packungsinhalt

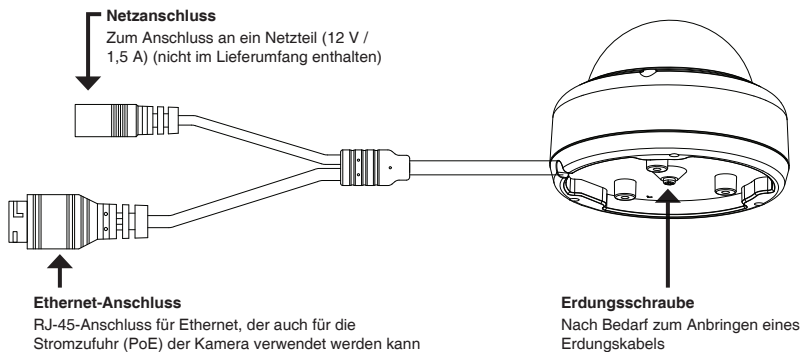
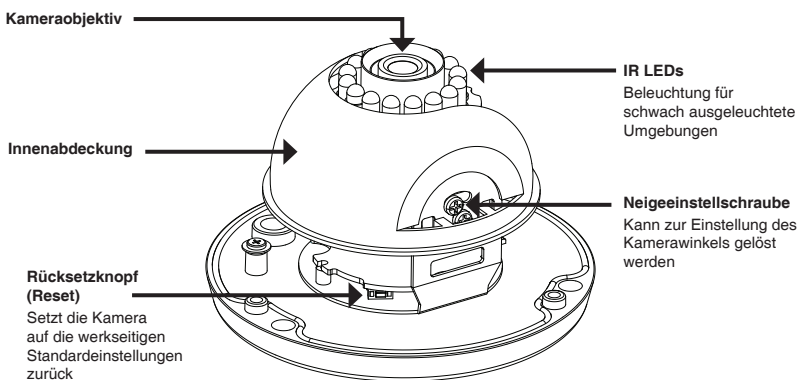
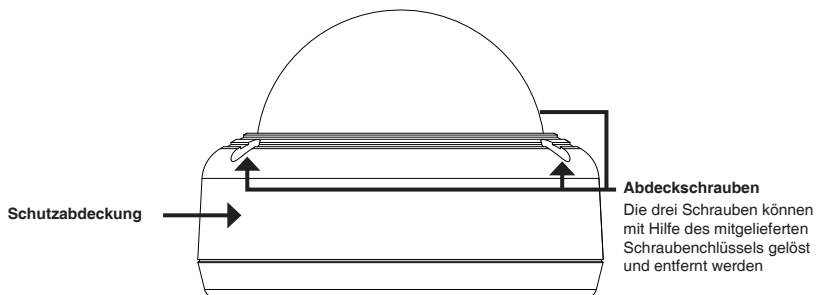
- DCS-4602EV Vigilance Full HD Outdoor Vandal-Proof PoE Dome Camera
- Wasserdichter Anschlussstecker
- Netzanschlussstecker aus Hartgummi
- Montageset
- CD-ROM mit Software und Handbuch
- Installationsanleitung

Sollte einer der oben aufgeführten Artikel fehlen, wenden Sie sich bitte an Ihren Fachhändler.

Sicherheitshinweis:

Installation und Wartungsarbeiten sollten nur von zertifizierten Technikern vorgenommen werden, zu jeder Zeit allen örtlich geltenden Richtlinien und Anforderungen entsprechen sowie verhindern, dass Ihr Garantieanspruch erlischt.

Hardware-Überblick



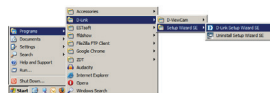
Konfiguration der Kamera

Legen Sie die DCS-4602EV in das CD-ROM-Laufwerk Ihres Computers, um die Installation zu beginnen. Sollte die CD auf Ihrem Computer nicht automatisch ausgeführt werden oder der D-Link Launcher startet nicht automatisch, klicken Sie auf **Start > Ausführen**. Geben Sie **D:\autorun.exe** ein, wobei D: für den Laufwerkbuchstaben Ihres CD-ROM-Laufwerks steht.

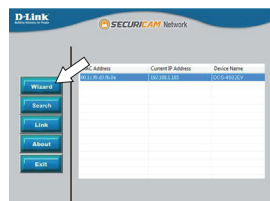
Klicken Sie auf **Setup Wizard** (Setup-Assistenten) und folgen Sie den Anweisungen zu dessen Installation.



Klicken Sie auf das Symbol für den **D-Link Setup-Assistenten SE**, der in Ihrem Windows-Startmenü (**Start > D-Link > Setup Wizard SE**) erstellt wurde.



Der Setup-Assistent wird aufgerufen und zeigt die MAC- und IP-Adresse Ihrer Kamera(s) an. Wenn in Ihrem Netzwerk ein DHCP-Server vorhanden ist, wird eine gültige IP-Adresse angezeigt. Weist Ihr Netzwerk keinen DHCP-Server auf, wird die standardmäßige statische IP-Adresse **192.168.0.20** der Netzwerkkamera angezeigt.



Wählen Sie Ihre Kamera aus und klicken Sie dann auf **Wizard** (Assistent), um fortzufahren.

Geben Sie die Administratorkennung und das Kennwort ein. Bei Erstanmeldung ist die standardmäßige Administratorkennung **admin**. Das Feld zur Eingabe des Kennworts (Password) bleibt leer.

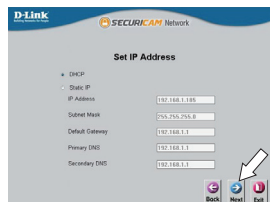


Klicken Sie auf die Kontrollkästchen, wenn Sie die Administratorkennung und das Kennwort für die Kamera ändern möchten. Geben Sie die neue Kennung und das Kennwort ein, das Sie verwenden möchten.

Klicken Sie auf **Next** (Weiter), um fortzufahren.

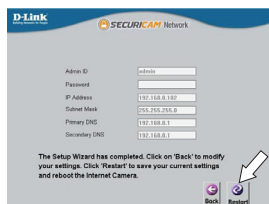
Wählen Sie **DHCP**, wenn Ihrer Kamera automatisch eine IP-Adresse von einem DHCP-Server (wie z. B. einem Router) zugewiesen wird.

Wählen Sie **Static IP** (Statische IP-Adresse), wenn Sie die IP-Einstellungen für die Kamera manuell eingeben möchten.



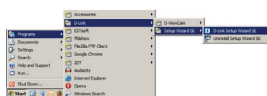
Klicken Sie auf **Next** (Weiter), um fortzufahren.

Prüfen Sie Ihre Einstellungen und klicken Sie dann auf **Restart** (Neustart).



Anzeige Ihrer Kamera über einen Webbrowser

Klicken Sie auf das Symbol für den **D-Link Setup-Assistenten SE**, der in Ihrem Windows-Startmenü (**Start > D-Link > Setup Wizard SE**) erstellt wurde.

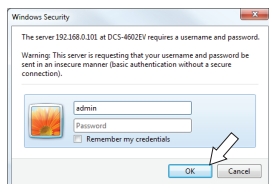


Wählen Sie die Kamera aus und klicken Sie auf **Link**, um auf die Web-Konfiguration zuzugreifen.



Der Setup-Assistent öffnet automatisch Ihren Webbrowser mit der IP-Adresse der Kamera.

Geben Sie als Standard-Benutzernamen **admin** ein und lassen Sie das Feld „Password“ (Kennwort) leer. Klicken Sie auf **OK**, um fortzufahren.



In diesem Abschnitt werden Live-Videoaufnahmen Ihrer Kamera angezeigt. Sie können Ihr Videoprofil auswählen und die Kamera anzeigen und bedienen. Weitere Informationen zur Web-Konfiguration finden Sie in dem auf der CD-ROM enthaltenen Benutzerhandbuch oder auf der D-Link-Website.

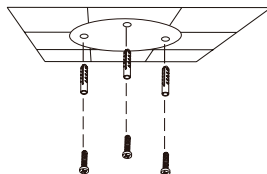


Montageanleitung

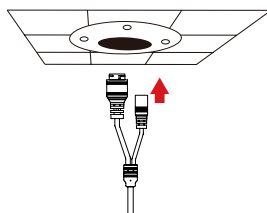
Es ist unbedingt ratsam, zuerst die Kamera zu konfigurieren und zu testen, bevor Sie die Montage der Kamera vornehmen.

Platzieren Sie die Klebeschablone für die Montage dort, wo die Kamera angebracht werden soll.

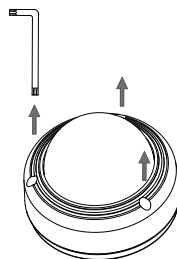
Bohren Sie etwa 25 mm tiefe Löcher mithilfe eines 6 mm Bohreinsatzes. Stecken Sie dann die Dübel in die Löcher.



Sollen die Kamerakabel durch die Wand geführt werden, bohren Sie ein Loch in der Mitte und führen Sie die Kabel hindurch.

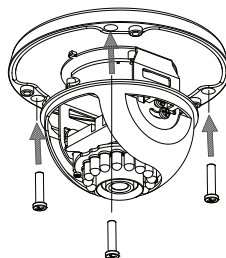


Verwenden Sie den mitgelieferten Schraubenschlüssel, um die drei Schrauben oben auf der Kamera zu lösen. Nehmen Sie dann die Kameraabdeckung ab.

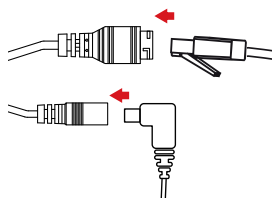


Befestigen Sie die Kamera mithilfe der mitgelieferten Schrauben an der Wand.

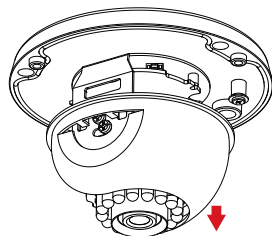
Wenn die Führung der Kamerakabel außerhalb der Kamera erfolgen soll, führen Sie die Kamerakabel durch den Kabelkanal des Sockels.



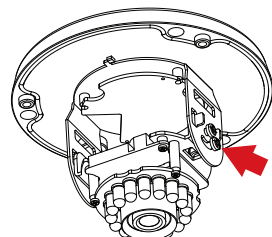
Schließen Sie das Strom- und Ethernet-Kabel oder nur das Ethernet-Kabel an, wenn Sie eine PoE-Verbindung verwenden.



Um den Winkel der Kamera einzustellen, ziehen Sie die schwarze Innenabdeckung und nehmen Sie sie von der Kamera ab.



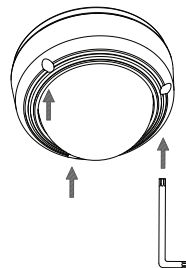
Lösen Sie die Einstellschraube an der Seite der Kamera, bewegen Sie die Kamera in den gewünschten Winkel und ziehen Sie dann die Schraube wieder an. Sie können die Kamera auch drehen, indem Sie sie mit der Hand nach links oder rechts bewegen.



Bringen Sie nach Einstellung des Kamerawinkels die Innenabdeckung wieder an.

Hinweis: Die Kamera verfügt über einen beschränkten Bewegungsbereich. Wenn sie bei der ihrer Einstellung nicht weiter bewegt werden kann, versuchen Sie nicht, sie weiter in diese Richtung zu drehen oder zu neigen.

Bringen Sie die Kameraabdeckung wieder an.

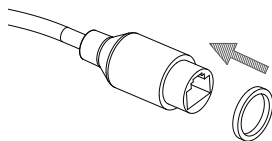


Soll Ihre Installation wasserdicht sein, fahren Sie bitte auf der nächsten Seite fort.

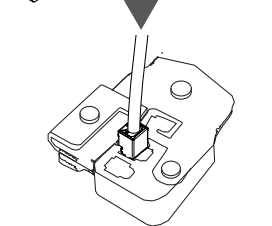
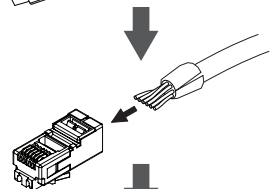
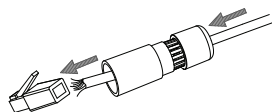
Ihre Installation wasserdicht machen

Um Ihre Kamerainstallation wasserdicht zu machen, befolgen Sie die Anweisungen unten: Für diesen Vorgang sind ein rundes Ethernet-Kabel, eine Crimpzange und RJ-45 Stecker erforderlich.

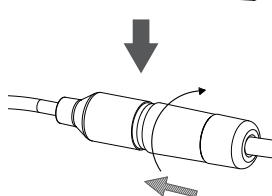
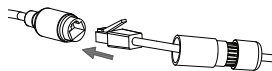
Bringen Sie den Dichtungsring auf dem Ethernet-Steckverbinder (wie in der Abbildung zu sehen) an.



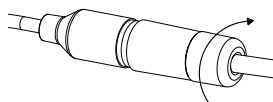
Fädeln Sie das Ethernet-Kabel mit dem freien Kabelende durch den wasserdichten Stecker (siehe Abbildung) und stecken Sie einen RJ-45 Stecker auf das gecrimpte Kabel.



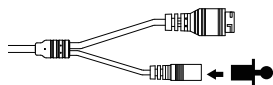
Stecken Sie den RJ-45 Stecker in den Ethernet-Steckverbinder und drehen Sie den wasserdichten Steckanschluss im Uhrzeigersinn etwa eine halbe Umdrehung auf den Ethernet-Steckverbinder.



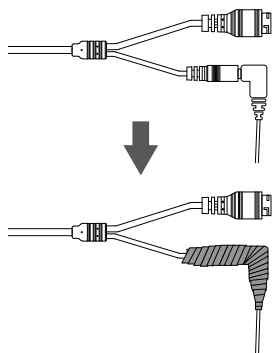
Drehen Sie den hinteren Teil des wasserdichten Steckanschlusses im Uhrzeigersinn, bis eine feste Abdichtung um das Ethernet-Kabel erreicht ist.



Wenn Sie PoE (Power over Ethernet) zum Betrieb Ihrer Kamera nutzen, sollten Sie den mitgelieferten Gummistecker zum Stromanschluss verwenden.



Falls Sie ein Netzteil (Stromadapter) - nicht im Lieferumfang enthalten - zum Betrieb Ihrer Kamera nutzen, wickeln Sie wasserfestes Klebeband zur Abdeckung stufenweise überlappend um die Verbindung.



Weitere Informationen

Zusätzliche Hilfe und Produktinformationen stehen Ihnen online unter <http://www.dlink.com> zur Verfügung.

Garantiebestimmungen

Landesspezifische Informationen zu Gewährleistungen finden Sie unter <http://warranty.dlink.com/>.

Guide d'installation rapide

Ce guide d'installation fournit des instructions élémentaires qui vous aideront à installer la caméra réseau sur votre réseau. Pour obtenir des informations complémentaires sur l'utilisation de la caméra, consultez le Manuel d'utilisation, disponible sur le CD joint à ce coffret, ou sur le site Web d'assistance D-Link.

Contenu de la boîte

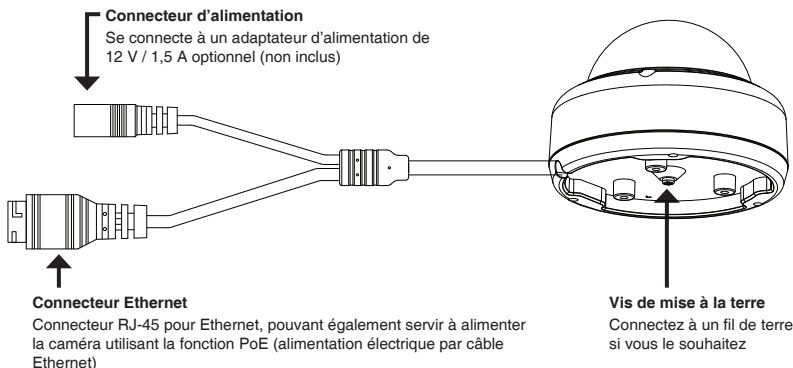
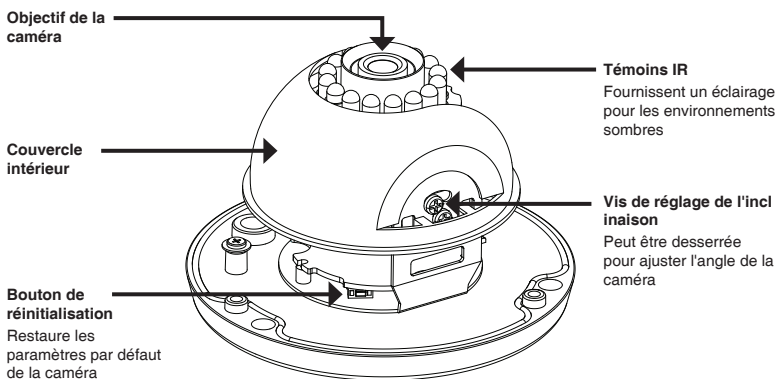
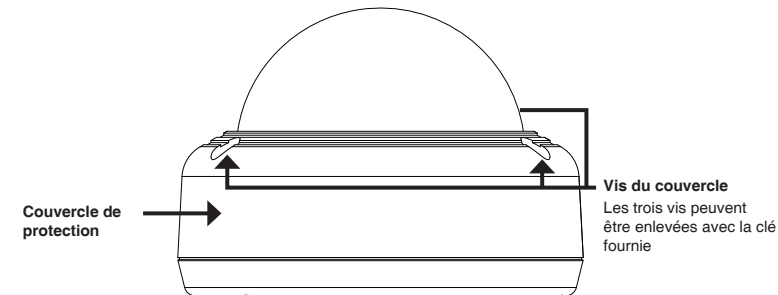
- Caméra à dôme de surveillance extérieure PoE Full HD anti vandalisme DCS-4602EV
- Câble du connecteur étanche
- Bouchon en caoutchouc du connecteur d'alimentation
- Kit de montage
- Manuel et logiciel sur CD-ROM
- Guide d'installation rapide

Contactez votre revendeur s'il manque l'un des éléments ci-dessus.

Remarque de sécurité :

L'installation et l'entretien doivent être réalisés par des techniciens qualifiés afin d'être conformes à tous les codes locaux et d'éviter d'annuler votre garantie.

Description du matériel



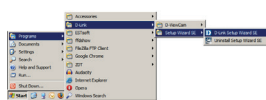
Configuration de la caméra

Insérez le CD de la DCS-4602EV dans le lecteur de CD-ROM de l'ordinateur pour lancer l'installation. Si la fonction d'exécution automatique de votre ordinateur est désactivée ou si le dispositif de lancement D-Link ne parvient pas à démarrer automatiquement, cliquez sur **Start > Run** (Démarrer > Exécuter). Tapez **D:\autorun.exe**, où D: représente la lettre de votre lecteur de CD-ROM.

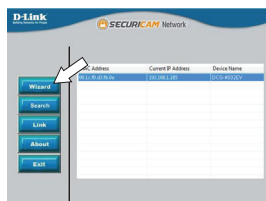
Cliquez sur **Setup Wizard** (Assistant de configuration) et suivez les instructions pour installer l'assistant de configuration.



Cliquez sur l'icône **D-Link Setup Wizard SE** (Assistant de configuration D-Link SE) créée dans votre menu Démarrer de Windows (**Démarrer > D-Link > Setup Wizard SE** (Assistant de configuration SE)).



L'Assistant de configuration s'ouvre et affiche les adresses MAC et IP de votre ou de vos caméras. Si un serveur DHCP se trouve sur votre réseau, une adresse IP valide s'affiche. Si votre réseau n'utilise pas de serveur DHCP, l'adresse IP statique par défaut de la caméra réseau (**192.168.0.20**) s'affiche.



Sélectionnez votre caméra, puis cliquez sur **Wizard** (Assistant) pour continuer.

Saisissez l'ID admin et le mot de passe. Lorsque vous vous connectez pour la première fois, l'ID Admin par défaut est **admin** et le mot de passe est vierge.



Cliquez sur les cases si vous souhaitez changer l'ID admin et le mot de passe de la caméra, puis saisissez le nouvel ID et le nouveau mot de passe que vous souhaitez utiliser.

Cliquez sur **Next** (Suivant) pour continuer.

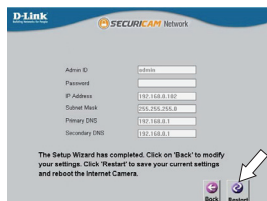
Sélectionnez **DHCP** si la caméra obtient une adresse IP automatiquement d'un serveur DHCP (par exemple, un routeur).

Sélectionnez **Static IP Address** (Adresse IP statique) si vous voulez saisir les paramètres IP de la caméra manuellement.



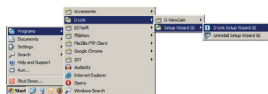
Cliquez sur **Next** (Suivant) pour continuer.

Prenez le temps de vérifier vos paramètres, puis cliquez sur **Restart** (Redémarrer).



Affichage de votre caméra via un navigateur Web

Cliquez sur l'icône **D-Link Setup Wizard SE** (Assistant de configuration D-Link SE) créée dans votre menu Démarrer de Windows (**Démarrer > D-Link > Setup Wizard SE** (Assistant de configuration SE)).

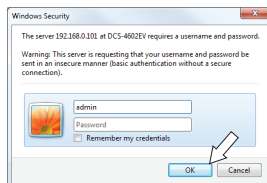


Sélectionnez la caméra, puis cliquez sur **Link** (Connexion) pour accéder à la configuration Web.

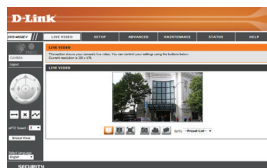


L'Assistant de configuration ouvre automatiquement votre navigateur Web à l'adresse IP de la caméra.

Tapez **admin** comme nom d'utilisateur par défaut et laissez le mot de passe vide. Cliquez sur **OK** pour continuer.



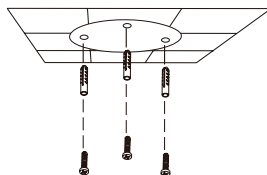
Cette section présente la vidéo en direct de votre caméra. Vous pouvez sélectionner votre profil vidéo et voir ou utiliser la caméra. Pour obtenir des informations complémentaires sur la configuration Web, reportez-vous au manuel d'utilisation du CD-ROM ou sur le site Web D-Link.



Instructions de montage

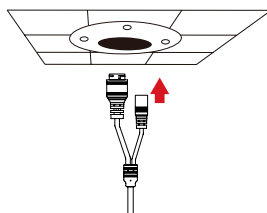
Il est fortement recommandé de configurer et de tester votre caméra avant de l'installer.

Placez l'autocollant de montage là où vous souhaitez placer la caméra.

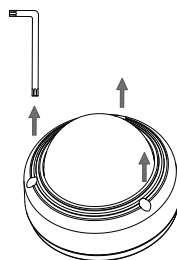


Utilisez un foret de 6 mm pour percer les trous nécessaires à environ 25 mm de profondeur, puis insérez les chevilles dans les trous.

Si vous faites passer les câbles de la caméra à travers le mur, percez un trou au centre et tirez les câbles à travers le trou.

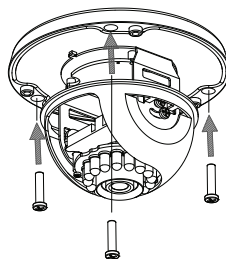


Utilisez la clé fournie pour desserrer les 3 vis sur le dessus de la caméra, puis soulevez le couvercle de la caméra.

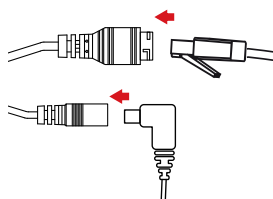


Utilisez les vis fournies pour fixer la caméra au mur.

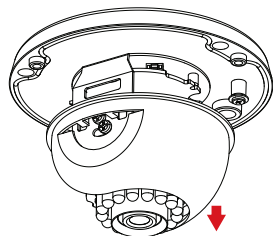
Si vous faites passer les câbles de la caméra sur le côté de la caméra, guidez les câbles à travers la goulotte sur la base.



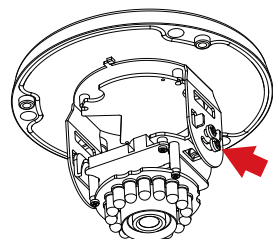
Connectez l'alimentation et le câble Ethernet ou seulement le câble Ethernet si vous utilisez une connexion PoE.



Pour ajuster l'angle de la caméra, tirez sur le couvercle intérieur noir et retirez-le de la caméra.



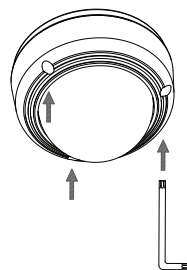
Desserrez la vis de réglage sur le côté de la caméra, puis resserrez-la après avoir déplacé la caméra pour qu'elle soit dans l'angle que vous souhaitez. Vous pouvez également faire pivoter la caméra en la saisissant et en la tournant vers la gauche ou vers la droite.



Lorsque vous avez terminé le réglage de l'angle de la caméra, remettez le couvercle intérieur en place.

Remarque: la caméra possède une amplitude de mouvement limitée ; si elle s'arrête pendant que vous l'ajustez, ne tentez pas de la faire pivoter ou de l'incliner plus loin dans cette direction.

Remettez le couvercle de la caméra en place.



Si vous devez imperméabiliser votre installation, veuillez continuer à la page suivante.

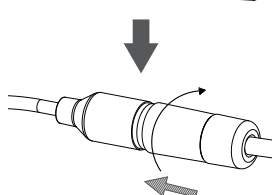
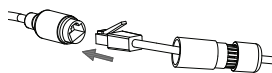
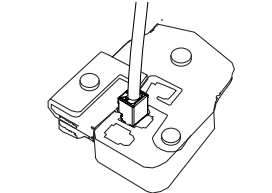
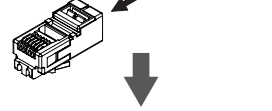
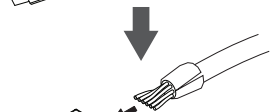
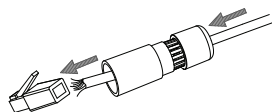
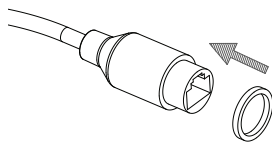
Imperméabilisation de votre Installation

Pour imperméabiliser l'installation de votre caméra, suivez les instructions ci-dessous. Il vous faut un câble Ethernet rond, une pince à sertir et des prises RJ-45 pour cette procédure.

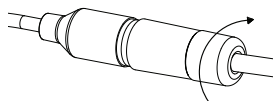
Placez la rondelle autour de la base du connecteur Ethernet comme illustré.

Faites passer le câble Ethernet dénudé à travers le connecteur étanche comme illustré, puis sertissez une prise RJ-45 sur le câble.

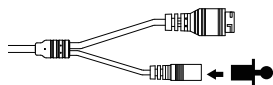
Branchez la prise RJ-45 dans le connecteur Ethernet, puis vissez le connecteur étanche dans le connecteur Ethernet en le tournant d'environ un demi-tour dans le sens horaire.



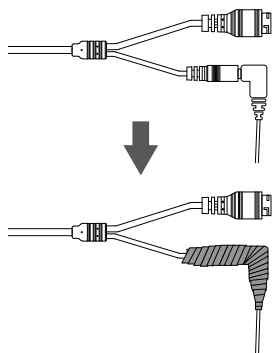
Vissez la partie arrière du connecteur étanche dans le sens horaire jusqu'à former un joint étanche autour du câble Ethernet.



Si vous utilisez une connexion PoE pour alimenter votre caméra, utilisez le bouchon en caoutchouc fourni du connecteur d'alimentation sur le connecteur d'alimentation.



Si vous utilisez un adaptateur d'alimentation (non inclus) pour alimenter votre caméra, enroulez du ruban adhésif étanche autour de la connexion en le superposant pour la couvrir.



Informations complémentaires

Vous trouverez une aide supplémentaire et des informations sur le produit en ligne à l'adresse <http://www.dlink.com>.

Informations sur la garantie

Consultez le site <http://warranty.dlink.com/> pour prendre connaissance de la garantie appliquée dans votre région.

Guía de instalación rápida

Esta guía de instalación proporciona instrucciones básicas para la instalación de la cámara de red en su red. Para obtener información adicional acerca de cómo utilizar la cámara, consulte el Manual del usuario disponible en el CD incluido en el paquete o en el sitio web de asistencia de D-Link.

¿Qué contiene la caja?

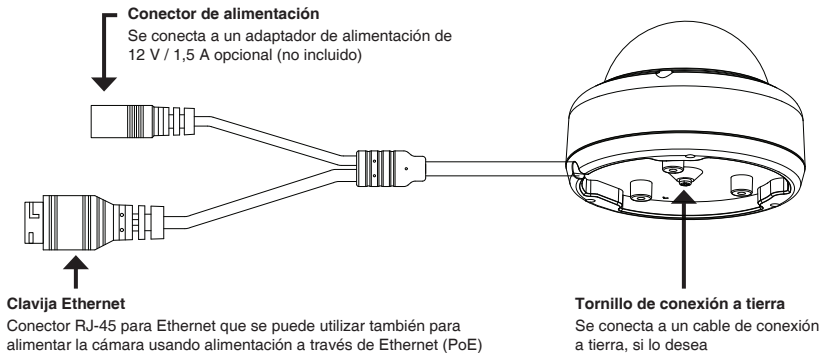
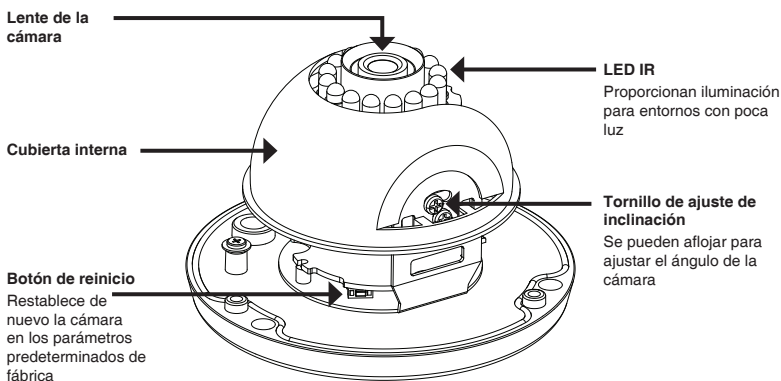
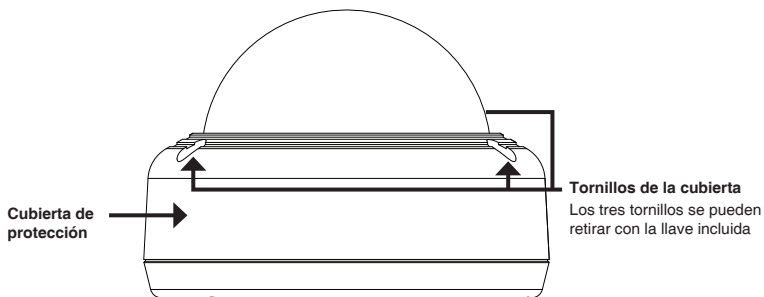
- Cámara domo PoE a prueba de vandalismo para vigilancia de alta definición en exteriores DCS-4602EV
- Conector de impermeabilización del cable
- Clavija de goma para conector de alimentación
- Kit de montaje
- Manual y software en CD-ROM
- Guía de instalación rápida

Si falta cualquiera de los componentes anteriores, póngase en contacto con el proveedor.

Aviso de seguridad:

La instalación y el mantenimiento deben realizarlo técnicos cualificados con el fin de cumplir con todos los códigos locales y evitar la anulación de la garantía.

Descripción general del hardware



Configuración de la cámara

Inserte el CD de la DCS-4602EV en la unidad de CD-ROM del ordenador para comenzar la instalación. Si la función de ejecución automática del ordenador está desactivada o si el iniciador de D-Link no se inicia automáticamente, haga clic en **Inicio > Ejecutar**. Escriba **D:\autorun.exe**, donde D: representa la letra de unidad de su unidad de CD-ROM.

Haga clic en **Setup Wizard** (Asistente de configuración) y siga las instrucciones para instalar el asistente de configuración.

Haga clic en el icono **Asistente de configuración SE D-Link** que se creó en el menú de inicio de Windows (**Inicio > D-Link > Asistente de configuración SE**).

Aparecerá el asistente de configuración y se mostrará la dirección MAC y la dirección IP de la cámara. Si tiene un servidor DHCP en la red, se mostrará una dirección IP válida. Si la red no utiliza un servidor DHCP, se mostrará la dirección IP estática predeterminada de la cámara (**192.168.0.20**).

Seleccione la cámara y, a continuación, haga clic en el botón **Wizard** (Asistente) para continuar.

Introduzca el ID de administrador y la contraseña. Al iniciar sesión por primera vez, el ID de administrador predeterminado es **admin**, con la contraseña en blanco.

Haga clic en las casillas de verificación si desea cambiar el ID de administrador y la contraseña para la cámara e introduzca el nuevo ID y contraseña que desee utilizar.

Haga clic en **Next** (Siguiente) para continuar.

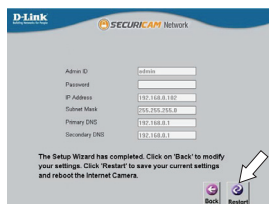
Seleccione **DHCP** si la cámara consigue una dirección IP automáticamente de un servidor DHCP como, por ejemplo, un router.

Seleccione **Static IP** (IP estática) si desea introducir manualmente los parámetros IP de la cámara.

Haga clic en **Next** (Siguiente) para continuar.

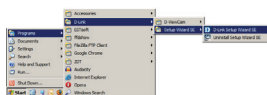


Tómese un tiempo para confirmar la configuración y haga clic en **Restart** (Reiniciar).

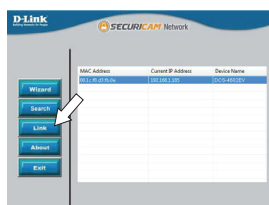


Visualización de su cámara a través del explorador de web

Haga clic en el icono **Asistente de configuración SE D-Link** que se creó en el menú de inicio de Windows (**Inicio > D-Link > Asistente de configuración SE**).

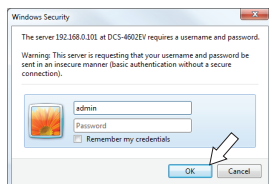


Seleccione la cámara y haga clic en **Link** (Vincular) para acceder a la configuración web.

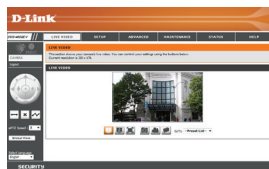


El asistente de configuración abrirá automáticamente el explorador de web en la dirección IP de la cámara.

Escriba **admin** como nombre de usuario predeterminado y deje la contraseña en blanco. Haga clic en **OK** (Aceptar) para continuar.



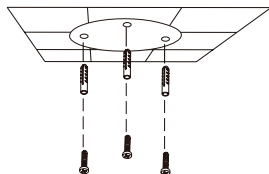
Esta sección muestra el vídeo en directo de la cámara. Puede seleccionar el perfil de vídeo y ver o utilizar la cámara. Para obtener información adicional acerca de la configuración web, consulte el manual de usuario incluido en el CD-ROM o visite el sitio web de D-Link.



Instrucciones de montaje

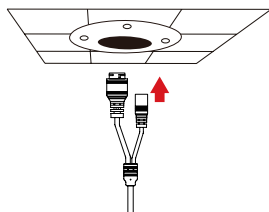
Se recomienda encarecidamente configurar y probar la cámara antes de montarla.

Coloque la pegatina de montaje en el lugar en el que desee ubicar la cámara.

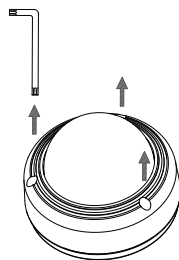


Utilice una broca de 6 mm para hacer los orificios necesarios a una profundidad de 25 mm aproximadamente y, a continuación, introduzca los anclajes de pared en los orificios.

Si pasa los cables de la cámara a través de la pared, taladre un agujero en el centro y tire de los cables a través del orificio.

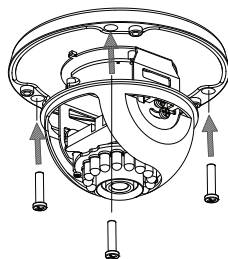


Utilice la llave incluida para aflojar los 3 tornillos de la parte superior de la cámara y, a continuación, levante la cubierta de la cámara hacia afuera.

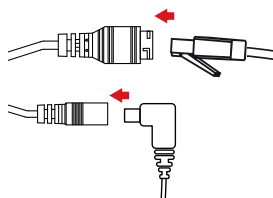


Utilice los tornillos suministrados para montar la cámara en la pared.

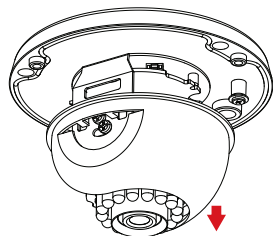
Si pasa los cables de la cámara por el lado externo de la cámara, guíe los cables de la cámara a través del canal del cable de la base.



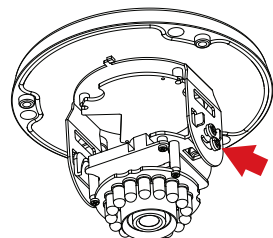
Conecte la alimentación y los cables Ethernet o solo el cable Ethernet si está utilizando una conexión PoE.



Para ajustar el ángulo de la cámara, tire de la cubierta interna negra y retírela de la cámara.



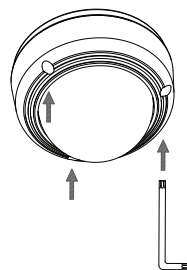
Afloje el tornillo de ajuste del lateral de la cámara y, a continuación, vuelva a apretarlo después de mover la cámara al ángulo deseado. También puede girar la cámara agarrando la cámara y girándola a la izquierda o a la derecha.



Cuando termine de ajustar el ángulo de la cámara, coloque de nuevo la cubierta interna en su sitio.

Nota: la cámara tiene un rango de movimiento limitado; si se detiene cuando está ajustándola, no intente girar ni inclinar más la cámara en esa dirección.

Acople de nuevo la cubierta de la cámara.

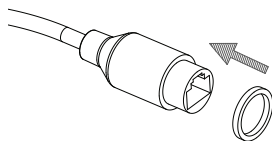


Si necesita impermeabilizar la instalación, vaya a la página siguiente.

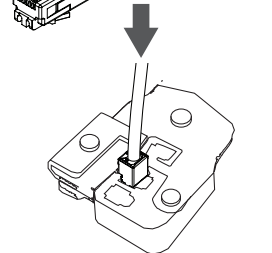
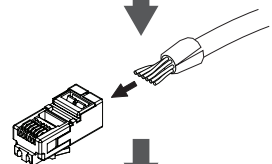
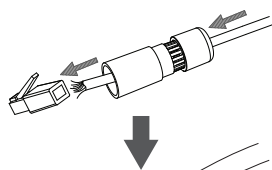
Impermeabilización de la instalación

Para impermeabilizar la instalación de la cámara, siga las instrucciones que aparecen a continuación. Para este procedimiento, se necesita un cable Ethernet redondo, una herramienta de engaste y clavijas RJ-45.

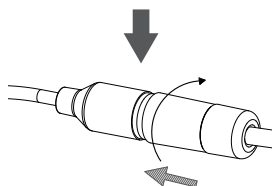
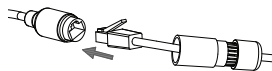
Coloque la arandela alrededor de la base del conector Ethernet como se muestra.



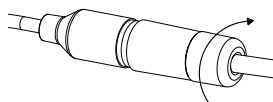
Enrosque los cables Ethernet desnudos a través del conector impermeable como se muestra y, a continuación, engaste una clavija RJ-45 en el cable.



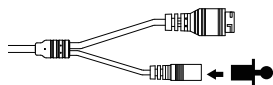
Conecte la clavija RJ-45 en el conector Ethernet y, a continuación, atornille el conector impermeable al conector Ethernet girándolo aproximadamente medio giro hacia la derecha.



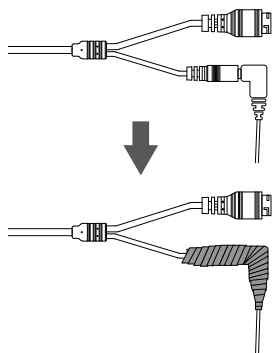
Atornille hacia la derecha la parte trasera del conector impermeable hasta que esté bien sellado alrededor del cable Ethernet.



Si utiliza PoE para la alimentación de la cámara, use la clavija de goma para conector de alimentación en el conector de alimentación.



Si utiliza un adaptador de alimentación (no incluido) para la alimentación de la cámara, enrolle la cinta de impermeabilización alrededor de la conexión de manera superpuesta para cubrirla.



Información adicional

Existe ayuda e información del producto adicional en línea en <http://www.dlink.com>.

Información acerca de la garantía

Visite <http://warranty.dlink.com/> para obtener información sobre la garantía en su región.

Guida di installazione rapida

In questa guida di installazione sono riportate le istruzioni di base per installare la telecamera in rete. Per ulteriori informazioni sull'utilizzo della videocamera, consultare il manuale utente disponibile sul CD incluso nella confezione o scaricabile dal sito Web di supporto di D-Link.

Contenuto della confezione

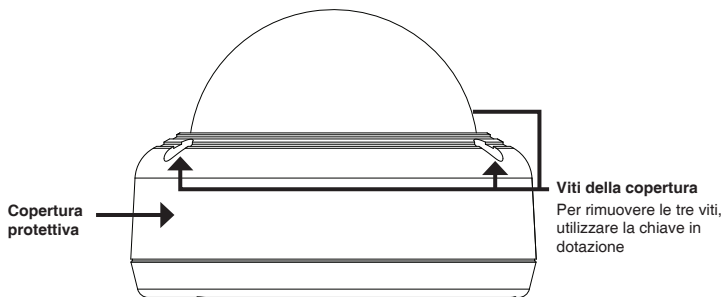
- DCS-4602EV Vigilance Full HD Outdoor Vandal-Proof PoE Dome Camera
- Connettore impermeabile per cavo
- Spinotto in gomma del connettore di alimentazione
- Kit di montaggio
- Manuale e software su CD-ROM
- Guida di installazione rapida

Se uno o più degli articoli sopra elencati risultano mancanti, rivolgersi al rivenditore.

Nota relativa alla sicurezza:

Per evitare di invalidare la garanzia, l'installazione e le riparazioni devono essere effettuate da tecnici qualificati in conformità alle normative locali.

Panoramica hardware



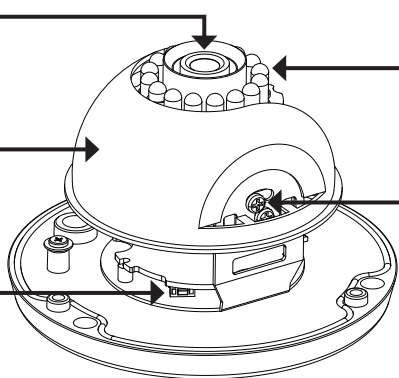
Copertura protettiva

Viti della copertura
Per rimuovere le tre viti, utilizzare la chiave in dotazione

Obiettivo della telecamera

Coperchio interno

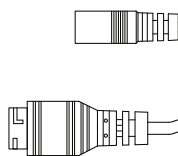
Pulsante di reset
Consente di ripristinare le impostazioni predefinite in fabbrica della telecamera



LED IR
Forniscono illuminazione in ambienti scarsamente illuminati

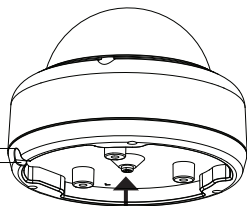
Vite di regolazione dell'inclinazione
Può essere allentata per regolare l'angolazione della telecamera

Connettore di alimentazione
Viene connesso a un alimentatore opzionale da 12 V/1,5 A (non incluso).



Spinotto Ethernet

Connettore RJ-45 per Ethernet che può essere utilizzato anche per alimentare la telecamera quando si utilizza PoE (Power over Ethernet)



Vite per la messa a terra

Se necessario, collegarla a un filo per la messa a terra

Configurazione della telecamera

Inserire il CD della telecamera DCS-4602EV nell'unità CD-ROM del computer per avviare l'installazione. Se la funzione di esecuzione automatica è disabilitata nel computer in uso o se l'utilità di avvio di D-Link non viene avviata automaticamente, fare clic su **Start > Run (Start > Esegui)**. Digitare **D:\autorun.exe**, dove D: rappresenta la lettera dell'unità CD-ROM.

Fare clic su **Setup Wizard (Configurazione guidata)** e attenersi alle istruzioni per installare la Configurazione guidata.

Fare clic sull'icona **D-Link Setup Wizard SE** creata nel menu Start di Windows (**Start > D-Link > Setup Wizard SE**).

Viene visualizzata la pagina dell'installazione guidata che riporta l'indirizzo MAC e l'indirizzo IP della telecamera. Se la rete dispone di un server DHCP, viene visualizzato un indirizzo IP valido. Se la rete non dispone di un server DHCP, viene visualizzato l'indirizzo IP statico predefinito della telecamera di rete, ovvero **192.168.0.20**.

Selezionare la telecamera, quindi fare clic sul pulsante **Wizard (Procedura guidata)** per continuare.

Immettere l'ID e la password dell'amministratore. Quando si effettua l'accesso per la prima volta, l'ID predefinito dell'amministratore è **admin**, mentre la password viene lasciata vuota.

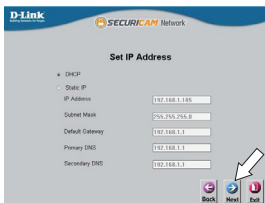
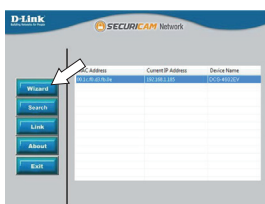
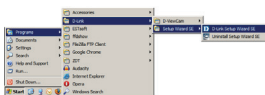
Selezionare le caselle di controllo se si desidera cambiare l'ID e la password dell'amministratore della telecamera e immettere quelli nuovi da utilizzare.

Fare clic su **Next (Avanti)** per continuare.

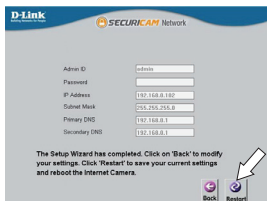
Selezionare **DHCP** se la telecamera ottiene un indirizzo IP automaticamente da un server DHCP, ad esempio un router.

Selezionare **Static IP (IP statico)** se si desidera immettere manualmente le impostazioni IP della telecamera.

Fare clic su **Next (Avanti)** per continuare.

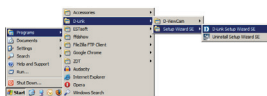


Verificare le impostazioni, quindi fare clic su **Restart** (Riavvia).



Visualizzazione della telecamera tramite il browser Web

Fare clic sull'icona **D-Link Setup Wizard SE** creata nel menu Start di Windows (**Start > D-Link > Setup Wizard SE**).

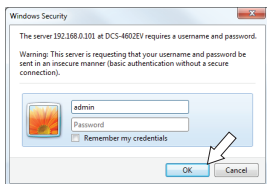


Selezionare la telecamera e fare clic su **Link** (**Collegamento**) per accedere alla configurazione Web.

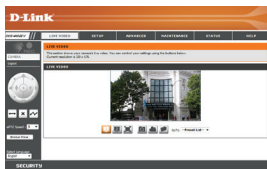


La procedura guidata di configurazione apre automaticamente il browser Web all'indirizzo IP della telecamera.

Immettere **admin** come nome utente predefinito e lasciare il campo password vuoto. Fare clic su **OK** per continuare.



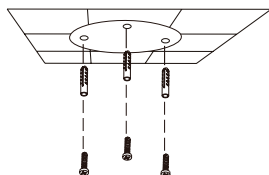
In questa sezione è visualizzato il video in diretta della videocamera. È possibile selezionare il profilo video desiderato e visualizzare le immagini o mettere in funzione la telecamera. Per ulteriori informazioni sulla configurazione Web, fare riferimento al manuale utente incluso sul CD-ROM o scaricabile dal sito Web di D-Link.



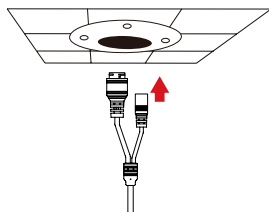
Istruzioni per il montaggio

Si consiglia vivamente di configurare e testare la telecamera prima di montarla.

Applicare l'adesivo di montaggio nel punto in cui si desidera posizionare la telecamera.

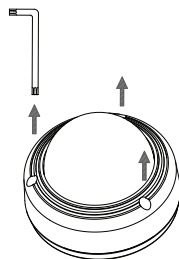


Usare un trapano con una punta da 6 mm per praticare i fori necessari, profondi all'incirca 25 mm, quindi inserire i tasselli nei fori.



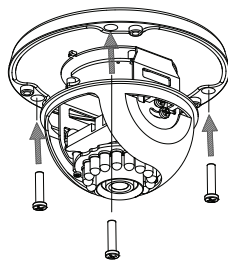
Se i cavi della telecamera sono nascosti nel muro, praticare con il trapano un foro al centro e far passare i cavi attraverso il foro.

Utilizzare la chiave in dotazione per allentare le 3 viti nella parte superiore della telecamera, quindi staccare la copertura.

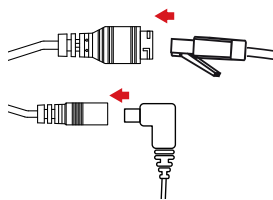


Utilizzare le viti fornite per montare la telecamera a parete.

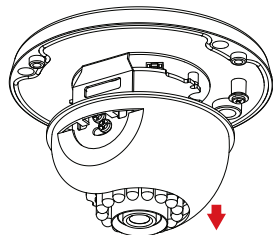
Se i cavi vengono fatti passare esternamente a lato della telecamera, inserire i cavi nell'apposito canale sulla base della telecamera.



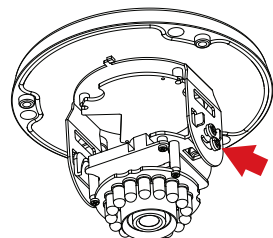
Collegare i cavi di alimentazione ed Ethernet oppure solo il cavo Ethernet se si utilizza una connessione PoE.



Per regolare l'angolazione della telecamera, tirare il coperchio interno nero e staccarlo dalla telecamera.



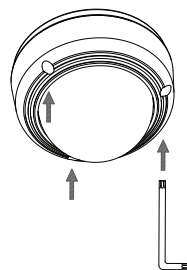
Allentare la vite di regolazione sul lato della telecamera, quindi serrarla di nuovo dopo aver impostato la corretta angolazione per la telecamera. Per ruotare la telecamera, è anche possibile afferrarla e girarla verso destra o sinistra.



Una volta regolata l'angolazione della telecamera, reinstallare il coperchio interno.

Nota: il movimento della telecamera è limitato; se si blocca durante la regolazione, non provare a ruotare o inclinare ulteriormente la telecamera in tale direzione.

Reinstallare la copertura della telecamera.

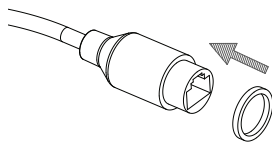


Per rendere impermeabile l'installazione, continuare con la pagina successiva.

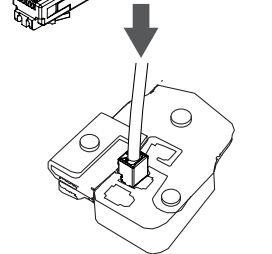
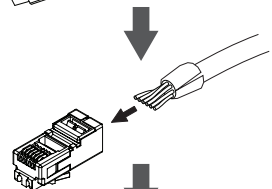
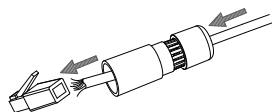
Installazione per garantire l'impermeabilità

Per installare la telecamera garantendone l'impermeabilità, attenersi alle istruzioni seguenti. Per questa procedura sono necessari un cavo Ethernet tondo, una pinza a crimpare e spinotti RJ-45.

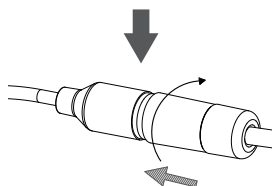
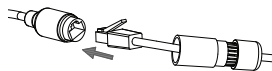
Posizionare la rondella intorno alla base del connettore Ethernet come illustrato in figura.



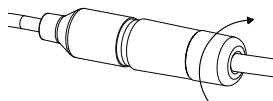
Spellare a cavo Ethernet fino al connettore impermeabile, come illustrato in figura, quindi crimpare uno spinotto RJ-45 sul cavo.



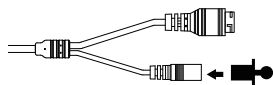
Collegare lo spinotto RJ-45 al connettore Ethernet, quindi avvitare il connettore impermeabile a quello Ethernet ruotandolo di mezzo giro in senso orario.



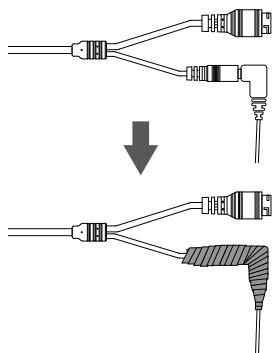
Avvitare la parte posteriore del connettore impermeabile in senso orario fino a sigillare perfettamente il cavo Ethernet.



Se la telecamera è alimentata tramite PoE, utilizzare lo spinotto in gomma incluso per il collegamento del connettore di alimentazione.



Se la telecamera è alimentata tramite un alimentatore (non incluso), avvolgere del nastro adesivo impermeabile intorno al connettore in modo da coprirlo bene.



Ulteriori informazioni

Per maggiori informazioni e dettagli sul prodotto, visitare il sito Web all'indirizzo <http://www.dlink.com>.

Termini di garanzia

Per informazioni sulla garanzia nel proprio paese, visitare il sito <http://warranty.dlink.com/>.

Краткое руководство по установке

Данное руководство содержит основные инструкции по установке камеры DCS-4602EV в сети. Для получения дополнительной информации по настройке камеры, пожалуйста, обратитесь к руководству пользователя на CD-диске из комплекта поставки или через Web-сайт D-Link.

Комплект поставки

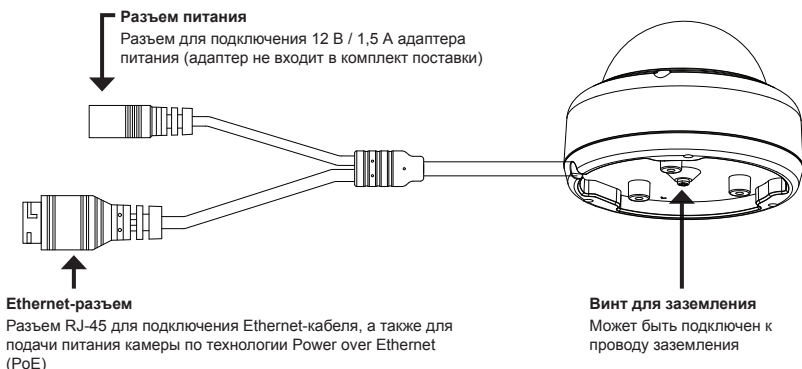
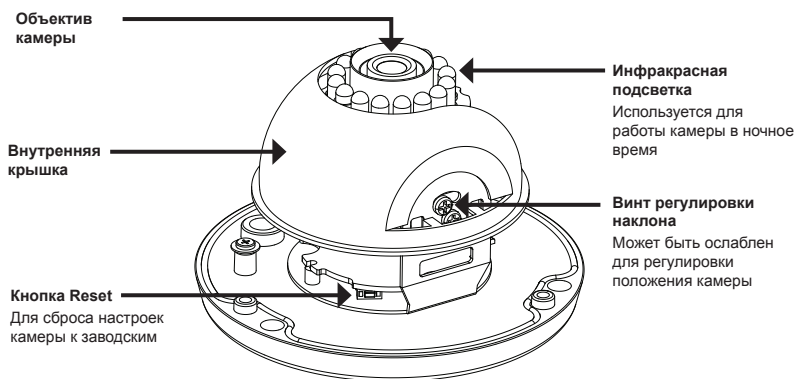
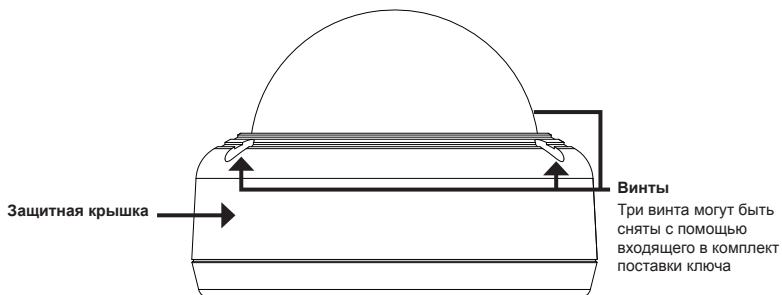
- Внешняя купольная антивандальная сетевая 2 МП Full HD-камера DCS-4602EV с поддержкой PoE и ночной съемки
- Водонепроницаемый коннектор для кабеля
- Резиновая заглушка для разъема питания
- Комплект для монтажа
- CD-диск с руководством пользователя и программным обеспечением
- Краткое руководство по установке

Если что-либо из перечисленного отсутствует, пожалуйста, обратитесь к поставщику.

Меры безопасности:

Во избежание прекращения гарантии, установку и обслуживание должны проводить сертифицированные специалисты в соответствии с региональными нормами и правилами.

Обзор аппаратной части



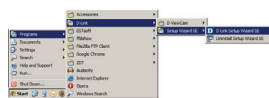
Настройка с помощью Мастера установки

Вставьте компакт-диск для DCS-4602EV в привод CD-ROM, чтобы начать установку. Если на компьютере отключена функция автозапуска или запуск не произошел автоматически, нажмите **Пуск > Выполнить**. Введите **D:\autorun.exe**, где D: - имя привода CD-ROM.

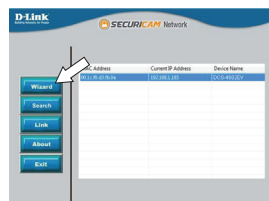
Нажмите **Setup Wizard**, чтобы начать установку.



Выберите ярлык **D-Link Setup Wizard SE** в стартовом меню Windows (**Пуск > D-Link > Setup Wizard SE**).



Откроется окно мастера установки, где будет отображен MAC-адрес и IP-адрес Вашей камеры. Если в сети используется DHCP-сервер, то будет отображен IP-адрес, назначенный этим сервером. Если в сети не используется DHCP-сервер, то отобразится статический IP-адрес камеры по умолчанию: **192.168.0.20**.



Выберите камеру и нажмите кнопку **Wizard** для продолжения.

Введите имя пользователя (Admin ID) и пароль (Password). Имя пользователя по умолчанию - **admin**, пароль оставьте пустым.

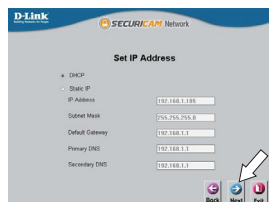


Если Вы хотите изменить имя пользователя и пароль для камеры, поставьте флажки в соответствующих полях и затем введите новые учетные данные.

Нажмите **Next** для перехода на следующую страницу.

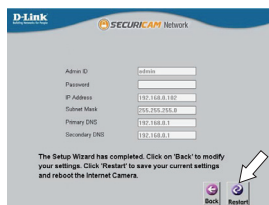
Выберите **DHCP**, если камера должна автоматически получать IP-адрес.

Выберите **Static IP**, если камера должна иметь постоянный IP-адрес.



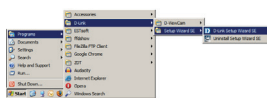
Нажмите **Next** для перехода на следующую страницу.

Подождите несколько минут для сохранения настроек и нажмите кнопку **Restart**.



Просмотр изображения камеры через Web-браузер

Выберите ярлык **D-Link Setup Wizard SE** в стартовом меню Windows (**Пуск > D-Link > Setup Wizard SE**).

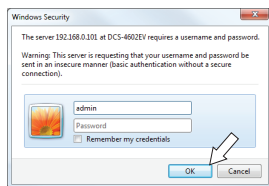


Выберите камеру и нажмите кнопку **Link** для доступа к Web-настройкам.

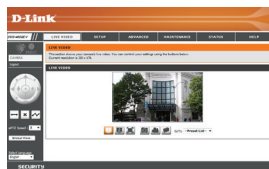


Мастер установки автоматически откроет Web-браузер по IP-адресу камеры.

Введите имя пользователя **admin** и оставьте поле с паролем пустым. Нажмите **OK** для продолжения.



В данном разделе доступен просмотр видео с камеры в реальном времени. Вы можете выбрать профиль видео и просматривать изображение с камеры. Для получения дополнительной информации по настройке камеры, пожалуйста, обратитесь к руководству пользователя на CD-диске из комплекта поставки или на Web-сайт D-Link.

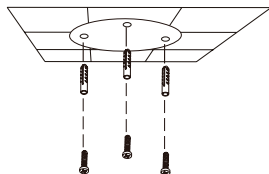


Монтаж камеры

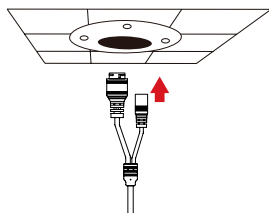
Настоятельно рекомендуется выполнить настройку и тестирование камеры до ее монтажа.

Прикрепите направляющий стикер на место, где планируется установить камеру.

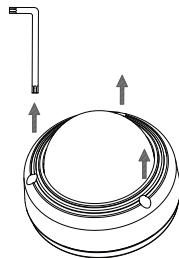
Просверлите отверстия глубиной приблизительно 25 мм сверлом диаметром 6 мм. Затем вставьте в отверстия анкеры.



Если требуется проложить кабели для камеры в стене, просверлите отверстие в центре и протяните кабели через это отверстие.

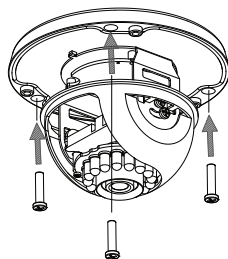


С помощью входящего в комплект поставки ключа ослабьте 3 винта в верхней части камеры. Затем снимите защитную крышку камеры.

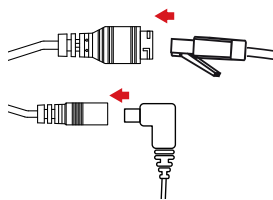


Установите камеру на стену с помощью входящих в комплект поставки винтов.

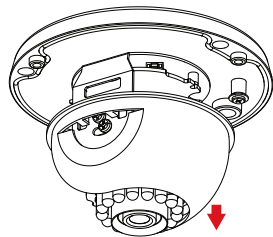
Если требуется вывести кабели с внешней стороны камеры, протяните их через канал в основании камеры.



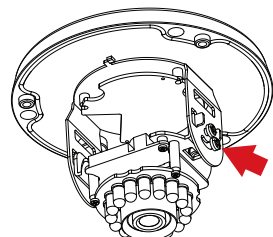
Подключите кабель питания и Ethernet-кабель. Если используется PoE-соединение, подключите только Ethernet-кабель.



Чтобы отрегулировать положение камеры, потяните внутреннюю крышку и снимите ее с камеры.



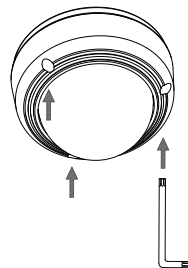
Ослабьте регулировочный винт, находящийся сбоку камеры, настройте требуемое положение и затяните винт. Положение камеры также можно менять, зажав ее и поворачивая влево или вправо.



После того как регулировка положения камеры будет завершена, установите внутреннюю крышку на место.

Примечание: Диапазон перемещения камеры ограничен; если она остановится во время выполнения регулировки, не пытайтесь поворачивать или наклонять камеру дальше в этом направлении.

Установите защитную крышку камеры.

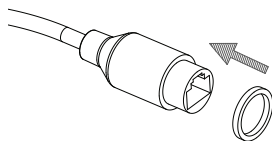


Если требуется обеспечить водонепроницаемость камеры, пожалуйста, перейдите на следующую страницу.

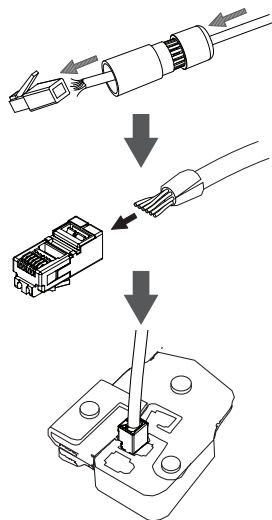
Водонепроницаемость камеры

Чтобы обеспечить водонепроницаемость камеры, следуйте приведенным ниже инструкциям. Для этой процедуры потребуются круглый Ethernet-кабель, инструмент для обжима и коннекторы RJ-45.

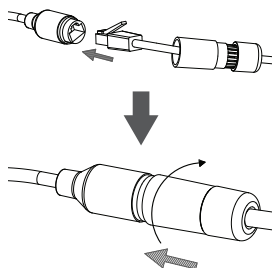
Установите уплотнительную прокладку на разъем RJ-45, как показано на рисунке.



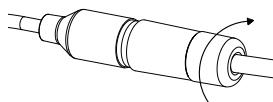
Протяните Ethernet-кабель через водонепроницаемый коннектор, как показано на рисунке. Далее вставьте кабель в коннектор RJ-45 и обожмите.



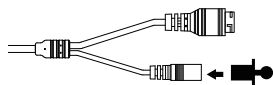
Соедините коннектор с разъемом RJ-45. Закрутите водонепроницаемый коннектор, повернув его приблизительно на пол-оборота по часовой стрелке.



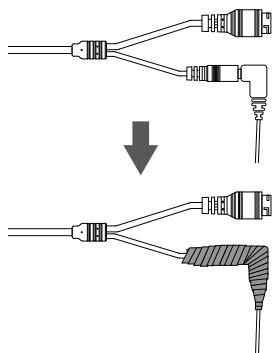
Поверните нижнюю часть водонепроницаемого коннектора по часовой стрелке для обеспечения герметичности Ethernet-кабеля.



Если подача питания на камеру осуществляется по технологии PoE, используйте входящую в комплект поставки резиновую заглушку для разъема питания.



Если подача питания на камеру осуществляется с помощью адаптера питания (не входит в комплект поставки), используйте специальную ленту для герметизации с целью предотвращения попадания влаги на соединение.



Дополнительная информация

Дополнительная помощь и информация об устройстве доступна в режиме онлайн на Web-сайте <http://www.dlink.com>.

Информация о гарантии

Чтобы получить информацию о гарантии для Вашего региона, пожалуйста, посетите <http://warranty.dlink.com/>.

Технические характеристики

Камера

Основные характеристики	<ul style="list-style-type: none"> 1/3-дюймовый двухмегапиксельный CMOS-сенсор с технологией прогрессивного сканирования Расстояние инфракрасной подсветки: 20 м Минимальное освещение: 0 люкс с инфракрасной подсветкой Встроенный ICR-фильтр 10-кратное цифровое увеличение Минимальное расстояние до объекта: 0,2 м Фокусное расстояние: 2,8 мм Апертура: F1.8 	<ul style="list-style-type: none"> Углы обзора: 96° (по горизонтали) 54° (по вертикали) 108° (по диагонали) Углы регулировки (немоторизованные): По вертикали: 60° По горизонтали: 350°
Корпус камеры	<ul style="list-style-type: none"> Всепогодный корпус (стандарт IP-66) 	<ul style="list-style-type: none"> Антивандалный корпус (стандарт IK10)
Характеристики изображения	<ul style="list-style-type: none"> Настройка качества и размера изображения, скорости передачи кадров и скорости передачи данных Метки времени и вставки текста Настраиваемые окна для обнаружения движения 	<ul style="list-style-type: none"> Настраиваемые зоны приватных масок Настройка скорости затвора, яркости, насыщенности цвета, контраста, резкости, WDR и 3D-фильтра
Сжатие видео	<ul style="list-style-type: none"> Сжатие в форматах H.264/MJPEG H.264/MJPEG мультикаст вещание 	JPEG для стоп-кадров
Разрешение видео	<ul style="list-style-type: none"> 16:9 - 1920 x 1080, 1280 x 720, 800 x 448, 640 x 360, 480 x 272, 320 x 176 до 30 кадров/с 	<ul style="list-style-type: none"> 4:3 - 1440 x 1080, 1280 x 960, 900 x 720, 800 x 592, 640 x 480, 480 x 352, 320 x 240 до 30 кадров/с
Интерфейсы для внешних устройств	<ul style="list-style-type: none"> Порт 10/100 BASE-TX Fast Ethernet 	<ul style="list-style-type: none"> Поддержка 802.3af PoE

Сеть		
Сетевые протоколы	<ul style="list-style-type: none"> • IPv6 • IPv4 • ARP • TCP/IP • UDP • ICMP • DHCP-клиент • NTP-клиент (D-Link) • DNS-клиент • DDNS-клиент (D-Link) • SMTP-клиент • FTP-клиент 	<ul style="list-style-type: none"> • HTTP/HTTPS • Samba-клиент • PPPoE • UPnP port forwarding • RTP/RTSP/RTCP • Фильтрация IP-адресов • Multicast • CoS • QoS/DSCP • SNMP • Соответствие ONVIF
Безопасность	<ul style="list-style-type: none"> • Защита учетной записи администратора и группы пользователей • Аутентификация по паролю 	<ul style="list-style-type: none"> • Шифрование HTTP и RTSP
Управление системой		
Системные требования для Web-интерфейса	<ul style="list-style-type: none"> • Web-браузер: Internet Explorer, Firefox, Safari 	
Управление событиями	<ul style="list-style-type: none"> • Обнаружение движения • Уведомление о событии и загрузка стоп-кадров/ видеоклипов через электронную почту или FTP 	<ul style="list-style-type: none"> • Поддержка нескольких серверов SMTP и FTP • Несколько уведомлений о событии • Несколько способов записи для создания резервных копий
Удаленное управление	<ul style="list-style-type: none"> • Создание стоп-кадров/ видеоклипов и сохранение на локальный жесткий диск 	<ul style="list-style-type: none"> • Доступ к интерфейсу с настройками через Web-браузер
Системные требования D-ViewCam™	<ul style="list-style-type: none"> • Операционная система: Microsoft Windows 8/7/Vista • Web-браузер: Internet Explorer 7 или выше 	<ul style="list-style-type: none"> • Протокол: Стандартный TCP/IP
Функции ПО D-ViewCam™	<ul style="list-style-type: none"> • Удаленное управление/ контроль: до 32 камер • Просмотр изображений с 32 камер на одном экране 	<ul style="list-style-type: none"> • Поддержка всех функций управления, доступных в Web-интерфейсе • Опции записи по срабатыванию датчика, по расписанию или вручную

Общие	
Вес	<ul style="list-style-type: none"> 525 г ± 5%
Внешний адаптер питания (не входит в комплект поставки)	<ul style="list-style-type: none"> Вход: 100~240 В переменного тока, 50/60 Гц Выход: 12 В постоянного тока, 1,5 А
Потребляемая мощность	<ul style="list-style-type: none"> 5,5 Вт ± 5%
Температура	<ul style="list-style-type: none"> Рабочая: от -30° до 50°C Хранения: от -20° до 70°C
Влажность	<ul style="list-style-type: none"> При эксплуатации: от 20% до 80% (без конденсата) При хранении: от 5% до 95% (без конденсата)
Сертификаты	<ul style="list-style-type: none"> CE CE LVD FCC C-Tick
Размеры	

Guia rápido de instalação

Este guia de instalação fornece instruções básicas para a instalação de sua nova câmera de rede. Para obter informações adicionais sobre como usar a câmera, consulte o Manual do Usuário que está disponível no CD incluído neste pacote ou do site de suporte da D-Link.

Conteúdo da embalagem

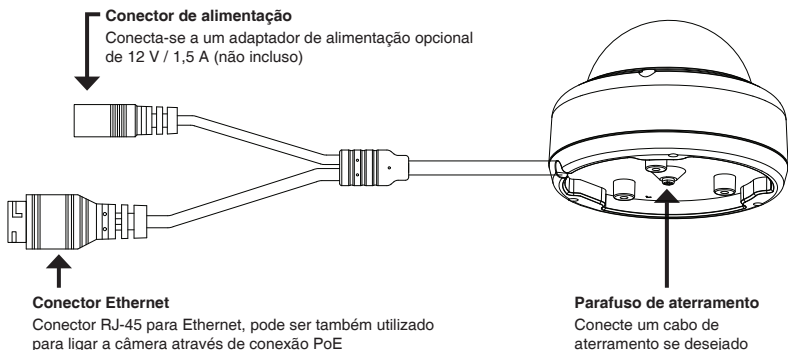
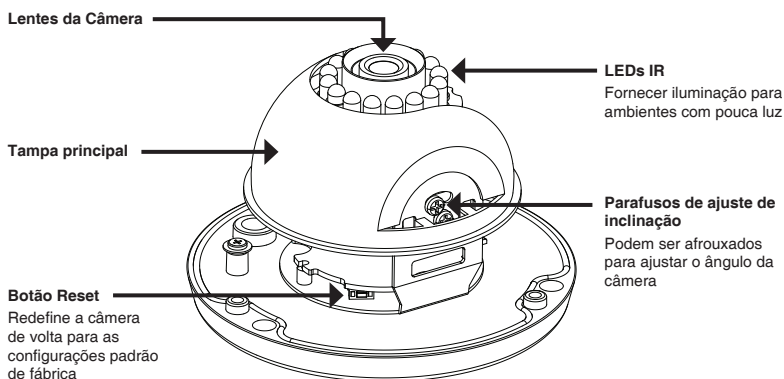
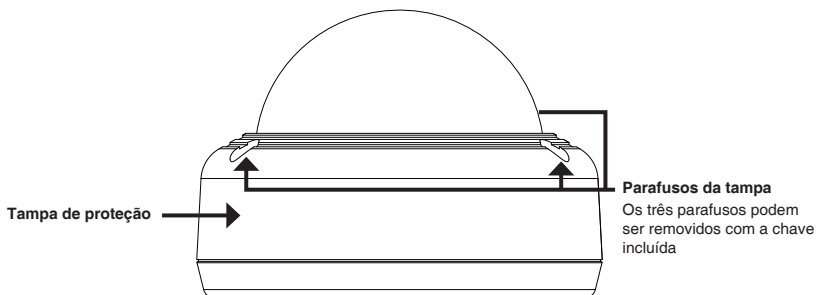
- DCS-4602EV – Câmera de Vigilância IP PoE Full HD tipo Dome Outdoor & Vandal-Proof
- Conector para cabo de impermeabilização
- Conector de alimentação
- Kit de montagem
- Manual e software em CD-ROM
- Guia rápido de instalação

Se qualquer um dos itens acima estiver faltando, entre em contato com o seu revendedor.

Aviso de segurança:

Instalação e manutenção devem ser feitas por técnicos certificados, de modo a estar em conformidade com todas as normas locais e evitar anulação da garantia.

Visão geral do Hardware



Como configurar a câmera

Insira o CD de instalação na unidade de CD-ROM do seu computador para iniciar a instalação. Se a função Autorun em seu computador estiver desativada, clique em **Iniciar > Executar**. Digite **D: \autorun.exe**, onde D: representa a letra da sua unidade de CD-ROM.

Clique em Assistente de Configuração e siga as instruções para instalar o seu produto.

Clique no ícone Assistente de configuração D-Link SE que foi criado no seu menu Iniciar do Windows (**Iniciar > D-Link > Assistente de configuração SE**).

O Assistente de configuração irá aparecer e mostrar o endereço MAC e endereço IP de sua câmera. Se você tiver um servidor DHCP em sua rede, um endereço IP válido será exibido. Se sua rede não utilizar um servidor DHCP, o endereço IP **192.168.0.20** da câmera será exibido.

Selecione sua câmera, em seguida, clique no botão Assistente para continuar.

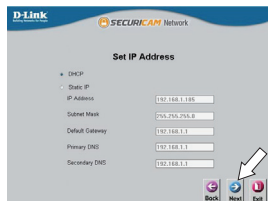
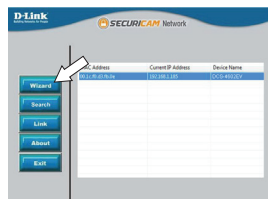
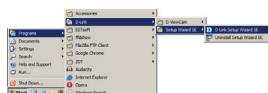
Digite o ID de administrador e senha. Ao efetuar login pela primeira vez, o ID do administrador padrão é admin com a senha em branco.

Clique nas caixas se você deseja mudar o ID e senha para a câmera, e digite o novo ID e senha que você deseja usar.

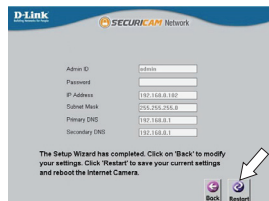
Clique em Avançar para continuar.

Selecione a opção **DHCP** se sua câmera obtém um endereço IP automaticamente a partir de um servidor DHCP (como um roteador).
Selecione IP estático se você quiser inserir manualmente as configurações de IP para sua câmera.

Clique em Avançar para continuar.

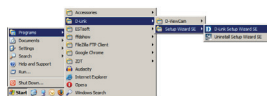


Espere um momento para confirmar as configurações e clique em Reiniciar.



Como visualizar sua câmera através de um navegador Web

Clique no ícone Assistente de configuração D-Link SE que foi criado no seu menu Iniciar do Windows (**Iniciar > D-Link > Assistente de configuração SE**).

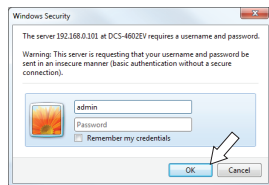


Selecione a câmera e clique no **link** para acessar a configuração web.



O Assistente de Configuração irá abrir automaticamente o seu navegador para o endereço IP da câmera.

Digite **admin** como o nome de usuário padrão e deixe a senha em branco. Clique em **OK** para continuar.



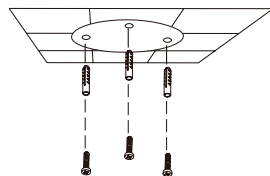
Esta seção exibe o vídeo ao vivo da câmera. Você pode selecionar o perfil de vídeo e visualizar ou operar a câmera. Para obter informações adicionais sobre a configuração web, por favor, consulte o manual do usuário incluído no CD-ROM ou no site da D-Link.



Instruções de montagem

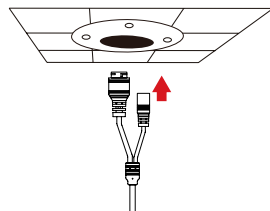
É altamente recomendável que você configure e teste sua câmera antes de montá-la.

Coloque o adesivo de montagem onde você deseja posicionar a câmera.

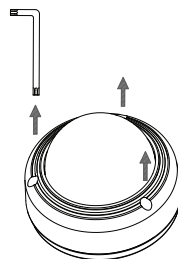


Use uma broca 6 milímetros para fazer os furos necessários cerca de 25 mm de profundidade, em seguida, insira as buchas nos furos.

Se você estiver passando os cabos da câmera através da parede, faça um buraco no centro e puxe os cabos através do orifício.

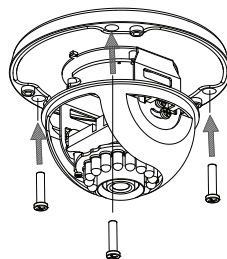


Use a chave incluída para afrouxar os três parafusos na parte superior da câmera, em seguida, levante a tampa da câmera para cima.

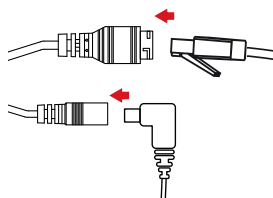


Use os parafusos fornecidos para montar a câmera na parede.

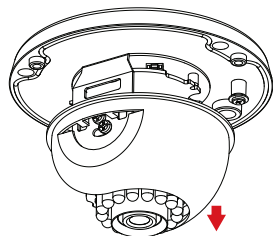
Se você estiver passando os cabos ao lado da câmera, guie os mesmos através da base.



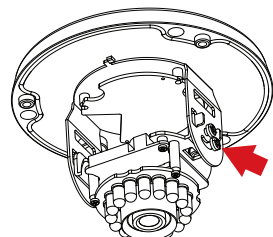
Ligue a alimentação e os cabos Ethernet, ou apenas o cabo Ethernet se você estiver usando uma conexão PoE.



Para ajustar o ângulo da câmera, retire a tampa interior e remova-a da câmera.



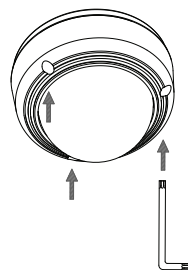
Solte o parafuso de ajuste no lado da câmara, volte a apertá-lo depois de mover a câmera para o ângulo desejado. Você também pode girar a câmera, segurando a mesma para a esquerda ou direita.



Quando você terminar de ajustar o ângulo da câmera, coloque a tampa interna de volta no lugar.

Nota: A câmera tem limitação de movimento; se ela parar quando você está ajustando-a, não tente girar ou inclinar mais a câmera.

Recoloque a tampa da câmera.

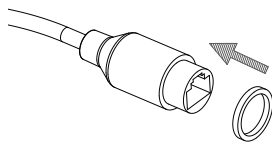


Se você precisa dar proteção a prova d'água para a câmera, por favor, veja página seguinte.

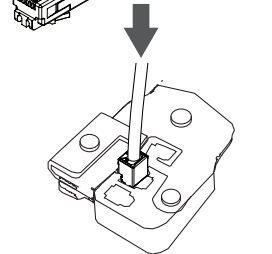
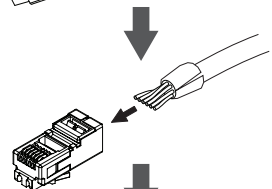
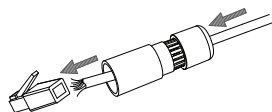
Impermeabilização de sua camera

Para impermeabilizar a instalação sua câmera, siga as instruções abaixo. Um cabo Ethernet, uma ferramenta de compressão, e conector RJ-45 são necessárias para este procedimento.

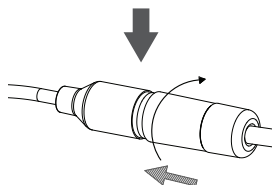
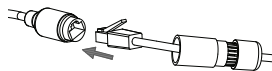
Coloque a anilha em torno da base do conector Ethernet conforme mostrado.



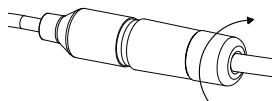
Passo o cabo Ethernet através do conector à prova d'água, como mostrado, em seguida, crimpe o conector RJ45 no cabo.



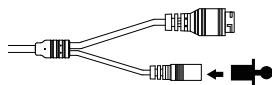
Conecte o plugue RJ45 no conector Ethernet, então o parafuso do conector à prova d'água para o conector Ethernet, rodando-o sobre uma meia-volta no sentido horário.



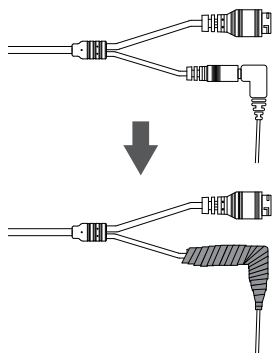
Parafuse na parte de trás no sentido horário até que haja um selo apertado em volta do cabo Ethernet.



Se você estiver usando uma conexão PoE para alimentar a câmera, use o anel de borracha incluído ao conector de alimentação.



Se você estiver usando um adaptador de energia (não incluído) para alimentar a câmera, enrole a fita à prova d'água ao redor da conexão de forma sobreposta para cobri-lo.



Informações Adicionais

Ajuda adicional e informações sobre o produto estão disponíveis online em <http://www.dlink.com>.

Informações sobre garantia

Por favor, visite <http://warranty.dlink.com/> para informações de garantia para a sua região.

快速安裝指南

此安裝指南提供安裝DCS-4602EV網路攝影機在您網路的基本操作。若要取得更多關於使用此攝影機的方式，請參考光碟內附的使用手冊，或至D-Link技術支援網站下載產品使用手冊。

包裝內容

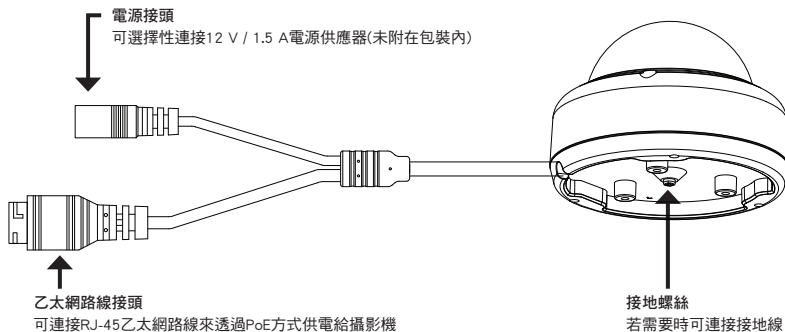
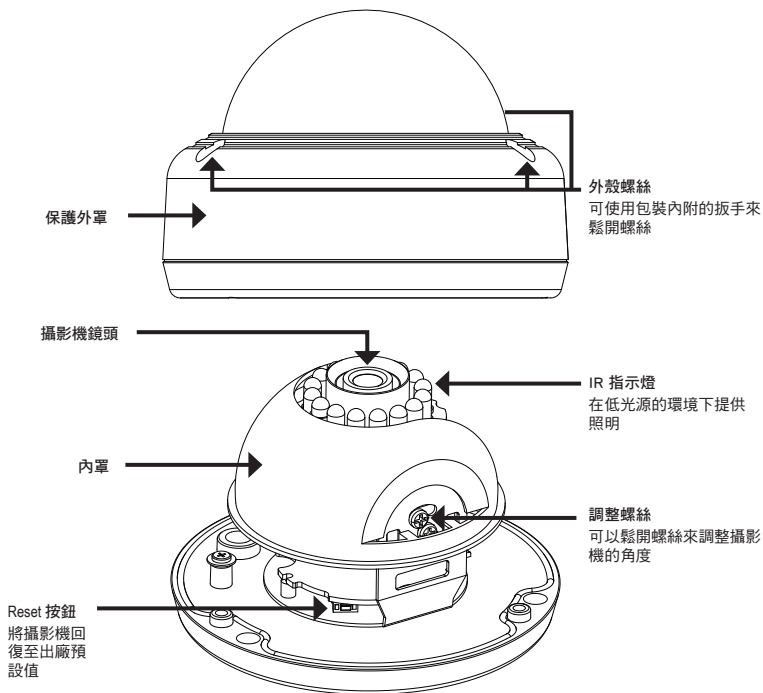
- DCS-4602EV Full HD 室外防破壞 PoE半球型攝影機
- 網路線防水連接器
- 橡膠電源連接頭
- 壁掛配件
- 光碟(包含使用手冊及安裝程式)
- 快速安裝指南

若有缺少上述的任何物品，請聯絡您的經銷商。

安全須知:

此產品應該由具備相關證照的技術人員安裝，以符合當地的法規及避免產品的保固失效。

硬體概觀



使用精靈來設定攝影機

請將包裝內附的光碟放入您電腦的光碟機並開始執行安裝。若您電腦的自動執行功能已被停用，或D-Link Launcher無法自動執行時，請點選開始>執行後輸入「D:\autorun.exe」(D代表您光碟機的代號)。

在點選Setup Wizard來開始安裝。



請點選Windows開始選單中的D-Link Setup Wizard SE圖示(開始> D-Link > Setup Wizard SE)。

設定精靈中將會顯示您攝影機的MAC位址及IP位址。若您的網路中有DHCP伺服器時，將會顯示由DHCP派發的有效IP位址。若您的網路中沒有DHCP伺服器，則將會顯示攝影機的預設IP位址192.168.0.20。



請選擇您的攝影機，再點選「Wizard」的按鈕來繼續。

請輸入管理者(Admin)的名稱和密碼。在首次登入時，預設的管理者名稱為「admin」無密碼。



若您要更改攝影機的管理者(admin)名稱和密碼時請勾選核取方塊，並輸入您要設定的新名稱及密碼。

請點選「Next」來繼續。

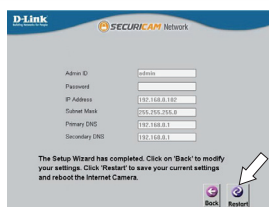
若您要讓攝影機在開機後自動由DHCP伺服器(例如路由器)取得IP位址時請選擇「DHCP」。

若您要讓攝影機每次皆使用相同的IP時請選擇「Static IP」並輸入您要使用的IP位址。



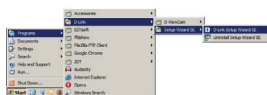
請點選「Next」來繼續。

請確認您的設定是否正確並點選「Restart」來重新啟動攝影機。



透過網頁瀏覽器來觀看攝影機影像

請點選Windows開始選單中的D-Link Setup Wizard SE圖示 (開始> D-Link > Setup Wizard SE)。

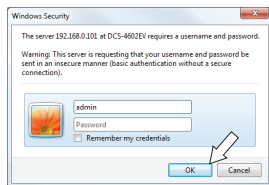


請選擇攝影機並點選「Link」的按鈕來連結網頁設定介面。

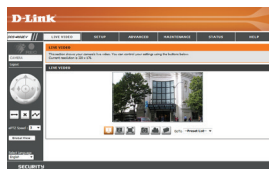
設定精靈將會自動以攝影機的IP位址來開啟設定網頁。



請在「User name」的欄位中輸入預設的「admin」，「Password」的欄位不需輸入(空白)並點選「OK」來進入設定網頁。



畫面中會顯示您攝影機的即時影像，您可以選擇影像設定檔來觀看或調整設定。若要取得更多關於設定網頁的資訊，請參考包裝內附的光碟或D-Link網站上的使用手冊。

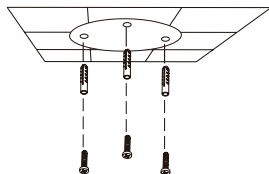


壁掛方式

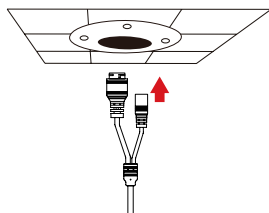
建議您在壁掛前先完成所有設定並確認可連通網路。

請將定位貼紙黏貼至您想要安裝攝影機的位置。

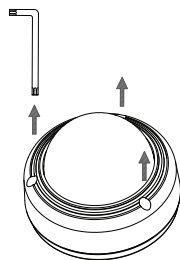
請依照牆面的材質以適當的工具，用6mm的鑽頭鑽約25mm深的孔，然後放入壁虎以支撐螺絲。



若您要將攝影機的線材穿過牆壁，請在中央鑽孔並拉線穿過牆壁。

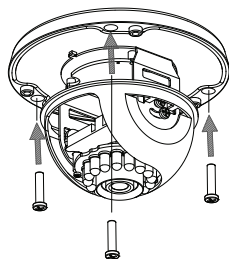


請使用包裝內附的扳手將攝影機外罩的3個螺絲鬆開，再打開攝影機外罩。

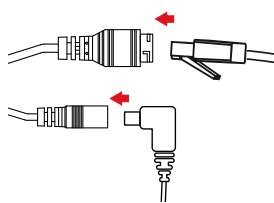


請使用包裝內附的螺絲來將攝影機鎖上牆壁。

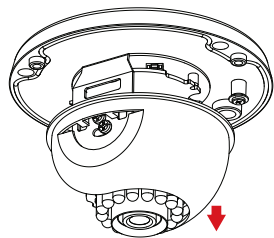
若您要將攝影機的線材放置在攝影機旁，請將線材沿著底座的線槽放置。



連接電源線及乙太網路線，若您要使用PoE連線時則僅需要連接乙太網路線。



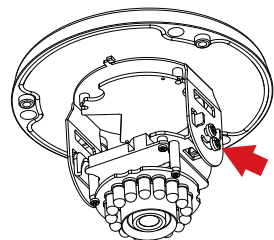
若要調整攝影機的角度，請拉起並取下黑色內罩。



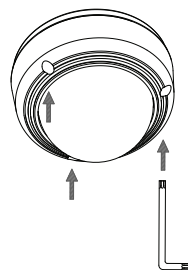
您可將攝影機側邊的調整螺絲轉鬆，將攝影機調整至您想要的位置及角度後再將螺絲轉緊。您也可以握住攝影機往左或往右轉動。

在您調整完攝影機的角度後，請將內罩放回。

備註: 因為攝影機可轉動的範圍有限，若您在調整時停在某個位置，請勿再嘗試做進一步的轉動。



請將攝影機的外罩裝回。

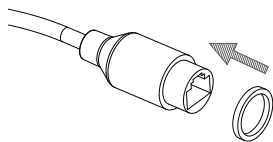


您需要防水的安裝資訊，請繼續參考下一頁的說明。

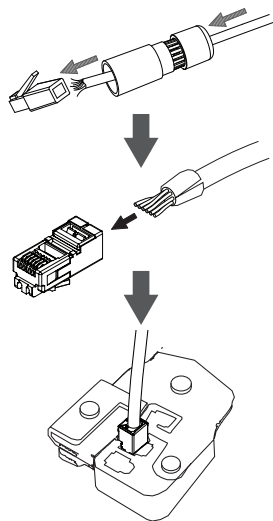
防水安裝方式

請依照以下的指示來進行防水的安裝，此程序需要乙太網路線(圓線)、壓線鉗及RJ-45接頭。

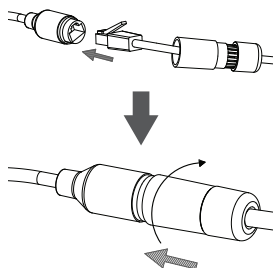
請依圖示將墊圈放置在乙太網路線接埠的底座周圍。



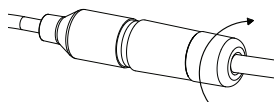
請依圖示將乙太網路線穿過防水連接器，再使用壓線鉗將RJ-45接頭壓至線材。



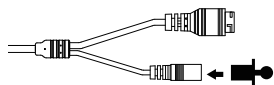
請將RJ-45的接頭插入至乙太網路連接埠，再以順時針方向轉約半圈來將防水接頭鎖上乙太網路連接埠。



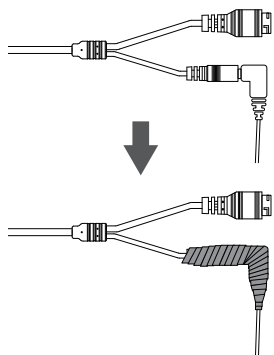
請以順時針方向轉動防水連接器的後方直到緊貼至乙太網路線。



若您要使用PoE來供電給攝影機，請使用包裝內附的橡膠電源接頭插入至電源接孔。



若您要使用電源供應器(未附在包裝內)來供電給攝影機，請用防水膠帶重疊纏繞在連接埠和接頭的周圍。



其他資訊

請造訪官方網站<http://www.dlink.com>來取得更多產品的相關資訊與協助。

保固資訊

請造訪網站<http://warranty.dlink.com>來查看在您地區的保固資訊。

PANDUAN INSTALASI CEPAT

Panduan instalasi ini memberikan petunjuk dasar cara menginstal IP Kamera pada jaringan Anda. Untuk informasi tambahan tentang cara menggunakan kamera, silakan lihat Manual Pengguna yang tersedia di CD yang disertakan dalam paket ini atau dari situs web dukungan D-Link.

Isi Kemasan

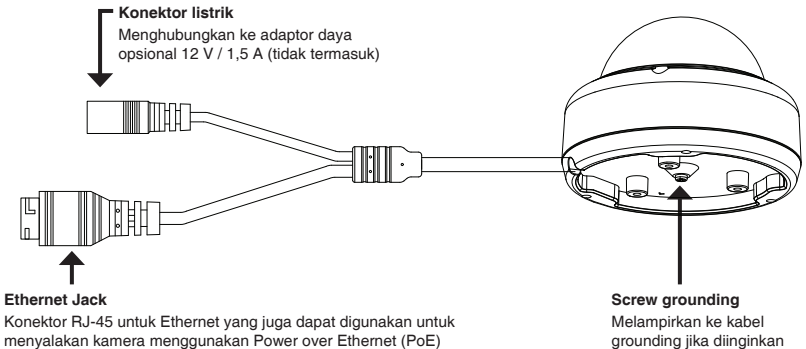
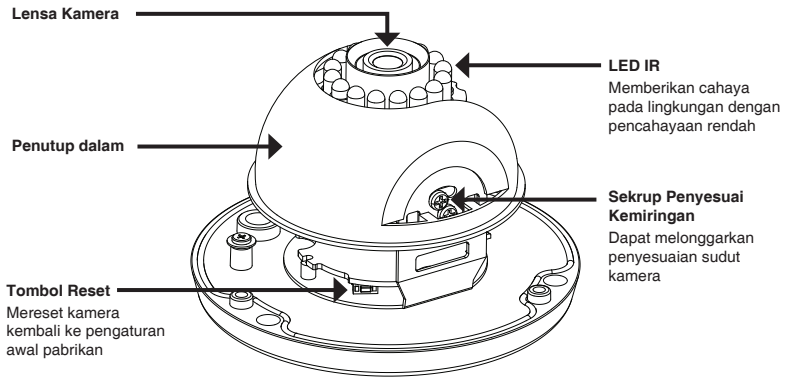
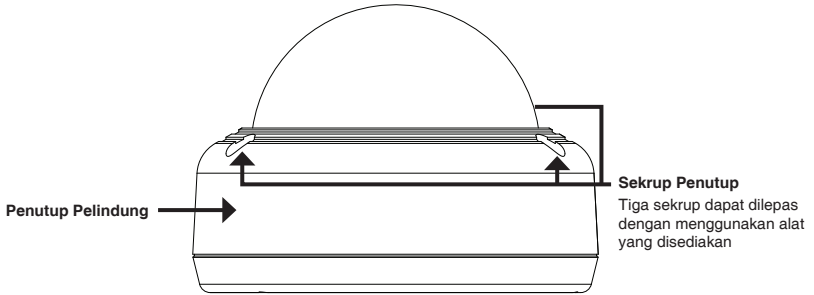
- DCS-4602EV Kamera Keamanan Dome Outdoor Full HD Vandal-Proof PoE
- Kabel Waterproofing Connector
- Karet Power Konektor Plug
- Mounting Kit
- Manual dan Software pada CD-ROM
- Panduan Instalasi Cepat

Bila terdapat bagian yang hilang, harap segera hubungi penjual Anda.

Catatan Keselamatan:

Instalasi dan servis harus dilakukan oleh teknisi bersertifikat sehingga dapat sesuai dengan semua kode lokal dan mencegah hilangnya garansi Anda.

Tinjauan Perangkat Keras



Mengkonfigurasi Kamera

Masukkan CD DCS-4602EV ke CD-ROM drive komputer Anda untuk memulai instalasi. Jika fungsi Autorun pada komputer Anda dinonaktifkan, atau jika D-Link Launcher gagal untuk memulai secara otomatis, klik **Start>Run**. Ketikkan **D:\autorun.exe**, di mana D: mewakili huruf drive dari drive CD-ROM Anda.

Klik **Setup Wizard** dan ikuti petunjuk untuk menginstal Setup Wizard.

Klik pada ikon **D-Link Setup Wizard SE** yang di menu Start Windows (**Start> D-Link> Setup Wizard SE**).

Setup Wizard akan muncul dan menampilkan alamat MAC dan alamat IP dari kamera Anda. Jika Anda memiliki sebuah server DHCP pada jaringan Anda, sebuah IP Address yang valid akan ditampilkan. Jika jaringan Anda tidak menggunakan server DHCP, IP default **192.168.0.20** kamera jaringan akan ditampilkan.

Pilih kamera Anda, kemudian klik tombol **Wizard** untuk melanjutkan.

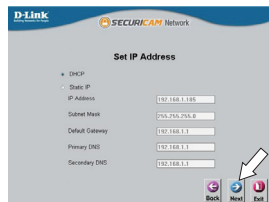
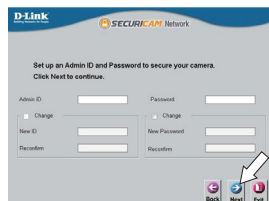
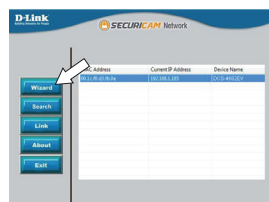
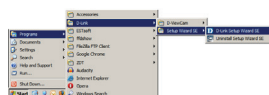
Masukkan ID Admin dan password. Ketika log in untuk pertama kalinya, ID Admin default adalah **admin** dengan password dikosongkan.

Klik kotak centang jika Anda ingin mengubah ID dan password admin kamera, dan masukkan ID dan password baru yang ingin Anda gunakan.

Klik **Next** untuk melanjutkan.

Pilih **DHCP** jika kamera Anda memperoleh alamat IP secara otomatis dari server DHCP seperti router. Pilih **Static IP** jika Anda ingin secara manual memasukkan pengaturan IP kamera.

Klik **Next** untuk melanjutkan.

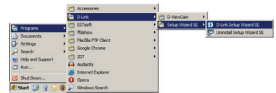


Luangkan waktu sejenak untuk mengkonfirmasi pengaturan Anda dan klik **Restart**.



Melihat Kamera Anda via Web Browser

Klik pada ikon **D-Link Setup Wizard SE** pada menu Start Windows (**Start**> **D-Link**> **Setup Wizard SE**).



Pilih kamera dan klik **Link** untuk mengakses konfigurasi web.



Setup Wizard akan secara otomatis membuka browser web Anda ke alamat IP kamera.

Masukkan **admin** sebagai username default dan password dibiarkan kosong. Klik **OK** untuk melanjutkan.



Bagian ini menampilkan tampilan langsung video kamera Anda. Anda dapat memilih video profil dan melihat atau mengoperasikan kamera. Untuk informasi tambahan tentang konfigurasi web, silakan lihat panduan pengguna yang disertakan pada CD-ROM atau website D-Link.

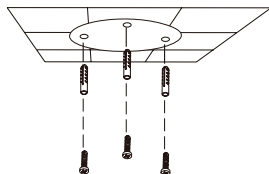


Instruksi Pemasangan

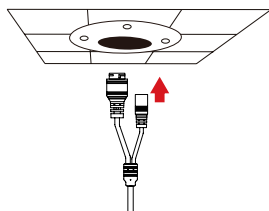
Hal ini sangat disarankan agar Anda mengkonfigurasi dan menguji kamera Anda sebelum pemasangan.

Tempatkan stiker pemasangan di mana Anda ingin posisikan kamera.

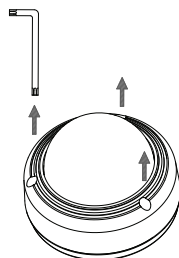
Gunakan bor 6 mm untuk membuat lubang yang diperlukan dengan kedalaman sekitar 25 mm, kemudian masukkan jangkar dinding ke dalam lubang.



Jika Anda menjalankan kabel kamera melalui dinding, bor sebuah lubang di tengah dan tarik kabel melalui lubang.

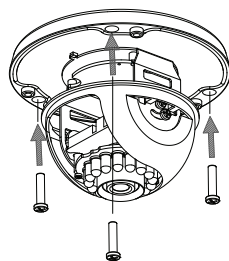


Gunakan kunci pas yang termasuk dalam kemasan untuk melonggarkan 3 sekrup di bagian atas kamera, lalu angkat penutup kamera.

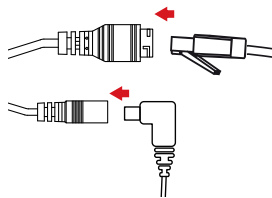


Gunakan sekrup yang disediakan untuk memasang kamera ke dinding.

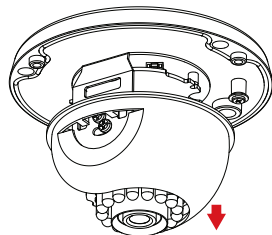
Jika Anda menjalankan kabel kamera keluar sisi kamera, arahkan kabel kamera melalui saluran kabel di pangkalan.



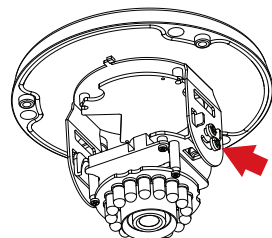
Hubungkan daya dan kabel Ethernet, atau hanya kabel Ethernet jika Anda menggunakan koneksi PoE.



Untuk menyesuaikan sudut kamera, tarik penutup hitam bagian dalam dan lepaskan dari kamera.



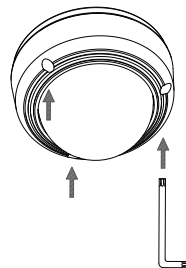
Kendurkan sekrup penyesuaian di sisi kamera, kemudian kencangkan kembali setelah memindahkan kamera ke sudut yang diinginkan. Anda juga dapat memutar kamera dengan memegang kamera dan menggesernya ke kiri atau kanan.



Ketika Anda selesai menyesuaikan sudut kamera, tempatkan penutup bagian dalam kembali ke tempatnya.

Catatan: Kamera ini memiliki ruang gerak yang terbatas; jika berhenti saat Anda sedang menyesuaikan, jangan mencoba untuk memutar atau memiringkan kamera lebih jauh ke arah tersebut.

Pasang kembali penutup kamera.

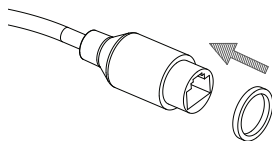


Jika Anda perlu untuk instalasi tahan air, silakan lanjutkan ke halaman berikutnya.

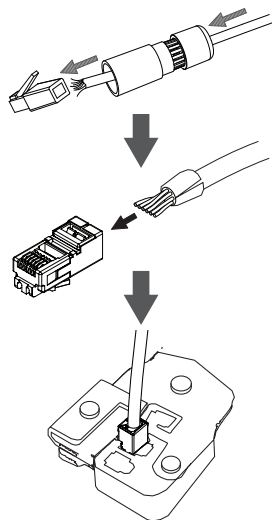
Instalasi Agar Tahan Air

Untuk instalasi kamera tahan air, ikuti petunjuk di bawah ini. Kabel Ethernet, sebuah alat crimping, dan colokan RJ-45 diperlukan untuk prosedur ini.

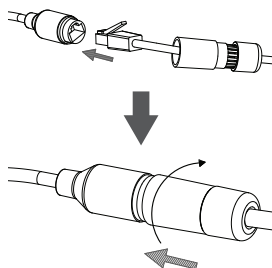
Tempatkan pencuci di sekitar konektor Ethernet seperti yang ditunjukkan.



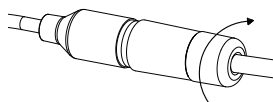
Masukkan kabel Ethernet melalui konektor tahan air seperti yang ditunjukkan, kemudian krimp konektor RJ-45 ke kabel.



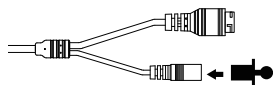
Hubungkan RJ-45 ke konektor Ethernet, kemudian sekrup konektor tahan air ke konektor Ethernet dengan memutarinya searah jarum jam sekitar setengah-putaran.



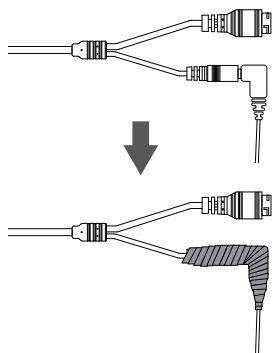
Sekrup kembali bagian belakang konektor tahan air searah jarum jam sampai ada segel ketat di sekitar kabel Ethernet.



Jika Anda menggunakan PoE untuk menyalakan kamera Anda, gunakan konektor karet yang disertakan ke konektor listrik.



Jika Anda menggunakan adaptor daya (tidak termasuk) untuk menyalakan kamera, lilit dengan isolasi tahan air di sekitar sambungan secara umum untuk menutupinya.



Informasi Tambahan

Bantuan tambahan dan informasi produk tersedia secara online di <http://www.dlink.com>.

Informasi garansi

Silahkan kunjungi <http://warranty.dlink.com/> untuk informasi garansi wilayah Anda.

FCC Warning

This equipment has been tested and found to comply with the limits for a Class A digital device, pursuant to Part 15 of the FCC Rules. These limits are designed to provide reasonable protection against harmful interference when the equipment is operated in a commercial environment. This equipment generates, uses, and can radiate radio frequency energy and, if not installed and used in accordance with this manual, may cause harmful interference to radio communications. Operation of this equipment in a residential area is likely to cause harmful interference in which case the user will be required to correct the interference at his own expense.

CE Mark Warning

This is a Class A product. In a domestic environment, this product may cause radio interference in which case the user may be required to take adequate measures.

Warnung!

Dies ist ein Produkt der Klasse A. Im Wohnbereich kann dieses Produkt Funkstörungen verursachen. In diesem Fall kann vom Benutzer verlangt werden, angemessene Massnahmen zu ergreifen.

Precaución!

Este es un producto de Clase A. En un entorno doméstico, puede causar interferencias de radio, en cuyo caso, puede requerirse al usuario para que adopte las medidas adecuadas.

Attention!

Ceci est un produit de classe A. Dans un environnement domestique, ce produit pourrait causer des interférences radio, auquel cas l'utilisateur devrait prendre les mesures adéquates.

Attenzione!

Il presente prodotto appartiene alla classe A. Se utilizzato in ambiente domestico il prodotto può causare interferenze radio, nel cui caso è possibile che l'utente debba assumere provvedimenti adeguati.

警告使用者：

這是甲類的資訊產品，在居住的環境中使用時，可能會造成射頻干擾，在這種情況下，使用者會被要求採取某些適當的對策。

低功率電波輻射性電機管理辦法

第十二條 經型式認證合格之低功率射頻電機，非經許可，公司、商號或使用者均不得擅自變更頻率、加大功率或變更原設計之特性及功能。

第十四條 低功率射頻電機之使用不得影響飛航安全及干擾合法通信；經發現有干擾現象時，應立即停用，並改善至無干擾時方得繼續使用。

前項合法通信，指依電信法規定作業之無線電信。低功率射頻電機須忍受合法通信或工業、科學及醫療用電波輻射性電機設備之干擾。

FCC Caution:

Any changes or modifications not expressly approved by the party responsible for compliance could void the user's authority to operate this equipment.

This transmitter must not be co-located or operating in conjunction with any other antenna or transmitter.

IMPORTANT NOTICE:

FCC Radiation Exposure Statement:

This equipment complies with FCC radiation exposure limits set forth for an uncontrolled environment. This equipment should be installed and operated with minimum distance 20cm between the radiator & your body.

The availability of some specific channels and/or operational frequency bands are country dependent and are firmware programmed at the factory to match the intended destination. The firmware setting is not accessible by the end user.

For detailed warranty information applicable to products purchased outside the United States, please contact the corresponding local D-Link office.

Industry Canada Statement:

This device complies with RSS-210 of the Industry Canada Rules. Operation is subject to the following two conditions: (1) This device may not cause harmful interference, and (2) this device must accept any interference received, including interference that may cause undesired operation.

IMPORTANT NOTE:

Radiation Exposure Statement:

This equipment complies with IC radiation exposure limits set forth for an uncontrolled environment. This equipment should be installed and operated with minimum distance 20cm between the radiator & your body.

Warranty Information

The D-Link Limited Lifetime Warranty information is available at <http://warranty.dlink.com/>

SAFETY INSTRUCTIONS

Please adhere to the following safety guidelines to help ensure your own personal safety and protect your system from potential damage. Any acts taken that are inconsistent with ordinary use of the product, including improper testing, etc., and those not expressly approved by D-Link may result in the loss of product warranty.

Unless expressly approved by an authorized representative of D-Link in writing, you may not and may not permit others to:

- Disassemble or reverse engineer the device or attempt to derive source code (underlying ideas, algorithms, or structure) from the device or from any other information provided by D-Link, except to the extent that this restriction is expressly prohibited by local law.
- Modify or alter the device.
- Remove from the device any product identification or other notices, including copyright notices and patent markings, if any.

To reduce the risk of bodily injury, electrical shock, fire, and damage to the device and other equipment, observe the following precautions:

Power Sources

- Observe and follow service markings.
- Do not push any objects into the openings of your device unless consistent with the authorized operation of the device. Doing so can cause a fire or an electrical shock by shorting out interior components.
- The powering of this device must adhere to the power specifications indicated for this product.
- Do not overload wall outlets and/or extension cords as this will increase the risk of fire or electrical shock.
- Do not rest anything on the power cord or on the device (unless the device is made and expressly approved as suitable for stacking).
- Position system cables and power cables carefully; route cables so that they cannot be stepped on or tripped over. Be sure that nothing rests on any cables.
- Operate the device only from the type of external power source indicated on the electrical ratings label.
- To help avoid damaging your device, be sure the voltage selection switch (if provided) on the power supply is set to match the power available at your location.
- Also be sure that attached devices are electrically rated to operate with the power available in your location.
- Use only approved power cable(s). If you have not been provided a power cable for your device or for any AC-powered option intended for your device, purchase a power cable that is approved for use in your country and is suitable for use with your device. The power cable must be rated for the device and for the voltage and current marked on the device's electrical ratings label. The voltage and current rating of the cable should be greater than the ratings marked on the device.
- To help prevent an electrical shock, plug the device and peripheral power cables into properly grounded electrical outlets. These cables are equipped with three-prong plugs to help ensure proper grounding. Do not use adapter plugs or remove

the grounding prong from a cable. If you must use an extension cable, use a 3-wire cable with properly grounded plugs.

- Observe extension cable and power strip ratings. Ensure that the total ampere rating of all products plugged into the extension cable or power strip does not exceed 80 percent of the ampere ratings limit for the extension cable or power strip.
- To help protect your device from sudden, transient increases and decreases in electrical power, use a surge suppressor, line conditioner, or uninterruptible power supply (UPS).
- Do not modify power cables or plugs. Consult a licensed electrician or your power company for site modifications. Always follow your local/national wiring rules.
- When connecting or disconnecting power to hot-pluggable power supplies, if offered with your device, observe the following guidelines:
 - Install the power supply before connecting the power cable to the power supply.
 - Unplug the power cable before removing the power supply.
 - If the system has multiple sources of power, disconnect power from the device by unplugging all power cables from the power supplies.

Servicing/Disassembling

- Do not service any product except as expressly set forth in your system documentation.
- Opening or removing covers that are marked with the triangular symbol with a lightning bolt may expose you to an electrical shock. Only a trained service technician should service components inside these compartments.
- To reduce the risk of electrical shock, never disassemble this device. None of its internal parts are user-replaceable; therefore, there is no reason to access the interior.
- Do not spill food or liquids on your system components, and never operate the device in a wet environment. If the device gets wet, see the appropriate section in your troubleshooting guide or contact your trained service provider.
- Use the device only with approved equipment.
- Move products with care; ensure that all casters and/or stabilizers are firmly connected to the system. Avoid sudden stops and uneven surfaces.

Environment

- Do not use this device near water (e.g. near a bathtub, sink, laundry tub, fish tank, in a wet basement or near a swimming pool).
- Do not use this device in areas with high humidity.
- This device must not be subjected to water or condensation.
- Keep your device away from radiators and heat sources. Also, do not block cooling vents.

Cleaning

- Always unplug the power before cleaning this device.
- Do not use liquid or aerosol cleaners of any kind. Use only compressed air that is recommended for electronic devices.
- Use a dry cloth for cleaning.

PROTECTING AGAINST ELECTROSTATIC DISCHARGE

Static electricity can harm delicate components inside your system. To prevent static damage, discharge static electricity from your body before you touch any of the electronic components, such as the microprocessor. You can do so by periodically touching an unpainted metal surface on the chassis.

You can also take the following steps to help prevent damage from electrostatic discharge (ESD):

1. When unpacking a static-sensitive component from its shipping carton, do not remove the component from the antistatic packing material until you are ready to install the component in your system. Just before unwrapping the antistatic packaging, be sure to discharge static electricity from your body.
2. When transporting a sensitive component, first place it in an antistatic container or packaging.
3. Handle all sensitive components in a static-safe area. If possible, use antistatic floor pads, workbench pads, and an antistatic grounding str

INSTRUCCIONES DE SEGURIDAD

Por favor siga las siguientes instrucciones de seguridad para garantizar su propia seguridad personal y proteger el equipo de posibles daños. Cualquier acto realizado que sea incompatible con el uso normal del producto, incluyendo pruebas no apropiadas, etc., y aquellos que no estén expresamente autorizados por D-Link pueden dar lugar a la pérdida de la garantía del producto.

A menos que estén expresamente aprobados por escrito por un representante autorizado de D-Link, usted no puede no puede:

- Desmontar o alterar el diseño del dispositivo o intentar obtener el código fuente (ideas subyacentes, algoritmos, o estructura del mismo) del dispositivo o de cualquier otra información proporcionada por D-Link, salvo en el caso en que esta restricción esté expresamente prohibida por la ley local.
- Modificar o alterar el dispositivo.
- Retirar la identificación del producto u otras notificaciones, incluyendo las notificaciones de copyright y marcado de patente, si fuera el caso.

Para reducir el riesgo de lesiones personales, descargas eléctricas, incendios y daños al aparato y otro equipamiento, tome las siguientes precauciones:

Fuentes de alimentación

- Lea y siga atentamente las instrucciones de uso.
- No introduzca ningún objeto en las aberturas de su dispositivo. Si lo hace, puede provocar un incendio o recibir una descarga eléctrica debido a un cortocircuito de los componentes internos.
- El suministro eléctrico debe cumplir con las especificaciones de alimentación indicadas para este producto.
- No sobrecargue los enchufes de pared y / o cables de extensión ya que esto aumentará el riesgo de producir un incendio o recibir una descarga eléctrica.
- No apoye nada sobre el cable de alimentación o encima el dispositivo (a menos que el

dispositivo esté diseñado y expresamente aprobado para ello).

- Coloque los cables del equipo y de la fuente de alimentación con cuidado, de forma que no se puedan pisar o tropezar fácilmente con ellos. Asegúrese de que no apoye nada sobre los cables.
- Utilice el dispositivo sólo con una fuente de alimentación externa que cumpla con las especificaciones eléctricas de la etiqueta.
- Para ayudar a evitar daños en el dispositivo, asegúrese de que el selector de voltaje (si existe) de la fuente de alimentación está ajustado para la tensión disponible en su localidad.
- Asegúrese también de que los dispositivos conectados estén clasificados eléctricamente para funcionar con la tensión disponible en su ubicación.
- Utilice únicamente cables de alimentación aprobados. Si el equipo no viniera con cable de alimentación o con cualquier otra opción de alimentación para corriente alterna, compre un cable de alimentación que esté aprobado para uso en su país y sea adecuado para su uso con el dispositivo. El cable de alimentación debe estar aprobado para el dispositivo y para el voltaje/corriente marcado en la etiqueta de especificaciones eléctricas que incluye el dispositivo, debiendo ser el valor de voltaje/corriente del cable superior al de las especificaciones.
- Para ayudar a prevenir una descarga eléctrica, conecte el dispositivo en enchufes que dispongan de su correspondiente toma de tierra. Los cables están equipados con enchufes de tres clavijas para garantizar una conexión a tierra adecuada. No utilice adaptadores ni retire la clavija de conexión a tierra de un cable. Si tiene que utilizar un cable de extensión, utilice un cable de 3 hilos con enchufes adecuadamente conectados a tierra.
- Asegúrese de que el amperaje total de todos los productos conectados al cable de extensión o regleta de alimentación no sea superior al 80 por ciento del amperaje límite del cable de extensión o de la regleta.
- Para ayudar a proteger el dispositivo de cambios repentinos, transitorios o disminuciones de la señal eléctrica, utilice un supresor de sobretensiones, un acondicionador de línea, o una fuente de alimentación ininterrumpida (SAI).
- No modifique los cables de alimentación o los enchufes. Consulte a un electricista autorizado o con la compañía eléctrica para realizar las modificaciones necesarias. Siga siempre la normativa de cableado local/nacional.
- Al conectar o desconectar la alimentación de las fuentes de alimentación conectables en caliente, si fuera el caso de su dispositivo, siga las siguientes pautas:
 - Instale la fuente de alimentación antes de proporcionar alimentación a la misma.
 - Desconecte la alimentación antes de retirar el cable de alimentación.
 - Si el sistema tiene múltiples fuentes de alimentación, desconecte la alimentación del mismo, y desenchufe todos los cables de alimentación de las fuentes de alimentación.
 - En el caso de que la fuente de alimentación sea el dispositivo de desconexión del equipo. La base de toma de corriente debe estar cerca del equipo y ser fácilmente accesible.

Manipulación/ Desmontaje

- No manipule el producto, salvo que esté expresamente establecido en la documentación del equipo.
- Si abre o retira las cubiertas que están marcadas con el símbolo triangular con un rayo puede exponerse a una descarga eléctrica. Sólo un técnico cualificado debe reparar

los componentes dentro de estos compartimientos.

- Para reducir el riesgo de descarga eléctrica, no desmonte el dispositivo. Ninguno de sus partes internas es sustituible por el usuario, por lo tanto, no hay ninguna razón para acceder al interior.
- No derrame comida ni líquidos sobre los componentes del sistema, y nunca utilice el dispositivo en un ambiente húmedo. Si el dispositivo se moja, consulte la sección correspondiente a solución de problemas o contacte con su proveedor.
- Utilice el dispositivo sólo con equipamiento aprobado.
- Mueva los productos con cuidado; asegúrese de que todos los estabilizadores están firmemente sujetos al equipo. Evite las detenciones repentinas y las superficies irregulares.

Medio Ambiente

- No utilice este aparato cerca del agua (por ejemplo, cerca de una bañera, fregadero, lavadero, peceras, en un sótano húmedo o cerca de una piscina).
- No utilice este dispositivo en lugares con alta humedad.
- Este dispositivo no debe ser sometido al agua o la condensación.
- Mantenga el dispositivo alejado de radiadores y fuentes de calor. Asimismo, no bloquee las rejillas de ventilación.

Limpieza

- Desconecte siempre la alimentación antes de limpiar este dispositivo.
- No utilice limpiadores en aerosol o líquidos de ningún tipo. Use sólo aire comprimido recomendado para dispositivos electrónicos.
- Utilice un paño seco para limpiarlo.

PROTECCIÓN CONTRA DESCARGAS ELECTROSTÁTICAS

La electricidad estática puede dañar componentes delicados de su sistema. Para evitar daños por electricidad estática, descargar la electricidad estática de su cuerpo antes de tocar cualquiera de los componentes electrónicos, tales como el microprocesador. Puede hacerlo con un toque periódicamente de una superficie metálica sin pintura del propio chasis del equipo.

También puede realizar los siguientes pasos para ayudar a prevenir posibles daños por descargas electrostáticas:

1. Al desembalar un componente sensible a la electricidad estática de su caja de envío, no retire el material de embalaje antiestático hasta que esté listo para instalar el componente en su sistema. Justo antes de abrir el embalaje antiestático, asegúrese de descargar la electricidad estática de su cuerpo.
2. Cuando transporte un componente sensible a la electricidad estática, colóquelo en un contenedor o embalaje antiestático.
3. Maneje todos los componentes sensibles a la electricidad estática en un área de prueba libre de cargas electrostáticas. Si es posible, utilice alfombrillas antiestáticas en el suelo, el banco de trabajo, y una correa antiestática con conexión a tierra.

EUROPEAN COMMUNITY DECLARATION OF CONFORMITY

Česky [Czech]	D-Link Corporation tímto prohlašuje, že tento je ve shodě se základními požadavky a dalšími příslušnými ustanoveními směrnice 1999/5/ES.
Dansk [Danish]	Undertegnede D-Link Corporation erklærer herved, at følgende udstyr overholder de væsentlige krav og øvrige relevante krav i direktiv 1999/5/EF.
Deutsch [German]	Hiermit erkläre D-Link Corporation, dass sich das Gerät in Übereinstimmung mit den grundlegenden Anforderungen und den übrigen einschlägigen Bestimmungen der Richtlinie 1999/5/EG befindet.
Eesti [Estonian]	Käesolevaga kinnitab D-Link Corporation seadme vastavust direktiivi 1999/5/EÜ põhinõuetele ja nimetatud direktiivist tulenevatele teistele asjakohastele sätetele.
English	Hereby, D-Link Corporation, declares that this is in compliance with the essential requirements and other relevant provisions of Directive 1999/5/EC.
Español [Spanish]	Por medio de la presente D-Link Corporation declara que el cumple con los requisitos esenciales y cualesquiera otras disposiciones aplicables o exigibles de la Directiva 1999/5/CE.
Ελληνική [Greek]	ΜΕ ΤΗΝ ΠΑΡΟΥΣΑ D-Link Corporation ΔΗΛΩΝΕΙ ΟΤΙ ΣΥΜΜΟΡΦΩΝΕΤΑΙ ΠΡΟΣ ΤΙΣ ΟΥΣΙΩΔΕΙΣ ΑΠΑΙΤΗΣΕΙΣ ΚΑΙ ΤΙΣ ΛΟΙΠΕΣ ΣΧΕΤΙΚΕΣ ΔΙΑΤΑΞΕΙΣ ΤΗΣ ΟΔΗΓΙΑΣ 1999/5/ΕΚ.
Français [French]	Par la présente D-Link Corporation déclare que l'appareil est conforme aux exigences essentielles et aux autres dispositions pertinentes de la directive 1999/5/CE.
Italiano [Italian]	Con la presente D-Link Corporation dichiara che questo è conforme ai requisiti essenziali ed alle altre disposizioni pertinenti stabilite dalla direttiva 1999/5/CE.
Latviski [Latvian]	Ar šo D-Link Corporation deklarē, ka atbilst Direktīvas 1999/5/EK būtiskajām prasībām un citiem ar to saistītajiem noteikumiem.
Lietuvių [Lithuanian]	Šiuo D-Link Corporation deklaruoja, kad šis atitinka esminius reikalavimus ir kitas 1999/5/EB Direktyvos nuostatas.
Nederlands [Dutch]	Hierbij verklaart D-Link Corporation dat het toestel in overeenstemming is met de essentiële eisen en de andere relevante bepalingen van richtlijn 1999/5/EG.
Malti [Maltese]	Hawnhekk, D-Link Corporation, jiddikjara li dan jikkonforma mal-htigijiet essenzjali u ma provvedimenti oħrajn relevanti li hemm fid-Dirrettiva 1999/5/EC.
Magyar [Hungarian]	Alulírott, D-Link Corporation nyilatkozom, hogy a megfelel a vonatkozó alapvető követelményeknek és az 1999/5/EC irányelv egyéb előírásainak.
Polski [Polish]	Niniejszym D-Link Corporation oświadcza, że jest zgodny z zasadniczymi wymogami oraz pozostałymi stosownymi postanowieniami Dyrektywy 1999/5/EC.
Português [Portuguese]	D-Link Corporation declara que este D-Link Corporation está conforme com os requisitos essenciais e outras disposições da Directiva 1999/5/CE.
Slovensko [Slovenian]	D-Link Corporation izjavlja, da je ta v skladu z bistvenimi zahtevami in ostalimi relevantnimi določili direktive 1999/5/ES.

Slovensky [Slovak]	D-Link Corporation týmto vyhlasuje, že spĺňa základné požiadavky a všetky príslušné ustanovenia Smernice 1999/5/ES.
Suomi [Finnish]	D-Link Corporation vakuuttaa täten että tyyppinen laite on direktiivin 1999/5/EY oleellisten vaatimusten ja sitä koskevien direktiivin muiden ehtojen mukainen.
Svenska [Swedish]	Härmed intygar D-Link Corporation att denna står i överensstämmelse med de väsentliga egenskapskrav och övriga relevanta bestämmelser som framgår av direktiv 1999/5/EG.
Íslenska [Icelandic]	Hér með lýsir D-Link Corporation yfir því að er í samræmi við grunnkröfur og aðrar kröfur, sem gerðar eru í tilskipun 1999/5/EC.
Norsk [Norwegian]	D-Link Corporation erklærer herved at utstyret er i samsvar med de grunnleggende krav og øvrige relevante krav i direktiv 1999/5/EF.

WARNING STATEMENT

The power outlet should be nearby the device and easily accessible.

NOTICE OF WIRELESS RADIO LAN USAGE IN THE EUROPEAN COMMUNITY (ONLY FOR WIRELESS PRODUCT)

- At the time of writing this addendum, some countries such as Italy, Greece, Portugal and Spain have not allowed operation of radio devices in the 5Ghz bands, although operation of 2.4Ghz radio devices are allowed. Please check with your local authority to confirm.
- This device is restricted to indoor use when operated in the European Community using channels in the 5.15-5.35 GHz band to reduce the potential for interference.
- This device is a 2.4 GHz wideband transmission system (transceiver), intended for use in all EU member states and EFTA countries, except in France where restrictive use applies.

This device may not be used for setting up outdoor radio links in France and in some areas the RF output power may be limited to 10 mW EIRP in the frequency range of 2454 – 2483.5 MHz. For detailed information the end-user should contact the national spectrum authority in France.

This equipment may be operated in AL, AD, BE, BG, DK, DE, FI, FR, GR, GW, IS, IT, HR, LI, LU, MT, MK, MD, MC, NL, NO, AT, PL, PT, RO, SM, SE, RS, SK, ES, CI, HU, CY

Usage Notes:

- To remain in conformance with European National spectrum usage regulations, frequency and channel limitations will be applied on the products according to the country where the equipment will be deployed.
- This device is restricted from functioning in Ad-hoc mode while operating in 5Ghz. Ad-hoc mode is direct peer-to-peer communication between two client devices without an Access Point.
- Access points will support DFS (Dynamic Frequency Selection) and TPC (Transmit Power Control) functionality as required when operating in 5Ghz within the EU.



5GHz wireless frequency and channel operation in EEC countries

Allowable 802.11a Frequencies and Channels	Countries
5.15-5.25 GHz (Channels 36, 40, 44, 48)	Liechtenstein,
5.15-5.25 Ghz & 5.725-5.875 Ghz (Channels 36, 40, 44, 48, 149, 153, 157, 161, 165, 169)	Austria
5.15-5.35 GHz (Channels 36, 40, 44, 48, 52, 56, 60, 64)	France
5.15-5.35 & 5.47-5.725 GHz (Channels 36, 40, 44, 48, 52, 56, 60, 64, 100, 104, 108, 112, 116, 120, 124, 128, 132, 136, 140)	Denmark, Germany, Iceland, Finland, Netherlands, Norway, Poland, Sweden, Slovenia, Luxembourg, U.K., Ireland, Slovak, Switzerland, Hungary, Italy
5.15-5.35 Ghz & 5.725-5.875 Ghz (Channels 36, 40, 44, 48, 52, 56, 60, 64, 149, 153, 157, 161, 165, 169)	Czech Republic



2.4GHz wireless frequency operation in EEC countries

Region	Frequency band	Max output power (EIRP)
Metropolitan	2400-2454MHz	100mW
Guadeloupe, Martinique, St Pierre et Miquelon, Mayotte	2454-2483.5MHz	100mW indoor, 10mW outdoor
Reunion et Guyane	2400-2483.5MHz	100mW
Rest of EU community	2420-2483.5MHz	100mW

R&TTE 1999/5/EC

WLAN 2.4 – 2.4835 GHz

IEEE 802.11b/g/n

Spectrum regulation	MHz, Europa (ETSI)	max. EIRP Innenbereich	max. EIRP Außenbereich
Europa	2400-2483,5 MHz	100 mW	100mW
Frankreich	2400-2454 MHz	100 mW	100mW
	2454–2483,5 MHz	100 mW	10 mW

AVERTISSEMENT AUX UTILISATEURS

L'utilisation des bandes de fréquences des 2.4GHz et 5GHz pour les installations d'accès sans fil incluant les réseaux locaux radioélectriques, aussi appelés WAS/RLAN (Wireless Access System including Radio Local Area Network) est réglementée par l'ARCEP (Autorité de Régulation des Communications Electroniques et des Postes).

BANDE DE FREQUENCES DES 2.4GHZ

L'utilisation de la bande 2400-2483,5 MHz est autorisée à l'intérieur des bâtiments avec une puissance isotrope rayonnée équivalente (PIRE) limitée à 100 mW. L'utilisation en extérieur est autorisée sur la bande de fréquences de 2400-2454 MHz avec une puissance (PIRE) limitée à 100 mW et avec une puissance (PIRE) limitée à 10 mW sur la bande de fréquences 2454-2483,5 MHz.

BANDE DE FREQUENCES DES 5GHZ

Les conditions techniques d'utilisation des fréquences par des installations d'accès sans fil incluant les réseaux locaux radioélectriques (WAS/RLAN) dans la bande 5 GHz sont les suivantes :

Dans la bande de fréquences 5150-5350 MHz, les installations d'accès sans fil incluant les réseaux locaux radioélectriques (WAS/RLAN) sont limitées à une utilisation à l'intérieur des bâtiments avec une Puissance Isotrope Rayonnée Equivalente (PIRE) moyenne maximale de 200 mW.

Dans la bande de fréquences 5470-5725 MHz, l'utilisation des installations d'accès sans fil incluant les réseaux locaux radioélectriques (WAS/RLAN) à l'intérieur et à l'extérieur des bâtiments est limitée à une PIRE moyenne maximale de 1W.

Pour toute information complémentaire et les dernières informations concernant l'évolution de la réglementation française, nous vous conseillons de consulter le site de l'ARCEP : www.arcep.fr

En installant et utilisant les produits réseaux sans fil de la gamme proposée par D-Link, vous vous engagez donc à respecter cette réglementation.

CE EMI CLASS A WARNING (only for class A product)



This is a Class A product. In a domestic environment, this product may cause radio interference, in which case the user may be required to take adequate measures.

DISPOSING AND RECYCLING YOUR PRODUCT



ENGLISH

EN



This symbol on the product or packaging means that according to local laws and regulations this product should be not be disposed of in the household waste but sent for recycling. Please take it to a collection point designated by your local authorities once it has reached the end of its life, some will accept products for free. By recycling the product and its packaging in this manner you help to conserve the environment and protect human health.

D-Link and the environment

At D-Link, we understand and are committed to reducing any impact our operations and products may have on the environment. To minimise this impact D-Link designs and builds its products to be as environmentally friendly as possible, by using recyclable, low toxic materials in both products and packaging.

D-Link recommends that you always switch off or unplug your D-Link products when they are not in use. By doing so you will help to save energy and reduce CO2 emissions.

To learn more about our environmentally responsible products and packaging please visit www.dlinkgreen.com

DEUTSCH

DE



Dieses Symbol auf dem Produkt oder der Verpackung weist darauf hin, dass dieses Produkt gemäß bestehender örtlicher Gesetze und Vorschriften nicht über den normalen Hausmüll entsorgt werden sollte, sondern einer Wiederverwertung zuzuführen ist. Bringen Sie es bitte zu einer von Ihrer Kommunalbehörde entsprechend amtlich ausgewiesenen Sammelstelle, sobald das Produkt das Ende seiner Nutzungsdauer erreicht hat. Für die Annahme solcher Produkte erheben einige dieser Stellen keine Gebühren. Durch ein auf diese Weise durchgeführtes Recycling des Produkts und seiner Verpackung helfen Sie, die Umwelt zu schonen und die menschliche Gesundheit zu schützen.

D-Link und die Umwelt

D-Link ist sich den möglichen Auswirkungen seiner Geschäftstätigkeiten und seiner Produkte auf die Umwelt bewusst und fühlt sich verpflichtet, diese entsprechend zu mindern. Zu diesem Zweck entwickelt und stellt D-Link seine Produkte mit dem Ziel größtmöglicher Umweltfreundlichkeit her und verwendet wiederverwertbare, schadstoffarme Materialien bei Produktherstellung und Verpackung.

D-Link empfiehlt, Ihre Produkte von D-Link, wenn nicht in Gebrauch, immer auszuschalten oder vom Netz zu nehmen. Auf diese Weise helfen Sie, Energie zu sparen und CO2-Emissionen zu reduzieren.

Wenn Sie mehr über unsere umweltgerechten Produkte und Verpackungen wissen möchten, finden Sie entsprechende Informationen im Internet unter www.dlinkgreen.com.

FRANÇAIS

FR



Ce symbole apposé sur le produit ou son emballage signifie que, conformément aux lois et réglementations locales, ce produit ne doit pas être éliminé avec les déchets domestiques mais recyclé. Veuillez le rapporter à un point de collecte prévu à cet effet par les autorités locales; certains acceptent vos produits gratuitement. En recyclant le produit et son emballage de cette manière, vous aidez à préserver l'environnement et à protéger la santé de l'homme.

D-Link et l'environnement

Chez D-Link, nous sommes conscients de l'impact de nos opérations et produits sur l'environnement et nous engageons à le réduire. Pour limiter cet impact, D-Link conçoit et fabrique ses produits de manière aussi écologique que possible, en utilisant des matériaux recyclables et faiblement toxiques, tant dans ses produits que ses emballages.

D-Link recommande de toujours éteindre ou débrancher vos produits D-Link lorsque vous ne les utilisez pas. Vous réaliserez ainsi des économies d'énergie et réduirez vos émissions de CO2.

Pour en savoir plus sur les produits et emballages respectueux de l'environnement, veuillez consulter le www.dlinkgreen.com



Este símbolo en el producto o el embalaje significa que, de acuerdo con la legislación y la normativa local, este producto no se debe desechar en la basura doméstica sino que se debe reciclar. Llévelo a un punto de recogida designado por las autoridades locales una vez que ha llegado al fin de su vida útil; algunos de ellos aceptan recogerlos de forma gratuita. Al reciclar el producto y su embalaje de esta forma, contribuye a preservar el medio ambiente y a proteger la salud de los seres humanos.

D-Link y el medio ambiente

En D-Link, comprendemos y estamos comprometidos con la reducción del impacto que puedan tener nuestras actividades y nuestros productos en el medio ambiente. Para reducir este impacto, D-Link diseña y fabrica sus productos para que sean lo más ecológicos posible, utilizando materiales reciclables y de baja toxicidad tanto en los productos como en el embalaje. D-Link recomienda apagar o desenchufar los productos D-Link cuando no se estén utilizando. Al hacerlo, contribuirá a ahorrar energía y a reducir las emisiones de CO₂.

Para obtener más información acerca de nuestros productos y embalajes ecológicos, visite el sitio www.dlinkgreen.com



La presenza di questo simbolo sul prodotto o sulla confezione del prodotto indica che, in conformità alle leggi e alle normative locali, questo prodotto non deve essere smaltito nei rifiuti domestici, ma avviato al riciclo. Una volta terminato il ciclo di vita utile, portare il prodotto presso un punto di raccolta indicato dalle autorità locali. Alcuni questi punti di raccolta accettano gratuitamente i prodotti da riciclare. Scegliendo di riciclare il prodotto e il relativo imballaggio, si contribuirà a preservare l'ambiente e a salvaguardare la salute umana.

D-Link e l'ambiente

D-Link cerca da sempre di ridurre l'impatto ambientale dei propri stabilimenti e dei propri prodotti. Allo scopo di ridurre al minimo tale impatto, D-Link progetta e realizza i propri prodotti in modo che rispettino il più possibile l'ambiente, utilizzando materiali riciclabili a basso tasso di tossicità sia per i prodotti che per gli imballaggi.

D-Link raccomanda di spegnere sempre i prodotti D-Link o di scollegarne la spina quando non vengono utilizzati. In questo modo si contribuirà a risparmiare energia e a ridurre le emissioni di anidride carbonica.

Per ulteriori informazioni sui prodotti e sugli imballaggi D-Link a ridotto impatto ambientale, visitate il sito all'indirizzo www.dlinkgreen.com



Dit symbool op het product of de verpakking betekent dat dit product volgens de plaatselijke wetgeving niet mag worden weggegooid met het huishoudelijk afval, maar voor recycling moet worden ingeleverd. Zodra het product het einde van de levensduur heeft bereikt, dient u het naar een inzamelpunt te brengen dat hiertoe werd aangeduid door uw plaatselijke autoriteiten, sommige autoriteiten accepteren producten zonder dat u hiervoor dient te betalen. Door het product en de verpakking op deze manier te recyclen helpt u het milieu en de gezondheid van de mens te beschermen.

D-Link en het milieu

Bij D-Link spannen we ons in om de impact van onze handelingen en producten op het milieu te beperken. Om deze impact te beperken, ontwerpt en bouwt D-Link zijn producten zo milieuvriendelijk mogelijk, door het gebruik van recycleerbare producten met lage toxiciteit in product en verpakking.

D-Link raadt aan om steeds uw D-Link producten uit te schakelen of uit de stekker te halen wanneer u ze niet gebruikt. Door dit te doen bespaart u energie en beperkt u de CO₂-emissies.

Breng een bezoek aan www.dlinkgreen.com voor meer informatie over onze milieuverantwoorde producten en verpakkingen



Ten symbol umieszczony na produkcie lub opakowaniu oznacza, że zgodnie z miejscowym prawem i lokalnymi przepisami niniejszego produktu nie wolno wyrzucać jak odpady czy śmieci z gospodarstwa domowego, lecz należy go poddać procesowi recyklingu. Po zakończeniu użytkowania produktu, niektóre odpowiednio do tego celu podmioty przyjmują takie produkty nieodpłatnie, dlatego prosimy dostarczyć go do punktu zbiórki wskazanego przez lokalne władze. Poprzez proces recyklingu i dzięki takiemu postępowaniu z produktem oraz jego opakowaniem, pomogą Państwo chronić środowisko naturalne i dbać o ludzkie zdrowie.

D-Link i środowisko

W D-Link podchodzimy w sposób świadomy do ochrony otoczenia oraz jesteśmy zaangażowani w zmniejszanie wpływu naszych działań i produktów na środowisko naturalne. W celu zminimalizowania takiego wpływu firma D-Link konstruuje i wytwarza swoje produkty w taki sposób, aby były one jak najbardziej przyjazne środowisku, stosując do tych celów materiały nadające się do powtórnego wykorzystania, charakteryzujące się małą toksycznością zarówno w przypadku samych produktów jak i opakowań.

Firma D-Link zaleca, aby Państwo zawsze prawidłowo wyłączali z użytku swoje produkty D-Link, gdy nie są one wykorzystywane. Postępując w ten sposób pozwalają Państwo oszczędzać energię i zmniejszać emisje CO₂.

Aby dowiedzieć się więcej na temat produktów i opakowań mających wpływ na środowisko prosimy zapoznać się ze stroną internetową www.dlinkgreen.com.



Tento symbol na výrobku nebo jeho obalu znamená, že podle místně platných předpisů se výrobek nesmí vyhazovat do komunálního odpadu, ale odeslat k recyklaci. Až výrobek doslouží, odnese jej prosím na sběrné místo určené místními úřady k tomuto účelu. Některá sběrná místa přijímají výrobky zdarma. Recyklací výrobku i obalu pomáháte chránit životní prostředí i lidské zdraví.

D-Link a životní prostředí

Ve společnosti D-Link jsme si vědomi vlivu našich provozů a výrobků na životní prostředí a snažíme se o minimalizaci těchto vlivů. Proto své výrobky navrhujeme a vyrábíme tak, aby byly co nejekologičtější, a ve výrobcích i obalech používáme recyklovatelné a nízkotoxické materiály. Společnost D-Link doporučuje, abyste své výrobky značky D-Link vypnuli nebo vytáhli ze zásuvky vždy, když je nepoužíváte. Pomůžete tak šetřit energii a snížit emisie CO₂.

Více informací o našich ekologických výrobcích a obalech najdete na adrese www.dlinkgreen.com.



Ez a szimbólum a terméken vagy a csomagoláson azt jelenti, hogy a helyi törvényeknek és szabályoknak megfelelően ez a termék nem semmisíthető meg a háztartási hulladékkal együtt, hanem újrahasznosításra kell küldeni. Kérjük, hogy a termék élettartamának elteltét követően vigye azt a helyi hatóság által kijelölt gyűjtőhelyre. A termékek egyes helyeken ingyen elhelyezhetők. A termék és a csomagolás újrahasznosításával segíti védeni a környezetet és az emberek egészségét.

A D-Link és a környezet

A D-Linknél megértjük és elköteleztettek vagyunk a műveleteink és termékeink környezetre gyakorolt hatásainak csökkentésére. Az ezen hatás csökkentése érdekében a D-Link a lehető leginkább környezetbarát termékeket tervez és gyárt azért, hogy újrahasznosítható, alacsony károsanyag-tartalmú termékeket gyárt és csomagolásokat alkalmaz.

A D-Link azt javasolja, hogy mindig kapcsolja ki vagy húzza ki a D-Link termékeket a tápforrásból, ha nem használja azokat. Ezzel segít az energia megtakarításában és a szén-dioxid kibocsátásának csökkentésében.

Környezetbarát termékeinkről és csomagolásainkról további információkat a www.dlinkgreen.com weboldalon tudhat meg.



Dette symbolet på produktet eller forpakningen betyr at dette produktet ifølge lokale lover og forskrifter ikke skal kastes sammen med husholdningsavfall, men leveres inn til gjenvinning. Vennligst ta det til et innsamlingssted anvist av lokale myndigheter når det er kommet til slutten av levetiden. Noen steder aksepteres produkter uten avgift. Ved på denne måten å gjenvinne produktet og forpakningen hjelper du å verne miljøet og beskytte folks helse.

D-Link og miljøet

Hos D-Link forstår vi oss på og er forpliktet til å minske innvirkningen som vår drift og våre produkter kan ha på miljøet. For å minimalisere denne innvirkningen designer og lager D-Link produkter som er så miljøvennlig som mulig, ved å bruke resirkulerbare, lav-toksiske materialer både i produktene og forpakningen.

D-Link anbefaler at du alltid slår av eller frakobler D-Link-produkter når de ikke er i bruk. Ved å gjøre dette hjelper du å spare energi og å redusere CO2-utslipp.

For mer informasjon angående våre miljøansvarlige produkter og forpakninger kan du gå til www.dlinkgreen.com



Dette symbol på produktet eller emballagen betyder, at dette produkt til lokale love og regler ikke må bortskaffes som husholdningsaffald, mens skal sendes til genbrug. Indlever produktet til et indsamlingssted som angivet af de lokale myndigheder, når det er nået til slutningen af dets levetid. I nogle tilfælde vil produktet blive modtaget gratis. Ved at indlevere produktet og dets emballage til genbrug på denne måde bidrager du til at beskytte miljøet og den menneskelige sundhed.

D-Link og miljøet

Hos D-Link forstår vi og bestræber os på at reducere enhver indvirkning, som vores aktiviteter og produkter kan have på miljøet. For at minimere denne indvirkning designer og producerer D-Link sine produkter, så de er så miljøvenlige som muligt, ved at bruge genanvendelige materialer med lavt giftighedsniveau i både produkter og emballage.

D-Link anbefaler, at du altid slukker eller frakobler dine D-Link-produkter, når de ikke er i brug. Ved at gøre det bidrager du til at spare energi og reducere CO2-udledninger.

Du kan finde flere oplysninger om vores miljømæssigt ansvarlige produkter og emballage på www.dlinkgreen.com



Tämä symboli tuotteen pakkauksessa tarkoittaa, että paikallisten lakien ja säännösten mukaisesti tätä tuotetta ei pidä hävittää yleisen kotitalousjätteen seassa vaan se tulee toimittaa kierrätettäväksi. Kun tuote on elinkaarensa päässä, toimita se lähimpään viranomaisten hyväksymään kierrätyspisteeseen. Kierrättämällä käytetyn tuotteen ja sen pakkauksen autat tukemaan sekä ympäristön että ihmisten terveyttä ja hyvinvointia.

D-Link ja ympäristö

D-Link ymmärtää ympäristönsuojelun tärkeyden ja on sitoutunut vähentämään tuotteistaan ja niiden valmistuksesta ympäristölle mahdollisesti aiheutuvia haittavaikutuksia. Nämä negatiiviset vaikutukset minimoidakseen D-Link suunnittelee ja valmistaa tuotteensa mahdollisimman ympäristöystävällisiksi käyttämällä kierrätettäviä, alhaisia pitoisuuksia haitallisia aineita sisältäviä materiaaleja sekä tuotteissaan että niiden pakkauksissa.

Suosittellemme, että irrotat D-Link-tuotteesi virtalähteestä tai sammutat ne aina, kun ne eivät ole käytössä. Toimimalla näin autat säästämään energiaa ja vähentämään hiilidioksidipäästöjä.

Lue lisää ympäristöystävällisistä D-Link-tuotteista ja pakkauksistamme osoitteesta www.dlinkgreen.com



Den här symbolen på produkten eller förpackningen betyder att produkten enligt lokala lagar och föreskrifter inte skall kastas i hushållssoporna utan i stället återvinnas. Ta den vid slutet av dess livslängd till en av din lokala myndighet utsedd uppsamlingsplats, vissa accepterar produkter utan kostnad. Genom att på detta sätt återvinna produkten och förpackningen hjälper du till att bevara miljön och skydda människors hälsa.

D-Link och miljön

På D-Link förstår vi och är fast beslutna att minska den påverkan våra verksamheter och produkter kan ha på miljön. För att minska denna påverkan utformar och bygger D-Link sina produkter för att de ska vara så miljövänliga som möjligt, genom att använda återvinningsbara material med låg gifthalt i både produkter och förpackningar.

D-Link rekommenderar att du alltid stänger av eller kopplar ur dina D-Link produkter när du inte använder dem. Genom att göra detta hjälper du till att spara energi och minska utsläpp av koldioxid.

För mer information om våra miljövänliga produkter och förpackningar www.dlinkgreen.com



Este símbolo no produto ou embalagem significa que, de acordo com as leis e regulamentações locais, este produto não deverá ser eliminado juntamente com o lixo doméstico mas enviado para a reciclagem. Transporte-o para um ponto de recolha designado pelas suas autoridades locais quando este tiver atingido o fim da sua vida útil, alguns destes pontos aceitam produtos gratuitamente. Ao reciclar o produto e respectiva embalagem desta forma, ajuda a preservar o ambiente e protege a saúde humana.

A D-Link e o ambiente

Na D-Link compreendemos e comprometemo-nos com a redução do impacto que as nossas operações e produtos possam ter no ambiente. Para minimizar este impacto a D-Link concebe e constrói os seus produtos para que estes sejam o mais inofensivos para o ambiente possível, utilizando materiais recicláveis e não tóxicos tanto nos produtos como nas embalagens,

A D-Link recomenda que desligue os seus produtos D-Link quando estes não se encontrarem em utilização. Com esta acção ajudará a poupar energia e reduzir as emissões de CO2.

Para saber mais sobre os nossos produtos e embalagens responsáveis a nível ambiental visite www.dlinkgreen.com



Этот символ на продукте или упаковке означает, что в соответствии с нормами местного законодательства данный продукт в случае выхода из строя подлежит утилизации, и от него нельзя избавиться как от обычного бытового мусора. Отнесите устройство в ближайшую службу утилизации и переработки. При утилизации продукта и его упаковки таким образом обеспечивается защита окружающей среды и не наносится вред здоровью людей.

Забота D-Link об окружающей среде

Компания D-Link стремится максимально сократить негативное влияние своей деятельности на окружающую среду. Поэтому D-Link разрабатывает максимально экологичные продукты, используя легкоперерабатываемые и низкотоксичные материалы как для изготовления самих продуктов, так и их упаковки.

Кроме того, D-Link рекомендует отключать устройства, если они не используются. Это обеспечит энергосбережение и сократит выброс в атмосферу углекислого газа.

Более подробная информация об экологичной продукции D-Link доступна на сайте www.dlinkgreen.com

D-LINK GPL CODE STATEMENT

This D-Link product includes software code developed by third parties, including software code subject to the GNU General Public License ("GPL") or GNU Lesser General Public License ("LGPL"). As applicable, the terms of the GPL and LGPL, and information on obtaining access to the GPL code and LGPL code used in this product, are available to you at:

<http://tsd.dlink.com.tw/GPL.asp>

The GPL code and LGPL code used in this product are distributed WITHOUT ANY WARRANTY and is subject to the copyrights of one or more authors. For details, see the GPL code and the LGPL code for this product and the terms of the GPL and LGPL.

WRITTEN OFFER FOR GPL AND LGPL SOURCE CODE

Where such specific license terms entitle you to the source code of such software, D-Link will provide upon written request via email and/or traditional paper mail the applicable GPL and LGPL source code files via CD-ROM for a nominal cost to cover shipping and media charges as allowed under the GPL and LGPL.

Technical Support: For product support, please visit <http://support.dlink.com> for further assistance.

General Public License ("GPL") Inquiries: Please direct all GPL inquiries to the following email/address. Note that technical support inquiries will not be supported at the below address.

Email:

GPLCODE@DLink.com

Snail Mail:

Attn: GPLSOURCE REQUEST

D-Link Systems, Inc.

17595 Mt. Hermann Street

Fountain Valley, CA 92708

GNU GENERAL PUBLIC LICENSE

Version 2, June 1991

Copyright (C) 1989, 1991 Free Software Foundation, Inc.
51 Franklin Street, Fifth Floor, Boston, MA 02110-1301, USA

Everyone is permitted to copy and distribute verbatim copies of this license document, but changing it is not allowed.

PREAMBLE

The licenses for most software are designed to take away your freedom to share and change it. By contrast, the GNU General Public License is intended to guarantee your freedom to share and change free software—to make sure the software is free for all its users. This General Public License applies to most of the Free Software Foundation's software and to any other program whose authors commit to using it. (Some other Free Software Foundation software is covered by the GNU Library General Public License instead.) You can apply it to your programs, too.

When we speak of free software, we are referring to freedom, not price. Our General Public Licenses are designed to make sure that you have the freedom to distribute copies of free software (and charge for this service if you wish), that you receive source code or can get it if you want it, that you can change the software or use pieces of it in new free programs; and that you know you can do these things.

To protect your rights, we need to make restrictions that forbid anyone to deny you these rights or to ask you to surrender the rights. These restrictions translate to certain responsibilities for you if you distribute copies of the software, or if you modify it. For example, if you distribute copies of such a program, whether gratis or for a fee, you must give the recipients all the rights that you have. You must make sure that they, too, receive or can get the source code. And you must show them these terms so they know their rights.

We protect your rights with two steps: (1) copyright the software, and (2) offer you this license which gives you legal permission to copy, distribute and/or modify the software.

Also, for each author's protection and ours, we want to make certain that everyone understands that there is no warranty for this free software. If the software is modified by someone else and passed on, we want its recipients to know that what they have is not the original, so that any problems introduced by others will not reflect on the original authors' reputations.

Finally, any free program is threatened constantly by software patents. We wish to avoid the danger that redistributors of a free program will individually obtain patent licenses, in effect making the program proprietary. To prevent this, we have made it clear that any patent must be licensed for everyone's free use or not licensed at all.

The precise terms and conditions for copying, distribution and modification follow.

GNU GENERAL PUBLIC LICENSE

TERMS AND CONDITIONS FOR COPYING, DISTRIBUTION AND MODIFICATION

0. This License applies to any program or other work which contains a notice placed by the copyright holder saying it may be distributed under the terms of this General Public License. The "Program", below, refers to any such program or work, and a "work based on the Program" means either the Program or any derivative work under copyright law: that is to say, a work containing the Program or a portion of it, either verbatim or with modifications and/or translated into another language. (Hereinafter, translation is included without limitation in the term "modification".) Each licensee is addressed as "you".

Activities other than copying, distribution and modification are not covered by this License; they are outside its scope. The act of running the Program is not restricted, and the output from the Program is covered only if its contents constitute a work based on the Program (independent of having been made by running the Program). Whether that is true depends on what the Program does.

1. You may copy and distribute verbatim copies of the Program's source code as you receive it, in any medium, provided that you conspicuously and appropriately publish on each copy an appropriate copyright notice and disclaimer of warranty; keep intact all the notices that refer to this License and to the absence of any warranty; and give any other recipients of the Program a copy of this License along with the Program.

You may charge a fee for the physical act of transferring a copy, and you may at your option offer warranty protection in exchange for a fee.

2. You may modify your copy or copies of the Program or any portion of it, thus forming a work based on the Program, and copy and distribute such modifications or work under the terms of Section 1 above, provided that you also meet all of these conditions:

- You must cause the modified files to carry prominent notices stating that you changed the files and the date of any change.
- You must cause any work that you distribute or publish, that in whole or in part contains or is derived from the Program or any part thereof, to be licensed as a whole at no charge to all third parties under the terms of this License.
- If the modified program normally reads commands interactively when run, you must cause it, when started running for such interactive use in the most ordinary way, to print or display an announcement including an appropriate copyright notice and a notice that there is no warranty (or else, saying that you provide a warranty) and that users may redistribute the program under these conditions, and telling the user how to view a copy of this License. (Exception: if the Program itself is interactive but does not normally print such an announcement, your work based on the Program is not required to print an announcement.)

These requirements apply to the modified work as a whole. If identifiable sections of that work are not derived from the Program, and can be reasonably considered independent and separate works in themselves, then this License, and its terms, do not apply to those sections when you distribute them as separate works. But when you distribute the same sections as part of a whole which is a work based on the Program, the distribution of the whole must be on the terms of this License, whose permissions for other licensees extend to the entire whole, and thus to each and every part regardless of who wrote it.

Thus, it is not the intent of this section to claim rights or contest your rights to work written entirely by you; rather, the intent is to exercise the right to control the distribution of derivative or collective works based on the Program.

In addition, mere aggregation of another work not based on the Program with the Program (or with a work based on the Program) on a volume of a storage or distribution medium does not bring the other work under the scope of this License.

3. You may copy and distribute the Program (or a work based on it, under Section 2) in object code or executable form under the terms of Sections 1 and 2 above provided that you also do one of the following:

- a) Accompany it with the complete corresponding machine-readable source code, which must be distributed under the terms of Sections 1 and 2 above on a medium customarily used for software interchange; or,
- b) Accompany it with a written offer, valid for at least three years, to give any third party, for a charge no more than your cost of physically performing source distribution, a complete machine-readable copy of the corresponding source code, to be distributed under the terms of Sections 1 and 2 above on a medium customarily used for software interchange; or,
- c) Accompany it with the information you received as to the offer to distribute corresponding source code. (This alternative is allowed only for noncommercial distribution and only if you received the program in object code or executable form with such an offer, in accord with Subsection b above.)

The source code for a work means the preferred form of the work for making modifications to it. For an executable work, complete source code means all the source code for all modules it contains, plus any associated interface definition files, plus the scripts used to control compilation and installation of the executable. However, as a special exception, the source code distributed need not include anything that is normally distributed (in either source or binary form) with the major components (compiler, kernel, and so on) of the operating system on which the executable runs, unless that component itself accompanies the executable.

If distribution of executable or object code is made by offering access to copy from a designated place, then offering equivalent access to copy the source code from the same place counts as distribution of the source code, even though third parties are not compelled to copy the source along with the object code.

4. You may not copy, modify, sublicense, or distribute the Program except as expressly provided under this License. Any attempt otherwise to copy, modify, sublicense or distribute the Program is void, and will automatically terminate your rights under this License. However, parties who have received copies, or rights, from you under this License will not have their licenses terminated so long as such parties remain in full compliance.

5. You are not required to accept this License, since you have not signed it. However, nothing else grants you permission to modify or distribute the Program or its derivative works. These actions are prohibited by law if you do not accept this License. Therefore, by modifying or distributing the Program (or any work based on the Program), you indicate your acceptance of this License to do so, and all its terms and conditions for copying, distributing or modifying the Program or works based on it.

6. Each time you redistribute the Program (or any work based on the Program), the recipient automatically receives a license from the original licensor to copy, distribute or modify the Program subject to these terms and conditions. You may not impose any further restrictions on the recipients' exercise of the rights granted herein. You are not responsible for enforcing compliance by third parties to this License.

7. If, as a consequence of a court judgment or allegation of patent infringement or for any other reason (not limited to patent issues), conditions are imposed on you (whether by court order, agreement or otherwise) that contradict the conditions of this License, they do not excuse you from the conditions of this License. If you cannot distribute so as to satisfy simultaneously your obligations under this License and any other pertinent obligations, then as a consequence you may not distribute the Program at all. For example, if a patent license would not permit royalty-free redistribution of the Program by all those who receive copies directly or indirectly through you, then the only way you could satisfy both it and this License would be to refrain entirely from distribution of the Program.

If any portion of this section is held invalid or unenforceable under any particular circumstance, the balance of the section is intended to apply and the section as a whole is intended to apply in other circumstances.

It is not the purpose of this section to induce you to infringe any patents or other property right claims or to contest validity of any such claims; this section has the sole purpose of protecting the integrity of the free software distribution system, which is implemented by public license practices. Many people have made generous contributions to the wide range of software distributed through that system in reliance on consistent application of that system; it is up to the author/donor to decide if he or she is willing to distribute software through any other system and a licensee cannot impose that choice.

This section is intended to make thoroughly clear what is believed to be a consequence of the rest of this License.

8. If the distribution and/or use of the Program is restricted in certain countries either by patents or by copyrighted interfaces, the original copyright holder who places the Program under this License may add an explicit geographical distribution limitation excluding those countries, so that distribution is permitted only in or among countries not thus excluded. In such case, this License incorporates the limitation as if written in the body of this License.

9. The Free Software Foundation may publish revised and/or new versions of the General Public License from time to time. Such new versions will be similar in spirit to the present version, but may differ in detail to address new problems or concerns. Each version is given a distinguishing version number. If the Program specifies a version number of this License which applies to it and "any later version", you have the option of following the terms and conditions either of that version or of any later version published by the Free Software Foundation. If the Program does not specify a version number of this License, you may choose any version ever published by the Free Software Foundation.

10. If you wish to incorporate parts of the Program into other free programs whose distribution conditions are different, write to the author to ask for permission. For software which is copyrighted by the Free Software Foundation, write to the Free Software Foundation; we sometimes make exceptions for this. Our decision will be guided by the two goals of preserving the free status of all derivatives of our free software and of promoting the sharing and reuse of software generally.

NO WARRANTY

11. BECAUSE THE PROGRAM IS LICENSED FREE OF CHARGE, THERE IS NO WARRANTY FOR THE PROGRAM, TO THE EXTENT PERMITTED BY APPLICABLE LAW. EXCEPT WHEN OTHERWISE STATED IN WRITING THE COPYRIGHT HOLDERS AND/OR OTHER PARTIES PROVIDE THE PROGRAM "AS IS" WITHOUT WARRANTY OF ANY KIND, EITHER EXPRESSED OR IMPLIED, INCLUDING, BUT NOT LIMITED TO, THE IMPLIED WARRANTIES OF MERCHANTABILITY AND FITNESS FOR A PARTICULAR PURPOSE. THE ENTIRE RISK AS TO THE QUALITY AND PERFORMANCE OF THE PROGRAM IS WITH YOU. SHOULD THE PROGRAM PROVE DEFECTIVE, YOU ASSUME THE COST OF ALL NECESSARY SERVICING, REPAIR OR CORRECTION.

12. IN NO EVENT UNLESS REQUIRED BY APPLICABLE LAW OR AGREED TO IN WRITING WILL ANY COPYRIGHT HOLDER, OR ANY OTHER PARTY WHO MAY MODIFY AND/OR REDISTRIBUTE THE PROGRAM AS PERMITTED ABOVE, BE LIABLE TO YOU FOR DAMAGES, INCLUDING ANY GENERAL, SPECIAL, INCIDENTAL OR CONSEQUENTIAL DAMAGES ARISING OUT OF THE USE OR INABILITY TO USE THE PROGRAM (INCLUDING BUT NOT LIMITED TO LOSS OF DATA OR DATA BEING RENDERED INACCURATE OR LOSSES SUSTAINED BY YOU OR THIRD PARTIES OR A FAILURE OF THE PROGRAM TO OPERATE WITH ANY OTHER PROGRAMS), EVEN IF SUCH HOLDER OR OTHER PARTY HAS BEEN ADVISED OF THE POSSIBILITY OF SUCH DAMAGES.

END OF TERMS AND CONDITIONS

HOW TO APPLY THESE TERMS TO YOUR NEW PROGRAMS

If you develop a new program, and you want it to be of the greatest possible use to the public, the best way to achieve this is to make it free software which everyone can redistribute and change under these terms.

To do so, attach the following notices to the program. It is safest to attach them to the start of each source file to most effectively convey the exclusion of warranty; and each file should have at least the "copyright" line and a pointer to where the full notice is found.

<one line to give the program's name and a brief idea of what it does.>

Copyright (C) <year> <name of author>

This program is free software; you can redistribute it and/or modify it under the terms of the GNU General Public License as published by the Free Software Foundation; either version 2 of the License, or (at your option) any later version.

This program is distributed in the hope that it will be useful, but WITHOUT ANY WARRANTY; without even the implied warranty of MERCHANTABILITY or FITNESS FOR A PARTICULAR PURPOSE. See the GNU General Public License for more details.

You should have received a copy of the GNU General Public License along with this program; if not, write to the Free Software Foundation, Inc., 51 Franklin Street, Fifth Floor, Boston, MA 02110-1301, USA.

Also add information on how to contact you by electronic and paper mail.

If the program is interactive, make it output a short notice like this when it starts in an interactive mode:

Gnomovision version 69, Copyright (C) year name of author Gnomovision comes with ABSOLUTELY NO WARRANTY; for details type `show w`.

This is free software, and you are welcome to redistribute it under certain conditions; type `show c` for details.

The hypothetical commands `show w` and `show c` should show the appropriate parts of the General Public License. Of course, the commands you use may be called something other than `show w` and `show c`; they could even be mouse-clicks or menu items--whatever suits your program.

You should also get your employer (if you work as a programmer) or your school, if any, to sign a "copyright disclaimer" for the program, if necessary. Here is a sample; alter the names:

Yoyodyne, Inc., hereby disclaims all copyright interest in the program `Gnomovision' (which makes passes at compilers) written by James Hacker.

<signature of Ty Coon>, 1 April 1989
Ty Coon, President of Vice

This General Public License does not permit incorporating your program into proprietary programs. If your program is a subroutine library, you may consider it more useful to permit linking proprietary applications with the library. If this is what you want to do, use the GNU Library General Public License instead of this License.

NOTES

D-Link[®]



Ver. 1.00(WW)_130x183
2015/05/12
RMN0101611