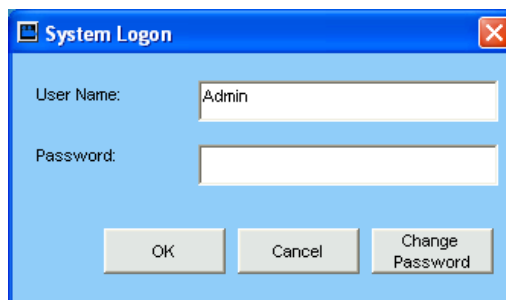
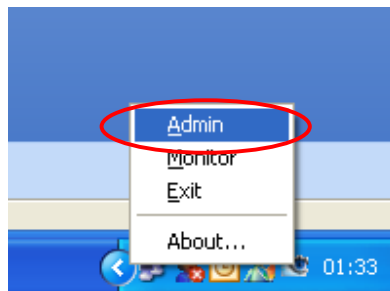
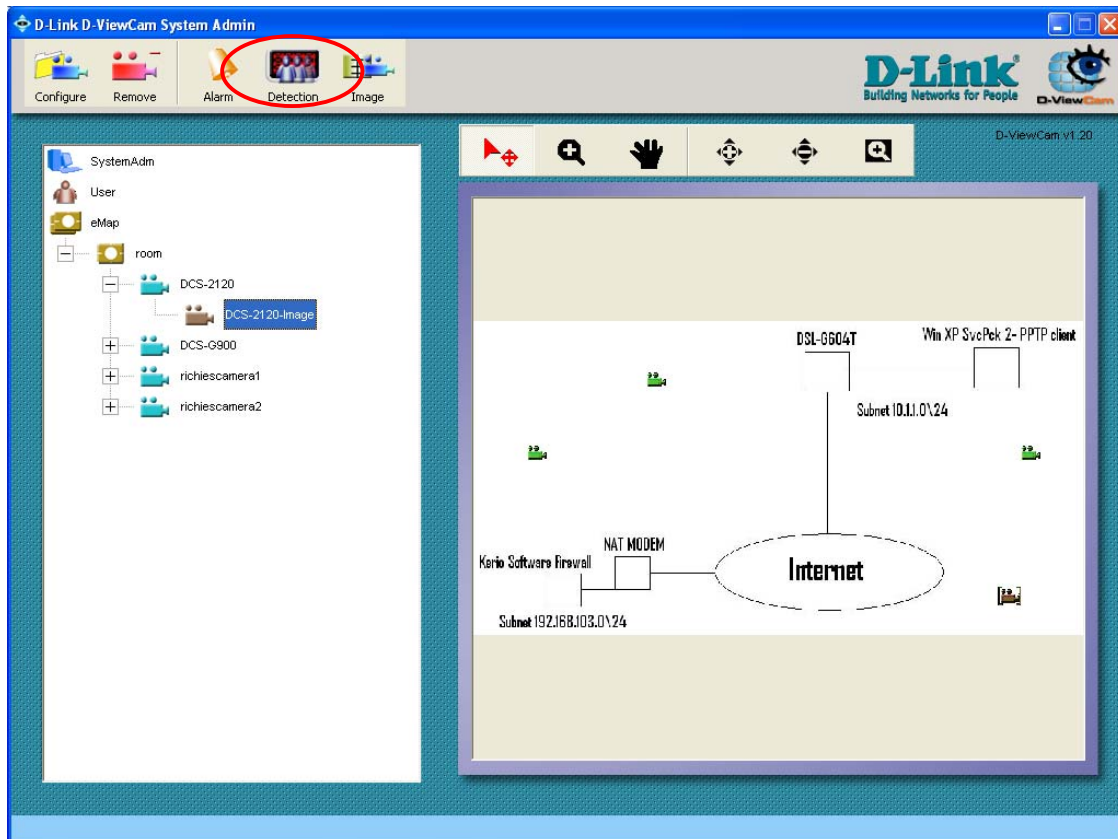


D-ViewCam 1.20 Setting Up Motion Detection

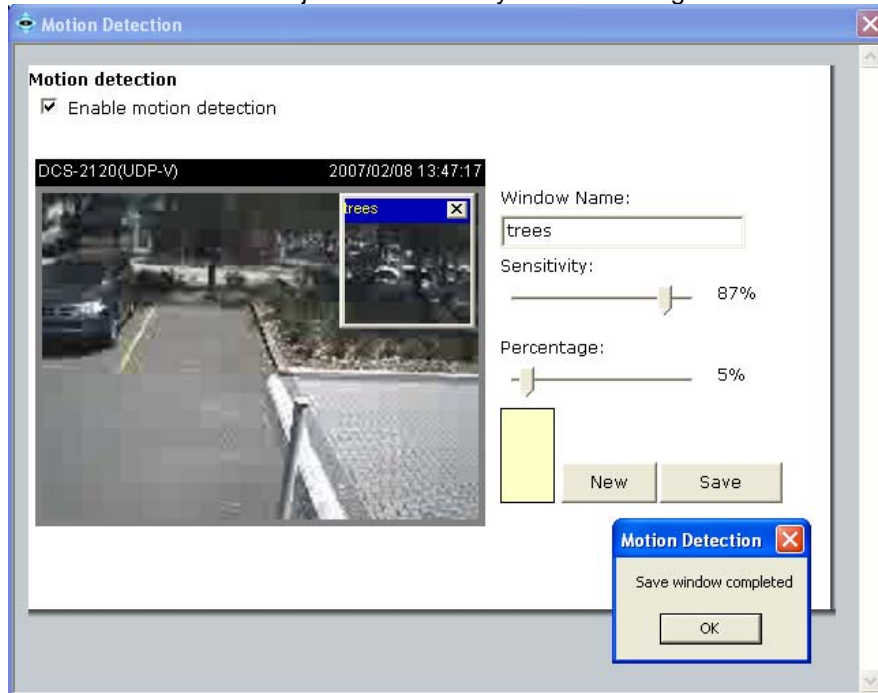
Step 1. Open the D-ViewCam Admin program and log into the D-ViewCam application.



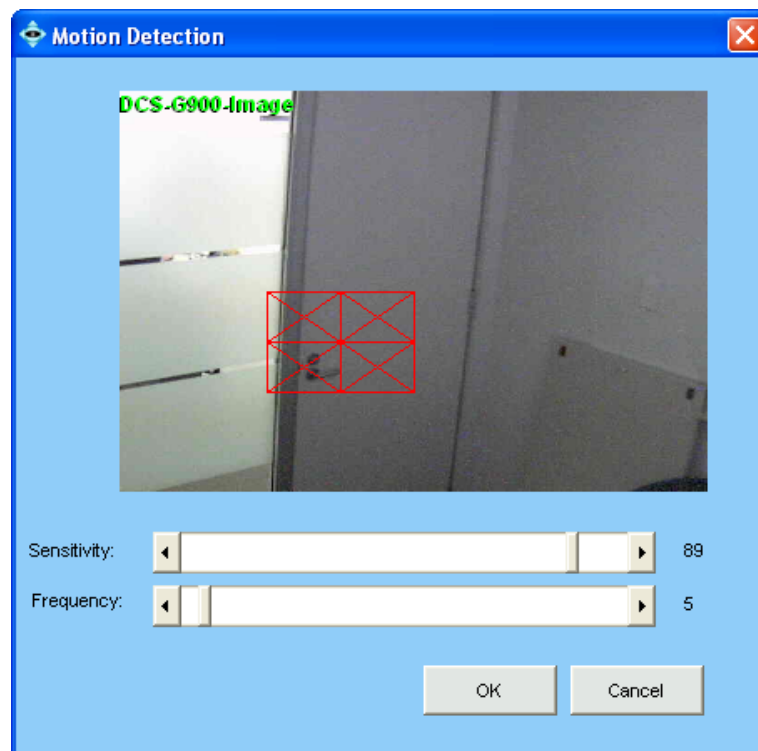
Step 2. Select the appropriate room and camera image – select **"Detection"** from the top Menu.



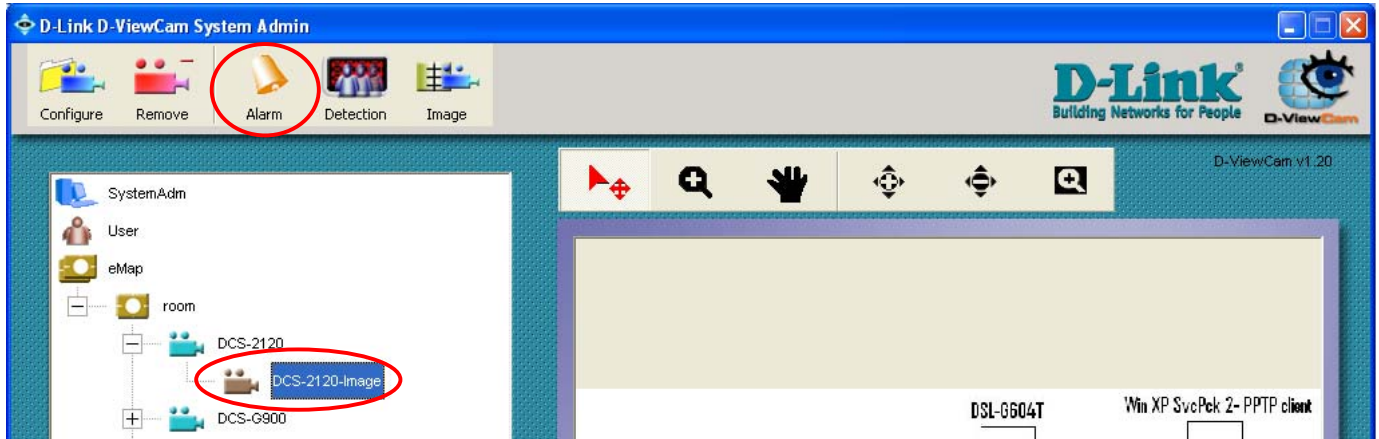
Step 3. If the camera in question has inbuilt support for Motion Detection – the configuration will look the same as on the camera's inbuilt interface (the example below shows the DCS-2120 camera). To create an area on the image which will be monitored for motion, click on **New** and move and resize the monitoring window. Type in a name for the window and adjust the Sensitivity and Percentage. Click on **Save**.



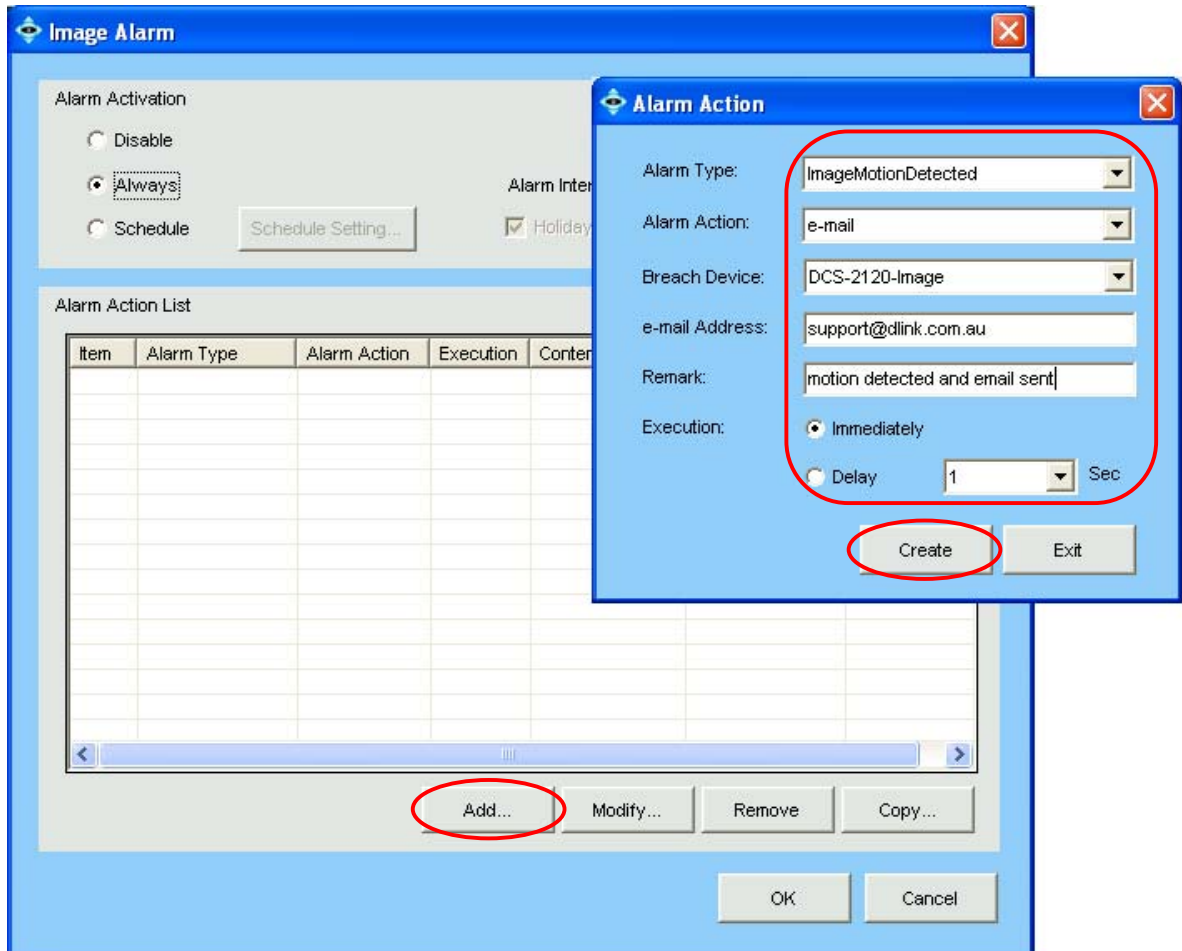
Motion Detection is also supported by D-ViewCam on cameras that do not include motion detection (the example below shows the DCS-G900 camera). To create an area on the image which will be monitored for motion, click on the image in the required area. Adjust the Sensitivity and Frequency. Click on **OK**.



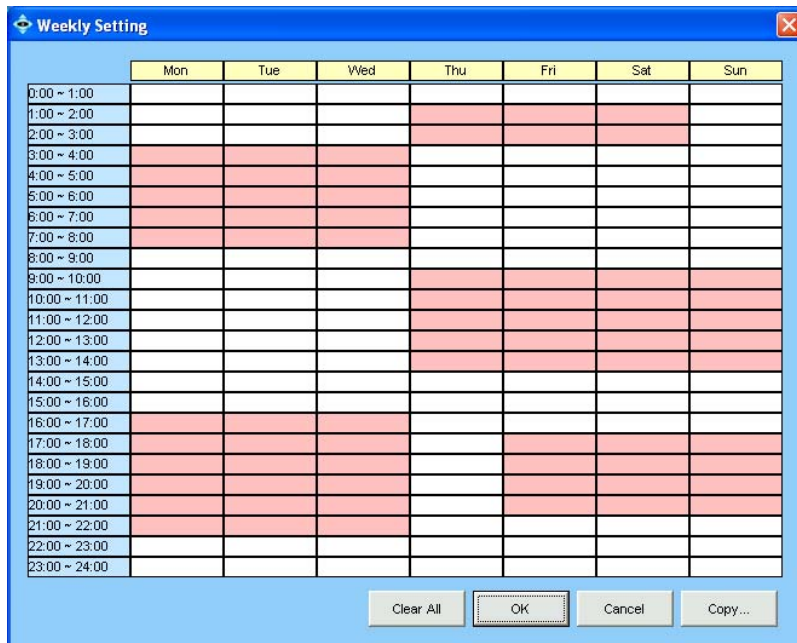
Step 4. Configure the correct actions that will result from the motion detection being triggered. Select the camera you wish to configure an action for and then click on **Alarm** from the top menu.



Step 5. Click on **Add...** to add an Alarm. Select the **Alarm Type** – “Image Motion Detected”. Set the preferred **Alarm Action** – record, send still image, or send email. Select the camera you want to monitor. Specify the e-mail address and the remark for the logs. Click **Create**.

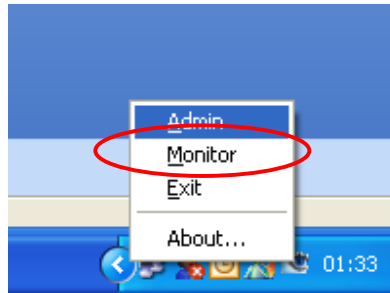


Step 6. You can set your camera alarms to be triggered at all times or only during a defined schedule. To enable a schedule select the “**Schedule**” option and click on “**Schedule Settings...**”. Click and drag to fill in the active periods of the schedule. Click on **OK**.

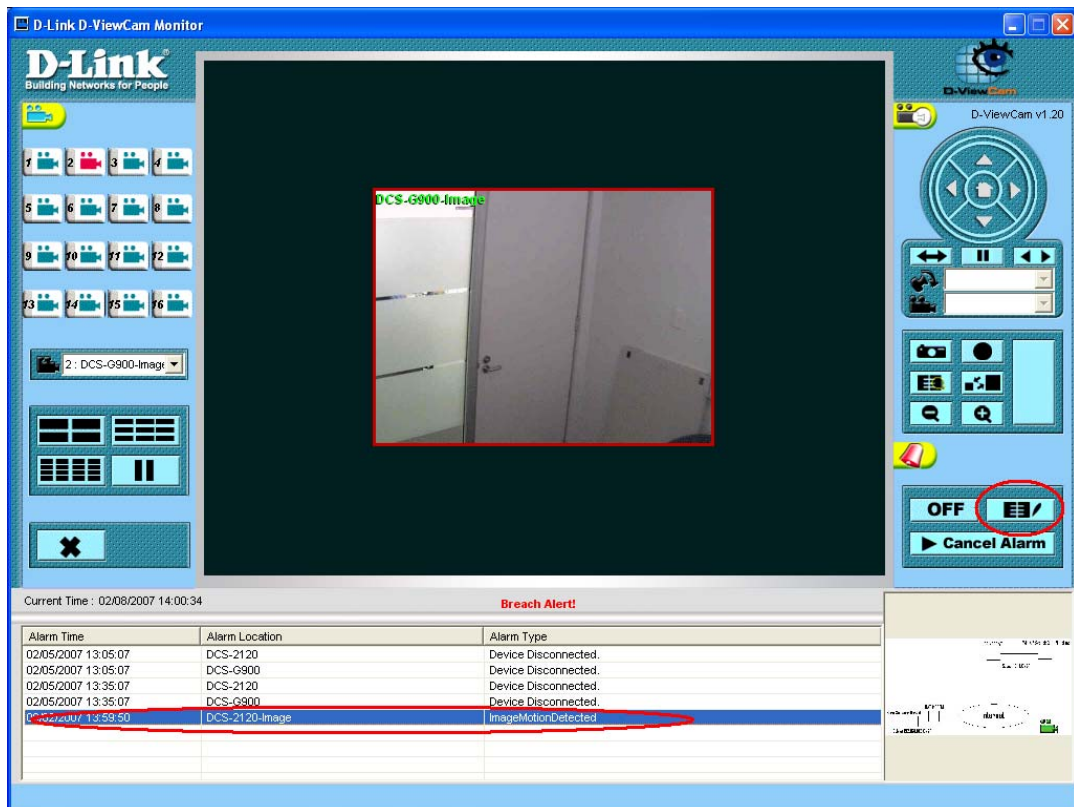


Reviewing the alarms

Open the Monitor software.



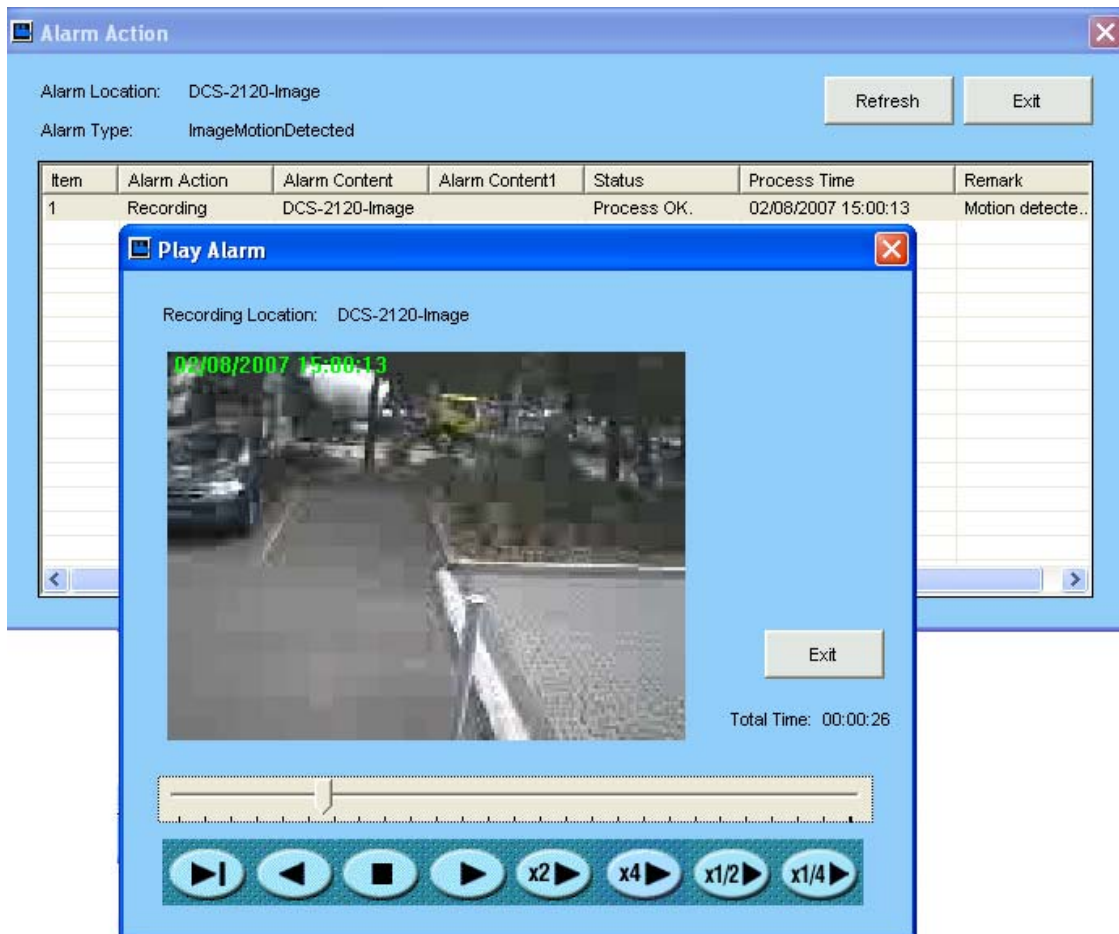
Any time the software detects the preset amount of motion or more – an Alarm will be triggered. The next time the Monitor software is opened – the alarm will be displayed.



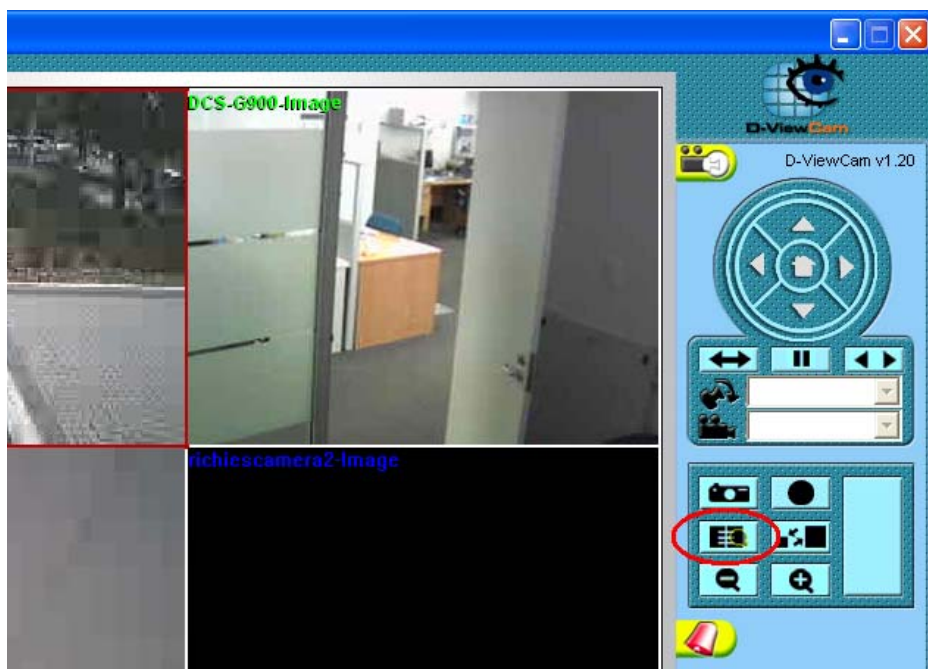
The screenshot shows the D-Link D-ViewCam Monitor software interface. The main window displays a video feed of a door labeled 'DCS-G900-Image'. The interface includes a left sidebar with camera selection buttons (1-16), a central video feed, and a right sidebar with control buttons (directional arrows, zoom, pan, etc.). A red circle highlights the 'OFF' button in the bottom right corner. Below the video feed, a table displays an alarm log with the following data:

Alarm Time	Alarm Location	Alarm Type
02/05/2007 13:05:07	DCS-2120	Device Disconnected.
02/05/2007 13:05:07	DCS-G900	Device Disconnected.
02/05/2007 13:35:07	DCS-2120	Device Disconnected.
02/05/2007 13:35:07	DCS-G900	Device Disconnected.
02/05/2007 13:59:50	DCS-2120-Image	ImageMotionDetected

Double-click on the alarms and then double-click on the recording entry and review the action that triggered that alarm



You can export the captured motion to an AVI video file so it can be viewed on any computer using standard media player. Select the **Playback** button from the main menu



Under **Alarm Location** select the camera you are recording from, select the time frame and click on **Query**. Find the event time from the list of alarms and double-click to view the video. Click the **Record AVI** button to save the video fragment in AVI format.

