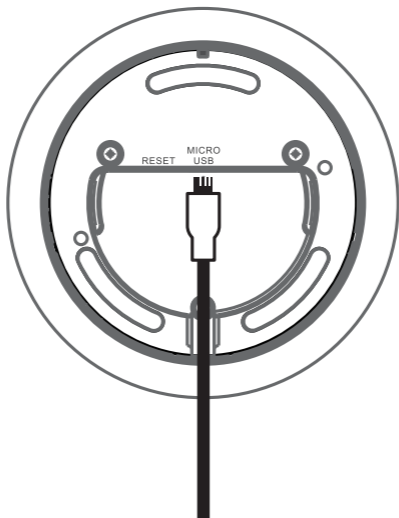


1



2



3



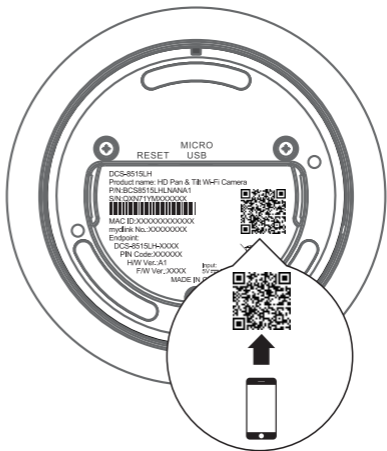
4



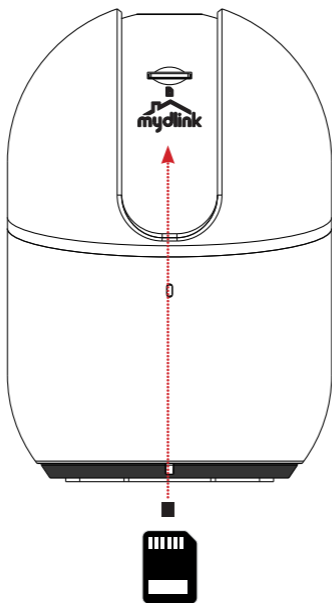
OR



5



6



Where a microSD card can be inserted in order to save video recordings.

Note: Please use the mydlink app to tilt the camera up to reveal the slot.



Minimum Requirements

To install this product, you will need:

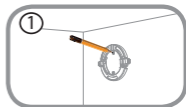
- An 802.11 g/n wireless router
- An Internet connection
- The latest version of the mydlink app from the App Store or Google Play. Please refer to the app's store page to check whether your device is compatible.
- An e-mail account (required to register for mydlink service)



Camera Mounting Instructions

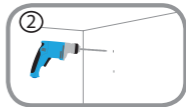
Step 1:

Place the mount at the desired location, assuring that location of the power cord thread is also at the desired location. Use a pencil to mark the holes.



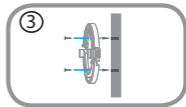
Step 2:

Using a 6 mm drill bit, drill two 25 mm deep holes over the pencil marks. For a plaster, drywall, or concrete wall, insert the plastic anchors to support the screws first.



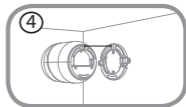
Step 3:

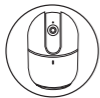
Place the mount over the holes that are in the wall. Make sure to align the mount holes with the holes in the wall. Use the supplied screws to attach the mount to the surface of the wall.



Step 4:

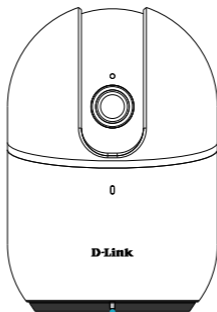
Align the bottom of the camera to the threads on the mount. Assure that the camera is securely snapped into place.











Camera LED Information

DCS-8515LH



Status LED

-  System booting / Factory resetting
-  Firmware updating
-  Bluetooth enabled
-  BLE pairing / Ready for setup
-  Wireless connected
-  Data is being transferred



Support

Having trouble installing your new product? D-Link's website contains the latest user documentation and software updates for D-Link products. Australian and New Zealand customers can contact D-Link Technical Support through our website.

Australia:

Tel: 1300-700-100

24/7 Technical Support

Web: <http://www.dlink.com.au>

E-mail: support@dlink.com.au

New Zealand:

Tel: 0800-900-900

24/7 Technical Support

Web: <http://www.dlink.co.nz>

E-mail: support@dlink.co.nz

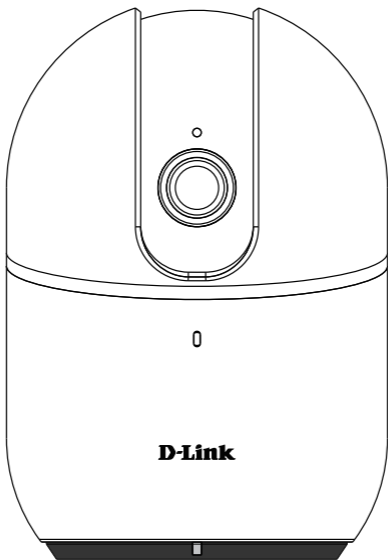
Version 1.00 (AU)_90x130

May 08rd, 2019

©2019 All rights reserved. D-Link and the D-Link logo are registered trademarks of D-Link Corporation or its subsidiaries. Product specification, size and shape are subject to change without notice, and actual product appearance may differ from that depicted on the package. Visit dlink.ca for more details.

HD Pan & Tilt Wi-Fi Camera

Quick Start Guide



DCS-8515LH

