



How to install the DCS-942L



This document will detail how to install the DCS-942L into your existing network.

Ensuring the firmware remains up to date can assist with functionality / improved performances as well as adding additional features.

1. Connect the included Ethernet cable to the network cable connector located on the top panel at the rear of the DCS-942L and attach the other end to your network, the network will usually be a LAN port on your Router.

Ensure to attach the external power supply to the DCS-942L as well.



External power supply.

Ethernet cable which connects to your networks LAN port.

2. Insert the Installation CD-ROM into your computer's optical drive and start the autorun program. You can also browse the contents of your computer's optical drive and double click on the "autorun.exe" file as well.

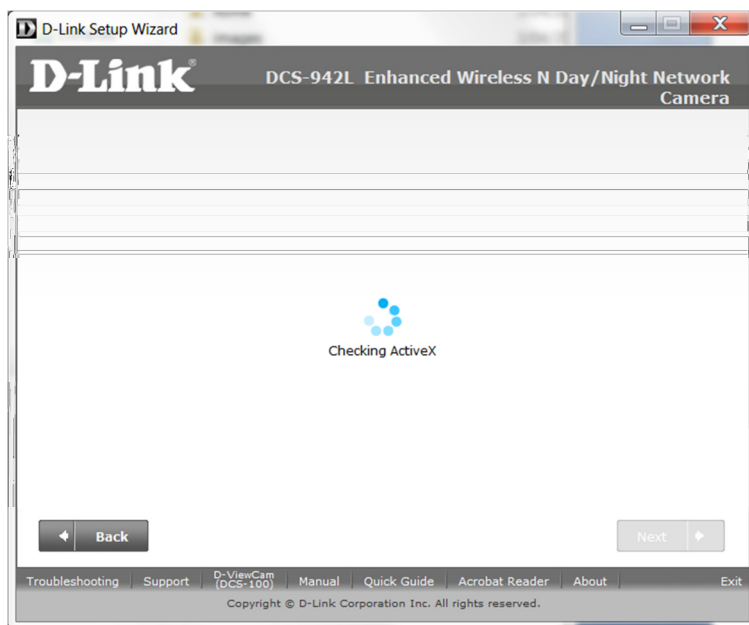
If you have downloaded the Setup Utility from the D-Link Support Knowledge Base, and have extracted the archive (*.zip file), you can also double click on the "autorun.exe" file as well.

NOTE: For any prompts that require permission to run, it is best to 'Allow', 'OK' and or 'Accept' the files to run and or be installed.

3. Click the Start button to begin the setup:



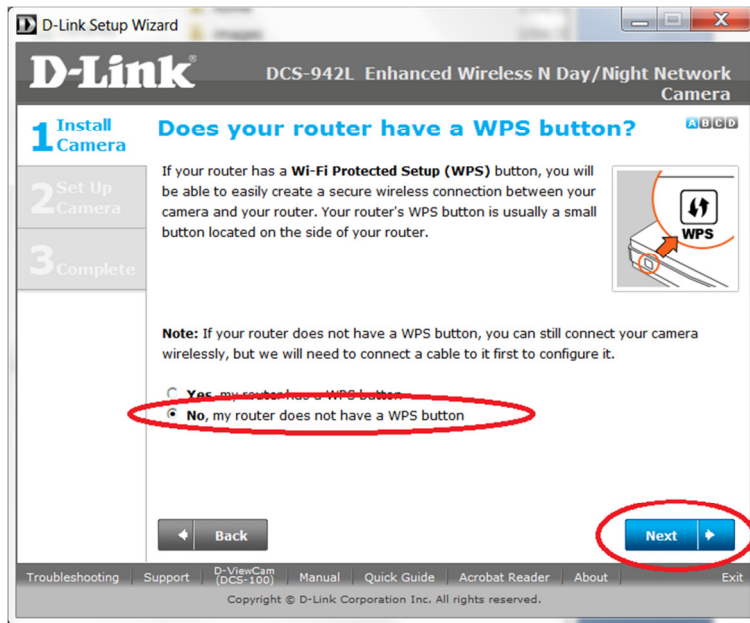
4. The ActiveX install routine will be checked and or installed for the DCS-942L to run correctly:



5. The network connection present on the DCS-942L will also be checked to ensure on a successful setup:



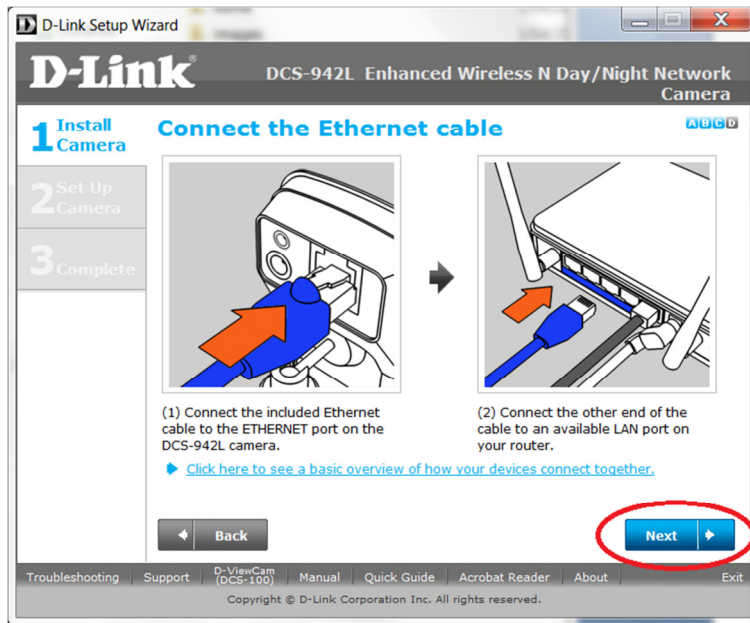
6. Under the WPS button screen leave the default option and click Next:



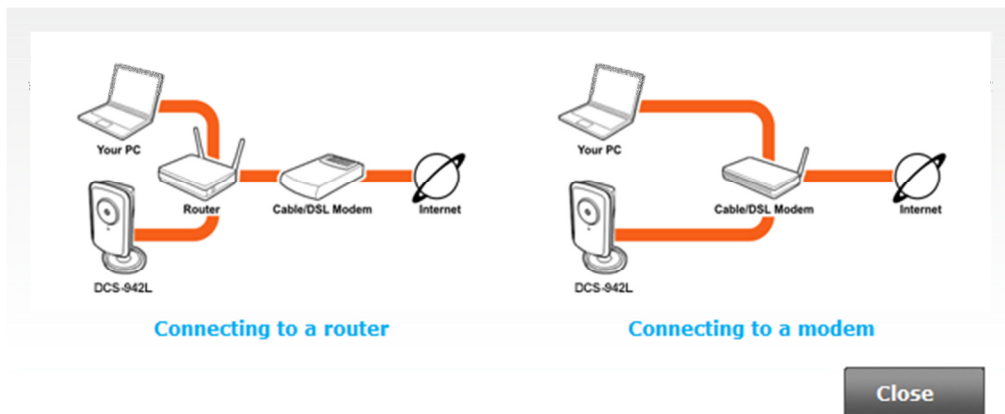
7. Using the collar (stand) position the DCS-942L for the viewing position that you require. Click the Next button:



8. This step should already be completed, under Step 1. Click the Next button:



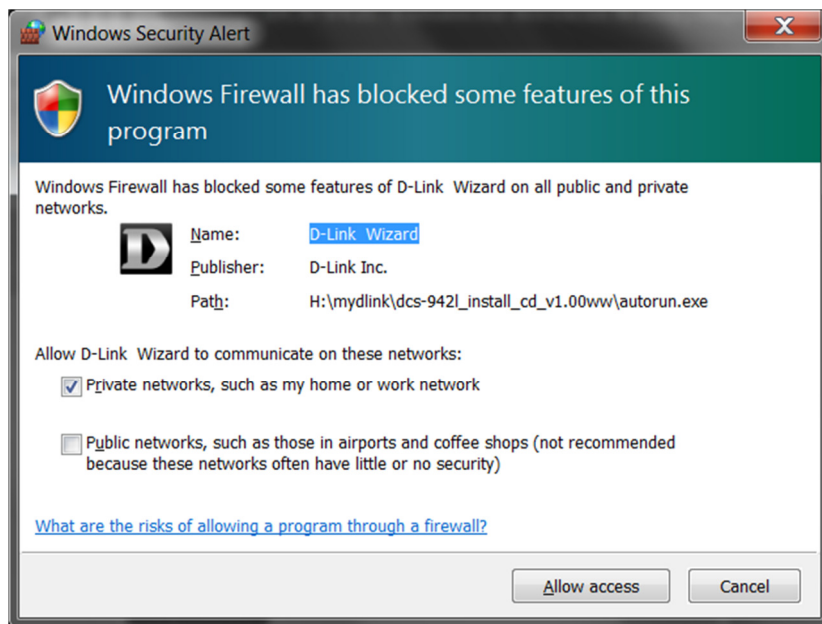
NOTE: You may click on the hyperlink to provide you with a basic overview of your devices connected together. Below is that illustration:



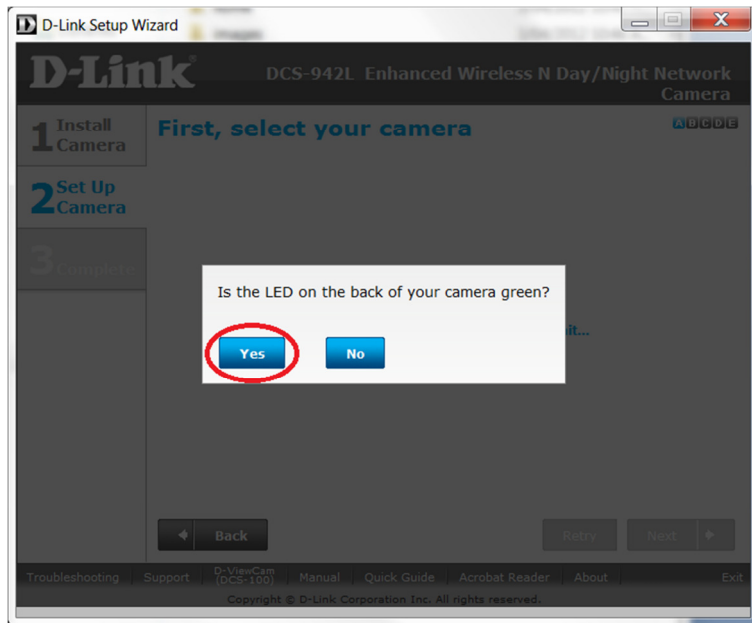
9. The power LED at the back of the DCS-942L should be green, click the Next button (provided your power LED is green as well):



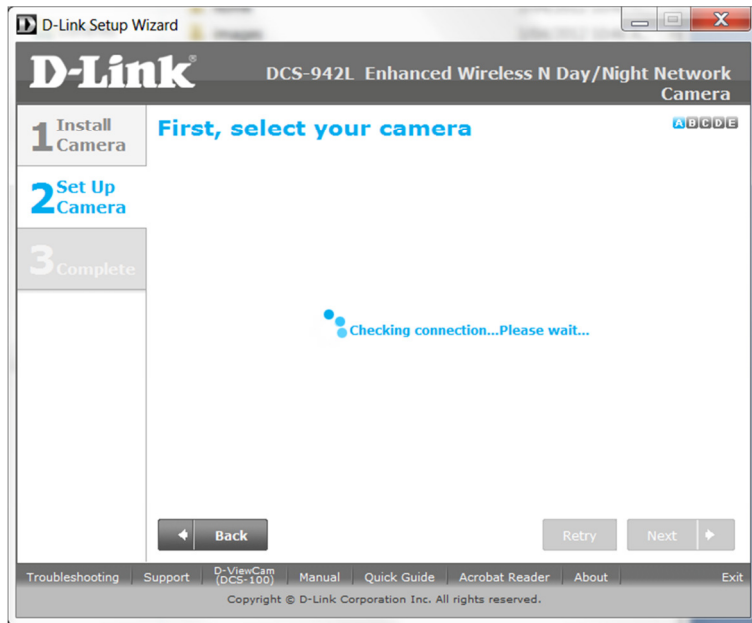
10. You must click 'Allow access' to the following prompt:



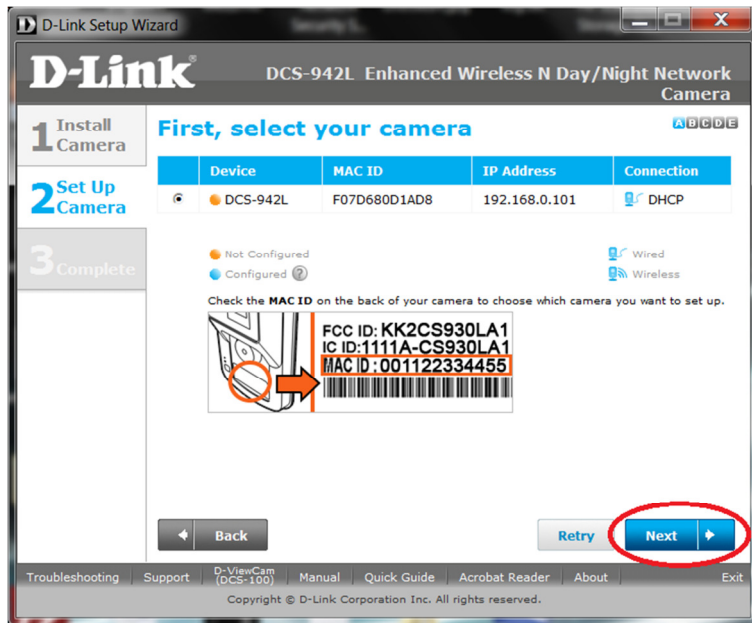
11. Click the Yes button to the below illustration:



12. Please patiently wait for the Setup Utility to detect your DCS-942L:

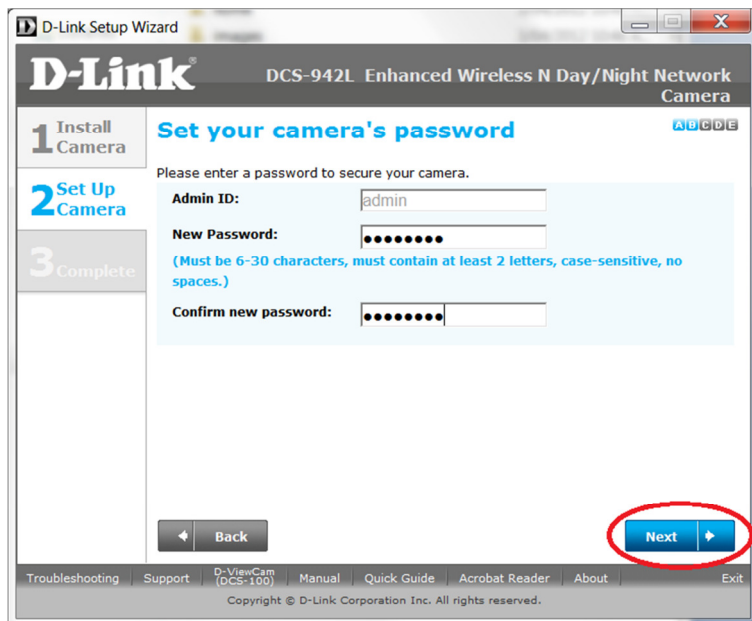


13. Once your DCS-942L has been found, click the Next button:



NOTE: If your DCS-942L is unable to be found this can be the cause of an installed Firewall/Antivirus application and or a custom configuration change to the Operating System. Your computer/router must allow UDP broadcast connection to search for the camera. If this type of communication is blocked then please disable/uninstall and or configure your Firewall/Antivirus and Computer to allow for UDP broadcast connections.

14. Type in a New Password and Confirm new password to secure your DCS-942L Web Configuration, then click Next:



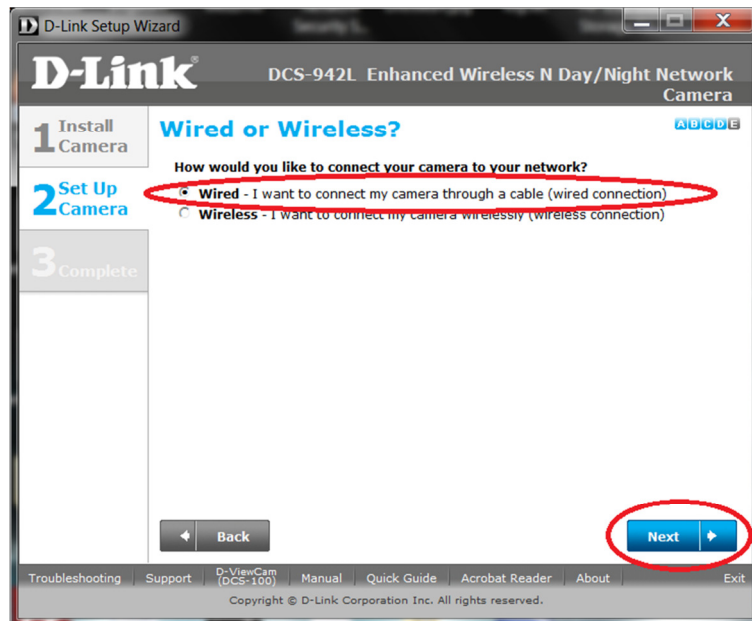
15. Patiently wait for the DCS-942L to update its configuration:



16. Under the Wired or Wireless screen you have the option to select the Wired or Wireless option for the connection of your DCS-942L. Select the heading which matches your installation option (scroll further down for Wireless).

Wired Connection:

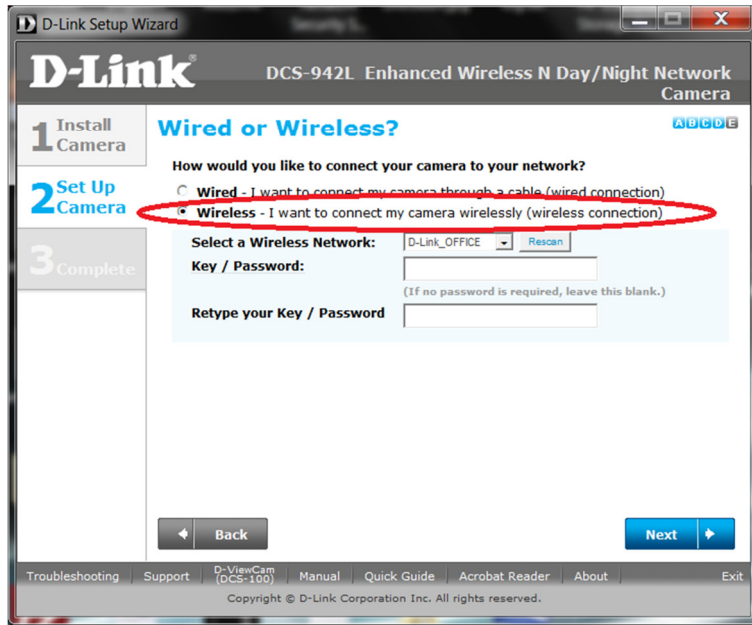
16a. Leave it on the Wired option and click the Next button:



16b. Go straight to Step 20.

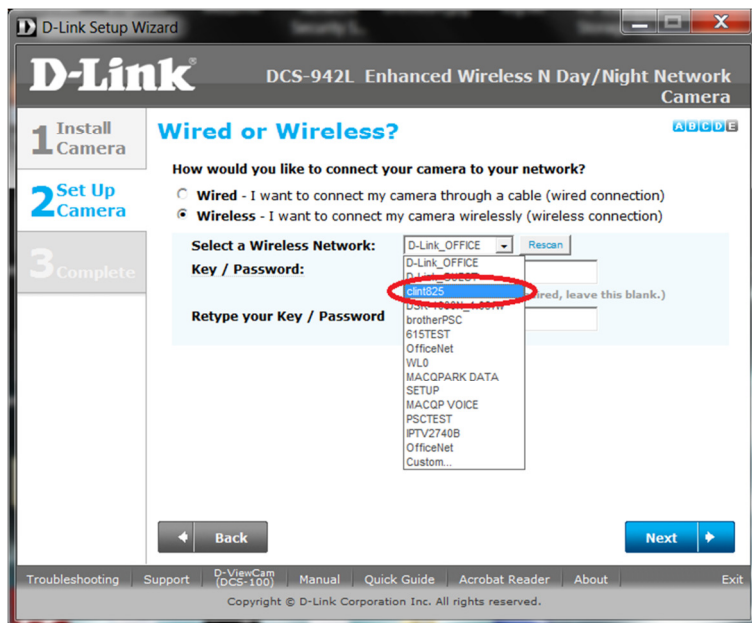
Wireless Connection:

16c. Select the Wireless option:



NOTE: The Setup Utility will automatically search for nearby Wireless SSID's, however you may also click on the 'Rescan' button as well.

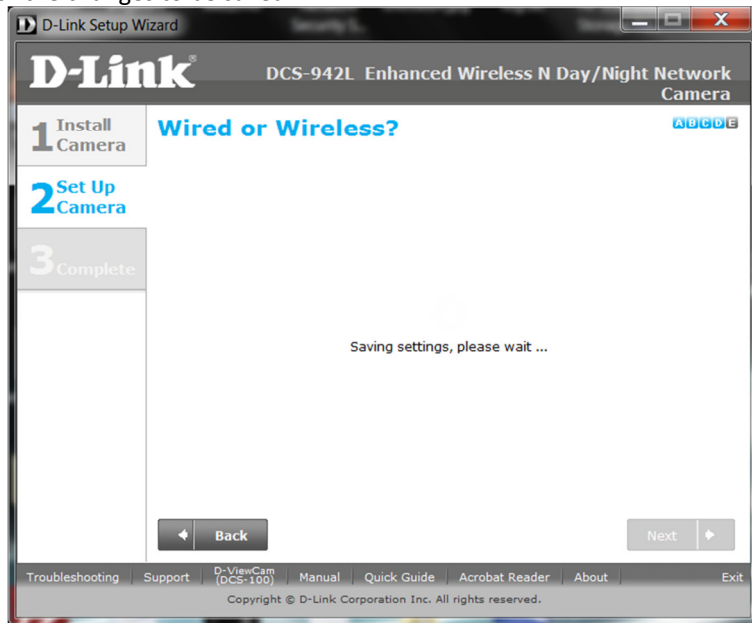
16d. Using the dropdown arrow button for 'Select a Wireless Network', please select the Wireless Name or SSID of your Wireless Access Point:



16e. Please type in your wireless password into the Key / Password field and also into the Retype your Key / Password field, then click Next:



17. Patiently wait for the changes to be saved:



18. Unplug the Ethernet cable from the back of your camera. ***Patiently wait an additional 60 seconds, then click on the Continue button:***



NOTE: When disconnecting the Ethernet cable, the power LED will turn Red to Reboot, once rebooted it should turn back to green. After 60 seconds has based, now click on the Continue button.

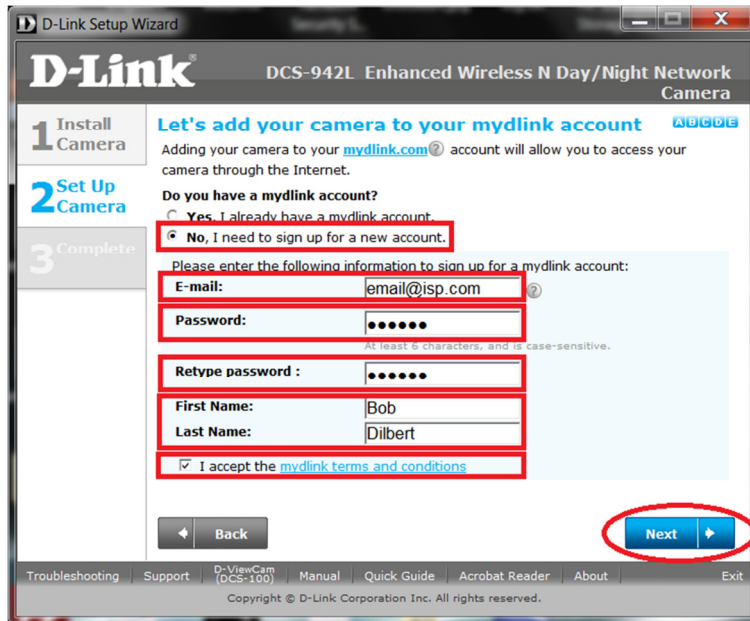
19. Patiently wait for the DCS-942L to restart and update its device information:



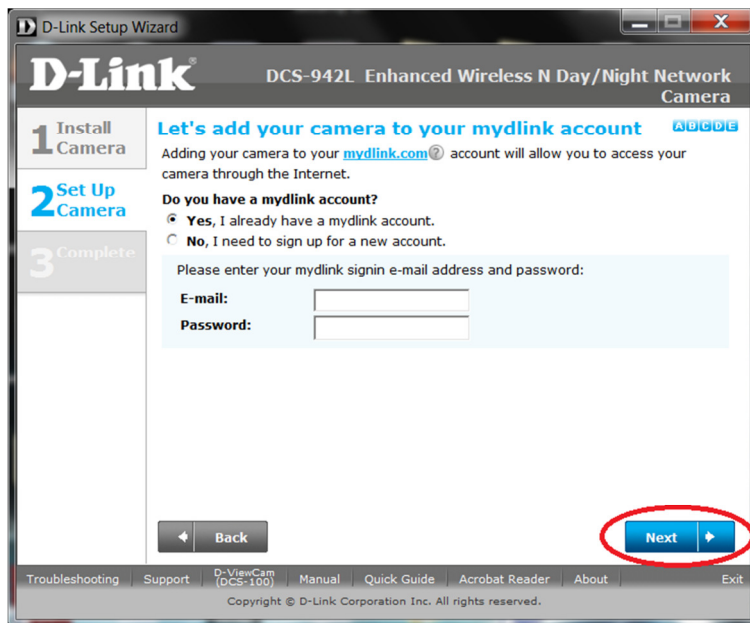
20. It is likely that you don't already have a mydlink account, so let's create one (if you already have a mydlink account, refer to Step 20a):

You will need to fill in the below requirements, such as your Email / the Password you want to assign to your mydlink account / First name and last name. You will also need to agree to the mydlink terms and conditions, then click on Next.

An example is below:

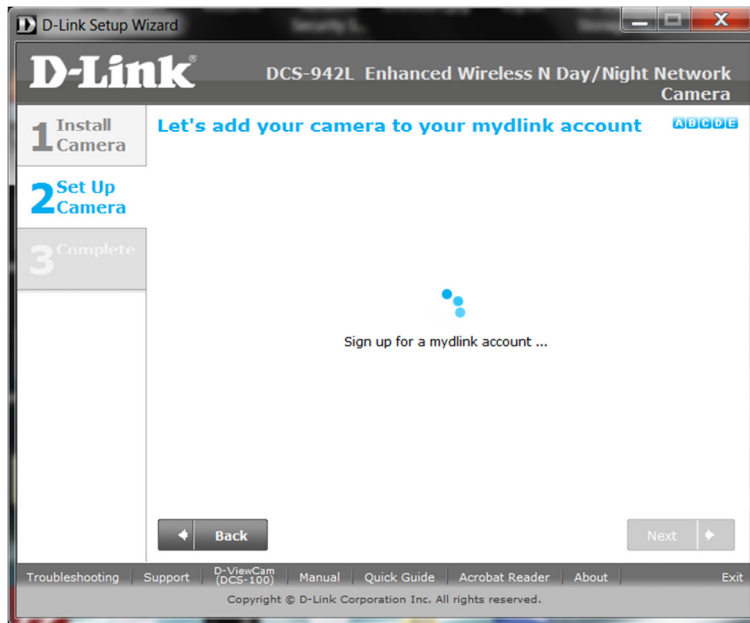


20a. If you already have a mydlink account, select 'Yes, I already have a mydlink account' and fill out the below requirement. Then click Next:

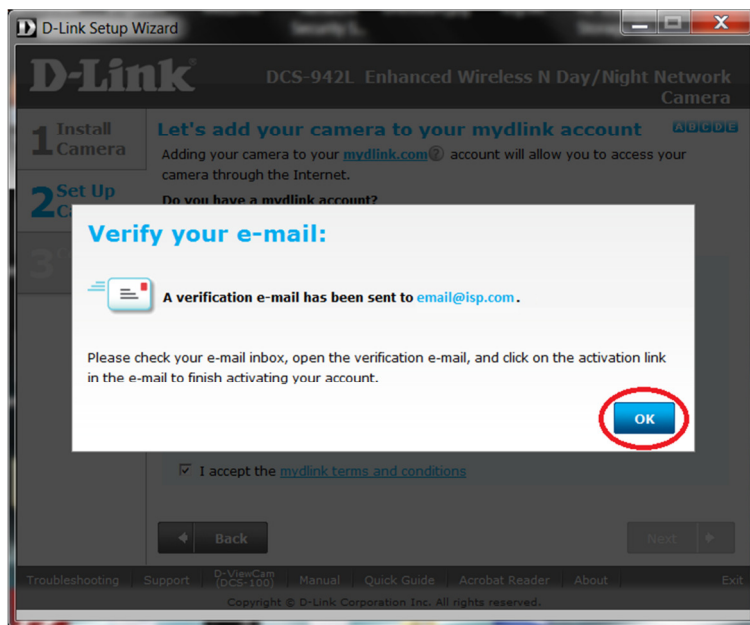


NOTE: Jump to Step 23 if you selected "Yes, I already have a mydlink account".

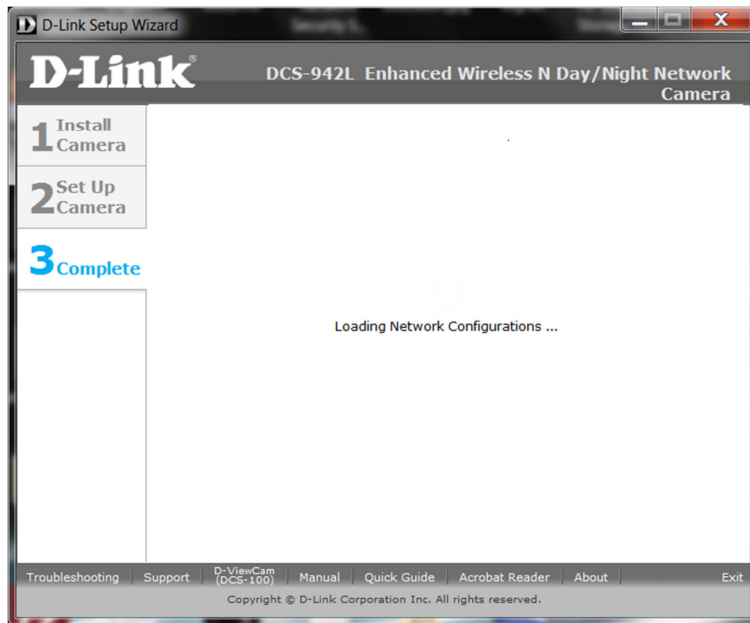
21. Your mydlink account will now be created:



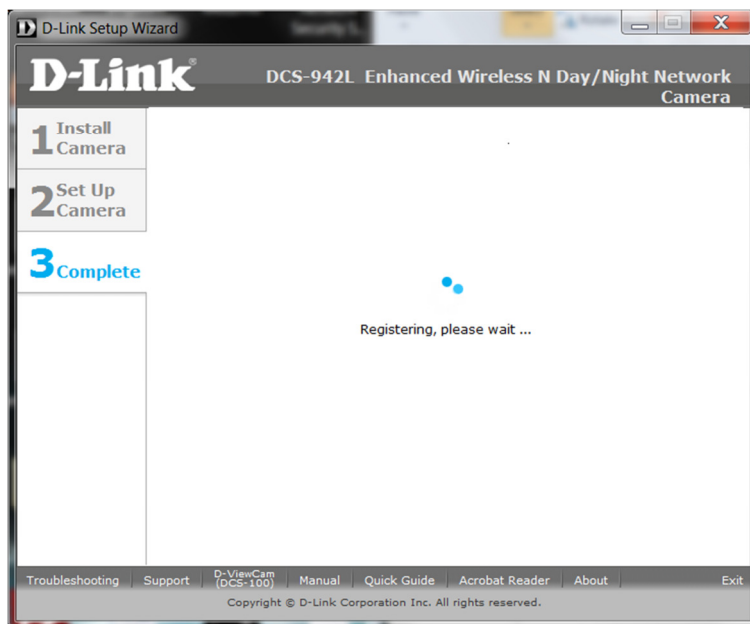
22. An email will be sent to the email address which you specified. You will need to check your email inbox and click on the activation link to finish activating your mydlink account, then click on the OK button:



23. Patiently wait for the Network Configuration to complete:

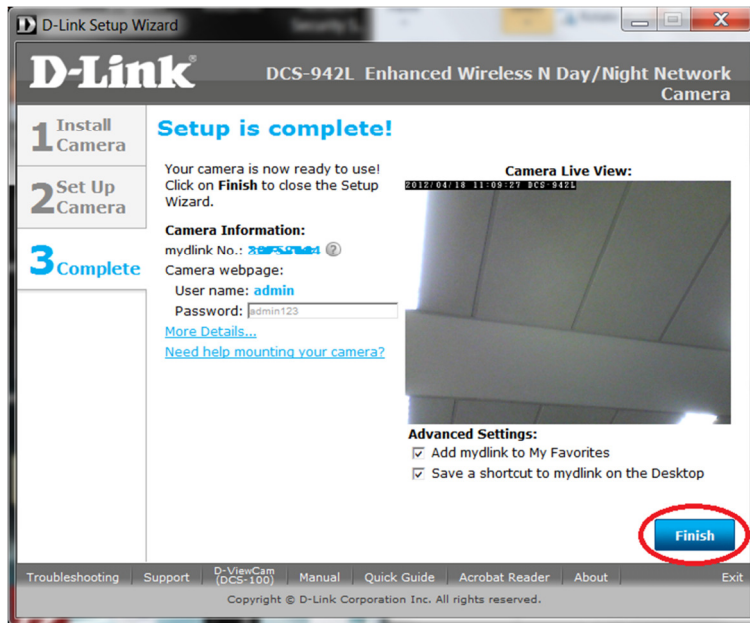


24. The Setup Utility will now complete the registration process and add your DCS-942L to your mydlink account:

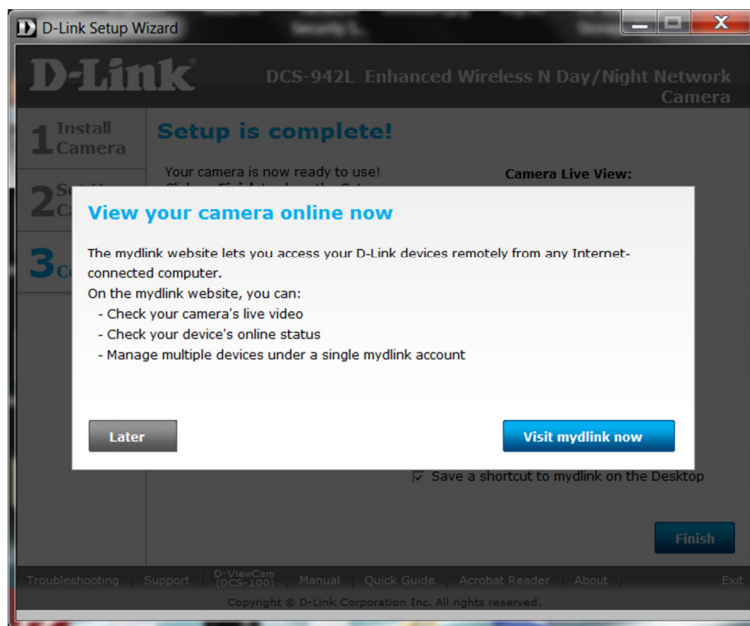


NOTE: Patiently wait for the process to complete. Up to 2 minutes.

25. Your DCS-942L Setup is now complete. Click on the Finish button.



26. You have the option to Visit mydlink now and login to view your DCS-942L, or at a later time:



~ End of Document ~