

# New Firmware Upgrade Procedure



**Note: If the device is with old firmware as follows, please follow up the upgrade procedure to upgrade to the latest firmware.**



Model	Old F/W	The latest F/W
<b>DGS-1216T</b>	V4.00.xx, V4.10.xx	V4.21.01
<b>DGS-1224T</b>	V4.00.xx ,V4.10.xx	V4.21.01
<b>DES-1228</b>	V1.00.xx	V1.11.01
<b>DES-1252</b>	V1.00.xx	V1.11.01
<b>DES-1228P</b>	V1.00.xx, V1.10.xx, V1.20.xx	V1.31.01

## Upgrade Procedure:

User has to upgrade **three** different firmware files (FWU.hex, WSSldr.hex, FWN.hex) in order to accomplish new firmware upgraded. Please find the firmware file in the attached file as below.

## File Requirement :

General Name	<b>DGS-1216T v.D1/D2</b>	<b>DGS-1224T v.D1/D2</b>
FWU.hex	1216TFWU.hex	1224TFWU.hex
WSSldr.hex	1216Tldr.hex	1224Tldr.hex
FWN.hex	<b>DGS-1216T_DX_42101.hex</b>	<b>DGS-1224T_DX_42101.hex</b>
Firmware File	 DGS-1216T_DX_4_21_01.zip	 DGS-1224T_DX_4_21_01.zip

General Name	<b>DES-1252 v.A1</b>	<b>DES-1228 v.A1</b>
FWU.hex	1252FWU.hex	1228FWU.hex
WSSldr.hex	1252ldr.hex	1228ldr.hex
FWN.hex	<b>DES-1252_A1_11101.hex</b>	<b>DES-1228_A1_11101.hex</b>
Firmware File	 DES-1252_A1_1_11_01.zip	 DES-1228_A1_1_11_01.zip

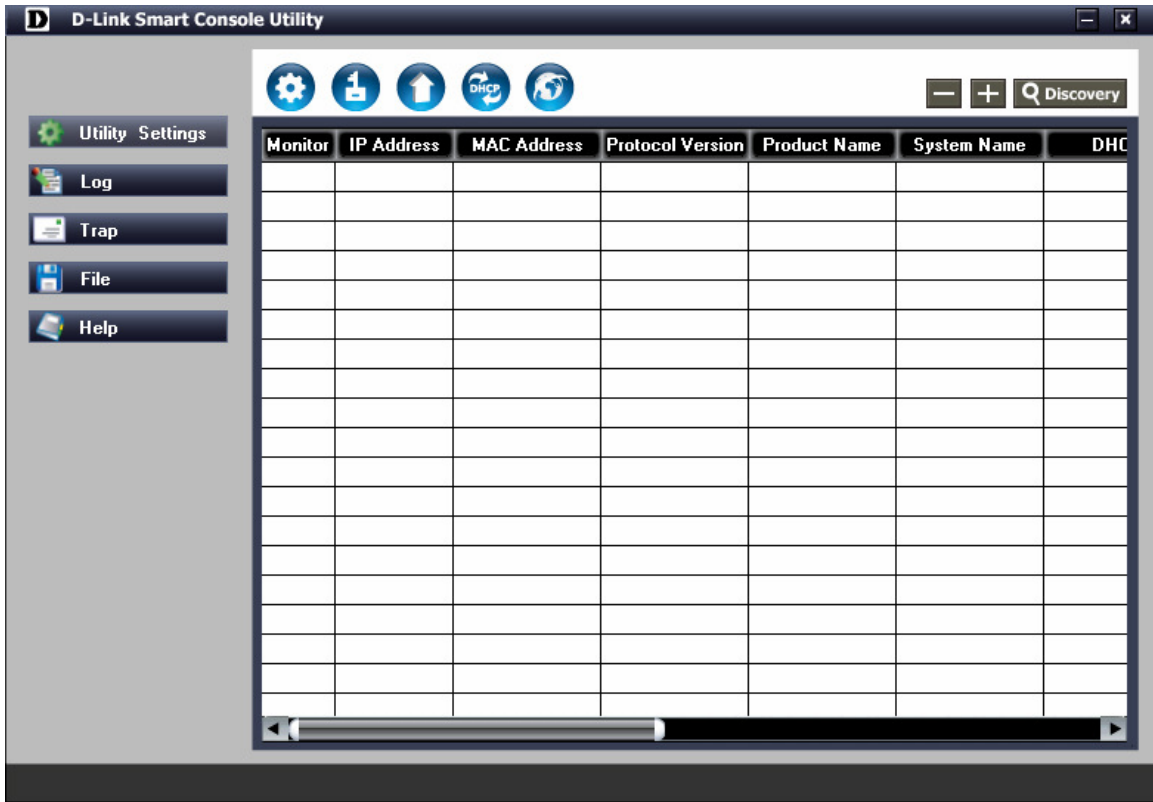
General Name	<b>DES-1228P v.A1/A2</b>
FWU.hex	1228PFWU.hex
WSSldr.hex	1228Pldr.hex
FWN.hex	<b>DES-1228P_A1&amp;A2_13101.hex</b>

Firmware File	 DES-1228P_A1&A2 _1_3101.zip
------------------	---

Users can upgrade firmware either through SmartConsole Utility or Web GUI, please follow up the steps as follows.

1. Upgrade firmware through SmartConsole Utility (Please refer to below step. i-xi)

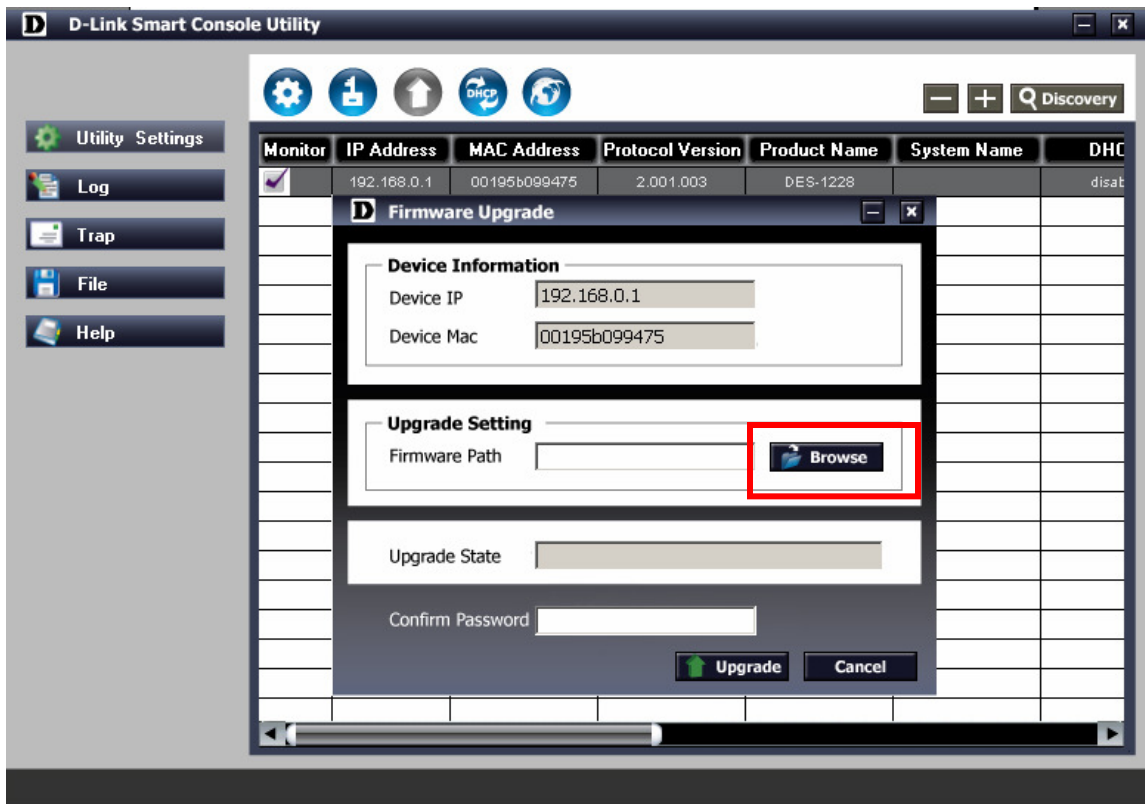
i. Execute smart console utility

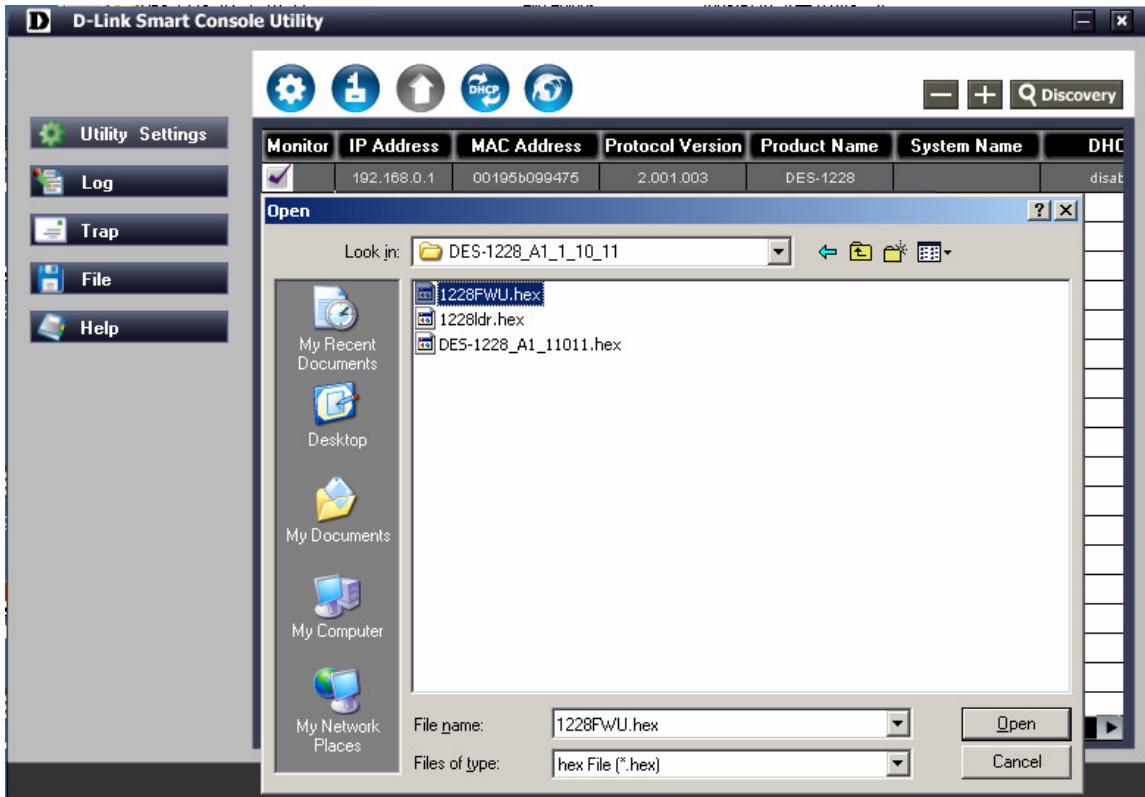




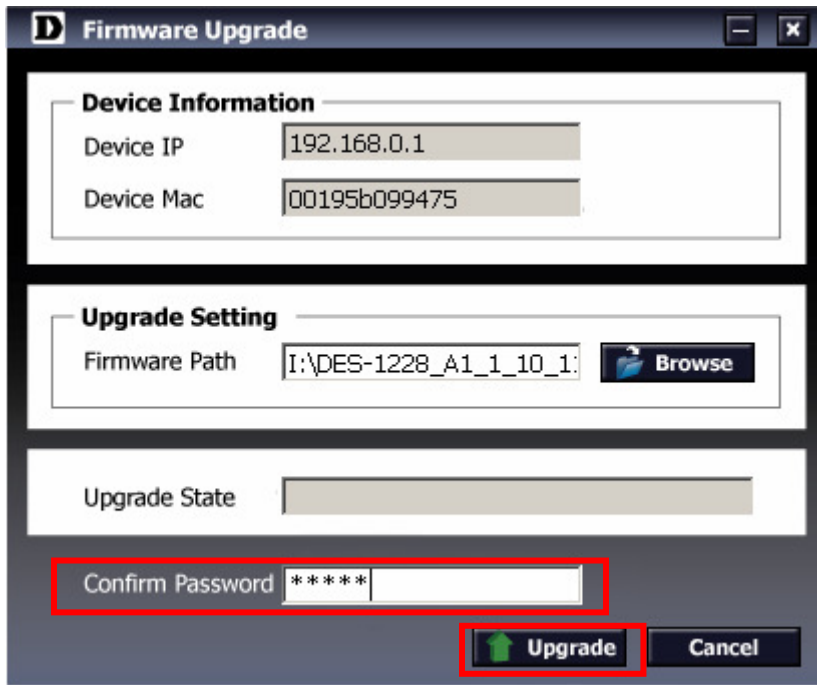


- v. Click Browse button to search fwu.hex firmware file from user's local PC



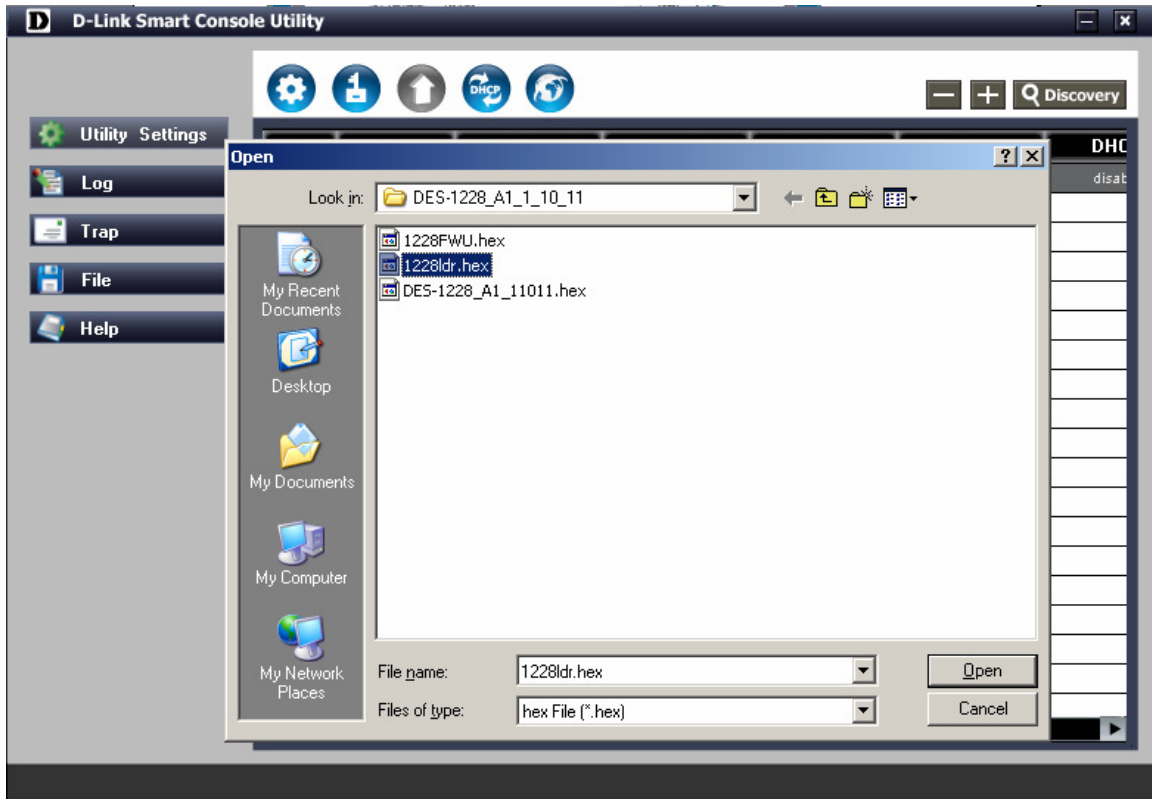


vi. Enter password and click “Upgrade” button to start firmware upgrade

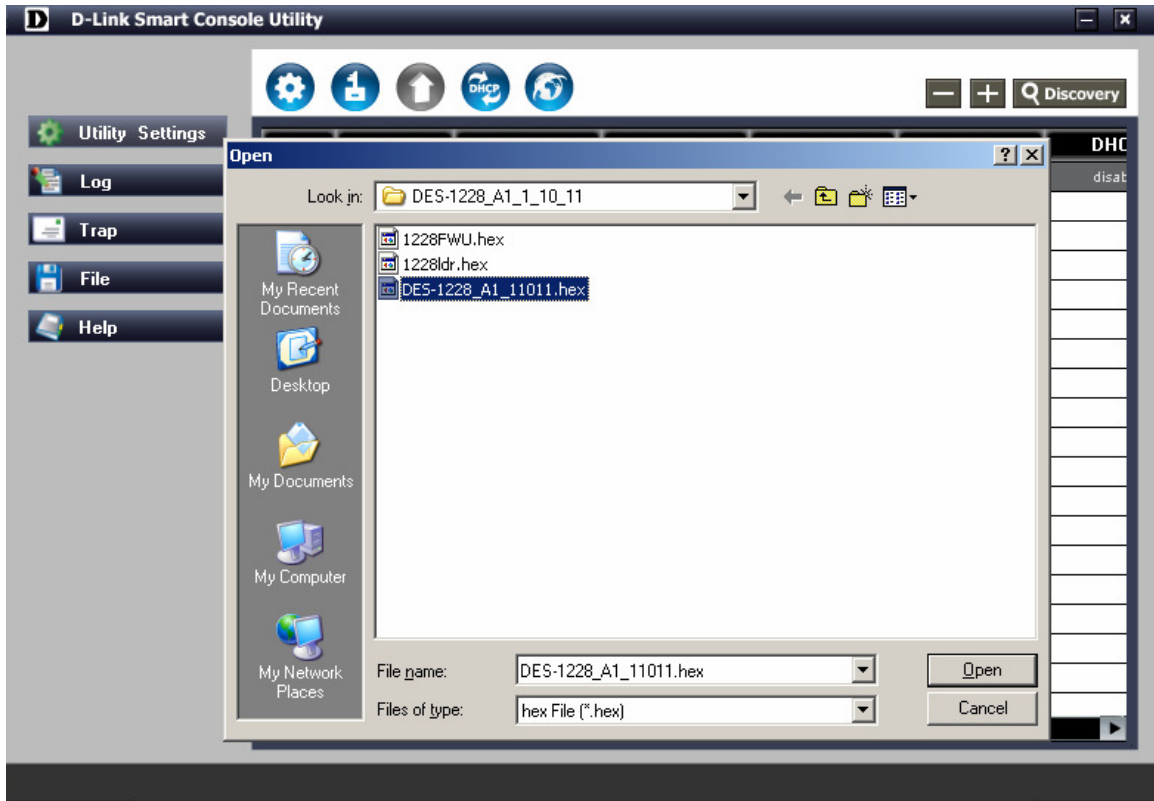








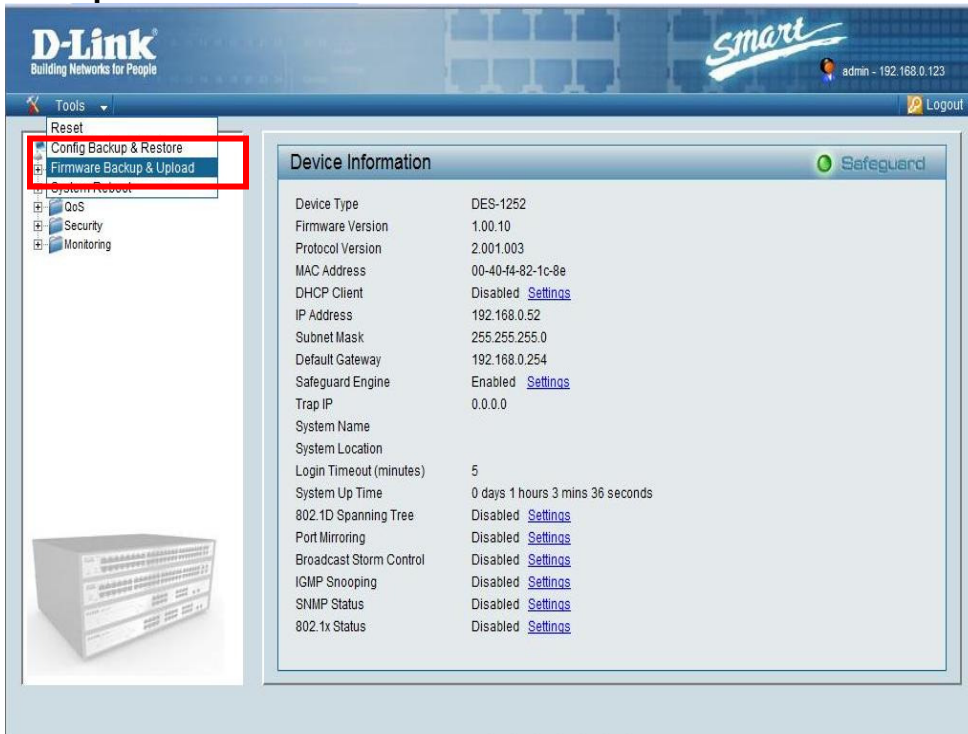
ix. Repeat step.i ~ step.vii , and choose the following .hex (DGS-1216T\_DX\_4xxxx.hex, DGS-1224T\_DX\_4xxxx.hex, DES-1252\_A1\_1xxxx.hex, DES-1228\_A1\_1xxxx.hex, DES-1228P\_A1&A2\_1xxxx.hex) to upgrade in step.v



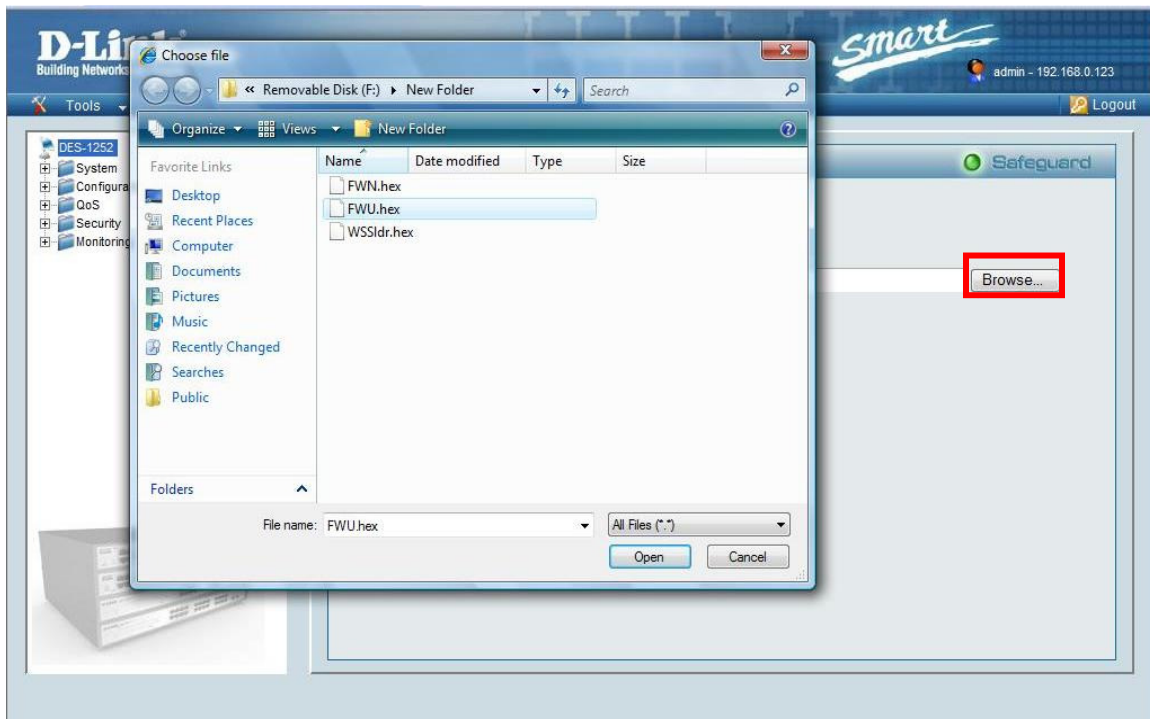
## 2. Upgrade firmware through Web GUI (Please refer to below step. i-vi)

- i. Open Web GUI , clicking tool and selecting Firmware Backup &

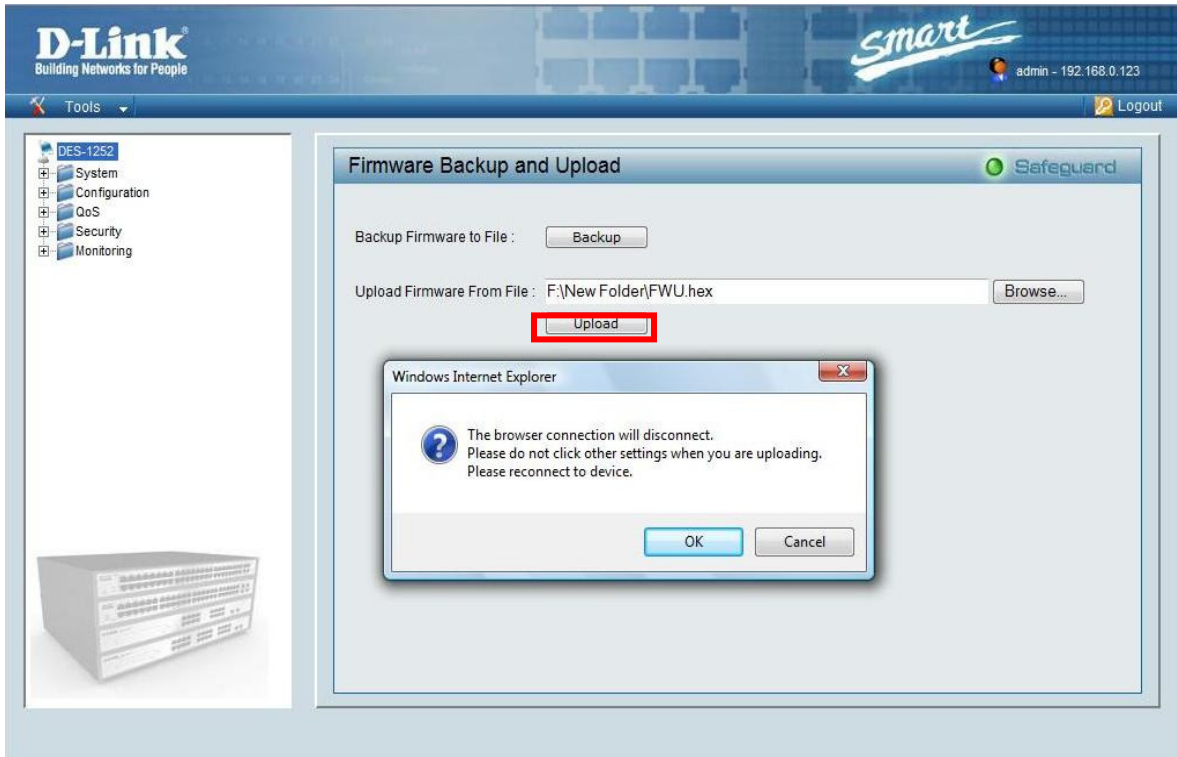
## Upload



ii. Click browse button and search fwu.hex firmware file from local user's PC

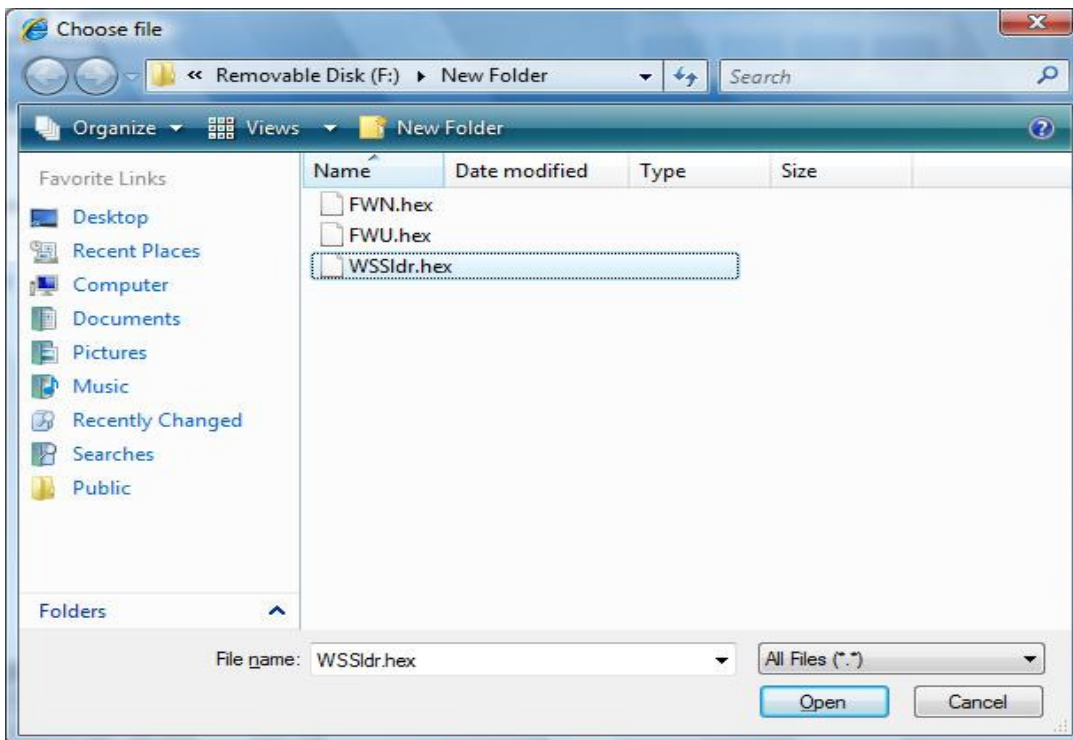


iii. Click Upload button to start upgrade firmware



iv. Wait for firmware upgrade complete then the device will reboot automatically

v. Repeat step.i ~ step.iv , but choose ldr.hex in step.ii



vi. Repeat step.i ~ step.iv , but choose the following .hex(DGS-1216T\_DX\_4xxxx.hex, DGS-1224T\_DX\_4xxxx.hex, DES-1252\_A1\_1xxxx.hex, DES-1228\_A1\_1xxxx.hex, DES-1228P\_A1&A2\_1xxxx.hex) in step.ii

