

# D-Link

## Quick Installation Guide

This product can be set up using any current web browser, i.e., Internet Explorer 6 or Netscape Navigator 6 or above



**DFL-700**  
**Network Security**  
**Firewall**

## Before You Begin

If you purchased this Network Security Firewall to connect to your high-speed Internet connection in a secure manner, you must have either an Ethernet-based Cable or DSL modem with an established Internet account from an Internet Service Provider (ISP).

## Check Your Package Contents



**DFL-700 Network Security Firewall**



**CD-ROM (containing Manual and Warranty)**



**Ethernet (CAT5 UTP/Straight Through) Cable**



**Console Cable (RS 232)**



**5V DC Power Adapter**



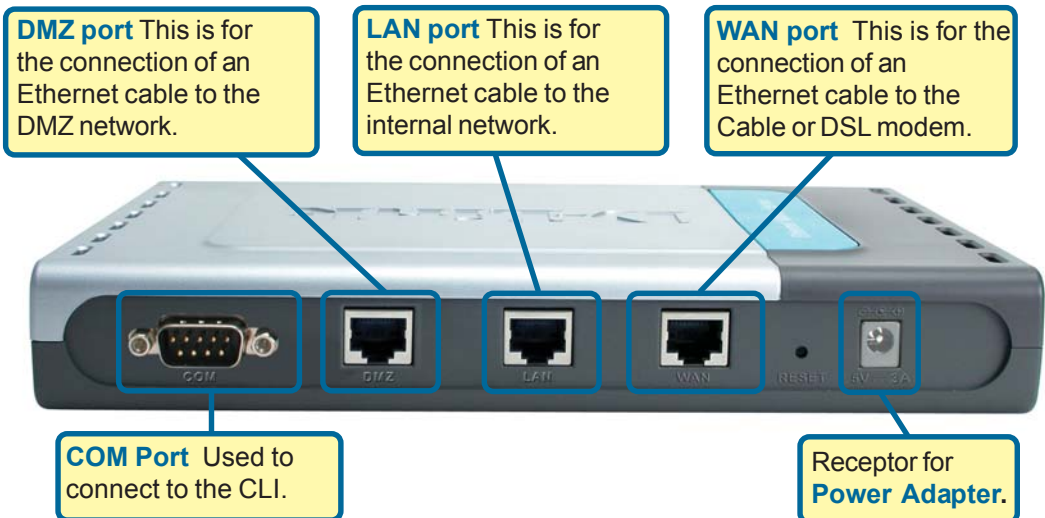
Using a power supply with a different voltage rating will damage this product and void its warranty.

If any of the above items are missing, please contact your reseller.

# 1

## Connecting The DFL-700 Network Security Firewall To Your Network

- A.** First, connect the power adapter to the **receptor** at the back panel of the DFL-700 and then plug the other end of the power adapter to a wall outlet or power strip. The Power LED will turn **ON** to indicate proper operation.
- B.**
  1. Power off your Cable or DSL modem; some devices may not have a on/off switch and will require you to unplug the power adapter. Now, the DFL-700 should be powered on and the Cable / DSL modem should be turned off.
  2. Cable / DSL modem (**Power Off**) – DFL-700 (**Power On**)  
Connect an Ethernet cable to the Ethernet jack located on the Cable / DSL modem. After the Ethernet cable is securely connected, power on the Cable / DSL modem by turning on the unit or plugging in the power adapter.
  3. Cable / DSL modem (**Power On**) – DFL-700 (**Power On**)  
Insert the other end of the Ethernet cable to the **WAN port** on the back panel of the DFL-700. The WAN LED light will illuminate to indicate proper connection. If the WAN LED is not illuminated, please go back to step B and repeat its instructions.
- C.** Insert an Ethernet cable to the **LAN port** on the back panel of the DFL-700 and connect it to a port on your network hub or switch. The LED light for the LAN port on the DFL-700 will illuminate to indicate proper connection
- D.** Connect the computer that you will use to configure the DFL-700 to the network hub or switch.

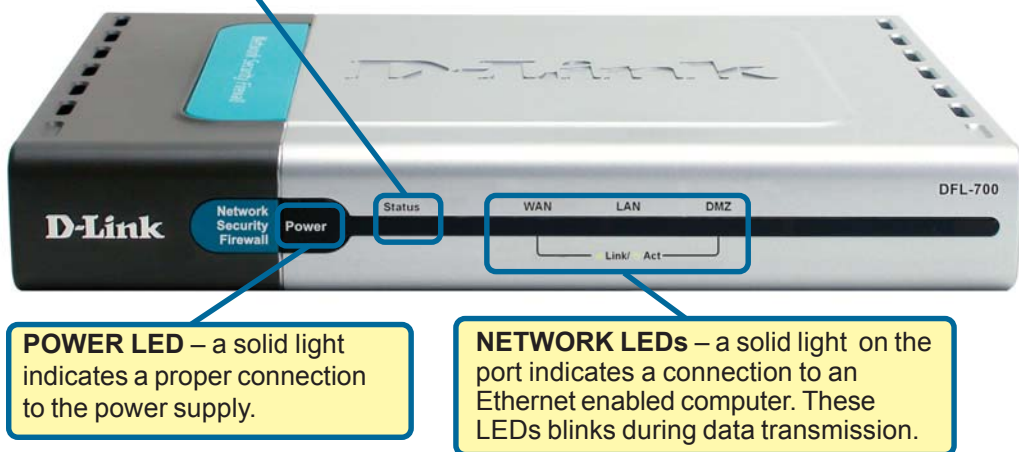


## 2

## Restart your computer

To obtain a new IP address from the DFL-700 you will need to restart your computer. Make sure that the network adapter in your computer is configured properly first. Instructions on how to configure the network adapter to obtain an IP address automatically from the DFL-700 can be found in the appendix.

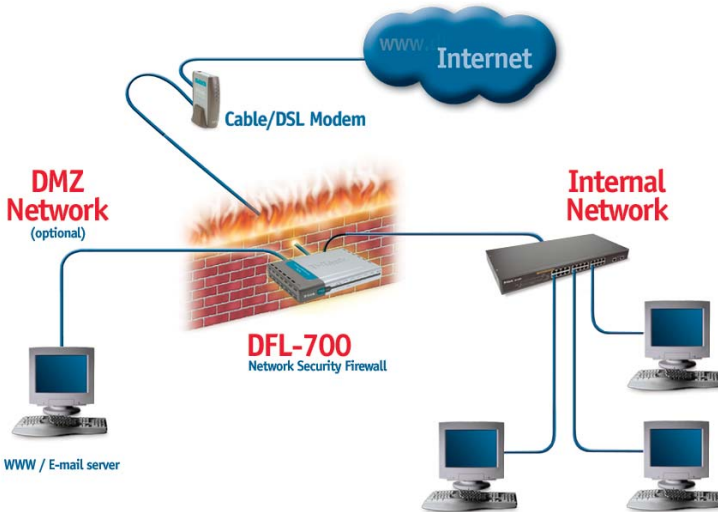
**STATUS LED** – will flash consistently to indicate that the DFL-700 is working properly.



**POWER LED** – a solid light indicates a proper connection to the power supply.

**NETWORK LEDs** – a solid light on the port indicates a connection to an Ethernet enabled computer. These LEDs blink during data transmission.

When you have completed the steps in this *Quick Installation Guide*, your connected network should look similar to this:



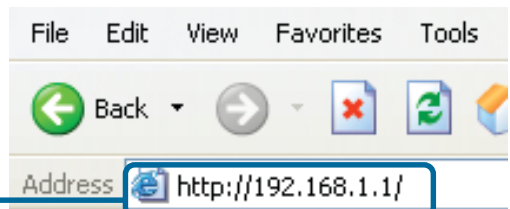
### 3

## Using The Setup Wizard

The DFL-700 provides Web based configuration. You can configure your DFL-700 through your Netscape Communicator or Internet Explorer browser in MS Windows, Macintosh or UNIX based platforms.

Activate your browser. Then type the IP address of the DFL-700 into the Location (for Netscape) or Address (for IE) field and press "Enter." For example: `http://192.168.1.1`.

**Open your Web browser** and type "**`http://192.168.1.1`**" into the URL address box. Then press the **Enter** or **Return** key.



(The IP Address shown in the example above is the default setting. If you have changed the IP Address of the DFL-700 to conform to a network, then input that IP Address in the web browser, instead of the default IP Address shown.)

# 3

## The Setup Wizard (continued)

Welcome to the DFL-700 connection wizard!

Here you can choose to either configure your firewall over HTTP or over Secure HTTP (HTTPS).

Click on **Connect to the unit via HTTPS instead** to use Secure HTTP

Click **Next** to keep using HTTP.

### Step 1 - Set admin password

Enter the password that you want to use for the admin account.

Click **Next**

### Step 2 - Set timezone

Select the appropriate timezone

Enter the appropriate daylight saving time settings.

Click **Next**

# 3

## The Setup Wizard (continued)

### Step 3 - Configure WAN interface

Select the appropriate configuration for the WAN interface, if you are unsure of which setting to select, please contact your Internet Service Provider.

Click **Next** and continue to step 4 further down.




**D-Link**  
Building Networks for People

**DFL-700 Setup Wizard**

**D-Link DFL-700 Setup Wizard, Step 3 - Configure WAN interface**

Select the appropriate configuration type of the internet-facing (WAN) interface. Your ISP normally tells you which type to use.

- ☒ **Static IP** - manual configuration  
Most commonly used in dedicated-line internet connections. Your ISP provides the IP configuration parameters to you.
- ☐ **DHCP** - automatic configuration  
Regular ethernet connection with DHCP-assigned IP address. Used in many DSL and cable modem networks. Everything is automatic.
- ☐ **PPPoE** - account details needed  
PPP over Ethernet connection. Used in many DSL and cable modem networks. After providing account details, everything is automatic.
- ☐ **PPTP** - account details needed  
PPTP over Ethernet connection. Used in some DSL and cable modem networks. You need account details, but also IP parameters for the physical interface that the PPTP tunnel runs over.
- ☐ **Big Pond** - account details needed  
Regular ethernet connection with DHCP-assigned IP address, plus authentication via a special protocol. Used by the ISP "Big Pond".

    
**Back Next Exit**



If you are unsure of which setting to select, please contact your Internet Service Provider

Click **Next**

# 3

## The Setup Wizard (continued)

### Step 3 - Static IP

If you selected Static IP you have to fill out the IP address information provided to you by your ISP. You will need to complete all the required fields except for Secondary DNS Server. You should probably not use the numbers displayed in these fields, they are only used as an example.

Click **Next** and continue to step 4 further down.

Click **Next**

**D-Link**  
Building Networks for People

**DFL-700 Setup Wizard**

**D-Link DFL-700 Setup Wizard, Step 3 - Configure WAN interface**

Static WAN interface configuration is most commonly used in dedicated-line internet connections. Your ISP usually provides this information to you.

IP Address:

Subnet Mask:  - 256 hosts (/24)

Gateway IP:

Primary DNS Server:

Secondary DNS Server:  (optional)

Back Next Exit

### Step 3 - PPPoE

If you selected PPPoE (Point-to-Point Protocol over Ethernet) you will have to fill out the user name and password provided to you by your ISP. The PPPoE Service Name field should be left blank unless your ISP informs you otherwise.

Click **Next** and continue to step 4 further down.

Click **Next**

**D-Link**  
Building Networks for People

**DFL-700 Setup Wizard**

**D-Link DFL-700 Setup Wizard, Step 3 - Configure WAN interface**

PPP over Ethernet connections are used in many DSL and cable modem networks. After authenticating, everything is automatic.

Username:

Password:

Retype Password:

Service Name:  (Some ISPs require the Service Name to be filled out.)

Back Next Exit

# 3

## The Setup Wizard (continued)

### Step 3 - PPTP

If you selected PPTP you will need to specify both **PPTP tunnel parameters** and **Physical interface parameters**.

#### PPTP tunnel parameters:

Enter the Username, Password and the PPTP Server IP address provided by your ISP.

#### Physical interface parameters:

##### DHCP

If your Internet Service Provider is using DHCP you should select the DHCP radio button.

##### Static IP

If your Internet Service Provider is using Static IP you should select the Static IP radio button and enter IP Address, choose a Subnet Mask and enter the Gateway IP address.

Click **Next**

**D-Link**  
Building Networks for People

**DFL-700 Setup Wizard**

**D-Link DFL-700 Setup Wizard, Step 3 - Configure WAN interface**

PPTP over Ethernet connections are used in some DSL and cable modem networks. You need account details, and possibly also IP configuration parameters of the actual physical interface that the PPTP tunnel runs over. Your ISP should supply this information.

**PPTP tunnel parameters:**

Username:

Password:

Retype Password:

PPTP Server IP:

**Physical interface parameters:**

☒ **DHCP** - automatic configuration  
Everything is automatic.

☐ **Static IP** - manual configuration  
Your ISP should provide this information to you.

IP Address:

Subnet Mask:  - 255 hosts (/24)

Gateway IP:

This may or may not be necessary, depending on the ISP.



# 3

## The Setup Wizard (continued)

### Step 3 - Big Pond

If you selected Big Pond you will have to fill out the user name and password provided to you by your ISP.

Click **Next** and continue to step 4 further down.

**D-Link**  
Building Networks for People

### DFL-700 Setup Wizard




**D-Link DFL-700 Setup Wizard, Step 3 - Configure WAN interface**

Regular ethernet connection with DHCP-assigned IP address, plus authentication via a special protocol. Used by the ISP "Big Pond".

Username:

Password:

Retype Password:

Back Next Exit

Click **Next**

# 3

## The Setup Wizard (continued)

### Step 4 - Set up built-in DHCP server

If you want to use the built-in DHCP Server in the DFL-700, choose **Enable DHCP Server** in this screen. You then need to specify a range of IP addresses to hand out to the DHCP clients. This range is entered in the format "Start IP – Stop IP" i.e. 192.168.0.100 – 192.168.0.200. If you don't want to use the built-in DHCP Server or configure it later, choose **Disable DHCP Server** and click **Next** when done.

**D-Link**  
Building Networks for People

**DFL-700 Setup Wizard**

**D-Link DFL-700 Setup Wizard, Step 4 - Set up built-in DHCP server**

You may enable the built-in DHCP server so that the gateway can hand out IP addresses to clients on the LAN via the DHCP protocol.

☐ Disable DHCP Server

☒ Enable DHCP Server

Enter a range of IP addresses to hand out to DHCP clients:

IP Range:

Back Next Exit

Click **Next**

### Step 5 - Configure helper servers

**NTP Servers** - If enabled, specify which NTP Servers that should be used to synchronize the firewall time

**Syslog Servers** – If enabled, specify where the firewall should log, you can specify up to two Syslog receivers.

**D-Link**  
Building Networks for People

**DFL-700 Setup Wizard**

**D-Link DFL-700 Setup Wizard, Step 5 - Configure helper servers**

☒ **Time servers** - for automatically keeping the unit's time accurate

Primary NTP Server:

Secondary NTP Server:  (optional)

☒ **Syslog servers** - for receiving log data from the unit

If both servers are configured, logs will be sent to both at the same time

Syslog server 1:

Syslog server 2:  (optional)

Back Next Exit

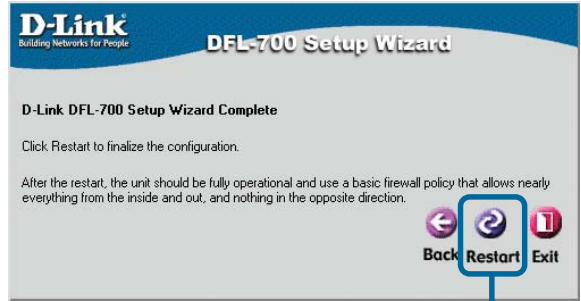
Click **Next**

# 3

## The Setup Wizard (continued)

### Setup Wizard Complete

Click **Restart** to complete your configuration.



Click **Restart**

# APPENDIX

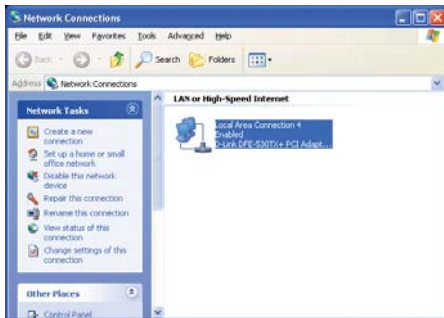
To connect to the network, make sure the network adapter in your computer is configured properly. Here's how to configure the network adapter to obtain an IP address automatically from the DFL-700 Network Security Firewall.

For **Microsoft Windows XP**:

Go to **Start > right click on**

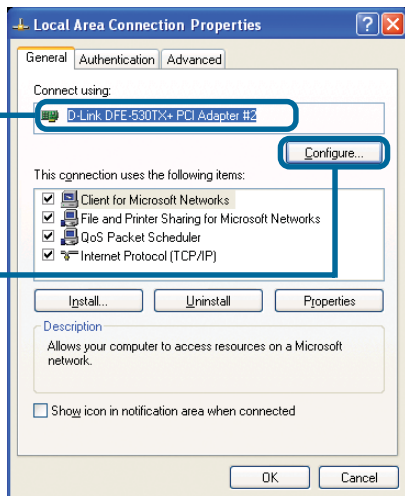
**My Network Places >**

select **Properties > Double-click** on the **Network Connection** associated with the Ethernet adapter (i.e., D-Link DFE-530TX+).



Click **Internet Protocol (TCP/IP)**

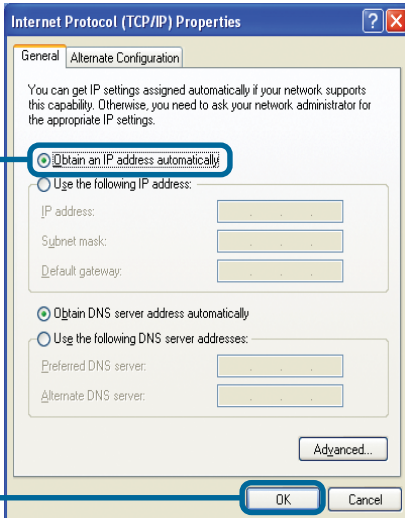
Click **Properties**



Select **Obtain an IP address automatically**

Click **OK**

**Restart** your computer



## For Apple Macintosh OS X:

Go to the **Apple Menu** Click on **Network** and Select **System Preferences**

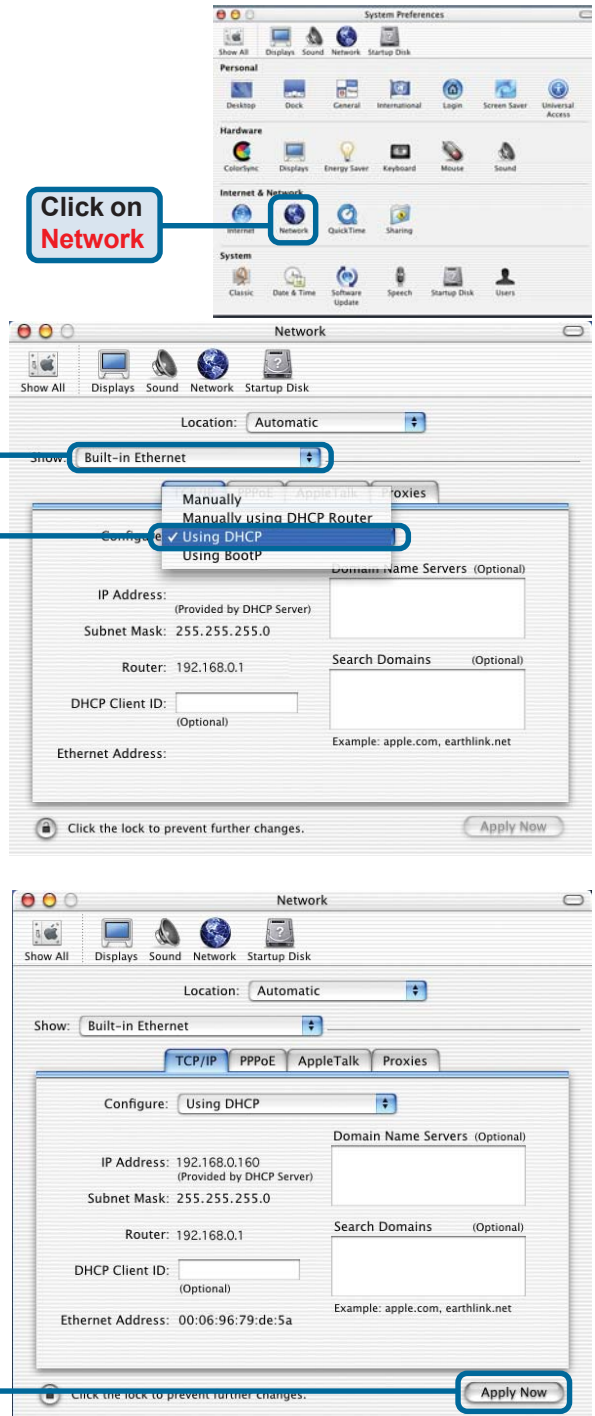
Click on **Network**

Select **Built-in Ethernet** in the show pull down menu

Select **Using DHCP** in the Configure pull down menu

Click on **Apply Now**

The IP address information, the Subnet Mask, the DFL-700 IP address and the Ethernet adapter address will appear



# Technical Support

You can find software updates and user documentation on the D-Link website.

D-Link provides free technical support for customers within the United States and within Canada for the duration of the warranty period on this product.

U.S. and Canadian customers can contact D-Link technical support through our website, or by phone.

## Tech Support for customers within the United States:

### ***D-Link Technical Support over the Telephone:***

(877) 453-5465

6am-6pm PST, Mon-Fri.

### ***D-Link Technical Support over the Internet:***

<http://support.dlink.com>

email: [support@dlink.com](mailto:support@dlink.com)

## Tech Support for customers within Canada:

### ***D-Link Technical Support over the Telephone:***

(800) 361-5265

Monday to Friday 8:30am to 9:00pm EST

### ***D-Link Technical Support over the Internet:***

<http://support.dlink.ca>

email: [support@dlink.ca](mailto:support@dlink.ca)

## Tech Support for customers within the United Kingdom & Ireland:

### ***D-Link UK & Ireland Technical Support over the Telephone:***

+44 (0)20 7365 8440 (United kingdom)

+353 (0)12 421 061 (Ireland)

Monday to Friday 8:00 am to 10:00 pm

### ***D-Link Technical Support over the Internet:***

<http://www.dlink.co.uk>