



[DGS-1100-05 Firmware Version: 1.10.014](#)
 DGS-1100-05 PROM Code Version: 1.0.5
[DGS-1100-08 Firmware Version: 1.10.033](#)
 DGS-1100-08 PROM Code Version: 1.0.11
[DGS-1100-08P Firmware Version: 1.10.021](#)
 DGS-1100-08P PROM Code Version: 1.0.2
 DGS-1100-16/24 Firmware Version: 1.10.016
 DGS-1100-16/24 PROM Code Version: 1.0.2
 Published: [Apr. 29, 2015](#)

These release notes include important information about D-Link switch firmware revisions. Please verify that these release notes are correct for your switch:

- If you are installing a new switch, please check the hardware version on the device label; make sure that your switch meets the system requirement of this firmware version. Please refer to [Revision History and System Requirement](#) for detailed firmware and hardware matrix.
- If the switch is powered on, you can check the hardware version by checking the device information page on the web graphic user interface.
- If you plan to upgrade to the new firmware release, please refer to the [Upgrade Instructions](#) for the correct firmware upgrade procedure.

For more detailed information regarding our switch products, please refer to [Related Documentation](#).

You can also download the switch firmware and technical documentation from <http://tsd.dlink.com.tw>.

Content:

Revision History and System Requirement:	1
Upgrade Instructions:.....	3
Upgrade using Web-UI.....	3
Upgrade using SmartConsole Utility.....	4
New Features:.....	7
Changes:.....	8
Problem Fixed:	9
Known Issues:	11
Related Documentation:	13

Revision History and System Requirement:

Firmware Version	Date	Model	Hardware Version
Runtime: 1.10.014 PROM: 1.0.5	29-Apr.-2015	DGS-1100-05	A1

Runtime: 1.10.033 PROM: 1.0.11		DGS-1100-08	A1
Runtime: 1.10.021 PROM: 1.0.2		DGS-1100-08P	A1
Runtime: V1.10.011 PROM: 1.0.5	19-Nov-2014	DGS-1100-05	A1
Runtime: V1.10.030 PROM: 1.0.11		DGS-1100-08	A1
Runtime: V1.10.017 PROM: 1.0.2		DGS-1100-08P	A1
Runtime: V1.10.016 PROM: 1.0.2		DGS-1100-16 DGS-1100-24	A1
Runtime: V1.10.004 PROM: 1.0.5	14-Jun-2013	DGS-1100-05	A1
Runtime: V1.10.005 PROM: 1.0.2	14-Jun-2013	DGS-1100-08P	A1
Runtime: V1.10.004 PROM: 1.0.1	27-Mar-2013	DGS-1100-08P	A1
Runtime: V1.10.011 PROM: 1.0.11		DGS-1100-08	A1
Runtime: V1.10.011 PROM: 1.0.2		DGS-1100-16 DGS-1100-24	A1
Runtime: V1.10.002 PROM: 1.0.4	4-Oct-2012	DGS-1100-05	A1
Runtime: V1.10.007 PROM: 1.0.11		DGS-1100-08	A1
Runtime: V1.10.008 PROM: 1.0.2		DGS-1100-16 DGS-1100-24	A1
Runtime: V1.10.005 PROM: 1.0.2	2-Jun-2012	DGS-1100-16 DGS-1100-24	A1
Runtime: V1.00.012 PROM: 1.0.2		DGS-1100-16 DGS-1100-24	A1

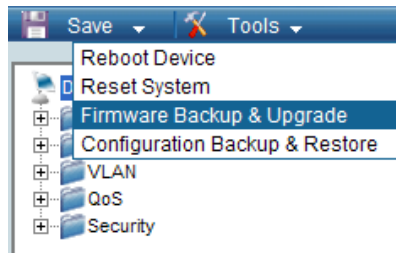
Runtime:V1.10.002 PROM:1.0.8		DGS-1100-08	A1
v1.00.009	27-Dec-2010	DGS-1100-16 DGS-1100-24	A1

Upgrade Instructions:

You can download the firmware from D-Link web site <http://tsd.dlink.com.tw>, and upgrade through web UI or SmartConsole Utility.

Upgrade using Web-UI

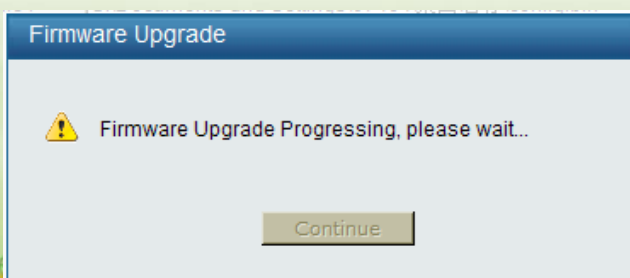
1. Connect a workstation installed with java SE runtime environment to any switch port of the device.
2. Open the web browser from the workstation and enter the IP address of the switch. The switch's default IP address is 10.90.90.90.
3. Enter administrator's password when prompted. The password is **admin** by default.
4. To update switch's firmware or configuration file, select **Tools > Firmware Backup & Upgrade** from the banner.



5. Click **Browse** to browse your inventories for a saved firmware file, and then click **Upgrade** after selecting the firmware file you want to restore.

A screenshot of the 'Firmware Backup & Upgrade' web page. The page has a title bar 'Firmware Backup & Upgrade'. Below the title, there are two sections. The first section is labeled 'Backup Firmware to file :'. It contains a text input field and a 'Backup' button. The second section is labeled 'Upgrade firmware from file :'. It contains a text input field, a 'Browse' button, and an 'Upgrade' button.

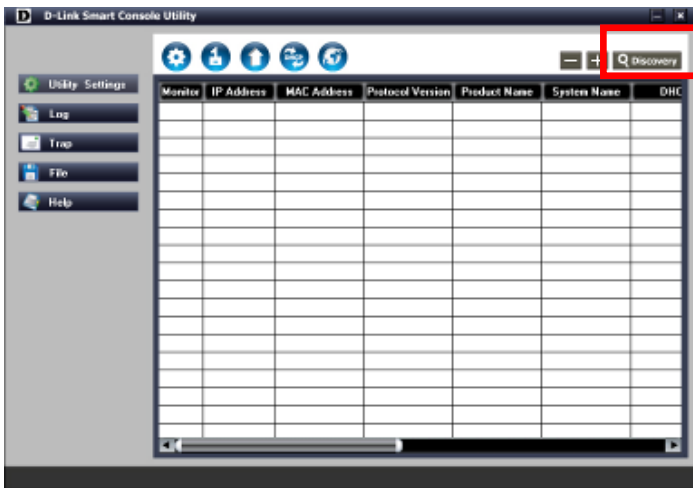
6. Wait until the "Firmware Upgrade Successful" message pops up and login again after device boots up.



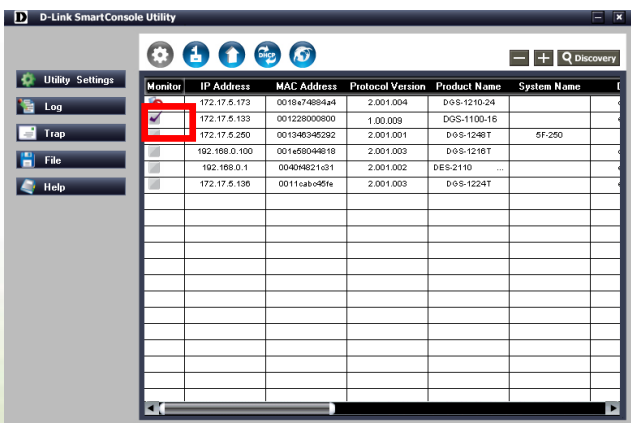


Upgrade using SmartConsole Utility

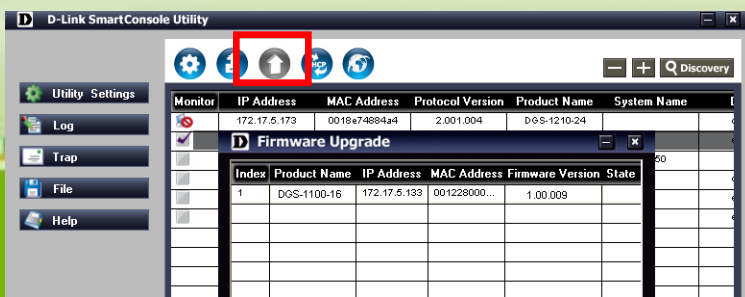
1. Connect a workstation installed with java SE runtime environment to any switch port of the device
2. Execute SmartConsole Utility and click the "Discovery" button to search switches.



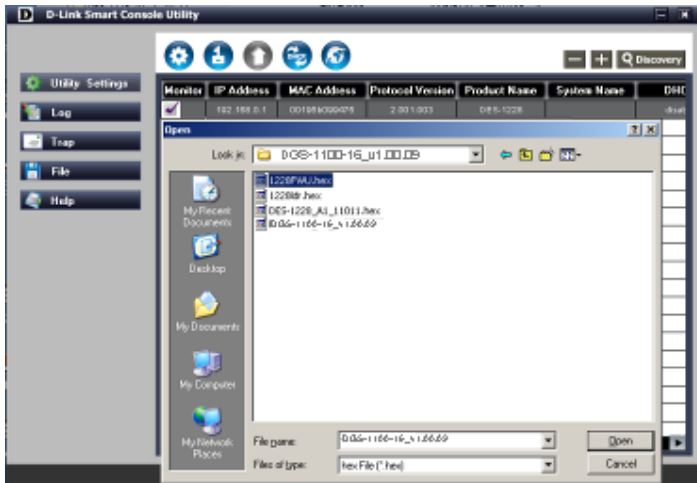
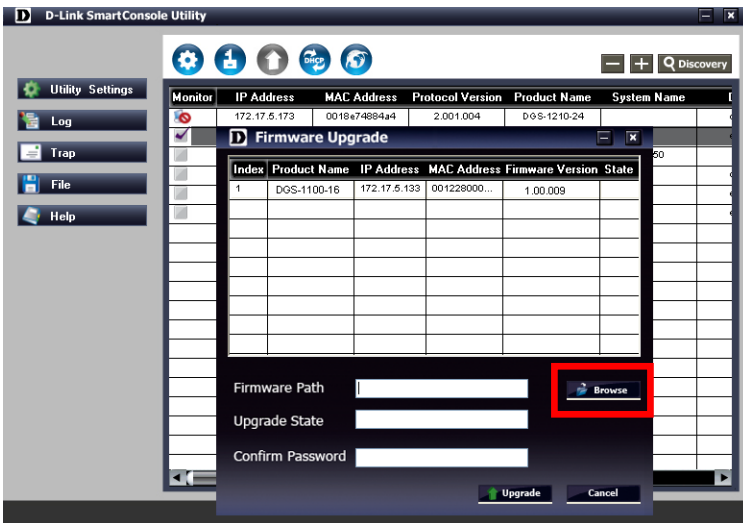
3. Single-click on the icon of Monitor column to select the target switch.



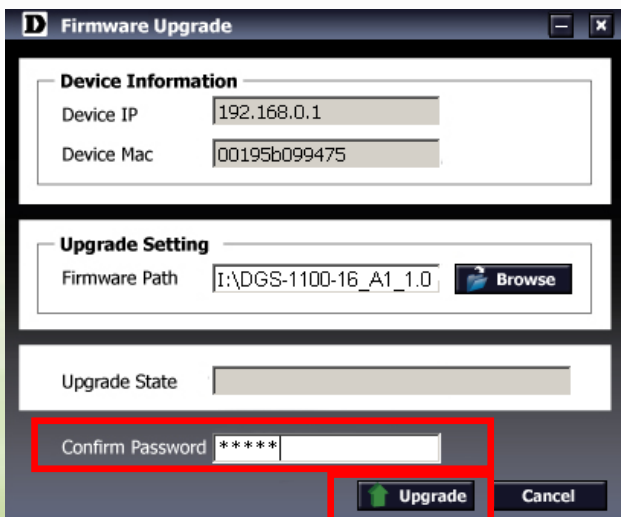
4. Click Firmware Upgrade button



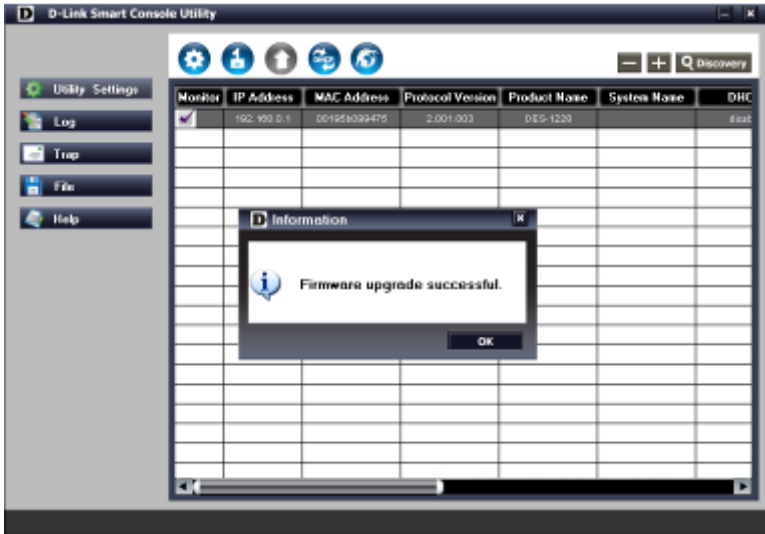
5. Click Browse button and select the firmware file (Model name_HW ver._FW ver. .hex) on your local hard drive.



6. Enter password and click "Upgrade" button to start firmware upgrade. The default password is "admin".



7. Once the message popped up, click "OK" button to complete the firmware upgrade



New Features:

DGS-1100-05:

Firmware Version	New Features
V1.10.014	N/A
V1.10.011	<ol style="list-style-type: none"> 1. Support including or excluding password option when backing up the configuration file 2. Add MAC OUI B0:C5:54:00:00:00~ B0:C5:54:7F:FF:FF to Surveillance VLAN function 3. Support Apple Take 4. Support to enable or disable 802.3az EEE (Energy-Efficient Ethernet) 5. Support DHCP "retry time" parameter
V1.10.002	First Release

DGS-1100-08:

Firmware Version	New Features
1.10.033	N/A
V1.10.030	<ol style="list-style-type: none"> 1. Support including or excluding password option when backing up configuration file 2. Add MAC OUI B0:C5:54:00:00:00~ B0:C5:54:7F:FF:FF to Surveillance VLAN function 3. Support Apple Take 4. Support to enable or disable 802.3az EEE (Energy-Efficient Ethernet) 5. Support DHCP "retry time" parameter 6. Support showing multicast entry table 7. Support DSCP priority parameter setting
V1.10.011	NA
V1.10.007	<ol style="list-style-type: none"> 1. SmartConsole Utility v3.0 2. Jumbo Frame

V1.10.002	First Release
-----------	---------------

DGS-1100-08P:

Firmware Version	New Features
1.10.021	N/A
V1.10.017	<ol style="list-style-type: none"> Support including or excluding password option when backing up configuration file Add MAC OUI B0:C5:54:00:00:00~ B0:C5:54:7F:FF:FF to Surveillance VLAN function Support Apple Take Support to enable or disable 802.3az EEE (Energy-Efficient Ethernet) Support DHCP "retry time" parameter
V1.10.004	First Release

DGS-1100-16/24:

Firmware Version	New Features
V1.10.016	<ol style="list-style-type: none"> Support including or excluding password option when backing up configuration file Add MAC OUI B0:C5:54:00:00:00~ B0:C5:54:7F:FF:FF to Surveillance VLAN function
V1.10.011	NA
V1.10.008	<ol style="list-style-type: none"> SmartConsole Utility v3.0
V1.10.005	<ol style="list-style-type: none"> Management VLAN Voice VLAN
V1.00.009	First Release

Changes:

DGS-1100-05:

Firmware Version	Changes
V1.10.014	N/A
V1.10.011	N/A
V1.10.004	Disable UART signal in boot loader to avoid H/W interference in booting procedure
V1.10.002	First Release

DGS-1100-08:

Firmware Version	Changes
1.10.033	N/A
V1.10.030	N/A

V1.10.011	Forbid to restore the configuration file from certain scenarios. For details, refer to table at "Know Issues" part.
V1.10.007	Move Menu Items "Surveillance VLAN" and "Voice VLAN" to Menu "VLAN".
V1.10.002	First Release

DGS-1100-08P:

Firmware Version	Changes
1.10.021	N/A
V1.10.017	N/A
V1.10.005	Disable UART signal in boot loader to avoid H/W interference in booting procedure
V1.10.004	First Release

DGS-1100-16/24:

Firmware Version	Changes
V1.10.016	N/A
V1.10.011	Forbid to downgrade FW to previous version. For details, refer to table at "Know Issues" part.
V1.10.008	Move Menu Items "Surveillance VLAN" and "Voice VLAN" to Menu "VLAN".
V1.10.005 or later version	Forbid to restore the configuration file from certain scenarios. For details, refer to table at "Know Issues" part.
V1.10.002	First Release

Problem Fixed:

DGS-1100-05:

Firmware Version	Problems Fixed
V1.10.014	1. Fixed issue that the switch auto reboots and reset configuration (DI20150313000003)
V1.10.011	1. Fix the issue that switch can't auto negotiate with ASUS NX1101 NIC (chipset is IC plus IP1000A LF) on 1G speed (DRU20130704000001)
V1.10.002	First Release

DGS-1100-08:

Firmware Version	Problems Fixed
1.10.033	1. Fixed issue that the switch auto reboots and reset configuration (DI20150313000003)

V1.10.030	<ol style="list-style-type: none"> 1. Fix the issue that system uptime is incorrect after power-on over 6 hours (DRU20130712000005). 2. Fix the issue that switch does not turn off the port and show port's status as "Disable" when the port is looped and been disabled (DRU20130712000003). 3. Fix the issue that switch can't auto negotiate with ASUS NX1101 NIC (chipset is IC plus IP1000A LF) on 1G speed (DRU20130704000001) . 4. Fix the issue that switch does not send DHCP request packet to renew its DHCP lease time after the DHCP lease time has expired (DUSA20131126000002). 5. When switch enabled DHCP and upgraded specific firmware version, the switch cannot send DHCP discovery packet to DHCP server, and it cannot be accessed by default IP address or by pressing reset button, either (DUSA20131128000001). 6. When switch enabled DHCP client and configured VLAN groups; The switch cannot be accessed, nor be reset by reset button after rebooting switch. (DUSA20140314000003) 7. Fix the issue that multiple switches will generate the same transaction IDs in DHCP Discovery packet (DUSA20131210000001)
V1.10.011	<ol style="list-style-type: none"> 1. Fix the issue that IGMP group from which all members have left is not removed (DRU20130110000002) 2. Fix the issue that IGMP control packet is only processed in Management VLAN when Management VLAN is enabled (DRU20130109000004)
V1.10.007	<ol style="list-style-type: none"> 1. When restoring configuration via another DGS-1100-08's configuration file, the device S/N number and hardware version in WebGUI will be overwritten or disappear (DI20130108000017)
V1.10.002	First Release

DGS-1100-08P:

Firmware Version	Problems Fixed
1.10.021	<ol style="list-style-type: none"> 1. Fixed issue that the switch auto reboots and reset configuration (DI20150313000003)
V1.10.017	<ol style="list-style-type: none"> 1. Fix the issue that switch can't auto negotiate with ASUS NX1101 NIC (chipset is IC plus IP1000A LF) on 1G speed (DRU20130704000001) 2. Fix the issue that switch does not send DHCP request packet to renew its DHCP lease time after the DHCP lease time has expired (DUSA20131126000002) 3. 5. When switch enabled DHCP and upgraded specific firmware version, the switch cannot send DHCP discovery packet to DHCP server, and it cannot be accessed by default IP address or by pressing reset button, either (DUSA20131128000001) 4. When switch enabled DHCP client and configured VLAN groups; The switch cannot be accessed, nor be reset by reset button after rebooting switch. (DUSA20140314000003) 5. Fix the issue that multiple switches will generate the same transactions IDs in DHCPDISCOVER packet (DUSA20131210000001)
V1.10.005	Disable UART signal in boot loader to avoid H/W interference in booting procedure
V1.10.004	First Release

DGS-1100-16/24:

Firmware Version	Problems Fixed
V1.10.016	1. When switch gateway is configured, switch doesn't send a ARP request to gateway (DI20130705000005) 2. When enabling Management VLAN and IGMP Snooping simultaneously, IGMP Snooping only works in Management VLAN (DRU20130807000004)
V1.10.011	Fix the issue that when firmware upgrades from V1.00.009 and V1.00.012. (DI20130204000009) , the configuration will lost.
V1.00.012	Fix the configuration lost when FW upgrades from V1.00.009 to V1.10.005. Note: This Firmware will NOT cut in to production.
V1.00.009	First Release

* D-Link tracking number is enclosed in ()

Known Issues:

Firmware Version	Issues	Workaround
V1.10.005/V1.10.008 (For DGS-1100-16/24)	If V1.10.005/V1.10.008 downgrade to V1.00.009/V1.00.012 and then upgrade to V1.10.005/V1.10.008 again, all ports of the switch can't link up.	Press on reset button and hold 3 seconds at least to factory reset the switch.
V1.10.005 (For DGS-1100-16/24)	When firmware V1.00.009 is upgraded to V1.10.005, the configuration and Serial Number will be lost.	Firmware V1.00.009 should be upgraded to V1.00.012 first, and then upgraded to V1.10.005. V1.00.012 can be downloaded from http://tsd.dlink.com.tw/
V1.10.002 (For DGS-1100-08)	When restoring configuration via another DGS-1100-08's configuration file, the device S/N number and hardware version in WebGUI will be overwritten or disappear.	Upgrade to V1.10.007
V1.00.009 (For DGS-1100-16/24)	First Release	

DGS-1100-08 copy configuration and F/W upgrade/downgrade Issue:

Copy Configuration Copy From	Restore To	1.10.002	1.10.007	1.10.011 or later version
V1.10.002	Result	The SN will be overwritten.*	A part of configurations will be factory reset.**	Forbid to restore
V1.10.007	Result	The SN and a part of configurations will be error.***	Normal	Forbid to restore
V1.10.011 or later version	Result	Forbid to restore	Forbid to restore	Normal

F/W Upgrade or Downgrade From	To	1.10.002	1.10.007	1.10.011 or later version
V1.10.002	Result	Normal	A part of configurations will be factory reset.**	Normal
V1.10.007	Result	The SN and a part of configurations will be error.***	Normal	Normal
V1.10.011 or later version	Result	The SN, HW version and a part of configurations will be error.****	Normal	Normal

Note :

* :The SN only can be recovered through RMA(Return Material Authorization), and the value of SN does not affect any functionality of the switch. **Suggest upgrade F/W to V1.10.011 first and then backup&restore configuration.**

** :The part of configurations include System Information, Trap Settings for SmartConsole, Surveillance VLAN and Voice Vlan will be factory reset. It should be set again by user. **Suggest upgrade F/W to V1.10.011 first and then backup&restore configuration.**

*** :The SN only can be recovered through RMA(Return Material Authorization), and the value of SN does not affect any functionality of the switch. The part of configurations include System Information, Trap Settings for SmartConsole, Surveillance VLAN and Voice Vlan will be factory reset. It should be set again by user. **Suggest NOT to downgrade or backup configurations to old F/W.**

**** :The SN and HW version will be recovered after upgrade F/W to V1.10.011 or later version but configurations need to set again. **Suggest NOT to downgrade or backup configurations to old F/W.**

DGS-1100-16/24 copy configuration and F/W upgrade/downgrade Issue:

Copy Configuration Backup From	Restore To	1.00.009	1.00.012	1.10.005	1.10.008	1.10.011 or later version
V1.00.009	Result	Normal	Normal	Forbid to restore	Forbid to restore	Forbid to restore
V1.00.012	Result	Normal	Normal	Forbid to restore	Forbid to restore	Forbid to restore
V1.10.005	Result	Forbid to restore	Forbid to restore	Normal	Normal	Normal
V1.10.008	Result	Forbid to restore	Forbid to restore	Normal	Normal	Normal
V1.10.011 or later version	Result	Forbid to restore	Forbid to restore	Normal	Normal	Normal

F/W Upgrade or Downgrade From	To	1.00.009	1.00.012	1.10.005	1.10.008	1.10.011 or later version
V1.00.009	Result	Normal	Normal	The SN and configuration	The SN and configuration will	Normal

				will be factory reset.*	be factory reset.*	
V1.00.012	Result	Normal	Normal	Normal	The SN and configuration will be factory reset.*	Normal
V1.10.005	Result	The SN and configuration will be factory reset.**	Normal	Normal	Normal	Normal
V1.10.008	Result	The SN and configuration will be factory reset.**	The SN and configuration will be factory reset.**	Normal	Normal	Normal
V1.10.011 or later version	Result	Forbid	Forbid	Forbid	Forbid	Normal

Note :

* : When firmware upgrade in this situation, the SN and configuration will be factory reset.

Suggest upgrade F/W to V1.10.011 or Later version directly.

** : When firmware downgrade in this situation, the SN and configuration will be factory reset.

Suggest NOT to downgrade.

Related Documentation:

- DGS-1100 Series User Manual
- DGS-1100 Series Getting Started Guide