



<b>DGS-1100V2 FW Ver</b>	1.00.010
<b>DGS-1100V2 Boot Ver</b>	1.11
<b>Published :</b>	Dec. 10, 2019

The release notes include important information about D-Link switch firmware revisions. Please follow below steps to find version information:

- If you are installing a new switch, please check the hardware version on the device label. Make sure that your switch meets the system requirement of this firmware version. Please Refer to [Revision History and System Requirement](#) for firmware and hardware matrix.
- If the switch is powered on, you can check the hardware version by checking the device information page on the web graphic user interface.

If you plan to upgrade firmware, please refer to the [Upgrade Instructions](#) for the correct firmware upgrade procedure.

For detailed product information, please refer to [Related Documentation](#).

You can also download the switch firmware and technical documentation from <http://tsd.dlink.com.tw>.

### Content:

Revision History and System Requirement: .....	2
Upgrade Instructions: .....	2
Upgrade using Web-UI.....	2
Upgrade using D-Link Network Assistant Chrome Edition .....	4
New Features:.....	6
Changes of MIB:.....	6
Problem Fixed: .....	6
Known Issues: .....	6
Related Documentation: .....	6

## Revision History and System Requirement:

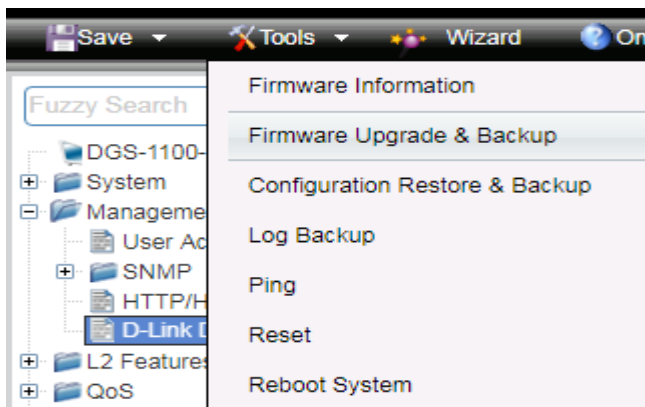
Firmware Version	Date	Model	Hardware Version
1.00.010	2019/12/9	DGS-1100-16V2 DGS-1100-24V2 DGS-1100-24PV2	A1

## Upgrade Instructions:

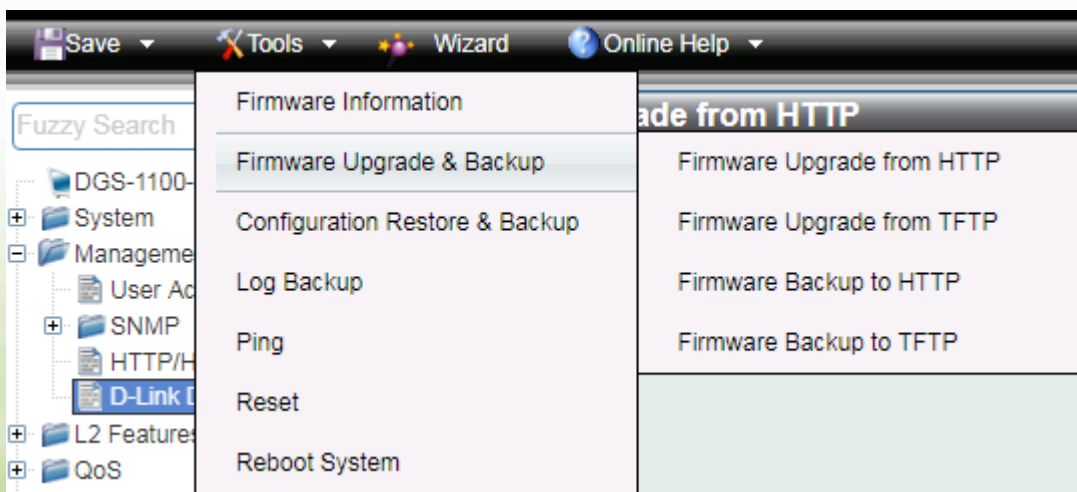
You can download the firmware from D-Link web site <http://tsd.dlink.com.tw>, and upgrade through Web UI or D-Link Network Assistant Utility.

### Upgrade using Web-UI

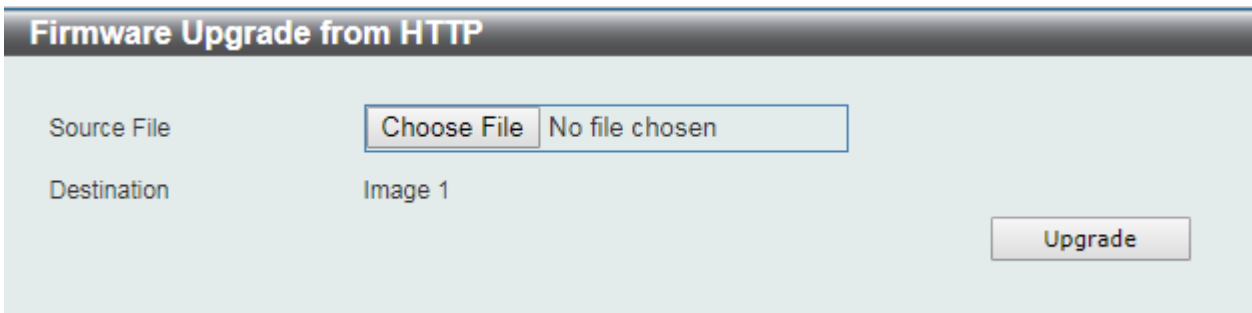
1. Connect a workstation installed with java SE runtime environment to any switch port of the device.
2. Open the web browser from the workstation and enter the IP address of the switch. The switch's default IP address is 10.90.90.90.
3. Enter administrator's password when prompted. The password is **admin** by default.
4. To update switch's firmware or configuration file, select **Tools > Firmware Upgrade & Backup** from the banner, you can choose HTTP or TFTP upgrade.



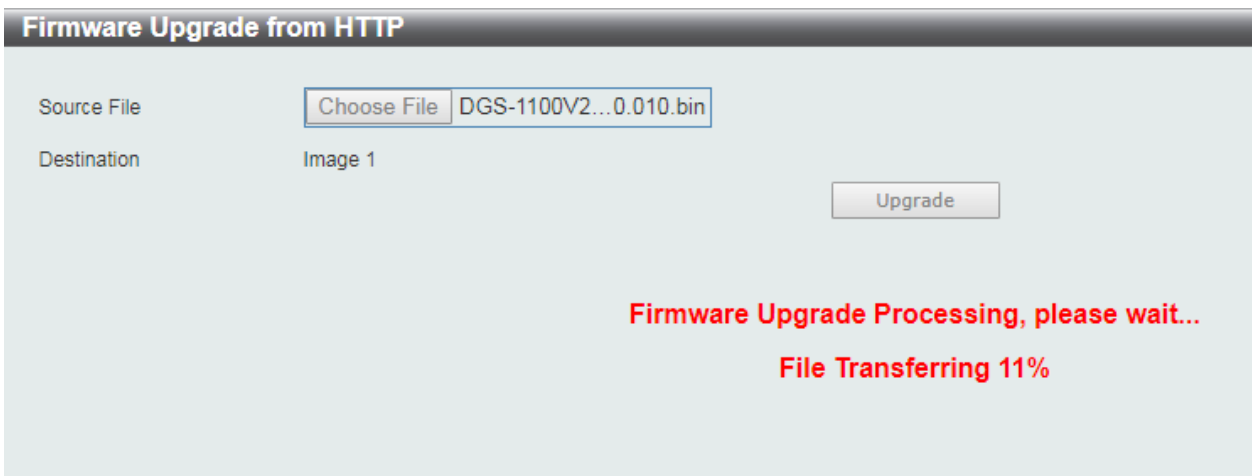
5. Click **Firmware Upgrade from HTTP**



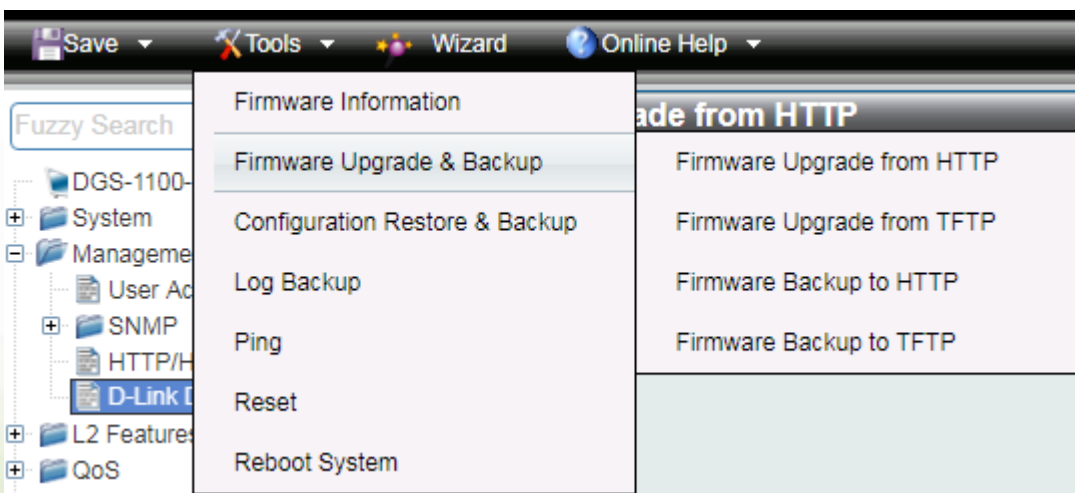
- Click **Chose File** to browse your inventories for a saved firmware file, and then click **Upgrade** after selecting the firmware file you want to restore



- Wait until the "Firmware Upgrade Processing" message disappear and login again after device boots up

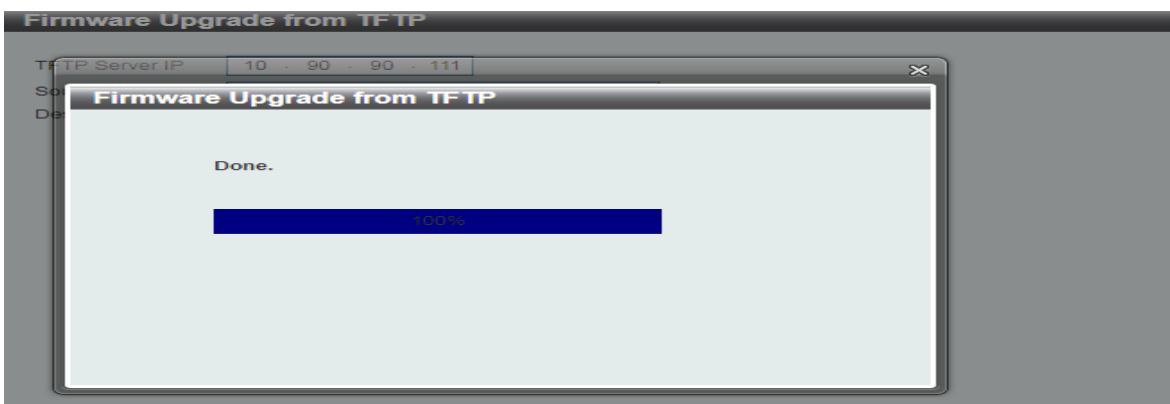


- Click **Firmware Upgrade from TFTP**



- Fill in **the TFTP server IP** and **upgrade file name**, and then click **Upgrade** after selecting the firmware file you want to restore

- Wait until the "Done" message appear and login again after device boots up



### Upgrade using D-Link Network Assistant Chrome Edition

- Connect a workstation installed with java SE runtime environment to any switch port of the device
- Execute D-Link Network Assistant Chrome Edition

Type / Status	Auth.	System Name	IP Address	MAC	Model	SNMP	FW Ver.	SN	System Time	IP Mode	HW Ver.	Protocol Ver.
D-Link DAP-2680			192.166.13.107	40-9b-cd-0b-3e-f0	DAP-2680	Off	v2.00	-	1970/02/07 13:58:29	Static	rev A1	DDP V5
SWITCH			10.90.90.90	00-e0-53-17-ee-da	DGS-1100-24V2	Off	Ver1.00.010	123456789	2000/01/01 00:07:40	Static	A1	DDP V2.0.27
dap2680			192.168.0.50	184-76-31-83-70	DAP-2680	Off	v2.00	-	1970/01/19 07:13:34	DHCP	rev A1	DDP V5

- Click Refresh button to search target switch

Type / Status	Auth.	System Name	IP Address	MAC	Model	SNMP	FW Ver.	SN	System Time	IP Mode	HW Ver.	Protocol Ver.
D-Link DAP-2680			192.166.13.107	40-9b-cd-0b-3e-f0	DAP-2680	Off	v2.00	-	1970/02/07 13:58:29	Static	rev A1	DDP V5
SWITCH			10.90.90.90	00-e0-53-17-ee-da	DGS-1100-24V2	Off	Ver1.00.010	123456789	2000/01/01 00:07:40	Static	A1	DDP V2.0.27
dap2680			192.168.0.50	184-76-31-83-70	DAP-2680	Off	v2.00	-	1970/01/19 07:13:34	DHCP	rev A1	DDP V5

4. Single click the icon of the column to choose the target switch

Type / Status	Auth.	System Name	IP Address	MAC	Model	SNMP	FW Ver.	SN	System Time	IP Mode	HW Ver.	Protocol Ver.
<input checked="" type="checkbox"/>		SWITCH	10.90.90.90	00-e0-53-17-ee-da	DGS-1100-24V2	<input type="checkbox"/>	Ver1.00.010	123456789	2000/01/01 00:03:13	Static	A1	DDP V2 0.27

5. Click Firmware Upgrade button

Type / Status	Auth.	System Name	IP Address	MAC	Model	SNMP	FW Ver.	SN	System Time	IP Mode	HW Ver.	Protocol Ver.
<input checked="" type="checkbox"/>		SWITCH	10.90.90.90	00-e0-53-17-ee-da	DGS-1100-24V2	<input type="checkbox"/>	Ver1.00.010	123456789				
<input type="checkbox"/>		D-Link DAP-2680	192.166.13.107	40-9b-cd-0b-3e-f0	DAP-2680							

6. Click Browse button and select the firmware file on your local hard drive.

Upgrade firmware (10.90.90.90) ✕

Current firmware version

Ver1.00.010

Update firmware using a local file

**Drag & drop**  
firmware file here, or [browse](#)

7. Click “Upgrade now” button to start firmware upgrade.

Upgrade firmware (10.90.90.90) ✕

Current firmware version

Ver1.00.010

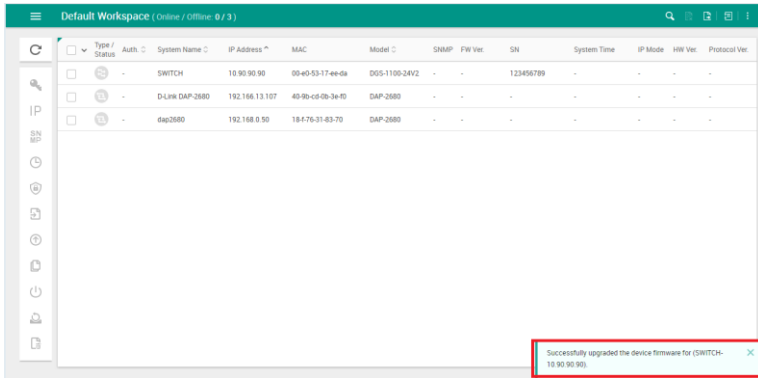
Update firmware using a local file

Firmware file DGS-1100V2\_Series\_FW ✕

\_Ver1.00.010.bin

Cancel
Upgrade now

8. Once the message changed to success, the firmware upgrade is complete



## New Features:

### DGS-1100-16V2/24V2/24PV2:

Firmware Version	New Features
V1.00.010	First Release

## Changes of MIB:

### DGS-1100-16V2/24V2/24PV2:

Firmware Version	MIB File	New Features
V1.00.010	First Release	

## Problem Fixed:

### DGS-1100-16V2/24V2/24PV2:

Firmware Version	Problems Fixed
V1.00.010	First Release

\* D-Link tracking number is enclosed in ()

## Known Issues:

### DGS-1100-16V2/24V2/24PV2:

Firmware Version	Issues	Workaround
V1.00.010	None	

## Related Documentation:

- DGS-1100-16V2/24V2/24PV2 A1 User Manual
- Getting Started Guide