



DGS-1100V2 FW Ver	2.00.003
DGS-1100V2 Boot Ver	1.11
Published :	July 1, 2020

The release notes include important information about D-Link switch firmware revisions. Please follow below steps to find version information:

- If you are installing a new switch, please check the hardware version on the device label. Make sure that your switch meets the system requirement of this firmware version. Please Refer to [Revision History and System Requirement](#) for firmware and hardware matrix.
- If the switch is powered on, you can check the hardware version by checking the device information page on the web graphic user interface.

If you plan to upgrade firmware, please refer to the [Upgrade Instructions](#) for the correct firmware upgrade procedure.

For detailed product information, please refer to [Related Documentation](#).

You can also download the switch firmware and technical documentation from <http://tsd.dlink.com.tw>.

Content:

Revision History and System Requirement:	2
Upgrade Instructions:	2
Upgrade using Web-UI.....	2
Upgrade using D-Link Network Assistant Chrome Edition	4
New Features:.....	6
Changes of MIB:.....	6
Problem Fixed:	7
Known Issues:	7
Related Documentation:	7

Revision History and System Requirement:

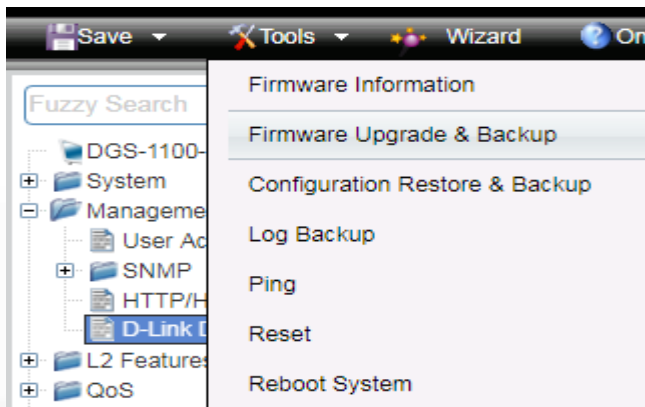
Firmware Version	Date	Model	Hardware Version
1.00.010	2019/12/9	DGS-1100-16V2 DGS-1100-24V2 DGS-1100-24PV2	A1
2.20.003	2020/7/1	DGS-1100-16V2 DGS-1100-24V2 DGS-1100-24PV2 DGS-1100-10MPV2 DGS-1100-10MPPV2 DGS-1100-26MPV2 DGS-1100-26MPPV2 DGS-1100-18PV2	A1

Upgrade Instructions:

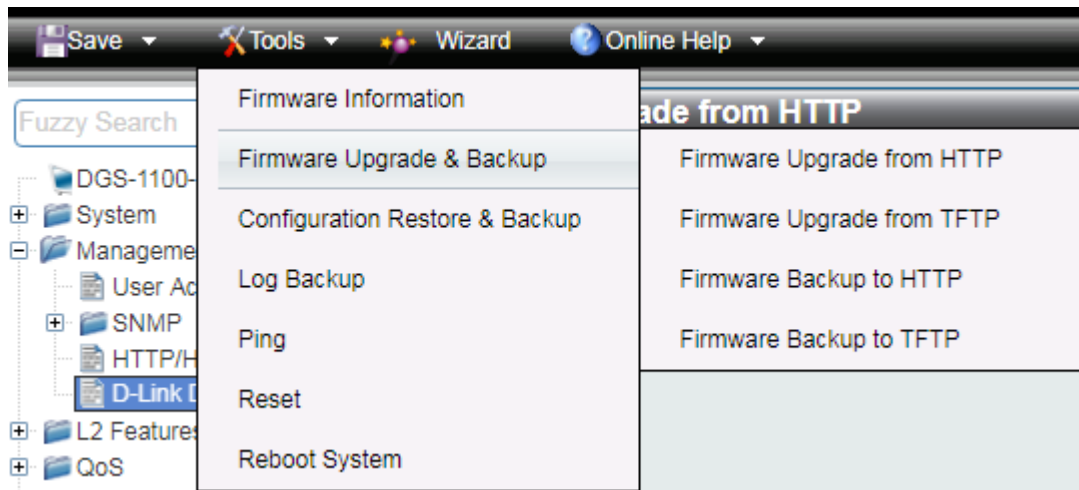
You can download the firmware from D-Link web site <http://tsd.dlink.com.tw>, and upgrade through Web UI or D-Link Network Assistant Utility.

Upgrade using Web-UI

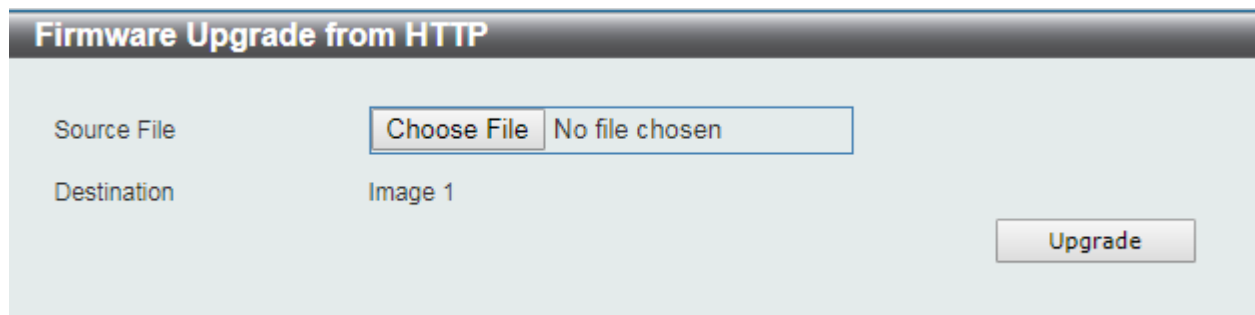
1. Connect a workstation installed with java SE runtime environment to any switch port of the device.
2. Open the web browser from the workstation and enter the IP address of the switch. The switch's default IP address is 10.90.90.90.
3. Enter administrator's password when prompted. The password is **admin** by default.
4. To update switch's firmware or configuration file, select **Tools > Firmware Upgrade & Backup** from the banner, you can choose HTTP or TFTP upgrade.



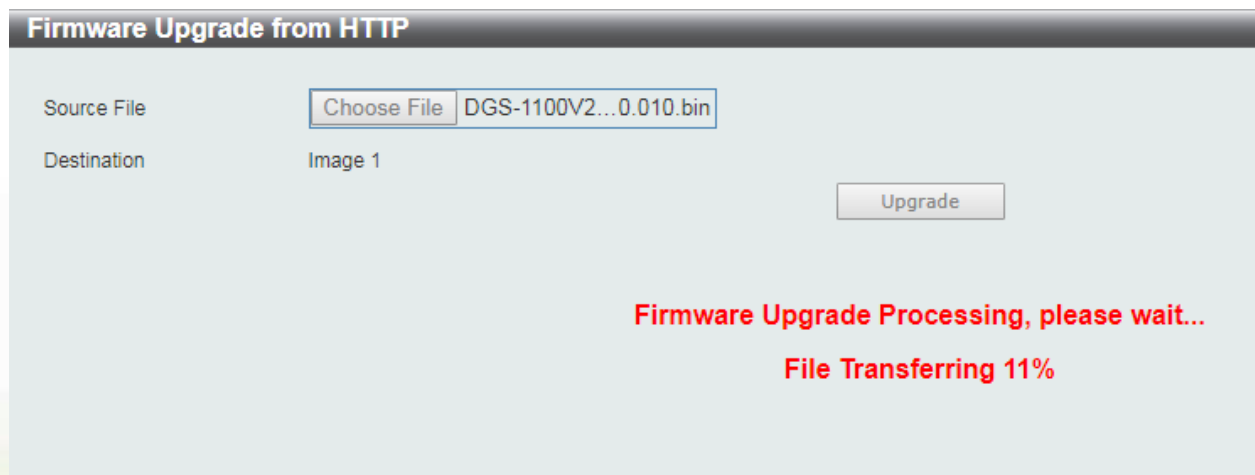
5. Click **Firmware Upgrade from HTTP**



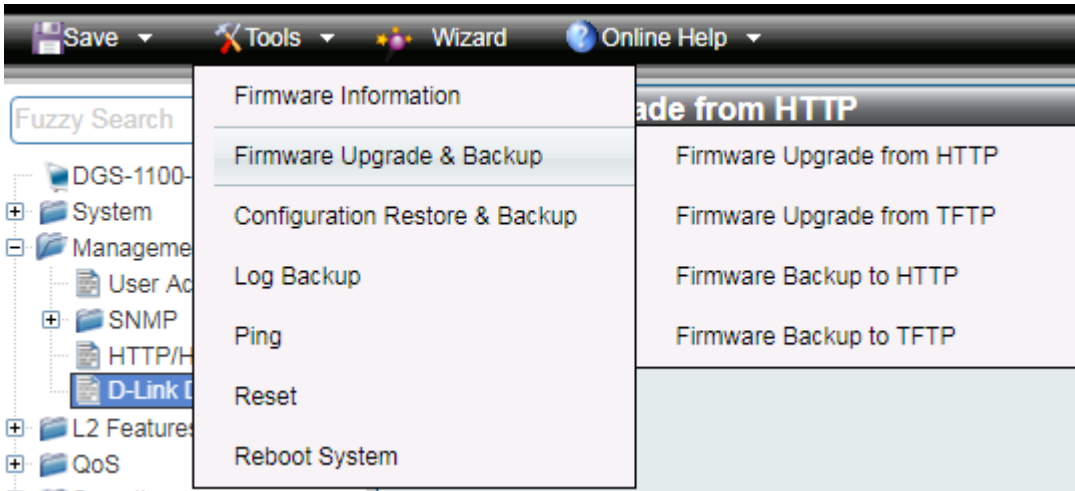
- Click **Chose File** to browse your inventories for a saved firmware file, and then click **Upgrade** after selecting the firmware file you want to restore



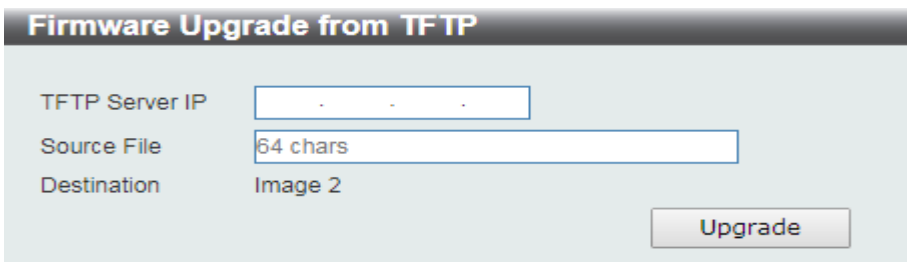
- Wait until the "Firmware Upgrade Processing" message disappear and login again after device boots up



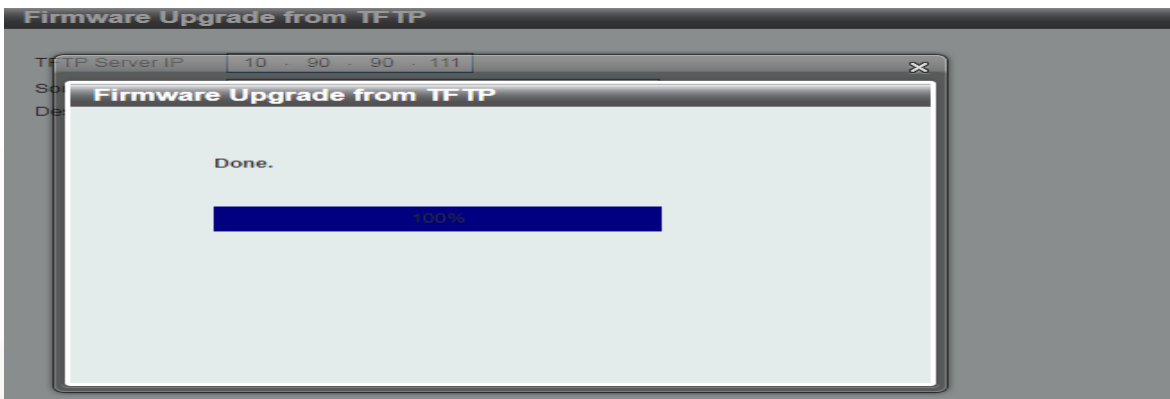
- Click **Firmware Upgrade from TFTP**



- Fill in **the TFTP server IP** and **upgrade file name**, and then click **Upgrade** after selecting the firmware file you want to restore



- Wait until the "Done" message appear and login again after device boots up



Upgrade using D-Link Network Assistant Chrome Edition

- Connect a workstation installed with java SE runtime environment to any switch port of the device
- Execute D-Link Network Assistant Chrome Edition

Default Workspace (Online / Offline: 3 / 0)

Type / Status	Auth.	System Name	IP Address	MAC	Model	SNMP	FW Ver.	SN	System Time	IP Mode	HW Ver.	Protocol Ver.
D-Link DAP-2680			192.166.13.107	40-9b-cd-0b-3e-f0	DAP-2680	Off	v2.00	-	1970/02/07 13:58:29	Static	rev A1	DDP V5
SWITCH			10.90.90.90	00-e0-53-17-ee-da	DGS-1100-24V2	Off	Ver1.00.010	123456789	2000/01/01 00:07:40	Static	A1	DDP V2.0.27
dap2680			192.168.0.50	18-f7-31-83-70	DAP-2680	Off	v2.00	-	1970/01/19 07:13:34	DHCP	rev A1	DDP V5

3. Click Refresh button to search target switch

Default Workspace (Online / Offline: 3 / 0)

Type / Status	Auth.	System Name	IP Address	MAC	Model	SNMP	FW Ver.	SN	System Time	IP Mode	HW Ver.	Protocol Ver.
D-Link DAP-2680			192.166.13.107	40-9b-cd-0b-3e-f0	DAP-2680	Off	v2.00	-	1970/02/07 13:58:29	Static	rev A1	DDP V5
SWITCH			10.90.90.90	00-e0-53-17-ee-da	DGS-1100-24V2	Off	Ver1.00.010	123456789	2000/01/01 00:07:40	Static	A1	DDP V2.0.27
dap2680			192.168.0.50	18-f7-31-83-70	DAP-2680	Off	v2.00	-	1970/01/19 07:13:34	DHCP	rev A1	DDP V5

4. Single click the icon of the column to choose the target switch

Type / Status	Auth.	System Name	IP Address	MAC	Model	SNMP	FW Ver.	SN	System Time	IP Mode	HW Ver.	Protocol Ver.
<input checked="" type="checkbox"/>			10.90.90.90	00-e0-53-17-ee-da	DGS-1100-24V2	Off	Ver1.00.010	123456789	2000/01/01 00:03:13	Static	A1	DDP V2.0.27

5. Click Firmware Upgrade button

Type / Status	Auth.	System Name	IP Address	MAC	Model	SNMP	FW Ver.	SN	System Time	IP Mode	HW Ver.	Protocol Ver.
<input checked="" type="checkbox"/>			10.90.90.90	00-e0-53-17-ee-da	DGS-1100-24V2	Off	Ver1.00.010	123456789				
<input type="checkbox"/>			192.166.13.107	40-9b-cd-0b-3e-f0	DAP-2680	Off	v2.00	-				

6. Click Browse button and select the firmware file on your local hard drive.

Upgrade firmware (10.90.90.90) ✕

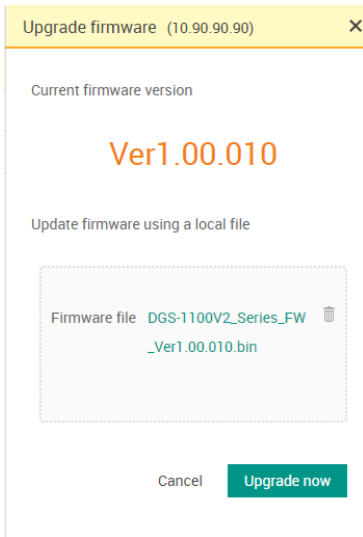
Current firmware version

Ver1.00.010

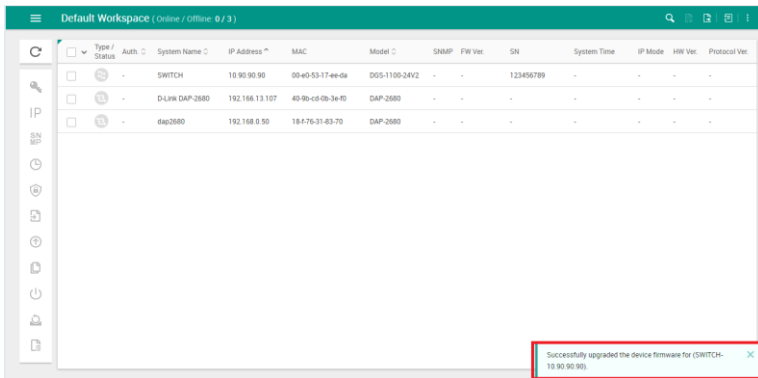
Update firmware using a local file

Drag & drop
firmware file here, or [browse](#)

7. Click "Upgrade now" button to start firmware upgrade.



8. Once the message changed to success, the firmware upgrade is complete



New Features:

DGS-1100-16V2/24V2/24PV2:

Firmware Version	New Features
V1.00.010	First Release
V2.00.003	<ol style="list-style-type: none"> Support new models: DGS-1100-10MPV2/10MPPV2/26MPV2/26MPPV2/18PV2 Support effective immediately of Configuration Restore

Changes of MIB:

DGS-1100-16V2/24V2/24PV2:

Firmware Version	MIB File	New Features
V1.00.010	First Release	
V2.00.003	DGS-1100-10MPV2-AX-MIB.MIB	New Model DGS-1100-10MPV2
	DGS-1100-10MPPV2-AX-MIB.MIB	New Model DGS-1100-10MPPV2

	DGS-1100-26MPV2-AX-MIB.MIB	New Model DGS-1100-26MPV2
	DGS-1100-26MPPV2-AX-MIB.MIB	New Model DGS-1100-26MPPV2
	DGS-1100-18PV2-AX-MIB.MIB	New Model DGS-1100-18PV2
	DLINKPV2-SYSTEM-FILE-MIB.MIB	Support to reboot/ save configuration

Problem Fixed:

DGS-1100-16V2/24V2/24PV2:

Firmware Version	Problems Fixed
V1.00.010	First Release
V2.00.003	<ol style="list-style-type: none"> Fixed that Time Range cannot over weekend when To week less than From week (DI20200128000003) Fixed that DGS-1100 PoE will keep PoE power delivering when rebooting via Web GUI (DI20200128000002) Fixed that DGS-1100 cannot forward Router designated port number (DI20200528000002) (DGC20200406000001)

* D-Link tracking number is enclosed in ()

Known Issues:

DGS-1100-16V2/24V2/24PV2:

Firmware Version	Issues	Workaround
V1.00.010	None	
V2.00.003	None	

Related Documentation:

- DGS-1100-16V2/24V2/24PV2/10MPV2/10MPPV2/26MPV2/26MPPV2/18PV2 A1 User Manual