



DGS-1100V2 FW Ver	3.00.017
DGS-1100V2 Boot Ver	1.11
Published :	Jun 1, 2022

The release notes include important information about D-Link switch firmware revisions. Please follow below steps to find version information:

- If you are installing a new switch, please check the hardware version on the device label. Make sure that your switch meets the system requirement of this firmware version. Please Refer to [Revision History and System Requirement](#) for firmware and hardware matrix.
- If the switch is powered on, you can check the hardware version by checking the device information page on the web graphic user interface.

If you plan to upgrade firmware, please refer to the [Upgrade Instructions](#) for the correct firmware upgrade procedure.

For detailed product information, please refer to [Related Documentation](#).

You can also download the switch firmware and technical documentation from <http://tsd.dlink.com.tw>.

Content:

Revision History and System Requirement:	2
Upgrade Instructions:	2
Upgrade using Web-UI.....	2
Upgrade using D-Link Network Assistant Chrome Edition	5
New Features:.....	7
Changes of MIB:.....	7
Problem Fixed:.....	8
Known Issues:	8
Related Documentation:	9

Revision History and System Requirement:

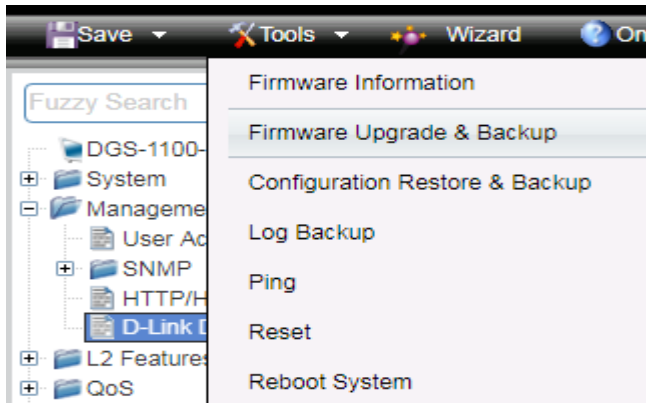
Firmware Version	Date	Model	Hardware Version
1.00.010	2019/12/9	DGS-1100-16V2 DGS-1100-24V2 DGS-1100-24PV2	A1
2.00.003	2020/7/1	DGS-1100-16V2 DGS-1100-24V2 DGS-1100-24PV2 DGS-1100-10MPV2 DGS-1100-10MPPV2 DGS-1100-26MPV2 DGS-1100-26MPPV2 DGS-1100-18PV2	A1
2.00.011	2021/10/22	DGS-1100-16V2 DGS-1100-24V2 DGS-1100-24PV2 DGS-1100-10MPV2 DGS-1100-10MPPV2 DGS-1100-26MPV2 DGS-1100-26MPPV2 DGS-1100-18PV2	A1, A2
2.00.011J	2021/10/29	DGS-1100-18PV2	J1
3.00.017	2022/6/1	DGS-1100-18PV2 DGS-1100-24PV2	A1, A2, A3

Upgrade Instructions:

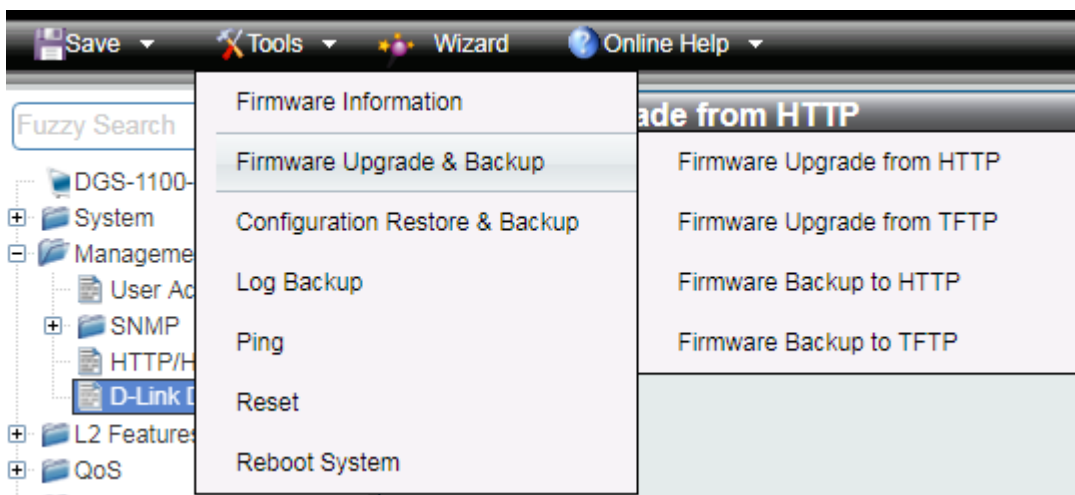
You can download the firmware from D-Link web site <http://tsd.dlink.com.tw>, and upgrade through Web UI or D-Link Network Assistant Utility.

Upgrade using Web-UI

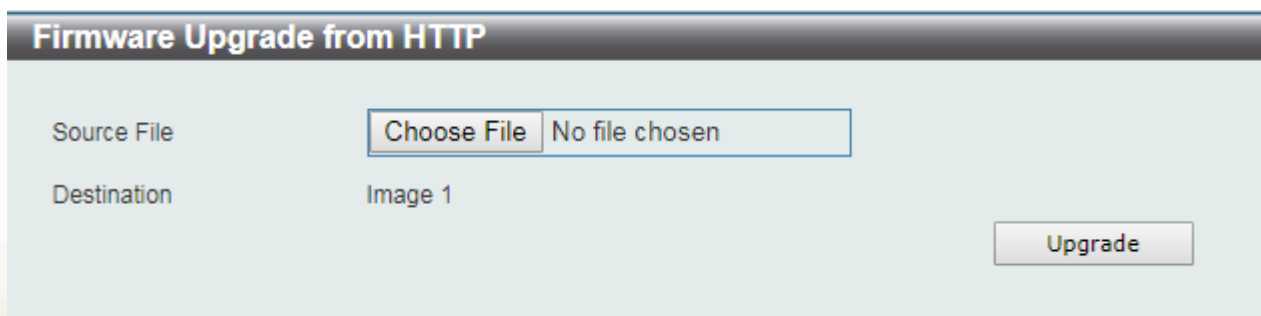
1. Connect a workstation installed with java SE runtime environment to any switch port of the device.
2. Open the web browser from the workstation and enter the IP address of the switch. The switch's default IP address is 10.90.90.90.
3. Enter administrator's password when prompted. The password is **admin** by default.
4. To update switch's firmware or configuration file, select **Tools > Firmware Upgrade & Backup** from the banner, you can choose HTTP or TFTP upgrade.



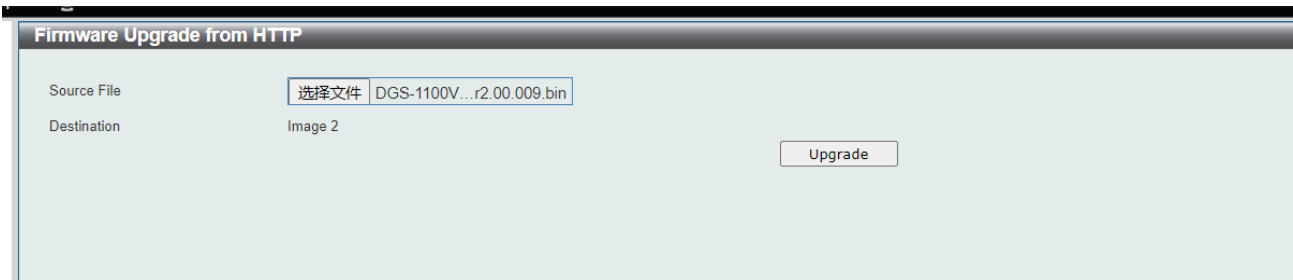
5. Click **Firmware Upgrade from HTTP**



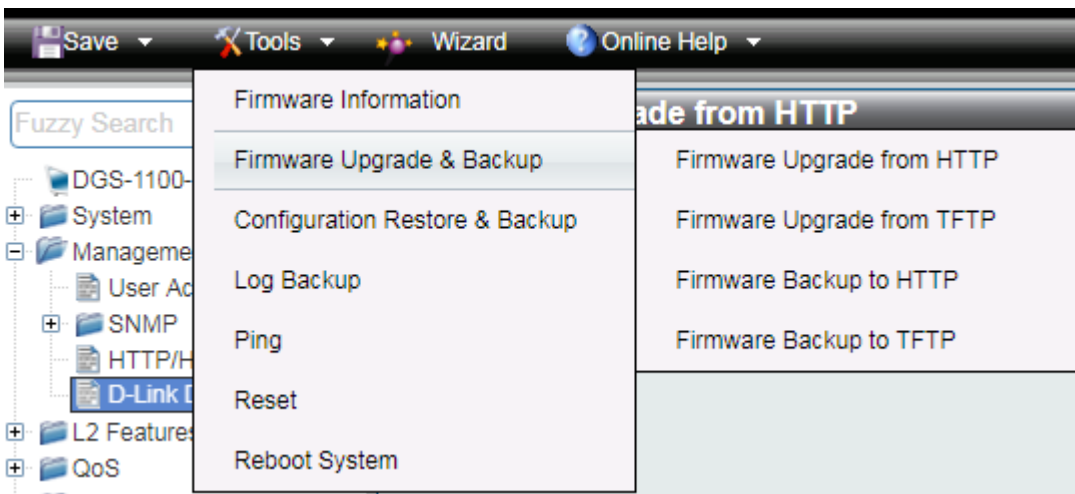
6. Click **Chose File** to browse your inventories for a saved firmware file, and then click **Upgrade** after selecting the firmware file you want to restore



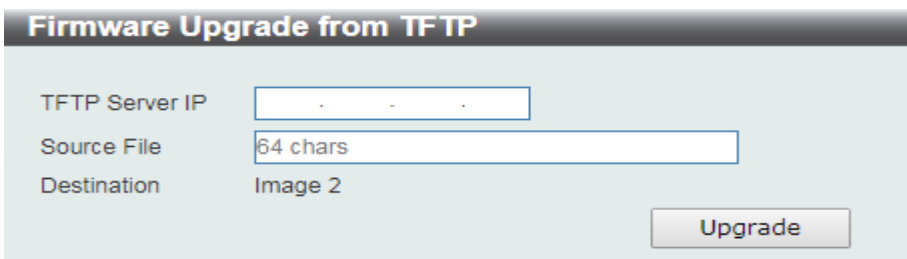
7. Wait until the "Firmware Upgrade Processing" message disappear and login again after device boots up



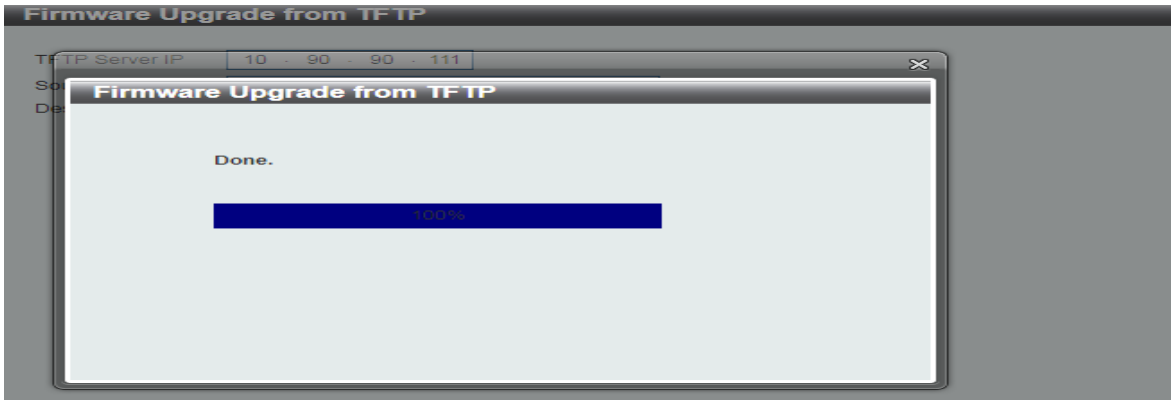
8. Click **Firmware Upgrade from TFTP**



9. Fill in **the TFTP server IP** and **upgrade file name**, and then click **Upgrade** after selecting the firmware file you want to restore

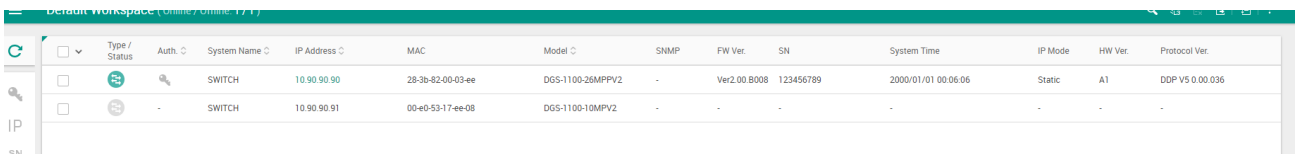


10. Wait until the "Done" message appear and login again after device boots up

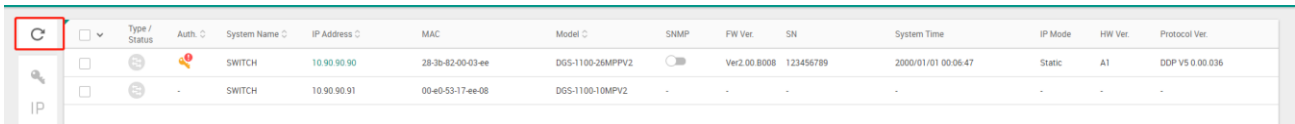


Upgrade using D-Link Network Assistant Chrome Edition

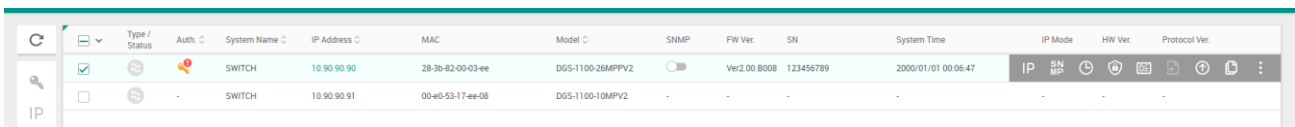
1. Connect a workstation installed with java SE runtime environment to any switch port of the device
2. Execute D-Link Network Assistant Chrome Edition



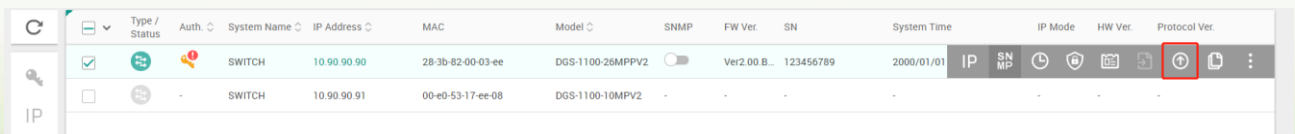
3. Click Refresh button to search target switch



4. Single click the icon of the column to choose the target switch



5. Click Firmware Upgrade button



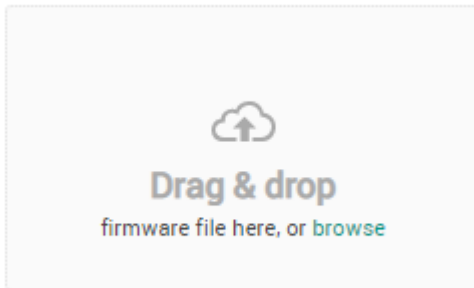
6. Click Browse button and select the firmware file on your local hard drive.

Upgrade firmware (10.90.90.90) X

Current firmware version

Ver2.00.B008

Update firmware using a local file



7. Click "Upgrade now" button to start firmware upgrade.

Upgrade firmware (10.90.90.90) X

Current firmware version

Ver2.00.B008

Update firmware using a local file



Cancel

Upgrade now

8. Once the message changed to success, the firmware upgrade is complete

Today

11:37 AM

Firmware upgrade
To version : DGS-1100V2_Series_FW_Ver2.00.009.bin

New Features:

DGS-1100-16V2/24V2/24PV2/10MPV2/10MPPV2/26MPV2/26MPPV2/18PV2:

Firmware Version	New Features
V1.00.010	First Release
V2.00.003	<ol style="list-style-type: none"> 1. Support new models: DGS-1100-10MPV2/10MPPV2/26MPV2/26MPPV2/18PV2 2. Support effective immediately of Configuration Restore
V2.00.011	<ol style="list-style-type: none"> 1. DGS-1100-16V2, 24V2, 24PV2, 18PV2, 26MPV2, 26MPPV2: change 2nd source PHY, Flash, DRAM. 2. DGS-1100-10MPV2, 10MPPV2: change 2nd source Flash, DRAM. 3. Upgrade Matrixssl version to 4.3.3
V2.00.011J	Only support DGS-1100-18PV2 H/W version J1
V3.00.017	DGS-1100-24PV2,18PV2: support 2 nd PoE RTL8238B module.

Changes of MIB:

DGS-1100-16V2/24V2/24PV2/10MPV2/10MPPV2/26MPV2/26MPPV2/18PV2:

Firmware Version	MIB File	New Features
V1.00.010	First Release	
V2.00.003	DGS-1100-10MPV2-AX-MIB.MIB	New Model DGS-1100-10MPV2
	DGS-1100-10MPPV2-AX-MIB.MIB	New Model DGS-1100-10MPPV2
	DGS-1100-26MPV2-AX-MIB.MIB	New Model DGS-1100-26MPV2
	DGS-1100-26MPPV2-AX-MIB.MIB	New Model DGS-1100-26MPPV2
	DGS-1100-18PV2-AX-MIB.MIB	New Model DGS-1100-18PV2
	DLINKPV2-SYSTEM-FILE-MIB.MIB	Support to reboot/ save configuration.

Problem Fixed:

DGS-1100-16V2/24V2/24PV2/10MPV2/10MPPV2/26MPV2/26MPPV2/18PV2:

Firmware Version	Problems Fixed
V1.00.010	First Release
V2.00.003	<ol style="list-style-type: none"> Fixed that Time Range cannot over weekend when To week less than From week (DI20200128000003) Fixed that DGS-1100 PoE will keep PoE power delivering when rebooting via Web GUI (DI20200128000002) Fixed that DGS-1100 cannot forward Router designated port number (DI20200528000002) (DGC20200406000001) Fixed that Restarting the switch on the GUI will not restart the POE module problem (HQ20200130000031)
V2.00.011	As DGS-1100 A1 uses firmware V1.00.010, when the switch is reboot, PoE power supply will not be interrupted, but in the case of firmware V2.00.011, in order to meet the requirements of case HQ20200130000031, PoE will be cut-off and re-started when the switch is rebooted.
V2.00.011J	1. Follow V2.00.011
V3.00.017	<ol style="list-style-type: none"> Fixed "Not respond after 12 hours." (DI20220308000005) Add mib oid of cpu and memory utilization (HQ20210924000008) Wizard configuration should save after reboot (HQ20211125000010) SNMP community configuration "-"character (HQ20210910000010) Remove the option field from the DHCP message (HQ20200731000002) Time range configuration problem (HQ20200130000031) Fixed the firmware V2.00.011 is installed on DGS-1100-10MPV2 and 10MPPV2 H/W A1, and displayed erroneous the H/W "A2" version on WEB-GUI.

* D-Link tracking number is enclosed in ()

Known Issues:

DGS-1100-16V2/24V2/24PV2/10MPV2/10MPPV2/26MPV2/26MPPV2/18PV2:

Firmware Version	Issues	Workaround
V1.00.010	None	
V2.00.003	None	
V2.00.010	None	
V2.00.011	<ol style="list-style-type: none"> Please note that as DGS-1100V2 A2 models cannot use Firmware V1.00.010, and the old Firmware cannot support the new PHY chipset. <ul style="list-style-type: none"> DGS-1100V2 A1: It can adopt any firmware version for upgrades or downgrades. DGS-1100V2 A2: It can only adopt the firmware 2.00.011, and cannot support any lower versions, so for instance, in A2, those with firmware 2.00.011 cannot be downgraded to version 1.00.xxx or 2.00.003 The Firmware 2.00.011 installed on DGS-1100-10MPV2 and 10MPPV2 H/W A1 version, 	The show "A2" error will be corrected in the V3.00.017.

	the H/W version was shown as A2 on WEB-GUI, but all functions are normal, while other DGS-1100V2 models do not have this problem.	
V2.00.011J	None	
V3.00.017	<p>1. Please note that as DGS-1100V2 A3 models cannot use Firmware V1.00.010~V2.00.011, and the old Firmware cannot support the new PoE module.</p> <ul style="list-style-type: none"> - DGS-1100V2 A1: It can adopt any firmware version for upgrades or downgrades. - DGS-1100V2 A2: It can only adopt the firmware 2.00.011, and cannot support any lower versions. - DGS-1100V2 A3: It can only adopt the firmware 3.00.017, and cannot support any lower versions, so for instance, in A3, those with firmware 3.00.017 cannot be downgraded to version 1.00.xxx or 2.00.xxx. <p>2. A fail appears in the Conformance sifos test report, IC manufacturer confirms, will not have a bad influence on the devices. (DBG22060360).</p> <p>3. After changing ports 2-4 as access mode, port 4 still exists in VLAN 2(DBG22070075).</p> <p>4. Not support MIB.</p>	Fixing in the V3.00.019.

Related Documentation:

- DGS-1100-16V2/24V2/24PV2/10MPV2/10MPPV2/26MPV2/26MPPV2/18PV2 User Manual