



DGS-1100-05 Firmware Version: 1.10.002
DGS-1100-05 PROM Code Version: 1.0.4
DGS-1100-08 Firmware Version: 1.10.007
DGS-1100-08 PROM Code Version: 1.0.11
DGS-1100-16/24 Firmware Version: 1.10.008
DGS-1100-16/24 PROM Code Version: 1.0.2
Published: Oct. 4, 2012

These release notes include important information about D-Link switch firmware revisions. Please verify that these release notes are correct for your switch:

- If you are installing a new switch, please check the hardware version on the device label; make sure that your switch meets the system requirement of this firmware version. Please refer to [Revision History and System Requirement](#) for detailed firmware and hardware matrix.
- If the switch is powered on, you can check the hardware version by checking the device information page on the web graphic user interface.
- If you plan to upgrade to the new firmware release, please refer to the [Upgrade Instructions](#) for the correct firmware upgrade procedure.

For more detailed information regarding our switch products, please refer to [Related Documentation](#).

You can also download the switch firmware and technical documentation from <http://tsd.dlink.com.tw>.

Content:

Revision History and System Requirement:	2
Upgrade Instructions:.....	2
Upgrade using Web-UI	2
Upgrade using SmartConsole Utility	3
New Features:	6
Problem Fixed:	6
Known Issues:	6
Related Documentation:	7

Revision History and System Requirement:

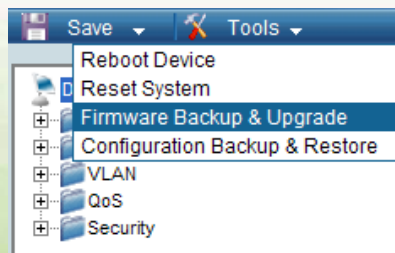
Firmware Version	Date	Model	Hardware Version
Runtime:V1.10.002 PROM:1.0.4	4-Oct-2012	DGS-1100-05	A1
Runtime:V1.10.007 PROM:1.0.11		DGS-1100-08	A1
Runtime:V1.10.008 PROM:1.0.2		DGS-1100-16 DGS-1100-24	A1
Runtime:V1.10.005 PROM:1.0.2	2-Jun-2012	DGS-1100-16 DGS-1100-24	A1
Runtime:V1.00.012 PROM:1.0.2		DGS-1100-16 DGS-1100-24	A1
Runtime:V1.10.002 PROM:1.0.8		DGS-1100-08	A1
v1.00.009	27-Dec-2010	DGS-1100-16 DGS-1100-24	A1

Upgrade Instructions:

You can download the firmware from D-Link web site <http://tsd.dlink.com.tw>, and upgrade through web UI or SmartConsole Utility.

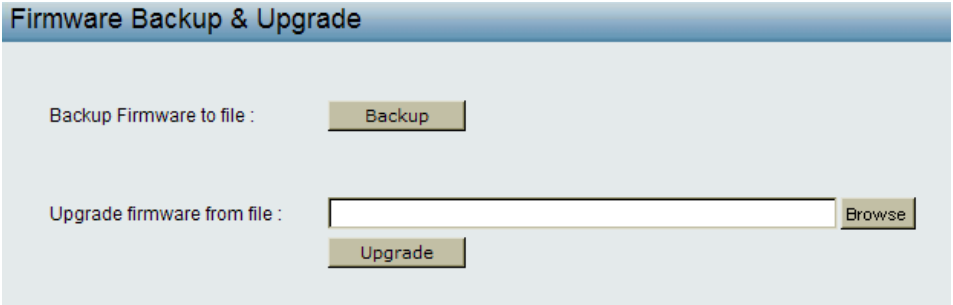
Upgrade using Web-UI

1. Connect a workstation installed with java SE runtime environment to any switch port of the device.
2. Open the web browser from the workstation and enter the IP address of the switch. The switch's default IP address is 10.90.90.90.
3. Enter administrator's password when prompted. The password is **admin** by default.
4. To update switch's firmware or configuration file, select **Tools > Firmware Backup & Upgrade** from the banner.

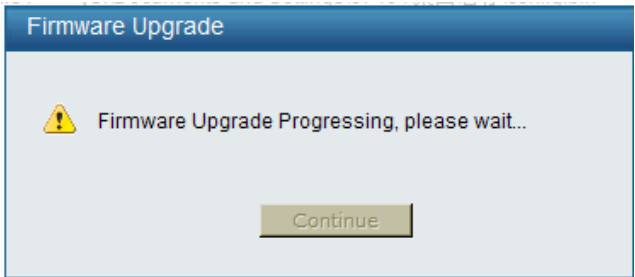


5. Click **Browse** to browse your inventories for a saved firmware file, and then click **Upgrade**

after selecting the firmware file you want to restore.

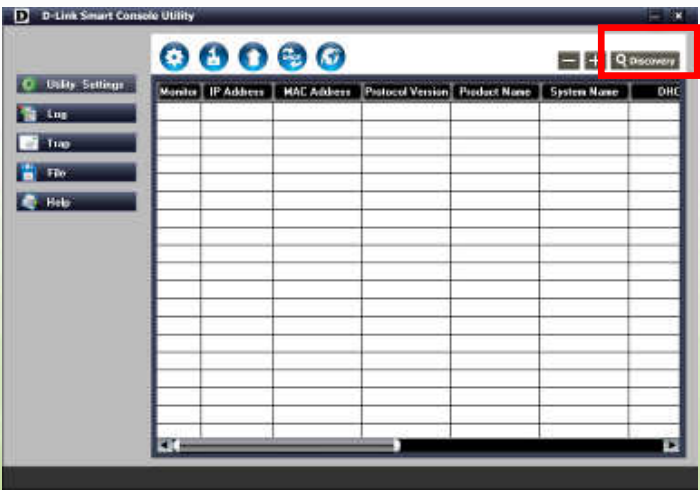


6. Wait until the “Firmware Upgrade Successful” message pops up and login again after device boots up.

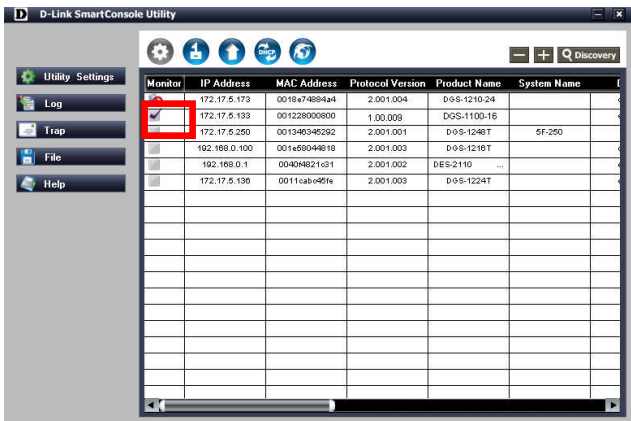


Upgrade using SmartConsole Utility

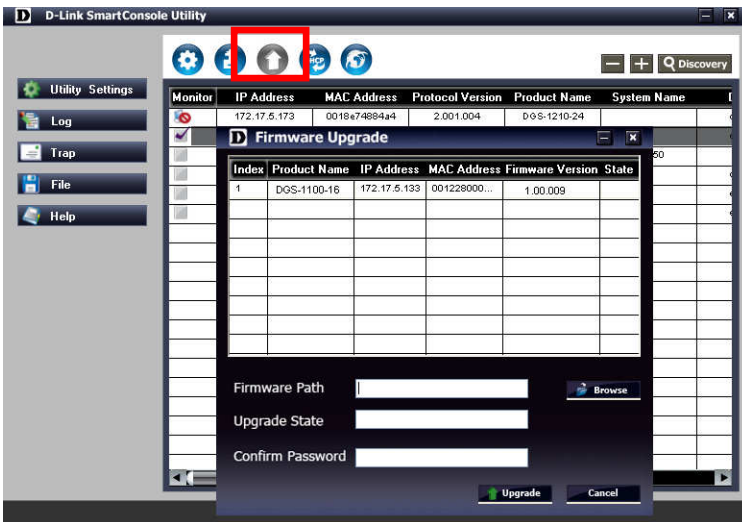
1. Connect a workstation installed with java SE runtime environment to any switch port of the device
2. Execute SmartConsole Utility and click the “Discovery” button to search switches.



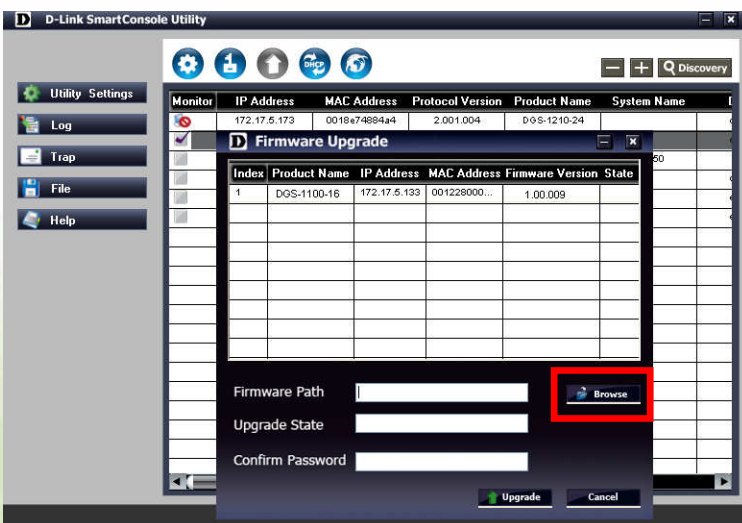
3. Single-click on the icon of Monitor column to select the target switch.

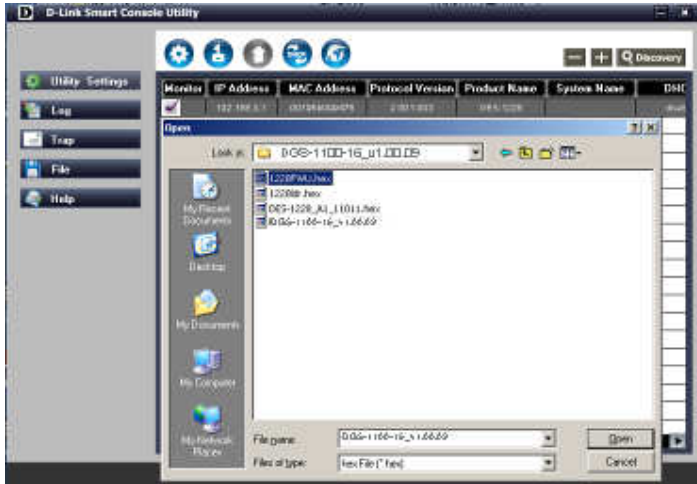


4. Click Firmware Upgrade button

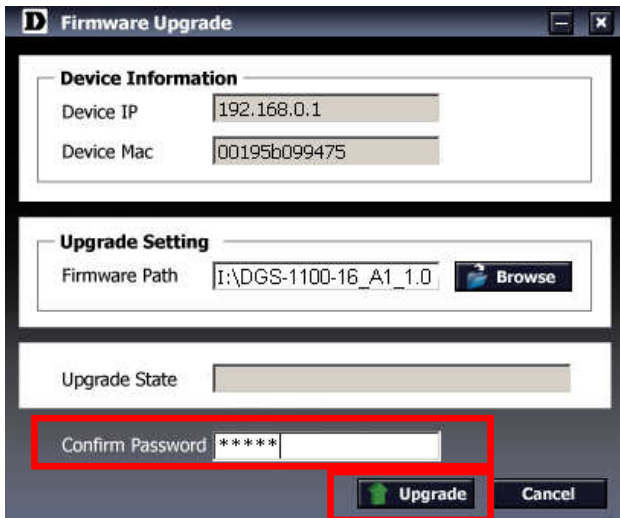


5. Click Browse button and select the firmware file (Model name_HW ver._FW ver. .hex) on your local hard drive.

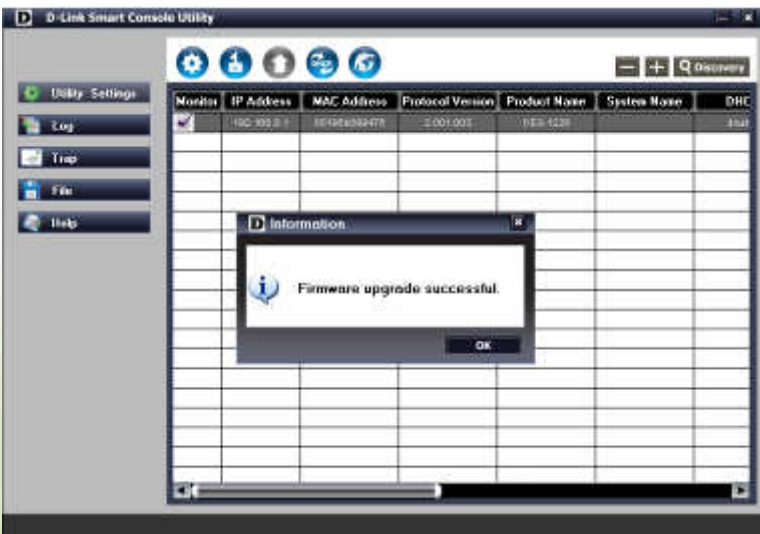




6. Enter password and click "Upgrade" button to start firmware upgrade. The default password is "admin".



7. Once the message popped up, click "OK" button to complete the firmware upgrade



New Features:

DGS-1100-05:

Firmware Version	New Features
V1.10.002	First Release

DGS-1100-08:

Firmware Version	New Features
V1.10.007	1. SmartConsole Utility v3.0
V1.10.002	First Release

DGS-1100-16/24:

Firmware Version	New Features
V1.10.008	1. SmartConsole Utility v3.0
V1.10.005	1. Management VLAN 2. Voice VLAN
V1.00.009	First Release

Problem Fixed:

DGS-1100-05:

Firmware Version	Problems Fixed
V1.10.002	First Release

DGS-1100-08:

Firmware Version	Problems Fixed
V1.10.002	First Release

DGS-1100-16/24:

Firmware Version	Problems Fixed
V1.10.005	NA
V1.00.012	Fix the configuration lost when FW upgrades from V1.00.009 to V1.10.005. Note: This Firmware will NOT cut in to production.
V1.00.009	First Release

Known Issues:

Firmware Version	Issues	Workaround
V1.10.005 (For DGS-1100-16/24)	When firmware V1.00.009 is upgraded to V1.10.005, the configuration will be lost.	Firmware V1.00.009 should be upgraded to V1.00.012 first, and then upgraded to V1.10.005.

		V1.00.012 can be downloaded from http://tsd.dlink.com.tw/
V1.10.002 (For DGS-1100-08)	NA	
V1.00.009 (For DGS-1100-16/24)	First Release	

Related Documentation:

- DGS-1100 Series User Manual
- DGS-1100 Series Getting Started Guide